



شركة الاستثمارات الوطنية  
NATIONAL INVESTMENTS COMPANY

**Bursa Kuwait – Daily Market Report**  
**MENA Securities – Research & Studies Dep.**

**Tuesday, September 15, 2020**

# DAILY MARKET COVERAGE REPORT

## NIC MENA SECURITIES - RESEARCH AND STUDIES DEP



Index	Close	DTD Chg Net	DTD (%)	YTD (%)	52W High	52W Low	MKT CAP Bn (KD)	PBV (X)	PE (X)	DY (%)
All Share Index	5,361.14	-0.97	-0.02%	-14.7%	6,416.43	4,339.58	31.07	1.24	15.00	3.92%
Premier Index	5,882.28	5.02	0.09%	-15.7%	7,172.32	4,498.65	22.97	1.66	13.81	3.64%
Main Index	4,332.35	-13.50	-0.31%	-11.9%	4,932.47	3,965.63	8.09	0.72	19.90	4.72%

Index	Value Mn(KD)	Volume (Mn share)
All Share Index	58.09	501.97
Premier Index	37.97	123.38
Main Index	20.12	378.59

Market Breadth	UP	Down	No Chg
All Share Index	46	68	59
Premier Index	14	6	0
Main Index	32	62	59

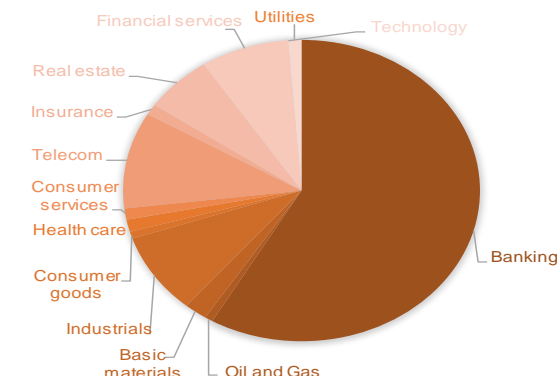
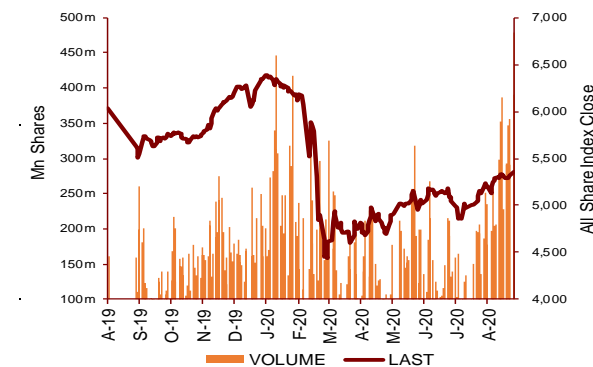
Today's Top 5 Gainer %	Close KD	Value KD	DTD (%)
Kuwait Real Estate Holding	0.026	5,601	8.33%
Kuwait Resorts	0.052	115,771	5.71%
UniCap Investment and Finance	0.043	25,897	4.94%
Kuwait National Cinema	0.698	10	4.18%
Aqar Real Estate Investments	0.062	1,250	3.67%

Today's Top 5 Loser %	Close KD	Value KD	DTD (%)
Investors Holding Group	0.015	2,816,402	-31.63%
Dar Al Thuraya Real Estate	0.114	1,358	-8.80%
Senery Holding	0.018	8,419	-7.69%
Gulf Petroleum Investment	0.020	585,884	-6.51%
Al Salam Group Holding	0.027	379,787	-6.25%

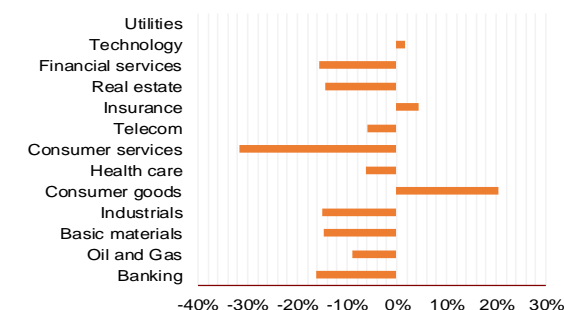
Today's Top 5 by Value	Close KD	DTD Chg	Trade Val Mn(KD)
Aayan Leasing and Investment	0.088	-2.34%	7.17
Kuwait Finance House	0.630	0.16%	5.39
Gulf Bank	0.217	1.40%	4.71
Ahli United Bank BSC	0.226	1.80%	4.59
Kuwait International Bank	0.186	2.20%	4.37

Top 5 by Volume	Close KD	DTD Chg	Trade Vol Mn(Shrs)
Investors Holding Group	0.015	-31.63%	143.92
Aayan Leasing and Investrn	0.088	-2.34%	78.59
Gulf Petroleum Investment	0.020	-6.51%	28.03
Kuwait International Bank	0.186	2.20%	23.41
Gulf Bank	0.217	1.40%	21.76

Sector	Close	DTD Chg Net	DTD (%)	YTD (%)	52W High	52W Low	MKT CAP Bn (KD)	PBV (X)	PE (X)	DY (%)
Banking	1,243.86	1.730	0.14%	-16.2%	1,536.8	986.4	18.13	1.65	15.11	3.5%
Oil and Gas	1,125.61	-8.000	-0.71%	-9.0%	1,372.2	985.7	0.23	0.82	26.35	5.4%
Basic materials	774.41	10.850	1.42%	-14.7%	1,013.8	561.7	0.65	0.94	14.24	7.8%
Industrials	789.71	-1.800	-0.23%	-14.8%	937.5	602.9	2.69	0.86	12.84	5.2%
Consumer goods	769.26	6.490	0.85%	20.4%	810.7	548.6	0.23	1.53	93.23	2.2%
Health care	829.21	0.000	0.00%	-6.3%	921.9	815.0	0.41	4.19	48.62	1.0%
Consumer services	733.80	3.580	0.49%	-31.7%	1,083.1	674.8	0.37	0.84	35.24	4.8%
Telecom	1,050.28	-7.940	-0.75%	-5.9%	1,116.7	802.2	3.22	1.51	11.05	5.7%
Insurance	996.95	-1.950	-0.20%	4.5%	1,005.5	901.0	0.36	0.75	8.46	5.9%
Real estate	911.00	1.840	0.20%	-14.3%	1,083.4	763.2	1.92	0.63	22.44	2.5%
Financial services	912.85	-6.490	-0.71%	-15.5%	1,097.0	801.4	2.49	0.71	16.12	4.2%
Technology	523.80	-7.280	-1.37%	1.7%	625.7	371.0	0.01	0.57	-69.84	5.6%
Utilities	886.84	7.890	0.90%	0.0%	1,042.1	781.6	0.37	4.84	30.14	0.0%
	5,361.14	-0.97	-0.02%	-14.7%	6,416.4	4,339.6	31.07	1.24	15.00	3.92%



YTD Sector Performance %



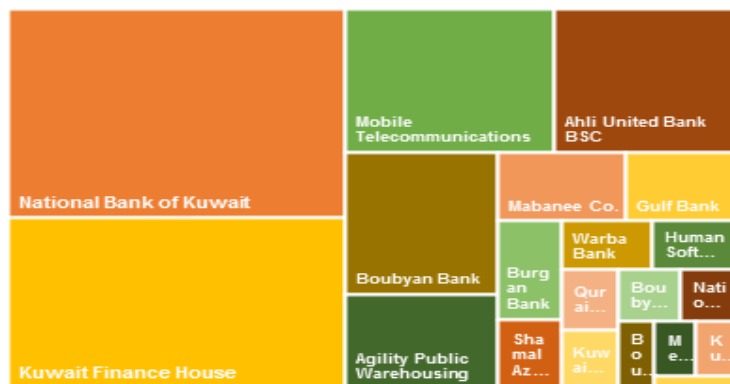
# DAILY MARKET COVERAGE REPORT

## NIC MENA SECURITIES - RESEARCH AND STUDIES DEP

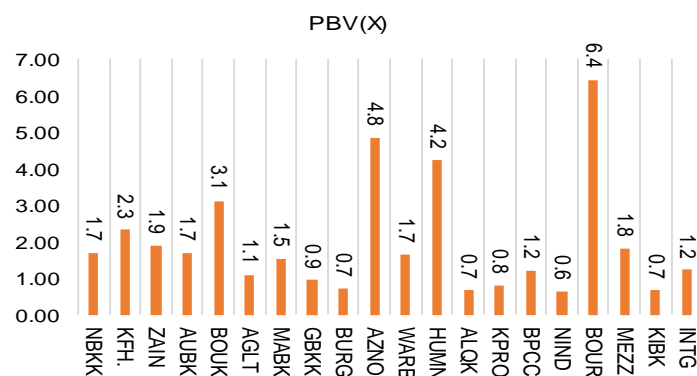


Premier Market	Price			Valuation Multiples			MKT Cap	Price Performance		Trading Indicators		ROE	ROA	52 Week (KD)	
	Close (KD)	Day Δ	Day % Δ	PBV(X)	PE(X)	DY%	Mn KD	MTD(%)	YTD (%)	Value (Mn KD)	(Mn Shrs)	(%)	(%)	High	Low
National Bank of Kuwait	0.861	-0.004	-0.46%	1.70	14.57	3.7%	5,847	0%	-15%	2.20	2.55	11.7%	1.4%	1.062	0.654
Kuwait Finance House	0.630	0.001	0.16%	2.32	19.05	2.6%	4,781	0%	-15%	5.39	8.57	12.2%	1.3%	0.761	0.473
Mobile Telecommunications	0.573	-0.004	-0.69%	1.91	11.43	5.4%	2,479	-3%	-4%	1.54	2.68	16.7%	4.6%	0.604	0.407
Ahli United Bank BSC	0.226	0.004	1.80%	1.70	9.95	5.4%	2,181	-4%	-24%	4.59	20.38	17.1%	1.8%	0.311	0.160
Boubyan Bank	0.590	-0.002	-0.34%	3.10	28.52	1.1%	1,786	2%	-3%	0.41	0.69	10.9%	1.2%	0.638	0.380
Agility Public Warehousing	0.625	-0.004	-0.64%	1.09	13.78	2.9%	1,196	0%	-12%	0.64	1.02	7.9%	4.2%	0.748	0.357
Mabane Co.	0.657	0.013	2.02%	1.53	12.87	1.6%	726	3%	-23%	0.93	1.42	11.9%	5.8%	0.877	0.434
Gulf Bank	0.217	0.003	1.40%	0.95	9.90	4.6%	630	2%	-28%	4.71	21.76	9.6%	1.0%	0.317	0.180
Burgan Bank	0.203	0.002	1.00%	0.71	6.28	5.6%	532	2%	-34%	0.31	1.55	11.3%	1.2%	0.332	0.175
Shamal Az-Zour Al-Oula Power & Water	0.337	0.003	0.90%	4.84	30.14	0.0%	371	5%	0%	3.27	9.74	16.1%	2.3%	0.500	0.297
Warba Bank	0.229	-0.009	-3.78%	1.65	21.81	0.0%	361	15%	-13%	3.98	16.80	7.6%	0.5%	0.279	0.164
Human Soft Holding	2.795	0.007	0.25%	4.23	9.48	6.6%	340	10%	-8%	1.19	0.43	44.6%	30.3%	3.470	1.944
Qurain Petrochemical Industries	0.278	0.003	1.09%	0.68	10.06	5.5%	284	-2%	-10%	0.35	1.27	6.7%	3.6%	0.340	0.163
Kuwait Projects Company Holding	0.152	0.001	0.66%	0.81	9.18	6.1%	275	2%	-30%	0.60	3.96	8.9%	0.3%	0.230	0.147
Boubyan Petrochemical	0.540	0.012	2.27%	1.22	23.04	9.6%	272	1%	-19%	0.58	1.07	5.3%	2.1%	0.800	0.395
National Industries Group Holding	0.169	0.001	0.60%	0.64	5.21	6.4%	241	8%	-30%	0.57	3.39	12.3%	3.7%	0.247	0.121
Boursa Kuwait Securities Co	1.030	-0.025	-2.37%	6.44	21.56	0.0%	207	0%	0%	1.93	1.85	29.9%	26.5%	1.210	0.996
Mezzan Holding	0.625	0.005	0.81%	1.80	33.77	2.7%	190	-4%	25%	0.25	0.40	5.3%	2.2%	0.665	0.428
Kuwait International Bank	0.186	0.004	2.20%	0.68	11.06	5.4%	190	9%	-28%	4.37	23.41	6.1%	0.6%	0.270	0.162
Integrated Holding	0.382	0.001	0.26%	1.23	10.64	10.5%	84	9%	-31%	0.17	0.44	11.5%	8.5%	0.600	0.342
<b>Total</b>		<b>5.02</b>	<b>0.09%</b>	<b>1.66</b>	<b>13.81</b>	<b>3.64%</b>	<b>22,975</b>	<b>0.4%</b>	<b>-15.7%</b>	<b>37.97</b>	<b>123.38</b>	<b>12.01%</b>	<b>1.56%</b>		

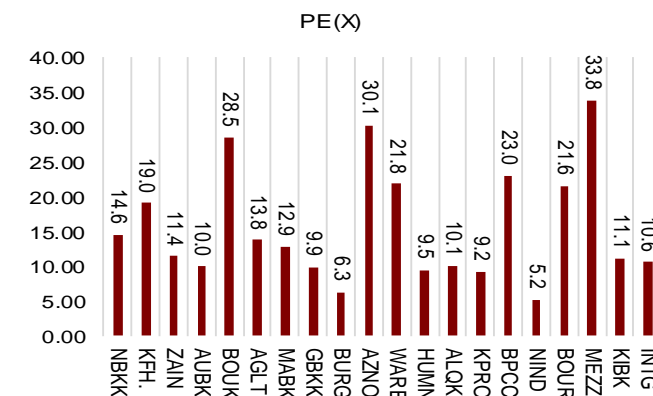
Market Capitalization



Price to Book Value

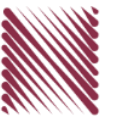


Price to Earning Value

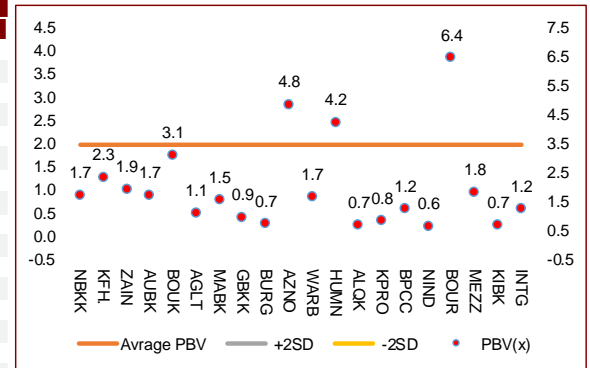


# DAILY MARKET COVERAGE REPORT

## NIC MENA SECURITIES - RESEARCH AND STUDIES DEP



Premier Market	Price			Valuation Multiples			MKT Cap	Price Performance		ROE	ROA
Company	Close (KD)	Day Δ	Day % Δ	PBV(X)	PE(X)	DY%	Mn KD	MTD(%)	YTD (%)	(%)	(%)
National Bank of Kuwait	0.861	-0.004	-0.46%	1.70	14.6	3.7%	5,847	0.3%	-15.3%	11.7%	1.4%
Kuwait Finance House	0.630	0.001	0.16%	2.32	19.0	2.6%	4,781	0.5%	-14.7%	12.2%	1.3%
Mobile Telecommunications	0.573	-0.004	-0.69%	1.91	11.4	5.4%	2,479	-2.7%	-4.3%	16.7%	4.6%
Ahli United Bank BSC	0.226	0.004	1.80%	1.70	10.0	5.4%	2,181	-3.9%	-23.7%	17.1%	1.8%
Boubyan Bank	0.590	-0.002	-0.34%	3.10	28.5	1.1%	1,786	2.2%	-3.2%	10.9%	1.2%
Agility Public Warehousing	0.625	-0.004	-0.64%	1.09	13.8	2.9%	1,196	0.3%	-12.0%	7.9%	4.2%
Mabane Co.	0.657	0.013	2.02%	1.53	12.9	1.6%	726	3.1%	-23.0%	11.9%	5.8%
Gulf Bank	0.217	0.003	1.40%	0.95	9.9	4.6%	630	1.9%	-28.4%	9.6%	1.0%
Burgan Bank	0.203	0.002	1.00%	0.71	6.3	5.6%	532	2.0%	-33.6%	11.3%	1.2%
Shamal Az-Zour Al-Oula Power & Water	0.337	0.003	0.90%	4.84	30.1	0.0%	371	5.3%	0.0%	16.1%	2.3%
Warba Bank	0.229	-0.009	-3.78%	1.65	21.8	0.0%	361	15.1%	-12.6%	7.6%	0.5%
Human Soft Holding	2.795	0.007	0.25%	4.23	9.5	6.6%	340	9.9%	-7.8%	44.6%	30.3%
Qurain Petrochemical Industries	0.278	0.003	1.09%	0.68	10.1	5.5%	284	-2.5%	-10.3%	6.7%	3.6%
Kuwait Projects Company Holding	0.152	0.001	0.66%	0.81	9.2	6.1%	275	2.0%	-29.6%	8.9%	0.3%
Boubyan Petrochemical	0.540	0.012	2.27%	1.22	23.0	9.6%	272	0.7%	-19.2%	5.3%	2.1%
National Industries Group Holding	0.169	0.001	0.60%	0.64	5.2	6.4%	241	8.3%	-29.9%	12.3%	3.7%
Boursa Kuwait Securities Co	1.030	-0.025	-2.37%	6.44	21.6	0.0%	207	0.0%	0.0%	29.9%	26.5%
Mezzan Holding	0.625	0.005	0.81%	1.80	33.8	2.7%	190	-4.2%	24.6%	5.3%	2.2%
Kuwait International Bank	0.186	0.004	2.20%	0.68	11.1	5.4%	190	8.7%	-28.3%	6.1%	0.6%
Integrated Holding	0.382	0.001	0.26%	1.23	10.6	10.5%	84	9.1%	-30.7%	11.5%	8.5%
<b>Total</b>		<b>5.02</b>	<b>0.09%</b>	<b>1.66</b>	<b>13.81</b>	<b>3.64%</b>	<b>22,975</b>	<b>0.4%</b>	<b>-15.7%</b>	<b>12.01%</b>	<b>1.56%</b>



Premier Market	Price			Moving Average		RSI	MKT Cap	Price Performance		52 Week (KD)	
Description	Close (KD)	Day Δ	Day % Δ	50 Day	200 Day	14 Day	Mn KD	MTD(%)	YTD (%)	High	Low
Premier Index	5,882	5.02	0.09%	5,641	5,901	63	22,975	0.4%	-15.7%	7,172	4,499

### Top 5 Performrs (Today's Price Change)

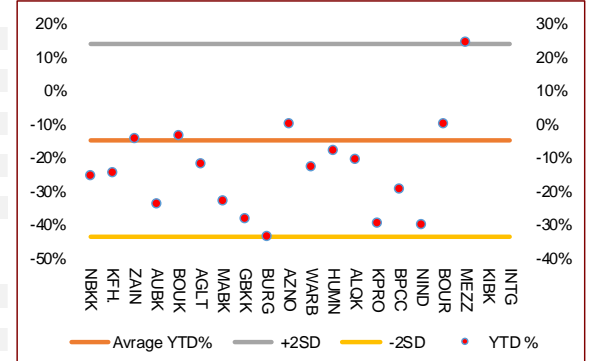
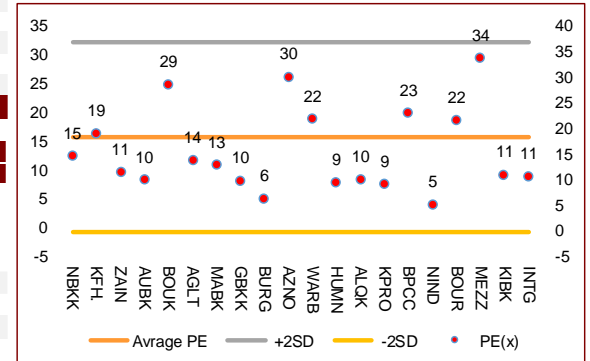
Boubyan Petrochemical	0.540	0.012	2.27%	0.567	0.584	42	272	0.7%	-19.2%	0.800	0.395
Kuwait International Bank	0.186	0.004	2.20%	0.172	0.208	79	190	8.7%	-28.3%	0.270	0.162
Mabane Co.	0.657	0.013	2.02%	0.635	0.686	51	726	3.1%	-23.0%	0.877	0.434
Ahli United Bank BSC	0.226	0.004	1.80%	0.204	0.228	50	2,181	-3.9%	-23.7%	0.311	0.160
Gulf Bank	0.217	0.003	1.40%	0.207	0.240	45	630	1.9%	-28.4%	0.317	0.180

### Middle Performrs (Today's Price Change)

Qurain Petrochemical Industries	0.278	0.003	1.09%	0.283	0.268	29	284	-2.5%	-10.3%	0.340	0.163
Burgan Bank	0.203	0.002	1.00%	0.192	0.235	62	532	2.0%	-33.6%	0.332	0.175
Shamal Az-Zour Al-Oula Power & Water	0.337	0.003	0.90%	0.138	0.035	61	371	5.3%	0.0%	0.500	0.297
Mezzan Holding	0.625	0.005	0.81%	0.608	0.553	35	190	-4.2%	24.6%	0.665	0.428
Kuwait Projects Company Holding	0.152	0.001	0.66%	0.152	0.181	47	275	2.0%	-29.6%	0.230	0.147
National Industries Group Holding	0.169	0.001	0.60%	0.160	0.188	72	241	8.3%	-29.9%	0.247	0.121
Integrated Holding	0.382	0.001	0.26%	0.380	0.454	68	84	9.1%	-30.7%	0.600	0.342
Human Soft Holding	2.795	0.007	0.25%	2.679	2.813	72	340	9.9%	-7.8%	3.470	1.944
Kuwait Finance House	0.630	0.001	0.16%	0.606	0.638	59	4,781	0.5%	-14.7%	0.761	0.473
Boubyan Bank	0.590	-0.002	-0.34%	0.100	0.100	79	1,786	2.2%	-3.2%	1.210	0.996

### Bottom 5 Performrs (Today's Price Change)

Warba Bank	0.229	-0.009	-3.78%	0.203	0.221	78	361	15.1%	-12.6%	0.279	0.164
Boursa Kuwait Securities Co	1.030	-0.025	-2.37%	0.021	0.005	50	207	0.0%	0.0%	1.210	0.996
Mobile Telecommunications	0.573	-0.004	-0.69%	0.565	0.548	32	2,479	-2.7%	-4.3%	0.604	0.407
Agility Public Warehousing	0.625	-0.004	-0.64%	0.636	0.613	58	1,196	0.3%	-12.0%	0.748	0.357
National Bank of Kuwait	0.861	-0.004	-0.46%	0.820	0.853	62	5,847	0.3%	-15.3%	1.062	0.654



# DAILY MARKET COVERAGE REPORT

NIC MENA SECURITIES - RESEARCH AND STUDIES DEP



Banking Sector	Price			Valuation Multiples			MKT Cap	Price Performance		Trading Indicators		ROE	ROA	52 Week (KD)	
	Company	Close (KD)	Day Δ	Day % Δ	PBV(X)	PE(X)		DY%	Mn KD	MTD(%)	YTD (%)			Value (Mn KD)	(Mn Shrs)
National Bank of Kuwait	0.861	-0.004	-0.46%	1.70	14.57	3.7%	5,847	0%	-15%	2.20	2.55	11.7%	1.4%	1.062	0.654
Kuwait Finance House	0.630	0.001	0.16%	2.32	19.05	2.6%	4,781	0%	-15%	5.39	8.57	12.2%	1.3%	0.761	0.473
Ahli United Bank BSC	0.226	0.004	1.80%	1.70	9.95	5.4%	2,181	-4%	-24%	4.59	20.38	17.1%	1.8%	0.311	0.160
Boubyan Bank	0.590	-0.002	-0.34%	3.10	28.52	1.1%	1,786	2%	-3%	0.41	0.69	10.9%	1.2%	0.638	0.380
Commercial Bank of Kuwait	0.500	0.000	0.00%	1.32	0.00	3.7%	965	0%	-5%	0.00	0.00	0.0%	0.0%	0.555	0.465
Gulf Bank	0.217	0.003	1.40%	0.95	9.90	4.6%	630	2%	-28%	4.71	21.76	9.6%	1.0%	0.317	0.180
Ahli United Bank	0.285	0.001	0.35%	1.22	10.10	4.8%	556	9%	-13%	0.09	0.33	12.1%	1.3%	0.330	0.225
Burgan Bank	0.203	0.002	1.00%	0.71	6.28	5.6%	532	2%	-34%	0.31	1.55	11.3%	1.2%	0.332	0.175
Warba Bank	0.229	-0.009	-3.78%	1.65	21.81	0.0%	361	15%	-13%	3.98	16.80	7.6%	0.5%	0.279	0.164
Al Ahli Bank of Kuwait	0.184	0.004	2.22%	0.53	10.30	7.6%	295	8%	-28%	0.36	1.95	5.1%	0.6%	0.310	0.156
Kuwait International Bank	0.186	0.004	2.20%	0.68	11.06	5.4%	190	9%	-28%	4.37	23.41	6.1%	0.6%	0.270	0.162
<b>Total Banking Sector - 11 Companies</b>				<b>1.65</b>	<b>15.11</b>	<b>3.5%</b>	<b>18,125</b>			<b>26.41</b>	<b>97.99</b>	<b>10.90%</b>	<b>1.21%</b>		

Basic materials	Price			Valuation Multiples			MKT Cap	Price Performance		Trading Indicators		ROE	ROA	52 Week (KD)	
	Company	Close (KD)	Day Δ	Day % Δ	PBV(X)	PE(X)		DY%	Mn KD	MTD(%)	YTD (%)			Value (Mn KD)	(Mn Shrs)
Qurain Petrochemical Industries	0.278	0.003	1.09%	0.68	10.06	5.5%	284	-2%	-10%	0.35	1.27	6.7%	3.6%	0.340	0.163
Boubyan Petrochemical	0.540	0.012	2.27%	1.22	23.04	9.6%	272	1%	-19%	0.58	1.07	5.3%	2.1%	0.800	0.395
Al Kout Industrial Projects	0.769	0.000	0.00%	2.50	16.21	6.5%	78	0%	-10%	0.00	0.00	15.4%	11.3%	0.850	0.769
Kuwait Foundry	0.238	0.000	0.00%	0.80	19.23	22.4%	17	0%	-29%	0.00	0.00	4.1%	3.8%	0.510	0.192
<b>Total Basic materials - 4 Companies</b>				<b>0.94</b>	<b>14.24</b>	<b>7.8%</b>	<b>651</b>			<b>0.93</b>	<b>2.33</b>	<b>6.57%</b>	<b>5.07%</b>		

Consumer goods	Price			Valuation Multiples			MKT Cap	Price Performance		Trading Indicators		ROE	ROA	52 Week (KD)	
	Company	Close (KD)	Day Δ	Day % Δ	PBV(X)	PE(X)		DY%	Mn KD	MTD(%)	YTD (%)			Value (Mn KD)	(Mn Shrs)
Mezzan Holding	0.625	0.005	0.81%	1.80	33.77	2.7%	190	-4%	25%	0.25	0.40	5.3%	2.2%	0.665	0.428
Livestock Transport and Trading	0.184	0.002	1.10%	0.96	32.80	0.1%	38	-1%	5%	0.02	0.10	2.9%	2.0%	0.200	0.152
Danah Al Safat Foodstuff	0.012	0.000	0.00%	0.25	(0.30)	0.1%	1	0%	-25%	0.00	0.00	-84.8%	-43.2%	0.029	0.010
<b>Total Basic materials - 3 Companies</b>				<b>1.53</b>	<b>93.23</b>	<b>2.2%</b>	<b>230</b>			<b>0.27</b>	<b>0.50</b>	<b>1.64%</b>	<b>0.90%</b>		

# DAILY MARKET COVERAGE REPORT

## NIC MENA SECURITIES - RESEARCH AND STUDIES DEP



Consumer services	Price			Valuation Multiples			MKT Cap	Price Performance		Trading Indicators		ROE	ROA	52 Week (KD)	
Company	Close (KD)	Day Δ	Day % Δ	PBV(X)	PE(X)	DY%	Mn KD	MTD(%)	YTD (%)	Value (Mn KD)	(Mn Shrs)	(%)	(%)	High	Low
Jazeera Airways	0.574	-0.008	-1.37%	2.85	7.68	6.1%	115	2%	-48%	0.27	0.46	37.1%	9.0%	1.110	0.372
Kuwait National Cinema	0.698	0.028	4.18%	0.80	7.55	6.9%	65	4%	-33%	0.00	0.00	10.6%	7.2%	1.050	0.600
Oula Fuel Marketing	0.110	-0.001	-0.90%	0.66	11.51	5.4%	45	-1%	-13%	0.02	0.20	5.7%	3.2%	0.134	0.095
Al Soor Fuel Marketing	0.110	0.001	0.92%	0.68	12.87	4.5%	45	-1%	-13%	0.01	0.12	5.3%	3.7%	0.129	0.096
Sultan Center Food Products	0.056	0.002	2.75%	0.70	14.09	0.0%	32	2%	8%	0.06	1.02	4.9%	0.7%	0.060	0.036
IFA Hotels and Resorts	0.023	-0.001	-2.13%	0.83	(0.63)	0.0%	14	-8%	-58%	0.00	0.01	-131.5%	-8.1%	0.062	0.021
Jiyad Holding	0.040	-0.001	-1.46%	0.36	8.06	0.0%	14	20%	1%	0.03	0.77	4.5%	2.8%	0.047	0.029
Kuwait Resorts	0.052	0.003	5.71%	0.35	9.41	0.0%	10	12%	-12%	0.12	2.25	3.8%	3.2%	0.060	0.038
Alrai Media Group	0.037	0.000	0.00%	0.83	(2.41)	0.0%	9	0%	-2%	0.00	0.00	-34.2%	-20.0%	0.045	0.031
Future Kid Entertainment and Real Estate	0.077	0.000	0.00%	0.44	28.90	15.1%	8	0%	-13%	0.00	0.00	1.5%	0.9%	0.110	0.069
Al Eid Food	0.074	-0.001	-0.68%	0.41	4.89	0.0%	7	11%	-7%	0.00	0.04	8.4%	6.1%	0.096	0.046
Kuwait Hotels	0.086	0.000	0.00%	1.21	(4.97)	0.0%	5	-2%	-14%	0.00	0.00	-24.4%	-13.2%	0.101	0.069
Palms Agro Production	0.060	-0.001	-0.83%	0.50	(41.94)	16.7%	3	5%	48%	0.00	0.01	-1.2%	-0.9%	0.062	0.025
Kuwait Cable Vision	0.014	0.000	0.00%	0.52	(11.65)	0.0%	1	0%	0%	0.00	0.00	-4.5%	-3.0%	0.026	0.012
<b>Total Consumer services - 14 Companies</b>				<b>0.84</b>	<b>35.24</b>	<b>4.8%</b>	<b>371</b>			<b>0.51</b>	<b>4.88</b>	<b>2.38%</b>	<b>2.72%</b>		

Financial services	Price			Valuation Multiples			MKT Cap	Price Performance		Trading Indicators		ROE	ROA	52 Week (KD)	
Company	Close (KD)	Day Δ	Day % Δ	PBV(X)	PE(X)	DY%	Mn KD	MTD(%)	YTD (%)	Value (Mn KD)	(Mn Shrs)	(%)	(%)	High	Low
Egypt Kuwait Holding	0.370	0.000	0.00%	2.19	12.49	5.3%	379	-1%	-18%	0.00	0.00	17.6%	7.1%	0.500	0.318
Kuwait Projects Company Holding	0.152	0.001	0.66%	0.81	9.18	6.1%	275	2%	-30%	0.60	3.96	8.9%	0.3%	0.230	0.147
National Industries Group Holding	0.169	0.001	0.60%	0.64	5.21	6.4%	241	8%	-30%	0.57	3.39	12.3%	3.7%	0.247	0.121
Boursa Kuwait Securities Co	1.030	-0.025	-2.37%	6.44	21.56	0.0%	207	0%	0%	1.93	1.85	29.9%	26.5%	1.210	0.996
GFH Financial Group	0.052	0.000	-0.57%	0.57	7.12	5.4%	177	3%	-24%	0.00	0.06	8.0%	1.3%	0.074	0.042
Tamdeen Investment	0.321	0.000	0.00%	0.39	13.31	3.7%	110	29%	-7%	0.00	0.00	3.0%	2.2%	0.400	0.199
National Investments	0.133	-0.003	-2.21%	0.59	9.89	6.1%	106	11%	-4%	0.66	4.97	5.9%	5.0%	0.158	0.080
Alimtiq Investment Group	0.093	-0.002	-2.01%	0.44	4.83	8.6%	95	9%	-26%	0.32	3.42	9.1%	5.2%	0.137	0.071
Commercial Facilities	0.185	0.000	0.00%	0.57	7.13	9.1%	94	1%	-15%	0.00	0.00	8.0%	4.2%	0.235	0.179
Aayan Leasing and Investment	0.088	-0.002	-2.34%	1.03	(4.80)	2.1%	70	50%	91%	7.17	78.59	-21.4%	-4.9%	0.102	0.032
Noor Financial Investment	0.175	-0.001	-0.57%	1.07	8.56	2.8%	69	8%	47%	0.09	0.54	12.5%	7.5%	0.184	0.076
Kuwait Investment	0.119	-0.001	-0.83%	0.52	3.73	8.5%	65	5%	-21%	0.11	0.95	13.9%	6.0%	0.172	0.095

# DAILY MARKET COVERAGE REPORT

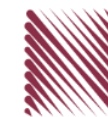
## NIC MENA SECURITIES - RESEARCH AND STUDIES DEP



Financial services	Price			Valuation Multiples			MKT Cap	Price Performance		Trading Indicators		ROE	ROA	52 Week (KD)		
	Company	Close (KD)	Day Δ	Day % Δ	PBV(X)	PE(X)	DY%	Mn KD	MTD(%)	YTD (%)	Value (Mn KD)	(Mn Shrs)	(%)	(%)	High	Low
Arzan Financial Group for Financing and Invest	0.054	-0.001	-0.91%	0.44	39.41	0.0%	43	-7%	129%	0.79	14.64	1.1%	0.7%	0.064	0.022	
Gulf Investment House	0.098	-0.001	-0.71%	1.10	180.90	0.0%	40	5%	52%	0.08	0.85	0.6%	0.5%	0.100	0.038	
Kuwait Financial Centre	0.081	0.001	1.63%	0.41	5.56	6.1%	39	0%	-24%	0.04	0.53	7.3%	3.5%	0.121	0.070	
Al Bareeq Holding	0.088	0.000	0.00%	0.92	17.48	0.0%	38	-17%	-12%	0.00	0.00	5.2%	5.0%	0.110	0.088	
Arabi Group Holdings	0.198	0.000	0.00%	1.07	(19.90)	0.0%	33	0%	-28%	0.00	0.00	-5.4%	-0.6%	0.337	0.079	
Kuwait and Middle East Financial Investment	0.115	-0.004	-3.36%	1.87	45.93	0.0%	30	0%	28%	0.01	0.12	4.1%	3.2%	0.138	0.063	
Umm Al Qaiwain General Investment Co	0.077	-0.004	-4.91%	0.52	14.55	4.7%	28	-13%	16%	0.00	0.00	3.6%	3.3%	0.096	0.052	
Asiya Capital Investments	0.034	0.000	-0.29%	0.36	17.47	0.2%	26	9%	-17%	0.02	0.64	2.1%	2.0%	0.041	0.029	
Privatization Holding	0.041	-0.002	-3.53%	0.30	(36.97)	0.0%	25	-2%	-17%	0.02	0.47	-0.8%	-0.5%	0.059	0.037	
Securities House	0.044	0.001	1.62%	0.60	(64.33)	0.0%	24	9%	-3%	0.14	3.21	-0.9%	-0.7%	0.050	0.027	
KAMCO Investment	0.071	-0.001	-1.93%	0.43	8.03	0.0%	24	2%	-21%	0.08	1.09	5.4%	2.3%	0.111	0.060	
Coast Investment and Development	0.035	0.000	-0.85%	0.37	34.88	0.0%	20	3%	-12%	0.00	0.08	1.1%	1.0%	0.045	0.026	
Inovest BSC Public	0.067	-0.003	-4.86%	0.46	8.93	8.9%	20	22%	8%	0.04	0.57	5.2%	2.9%	0.072	0.044	
First Investment	0.030	0.000	1.01%	0.47	(0.41)	0.0%	19	0%	-13%	0.04	1.35	-113.6%	-62.0%	0.045	0.022	
Al Madar Finance and Investment	0.092	-0.005	-5.46%	0.83	13.69	0.0%	19	8%	-1%	0.29	3.13	6.1%	5.0%	0.148	0.062	
Bayan Investment	0.045	-0.002	-4.89%	0.45	(23.10)	0.0%	16	-7%	17%	0.01	0.11	-1.9%	-0.8%	0.053	0.031	
Manazel Holding	0.034	0.000	0.60%	0.74	21.60	0.0%	14	2%	-14%	0.07	2.24	3.4%	0.8%	0.048	0.021	
Al Manar Financing and Leasing	0.047	-0.002	-4.90%	0.42	12.01	1.1%	14	0%	-10%	0.01	0.18	3.5%	2.7%	0.060	0.037	
Kuwait Finance and Investment	0.043	-0.002	-3.78%	0.34	19.44	0.0%	13	-4%	-13%	0.01	0.34	1.8%	1.2%	0.058	0.038	
National International Holding	0.063	0.001	1.61%	0.33	7.58	4.7%	13	0%	-17%	0.02	0.31	4.4%	3.3%	0.081	0.049	
Osoul Investment	0.082	0.000	-0.24%	0.62	6.89	0.0%	13	-2%	9%	0.01	0.07	9.0%	8.2%	0.121	0.070	
Amar Finance and Leasing	0.053	0.000	0.00%	0.59	44.37	0.0%	10	3%	39%	0.00	0.00	1.3%	1.2%	0.064	0.037	
UniCap Investment and Finance	0.043	0.002	4.94%	0.43	(21.27)	0.0%	10	17%	-21%	0.03	0.62	-2.0%	-1.0%	0.057	0.035	
Gulf North Africa Holding	0.056	0.000	0.00%	0.75	72.41	0.0%	8	1%	-9%	0.00	0.00	1.0%	0.6%	0.062	0.052	
International Financial Advisors	0.031	0.000	0.00%	0.93	(0.42)	2.1%	8	0%	-42%	0.00	0.00	-222.8%	-19.3%	0.060	0.027	
Al Salam Group Holding	0.027	-0.002	-6.25%	0.23	203.83	0.0%	7	19%	-6%	0.38	13.56	0.1%	0.1%	0.033	0.018	
Amwal International Investment	0.034	0.000	0.00%	0.64	12.68	0.0%	6	-5%	14%	0.00	0.00	5.0%	2.6%	0.055	0.030	
Al Madina for Finance and Investment	0.014	-0.001	-3.50%	0.46	(2.59)	0.0%	5	29%	-8%	0.03	2.07	-17.9%	-7.7%	0.019	0.009	
Ekttitab Holding	0.016	0.000	-1.25%	0.38	(11.12)	0.0%	5	23%	5%	0.02	1.06	-3.4%	-3.0%	0.017	0.010	
Credit Rating and Collection	0.030	-0.002	-4.84%	0.90	(19.85)	0.0%	5	-16%	48%	0.00	0.00	-4.6%	-4.3%	0.035	0.019	
Warba Capital Holding	0.047	0.000	0.00%	0.52	(7.48)	0.0%	5	-6%	-27%	0.00	0.00	-7.0%	-6.2%	0.099	0.045	
National Consumer Holding	0.051	0.000	0.00%	0.57	252.38	0.0%	5	-6%	-7%	0.00	0.00	0.2%	0.2%	0.100	0.010	
Kuwait Syrian Holding Co	0.025	0.000	-0.78%	0.22	(12.93)	0.0%	4	-3%	-18%	0.00	0.15	-1.7%	-1.1%	0.043	0.022	
Al Deera Holding	0.016	0.000	0.00%	0.70	(9.02)	0.0%	3	0%	-20%	0.00	0.00	-7.7%	-1.7%	0.022	0.011	
Al Mal Investment Company	0.009	0.000	-3.16%	0.41	(0.86)	0.0%	3	2%	-7%	0.04	3.89	-47.6%	-23.3%	0.016	0.008	
Gulf Franchising Holding	0.050	0.000	0.00%	0.79	(2.18)	0.0%	2	-14%	-33%	0.00	0.00	-36.2%	-10.8%	0.160	0.001	
Tamkeen Holding	0.005	0.000	0.00%	0.05	(7.18)	0.0%	0	0%	0%	0.00	0.00	-0.7%	-0.7%	0.005	0.005	
<b>Total Financial services - 49 Companies</b>				<b>0.71</b>	<b>16.12</b>	<b>4.2%</b>	<b>2,490</b>				<b>13.64</b>	<b>149.05</b>	<b>4.42%</b>	<b>4.14%</b>		

# DAILY MARKET COVERAGE REPORT

## NIC MENA SECURITIES - RESEARCH AND STUDIES DEP



Health care	Price			Valuation Multiples			MKT Cap	Price Performance		Trading Indicators		ROE	ROA	52 Week (KD)	
Company	Close (KD)	Day Δ	Day % Δ	PBV(X)	PE(X)	DY%	Mn KD	MTD(%)	YTD (%)	Value (Mn KD)	(Mn Shrs)	(%)	(%)	High	Low
Al-Maidan Clinic for Oral Health Services	1.220	0.000	0.00%	7.90	47.78	0.6%	305	0%	0%	0.00	0.00	16.5%	10.9%	1.240	1.220
Advanced Technology	0.627	0.000	0.00%	1.63	51.04	2.4%	94	0%	-23%	0.00	0.00	3.2%	0.7%	0.900	0.580
Yiaco Medical	0.707	0.000	0.00%	6.06	52.72	0.0%	12	0%	0%	0.00	0.00	11.5%	0.6%	0.707	0.707
<b>Total Health care - 3 Companies</b>				<b>4.19</b>	<b>48.62</b>	<b>1.0%</b>	<b>411</b>			<b>0.00</b>	<b>0.00</b>	<b>8.61%</b>	<b>4.68%</b>		

Industrials	Price			Valuation Multiples			MKT Cap	Price Performance		Trading Indicators		ROE	ROA	52 Week (KD)	
Company	Close (KD)	Day Δ	Day % Δ	PBV(X)	PE(X)	DY%	Mn KD	MTD(%)	YTD (%)	Value (Mn KD)	(Mn Shrs)	(%)	(%)	High	Low
Agility Public Warehousing	0.625	-0.004	-0.64%	1.09	13.78	2.9%	1,196	0%	-12%	0.64	1.02	7.9%	4.2%	0.748	0.357
Human Soft Holding	2.795	0.007	0.25%	4.23	9.48	6.6%	340	10%	-8%	1.19	0.43	44.6%	30.3%	3.470	1.944
ALAFCO Aviation Lease and Finance	0.160	0.000	0.00%	0.48	8.61	6.3%	152	2%	-41%	0.76	4.69	5.5%	1.4%	0.278	0.138
Kuwait Cement	0.198	0.006	3.13%	0.67	35.14	7.5%	141	14%	-20%	0.53	2.71	1.9%	1.3%	0.271	0.144
Gulf Cable and Electrical Industries	0.667	-0.042	-5.92%	0.80	33.08	4.1%	140	4%	37%	1.05	1.55	2.4%	2.2%	0.742	0.390
Integrated Holding	0.382	0.001	0.26%	1.23	10.64	10.5%	84	9%	-31%	0.17	0.44	11.5%	8.5%	0.600	0.342
Kuwait Portland Cement	0.779	0.015	1.96%	1.05	10.29	12.6%	78	7%	-21%	0.00	0.00	10.2%	8.2%	1.208	0.683
United Projects for Aviation Services	0.465	0.000	0.00%	0.98	7.96	4.5%	74	0%	-9%	0.00	0.00	12.3%	7.8%	0.512	0.367
Educational Holding Group	0.300	0.000	0.00%	1.74	9.50	5.0%	74	0%	-32%	0.01	0.02	18.3%	16.7%	0.475	0.228
Heavy Engineering Industries and Shipbuilding	0.370	-0.003	-0.80%	1.07	5.94	7.9%	67	1%	-9%	0.19	0.52	18.0%	5.9%	0.419	0.298
National Industries	0.154	0.004	2.67%	0.64	12.55	6.4%	54	-6%	-7%	0.02	0.11	5.1%	3.8%	0.173	0.143
ACICO Industries	0.108	0.002	1.89%	0.35	14.06	4.6%	36	15%	-19%	0.00	0.04	2.5%	0.6%	0.144	0.081
Kuwait Company for Process Plant Constructi	0.314	0.000	0.00%	1.24	6.73	5.7%	33	-1%	28%	0.03	0.11	18.5%	7.7%	0.337	0.175
Ras Al Khaimah for White Cement and Constr	0.065	0.000	0.00%	0.51	19.94	8.4%	33	0%	0%	0.00	0.00	2.6%	2.0%	0.080	0.055
Gulf Cement	0.033	0.001	3.42%	0.33	(12.15)	12.5%	27	11%	-39%	0.01	0.29	-2.7%	-2.2%	0.062	0.029
Combined Group Contracting	0.158	0.001	0.64%	0.55	7.12	13.0%	26	2%	-36%	0.23	1.47	7.7%	1.2%	0.251	0.138
Sharjah Cement and Industrial Development	0.042	0.000	0.00%	0.21	25.32	12.4%	26	0%	0%	0.00	0.00	0.8%	0.6%	0.064	0.042
KGL Logistics	0.027	0.000	0.00%	0.20	4.45	0.1%	21	10%	-27%	0.00	0.00	4.6%	2.9%	0.043	0.023
Shuaiba Industrial	0.130	0.000	0.00%	0.72	40.15	7.6%	13	5%	-16%	0.00	0.00	1.8%	1.4%	0.180	0.122
Kuwait and Gulf Link Transport	0.046	0.001	2.48%	0.19	13.76	0.0%	13	2%	-31%	0.01	0.24	1.4%	0.4%	0.078	0.042
National Cleaning	0.056	0.002	3.15%	0.33	7.46	9.1%	12	3%	-22%	0.00	0.01	4.4%	1.5%	0.088	0.047
Fujairah Cement Industries	0.033	0.000	0.00%	0.14	16.15	12.6%	12	6%	-26%	0.00	0.00	0.8%	0.4%	0.052	0.029
Mubarrad Holding	0.063	-0.001	-0.78%	0.50	10.20	7.4%	10	12%	-29%	0.11	1.77	4.9%	4.1%	0.089	0.049
Hilal Cement	0.100	0.000	0.00%	0.87	(8.18)	15.1%	10	-13%	0%	0.00	0.00	-10.6%	-6.2%	0.126	0.063
Specialities Group Holding	0.063	0.002	2.93%	0.34	7.52	0.0%	10	6%	-17%	0.03	0.44	4.5%	3.5%	0.078	0.050
National Ranges	0.015	0.000	0.65%	0.28	(1.13)	0.0%	4	-6%	50%	0.03	1.87	-24.9%	-5.3%	0.018	0.007
Metal and Recycling	0.041	0.000	0.00%	0.34	(1.73)	0.0%	4	-6%	-18%	0.00	0.00	-19.7%	-10.1%	0.070	0.020
Salbookh Trading	0.036	0.000	-0.28%	0.48	(2.08)	0.0%	4	30%	-29%	0.01	0.23	-23.2%	-15.9%	0.051	0.026
Equipment Holding	0.017	-0.001	-4.49%	0.34	(196.31)	0.0%	2	15%	-22%	0.01	0.49	-0.2%	-0.1%	0.024	0.013
<b>Total Industrials - 29 Companies</b>				<b>0.86</b>	<b>12.84</b>	<b>5.2%</b>	<b>2,695</b>			<b>5.02</b>	<b>18.46</b>	<b>6.67%</b>	<b>5.05%</b>		



# DAILY MARKET COVERAGE REPORT

## NIC MENA SECURITIES - RESEARCH AND STUDIES DEP



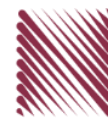
<b>Insurance</b>	Price			Valuation Multiples			MKT Cap	Price Performance		Trading Indicators		ROE	ROA	52 Week (KD)	
Company	Close (KD)	Day Δ	Day % Δ	PBV(X)	PE(X)	DY%	Mn KD	MTD(%)	YTD (%)	Value (Mn KD)	(Mn Shrs)	(%)	(%)	High	Low
Gulf Insurance Group	0.602	0.000	0.00%	1.03	8.40	6.2%	112	-2%	-9%	0.00	0.00	12.3%	1.7%	0.680	0.550
Al Ahleia Insurance	0.410	0.000	0.00%	0.77	8.26	8.2%	85	7%	1%	0.00	0.00	9.4%	3.3%	0.424	0.367
Kuwait Insurance	0.370	0.000	0.00%	0.61	7.17	6.4%	68	6%	12%	0.00	0.00	8.5%	4.6%	0.387	0.300
Kuwait Reinsurance	0.211	0.000	0.00%	0.80	9.03	2.1%	43	8%	53%	0.00	0.00	8.9%	3.2%	0.211	0.126
Bahrain Kuwait Insurance	0.200	0.000	0.00%	0.93	12.87	6.1%	28	0%	0%	0.00	0.00	7.2%	1.1%	0.200	0.200
Warba Insurance	0.075	-0.004	-4.58%	0.33	10.65	0.0%	12	-5%	24%	0.00	0.03	3.1%	1.0%	0.094	0.051
First Takaful Insurance	0.040	0.000	0.00%	0.48	5.04	0.0%	4	0%	4%	0.00	0.00	9.6%	5.9%	0.056	0.031
Wethaq Takaful Insurance	0.023	-0.001	-3.43%	0.21	(28.47)	0.0%	2	-2%	-6%	0.01	0.40	-0.7%	-0.7%	0.035	0.018
<b>Total Insurance - 8 Companies</b>				<b>0.75</b>	<b>8.46</b>	<b>5.9%</b>	<b>355</b>			<b>0.01</b>	<b>0.43</b>	<b>8.86%</b>	<b>3.00%</b>		

<b>Oil and Gas</b>	Price			Valuation Multiples			MKT Cap	Price Performance		Trading Indicators		ROE	ROA	52 Week (KD)	
Company	Close (KD)	Day Δ	Day % Δ	PBV(X)	PE(X)	DY%	Mn KD	MTD(%)	YTD (%)	Value (Mn KD)	(Mn Shrs)	(%)	(%)	High	Low
National Petroleum Services	1.060	0.000	0.00%	2.52	9.04	6.6%	103	6%	-9%	0.00	0.00	27.9%	23.6%	1.389	0.903
Independent Petroleum Group	0.430	0.000	0.00%	0.79	11.72	7.0%	78	-4%	-11%	0.00	0.00	6.8%	2.2%	0.497	0.375
Burgan for Well Drilling Trading and Maintenanc	0.078	0.000	0.00%	0.28	7.92	0.0%	18	14%	-3%	0.00	0.00	3.6%	1.1%	0.098	0.060
Energy House Holding	0.021	-0.001	-4.11%	0.65	(2.88)	0.0%	16	6%	-8%	0.01	0.24	-22.5%	-17.0%	0.036	0.014
Gulf Petroleum Investment	0.020	-0.001	-6.51%	0.22	(6.48)	0.0%	9	5%	0%	0.59	28.03	-3.4%	-2.3%	0.024	0.012
Senergy Holding	0.018	-0.002	-7.69%	0.36	(0.75)	0.0%	4	15%	-15%	0.01	0.44	-47.9%	-30.4%	0.027	0.014
<b>Total Oil and Gas - 6 Companies</b>				<b>0.82</b>	<b>26.35</b>	<b>5.4%</b>	<b>227</b>			<b>0.60</b>	<b>28.71</b>	<b>3.10%</b>	<b>2.18%</b>		

<b>Real estate</b>	Price			Valuation Multiples			MKT Cap	Price Performance		Trading Indicators		ROE	ROA	52 Week (KD)	
Company	Close (KD)	Day Δ	Day % Δ	PBV(X)	PE(X)	DY%	Mn KD	MTD(%)	YTD (%)	Value (Mn KD)	(Mn Shrs)	(%)	(%)	High	Low
Mabane Co.	0.657	0.013	2.02%	1.53	12.87	1.6%	726	3%	-23%	0.93	1.42	11.9%	5.8%	0.877	0.434
Commercial Real Estate	0.108	-0.001	-0.92%	0.66	13.38	5.3%	195	10%	12%	0.35	3.29	5.0%	2.7%	0.109	0.083
Salhia Real Estate	0.393	-0.004	-1.01%	1.19	9.03	5.1%	194	0%	-5%	0.13	0.34	13.2%	5.8%	0.460	0.324
National Real Estate	0.073	0.000	0.00%	0.40	9.61	0.0%	110	4%	-16%	0.08	1.12	4.2%	2.4%	0.090	0.058
Tamdeen Real Estate	0.248	0.000	0.00%	0.36	12.10	4.1%	100	-1%	-23%	0.00	0.00	3.0%	2.2%	0.343	0.241
Kuwait Real Estate	0.101	0.002	2.02%	0.71	12.83	0.4%	90	8%	-4%	0.79	7.92	5.5%	2.2%	0.115	0.070
United Real Estate	0.050	-0.003	-4.98%	0.29	(7.38)	0.0%	53	-1%	-19%	0.00	0.00	-3.9%	-1.2%	0.063	0.045
First Dubai for Real Estate Development	0.040	0.000	-0.49%	0.54	44.19	1.0%	40	5%	12%	0.10	2.37	1.2%	1.0%	0.055	0.027
Al Mazaya Holding	0.055	0.000	0.55%	0.43	(3.91)	0.1%	34	7%	-8%	0.05	0.99	-11.0%	-3.8%	0.067	0.047
Ajial Real Estate Entertainment	0.139	0.000	0.00%	0.22	13.43	0.0%	27	5%	-19%	0.00	0.02	1.6%	1.4%	0.213	0.115
Injazzat Real Estate Development	0.077	-0.001	-0.65%	0.49	(3.67)	9.0%	26	3%	-4%	0.00	0.01	-13.4%	-7.0%	0.091	0.061

# DAILY MARKET COVERAGE REPORT

## NIC MENA SECURITIES - RESEARCH AND STUDIES DEP



Real estate Company	Price			Valuation Multiples			MKT Cap Mn KD	Price Performance		Trading Indicators		ROE (%)	ROA (%)	52 Week (KD)	
	Close (KD)	Day Δ	Day % Δ	PBV(X)	PE(X)	DY%		MTD(%)	YTD (%)	Value (Mn KD)	(Mn Shrs)			High	Low
Aayan Real Estate	0.059	-0.001	-1.17%	0.35	11.60	8.1%	25	17%	-18%	0.02	0.35	3.0%	1.9%	0.080	0.048
Ream Real Estate	0.204	0.000	0.00%	1.56	(8.21)	1.1%	22	0%	132%	0.00	0.00	-19.0%	-10.1%	0.204	0.060
Arkan Al Kuwait Real Estate	0.086	0.000	0.00%	0.61	9.26	9.1%	21	2%	-4%	0.00	0.00	6.6%	3.5%	0.100	0.076
Al Argan International Real Estate	0.083	0.000	0.00%	0.24	26.93	5.9%	21	-5%	-21%	0.00	0.00	0.9%	0.3%	0.141	0.060
Al-Enmaa Real Estate	0.046	0.000	0.87%	0.47	12.26	0.0%	21	7%	-26%	0.20	4.34	3.8%	2.4%	0.079	0.037
Munshaat Real Estate Projects	0.065	0.000	-0.62%	0.44	23.81	3.3%	21	29%	-13%	0.02	0.30	1.8%	0.7%	0.085	0.045
Dalqan Real Estate	0.350	0.000	0.00%	2.91	59.01	0.0%	19	0%	0%	0.00	0.00	4.9%	4.9%	0.350	0.350
Dar Al Thuraya Real Estate	0.114	-0.011	-8.80%	1.08	30.05	0.0%	17	-10%	64%	0.00	0.01	3.6%	3.6%	0.190	0.040
Kuwait Business Town Real Estate	0.026	0.000	-1.15%	0.24	6.56	0.3%	16	8%	-42%	0.03	1.11	3.6%	2.7%	0.046	0.022
Sokouk Holding	0.026	0.000	-0.75%	0.32	(4.39)	0.0%	15	13%	-25%	0.07	2.74	-7.4%	-4.7%	0.040	0.022
Tijara and Realestate Investment	0.041	0.001	2.27%	0.38	10.65	4.9%	15	-4%	-19%	0.00	0.00	3.6%	1.9%	0.055	0.034
Aqar Real Estate Investments	0.062	0.002	3.67%	0.45	5.19	8.0%	13	-4%	-22%	0.00	0.02	8.7%	7.3%	0.089	0.058
Al-Arabiya Real Estate	0.026	0.000	0.00%	0.23	7.88	2.4%	13	13%	-12%	0.02	0.68	2.9%	1.1%	0.033	0.020
Mashaer Holding	0.061	0.001	0.99%	0.47	6.56	0.0%	11	12%	-21%	0.00	0.07	7.1%	5.0%	0.086	0.048
Osos Holding Group	0.092	-0.003	-3.06%	0.73	6.94	10.3%	10	-3%	-8%	0.00	0.01	10.5%	7.0%	0.118	0.084
Investors Holding Group	0.015	-0.007	-31.63%	0.74	(0.70)	0.0%	9	12%	88%	2.82	143.92	-106.5%	-57.2%	0.032	0.007
Al Massaleh Real Estate	0.036	0.001	2.86%	0.40	(5.02)	0.0%	8	24%	-3%	0.00	0.01	-8.1%	-1.9%	0.040	0.026
Abyaar Real Estate Development	0.008	0.000	0.00%	0.22	(0.53)	0.0%	8	1%	-5%	0.02	2.55	-40.9%	-12.4%	0.014	0.005
Kuwait Remal Real Estate	0.020	0.000	1.52%	0.30	(2.75)	0.0%	6	38%	-18%	0.00	0.24	-11.0%	-3.9%	0.027	0.013
Kuwait Real Estate Holding	0.026	0.002	8.33%	0.04	0.69	6.8%	5	2%	-9%	0.01	0.22	5.5%	2.2%	0.034	0.022
Taameer Real Estate Investment	0.020	-0.001	-2.93%	0.30	(4.21)	0.0%	5	6%	-25%	0.05	2.26	-7.0%	-4.5%	0.034	0.013
Mena Real Estate	0.028	-0.001	-1.75%	0.19	(62.40)	0.0%	4	14%	-32%	0.02	0.64	-0.3%	-0.2%	0.043	0.021
Real Estate Trade Centers	0.029	0.000	0.00%	0.16	167.41	0.0%	4	16%	26%	0.00	0.01	0.1%	0.1%	0.050	0.018
Sanam Real Estate	0.029	-0.002	-5.00%	0.36	38.60	0.0%	3	-5%	-29%	0.00	0.05	0.9%	0.9%	0.043	0.027
Al Masaken International Real Estate Developm	0.027	-0.001	-1.85%	0.29	32.01	0.6%	3	-16%	-40%	0.00	0.05	0.9%	0.4%	0.074	0.027
Ajwan Gulf Real Estate	0.011	0.000	0.00%	0.19	(7.68)	0.0%	2	0%	-29%	0.00	0.00	-2.5%	-2.2%	0.016	0.009
Effect Real Estate	0.021	0.000	0.00%	0.29	(8.85)	4.9%	2	0%	0%	0.00	0.00	-3.3%	-3.2%	0.021	0.021
Al Mudon International Real Estate	0.016	0.000	0.00%	0.12	(8.22)	0.0%	2	0%	-35%	0.00	0.00	-1.5%	-1.4%	0.029	0.015
<b>Total Real estate - 39 Companies</b>				<b>0.63</b>	<b>22.44</b>	<b>2.5%</b>	<b>1,917</b>			<b>5.72</b>	<b>177.05</b>	<b>2.79%</b>	<b>2.96%</b>		

# DAILY MARKET COVERAGE REPORT

NIC MENA SECURITIES - RESEARCH AND STUDIES DEP



Technology	Price			Valuation Multiples			MKT Cap	Price Performance		Trading Indicators		ROE	ROA	52 Week (KD)	
	Company	Close (KD)	Day Δ	Day % Δ	PBV(X)	PE(X)		DY%	Mn KD	MTD(%)	YTD (%)			Value (Mn KD)	(Mn Shrs)
Automated Systems	0.072	-0.001	-1.37%	0.57	(69.84)	5.6%	7	5%	2%	0.01	0.10	-0.8%	-0.7%	0.086	0.051
<b>Total Technology - 1 Companies</b>				<b>0.57</b>	<b>(69.84)</b>	<b>5.6%</b>	<b>7</b>			<b>0.01</b>	<b>0.10</b>	<b>-0.81%</b>	<b>-0.73%</b>		

Telecom	Price			Valuation Multiples			MKT Cap	Price Performance		Trading Indicators		ROE	ROA	52 Week (KD)	
	Company	Close (KD)	Day Δ	Day % Δ	PBV(X)	PE(X)		DY%	Mn KD	MTD(%)	YTD (%)			Value (Mn KD)	(Mn Shrs)
Mobile Telecommunications	0.573	-0.004	-0.69%	1.91	11.43	5.4%	2,479	-3%	-4%	1.54	2.68	16.7%	4.6%	0.604	0.407
Kuwait Telecommunications	0.844	-0.011	-1.29%	1.96	9.67	4.1%	421	0%	7%	0.02	0.02	20.2%	11.1%	0.870	0.680
National Mobile Telecommunications	0.600	-0.002	-0.33%	0.53	9.98	10.8%	301	4%	-28%	0.02	0.04	5.3%	2.4%	0.835	0.550
AAN Digital Services	0.013	-0.001	-4.58%	0.37	40.77	0.0%	11	20%	-7%	0.13	9.99	0.9%	0.7%	0.021	0.009
Hayat Communications	0.065	0.000	0.00%	0.55	27.54	0.0%	6	-21%	-13%	0.00	0.00	2.0%	0.8%	0.098	0.030
<b>Telecom - 5 Companies</b>				<b>1.51</b>	<b>11.05</b>	<b>5.7%</b>	<b>3,218</b>			<b>1.70</b>	<b>12.73</b>	<b>13.70%</b>	<b>7.86%</b>		

Utilities	Price			Valuation Multiples			MKT Cap	Price Performance		Trading Indicators		ROE	ROA	52 Week (KD)	
	Company	Close (KD)	Day Δ	Day % Δ	PBV(X)	PE(X)		DY%	Mn KD	MTD(%)	YTD (%)			Value (Mn KD)	(Mn Shrs)
Shamal Az-Zour Al-Oula Power & Water	0.337	0.003	0.90%	4.84	30.14	0.0%	371	5%	0%	3.27	9.74	16.1%	2.3%	0.500	0.297
<b>Total Utilities - 1 Companies</b>				<b>4.84</b>	<b>30.14</b>	<b>0.0%</b>	<b>371</b>			<b>3.27</b>	<b>9.74</b>	<b>16.06%</b>	<b>2.26%</b>		

<b>Total Market 173 Companies</b>				<b>1.24</b>	<b>15.00</b>	<b>3.92%</b>	<b>31,068</b>			<b>58.09</b>	<b>501.97</b>	<b>8.26%</b>	<b>2.76%</b>		
-----------------------------------	--	--	--	-------------	--------------	--------------	---------------	--	--	--------------	---------------	--------------	--------------	--	--

## End of Report

The information contained in this document is proprietary to NIC and is for use only by the persons to whom it is issued. This document is confidential and may not be distributed either in part or in whole without the express agreement of NIC. It is intended solely for the use of the individual or entity to whom it is addressed and others authorized to receive it.



شركة الاستثمار الوطنية  
NATIONAL INVESTMENTS COMPANY

Sharq, Al Mutanabi Street, Khaleejia Tower | P.O. Box 25667, Safat 13117, Kuwait

T.: +965 2226 6666 | Fax: +965 2226 6793 | [www.nic.com.kw](http://www.nic.com.kw)