

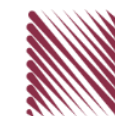
شركة الاستثمارات الوطنية
NATIONAL INVESTMENTS COMPANY

Boursa Kuwait – Daily Market Report
MENA Securities – Research & Studies Dep.

Monday, September 28, 2020

DAILY MARKET COVERAGE REPORT

NIC MENA SECURITIES - RESEARCH AND STUDIES DEP



Index	Close	DTD Chg Net	DTD (%)	YTD (%)	52W High	52W Low	MKT CAP Bn (KD)	PBV (X)	PE (X)	DY (%)
All Share Index	5,566.72	-17.70	-0.32%	-11.4%	6,416.43	4,339.58	32.26	1.29	15.58	3.77%
Premier Index	6,155.89	-27.53	-0.45%	-11.8%	7,172.32	4,498.65	24.04	1.73	14.45	3.48%
Main Index	4,398.13	2.64	0.06%	-10.6%	4,932.47	3,965.63	8.22	0.73	20.20	4.65%
NIC 50 Index	6,825.20	-26.26	-0.38%	-8.5%	7,517.86	5,014.61	27.22	1.47	14.79	3.71%

Index	Value Mn(KD)	Volume (Mn share)
All Share Index	38.93	321.95
Premier Index	26.54	61.71
Main Index	12.40	260.25
NIC 50 Index	35.25	259.13

Market Breadth	UP	Down	No Chg
All Share Index	50	60	63
Premier Index	5	11	4
Main Index	45	49	59
NIC 50 Index	17	25	8

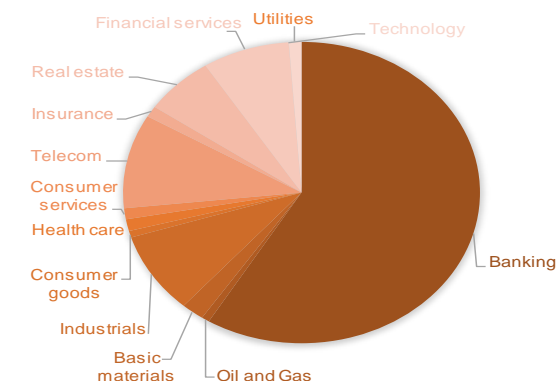
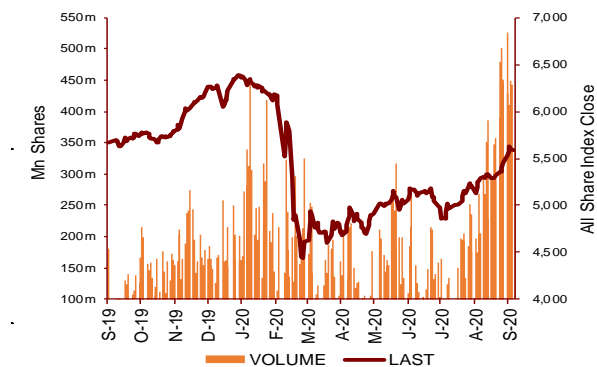
Today's Top 5 Gainer %	Close KD	Value KD	DTD (%)
Kuwait Hotels	0.084	1,680	9.92%
Dar Al Thuraya Real Estate	0.070	1,849	9.32%
Combined Group Contracting	0.188	795,162	9.30%
Gulf Insurance Group	0.715	1,430	9.16%
AAN Digital Services	0.014	776,322	7.94%

Today's Top 5 Loser %	Close KD	Value KD	DTD (%)
Metal and Recycling	0.039	516	-7.98%
Al Eid Food	0.059	1,244	-6.03%
Al Massaleh Real Estate	0.036	4,409	-5.45%
Tamdeen Real Estate	0.274	56,407	-5.19%
Tijara and Realestate Inves	0.039	86	-4.89%

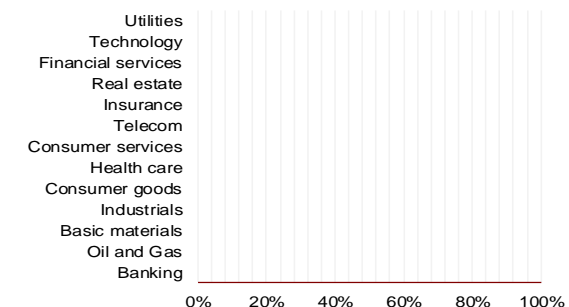
Today's Top 5 by Value	Close KD	DTD Chg	Trade Val Mn(KD)
Kuwait Finance House	0.677	-1.02%	9.29
National Bank of Kuwait	0.887	-0.34%	3.83
Mobile Telecommunications	0.582	-0.34%	2.26
Aayan Leasing and Investment	0.096	-2.63%	1.81
Warba Bank	0.254	0.79%	1.71

Top 5 by Volume	Close KD	DTD Chg	Trade Vol Mn(Shrs)
AAN Digital Services	0.014	7.94%	58.82
Investors Holding Group	0.017	-4.49%	33.71
Gulf Petroleum Investment	0.020	2.58%	24.13
Arzan Financial Group for f	0.057	1.79%	23.79
Aayan Leasing and Investrn	0.096	-2.63%	18.70

Sector	Close	DTD Chg Net	DTD (%)	YTD (%)	52W High	52W Low	MKT CAP Bn (KD)	PBV (X)	PE (X)	DY (%)
Banking	1,299.44	-7.140	-0.55%	0.0%	1,536.8	986.4	18.93	1.72	15.78	3.3%
Oil and Gas	1,147.77	1.280	0.11%	0.0%	1,372.2	985.7	0.23	0.83	26.87	5.3%
Basic materials	792.95	-1.570	-0.20%	0.0%	991.8	561.7	0.67	0.96	14.58	7.6%
Industrials	823.53	3.010	0.37%	0.0%	937.5	602.9	2.81	0.89	13.39	5.0%
Consumer goods	764.87	-0.320	-0.04%	0.0%	810.7	548.6	0.23	1.52	92.70	2.2%
Health care	820.13	0.000	0.00%	0.0%	921.9	815.0	0.41	4.14	48.09	1.0%
Consumer services	752.12	7.740	1.04%	0.0%	1,083.1	674.8	0.38	0.86	36.12	4.6%
Telecom	1,064.27	-3.840	-0.36%	0.0%	1,116.7	802.2	3.26	1.53	11.20	5.7%
Insurance	1,062.00	40.510	3.97%	0.0%	1,028.2	901.0	0.38	0.80	9.03	5.5%
Real estate	971.10	-2.610	-0.27%	0.0%	1,083.4	763.2	2.04	0.67	23.91	2.4%
Financial services	933.09	-3.070	-0.33%	0.0%	1,097.0	801.4	2.55	0.73	16.48	4.1%
Technology	524.53	-6.550	-1.23%	0.0%	632.9	371.0	0.01	0.57	-69.93	5.5%
Utilities	876.32	0.000	0.00%	0.0%	1,042.1	781.6	0.37	4.78	29.78	0.0%
	5,566.72	-17.70	-0.32%	-11.4%	6,416.4	4,339.6	32.26	1.29	15.58	3.77%



YTD Sector Performance %



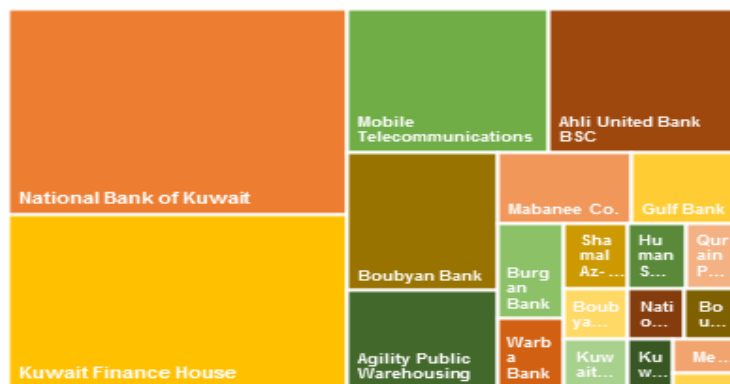
DAILY MARKET COVERAGE REPORT

NIC MENA SECURITIES - RESEARCH AND STUDIES DEP

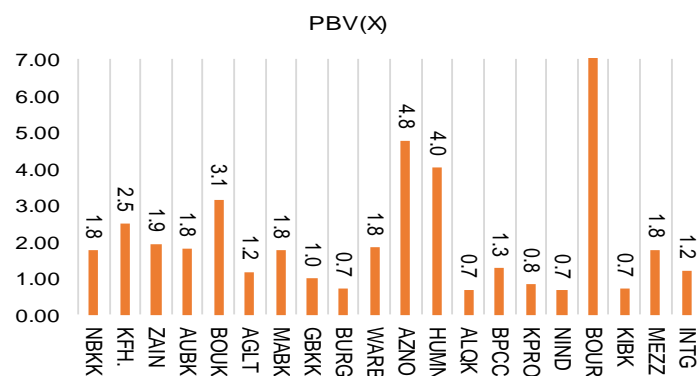


Premier Market	Price			Valuation Multiples			MKT Cap	Price Performance		Trading Indicators		ROE	ROA	52 Week (KD)	
	Close (KD)	Day Δ	Day % Δ	PBV(X)	PE(X)	DY%	Mn KD	MTD(%)	YTD (%)	Value (Mn KD)	(Mn Shrs)	(%)	(%)	High	Low
National Bank of Kuwait	0.887	-0.003	-0.34%	1.75	15.01	3.6%	6,024	3%	-13%	3.83	4.31	11.7%	1.4%	1.062	0.654
Kuwait Finance House	0.677	-0.007	-1.02%	2.49	20.47	2.4%	5,138	8%	-8%	9.29	13.63	12.2%	1.3%	0.761	0.473
Mobile Telecommunications	0.582	-0.002	-0.34%	1.94	11.61	5.4%	2,518	-1%	-3%	2.26	3.88	16.7%	4.6%	0.604	0.407
Ahli United Bank BSC	0.241	-0.002	-0.82%	1.82	10.61	5.0%	2,326	3%	-18%	1.58	6.57	17.1%	1.8%	0.311	0.160
Boubyan Bank	0.598	-0.003	-0.50%	3.15	28.90	1.1%	1,811	4%	-2%	0.58	0.96	10.9%	1.2%	0.638	0.380
Agility Public Warehousing	0.678	0.005	0.74%	1.18	14.95	2.7%	1,297	9%	-5%	0.68	1.01	7.9%	4.2%	0.748	0.357
Mabane Co.	0.751	0.000	0.00%	1.75	14.71	1.4%	830	18%	-12%	0.28	0.37	11.9%	5.8%	0.877	0.434
Gulf Bank	0.226	0.000	0.00%	0.99	10.31	4.4%	656	6%	-25%	1.29	5.70	9.6%	1.0%	0.317	0.180
Burgan Bank	0.208	-0.002	-0.95%	0.73	6.44	5.5%	545	5%	-32%	0.85	4.07	11.3%	1.2%	0.324	0.175
Warba Bank	0.254	0.002	0.79%	1.84	24.19	0.0%	400	0%	0%	1.71	6.75	7.6%	0.5%	0.279	0.164
Shamal Az-Zour Al-Oula Power & Water	0.333	0.000	0.00%	4.78	29.78	0.0%	366	0%	0%	0.74	2.24	16.1%	2.3%	0.500	0.297
Human Soft Holding	2.665	-0.013	-0.49%	4.03	9.04	6.9%	324	5%	-12%	0.59	0.22	44.6%	30.3%	3.470	1.944
Qurain Petrochemical Industries	0.280	-0.002	-0.71%	0.68	10.13	5.5%	286	-2%	-10%	0.13	0.47	6.7%	3.6%	0.323	0.163
Boubyan Petrochemical	0.564	0.001	0.18%	1.27	24.06	9.2%	284	5%	-16%	0.06	0.10	5.3%	2.1%	0.800	0.395
Kuwait Projects Company Holding	0.156	0.001	0.65%	0.84	9.42	5.9%	283	5%	-28%	0.10	0.67	8.9%	0.3%	0.225	0.147
National Industries Group Holding	0.175	-0.001	-0.57%	0.66	5.39	6.2%	250	0%	0%	0.27	1.52	12.3%	3.7%	0.247	0.121
Boursa Kuwait Securities Co	1.163	-0.013	-1.11%	7.27	24.34	0.0%	234	0%	0%	0.51	0.44	29.9%	26.5%	1.210	0.990
Kuwait International Bank	0.195	0.001	0.52%	0.71	11.60	5.1%	199	0%	0%	1.68	8.59	6.1%	0.6%	0.270	0.162
Mezzan Holding	0.620	-0.001	-0.16%	1.79	33.50	2.7%	189	-5%	24%	0.08	0.13	5.3%	2.2%	0.665	0.428
Integrated Holding	0.380	0.000	0.00%	1.22	10.58	10.5%	84	9%	-31%	0.02	0.06	11.5%	8.5%	0.600	0.342
Total		-27.53	-0.45%	1.73	14.45	3.48%	24,044	0.0%	-11.8%	26.54	61.71	12.01%	1.56%		

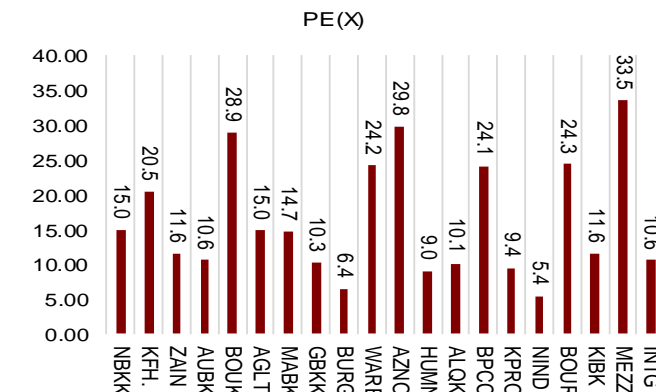
Market Capitalization



Price to Book Value

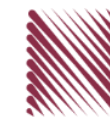


Price to Earning Value

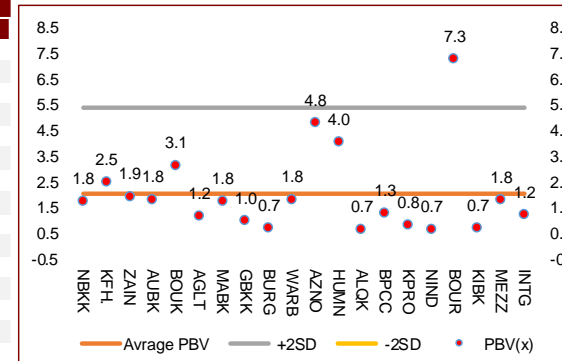


DAILY MARKET COVERAGE REPORT

NIC MENA SECURITIES - RESEARCH AND STUDIES DEP



Premier Market	Price			Valuation Multiples			MKT Cap	Price Performance		ROE	ROA
Company	Close (KD)	Day Δ	Day % Δ	PBV(X)	PE(X)	DY%	Mn KD	MTD(%)	YTD (%)	(%)	(%)
National Bank of Kuwait	0.887	-0.003	-0.34%	1.75	15.0	3.6%	6,024	3.3%	-12.9%	11.7%	1.4%
Kuwait Finance House	0.677	-0.007	-1.02%	2.49	20.5	2.4%	5,138	8.5%	-7.9%	12.2%	1.3%
Mobile Telecommunications	0.582	-0.002	-0.34%	1.94	11.6	5.4%	2,518	-1.4%	-3.0%	16.7%	4.6%
Ahli United Bank BSC	0.241	-0.002	-0.82%	1.82	10.6	5.0%	2,326	3.4%	-17.9%	17.1%	1.8%
Boubyan Bank	0.598	-0.003	-0.50%	3.15	28.9	1.1%	1,811	4.0%	-1.6%	10.9%	1.2%
Agility Public Warehousing	0.678	0.005	0.74%	1.18	15.0	2.7%	1,297	8.7%	-4.7%	7.9%	4.2%
Mabane Co.	0.751	0.000	0.00%	1.75	14.7	1.4%	830	18.4%	-11.7%	11.9%	5.8%
Gulf Bank	0.226	0.000	0.00%	0.99	10.3	4.4%	656	6.1%	-25.4%	9.6%	1.0%
Burgan Bank	0.208	-0.002	-0.95%	0.73	6.4	5.5%	545	5.1%	-31.6%	11.3%	1.2%
Warba Bank	0.254	0.002	0.79%	1.84	24.2	0.0%	400	0.0%	0.0%	7.6%	0.5%
Shamal Az-Zour Al-Oula Power & Water	0.333	0.000	0.00%	4.78	29.8	0.0%	366	0.0%	0.0%	16.1%	2.3%
Human Soft Holding	2.665	-0.013	-0.49%	4.03	9.0	6.9%	324	5.3%	-11.6%	44.6%	30.3%
Qurain Petrochemical Industries	0.280	-0.002	-0.71%	0.68	10.1	5.5%	286	-2.1%	-10.0%	6.7%	3.6%
Boubyan Petrochemical	0.564	0.001	0.18%	1.27	24.1	9.2%	284	5.2%	-15.6%	5.3%	2.1%
Kuwait Projects Company Holding	0.156	0.001	0.65%	0.84	9.4	5.9%	283	4.7%	-27.8%	8.9%	0.3%
National Industries Group Holding	0.175	-0.001	-0.57%	0.66	5.4	6.2%	250	0.0%	0.0%	12.3%	3.7%
Boursa Kuwait Securities Co	1.163	-0.013	-1.11%	7.27	24.3	0.0%	234	0.0%	0.0%	29.9%	26.5%
Kuwait International Bank	0.195	0.001	0.52%	0.71	11.6	5.1%	199	0.0%	0.0%	6.1%	0.6%
Mezzan Holding	0.620	-0.001	-0.16%	1.79	33.5	2.7%	189	-4.6%	24.0%	5.3%	2.2%
Integrated Holding	0.380	0.000	0.00%	1.22	10.6	10.5%	84	8.6%	-31.0%	11.5%	8.5%
Total		-27.53	-0.45%	1.73	14.45	3.48%	24,044	0.0%	-11.8%	12.01%	1.56%



Premier Market	Price			Moving Average		RSI	MKT Cap	Price Performance		52 Week (KD)	
Description	Close (KD)	Day Δ	Day % Δ	50 Day	200 Day	14 Day	Mn KD	MTD(%)	YTD (%)	High	Low
Premier Index	6,156	-27.53	-0.45%	5,727	5,885	88	24,044	0.0%	0.0%	7,172	4,499

Top 5 Performrs (Today's Price Change)

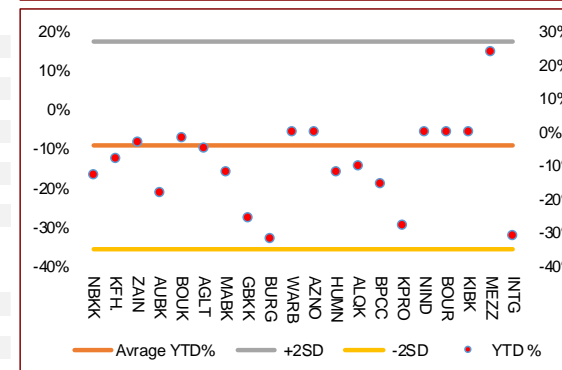
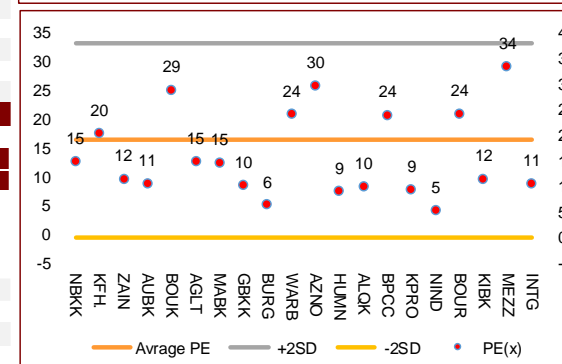
Warba Bank	0.254	0.002	0.79%	0.210	0.220	79	400	0.0%	0.0%	0.279	0.164
Agility Public Warehousing	0.678	0.005	0.74%	0.637	0.614	86	1,297	8.7%	-4.7%	0.748	0.357
Kuwait Projects Company Holding	0.156	0.001	0.65%	0.152	0.178	63	283	4.7%	-27.8%	0.225	0.147
Kuwait International Bank	0.195	0.001	0.52%	0.175	0.205	76	199	0.0%	0.0%	0.270	0.162
Boubyan Petrochemical	0.564	0.001	0.18%	0.556	0.575	70	284	5.2%	-15.6%	0.800	0.395

Middle Performrs (Today's Price Change)

Mabane Co.	0.751	0.000	0.00%	0.650	0.683	91	830	18.4%	-11.7%	0.877	0.434
Gulf Bank	0.226	0.000	0.00%	0.209	0.237	76	656	6.1%	-25.4%	0.317	0.180
Integrated Holding	0.380	0.000	0.00%	0.374	0.449	41	84	8.6%	-31.0%	0.600	0.342
Shamal Az-Zour Al-Oula Power & Water	0.333	0.000	0.00%	0.205	0.051	63	366	0.0%	0.0%	0.500	0.297
Mezzan Holding	0.620	-0.001	-0.16%	0.616	0.556	42	189	-4.6%	24.0%	0.665	0.428
National Bank of Kuwait	0.887	-0.003	-0.34%	0.833	0.849	76	6,024	3.3%	-12.9%	1.062	0.654
Mobile Telecommunications	0.582	-0.002	-0.34%	0.569	0.548	65	2,518	-1.4%	-3.0%	0.604	0.407
Human Soft Holding	2.665	-0.013	-0.49%	2.658	2.798	53	324	5.3%	-11.6%	3.470	1.944
Boubyan Bank	0.598	-0.003	-0.50%	0.563	0.544	56	1,811	4.0%	-1.6%	0.638	0.380
National Industries Group Holding	0.175	-0.001	-0.57%	0.100	0.100	76	250	0.0%	0.0%	1.210	0.996

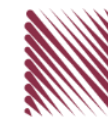
Bottom 5 Performrs (Today's Price Change)

Boursa Kuwait Securities Co	1.163	-0.013	-1.11%	0.242	0.061	73	234	0.0%	0.0%	1.210	0.990
Kuwait Finance House	0.677	-0.007	-1.02%	0.618	0.639	80	5,138	8.5%	-7.9%	0.761	0.473
Burgan Bank	0.208	-0.002	-0.95%	0.195	0.230	73	545	5.1%	-31.6%	0.324	0.175
Ahli United Bank BSC	0.241	-0.002	-0.82%	0.215	0.228	73	2,326	3.4%	-17.9%	0.311	0.160
Qurain Petrochemical Industries	0.280	-0.002	-0.71%	0.282	0.267	59	286	-2.1%	-10.0%	0.323	0.163



DAILY MARKET COVERAGE REPORT

NIC MENA SECURITIES - RESEARCH AND STUDIES DEP



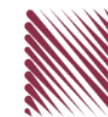
Banking Sector	Price			Valuation Multiples			MKT Cap	Price Performance		Trading Indicators		ROE	ROA	52 Week (KD)	
	Company	Close (KD)	Day Δ	Day % Δ	PBV(X)	PE(X)		DY%	Mn KD	MTD(%)	YTD (%)			Value (Mn KD)	(Mn Shrs)
National Bank of Kuwait	0.887	-0.003	-0.34%	1.75	15.01	3.6%	6,024	3%	-13%	3.83	4.31	11.7%	1.4%	1.062	0.654
Kuwait Finance House	0.677	-0.007	-1.02%	2.49	20.47	2.4%	5,138	8%	-8%	9.29	13.63	12.2%	1.3%	0.761	0.473
Ahli United Bank BSC	0.241	-0.002	-0.82%	1.82	10.61	5.0%	2,326	3%	-18%	1.58	6.57	17.1%	1.8%	0.311	0.160
Boubyan Bank	0.598	-0.003	-0.50%	3.15	28.90	1.1%	1,811	4%	-2%	0.58	0.96	10.9%	1.2%	0.638	0.380
Commercial Bank of Kuwait	0.500	0.000	0.00%	1.32	0.00	3.7%	965	0%	-5%	0.01	0.01	0.0%	0.0%	0.555	0.465
Gulf Bank	0.226	0.000	0.00%	0.99	10.31	4.4%	656	6%	-25%	1.29	5.70	9.6%	1.0%	0.317	0.180
Ahli United Bank	0.285	-0.003	-1.04%	1.22	10.10	4.8%	556	10%	-13%	0.15	0.54	12.1%	1.3%	0.330	0.225
Burgan Bank	0.208	-0.002	-0.95%	0.73	6.44	5.5%	545	5%	-32%	0.85	4.07	11.3%	1.2%	0.324	0.175
Warba Bank	0.254	0.002	0.79%	1.84	24.19	0.0%	400	0%	0%	1.71	6.75	7.6%	0.5%	0.279	0.164
Al Ahli Bank of Kuwait	0.196	0.003	1.55%	0.56	10.98	7.1%	315	15%	-23%	1.05	5.40	5.1%	0.6%	0.307	0.156
Kuwait International Bank	0.195	0.001	0.52%	0.71	11.60	5.1%	199	0%	0%	1.68	8.59	6.1%	0.6%	0.270	0.162
Total Banking Sector - 11 Companies				1.72	15.78	3.3%	18,934			22.02	56.54	10.90%	1.21%		

Basic materials	Price			Valuation Multiples			MKT Cap	Price Performance		Trading Indicators		ROE	ROA	52 Week (KD)	
	Company	Close (KD)	Day Δ	Day % Δ	PBV(X)	PE(X)		DY%	Mn KD	MTD(%)	YTD (%)			Value (Mn KD)	(Mn Shrs)
Qurain Petrochemical Industries	0.280	-0.002	-0.71%	0.68	10.13	5.5%	286	-2%	-10%	0.13	0.47	6.7%	3.6%	0.323	0.163
Boubyan Petrochemical	0.564	0.001	0.18%	1.27	24.06	9.2%	284	5%	-16%	0.06	0.10	5.3%	2.1%	0.800	0.395
Al Kout Industrial Projects	0.769	0.000	0.00%	2.50	16.21	6.5%	78	0%	-10%	0.00	0.00	15.4%	11.3%	0.850	0.769
Kuwait Foundry	0.258	0.003	1.18%	0.86	20.85	20.7%	19	8%	-23%	0.00	0.01	4.1%	3.8%	0.495	0.192
Total Basic materials - 4 Companies				0.96	14.58	7.6%	667			0.19	0.58	6.57%	5.07%		

Consumer goods	Price			Valuation Multiples			MKT Cap	Price Performance		Trading Indicators		ROE	ROA	52 Week (KD)	
	Company	Close (KD)	Day Δ	Day % Δ	PBV(X)	PE(X)		DY%	Mn KD	MTD(%)	YTD (%)			Value (Mn KD)	(Mn Shrs)
Mezzan Holding	0.620	-0.001	-0.16%	1.79	33.50	2.7%	189	-5%	24%	0.08	0.13	5.3%	2.2%	0.665	0.428
Livestock Transport and Trading	0.185	0.001	0.54%	0.96	32.97	0.1%	39	0%	6%	0.01	0.07	2.9%	2.0%	0.200	0.152
Danah Al Safat Foodstuff	0.012	0.000	0.00%	0.25	(0.30)	0.1%	1	0%	-25%	0.00	0.00	-84.8%	-43.2%	0.029	0.010
Total Basic materials - 3 Companies				1.52	92.70	2.2%	229			0.09	0.20	1.64%	0.90%		

DAILY MARKET COVERAGE REPORT

NIC MENA SECURITIES - RESEARCH AND STUDIES DEP



Consumer services	Price			Valuation Multiples			MKT Cap	Price Performance		Trading Indicators		ROE	ROA	52 Week (KD)	
Company	Close (KD)	Day Δ	Day % Δ	PBV(X)	PE(X)	DY%	Mn KD	MTD(%)	YTD (%)	Value (Mn KD)	(Mn Shrs)	(%)	(%)	High	Low
Jazeera Airways	0.604	0.021	3.60%	3.00	8.09	5.8%	121	0%	0%	0.64	1.08	37.1%	9.0%	1.110	0.372
Kuwait National Cinema	0.700	0.000	0.00%	0.80	7.57	6.9%	65	4%	-33%	0.00	0.00	10.6%	7.2%	1.050	0.600
Oula Fuel Marketing	0.112	0.002	1.82%	0.67	11.72	5.3%	45	0%	0%	0.02	0.15	5.7%	3.2%	0.134	0.095
Al Soor Fuel Marketing	0.111	-0.003	-2.63%	0.68	12.99	4.5%	45	0%	0%	0.00	0.02	5.3%	3.7%	0.129	0.096
Sultan Center Food Products	0.055	0.000	-0.73%	0.68	13.76	0.0%	31	0%	0%	0.20	3.62	4.9%	0.7%	0.060	0.036
IFA Hotels and Resorts	0.024	0.000	0.00%	0.85	(0.65)	0.0%	15	-5%	-57%	0.00	0.19	-131.5%	-8.1%	0.062	0.021
Jiyad Holding	0.044	0.001	1.61%	0.40	8.82	0.0%	15	35%	13%	0.02	0.53	4.5%	2.8%	0.047	0.029
Kuwait Resorts	0.055	0.001	1.30%	0.37	9.93	0.0%	11	0%	0%	0.08	1.45	3.8%	3.2%	0.060	0.038
Alrai Media Group	0.037	0.000	0.00%	0.83	(2.41)	0.0%	9	0%	-2%	0.00	0.00	-34.2%	-20.0%	0.045	0.031
Future Kid Entertainment and Real Estate	0.080	0.000	0.00%	0.46	30.22	14.4%	9	0%	0%	0.00	0.00	1.5%	0.9%	0.110	0.069
Al Eid Food	0.059	-0.004	-6.03%	0.40	4.73	0.0%	7	7%	-10%	0.00	0.02	8.4%	6.1%	0.080	0.038
Kuwait Hotels	0.084	0.008	9.92%	1.19	(4.86)	0.0%	5	0%	0%	0.00	0.02	-24.4%	-13.2%	0.101	0.069
Palms Agro Production	0.065	0.000	0.00%	0.55	(45.82)	15.3%	3	0%	0%	0.00	0.00	-1.2%	-0.9%	0.065	0.025
Kuwait Cable Vision	0.014	0.000	0.00%	0.52	(11.65)	0.0%	1	0%	0%	0.00	0.00	-4.5%	-3.0%	0.026	0.012
Total Consumer services - 14 Companies				0.86	36.12	4.6%	380			0.97	7.07	2.38%	2.72%		

Financial services	Price			Valuation Multiples			MKT Cap	Price Performance		Trading Indicators		ROE	ROA	52 Week (KD)	
Company	Close (KD)	Day Δ	Day % Δ	PBV(X)	PE(X)	DY%	Mn KD	MTD(%)	YTD (%)	Value (Mn KD)	(Mn Shrs)	(%)	(%)	High	Low
Egypt Kuwait Holding	0.365	0.000	0.00%	2.16	12.32	5.4%	374	-2%	-19%	0.00	0.00	17.6%	7.1%	0.500	0.318
Kuwait Projects Company Holding	0.156	0.001	0.65%	0.84	9.42	5.9%	283	5%	-28%	0.10	0.67	8.9%	0.3%	0.225	0.147
National Industries Group Holding	0.175	-0.001	-0.57%	0.66	5.39	6.2%	250	0%	0%	0.27	1.52	12.3%	3.7%	0.247	0.121
Boursa Kuwait Securities Co	1.163	-0.013	-1.11%	7.27	24.34	0.0%	234	0%	0%	0.51	0.44	29.9%	26.5%	1.210	0.990
GFH Financial Group	0.050	-0.001	-1.95%	0.55	6.86	5.7%	170	-1%	-27%	0.15	2.88	8.0%	1.3%	0.074	0.042
National Investments	0.138	-0.002	-1.43%	0.61	10.26	5.9%	110	0%	0%	0.32	2.33	5.9%	5.0%	0.158	0.080
Tamdeen Investment	0.305	0.000	0.00%	0.37	12.65	3.9%	104	0%	0%	0.01	0.02	3.0%	2.2%	0.400	0.199
Alimtiiaz Investment Group	0.098	-0.001	-1.11%	0.47	5.10	8.1%	101	15%	-22%	0.21	2.12	9.1%	5.2%	0.137	0.071
Commercial Facilities	0.186	0.003	1.64%	0.58	7.17	9.0%	94	1%	-14%	0.00	0.00	8.0%	4.2%	0.235	0.179
Aayan Leasing and Investment	0.096	-0.003	-2.63%	1.13	(5.27)	1.9%	77	63%	106%	1.81	18.70	-21.4%	-4.9%	0.102	0.032
Kuwait Investment	0.133	0.003	2.31%	0.58	4.16	7.6%	73	0%	0%	0.09	0.67	13.9%	6.0%	0.172	0.095
Noor Financial Investment	0.169	-0.003	-1.74%	1.03	8.26	2.9%	67	0%	0%	0.02	0.10	12.5%	7.5%	0.184	0.076

DAILY MARKET COVERAGE REPORT

NIC MENA SECURITIES - RESEARCH AND STUDIES DEP



Financial services	Price			Valuation Multiples			MKT Cap	Price Performance		Trading Indicators		ROE	ROA	52 Week (KD)	
	Company	Close (KD)	Day Δ	Day % Δ	PBV(X)	PE(X)	DY%	Mn KD	MTD(%)	YTD (%)	Value (Mn KD)	(Mn Shrs)	(%)	(%)	High
Arzan Financial Group for Financing and Invest	0.057	0.001	1.79%	0.46	41.44	0.0%	45	-2%	140%	1.35	23.79	1.1%	0.7%	0.064	0.022
Gulf Investment House	0.098	0.002	1.98%	1.10	181.27	0.0%	40	5%	52%	0.18	1.92	0.6%	0.5%	0.108	0.038
Kuwait Financial Centre	0.088	-0.001	-0.79%	0.44	6.01	5.6%	42	0%	0%	0.01	0.16	7.3%	3.5%	0.121	0.070
Al Bareeq Holding	0.079	0.000	0.00%	0.83	15.80	0.0%	35	-25%	-21%	0.00	0.00	5.2%	5.0%	0.110	0.079
Arabi Group Holdings	0.198	0.000	0.00%	1.07	(19.90)	0.0%	33	0%	-28%	0.00	0.00	-5.4%	-0.6%	0.337	0.088
Kuwait and Middle East Financial Investment	0.111	0.001	0.91%	1.80	44.33	0.0%	29	0%	0%	0.04	0.40	4.1%	3.2%	0.138	0.063
Privatization Holding	0.043	-0.001	-1.59%	0.32	(39.04)	0.0%	26	0%	0%	0.02	0.58	-0.8%	-0.5%	0.059	0.037
Umm Al Qaiwain General Investment Co	0.072	0.000	0.00%	0.48	13.53	5.1%	26	0%	0%	0.00	0.00	3.6%	3.3%	0.096	0.052
KAMCO Investment	0.073	-0.001	-1.36%	0.44	8.18	0.0%	25	4%	-19%	0.09	1.20	5.4%	2.3%	0.111	0.060
Asiya Capital Investments	0.033	-0.001	-2.69%	0.35	16.80	0.2%	25	5%	-20%	0.00	0.08	2.1%	2.0%	0.041	0.029
Securities House	0.045	0.000	0.00%	0.61	(65.79)	0.0%	25	0%	0%	0.09	2.05	-0.9%	-0.7%	0.050	0.027
Inovent BSC Public	0.078	0.002	2.51%	0.54	10.40	7.6%	23	37%	21%	0.03	0.37	5.2%	2.9%	0.080	0.044
Coast Investment and Development	0.036	0.000	0.56%	0.38	36.08	0.0%	21	6%	-9%	0.02	0.43	1.1%	1.0%	0.045	0.026
First Investment	0.032	-0.001	-3.88%	0.50	(0.44)	0.0%	21	0%	0%	0.13	4.08	-113.6%	-62.0%	0.045	0.022
Al Madar Finance and Investment	0.084	0.000	0.00%	0.76	12.53	0.0%	17	0%	0%	0.06	0.73	6.1%	5.0%	0.148	0.062
Bayan Investment	0.047	0.000	-0.21%	0.47	(24.24)	0.0%	17	-2%	23%	0.00	0.00	-1.9%	-0.8%	0.053	0.031
Al Manar Financing and Leasing	0.049	0.000	0.00%	0.45	12.63	1.0%	15	0%	0%	0.00	0.01	3.5%	2.7%	0.060	0.037
Manazel Holding	0.034	0.000	0.00%	0.75	21.85	0.0%	15	0%	0%	0.03	0.82	3.4%	0.8%	0.048	0.021
Kuwait Finance and Investment	0.045	0.000	-0.22%	0.35	20.16	0.0%	14	0%	-9%	0.00	0.09	1.8%	1.2%	0.058	0.038
National International Holding	0.062	-0.001	-1.59%	0.33	7.46	4.7%	13	0%	0%	0.01	0.12	4.4%	3.3%	0.081	0.051
Osoul Investment	0.081	0.000	-0.25%	0.61	6.77	0.0%	12	0%	0%	0.00	0.05	9.0%	8.2%	0.121	0.070
UniCap Investment and Finance	0.047	0.000	-0.63%	0.48	(23.53)	0.0%	11	0%	0%	0.00	0.08	-2.0%	-1.0%	0.057	0.035
Amar Finance and Leasing	0.056	0.000	0.00%	0.63	46.88	0.0%	11	9%	47%	0.00	0.00	1.3%	1.2%	0.064	0.037
Gulf North Africa Holding	0.058	0.000	-0.51%	0.77	74.98	0.0%	9	4%	-6%	0.00	0.01	1.0%	0.6%	0.062	0.052
International Financial Advisors	0.031	0.000	0.00%	0.93	(0.42)	2.1%	8	0%	-42%	0.00	0.00	-222.8%	-19.3%	0.060	0.027
Al Salam Group Holding	0.029	0.000	0.70%	0.25	216.67	0.0%	8	0%	0%	0.20	6.77	0.1%	0.1%	0.033	0.018
Amwal International Investment	0.036	0.000	0.00%	0.66	13.16	0.0%	6	-1%	19%	0.00	0.00	5.0%	2.6%	0.044	0.030
Al Madina for Finance and Investment	0.013	0.000	3.08%	0.45	(2.52)	0.0%	5	0%	0%	0.13	9.68	-17.9%	-7.7%	0.019	0.009
Credit Rating and Collection	0.032	0.000	0.00%	0.97	(21.20)	0.0%	5	0%	0%	0.00	0.00	-4.6%	-4.3%	0.035	0.019
Ekttitab Holding	0.016	0.001	3.23%	0.38	(11.27)	0.0%	5	24%	6%	0.04	2.69	-3.4%	-3.0%	0.017	0.010
Warba Capital Holding	0.047	0.001	2.65%	0.52	(7.39)	0.0%	5	0%	0%	0.00	0.00	-7.0%	-6.2%	0.071	0.042
Kuwait Syrian Holding Co	0.027	0.000	0.00%	0.23	(13.79)	0.0%	5	0%	0%	0.00	0.00	-1.7%	-1.1%	0.043	0.022
National Consumer Holding	0.048	0.002	4.82%	0.53	235.16	0.0%	4	0%	0%	0.00	0.01	0.2%	0.2%	0.100	0.010
Al Deera Holding	0.016	0.000	0.00%	0.70	(9.02)	0.0%	3	0%	-20%	0.00	0.00	-7.7%	-1.7%	0.022	0.011
Al Mal Investment Company	0.009	0.000	0.00%	0.40	(0.85)	0.0%	3	0%	0%	0.02	1.85	-47.6%	-23.3%	0.016	0.008
Gulf Franchising Holding	0.048	0.000	0.00%	0.75	(2.08)	0.0%	2	0%	0%	0.00	0.00	-36.2%	-10.8%	0.160	0.001
Tamkeen Holding	0.005	0.000	0.00%	0.05	(7.18)	0.0%	0	0%	0%	0.00	0.00	-0.7%	-0.7%	0.005	0.005
Total Financial services - 49 Companies				0.73	16.48	4.1%	2,546			5.95	87.43	4.42%	4.14%		

DAILY MARKET COVERAGE REPORT

NIC MENA SECURITIES - RESEARCH AND STUDIES DEP

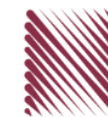


Health care	Price			Valuation Multiples			MKT Cap	Price Performance		Trading Indicators		ROE	ROA	52 Week (KD)	
Company	Close (KD)	Day Δ	Day % Δ	PBV(X)	PE(X)	DY%	Mn KD	MTD(%)	YTD (%)	Value (Mn KD)	(Mn Shrs)	(%)	(%)	High	Low
Al-Maidan Clinic for Oral Health Services	1.220	0.000	0.00%	7.90	47.78	0.6%	305	0%	0%	0.00	0.00	16.5%	10.9%	1.240	1.220
Advanced Technology	0.597	0.000	0.00%	1.55	48.60	2.5%	90	-5%	-26%	0.00	0.00	3.2%	0.7%	0.900	0.580
Yiaco Medical	0.707	0.000	0.00%	6.06	52.72	0.0%	12	0%	0%	0.00	0.00	11.5%	0.6%	0.707	0.707
Total Health care - 3 Companies				4.14	48.09	1.0%	407			0.00	0.00	8.61%	4.68%		

Industrials	Price			Valuation Multiples			MKT Cap	Price Performance		Trading Indicators		ROE	ROA	52 Week (KD)	
Company	Close (KD)	Day Δ	Day % Δ	PBV(X)	PE(X)	DY%	Mn KD	MTD(%)	YTD (%)	Value (Mn KD)	(Mn Shrs)	(%)	(%)	High	Low
Agility Public Warehousing	0.678	0.005	0.74%	1.18	14.95	2.7%	1,297	9%	-5%	0.68	1.01	7.9%	4.2%	0.748	0.357
Human Soft Holding	2.665	-0.013	-0.49%	4.03	9.04	6.9%	324	5%	-12%	0.59	0.22	44.6%	30.3%	3.470	1.944
ALAFCO Aviation Lease and Finance	0.166	-0.001	-0.60%	0.50	8.93	6.0%	158	6%	-39%	0.21	1.25	5.5%	1.4%	0.278	0.138
Gulf Cable and Electrical Industries	0.718	-0.002	-0.28%	0.86	35.61	3.8%	151	11%	47%	0.13	0.18	2.4%	2.2%	0.742	0.390
Kuwait Cement	0.203	-0.002	-0.98%	0.69	36.03	7.3%	145	17%	-17%	0.07	0.34	1.9%	1.3%	0.270	0.144
Integrated Holding	0.380	0.000	0.00%	1.22	10.58	10.5%	84	9%	-31%	0.02	0.06	11.5%	8.5%	0.600	0.342
Kuwait Portland Cement	0.768	0.002	0.26%	1.03	10.14	12.8%	77	0%	0%	0.07	0.09	10.2%	8.2%	1.150	0.683
Educational Holding Group	0.309	0.000	0.00%	1.79	9.78	4.8%	76	3%	-30%	0.00	0.00	18.3%	16.7%	0.475	0.228
United Projects for Aviation Services	0.465	0.000	0.00%	0.98	7.96	4.5%	74	0%	0%	0.00	0.00	12.3%	7.8%	0.512	0.367
Heavy Engineering Industries and Shipbuilding	0.377	0.003	0.80%	1.09	6.05	7.8%	68	0%	0%	0.09	0.24	18.0%	5.9%	0.419	0.298
National Industries	0.155	0.004	2.65%	0.64	12.63	6.4%	54	0%	0%	0.00	0.01	5.1%	3.8%	0.173	0.143
Kuwait Company for Process Plant Constructi	0.314	0.005	1.62%	1.24	6.73	5.7%	33	1%	30%	0.03	0.09	18.5%	7.7%	0.337	0.175
ACICO Industries	0.101	0.000	0.00%	0.32	13.15	4.9%	33	7%	-24%	0.00	0.00	2.5%	0.6%	0.139	0.081
Ras Al Khaimah for White Cement and Constr	0.065	0.000	0.00%	0.51	19.94	8.4%	33	0%	0%	0.00	0.00	2.6%	2.0%	0.080	0.055
Combined Group Contracting	0.188	0.016	9.30%	0.65	8.47	10.9%	31	21%	-24%	0.80	4.50	7.7%	1.2%	0.251	0.138
Gulf Cement	0.034	0.001	1.51%	0.33	(12.26)	12.4%	28	18%	-36%	0.00	0.07	-2.7%	-2.2%	0.060	0.029
Sharjah Cement and Industrial Development	0.042	0.000	0.00%	0.21	25.32	12.4%	26	0%	0%	0.00	0.00	0.8%	0.6%	0.064	0.042
KGL Logistics	0.028	-0.001	-2.08%	0.21	4.60	0.1%	22	0%	0%	0.07	2.47	4.6%	2.9%	0.043	0.023
Shuaiba Industrial	0.130	0.000	0.00%	0.72	40.15	7.6%	13	0%	0%	0.00	0.00	1.8%	1.4%	0.180	0.122
Kuwait and Gulf Link Transport	0.051	0.000	-0.20%	0.21	15.33	0.0%	14	0%	0%	0.15	2.91	1.4%	0.4%	0.077	0.042
Fujairah Cement Industries	0.036	0.000	0.00%	0.15	17.22	11.8%	13	13%	-21%	0.00	0.00	0.8%	0.4%	0.052	0.029
National Cleaning	0.057	0.000	-0.52%	0.34	7.64	8.9%	12	10%	-17%	0.02	0.28	4.4%	1.5%	0.088	0.047
Hilal Cement	0.114	0.000	0.00%	0.99	(9.37)	13.2%	12	-1%	14%	0.00	0.00	-10.6%	-6.2%	0.126	0.063
Mubarrad Holding	0.064	0.000	-0.16%	0.50	10.28	7.4%	10	0%	0%	0.10	1.66	4.9%	4.1%	0.089	0.049
Specialities Group Holding	0.065	0.000	-0.62%	0.35	7.67	0.0%	10	0%	0%	0.02	0.34	4.5%	3.5%	0.078	0.050
National Ranges	0.015	0.000	2.74%	0.27	(1.10)	0.0%	4	0%	0%	0.00	0.18	-24.9%	-5.3%	0.018	0.007
Metal and Recycling	0.039	-0.003	-7.98%	0.33	(1.66)	0.0%	4	0%	0%	0.00	0.01	-19.7%	-10.1%	0.070	0.020
Salbookh Trading	0.036	0.000	0.00%	0.49	(2.10)	0.0%	4	0%	0%	0.00	0.01	-23.2%	-15.9%	0.051	0.026
Equipment Holding	0.016	0.000	1.90%	0.32	(185.92)	0.0%	2	9%	-26%	0.00	0.23	-0.2%	-0.1%	0.024	0.013
Total Industrials - 29 Companies				0.89	13.39	5.0%	2,810			3.06	16.16	6.67%	5.05%		

DAILY MARKET COVERAGE REPORT

NIC MENA SECURITIES - RESEARCH AND STUDIES DEP



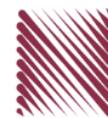
Insurance		Price			Valuation Multiples			MKT Cap	Price Performance		Trading Indicators		ROE	ROA	52 Week (KD)	
Company	Close (KD)	Day Δ	Day % Δ	PBV(X)	PE(X)	DY%	Mn KD	MTD(%)	YTD (%)	Value (Mn KD)	(Mn Shrs)	(%)	(%)	High	Low	
Gulf Insurance Group	0.715	0.060	9.16%	1.22	9.97	5.2%	133	6%	-2%	0.00	0.00	12.3%	1.7%	0.720	0.550	
Al Ahleia Insurance	0.408	0.000	0.00%	0.77	8.22	8.2%	84	7%	0%	0.00	0.00	9.4%	3.3%	0.445	0.367	
Kuwait Insurance	0.380	0.020	5.56%	0.62	7.36	6.3%	70	0%	0%	0.04	0.12	8.5%	4.6%	0.387	0.300	
Kuwait Reinsurance	0.218	0.000	0.00%	0.83	9.33	2.0%	44	0%	0%	0.00	0.01	8.9%	3.2%	0.221	0.126	
Bahrain Kuwait Insurance	0.200	0.000	0.00%	0.93	12.87	6.1%	28	0%	0%	0.00	0.00	7.2%	1.1%	0.200	0.200	
Warba Insurance	0.075	0.000	-0.13%	0.33	10.63	0.0%	12	0%	0%	0.00	0.05	3.1%	1.0%	0.094	0.051	
First Takaful Insurance	0.038	-0.002	-4.28%	0.46	4.82	0.0%	4	-5%	0%	0.00	0.07	9.6%	5.9%	0.056	0.031	
Wethaq Takaful Insurance	0.023	0.000	1.33%	0.21	(28.98)	0.0%	3	0%	0%	0.00	0.15	-0.7%	-0.7%	0.035	0.018	
Total Insurance - 8 Companies				0.80	9.03	5.5%	379			0.06	0.40	8.86%	3.00%			

Oil and Gas		Price			Valuation Multiples			MKT Cap	Price Performance		Trading Indicators		ROE	ROA	52 Week (KD)	
Company	Close (KD)	Day Δ	Day % Δ	PBV(X)	PE(X)	DY%	Mn KD	MTD(%)	YTD (%)	Value (Mn KD)	(Mn Shrs)	(%)	(%)	High	Low	
National Petroleum Services	1.100	0.000	0.00%	2.62	9.38	6.4%	107	0%	0%	0.00	0.00	27.9%	23.6%	1.389	0.903	
Independent Petroleum Group	0.430	0.000	0.00%	0.79	11.72	7.0%	78	-4%	-11%	0.00	0.00	6.8%	2.2%	0.497	0.375	
Burgan for Well Drilling Trading and Maintenanc	0.082	0.000	-0.37%	0.30	8.30	0.0%	19	8%	-7%	0.00	0.03	3.6%	1.1%	0.098	0.060	
Energy House Holding	0.020	0.000	0.00%	0.63	(2.80)	0.0%	15	3%	-11%	0.00	0.02	-22.5%	-17.0%	0.036	0.014	
Gulf Petroleum Investment	0.020	0.001	2.58%	0.22	(6.41)	0.0%	9	3%	-1%	0.48	24.13	-3.4%	-2.3%	0.023	0.012	
Senergy Holding	0.019	0.001	2.65%	0.39	(0.81)	0.0%	4	0%	0%	0.01	0.69	-47.9%	-30.4%	0.027	0.014	
Total Oil and Gas - 6 Companies				0.83	26.87	5.3%	231			0.50	24.86	3.10%	2.18%			

Real estate		Price			Valuation Multiples			MKT Cap	Price Performance		Trading Indicators		ROE	ROA	52 Week (KD)	
Company	Close (KD)	Day Δ	Day % Δ	PBV(X)	PE(X)	DY%	Mn KD	MTD(%)	YTD (%)	Value (Mn KD)	(Mn Shrs)	(%)	(%)	High	Low	
Mabane Co.	0.751	0.000	0.00%	1.75	14.71	1.4%	830	18%	-12%	0.28	0.37	11.9%	5.8%	0.877	0.434	
Salhia Real Estate	0.406	0.004	1.00%	1.23	9.33	4.9%	201	2%	-3%	0.13	0.32	13.2%	5.8%	0.460	0.328	
Commercial Real Estate	0.103	0.000	0.00%	0.63	12.76	5.6%	186	0%	0%	0.01	0.09	5.0%	2.7%	0.111	0.083	
National Real Estate	0.076	0.001	0.66%	0.42	10.03	0.0%	115	9%	-12%	0.36	4.76	4.2%	2.4%	0.090	0.058	
Tamdeen Real Estate	0.274	-0.015	-5.19%	0.40	13.37	3.7%	110	0%	0%	0.06	0.21	3.0%	2.2%	0.343	0.241	
Kuwait Real Estate	0.097	-0.001	-0.92%	0.68	12.33	0.4%	87	0%	0%	0.03	0.30	5.5%	2.2%	0.115	0.070	
United Real Estate	0.051	0.001	1.20%	0.29	(7.53)	0.0%	54	0%	0%	0.00	0.00	-3.9%	-1.2%	0.063	0.045	
First Dubai for Real Estate Development	0.042	-0.001	-2.34%	0.56	45.84	0.9%	42	9%	17%	0.02	0.50	1.2%	1.0%	0.055	0.027	
Al Mazaya Holding	0.054	0.000	-0.18%	0.43	(3.88)	0.1%	34	0%	0%	0.01	0.13	-11.0%	-3.8%	0.067	0.047	
Ajial Real Estate Entertainment	0.142	0.000	0.00%	0.22	13.72	0.0%	27	8%	-18%	0.01	0.10	1.6%	1.4%	0.213	0.115	
Injazzat Real Estate Development	0.079	0.000	0.00%	0.51	(3.79)	8.7%	26	7%	-1%	0.00	0.00	-13.4%	-7.0%	0.091	0.061	

DAILY MARKET COVERAGE REPORT

NIC MENA SECURITIES - RESEARCH AND STUDIES DEP



Real estate Company	Price			Valuation Multiples			MKT Cap Mn KD	Price Performance		Trading Indicators		ROE (%)	ROA (%)	52 Week (KD)	
	Close (KD)	Day Δ	Day % Δ	PBV(X)	PE(X)	DY%		MTD(%)	YTD (%)	Value (Mn KD)	(Mn Shrs)			High	Low
Aayan Real Estate	0.060	-0.002	-2.44%	0.35	11.74	8.0%	25	17%	-18%	0.01	0.14	3.0%	1.9%	0.080	0.048
Al Argan International Real Estate	0.094	0.001	1.19%	0.27	30.37	5.2%	24	7%	-11%	0.00	0.01	0.9%	0.3%	0.135	0.060
Munshaat Real Estate Projects	0.074	0.003	4.23%	0.50	27.27	2.9%	24	0%	0%	0.01	0.14	1.8%	0.7%	0.090	0.045
Al-Enmaa Real Estate	0.050	0.000	-0.40%	0.50	13.30	0.0%	23	16%	-20%	0.01	0.30	3.8%	2.4%	0.079	0.037
Ream Real Estate	0.204	0.000	0.00%	1.56	(8.21)	1.1%	22	0%	0%	0.00	0.00	-19.0%	-10.1%	0.204	0.060
Arkan Al Kuwait Real Estate	0.086	0.004	4.91%	0.61	9.26	9.1%	21	2%	-4%	0.01	0.07	6.6%	3.5%	0.100	0.076
Kuwait Business Town Real Estate	0.031	0.000	-0.64%	0.28	7.92	0.2%	19	30%	-30%	0.05	1.70	3.6%	2.7%	0.046	0.022
Dalqan Real Estate	0.318	0.000	0.00%	2.91	58.98	0.0%	19	0%	0%	0.00	0.00	4.9%	4.9%	0.318	0.318
Sokouk Holding	0.029	-0.001	-2.00%	0.36	(4.91)	0.0%	17	0%	0%	0.12	3.94	-7.4%	-4.7%	0.040	0.022
Tijara and Realestate Investment	0.039	-0.002	-4.89%	0.37	10.23	5.1%	14	0%	0%	0.00	0.00	3.6%	1.9%	0.055	0.034
Al-Arabiya Real Estate	0.028	-0.001	-3.46%	0.24	8.46	2.2%	14	21%	-5%	0.27	9.72	2.9%	1.1%	0.033	0.020
Aqar Real Estate Investments	0.060	-0.002	-3.38%	0.43	5.01	8.3%	13	-8%	-25%	0.02	0.31	8.7%	7.3%	0.089	0.058
Mashaer Holding	0.061	-0.001	-2.26%	0.46	6.51	0.0%	11	0%	0%	0.01	0.23	7.1%	5.0%	0.086	0.048
Investors Holding Group	0.017	-0.001	-4.49%	0.86	(0.81)	0.0%	11	27%	113%	0.59	33.71	-106.5%	-57.2%	0.032	0.007
Dar Al Thuraya Real Estate	0.070	0.006	9.32%	0.67	18.56	0.0%	10	0%	0%	0.00	0.03	3.6%	3.6%	0.190	0.040
Osos Holding Group	0.090	0.000	0.00%	0.72	6.78	10.5%	9	0%	0%	0.00	0.00	10.5%	7.0%	0.118	0.083
Al Massaleh Real Estate	0.036	-0.002	-5.45%	0.41	(5.07)	0.0%	9	0%	0%	0.00	0.12	-8.1%	-1.9%	0.040	0.026
Abyaar Real Estate Development	0.007	0.000	0.00%	0.21	(0.51)	0.0%	8	0%	-6%	0.00	0.00	-40.9%	-12.4%	0.013	0.005
Kuwait Remal Real Estate	0.021	0.000	1.44%	0.32	(2.90)	0.0%	6	0%	0%	0.00	0.03	-11.0%	-3.9%	0.027	0.013
Kuwait Real Estate Holding	0.026	0.000	0.00%	0.04	0.69	6.8%	5	2%	-9%	0.00	0.00	5.5%	2.2%	0.034	0.022
Taameer Real Estate Investment	0.019	0.000	1.57%	0.29	(4.10)	0.0%	4	3%	-27%	0.06	2.92	-7.0%	-4.5%	0.034	0.013
Sanam Real Estate	0.035	0.002	6.06%	0.44	47.40	0.0%	4	0%	0%	0.00	0.00	0.9%	0.9%	0.043	0.027
Real Estate Trade Centers	0.028	-0.001	-4.76%	0.15	159.98	0.0%	4	0%	0%	0.00	0.03	0.1%	0.1%	0.050	0.018
Mena Real Estate	0.030	0.000	0.34%	0.20	(65.97)	0.0%	4	0%	0%	0.10	3.35	-0.3%	-0.2%	0.043	0.021
Al Masaken International Real Estate Developi	0.036	0.000	0.00%	0.40	43.60	0.5%	4	0%	0%	0.00	0.00	0.9%	0.4%	0.074	0.026
Ajwan Gulf Real Estate	0.011	0.000	0.00%	0.19	(7.68)	0.0%	2	0%	-29%	0.00	0.00	-2.5%	-2.2%	0.016	0.009
Effect Real Estate	0.021	0.000	0.00%	0.29	(8.85)	4.9%	2	0%	0%	0.00	0.00	-3.3%	-3.2%	0.021	0.021
Al Mudon International Real Estate	0.016	0.000	0.00%	0.12	(8.22)	0.0%	2	0%	-35%	0.00	0.00	-1.5%	-1.4%	0.029	0.015
Total Real estate - 39 Companies				0.67	23.91	2.4%	2,043			2.17	63.53	2.79%	2.96%		

DAILY MARKET COVERAGE REPORT

NIC MENA SECURITIES - RESEARCH AND STUDIES DEP



Technology	Price			Valuation Multiples			MKT Cap	Price Performance		Trading Indicators		ROE	ROA	52 Week (KD)	
	Company	Close (KD)	Day Δ	Day % Δ	PBV(X)	PE(X)		DY%	Mn KD	MTD(%)	YTD (%)			Value (Mn KD)	(Mn Shrs)
Automated Systems	0.072	-0.001	-1.23%	0.57	(69.93)	5.5%	7	7%	3%	0.00	0.03	-0.8%	-0.7%	0.087	0.051
Total Technology - 1 Companies				0.57	(69.93)	5.5%	7			0.00	0.03	-0.81%	-0.73%		

Telecom	Price			Valuation Multiples			MKT Cap	Price Performance		Trading Indicators		ROE	ROA	52 Week (KD)	
	Company	Close (KD)	Day Δ	Day % Δ	PBV(X)	PE(X)		DY%	Mn KD	MTD(%)	YTD (%)			Value (Mn KD)	(Mn Shrs)
Mobile Telecommunications	0.582	-0.002	-0.34%	1.94	11.61	5.4%	2,518	-1%	-3%	2.26	3.88	16.7%	4.6%	0.604	0.407
Kuwait Telecommunications	0.840	0.000	0.00%	1.95	9.62	4.2%	419	-1%	7%	0.03	0.03	20.2%	11.1%	0.870	0.680
National Mobile Telecommunications	0.611	-0.008	-1.29%	0.54	10.16	10.6%	306	6%	-26%	0.11	0.18	5.3%	2.4%	0.835	0.550
AAN Digital Services	0.014	0.001	7.94%	0.40	44.36	0.0%	12	30%	0%	0.78	58.82	0.9%	0.7%	0.021	0.009
Hayat Communications	0.059	0.000	0.00%	0.50	24.83	0.0%	5	0%	0%	0.00	0.00	2.0%	0.8%	0.098	0.033
Telecom - 5 Companies				1.53	11.20	5.7%	3,261			3.17	62.91	13.70%	7.86%		

Utilities	Price			Valuation Multiples			MKT Cap	Price Performance		Trading Indicators		ROE	ROA	52 Week (KD)	
	Company	Close (KD)	Day Δ	Day % Δ	PBV(X)	PE(X)		DY%	Mn KD	MTD(%)	YTD (%)			Value (Mn KD)	(Mn Shrs)
Shamal Az-Zour Al-Oula Power & Water	0.333	0.000	0.00%	4.78	29.78	0.0%	366	0%	0%	0.74	2.24	16.1%	2.3%	0.500	0.297
Total Utilities - 1 Companies				4.78	29.78	0.0%	366			0.74	2.24	16.06%	2.26%		

Total Market 173 Companies				1.29	15.58	3.77%	32,261			38.93	321.95	8.26%	2.76%		
-----------------------------------	--	--	--	-------------	--------------	--------------	---------------	--	--	--------------	---------------	--------------	--------------	--	--

End of Report

The information contained in this document is proprietary to NIC and is for use only by the persons to whom it is issued. This document is confidential and may not be distributed either in part or in whole without the express agreement of NIC. It is intended solely for the use of the individual or entity to whom it is addressed and others authorized to receive it.

Note : ROE and ROA is calculated based on LTM net profit & shareholders' equity and LTM Operating Profits & Total Assets

Sources : National Investments Company Research and Studies Departments



شركة الاستثمار الوطنية
NATIONAL INVESTMENTS COMPANY

Sharq, Al Mutanabi Street, Khaleejia Tower | P.O. Box 25667, Safat 13117, Kuwait

T.: +965 2226 6666 | Fax: +965 2226 6793 | www.nic.com.kw