

BOURSA KUWAIT
DAILY MARKET COVERAGE REPORT

Sunday, July 12, 2020

Kuwait Market Watch

Sunday, July 12, 2020

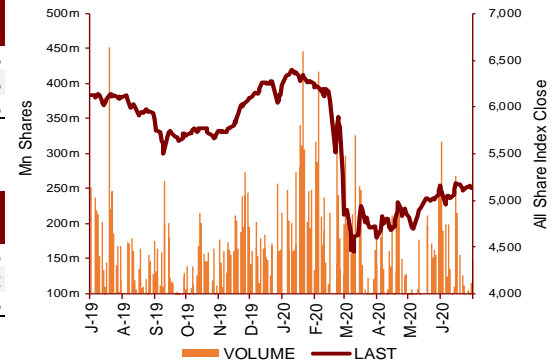
Index	Close	DTD Chg Net	DTD (%)	YTD (%)	52W High	52W Low	MKT CAP Bn (KD)	PBV (X)	PE (X)	DY (%)
All Share Index	5,155.6	24.170	0.47%	-18.0%	6,416.4	4,339.6	29.36	1.14	14.3	4.15%
Premier Index	5,636.3	32.220	0.57%	-19.2%	7,172.3	4,498.7	21.41	1.56	13.0	3.90%
Main Index	4,206.2	8.040	0.19%	-14.4%	4,932.5	3,965.6	7.96	0.66	19.6	4.80%

Value And Volume

Index	Value Mn(KD)	Vloume (Mn share)
All Share Index	37.88	215.41
Premier Index	32.52	105.38
Main Index	5.36	110.03

Market Breadth

	UP	Down	No Chg
All Share Index	49	50	75
Premier Index	8	8	2
Main Index	41	42	73



Today's Top 5 Gainer %

	Close KD	Value KD	DTD (%)
Ream Real Estate Company KSCf	0.107	938	19.96%
Noor Financial Investment Co K	0.157	542,029.8	18.05%
National Ranges Co KPSC	0.017	11,809	5.63%
Ahli United Bank BSC	0.192	12,351,552	5.49%
National International Holding	0.069	6.88	5.04%

Today's Top 5 Loser %

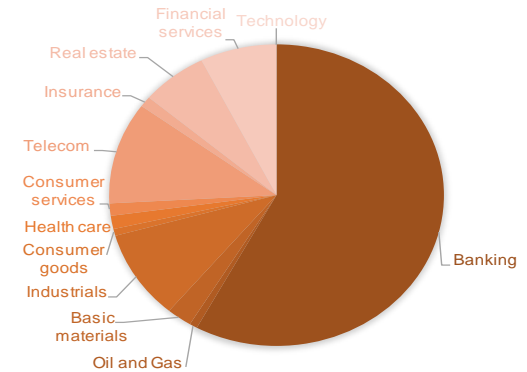
	Close KD	Value KD	DTD (%)
Metal and Recycling	0.043	662	-9.58%
Al-Enmaa Real Estate	0.043	4,571	-6.29%
AAN Digital Services	0.011	154,200	-5.36%
Ekttitab Holding Co	0.014	62,209	-5.30%
National Industries	0.152	2,586	-5.00%

Today's Top 5 by Value

	Close KD	DTD Chg	Trade Val Mn(KD)
Ahli United Bank BSC	0.192	5.49%	12.35
Agility Public Warehousing Co	0.783	2.09%	6.67
Kuwait Finance House KSC	0.600	-0.50%	6.36
Mobile Telecommunications Comp	0.563	-0.71%	1.65
National Bank of Kuwait SAKP	0.815	0.62%	1.35

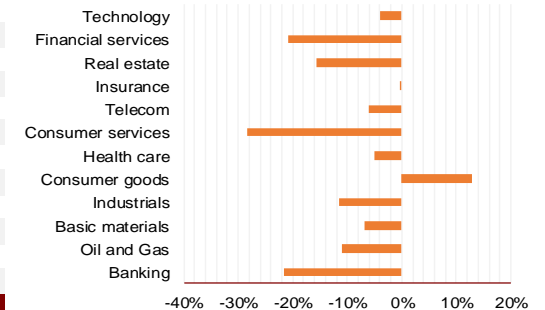
Top 5 by Volume

	Close KD	DTD Chg	Trade Vol Mn(Shrs)
Ahli United Bank BSC	0.192	5.49%	65.58
AAN Digital Services	0.011	-5.36%	14.49
First Investment Co	0.027	-1.85%	12.07
Ajwan Gulf Real Esta	0.012	3.54%	10.84
Kuwait Finance House	0.600	-0.50%	10.58



Sector	Close	DTD Chg Net	DTD (%)	YTD (%)	52W High	52W Low	MKT CAP Bn (KD)	PBV (X)	PE (X)	DY (%)
Banking	1,161.8	7.650	0.66%	-21.7%	1,536.8	986.4	17.00	1.43	14.17	3.7%
Oil and Gas	1,104.5	2.470	0.22%	-10.9%	1,372.2	985.7	0.22	0.80	25.85	5.5%
Basic materials	845.8	10.570	1.27%	-6.9%	1,127.9	561.7	0.71	1.02	15.57	7.1%
Industrials	822.9	9.460	1.16%	-11.4%	958.5	602.9	2.81	0.89	13.40	5.0%
Consumer goods	716.4	-4.010	-0.56%	12.8%	806.3	548.6	0.21	1.42	86.82	2.4%
Health care	839.2	0.000	0.00%	-5.1%	952.1	815.0	0.42	4.24	49.21	1.0%
Consumer services	768.4	-0.500	-0.07%	-28.3%	1,083.1	674.8	0.39	0.88	36.96	4.5%
Telecom	1,048.1	-6.480	-0.61%	-6.1%	1,116.7	802.2	3.21	1.51	11.03	5.7%
Insurance	950.7	-15.550	-1.61%	-0.3%	988.8	901.0	0.33	0.71	7.97	6.2%
Real estate	893.3	1.470	0.16%	-15.7%	1,083.4	763.2	1.88	0.61	21.99	2.6%
Financial services	855.2	2.980	0.35%	-20.8%	1,097.0	801.4	2.17	0.62	14.95	4.8%
Technology	494.7	0.000	0.00%	-4.0%	625.7	371.0	0.01	0.53	(65.96)	5.9%
							29.36			

YTD Sector Performance %

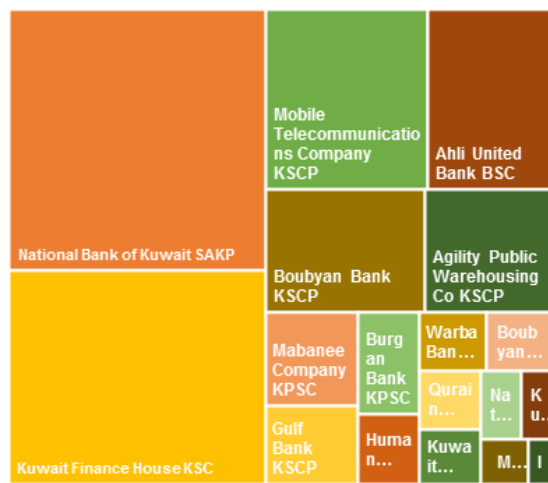


Premier Market

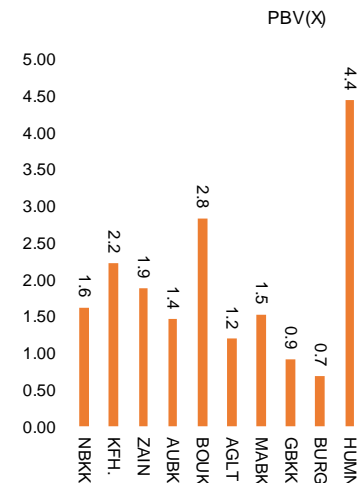
Sunday, July 12, 2020

Company	Price			Valuation Multiples			MKT Cap Mn KD	Price Performance		Trading Indicators		ROE (%)	ROA (%)	52 Week (KD)	
	Close (KD)	Day Δ	Day % Δ	PBV(X)	PE(X)	DY%		MTD(%)	YTD (%)	Value (Mn KD)	(Mn Shrs)			High	Low
National Bank of Kuwait SAKP	0.815	0.005	0.62%	1.61	13.80	3.9%	5,537	-1%	-20%	1.35	1.66	11.7%	1.4%	1.062	0.654
Kuwait Finance House KSC	0.600	-0.003	-0.50%	2.21	18.18	2.7%	4,562	-2%	-19%	6.36	10.58	12.2%	1.3%	0.761	0.473
Mobile Telecommunications Company KSCP	0.563	-0.004	-0.71%	1.88	11.23	5.5%	2,436	2%	-6%	1.65	2.92	16.7%	8.3%	0.604	0.407
Ahli United Bank BSC	0.192	0.010	5.49%	1.45	8.46	6.3%	1,853	9%	-35%	12.35	65.58	17.1%	1.8%	0.311	0.160
Boubyan Bank KSCP	0.537	0.001	0.19%	2.83	25.96	1.2%	1,626	1%	-12%	0.34	0.64	10.9%	1.2%	0.638	0.380
Agility Public Warehousing Co KSCP	0.783	0.016	2.09%	1.18	15.02	2.7%	1,303	7%	-4%	6.67	8.59	7.9%	6.5%	0.860	0.410
Mabane Company KPSC	0.654	-0.002	-0.30%	1.52	12.77	1.6%	720	-3%	-23%	0.17	0.26	11.9%	6.1%	0.877	0.434
Gulf Bank KSCP	0.209	0.000	0.00%	0.91	9.52	4.8%	606	-1%	-31%	1.00	4.82	9.6%	1.0%	0.323	0.180
Burgan Bank KPSC	0.194	0.000	0.00%	0.68	6.00	5.9%	508	-1%	-36%	0.10	0.53	11.3%	1.2%	0.359	0.178
Human Soft Holding Company KSCP	2.928	0.028	0.97%	4.43	9.93	6.3%	356	4%	-4%	0.11	0.04	44.6%	33.0%	3.490	1.944
Warba Bank KSCP	0.206	-0.001	-0.48%	1.49	19.62	0.0%	324	0%	-21%	0.04	0.21	7.6%	0.5%	0.279	0.164
Kuwait Projects Company Holding KSCP	0.157	-0.002	-1.26%	0.84	9.48	5.9%	285	-9%	-27%	0.12	0.75	8.9%	4.0%	0.231	0.152
Boubyan Petrochemical Company KSCP	0.620	0.003	0.49%	1.40	26.46	8.3%	313	1%	-7%	0.45	0.73	5.3%	3.1%	0.911	0.395
Qurain Petrochemical Industries Company KSCP	0.298	0.008	2.76%	0.73	10.81	5.1%	305	8%	-4%	0.77	2.61	6.7%	6.1%	0.360	0.163
National Industries Group Holding KPSC	0.162	-0.001	-0.61%	0.61	4.99	6.7%	231	-1%	-33%	0.43	2.64	12.3%	7.0%	0.261	0.121
Kuwait International Bank KSCP	0.175	0.001	0.57%	0.64	10.41	5.7%	178	-1%	-33%	0.43	2.44	6.1%	0.6%	0.277	0.164
Mezzan Holding Company KSCP	0.571	-0.006	-1.04%	1.65	30.86	2.9%	174	-3%	15%	0.06	0.10	5.3%	4.0%	0.645	0.428
Integrated Holding Co KSCC	0.402	-0.003	-0.74%	1.29	11.20	10.0%	88	-5%	-27%	0.11	0.28	11.5%	9.6%	0.605	0.360
Total				1.56	13.04	3.9%	21,407			32.52	105.38	11.9%	1.2%		

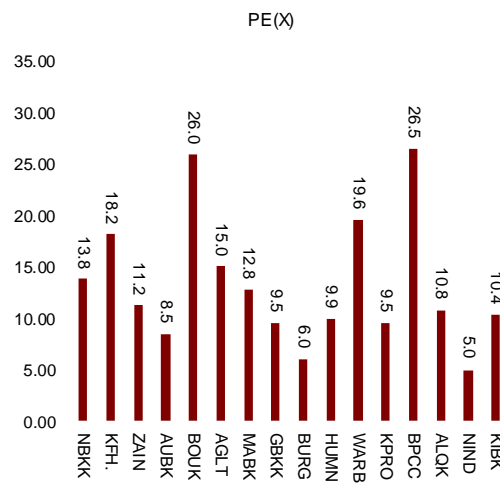
By Market Cap



By Price to Book Value



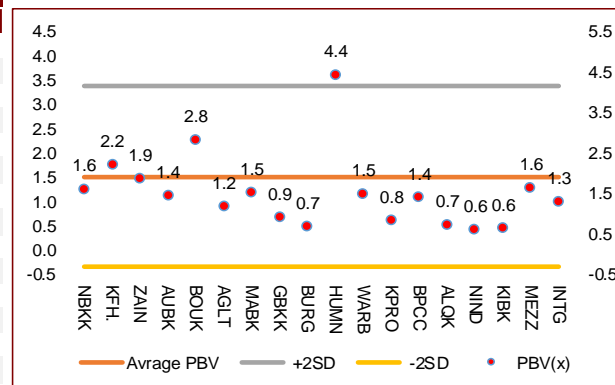
By Price to Earning Value



Kuwait Daily Market Report

NIC Research and Studies Dep

Premier Market	Price			Valuation Multiples			MKT Cap	Price Performance		ROE (%)	ROA (%)
	Company	Close (KD)	Day Δ	Day % Δ	PBV(X)	PE(X)		DY%	MTD(%)		
National Bank of Kuwait SAKP	0.815	0.005	0.62%	1.61	13.8	3.9%	5,537	-1%	-20%	11.7%	1.4%
Kuwait Finance House KSC	0.600	-0.003	-0.50%	2.21	18.2	2.7%	4,562	-2%	-19%	12.2%	1.3%
Mobile Telecommunications Company KSCP	0.563	-0.004	-0.71%	1.88	11.2	5.5%	2,436	2%	-6%	16.7%	8.3%
Ahli United Bank BSC	0.192	0.010	5.49%	1.45	8.5	6.3%	1,853	9%	-35%	17.1%	1.8%
Boubyan Bank KSCP	0.537	0.001	0.19%	2.83	26.0	1.2%	1,626	1%	-12%	10.9%	1.2%
Agility Public Warehousing Co KSCP	0.783	0.016	2.09%	1.18	15.0	2.7%	1,303	7%	-4%	7.9%	6.5%
Mabane Company KPSC	0.654	-0.002	-0.30%	1.52	12.8	1.6%	720	-3%	-23%	11.9%	6.1%
Gulf Bank KSCP	0.209	0.000	0.00%	0.91	9.5	4.8%	606	-1%	-31%	9.6%	1.0%
Burgan Bank KPSC	0.194	0.000	0.00%	0.68	6.0	5.9%	508	-1%	-36%	11.3%	1.2%
Human Soft Holding Company KSCP	2.928	0.028	0.97%	4.43	9.9	6.3%	356	4%	-4%	44.6%	33.0%
Warba Bank KSCP	0.206	-0.001	-0.48%	1.49	19.6	0.0%	324	0%	-21%	7.6%	0.5%
Kuwait Projects Company Holding KSCP	0.157	-0.002	-1.26%	0.84	9.5	5.9%	285	-9%	-27%	8.9%	4.0%
Boubyan Petrochemical Company KSCP	0.620	0.003	0.49%	1.40	26.5	8.3%	313	1%	-7%	5.3%	3.1%
Qurain Petrochemical Industries Company KSC	0.298	0.008	2.76%	0.73	10.8	5.1%	305	8%	-4%	6.7%	6.1%
National Industries Group Holding KPSC	0.162	-0.001	-0.61%	0.61	5.0	6.7%	231	-1%	-33%	12.3%	7.0%
Kuwait International Bank KSCP	0.175	0.001	0.57%	0.64	10.4	5.7%	178	-1%	-33%	6.1%	0.6%
Mezzan Holding Company KSCP	0.571	-0.006	-1.04%	1.65	30.9	2.9%	174	-3%	15%	5.3%	4.0%
Integrated Holding Co KSCC	0.402	-0.003	-0.74%	1.29	11.2	10.0%	88	-5%	-27%	11.5%	9.6%
Total							21,407				



Premier Market	Price			Moving Average		RSI	MKT Cap	Price Performance		52 Week (KD)	
	Discription	Close (KD)	Day Δ	Day % Δ	50 Day			200 Day	14 Day	Mn KD	MTD(%)
Premier Index	5,636	32.220	0.57%	5,417	6,027	66	21,407	0.005	-19.21%	7,172	4,499

Top 5 Performrs (Today's Price Change)

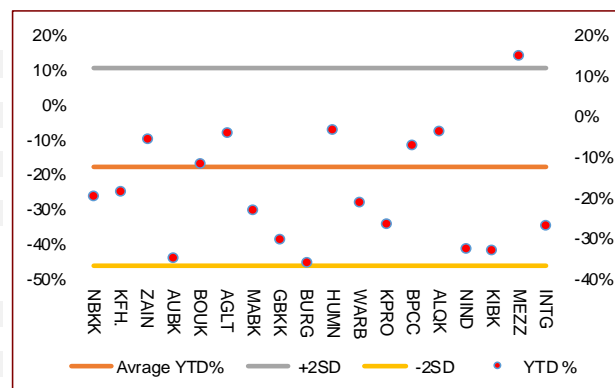
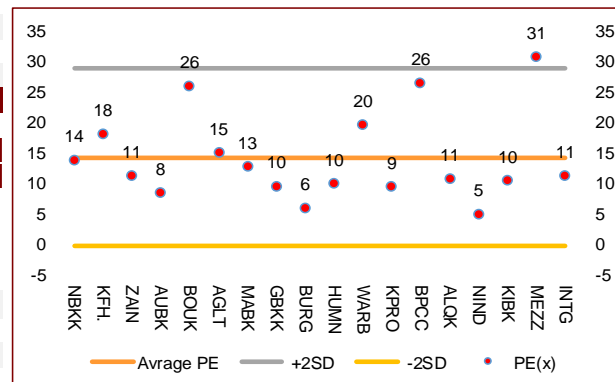
Ahli United Bank BSC	0.192	0.010	5.49%	0.180	0.236	81	1,853	9%	-35%	0.311	0.160
Qurain Petrochemical Industries Company KSC	0.298	0.008	2.76%	0.257	0.274	79	305	8%	-4%	0.360	0.163
Agility Public Warehousing Co KSCP	0.783	0.016	2.09%	0.677	0.709	88	1,303	7%	-4%	0.860	0.410
Human Soft Holding Company KSCP	2.928	0.028	0.97%	2.708	2.912	76	356	4%	-4%	3.490	1.944
National Bank of Kuwait SAKP	0.815	0.005	0.62%	0.778	0.870	60	5,537	-1%	-20%	1.062	0.654

Middel Performrs (Today's Price Change)

Kuwait International Bank KSCP	0.175	0.001	0.57%	0.177	0.226	44	178	-1%	-33%	0.277	0.164
Boubyan Petrochemical Company KSCP	0.620	0.003	0.49%	0.557	0.625	81	313	1%	-7%	0.911	0.395
Boubyan Bank KSCP	0.537	0.001	0.19%	0.507	0.536	82	1,626	1%	-12%	0.638	0.380
Gulf Bank KSCP	0.209	0.000	0.00%	0.215	0.255	42	606	-1%	-31%	0.323	0.180
Burgan Bank KPSC	0.194	0.000	0.00%	0.197	0.260	44	508	-1%	-36%	0.359	0.178
Mabane Company KPSC	0.654	-0.002	-0.30%	0.626	0.705	46	720	-3%	-23%	0.877	0.434
Warba Bank KSCP	0.206	-0.001	-0.48%	0.204	0.230	63	324	0%	-21%	0.279	0.164
Kuwait Finance House KSC	0.600	-0.003	-0.50%	0.602	0.640	51	4,562	-2%	-19%	0.761	0.473

Bottom 5 Performrs (Today's Price Change)

Kuwait Projects Company Holding KSCP	0.157	-0.002	-1.26%	0.169	0.196	22	285	-9%	-27%	0.231	0.152
Mezzan Holding Company KSCP	0.571	-0.006	-1.04%	0.587	0.541	19	174	-3%	15%	0.645	0.428
Integrated Holding Co KSCC	0.402	-0.003	-0.74%	0.405	0.468	28	88	-5%	-27%	0.605	0.360
Mobile Telecommunications Company KSCP	0.563	-0.004	-0.71%	0.540	0.546	51	2,436	2%	-6%	0.604	0.407
National Industries Group Holding KPSC	0.162	-0.001	-0.61%	0.167	0.201	40	231	-1%	-33%	0.261	0.121



Market Sectors

Banking Sector	Price			Valuation Multiples			MKT Cap	Price Performance		Trading Indicators		ROE	ROA	52 Week (KD)	
	Company	Close (KD)	Day Δ	Day % Δ	PBV(X)	PE(X)		DY%	Mn KD	MTD(%)	YTD (%)			Value (Mn KD)	(Mn Shrs)
National Bank of Kuwait SAKP	0.815	0.005	0.62%	1.61	13.80	3.9%	5,537	-1%	-20%	1.35	1.66	11.7%	1.4%	1.062	0.654
Kuwait Finance House KSC	0.600	-0.003	-0.50%	2.21	18.18	2.7%	4,562	-2%	-19%	6.36	10.58	12.2%	1.3%	0.761	0.473
Ahli United Bank BSC	0.192	0.010	5.49%	1.45	8.46	6.3%	1,853	9%	-35%	12.35	65.58	17.1%	1.8%	0.311	0.160
Boubyan Bank KSCP	0.537	0.001	0.19%	2.83	25.96	1.2%	1,626	1%	-12%	0.34	0.64	10.9%	1.2%	0.638	0.380
Commercial Bank of Kuwait KPSC	0.500	0.000	0.00%	1.32	0.00	3.7%	967	0%	-5%	0.00	0.00	0.0%	0.0%	0.569	0.465
Gulf Bank KSCP	0.209	0.000	0.00%	0.91	9.52	4.8%	606	-1%	-31%	1.00	4.82	9.6%	1.0%	0.323	0.180
Burgan Bank KPSC	0.194	0.000	0.00%	0.68	6.00	5.9%	508	-1%	-36%	0.10	0.53	11.3%	1.2%	0.359	0.178
Ahli United Bank KSCP	0.252	0.001	0.40%	1.08	8.93	5.4%	491	0%	-23%	0.01	0.05	12.1%	1.3%	0.348	0.225
Warba Bank KSCP	0.206	-0.001	-0.48%	1.49	19.62	0.0%	324	0%	-21%	0.04	0.21	7.6%	0.5%	0.279	0.164
Al Ahli Bank of Kuwait KSCP	0.176	0.000	0.00%	0.51	9.86	8.0%	283	-1%	-31%	0.03	0.17	5.1%	0.6%	0.345	0.156
Kuwait International Bank KSCP	0.175	0.001	0.57%	0.64	10.41	5.7%	178	-1%	-33%	0.43	2.44	6.1%	0.6%	0.277	0.164
Ithmaar Holding BSC	0.022	0.000	0.00%	0.08	323.35	0.0%	65	0%	0%	0.00	0.00	0.0%	0.0%	0.022	0.022
Total Banking Sector - 12 Companies				1.43	14.17	3.7%	17,001				22.0	86.7			

Basic materials	Price			Valuation Multiples			MKT Cap	Price Performance		Trading Indicators		ROE	ROA	52 Week (KD)	
	Company	Close (KD)	Day Δ	Day % Δ	PBV(X)	PE(X)		DY%	Mn KD	MTD(%)	YTD (%)			Value (Mn KD)	(Mn Shrs)
Boubyan Petrochemical Company KSCP	0.620	0.003	0.49%	1.40	26.5	8.3%	313	1%	-7%	0.45	0.73	5.3%	3.1%	0.911	0.395
Qurain Petrochemical Industries Company KS	0.298	0.008	2.76%	0.73	10.8	5.1%	305	8%	-4%	0.77	2.61	6.7%	6.1%	0.360	0.163
Al Kout Industrial Projects Company KPSC	0.769	0.000	0.00%	2.50	16.2	6.5%	78	-1%	-10%	0.00	0.00	15.4%	13.9%	0.850	0.769
Kuwait Foundry Company KPSC	0.228	-0.011	-4.60%	0.76	18.4	23.4%	16	0%	-32%	0.00	0.00	4.1%	2.3%	0.564	0.192
Total Basic materials - 4 Companies				1.02	15.57	7.1%	712				1.23	3.34			

Consumer goods	Price			Valuation Multiples			MKT Cap	Price Performance		Trading Indicators		ROE	ROA	52 Week (KD)	
	Company	Close (KD)	Day Δ	Day % Δ	PBV(X)	PE(X)		DY%	Mn KD	MTD(%)	YTD (%)			Value (Mn KD)	(Mn Shrs)
Mezzan Holding Company KSCP	0.571	-0.006	-1.04%	1.65	30.9	2.9%	174	-3%	15%	0.06	0.10	5.3%	4.0%	0.645	0.428
Livestock Transport and Trading Co KPSC	0.187	0.003	1.63%	0.97	33.3	0.1%	39	1%	6%	0.05	0.27	2.9%	2.6%	0.200	0.152
Danah Al Safat Foodstuff Co KPSC	0.012	0.000	0.00%	0.25	-0.3	0.1%	1	1%	-25%	0.00	0.00	-84.8%	-88.3%	0.029	0.010
Total Basic materials - 3 Companies				1.42	86.82	2.4%	214				0.11	0.37			

Consumer services	Price			Valuation Multiples			MKT Cap	Price Performance		Trading Indicators		ROE	ROA	52 Week (KD)	
	Company	Close (KD)	Day Δ	Day % Δ	PBV(X)	PE(X)		DY%	Mn KD	MTD(%)	YTD (%)			Value (Mn KD)	(Mn Shrs)
Jazeera Airways Co KSCP	0.646	0.004	0.62%	3.21	8.6	5.4%	129	-4%	-42%	0.07	0.11	37.1%	9.3%	1.110	0.372
Kuwait National Cinema Company KPSC	0.750	0.000	0.00%	0.86	8.1	6.4%	70	0%	-28%	0.00	0.00	10.6%	8.5%	1.050	0.655
Al Soor Fuel Marketing Company KSCP	0.110	-0.001	-0.90%	0.67	12.8	4.5%	44	1%	-11%	0.01	0.13	5.3%	3.9%	0.129	0.096
Oula Fuel Marketing Co KSCP	0.110	-0.002	-1.79%	0.66	11.5	5.4%	45	-1%	-13%	0.00	0.00	5.7%	3.9%	0.134	0.095
Sultan Center Food Products Company KSCP	0.056	0.001	1.82%	0.70	14.1	0.0%	32	2%	8%	0.01	0.15	4.9%	3.8%	0.060	0.036
IFA Hotels and Resorts Co KSCP	0.023	0.000	0.00%	0.83	-0.6	0.0%	14	0%	-56%	0.00	0.05	-131.5%	-4.7%	0.065	0.021
Jiyad Holding Co KSCP	0.032	-0.001	-3.31%	0.29	6.4	0.0%	11	-1%	-18%	0.00	0.15	4.5%	3.7%	0.050	0.029
Kuwait Resorts Company KPSC	0.051	-0.001	-2.30%	0.35	9.2	0.0%	10	-6%	-16%	0.05	0.92	3.8%	3.8%	0.064	0.040
Future Kid Entertainment and Real Estate Co	0.077	0.000	0.13%	0.47	30.3	14.4%	9	0%	-13%	0.00	0.00	1.5%	2.6%	0.110	0.069
Al Eid Food Company KSCP	0.088	0.002	2.33%	0.49	5.9	0.0%	9	2%	11%	0.01	0.12	8.4%	8.4%	0.096	0.046
Alrai Media Group Co KSCP	0.037	0.000	0.00%	0.83	-2.4	0.0%	9	0%	-2%	0.00	0.00	-34.2%	-19.3%	0.049	0.029
Kuwait Hotels Co KPSC	0.093	0.000	0.00%	1.31	-5.4	0.0%	5	0%	-7%	0.00	0.00	-24.4%	-13.2%	0.100	0.086
Palms Agro Production Co KSCP	0.060	0.000	0.00%	0.51	-42.3	16.6%	3	0%	49%	0.00	0.00	-1.2%	0.2%	0.060	0.025
Kuwait Cable Vision Company KPSC	0.014	0.000	0.00%	0.52	-11.6	0.0%	1	0%	0%	0.00	0.00	-4.5%	-3.0%	0.027	0.012
Total Consumer services - 14 Companies				0.88	36.96	4.5%	389				0.15	1.63			

Financial services Company	Price			Valuation Multiples			MKT Cap	Price Performance		Trading Indicators		ROE	ROA	52 Week (KD)	
	Close (KD)	Day Δ	Day % Δ	PBV(X)	PE(X)	DY%	Mn KD	MTD(%)	YTD (%)	Value (Mn KD)	(Mn Shrs)	(%)	(%)	High	Low
Egypt Kuwait Holding Co SAE	0.375	0.000	0.00%	2.22	12.7	5.2%	384	0%	-17%	0.00	0.00	17.6%	12.6%	0.500	0.318
Kuwait Projects Company Holding KSCP	0.157	-0.002	-1.26%	0.84	9.5	5.9%	285	-9%	-27%	0.12	0.75	8.9%	4.0%	0.231	0.152
National Industries Group Holding KPSC	0.162	-0.001	-0.61%	0.61	5.0	6.7%	231	-1%	-33%	0.43	2.64	12.3%	7.0%	0.261	0.121
GFH Financial Group BSC	0.046	0.000	0.00%	0.55	6.8	5.7%	170	-3%	-33%	0.01	0.20	8.0%	1.1%	0.078	0.042
Alimtiyah Investment Group Co KSCP	0.093	0.001	0.97%	0.46	5.1	8.2%	100	2%	-26%	0.21	2.30	9.1%	6.1%	0.147	0.071
Commercial Facilities Co SAKP	0.186	-0.003	-1.59%	0.58	7.2	9.0%	94	-5%	-14%	0.01	0.07	8.0%	4.4%	0.235	0.179
National Investments Co KSCP	0.107	0.005	4.90%	0.47	8.0	7.6%	85	4%	-23%	0.41	3.85	5.9%	5.7%	0.155	0.080
Tamdeen Investment Co KSCP	0.235	-0.004	-1.67%	0.29	9.7	5.1%	80	5%	-28%	0.00	0.00	3.0%	3.3%	0.400	0.222
Kuwait Investment Company KPSC	0.110	0.003	2.80%	0.48	3.4	9.2%	60	3%	-27%	0.23	2.10	13.9%	7.8%	0.172	0.095
Noor Financial Investment Co KPSC	0.157	0.024	18.05%	0.98	7.8	3.1%	63	11%	29%	0.54	3.75	12.5%	10.1%	0.184	0.076
Al Bareeq Holding KSCP	0.106	0.000	0.00%	1.11	21.2	0.0%	46	0%	6%	0.00	0.00	5.2%	5.1%	0.110	0.100
Kuwait Financial Centre KPSC	0.078	0.000	0.00%	0.39	5.4	6.3%	37	0%	-26%	0.00	0.00	7.3%	5.1%	0.121	0.075
Aayan Leasing and Investment Co KSCP	0.045	-0.001	-1.32%	0.52	-2.5	4.0%	36	0%	-4%	0.12	2.73	-21.4%	-4.4%	0.066	0.032
Arabi Group Holdings KSCP	0.198	0.000	0.00%	1.07	-19.9	0.0%	33	0%	-28%	0.00	0.00	-5.4%	3.6%	0.337	0.073
Arzan Financial Group for Financing and Invest	0.042	0.001	2.22%	0.34	30.2	0.0%	33	9%	75%	0.35	8.48	1.1%	2.3%	0.047	0.022
Privatization Holding Co KPSC	0.041	-0.001	-3.05%	0.30	-37.2	0.0%	25	-4%	-18%	0.00	0.02	-0.8%	0.8%	0.059	0.037
Asiya Capital Investments Company KSCP	0.032	0.001	1.94%	0.34	16.2	0.2%	24	-6%	-23%	0.00	0.00	2.1%	2.1%	0.041	0.029
KAMCO Investment Co KSCP	0.075	0.000	0.13%	0.45	8.4	0.0%	26	-5%	-18%	0.01	0.08	5.4%	5.9%	0.111	0.060
Kuwait and Middle East Financial Investment (0.095	0.000	0.00%	1.54	37.9	0.0%	25	6%	6%	0.04	0.45	4.1%	4.3%	0.108	0.041
Umm Al Qaiwain General Investment Co PSC	0.067	0.000	0.00%	0.45	12.5	5.5%	24	0%	0%	0.00	0.00	3.6%	3.3%	0.087	0.052
Securities House KSCP	0.042	0.001	1.45%	0.57	-61.4	0.0%	23	5%	-7%	0.30	7.10	-0.9%	1.4%	0.052	0.027
Gulf Investment House KSCP	0.049	0.001	2.08%	0.55	90.6	0.0%	20	-8%	-24%	0.00	0.07	0.6%	0.5%	0.078	0.038
Coast Investment and Development Co KSCP	0.034	-0.002	-4.79%	0.36	33.7	0.0%	20	4%	-15%	0.03	0.87	1.1%	1.1%	0.045	0.026
Bayan Investment Co KSCP	0.050	0.000	0.00%	0.50	-25.8	0.0%	18	0%	31%	0.00	0.00	-1.9%	-0.9%	0.053	0.031
First Investment Co KSCP	0.027	-0.001	-1.85%	0.41	-0.4	0.0%	17	-2%	-23%	0.32	12.07	-113.6%	63.0%	0.045	0.024
Al Madar Finance and Investment Co KSCP	0.080	0.004	4.58%	0.73	11.9	0.0%	17	0%	-14%	0.00	0.00	6.1%	3.0%	0.148	0.062
Invost BSC Public	0.058	0.000	0.00%	0.41	7.9	10.1%	17	7%	-9%	0.00	0.00	5.2%	2.7%	0.071	0.044
Al Manar Financing and Leasing Co KSCC	0.049	-0.001	-2.22%	0.44	12.5	1.1%	15	-10%	-6%	0.00	0.00	3.5%	2.8%	0.060	0.037
Osoul Investment Co KSCP	0.085	-0.001	-0.93%	0.61	6.8	0.0%	12	-20%	12%	0.03	0.30	9.0%	8.7%	0.121	0.057
National International Holding Co KSCP	0.069	0.003	5.04%	0.34	7.9	4.5%	14	0%	-11%	0.00	0.00	4.4%	4.7%	0.085	0.051
Kuwait Finance and Investment Company KSC	0.042	0.000	0.00%	0.33	18.6	0.0%	13	-3%	-16%	0.00	0.05	1.8%	2.3%	0.058	0.037
Manazel Holding Co KPSC	0.030	0.000	-0.99%	0.66	19.3	0.0%	13	2%	-23%	0.05	1.56	3.4%	1.2%	0.048	0.021
Amar Finance and Leasing Company KSCP	0.052	0.000	0.00%	0.59	43.8	0.0%	10	0%	38%	0.00	0.00	1.3%	1.3%	0.066	0.025
UniCap Investment and Finance Co KSCP	0.038	0.000	0.00%	0.38	-19.0	0.0%	9	-3%	-31%	0.01	0.18	-2.0%	0.3%	0.057	0.035
Al Aman Investment Company KPSC	0.057	0.000	0.00%	0.00	0.0	0.0%	9	0%	-4%	0.00	0.00	0.0%	0.0%	0.062	0.050
Gulf North Africa Holding Co KPSC	0.054	0.000	0.00%	0.72	70.1	0.0%	8	-1%	-12%	0.00	0.00	1.0%	2.5%	0.062	0.052
International Financial Advisors KPSC	0.031	0.000	1.29%	0.95	-0.4	2.0%	8	-1%	-44%	0.00	0.02	-222.8%	-17.0%	0.068	0.027
Kuwait Syrian Holding Co KSCP	0.041	0.000	0.00%	0.35	-21.1	0.0%	7	-5%	31%	0.00	0.00	-1.7%	-1.1%	0.044	0.022
Amwal International Investment Company KSC	0.038	0.000	0.00%	0.71	14.0	0.0%	7	0%	27%	0.00	0.00	5.0%	6.3%	0.056	0.030
Al Salam Group Holding Co KSCP	0.023	0.000	-0.86%	0.20	173.6	0.0%	6	-2%	-23%	0.04	1.93	0.1%	0.1%	0.043	0.018
Warba Capital Holding Co KSC	0.056	0.000	0.00%	0.62	-8.9	0.0%	6	-3%	-13%	0.00	0.00	-7.0%	-5.0%	0.120	0.045
Credit Rating and Collection Company KSCP	0.035	0.000	0.00%	1.08	-23.7	0.0%	6	10%	76%	0.00	0.00	-4.6%	-4.3%	0.037	0.015
National Consumer Holding Company KSCP	0.055	0.000	0.00%	0.61	269.6	0.0%	5	0%	0%	0.00	0.00	0.2%	0.3%	0.100	0.010
Al Madina for Finance and Investment Co KSC	0.011	-0.001	-4.35%	0.37	-2.1	0.0%	4	-8%	-27%	0.03	3.18	-17.9%	-7.7%	0.019	0.009
Ektitab Holding Co KSCP	0.014	-0.001	-5.30%	0.34	-10.1	0.0%	5	9%	-2%	0.06	4.27	-3.4%	-3.0%	0.019	0.010
Kuwait Bahrain International Exchange Compa	0.086	0.000	0.00%	0.00	0.0	0.0%	4	0%	0%	0.00	0.00	0.0%	0.0%	0.086	0.086
Al Deera Holding Co KPSC	0.017	-0.001	-4.95%	0.75	-9.7	0.0%	3	-6%	-13%	0.00	0.14	-7.7%	-2.2%	0.022	0.010
Al Mal Investment Company KPSC	0.009	0.000	0.00%	0.41	-0.9	0.0%	3	-2%	-6%	0.04	3.99	-47.6%	-23.1%	0.016	0.008
Gulf Franchising Holding Co KSCP	0.068	0.000	0.00%	1.07	-2.9	0.0%	3	0%	-9%	0.00	0.00	-36.2%	-10.8%	0.179	0.001
Tamkeen Holding KSCC	0.005	0.000	0.00%	0.05	-7.2	0.0%	0	0%	0%	0.00	0.00	-0.7%	-0.7%	0.007	0.004
Total Financial services - 50 Companies				0.62	14.95	4.8%	2,165			3.39	63.15				

Health care	Price			Valuation Multiples			MKT Cap	Price Performance		Trading Indicators		ROE	ROA	52 Week (KD)		
	Company	Close (KD)	Day Δ	Day % Δ	PBV(X)	PE(X)		DY%	Mn KD	MTD(%)	YTD (%)			Value (Mn KD)	(Mn Shrs)	(%)
Al-Maidan Clinic for Oral Health Services Com	1.220	0.000	0.00%	7.90	47.8	0.6%	305	0%	0%	0.00	0.00	16.5%	11.6%	1.240	1.220	
Advanced Technology Co KSCP	0.660	0.000	0.00%	1.72	53.7	2.3%	99	10%	-19%	0.00	0.00	3.2%	3.5%	1.000	0.580	
Yiaco Medical Company KPSC	0.707	0.000	0.00%	6.06	52.7	0.0%	12	0%	0%	0.00	0.00	11.5%	3.1%	0.707	0.707	
Total Health care - 3 Companies				4.24	49.21	1.0%	416				0.00	0.00				

Industrials	Price			Valuation Multiples			MKT Cap	Price Performance		Trading Indicators		ROE	ROA	52 Week (KD)		
	Company	Close (KD)	Day Δ	Day % Δ	PBV(X)	PE(X)		DY%	Mn KD	MTD(%)	YTD (%)			Value (Mn KD)	(Mn Shrs)	(%)
Agility Public Warehousing Co KSCP	0.783	0.016	2.09%	1.18	15.0	2.7%	1,303	7%	-4%	6.67	8.59	7.9%	6.5%	0.860	0.410	
Human Soft Holding Company KSCP	2.928	0.028	0.97%	4.43	9.9	6.3%	356	4%	-4%	0.11	0.04	44.6%	33.0%	3.490	1.944	
ALAFCO Aviation Lease and Finance Compan	0.170	0.001	0.59%	0.51	9.1	5.9%	162	2%	-37%	0.22	1.30	5.5%	3.7%	0.305	0.138	
Kuwait Cement Co KSCP	0.174	-0.001	-0.57%	0.59	30.9	8.5%	124	-6%	-29%	0.04	0.22	1.9%	2.3%	0.294	0.144	
Gulf Cable and Electrical Industries Co KPSC	0.582	0.017	3.01%	0.70	28.9	4.7%	122	4%	19%	0.61	1.06	2.4%	2.7%	0.594	0.390	
Integrated Holding Co KSCC	0.402	-0.003	-0.74%	1.29	11.2	10.0%	88	-5%	-27%	0.11	0.28	11.5%	9.6%	0.605	0.360	
Kuwait Portland Cement Co KPSC	0.820	-0.007	-0.85%	1.10	10.8	12.0%	82	5%	-16%	0.01	0.01	10.2%	8.8%	1.230	0.685	
United Projects for Aviation Services Co KSCP	0.465	0.000	0.00%	0.98	8.0	4.5%	74	0%	-9%	0.00	0.00	12.3%	9.1%	0.512	0.367	
Heavy Engineering Industries and Shipbuilding	0.356	0.002	0.56%	1.03	5.7	8.2%	64	-12%	-12%	0.07	0.19	18.0%	7.1%	0.423	0.298	
Educational Holding Group KSCP	0.310	0.010	3.33%	1.79	9.8	4.8%	76	5%	-29%	0.00	0.00	18.3%	17.8%	0.475	0.228	
National Industries Company KPSC	0.152	-0.008	-5.00%	0.65	12.7	6.3%	54	0%	-8%	0.00	0.02	5.1%	7.8%	0.185	0.143	
ACICO Industries Company KSCP	0.105	-0.001	-0.94%	0.34	13.7	4.7%	35	-4%	-21%	0.00	0.03	2.5%	2.8%	0.159	0.081	
Kuwait Company for Process Plant Constructi	0.364	0.004	1.11%	1.31	7.1	5.4%	35	8%	39%	0.28	0.76	18.5%	8.4%	0.371	0.189	
Ras Al Khaimah for White Cement and Constr	0.065	0.000	0.00%	0.51	19.9	8.4%	33	0%	0%	0.00	0.00	2.6%	4.7%	0.080	0.053	
Gulf Cement Co PSC	0.038	0.000	0.00%	0.38	-13.8	11.0%	31	0%	-31%	0.00	0.00	-2.7%	-2.0%	0.063	0.032	
Combined Group Contracting Company KSCP	0.180	-0.002	-1.10%	0.63	8.1	11.4%	29	-2%	-31%	0.09	0.52	7.7%	3.0%	0.264	0.150	
Sharjah Cement and Industrial Development Co	0.042	0.000	0.00%	0.21	25.3	12.4%	26	0%	0%	0.00	0.00	0.8%	1.2%	0.068	0.042	
KGL Logistics Company KPSC	0.028	0.000	0.36%	0.21	4.6	0.1%	21	1%	-25%	0.01	0.28	4.6%	3.7%	0.043	0.024	
Fujairah Cement Industries Co PSC	0.041	0.000	0.00%	0.17	19.6	10.4%	14	1%	-10%	0.00	0.00	0.8%	2.3%	0.057	0.035	
Shuaiba Industrial Company KPSC	0.134	0.000	0.00%	0.75	41.6	7.4%	13	-4%	-14%	0.00	0.00	1.8%	2.0%	0.180	0.122	
Kuwait and Gulf Link Transport Company KPS	0.048	0.001	1.47%	0.20	14.6	0.0%	13	1%	-27%	0.02	0.45	1.4%	2.2%	0.084	0.042	
National Cleaning Co KSCP	0.054	0.001	2.65%	0.35	7.9	8.6%	13	-4%	-23%	0.00	0.00	4.4%	2.3%	0.088	0.047	
Mubarrad Holding Co KSCP	0.062	-0.001	-1.58%	0.49	10.0	7.5%	10	-3%	-29%	0.09	1.37	4.9%	5.1%	0.089	0.049	
Specialities Group Holding Company KPSC	0.065	-0.001	-1.06%	0.32	7.0	0.0%	9	-3%	-23%	0.05	0.78	4.5%	7.1%	0.086	0.055	
Hilal Cement Company KSCP	0.075	0.000	0.00%	0.65	-6.2	20.0%	8	0%	-25%	0.00	0.00	-10.6%	-5.3%	0.118	0.063	
National Ranges Co KPSC	0.017	0.001	5.63%	0.31	-1.2	0.0%	5	9%	69%	0.01	0.71	-24.9%	-4.2%	0.017	0.007	
Metal and Recycling Co KSCP	0.043	-0.005	-9.58%	0.36	-1.8	0.0%	4	-10%	-13%	0.00	0.02	-19.7%	-7.2%	0.070	0.020	
Salbookh Trading Co KSCP	0.032	0.000	0.00%	0.44	-1.9	0.0%	3	3%	-36%	0.00	0.00	-23.2%	-15.3%	0.051	0.026	
Equipment Holding Co KSCP	0.014	0.000	0.00%	0.27	-155.9	0.0%	2	0%	-38%	0.00	0.00	-0.2%	0.4%	0.024	0.013	
Total Health care - 29 Companies				0.89	13.40	5.0%	2,811				8.39	16.62				

Insurance	Price			Valuation Multiples			MKT Cap	Price Performance		Trading Indicators		ROE	ROA	52 Week (KD)		
	Company	Close (KD)	Day Δ	Day % Δ	PBV(X)	PE(X)		DY%	Mn KD	MTD(%)	YTD (%)			Value (Mn KD)	(Mn Shrs)	(%)
Gulf Insurance Group KSCP	0.585	-0.030	-4.88%	0.96	7.8	6.6%	105	-5%	-11%	0.01	0.01	12.3%	3.0%	0.687	0.585	
Al Ahleia Insurance Co SAKP	0.410	0.000	0.00%	0.74	7.9	8.6%	81	0%	-4%	0.00	0.00	9.4%	3.7%	0.445	0.385	
Kuwait Insurance Company SAKP	0.340	0.000	0.00%	0.56	6.6	7.0%	63	5%	3%	0.00	0.00	8.5%	4.9%	0.387	0.298	
Kuwait Reinsurance Company KSCP	0.188	0.000	0.00%	0.71	8.0	2.3%	38	0%	36%	0.00	0.00	8.9%	3.4%	0.188	0.121	
Bahrain Kuwait Insurance Co BSC	0.200	0.000	0.00%	0.93	12.9	6.1%	28	0%	0%	0.00	0.00	7.2%	0.9%	0.200	0.200	
Warba Insurance Company KSCP	0.081	0.000	0.00%	0.34	11.2	0.0%	13	6%	30%	0.00	0.00	3.1%	1.0%	0.096	0.053	
First Takaful Insurance Co KPSC	0.042	-0.001	-2.33%	0.51	5.3	0.0%	4	7%	10%	0.00	0.00	9.6%	6.3%	0.056	0.031	
Wethaq Takaful Insurance Co KCSP	0.023	0.000	0.00%	0.21	-28.9	0.0%	3	-4%	-8%	0.01	0.59	-0.7%	-0.7%	0.033	0.018	
Total Insurance - 8 Companies				0.71	7.97	6.2%	335				0.02	0.60				

Oil and Gas	Price			Valuation Multiples			MKT Cap	Price Performance		Trading Indicators		ROE	ROA	52 Week (KD)		
	Company	Close (KD)	Day Δ	Day % Δ	PBV(X)	PE(X)		DY%	Mn KD	MTD(%)	YTD (%)			Value (Mn KD)	(Mn Shrs)	(%)
Burgan for Well Drilling Trading and Maintenanc	0.070	0.000	0.00%	0.25	7.1	0.0%	16	0%	-13%	0.00	0.00	3.6%	3.2%	0.099	0.062	
Energy House Holding Company KSCP	0.024	0.001	3.52%	0.73	-3.2	0.0%	18	-7%	1%	0.02	0.84	-22.5%	-15.6%	0.036	0.014	
Gulf Petroleum Investment Company KSCP	0.016	0.000	-2.52%	0.17	-5.0	0.0%	7	-2%	-22%	0.01	0.78	-3.4%	-2.2%	0.025	0.012	
Independent Petroleum Group KSCP	0.380	0.000	0.00%	0.70	10.4	7.9%	69	0%	-21%	0.00	0.00	6.8%	2.2%	0.497	0.375	
National Petroleum Services Company KSCP	1.129	0.000	0.00%	2.69	9.6	6.2%	110	4%	-4%	0.00	0.00	27.9%	25.2%	1.389	0.903	
Senergy Holding Company KSCP	0.019	0.000	2.19%	0.38	-0.8	0.0%	4	4%	-15%	0.00	0.00	-47.9%	-28.9%	0.027	0.014	
Total Oil and Gas - 6 Companies				0.80	25.85	5.5%	223				0.03	1.62				

Real estate	Price			Valuation Multiples			MKT Cap	Price Performance		Trading Indicators		ROE	ROA	52 Week (KD)		
	Company	Close (KD)	Day Δ	Day % Δ	PBV(X)	PE(X)		DY%	Mn KD	MTD(%)	YTD (%)			Value (Mn KD)	(Mn Shrs)	(%)
Mabane Company KPSC	0.654	-0.002	-0.30%	1.52	12.8	1.6%	720	-3%	-23%	0.17	0.26	11.9%	6.1%	0.877	0.434	
Salhia Real Estate Co KSCP	0.420	0.007	1.69%	1.27	9.7	4.7%	208	8%	0%	0.13	0.30	13.2%	6.2%	0.460	0.324	
Commercial Real Estate Co KPSC	0.098	0.000	0.00%	0.58	11.8	6.0%	172	2%	4%	0.00	0.00	5.0%	3.8%	0.106	0.085	
Tamdeen Real Estate Co KPSC	0.260	0.002	0.78%	0.39	13.2	3.7%	109	-1%	-19%	0.01	0.02	3.0%	2.3%	0.350	0.248	
National Real Estate Co KSCP	0.075	0.001	1.49%	0.39	9.4	0.0%	108	0%	-18%	0.12	1.61	4.2%	2.3%	0.095	0.060	
Kuwait Real Estate Company KPSC	0.085	0.001	1.68%	0.57	10.4	0.5%	73	5%	-19%	0.03	0.31	5.5%	5.9%	0.115	0.070	
United Real Estate Company SAKP	0.050	-0.002	-3.85%	0.29	-7.4	0.0%	54	2%	-18%	0.00	0.02	-3.9%	1.4%	0.066	0.049	
First Dubai for Real Estate Development Co K	0.036	0.000	0.56%	0.49	39.7	1.1%	36	-1%	2%	0.00	0.09	1.2%	2.1%	0.055	0.026	
Al Mazaya Holding Company KSCP	0.052	0.000	0.00%	0.40	-3.7	0.1%	32	-1%	-13%	0.00	0.00	-11.0%	-0.9%	0.067	0.047	
Dar Al Thuraya Real Estate Co KPSC	0.151	0.000	0.00%	1.43	39.8	0.0%	22	6%	115%	0.00	0.00	3.6%	-1.2%	0.190	0.040	
Injazat Real Estate Development Company K	0.080	0.000	0.00%	0.51	-3.8	8.6%	27	4%	0%	0.00	0.00	-13.4%	-6.9%	0.091	0.061	
Ajjal Real Estate Entertainment Co KSCP	0.137	0.001	0.74%	0.20	12.6	0.0%	25	3%	-24%	0.00	0.00	1.6%	1.9%	0.224	0.121	
Arkan Al Kuwait Real Estate Company KSCP	0.090	0.000	0.00%	0.64	9.8	8.7%	23	-6%	1%	0.00	0.00	6.6%	7.1%	0.100	0.076	
Al Argan International Real Estate Co KSCP	0.085	0.000	0.00%	0.25	27.6	5.7%	22	-1%	-19%	0.00	0.00	0.9%	2.8%	0.176	0.060	
Al-Enmaa Real Estate Company KSCP	0.043	-0.003	-6.29%	0.43	11.4	0.0%	19	-6%	-30%	0.00	0.10	3.8%	2.5%	0.079	0.040	
Aayan Real Estate Company KSCP	0.053	0.001	1.92%	0.30	9.9	9.5%	21	0%	-27%	0.00	0.00	3.0%	2.8%	0.080	0.051	
Dalqan Real Estate Company KSCP	0.350	0.000	0.00%	2.91	59.0	0.0%	19	0%	0%	0.00	0.00	4.9%	5.1%	0.350	0.350	
Kuwait Business Town Real Estate Co KSCP	0.029	0.000	-0.35%	0.26	7.4	0.3%	18	0%	-34%	0.02	0.59	3.6%	2.8%	0.046	0.027	
Tijara and Realestate Investment Company KS	0.050	0.000	0.00%	0.47	13.1	4.0%	18	0%	0%	0.00	0.00	3.6%	5.0%	0.055	0.034	
Munshaat Real Estate Projects Co KSCP	0.050	0.000	0.00%	0.34	18.4	4.2%	16	-4%	-32%	0.00	0.00	1.8%	-1.2%	0.086	0.047	
Aqar Real Estate Investments Co KSCP	0.077	0.000	0.00%	0.56	6.4	6.4%	16	0%	-4%	0.00	0.00	8.7%	9.3%	0.089	0.062	
Sokouk Holding Co KSCP	0.025	0.000	-0.39%	0.31	-4.2	0.0%	15	1%	-28%	0.00	0.17	-7.4%	4.1%	0.040	0.022	
Al-Arabiya Real Estate Co KSCP	0.024	0.000	-0.41%	0.21	7.4	2.6%	12	3%	-18%	0.01	0.55	2.9%	12.0%	0.033	0.020	
Mashaer Holding Co KSCP	0.063	0.000	0.00%	0.48	6.8	0.0%	11	-2%	-19%	0.00	0.00	7.1%	5.5%	0.086	0.048	
Osos Holding Group Co KSCP	0.097	-0.001	-0.51%	0.77	7.3	9.8%	10	2%	-3%	0.00	0.00	10.5%	7.3%	0.118	0.089	
Abyaar Real Estate Development Company K	0.007	0.000	-3.95%	0.21	-0.5	0.0%	8	-6%	-5%	0.03	4.60	-40.9%	-12.3%	0.016	0.005	
Ream Real Estate Company KSCP	0.107	0.018	19.96%	0.82	-4.3	2.1%	12	28%	22%	0.00	0.01	-19.0%	-10.1%	0.146	0.060	
Investors Holding Group Company KSCP	0.013	0.000	-2.22%	0.67	-0.6	0.0%	8	-1%	65%	0.05	3.80	-106.5%	0.0%	0.017	0.007	
Al Massaleh Real Estate Co KSCP	0.029	-0.001	-1.68%	0.33	-4.0	0.0%	7	-10%	-27%	0.01	0.27	-8.1%	-2.3%	0.040	0.027	
Kuwait Real Estate Holding Co KPSC	0.029	-0.001	-4.36%	0.04	0.8	6.2%	5	0%	-1%	0.00	0.02	5.5%	2.3%	0.034	0.023	
Kuwait Remal Real Estate Co KPSC	0.017	0.000	0.00%	0.25	-2.3	0.0%	5	0%	-32%	0.00	0.00	-11.0%	3.1%	0.033	0.013	
Real Estate Trade Centers Company KPSC	0.034	-0.002	-5.00%	0.19	196.5	0.0%	4	3%	47%	0.00	0.01	0.1%	0.1%	0.050	0.018	
Taameer Real Estate Investment Co KSCP	0.019	0.000	1.58%	0.30	-4.2	0.0%	5	0%	-27%	0.01	0.37	-7.0%	-5.4%	0.034	0.013	
Al Masaken International Real Estate Develop	0.037	0.000	0.00%	0.40	44.2	0.5%	4	0%	-17%	0.00	0.00	0.9%	1.2%	0.074	0.027	
Mena Real Estate Co KSCP	0.026	0.000	1.15%	0.18	-58.6	0.0%	4	-1%	-36%	0.00	0.00	-0.3%	-0.1%	0.043	0.021	
Sanam Real Estate Company KSCP	0.029	0.000	0.00%	0.36	38.6	0.0%	3	-5%	-29%	0.00	0.00	0.9%	0.9%	0.045	0.027	
Ajwan Gulf Real Estate Co KSCP	0.012	0.000	3.54%	0.21	-8.4	0.0%	2	4%	-22%	0.13	10.84	-2.5%	-2.2%	0.016	0.009	
Effect Real Estate Company KPSC	0.021	0.000	0.00%	0.29	-8.9	4.9%	2	0%	0%	0.00	0.00	-3.3%	-0.6%	0.026	0.020	
Al Mudon International Real Estate Co KSCP	0.016	0.000	0.00%	0.12	-8.2	0.0%	2	0%	-35%	0.00	0.00	-1.5%	0.0%	0.029	0.015	
Total Real estate - 39 Companies				0.61	21.99	2.6%	1,878				0.72	23.97				

Technology	Price			Valuation Multiples			MKT Cap	Price Performance		Trading Indicators		ROE	ROA	52 Week (KD)	
	Close (KD)	Day Δ	Day % Δ	PBV(X)	PE(X)	DY%		Mn KD	MTD(%)	YTD (%)	Value (Mn KD)			(Mn Shrs)	(%)
Automated Systems Company KPSC	0.068	0.000	0.00%	0.53	(65.96)	5.9%	7	0%	-4%	0.00	0.00	-0.81%	-0.73%	0.086	0.051
Total Technology - 1 Companies				0.53	(65.96)	5.9%	7			0.00	0.00				

Telecom	Price			Valuation Multiples			MKT Cap	Price Performance		Trading Indicators		ROE	ROA	52 Week (KD)	
	Close (KD)	Day Δ	Day % Δ	PBV(X)	PE(X)	DY%		Mn KD	MTD(%)	YTD (%)	Value (Mn KD)			(Mn Shrs)	(%)
Mobile Telecommunications Company KSCP	0.563	-0.004	-0.71%	1.88	11.23	5.5%	2,436	2%	-6%	1.649	2.92	16.70%	8.33%	0.604	0.407
Kuwait Telecommunications Company KSCP	0.865	0.005	0.58%	2.01	9.91	4.0%	432	1%	10%	0.000	0.00	20.25%	12.02%	0.870	0.680
National Mobile Telecommunications Co KSCF	0.659	-0.009	-1.35%	0.58	10.96	9.8%	330	-2%	-21%	0.017	0.03	5.27%	5.12%	0.835	0.560
AAN Digital Services Co KSCP	0.011	-0.001	-5.36%	0.32	34.87	0.0%	9	-8%	-21%	0.154	14.49	0.91%	1.01%	0.021	0.009
Hayat Communications Co KSCP	0.045	0.000	0.00%	0.38	18.94	0.0%	4	0%	-40%	-	-	2.01%	2.74%	0.098	0.025
Telecom - 5 Companies				1.51	11.03	5.7%	3,212			1.8	17.4				

Total Market 174 Companies							29,363		-18%	37.9	215.4	7.94%	1.41%		
-----------------------------------	--	--	--	--	--	--	---------------	--	-------------	-------------	--------------	--------------	--------------	--	--

End of Report

The information contained in this document is proprietary to NIC and is for use only by the persons to whom it is issued.

This document is confidential and may not be distributed either in part or in whole without the express agreement of NIC. It is intended solely for the use of the individual or entity to whom it is addressed and others authorized to receive it.



شركة الاستثمار الوطنية
NATIONAL INVESTMENTS COMPANY

Sharq, Al Mutanabi Street, Khaleejia Tower | P.O. Box 25667, Safat 13117, Kuwait

T.: +965 2226 6666 | Fax: +965 2226 6793 | www.nic.com.kw