



شركة الاستثمارات الوطنية
NATIONAL INVESTMENTS COMPANY

Bursa Kuwait – Daily Market Report
MENA Securities – Research & Studies Dep.
Sunday, July 26, 2020

DAILY MARKET COVERAGE REPORT

NIC MENA SECURITIES - RESEARCH AND STUDIES DEP



| Index | Close | DTD Chg Net | DTD (%) | YTD (%) | 52W High | 52W Low | MKT CAP Bn (KD) | PBV (X) | PE (X) | DY (%) |
|-----------------|----------|----------------|------------|------------|-------------|------------|--------------------|------------|-----------|-----------|
| All Share Index | 4,862.09 | -12.52 | -0.26% | -22.6% | 6,416.43 | 4,339.58 | 27.68 | 1.07 | 13.51 | 4.40% |
| Premier Index | 5,263.17 | -16.28 | -0.31% | -24.5% | 7,172.32 | 4,498.65 | 19.99 | 1.45 | 12.17 | 4.18% |
| Main Index | 4,071.98 | -5.00 | -0.12% | -17.1% | 4,932.47 | 3,965.63 | 7.69 | 0.64 | 18.90 | 4.96% |

| Index | Value Mn(KD) | Volume (Mn share) |
|-----------------|-----------------|----------------------|
| All Share Index | 9.97 | 37.09 |
| Premier Index | 8.82 | 19.56 |
| Main Index | 1.15 | 17.53 |

| Market Breadth | UP | Down | No Chg |
|-----------------|----|------|--------|
| All Share Index | 34 | 44 | 94 |
| Premier Index | 7 | 8 | 3 |
| Main Index | 27 | 36 | 91 |

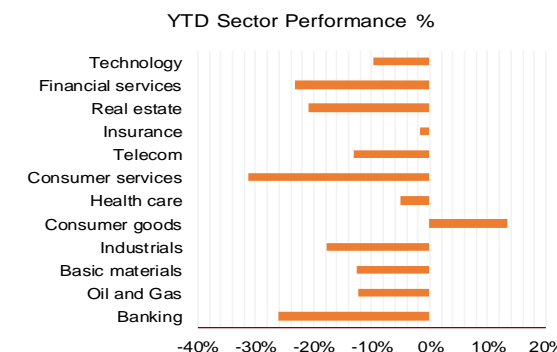
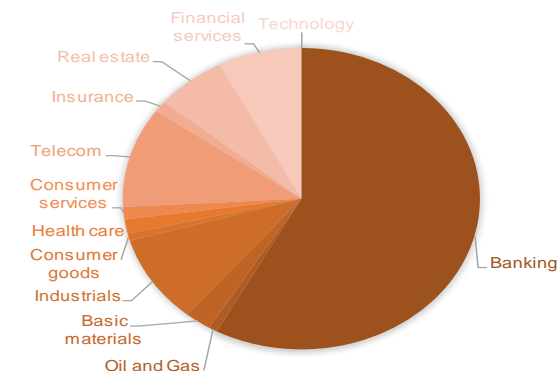
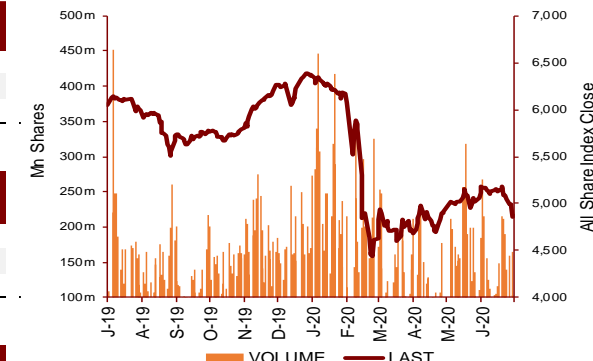
| Today's Top 5 Gainer % | Close KD | Value KD | DTD (%) |
|---------------------------------|-------------|-------------|------------|
| First Takaful Insurance Co KPSC | 0.041 | 1 | 9.92% |
| ACICO Industries Company KSCP | 0.105 | 2,863 | 8.14% |
| Fujairah Cement Industries Co | 0.036 | 3,416 | 7.21% |
| Kuwait Finance and Investment | 0.044 | 310 | 7.07% |
| Osoul Investment Co KSCP | 0.086 | 2,103 | 4.88% |

| Today's Top 5 Loser % | Close KD | Value KD | DTD (%) |
|-----------------------|-------------|-------------|------------|
| Salbookh Trading Co | 0.027 | 2,935 | -11.33% |
| Energy House Holding | 0.020 | 1,009 | -6.67% |
| IFA Hotels and Resor | 0.021 | 922 | -6.55% |
| National Ranges Co K | 0.015 | 5,480 | -6.25% |
| Al Massaleh Real Est | 0.030 | 1,469 | -5.31% |

| Today's Top 5 by Value | Close KD | DTD Chg | Trade Val Mn(KD) |
|--------------------------------|-------------|------------|---------------------|
| National Bank of Kuwait SAKP | 0.747 | -1.45% | 2.61 |
| Agility Public Warehousing Co | 0.723 | 0.42% | 1.56 |
| Kuwait Finance House KSC | 0.568 | 0.00% | 1.38 |
| Mabane Company KPSC | 0.579 | 2.30% | 0.93 |
| Mobile Telecommunications Comp | 0.522 | -0.19% | 0.56 |

| Today's Top 5 by Volume | Close KD | DTD Chg | Trade Vol Mn(Shrs) |
|-------------------------|-------------|------------|-----------------------|
| National Bank of Kuw | 0.747 | -1.45% | 3.48 |
| Kuwait Finance House | 0.568 | 0.00% | 2.43 |
| Agility Public Wareh | 0.723 | 0.42% | 2.15 |
| Aayan Leasing and In | 0.042 | 3.97% | 1.94 |
| Burgan Bank KPSC | 0.178 | 1.71% | 1.79 |

| Sector | Close | DTD Chg Net | DTD (%) | YTD (%) | 52W High | 52W Low | MKT CAP Bn (KD) | PBV (X) | PE (X) | DY (%) |
|--------------------|----------|----------------|------------|------------|-------------|------------|--------------------|------------|-----------|-----------|
| Banking | 1,094.47 | -4.010 | -0.37% | -26.2% | 1,536.8 | 986.4 | 16.02 | 1.35 | 13.35 | 3.9% |
| Oil and Gas | 1,085.12 | -5.900 | -0.54% | -12.4% | 1,372.2 | 985.7 | 0.22 | 0.79 | 25.40 | 5.6% |
| Basic materials | 794.54 | -9.820 | -1.22% | -12.5% | 1,122.8 | 561.7 | 0.67 | 0.96 | 14.62 | 7.6% |
| Industrials | 763.16 | 0.500 | 0.07% | -17.7% | 958.5 | 602.9 | 2.61 | 0.83 | 12.43 | 5.3% |
| Consumer goods | 722.05 | 8.150 | 1.14% | 13.3% | 806.3 | 548.6 | 0.22 | 1.43 | 87.51 | 2.4% |
| Health care | 839.19 | 0.000 | 0.00% | -5.1% | 931.0 | 815.0 | 0.42 | 4.24 | 49.21 | 1.0% |
| Consumer services | 737.85 | 2.610 | 0.35% | -31.2% | 1,083.1 | 674.8 | 0.37 | 0.85 | 35.49 | 4.7% |
| Telecom | 971.40 | -3.430 | -0.35% | -13.0% | 1,116.7 | 802.2 | 2.98 | 1.40 | 10.22 | 6.2% |
| Insurance | 938.51 | 0.900 | 0.10% | -1.6% | 988.8 | 901.0 | 0.33 | 0.70 | 7.87 | 6.3% |
| Real estate | 837.22 | 2.500 | 0.30% | -20.9% | 1,083.4 | 763.2 | 1.76 | 0.58 | 20.60 | 2.8% |
| Financial services | 829.62 | -1.510 | -0.18% | -23.3% | 1,097.0 | 801.4 | 2.09 | 0.60 | 14.42 | 5.0% |
| Technology | 465.60 | 0.000 | 0.00% | -9.6% | 625.7 | 371.0 | 0.01 | 0.50 | -62.08 | 6.3% |
| | | | | | | | 27.68 | | | |



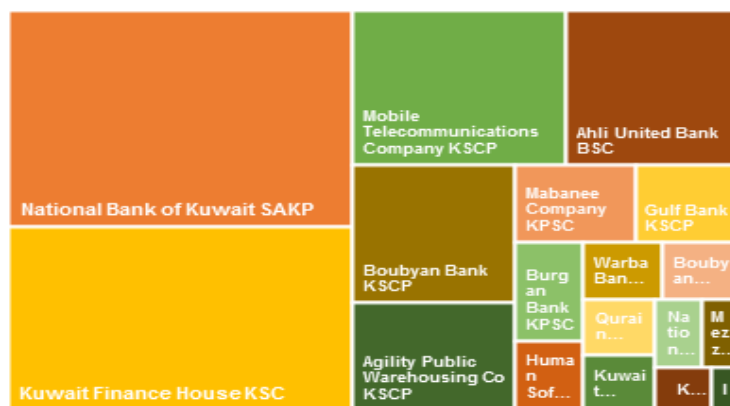
DAILY MARKET COVERAGE REPORT

NIC MENA SECURITIES - RESEARCH AND STUDIES DEP

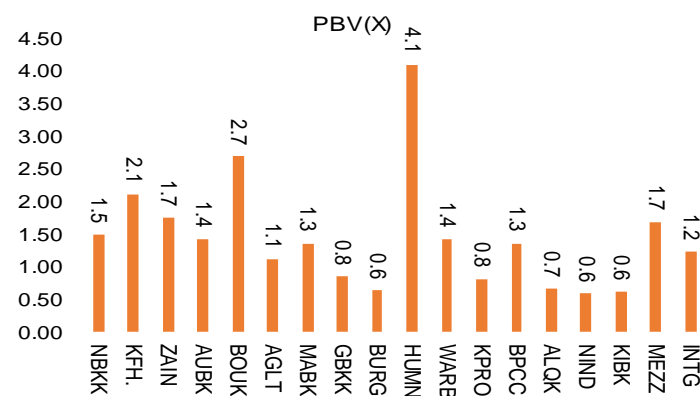


| Premier Market | Price | | | Valuation Multiples | | | MKT Cap | Price Performance | | Trading Indicators | | ROE | ROA | 52 Week (KD) | |
|--|------------|--------|---------|---------------------|--------------|-------------|---------------|-------------------|---------|--------------------|--------------|--------------|-------------|--------------|-------|
| | Close (KD) | Day Δ | Day % Δ | PBV(X) | PE(X) | DY% | Mn KD | MTD(%) | YTD (%) | Value (Mn KD) | (Mn Shrs) | (%) | (%) | High | Low |
| National Bank of Kuwait SAKP | 0.747 | -0.011 | -1.45% | 1.48 | 12.65 | 4.2% | 5,075 | -9% | -27% | 2.61 | 3.48 | 11.7% | 1.4% | 1.062 | 0.654 |
| Kuwait Finance House KSC | 0.568 | 0.000 | 0.00% | 2.10 | 17.21 | 2.9% | 4,319 | -7% | -23% | 1.38 | 2.43 | 12.2% | 1.3% | 0.761 | 0.473 |
| Mobile Telecommunications Company KSCP | 0.522 | -0.001 | -0.19% | 1.74 | 10.41 | 6.0% | 2,259 | -6% | -13% | 0.56 | 1.08 | 16.7% | 8.3% | 0.604 | 0.407 |
| Ahli United Bank BSC | 0.188 | -0.001 | -0.53% | 1.42 | 8.28 | 6.5% | 1,815 | 7% | -36% | 0.29 | 1.54 | 17.1% | 1.8% | 0.311 | 0.160 |
| Boubyan Bank KSCP | 0.508 | 0.004 | 0.79% | 2.67 | 24.56 | 1.2% | 1,538 | -5% | -17% | 0.13 | 0.26 | 10.9% | 1.2% | 0.638 | 0.380 |
| Agility Public Warehousing Co KSCP | 0.723 | 0.003 | 0.42% | 1.09 | 13.87 | 2.9% | 1,203 | -1% | -12% | 1.56 | 2.15 | 7.9% | 6.5% | 0.860 | 0.410 |
| Mabane Company KPSC | 0.579 | 0.013 | 2.30% | 1.35 | 11.31 | 1.8% | 638 | -15% | -32% | 0.93 | 1.62 | 11.9% | 6.1% | 0.877 | 0.434 |
| Gulf Bank KSCP | 0.190 | -0.001 | -0.52% | 0.83 | 8.65 | 5.3% | 551 | -10% | -37% | 0.15 | 0.77 | 9.6% | 1.0% | 0.323 | 0.180 |
| Burgan Bank KPSC | 0.178 | 0.003 | 1.71% | 0.62 | 5.50 | 6.4% | 466 | -10% | -42% | 0.32 | 1.79 | 11.3% | 1.2% | 0.359 | 0.175 |
| Human Soft Holding Company KSCP | 2.699 | -0.001 | -0.04% | 4.08 | 9.15 | 6.8% | 328 | -3% | -10% | 0.00 | 0.00 | 44.6% | 33.0% | 3.470 | 1.944 |
| Warba Bank KSCP | 0.195 | 0.001 | 0.52% | 1.41 | 18.57 | 0.0% | 307 | -5% | -26% | 0.05 | 0.24 | 7.6% | 0.5% | 0.279 | 0.164 |
| Kuwait Projects Company Holding KSCP | 0.149 | -0.002 | -1.32% | 0.80 | 9.00 | 6.2% | 270 | -14% | -31% | 0.13 | 0.88 | 8.9% | 4.0% | 0.231 | 0.147 |
| Boubyan Petrochemical Company KSCP | 0.597 | 0.002 | 0.34% | 1.35 | 25.48 | 8.6% | 301 | -3% | -11% | 0.13 | 0.21 | 5.3% | 3.1% | 0.904 | 0.395 |
| Qurain Petrochemical Industries Company KS | 0.267 | -0.009 | -3.26% | 0.65 | 9.69 | 5.7% | 273 | -4% | -14% | 0.14 | 0.52 | 6.7% | 6.1% | 0.358 | 0.163 |
| National Industries Group Holding KPSC | 0.153 | -0.001 | -0.65% | 0.58 | 4.71 | 7.0% | 218 | -6% | -37% | 0.15 | 0.98 | 12.3% | 7.0% | 0.261 | 0.121 |
| Kuwait International Bank KSCP | 0.164 | 0.000 | 0.00% | 0.60 | 9.75 | 6.1% | 167 | -6% | -37% | 0.25 | 1.50 | 6.1% | 0.6% | 0.277 | 0.162 |
| Mezzan Holding Company KSCP | 0.580 | 0.008 | 1.40% | 1.67 | 31.34 | 2.9% | 177 | -3% | 15% | 0.05 | 0.08 | 5.3% | 4.0% | 0.645 | 0.428 |
| Integrated Holding Co KSCC | 0.380 | 0.000 | 0.00% | 1.22 | 10.58 | 10.5% | 84 | -11% | -31% | 0.02 | 0.04 | 11.5% | 9.6% | 0.600 | 0.360 |
| Total | | | | 1.45 | 12.17 | 4.2% | 19,990 | | | 8.82 | 19.56 | 11.9% | 1.2% | | |

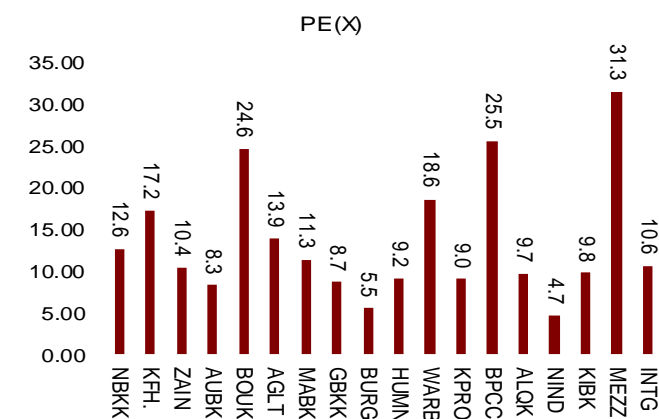
Market Cap



Price to Book Value



Price to Earning Value

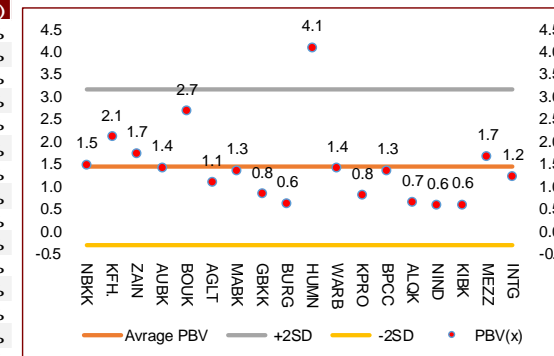


DAILY MARKET COVERAGE REPORT

NIC MENA SECURITIES - RESEARCH AND STUDIES DEP



| Premier Market | Price | | | Valuation Multiples | | | MKT Cap | Price Performance | | ROE | ROA |
|---|------------|--------|---------|---------------------|-------|-------|---------------|-------------------|---------|-------|-------|
| Company | Close (KD) | Day Δ | Day % Δ | PBV(X) | PE(X) | DY% | Mn KD | MTD(%) | YTD (%) | (%) | (%) |
| National Bank of Kuwait SAKP | 0.747 | -0.011 | -1.45% | 1.48 | 12.6 | 4.2% | 5,075 | -9% | -27% | 11.7% | 1.4% |
| Kuwait Finance House KSC | 0.568 | 0.000 | 0.00% | 2.10 | 17.2 | 2.9% | 4,319 | -7% | -23% | 12.2% | 1.3% |
| Mobile Telecommunications Company KSCP | 0.522 | -0.001 | -0.19% | 1.74 | 10.4 | 6.0% | 2,259 | -6% | -13% | 16.7% | 8.3% |
| Ahli United Bank BSC | 0.188 | -0.001 | -0.53% | 1.42 | 8.3 | 6.5% | 1,815 | 7% | -36% | 17.1% | 1.8% |
| Boubyan Bank KSCP | 0.508 | 0.004 | 0.79% | 2.67 | 24.6 | 1.2% | 1,538 | -5% | -17% | 10.9% | 1.2% |
| Agility Public Warehousing Co KSCP | 0.723 | 0.003 | 0.42% | 1.09 | 13.9 | 2.9% | 1,203 | -1% | -12% | 7.9% | 6.5% |
| Mabane Company KPSC | 0.579 | 0.013 | 2.30% | 1.35 | 11.3 | 1.8% | 638 | -15% | -32% | 11.9% | 6.1% |
| Gulf Bank KSCP | 0.190 | -0.001 | -0.52% | 0.83 | 8.7 | 5.3% | 551 | -10% | -37% | 9.6% | 1.0% |
| Burgan Bank KPSC | 0.178 | 0.003 | 1.71% | 0.62 | 5.5 | 6.4% | 466 | -10% | -42% | 11.3% | 1.2% |
| Human Soft Holding Company KSCP | 2.699 | -0.001 | -0.04% | 4.08 | 9.2 | 6.8% | 328 | -3% | -10% | 44.6% | 33.0% |
| Warba Bank KSCP | 0.195 | 0.001 | 0.52% | 1.41 | 18.6 | 0.0% | 307 | -5% | -26% | 7.6% | 0.5% |
| Kuwait Projects Company Holding KSCP | 0.149 | -0.002 | -1.32% | 0.80 | 9.0 | 6.2% | 270 | -14% | -31% | 8.9% | 4.0% |
| Boubyan Petrochemical Company KSCP | 0.597 | 0.002 | 0.34% | 1.35 | 25.5 | 8.6% | 301 | -3% | -11% | 5.3% | 3.1% |
| Qurain Petrochemical Industries Company KSC | 0.267 | -0.009 | -3.26% | 0.65 | 9.7 | 5.7% | 273 | -4% | -14% | 6.7% | 6.1% |
| National Industries Group Holding KPSC | 0.153 | -0.001 | -0.65% | 0.58 | 4.7 | 7.0% | 218 | -6% | -37% | 12.3% | 7.0% |
| Kuwait International Bank KSCP | 0.164 | 0.000 | 0.00% | 0.60 | 9.8 | 6.1% | 167 | -6% | -37% | 6.1% | 0.6% |
| Mezzan Holding Company KSCP | 0.580 | 0.008 | 1.40% | 1.67 | 31.3 | 2.9% | 177 | -3% | 15% | 5.3% | 4.0% |
| Integrated Holding Co KSCC | 0.380 | 0.000 | 0.00% | 1.22 | 10.6 | 10.5% | 84 | -11% | -31% | 11.5% | 9.6% |
| Total | | | | | | | 19,990 | | | | |



| Premier Market | Price | | | Moving Average | | RSI | MKT Cap | Price Performance | | 52 Week (KD) | |
|----------------|------------|---------|---------|----------------|---------|--------|---------|-------------------|---------|--------------|-------|
| Discription | Close (KD) | Day Δ | Day % Δ | 50 Day | 200 Day | 14 Day | Mn KD | MTD(%) | YTD (%) | High | Low |
| Premier Index | 5,263 | -16.280 | -0.31% | 5,465 | 5,991 | 17 | 19,990 | -0.061 | -24.50% | 7,172 | 4,499 |

Top 5 Performrs (Today's Price Change)

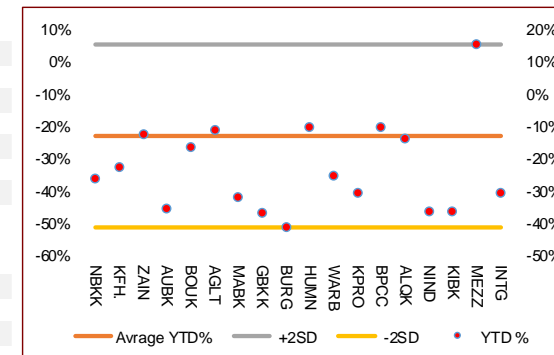
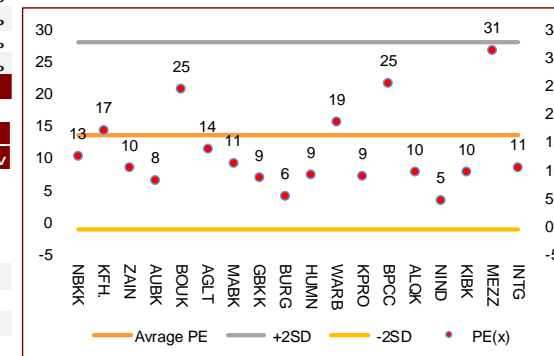
| | | | | | | | | | | | |
|-----------------------------|-------|-------|-------|-------|-------|----|-------|------|------|-------|-------|
| Mabane Company KPSC | 0.579 | 0.013 | 2.30% | 0.629 | 0.699 | 15 | 638 | -15% | -32% | 0.877 | 0.434 |
| Burgan Bank KPSC | 0.178 | 0.003 | 1.71% | 0.194 | 0.254 | 18 | 466 | -10% | -42% | 0.359 | 0.175 |
| Mezzan Holding Company KSCP | 0.580 | 0.008 | 1.40% | 0.585 | 0.540 | 44 | 177 | -3% | 15% | 0.645 | 0.428 |
| Boubyan Bank KSCP | 0.508 | 0.004 | 0.79% | 0.514 | 0.536 | 24 | 1,538 | -5% | -17% | 0.638 | 0.380 |
| Warba Bank KSCP | 0.195 | 0.001 | 0.52% | 0.205 | 0.228 | 28 | 307 | -5% | -26% | 0.279 | 0.164 |

Middel Performrs (Today's Price Change)

| | | | | | | | | | | | |
|--|-------|--------|--------|-------|-------|----|-------|------|------|-------|-------|
| Agility Public Warehousing Co KSCP | 0.723 | 0.003 | 0.42% | 0.698 | 0.709 | 45 | 1,203 | -1% | -12% | 0.860 | 0.410 |
| Boubyan Petrochemical Company KSCP | 0.597 | 0.002 | 0.34% | 0.580 | 0.618 | 38 | 301 | -3% | -11% | 0.904 | 0.395 |
| Kuwait Finance House KSC | 0.568 | 0.000 | 0.00% | 0.602 | 0.639 | 11 | 4,319 | -7% | -23% | 0.761 | 0.473 |
| Kuwait International Bank KSCP | 0.164 | 0.000 | 0.00% | 0.175 | 0.221 | 7 | 167 | -6% | -37% | 0.277 | 0.162 |
| Integrated Holding Co KSCC | 0.380 | 0.000 | 0.00% | 0.402 | 0.467 | 17 | 84 | -11% | -31% | 0.600 | 0.360 |
| Human Soft Holding Company KSCP | 2.699 | -0.001 | -0.04% | 2.714 | 2.895 | 33 | 328 | -3% | -10% | 3.470 | 1.944 |
| Mobile Telecommunications Company KSCP | 0.522 | -0.001 | -0.19% | 0.545 | 0.546 | 19 | 2,259 | -6% | -13% | 0.604 | 0.407 |
| Gulf Bank KSCP | 0.190 | -0.001 | -0.52% | 0.212 | 0.251 | 17 | 551 | -10% | -37% | 0.323 | 0.180 |

Bottom 5 Performrs (Today's Price Change)

| | | | | | | | | | | | |
|---|-------|--------|--------|-------|-------|----|-------|------|------|-------|-------|
| Qurain Petrochemical Industries Company KSC | 0.267 | -0.009 | -3.26% | 0.270 | 0.273 | 45 | 273 | -4% | -14% | 0.358 | 0.163 |
| National Bank of Kuwait SAKP | 0.747 | -0.011 | -1.45% | 0.789 | 0.864 | 13 | 5,075 | -9% | -27% | 1.062 | 0.654 |
| Kuwait Projects Company Holding KSCP | 0.149 | -0.002 | -1.32% | 0.165 | 0.192 | 24 | 270 | -14% | -31% | 0.231 | 0.147 |
| National Industries Group Holding KPSC | 0.153 | -0.001 | -0.65% | 0.165 | 0.198 | 24 | 218 | -6% | -37% | 0.261 | 0.121 |
| Ahli United Bank BSC | 0.188 | -0.001 | -0.53% | 0.181 | 0.233 | 59 | 1,815 | 7% | -36% | 0.311 | 0.160 |



DAILY MARKET COVERAGE REPORT

NIC MENA SECURITIES - RESEARCH AND STUDIES DEP



| Banking Sector | Price | | | Valuation Multiples | | | MKT Cap | Price Performance | | Trading Indicators | | ROE | ROA | 52 Week (KD) | |
|--|------------|--------|---------|---------------------|--------------|-------------|---------------|-------------------|---------|--------------------|-------------|---------------|--------------|--------------|-------|
| Company | Close (KD) | Day Δ | Day % Δ | PBV(X) | PE(X) | DY% | Mn KD | MTD(%) | YTD (%) | Value (Mn KD) | (Mn Shrs) | (%) | (%) | High | Low |
| National Bank of Kuwait SAKP | 0.747 | -0.011 | -1.45% | 1.48 | 12.65 | 4.2% | 5,075 | -9% | -27% | 2.61 | 3.48 | 11.7% | 1.4% | 1.062 | 0.654 |
| Kuwait Finance House KSC | 0.568 | 0.000 | 0.00% | 2.10 | 17.21 | 2.9% | 4,319 | -7% | -23% | 1.38 | 2.43 | 12.2% | 1.3% | 0.761 | 0.473 |
| Ahli United Bank BSC | 0.188 | -0.001 | -0.53% | 1.42 | 8.28 | 6.5% | 1,815 | 7% | -36% | 0.29 | 1.54 | 17.1% | 1.8% | 0.311 | 0.160 |
| Boubyan Bank KSCP | 0.508 | 0.004 | 0.79% | 2.67 | 24.56 | 1.2% | 1,538 | -5% | -17% | 0.13 | 0.26 | 10.9% | 1.2% | 0.638 | 0.380 |
| Commercial Bank of Kuwait KPSC | 0.500 | 0.000 | 0.00% | 1.32 | 0.00 | 3.7% | 967 | 0% | -5% | 0.00 | 0.01 | 0.0% | 0.0% | 0.555 | 0.465 |
| Gulf Bank KSCP | 0.190 | -0.001 | -0.52% | 0.83 | 8.65 | 5.3% | 551 | -10% | -37% | 0.15 | 0.77 | 9.6% | 1.0% | 0.323 | 0.180 |
| Burgan Bank KPSC | 0.178 | 0.003 | 1.71% | 0.62 | 5.50 | 6.4% | 466 | -10% | -42% | 0.32 | 1.79 | 11.3% | 1.2% | 0.359 | 0.175 |
| Ahli United Bank KSCP | 0.247 | 0.002 | 0.82% | 1.06 | 8.75 | 5.5% | 482 | -3% | -25% | 0.00 | 0.02 | 12.1% | 1.3% | 0.348 | 0.225 |
| Warba Bank KSCP | 0.195 | 0.001 | 0.52% | 1.41 | 18.57 | 0.0% | 307 | -5% | -26% | 0.05 | 0.24 | 7.6% | 0.5% | 0.279 | 0.164 |
| Al Ahli Bank of Kuwait KSCP | 0.165 | 0.002 | 1.23% | 0.47 | 9.24 | 8.5% | 265 | -7% | -36% | 0.02 | 0.13 | 5.1% | 0.6% | 0.345 | 0.156 |
| Kuwait International Bank KSCP | 0.164 | 0.000 | 0.00% | 0.60 | 9.75 | 6.1% | 167 | -6% | -37% | 0.25 | 1.50 | 6.1% | 0.6% | 0.277 | 0.162 |
| Ithmaar Holding BSC | 0.022 | 0.000 | 0.00% | 0.08 | 323.35 | 0.0% | 65 | 0% | 0% | 0.00 | 0.00 | 0.0% | 0.0% | 0.022 | 0.022 |
| Total Banking Sector - 12 Companies | | | | 1.35 | 13.35 | 3.9% | 16,016 | | | 5.2 | 12.2 | 10.13% | 1.18% | | |

| Basic materials | Price | | | Valuation Multiples | | | MKT Cap | Price Performance | | Trading Indicators | | ROE | ROA | 52 Week (KD) | |
|--|------------|--------|---------|---------------------|--------------|-------------|------------|-------------------|---------|--------------------|-------------|--------------|--------------|--------------|-------|
| Company | Close (KD) | Day Δ | Day % Δ | PBV(X) | PE(X) | DY% | Mn KD | MTD(%) | YTD (%) | Value (Mn KD) | (Mn Shrs) | (%) | (%) | High | Low |
| Boubyan Petrochemical Company KSCP | 0.597 | 0.002 | 0.34% | 1.35 | 25.5 | 8.6% | 301 | -3% | -11% | 0.13 | 0.21 | 5.3% | 3.1% | 0.904 | 0.395 |
| Qurain Petrochemical Industries Company KS | 0.267 | -0.009 | -3.26% | 0.65 | 9.7 | 5.7% | 273 | -4% | -14% | 0.14 | 0.52 | 6.7% | 6.1% | 0.358 | 0.163 |
| Al Kout Industrial Projects Company KPSC | 0.769 | 0.000 | 0.00% | 2.50 | 16.2 | 6.5% | 78 | -1% | -10% | 0.00 | 0.00 | 15.4% | 13.9% | 0.850 | 0.769 |
| Kuwait Foundry Company KPSC | 0.230 | -0.001 | -0.43% | 0.77 | 18.6 | 23.2% | 17 | 0% | -31% | 0.00 | 0.00 | 4.1% | 2.3% | 0.564 | 0.192 |
| Total Basic materials - 4 Companies | | | | 0.96 | 14.62 | 7.6% | 669 | | | 0.27 | 0.73 | 6.57% | 5.07% | | |

| Consumer goods | Price | | | Valuation Multiples | | | MKT Cap | Price Performance | | Trading Indicators | | ROE | ROA | 52 Week (KD) | |
|--|------------|-------|---------|---------------------|--------------|-------------|------------|-------------------|---------|--------------------|-------------|--------------|--------------|--------------|-------|
| Company | Close (KD) | Day Δ | Day % Δ | PBV(X) | PE(X) | DY% | Mn KD | MTD(%) | YTD (%) | Value (Mn KD) | (Mn Shrs) | (%) | (%) | High | Low |
| Mezzan Holding Company KSCP | 0.580 | 0.008 | 1.40% | 1.67 | 31.3 | 2.9% | 177 | -3% | 15% | 0.05 | 0.08 | 5.3% | 4.0% | 0.645 | 0.428 |
| Livestock Transport and Trading Co KPSC | 0.182 | 0.000 | 0.00% | 0.95 | 32.4 | 0.1% | 38 | -2% | 3% | 0.00 | 0.01 | 2.9% | 2.6% | 0.200 | 0.152 |
| Danah Al Safat Foodstuff Co KPSC | 0.012 | 0.000 | 0.00% | 0.25 | -0.3 | 0.1% | 1 | 1% | -25% | 0.00 | 0.00 | -84.8% | -88.3% | 0.029 | 0.010 |
| Total Basic materials - 3 Companies | | | | 1.43 | 87.51 | 2.4% | 216 | | | 0.05 | 0.09 | 1.64% | 0.90% | | |

DAILY MARKET COVERAGE REPORT

NIC MENA SECURITIES - RESEARCH AND STUDIES DEP



| Consumer services | Price | | | Valuation Multiples | | | MKT Cap | Price Performance | | Trading Indicators | | ROE | ROA | 52 Week (KD) | |
|---|------------|--------|---------|---------------------|--------------|-------------|------------|-------------------|---------|--------------------|-------------|--------------|--------------|--------------|-------|
| Company | Close (KD) | Day Δ | Day % Δ | PBV(X) | PE(X) | DY% | Mn KD | MTD(%) | YTD (%) | Value (Mn KD) | (Mn Shrs) | (%) | (%) | High | Low |
| Jazeera Airways Co KSCP | 0.593 | 0.013 | 2.24% | 2.95 | 7.9 | 5.9% | 119 | -11% | -46% | 0.12 | 0.20 | 37.1% | 9.3% | 1.110 | 0.372 |
| Kuwait National Cinema Comapany KPSC | 0.750 | 0.000 | 0.00% | 0.86 | 8.1 | 6.4% | 70 | 0% | -28% | 0.00 | 0.00 | 10.6% | 8.5% | 1.050 | 0.655 |
| Al Soor Fuel Marketing Company KSCP | 0.105 | 0.000 | 0.00% | 0.64 | 12.2 | 4.8% | 42 | -5% | -16% | 0.00 | 0.00 | 5.3% | 3.9% | 0.129 | 0.096 |
| Oula Fuel Marketing Co KSCP | 0.108 | 0.000 | 0.00% | 0.65 | 11.3 | 5.5% | 44 | -3% | -15% | 0.00 | 0.01 | 5.7% | 3.9% | 0.134 | 0.095 |
| Sultan Center Food Products Company KSCP | 0.054 | 0.000 | 0.00% | 0.67 | 13.6 | 0.0% | 30 | -2% | 4% | 0.00 | 0.01 | 4.9% | 3.8% | 0.060 | 0.036 |
| IFA Hotels and Resorts Co KSCP | 0.021 | -0.002 | -6.55% | 0.76 | -0.6 | 0.0% | 13 | -5% | -59% | 0.00 | 0.04 | -131.5% | -4.7% | 0.065 | 0.021 |
| Jiyad Holding Co KSCP | 0.031 | 0.000 | -0.32% | 0.28 | 6.2 | 0.0% | 11 | -3% | -20% | 0.00 | 0.00 | 4.5% | 3.7% | 0.047 | 0.029 |
| Kuwait Resorts Company KPSC | 0.048 | -0.002 | -3.46% | 0.33 | 8.7 | 0.0% | 9 | -14% | -23% | 0.04 | 0.82 | 3.8% | 3.8% | 0.064 | 0.040 |
| Future Kid Entertainment and Real Estate Co | 0.090 | 0.000 | 0.11% | 0.55 | 35.5 | 12.3% | 10 | 18% | 2% | 0.00 | 0.00 | 1.5% | 2.6% | 0.110 | 0.069 |
| Al Eid Food Company KSCP | 0.084 | 0.000 | 0.00% | 0.47 | 5.6 | 0.0% | 8 | -2% | 7% | 0.00 | 0.00 | 8.4% | 8.4% | 0.096 | 0.046 |
| Alrai Media Group Co KSCP | 0.037 | 0.000 | 0.00% | 0.83 | -2.4 | 0.0% | 9 | 0% | -2% | 0.00 | 0.00 | -34.2% | -19.3% | 0.049 | 0.029 |
| Kuwait Hotels Co KPSC | 0.093 | 0.000 | 0.00% | 1.31 | -5.4 | 0.0% | 5 | 0% | -7% | 0.00 | 0.00 | -24.4% | -13.2% | 0.100 | 0.086 |
| Palms Agro Production Co KSCP | 0.060 | 0.000 | 0.00% | 0.51 | -42.3 | 16.6% | 3 | 0% | 49% | 0.00 | 0.00 | -1.2% | 0.2% | 0.060 | 0.025 |
| Kuwait Cable Vision Company KPSC | 0.014 | 0.000 | 0.00% | 0.52 | -11.6 | 0.0% | 1 | 0% | 0% | 0.00 | 0.00 | -4.5% | -3.0% | 0.027 | 0.012 |
| Total Consumer services - 14 Companies | | | | 0.85 | 35.49 | 4.7% | 374 | | | 0.16 | 1.09 | 2.38% | 2.72% | | |

| Financial services | Price | | | Valuation Multiples | | | MKT Cap | Price Performance | | Trading Indicators | | ROE | ROA | 52 Week (KD) | |
|--|------------|--------|---------|---------------------|-------|------|---------|-------------------|---------|--------------------|-----------|-------|-------|--------------|-------|
| Company | Close (KD) | Day Δ | Day % Δ | PBV(X) | PE(X) | DY% | Mn KD | MTD(%) | YTD (%) | Value (Mn KD) | (Mn Shrs) | (%) | (%) | High | Low |
| Egypt Kuwait Holding Co SAE | 0.375 | 0.000 | 0.00% | 2.22 | 12.7 | 5.2% | 384 | 0% | -17% | 0.00 | 0.00 | 17.6% | 12.6% | 0.500 | 0.318 |
| Kuwait Projects Company Holding KSCP | 0.149 | -0.002 | -1.32% | 0.80 | 9.0 | 6.2% | 270 | -14% | -31% | 0.13 | 0.88 | 8.9% | 4.0% | 0.231 | 0.147 |
| National Industries Group Holding KPSC | 0.153 | -0.001 | -0.65% | 0.58 | 4.7 | 7.0% | 218 | -6% | -37% | 0.15 | 0.98 | 12.3% | 7.0% | 0.261 | 0.121 |
| GFH Financial Group BSC | 0.046 | 0.000 | 0.00% | 0.54 | 6.8 | 5.7% | 169 | -3% | -33% | 0.01 | 0.13 | 8.0% | 1.1% | 0.078 | 0.042 |
| Alimtiiaz Investment Group Co KSCP | 0.086 | -0.001 | -1.26% | 0.43 | 4.7 | 8.9% | 92 | -7% | -32% | 0.05 | 0.55 | 9.1% | 6.1% | 0.143 | 0.071 |
| Commercial Facilities Co SAKP | 0.190 | 0.000 | 0.00% | 0.59 | 7.3 | 8.9% | 96 | -3% | -12% | 0.00 | 0.00 | 8.0% | 4.4% | 0.235 | 0.179 |
| National Investments Co KSCP | 0.101 | 0.002 | 2.02% | 0.45 | 7.5 | 8.0% | 81 | -1% | -27% | 0.00 | 0.03 | 5.9% | 5.7% | 0.155 | 0.080 |
| Tamdeen Investment Co KSCP | 0.250 | 0.000 | 0.00% | 0.31 | 10.4 | 4.8% | 85 | 5% | -28% | 0.00 | 0.00 | 3.0% | 3.3% | 0.400 | 0.199 |
| Kuwait Investment Company KPSC | 0.105 | 0.000 | 0.00% | 0.46 | 3.3 | 9.6% | 58 | -2% | -30% | 0.01 | 0.06 | 13.9% | 7.8% | 0.172 | 0.095 |
| Noor Financial Investment Co KPSC | 0.132 | 0.001 | 0.76% | 0.82 | 6.6 | 3.7% | 53 | -1% | 15% | 0.01 | 0.07 | 12.5% | 10.1% | 0.184 | 0.076 |

DAILY MARKET COVERAGE REPORT

NIC MENA SECURITIES - RESEARCH AND STUDIES DEP



| Financial services | Price | | | Valuation Multiples | | | MKT Cap | Price Performance | | Trading Indicators | | ROE | ROA | 52 Week (KD) | |
|--|------------|--------|---------|---------------------|--------------|-------------|--------------|-------------------|---------|--------------------|-------------|--------------|--------------|--------------|-------|
| Company | Close (KD) | Day Δ | Day % Δ | PBV(X) | PE(X) | DY% | Mn KD | MTD(%) | YTD (%) | Value (Mn KD) | (Mn Shrs) | (%) | (%) | High | Low |
| Al Bareeq Holding KSCP | 0.106 | 0.000 | 0.00% | 1.11 | 21.2 | 0.0% | 46 | 0% | 6% | 0.00 | 0.00 | 5.2% | 5.1% | 0.110 | 0.100 |
| Kuwait Financial Centre KPSC | 0.073 | 0.001 | 0.69% | 0.37 | 5.0 | 6.7% | 35 | -6% | -31% | 0.00 | 0.04 | 7.3% | 5.1% | 0.121 | 0.070 |
| Aayan Leasing and Investment Co KSCP | 0.042 | 0.002 | 3.97% | 0.49 | -2.3 | 4.3% | 34 | -6% | -10% | 0.08 | 1.94 | -21.4% | -4.4% | 0.066 | 0.032 |
| Arabi Group Holdings KSCP | 0.198 | 0.000 | 0.00% | 1.07 | -19.9 | 0.0% | 33 | 0% | -28% | 0.00 | 0.00 | -5.4% | 3.6% | 0.337 | 0.074 |
| Arzan Financial Group for Financing and Invest | 0.038 | -0.001 | -1.55% | 0.31 | 27.6 | 0.0% | 30 | 0% | 60% | 0.03 | 0.77 | 1.1% | 2.3% | 0.047 | 0.022 |
| Privatization Holding Co KPSC | 0.042 | 0.000 | 0.00% | 0.31 | -37.7 | 0.0% | 25 | -1% | -16% | 0.00 | 0.00 | -0.8% | 0.8% | 0.059 | 0.037 |
| Asiya Capital Investments Company KSCP | 0.030 | -0.002 | -4.72% | 0.33 | 15.6 | 0.2% | 24 | -10% | -26% | 0.00 | 0.01 | 2.1% | 2.1% | 0.041 | 0.029 |
| KAMCO Investment Co KSCP | 0.071 | 0.001 | 1.71% | 0.43 | 8.0 | 0.0% | 24 | -7% | -21% | 0.02 | 0.26 | 5.4% | 5.9% | 0.111 | 0.060 |
| Kuwait and Middle East Financial Investment (| 0.094 | 0.000 | 0.00% | 1.53 | 37.5 | 0.0% | 25 | 4% | 5% | 0.00 | 0.00 | 4.1% | 4.3% | 0.108 | 0.046 |
| Umm Al Qaiwain General Investment Co PSC | 0.067 | 0.000 | 0.00% | 0.45 | 12.5 | 5.5% | 24 | 0% | 0% | 0.00 | 0.00 | 3.6% | 3.3% | 0.087 | 0.052 |
| Securities House KSCP | 0.039 | 0.000 | -0.26% | 0.53 | -56.7 | 0.0% | 22 | -4% | -16% | 0.03 | 0.67 | -0.9% | 1.4% | 0.050 | 0.027 |
| Gulf Investment House KSCP | 0.050 | 0.000 | -0.40% | 0.56 | 92.9 | 0.0% | 20 | -5% | -22% | 0.00 | 0.02 | 0.6% | 0.5% | 0.078 | 0.038 |
| Coast Investment and Development Co KSCP | 0.032 | 0.000 | 0.00% | 0.34 | 31.7 | 0.0% | 19 | -2% | -20% | 0.00 | 0.00 | 1.1% | 1.1% | 0.045 | 0.026 |
| Bayan Investment Co KSCP | 0.049 | 0.000 | 0.00% | 0.49 | -25.3 | 0.0% | 18 | -2% | 28% | 0.00 | 0.00 | -1.9% | -0.9% | 0.053 | 0.031 |
| First Investment Co KSCP | 0.023 | 0.000 | -1.29% | 0.36 | -0.3 | 0.0% | 15 | -15% | -33% | 0.00 | 0.14 | -113.6% | 63.0% | 0.045 | 0.022 |
| Al Madar Finance and Investment Co KSCP | 0.078 | -0.001 | -1.76% | 0.71 | 11.6 | 0.0% | 16 | -2% | -16% | 0.00 | 0.00 | 6.1% | 3.0% | 0.148 | 0.062 |
| Inovent BSC Public | 0.057 | -0.002 | -3.39% | 0.40 | 7.7 | 10.2% | 17 | 6% | -11% | 0.00 | 0.08 | 5.2% | 2.7% | 0.070 | 0.044 |
| Al Manar Financing and Leasing Co KSCC | 0.052 | 0.000 | 0.00% | 0.47 | 13.3 | 1.0% | 16 | -5% | -1% | 0.00 | 0.00 | 3.5% | 2.8% | 0.060 | 0.037 |
| Osoul Investment Co KSCP | 0.086 | 0.004 | 4.88% | 0.61 | 6.9 | 0.0% | 13 | -18% | 15% | 0.00 | 0.02 | 9.0% | 8.7% | 0.121 | 0.057 |
| National International Holding Co KSCP | 0.067 | 0.000 | 0.00% | 0.34 | 7.7 | 4.6% | 13 | -3% | -13% | 0.00 | 0.00 | 4.4% | 4.7% | 0.085 | 0.051 |
| Kuwait Finance and Investment Company KSC | 0.044 | 0.003 | 7.07% | 0.35 | 19.7 | 0.0% | 14 | 3% | -11% | 0.00 | 0.01 | 1.8% | 2.3% | 0.058 | 0.037 |
| Manazel Holding Co KPSC | 0.029 | 0.000 | 0.00% | 0.64 | 18.6 | 0.0% | 12 | -1% | -26% | 0.00 | 0.00 | 3.4% | 1.2% | 0.048 | 0.021 |
| Amar Finance and Leasing Company KSCP | 0.050 | 0.000 | 0.00% | 0.56 | 41.6 | 0.0% | 10 | -5% | 31% | 0.00 | 0.00 | 1.3% | 1.3% | 0.066 | 0.028 |
| UniCap Investment and Finance Co KSCP | 0.036 | -0.001 | -2.70% | 0.36 | -18.0 | 0.0% | 9 | -8% | -35% | 0.00 | 0.12 | -2.0% | 0.3% | 0.057 | 0.035 |
| Gulf North Africa Holding Co KPSC | 0.055 | 0.001 | 2.23% | 0.73 | 70.9 | 0.0% | 8 | 0% | -11% | 0.00 | 0.06 | 1.0% | 2.5% | 0.062 | 0.052 |
| International Financial Advisors KPSC | 0.031 | 0.000 | 0.99% | 0.92 | -0.4 | 2.1% | 8 | 1% | -43% | 0.00 | 0.00 | -222.8% | -17.0% | 0.060 | 0.027 |
| Kuwait Syrian Holding Co KSCP | 0.040 | 0.000 | 0.00% | 0.34 | -20.2 | 0.0% | 7 | -9% | 25% | 0.00 | 0.00 | -1.7% | -1.1% | 0.044 | 0.022 |
| Amwal International Investment Company KSC | 0.038 | 0.000 | 0.00% | 0.71 | 14.0 | 0.0% | 7 | 0% | 27% | 0.00 | 0.00 | 5.0% | 6.3% | 0.056 | 0.030 |
| Al Salam Group Holding Co KSCP | 0.021 | 0.000 | 1.49% | 0.18 | 154.8 | 0.0% | 6 | -11% | -30% | 0.01 | 0.30 | 0.1% | 0.1% | 0.040 | 0.018 |
| Warba Capital Holding Co KSC | 0.054 | 0.000 | 0.00% | 0.60 | -8.6 | 0.0% | 5 | -7% | -16% | 0.00 | 0.00 | -7.0% | -5.0% | 0.120 | 0.045 |
| Credit Rating and Collection Company KSCP | 0.035 | 0.000 | 0.00% | 1.08 | -23.7 | 0.0% | 6 | 10% | 76% | 0.00 | 0.00 | -4.6% | -4.3% | 0.037 | 0.015 |
| National Consumer Holding Company KSCP | 0.055 | 0.000 | 0.00% | 0.61 | 269.6 | 0.0% | 5 | 0% | 0% | 0.00 | 0.00 | 0.2% | 0.3% | 0.100 | 0.010 |
| Al Madina for Finance and Investment Co KSC | 0.010 | 0.000 | 0.00% | 0.35 | -2.0 | 0.0% | 4 | -13% | -31% | 0.00 | 0.46 | -17.9% | -7.7% | 0.019 | 0.009 |
| Ekttitab Holding Co KSCP | 0.014 | 0.000 | 0.75% | 0.32 | -9.5 | 0.0% | 4 | 0% | -10% | 0.02 | 1.20 | -3.4% | -3.0% | 0.019 | 0.010 |
| Al Deera Holding Co KPSC | 0.017 | 0.000 | 0.00% | 0.74 | -9.6 | 0.0% | 3 | -8% | -15% | 0.00 | 0.00 | -7.7% | -2.2% | 0.022 | 0.011 |
| Al Mal Investment Company KPSC | 0.009 | 0.000 | 0.00% | 0.41 | -0.9 | 0.0% | 3 | -2% | -6% | 0.00 | 0.49 | -47.6% | -23.1% | 0.016 | 0.008 |
| Gulf Franchising Holding Co KSCP | 0.065 | 0.000 | 0.00% | 1.01 | -2.8 | 0.0% | 3 | -5% | -14% | 0.00 | 0.00 | -36.2% | -10.8% | 0.160 | 0.001 |
| Tamkeen Holding KSCC | 0.005 | 0.000 | 0.00% | 0.05 | -7.2 | 0.0% | 0 | 0% | 0% | 0.00 | 0.00 | -0.7% | -0.7% | 0.007 | 0.004 |
| Total Financial services - 48 Companies | | | | 0.60 | 14.42 | 5.0% | 2,089 | | | 0.56 | 9.28 | 4.18% | 4.11% | | |

DAILY MARKET COVERAGE REPORT

NIC MENA SECURITIES - RESEARCH AND STUDIES DEP



| Health care | Price | | | Valuation Multiples | | | MKT Cap | Price Performance | | Trading Indicators | | ROE | ROA | 52 Week (KD) | |
|---|---------|------------|-------|---------------------|--------------|-------------|------------|-------------------|-------|--------------------|-------------|--------------|--------------|---------------|-----------|
| | Company | Close (KD) | Day Δ | Day % Δ | PBV(X) | PE(X) | | DY% | Mn KD | MTD(%) | YTD (%) | | | Value (Mn KD) | (Mn Shrs) |
| Al-Maidan Clinic for Oral Health Services Com | 1.220 | 0.000 | 0.00% | 7.90 | 47.8 | 0.6% | 305 | 0% | 0% | 0.00 | 0.00 | 16.5% | 11.6% | 1.240 | 1.220 |
| Advanced Technology Co KSCP | 0.660 | 0.000 | 0.00% | 1.72 | 53.7 | 2.3% | 99 | 10% | -19% | 0.00 | 0.00 | 3.2% | 3.5% | 1.000 | 0.580 |
| Yiaco Medical Company KPSC | 0.707 | 0.000 | 0.00% | 6.06 | 52.7 | 0.0% | 12 | 0% | 0% | 0.00 | 0.00 | 11.5% | 3.1% | 0.707 | 0.707 |
| Total Health care - 3 Companies | | | | 4.24 | 49.21 | 1.0% | 416 | | | 0.00 | 0.00 | 8.61% | 4.68% | | |

| Industrials | Price | | | Valuation Multiples | | | MKT Cap | Price Performance | | Trading Indicators | | ROE | ROA | 52 Week (KD) | |
|---|---------|------------|---------|---------------------|--------------|-------------|--------------|-------------------|-------|--------------------|-------------|--------------|--------------|---------------|-----------|
| | Company | Close (KD) | Day Δ | Day % Δ | PBV(X) | PE(X) | | DY% | Mn KD | MTD(%) | YTD (%) | | | Value (Mn KD) | (Mn Shrs) |
| Agility Public Warehousing Co KSCP | 0.723 | 0.003 | 0.42% | 1.09 | 13.9 | 2.9% | 1,203 | -1% | -12% | 1.56 | 2.15 | 7.9% | 6.5% | 0.860 | 0.410 |
| Human Soft Holding Company KSCP | 2.699 | -0.001 | -0.04% | 4.08 | 9.2 | 6.8% | 328 | -3% | -10% | 0.00 | 0.00 | 44.6% | 33.0% | 3.470 | 1.944 |
| ALAFCO Aviation Lease and Finance Compan | 0.152 | 0.000 | 0.00% | 0.45 | 8.2 | 6.6% | 145 | -8% | -44% | 0.06 | 0.42 | 5.5% | 3.7% | 0.300 | 0.138 |
| Kuwait Cement Co KSCP | 0.164 | -0.005 | -2.96% | 0.56 | 29.1 | 9.1% | 117 | -12% | -33% | 0.05 | 0.29 | 1.9% | 2.3% | 0.286 | 0.144 |
| Gulf Cable and Electrical Industries Co KPSC | 0.528 | -0.006 | -1.12% | 0.63 | 26.2 | 5.2% | 111 | -5% | 8% | 0.13 | 0.24 | 2.4% | 2.7% | 0.611 | 0.390 |
| Integrated Holding Co KSCC | 0.380 | 0.000 | 0.00% | 1.22 | 10.6 | 10.5% | 84 | -11% | -31% | 0.02 | 0.04 | 11.5% | 9.6% | 0.600 | 0.360 |
| Kuwait Portland Cement Co KPSC | 0.720 | 0.000 | 0.00% | 0.97 | 9.5 | 13.6% | 72 | -8% | -27% | 0.00 | 0.01 | 10.2% | 8.8% | 1.215 | 0.683 |
| United Projects for Aviation Services Co KSCF | 0.465 | 0.000 | 0.00% | 0.98 | 8.0 | 4.5% | 74 | 0% | -9% | 0.00 | 0.00 | 12.3% | 9.1% | 0.512 | 0.367 |
| Heavy Engineering Industries and Shipbuilding | 0.341 | 0.000 | 0.00% | 0.99 | 5.5 | 8.6% | 61 | -16% | -16% | 0.01 | 0.03 | 18.0% | 7.1% | 0.423 | 0.298 |
| Educational Holding Group KSCP | 0.280 | 0.000 | 0.00% | 1.62 | 8.9 | 5.3% | 69 | -5% | -36% | 0.00 | 0.01 | 18.3% | 17.8% | 0.475 | 0.228 |
| National Industries Company KPSC | 0.164 | 0.000 | 0.00% | 0.70 | 13.7 | 5.9% | 59 | 8% | -1% | 0.00 | 0.00 | 5.1% | 7.8% | 0.183 | 0.143 |
| ACICO Industries Company KSCP | 0.105 | 0.008 | 8.14% | 0.34 | 13.7 | 4.7% | 35 | -4% | -21% | 0.00 | 0.03 | 2.5% | 2.8% | 0.159 | 0.081 |
| Kuwait Company for Process Plant Constructi | 0.269 | -0.001 | -0.37% | 1.06 | 5.8 | 6.6% | 29 | -13% | 12% | 0.07 | 0.27 | 18.5% | 8.4% | 0.337 | 0.173 |
| Ras Al Khaimah for White Cement and Constr | 0.065 | 0.000 | 0.00% | 0.51 | 19.9 | 8.4% | 33 | 0% | 0% | 0.00 | 0.00 | 2.6% | 4.7% | 0.080 | 0.053 |
| Gulf Cement Co PSC | 0.038 | 0.000 | 0.00% | 0.38 | -13.8 | 11.0% | 31 | 0% | -31% | 0.00 | 0.00 | -2.7% | -2.0% | 0.063 | 0.032 |
| Combined Group Contracting Company KSCP | 0.159 | 0.000 | 0.00% | 0.55 | 7.2 | 12.9% | 26 | -14% | -39% | 0.08 | 0.47 | 7.7% | 3.0% | 0.264 | 0.150 |
| Sharjah Cement and Industrial Development C | 0.042 | 0.000 | 0.00% | 0.21 | 25.3 | 12.4% | 26 | 0% | 0% | 0.00 | 0.00 | 0.8% | 1.2% | 0.068 | 0.042 |
| KGL Logistics Company KPSC | 0.024 | 0.000 | -1.64% | 0.18 | 3.9 | 0.1% | 18 | -15% | -37% | 0.01 | 0.29 | 4.6% | 3.7% | 0.043 | 0.023 |
| Fujairah Cement Industries Co PSC | 0.036 | 0.002 | 7.21% | 0.15 | 17.3 | 11.8% | 13 | -11% | -21% | 0.00 | 0.10 | 0.8% | 2.3% | 0.057 | 0.033 |
| Shuaiba Industrial Company KPSC | 0.124 | 0.000 | 0.00% | 0.70 | 38.5 | 8.0% | 12 | -11% | -20% | 0.00 | 0.00 | 1.8% | 2.0% | 0.180 | 0.122 |
| Kuwait and Gulf Link Transport Company KPS | 0.044 | -0.002 | -4.78% | 0.18 | 13.2 | 0.0% | 12 | -4% | -31% | 0.00 | 0.00 | 1.4% | 2.2% | 0.084 | 0.042 |
| National Cleaning Co KSCP | 0.052 | 0.002 | 2.97% | 0.33 | 7.6 | 9.0% | 12 | -5% | -25% | 0.00 | 0.01 | 4.4% | 2.3% | 0.088 | 0.047 |
| Mubarrad Holding Co KSCP | 0.054 | -0.002 | -4.29% | 0.42 | 8.6 | 8.8% | 9 | -17% | -39% | 0.00 | 0.04 | 4.9% | 5.1% | 0.089 | 0.049 |
| Specialities Group Holding Company KPSC | 0.068 | 0.002 | 2.72% | 0.33 | 7.3 | 0.0% | 10 | 1% | -19% | 0.00 | 0.03 | 4.5% | 7.1% | 0.086 | 0.055 |
| Hilal Cement Company KSCP | 0.068 | -0.004 | -5.00% | 0.60 | -5.6 | 21.9% | 7 | -9% | -32% | 0.00 | 0.00 | -10.6% | -5.3% | 0.110 | 0.063 |
| National Ranges Co KPSC | 0.015 | -0.001 | -6.25% | 0.27 | -1.1 | 0.0% | 4 | -3% | 50% | 0.01 | 0.36 | -24.9% | -4.2% | 0.018 | 0.007 |
| Metal and Recycling Co KSCP | 0.046 | 0.000 | 0.00% | 0.38 | -1.9 | 0.0% | 4 | -5% | -9% | 0.00 | 0.00 | -19.7% | -7.2% | 0.070 | 0.020 |
| Salbookh Trading Co KSCP | 0.027 | -0.003 | -11.33% | 0.36 | -1.6 | 0.0% | 3 | -17% | -49% | 0.00 | 0.11 | -23.2% | -15.3% | 0.051 | 0.026 |
| Equipment Holding Co KSCP | 0.014 | 0.000 | 0.00% | 0.27 | -155.9 | 0.0% | 2 | 0% | -38% | 0.00 | 0.00 | -0.2% | 0.4% | 0.024 | 0.013 |
| Total Industrials - 29 Companies | | | | 0.83 | 12.43 | 5.3% | 2,607 | | | 2.00 | 4.90 | 6.67% | 5.05% | | |

DAILY MARKET COVERAGE REPORT

NIC MENA SECURITIES - RESEARCH AND STUDIES DEP



| Insurance | Price | | | Valuation Multiples | | | MKT Cap | Price Performance | | Trading Indicators | | ROE | ROA | 52 Week (KD) | |
|--------------------------------------|---------|------------|--------|---------------------|-------------|-------------|------------|-------------------|-------|--------------------|-------------|--------------|--------------|---------------|-----------|
| | Company | Close (KD) | Day Δ | Day % Δ | PBV(X) | PE(X) | | DY% | Mn KD | MTD(%) | YTD (%) | | | Value (Mn KD) | (Mn Shrs) |
| Gulf Insurance Group KSCP | 0.556 | 0.000 | 0.00% | 0.91 | 7.5 | 6.9% | 100 | -10% | -16% | 0.00 | 0.00 | 12.3% | 3.0% | 0.687 | 0.556 |
| Al Ahleia Insurance Co SAKP | 0.415 | 0.000 | 0.00% | 0.75 | 8.0 | 8.5% | 82 | 1% | -3% | 0.00 | 0.00 | 9.4% | 3.7% | 0.445 | 0.385 |
| Kuwait Insurance Company SAKP | 0.340 | 0.000 | 0.00% | 0.56 | 6.6 | 7.0% | 63 | 5% | 3% | 0.00 | 0.00 | 8.5% | 4.9% | 0.387 | 0.298 |
| Kuwait Reinsurance Company KSCP | 0.188 | 0.000 | 0.00% | 0.71 | 8.0 | 2.3% | 38 | 0% | 36% | 0.00 | 0.00 | 8.9% | 3.4% | 0.188 | 0.126 |
| Bahrain Kuwait Insurance Co BSC | 0.200 | 0.000 | 0.00% | 0.93 | 12.9 | 6.1% | 28 | 0% | 0% | 0.00 | 0.00 | 7.2% | 0.9% | 0.200 | 0.200 |
| Warba Insurance Company KSCP | 0.079 | 0.000 | 0.00% | 0.34 | 11.0 | 0.0% | 13 | 4% | 28% | 0.00 | 0.00 | 3.1% | 1.0% | 0.096 | 0.053 |
| First Takaful Insurance Co KPSC | 0.041 | 0.004 | 9.92% | 0.50 | 5.2 | 0.0% | 4 | 4% | 8% | 0.00 | 0.00 | 9.6% | 6.3% | 0.056 | 0.031 |
| Wethaq Takaful Insurance Co KCSP | 0.025 | -0.001 | -2.69% | 0.23 | -32.0 | 0.0% | 3 | 5% | 1% | 0.00 | 0.00 | -0.7% | -0.7% | 0.035 | 0.018 |
| Total Insurance - 8 Companies | | | | 0.70 | 7.87 | 6.3% | 330 | | | 0.00 | 0.00 | 8.86% | 3.00% | | |

| Oil and Gas | Price | | | Valuation Multiples | | | MKT Cap | Price Performance | | Trading Indicators | | ROE | ROA | 52 Week (KD) | |
|---|---------|------------|--------|---------------------|--------------|-------------|------------|-------------------|-------|--------------------|-------------|--------------|--------------|---------------|-----------|
| | Company | Close (KD) | Day Δ | Day % Δ | PBV(X) | PE(X) | | DY% | Mn KD | MTD(%) | YTD (%) | | | Value (Mn KD) | (Mn Shrs) |
| Burgan for Well Drilling Trading and Maintenanc | 0.070 | 0.000 | 0.00% | 0.25 | 7.1 | 0.0% | 16 | 0% | -13% | 0.00 | 0.00 | 3.6% | 3.2% | 0.098 | 0.062 |
| Energy House Holding Company KSCP | 0.020 | -0.001 | -6.67% | 0.61 | -2.7 | 0.0% | 15 | -21% | -14% | 0.00 | 0.05 | -22.5% | -15.6% | 0.036 | 0.014 |
| Gulf Petroleum Investment Company KSCP | 0.014 | 0.000 | 0.00% | 0.16 | -4.6 | 0.0% | 6 | -12% | -29% | 0.02 | 1.76 | -3.4% | -2.2% | 0.025 | 0.012 |
| Independent Petroleum Group KSCP | 0.380 | 0.000 | 0.00% | 0.70 | 10.4 | 7.9% | 69 | 0% | -21% | 0.00 | 0.00 | 6.8% | 2.2% | 0.497 | 0.375 |
| National Petroleum Services Company KSCP | 1.129 | 0.000 | 0.00% | 2.69 | 9.6 | 6.2% | 110 | 4% | -4% | 0.00 | 0.00 | 27.9% | 25.2% | 1.389 | 0.903 |
| Senergy Holding Company KSCP | 0.017 | -0.001 | -4.00% | 0.34 | -0.7 | 0.0% | 3 | -7% | -23% | 0.00 | 0.20 | -47.9% | -28.9% | 0.027 | 0.014 |
| Total Oil and Gas - 6 Companies | | | | 0.79 | 25.40 | 5.6% | 219 | | | 0.03 | 2.01 | 3.10% | 2.18% | | |

| Real estate | Price | | | Valuation Multiples | | | MKT Cap | Price Performance | | Trading Indicators | | ROE | ROA | 52 Week (KD) | |
|---------------------------------|---------|------------|--------|---------------------|--------|-------|---------|-------------------|-------|--------------------|---------|-------|------|---------------|-----------|
| | Company | Close (KD) | Day Δ | Day % Δ | PBV(X) | PE(X) | | DY% | Mn KD | MTD(%) | YTD (%) | | | Value (Mn KD) | (Mn Shrs) |
| Mabane Company KPSC | 0.579 | 0.013 | 2.30% | 1.35 | 11.3 | 1.8% | 638 | -15% | -32% | 0.93 | 1.62 | 11.9% | 6.1% | 0.877 | 0.434 |
| Salhia Real Estate Co KSCP | 0.408 | -0.001 | -0.24% | 1.24 | 9.4 | 4.9% | 202 | 6% | -2% | 0.03 | 0.06 | 13.2% | 6.2% | 0.460 | 0.324 |
| Commercial Real Estate Co KPSC | 0.094 | -0.004 | -4.49% | 0.57 | 11.6 | 6.1% | 169 | 0% | 2% | 0.07 | 0.78 | 5.0% | 3.8% | 0.103 | 0.083 |
| Tamdeen Real Estate Co KPSC | 0.260 | 0.000 | 0.00% | 0.39 | 13.2 | 3.7% | 109 | -1% | -19% | 0.00 | 0.00 | 3.0% | 2.3% | 0.343 | 0.248 |
| National Real Estate Co KSCP | 0.071 | 0.000 | -0.56% | 0.37 | 8.9 | 0.0% | 102 | -6% | -23% | 0.00 | 0.01 | 4.2% | 2.3% | 0.095 | 0.060 |
| Kuwait Real Estate Company KPSC | 0.082 | 0.002 | 1.88% | 0.55 | 10.0 | 0.5% | 70 | 1% | -22% | 0.02 | 0.29 | 5.5% | 5.9% | 0.115 | 0.070 |
| United Real Estate Company SAKP | 0.052 | 0.000 | 0.00% | 0.30 | -7.8 | 0.0% | 56 | 7% | -15% | 0.00 | 0.00 | -3.9% | 1.4% | 0.066 | 0.049 |

DAILY MARKET COVERAGE REPORT

NIC MENA SECURITIES - RESEARCH AND STUDIES DEP



| Real estate Company | Price | | | Valuation Multiples | | | MKT Cap Mn KD | Price Performance | | Trading Indicators | | ROE (%) | ROA (%) | 52 Week (KD) | |
|--|------------|--------|---------|---------------------|--------------|-------------|------------------|-------------------|---------|--------------------|-------------|--------------|--------------|--------------|-------|
| | Close (KD) | Day Δ | Day % Δ | PBV(X) | PE(X) | DY% | | MTD(%) | YTD (%) | Value (Mn KD) | (Mn Shrs) | | | High | Low |
| First Dubai for Real Estate Development Co KSC | 0.034 | 0.000 | 0.00% | 0.46 | 37.3 | 1.1% | 34 | -7% | -4% | 0.00 | 0.03 | 1.2% | 2.1% | 0.055 | 0.026 |
| Al Mazaya Holding Company KSCP | 0.051 | 0.000 | 0.78% | 0.40 | -3.7 | 0.1% | 32 | -4% | -16% | 0.01 | 0.16 | -11.0% | -0.9% | 0.067 | 0.047 |
| Dar Al Thuraya Real Estate Co KPSC | 0.151 | 0.000 | 0.00% | 1.43 | 39.8 | 0.0% | 22 | 6% | 115% | 0.00 | 0.00 | 3.6% | -1.2% | 0.190 | 0.040 |
| Injazzat Real Estate Development Company KSC | 0.080 | 0.000 | 0.00% | 0.51 | -3.8 | 8.6% | 27 | 4% | 0% | 0.00 | 0.00 | -13.4% | -6.9% | 0.091 | 0.061 |
| Ajjal Real Estate Entertainment Co KSCP | 0.139 | 0.000 | 0.00% | 0.21 | 12.8 | 0.0% | 26 | 5% | -23% | 0.00 | 0.00 | 1.6% | 1.9% | 0.224 | 0.121 |
| Arkan Al Kuwait Real Estate Company KSCP | 0.084 | 0.000 | 0.00% | 0.59 | 9.0 | 9.4% | 21 | -13% | -6% | 0.00 | 0.00 | 6.6% | 7.1% | 0.100 | 0.076 |
| Al Argan International Real Estate Co KSCP | 0.075 | -0.004 | -4.85% | 0.22 | 24.2 | 6.6% | 19 | -13% | -29% | 0.00 | 0.02 | 0.9% | 2.8% | 0.176 | 0.060 |
| Al-Enmaa Real Estate Company KSCP | 0.043 | 0.000 | 0.00% | 0.43 | 11.4 | 0.0% | 19 | -7% | -31% | 0.00 | 0.00 | 3.8% | 2.5% | 0.079 | 0.040 |
| Aayan Real Estate Company KSCP | 0.051 | 0.000 | 0.00% | 0.28 | 9.5 | 9.8% | 20 | -6% | -32% | 0.00 | 0.05 | 3.0% | 2.8% | 0.080 | 0.048 |
| Dalqan Real Estate Company KSCP | 0.350 | 0.000 | 0.00% | 2.91 | 59.0 | 0.0% | 19 | 0% | 0% | 0.00 | 0.00 | 4.9% | 5.1% | 0.350 | 0.350 |
| Kuwait Business Town Real Estate Co KSCP | 0.028 | 0.000 | 0.36% | 0.25 | 7.0 | 0.3% | 17 | -5% | -37% | 0.00 | 0.17 | 3.6% | 2.8% | 0.046 | 0.027 |
| Tijara and Realestate Investment Company KSC | 0.041 | 0.000 | 0.00% | 0.38 | 10.8 | 4.8% | 15 | -18% | -18% | 0.00 | 0.00 | 3.6% | 5.0% | 0.055 | 0.034 |
| Munshaat Real Estate Projects Co KSCP | 0.052 | 0.000 | 0.00% | 0.35 | 19.2 | 4.1% | 17 | 0% | -30% | 0.00 | 0.00 | 1.8% | -1.2% | 0.086 | 0.047 |
| Aqar Real Estate Investments Co KSCP | 0.077 | 0.000 | 0.00% | 0.56 | 6.4 | 6.4% | 16 | 0% | -4% | 0.00 | 0.00 | 8.7% | 9.3% | 0.089 | 0.062 |
| Sokouk Holding Co KSCP | 0.024 | 0.000 | 0.00% | 0.30 | -4.0 | 0.0% | 14 | -4% | -32% | 0.00 | 0.00 | -7.4% | 4.1% | 0.040 | 0.022 |
| Al-Arabiya Real Estate Co KSCP | 0.023 | 0.000 | 0.00% | 0.20 | 6.8 | 2.8% | 11 | -5% | -24% | 0.00 | 0.00 | 2.9% | 12.0% | 0.033 | 0.020 |
| Mashaer Holding Co KSCP | 0.054 | -0.003 | -4.75% | 0.41 | 5.8 | 0.0% | 10 | -7% | -23% | 0.00 | 0.05 | 7.1% | 5.5% | 0.086 | 0.048 |
| Osos Holding Group Co KSCP | 0.098 | 0.000 | 0.00% | 0.78 | 7.4 | 9.7% | 10 | 3% | -2% | 0.00 | 0.00 | 10.5% | 7.3% | 0.118 | 0.089 |
| Abyaar Real Estate Development Company KSC | 0.007 | 0.000 | -1.45% | 0.20 | -0.5 | 0.0% | 8 | -14% | -13% | 0.00 | 0.66 | -40.9% | -12.3% | 0.015 | 0.005 |
| Ream Real Estate Company KSCP | 0.065 | 0.000 | 0.00% | 0.49 | -2.6 | 3.4% | 7 | -23% | -27% | 0.00 | 0.00 | -19.0% | -10.1% | 0.140 | 0.060 |
| Investors Holding Group Company KSCP | 0.013 | 0.000 | -0.75% | 0.67 | -0.6 | 0.0% | 8 | -2% | 64% | 0.01 | 0.52 | -106.5% | 0.0% | 0.017 | 0.007 |
| Al Massaleh Real Estate Co KSCP | 0.030 | -0.002 | -5.31% | 0.34 | -4.2 | 0.0% | 7 | -3% | -22% | 0.00 | 0.05 | -8.1% | -2.3% | 0.040 | 0.026 |
| Kuwait Real Estate Holding Co KPSC | 0.027 | 0.000 | 0.00% | 0.04 | 0.7 | 6.6% | 5 | -5% | -6% | 0.00 | 0.00 | 5.5% | 2.3% | 0.034 | 0.023 |
| Kuwait Remal Real Estate Co KPSC | 0.015 | 0.000 | -1.95% | 0.23 | -2.1 | 0.0% | 5 | -12% | -40% | 0.00 | 0.20 | -11.0% | 3.1% | 0.031 | 0.013 |
| Real Estate Trade Centers Company KPSC | 0.026 | 0.001 | 4.00% | 0.14 | 149.4 | 0.0% | 3 | -22% | 12% | 0.00 | 0.00 | 0.1% | 0.1% | 0.050 | 0.018 |
| Taameer Real Estate Investment Co KSCP | 0.019 | 0.000 | 2.15% | 0.29 | -4.2 | 0.0% | 5 | -2% | -28% | 0.00 | 0.00 | -7.0% | -5.4% | 0.034 | 0.013 |
| Al Masaken International Real Estate Developr | 0.037 | 0.000 | 0.00% | 0.40 | 44.2 | 0.5% | 4 | 0% | -17% | 0.00 | 0.00 | 0.9% | 1.2% | 0.074 | 0.027 |
| Mena Real Estate Co KSCP | 0.026 | 0.001 | 2.38% | 0.18 | -57.5 | 0.0% | 4 | -3% | -38% | 0.00 | 0.07 | -0.3% | -0.1% | 0.043 | 0.021 |
| Sanam Real Estate Company KSCP | 0.030 | 0.000 | 0.00% | 0.38 | 40.4 | 0.0% | 4 | 0% | -25% | 0.00 | 0.00 | 0.9% | 0.9% | 0.045 | 0.027 |
| Ajwan Gulf Real Estate Co KSCP | 0.011 | 0.000 | 3.67% | 0.20 | -8.1 | 0.0% | 2 | -4% | -29% | 0.00 | 0.12 | -2.5% | -2.2% | 0.016 | 0.009 |
| Effect Real Estate Company KPSC | 0.021 | 0.000 | 0.00% | 0.29 | -8.9 | 4.9% | 2 | 0% | 0% | 0.00 | 0.00 | -3.3% | -0.6% | 0.025 | 0.020 |
| Al Mudon International Real Estate Co KSCP | 0.016 | 0.000 | 0.00% | 0.12 | -8.2 | 0.0% | 2 | 0% | -35% | 0.00 | 0.00 | -1.5% | 0.0% | 0.029 | 0.015 |
| Total Real estate - 39 Companies | | | | 0.58 | 20.60 | 2.8% | 1,760 | | | 1.09 | 4.87 | 2.79% | 2.96% | | |

DAILY MARKET COVERAGE REPORT

NIC MENA SECURITIES - RESEARCH AND STUDIES DEP



| Technology | Price | | | Valuation Multiples | | | MKT Cap | Price Performance | | Trading Indicators | | ROE | ROA | 52 Week (KD) | |
|---------------------------------------|------------|-------|---------|---------------------|---------------|-------------|----------|-------------------|---------|--------------------|-------------|---------------|---------------|--------------|-------|
| Company | Close (KD) | Day Δ | Day % Δ | PBV(X) | PE(X) | DY% | Mn KD | MTD(%) | YTD (%) | Value (Mn KD) | (Mn Shrs) | (%) | (%) | High | Low |
| Automated Systems Company KPSC | 0.064 | 0.000 | 0.00% | 0.50 | -62.08 | 6.3% | 6 | -6% | -10% | 0.00 | 0.00 | -0.81% | -0.73% | 0.086 | 0.051 |
| Total Technology - 1 Companies | | | | 0.50 | -62.08 | 6.3% | 6 | | | 0.00 | 0.00 | -0.81% | -0.73% | | |

| Telecom | Price | | | Valuation Multiples | | | MKT Cap | Price Performance | | Trading Indicators | | ROE | ROA | 52 Week (KD) | |
|--|------------|--------|---------|---------------------|--------------|-------------|--------------|-------------------|---------|--------------------|------------|---------------|--------------|--------------|-------|
| Company | Close (KD) | Day Δ | Day % Δ | PBV(X) | PE(X) | DY% | Mn KD | MTD(%) | YTD (%) | Value (Mn KD) | (Mn Shrs) | (%) | (%) | High | Low |
| Mobile Telecommunications Company KSCP | 0.522 | -0.001 | -0.19% | 1.74 | 10.41 | 6.0% | 2,259 | -6% | -13% | 0.563 | 1.08 | 16.70% | 8.33% | 0.604 | 0.407 |
| Kuwait Telecommunications Company KSCP | 0.840 | 0.000 | 0.00% | 1.95 | 9.62 | 4.2% | 419 | -2% | 7% | 0.013 | 0.02 | 20.25% | 12.02% | 0.870 | 0.680 |
| National Mobile Telecommunications Co KSCF | 0.570 | -0.012 | -2.06% | 0.50 | 9.48 | 11.3% | 286 | -14% | -31% | 0.040 | 0.07 | 5.27% | 5.12% | 0.835 | 0.550 |
| AAN Digital Services Co KSCP | 0.010 | 0.000 | -1.96% | 0.30 | 32.89 | 0.0% | 9 | -13% | -26% | 0.008 | 0.79 | 0.91% | 1.01% | 0.021 | 0.009 |
| Hayat Communications Co KSCP | 0.045 | 0.000 | 0.00% | 0.38 | 18.85 | 0.0% | 4 | 0% | -41% | 0.000 | 0.01 | 2.01% | 2.74% | 0.098 | 0.025 |
| Telecom - 5 Companies | | | | 1.40 | 10.22 | 6.2% | 2,976 | | | 0.6 | 2.0 | 13.70% | 7.86% | | |

| | | | | | | | | | | | | | | | |
|-----------------------------------|--|--|--|--|--|--|---------------|---------------|--|-------------|-------------|--------------|--------------|--|--|
| Total Market 172 Companies | | | | | | | 27,679 | -22.6% | | 10.0 | 37.1 | 7.94% | 1.41% | | |
|-----------------------------------|--|--|--|--|--|--|---------------|---------------|--|-------------|-------------|--------------|--------------|--|--|

End of Report

The information contained in this document is proprietary to NIC and is for use only by the persons to whom it is issued. This document is confidential and may not be distributed either in part or in whole without the express agreement of NIC. It is intended solely for the use of the individual or entity to whom it is addressed and others authorized to receive it.



شركة الاستثمار الوطنية
NATIONAL INVESTMENTS COMPANY

Sharq, Al Mutanabi Street, Khaleejia Tower | P.O. Box 25667, Safat 13117, Kuwait

T.: +965 2226 6666 | Fax: +965 2226 6793 | www.nic.com.kw