

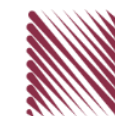
شركة الاستثمارات الوطنية  
NATIONAL INVESTMENTS COMPANY

**Boursa Kuwait – Daily Market Report**  
**MENA Securities – Research & Studies Dep.**

**Sunday, October 4, 2020**

# DAILY MARKET COVERAGE REPORT

## NIC MENA SECURITIES - RESEARCH AND STUDIES DEP



Index	Close	DTD Chg Net	DTD (%)	YTD (%)	52W High	52W Low	MKT CAP Bn (KD)	PBV (X)	PE (X)	DY (%)
All Share Index	5,594.00	148.80	2.73%	-11.0%	6,416.43	4,339.58	32.42	1.29	15.66	3.76%
Premier Index	6,205.27	184.43	3.06%	-11.1%	7,172.32	4,498.65	24.24	1.75	14.57	3.45%
Main Index	4,379.55	76.04	1.77%	-11.0%	4,932.47	3,965.63	8.18	0.73	20.12	4.66%
NIC 50 Index	6,862.10	194.49	2.92%	-8.0%	7,517.86	5,014.61	27.39	1.48	14.88	3.68%

Index	Value Mn(KD)	Volume (Mn share)
All Share Index	72.38	450.30
Premier Index	55.20	118.81
Main Index	17.18	331.49
NIC 50 Index	67.21	377.18

Market Breadth	UP ↑	Down ↓	No Chg ↔
All Share Index	102	16	55
Premier Index	20	0	0
Main Index	82	16	55
NIC 50 Index	45	1	4

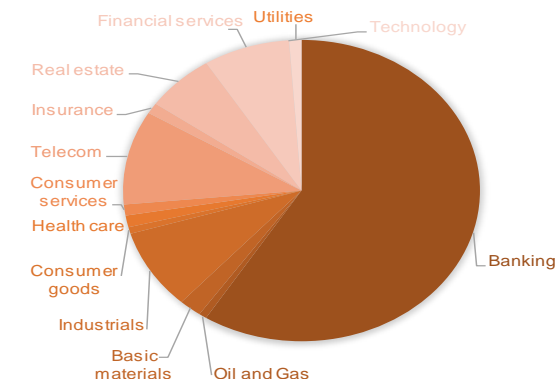
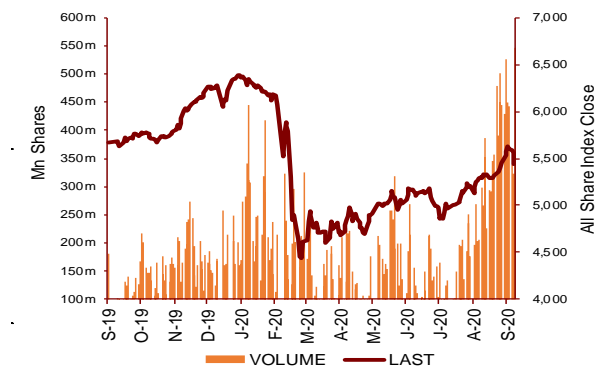
Today's Top 5 Gainer %	Close KD	Value KD	DTD (%)
First Investment	0.040	1,465,849	26.35%
Kuwait Remal Real Estate	0.023	16,907	14.93%
Jiyad Holding	0.046	321,006	14.71%
Investors Holding Group	0.017	562,271	10.83%
Al Manar Financing and Leasing	0.049	61	10.61%

Today's Top 5 Loser %	Close KD	Value KD	DTD (%)
Sanam Real Estate	0.032	484	-9.43%
Amwal International Investr	0.032	5,014	-9.27%
Salbookh Trading	0.034	7,834	-5.00%
Al Eid Food	0.055	220	-4.17%
Bayan Investment	0.045	10,105	-4.05%

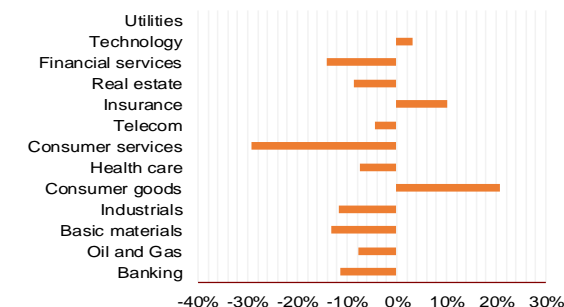
Today's Top 5 by Value	Close KD	DTD Chg	Trade Val Mn(KD)
Kuwait Finance House	0.689	4.24%	19.73
National Bank of Kuwait	0.895	2.87%	10.09
Aayan Leasing and Investment	0.092	6.23%	4.89
Mobile Telecommunications	0.584	1.74%	4.47
Ahli United Bank BSC	0.243	3.85%	3.57

Top 5 by Volume	Close KD	DTD Chg	Trade Vol Mn(Shrs)
Aayan Leasing and Investrn	0.092	6.23%	52.12
First Investment	0.040	26.35%	39.72
AAN Digital Services	0.014	6.98%	38.08
Investors Holding Group	0.017	10.83%	32.07
Gulf Petroleum Investment	0.020	8.70%	30.51

Sector	Close	DTD Chg Net	DTD (%)	YTD (%)	52W High	52W Low	MKT CAP Bn (KD)	PBV (X)	PE (X)	DY (%)
Banking	1,312.43	40.930	3.22%	-11.5%	1,536.8	986.4	19.12	1.74	15.94	3.3%
Oil and Gas	1,141.45	4.630	0.41%	-7.8%	1,372.2	985.7	0.23	0.83	26.72	5.3%
Basic materials	789.49	12.230	1.57%	-13.1%	991.8	561.7	0.66	0.95	14.51	7.6%
Industrials	820.31	22.520	2.82%	-11.6%	937.5	602.9	2.80	0.89	13.34	5.0%
Consumer goods	769.64	3.120	0.41%	20.8%	810.7	548.6	0.23	1.53	93.28	2.2%
Health care	820.13	0.000	0.00%	-7.3%	921.9	815.0	0.41	4.14	48.09	1.0%
Consumer services	757.53	16.790	2.27%	-29.4%	1,083.1	674.8	0.38	0.87	36.38	4.6%
Telecom	1,067.63	16.330	1.55%	-4.4%	1,116.7	802.2	3.27	1.54	11.24	5.6%
Insurance	1,051.01	2.890	0.28%	10.2%	1,068.3	901.0	0.38	0.79	8.94	5.6%
Real estate	966.74	22.250	2.36%	-8.7%	1,083.4	763.2	2.03	0.67	23.81	2.4%
Financial services	929.59	23.300	2.57%	-14.0%	1,097.0	801.4	2.54	0.73	16.43	4.1%
Technology	531.08	18.920	3.69%	3.1%	632.9	371.0	0.01	0.57	-70.81	5.5%
Utilities	857.89	15.780	1.87%	0.0%	1,042.1	781.6	0.36	4.68	29.15	0.0%
	5,594.00	148.80	2.73%	-11.0%	6,416.4	4,339.6	32.42	1.29	15.66	3.76%



YTD Sector Performance %



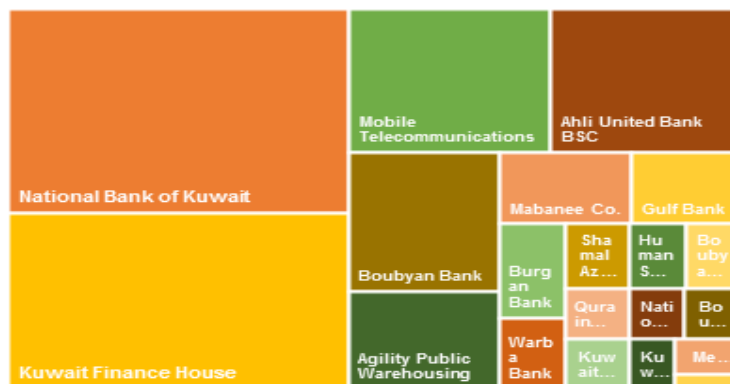
# DAILY MARKET COVERAGE REPORT

## NIC MENA SECURITIES - RESEARCH AND STUDIES DEP

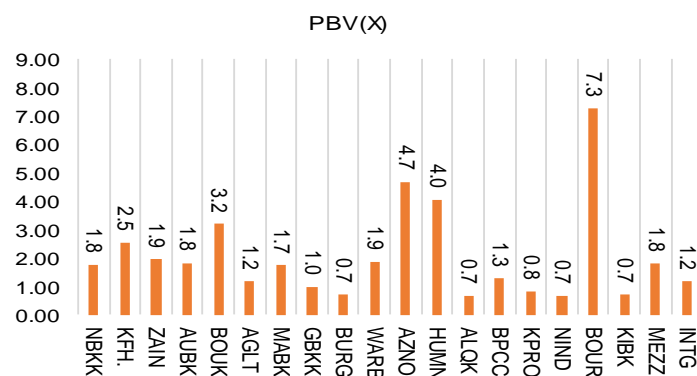


Premier Market	Price			Valuation Multiples			MKT Cap	Price Performance		Trading Indicators		ROE	ROA	52 Week (KD)	
	Close (KD)	Day Δ	Day % Δ	PBV(X)	PE(X)	DY%	Mn KD	MTD(%)	YTD (%)	Value (Mn KD)	(Mn Shrs)	(%)	(%)	High	Low
National Bank of Kuwait	0.895	0.025	2.87%	1.77	15.15	3.5%	6,078	4%	-12%	10.09	11.28	11.7%	1.4%	1.062	0.654
Kuwait Finance House	0.689	0.028	4.24%	2.54	20.83	2.4%	5,229	10%	-7%	19.73	28.89	12.2%	1.3%	0.761	0.473
Mobile Telecommunications	0.584	0.010	1.74%	1.95	11.65	5.3%	2,527	-1%	-2%	4.47	7.69	16.7%	4.6%	0.604	0.407
Ahli United Bank BSC	0.243	0.009	3.85%	1.83	10.70	5.0%	2,345	4%	-17%	3.57	14.83	17.1%	1.8%	0.311	0.160
Boubyan Bank	0.607	0.012	2.02%	3.19	29.34	1.0%	1,838	5%	-1%	1.50	2.48	10.9%	1.2%	0.638	0.380
Agility Public Warehousing	0.676	0.019	2.89%	1.18	14.91	2.7%	1,294	8%	-5%	2.25	3.34	7.9%	4.2%	0.748	0.357
Mabane Co.	0.749	0.019	2.60%	1.75	14.67	1.4%	828	17%	-13%	1.08	1.45	11.9%	5.8%	0.877	0.434
Gulf Bank	0.228	0.008	3.64%	1.00	10.40	4.4%	662	7%	-25%	3.00	13.24	9.6%	1.0%	0.317	0.180
Burgan Bank	0.208	0.006	2.97%	0.73	6.44	5.5%	545	5%	-32%	0.72	3.46	11.3%	1.2%	0.324	0.175
Warba Bank	0.258	0.009	3.61%	1.86	24.57	0.0%	406	30%	-1%	2.71	10.58	7.6%	0.5%	0.279	0.164
Shamal Az-Zour Al-Oula Power & Water	0.326	0.006	1.88%	4.68	29.15	0.0%	359	2%	0%	1.81	5.52	16.1%	2.3%	0.500	0.297
Human Soft Holding	2.670	0.069	2.65%	4.04	9.05	6.9%	325	5%	-12%	0.51	0.19	44.6%	30.3%	3.470	1.944
Qurain Petrochemical Industries	0.278	0.004	1.46%	0.68	10.06	5.5%	284	-2%	-10%	0.09	0.32	6.7%	3.6%	0.323	0.163
Boubyan Petrochemical	0.563	0.013	2.36%	1.27	24.02	9.2%	284	5%	-16%	0.04	0.08	5.3%	2.1%	0.800	0.395
Kuwait Projects Company Holding	0.154	0.003	1.99%	0.82	9.30	6.0%	279	4%	-28%	0.38	2.45	8.9%	0.3%	0.225	0.147
National Industries Group Holding	0.176	0.010	6.02%	0.66	5.42	6.1%	251	13%	-27%	0.80	4.59	12.3%	3.7%	0.247	0.121
Boursa Kuwait Securities Co	1.163	0.023	2.02%	7.27	24.34	0.0%	234	0%	0%	0.81	0.70	29.9%	26.5%	1.210	0.990
Kuwait International Bank	0.195	0.009	4.84%	0.71	11.60	5.1%	199	13%	-25%	1.40	7.22	6.1%	0.6%	0.270	0.162
Mezzan Holding	0.624	0.001	0.16%	1.80	33.72	2.7%	190	-4%	25%	0.11	0.18	5.3%	2.2%	0.665	0.428
Integrated Holding	0.367	0.008	2.23%	1.18	10.22	10.9%	81	5%	-34%	0.11	0.30	11.5%	8.5%	0.600	0.342
<b>Total</b>		<b>184.43</b>	<b>3.06%</b>	<b>1.75</b>	<b>14.57</b>	<b>3.45%</b>	<b>24.24</b>	<b>5.9%</b>	<b>-11.1%</b>	<b>55.20</b>	<b>118.81</b>	<b>12.01%</b>	<b>1.56%</b>		

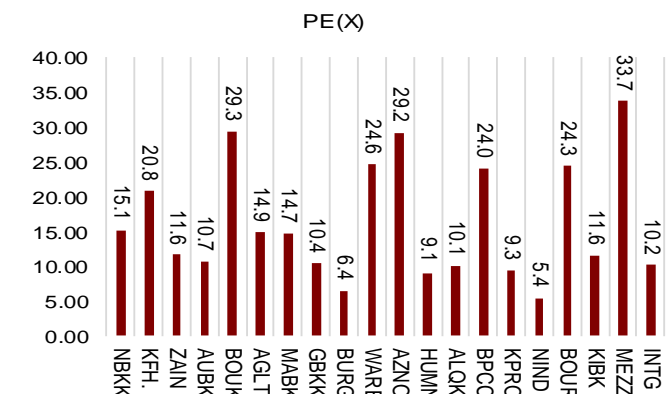
Market Capitalization



Price to Book Value

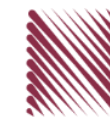


Price to Earning Value

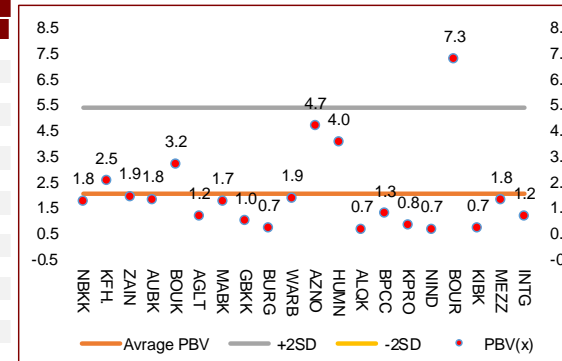


# DAILY MARKET COVERAGE REPORT

## NIC MENA SECURITIES - RESEARCH AND STUDIES DEP



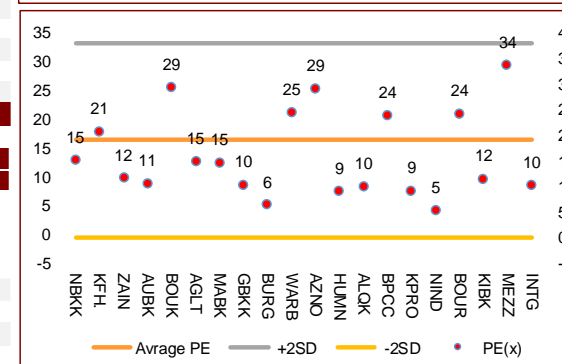
Premier Market	Price			Valuation Multiples			MKT Cap	Price Performance		ROE	ROA
Company	Close (KD)	Day Δ	Day % Δ	PBV(X)	PE(X)	DY%	Mn KD	MTD(%)	YTD (%)	(%)	(%)
National Bank of Kuwait	0.895	0.025	2.87%	1.77	15.1	3.5%	6,078	4.0%	-12.3%	11.7%	1.4%
Kuwait Finance House	0.689	0.028	4.24%	2.54	20.8	2.4%	5,229	10.1%	-6.5%	12.2%	1.3%
Mobile Telecommunications	0.584	0.010	1.74%	1.95	11.6	5.3%	2,527	-0.8%	-2.5%	16.7%	4.6%
Ahli United Bank BSC	0.243	0.009	3.85%	1.83	10.7	5.0%	2,345	4.3%	-17.2%	17.1%	1.8%
Boubyan Bank	0.607	0.012	2.02%	3.19	29.3	1.0%	1,838	4.7%	-0.9%	10.9%	1.2%
Agility Public Warehousing	0.676	0.019	2.89%	1.18	14.9	2.7%	1,294	8.3%	-5.0%	7.9%	4.2%
Mabane Co.	0.749	0.019	2.60%	1.75	14.7	1.4%	828	17.1%	-12.6%	11.9%	5.8%
Gulf Bank	0.228	0.008	3.64%	1.00	10.4	4.4%	662	6.6%	-25.1%	9.6%	1.0%
Burgan Bank	0.208	0.006	2.97%	0.73	6.4	5.5%	545	5.1%	-31.6%	11.3%	1.2%
Warba Bank	0.258	0.009	3.61%	1.86	24.6	0.0%	406	30.2%	-1.1%	7.6%	0.5%
Shamal Az-Zour Al-Oula Power & Water	0.326	0.006	1.88%	4.68	29.2	0.0%	359	1.9%	0.0%	16.1%	2.3%
Human Soft Holding	2.670	0.069	2.65%	4.04	9.1	6.9%	325	5.1%	-11.8%	44.6%	30.3%
Qurain Petrochemical Industries	0.278	0.004	1.46%	0.68	10.1	5.5%	284	-2.5%	-10.3%	6.7%	3.6%
Boubyan Petrochemical	0.563	0.013	2.36%	1.27	24.0	9.2%	284	4.9%	-15.9%	5.3%	2.1%
Kuwait Projects Company Holding	0.154	0.003	1.99%	0.82	9.3	6.0%	279	4.0%	-28.2%	8.9%	0.3%
National Industries Group Holding	0.176	0.010	6.02%	0.66	5.4	6.1%	251	12.8%	-27.0%	12.3%	3.7%
Boursa Kuwait Securities Co	1.163	0.023	2.02%	7.27	24.3	0.0%	234	0.0%	0.0%	29.9%	26.5%
Kuwait International Bank	0.195	0.009	4.84%	0.71	11.6	5.1%	199	13.4%	-25.3%	6.1%	0.6%
Mezzan Holding	0.624	0.001	0.16%	1.80	33.7	2.7%	190	-4.0%	24.8%	5.3%	2.2%
Integrated Holding	0.367	0.008	2.23%	1.18	10.2	10.9%	81	4.6%	-33.6%	11.5%	8.5%
<b>Total</b>	<b>184.43</b>	<b>3.06%</b>	<b>1.75</b>	<b>14.57</b>	<b>3.45%</b>	<b>24.24</b>	<b>5.9%</b>	<b>-11.1%</b>	<b>12.01%</b>	<b>1.56%</b>	



Premier Market	Price			Moving Average		RSI	MKT Cap	Price Performance		52 Week (KD)	
Description	Close (KD)	Day Δ	Day % Δ	50 Day	200 Day	14 Day	Mn KD	MTD(%)	YTD (%)	High	Low
Premier Index	6,205	184.43	3.06%	5,748	5,880	66	24	5.9%	-11.1%	7,172	4,499

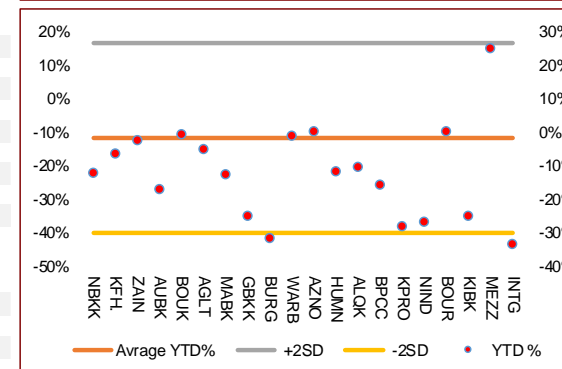
### Top 5 Performrs (Today's Price Change)

National Industries Group Holding	0.176	0.010	6.02%	0.163	0.185	61	251	12.8%	-27.0%	0.247	0.121
Kuwait International Bank	0.195	0.009	4.84%	0.176	0.204	68	199	13.4%	-25.3%	0.270	0.162
Kuwait Finance House	0.689	0.028	4.24%	0.622	0.639	75	5,229	10.1%	-6.5%	0.761	0.473
Ahli United Bank BSC	0.243	0.009	3.85%	0.217	0.227	74	2,345	4.3%	-17.2%	0.311	0.160
Gulf Bank	0.228	0.008	3.64%	0.210	0.237	68	662	6.6%	-25.1%	0.317	0.180



### Middle Performrs (Today's Price Change)

Warba Bank	0.258	0.009	3.61%	0.212	0.220	81	406	30.2%	-1.1%	0.279	0.164
Burgan Bank	0.208	0.006	2.97%	0.195	0.229	63	545	5.1%	-31.6%	0.324	0.175
Agility Public Warehousing	0.676	0.019	2.89%	0.638	0.613	72	1,294	8.3%	-5.0%	0.748	0.357
National Bank of Kuwait	0.895	0.025	2.87%	0.837	0.848	67	6,078	4.0%	-12.3%	1.062	0.654
Human Soft Holding	2.670	0.069	2.65%	2.654	2.794	38	325	5.1%	-11.8%	3.470	1.944
Mabane Co.	0.749	0.019	2.60%	0.655	0.683	81	828	17.1%	-12.6%	0.877	0.434
Boubyan Petrochemical	0.563	0.013	2.36%	0.554	0.574	69	284	4.9%	-15.9%	0.800	0.395
Integrated Holding	0.367	0.008	2.23%	0.373	0.447	33	81	4.6%	-33.6%	0.600	0.342
Boubyan Bank	0.607	0.012	2.02%	0.566	0.544	64	1,838	4.7%	-0.9%	0.638	0.380
Boursa Kuwait Securities Co	1.163	0.023	2.02%	0.100	0.100	69	234	0.0%	0.0%	1.210	0.996

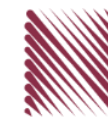


### Bottom 5 Performrs (Today's Price Change)

Mezzan Holding	0.624	0.001	0.16%	0.619	0.556	50	190	-4.0%	24.8%	0.665	0.428
Qurain Petrochemical Industries	0.278	0.004	1.46%	0.281	0.266	55	284	-2.5%	-10.3%	0.323	0.163
Mobile Telecommunications	0.584	0.010	1.74%	0.570	0.548	61	2,527	-0.8%	-2.5%	0.604	0.407
Shamal Az-Zour Al-Oula Power & Water	0.326	0.006	1.88%	0.218	0.055	51	359	1.9%	0.0%	0.500	0.297
Kuwait Projects Company Holding	0.154	0.003	1.99%	0.152	0.177	57	279	4.0%	-28.2%	0.225	0.147

# DAILY MARKET COVERAGE REPORT

NIC MENA SECURITIES - RESEARCH AND STUDIES DEP



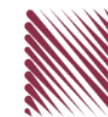
Banking Sector	Price			Valuation Multiples			MKT Cap	Price Performance		Trading Indicators		ROE	ROA	52 Week (KD)	
	Company	Close (KD)	Day Δ	Day % Δ	PBV(X)	PE(X)		DY%	Mn KD	MTD(%)	YTD (%)			Value (Mn KD)	(Mn Shrs)
National Bank of Kuwait	0.895	0.025	2.87%	1.77	15.15	3.5%	6,078	4%	-12%	10.09	11.28	11.7%	1.4%	1.062	0.654
Kuwait Finance House	0.689	0.028	4.24%	2.54	20.83	2.4%	5,229	10%	-7%	19.73	28.89	12.2%	1.3%	0.761	0.473
Ahli United Bank BSC	0.243	0.009	3.85%	1.83	10.70	5.0%	2,345	4%	-17%	3.57	14.83	17.1%	1.8%	0.311	0.160
Boubyan Bank	0.607	0.012	2.02%	3.19	29.34	1.0%	1,838	5%	-1%	1.50	2.48	10.9%	1.2%	0.638	0.380
Commercial Bank of Kuwait	0.500	0.000	0.00%	1.32	0.00	3.7%	965	0%	-5%	0.25	0.50	0.0%	0.0%	0.555	0.465
Gulf Bank	0.228	0.008	3.64%	1.00	10.40	4.4%	662	7%	-25%	3.00	13.24	9.6%	1.0%	0.317	0.180
Ahli United Bank	0.279	0.008	2.95%	1.19	9.89	4.9%	544	8%	-14%	0.25	0.88	12.1%	1.3%	0.330	0.225
Burgan Bank	0.208	0.006	2.97%	0.73	6.44	5.5%	545	5%	-32%	0.72	3.46	11.3%	1.2%	0.324	0.175
Warba Bank	0.258	0.009	3.61%	1.86	24.57	0.0%	406	30%	-1%	2.71	10.58	7.6%	0.5%	0.279	0.164
Al Ahli Bank of Kuwait	0.194	0.008	4.30%	0.56	10.86	7.2%	312	13%	-25%	0.38	1.99	5.1%	0.6%	0.303	0.156
Kuwait International Bank	0.195	0.009	4.84%	0.71	11.60	5.1%	199	13%	-25%	1.40	7.22	6.1%	0.6%	0.270	0.162
<b>Total Banking Sector - 11 Companies</b>				<b>1.74</b>	<b>15.94</b>	<b>3.3%</b>	<b>19,124</b>			<b>43.60</b>	<b>95.37</b>	<b>10.90%</b>	<b>1.21%</b>		

Basic materials	Price			Valuation Multiples			MKT Cap	Price Performance		Trading Indicators		ROE	ROA	52 Week (KD)	
	Company	Close (KD)	Day Δ	Day % Δ	PBV(X)	PE(X)		DY%	Mn KD	MTD(%)	YTD (%)			Value (Mn KD)	(Mn Shrs)
Qurain Petrochemical Industries	0.278	0.004	1.46%	0.68	10.06	5.5%	284	-2%	-10%	0.09	0.32	6.7%	3.6%	0.323	0.163
Boubyan Petrochemical	0.563	0.013	2.36%	1.27	24.02	9.2%	284	5%	-16%	0.04	0.08	5.3%	2.1%	0.800	0.395
Al Kout Industrial Projects	0.769	0.000	0.00%	2.50	16.21	6.5%	78	0%	-10%	0.00	0.00	15.4%	11.3%	0.850	0.769
Kuwait Foundry	0.253	-0.005	-1.94%	0.85	20.45	21.1%	18	6%	-24%	0.01	0.03	4.1%	3.8%	0.495	0.192
<b>Total Basic materials - 4 Companies</b>				<b>0.95</b>	<b>14.51</b>	<b>7.6%</b>	<b>664</b>			<b>0.14</b>	<b>0.44</b>	<b>6.57%</b>	<b>5.07%</b>		

Consumer goods	Price			Valuation Multiples			MKT Cap	Price Performance		Trading Indicators		ROE	ROA	52 Week (KD)	
	Company	Close (KD)	Day Δ	Day % Δ	PBV(X)	PE(X)		DY%	Mn KD	MTD(%)	YTD (%)			Value (Mn KD)	(Mn Shrs)
Mezzan Holding	0.624	0.001	0.16%	1.80	33.72	2.7%	190	-4%	25%	0.11	0.18	5.3%	2.2%	0.665	0.428
Livestock Transport and Trading	0.186	0.003	1.64%	0.97	33.15	0.1%	39	0%	6%	0.03	0.18	2.9%	2.0%	0.200	0.152
Danah Al Safat Foodstuff	0.012	0.000	0.00%	0.25	(0.30)	0.1%	1	0%	-25%	0.00	0.00	-84.8%	-43.2%	0.029	0.010
<b>Total Basic materials - 3 Companies</b>				<b>1.53</b>	<b>93.28</b>	<b>2.2%</b>	<b>230</b>			<b>0.15</b>	<b>0.36</b>	<b>1.64%</b>	<b>0.90%</b>		

# DAILY MARKET COVERAGE REPORT

## NIC MENA SECURITIES - RESEARCH AND STUDIES DEP



Consumer services	Price			Valuation Multiples			MKT Cap	Price Performance		Trading Indicators		ROE	ROA	52 Week (KD)	
Company	Close (KD)	Day Δ	Day % Δ	PBV(X)	PE(X)	DY%	Mn KD	MTD(%)	YTD (%)	Value (Mn KD)	(Mn Shrs)	(%)	(%)	High	Low
Jazeera Airways	0.603	0.013	2.20%	3.00	8.07	5.8%	121	8%	-45%	0.29	0.48	37.1%	9.0%	1.110	0.372
Kuwait National Cinema	0.724	0.024	3.43%	0.83	7.83	6.7%	67	8%	-31%	0.00	0.00	10.6%	7.2%	1.050	0.600
Oula Fuel Marketing	0.111	0.000	0.00%	0.67	11.62	5.3%	45	0%	-13%	0.00	0.04	5.7%	3.2%	0.134	0.095
Al Soor Fuel Marketing	0.111	0.001	0.91%	0.68	12.99	4.5%	45	1%	-11%	0.00	0.02	5.3%	3.7%	0.129	0.096
Sultan Center Food Products	0.055	0.002	3.77%	0.68	13.84	0.0%	31	0%	6%	0.01	0.12	4.9%	0.7%	0.060	0.036
IFA Hotels and Resorts	0.023	0.000	-0.86%	0.83	(0.63)	0.0%	14	-8%	-58%	0.01	0.62	-131.5%	-8.1%	0.062	0.021
Jiyad Holding	0.046	0.006	14.71%	0.41	9.18	0.0%	16	38%	16%	0.32	7.10	4.5%	2.8%	0.047	0.029
Kuwait Resorts	0.053	0.001	2.12%	0.36	9.64	0.0%	10	18%	-7%	0.02	0.37	3.8%	3.2%	0.060	0.038
Alrai Media Group	0.037	0.000	0.00%	0.83	(2.41)	0.0%	9	0%	-2%	0.00	0.00	-34.2%	-20.0%	0.045	0.031
Future Kid Entertainment and Real Estate	0.080	0.000	0.00%	0.46	30.22	14.4%	9	5%	-9%	0.00	0.00	1.5%	0.9%	0.110	0.069
Al Eid Food	0.055	-0.002	-4.17%	0.37	4.40	0.0%	7	-1%	-16%	0.00	0.00	8.4%	6.1%	0.080	0.038
Kuwait Hotels	0.111	0.005	4.72%	1.56	(6.41)	0.0%	6	21%	6%	0.00	0.00	-24.4%	-13.2%	0.111	0.069
Palms Agro Production	0.065	0.000	0.00%	0.55	(45.82)	15.3%	3	15%	62%	0.00	0.00	-1.2%	-0.9%	0.065	0.025
Kuwait Cable Vision	0.014	0.000	0.00%	0.52	(11.65)	0.0%	1	0%	0%	0.00	0.00	-4.5%	-3.0%	0.026	0.012
<b>Total Consumer services - 14 Companies</b>				<b>0.87</b>	<b>36.38</b>	<b>4.6%</b>	<b>383</b>			<b>0.66</b>	<b>8.76</b>	<b>2.38%</b>	<b>2.72%</b>		

Financial services	Price			Valuation Multiples			MKT Cap	Price Performance		Trading Indicators		ROE	ROA	52 Week (KD)	
Company	Close (KD)	Day Δ	Day % Δ	PBV(X)	PE(X)	DY%	Mn KD	MTD(%)	YTD (%)	Value (Mn KD)	(Mn Shrs)	(%)	(%)	High	Low
Egypt Kuwait Holding	0.365	0.000	0.00%	2.16	12.32	5.4%	374	-2%	-19%	0.00	0.00	17.6%	7.1%	0.500	0.318
Kuwait Projects Company Holding	0.154	0.003	1.99%	0.82	9.30	6.0%	279	4%	-28%	0.38	2.45	8.9%	0.3%	0.225	0.147
National Industries Group Holding	0.176	0.010	6.02%	0.66	5.42	6.1%	251	13%	-27%	0.80	4.59	12.3%	3.7%	0.247	0.121
Boursa Kuwait Securities Co	1.163	0.023	2.02%	7.27	24.34	0.0%	234	0%	0%	0.81	0.70	29.9%	26.5%	1.210	0.990
GFH Financial Group	0.047	-0.002	-3.47%	0.51	6.45	6.0%	160	-7%	-31%	0.44	9.53	8.0%	1.3%	0.074	0.042
National Investments	0.140	0.007	5.26%	0.62	10.41	5.8%	112	18%	1%	0.40	2.86	5.9%	5.0%	0.158	0.080
Tamdeen Investment	0.305	0.000	0.00%	0.37	12.65	3.9%	104	22%	-12%	0.00	0.00	3.0%	2.2%	0.400	0.199
Alimtiq Investment Group	0.096	0.005	5.13%	0.46	5.02	8.2%	99	13%	-23%	0.52	5.45	9.1%	5.2%	0.137	0.071
Commercial Facilities	0.186	0.004	2.20%	0.58	7.17	9.0%	94	1%	-14%	0.00	0.00	8.0%	4.2%	0.235	0.179
Kuwait Investment	0.133	0.005	3.91%	0.58	4.16	7.6%	73	18%	-11%	0.07	0.56	13.9%	6.0%	0.172	0.095
Aayan Leasing and Investment	0.092	0.005	6.23%	1.08	(5.05)	2.0%	74	56%	98%	4.89	52.12	-21.4%	-4.9%	0.102	0.032
Noor Financial Investment	0.170	0.013	8.28%	1.04	8.31	2.9%	67	5%	43%	0.07	0.39	12.5%	7.5%	0.184	0.076

# DAILY MARKET COVERAGE REPORT

## NIC MENA SECURITIES - RESEARCH AND STUDIES DEP



Financial services	Price			Valuation Multiples			MKT Cap	Price Performance		Trading Indicators		ROE	ROA	52 Week (KD)	
	Company	Close (KD)	Day Δ	Day % Δ	PBV(X)	PE(X)		DY%	Mn KD	MTD(%)	YTD (%)			Value (Mn KD)	(Mn Shrs)
Arzan Financial Group for Financing and Invest	0.058	0.002	3.75%	0.47	42.24	0.0%	46	0%	145%	1.08	18.56	1.1%	0.7%	0.064	0.022
Kuwait Financial Centre	0.085	0.001	1.31%	0.43	5.86	5.8%	41	5%	-20%	0.06	0.74	7.3%	3.5%	0.121	0.070
Gulf Investment House	0.096	0.002	2.13%	1.08	177.57	0.0%	39	3%	49%	0.03	0.30	0.6%	0.5%	0.108	0.038
Al Bareeq Holding	0.083	0.004	5.18%	0.87	16.62	0.0%	36	-21%	-17%	0.00	0.00	5.2%	5.0%	0.110	0.079
Arabi Group Holdings	0.198	0.000	0.00%	1.07	(19.90)	0.0%	33	0%	-28%	0.00	0.00	-5.4%	-0.6%	0.337	0.088
Kuwait and Middle East Financial Investment	0.114	0.004	3.64%	1.85	45.53	0.0%	30	-1%	27%	0.25	2.21	4.1%	3.2%	0.138	0.063
Umm Al Qaiwain General Investment Co	0.072	0.000	0.00%	0.48	13.53	5.1%	26	-19%	8%	0.00	0.00	3.6%	3.3%	0.096	0.052
Privatization Holding	0.043	0.001	1.43%	0.31	(38.32)	0.0%	26	1%	-14%	0.02	0.47	-0.8%	-0.5%	0.059	0.037
Asiya Capital Investments	0.034	0.002	7.50%	0.37	17.73	0.2%	27	11%	-16%	0.00	0.10	2.1%	2.0%	0.041	0.029
KAMCO Investment	0.073	0.001	1.53%	0.44	8.24	0.0%	25	3%	-20%	0.10	1.39	5.4%	2.3%	0.111	0.060
Securities House	0.045	0.002	4.39%	0.62	(66.08)	0.0%	25	12%	-1%	0.22	4.95	-0.9%	-0.7%	0.050	0.027
Inovent BSC Public	0.077	0.003	3.34%	0.54	10.38	7.6%	23	33%	18%	0.06	0.75	5.2%	2.9%	0.080	0.044
Coast Investment and Development	0.037	0.001	1.96%	0.39	36.37	0.0%	21	7%	-9%	0.01	0.37	1.1%	1.0%	0.045	0.026
First Investment	0.040	0.008	26.35%	0.62	(0.54)	0.0%	26	33%	16%	1.47	39.72	-113.6%	-62.0%	0.045	0.022
Bayan Investment	0.045	-0.002	-4.05%	0.45	(23.25)	0.0%	16	-6%	18%	0.01	0.24	-1.9%	-0.8%	0.053	0.031
Al Madar Finance and Investment	0.085	0.003	3.29%	0.77	12.65	0.0%	18	-1%	-9%	0.20	2.44	6.1%	5.0%	0.148	0.062
Manazel Holding	0.034	0.002	6.27%	0.74	21.79	0.0%	15	3%	-14%	0.07	1.98	3.4%	0.8%	0.048	0.021
Al Manar Financing and Leasing	0.049	0.005	10.61%	0.45	12.63	1.0%	15	11%	-5%	0.00	0.00	3.5%	2.7%	0.060	0.037
Kuwait Finance and Investment	0.046	0.002	5.29%	0.36	20.56	0.0%	14	2%	-7%	0.02	0.50	1.8%	1.2%	0.058	0.038
National International Holding	0.062	0.002	3.51%	0.33	7.46	4.7%	13	2%	-15%	0.00	0.01	4.4%	3.3%	0.081	0.051
Osoul Investment	0.082	0.002	2.50%	0.62	6.89	0.0%	13	-2%	9%	0.00	0.02	9.0%	8.2%	0.121	0.070
Amar Finance and Leasing	0.056	0.000	0.00%	0.63	46.88	0.0%	11	9%	47%	0.00	0.00	1.3%	1.2%	0.064	0.037
UniCap Investment and Finance	0.045	0.003	5.88%	0.46	(22.53)	0.0%	11	21%	-18%	0.01	0.26	-2.0%	-1.0%	0.057	0.035
Gulf North Africa Holding	0.060	0.001	2.23%	0.79	76.66	0.0%	9	7%	-4%	0.00	0.00	1.0%	0.6%	0.062	0.052
International Financial Advisors	0.031	0.000	0.00%	0.93	(0.42)	2.1%	8	0%	-42%	0.00	0.00	-222.8%	-19.3%	0.060	0.027
Al Salam Group Holding	0.028	0.003	10.51%	0.25	214.40	0.0%	8	23%	-3%	0.31	10.95	0.1%	0.1%	0.033	0.018
Amwal International Investment	0.032	-0.003	-9.27%	0.60	11.94	0.0%	6	-11%	8%	0.01	0.15	5.0%	2.6%	0.044	0.030
Credit Rating and Collection	0.032	0.000	0.00%	0.97	(21.20)	0.0%	5	-11%	58%	0.00	0.00	-4.6%	-4.3%	0.035	0.019
Ekttitab Holding	0.015	0.000	0.00%	0.37	(10.84)	0.0%	5	21%	3%	0.04	2.24	-3.4%	-3.0%	0.017	0.010
Al Madina for Finance and Investment	0.013	0.001	8.13%	0.45	(2.50)	0.0%	5	24%	-11%	0.09	6.90	-17.9%	-7.7%	0.019	0.009
Kuwait Syrian Holding Co	0.028	0.001	1.85%	0.24	(14.05)	0.0%	5	4%	-13%	0.01	0.24	-1.7%	-1.1%	0.043	0.022
Warba Capital Holding	0.047	0.000	0.00%	0.52	(7.39)	0.0%	5	-7%	-28%	0.00	0.00	-7.0%	-6.2%	0.071	0.042
National Consumer Holding	0.048	0.000	0.00%	0.53	235.16	0.0%	4	-13%	-13%	0.00	0.00	0.2%	0.2%	0.100	0.010
Al Deera Holding	0.016	0.000	0.00%	0.70	(9.02)	0.0%	3	0%	-20%	0.00	0.00	-7.7%	-1.7%	0.022	0.011
Al Mal Investment Company	0.009	0.000	3.37%	0.41	(0.86)	0.0%	3	2%	-7%	0.03	3.24	-47.6%	-23.3%	0.016	0.008
Gulf Franchising Holding	0.048	0.000	0.00%	0.75	(2.08)	0.0%	2	-18%	-36%	0.00	0.00	-36.2%	-10.8%	0.160	0.001
Tamkeen Holding	0.005	0.000	0.00%	0.05	(7.18)	0.0%	0	0%	0%	0.00	0.00	-0.7%	-0.7%	0.005	0.005
<b>Total Financial services - 49 Companies</b>				<b>0.73</b>	<b>16.43</b>	<b>4.1%</b>	<b>2,537</b>			<b>12.48</b>	<b>177.38</b>	<b>4.42%</b>	<b>4.14%</b>		

# DAILY MARKET COVERAGE REPORT

## NIC MENA SECURITIES - RESEARCH AND STUDIES DEP



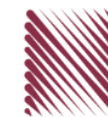
Health care	Price			Valuation Multiples			MKT Cap	Price Performance		Trading Indicators		ROE	ROA	52 Week (KD)	
Company	Close (KD)	Day Δ	Day % Δ	PBV(X)	PE(X)	DY%	Mn KD	MTD(%)	YTD (%)	Value (Mn KD)	(Mn Shrs)	(%)	(%)	High	Low
Al-Maidan Clinic for Oral Health Services	1.220	0.000	0.00%	7.90	47.78	0.6%	305	0%	0%	0.00	0.00	16.5%	10.9%	1.240	1.220
Advanced Technology	0.597	0.000	0.00%	1.55	48.60	2.5%	90	-5%	-26%	0.00	0.00	3.2%	0.7%	0.900	0.580
Yiaco Medical	0.707	0.000	0.00%	6.06	52.72	0.0%	12	0%	0%	0.00	0.00	11.5%	0.6%	0.707	0.707
<b>Total Health care - 3 Companies</b>				<b>4.14</b>	<b>48.09</b>	<b>1.0%</b>	<b>407</b>			<b>0.00</b>	<b>0.00</b>	<b>8.61%</b>	<b>4.68%</b>		

Industrials	Price			Valuation Multiples			MKT Cap	Price Performance		Trading Indicators		ROE	ROA	52 Week (KD)	
Company	Close (KD)	Day Δ	Day % Δ	PBV(X)	PE(X)	DY%	Mn KD	MTD(%)	YTD (%)	Value (Mn KD)	(Mn Shrs)	(%)	(%)	High	Low
Agility Public Warehousing	0.676	0.019	2.89%	1.18	14.91	2.7%	1,294	8%	-5%	2.25	3.34	7.9%	4.2%	0.748	0.357
Human Soft Holding	2.670	0.069	2.65%	4.04	9.05	6.9%	325	5%	-12%	0.51	0.19	44.6%	30.3%	3.470	1.944
ALAFCO Aviation Lease and Finance	0.164	0.007	4.46%	0.49	8.82	6.1%	156	4%	-40%	0.62	3.81	5.5%	1.4%	0.278	0.138
Gulf Cable and Electrical Industries	0.716	0.033	4.83%	0.86	35.51	3.8%	150	11%	47%	0.24	0.33	2.4%	2.2%	0.742	0.390
Kuwait Cement	0.206	0.013	6.74%	0.70	36.56	7.2%	147	19%	-16%	0.17	0.82	1.9%	1.3%	0.270	0.144
Integrated Holding	0.367	0.008	2.23%	1.18	10.22	10.9%	81	5%	-34%	0.11	0.30	11.5%	8.5%	0.600	0.342
Educational Holding Group	0.309	0.000	0.00%	1.79	9.78	4.8%	76	3%	-30%	0.01	0.02	18.3%	16.7%	0.475	0.228
Kuwait Portland Cement	0.759	0.008	1.07%	1.02	10.02	12.9%	76	4%	-23%	0.07	0.09	10.2%	8.2%	1.150	0.683
United Projects for Aviation Services	0.465	0.000	0.00%	0.98	7.96	4.5%	74	0%	-9%	0.00	0.00	12.3%	7.8%	0.512	0.367
Heavy Engineering Industries and Shipbuilding	0.375	0.012	3.31%	1.08	6.02	7.8%	68	3%	-7%	0.04	0.12	18.0%	5.9%	0.419	0.298
National Industries	0.153	-0.002	-1.29%	0.64	12.47	6.5%	54	-7%	-7%	0.02	0.12	5.1%	3.8%	0.173	0.143
ACICO Industries	0.102	0.001	0.99%	0.33	13.28	4.8%	34	8%	-23%	0.01	0.10	2.5%	0.6%	0.137	0.081
Ras Al Khaimah for White Cement and Constr	0.065	0.000	0.00%	0.51	19.94	8.4%	33	0%	0%	0.00	0.00	2.6%	2.0%	0.080	0.055
Kuwait Company for Process Plant Constructi	0.308	0.004	1.32%	1.22	6.60	5.8%	33	-1%	28%	0.04	0.11	18.5%	7.7%	0.337	0.175
Combined Group Contracting	0.184	0.012	6.98%	0.64	8.29	11.2%	30	19%	-26%	0.40	2.18	7.7%	1.2%	0.251	0.138
Gulf Cement	0.033	0.000	0.00%	0.33	(12.04)	12.6%	27	8%	-41%	0.01	0.15	-2.7%	-2.2%	0.060	0.029
Sharjah Cement and Industrial Development	0.042	0.000	0.00%	0.21	25.32	12.4%	26	0%	0%	0.00	0.00	0.8%	0.6%	0.063	0.042
KGL Logistics	0.028	0.001	5.20%	0.21	4.60	0.1%	22	14%	-24%	0.13	4.47	4.6%	2.9%	0.043	0.023
Kuwait and Gulf Link Transport	0.050	0.003	6.18%	0.21	15.06	0.0%	14	11%	-25%	0.02	0.37	1.4%	0.4%	0.077	0.042
Shuaiba Industrial	0.130	0.000	0.00%	0.72	40.15	7.6%	13	5%	-16%	0.00	0.00	1.8%	1.4%	0.180	0.122
National Cleaning	0.056	-0.001	-1.23%	0.33	7.54	9.0%	12	9%	-18%	0.01	0.25	4.4%	1.5%	0.088	0.047
Fujairah Cement Industries	0.034	0.000	0.00%	0.14	16.54	12.3%	12	8%	-24%	0.00	0.00	0.8%	0.4%	0.052	0.029
Hilal Cement	0.114	0.000	0.00%	0.99	(9.37)	13.2%	12	-1%	14%	0.00	0.00	-10.6%	-6.2%	0.126	0.063
Mubarrad Holding	0.063	0.002	3.29%	0.50	10.13	7.5%	10	13%	-29%	0.03	0.54	4.9%	4.1%	0.089	0.049
Specialities Group Holding	0.064	0.002	3.06%	0.35	7.61	0.0%	10	7%	-16%	0.02	0.32	4.5%	3.5%	0.078	0.050
National Ranges	0.015	0.001	9.29%	0.28	(1.12)	0.0%	4	-4%	53%	0.03	1.95	-24.9%	-5.3%	0.018	0.007
Salbookh Trading	0.034	-0.002	-5.00%	0.46	(2.00)	0.0%	3	25%	-32%	0.01	0.23	-23.2%	-15.9%	0.051	0.026
Metal and Recycling	0.039	0.000	0.00%	0.33	(1.66)	0.0%	4	-10%	-22%	0.00	0.00	-19.7%	-10.1%	0.070	0.020
Equipment Holding	0.016	0.000	0.63%	0.32	(185.92)	0.0%	2	9%	-26%	0.01	0.41	-0.2%	-0.1%	0.024	0.013
<b>Total Industrials - 29 Companies</b>				<b>0.89</b>	<b>13.34</b>	<b>5.0%</b>	<b>2,799</b>			<b>4.74</b>	<b>20.23</b>	<b>6.67%</b>	<b>5.05%</b>		



# DAILY MARKET COVERAGE REPORT

NIC MENA SECURITIES - RESEARCH AND STUDIES DEP



Insurance		Price			Valuation Multiples			MKT Cap	Price Performance		Trading Indicators		ROE	ROA	52 Week (KD)	
Company	Close (KD)	Day Δ	Day % Δ	PBV(X)	PE(X)	DY%	Mn KD	MTD(%)	YTD (%)	Value (Mn KD)	(Mn Shrs)	(%)	(%)	High	Low	
Gulf Insurance Group	0.715	0.000	0.00%	1.22	9.97	5.2%	133	17%	8%	0.00	0.00	12.3%	1.7%	0.720	0.550	
Al Ahleia Insurance	0.400	0.000	0.00%	0.76	8.06	8.4%	83	5%	-2%	0.00	0.00	9.4%	3.3%	0.445	0.367	
Kuwait Insurance	0.361	0.000	0.00%	0.59	6.99	6.6%	67	3%	9%	0.00	0.00	8.5%	4.6%	0.387	0.300	
Kuwait Reinsurance	0.221	0.000	0.00%	0.84	9.46	2.0%	45	13%	60%	0.00	0.00	8.9%	3.2%	0.221	0.126	
Bahrain Kuwait Insurance	0.200	0.000	0.00%	0.93	12.87	6.1%	28	0%	0%	0.00	0.00	7.2%	1.1%	0.200	0.200	
Warba Insurance	0.078	0.005	6.85%	0.34	11.07	0.0%	13	-1%	29%	0.00	0.00	3.1%	1.0%	0.094	0.051	
First Takaful Insurance	0.040	0.003	7.01%	0.48	5.03	0.0%	4	-1%	4%	0.00	0.00	9.6%	5.9%	0.056	0.031	
Wethaq Takaful Insurance	0.023	-0.001	-3.39%	0.21	(28.85)	0.0%	3	-5%	-9%	0.01	0.26	-0.7%	-0.7%	0.035	0.018	
<b>Total Insurance - 8 Companies</b>				<b>0.79</b>	<b>8.94</b>	<b>5.6%</b>	<b>375</b>			<b>0.01</b>	<b>0.26</b>	<b>8.86%</b>	<b>3.00%</b>			

Oil and Gas		Price			Valuation Multiples			MKT Cap	Price Performance		Trading Indicators		ROE	ROA	52 Week (KD)	
Company	Close (KD)	Day Δ	Day % Δ	PBV(X)	PE(X)	DY%	Mn KD	MTD(%)	YTD (%)	Value (Mn KD)	(Mn Shrs)	(%)	(%)	High	Low	
National Petroleum Services	1.100	0.000	0.00%	2.62	9.38	6.4%	107	10%	-6%	0.00	0.00	27.9%	23.6%	1.389	0.903	
Independent Petroleum Group	0.430	0.000	0.00%	0.79	11.72	7.0%	78	-4%	-11%	0.00	0.00	6.8%	2.2%	0.497	0.375	
Burgan for Well Drilling Trading and Maintenanc	0.078	0.000	0.00%	0.28	7.89	0.0%	18	13%	-3%	0.00	0.00	3.6%	1.1%	0.098	0.060	
Energy House Holding	0.020	0.000	1.52%	0.62	(2.74)	0.0%	15	1%	-12%	0.00	0.22	-22.5%	-17.0%	0.036	0.014	
Gulf Petroleum Investment	0.020	0.002	8.70%	0.22	(6.44)	0.0%	9	4%	0%	0.61	30.51	-3.4%	-2.3%	0.023	0.012	
Senergy Holding	0.019	0.000	-0.53%	0.38	(0.79)	0.0%	4	17%	-14%	0.01	0.41	-47.9%	-30.4%	0.027	0.014	
<b>Total Oil and Gas - 6 Companies</b>				<b>0.83</b>	<b>26.72</b>	<b>5.3%</b>	<b>230</b>			<b>0.62</b>	<b>31.14</b>	<b>3.10%</b>	<b>2.18%</b>			

Real estate		Price			Valuation Multiples			MKT Cap	Price Performance		Trading Indicators		ROE	ROA	52 Week (KD)	
Company	Close (KD)	Day Δ	Day % Δ	PBV(X)	PE(X)	DY%	Mn KD	MTD(%)	YTD (%)	Value (Mn KD)	(Mn Shrs)	(%)	(%)	High	Low	
Mabane Co.	0.749	0.019	2.60%	1.75	14.67	1.4%	828	17%	-13%	1.08	1.45	11.9%	5.8%	0.877	0.434	
Salhia Real Estate	0.400	0.000	0.00%	1.21	9.19	5.0%	198	1%	-4%	0.22	0.55	13.2%	5.8%	0.460	0.330	
Commercial Real Estate	0.105	0.004	3.96%	0.64	13.01	5.4%	190	8%	10%	0.07	0.70	5.0%	2.7%	0.111	0.083	
National Real Estate	0.076	0.001	1.48%	0.42	9.94	0.0%	114	8%	-13%	0.17	2.32	4.2%	2.4%	0.090	0.058	
Tamdeen Real Estate	0.260	-0.001	-0.38%	0.38	12.68	3.9%	105	4%	-19%	0.00	0.00	3.0%	2.2%	0.343	0.241	
Kuwait Real Estate	0.096	0.002	2.34%	0.67	12.21	0.4%	86	3%	-8%	0.05	0.48	5.5%	2.2%	0.115	0.070	
United Real Estate	0.050	0.002	3.09%	0.29	(7.44)	0.0%	54	-3%	-21%	0.00	0.01	-3.9%	-1.2%	0.063	0.045	
First Dubai for Real Estate Development	0.041	0.003	6.98%	0.56	45.40	0.9%	41	8%	16%	0.06	1.41	1.2%	1.0%	0.055	0.027	
Al Mazaya Holding	0.054	0.002	3.24%	0.43	(3.88)	0.1%	34	6%	-9%	0.07	1.26	-11.0%	-3.8%	0.067	0.047	
Ajial Real Estate Entertainment	0.142	-0.002	-1.39%	0.22	13.72	0.0%	27	8%	-17%	0.01	0.10	1.6%	1.4%	0.213	0.115	
Injazzat Real Estate Development	0.079	0.000	0.00%	0.51	(3.79)	8.7%	26	7%	-1%	0.00	0.00	-13.4%	-7.0%	0.091	0.061	

# DAILY MARKET COVERAGE REPORT

## NIC MENA SECURITIES - RESEARCH AND STUDIES DEP



Real estate Company	Price			Valuation Multiples			MKT Cap	Price Performance		Trading Indicators		ROE	ROA	52 Week (KD)	
	Close (KD)	Day Δ	Day % Δ	PBV(X)	PE(X)	DY%	Mn KD	MTD(%)	YTD (%)	Value (Mn KD)	(Mn Shrs)	(%)	(%)	High	Low
Aayan Real Estate	0.061	0.003	4.60%	0.36	12.02	7.8%	25	18%	-18%	0.06	1.03	3.0%	1.9%	0.080	0.048
Al Argan International Real Estate	0.093	0.000	0.00%	0.27	30.14	5.3%	24	6%	-11%	0.00	0.00	0.9%	0.3%	0.135	0.060
Munshaat Real Estate Projects	0.074	0.003	4.38%	0.50	27.24	2.9%	24	48%	0%	0.01	0.10	1.8%	0.7%	0.090	0.045
Ream Real Estate	0.204	0.000	0.00%	1.56	(8.21)	1.1%	22	0%	132%	0.00	0.00	-19.0%	-10.1%	0.204	0.060
Al-Enmaa Real Estate	0.049	0.002	4.91%	0.49	12.98	0.0%	22	13%	-21%	0.07	1.45	3.8%	2.4%	0.079	0.037
Arkan Al Kuwait Real Estate	0.085	0.004	4.42%	0.61	9.21	9.2%	21	2%	-4%	0.00	0.02	6.6%	3.5%	0.100	0.076
Dalqan Real Estate	0.318	0.000	0.00%	2.91	58.98	0.0%	19	0%	0%	0.00	0.00	4.9%	4.9%	0.318	0.318
Kuwait Business Town Real Estate	0.032	0.002	8.16%	0.29	8.12	0.2%	20	33%	-27%	0.10	3.23	3.6%	2.7%	0.046	0.022
Sokouk Holding	0.029	0.002	6.93%	0.36	(4.89)	0.0%	17	25%	-18%	0.17	6.06	-7.4%	-4.7%	0.040	0.022
Tijara and Realestate Investment	0.041	0.000	0.00%	0.38	10.65	4.9%	15	-4%	-19%	0.00	0.00	3.6%	1.9%	0.055	0.034
Al-Arabiya Real Estate	0.029	0.002	9.09%	0.25	8.73	2.2%	15	26%	-2%	0.14	4.89	2.9%	1.1%	0.033	0.020
Aqar Real Estate Investments	0.059	0.000	0.00%	0.43	4.96	8.4%	13	-9%	-26%	0.00	0.00	8.7%	7.3%	0.089	0.058
Dar Al Thuraya Real Estate	0.072	0.000	-0.14%	0.68	19.01	0.0%	11	0%	3%	0.00	0.01	3.6%	3.6%	0.190	0.040
Mashaer Holding	0.060	0.002	2.94%	0.46	6.40	0.0%	11	9%	-23%	0.08	1.30	7.1%	5.0%	0.086	0.048
Investors Holding Group	0.017	0.002	10.83%	0.88	(0.83)	0.0%	11	30%	118%	0.56	32.07	-106.5%	-57.2%	0.032	0.007
Osos Holding Group	0.087	0.000	0.00%	0.69	6.56	10.9%	9	-12%	-16%	0.00	0.04	10.5%	7.0%	0.118	0.081
Al Massaleh Real Estate	0.036	0.001	4.05%	0.40	(5.02)	0.0%	8	24%	-3%	0.01	0.16	-8.1%	-1.9%	0.040	0.026
Abyaar Real Estate Development	0.007	0.000	0.00%	0.21	(0.51)	0.0%	8	0%	-6%	0.00	0.00	-40.9%	-12.4%	0.013	0.005
Kuwait Remal Real Estate	0.023	0.003	14.93%	0.35	(3.17)	0.0%	7	59%	-5%	0.02	0.79	-11.0%	-3.9%	0.027	0.013
Kuwait Real Estate Holding	0.026	0.000	0.00%	0.04	0.69	6.8%	5	2%	-9%	0.00	0.00	5.5%	2.2%	0.034	0.022
Taameer Real Estate Investment	0.020	0.001	4.28%	0.29	(4.13)	0.0%	4	4%	-26%	0.00	0.02	-7.0%	-4.5%	0.034	0.013
Sanam Real Estate	0.032	-0.003	-9.43%	0.40	42.93	0.0%	4	6%	-21%	0.00	0.02	0.9%	0.9%	0.043	0.027
Mena Real Estate	0.029	0.001	2.49%	0.20	(64.19)	0.0%	4	17%	-31%	0.16	5.47	-0.3%	-0.2%	0.043	0.021
Al Masaken International Real Estate Developr	0.036	0.000	0.00%	0.40	43.60	0.5%	4	15%	-18%	0.00	0.00	0.9%	0.4%	0.074	0.026
Real Estate Trade Centers	0.029	0.002	5.56%	0.16	162.84	0.0%	4	11%	21%	0.00	0.02	0.1%	0.1%	0.050	0.018
Ajwan Gulf Real Estate	0.011	0.000	0.00%	0.19	(7.68)	0.0%	2	0%	-29%	0.00	0.00	-2.5%	-2.2%	0.016	0.009
Effect Real Estate	0.021	0.000	0.00%	0.29	(8.85)	4.9%	2	0%	0%	0.00	0.00	-3.3%	-3.2%	0.021	0.021
Al Mudon International Real Estate	0.016	0.000	0.00%	0.12	(8.22)	0.0%	2	0%	-35%	0.00	0.00	-1.5%	-1.4%	0.029	0.015
<b>Total Real estate - 39 Companies</b>				<b>0.67</b>	<b>23.81</b>	<b>2.4%</b>	<b>2,034</b>			<b>3.11</b>	<b>64.96</b>	<b>2.79%</b>	<b>2.96%</b>		

# DAILY MARKET COVERAGE REPORT

NIC MENA SECURITIES - RESEARCH AND STUDIES DEP



Technology	Price			Valuation Multiples			MKT Cap	Price Performance		Trading Indicators		ROE	ROA	52 Week (KD)	
Company	Close (KD)	Day Δ	Day % Δ	PBV(X)	PE(X)	DY%	Mn KD	MTD(%)	YTD (%)	Value (Mn KD)	(Mn Shrs)	(%)	(%)	High	Low
Automated Systems	0.073	0.003	3.69%	0.57	(70.81)	5.5%	7	7%	3%	0.00	0.01	-0.8%	-0.7%	0.087	0.051
<b>Total Technology - 1 Companies</b>				<b>0.57</b>	<b>(70.81)</b>	<b>5.5%</b>	<b>7</b>			<b>0.00</b>	<b>0.01</b>	<b>-0.81%</b>	<b>-0.73%</b>		

Telecom	Price			Valuation Multiples			MKT Cap	Price Performance		Trading Indicators		ROE	ROA	52 Week (KD)	
Company	Close (KD)	Day Δ	Day % Δ	PBV(X)	PE(X)	DY%	Mn KD	MTD(%)	YTD (%)	Value (Mn KD)	(Mn Shrs)	(%)	(%)	High	Low
Mobile Telecommunications	0.584	0.010	1.74%	1.95	11.65	5.3%	2,527	-1%	-2%	4.47	7.69	16.7%	4.6%	0.604	0.407
Kuwait Telecommunications	0.842	0.002	0.24%	1.95	9.64	4.2%	420	0%	7%	0.02	0.02	20.2%	11.1%	0.870	0.680
National Mobile Telecommunications	0.612	0.010	1.66%	0.54	10.18	10.6%	307	6%	-26%	0.05	0.08	5.3%	2.4%	0.835	0.550
AAN Digital Services	0.014	0.001	6.98%	0.41	45.01	0.0%	12	31%	1%	0.52	38.08	0.9%	0.7%	0.021	0.009
Hayat Communications	0.058	0.000	-0.34%	0.50	24.74	0.0%	5	-29%	-22%	0.00	0.00	2.0%	0.8%	0.098	0.033
<b>Telecom - 5 Companies</b>				<b>1.54</b>	<b>11.24</b>	<b>5.6%</b>	<b>3,271</b>			<b>5.07</b>	<b>45.87</b>	<b>13.70%</b>	<b>7.86%</b>		

Utilities	Price			Valuation Multiples			MKT Cap	Price Performance		Trading Indicators		ROE	ROA	52 Week (KD)	
Company	Close (KD)	Day Δ	Day % Δ	PBV(X)	PE(X)	DY%	Mn KD	MTD(%)	YTD (%)	Value (Mn KD)	(Mn Shrs)	(%)	(%)	High	Low
Shamal Az-Zour Al-Oula Power & Water	0.326	0.006	1.88%	4.68	29.15	0.0%	359	2%	0%	1.81	5.52	16.1%	2.3%	0.500	0.297
<b>Total Utilities - 1 Companies</b>				<b>4.68</b>	<b>29.15</b>	<b>0.0%</b>	<b>359</b>			<b>1.81</b>	<b>5.52</b>	<b>16.06%</b>	<b>2.26%</b>		

<b>Total Market 173 Companies</b>				<b>1.29</b>	<b>15.66</b>	<b>3.76%</b>	<b>32.42</b>			<b>72.38</b>	<b>450.30</b>	<b>8.26%</b>	<b>2.76%</b>		
-----------------------------------	--	--	--	-------------	--------------	--------------	--------------	--	--	--------------	---------------	--------------	--------------	--	--

## End of Report

The information contained in this document is proprietary to NIC and is for use only by the persons to whom it is issued. This document is confidential and may not be distributed either in part or in whole without the express agreement of NIC. It is intended solely for the use of the individual or entity to whom it is addressed and others authorized to receive it.

Note : ROE and ROA is calculated based on LTM net profit & shareholders' equity and LTM Operating Profits & Total Assets

Sources : National Investments Company Research and Studies Departments



شركة الاستثمار الوطنية  
NATIONAL INVESTMENTS COMPANY

Sharq, Al Mutanabi Street, Khaleejia Tower | P.O. Box 25667, Safat 13117, Kuwait

T.: +965 2226 6666 | Fax: +965 2226 6793 | [www.nic.com.kw](http://www.nic.com.kw)