

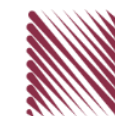
شركة الاستثمارات الوطنية
NATIONAL INVESTMENTS COMPANY

Boursa Kuwait – Daily Market Report
MENA Securities – Research & Studies Dep.

Monday, September 14, 2020

DAILY MARKET COVERAGE REPORT

NIC MENA SECURITIES - RESEARCH AND STUDIES DEP



Index	Close	DTD Chg Net	DTD (%)	YTD (%)	52W High	52W Low	MKT CAP Bn (KD)	PBV (X)	PE (X)	DY (%)
All Share Index	5,362.11	16.99	0.32%	-14.7%	6,416.43	4,339.58	31.07	1.24	15.01	3.92%
Premier Index	5,877.26	22.69	0.39%	-15.8%	7,172.32	4,498.65	22.96	1.66	13.80	3.64%
Main Index	4,345.85	5.35	0.12%	-11.6%	4,932.47	3,965.63	8.12	0.72	19.96	4.70%

Index	Value Mn(KD)	Volume (Mn share)
All Share Index	56.04	390.55
Premier Index	37.99	129.24
Main Index	18.05	261.30

Market Breadth	UP	Down	No Chg
All Share Index	51	50	72
Premier Index	13	5	2
Main Index	38	45	70

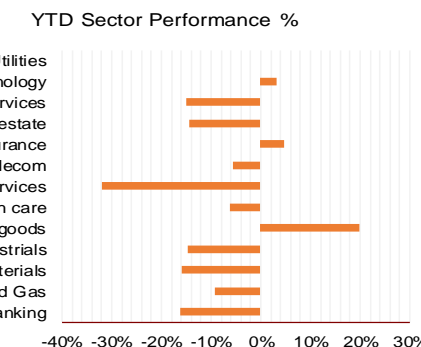
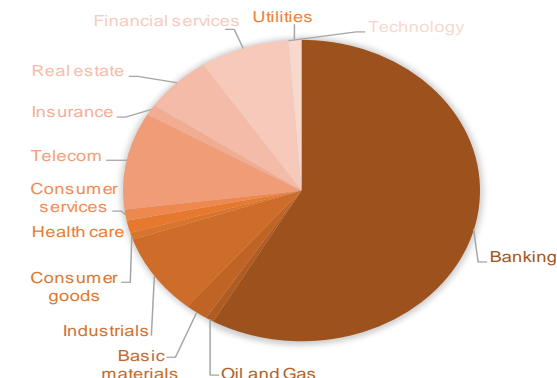
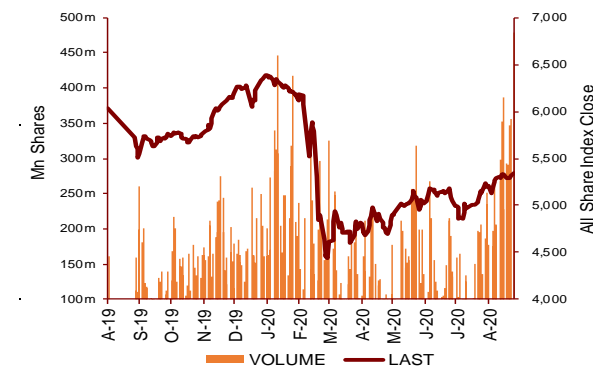
Today's Top 5 Gainer %	Close KD	Value KD	DTD (%)
Commercial Real Estate	0.109	754,848	12.37%
Al Madar Finance and Investmen	0.097	667,427	10.73%
Dar Al Thuraya Real Estate	0.125	342	9.65%
Real Estate Trade Centers	0.029	42,575	8.52%
Senergy Holding	0.020	56,660	8.33%

Today's Top 5 Loser %	Close KD	Value KD	DTD (%)
National Investments	0.136	1,641,369	-12.26%
Ayan Leasing and Investrn	0.090	4,541,567	-10.13%
Aqar Real Estate Investme	0.060	7,068	-6.10%
Burgan for Well Drilling Træ	0.078	304	-5.68%
Kuwait Remal Real Estate	0.020	19,344	-5.29%

Today's Top 5 by Value	Close KD	DTD Chg	Trade Val Mn(KD)
Boursa Kuwait Securities Co	1.055	0.00%	9.37
Warba Bank	0.238	4.85%	8.60
Kuwait Finance House	0.629	0.48%	5.29
Gulf Bank	0.214	0.47%	5.24
Ayan Leasing and Investment	0.090	-10.13%	4.54

Top 5 by Volume	Close KD	DTD Chg	Trade Vol Mn(Shrs)
Ayan Leasing and Investrn	0.090	-10.13%	48.33
Warba Bank	0.238	4.85%	36.13
Arzan Financial Group for f	0.055	-4.04%	26.93
Gulf Bank	0.214	0.47%	24.54
Kuwait International Bank	0.182	3.41%	23.02

Sector	Close	DTD Chg Net	DTD (%)	YTD (%)	52W High	52W Low	MKT CAP Bn (KD)	PBV (X)	PE (X)	DY (%)
Banking	1,242.13	5.120	0.41%	-16.2%	1,536.8	986.4	18.10	1.64	15.09	3.5%
Oil and Gas	1,133.61	-3.640	-0.32%	-9.1%	1,372.2	985.7	0.23	0.82	26.54	5.3%
Basic materials	763.56	0.660	0.09%	-15.9%	1,013.8	561.7	0.64	0.92	14.04	7.9%
Industrials	791.51	3.570	0.45%	-14.7%	937.5	602.9	2.70	0.86	12.87	5.2%
Consumer goods	762.77	-2.420	-0.32%	19.7%	810.7	548.6	0.23	1.51	92.44	2.2%
Health care	829.21	0.000	0.00%	-6.3%	921.9	815.0	0.41	4.19	48.62	1.0%
Consumer services	730.22	3.560	0.49%	-32.0%	1,083.1	674.8	0.37	0.84	35.07	4.8%
Telecom	1,058.22	-2.210	-0.21%	-5.5%	1,116.7	802.2	3.24	1.53	11.14	5.7%
Insurance	998.90	0.130	0.01%	4.7%	998.8	901.0	0.36	0.75	8.48	5.9%
Real estate	909.16	14.760	1.65%	-14.5%	1,083.4	763.2	1.91	0.63	22.39	2.5%
Financial services	919.34	-9.430	-1.02%	-15.0%	1,097.0	801.4	2.51	0.72	16.24	4.2%
Technology	531.08	-10.910	-2.01%	3.1%	625.7	371.0	0.01	0.57	-70.81	5.5%
Utilities	878.95	23.690	2.77%	0.0%	1,042.1	781.6	0.37	4.80	29.87	0.0%
	5,362.11	16.99	0.32%	-14.7%	6,416.4	4,339.6	31.07	1.24	15.01	3.92%



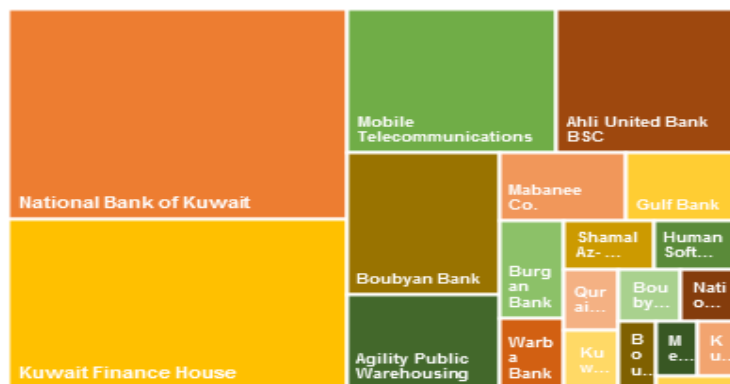
DAILY MARKET COVERAGE REPORT

NIC MENA SECURITIES - RESEARCH AND STUDIES DEP

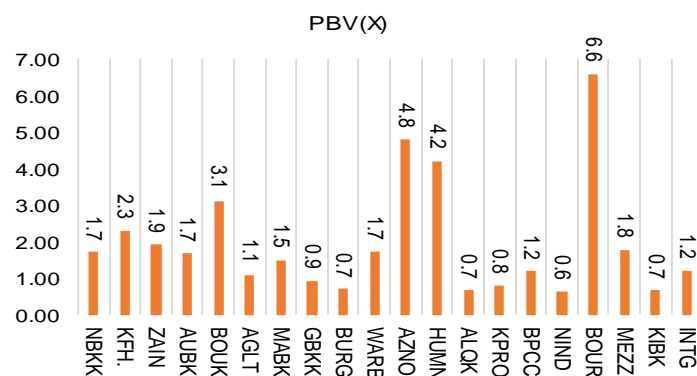


Premier Market	Price			Valuation Multiples			MKT Cap	Price Performance		Trading Indicators		ROE	ROA	52 Week (KD)	
	Close (KD)	Day Δ	Day % Δ	PBV(X)	PE(X)	DY%	Mn KD	MTD(%)	YTD (%)	Value (Mn KD)	(Mn Shrs)	(%)	(%)	High	Low
National Bank of Kuwait	0.865	-0.001	-0.12%	1.71	14.64	3.6%	5,874	1%	-15%	3.74	4.30	11.7%	1.4%	1.062	0.654
Kuwait Finance House	0.629	0.003	0.48%	2.32	19.02	2.6%	4,773	0%	-15%	5.29	8.44	12.2%	1.3%	0.761	0.473
Mobile Telecommunications	0.577	-0.001	-0.17%	1.92	11.51	5.4%	2,497	-3%	-4%	1.62	2.82	16.7%	4.6%	0.604	0.407
Ahli United Bank BSC	0.222	0.001	0.45%	1.67	9.78	5.5%	2,143	-5%	-24%	2.05	9.24	17.1%	1.8%	0.311	0.160
Boubyan Bank	0.592	0.003	0.51%	3.12	28.61	1.1%	1,793	3%	-3%	0.86	1.46	10.9%	1.2%	0.638	0.380
Agility Public Warehousing	0.629	0.004	0.64%	1.09	13.87	2.9%	1,204	1%	-12%	0.94	1.51	7.9%	4.2%	0.748	0.357
Mabane Co.	0.644	0.006	0.94%	1.50	12.62	1.6%	712	1%	-25%	0.37	0.57	11.9%	5.8%	0.877	0.434
Gulf Bank	0.214	0.001	0.47%	0.94	9.77	4.7%	622	0%	-29%	5.24	24.54	9.6%	1.0%	0.317	0.180
Burgan Bank	0.201	0.001	0.50%	0.70	6.22	5.7%	527	2%	-34%	0.17	0.86	11.3%	1.2%	0.332	0.175
Warba Bank	0.238	0.011	4.85%	1.72	22.67	0.0%	375	20%	-9%	8.60	36.13	7.6%	0.5%	0.279	0.164
Shamal Az-Zour Al-Oula Power & Water	0.334	0.009	2.77%	4.80	29.87	0.0%	367	4%	0%	2.46	7.51	16.1%	2.3%	0.500	0.297
Human Soft Holding	2.788	0.017	0.61%	4.22	9.45	6.6%	339	11%	-7%	0.63	0.23	44.6%	30.3%	3.470	1.944
Qurain Petrochemical Industries	0.275	0.004	1.48%	0.67	9.95	5.6%	281	-4%	-12%	0.19	0.70	6.7%	3.6%	0.341	0.163
Kuwait Projects Company Holding	0.151	0.001	0.67%	0.81	9.12	6.1%	274	1%	-30%	0.62	4.12	8.9%	0.3%	0.230	0.147
Boubyan Petrochemical	0.528	-0.006	-1.12%	1.19	22.53	9.8%	266	-1%	-21%	0.19	0.35	5.3%	2.1%	0.800	0.395
National Industries Group Holding	0.168	0.000	0.00%	0.63	5.18	6.4%	240	8%	-30%	0.44	2.62	12.3%	3.7%	0.247	0.121
Boursa Kuwait Securities Co	1.055	0.000	0.00%	6.60	22.08	0.0%	212	0%	0%	9.37	8.71	29.9%	26.5%	0.996	1.210
Mezzan Holding	0.620	-0.001	-0.16%	1.79	33.50	2.7%	189	-5%	24%	0.31	0.50	5.3%	2.2%	0.665	0.428
Kuwait International Bank	0.182	0.006	3.41%	0.66	10.82	5.5%	186	6%	-30%	4.14	23.02	6.1%	0.6%	0.270	0.162
Integrated Holding	0.381	-0.002	-0.52%	1.22	10.61	10.5%	84	9%	-31%	0.12	0.31	11.5%	8.5%	0.600	0.342
Total		22.69	0.39%	1.66	13.80	3.64%	22,956	0.3%	-15.8%	47.36	137.96	12.01%	1.56%		

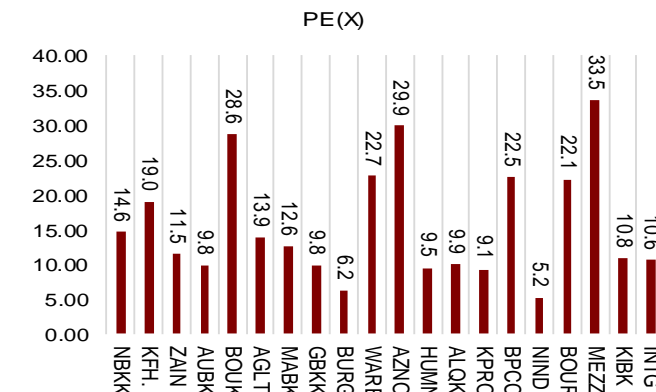
Market Capitalization



Price to Book Value

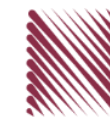


Price to Earning Value

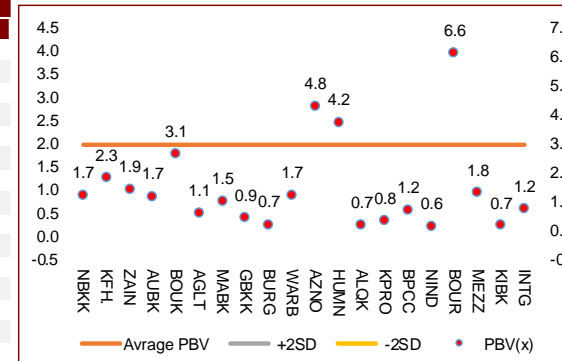


DAILY MARKET COVERAGE REPORT

NIC MENA SECURITIES - RESEARCH AND STUDIES DEP



Premier Market	Price			Valuation Multiples			MKT Cap	Price Performance		ROE	ROA
Company	Close (KD)	Day Δ	Day % Δ	PBV(X)	PE(X)	DY%	Mn KD	MTD(%)	YTD (%)	(%)	(%)
National Bank of Kuwait	0.865	-0.001	-0.12%	1.71	14.6	3.6%	5,874	0.6%	-15.1%	11.7%	1.4%
Kuwait Finance House	0.629	0.003	0.48%	2.32	19.0	2.6%	4,773	0.3%	-14.8%	12.2%	1.3%
Mobile Telecommunications	0.577	-0.001	-0.17%	1.92	11.5	5.4%	2,497	-2.5%	-4.2%	16.7%	4.6%
Ahli United Bank BSC	0.222	0.001	0.45%	1.67	9.8	5.5%	2,143	-4.7%	-24.4%	17.1%	1.8%
Boubyan Bank	0.592	0.003	0.51%	3.12	28.6	1.1%	1,793	2.6%	-2.9%	10.9%	1.2%
Agility Public Warehousing	0.629	0.004	0.64%	1.09	13.9	2.9%	1,204	0.6%	-11.7%	7.9%	4.2%
Mabane Co.	0.644	0.006	0.94%	1.50	12.6	1.6%	712	1.1%	-24.6%	11.9%	5.8%
Gulf Bank	0.214	0.001	0.47%	0.94	9.8	4.7%	622	0.5%	-29.4%	9.6%	1.0%
Burgan Bank	0.201	0.001	0.50%	0.70	6.2	5.7%	527	2.0%	-33.6%	11.3%	1.2%
Warba Bank	0.238	0.011	4.85%	1.72	22.7	0.0%	375	20.1%	-8.7%	7.6%	0.5%
Shamal Az-Zour Al-Oula Power & Water	0.334	0.009	2.77%	4.80	29.9	0.0%	367	4.4%	0.0%	16.1%	2.3%
Human Soft Holding	2.788	0.017	0.61%	4.22	9.5	6.6%	339	10.6%	-7.2%	44.6%	30.3%
Qurain Petrochemical Industries	0.275	0.004	1.48%	0.67	9.9	5.6%	281	-3.9%	-11.6%	6.7%	3.6%
Kuwait Projects Company Holding	0.151	0.001	0.67%	0.81	9.1	6.1%	274	1.3%	-30.1%	8.9%	0.3%
Boubyan Petrochemical	0.528	-0.006	-1.12%	1.19	22.5	9.8%	266	-1.1%	-20.7%	5.3%	2.1%
National Industries Group Holding	0.168	0.000	0.00%	0.63	5.2	6.4%	240	7.7%	-30.3%	12.3%	3.7%
Boursa Kuwait Securities Co	1.055	0.000	0.00%	6.60	22.1	0.0%	212	0.0%	0.0%	29.9%	26.5%
Mezzan Holding	0.620	-0.001	-0.16%	1.79	33.5	2.7%	189	-4.6%	24.0%	5.3%	2.2%
Kuwait International Bank	0.182	0.006	3.41%	0.66	10.8	5.5%	186	6.4%	-29.9%	6.1%	0.6%
Integrated Holding	0.381	-0.002	-0.52%	1.22	10.6	10.5%	84	8.9%	-30.9%	11.5%	8.5%
Total	22.69	0.39%	1.66	13.80	3.64%	22,956	0.3%	-15.8%	12.01%	1.56%	



Premier Market	Price			Moving Average		RSI	MKT Cap	Price Performance		52 Week (KD)	
Description	Close (KD)	Day Δ	Day % Δ	50 Day	200 Day	14 Day	Mn KD	MTD(%)	YTD (%)	High	Low
Premier Index	5,877	22.69	0.39%	5,636	5,903	68	22,956	0.3%	-15.8%	7,172	4,499

Top 5 Performrs (Today's Price Change)

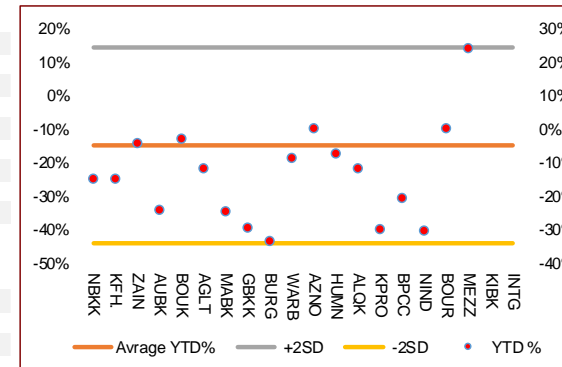
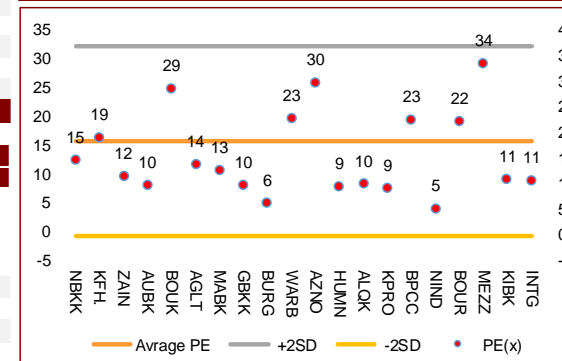
Warba Bank	0.238	0.011	4.85%	0.202	0.221	75	375	20.1%	-8.7%	0.279	0.164
Kuwait International Bank	0.182	0.006	3.41%	0.172	0.208	69	186	6.4%	-29.9%	0.270	0.162
Shamal Az-Zour Al-Oula Power & Water	0.334	0.009	2.77%	0.132	0.033	47	367	4.4%	0.0%	0.500	0.297
Qurain Petrochemical Industries	0.275	0.004	1.48%	0.283	0.269	18	281	-3.9%	-11.6%	0.341	0.163
Mabane Co.	0.644	0.006	0.94%	0.636	0.686	48	712	1.1%	-24.6%	0.877	0.434

Middle Performrs (Today's Price Change)

Kuwait Projects Company Holding	0.151	0.001	0.67%	0.153	0.181	50	274	1.3%	-30.1%	0.230	0.147
Agility Public Warehousing	0.629	0.004	0.64%	0.636	0.613	62	1,204	0.6%	-11.7%	0.748	0.357
Human Soft Holding	2.788	0.017	0.61%	2.679	2.814	72	339	10.6%	-7.2%	3.470	1.944
Boubyan Bank	0.592	0.003	0.51%	0.550	0.540	81	1,793	2.6%	-2.9%	0.638	0.380
Burgan Bank	0.201	0.001	0.50%	0.192	0.236	64	527	2.0%	-33.6%	0.332	0.175
Kuwait Finance House	0.629	0.003	0.48%	0.606	0.638	62	4,773	0.3%	-14.8%	0.761	0.473
Gulf Bank	0.214	0.001	0.47%	0.207	0.240	54	622	0.5%	-29.4%	0.317	0.180
Ahli United Bank BSC	0.222	0.001	0.45%	0.203	0.228	48	2,143	-4.7%	-24.4%	0.311	0.160
National Industries Group Holding	0.168	0.000	0.00%	0.160	0.188	75	240	7.7%	-30.3%	0.247	0.121
Boursa Kuwait Securities Co	1.055	0.000	0.00%	0.100	0.100	50	212	0.0%	0.0%	1.210	0.996

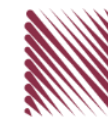
Bottom 5 Performrs (Today's Price Change)

Boubyan Petrochemical	0.528	-0.006	-1.12%	0.568	0.585	44	266	-1.1%	-20.7%	0.800	0.395
Integrated Holding	0.381	-0.002	-0.52%	0.381	0.455	75	84	8.9%	-30.9%	0.600	0.342
Mobile Telecommunications	0.577	-0.001	-0.17%	0.565	0.548	39	2,497	-2.5%	-4.2%	0.604	0.407
Mezzan Holding	0.620	-0.001	-0.16%	0.607	0.553	42	189	-4.6%	24.0%	0.665	0.428
National Bank of Kuwait	0.865	-0.001	-0.12%	0.820	0.853	71	5,874	0.6%	-15.1%	1.062	0.654



DAILY MARKET COVERAGE REPORT

NIC MENA SECURITIES - RESEARCH AND STUDIES DEP



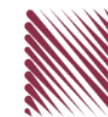
Banking Sector	Price			Valuation Multiples			MKT Cap	Price Performance		Trading Indicators		ROE	ROA	52 Week (KD)	
	Company	Close (KD)	Day Δ	Day % Δ	PBV(X)	PE(X)		DY%	Mn KD	MTD(%)	YTD (%)			Value (Mn KD)	(Mn Shrs)
National Bank of Kuwait	0.865	-0.001	-0.12%	1.71	14.64	3.6%	5,874	1%	-15%	3.74	4.30	11.7%	1.4%	1.062	0.654
Kuwait Finance House	0.629	0.003	0.48%	2.32	19.02	2.6%	4,773	0%	-15%	5.29	8.44	12.2%	1.3%	0.761	0.473
Ahli United Bank BSC	0.222	0.001	0.45%	1.67	9.78	5.5%	2,143	-5%	-24%	2.05	9.24	17.1%	1.8%	0.311	0.160
Boubyan Bank	0.592	0.003	0.51%	3.12	28.61	1.1%	1,793	3%	-3%	0.86	1.46	10.9%	1.2%	0.638	0.380
Commercial Bank of Kuwait	0.500	0.000	0.00%	1.32	0.00	3.7%	965	0%	-5%	0.00	0.00	0.0%	0.0%	0.555	0.465
Gulf Bank	0.214	0.001	0.47%	0.94	9.77	4.7%	622	0%	-29%	5.24	24.54	9.6%	1.0%	0.317	0.180
Ahli United Bank	0.284	0.004	1.43%	1.22	10.07	4.8%	554	10%	-12%	0.17	0.61	12.1%	1.3%	0.330	0.225
Burgan Bank	0.201	0.001	0.50%	0.70	6.22	5.7%	527	2%	-34%	0.17	0.86	11.3%	1.2%	0.332	0.175
Warba Bank	0.238	0.011	4.85%	1.72	22.67	0.0%	375	20%	-9%	8.60	36.13	7.6%	0.5%	0.279	0.164
Al Ahli Bank of Kuwait	0.180	0.002	1.12%	0.52	10.08	7.8%	289	5%	-30%	0.10	0.54	5.1%	0.6%	0.310	0.156
Kuwait International Bank	0.182	0.006	3.41%	0.66	10.82	5.5%	186	6%	-30%	4.14	23.02	6.1%	0.6%	0.270	0.162
Total Banking Sector - 11 Companies				1.64	15.09	3.5%	18,100			30.36	109.15	10.90%	1.21%		

Basic materials	Price			Valuation Multiples			MKT Cap	Price Performance		Trading Indicators		ROE	ROA	52 Week (KD)	
	Company	Close (KD)	Day Δ	Day % Δ	PBV(X)	PE(X)		DY%	Mn KD	MTD(%)	YTD (%)			Value (Mn KD)	(Mn Shrs)
Qurain Petrochemical Industries	0.275	0.004	1.48%	0.67	9.95	5.6%	281	-4%	-12%	0.19	0.70	6.7%	3.6%	0.341	0.163
Boubyan Petrochemical	0.528	-0.006	-1.12%	1.19	22.53	9.8%	266	-1%	-21%	0.19	0.35	5.3%	2.1%	0.800	0.395
Al Kout Industrial Projects	0.769	0.000	0.00%	2.50	16.21	6.5%	78	0%	-10%	0.00	0.00	15.4%	11.3%	0.850	0.769
Kuwait Foundry	0.238	-0.007	-2.86%	0.80	19.23	22.4%	17	1%	-28%	0.00	0.02	4.1%	3.8%	0.510	0.192
Total Basic materials - 4 Companies				0.92	14.04	7.9%	642			0.38	1.07	6.57%	5.07%		

Consumer goods	Price			Valuation Multiples			MKT Cap	Price Performance		Trading Indicators		ROE	ROA	52 Week (KD)	
	Company	Close (KD)	Day Δ	Day % Δ	PBV(X)	PE(X)		DY%	Mn KD	MTD(%)	YTD (%)			Value (Mn KD)	(Mn Shrs)
Mezzan Holding	0.620	-0.001	-0.16%	1.79	33.50	2.7%	189	-5%	24%	0.31	0.50	5.3%	2.2%	0.665	0.428
Livestock Transport and Trading	0.182	-0.002	-1.09%	0.95	32.44	0.1%	38	-2%	4%	0.00	0.02	2.9%	2.0%	0.200	0.152
Danah Al Safat Foodstuff	0.012	0.000	0.00%	0.25	(0.30)	0.1%	1	0%	-25%	0.00	0.00	-84.8%	-43.2%	0.029	0.010
Total Basic materials - 3 Companies				1.51	92.44	2.2%	228			0.31	0.52	1.64%	0.90%		

DAILY MARKET COVERAGE REPORT

NIC MENA SECURITIES - RESEARCH AND STUDIES DEP



Consumer services	Price			Valuation Multiples			MKT Cap	Price Performance		Trading Indicators		ROE	ROA	52 Week (KD)	
Company	Close (KD)	Day Δ	Day % Δ	PBV(X)	PE(X)	DY%	Mn KD	MTD(%)	YTD (%)	Value (Mn KD)	(Mn Shrs)	(%)	(%)	High	Low
Jazeera Airways	0.582	0.005	0.87%	2.89	7.79	6.0%	116	4%	-47%	0.30	0.52	37.1%	9.0%	1.110	0.372
Kuwait National Cinema	0.670	0.000	0.00%	0.77	7.25	7.2%	62	0%	-36%	0.02	0.03	10.6%	7.2%	1.050	0.600
Oula Fuel Marketing	0.111	0.001	0.91%	0.67	11.62	5.3%	45	0%	-13%	0.00	0.02	5.7%	3.2%	0.134	0.095
Al Soor Fuel Marketing	0.109	0.000	0.00%	0.67	12.76	4.5%	44	-1%	-13%	0.00	0.01	5.3%	3.7%	0.129	0.096
Sultan Center Food Products	0.055	-0.001	-0.91%	0.68	13.71	0.0%	31	-1%	5%	0.00	0.01	4.9%	0.7%	0.060	0.036
IFA Hotels and Resorts	0.024	0.000	0.00%	0.84	(0.64)	0.0%	14	-8%	-58%	0.00	0.06	-131.5%	-8.1%	0.062	0.021
Jiyad Holding	0.041	0.000	0.99%	0.37	8.18	0.0%	14	24%	4%	0.03	0.74	4.5%	2.8%	0.047	0.029
Kuwait Resorts	0.049	0.001	2.94%	0.34	8.90	0.0%	9	7%	-15%	0.16	3.30	3.8%	3.2%	0.060	0.038
Alrai Media Group	0.037	0.000	0.00%	0.83	(2.41)	0.0%	9	0%	-2%	0.00	0.00	-34.2%	-20.0%	0.045	0.031
Future Kid Entertainment and Real Estate	0.077	0.000	0.00%	0.44	28.90	15.1%	8	0%	-13%	0.00	0.00	1.5%	0.9%	0.110	0.069
Al Eid Food	0.074	0.003	3.64%	0.41	4.92	0.0%	7	11%	-6%	0.00	0.03	8.4%	6.1%	0.096	0.046
Kuwait Hotels	0.086	0.000	0.00%	1.21	(4.97)	0.0%	5	-2%	-14%	0.00	0.00	-24.4%	-13.2%	0.101	0.069
Palms Agro Production	0.060	0.000	0.00%	0.51	(42.30)	16.6%	3	6%	49%	0.00	0.01	-1.2%	-0.9%	0.062	0.025
Kuwait Cable Vision	0.014	0.000	0.00%	0.52	(11.65)	0.0%	1	0%	0%	0.00	0.00	-4.5%	-3.0%	0.026	0.012
Total Consumer services - 14 Companies				0.84	35.07	4.8%	369			0.52	4.74	2.38%	2.72%		

Financial services	Price			Valuation Multiples			MKT Cap	Price Performance		Trading Indicators		ROE	ROA	52 Week (KD)	
Company	Close (KD)	Day Δ	Day % Δ	PBV(X)	PE(X)	DY%	Mn KD	MTD(%)	YTD (%)	Value (Mn KD)	(Mn Shrs)	(%)	(%)	High	Low
Egypt Kuwait Holding	0.370	0.000	0.00%	2.19	12.49	5.3%	379	-1%	-18%	0.00	0.00	17.6%	7.1%	0.500	0.318
Kuwait Projects Company Holding	0.151	0.001	0.67%	0.81	9.12	6.1%	274	1%	-30%	0.62	4.12	8.9%	0.3%	0.230	0.147
National Industries Group Holding	0.168	0.000	0.00%	0.63	5.18	6.4%	240	8%	-30%	0.44	2.62	12.3%	3.7%	0.247	0.121
Boursa Kuwait Securities Co	1.055	0.000	0.00%	6.60	22.08	0.0%	212	0%	0%	9.37	8.71	29.9%	26.5%	0.996	1.210
GFH Financial Group	0.053	0.001	0.96%	0.57	7.16	5.4%	178	3%	-24%	0.03	0.53	8.0%	1.3%	0.074	0.042
Tamdeen Investment	0.321	-0.015	-4.46%	0.39	13.31	3.7%	110	29%	-7%	0.00	0.00	3.0%	2.2%	0.400	0.199
National Investments	0.136	-0.019	-12.26%	0.60	10.12	6.0%	109	14%	-1%	1.64	11.56	5.9%	5.0%	0.158	0.080
Alimtiq Investment Group	0.095	0.000	-0.11%	0.45	4.93	8.4%	97	10%	-25%	0.67	7.05	9.1%	5.2%	0.137	0.071
Commercial Facilities	0.185	0.000	0.00%	0.57	7.13	9.1%	94	1%	-15%	0.00	0.00	8.0%	4.2%	0.235	0.179
Aayan Leasing and Investment	0.090	-0.010	-10.13%	1.05	(4.91)	2.0%	72	55%	97%	4.54	48.33	-21.4%	-4.9%	0.102	0.032
Noor Financial Investment	0.176	0.008	4.76%	1.08	8.61	2.8%	70	9%	48%	0.43	2.54	12.5%	7.5%	0.184	0.076
Kuwait Investment	0.120	-0.002	-1.64%	0.52	3.76	8.4%	66	6%	-20%	0.20	1.62	13.9%	6.0%	0.172	0.095

DAILY MARKET COVERAGE REPORT

NIC MENA SECURITIES - RESEARCH AND STUDIES DEP



Financial services	Price			Valuation Multiples			MKT Cap	Price Performance		Trading Indicators		ROE	ROA	52 Week (KD)		
	Company	Close (KD)	Day Δ	Day % Δ	PBV(X)	PE(X)	DY%	Mn KD	MTD(%)	YTD (%)	Value (Mn KD)	(Mn Shrs)	(%)	(%)	High	Low
Arzan Financial Group for Financing and Invest	0.055	-0.002	-4.04%	0.44	39.77	0.0%	44	-7%	130%	1.46	26.93	1.1%	0.7%	0.064	0.022	
Gulf Investment House	0.099	0.003	2.82%	1.11	182.20	0.0%	40	6%	53%	0.28	2.94	0.6%	0.5%	0.100	0.038	
Al Bareeq Holding	0.088	0.000	0.00%	0.92	17.48	0.0%	38	-17%	-12%	0.00	0.00	5.2%	5.0%	0.110	0.088	
Kuwait Financial Centre	0.080	-0.001	-0.62%	0.40	5.47	6.2%	38	-1%	-25%	0.04	0.48	7.3%	3.5%	0.121	0.070	
Arabi Group Holdings	0.198	0.000	0.00%	1.07	(19.90)	0.0%	33	0%	-28%	0.00	0.00	-5.4%	-0.6%	0.337	0.079	
Kuwait and Middle East Financial Investment	0.119	-0.002	-1.65%	1.93	47.52	0.0%	31	3%	33%	0.04	0.35	4.1%	3.2%	0.138	0.063	
Umm Al Qaiwain General Investment Co	0.081	0.000	-0.49%	0.55	15.30	4.5%	30	-8%	22%	0.00	0.01	3.6%	3.3%	0.096	0.052	
Asiya Capital Investments	0.034	0.000	-0.58%	0.37	17.52	0.2%	26	10%	-17%	0.10	2.92	2.1%	2.0%	0.041	0.029	
Privatization Holding	0.043	0.001	1.67%	0.31	(38.32)	0.0%	26	1%	-14%	0.04	0.87	-0.8%	-0.5%	0.059	0.037	
KAMCO Investment	0.073	-0.002	-2.03%	0.44	8.18	0.0%	25	4%	-19%	0.08	1.13	5.4%	2.3%	0.111	0.060	
Securities House	0.043	-0.001	-3.13%	0.59	(63.30)	0.0%	24	8%	-5%	0.09	2.06	-0.9%	-0.7%	0.050	0.027	
Inovent BSC Public	0.070	0.000	0.00%	0.49	9.39	8.4%	21	24%	10%	0.00	0.05	5.2%	2.9%	0.072	0.044	
Coast Investment and Development	0.035	0.001	1.44%	0.37	35.18	0.0%	21	4%	-12%	0.01	0.37	1.1%	1.0%	0.045	0.026	
Al Madar Finance and Investment	0.097	0.009	10.73%	0.88	14.49	0.0%	20	15%	6%	0.67	7.12	6.1%	5.0%	0.148	0.062	
First Investment	0.030	-0.001	-2.62%	0.46	(0.41)	0.0%	19	0%	-13%	0.42	13.37	-113.6%	-62.0%	0.045	0.022	
Bayan Investment	0.047	0.000	0.00%	0.47	(24.29)	0.0%	17	-2%	23%	0.00	0.00	-1.9%	-0.8%	0.053	0.031	
Al Manar Financing and Leasing	0.049	0.000	0.00%	0.45	12.63	1.0%	15	5%	-5%	0.00	0.05	3.5%	2.7%	0.060	0.037	
Manazel Holding	0.033	0.000	1.21%	0.73	21.47	0.0%	14	2%	-15%	0.21	6.24	3.4%	0.8%	0.048	0.021	
Kuwait Finance and Investment	0.045	-0.001	-1.10%	0.36	20.21	0.0%	14	-2%	-11%	0.02	0.40	1.8%	1.2%	0.058	0.038	
National International Holding	0.062	-0.001	-1.59%	0.33	7.46	4.7%	13	2%	-15%	0.01	0.12	4.4%	3.3%	0.081	0.049	
Osoul Investment	0.082	0.002	2.11%	0.62	6.91	0.0%	13	-2%	10%	0.00	0.02	9.0%	8.2%	0.121	0.070	
Amar Finance and Leasing	0.053	0.000	0.00%	0.59	44.37	0.0%	10	3%	39%	0.00	0.00	1.3%	1.2%	0.064	0.037	
UniCap Investment and Finance	0.041	-0.001	-2.41%	0.41	(20.27)	0.0%	10	10%	-25%	0.02	0.46	-2.0%	-1.0%	0.057	0.035	
Gulf North Africa Holding	0.056	0.000	0.00%	0.75	72.41	0.0%	8	1%	-9%	0.00	0.00	1.0%	0.6%	0.062	0.052	
Al Salam Group Holding	0.029	0.000	-1.37%	0.25	217.42	0.0%	8	24%	-2%	0.30	10.45	0.1%	0.1%	0.033	0.018	
International Financial Advisors	0.031	0.000	0.00%	0.93	(0.42)	2.1%	8	0%	-42%	0.00	0.00	-222.8%	-19.3%	0.060	0.027	
Amwal International Investment	0.034	0.000	0.00%	0.64	12.68	0.0%	6	-5%	14%	0.00	0.00	5.0%	2.6%	0.055	0.030	
Al Madina for Finance and Investment	0.014	0.000	-2.05%	0.48	(2.69)	0.0%	6	34%	-5%	0.06	4.40	-17.9%	-7.7%	0.019	0.009	
Credit Rating and Collection	0.031	-0.001	-3.13%	0.95	(20.86)	0.0%	5	-12%	55%	0.00	0.00	-4.6%	-4.3%	0.035	0.019	
Ekttitab Holding	0.016	0.000	0.00%	0.38	(11.27)	0.0%	5	23%	5%	0.02	1.23	-3.4%	-3.0%	0.017	0.010	
Warba Capital Holding	0.047	0.000	0.00%	0.52	(7.48)	0.0%	5	-6%	-27%	0.00	0.00	-7.0%	-6.2%	0.115	0.045	
National Consumer Holding	0.051	0.000	0.00%	0.57	252.38	0.0%	5	-6%	-7%	0.00	0.00	0.2%	0.2%	0.100	0.010	
Kuwait Syrian Holding Co	0.026	0.000	0.00%	0.22	(13.03)	0.0%	4	-4%	-19%	0.00	0.01	-1.7%	-1.1%	0.043	0.022	
Al Deera Holding	0.016	0.000	0.00%	0.70	(9.02)	0.0%	3	0%	-20%	0.00	0.00	-7.7%	-1.7%	0.022	0.011	
Al Mal Investment Company	0.010	0.000	2.15%	0.42	(0.89)	0.0%	3	4%	-5%	0.02	1.85	-47.6%	-23.3%	0.016	0.008	
Gulf Franchising Holding	0.050	0.000	0.00%	0.79	(2.18)	0.0%	2	-14%	-33%	0.00	0.00	-36.2%	-10.8%	0.160	0.001	
Tamkeen Holding	0.005	0.000	0.00%	0.05	(7.18)	0.0%	0	0%	0%	0.00	0.00	-0.7%	-0.7%	0.005	0.005	
Total Financial services - 49 Companies				0.72	16.24	4.2%	2,508				21.84	170.91	4.42%	4.14%		

DAILY MARKET COVERAGE REPORT

NIC MENA SECURITIES - RESEARCH AND STUDIES DEP



Health care	Price			Valuation Multiples			MKT Cap	Price Performance		Trading Indicators		ROE	ROA	52 Week (KD)	
Company	Close (KD)	Day Δ	Day % Δ	PBV(X)	PE(X)	DY%	Mn KD	MTD(%)	YTD (%)	Value (Mn KD)	(Mn Shrs)	(%)	(%)	High	Low
Al-Maidan Clinic for Oral Health Services	1.220	0.000	0.00%	7.90	47.78	0.6%	305	0%	0%	0.00	0.00	16.5%	10.9%	1.240	1.220
Advanced Technology	0.627	0.000	0.00%	1.63	51.04	2.4%	94	0%	-23%	0.00	0.00	3.2%	0.7%	0.900	0.580
Yiaco Medical	0.707	0.000	0.00%	6.06	52.72	0.0%	12	0%	0%	0.00	0.00	11.5%	0.6%	0.707	0.707
Total Health care - 3 Companies				4.19	48.62	1.0%	411			0.00	0.00	8.61%	4.68%		

Industrials	Price			Valuation Multiples			MKT Cap	Price Performance		Trading Indicators		ROE	ROA	52 Week (KD)	
Company	Close (KD)	Day Δ	Day % Δ	PBV(X)	PE(X)	DY%	Mn KD	MTD(%)	YTD (%)	Value (Mn KD)	(Mn Shrs)	(%)	(%)	High	Low
Agility Public Warehousing	0.629	0.004	0.64%	1.09	13.87	2.9%	1,204	1%	-12%	0.94	1.51	7.9%	4.2%	0.748	0.357
Human Soft Holding	2.788	0.017	0.61%	4.22	9.45	6.6%	339	11%	-7%	0.63	0.23	44.6%	30.3%	3.470	1.944
ALAFCO Aviation Lease and Finance	0.160	0.002	1.27%	0.48	8.61	6.3%	152	2%	-41%	0.40	2.52	5.5%	1.4%	0.278	0.138
Gulf Cable and Electrical Industries	0.709	-0.026	-3.54%	0.85	35.16	3.9%	149	8%	43%	1.42	2.01	2.4%	2.2%	0.742	0.390
Kuwait Cement	0.192	0.011	6.08%	0.65	34.08	7.7%	137	10%	-22%	0.45	2.38	1.9%	1.3%	0.271	0.144
Integrated Holding	0.381	-0.002	-0.52%	1.22	10.61	10.5%	84	9%	-31%	0.12	0.31	11.5%	8.5%	0.600	0.342
Kuwait Portland Cement	0.764	0.003	0.39%	1.03	10.09	12.9%	77	5%	-22%	0.02	0.02	10.2%	8.2%	1.208	0.683
United Projects for Aviation Services	0.465	0.000	0.00%	0.98	7.96	4.5%	74	0%	-9%	0.00	0.00	12.3%	7.8%	0.512	0.367
Educational Holding Group	0.300	0.000	0.00%	1.74	9.50	5.0%	74	0%	-32%	0.00	0.01	18.3%	16.7%	0.475	0.228
Heavy Engineering Industries and Shipbuilding	0.373	0.000	0.00%	1.08	5.99	7.8%	67	2%	-8%	0.01	0.02	18.0%	5.9%	0.419	0.298
National Industries	0.150	-0.005	-3.23%	0.62	12.23	6.6%	52	-9%	-9%	0.00	0.02	5.1%	3.8%	0.173	0.143
ACICO Industries	0.106	0.000	0.00%	0.34	13.80	4.7%	35	13%	-20%	0.01	0.09	2.5%	0.6%	0.144	0.081
Kuwait Company for Process Plant Constructi	0.314	-0.003	-0.95%	1.24	6.73	5.7%	33	1%	30%	0.02	0.07	18.5%	7.7%	0.337	0.175
Ras Al Khaimah for White Cement and Constr	0.065	0.000	0.00%	0.51	19.94	8.4%	33	0%	0%	0.00	0.00	2.6%	2.0%	0.080	0.053
Gulf Cement	0.032	0.000	0.31%	0.32	(11.74)	12.9%	26	13%	-38%	0.02	0.55	-2.7%	-2.2%	0.062	0.029
Sharjah Cement and Industrial Development	0.042	0.000	0.00%	0.21	25.32	12.4%	26	0%	0%	0.00	0.00	0.8%	0.6%	0.064	0.042
Combined Group Contracting	0.157	0.000	0.00%	0.55	7.07	13.1%	26	1%	-37%	0.18	1.14	7.7%	1.2%	0.251	0.138
KGL Logistics	0.027	0.000	0.00%	0.20	4.45	0.1%	21	10%	-27%	0.00	0.00	4.6%	2.9%	0.043	0.023
Shuaiba Industrial	0.130	0.000	0.00%	0.72	40.15	7.6%	13	5%	-16%	0.00	0.00	1.8%	1.4%	0.180	0.122
Kuwait and Gulf Link Transport	0.044	-0.001	-1.33%	0.18	13.43	0.0%	12	0%	-32%	0.08	1.79	1.4%	0.4%	0.078	0.042
Fujairah Cement Industries	0.033	0.000	-0.30%	0.14	16.15	12.6%	12	6%	-26%	0.00	0.15	0.8%	0.4%	0.052	0.029
National Cleaning	0.054	0.001	0.93%	0.32	7.23	9.4%	11	4%	-22%	0.00	0.01	4.4%	1.5%	0.088	0.047
Mubarrad Holding	0.064	0.002	3.24%	0.50	10.28	7.4%	10	14%	-28%	0.33	5.18	4.9%	4.1%	0.089	0.049
Hilal Cement	0.100	0.000	0.00%	0.87	(8.18)	15.1%	10	-13%	0%	0.00	0.00	-10.6%	-6.2%	0.126	0.063
Specialities Group Holding	0.062	0.001	1.65%	0.33	7.31	0.0%	10	3%	-20%	0.02	0.31	4.5%	3.5%	0.078	0.050
National Ranges	0.015	-0.001	-4.38%	0.28	(1.12)	0.0%	4	-4%	53%	0.04	2.82	-24.9%	-5.3%	0.018	0.007
Metal and Recycling	0.041	0.000	0.00%	0.34	(1.73)	0.0%	4	-6%	-18%	0.00	0.00	-19.7%	-10.1%	0.070	0.020
Salbookh Trading	0.036	0.001	3.48%	0.48	(2.09)	0.0%	4	30%	-29%	0.01	0.24	-23.2%	-15.9%	0.051	0.026
Equipment Holding	0.018	0.000	0.00%	0.36	(205.55)	0.0%	2	20%	-19%	0.00	0.00	-0.2%	-0.1%	0.024	0.013
Total Industrials - 29 Companies				0.86	12.87	5.2%	2,701			4.70	21.37	6.67%	5.05%		

DAILY MARKET COVERAGE REPORT

NIC MENA SECURITIES - RESEARCH AND STUDIES DEP



Insurance	Price			Valuation Multiples			MKT Cap	Price Performance		Trading Indicators		ROE	ROA	52 Week (KD)	
Company	Close (KD)	Day Δ	Day % Δ	PBV(X)	PE(X)	DY%	Mn KD	MTD(%)	YTD (%)	Value (Mn KD)	(Mn Shrs)	(%)	(%)	High	Low
Gulf Insurance Group	0.602	-0.003	-0.50%	1.03	8.40	6.2%	112	-2%	-9%	0.00	0.00	12.3%	1.7%	0.680	0.550
Al Ahleia Insurance	0.410	0.000	0.00%	0.77	8.26	8.2%	85	7%	1%	0.00	0.00	9.4%	3.3%	0.424	0.367
Kuwait Insurance	0.370	0.000	0.00%	0.61	7.17	6.4%	68	6%	12%	0.00	0.00	8.5%	4.6%	0.387	0.300
Kuwait Reinsurance	0.211	0.000	0.00%	0.80	9.03	2.1%	43	8%	53%	0.00	0.00	8.9%	3.2%	0.211	0.126
Bahrain Kuwait Insurance	0.200	0.000	0.00%	0.93	12.87	6.1%	28	0%	0%	0.00	0.00	7.2%	1.1%	0.200	0.200
Warba Insurance	0.079	0.004	5.50%	0.34	11.16	0.0%	13	0%	30%	0.00	0.02	3.1%	1.0%	0.094	0.051
First Takaful Insurance	0.040	0.000	0.00%	0.48	5.04	0.0%	4	0%	4%	0.00	0.00	9.6%	5.9%	0.056	0.031
Wethaq Takaful Insurance	0.023	-0.001	-3.72%	0.21	(29.49)	0.0%	3	-3%	-7%	0.01	0.28	-0.7%	-0.7%	0.035	0.018
Total Insurance - 8 Companies				0.75	8.48	5.9%	356			0.01	0.31	8.86%	3.00%		

Oil and Gas	Price			Valuation Multiples			MKT Cap	Price Performance		Trading Indicators		ROE	ROA	52 Week (KD)	
Company	Close (KD)	Day Δ	Day % Δ	PBV(X)	PE(X)	DY%	Mn KD	MTD(%)	YTD (%)	Value (Mn KD)	(Mn Shrs)	(%)	(%)	High	Low
National Petroleum Services	1.060	0.000	0.00%	2.52	9.04	6.6%	103	6%	-9%	0.00	0.00	27.9%	23.6%	1.389	0.903
Independent Petroleum Group	0.430	0.000	0.00%	0.79	11.72	7.0%	78	-4%	-11%	0.00	0.00	6.8%	2.2%	0.497	0.375
Burgan for Well Drilling Trading and Maintenanc	0.078	-0.005	-5.68%	0.28	7.92	0.0%	18	3%	-11%	0.00	0.00	3.6%	1.1%	0.098	0.060
Energy House Holding	0.022	0.000	0.00%	0.68	(3.00)	0.0%	16	10%	-4%	0.00	0.00	-22.5%	-17.0%	0.036	0.014
Gulf Petroleum Investment	0.022	0.000	0.47%	0.24	(6.93)	0.0%	10	11%	7%	0.39	18.21	-3.4%	-2.3%	0.024	0.012
Senergy Holding	0.020	0.002	8.33%	0.39	(0.82)	0.0%	4	18%	-13%	0.06	2.93	-47.9%	-30.4%	0.027	0.014
Total Oil and Gas - 6 Companies				0.82	26.54	5.3%	229			0.45	21.15	3.10%	2.18%		

Real estate	Price			Valuation Multiples			MKT Cap	Price Performance		Trading Indicators		ROE	ROA	52 Week (KD)	
Company	Close (KD)	Day Δ	Day % Δ	PBV(X)	PE(X)	DY%	Mn KD	MTD(%)	YTD (%)	Value (Mn KD)	(Mn Shrs)	(%)	(%)	High	Low
Mabane Co.	0.644	0.006	0.94%	1.50	12.62	1.6%	712	1%	-25%	0.37	0.57	11.9%	5.8%	0.877	0.434
Commercial Real Estate	0.109	0.012	12.37%	0.67	13.50	5.2%	197	12%	14%	0.75	7.27	5.0%	2.7%	0.103	0.083
Salhia Real Estate	0.397	0.002	0.51%	1.20	9.12	5.0%	196	-1%	-6%	0.08	0.21	13.2%	5.8%	0.460	0.324
National Real Estate	0.073	0.001	1.25%	0.40	9.61	0.0%	110	4%	-16%	0.07	0.94	4.2%	2.4%	0.090	0.058
Tamdeen Real Estate	0.248	0.000	0.00%	0.36	12.10	4.1%	100	-1%	-23%	0.00	0.01	3.0%	2.2%	0.343	0.241
Kuwait Real Estate	0.099	0.002	1.64%	0.69	12.58	0.4%	89	6%	-5%	0.22	2.24	5.5%	2.2%	0.115	0.070
United Real Estate	0.052	0.000	0.00%	0.30	(7.76)	0.0%	56	4%	-15%	0.00	0.02	-3.9%	-1.2%	0.063	0.045
First Dubai for Real Estate Development	0.041	-0.001	-1.22%	0.54	44.41	1.0%	40	5%	13%	0.05	1.13	1.2%	1.0%	0.055	0.027
Al Mazaya Holding	0.054	0.000	0.00%	0.43	(3.89)	0.1%	34	7%	-8%	0.03	0.49	-11.0%	-3.8%	0.067	0.047
Ajial Real Estate Entertainment	0.139	0.002	1.46%	0.22	13.43	0.0%	27	5%	-19%	0.00	0.02	1.6%	1.4%	0.213	0.115
Injazzat Real Estate Development	0.077	0.000	0.00%	0.49	(3.69)	9.0%	26	4%	-4%	0.00	0.00	-13.4%	-7.0%	0.091	0.061

DAILY MARKET COVERAGE REPORT

NIC MENA SECURITIES - RESEARCH AND STUDIES DEP



Real estate Company	Price			Valuation Multiples			MKT Cap Mn KD	Price Performance		Trading Indicators		ROE (%)	ROA (%)	52 Week (KD)	
	Close (KD)	Day Δ	Day % Δ	PBV(X)	PE(X)	DY%		MTD(%)	YTD (%)	Value (Mn KD)	(Mn Shrs)			High	Low
Aayan Real Estate	0.060	-0.003	-4.46%	0.35	11.74	8.0%	25	17%	-18%	0.11	1.84	3.0%	1.9%	0.080	0.048
Ream Real Estate	0.204	0.000	0.00%	1.56	(8.21)	1.1%	22	0%	132%	0.00	0.00	-19.0%	-10.1%	0.204	0.060
Arkan Al Kuwait Real Estate	0.086	0.000	0.00%	0.61	9.26	9.1%	21	2%	-4%	0.00	0.00	6.6%	3.5%	0.100	0.076
Al Argan International Real Estate	0.083	0.000	0.00%	0.24	26.93	5.9%	21	-5%	-21%	0.00	0.00	0.9%	0.3%	0.141	0.060
Munshaat Real Estate Projects	0.065	0.000	0.00%	0.44	23.96	3.3%	21	30%	-12%	0.00	0.00	1.8%	0.7%	0.085	0.045
Al-Enmaa Real Estate	0.046	0.000	0.00%	0.46	12.16	0.0%	21	6%	-27%	0.09	2.02	3.8%	2.4%	0.079	0.037
Dalqan Real Estate	0.350	0.000	0.00%	2.91	59.01	0.0%	19	0%	0%	0.00	0.00	4.9%	4.9%	0.350	0.350
Dar Al Thuraya Real Estate	0.125	0.011	9.65%	1.19	32.95	0.0%	18	-2%	78%	0.00	0.00	3.6%	3.6%	0.190	0.040
Kuwait Business Town Real Estate	0.026	0.000	1.56%	0.24	6.64	0.3%	16	9%	-41%	0.05	1.82	3.6%	2.7%	0.046	0.022
Sokouk Holding	0.027	0.000	0.38%	0.33	(4.43)	0.0%	15	15%	-24%	0.01	0.30	-7.4%	-4.7%	0.040	0.022
Tijara and Realestate Investment	0.040	0.000	-0.75%	0.37	10.42	5.0%	15	-6%	-21%	0.00	0.08	3.6%	1.9%	0.055	0.034
Investors Holding Group	0.022	0.000	-0.92%	1.09	(1.02)	0.0%	13	64%	175%	0.34	15.61	-106.5%	-57.2%	0.032	0.007
Al-Arabiya Real Estate	0.026	-0.001	-2.99%	0.23	7.88	2.4%	13	17%	-9%	0.03	1.13	2.9%	1.1%	0.033	0.020
Aqar Real Estate Investments	0.060	-0.004	-6.10%	0.43	5.01	8.3%	13	-8%	-25%	0.01	0.12	8.7%	7.3%	0.089	0.058
Mashaer Holding	0.060	0.002	2.55%	0.46	6.50	0.0%	11	11%	-22%	0.03	0.58	7.1%	5.0%	0.086	0.048
Osos Holding Group	0.095	0.000	0.00%	0.75	7.16	10.0%	10	0%	-5%	0.00	0.00	10.5%	7.0%	0.118	0.084
Abyaar Real Estate Development	0.008	0.000	-1.32%	0.22	(0.53)	0.0%	8	3%	-4%	0.02	2.71	-40.9%	-12.4%	0.014	0.005
Al Massaleh Real Estate	0.035	0.000	0.00%	0.39	(4.88)	0.0%	8	20%	-5%	0.00	0.00	-8.1%	-1.9%	0.040	0.026
Kuwait Remal Real Estate	0.020	-0.001	-5.29%	0.30	(2.71)	0.0%	6	45%	-14%	0.02	0.95	-11.0%	-3.9%	0.027	0.013
Taameer Real Estate Investment	0.021	0.000	-0.49%	0.30	(4.34)	0.0%	5	9%	-23%	0.05	2.35	-7.0%	-4.5%	0.034	0.013
Kuwait Real Estate Holding	0.024	-0.001	-3.23%	0.04	0.64	7.4%	5	-6%	-16%	0.00	0.07	5.5%	2.2%	0.034	0.022
Mena Real Estate	0.029	0.001	1.79%	0.20	(63.52)	0.0%	4	16%	-32%	0.10	3.48	-0.3%	-0.2%	0.043	0.021
Real Estate Trade Centers	0.029	0.002	8.52%	0.16	167.41	0.0%	4	11%	21%	0.04	1.53	0.1%	0.1%	0.050	0.018
Sanam Real Estate	0.030	0.000	0.00%	0.38	40.63	0.0%	4	0%	-25%	0.00	0.00	0.9%	0.9%	0.043	0.027
Al Masaken International Real Estate Developr	0.027	0.000	-0.37%	0.30	32.61	0.6%	3	-14%	-39%	0.00	0.01	0.9%	0.4%	0.074	0.027
Ajwan Gulf Real Estate	0.011	0.000	0.00%	0.19	(7.68)	0.0%	2	0%	-29%	0.00	0.00	-2.5%	-2.2%	0.016	0.009
Effect Real Estate	0.021	0.000	0.00%	0.29	(8.85)	4.9%	2	0%	0%	0.00	0.00	-3.3%	-3.2%	0.021	0.021
Al Mudon International Real Estate	0.016	0.000	0.00%	0.12	(8.22)	0.0%	2	0%	-35%	0.00	0.00	-1.5%	-1.4%	0.029	0.015
Total Real estate - 39 Companies				0.63	22.39	2.5%	1,913			2.48	47.50	2.79%	2.96%		

DAILY MARKET COVERAGE REPORT

NIC MENA SECURITIES - RESEARCH AND STUDIES DEP



Technology	Price			Valuation Multiples			MKT Cap	Price Performance		Trading Indicators		ROE	ROA	52 Week (KD)	
	Company	Close (KD)	Day Δ	Day % Δ	PBV(X)	PE(X)		DY%	Mn KD	MTD(%)	YTD (%)			Value (Mn KD)	(Mn Shrs)
Automated Systems	0.073	-0.002	-2.01%	0.57	(70.81)	5.5%	7	7%	3%	0.00	0.01	-0.8%	-0.7%	0.086	0.051
Total Technology - 1 Companies				0.57	(70.81)	5.5%	7			0.00	0.01	-0.81%	-0.73%		

Telecom	Price			Valuation Multiples			MKT Cap	Price Performance		Trading Indicators		ROE	ROA	52 Week (KD)	
	Company	Close (KD)	Day Δ	Day % Δ	PBV(X)	PE(X)		DY%	Mn KD	MTD(%)	YTD (%)			Value (Mn KD)	(Mn Shrs)
Mobile Telecommunications	0.577	-0.001	-0.17%	1.92	11.51	5.4%	2,497	-3%	-4%	1.62	2.82	16.7%	4.6%	0.604	0.407
Kuwait Telecommunications	0.855	0.000	0.00%	1.98	9.79	4.1%	427	1%	9%	0.02	0.03	20.2%	11.1%	0.870	0.680
National Mobile Telecommunications	0.602	-0.004	-0.66%	0.53	10.01	10.7%	302	4%	-27%	0.07	0.12	5.3%	2.4%	0.835	0.550
AAN Digital Services	0.013	-0.001	-3.68%	0.39	42.73	0.0%	11	25%	-4%	0.16	12.04	0.9%	0.7%	0.021	0.009
Hayat Communications	0.065	0.000	0.00%	0.55	27.54	0.0%	6	-21%	-13%	0.00	0.00	2.0%	0.8%	0.098	0.030
Telecom - 5 Companies				1.53	11.14	5.7%	3,242			1.88	15.01	13.70%	7.86%		

Utilities	Price			Valuation Multiples			MKT Cap	Price Performance		Trading Indicators		ROE	ROA	52 Week (KD)	
	Company	Close (KD)	Day Δ	Day % Δ	PBV(X)	PE(X)		DY%	Mn KD	MTD(%)	YTD (%)			Value (Mn KD)	(Mn Shrs)
Shamal Az-Zour Al-Oula Power & Water	0.334	0.009	2.77%	4.80	29.87	0.0%	367	4%	0%	2.46	7.51	16.1%	2.3%	0.500	0.297
Total Utilities - 1 Companies				4.80	29.87	0.0%	367			2.46	7.51	16.06%	2.26%		

Total Market 173 Companies				1.24	15.01	3.92%	31,074			65.41	399.26	8.26%	2.76%		
-----------------------------------	--	--	--	-------------	--------------	--------------	---------------	--	--	--------------	---------------	--------------	--------------	--	--

End of Report

The information contained in this document is proprietary to NIC and is for use only by the persons to whom it is issued. This document is confidential and may not be distributed either in part or in whole without the express agreement of NIC. It is intended solely for the use of the individual or entity to whom it is addressed and others authorized to receive it.

Note : ROE and ROA is calculated based on LTM net profit & shareholders' equity and LTM Operating Profits & Total Assets

Sources : National Investments Company Research and Studies Departments



شركة الاستثمار الوطنية
NATIONAL INVESTMENTS COMPANY

Sharq, Al Mutanabi Street, Khaleejia Tower | P.O. Box 25667, Safat 13117, Kuwait

T.: +965 2226 6666 | Fax: +965 2226 6793 | www.nic.com.kw