



شركة الاستثمارات الوطنية
NATIONAL INVESTMENTS COMPANY

Boursa Kuwait – Daily Market Report
MENA Securities – Research & Studies Dep.

Sunday, October 18, 2020

DAILY MARKET COVERAGE REPORT

NIC MENA SECURITIES - RESEARCH AND STUDIES DEP



Index	Close	DTD Chg Net	DTD (%)	YTD (%)	52W High	52W Low	MKT CAP Bn (KD)	PBV (X)	PE (X)	DY (%)
All Share Index	5,685.82	-49.41	-0.86%	-9.5%	6,416.43	4,339.58	32.95	1.31	15.91	3.70%
Premier Index	6,314.93	-62.52	-0.98%	-9.4%	7,172.32	4,498.65	24.66	1.78	14.82	3.39%
Main Index	4,435.14	-22.57	-0.51%	-9.8%	4,932.47	3,965.63	8.29	0.74	20.38	4.61%
NIC 50 Index	6,974.34	-57.55	-0.82%	-6.5%	7,517.86	5,014.61	28.37	1.56	15.44	3.51%

Index	Value Mn(KD)	Volume (Mn share)
All Share Index	50.01	333.53
Premier Index	38.49	81.32
Main Index	11.52	252.21
NIC 50 Index	46.57	212.57

Market Breadth	UP ↑	Down ↓	No Chg ↔
All Share Index	36	75	62
Premier Index	4	16	0
Main Index	32	59	62
NIC 50 Index	12	31	7

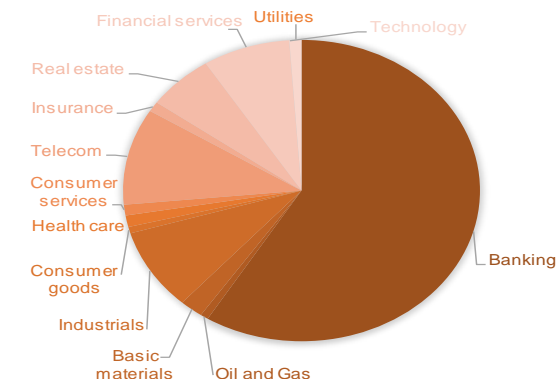
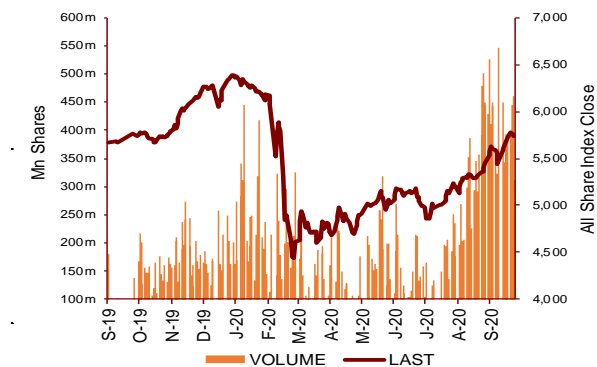
Today's Top 5 Gainer %	Close KD	Value KD	DTD (%)
Sanam Real Estate	0.031	31	9.82%
Al Madina for Finance and Inve	0.017	1,156,609	9.74%
Kuwait Finance and Investment	0.048	79,059	6.14%
Gulf Cement	0.034	9,821	5.20%
Dar Al Thuraya Real Estate	0.072	2,892	4.67%

Today's Top 5 Loser %	Close KD	Value KD	DTD (%)
Warba Bank	0.249	2,015,710	-5.68%
Kuwait Hotels	0.090	9	-4.95%
Metal and Recycling	0.037	156	-4.90%
IFA Hotels and Resorts	0.023	72,922	-4.60%
Tamdeen Real Estate	0.250	29,312	-4.21%

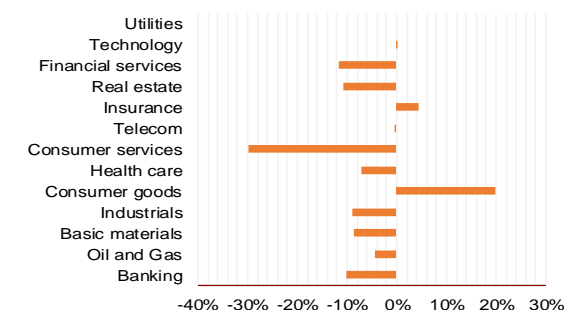
Today's Top 5 by Value	Close KD	Trade Val Mn(KD)	DTD (%)
Kuwait Finance House	0.697	14.06	-1.55%
National Bank of Kuwait	0.889	6.68	-0.11%
Mabane Co.	0.700	2.03	-3.85%
Warba Bank	0.249	2.02	-5.68%
Mobile Telecommunications	0.614	2.00	-0.32%

Top 5 by Volume	Close KD	Trade Vol Mn(Shrs)	DTD (%)
Al Madina for Finance and	0.017	69.87	9.74%
AAN Digital Services	0.013	21.99	0.00%
Kuwait Finance House	0.697	20.08	-1.55%
Al Salam Group Holding	0.030	18.01	1.01%
Alimtiq Investment Group	0.101	14.43	-3.81%

Sector	Close	DTD Chg Net	DTD (%)	YTD (%)	52W High	52W Low	MKT CAP Bn (KD)	PBV (X)	PE (X)	DY (%)
Banking	1,330.02	-13.970	-1.04%	-10.2%	1,536.8	986.4	19.38	1.76	16.15	3.3%
Oil and Gas	1,184.34	-6.300	-0.53%	-4.3%	1,372.2	985.7	0.24	0.86	27.72	5.1%
Basic materials	830.96	-4.190	-0.50%	-8.5%	980.7	561.7	0.70	1.00	15.28	7.2%
Industrials	846.15	-0.670	-0.08%	-9.0%	937.5	602.9	2.89	0.92	13.76	4.8%
Consumer goods	763.27	-4.080	-0.53%	19.8%	810.7	548.6	0.23	1.51	92.51	2.2%
Health care	821.04	0.000	0.00%	-7.2%	911.8	815.0	0.41	4.15	48.14	1.0%
Consumer services	750.72	-8.270	-1.09%	-29.9%	1,083.1	674.8	0.38	0.86	36.05	4.7%
Telecom	1,114.29	-2.990	-0.27%	-0.1%	1,134.2	802.2	3.41	1.61	11.73	5.4%
Insurance	996.38	-5.200	-0.52%	4.5%	1,068.3	901.0	0.36	0.75	8.46	5.9%
Real estate	945.38	-18.720	-1.94%	-10.7%	1,083.4	763.2	1.99	0.65	23.29	2.4%
Financial services	954.88	-7.640	-0.79%	-11.7%	1,097.0	801.4	2.61	0.75	16.88	4.0%
Technology	509.25	-10.190	-1.96%	0.3%	632.9	371.0	0.01	0.55	-67.90	5.7%
Utilities	860.53	2.640	0.31%	0.0%	1,042.1	781.6	0.36	4.69	29.24	0.0%
	5,685.82	-49.41	-0.86%	-9.5%	6,416.4	4,339.6	32.95	1.31	15.91	3.70%



YTD Sector Performance %



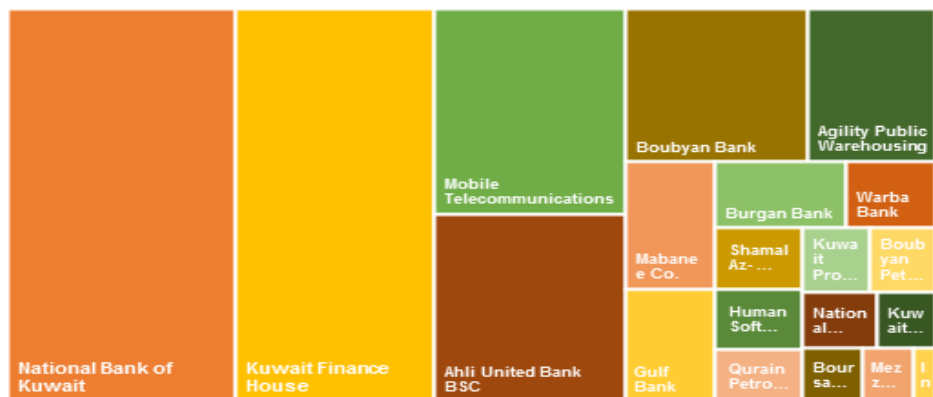
DAILY MARKET COVERAGE REPORT

NIC MENA SECURITIES - RESEARCH AND STUDIES DEP

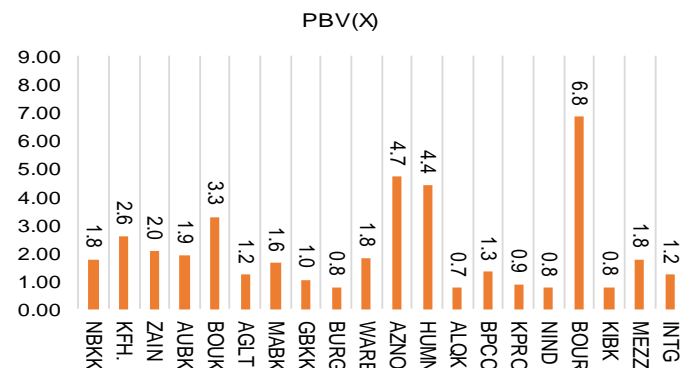


Premier Market	Price			Valuation Multiples			MKT Cap	Price Performance		Trading Indicators		ROE	ROA	52 Week (KD)		MKT Cap
	Close (KD)	Day Δ	Day % Δ	PBV(X)	PE(X)	DY%	Mn KD	MTD(%)	YTD (%)	Value (Mn KD)	(Mn Shrs)	(%)	(%)	High	Low	%
National Bank of Kuwait	0.889	-0.001	-0.11%	1.76	15.04	3.6%	6,037	2%	-13%	6.68	7.52	11.7%	1.4%	1.062	0.654	24.48%
Kuwait Finance House	0.697	-0.011	-1.55%	2.57	21.07	2.4%	5,289	6%	-5%	14.06	20.08	12.2%	1.3%	0.761	0.473	21.45%
Mobile Telecommunications	0.614	-0.002	-0.32%	2.05	12.25	5.1%	2,657	7%	3%	2.00	3.26	16.7%	4.6%	0.629	0.407	10.77%
Ahli United Bank BSC	0.251	-0.001	-0.40%	1.89	11.05	4.8%	2,423	7%	-15%	1.46	5.84	17.1%	1.8%	0.311	0.160	9.82%
Boubyan Bank	0.623	-0.014	-2.20%	3.28	30.11	1.0%	1,886	5%	2%	1.38	2.20	10.9%	1.2%	0.642	0.380	7.65%
Agility Public Warehousing	0.694	-0.001	-0.14%	1.21	15.31	2.6%	1,328	5%	-3%	1.19	1.71	7.9%	4.2%	0.748	0.357	5.38%
Mabane Co.	0.700	-0.028	-3.85%	1.64	13.71	1.5%	774	-4%	-18%	2.03	2.87	11.9%	5.8%	0.877	0.434	3.14%
Gulf Bank	0.239	-0.002	-0.83%	1.04	10.91	4.2%	694	9%	-21%	1.16	4.86	9.6%	1.0%	0.317	0.180	2.81%
Burgan Bank	0.221	-0.006	-2.64%	0.77	6.84	5.2%	579	9%	-27%	0.81	3.66	11.3%	1.2%	0.324	0.175	2.35%
Warba Bank	0.249	-0.015	-5.68%	1.80	23.71	0.0%	392	0%	-5%	2.02	7.87	7.6%	0.5%	0.279	0.164	1.59%
Shamal Az-Zour Al-Oula Power & Water	0.327	0.001	0.31%	4.69	29.24	0.0%	360	2%	0%	1.59	4.86	16.1%	2.3%	0.500	0.297	1.46%
Human Soft Holding	2.899	0.018	0.62%	4.39	9.83	6.3%	353	11%	-4%	0.29	0.10	44.6%	30.3%	3.470	1.944	1.43%
Qurain Petrochemical Industries	0.307	-0.005	-1.60%	0.75	11.11	5.0%	314	12%	-1%	0.15	0.48	6.7%	3.6%	0.323	0.163	1.27%
Boubyan Petrochemical	0.580	0.003	0.52%	1.31	24.74	8.9%	293	5%	-13%	0.10	0.18	5.3%	2.1%	0.779	0.395	1.19%
Kuwait Projects Company Holding	0.162	-0.002	-1.22%	0.87	9.78	5.7%	294	7%	-25%	0.26	1.59	8.9%	0.3%	0.225	0.147	1.19%
National Industries Group Holding	0.199	-0.002	-1.00%	0.75	6.13	5.4%	284	20%	-17%	0.90	4.52	12.3%	3.7%	0.247	0.121	1.15%
Boursa Kuwait Securities Co	1.091	-0.017	-1.53%	6.82	22.84	0.0%	219	-4%	0%	0.17	0.15	29.9%	26.5%	1.210	0.990	0.89%
Kuwait International Bank	0.215	-0.004	-1.83%	0.78	12.78	4.7%	219	16%	-17%	1.96	9.07	6.1%	0.6%	0.270	0.162	0.89%
Mezzan Holding	0.615	-0.004	-0.65%	1.77	33.23	2.7%	187	-1%	23%	0.21	0.33	5.3%	2.2%	0.665	0.428	0.76%
Integrated Holding	0.378	0.002	0.53%	1.21	10.53	10.6%	83	5%	-31%	0.06	0.17	11.5%	8.5%	0.600	0.342	0.34%
Total		-62.52	-0.98%	1.78	14.82	3.39%	24,665	5.0%	-9.4%	38.49	81.32	12.01%	1.56%			100%

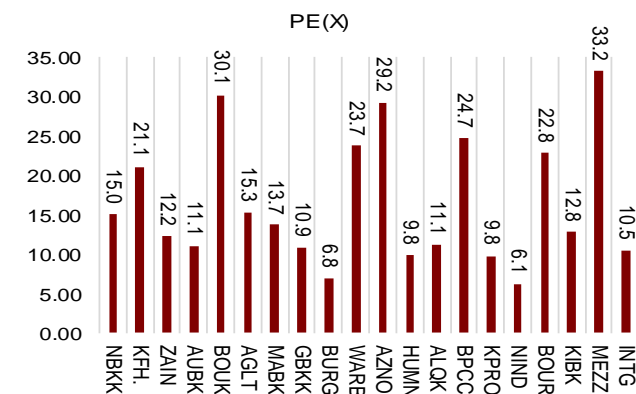
Market Capitalization



Price to Book Value



Price to Earning Value

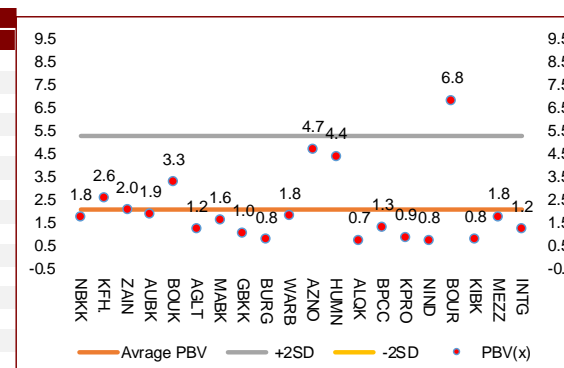


DAILY MARKET COVERAGE REPORT

NIC MENA SECURITIES - RESEARCH AND STUDIES DEP



Premier Market Company	Price			Valuation Multiples			MKT Cap Mn KD	Price Performance		ROE (%)	ROA (%)
	Close (kD)	Day Δ	Day % Δ	PBV(X)	PE(X)	DY%		MTD(%)	YTD (%)		
National Bank of Kuwait	0.889	-0.001	-0.11%	1.76	15.0	3.6%	6,037	2.2%	-12.8%	11.7%	1.4%
Kuwait Finance House	0.697	-0.011	-1.55%	2.57	21.1	2.4%	5,289	5.6%	-5.3%	12.2%	1.3%
Mobile Telecommunications	0.614	-0.002	-0.32%	2.05	12.2	5.1%	2,657	7.1%	2.5%	16.7%	4.6%
Ahli United Bank BSC	0.251	-0.001	-0.40%	1.89	11.1	4.8%	2,423	6.8%	-14.9%	17.1%	1.8%
Boubyan Bank	0.623	-0.014	-2.20%	3.28	30.1	1.0%	1,886	4.9%	2.2%	10.9%	1.2%
Agility Public Warehousing	0.694	-0.001	-0.14%	1.21	15.3	2.6%	1,328	5.5%	-2.6%	7.9%	4.2%
Mabane Co.	0.700	-0.028	-3.85%	1.64	13.7	1.5%	774	-3.7%	-17.7%	11.9%	5.8%
Gulf Bank	0.239	-0.002	-0.83%	1.04	10.9	4.2%	694	9.1%	-20.8%	9.6%	1.0%
Burgan Bank	0.221	-0.006	-2.64%	0.77	6.8	5.2%	579	9.4%	-27.3%	11.3%	1.2%
Warba Bank	0.249	-0.015	-5.68%	1.80	23.7	0.0%	392	0.4%	-4.5%	7.6%	0.5%
Shamal Az-Zour Al-Oula Power & Water	0.327	0.001	0.31%	4.69	29.2	0.0%	360	2.2%	0.0%	16.1%	2.3%
Human Soft Holding	2.899	0.018	0.62%	4.39	9.8	6.3%	353	11.2%	-4.0%	44.6%	30.3%
Qurain Petrochemical Industries	0.307	-0.005	-1.60%	0.75	11.1	5.0%	314	12.0%	-1.0%	6.7%	3.6%
Boubyan Petrochemical	0.580	0.003	0.52%	1.31	24.7	8.9%	293	5.5%	-13.2%	5.3%	2.1%
Kuwait Projects Company Holding	0.162	-0.002	-1.22%	0.87	9.8	5.7%	294	7.3%	-25.0%	8.9%	0.3%
National Industries Group Holding	0.199	-0.002	-1.00%	0.75	6.1	5.4%	284	20.5%	-17.0%	12.3%	3.7%
Boursa Kuwait Securities Co	1.091	-0.017	-1.53%	6.82	22.8	0.0%	219	-3.9%	0.0%	29.9%	26.5%
Kuwait International Bank	0.215	-0.004	-1.83%	0.78	12.8	4.7%	219	16.1%	-17.2%	6.1%	0.6%
Mezzan Holding	0.615	-0.004	-0.65%	1.77	33.2	2.7%	187	-1.3%	23.0%	5.3%	2.2%
Integrated Holding	0.378	0.002	0.53%	1.21	10.5	10.6%	83	5.3%	-31.4%	11.5%	8.5%
Total		-62.52	-0.98%	1.78	14.82	3.39%	24,665	5.0%	-9.4%	12.01%	1.56%



Premier Market Discription	Price			Moving Average			RSI	MKT Cap Mn KD	Price Performance		52 Week (KD)	
	Close (kD)	Day Δ	Day % Δ	50 Day	200 Day	14 Day			MTD(%)	YTD (%)	High	Low
Premier Index	6,315	-62.52	-0.98%	5,921	5,861	65	24,665	5.0%	-9.4%	7,172	4,499	

Top 5 Performrs (Today's Price Change)

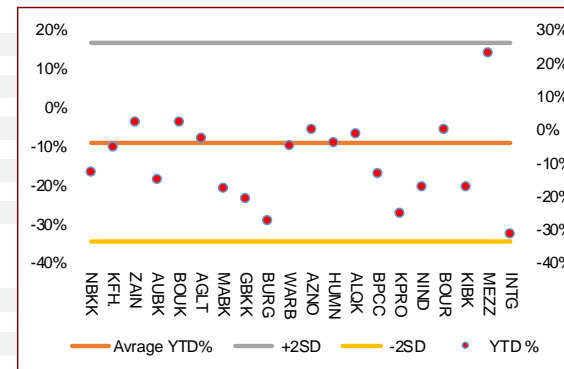
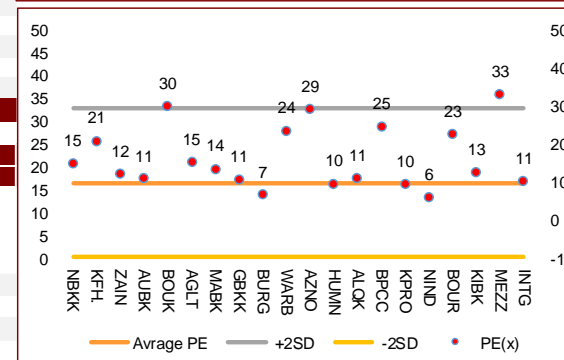
Human Soft Holding	2.899	0.018	0.62%	2.663	2.779	69	353	11.2%	-4.0%	3.470	1.944
Integrated Holding	0.378	0.002	0.53%	0.371	0.441	44	83	5.3%	-31.4%	0.600	0.342
Boubyan Petrochemical	0.580	0.003	0.52%	0.553	0.568	56	293	5.5%	-13.2%	0.779	0.395
Shamal Az-Zour Al-Oula Power & Water	0.327	0.001	0.31%	0.277	0.069	36	360	2.2%	0.0%	0.500	0.297
National Bank of Kuwait	0.889	-0.001	-0.11%	0.860	0.845	45	6,037	2.2%	-12.8%	1.062	0.654

Middel Performrs (Today's Price Change)

Agility Public Warehousing	0.694	-0.001	-0.14%	0.649	0.614	59	1,328	5.5%	-2.6%	0.748	0.357
Mobile Telecommunications	0.614	-0.002	-0.32%	0.584	0.549	70	2,657	7.1%	2.5%	0.629	0.407
Ahli United Bank BSC	0.251	-0.001	-0.40%	0.228	0.226	59	2,423	6.8%	-14.9%	0.311	0.160
Mezzan Holding	0.615	-0.004	-0.65%	0.627	0.560	37	187	-1.3%	23.0%	0.665	0.428
Gulf Bank	0.239	-0.002	-0.83%	0.218	0.235	61	694	9.1%	-20.8%	0.317	0.180
National Industries Group Holding	0.199	-0.002	-1.00%	0.168	0.182	73	284	20.5%	-17.0%	0.247	0.121
Kuwait Projects Company Holding	0.162	-0.002	-1.22%	0.153	0.175	60	294	7.3%	-25.0%	0.225	0.147
Boursa Kuwait Securities Co	1.091	-0.017	-1.53%	0.493	0.123	42	219	-3.9%	0.0%	1.210	0.990
Kuwait Finance House	0.697	-0.011	-1.55%	0.644	0.638	58	5,289	5.6%	-5.3%	0.761	0.473
Qurain Petrochemical Industries	0.307	-0.005	-1.60%	0.100	0.100	76	314	12.0%	-1.0%	1.210	0.996

Bottom 5 Performrs (Today's Price Change)

Warba Bank	0.249	-0.015	-5.68%	0.225	0.220	68	392	0.4%	-4.5%	0.279	0.164
Mabane Co.	0.700	-0.028	-3.85%	0.683	0.681	33	774	-3.7%	-17.7%	0.877	0.434
Burgan Bank	0.221	-0.006	-2.64%	0.202	0.225	68	579	9.4%	-27.3%	0.324	0.175
Boubyan Bank	0.623	-0.014	-2.20%	0.585	0.546	81	1,886	4.9%	2.2%	0.642	0.380
Kuwait International Bank	0.215	-0.004	-1.83%	0.184	0.202	70	219	16.1%	-17.2%	0.270	0.162



DAILY MARKET COVERAGE REPORT

NIC MENA SECURITIES - RESEARCH AND STUDIES DEP



Banking Sector	Price			Valuation Multiples			MKT Cap	Price Performance		Trading Indicators		ROE	ROA	52 Week (KD)		MKT Cap
	Company	Close (KD)	Day Δ	Day % Δ	PBV(X)	PE(X)		DY%	Mn KD	MTD(%)	YTD (%)			Value (Mn KD)	(Mn Shrs)	
National Bank of Kuwait	0.889	-0.001	-0.11%	1.76	15.04	3.6%	6,037	2%	-13%	6.68	7.52	11.7%	1.4%	1.062	0.654	18.32%
Kuwait Finance House	0.697	-0.011	-1.55%	2.57	21.07	2.4%	5,289	6%	-5%	14.06	20.08	12.2%	1.3%	0.761	0.473	16.05%
Ahli United Bank BSC	0.251	-0.001	-0.40%	1.89	11.05	4.8%	2,423	7%	-15%	1.46	5.84	17.1%	1.8%	0.311	0.160	7.35%
Boubyan Bank	0.623	-0.014	-2.20%	3.28	30.11	1.0%	1,886	5%	2%	1.38	2.20	10.9%	1.2%	0.642	0.380	5.72%
Commercial Bank of Kuwait	0.500	0.000	0.00%	1.32	0.00	3.7%	965	0%	-5%	0.00	0.00	0.0%	0.0%	0.555	0.465	2.93%
Gulf Bank	0.239	-0.002	-0.83%	1.04	10.91	4.2%	694	9%	-21%	1.16	4.86	9.6%	1.0%	0.317	0.180	2.11%
Burgan Bank	0.221	-0.006	-2.64%	0.77	6.84	5.2%	579	9%	-27%	0.81	3.66	11.3%	1.2%	0.324	0.175	1.76%
Ahli United Bank	0.288	-0.002	-0.69%	1.23	10.21	4.7%	562	6%	-12%	0.19	0.65	12.1%	1.3%	0.330	0.225	1.70%
Warba Bank	0.249	-0.015	-5.68%	1.80	23.71	0.0%	392	0%	-5%	2.02	7.87	7.6%	0.5%	0.279	0.164	1.19%
Al Ahli Bank of Kuwait	0.207	-0.005	-2.36%	0.59	11.59	6.8%	332	12%	-19%	0.32	1.51	5.1%	0.6%	0.302	0.156	1.01%
Kuwait International Bank	0.215	-0.004	-1.83%	0.78	12.78	4.7%	219	16%	-17%	1.96	9.07	6.1%	0.6%	0.270	0.162	0.67%
Total Banking Sector - 11 Companies				1.76	16.15	3.3%	19,380			30.04	63.26	10.90%	1.21%			58.81%

Basic materials	Price			Valuation Multiples			MKT Cap	Price Performance		Trading Indicators		ROE	ROA	52 Week (KD)		MKT Cap
	Company	Close (KD)	Day Δ	Day % Δ	PBV(X)	PE(X)		DY%	Mn KD	MTD(%)	YTD (%)			Value (Mn KD)	(Mn Shrs)	
Qurain Petrochemical Industries	0.307	-0.005	-1.60%	0.75	11.11	5.0%	314	12%	-1%	0.15	0.48	6.7%	3.6%	0.323	0.163	0.95%
Boubyan Petrochemical	0.580	0.003	0.52%	1.31	24.74	8.9%	293	5%	-13%	0.10	0.18	5.3%	2.1%	0.779	0.395	0.89%
Al Kout Industrial Projects	0.731	0.000	0.00%	2.38	15.41	6.8%	74	-5%	-14%	0.00	0.00	15.4%	11.3%	0.850	0.731	0.22%
Kuwait Foundry	0.260	0.001	0.39%	0.87	21.01	20.5%	19	1%	-22%	0.00	0.00	4.1%	3.8%	0.429	0.192	0.06%
Total Basic materials - 4 Companies				1.00	15.28	7.2%	699			0.25	0.66	6.57%	5.07%			2.12%

Consumer goods	Price			Valuation Multiples			MKT Cap	Price Performance		Trading Indicators		ROE	ROA	52 Week (KD)		MKT Cap
	Company	Close (KD)	Day Δ	Day % Δ	PBV(X)	PE(X)		DY%	Mn KD	MTD(%)	YTD (%)			Value (Mn KD)	(Mn Shrs)	
Mezzan Holding	0.615	-0.004	-0.65%	1.77	33.23	2.7%	187	-1%	23%	0.21	0.33	5.3%	2.2%	0.665	0.428	0.57%
Livestock Transport and Trading	0.190	0.000	0.00%	0.99	33.87	0.1%	40	4%	9%	0.01	0.07	2.9%	2.0%	0.200	0.152	0.12%
Danah Al Safat Foodstuff	0.012	0.000	0.00%	0.25	(0.30)	0.1%	1	0%	-25%	0.00	0.00	-84.8%	-43.2%	0.019	0.010	0.00%
Total Basic materials - 3 Companies				1.51	92.51	2.2%	228			0.22	0.40	1.64%	0.90%			0.69%

DAILY MARKET COVERAGE REPORT

NIC MENA SECURITIES - RESEARCH AND STUDIES DEP



Consumer services																
Company	Price			Valuation Multiples			MKT Cap	Price Performance		Trading Indicators		ROE	ROA	52 Week (KD)		MKT Cap
	Close (KD)	Day Δ	Day % Δ	PBV(X)	PE(X)	DY%	Mn KD	MTD(%)	YTD (%)	Value (Mn KD)	(Mn Shrs)	(%)	(%)	High	Low	%
Jazeera Airways	0.574	-0.003	-0.52%	2.85	7.68	6.1%	115	-3%	-48%	0.15	0.26	37.1%	9.0%	1.110	0.372	0.35%
Kuwait National Cinema	0.700	0.000	0.00%	0.80	7.57	6.9%	65	0%	-33%	0.00	0.00	10.6%	7.2%	1.050	0.600	0.20%
Oula Fuel Marketing	0.117	-0.002	-1.68%	0.70	12.24	5.1%	47	5%	-8%	0.01	0.09	5.7%	3.2%	0.134	0.095	0.14%
Al Soor Fuel Marketing	0.120	0.000	0.00%	0.74	14.04	4.1%	49	9%	-4%	0.01	0.07	5.3%	3.7%	0.129	0.096	0.15%
Sultan Center Food Products	0.050	-0.002	-3.65%	0.62	12.61	0.0%	28	-5%	-4%	0.00	0.07	4.9%	0.7%	0.060	0.037	0.09%
Jiyad Holding	0.051	-0.002	-2.87%	0.45	10.13	0.0%	18	27%	31%	0.07	1.35	4.5%	2.8%	0.054	0.029	0.05%
IFA Hotels and Resorts	0.023	-0.001	-4.60%	0.82	(0.62)	0.0%	14	0%	-58%	0.07	3.15	-131.5%	-8.1%	0.062	0.021	0.04%
Kuwait Resorts	0.056	-0.001	-1.06%	0.38	10.13	0.0%	11	8%	-3%	0.03	0.60	3.8%	3.2%	0.060	0.038	0.03%
Alrai Media Group	0.083	0.000	0.00%	0.82	(2.39)	0.0%	8	0%	-2%	0.00	0.00	-34.2%	-20.0%	0.093	0.069	0.03%
Future Kid Entertainment and Real Estate	0.072	0.000	0.00%	0.42	27.28	16.0%	8	-10%	-18%	0.00	0.00	1.5%	0.9%	0.110	0.069	0.02%
Al Eid Food	0.059	-0.001	-1.67%	0.40	4.71	0.0%	7	3%	-10%	0.01	0.23	8.4%	6.1%	0.080	0.041	0.02%
Kuwait Hotels	0.090	-0.005	-4.95%	1.27	(5.22)	0.0%	5	-15%	-10%	0.00	0.00	-24.4%	-13.2%	0.111	0.069	0.02%
Palms Agro Production	0.080	0.000	0.00%	0.67	(56.04)	12.5%	4	22%	98%	0.00	0.00	-1.2%	-0.9%	0.080	0.025	0.01%
Kuwait Cable Vision	0.014	0.000	0.00%	0.52	(11.65)	0.0%	1	0%	0%	0.00	0.00	-4.5%	-3.0%	0.026	0.012	0.00%
Total Consumer services - 14 Companies				0.86	36.05	4.7%	380			0.36	5.82	2.38%	2.72%			1.15%

Financial services																
Company	Price			Valuation Multiples			MKT Cap	Price Performance		Trading Indicators		ROE	ROA	52 Week (KD)		MKT Cap
	Close (KD)	Day Δ	Day % Δ	PBV(X)	PE(X)	DY%	Mn KD	MTD(%)	YTD (%)	Value (Mn KD)	(Mn Shrs)	(%)	(%)	High	Low	%
Egypt Kuwait Holding	0.380	0.000	0.00%	2.25	12.83	5.2%	389	4%	-16%	0.00	0.00	17.6%	7.1%	0.500	0.318	1.18%
Kuwait Projects Company Holding	0.162	-0.002	-1.22%	0.87	9.78	5.7%	294	7%	-25%	0.26	1.59	8.9%	0.3%	0.225	0.147	0.89%
National Industries Group Holding	0.199	-0.002	-1.00%	0.75	6.13	5.4%	284	20%	-17%	0.90	4.52	12.3%	3.7%	0.247	0.121	0.86%
Boursa Kuwait Securities Co	1.091	-0.017	-1.53%	6.82	22.84	0.0%	219	-4%	0%	0.17	0.15	29.9%	26.5%	1.210	0.990	0.66%
GFH Financial Group	0.047	-0.001	-1.27%	0.51	6.38	6.1%	158	-6%	-33%	0.11	2.36	8.0%	1.3%	0.074	0.042	0.48%
National Investments	0.141	-0.002	-1.40%	0.62	10.49	5.7%	112	7%	3%	0.26	1.86	5.9%	5.0%	0.158	0.080	0.34%
Tamdeen Investment	0.316	0.000	0.00%	0.39	13.11	3.8%	108	4%	-8%	0.00	0.00	3.0%	2.2%	0.400	0.199	0.33%
Alimtiq Investment Group	0.101	-0.004	-3.81%	0.48	5.26	7.9%	104	10%	-20%	1.47	14.43	9.1%	5.2%	0.137	0.071	0.31%
Commercial Facilities	0.181	-0.001	-0.55%	0.56	6.97	9.3%	92	-1%	-17%	0.00	0.01	8.0%	4.2%	0.235	0.179	0.28%
Aayan Leasing and Investment	0.089	-0.003	-3.46%	1.05	(4.90)	2.0%	72	4%	93%	1.06	11.66	-21.4%	-4.9%	0.102	0.032	0.22%
Kuwait Investment	0.142	0.001	0.71%	0.62	4.45	7.1%	78	11%	-5%	0.21	1.48	13.9%	6.0%	0.172	0.095	0.24%
Noor Financial Investment	0.172	0.002	1.18%	1.05	8.41	2.9%	68	10%	45%	0.02	0.15	12.5%	7.5%	0.184	0.076	0.21%

DAILY MARKET COVERAGE REPORT

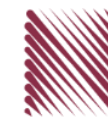
NIC MENA SECURITIES - RESEARCH AND STUDIES DEP



Financial services Company	Price			Valuation Multiples			MKT Cap	Price Performance		Trading Indicators		ROE	ROA	52 Week (KD)		MKT Cap
	Close (KD)	Day Δ	Day % Δ	PBV(X)	PE(X)	DY%	Mn KD	MTD(%)	YTD (%)	Value (Mn KD)	(Mn Shrs)	(%)	(%)	High	Low	%
Arzan Financial Group for Financing and Invest	0.060	0.000	0.67%	0.48	43.55	0.0%	48	7%	153%	0.80	13.45	1.1%	0.7%	0.064	0.022	0.14%
Kuwait Financial Centre	0.087	-0.001	-0.57%	0.44	5.98	5.7%	42	3%	-18%	0.02	0.26	7.3%	3.5%	0.121	0.070	0.13%
Gulf Investment House	0.095	0.000	-0.42%	1.06	174.80	0.0%	38	1%	47%	0.01	0.05	0.6%	0.5%	0.108	0.038	0.12%
Al Bareeq Holding	0.083	0.000	0.00%	0.87	16.62	0.0%	36	5%	-17%	0.00	0.00	5.2%	5.0%	0.110	0.072	0.11%
Arabi Group Holdings	0.198	0.000	0.00%	1.07	(19.90)	0.0%	33	0%	-28%	0.00	0.00	-5.4%	-0.6%	0.337	0.115	0.10%
Kuwait and Middle East Financial Investment	0.116	-0.001	-0.85%	1.89	46.33	0.0%	30	5%	30%	0.01	0.10	4.1%	3.2%	0.138	0.063	0.09%
Privatization Holding	0.045	-0.001	-1.09%	0.33	(40.75)	0.0%	28	6%	-10%	0.01	0.19	-0.8%	-0.5%	0.059	0.037	0.08%
Asiya Capital Investments	0.033	-0.001	-4.12%	0.35	16.80	0.2%	25	2%	-20%	0.00	0.13	2.1%	2.0%	0.041	0.029	0.08%
Umm Al Qaiwain General Investment Co	0.070	-0.002	-2.64%	0.47	13.18	5.2%	25	-3%	5%	0.00	0.01	3.6%	3.3%	0.096	0.052	0.08%
Securities House	0.045	-0.001	-1.75%	0.61	(65.50)	0.0%	25	4%	-1%	0.19	4.20	-0.9%	-0.7%	0.050	0.027	0.08%
KAMCO Investment	0.076	-0.001	-1.81%	0.46	8.58	0.0%	26	8%	-14%	0.00	0.01	5.4%	2.3%	0.111	0.060	0.08%
First Investment	0.036	0.000	0.00%	0.56	(0.49)	0.0%	23	14%	4%	0.08	2.30	-113.6%	-62.0%	0.045	0.022	0.07%
Inovest BSC Public	0.081	0.003	3.19%	0.56	10.84	7.3%	24	8%	27%	0.29	3.70	5.2%	2.9%	0.080	0.044	0.07%
Coast Investment and Development	0.039	-0.002	-3.74%	0.41	38.47	0.0%	23	8%	-3%	0.01	0.20	1.1%	1.0%	0.045	0.026	0.07%
Al Madar Finance and Investment	0.084	0.000	0.12%	0.76	12.54	0.0%	17	2%	-9%	0.09	1.08	6.1%	5.0%	0.143	0.062	0.05%
Bayan Investment	0.042	0.000	0.72%	0.42	(21.81)	0.0%	15	-15%	5%	0.01	0.16	-1.9%	-0.8%	0.053	0.031	0.05%
Al Manar Financing and Leasing	0.049	0.000	0.00%	0.45	12.63	1.0%	15	11%	-5%	0.00	0.00	3.5%	2.7%	0.060	0.037	0.05%
Manazel Holding	0.035	0.000	0.00%	0.76	22.17	0.0%	15	7%	-13%	0.03	0.88	3.4%	0.8%	0.048	0.021	0.05%
Kuwait Finance and Investment	0.048	0.003	6.14%	0.38	21.73	0.0%	15	11%	-2%	0.08	1.65	1.8%	1.2%	0.058	0.038	0.05%
National International Holding	0.063	0.001	0.80%	0.33	7.57	4.7%	13	4%	-15%	0.01	0.09	4.4%	3.3%	0.081	0.052	0.04%
Osoul Investment	0.082	0.002	2.25%	0.62	6.87	0.0%	13	-2%	4%	0.00	0.03	9.0%	8.2%	0.121	0.070	0.04%
UniCap Investment and Finance	0.044	0.000	0.68%	0.45	(22.18)	0.0%	11	4%	-19%	0.00	0.03	-2.0%	-1.0%	0.057	0.035	0.03%
Amar Finance and Leasing	0.055	0.000	0.00%	0.62	46.05	0.0%	11	-2%	45%	0.00	0.08	1.3%	1.2%	0.064	0.037	0.03%
Gulf North Africa Holding	0.059	0.000	0.00%	0.78	76.01	0.0%	9	1%	-5%	0.00	0.00	1.0%	0.6%	0.062	0.052	0.03%
Al Salam Group Holding	0.030	0.000	1.01%	0.26	225.73	0.0%	8	16%	2%	0.54	18.01	0.1%	0.1%	0.033	0.018	0.02%
International Financial Advisors	0.059	0.000	-0.51%	1.78	(0.80)	1.1%	15	91%	10%	0.43	7.19	-222.8%	-19.3%	0.062	0.027	0.04%
Amwal International Investment	0.036	0.000	0.00%	0.66	13.12	0.0%	6	0%	18%	0.00	0.00	5.0%	2.6%	0.044	0.030	0.02%
Al Madina for Finance and Investment	0.017	0.002	9.74%	0.57	(3.18)	0.0%	7	37%	13%	1.16	69.87	-17.9%	-7.7%	0.019	0.009	0.02%
Credit Rating and Collection	0.032	0.000	0.00%	0.97	(21.20)	0.0%	5	0%	58%	0.00	0.00	-4.6%	-4.3%	0.035	0.019	0.02%
Ektitab Holding	0.016	0.000	1.95%	0.38	(11.05)	0.0%	5	1%	4%	0.11	7.00	-3.4%	-3.0%	0.017	0.010	0.02%
Kuwait Syrian Holding Co	0.031	0.001	4.35%	0.27	(15.94)	0.0%	5	16%	-1%	0.00	0.01	-1.7%	-1.1%	0.043	0.022	0.02%
Warba Capital Holding	0.047	0.000	0.86%	0.52	(7.45)	0.0%	5	1%	-27%	0.00	0.03	-7.0%	-6.2%	0.070	0.042	0.01%
National Consumer Holding	0.047	-0.001	-1.26%	0.52	232.21	0.0%	4	-1%	-14%	0.00	0.01	0.2%	0.2%	0.100	0.010	0.01%
Al Deera Holding	0.016	0.000	0.00%	0.70	(9.02)	0.0%	3	0%	-20%	0.00	0.00	-7.7%	-1.7%	0.022	0.011	0.01%
Al Mal Investment Company	0.009	0.000	-2.17%	0.40	(0.84)	0.0%	3	2%	-8%	0.03	3.41	-47.6%	-23.3%	0.016	0.008	0.01%
Gulf Franchising Holding	0.050	0.000	0.00%	0.78	(2.16)	0.0%	2	4%	-34%	0.00	0.00	-36.2%	-10.8%	0.148	0.016	0.01%
Tamkeen Holding	0.005	0.000	0.00%	0.05	(7.18)	0.0%	0	0%	0%	0.00	0.00	-0.7%	-0.7%	0.005	0.005	0.00%
Total Financial services - 49 Companies				0.75	16.88	4.0%	2,606			8.38	172.33	4.42%	4.14%			7.91%

DAILY MARKET COVERAGE REPORT

NIC MENA SECURITIES - RESEARCH AND STUDIES DEP



Health care	Price			Valuation Multiples			MKT Cap	Price Performance		Trading Indicators		ROE	ROA	52 Week (KD)		MKT Cap
	Company	Close (KD)	Day Δ	Day % Δ	PBV(X)	PE(X)		DY%	Mn KD	MTD(%)	YTD (%)			Value (Mn KD)	(Mn Shrs)	
Al-Maidan Clinic for Oral Health Services	1.220	0.000	0.00%	7.90	47.78	0.6%	305	0%	0%	0.00	0.00	16.5%	10.9%	1.240	1.220	0.93%
Advanced Technology	0.600	0.000	0.00%	1.56	48.85	2.5%	90	1%	-26%	0.00	0.00	3.2%	0.7%	0.900	0.580	0.27%
Yiaco Medical	0.707	0.000	0.00%	6.06	52.72	0.0%	12	0%	0%	0.00	0.00	11.5%	0.6%	0.707	0.707	0.04%
Total Health care - 3 Companies				4.15	48.14	1.0%	407			0.00	0.00	8.61%	4.68%			1.24%

Industrials	Price			Valuation Multiples			MKT Cap	Price Performance		Trading Indicators		ROE	ROA	52 Week (KD)		MKT Cap
	Company	Close (KD)	Day Δ	Day % Δ	PBV(X)	PE(X)		DY%	Mn KD	MTD(%)	YTD (%)			Value (Mn KD)	(Mn Shrs)	
Agility Public Warehousing	0.694	-0.001	-0.14%	1.21	15.31	2.6%	1,328	5%	-3%	1.19	1.71	7.9%	4.2%	0.748	0.357	4.03%
Human Soft Holding	2.899	0.018	0.62%	4.39	9.83	6.3%	353	11%	-4%	0.29	0.10	44.6%	30.3%	3.470	1.944	1.07%
ALAFCO Aviation Lease and Finance	0.165	0.000	0.00%	0.49	8.88	6.1%	157	4%	-40%	0.32	1.92	5.5%	1.4%	0.278	0.138	0.48%
Kuwait Cement	0.225	-0.004	-1.75%	0.77	39.93	6.6%	160	17%	-9%	0.22	0.96	1.9%	1.3%	0.265	0.144	0.49%
Gulf Cable and Electrical Industries	0.704	0.002	0.28%	0.85	34.91	3.9%	148	2%	43%	0.13	0.18	2.4%	2.2%	0.742	0.390	0.45%
Integrated Holding	0.378	0.002	0.53%	1.21	10.53	10.6%	83	5%	-31%	0.06	0.17	11.5%	8.5%	0.600	0.342	0.25%
Kuwait Portland Cement	0.789	0.000	0.00%	1.06	10.42	12.5%	79	5%	-20%	0.03	0.04	10.2%	8.2%	1.133	0.683	0.24%
Educational Holding Group	0.307	0.000	0.00%	1.78	9.72	4.9%	75	-1%	-30%	0.00	0.02	18.3%	16.7%	0.475	0.228	0.23%
United Projects for Aviation Services	0.465	0.000	0.00%	0.98	7.96	4.5%	74	0%	-9%	0.00	0.00	12.3%	7.8%	0.512	0.367	0.23%
Heavy Engineering Industries and Shipbuilding	0.376	0.000	0.00%	1.09	6.04	7.8%	68	4%	-7%	0.13	0.35	18.0%	5.9%	0.419	0.298	0.21%
National Industries	0.155	-0.002	-1.27%	0.64	12.63	6.4%	54	0%	-6%	0.00	0.00	5.1%	3.8%	0.173	0.143	0.16%
ACICO Industries	0.105	0.001	0.96%	0.34	13.67	4.7%	35	-1%	-25%	0.00	0.01	2.5%	0.6%	0.137	0.081	0.10%
Kuwait Company for Process Plant Constructi	0.324	-0.003	-0.92%	1.28	6.94	5.5%	35	7%	34%	0.00	0.01	18.5%	7.7%	0.337	0.175	0.10%
Ras Al Khaimah for White Cement and Constr	0.065	0.000	0.00%	0.51	19.94	8.4%	33	0%	0%	0.00	0.00	2.6%	2.0%	0.080	0.060	0.10%
Combined Group Contracting	0.183	-0.003	-1.61%	0.64	8.24	11.2%	30	8%	-26%	0.28	1.53	7.7%	1.2%	0.251	0.138	0.09%
Gulf Cement	0.034	0.002	5.20%	0.34	(12.55)	12.1%	28	4%	-37%	0.01	0.30	-2.7%	-2.2%	0.059	0.029	0.09%
Sharjah Cement and Industrial Development	0.042	0.000	0.00%	0.21	25.32	12.4%	26	0%	0%	0.00	0.00	0.8%	0.6%	0.060	0.042	0.08%
KGL Logistics	0.030	0.000	-0.33%	0.22	4.88	0.1%	23	12%	-19%	0.01	0.30	4.6%	2.9%	0.043	0.023	0.07%
Kuwait and Gulf Link Transport	0.053	0.000	-0.38%	0.22	15.94	0.0%	15	11%	-22%	0.00	0.03	1.4%	0.4%	0.077	0.042	0.04%
Shuaiba Industrial	0.140	0.000	0.00%	0.78	43.23	7.1%	14	8%	-10%	0.00	0.00	1.8%	1.4%	0.180	0.122	0.04%
National Cleaning	0.057	-0.001	-0.87%	0.34	7.60	8.9%	12	1%	-16%	0.00	0.07	4.4%	1.5%	0.088	0.047	0.04%
Fujairah Cement Industries	0.037	0.000	0.00%	0.15	17.94	11.4%	13	9%	-18%	0.00	0.00	0.8%	0.4%	0.051	0.029	0.04%
Hilal Cement	0.114	0.000	0.00%	0.99	(9.37)	13.2%	12	0%	14%	0.00	0.00	-10.6%	-6.2%	0.126	0.063	0.04%
Mubarrad Holding	0.063	-0.001	-0.79%	0.50	10.08	7.5%	10	2%	-29%	0.02	0.28	4.9%	4.1%	0.089	0.049	0.03%
Specialities Group Holding	0.065	-0.001	-1.37%	0.35	7.72	0.0%	10	5%	-15%	0.01	0.19	4.5%	3.5%	0.078	0.050	0.03%
National Ranges	0.016	0.000	-1.84%	0.29	(1.17)	0.0%	4	14%	60%	0.02	1.34	-24.9%	-5.3%	0.018	0.007	0.01%
Salbookh Trading	0.036	-0.001	-1.39%	0.48	(2.07)	0.0%	4	-1%	-29%	0.01	0.31	-23.2%	-15.9%	0.051	0.026	0.01%
Metal and Recycling	0.037	-0.002	-4.90%	0.31	(1.57)	0.0%	3	-6%	-26%	0.00	0.00	-19.7%	-10.1%	0.070	0.020	0.01%
Equipment Holding	0.016	0.000	1.25%	0.32	(187.07)	0.0%	2	-3%	-29%	0.01	0.70	-0.2%	-0.1%	0.024	0.013	0.01%
Total Industrials - 29 Companies				0.92	13.76	4.8%	2,887			2.76	10.53	6.67%	5.05%			8.76%

DAILY MARKET COVERAGE REPORT

NIC MENA SECURITIES - RESEARCH AND STUDIES DEP



Insurance	Price			Valuation Multiples			MKT Cap	Price Performance		Trading Indicators		ROE	ROA	52 Week (KD)		MKT Cap
	Company	Close (KD)	Day Δ	Day % Δ	PBV(X)	PE(X)		DY%	Mn KD	MTD(%)	YTD (%)			Value (Mn KD)	(Mn Shrs)	
Gulf Insurance Group	0.580	0.005	0.87%	0.99	8.09	6.4%	108	-19%	-12%	0.01	0.02	12.3%	1.7%	0.720	0.550	0.33%
Al Ahleia Insurance	0.405	-0.015	-3.57%	0.76	8.16	8.3%	84	1%	-1%	0.03	0.08	9.4%	3.3%	0.445	0.367	0.25%
Kuwait Insurance	0.379	0.000	0.00%	0.62	7.34	6.3%	70	5%	15%	0.00	0.00	8.5%	4.6%	0.387	0.300	0.21%
Kuwait Reinsurance	0.225	0.000	0.00%	0.85	9.63	1.9%	46	2%	63%	0.00	0.00	8.9%	3.2%	0.225	0.126	0.14%
Bahrain Kuwait Insurance	0.200	0.000	0.00%	0.93	12.86	6.1%	28	0%	0%	0.00	0.00	7.2%	1.1%	0.200	0.200	0.09%
Warba Insurance	0.078	0.003	3.33%	0.34	11.00	0.0%	13	6%	28%	0.01	0.12	3.1%	1.0%	0.094	0.051	0.04%
First Takaful Insurance	0.040	0.000	0.00%	0.48	5.02	0.0%	4	7%	4%	0.00	0.00	9.6%	5.9%	0.056	0.031	0.01%
Wethaq Takaful Insurance	0.021	0.000	-1.83%	0.20	(27.08)	0.0%	2	-9%	-14%	0.04	2.11	-0.7%	-0.7%	0.035	0.018	0.01%
Total Insurance - 8 Companies				0.75	8.46	5.9%	355			0.10	2.32	8.86%	3.00%			1.08%

Oil and Gas	Price			Valuation Multiples			MKT Cap	Price Performance		Trading Indicators		ROE	ROA	52 Week (KD)		MKT Cap
	Company	Close (KD)	Day Δ	Day % Δ	PBV(X)	PE(X)		DY%	Mn KD	MTD(%)	YTD (%)			Value (Mn KD)	(Mn Shrs)	
National Petroleum Services	1.150	-0.020	-1.71%	2.74	9.81	6.1%	112	5%	-2%	0.00	0.00	27.9%	23.6%	1.389	0.903	0.34%
Independent Petroleum Group	0.430	0.000	0.00%	0.79	11.72	7.0%	78	0%	-11%	0.00	0.00	6.8%	2.2%	0.497	0.375	0.24%
Burgan for Well Drilling Trading and Maintenanc	0.082	0.003	3.80%	0.30	8.33	0.0%	19	6%	3%	0.00	0.01	3.6%	1.1%	0.098	0.060	0.06%
Energy House Holding	0.023	0.000	0.43%	0.72	(3.20)	0.0%	17	18%	2%	0.01	0.39	-22.5%	-17.0%	0.036	0.014	0.05%
Gulf Petroleum Investment	0.021	0.000	0.48%	0.23	(6.77)	0.0%	10	14%	4%	0.20	9.60	-3.4%	-2.3%	0.023	0.012	0.03%
Senegy Holding	0.018	-0.001	-3.68%	0.37	(0.77)	0.0%	4	-3%	-16%	0.01	0.27	-47.9%	-30.4%	0.027	0.014	0.01%
Total Oil and Gas - 6 Companies				0.86	27.72	5.1%	239			0.22	10.26	3.10%	2.18%			0.72%

Real estate	Price			Valuation Multiples			MKT Cap	Price Performance		Trading Indicators		ROE	ROA	52 Week (KD)		MKT Cap
	Company	Close (KD)	Day Δ	Day % Δ	PBV(X)	PE(X)		DY%	Mn KD	MTD(%)	YTD (%)			Value (Mn KD)	(Mn Shrs)	
Mabane Co.	0.700	-0.028	-3.85%	1.64	13.71	1.5%	774	-4%	-18%	2.03	2.87	11.9%	5.8%	0.877	0.434	2.35%
Salhia Real Estate	0.402	-0.002	-0.50%	1.22	9.24	5.0%	199	1%	-4%	0.01	0.02	13.2%	5.8%	0.460	0.330	0.60%
Commercial Real Estate	0.110	0.000	0.00%	0.67	13.62	5.2%	199	6%	17%	0.00	0.03	5.0%	2.7%	0.112	0.085	0.60%
National Real Estate	0.074	-0.001	-1.07%	0.41	9.77	0.0%	112	0%	-14%	0.25	3.40	4.2%	2.4%	0.090	0.058	0.34%
Tamdeen Real Estate	0.250	-0.011	-4.21%	0.36	12.20	4.0%	101	-4%	-22%	0.03	0.11	3.0%	2.2%	0.343	0.241	0.31%
Kuwait Real Estate	0.106	0.001	0.95%	0.74	13.47	0.4%	95	13%	1%	0.78	7.54	5.5%	2.2%	0.115	0.070	0.29%
United Real Estate	0.050	0.000	0.00%	0.29	(7.44)	0.0%	54	3%	-18%	0.00	0.04	-3.9%	-1.2%	0.063	0.045	0.16%
First Dubai for Real Estate Development	0.044	0.000	0.00%	0.58	47.70	0.9%	43	12%	22%	0.04	0.93	1.2%	1.0%	0.055	0.027	0.13%
Al Mazaya Holding	0.057	-0.001	-1.22%	0.45	(4.06)	0.1%	36	9%	-3%	0.05	0.94	-11.0%	-3.8%	0.067	0.047	0.11%
Ajial Real Estate Entertainment	0.147	-0.006	-3.92%	0.23	14.21	0.0%	28	2%	-15%	0.00	0.03	1.6%	1.4%	0.213	0.115	0.09%
Injazzat Real Estate Development	0.077	0.000	0.00%	0.49	(3.69)	9.0%	26	-3%	-4%	0.00	0.00	-13.4%	-7.0%	0.091	0.061	0.08%

DAILY MARKET COVERAGE REPORT

NIC MENA SECURITIES - RESEARCH AND STUDIES DEP



Real estate Company	Price			Valuation Multiples			MKT Cap	Price Performance		Trading Indicators		ROE	ROA	52 Week (KD)		MKT Cap
	Close (KD)	Day Δ	Day % Δ	PBV(X)	PE(X)	DY%	Mn KD	MTD(%)	YTD (%)	Value (Mn KD)	(Mn Shrs)	(%)	(%)	High	Low	%
Munshaat Real Estate Projects	0.072	-0.001	-1.37%	0.49	26.53	2.9%	23	2%	-3%	0.00	0.01	1.8%	0.7%	0.090	0.045	0.07%
Aayan Real Estate	0.058	-0.001	-2.36%	0.34	11.35	8.2%	24	-1%	-21%	0.02	0.32	3.0%	1.9%	0.080	0.048	0.07%
Al Argan International Real Estate	0.089	0.000	0.00%	0.26	28.88	5.5%	23	-4%	-15%	0.00	0.00	0.9%	0.3%	0.135	0.060	0.07%
Al-Enmaa Real Estate	0.052	-0.001	-1.33%	0.52	13.75	0.0%	23	12%	-16%	0.01	0.18	3.8%	2.4%	0.079	0.037	0.07%
Ream Real Estate	0.108	0.000	0.00%	0.82	(4.34)	2.0%	12	-47%	23%	0.00	0.00	-19.0%	-10.1%	0.204	0.060	0.04%
Arkan Al Kuwait Real Estate	0.089	0.000	0.00%	0.63	9.64	8.8%	22	9%	0%	0.00	0.00	6.6%	3.5%	0.100	0.076	0.07%
Kuwait Business Town Real Estate	0.033	0.000	1.21%	0.31	8.53	0.2%	21	14%	-24%	0.02	0.46	3.6%	2.7%	0.046	0.022	0.06%
Dalqan Real Estate	0.318	0.000	0.00%	2.91	58.98	0.0%	19	0%	0%	0.00	0.00	4.9%	4.9%	0.318	0.318	0.06%
Sokouk Holding	0.028	0.000	-0.72%	0.34	(4.63)	0.0%	16	1%	-21%	0.02	0.89	-7.4%	-4.7%	0.040	0.022	0.05%
Tijara and Realestate Investment	0.047	0.000	0.00%	0.44	12.42	4.2%	17	17%	-6%	0.00	0.00	3.6%	1.9%	0.055	0.034	0.05%
Al-Arabiya Real Estate	0.028	0.000	-0.71%	0.24	8.49	2.2%	14	6%	-5%	0.00	0.07	2.9%	1.1%	0.033	0.020	0.04%
Aqar Real Estate Investments	0.060	0.000	0.00%	0.44	5.02	8.2%	13	1%	-25%	0.00	0.00	8.7%	7.3%	0.089	0.058	0.04%
Mashaer Holding	0.061	0.000	0.00%	0.46	6.51	0.0%	11	3%	-23%	0.01	0.18	7.1%	5.0%	0.086	0.048	0.03%
Investors Holding Group	0.019	-0.001	-2.60%	0.94	(0.89)	0.0%	12	20%	136%	0.25	13.02	-106.5%	-57.2%	0.032	0.007	0.04%
Dar Al Thuraya Real Estate	0.072	0.003	4.67%	0.68	18.90	0.0%	11	-1%	2%	0.00	0.04	3.6%	3.6%	0.190	0.040	0.03%
Osos Holding Group	0.091	0.001	0.56%	0.72	6.83	10.5%	10	4%	-9%	0.00	0.01	10.5%	7.0%	0.118	0.081	0.03%
Al Massaleh Real Estate	0.037	-0.001	-2.37%	0.42	(5.16)	0.0%	9	7%	0%	0.00	0.08	-8.1%	-1.9%	0.040	0.026	0.03%
Abyaar Real Estate Development	0.007	0.000	0.00%	0.21	(0.51)	0.0%	8	0%	-6%	0.00	0.00	-40.9%	-12.4%	0.013	0.005	0.02%
Kuwait Remal Real Estate	0.022	0.000	0.00%	0.33	(3.02)	0.0%	7	9%	-10%	0.00	0.00	-11.0%	-3.9%	0.027	0.013	0.02%
Kuwait Real Estate Holding	0.026	0.000	0.76%	0.04	0.70	6.7%	5	2%	-8%	0.00	0.16	5.5%	2.2%	0.034	0.022	0.02%
Taameer Real Estate Investment	0.022	0.000	-1.80%	0.32	(4.61)	0.0%	5	17%	-18%	0.09	4.30	-7.0%	-4.5%	0.034	0.013	0.02%
Sanam Real Estate	0.031	0.003	9.82%	0.40	42.39	0.0%	4	-11%	-22%	0.00	0.00	0.9%	0.9%	0.043	0.027	0.01%
Mena Real Estate	0.031	0.000	0.33%	0.21	(68.20)	0.0%	4	9%	-26%	0.04	1.43	-0.3%	-0.2%	0.043	0.021	0.01%
Al Masaken International Real Estate Developr	0.029	0.000	0.00%	0.32	34.66	0.6%	3	-20%	-35%	0.02	0.61	0.9%	0.4%	0.074	0.026	0.01%
Real Estate Trade Centers	0.031	0.000	-0.96%	0.17	177.12	0.0%	4	15%	34%	0.00	0.02	0.1%	0.1%	0.050	0.018	0.01%
Ajwan Gulf Real Estate	0.011	0.000	0.00%	0.19	(7.68)	0.0%	2	0%	-29%	0.00	0.00	-2.5%	-2.2%	0.016	0.009	0.01%
Effect Real Estate	0.021	0.000	0.00%	0.29	(8.85)	4.9%	2	0%	0%	0.00	0.00	-3.3%	-3.2%	0.021	0.021	0.01%
Al Mudon International Real Estate	0.016	0.000	0.00%	0.12	(8.22)	0.0%	2	0%	-35%	0.00	0.00	-1.5%	-1.4%	0.029	0.015	0.00%
Total Real estate - 39 Companies				0.65	23.29	2.4%	1,989			3.71	37.71	2.79%	2.96%			6.04%

DAILY MARKET COVERAGE REPORT

NIC MENA SECURITIES - RESEARCH AND STUDIES DEP



Technology	Price			Valuation Multiples			MKT Cap	Price Performance		Trading Indicators		ROE	ROA	52 Week (KD)		MKT Cap
	Company	Close (KD)	Day Δ	Day % Δ	PBV(X)	PE(X)		DY%	Mn KD	MTD(%)	YTD (%)			Value (Mn KD)	(Mn Shrs)	
Automated Systems	0.070	-0.001	-1.96%	0.55	(67.90)	5.7%	7	1%	0%	0.00	0.02	-0.8%	-0.7%	0.087	0.051	0.02%
Total Technology - 1 Companies				0.55	(67.90)	5.7%	7			0.00	0.02	-0.81%	-0.73%			0.02%

Telecom	Price			Valuation Multiples			MKT Cap	Price Performance		Trading Indicators		ROE	ROA	52 Week (KD)		MKT Cap
	Company	Close (KD)	Day Δ	Day % Δ	PBV(X)	PE(X)		DY%	Mn KD	MTD(%)	YTD (%)			Value (Mn KD)	(Mn Shrs)	
Mobile Telecommunications	0.614	-0.002	-0.32%	2.05	12.25	5.1%	2,657	7%	3%	2.00	3.26	16.7%	4.6%	0.629	0.407	8.06%
Kuwait Telecommunications	0.855	0.000	0.00%	1.98	9.79	4.1%	427	2%	9%	0.06	0.07	20.2%	11.1%	0.870	0.680	1.30%
National Mobile Telecommunications	0.626	-0.001	-0.16%	0.55	10.41	10.3%	314	4%	-24%	0.03	0.05	5.3%	2.4%	0.835	0.550	0.95%
AAN Digital Services	0.013	0.000	0.00%	0.40	43.71	0.0%	12	4%	-1%	0.29	21.99	0.9%	0.7%	0.021	0.009	0.04%
Hayat Communications	0.058	0.000	0.00%	0.50	24.74	0.0%	5	0%	-22%	0.00	0.00	2.0%	0.8%	0.098	0.033	0.02%
Telecom - 5 Companies				1.61	11.73	5.4%	3,414			2.38	25.37	13.70%	7.86%			10.36%

Utilities	Price			Valuation Multiples			MKT Cap	Price Performance		Trading Indicators		ROE	ROA	52 Week (KD)		MKT Cap
	Company	Close (KD)	Day Δ	Day % Δ	PBV(X)	PE(X)		DY%	Mn KD	MTD(%)	YTD (%)			Value (Mn KD)	(Mn Shrs)	
Shamal Az-Zour Al-Oula Power & Water	0.327	0.001	0.31%	4.69	29.24	0.0%	360	2%	0%	1.59	4.86	16.1%	2.3%	0.500	0.297	1.09%
Total Utilities - 1 Companies				4.69	29.24	0.0%	360			1.59	4.86	16.06%	2.26%			1.09%

Total Market 173 Companies				1.31	15.91	3.70%	32,951			50.01	333.53	8.26%	2.76%			100%
-----------------------------------	--	--	--	-------------	--------------	--------------	---------------	--	--	--------------	---------------	--------------	--------------	--	--	-------------

End of Report

The information contained in this document is proprietary to NIC and is for use only by the persons to whom it is issued. This document is confidential and may not be distributed either in part or in whole without the express agreement of NIC. It is intended solely for the use of the individual or entity to whom it is addressed and others authorized to receive it.

Note : ROE and ROA is calculated based on LTM net profit & shareholders' equity and LTM Operating Profits & Total Assets

Sources : National Investments Company Research and Studies Departments



شركة الاستثمار الوطنية
NATIONAL INVESTMENTS COMPANY

Sharq, Al Mutanabi Street, Khaleejia Tower | P.O. Box 25667, Safat 13117, Kuwait

T.: +965 2226 6666 | Fax: +965 2226 6793 | www.nic.com.kw