



شركة الاستثمارات الوطنية
NATIONAL INVESTMENTS COMPANY

Boursa Kuwait – Daily Market Report
MENA Securities – Research & Studies Dep.

Tuesday, October 13, 2020

DAILY MARKET COVERAGE REPORT

NIC MENA SECURITIES - RESEARCH AND STUDIES DEP



Index	Close	DTD Chg Net	DTD (%)	YTD (%)	52W High	52W Low	MKT CAP Bn (KD)	PBV (X)	PE (X)	DY (%)
All Share Index	5,762.04	-16.78	-0.29%	-8.2%	6,416.43	4,339.58	33.40	1.33	16.13	3.65%
Premier Index	6,413.48	-25.56	-0.40%	-7.9%	7,172.32	4,498.65	25.05	1.81	15.05	3.34%
Main Index	4,465.53	1.39	0.03%	-9.1%	4,932.47	3,965.63	8.35	0.75	20.54	4.57%
NIC 50 Index	7,074.78	-21.25	-0.30%	-5.1%	7,517.86	5,014.61	28.82	1.58	15.68	3.46%

Index	Value Mn(KD)	Volume (Mn share)
All Share Index	69.64	387.21
Premier Index	53.12	125.95
Main Index	16.52	261.27
NIC 50 Index	66.01	288.39

Today's Top 5 Gainer %	Close KD	Value KD	DTD (%)
Kuwait Syrian Holding Co	0.034	90,765	14.73%
Alimtiq Investment Group	0.110	3,278,057	8.91%
Al Mazaya Holding	0.062	521,305	6.35%
National Industries Group Hold	0.202	4,152,169	4.66%
Metal and Recycling	0.039	19	4.58%

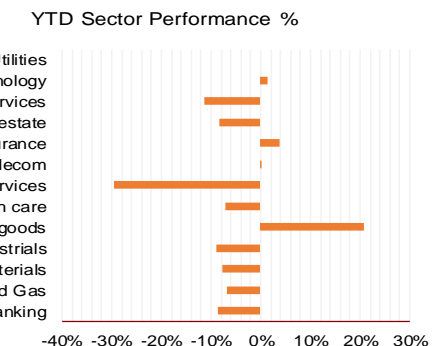
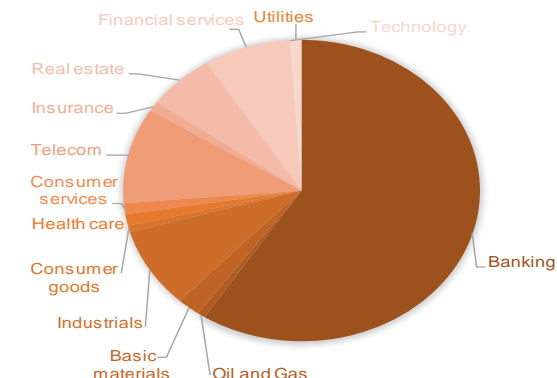
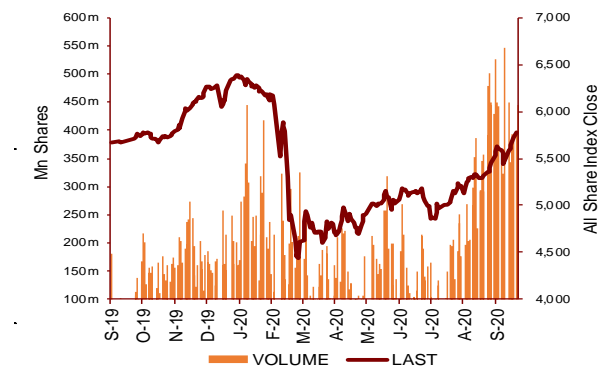
Today's Top 5 by Value	Close KD	Trade Val Mn(KD)	DTD (%)
National Bank of Kuwait	0.902	13.38	-1.20%
Kuwait Finance House	0.710	7.55	-0.28%
Ahli United Bank BSC	0.257	5.64	0.78%
Mobile Telecommunications	0.617	4.31	-1.12%
National Industries Group Hold	0.202	4.15	4.66%

Sector	Close	DTD Chg Net	DTD (%)	YTD (%)	52W High	52W Low	MKT CAP Bn (KD)	PBV (X)	PE (X)	DY (%)
Banking	1,355.91	-4.050	-0.30%	-8.5%	1,536.8	986.4	19.76	1.79	16.47	3.2%
Oil and Gas	1,153.94	-6.390	-0.55%	-6.8%	1,372.2	985.7	0.23	0.84	27.01	5.2%
Basic materials	838.31	6.990	0.84%	-7.7%	980.7	561.7	0.70	1.01	15.41	7.2%
Industrials	843.49	-5.950	-0.70%	-9.1%	937.5	602.9	2.88	0.91	13.72	4.8%
Consumer goods	770.08	0.950	0.12%	20.9%	810.7	548.6	0.23	1.53	93.33	2.2%
Health care	821.04	0.000	0.00%	-7.2%	911.8	815.0	0.41	4.15	48.14	1.0%
Consumer services	754.93	0.270	0.04%	-29.6%	1,083.1	674.8	0.39	0.89	37.27	4.5%
Telecom	1,117.45	-9.900	-0.88%	0.1%	1,134.2	802.2	3.42	1.61	11.76	5.4%
Insurance	991.30	-10.740	-1.07%	3.9%	1,068.3	901.0	0.35	0.75	8.41	5.9%
Real estate	969.01	-5.970	-0.61%	-8.5%	1,083.4	763.2	2.04	0.67	23.87	2.4%
Financial services	959.22	9.280	0.98%	-11.3%	1,097.0	801.4	2.62	0.75	16.95	4.0%
Technology	522.34	5.810	1.12%	1.4%	632.9	371.0	0.01	0.56	-69.64	5.6%
Utilities	860.53	-5.260	-0.61%	0.0%	1,042.1	781.6	0.36	4.69	29.24	0.0%
	5,762.04	-16.78	-0.29%	-8.2%	6,416.4	4,339.6	33.40	1.33	16.13	3.65%

Market Breadth	UP	Down	No Chg
All Share Index	51	58	64
Premier Index	9	10	1
Main Index	42	48	63
NIC 50 Index	23	16	11

Today's Top 5 Loser %	Close KD	Value KD	DTD (%)
Dar Al Thuraya Real Estate	0.063	32	-9.64%
Ream Real Estate	0.192	0	-5.88%
Kuwait Hotels	0.095	10	-5.00%
Sanam Real Estate	0.030	105	-4.76%
Ajial Real Estate Entertainr	0.148	14,996	-4.52%

Top 5 by Volume	Close KD	Trade Vol Mn(Shrs)	DTD (%)
Taameer Real Estate Invest	0.021	35.38	1.92%
Alimtiq Investment Group	0.110	30.72	8.91%
Investors Holding Group	0.020	23.89	-0.99%
Ahli United Bank BSC	0.257	22.06	0.78%
National Industries Group H	0.202	21.08	4.66%



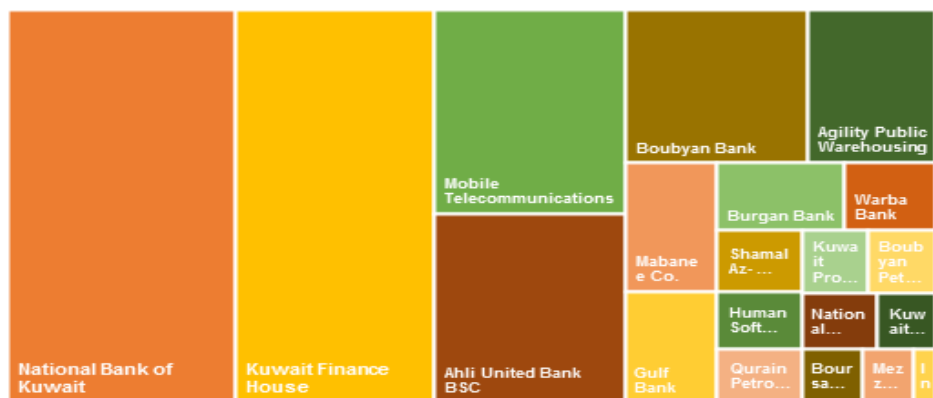
DAILY MARKET COVERAGE REPORT

NIC MENA SECURITIES - RESEARCH AND STUDIES DEP

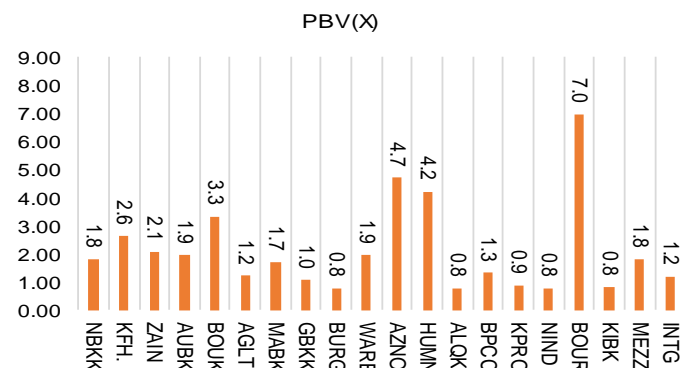


Premier Market	Price			Valuation Multiples			MKT Cap	Price Performance		Trading Indicators		ROE	ROA	52 Week (KD)		MKT Cap
	Close (KD)	Day Δ	Day % Δ	PBV(X)	PE(X)	DY%	Mn KD	MTD(%)	YTD (%)	Value (Mn KD)	(Mn Shrs)	(%)	(%)	High	Low	%
National Bank of Kuwait	0.902	-0.011	-1.20%	1.78	15.26	3.5%	6,126	5%	-10%	13.38	14.77	11.7%	1.4%	1.062	0.654	24.45%
Kuwait Finance House	0.710	-0.002	-0.28%	2.62	21.46	2.3%	5,388	8%	-3%	7.55	10.64	12.2%	1.3%	0.761	0.473	21.51%
Mobile Telecommunications	0.617	-0.007	-1.12%	2.06	12.31	5.0%	2,670	9%	4%	4.31	6.99	16.7%	4.6%	0.629	0.407	10.66%
Ahli United Bank BSC	0.257	0.002	0.78%	1.94	11.32	4.7%	2,481	9%	-13%	5.64	22.06	17.1%	1.8%	0.311	0.160	9.90%
Boubyan Bank	0.634	0.006	0.96%	3.34	30.64	1.0%	1,920	6%	3%	2.63	4.15	10.9%	1.2%	0.638	0.380	7.66%
Agility Public Warehousing	0.697	-0.009	-1.27%	1.21	15.37	2.6%	1,334	7%	-1%	3.48	4.99	7.9%	4.2%	0.748	0.357	5.32%
Mabane Co.	0.730	-0.010	-1.35%	1.71	14.30	1.4%	807	1%	-13%	1.48	2.03	11.9%	5.8%	0.877	0.434	3.22%
Gulf Bank	0.240	-0.001	-0.41%	1.05	10.95	4.2%	697	10%	-20%	2.73	11.38	9.6%	1.0%	0.317	0.180	2.78%
Burgan Bank	0.226	0.001	0.44%	0.79	6.99	5.1%	592	11%	-26%	0.47	2.09	11.3%	1.2%	0.324	0.175	2.36%
Warba Bank	0.268	-0.005	-1.83%	1.94	25.52	0.0%	422	8%	2%	1.56	5.79	7.6%	0.5%	0.279	0.164	1.69%
Shamal Az-Zour Al-Oula Power & Water	0.327	-0.002	-0.61%	4.69	29.24	0.0%	360	2%	0%	0.78	2.39	16.1%	2.3%	0.500	0.297	1.44%
Human Soft Holding	2.780	0.015	0.54%	4.21	9.43	6.6%	338	6%	-8%	0.86	0.31	44.6%	30.3%	3.470	1.944	1.35%
Qurain Petrochemical Industries	0.311	0.003	0.97%	0.76	11.25	4.9%	318	12%	-1%	0.50	1.61	6.7%	3.6%	0.323	0.163	1.27%
Boubyan Petrochemical	0.584	0.006	1.04%	1.32	24.91	8.8%	295	5%	-13%	0.11	0.18	5.3%	2.1%	0.779	0.395	1.18%
Kuwait Projects Company Holding	0.163	0.001	0.62%	0.87	9.84	5.7%	295	7%	-25%	0.66	4.10	8.9%	0.3%	0.225	0.147	1.18%
National Industries Group Holding	0.202	0.009	4.66%	0.76	6.22	5.3%	288	22%	-16%	4.15	21.08	12.3%	3.7%	0.247	0.121	1.15%
Boursa Kuwait Securities Co	1.112	-0.009	-0.80%	6.95	23.28	0.0%	223	-2%	0%	0.25	0.23	29.9%	26.5%	1.210	0.990	0.89%
Kuwait International Bank	0.222	0.000	0.00%	0.81	13.20	4.5%	226	19%	-15%	2.35	10.64	6.1%	0.6%	0.270	0.162	0.90%
Mezzan Holding	0.621	0.003	0.49%	1.79	33.56	2.7%	189	-1%	24%	0.11	0.18	5.3%	2.2%	0.665	0.428	0.75%
Integrated Holding	0.370	-0.002	-0.54%	1.19	10.31	10.8%	81	3%	-33%	0.12	0.32	11.5%	8.5%	0.600	0.342	0.32%
Total		-25.56	-0.40%	1.81	15.05	3.34%	25,050	6.7%	-7.9%	53.12	125.95	12.01%	1.56%			100%

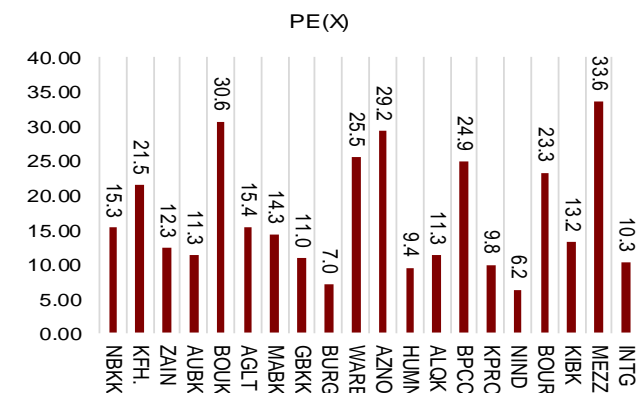
Market Capitalization



Price to Book Value

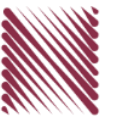


Price to Earning Value

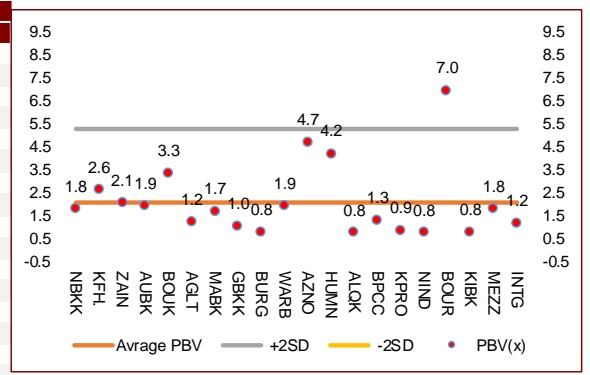


DAILY MARKET COVERAGE REPORT

NIC MENA SECURITIES - RESEARCH AND STUDIES DEP



Premier Market Company	Price			Valuation Multiples			MKT Cap Mn KD	Price Performance		ROE (%)	ROA (%)
	Close (KD)	Day Δ	Day % Δ	PBV(X)	PE(X)	DY%		MTD(%)	YTD (%)		
National Bank of Kuwait	0.902	-0.011	-1.20%	1.78	15.3	3.5%	6,126	4.9%	-10.4%	11.7%	1.4%
Kuwait Finance House	0.710	-0.002	-0.28%	2.62	21.5	2.3%	5,388	7.7%	-3.4%	12.2%	1.3%
Mobile Telecommunications	0.617	-0.007	-1.12%	2.06	12.3	5.0%	2,670	8.7%	4.0%	16.7%	4.6%
Ahli United Bank BSC	0.257	0.002	0.78%	1.94	11.3	4.7%	2,481	9.0%	-13.2%	17.1%	1.8%
Boubyan Bank	0.634	0.006	0.96%	3.34	30.6	1.0%	1,920	5.5%	2.9%	10.9%	1.2%
Agility Public Warehousing	0.697	-0.009	-1.27%	1.21	15.4	2.6%	1,334	7.5%	-0.7%	7.9%	4.2%
Mabane Co.	0.730	-0.010	-1.35%	1.71	14.3	1.4%	807	1.4%	-13.3%	11.9%	5.8%
Gulf Bank	0.240	-0.001	-0.41%	1.05	11.0	4.2%	697	9.5%	-20.5%	9.6%	1.0%
Burgan Bank	0.226	0.001	0.44%	0.79	7.0	5.1%	592	11.4%	-26.0%	11.3%	1.2%
Warba Bank	0.268	-0.005	-1.83%	1.94	25.5	0.0%	422	7.6%	2.3%	7.6%	0.5%
Shamal Az-Zour Al-Oula Power & Water	0.327	-0.002	-0.61%	4.69	29.2	0.0%	360	2.2%	0.0%	16.1%	2.3%
Human Soft Holding	2.780	0.015	0.54%	4.21	9.4	6.6%	338	6.3%	-8.2%	44.6%	30.3%
Qurain Petrochemical Industries	0.311	0.003	0.97%	0.76	11.3	4.9%	318	12.4%	-0.6%	6.7%	3.6%
Boubyan Petrochemical	0.584	0.006	1.04%	1.32	24.9	8.8%	295	5.3%	-13.3%	5.3%	2.1%
Kuwait Projects Company Holding	0.163	0.001	0.62%	0.87	9.8	5.7%	295	7.3%	-25.0%	8.9%	0.3%
National Industries Group Holding	0.202	0.009	4.66%	0.76	6.2	5.3%	288	21.7%	-16.2%	12.3%	3.7%
Boursa Kuwait Securities Co	1.112	-0.009	-0.80%	6.95	23.3	0.0%	223	-2.1%	0.0%	29.9%	26.5%
Kuwait International Bank	0.222	0.000	0.00%	0.81	13.2	4.5%	226	19.4%	-14.9%	6.1%	0.6%
Mezzan Holding	0.621	0.003	0.49%	1.79	33.6	2.7%	189	-0.8%	23.6%	5.3%	2.2%
Integrated Holding	0.370	-0.002	-0.54%	1.19	10.3	10.8%	81	3.1%	-32.8%	11.5%	8.5%
Total		-25.56	-0.40%	1.81	15.05	3.34%	25,050	6.7%	-7.9%	12.01%	1.56%



Premier Market Discription	Price			Moving Average			RSI	MKT Cap Mn KD	Price Performance		52 Week (KD)	
	Close (KD)	Day Δ	Day % Δ	50 Day	200 Day	14 Day			MTD(%)	YTD (%)	High	Low
Premier Index	6,413	-25.56	-0.40%	5,881	5,865	73	25,050	6.7%	-7.9%	7,172	4,499	

Top 5 Performrs (Today's Price Change)

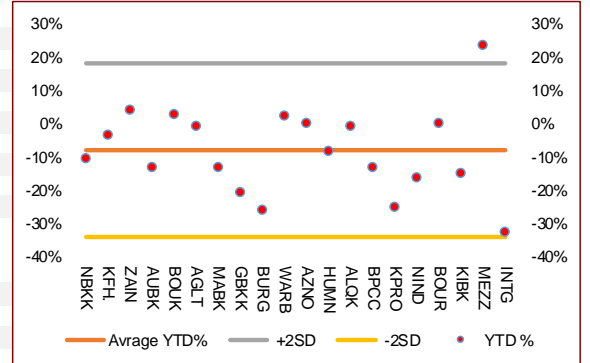
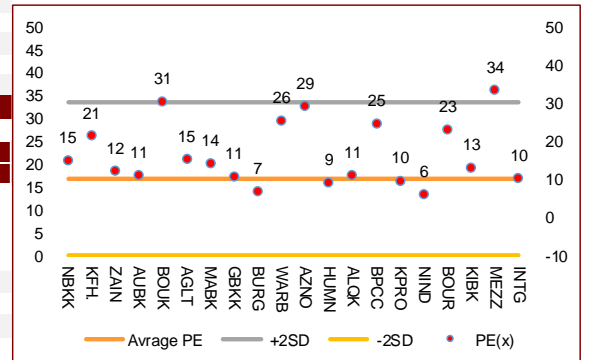
National Industries Group Holding	0.202	0.009	4.66%	0.167	0.183	73	288	21.7%	-16.2%	0.247	0.121
Boubyan Petrochemical	0.584	0.006	1.04%	0.551	0.569	61	295	5.3%	-13.3%	0.779	0.395
Qurain Petrochemical Industries	0.311	0.003	0.97%	0.283	0.266	75	318	12.4%	-0.6%	0.323	0.163
Boubyan Bank	0.634	0.006	0.96%	0.580	0.546	83	1,920	5.5%	2.9%	0.638	0.380
Ahli United Bank BSC	0.257	0.002	0.78%	0.226	0.227	72	2,481	9.0%	-13.2%	0.311	0.160

Middel Performrs (Today's Price Change)

Kuwait Projects Company Holding	0.163	0.001	0.62%	0.153	0.175	65	295	7.3%	-25.0%	0.225	0.147
Human Soft Holding	2.780	0.015	0.54%	2.658	2.782	46	338	6.3%	-8.2%	3.470	1.944
Mezzan Holding	0.621	0.003	0.49%	0.625	0.559	53	189	-0.8%	23.6%	0.665	0.428
Burgan Bank	0.226	0.001	0.44%	0.201	0.226	72	592	11.4%	-26.0%	0.324	0.175
Kuwait International Bank	0.222	0.000	0.00%	0.182	0.202	78	226	19.4%	-14.9%	0.270	0.162
Kuwait Finance House	0.710	-0.002	-0.28%	0.639	0.638	69	5,388	7.7%	-3.4%	0.761	0.473
Gulf Bank	0.240	-0.001	-0.41%	0.216	0.235	66	697	9.5%	-20.5%	0.317	0.180
Integrated Holding	0.370	-0.002	-0.54%	0.371	0.442	38	81	3.1%	-32.8%	0.600	0.342
Shamal Az-Zour Al-Oula Power & Water	0.327	-0.002	-0.61%	0.264	0.066	38	360	2.2%	0.0%	0.500	0.297
Boursa Kuwait Securities Co	1.112	-0.009	-0.80%	0.100	0.100	52	223	-2.1%	0.0%	1.210	0.996

Bottom 5 Performrs (Today's Price Change)

Warba Bank	0.268	-0.005	-1.83%	0.223	0.220	74	422	7.6%	2.3%	0.279	0.164
Mabane Co.	0.730	-0.010	-1.35%	0.678	0.682	34	807	1.4%	-13.3%	0.877	0.434
Agility Public Warehousing	0.697	-0.009	-1.27%	0.647	0.614	65	1,334	7.5%	-0.7%	0.748	0.357
National Bank of Kuwait	0.902	-0.011	-1.20%	0.856	0.846	60	6,126	4.9%	-10.4%	1.062	0.654
Mobile Telecommunications	0.617	-0.007	-1.12%	0.582	0.549	73	2,670	8.7%	4.0%	0.629	0.407



DAILY MARKET COVERAGE REPORT

NIC MENA SECURITIES - RESEARCH AND STUDIES DEP



Banking Sector	Price			Valuation Multiples			MKT Cap	Price Performance		Trading Indicators		ROE	ROA	52 Week (KD)		MKT Cap
	Company	Close (KD)	Day Δ	Day % Δ	PBV(X)	PE(X)		DY%	Mn KD	MTD(%)	YTD (%)			Value (Mn KD)	(Mn Shrs)	
National Bank of Kuwait	0.902	-0.011	-1.20%	1.78	15.26	3.5%	6,126	5%	-10%	13.38	14.77	11.7%	1.4%	1.062	0.654	18.34%
Kuwait Finance House	0.710	-0.002	-0.28%	2.62	21.46	2.3%	5,388	8%	-3%	7.55	10.64	12.2%	1.3%	0.761	0.473	16.13%
Ahli United Bank BSC	0.257	0.002	0.78%	1.94	11.32	4.7%	2,481	9%	-13%	5.64	22.06	17.1%	1.8%	0.311	0.160	7.43%
Boubyan Bank	0.634	0.006	0.96%	3.34	30.64	1.0%	1,920	6%	3%	2.63	4.15	10.9%	1.2%	0.638	0.380	5.75%
Commercial Bank of Kuwait	0.515	0.000	0.00%	1.36	0.00	3.6%	994	3%	-3%	0.00	0.00	0.0%	0.0%	0.555	0.465	2.98%
Gulf Bank	0.240	-0.001	-0.41%	1.05	10.95	4.2%	697	10%	-20%	2.73	11.38	9.6%	1.0%	0.317	0.180	2.09%
Burgan Bank	0.226	0.001	0.44%	0.79	6.99	5.1%	592	11%	-26%	0.47	2.09	11.3%	1.2%	0.324	0.175	1.77%
Ahli United Bank	0.291	0.000	0.00%	1.25	10.31	4.7%	567	7%	-11%	0.17	0.59	12.1%	1.3%	0.330	0.225	1.70%
Warba Bank	0.268	-0.005	-1.83%	1.94	25.52	0.0%	422	8%	2%	1.56	5.79	7.6%	0.5%	0.279	0.164	1.26%
Al Ahli Bank of Kuwait	0.214	0.001	0.47%	0.61	11.98	6.5%	344	15%	-16%	0.18	0.84	5.1%	0.6%	0.302	0.156	1.03%
Kuwait International Bank	0.222	0.000	0.00%	0.81	13.20	4.5%	226	19%	-15%	2.35	10.64	6.1%	0.6%	0.270	0.162	0.68%
Total Banking Sector - 11 Companies				1.79	16.47	3.2%	19,757			36.66	82.95	10.90%	1.21%			59.15%

Basic materials	Price			Valuation Multiples			MKT Cap	Price Performance		Trading Indicators		ROE	ROA	52 Week (KD)		MKT Cap
	Company	Close (KD)	Day Δ	Day % Δ	PBV(X)	PE(X)		DY%	Mn KD	MTD(%)	YTD (%)			Value (Mn KD)	(Mn Shrs)	
Qurain Petrochemical Industries	0.311	0.003	0.97%	0.76	11.25	4.9%	318	12%	-1%	0.50	1.61	6.7%	3.6%	0.323	0.163	0.95%
Boubyan Petrochemical	0.584	0.006	1.04%	1.32	24.91	8.8%	295	5%	-13%	0.11	0.18	5.3%	2.1%	0.779	0.395	0.88%
Al Kout Industrial Projects	0.731	0.000	0.00%	2.38	15.41	6.8%	74	-5%	-14%	0.00	0.00	15.4%	11.3%	0.850	0.731	0.22%
Kuwait Foundry	0.261	-0.003	-1.14%	0.87	21.09	20.4%	19	2%	-21%	0.00	0.01	4.1%	3.8%	0.429	0.192	0.06%
Total Basic materials - 4 Companies				1.01	15.41	7.2%	705			0.60	1.80	6.57%	5.07%			2.11%

Consumer goods	Price			Valuation Multiples			MKT Cap	Price Performance		Trading Indicators		ROE	ROA	52 Week (KD)		MKT Cap
	Company	Close (KD)	Day Δ	Day % Δ	PBV(X)	PE(X)		DY%	Mn KD	MTD(%)	YTD (%)			Value (Mn KD)	(Mn Shrs)	
Mezzan Holding	0.621	0.003	0.49%	1.79	33.56	2.7%	189	-1%	24%	0.11	0.18	5.3%	2.2%	0.665	0.428	0.57%
Livestock Transport and Trading	0.191	-0.003	-1.55%	1.00	34.04	0.1%	40	4%	9%	0.04	0.19	2.9%	2.0%	0.200	0.152	0.12%
Danah Al Safat Foodstuff	0.012	0.000	0.00%	0.25	(0.30)	0.1%	1	0%	-25%	0.00	0.00	-84.8%	-43.2%	0.019	0.010	0.00%
Total Basic materials - 3 Companies				1.53	93.33	2.2%	230			0.15	0.36	1.64%	0.90%			0.69%

DAILY MARKET COVERAGE REPORT

NIC MENA SECURITIES - RESEARCH AND STUDIES DEP



Consumer services																
Company	Price			Valuation Multiples			MKT Cap	Price Performance		Trading Indicators		ROE	ROA	52 Week (KD)		MKT Cap
	Close (KD)	Day Δ	Day % Δ	PBV(X)	PE(X)	DY%	Mn KD	MTD(%)	YTD (%)	Value (Mn KD)	(Mn Shrs)	(%)	(%)	High	Low	%
Jazeera Airways	0.580	-0.004	-0.68%	2.88	7.76	6.0%	116	-1%	-47%	0.20	0.35	37.1%	9.0%	1.110	0.372	0.35%
Kuwait National Cinema	0.700	0.000	0.00%	0.80	7.57	6.9%	65	0%	-33%	0.00	0.00	10.6%	7.2%	1.050	0.600	0.19%
Oula Fuel Marketing	0.117	0.002	1.74%	0.70	12.24	5.1%	47	4%	-9%	0.01	0.09	5.7%	3.2%	0.134	0.095	0.14%
Al Soor Fuel Marketing	0.116	0.002	1.75%	0.71	13.58	4.3%	47	5%	-8%	0.00	0.04	5.3%	3.7%	0.129	0.096	0.14%
Sultan Center Food Products	0.052	-0.001	-1.89%	0.65	13.09	0.0%	29	-2%	0%	0.03	0.55	4.9%	0.7%	0.060	0.036	0.09%
Jiyad Holding	0.050	0.000	0.20%	0.45	10.01	0.0%	18	25%	28%	0.12	2.41	4.5%	2.8%	0.053	0.029	0.05%
IFA Hotels and Resorts	0.024	0.000	0.83%	0.87	(0.66)	0.0%	15	3%	-56%	0.08	3.45	-131.5%	-8.1%	0.062	0.021	0.04%
Kuwait Resorts	0.057	0.000	0.35%	0.39	10.41	0.0%	11	10%	-1%	0.02	0.28	3.8%	3.2%	0.060	0.038	0.03%
Alrai Media Group	0.083	0.000	0.00%	1.86	(5.43)	0.0%	19	0%	-2%	0.00	0.00	-34.2%	-20.0%	0.093	0.069	0.06%
Future Kid Entertainment and Real Estate	0.072	0.000	0.00%	0.42	27.28	16.0%	8	-10%	-18%	0.00	0.00	1.5%	0.9%	0.110	0.069	0.02%
Al Eid Food	0.062	0.000	-0.49%	0.41	4.91	0.0%	7	7%	-7%	0.00	0.03	8.4%	6.1%	0.080	0.041	0.02%
Kuwait Hotels	0.095	-0.005	-5.00%	1.34	(5.49)	0.0%	5	-10%	-5%	0.00	0.00	-24.4%	-13.2%	0.111	0.069	0.02%
Palms Agro Production	0.079	0.000	0.00%	0.66	(55.41)	12.7%	4	21%	96%	0.00	0.00	-1.2%	-0.9%	0.079	0.025	0.01%
Kuwait Cable Vision	0.014	0.000	0.00%	0.52	(11.65)	0.0%	1	0%	0%	0.00	0.00	-4.5%	-3.0%	0.026	0.012	0.00%
Total Consumer services - 14 Companies				0.89	37.27	4.5%	393			0.46	7.18	2.38%	2.72%			1.18%

Financial services																
Company	Price			Valuation Multiples			MKT Cap	Price Performance		Trading Indicators		ROE	ROA	52 Week (KD)		MKT Cap
	Close (KD)	Day Δ	Day % Δ	PBV(X)	PE(X)	DY%	Mn KD	MTD(%)	YTD (%)	Value (Mn KD)	(Mn Shrs)	(%)	(%)	High	Low	%
Egypt Kuwait Holding	0.381	0.000	0.00%	2.26	12.86	5.1%	390	4%	-15%	0.00	0.00	17.6%	7.1%	0.500	0.318	1.17%
Kuwait Projects Company Holding	0.163	0.001	0.62%	0.87	9.84	5.7%	295	7%	-25%	0.66	4.10	8.9%	0.3%	0.225	0.147	0.88%
National Industries Group Holding	0.202	0.009	4.66%	0.76	6.22	5.3%	288	22%	-16%	4.15	21.08	12.3%	3.7%	0.247	0.121	0.86%
Boursa Kuwait Securities Co	1.112	-0.009	-0.80%	6.95	23.28	0.0%	223	-2%	0%	0.25	0.23	29.9%	26.5%	1.210	0.990	0.67%
GFH Financial Group	0.047	-0.001	-2.69%	0.51	6.41	6.0%	159	-1%	-30%	0.07	1.44	8.0%	1.3%	0.074	0.042	0.48%
National Investments	0.147	0.006	4.26%	0.65	10.93	5.5%	117	11%	7%	1.32	9.20	5.9%	5.0%	0.158	0.080	0.35%
Tamdeen Investment	0.300	-0.010	-3.23%	0.37	12.44	4.0%	103	-2%	-13%	0.01	0.03	3.0%	2.2%	0.400	0.199	0.31%
Alimtiq Investment Group	0.110	0.009	8.91%	0.52	5.73	7.2%	113	10%	-20%	3.28	30.72	9.1%	5.2%	0.137	0.071	0.34%
Commercial Facilities	0.181	0.000	0.00%	0.56	6.97	9.3%	92	-1%	-17%	0.04	0.20	8.0%	4.2%	0.235	0.179	0.28%
Aayan Leasing and Investment	0.086	0.001	0.94%	1.01	(4.72)	2.1%	69	-2%	82%	1.56	18.06	-21.4%	-4.9%	0.102	0.032	0.21%
Kuwait Investment	0.148	0.006	4.23%	0.65	4.63	6.8%	81	15%	-2%	1.83	12.50	13.9%	6.0%	0.172	0.095	0.24%
Noor Financial Investment	0.173	0.000	0.00%	1.06	8.46	2.9%	68	7%	41%	0.02	0.12	12.5%	7.5%	0.184	0.076	0.20%

DAILY MARKET COVERAGE REPORT

NIC MENA SECURITIES - RESEARCH AND STUDIES DEP



Financial services Company	Price			Valuation Multiples			MKT Cap	Price Performance		Trading Indicators		ROE	ROA	52 Week (KD)		MKT Cap
	Close (KD)	Day Δ	Day % Δ	PBV(X)	PE(X)	DY%	Mn KD	MTD(%)	YTD (%)	Value (Mn KD)	(Mn Shrs)	(%)	(%)	High	Low	%
Arzan Financial Group for Financing and Invest	0.059	0.000	0.51%	0.48	43.11	0.0%	47	5%	149%	0.71	12.12	1.1%	0.7%	0.064	0.022	0.14%
Kuwait Financial Centre	0.087	0.000	-0.23%	0.44	5.97	5.7%	42	3%	-18%	0.01	0.16	7.3%	3.5%	0.121	0.070	0.12%
Gulf Investment House	0.095	0.000	0.00%	1.07	175.72	0.0%	39	1%	48%	0.13	1.35	0.6%	0.5%	0.108	0.038	0.12%
Al Bareeq Holding	0.079	0.000	0.00%	0.82	15.68	0.0%	34	-1%	-21%	0.00	0.00	5.2%	5.0%	0.110	0.072	0.10%
Arabi Group Holdings	0.198	0.000	0.00%	1.07	(19.90)	0.0%	33	0%	-28%	0.00	0.00	-5.4%	-0.6%	0.337	0.104	0.10%
Kuwait and Middle East Financial Investment	0.114	0.002	1.79%	1.85	45.53	0.0%	30	4%	27%	0.03	0.24	4.1%	3.2%	0.138	0.063	0.09%
Privatization Holding	0.046	0.001	1.56%	0.33	(41.03)	0.0%	28	9%	-8%	0.09	2.11	-0.8%	-0.5%	0.059	0.037	0.08%
Asiya Capital Investments	0.034	0.000	0.00%	0.37	17.63	0.2%	27	7%	-16%	0.00	0.03	2.1%	2.0%	0.041	0.029	0.08%
Umm Al Qaiwain General Investment Co	0.072	0.000	0.00%	0.48	13.53	5.1%	26	0%	8%	0.01	0.08	3.6%	3.3%	0.096	0.052	0.08%
Securities House	0.047	0.000	-0.64%	0.64	(67.98)	0.0%	26	7%	2%	0.09	1.97	-0.9%	-0.7%	0.050	0.027	0.08%
KAMCO Investment	0.078	0.000	-0.39%	0.47	8.75	0.0%	27	8%	-14%	0.01	0.11	5.4%	2.3%	0.111	0.060	0.08%
First Investment	0.035	0.001	2.32%	0.55	(0.48)	0.0%	23	11%	2%	0.33	9.33	-113.6%	-62.0%	0.045	0.022	0.07%
Inovent BSC Public	0.078	0.001	0.65%	0.54	10.40	7.6%	23	3%	21%	0.07	0.93	5.2%	2.9%	0.080	0.044	0.07%
Coast Investment and Development	0.039	0.001	2.63%	0.41	38.87	0.0%	23	6%	-5%	0.05	1.23	1.1%	1.0%	0.045	0.026	0.07%
Al Madar Finance and Investment	0.084	0.001	0.84%	0.76	12.50	0.0%	17	2%	-10%	0.02	0.21	6.1%	5.0%	0.143	0.062	0.05%
Bayan Investment	0.043	-0.002	-3.59%	0.43	(22.22)	0.0%	16	-5%	17%	0.01	0.16	-1.9%	-0.8%	0.053	0.031	0.05%
Al Manar Financing and Leasing	0.049	0.000	0.20%	0.45	12.63	1.0%	15	11%	-5%	0.00	0.03	3.5%	2.7%	0.060	0.037	0.05%
Manazel Holding	0.034	0.000	-1.15%	0.75	22.11	0.0%	15	8%	-12%	0.04	1.29	3.4%	0.8%	0.048	0.021	0.04%
Kuwait Finance and Investment	0.043	0.000	-0.91%	0.34	19.49	0.0%	13	0%	-12%	0.04	0.86	1.8%	1.2%	0.058	0.038	0.04%
National International Holding	0.062	-0.002	-2.84%	0.32	7.41	4.8%	13	4%	-15%	0.00	0.08	4.4%	3.3%	0.081	0.051	0.04%
Osoul Investment	0.080	0.000	0.00%	0.60	6.72	0.0%	12	0%	7%	0.00	0.04	9.0%	8.2%	0.121	0.070	0.04%
UniCap Investment and Finance	0.045	0.001	2.27%	0.46	(22.53)	0.0%	11	6%	-18%	0.00	0.00	-2.0%	-1.0%	0.057	0.035	0.03%
Amar Finance and Leasing	0.055	0.002	3.38%	0.62	46.05	0.0%	11	-2%	45%	0.00	0.00	1.3%	1.2%	0.064	0.037	0.03%
Gulf North Africa Holding	0.060	0.000	0.00%	0.80	77.30	0.0%	9	3%	-3%	0.00	0.00	1.0%	0.6%	0.062	0.052	0.03%
Al Salam Group Holding	0.029	0.000	0.00%	0.25	215.91	0.0%	8	11%	-3%	0.05	1.88	0.1%	0.1%	0.033	0.018	0.02%
International Financial Advisors	0.031	0.000	0.00%	0.93	(0.42)	2.1%	8	0%	-42%	0.00	0.00	-222.8%	-19.3%	0.060	0.027	0.02%
Amwal International Investment	0.036	0.000	0.00%	0.66	13.12	0.0%	6	0%	18%	0.00	0.00	5.0%	2.6%	0.044	0.030	0.02%
Al Madina for Finance and Investment	0.014	0.000	2.14%	0.48	(2.69)	0.0%	6	15%	-6%	0.11	7.54	-17.9%	-7.7%	0.019	0.009	0.02%
Credit Rating and Collection	0.032	0.000	0.00%	0.97	(21.20)	0.0%	5	0%	58%	0.00	0.00	-4.6%	-4.3%	0.035	0.019	0.02%
Ektitab Holding	0.016	0.001	3.31%	0.38	(10.98)	0.0%	5	1%	4%	0.00	0.08	-3.4%	-3.0%	0.017	0.010	0.01%
Kuwait Syrian Holding Co	0.034	0.004	14.73%	0.29	(17.12)	0.0%	6	24%	6%	0.09	2.89	-1.7%	-1.1%	0.043	0.022	0.02%
Warba Capital Holding	0.046	0.000	-0.43%	0.51	(7.28)	0.0%	5	-2%	-29%	0.02	0.36	-7.0%	-6.2%	0.070	0.042	0.01%
National Consumer Holding	0.048	0.000	0.00%	0.53	235.16	0.0%	4	0%	-13%	0.00	0.00	0.2%	0.2%	0.100	0.010	0.01%
Al Deera Holding	0.016	0.000	0.00%	0.70	(9.02)	0.0%	3	0%	-20%	0.00	0.00	-7.7%	-1.7%	0.022	0.011	0.01%
Al Mal Investment Company	0.009	0.000	-1.09%	0.40	(0.85)	0.0%	3	2%	-8%	0.01	0.79	-47.6%	-23.3%	0.016	0.008	0.01%
Gulf Franchising Holding	0.050	0.000	0.00%	0.78	(2.16)	0.0%	2	4%	-34%	0.00	0.00	-36.2%	-10.8%	0.148	0.016	0.01%
Tamkeen Holding	0.005	0.000	0.00%	0.05	(7.18)	0.0%	0	0%	0%	0.00	0.00	-0.7%	-0.7%	0.005	0.005	0.00%
Total Financial services - 49 Companies				0.75	16.95	4.0%	2,618			15.11	143.53	4.42%	4.14%			7.84%

DAILY MARKET COVERAGE REPORT

NIC MENA SECURITIES - RESEARCH AND STUDIES DEP



Health care	Price			Valuation Multiples			MKT Cap	Price Performance		Trading Indicators		ROE	ROA	52 Week (KD)		MKT Cap
Company	Close (KD)	Day Δ	Day % Δ	PBV(X)	PE(X)	DY%	Mn KD	MTD(%)	YTD (%)	Value (Mn KD)	(Mn Shrs)	(%)	(%)	High	Low	%
Al-Maidan Clinic for Oral Health Services	1.220	0.000	0.00%	7.90	47.78	0.6%	305	0%	0%	0.00	0.00	16.5%	10.9%	1.240	1.220	0.91%
Advanced Technology	0.600	0.000	0.00%	1.56	48.85	2.5%	90	1%	-26%	0.00	0.00	3.2%	0.7%	0.900	0.580	0.27%
Yiaco Medical	0.707	0.000	0.00%	6.06	52.72	0.0%	12	0%	0%	0.00	0.00	11.5%	0.6%	0.707	0.707	0.04%
Total Health care - 3 Companies				4.15	48.14	1.0%	407			0.00	0.00	8.61%	4.68%			1.22%

Industrials	Price			Valuation Multiples			MKT Cap	Price Performance		Trading Indicators		ROE	ROA	52 Week (KD)		MKT Cap
Company	Close (KD)	Day Δ	Day % Δ	PBV(X)	PE(X)	DY%	Mn KD	MTD(%)	YTD (%)	Value (Mn KD)	(Mn Shrs)	(%)	(%)	High	Low	%
Agility Public Warehousing	0.697	-0.009	-1.27%	1.21	15.37	2.6%	1,334	7%	-1%	3.48	4.99	7.9%	4.2%	0.748	0.357	3.99%
Human Soft Holding	2.780	0.015	0.54%	4.21	9.43	6.6%	338	6%	-8%	0.86	0.31	44.6%	30.3%	3.470	1.944	1.01%
ALAFCO Aviation Lease and Finance	0.167	0.001	0.60%	0.50	8.98	6.0%	159	6%	-39%	0.37	2.19	5.5%	1.4%	0.278	0.138	0.48%
Kuwait Cement	0.230	-0.002	-0.86%	0.78	40.82	6.5%	164	20%	-6%	0.20	0.89	1.9%	1.3%	0.265	0.144	0.49%
Gulf Cable and Electrical Industries	0.701	-0.003	-0.43%	0.84	34.77	3.9%	147	3%	44%	0.46	0.66	2.4%	2.2%	0.742	0.390	0.44%
Integrated Holding	0.370	-0.002	-0.54%	1.19	10.31	10.8%	81	3%	-33%	0.12	0.32	11.5%	8.5%	0.600	0.342	0.24%
Kuwait Portland Cement	0.768	-0.001	-0.13%	1.03	10.14	12.8%	77	2%	-22%	0.10	0.12	10.2%	8.2%	1.133	0.683	0.23%
Educational Holding Group	0.308	-0.001	-0.32%	1.78	9.75	4.9%	76	0%	-30%	0.00	0.00	18.3%	16.7%	0.475	0.228	0.23%
United Projects for Aviation Services	0.465	0.000	0.00%	0.98	7.96	4.5%	74	0%	-9%	0.00	0.00	12.3%	7.8%	0.512	0.367	0.22%
Heavy Engineering Industries and Shipbuilding	0.375	0.000	0.00%	1.08	6.02	7.8%	68	3%	-7%	0.05	0.14	18.0%	5.9%	0.419	0.298	0.20%
National Industries	0.155	-0.004	-2.52%	0.64	12.63	6.4%	54	0%	-6%	0.08	0.50	5.1%	3.8%	0.173	0.143	0.16%
ACICO Industries	0.105	0.000	0.00%	0.34	13.67	4.7%	35	4%	-21%	0.00	0.00	2.5%	0.6%	0.137	0.081	0.10%
Kuwait Company for Process Plant Constructi	0.320	-0.002	-0.62%	1.26	6.85	5.6%	34	6%	34%	0.02	0.08	18.5%	7.7%	0.337	0.175	0.10%
Ras Al Khaimah for White Cement and Constr	0.065	0.000	0.00%	0.51	19.94	8.4%	33	0%	0%	0.00	0.00	2.6%	2.0%	0.080	0.059	0.10%
Combined Group Contracting	0.189	-0.002	-1.05%	0.66	8.51	10.9%	31	11%	-23%	0.32	1.69	7.7%	1.2%	0.251	0.138	0.09%
Gulf Cement	0.033	-0.001	-3.23%	0.33	(12.04)	12.6%	27	0%	-40%	0.00	0.02	-2.7%	-2.2%	0.059	0.029	0.08%
Sharjah Cement and Industrial Development	0.042	0.000	0.00%	0.21	25.32	12.4%	26	0%	0%	0.00	0.00	0.8%	0.6%	0.060	0.042	0.08%
KGL Logistics	0.030	-0.001	-1.94%	0.23	4.94	0.1%	23	13%	-18%	0.02	0.59	4.6%	2.9%	0.043	0.023	0.07%
Kuwait and Gulf Link Transport	0.053	0.001	1.53%	0.22	16.03	0.0%	15	13%	-20%	0.00	0.05	1.4%	0.4%	0.077	0.042	0.04%
Shuaiba Industrial	0.140	0.000	0.00%	0.78	43.23	7.1%	14	8%	-10%	0.00	0.00	1.8%	1.4%	0.180	0.122	0.04%
National Cleaning	0.056	0.000	-0.35%	0.33	7.54	9.0%	12	-1%	-18%	0.00	0.02	4.4%	1.5%	0.088	0.047	0.04%
Fujairah Cement Industries	0.034	0.000	-0.29%	0.14	16.63	12.2%	12	1%	-24%	0.00	0.01	0.8%	0.4%	0.052	0.029	0.04%
Hilal Cement	0.114	0.000	0.00%	0.99	(9.37)	13.2%	12	0%	14%	0.00	0.00	-10.6%	-6.2%	0.126	0.063	0.03%
Mubarrad Holding	0.063	0.000	0.16%	0.50	10.15	7.5%	10	3%	-28%	0.01	0.21	4.9%	4.1%	0.089	0.049	0.03%
Specialities Group Holding	0.066	0.000	0.15%	0.36	7.83	0.0%	10	6%	-14%	0.02	0.38	4.5%	3.5%	0.078	0.050	0.03%
National Ranges	0.015	0.000	1.36%	0.27	(1.09)	0.0%	4	6%	49%	0.02	1.66	-24.9%	-5.3%	0.018	0.007	0.01%
Salbookh Trading	0.033	-0.001	-4.06%	0.45	(1.93)	0.0%	3	-6%	-32%	0.02	0.62	-23.2%	-15.9%	0.051	0.026	0.01%
Metal and Recycling	0.039	0.002	4.58%	0.32	(1.65)	0.0%	3	-5%	-26%	0.00	0.00	-19.7%	-10.1%	0.070	0.020	0.01%
Equipment Holding	0.016	0.001	3.80%	0.33	(189.38)	0.0%	2	-1%	-28%	0.00	0.24	-0.2%	-0.1%	0.024	0.013	0.01%
Total Industrials - 29 Companies				0.91	13.72	4.8%	2,878			6.17	15.69	6.67%	5.05%			8.62%

DAILY MARKET COVERAGE REPORT

NIC MENA SECURITIES - RESEARCH AND STUDIES DEP



Insurance	Price			Valuation Multiples			MKT Cap	Price Performance		Trading Indicators		ROE	ROA	52 Week (KD)		MKT Cap
	Company	Close (KD)	Day Δ	Day % Δ	PBV(X)	PE(X)	DY%	Mn KD	MTD(%)	YTD (%)	Value (Mn KD)	(Mn Shrs)	(%)	(%)	High	Low
Gulf Insurance Group	0.570	-0.011	-1.89%	0.98	7.95	6.5%	106	-19%	-12%	0.01	0.02	12.3%	1.7%	0.720	0.550	0.32%
Al Ahleia Insurance	0.414	0.000	0.00%	0.78	8.34	8.1%	85	4%	2%	0.00	0.00	9.4%	3.3%	0.445	0.367	0.26%
Kuwait Insurance	0.370	-0.010	-2.63%	0.61	7.17	6.4%	68	2%	12%	0.00	0.01	8.5%	4.6%	0.387	0.300	0.20%
Kuwait Reinsurance	0.223	0.000	0.00%	0.85	9.55	2.0%	45	1%	62%	0.00	0.00	8.9%	3.2%	0.223	0.126	0.14%
Bahrain Kuwait Insurance	0.200	0.000	0.00%	0.93	12.86	6.1%	28	0%	0%	0.00	0.00	7.2%	1.1%	0.200	0.200	0.09%
Warba Insurance	0.079	0.000	0.26%	0.34	11.14	0.0%	13	8%	30%	0.01	0.07	3.1%	1.0%	0.094	0.051	0.04%
First Takaful Insurance	0.040	0.000	-0.25%	0.48	5.01	0.0%	4	6%	4%	0.00	0.00	9.6%	5.9%	0.056	0.031	0.01%
Wethaq Takaful Insurance	0.022	0.000	0.46%	0.20	(27.71)	0.0%	2	-7%	-12%	0.01	0.29	-0.7%	-0.7%	0.035	0.018	0.01%
Total Insurance - 8 Companies				0.75	8.41	5.9%	353			0.02	0.38	8.86%	3.00%			1.06%

Oil and Gas	Price			Valuation Multiples			MKT Cap	Price Performance		Trading Indicators		ROE	ROA	52 Week (KD)		MKT Cap
	Company	Close (KD)	Day Δ	Day % Δ	PBV(X)	PE(X)	DY%	Mn KD	MTD(%)	YTD (%)	Value (Mn KD)	(Mn Shrs)	(%)	(%)	High	Low
National Petroleum Services	1.100	0.000	0.00%	2.62	9.38	6.4%	107	0%	-6%	0.00	0.00	27.9%	23.6%	1.389	0.903	0.32%
Independent Petroleum Group	0.430	-0.010	-2.27%	0.79	11.72	7.0%	78	0%	-11%	0.00	0.00	6.8%	2.2%	0.497	0.375	0.23%
Burgan for Well Drilling Trading and Maintenanc	0.079	0.003	3.95%	0.29	8.02	0.0%	18	2%	-1%	0.00	0.01	3.6%	1.1%	0.098	0.060	0.05%
Energy House Holding	0.023	0.000	0.00%	0.69	(3.09)	0.0%	17	14%	-1%	0.00	0.18	-22.5%	-17.0%	0.036	0.014	0.05%
Gulf Petroleum Investment	0.021	0.000	-0.95%	0.23	(6.70)	0.0%	9	14%	4%	0.12	5.95	-3.4%	-2.3%	0.023	0.012	0.03%
Senegy Holding	0.019	0.000	-2.08%	0.38	(0.79)	0.0%	4	-1%	-14%	0.00	0.02	-47.9%	-30.4%	0.027	0.014	0.01%
Total Oil and Gas - 6 Companies				0.84	27.01	5.2%	233			0.13	6.16	3.10%	2.18%			0.70%

Real estate	Price			Valuation Multiples			MKT Cap	Price Performance		Trading Indicators		ROE	ROA	52 Week (KD)		MKT Cap
	Company	Close (KD)	Day Δ	Day % Δ	PBV(X)	PE(X)	DY%	Mn KD	MTD(%)	YTD (%)	Value (Mn KD)	(Mn Shrs)	(%)	(%)	High	Low
Mabane Co.	0.730	-0.010	-1.35%	1.71	14.30	1.4%	807	1%	-13%	1.48	2.03	11.9%	5.8%	0.877	0.434	2.42%
Salhia Real Estate	0.406	0.001	0.25%	1.23	9.33	4.9%	201	2%	-3%	0.02	0.06	13.2%	5.8%	0.460	0.330	0.60%
Commercial Real Estate	0.110	0.000	0.00%	0.67	13.62	5.2%	199	9%	20%	0.05	0.41	5.0%	2.7%	0.112	0.085	0.59%
National Real Estate	0.076	0.000	0.00%	0.42	9.94	0.0%	114	1%	-13%	0.45	5.95	4.2%	2.4%	0.090	0.058	0.34%
Tamdeen Real Estate	0.261	0.000	0.00%	0.38	12.73	3.9%	105	0%	-19%	0.00	0.00	3.0%	2.2%	0.343	0.241	0.31%
Kuwait Real Estate	0.101	0.001	0.70%	0.70	12.80	0.4%	90	7%	-4%	0.39	3.84	5.5%	2.2%	0.115	0.070	0.27%
United Real Estate	0.049	-0.001	-1.02%	0.28	(7.21)	0.0%	52	0%	-21%	0.01	0.16	-3.9%	-1.2%	0.063	0.045	0.16%
First Dubai for Real Estate Development	0.044	0.000	0.46%	0.59	48.25	0.9%	44	13%	23%	0.20	4.52	1.2%	1.0%	0.055	0.027	0.13%
Al Mazaya Holding	0.062	0.004	6.35%	0.49	(4.44)	0.1%	39	22%	8%	0.52	8.84	-11.0%	-3.8%	0.067	0.047	0.12%
Ajial Real Estate Entertainment	0.148	-0.007	-4.52%	0.23	14.30	0.0%	29	3%	-14%	0.01	0.10	1.6%	1.4%	0.213	0.115	0.09%
Injazzat Real Estate Development	0.077	0.000	0.00%	0.49	(3.69)	9.0%	26	-3%	-4%	0.00	0.00	-13.4%	-7.0%	0.091	0.061	0.08%

DAILY MARKET COVERAGE REPORT

NIC MENA SECURITIES - RESEARCH AND STUDIES DEP



Real estate Company	Price			Valuation Multiples			MKT Cap	Price Performance		Trading Indicators		ROE	ROA	52 Week (KD)		MKT Cap
	Close (KD)	Day Δ	Day % Δ	PBV(X)	PE(X)	DY%	Mn KD	MTD(%)	YTD (%)	Value (Mn KD)	(Mn Shrs)	(%)	(%)	High	Low	%
Munshaat Real Estate Projects	0.074	-0.002	-2.63%	0.50	27.27	2.9%	24	3%	-1%	0.02	0.32	1.8%	0.7%	0.090	0.045	0.07%
Aayan Real Estate	0.058	0.000	0.00%	0.34	11.35	8.2%	24	1%	-19%	0.02	0.28	3.0%	1.9%	0.080	0.048	0.07%
Al Argan International Real Estate	0.089	0.000	0.00%	0.26	28.88	5.5%	23	-4%	-15%	0.00	0.00	0.9%	0.3%	0.135	0.060	0.07%
Al-Enmaa Real Estate	0.053	0.000	0.75%	0.54	14.12	0.0%	24	13%	-15%	0.03	0.53	3.8%	2.4%	0.079	0.037	0.07%
Ream Real Estate	0.192	-0.012	-5.88%	1.46	(7.72)	1.1%	21	-6%	118%	0.00	0.00	-19.0%	-10.1%	0.204	0.060	0.06%
Arkan Al Kuwait Real Estate	0.089	0.000	0.00%	0.63	9.62	8.8%	22	9%	0%	0.00	0.00	6.6%	3.5%	0.100	0.076	0.07%
Kuwait Business Town Real Estate	0.034	0.000	0.00%	0.31	8.58	0.2%	21	14%	-24%	0.02	0.47	3.6%	2.7%	0.046	0.022	0.06%
Dalqan Real Estate	0.318	0.000	0.00%	2.91	58.98	0.0%	19	0%	0%	0.00	0.00	4.9%	4.9%	0.318	0.318	0.06%
Sokouk Holding	0.028	0.000	-1.06%	0.34	(4.66)	0.0%	16	2%	-21%	0.03	1.23	-7.4%	-4.7%	0.040	0.022	0.05%
Tijara and Realestate Investment	0.048	0.000	0.00%	0.45	12.60	4.1%	18	18%	-4%	0.00	0.00	3.6%	1.9%	0.055	0.034	0.05%
Al-Arabiya Real Estate	0.028	0.000	-1.07%	0.24	8.43	2.2%	14	6%	-5%	0.05	1.66	2.9%	1.1%	0.033	0.020	0.04%
Aqar Real Estate Investments	0.063	0.002	3.11%	0.46	5.25	7.9%	13	3%	-24%	0.01	0.11	8.7%	7.3%	0.089	0.058	0.04%
Mashaer Holding	0.060	0.000	0.00%	0.46	6.46	0.0%	11	4%	-23%	0.02	0.39	7.1%	5.0%	0.086	0.048	0.03%
Investors Holding Group	0.020	0.000	-0.99%	1.01	(0.95)	0.0%	12	29%	153%	0.48	23.89	-106.5%	-57.2%	0.032	0.007	0.04%
Dar Al Thuraya Real Estate	0.063	-0.007	-9.64%	0.60	16.56	0.0%	9	-8%	-6%	0.00	0.00	3.6%	3.6%	0.190	0.040	0.03%
Osos Holding Group	0.091	0.000	0.00%	0.72	6.86	10.4%	10	5%	-9%	0.00	0.00	10.5%	7.0%	0.118	0.081	0.03%
Al Massaleh Real Estate	0.038	0.000	0.80%	0.43	(5.28)	0.0%	9	10%	2%	0.01	0.28	-8.1%	-1.9%	0.040	0.026	0.03%
Abyaar Real Estate Development	0.007	0.000	0.00%	0.21	(0.51)	0.0%	8	0%	-6%	0.00	0.00	-40.9%	-12.4%	0.013	0.005	0.02%
Kuwait Remal Real Estate	0.021	-0.001	-2.73%	0.32	(2.94)	0.0%	7	6%	-12%	0.01	0.46	-11.0%	-3.9%	0.027	0.013	0.02%
Kuwait Real Estate Holding	0.025	-0.001	-4.18%	0.04	0.67	7.1%	5	-3%	-12%	0.00	0.04	5.5%	2.2%	0.034	0.022	0.01%
Taameer Real Estate Investment	0.021	0.000	1.92%	0.31	(4.49)	0.0%	5	11%	-22%	0.74	35.38	-7.0%	-4.5%	0.034	0.013	0.01%
Sanam Real Estate	0.030	-0.002	-4.76%	0.38	40.63	0.0%	4	-14%	-25%	0.00	0.00	0.9%	0.9%	0.043	0.027	0.01%
Mena Real Estate	0.030	0.000	0.00%	0.20	(65.75)	0.0%	4	5%	-29%	0.05	1.55	-0.3%	-0.2%	0.043	0.021	0.01%
Al Masaken International Real Estate Developr	0.030	0.000	-1.33%	0.33	35.75	0.6%	3	-17%	-32%	0.29	9.48	0.9%	0.4%	0.074	0.026	0.01%
Real Estate Trade Centers	0.032	0.000	0.00%	0.17	179.98	0.0%	4	17%	36%	0.00	0.00	0.1%	0.1%	0.050	0.018	0.01%
Ajwan Gulf Real Estate	0.011	0.000	0.00%	0.19	(7.68)	0.0%	2	0%	-29%	0.00	0.00	-2.5%	-2.2%	0.016	0.009	0.01%
Effect Real Estate	0.021	0.000	0.00%	0.29	(8.85)	4.9%	2	0%	0%	0.00	0.00	-3.3%	-3.2%	0.021	0.021	0.01%
Al Mudon International Real Estate	0.016	0.000	0.00%	0.12	(8.22)	0.0%	2	0%	-35%	0.00	0.00	-1.5%	-1.4%	0.029	0.015	0.00%
Total Real estate - 39 Companies				0.67	23.87	2.4%	2,039			4.88	101.97	2.79%	2.96%			6.10%

DAILY MARKET COVERAGE REPORT

NIC MENA SECURITIES - RESEARCH AND STUDIES DEP



Technology	Price			Valuation Multiples			MKT Cap	Price Performance		Trading Indicators		ROE	ROA	52 Week (KD)		MKT Cap
	Company	Close (KD)	Day Δ	Day % Δ	PBV(X)	PE(X)		DY%	Mn KD	MTD(%)	YTD (%)			Value (Mn KD)	(Mn Shrs)	
Automated Systems	0.072	0.001	1.13%	0.56	(69.64)	5.6%	7	2%	1%	0.00	0.00	-0.8%	-0.7%	0.087	0.051	0.02%
Total Technology - 1 Companies				0.56	(69.64)	5.6%	7			0.00	0.00	-0.81%	-0.73%			0.02%

Telecom	Price			Valuation Multiples			MKT Cap	Price Performance		Trading Indicators		ROE	ROA	52 Week (KD)		MKT Cap
	Company	Close (KD)	Day Δ	Day % Δ	PBV(X)	PE(X)		DY%	Mn KD	MTD(%)	YTD (%)			Value (Mn KD)	(Mn Shrs)	
Mobile Telecommunications	0.617	-0.007	-1.12%	2.06	12.31	5.0%	2,670	9%	4%	4.31	6.99	16.7%	4.6%	0.629	0.407	7.99%
Kuwait Telecommunications	0.850	0.000	0.00%	1.97	9.73	4.1%	424	1%	8%	0.08	0.09	20.2%	11.1%	0.870	0.680	1.27%
National Mobile Telecommunications	0.625	0.000	0.00%	0.55	10.40	10.3%	313	4%	-25%	0.04	0.06	5.3%	2.4%	0.835	0.550	0.94%
AAN Digital Services	0.013	0.000	0.00%	0.39	42.73	0.0%	11	2%	-3%	0.23	17.46	0.9%	0.7%	0.021	0.009	0.03%
Hayat Communications	0.058	-0.001	-1.03%	0.49	24.53	0.0%	5	-1%	-23%	0.01	0.18	2.0%	0.8%	0.098	0.033	0.02%
Telecom - 5 Companies				1.61	11.76	5.4%	3,424			4.67	24.78	13.70%	7.86%			10.25%

Utilities	Price			Valuation Multiples			MKT Cap	Price Performance		Trading Indicators		ROE	ROA	52 Week (KD)		MKT Cap
	Company	Close (KD)	Day Δ	Day % Δ	PBV(X)	PE(X)		DY%	Mn KD	MTD(%)	YTD (%)			Value (Mn KD)	(Mn Shrs)	
Shamal Az-Zour Al-Oula Power & Water	0.327	-0.002	-0.61%	4.69	29.24	0.0%	360	2%	0%	0.78	2.39	16.1%	2.3%	0.500	0.297	1.08%
Total Utilities - 1 Companies				4.69	29.24	0.0%	360			0.78	2.39	16.06%	2.26%			1.08%

Total Market 173 Companies				1.33	16.13	3.65%	33,403			69.64	387.21	8.26%	2.76%			100%
-----------------------------------	--	--	--	-------------	--------------	--------------	---------------	--	--	--------------	---------------	--------------	--------------	--	--	-------------

End of Report

The information contained in this document is proprietary to NIC and is for use only by the persons to whom it is issued. This document is confidential and may not be distributed either in part or in whole without the express agreement of NIC. It is intended solely for the use of the individual or entity to whom it is addressed and others authorized to receive it.

Note : ROE and ROA is calculated based on LTM net profit & shareholders' equity and LTM Operating Profits & Total Assets

Sources : National Investments Company Research and Studies Departments



شركة الاستثمار الوطنية
NATIONAL INVESTMENTS COMPANY

Sharq, Al Mutanabi Street, Khaleejia Tower | P.O. Box 25667, Safat 13117, Kuwait

T.: +965 2226 6666 | Fax: +965 2226 6793 | www.nic.com.kw