



شركة الاستثمارات الوطنية
NATIONAL INVESTMENTS COMPANY

Bursa Kuwait – Daily Market Report
MENA Securities – Research & Studies Dep.

Thursday, October 22, 2020

DAILY MARKET COVERAGE REPORT

NIC MENA SECURITIES - RESEARCH AND STUDIES DEP



Index	Close	DTD Chg Net	DTD (%)	YTD (%)	52W High	52W Low	MKT CAP Bn (KD)	PBV (X)	PE (X)	DY (%)
All Share Index	5,618.43	-38.96	-0.69%	-10.5%	6,416.43	4,339.58	32.56	1.30	15.72	3.74%
Premier Index	6,230.87	-49.73	-0.79%	-10.6%	7,172.32	4,498.65	24.34	1.76	14.63	3.43%
Main Index	4,401.81	-16.88	-0.38%	-10.4%	4,932.47	3,965.63	8.22	0.73	20.22	4.64%
NIC 50 Index	6,899.87	-49.24	-0.71%	-7.5%	7,517.86	5,014.61	28.01	1.54	15.24	3.56%

Index	Value Mn(KD)	Volume (Mn share)
All Share Index	34.08	202.29
Premier Index	28.40	62.79
Main Index	5.68	139.50
NIC 50 Index	32.03	131.62

Today's Top 5 Gainer %	Close KD	Value KD	DTD (%)
National Ranges	0.017	174,593	9.87%
Alrai Media Group	0.088	25,795	5.90%
Munshaat Real Estate Projects	0.078	0	5.28%
Kuwait Insurance	0.380	14,846	5.26%
Gulf Insurance Group	0.599	1,198	4.54%

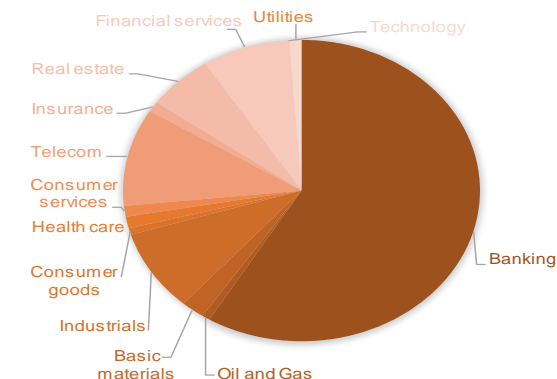
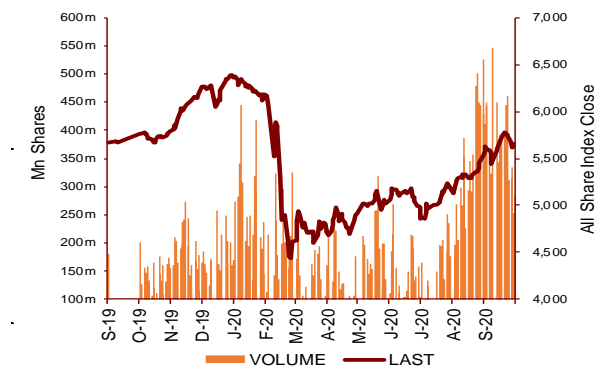
Today's Top 5 by Value	Close KD	Trade Val Mn(KD)	DTD (%)
National Bank of Kuwait	0.877	6.27	-0.90%
Kuwait Finance House	0.689	4.71	-1.01%
Mobile Telecommunications	0.611	3.25	0.00%
Gulf Bank	0.238	3.16	-1.24%
Human Soft Holding	2.991	2.01	1.32%

Sector	Close	DTD Chg Net	DTD (%)	YTD (%)	52W High	52W Low	MKT CAP Bn (KD)	PBV (X)	PE (X)	DY (%)
Banking	1,310.41	-12.600	-0.95%	-11.6%	1,536.8	986.4	19.09	1.73	15.91	3.3%
Oil and Gas	1,177.53	-0.950	-0.08%	-4.9%	1,372.2	985.7	0.24	0.86	27.56	5.1%
Basic materials	822.49	-1.890	-0.23%	-9.4%	973.0	561.7	0.69	0.99	15.12	7.3%
Industrials	836.56	-1.300	-0.16%	-9.8%	937.5	602.9	2.85	0.91	13.60	4.9%
Consumer goods	767.67	-0.250	-0.03%	20.5%	810.7	548.6	0.23	1.52	93.04	2.2%
Health care	821.04	0.000	0.00%	-7.2%	884.6	815.0	0.41	4.15	48.14	1.0%
Consumer services	746.23	-2.670	-0.36%	-30.4%	1,083.1	674.8	0.38	0.85	35.83	4.7%
Telecom	1,111.64	0.100	0.01%	-0.5%	1,134.2	802.2	3.41	1.60	11.70	5.4%
Insurance	1,006.30	14.680	1.48%	5.5%	1,068.3	901.0	0.36	0.76	8.54	5.8%
Real estate	926.34	-6.410	-0.69%	-12.5%	1,083.4	763.2	1.95	0.64	22.82	2.5%
Financial services	947.08	-9.190	-0.96%	-12.4%	1,097.0	801.4	2.59	0.74	16.74	4.0%
Technology	509.25	-8.730	-1.69%	-1.1%	632.9	371.0	0.01	0.55	-67.90	5.7%
Utilities	868.42	-2.630	-0.30%	0.0%	1,042.1	781.6	0.36	4.74	29.51	0.0%
	5,618.43	-38.96	-0.69%	-10.5%	6,416.4	4,339.6	32.56	1.30	15.72	3.74%

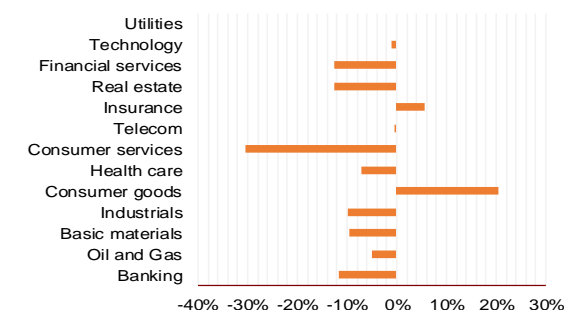
Market Breadth	UP	Down	No Chg
All Share Index	27	83	63
Premier Index	1	17	2
Main Index	26	66	61
NIC 50 Index	5	35	10

Today's Top 5 Loser %	Close KD	Value KD	DTD (%)
Kuwait Hotels	0.060	21,029	-30.07%
Ream Real Estate	0.102	3,396	-7.27%
United Real Estate	0.045	63,289	-6.44%
Real Estate Trade Centers	0.029	754	-6.07%
Future Kid Entertainment a	0.076	2	-5.00%

Top 5 by Volume	Close KD	Trade Vol Mn(Shrs)	DTD (%)
First Investment	0.037	17.40	1.39%
Gulf Bank	0.238	13.19	-1.24%
Ektitab Holding	0.016	13.02	1.88%
AAN Digital Services	0.013	12.16	-1.48%
Al Mudon International Rea	0.022	10.92	0.00%



YTD Sector Performance %



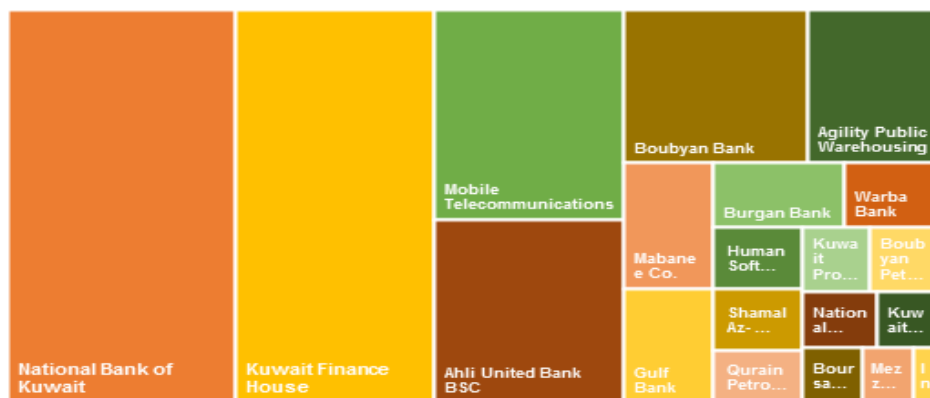
DAILY MARKET COVERAGE REPORT

NIC MENA SECURITIES - RESEARCH AND STUDIES DEP

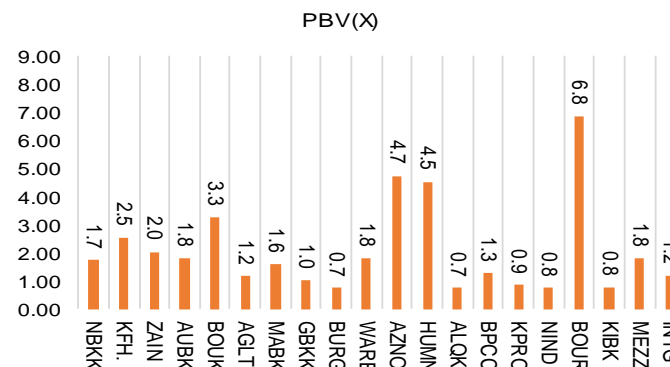


Premier Market	Price			Valuation Multiples			MKT Cap	Price Performance		Trading Indicators		ROE	ROA	52 Week (KD)		MKT Cap
	Close (KD)	Day Δ	Day % Δ	PBV(X)	PE(X)	DY%	Mn KD	MTD(%)	YTD (%)	Value (Mn KD)	(Mn Shrs)	(%)	(%)	High	Low	%
National Bank of Kuwait	0.877	-0.008	-0.90%	1.73	14.84	3.6%	5,956	1%	-14%	6.27	7.14	11.7%	1.4%	1.062	0.654	24.47%
Kuwait Finance House	0.689	-0.007	-1.01%	2.54	20.83	2.4%	5,229	5%	-6%	4.71	6.81	12.2%	1.3%	0.761	0.473	21.49%
Mobile Telecommunications	0.611	0.000	0.00%	2.04	12.19	5.1%	2,644	6%	2%	3.25	5.32	16.7%	4.6%	0.629	0.407	10.86%
Ahli United Bank BSC	0.240	-0.004	-1.64%	1.81	10.57	5.1%	2,316	3%	-18%	1.73	7.17	17.1%	1.8%	0.311	0.160	9.52%
Boubyan Bank	0.622	-0.002	-0.32%	3.27	30.06	1.0%	1,883	5%	2%	0.48	0.77	10.9%	1.2%	0.642	0.380	7.74%
Agility Public Warehousing	0.679	-0.003	-0.44%	1.18	14.98	2.7%	1,299	3%	-5%	0.89	1.31	7.9%	4.2%	0.748	0.357	5.34%
Mabane Co.	0.684	-0.004	-0.58%	1.60	13.40	1.5%	756	-7%	-20%	1.31	1.92	11.9%	5.8%	0.877	0.434	3.11%
Gulf Bank	0.238	-0.003	-1.24%	1.04	10.86	4.2%	691	9%	-21%	3.16	13.19	9.6%	1.0%	0.317	0.180	2.84%
Burgan Bank	0.214	-0.004	-1.83%	0.75	6.62	5.3%	561	6%	-29%	0.44	2.06	11.3%	1.2%	0.324	0.175	2.30%
Warba Bank	0.247	-0.002	-0.80%	1.78	23.52	0.0%	389	-1%	-6%	1.20	4.84	7.6%	0.5%	0.279	0.164	1.60%
Shamal Az-Zour Al-Oula Power & Water	0.330	-0.001	-0.30%	4.74	29.51	0.0%	363	3%	0%	0.84	2.55	16.1%	2.3%	0.500	0.297	1.49%
Human Soft Holding	2.991	0.039	1.32%	4.53	10.14	6.1%	364	15%	0%	2.01	0.67	44.6%	30.3%	3.470	1.944	1.50%
Qurain Petrochemical Industries	0.308	0.000	0.00%	0.75	11.14	5.0%	315	12%	-1%	0.05	0.17	6.7%	3.6%	0.323	0.163	1.29%
Boubyan Petrochemical	0.565	-0.003	-0.53%	1.28	24.10	9.1%	285	3%	-15%	0.02	0.04	5.3%	2.1%	0.761	0.395	1.17%
Kuwait Projects Company Holding	0.160	-0.001	-0.62%	0.86	9.66	5.8%	290	6%	-26%	0.04	0.27	8.9%	0.3%	0.224	0.147	1.19%
National Industries Group Holding	0.199	-0.004	-1.97%	0.75	6.13	5.4%	284	20%	-17%	1.02	5.11	12.3%	3.7%	0.247	0.121	1.17%
Boursa Kuwait Securities Co	1.094	-0.002	-0.18%	6.84	22.90	0.0%	220	-4%	0%	0.13	0.12	29.9%	26.5%	1.210	0.990	0.90%
Kuwait International Bank	0.216	-0.002	-0.92%	0.78	12.84	4.6%	220	17%	-17%	0.62	2.89	6.1%	0.6%	0.270	0.162	0.90%
Mezzan Holding	0.620	-0.003	-0.48%	1.79	33.50	2.7%	189	-1%	24%	0.11	0.18	5.3%	2.2%	0.665	0.428	0.78%
Integrated Holding	0.375	-0.004	-1.06%	1.20	10.44	10.7%	83	4%	-32%	0.10	0.28	11.5%	8.5%	0.600	0.342	0.34%
Total		-49.73	-0.79%	1.76	14.63	3.43%	24,336	3.6%	-10.6%	28.40	62.79	12.01%	1.56%			100%

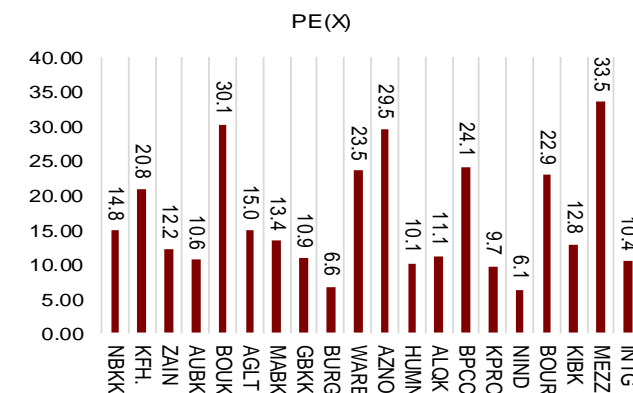
Market Capitalization



Price to Book Value

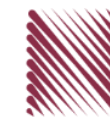


Price to Earning Value

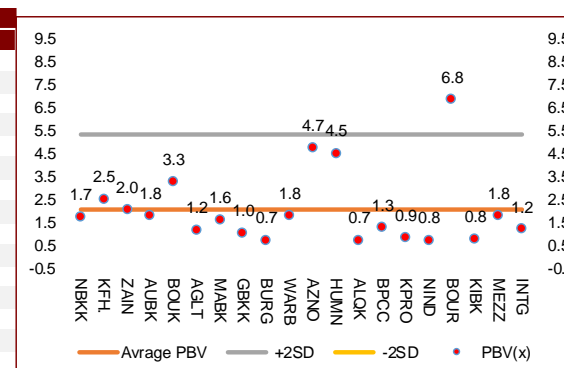


DAILY MARKET COVERAGE REPORT

NIC MENA SECURITIES - RESEARCH AND STUDIES DEP



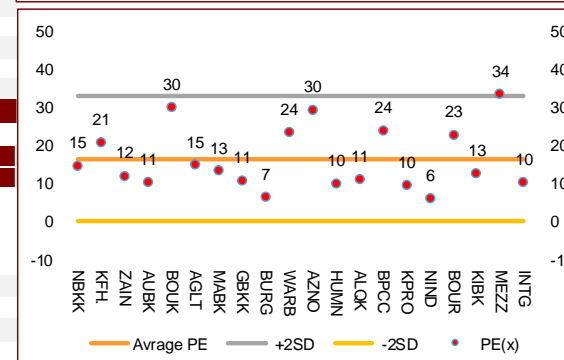
Premier Market Company	Price			Valuation Multiples			MKT Cap Mn KD	Price Performance		ROE (%)	ROA (%)
	Close (KD)	Day Δ	Day % Δ	PBV(X)	PE(X)	DY%		MTD(%)	YTD (%)		
National Bank of Kuwait	0.877	-0.008	-0.90%	1.73	14.8	3.6%	5,956	0.7%	-14.0%	11.7%	1.4%
Kuwait Finance House	0.689	-0.007	-1.01%	2.54	20.8	2.4%	5,229	4.7%	-6.1%	12.2%	1.3%
Mobile Telecommunications	0.611	0.000	0.00%	2.04	12.2	5.1%	2,644	6.4%	1.8%	16.7%	4.6%
Ahli United Bank BSC	0.240	-0.004	-1.64%	1.81	10.6	5.1%	2,316	2.6%	-18.3%	17.1%	1.8%
Boubyan Bank	0.622	-0.002	-0.32%	3.27	30.1	1.0%	1,883	4.5%	1.9%	10.9%	1.2%
Agility Public Warehousing	0.679	-0.003	-0.44%	1.18	15.0	2.7%	1,299	3.2%	-4.7%	7.9%	4.2%
Mabane Co.	0.684	-0.004	-0.58%	1.60	13.4	1.5%	756	-6.7%	-20.2%	11.9%	5.8%
Gulf Bank	0.238	-0.003	-1.24%	1.04	10.9	4.2%	691	8.6%	-21.1%	9.6%	1.0%
Burgan Bank	0.214	-0.004	-1.83%	0.75	6.6	5.3%	561	6.4%	-29.3%	11.3%	1.2%
Warba Bank	0.247	-0.002	-0.80%	1.78	23.5	0.0%	389	-0.8%	-5.7%	7.6%	0.5%
Shamal Az-Zour Al-Oula Power & Water	0.330	-0.001	-0.30%	4.74	29.5	0.0%	363	3.1%	0.0%	16.1%	2.3%
Human Soft Holding	2.991	0.039	1.32%	4.53	10.1	6.1%	364	15.3%	-0.4%	44.6%	30.3%
Qurain Petrochemical Industries	0.308	0.000	0.00%	0.75	11.1	5.0%	315	12.4%	-0.6%	6.7%	3.6%
Boubyan Petrochemical	0.565	-0.003	-0.53%	1.28	24.1	9.1%	285	2.7%	-15.4%	5.3%	2.1%
Kuwait Projects Company Holding	0.160	-0.001	-0.62%	0.86	9.7	5.8%	290	6.0%	-25.9%	8.9%	0.3%
National Industries Group Holding	0.199	-0.004	-1.97%	0.75	6.1	5.4%	284	20.5%	-17.0%	12.3%	3.7%
Boursa Kuwait Securities Co	1.094	-0.002	-0.18%	6.84	22.9	0.0%	220	-4.0%	0.0%	29.9%	26.5%
Kuwait International Bank	0.216	-0.002	-0.92%	0.78	12.8	4.6%	220	16.7%	-16.8%	6.1%	0.6%
Mezzan Holding	0.620	-0.003	-0.48%	1.79	33.5	2.7%	189	-0.6%	23.8%	5.3%	2.2%
Integrated Holding	0.375	-0.004	-1.06%	1.20	10.4	10.7%	83	4.5%	-31.9%	11.5%	8.5%
Total		-49.73	-0.79%	1.76	14.63	3.43%	24,336	3.6%	-10.6%	12.01%	1.56%



Premier Market Discription	Price			Moving Average			RSI	MKT Cap Mn KD	Price Performance		52 Week (KD)	
	Close (KD)	Day Δ	Day % Δ	50 Day	200 Day	14 Day			MTD(%)	YTD (%)	High	Low
Premier Index	6,231	-49.73	-0.79%	6,002	5,845	69	24,336	3.6%	-10.6%	7,172	4,499	

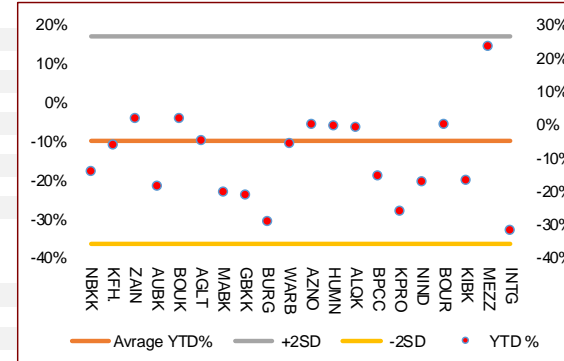
Top 5 Performrs (Today's Price Change)

Human Soft Holding	2.991	0.039	1.32%	2.697	2.776	91	364	15.3%	-0.4%	3.470	1.944
Mobile Telecommunications	0.611	0.000	0.00%	0.590	0.550	68	2,644	6.4%	1.8%	0.629	0.407
Qurain Petrochemical Industries	0.308	0.000	0.00%	0.288	0.266	77	315	12.4%	-0.6%	0.323	0.163
Boursa Kuwait Securities Co	1.094	-0.002	-0.18%	0.603	0.151	23	220	-4.0%	0.0%	1.210	0.990
Shamal Az-Zour Al-Oula Power & Water	0.330	-0.001	-0.30%	0.310	0.078	59	363	3.1%	0.0%	0.500	0.297



Middel Performrs (Today's Price Change)

Boubyan Bank	0.622	-0.002	-0.32%	0.593	0.547	65	1,883	4.5%	1.9%	0.642	0.380
Agility Public Warehousing	0.679	-0.003	-0.44%	0.653	0.614	52	1,299	3.2%	-4.7%	0.748	0.357
Mezzan Holding	0.620	-0.003	-0.48%	0.629	0.563	45	189	-0.6%	23.8%	0.665	0.428
Boubyan Petrochemical	0.565	-0.003	-0.53%	0.555	0.565	52	285	2.7%	-15.4%	0.761	0.395
Mabane Co.	0.684	-0.004	-0.58%	0.688	0.678	13	756	-6.7%	-20.2%	0.877	0.434
Kuwait Projects Company Holding	0.160	-0.001	-0.62%	0.155	0.173	67	290	6.0%	-25.9%	0.224	0.147
Warba Bank	0.247	-0.002	-0.80%	0.231	0.220	41	389	-0.8%	-5.7%	0.279	0.164
National Bank of Kuwait	0.877	-0.008	-0.90%	0.868	0.841	38	5,956	0.7%	-14.0%	1.062	0.654
Kuwait International Bank	0.216	-0.002	-0.92%	0.189	0.200	73	220	16.7%	-16.8%	0.270	0.162
Kuwait Finance House	0.689	-0.007	-1.01%	0.100	0.100	50	5,229	4.7%	-6.1%	1.210	0.996



Bottom 5 Performrs (Today's Price Change)

National Industries Group Holding	0.199	-0.004	-1.97%	0.173	0.181	78	284	20.5%	-17.0%	0.247	0.121
Burgan Bank	0.214	-0.004	-1.83%	0.206	0.223	58	561	6.4%	-29.3%	0.324	0.175
Ahli United Bank BSC	0.240	-0.004	-1.64%	0.233	0.225	45	2,316	2.6%	-18.3%	0.311	0.160
Gulf Bank	0.238	-0.003	-1.24%	0.222	0.233	61	691	8.6%	-21.1%	0.317	0.180
Integrated Holding	0.375	-0.004	-1.06%	0.371	0.436	59	83	4.5%	-31.9%	0.600	0.342

DAILY MARKET COVERAGE REPORT

NIC MENA SECURITIES - RESEARCH AND STUDIES DEP



Banking Sector		Price			Valuation Multiples			MKT Cap	Price Performance		Trading Indicators		ROE	ROA	52 Week (KD)		MKT Cap
Company	Close (KD)	Day Δ	Day % Δ	PBV(X)	PE(X)	DY%	Mn KD	MTD(%)	YTD (%)	Value (Mn KD)	(Mn Shrs)	(%)	(%)	High	Low	%	
National Bank of Kuwait	0.877	-0.008	-0.90%	1.73	14.84	3.6%	5,956	1%	-14%	6.27	7.14	11.7%	1.4%	1.062	0.654	18.29%	
Kuwait Finance House	0.689	-0.007	-1.01%	2.54	20.83	2.4%	5,229	5%	-6%	4.71	6.81	12.2%	1.3%	0.761	0.473	16.06%	
Ahli United Bank BSC	0.240	-0.004	-1.64%	1.81	10.57	5.1%	2,316	3%	-18%	1.73	7.17	17.1%	1.8%	0.311	0.160	7.11%	
Boubyan Bank	0.622	-0.002	-0.32%	3.27	30.06	1.0%	1,883	5%	2%	0.48	0.77	10.9%	1.2%	0.642	0.380	5.78%	
Commercial Bank of Kuwait	0.500	0.000	0.00%	1.32	0.00	3.7%	965	0%	-5%	0.00	0.00	0.0%	0.0%	0.555	0.465	2.96%	
Gulf Bank	0.238	-0.003	-1.24%	1.04	10.86	4.2%	691	9%	-21%	3.16	13.19	9.6%	1.0%	0.317	0.180	2.12%	
Burgan Bank	0.214	-0.004	-1.83%	0.75	6.62	5.3%	561	6%	-29%	0.44	2.06	11.3%	1.2%	0.324	0.175	1.72%	
Ahli United Bank	0.284	-0.002	-0.70%	1.22	10.07	4.8%	554	5%	-13%	0.09	0.32	12.1%	1.3%	0.330	0.225	1.70%	
Warba Bank	0.247	-0.002	-0.80%	1.78	23.52	0.0%	389	-1%	-6%	1.20	4.84	7.6%	0.5%	0.279	0.164	1.19%	
Al Ahli Bank of Kuwait	0.205	-0.002	-0.97%	0.59	11.48	6.8%	329	11%	-19%	0.10	0.49	5.1%	0.6%	0.295	0.156	1.01%	
Kuwait International Bank	0.216	-0.002	-0.92%	0.78	12.84	4.6%	220	17%	-17%	0.62	2.89	6.1%	0.6%	0.270	0.162	0.68%	
Total Banking Sector - 11 Companies				1.73	15.91	3.3%	19,094			18.81	45.69	10.90%	1.21%			58.64%	

Basic materials		Price			Valuation Multiples			MKT Cap	Price Performance		Trading Indicators		ROE	ROA	52 Week (KD)		MKT Cap
Company	Close (KD)	Day Δ	Day % Δ	PBV(X)	PE(X)	DY%	Mn KD	MTD(%)	YTD (%)	Value (Mn KD)	(Mn Shrs)	(%)	(%)	High	Low	%	
Qurain Petrochemical Industries	0.308	0.000	0.00%	0.75	11.14	5.0%	315	12%	-1%	0.05	0.17	6.7%	3.6%	0.323	0.163	0.97%	
Boubyan Petrochemical	0.565	-0.003	-0.53%	1.28	24.10	9.1%	285	3%	-15%	0.02	0.04	5.3%	2.1%	0.761	0.395	0.88%	
Al Kout Industrial Projects	0.731	0.000	0.00%	2.38	15.41	6.8%	74	-5%	-14%	0.00	0.00	15.4%	11.3%	0.850	0.731	0.23%	
Kuwait Foundry	0.252	-0.001	-0.40%	0.84	20.37	21.2%	18	-2%	-25%	0.00	0.00	4.1%	3.8%	0.409	0.192	0.06%	
Total Basic materials - 4 Companies				0.99	15.12	7.3%	692			0.07	0.20	6.57%	5.07%			2.12%	

Consumer goods		Price			Valuation Multiples			MKT Cap	Price Performance		Trading Indicators		ROE	ROA	52 Week (KD)		MKT Cap
Company	Close (KD)	Day Δ	Day % Δ	PBV(X)	PE(X)	DY%	Mn KD	MTD(%)	YTD (%)	Value (Mn KD)	(Mn Shrs)	(%)	(%)	High	Low	%	
Mezzan Holding	0.620	-0.003	-0.48%	1.79	33.50	2.7%	189	-1%	24%	0.11	0.18	5.3%	2.2%	0.665	0.428	0.58%	
Livestock Transport and Trading	0.189	0.004	2.16%	0.98	33.69	0.1%	40	3%	8%	0.00	0.00	2.9%	2.0%	0.200	0.152	0.12%	
Danah Al Safat Foodstuff	0.012	0.000	0.00%	0.25	(0.30)	0.1%	1	0%	-25%	0.00	0.00	-84.8%	-43.2%	0.019	0.010	0.00%	
Total Basic materials - 3 Companies				1.52	93.04	2.2%	230			0.11	0.18	1.64%	0.90%			0.71%	

DAILY MARKET COVERAGE REPORT

NIC MENA SECURITIES - RESEARCH AND STUDIES DEP



Consumer services																
Company	Price			Valuation Multiples			MKT Cap Mn KD	Price Performance		Trading Indicators		ROE (%)	ROA (%)	52 Week (KD)		MKT Cap %
	Close (KD)	Day Δ	Day % Δ	PBV(X)	PE(X)	DY%		MTD(%)	YTD (%)	Value (Mn KD)	(Mn Shrs)			High	Low	
Jazeera Airways	0.570	0.000	0.00%	2.83	7.63	6.1%	114	-3%	-48%	0.19	0.33	37.1%	9.0%	1.110	0.372	0.35%
Kuwait National Cinema	0.700	0.000	0.00%	0.80	7.57	6.9%	65	0%	-33%	0.00	0.00	10.6%	7.2%	1.050	0.600	0.20%
Oula Fuel Marketing	0.118	0.000	0.00%	0.71	12.35	5.0%	48	6%	-7%	0.01	0.04	5.7%	3.2%	0.134	0.095	0.15%
Al Soor Fuel Marketing	0.119	0.000	0.00%	0.73	13.93	4.2%	48	8%	-5%	0.02	0.17	5.3%	3.7%	0.129	0.096	0.15%
Sultan Center Food Products	0.049	0.000	0.20%	0.61	12.33	0.0%	28	-8%	-6%	0.01	0.22	4.9%	0.7%	0.060	0.037	0.08%
Jiyad Holding	0.049	-0.001	-1.79%	0.44	9.83	0.0%	17	23%	26%	0.04	0.73	4.5%	2.8%	0.054	0.029	0.05%
IFA Hotels and Resorts	0.023	0.000	0.00%	0.81	(0.62)	0.0%	14	-3%	-59%	0.01	0.33	-131.5%	-8.1%	0.062	0.021	0.04%
Kuwait Resorts	0.056	0.000	0.00%	0.38	10.15	0.0%	11	8%	-4%	0.03	0.47	3.8%	3.2%	0.060	0.038	0.03%
Alrai Media Group	0.088	0.005	5.90%	0.87	(2.53)	0.0%	9	6%	3%	0.03	0.29	-34.2%	-20.0%	0.093	0.069	0.03%
Future Kid Entertainment and Real Estate	0.076	-0.004	-5.00%	0.44	28.71	15.2%	8	-5%	-14%	0.00	0.00	1.5%	0.9%	0.110	0.069	0.03%
Al Eid Food	0.064	0.003	4.23%	0.43	5.11	0.0%	8	11%	-3%	0.05	0.85	8.4%	6.1%	0.080	0.043	0.02%
Kuwait Hotels	0.060	-0.026	-30.07%	0.84	(3.47)	0.0%	3	-43%	-40%	0.02	0.36	-24.4%	-13.2%	0.111	0.054	0.01%
Palms Agro Production	0.080	0.000	0.00%	0.67	(56.04)	12.5%	4	22%	98%	0.00	0.00	-1.2%	-0.9%	0.080	0.025	0.01%
Kuwait Cable Vision	0.014	0.000	0.00%	0.52	(11.65)	0.0%	1	0%	0%	0.00	0.00	-4.5%	-3.0%	0.026	0.012	0.00%
Total Consumer services - 14 Companies				0.85	35.83	4.7%	377			0.39	3.80	2.38%	2.72%			1.16%

Financial services																
Company	Price			Valuation Multiples			MKT Cap Mn KD	Price Performance		Trading Indicators		ROE (%)	ROA (%)	52 Week (KD)		MKT Cap %
	Close (KD)	Day Δ	Day % Δ	PBV(X)	PE(X)	DY%		MTD(%)	YTD (%)	Value (Mn KD)	(Mn Shrs)			High	Low	
Egypt Kuwait Holding	0.379	0.000	0.00%	2.25	12.79	5.2%	388	4%	-16%	0.00	0.00	17.6%	7.1%	0.494	0.318	1.19%
Kuwait Projects Company Holding	0.160	-0.001	-0.62%	0.86	9.66	5.8%	290	6%	-26%	0.04	0.27	8.9%	0.3%	0.224	0.147	0.89%
National Industries Group Holding	0.199	-0.004	-1.97%	0.75	6.13	5.4%	284	20%	-17%	1.02	5.11	12.3%	3.7%	0.247	0.121	0.87%
Boursa Kuwait Securities Co	1.094	-0.002	-0.18%	6.84	22.90	0.0%	220	-4%	0%	0.13	0.12	29.9%	26.5%	1.210	0.990	0.67%
GFH Financial Group	0.046	0.000	-0.22%	0.50	6.26	6.2%	155	-6%	-33%	0.02	0.38	8.0%	1.3%	0.074	0.042	0.48%
National Investments	0.137	-0.002	-1.44%	0.60	10.19	5.9%	109	3%	-1%	0.05	0.39	5.9%	5.0%	0.158	0.080	0.34%
Tamdeen Investment	0.300	-0.014	-4.46%	0.37	12.44	4.0%	103	-2%	-13%	0.02	0.05	3.0%	2.2%	0.400	0.199	0.31%
Alimtiq Investment Group	0.103	-0.002	-1.90%	0.49	5.37	7.7%	106	13%	-17%	0.26	2.51	9.1%	5.2%	0.137	0.071	0.33%
Commercial Facilities	0.180	-0.001	-0.55%	0.56	6.93	9.3%	91	-1%	-17%	0.00	0.01	8.0%	4.2%	0.235	0.179	0.28%
Aayan Leasing and Investment	0.089	0.000	0.45%	1.05	(4.90)	2.0%	72	3%	91%	0.19	2.15	-21.4%	-4.9%	0.102	0.032	0.22%
Kuwait Investment	0.137	-0.005	-3.52%	0.60	4.29	7.4%	75	7%	-9%	0.20	1.41	13.9%	6.0%	0.172	0.095	0.23%
Noor Financial Investment	0.175	-0.002	-1.13%	1.07	8.56	2.8%	69	11%	47%	0.05	0.26	12.5%	7.5%	0.184	0.076	0.21%

DAILY MARKET COVERAGE REPORT

NIC MENA SECURITIES - RESEARCH AND STUDIES DEP



Financial services Company	Price			Valuation Multiples			MKT Cap	Price Performance		Trading Indicators		ROE	ROA	52 Week (KD)		MKT Cap
	Close (KD)	Day Δ	Day % Δ	PBV(X)	PE(X)	DY%	Mn KD	MTD(%)	YTD (%)	Value (Mn KD)	(Mn Shrs)	(%)	(%)	High	Low	%
Arzan Financial Group for Financing and Invest	0.059	0.000	0.00%	0.48	42.90	0.0%	47	5%	149%	0.11	1.94	1.1%	0.7%	0.064	0.022	0.14%
Kuwait Financial Centre	0.085	-0.001	-0.70%	0.43	5.84	5.8%	41	1%	-20%	0.00	0.04	7.3%	3.5%	0.121	0.070	0.12%
Gulf Investment House	0.095	-0.002	-2.36%	1.07	175.72	0.0%	39	1%	48%	0.11	1.12	0.6%	0.5%	0.108	0.038	0.12%
Al Bareeq Holding	0.081	-0.002	-2.64%	0.85	16.18	0.0%	35	2%	-19%	0.05	0.64	5.2%	5.0%	0.110	0.072	0.11%
Arabi Group Holdings	0.198	0.000	0.00%	1.07	(19.90)	0.0%	33	0%	-28%	0.00	0.00	-5.4%	-0.6%	0.337	0.185	0.10%
Kuwait and Middle East Financial Investment	0.116	0.000	0.00%	1.89	46.33	0.0%	30	5%	30%	0.00	0.01	4.1%	3.2%	0.138	0.063	0.09%
Privatization Holding	0.046	0.000	-0.44%	0.33	(41.03)	0.0%	28	9%	-8%	0.01	0.15	-0.8%	-0.5%	0.059	0.037	0.09%
Asiya Capital Investments	0.034	0.000	-0.30%	0.36	17.37	0.2%	26	5%	-18%	0.00	0.00	2.1%	2.0%	0.041	0.029	0.08%
Umm Al Qaiwain General Investment Co	0.072	-0.003	-4.00%	0.48	13.53	5.1%	26	0%	8%	0.00	0.01	3.6%	3.3%	0.096	0.052	0.08%
Securities House	0.045	-0.001	-1.11%	0.61	(65.06)	0.0%	25	3%	-2%	0.02	0.38	-0.9%	-0.7%	0.050	0.027	0.08%
KAMCO Investment	0.075	0.000	0.00%	0.45	8.43	0.0%	26	4%	-17%	0.01	0.09	5.4%	2.3%	0.111	0.060	0.08%
First Investment	0.037	0.001	1.39%	0.57	(0.50)	0.0%	24	16%	6%	0.64	17.40	-113.6%	-62.0%	0.045	0.022	0.07%
Inovest BSC Public	0.076	-0.001	-0.91%	0.53	10.25	7.7%	23	-1%	17%	0.01	0.11	5.2%	2.9%	0.081	0.044	0.07%
Coast Investment and Development	0.041	0.000	0.75%	0.43	40.36	0.0%	24	13%	1%	0.03	0.75	1.1%	1.0%	0.045	0.026	0.07%
Al Madar Finance and Investment	0.087	-0.004	-3.99%	0.79	12.95	0.0%	18	6%	-7%	0.11	1.28	6.1%	5.0%	0.143	0.062	0.06%
Bayan Investment	0.038	-0.002	-4.49%	0.38	(19.79)	0.0%	14	-18%	1%	0.00	0.11	-1.9%	-0.8%	0.053	0.031	0.04%
Al Manar Financing and Leasing	0.043	0.000	-0.46%	0.39	11.06	1.2%	13	-3%	-17%	0.01	0.28	3.5%	2.7%	0.060	0.037	0.04%
Manazel Holding	0.034	0.000	0.29%	0.75	21.92	0.0%	15	7%	-13%	0.01	0.16	3.4%	0.8%	0.048	0.021	0.05%
Kuwait Finance and Investment	0.049	0.000	0.00%	0.38	21.82	0.0%	15	12%	-2%	0.00	0.00	1.8%	1.2%	0.058	0.038	0.05%
National International Holding	0.063	0.000	0.00%	0.33	7.52	4.7%	13	4%	-15%	0.01	0.12	4.4%	3.3%	0.081	0.052	0.04%
Osoul Investment	0.084	0.001	0.60%	0.63	7.06	0.0%	13	5%	12%	0.00	0.02	9.0%	8.2%	0.121	0.070	0.04%
UniCap Investment and Finance	0.042	0.000	0.96%	0.42	(21.02)	0.0%	10	-1%	-24%	0.00	0.02	-2.0%	-1.0%	0.057	0.035	0.03%
Amar Finance and Leasing	0.055	0.000	0.00%	0.62	46.05	0.0%	11	-2%	45%	0.00	0.00	1.3%	1.2%	0.064	0.037	0.03%
Gulf North Africa Holding	0.059	0.000	0.00%	0.78	76.01	0.0%	9	1%	-5%	0.00	0.00	1.0%	0.6%	0.062	0.052	0.03%
Al Salam Group Holding	0.028	0.000	-0.71%	0.24	209.87	0.0%	7	8%	-5%	0.11	4.09	0.1%	0.1%	0.033	0.018	0.02%
International Financial Advisors	0.057	0.000	-0.18%	1.71	(0.77)	1.1%	14	84%	6%	0.07	1.31	-222.8%	-19.3%	0.064	0.027	0.04%
Amwal International Investment	0.036	0.000	0.00%	0.66	13.12	0.0%	6	0%	18%	0.00	0.00	5.0%	2.6%	0.043	0.030	0.02%
Al Madina for Finance and Investment	0.016	0.000	-1.80%	0.55	(3.08)	0.0%	6	33%	9%	0.08	5.09	-17.9%	-7.7%	0.019	0.009	0.02%
Credit Rating and Collection	0.032	0.000	0.00%	0.97	(21.20)	0.0%	5	0%	58%	0.00	0.00	-4.6%	-4.3%	0.035	0.019	0.02%
Ekttitab Holding	0.016	0.000	1.88%	0.39	(11.48)	0.0%	5	6%	9%	0.21	13.02	-3.4%	-3.0%	0.017	0.010	0.02%
Kuwait Syrian Holding Co	0.030	0.000	0.00%	0.26	(15.48)	0.0%	5	12%	-4%	0.00	0.00	-1.7%	-1.1%	0.043	0.022	0.02%
Warba Capital Holding	0.049	0.000	0.20%	0.55	(7.80)	0.0%	5	6%	-24%	0.00	0.02	-7.0%	-6.2%	0.070	0.042	0.02%
National Consumer Holding	0.045	0.000	-0.22%	0.50	220.89	0.0%	4	-6%	-18%	0.00	0.00	0.2%	0.2%	0.100	0.010	0.01%
Al Deera Holding	0.016	0.000	0.00%	0.70	(9.02)	0.0%	3	0%	-20%	0.00	0.00	-7.7%	-1.7%	0.022	0.011	0.01%
Al Mal Investment Company	0.009	0.000	1.11%	0.40	(0.85)	0.0%	3	2%	-8%	0.01	0.85	-47.6%	-23.3%	0.016	0.008	0.01%
Gulf Franchising Holding	0.050	0.000	0.00%	0.78	(2.16)	0.0%	2	4%	-34%	0.00	0.00	-36.2%	-10.8%	0.148	0.016	0.01%
Tamkeen Holding	0.005	0.000	0.00%	0.05	(7.18)	0.0%	0	0%	0%	0.00	0.00	-0.7%	-0.7%	0.005	0.005	0.00%
Total Financial services - 49 Companies				0.74	16.74	4.0%	2,585			3.61	61.68	4.42%	4.14%			7.94%

DAILY MARKET COVERAGE REPORT

NIC MENA SECURITIES - RESEARCH AND STUDIES DEP



Health care	Price			Valuation Multiples			MKT Cap	Price Performance		Trading Indicators		ROE	ROA	52 Week (KD)		MKT Cap
	Company	Close (KD)	Day Δ	Day % Δ	PBV(X)	PE(X)		DY%	Mn KD	MTD(%)	YTD (%)			Value (Mn KD)	(Mn Shrs)	
Al-Maidan Clinic for Oral Health Services	1.220	0.000	0.00%	7.90	47.78	0.6%	305	0%	0%	0.00	0.00	16.5%	10.9%	1.220	1.220	0.94%
Advanced Technology	0.600	0.000	0.00%	1.56	48.85	2.5%	90	1%	-26%	0.00	0.00	3.2%	0.7%	0.900	0.580	0.28%
Yiaco Medical	0.707	0.000	0.00%	6.06	52.72	0.0%	12	0%	0%	0.00	0.00	11.5%	0.6%	0.707	0.707	0.04%
Total Health care - 3 Companies				4.15	48.14	1.0%	407			0.00	0.00	8.61%	4.68%			1.25%

Industrials	Price			Valuation Multiples			MKT Cap	Price Performance		Trading Indicators		ROE	ROA	52 Week (KD)		MKT Cap
	Company	Close (KD)	Day Δ	Day % Δ	PBV(X)	PE(X)		DY%	Mn KD	MTD(%)	YTD (%)			Value (Mn KD)	(Mn Shrs)	
Agility Public Warehousing	0.679	-0.003	-0.44%	1.18	14.98	2.7%	1,299	3%	-5%	0.89	1.31	7.9%	4.2%	0.748	0.357	3.99%
Human Soft Holding	2.991	0.039	1.32%	4.53	10.14	6.1%	364	15%	0%	2.01	0.67	44.6%	30.3%	3.470	1.944	1.12%
ALAFCO Aviation Lease and Finance	0.166	0.001	0.61%	0.50	8.93	6.0%	158	6%	-39%	0.14	0.84	5.5%	1.4%	0.278	0.138	0.49%
Kuwait Cement	0.228	0.000	0.00%	0.78	40.47	6.5%	163	17%	-8%	0.02	0.09	1.9%	1.3%	0.258	0.144	0.50%
Gulf Cable and Electrical Industries	0.690	-0.010	-1.43%	0.83	34.22	4.0%	145	1%	41%	0.11	0.16	2.4%	2.2%	0.742	0.390	0.44%
Integrated Holding	0.375	-0.004	-1.06%	1.20	10.44	10.7%	83	4%	-32%	0.10	0.28	11.5%	8.5%	0.600	0.342	0.25%
Kuwait Portland Cement	0.785	0.000	0.00%	1.05	10.37	12.5%	79	4%	-20%	0.04	0.05	10.2%	8.2%	1.133	0.683	0.24%
Educational Holding Group	0.307	0.000	0.00%	1.78	9.72	4.9%	75	-1%	-30%	0.00	0.00	18.3%	16.7%	0.475	0.228	0.23%
United Projects for Aviation Services	0.390	0.000	0.00%	0.82	6.67	5.4%	62	-16%	-24%	0.00	0.00	12.3%	7.8%	0.512	0.361	0.19%
Heavy Engineering Industries and Shipbuilding	0.378	0.000	0.00%	1.09	6.07	7.7%	68	4%	-7%	0.07	0.18	18.0%	5.9%	0.419	0.298	0.21%
National Industries	0.155	-0.001	-0.64%	0.64	12.63	6.4%	54	0%	-6%	0.05	0.31	5.1%	3.8%	0.173	0.143	0.17%
ACICO Industries	0.103	0.000	0.00%	0.33	13.41	4.8%	34	2%	-23%	0.01	0.13	2.5%	0.6%	0.137	0.081	0.10%
Kuwait Company for Process Plant Constructi	0.320	0.005	1.59%	1.26	6.85	5.6%	34	5%	33%	0.04	0.13	18.5%	7.7%	0.337	0.175	0.10%
Ras Al Khaimah for White Cement and Constr	0.065	0.000	0.00%	0.51	19.94	8.4%	33	0%	0%	0.00	0.00	2.6%	2.0%	0.080	0.060	0.10%
Combined Group Contracting	0.185	-0.001	-0.54%	0.64	8.33	11.1%	30	8%	-26%	0.02	0.09	7.7%	1.2%	0.251	0.138	0.09%
Gulf Cement	0.033	-0.002	-4.41%	0.32	(11.85)	12.8%	27	-2%	-41%	0.00	0.07	-2.7%	-2.2%	0.058	0.029	0.08%
Sharjah Cement and Industrial Development	0.042	0.000	0.00%	0.21	25.32	12.4%	26	0%	0%	0.00	0.00	0.8%	0.6%	0.060	0.042	0.08%
KGL Logistics	0.030	0.000	1.02%	0.22	4.84	0.1%	23	11%	-20%	0.00	0.00	4.6%	2.9%	0.043	0.023	0.07%
Kuwait and Gulf Link Transport	0.051	-0.002	-3.25%	0.21	15.30	0.0%	14	8%	-24%	0.02	0.32	1.4%	0.4%	0.077	0.042	0.04%
Shuaiba Industrial	0.150	0.000	0.00%	0.84	46.32	6.6%	15	15%	-3%	0.00	0.00	1.8%	1.4%	0.180	0.122	0.05%
National Cleaning	0.056	-0.002	-2.63%	0.33	7.43	9.1%	12	-3%	-20%	0.00	0.01	4.4%	1.5%	0.088	0.047	0.04%
Fujairah Cement Industries	0.036	0.000	0.00%	0.15	17.22	11.8%	13	4%	-21%	0.00	0.00	0.8%	0.4%	0.051	0.029	0.04%
Hilal Cement	0.114	0.000	0.00%	0.99	(9.37)	13.2%	12	0%	14%	0.00	0.00	-10.6%	-6.2%	0.126	0.063	0.04%
Mubarrad Holding	0.062	0.000	-0.16%	0.49	9.99	7.6%	10	2%	-30%	0.00	0.04	4.9%	4.1%	0.089	0.049	0.03%
Specialities Group Holding	0.064	0.000	-0.47%	0.35	7.61	0.0%	10	3%	-16%	0.05	0.72	4.5%	3.5%	0.078	0.050	0.03%
National Ranges	0.017	0.002	9.87%	0.30	(1.22)	0.0%	5	19%	67%	0.17	10.49	-24.9%	-5.3%	0.018	0.007	0.01%
Sabookh Trading	0.035	0.000	0.00%	0.48	(2.07)	0.0%	4	-2%	-29%	0.00	0.06	-23.2%	-15.9%	0.051	0.026	0.01%
Metal and Recycling	0.040	0.000	0.00%	0.33	(1.70)	0.0%	4	2%	-20%	0.00	0.00	-19.7%	-10.1%	0.070	0.020	0.01%
Equipment Holding	0.016	0.000	0.00%	0.31	(178.99)	0.0%	2	-3%	-29%	0.00	0.21	-0.2%	-0.1%	0.024	0.013	0.01%
Total Industrials - 29 Companies				0.91	13.60	4.9%	2,854			3.74	16.15	6.67%	5.05%			8.77%

DAILY MARKET COVERAGE REPORT

NIC MENA SECURITIES - RESEARCH AND STUDIES DEP



Insurance	Price			Valuation Multiples			MKT Cap	Price Performance		Trading Indicators		ROE	ROA	52 Week (KD)		MKT Cap
	Company	Close (KD)	Day Δ	Day % Δ	PBV(X)	PE(X)		DY%	Mn KD	MTD(%)	YTD (%)			Value (Mn KD)	(Mn Shrs)	
Gulf Insurance Group	0.599	0.026	4.54%	1.03	8.36	6.2%	112	-16%	-9%	0.00	0.00	12.3%	1.7%	0.720	0.550	0.34%
Al Ahleia Insurance	0.406	-0.014	-3.33%	0.77	8.18	8.3%	84	2%	0%	0.01	0.03	9.4%	3.3%	0.445	0.367	0.26%
Kuwait Insurance	0.380	0.019	5.26%	0.62	7.36	6.3%	70	5%	15%	0.01	0.04	8.5%	4.6%	0.380	0.300	0.22%
Kuwait Reinsurance	0.225	0.000	0.00%	0.85	9.63	1.9%	46	2%	63%	0.00	0.00	8.9%	3.2%	0.225	0.126	0.14%
Bahrain Kuwait Insurance	0.200	0.000	0.00%	0.93	12.86	6.1%	28	0%	0%	0.00	0.00	7.2%	1.1%	0.200	0.200	0.09%
Warba Insurance	0.076	-0.001	-0.66%	0.33	10.72	0.0%	13	3%	25%	0.00	0.00	3.1%	1.0%	0.094	0.051	0.04%
First Takaful Insurance	0.040	0.000	0.00%	0.48	5.02	0.0%	4	7%	4%	0.00	0.00	9.6%	5.9%	0.056	0.031	0.01%
Wethaq Takaful Insurance	0.022	0.000	-0.91%	0.20	(27.46)	0.0%	2	-8%	-13%	0.00	0.02	-0.7%	-0.7%	0.035	0.018	0.01%
Total Insurance - 8 Companies				0.76	8.54	5.8%	359			0.03	0.09	8.86%	3.00%			1.10%

Oil and Gas	Price			Valuation Multiples			MKT Cap	Price Performance		Trading Indicators		ROE	ROA	52 Week (KD)		MKT Cap
	Company	Close (KD)	Day Δ	Day % Δ	PBV(X)	PE(X)		DY%	Mn KD	MTD(%)	YTD (%)			Value (Mn KD)	(Mn Shrs)	
National Petroleum Services	1.150	0.000	0.00%	2.74	9.81	6.1%	112	5%	-2%	0.00	0.00	27.9%	23.6%	1.389	0.903	0.34%
Independent Petroleum Group	0.430	0.000	0.00%	0.79	11.72	7.0%	78	0%	-11%	0.00	0.00	6.8%	2.2%	0.497	0.375	0.24%
Burgan for Well Drilling Trading and Maintenanc	0.080	0.000	0.00%	0.29	8.13	0.0%	18	3%	0%	0.00	0.00	3.6%	1.1%	0.098	0.060	0.06%
Energy House Holding	0.022	0.000	-1.34%	0.68	(3.03)	0.0%	17	12%	-3%	0.00	0.07	-22.5%	-17.0%	0.036	0.014	0.05%
Gulf Petroleum Investment	0.020	0.000	-0.49%	0.23	(6.57)	0.0%	9	11%	1%	0.07	3.56	-3.4%	-2.3%	0.023	0.012	0.03%
Senegy Holding	0.020	0.000	2.08%	0.39	(0.82)	0.0%	4	3%	-11%	0.12	6.12	-47.9%	-30.4%	0.027	0.014	0.01%
Total Oil and Gas - 6 Companies				0.86	27.56	5.1%	237			0.19	9.76	3.10%	2.18%			0.73%

Real estate	Price			Valuation Multiples			MKT Cap	Price Performance		Trading Indicators		ROE	ROA	52 Week (KD)		MKT Cap
	Company	Close (KD)	Day Δ	Day % Δ	PBV(X)	PE(X)		DY%	Mn KD	MTD(%)	YTD (%)			Value (Mn KD)	(Mn Shrs)	
Mabane Co.	0.684	-0.004	-0.58%	1.60	13.40	1.5%	756	-7%	-20%	1.31	1.92	11.9%	5.8%	0.877	0.434	2.32%
Salhia Real Estate	0.400	0.002	0.50%	1.21	9.19	5.0%	198	0%	-4%	0.03	0.07	13.2%	5.8%	0.460	0.330	0.61%
Commercial Real Estate	0.105	0.000	0.00%	0.64	13.01	5.4%	190	4%	14%	0.00	0.01	5.0%	2.7%	0.112	0.085	0.58%
National Real Estate	0.075	0.000	-0.13%	0.41	9.86	0.0%	113	1%	-14%	0.07	1.00	4.2%	2.4%	0.090	0.058	0.35%
Tamdeen Real Estate	0.253	-0.004	-1.56%	0.37	12.34	4.0%	102	-4%	-22%	0.00	0.00	3.0%	2.2%	0.343	0.241	0.31%
Kuwait Real Estate	0.102	-0.001	-0.97%	0.71	12.96	0.4%	91	8%	-4%	0.43	4.26	5.5%	2.2%	0.115	0.070	0.28%
United Real Estate	0.045	-0.003	-6.44%	0.26	(6.69)	0.0%	48	-13%	-31%	0.06	1.46	-3.9%	-1.2%	0.063	0.041	0.15%
First Dubai for Real Estate Development	0.042	0.000	-0.48%	0.56	45.62	0.9%	42	7%	17%	0.02	0.36	1.2%	1.0%	0.055	0.027	0.13%
Al Mazaya Holding	0.054	-0.001	-1.46%	0.42	(3.86)	0.1%	34	3%	-9%	0.05	0.91	-11.0%	-3.8%	0.067	0.047	0.10%
Ajial Real Estate Entertainment	0.154	0.000	0.00%	0.24	14.88	0.0%	30	7%	-11%	0.00	0.00	1.6%	1.4%	0.213	0.115	0.09%
Injazzat Real Estate Development	0.074	-0.004	-4.55%	0.47	(3.52)	9.4%	25	-7%	-8%	0.00	0.01	-13.4%	-7.0%	0.084	0.061	0.08%

DAILY MARKET COVERAGE REPORT

NIC MENA SECURITIES - RESEARCH AND STUDIES DEP



Real estate Company	Price			Valuation Multiples			MKT Cap	Price Performance		Trading Indicators		ROE	ROA	52 Week (KD)		MKT Cap
	Close (KD)	Day Δ	Day % Δ	PBV(X)	PE(X)	DY%	Mn KD	MTD(%)	YTD (%)	Value (Mn KD)	(Mn Shrs)	(%)	(%)	High	Low	%
Munshaat Real Estate Projects	0.078	0.004	5.28%	0.53	28.67	2.7%	25	10%	5%	0.00	0.00	1.8%	0.7%	0.090	0.045	0.08%
Aayan Real Estate	0.058	0.000	-0.17%	0.34	11.33	8.2%	24	-1%	-21%	0.01	0.13	3.0%	1.9%	0.080	0.048	0.07%
Al Argan International Real Estate	0.094	0.000	0.00%	0.27	30.37	5.2%	24	1%	-11%	0.00	0.00	0.9%	0.3%	0.135	0.060	0.07%
Al-Enmaa Real Estate	0.050	-0.001	-2.56%	0.50	13.08	0.0%	22	6%	-21%	0.09	1.75	3.8%	2.4%	0.079	0.037	0.07%
Ream Real Estate	0.102	-0.008	-7.27%	0.78	(4.10)	2.2%	11	-50%	16%	0.00	0.03	-19.0%	-10.1%	0.204	0.060	0.03%
Arkan Al Kuwait Real Estate	0.082	-0.003	-3.53%	0.58	8.88	9.5%	21	1%	-8%	0.00	0.00	6.6%	3.5%	0.100	0.076	0.06%
Kuwait Business Town Real Estate	0.033	0.001	2.17%	0.30	8.43	0.2%	21	12%	-25%	0.01	0.30	3.6%	2.7%	0.046	0.022	0.06%
Dalqan Real Estate	0.318	0.000	0.00%	2.91	58.98	0.0%	19	0%	0%	0.00	0.00	4.9%	4.9%	0.318	0.318	0.06%
Sokouk Holding	0.027	0.000	-0.37%	0.33	(4.49)	0.0%	15	-2%	-24%	0.04	1.57	-7.4%	-4.7%	0.040	0.022	0.05%
Tijara and Realestate Investment	0.047	0.000	0.00%	0.44	12.42	4.2%	17	17%	-6%	0.00	0.00	3.6%	1.9%	0.055	0.034	0.05%
Al-Arabiya Real Estate	0.027	0.001	2.27%	0.24	8.19	2.3%	14	2%	-8%	0.08	2.95	2.9%	1.1%	0.033	0.020	0.04%
Aqar Real Estate Investments	0.058	-0.002	-3.16%	0.42	4.86	8.5%	12	-2%	-27%	0.02	0.32	8.7%	7.3%	0.089	0.058	0.04%
Mashaer Holding	0.060	0.000	0.00%	0.46	6.46	0.0%	11	4%	-23%	0.00	0.00	7.1%	5.0%	0.086	0.048	0.03%
Investors Holding Group	0.019	0.000	0.00%	0.98	(0.92)	0.0%	12	23%	141%	0.21	10.64	-106.5%	-57.2%	0.032	0.007	0.04%
Dar Al Thuraya Real Estate	0.068	-0.004	-4.88%	0.65	17.98	0.0%	10	-6%	-3%	0.00	0.00	3.6%	3.6%	0.190	0.040	0.03%
Osos Holding Group	0.087	-0.003	-3.65%	0.69	6.58	10.8%	9	0%	-13%	0.00	0.02	10.5%	7.0%	0.118	0.081	0.03%
Al Massaleh Real Estate	0.038	-0.001	-1.30%	0.43	(5.30)	0.0%	9	10%	3%	0.00	0.01	-8.1%	-1.9%	0.040	0.026	0.03%
Abyaar Real Estate Development	0.007	0.000	0.00%	0.21	(0.51)	0.0%	8	0%	-6%	0.00	0.00	-40.9%	-12.4%	0.013	0.005	0.02%
Kuwait Remal Real Estate	0.023	0.000	-1.32%	0.34	(3.09)	0.0%	7	12%	-8%	0.00	0.12	-11.0%	-3.9%	0.027	0.013	0.02%
Kuwait Real Estate Holding	0.026	-0.001	-2.99%	0.04	0.69	6.8%	5	0%	-9%	0.00	0.10	5.5%	2.2%	0.034	0.022	0.02%
Taameer Real Estate Investment	0.021	0.001	3.45%	0.31	(4.44)	0.0%	5	12%	-21%	0.06	2.99	-7.0%	-4.5%	0.032	0.013	0.01%
Sanam Real Estate	0.034	-0.001	-2.86%	0.43	46.04	0.0%	4	-3%	-15%	0.00	0.00	0.9%	0.9%	0.043	0.027	0.01%
Mena Real Estate	0.029	0.000	0.00%	0.20	(64.63)	0.0%	4	3%	-30%	0.02	0.74	-0.3%	-0.2%	0.043	0.021	0.01%
Al Masaken International Real Estate Developr	0.025	0.000	-0.78%	0.28	30.68	0.7%	2	-30%	-42%	0.05	1.96	0.9%	0.4%	0.074	0.025	0.01%
Real Estate Trade Centers	0.029	-0.002	-6.07%	0.16	167.98	0.0%	4	9%	27%	0.00	0.03	0.1%	0.1%	0.050	0.018	0.01%
Ajwan Gulf Real Estate	0.011	0.000	0.00%	0.19	(7.68)	0.0%	2	0%	-29%	0.00	0.00	-2.5%	-2.2%	0.016	0.009	0.01%
Effect Real Estate	0.021	0.000	0.00%	0.29	(8.85)	4.9%	2	0%	0%	0.00	0.00	-3.3%	-3.2%	0.021	0.021	0.01%
Al Mudon International Real Estate	0.022	0.000	0.00%	0.17	(11.48)	0.0%	2	40%	-9%	0.25	10.92	-1.5%	-1.4%	0.028	0.015	0.01%
Total Real estate - 39 Companies				0.64	22.82	2.5%	1,949			2.82	44.56	2.79%	2.96%			5.99%

DAILY MARKET COVERAGE REPORT

NIC MENA SECURITIES - RESEARCH AND STUDIES DEP



Technology	Price			Valuation Multiples			MKT Cap	Price Performance		Trading Indicators		ROE	ROA	52 Week (KD)		MKT Cap
	Company	Close (KD)	Day Δ	Day % Δ	PBV(X)	PE(X)		DY%	Mn KD	MTD(%)	YTD (%)			Value (Mn KD)	(Mn Shrs)	
Automated Systems	0.070	-0.001	-1.69%	0.55	(67.90)	5.7%	7	-1%	-1%	0.00	0.05	-0.8%	-0.7%	0.087	0.051	0.02%
Total Technology - 1 Companies				0.55	(67.90)	5.7%	7			0.00	0.05	-0.81%	-0.73%			0.02%

Telecom	Price			Valuation Multiples			MKT Cap	Price Performance		Trading Indicators		ROE	ROA	52 Week (KD)		MKT Cap
	Company	Close (KD)	Day Δ	Day % Δ	PBV(X)	PE(X)		DY%	Mn KD	MTD(%)	YTD (%)			Value (Mn KD)	(Mn Shrs)	
Mobile Telecommunications	0.611	0.000	0.00%	2.04	12.19	5.1%	2,644	6%	2%	3.25	5.32	16.7%	4.6%	0.629	0.407	8.12%
Kuwait Telecommunications	0.852	-0.003	-0.35%	1.98	9.76	4.1%	425	1%	8%	0.01	0.02	20.2%	11.1%	0.870	0.680	1.31%
National Mobile Telecommunications	0.639	0.004	0.63%	0.56	10.63	10.1%	320	6%	-23%	0.04	0.06	5.3%	2.4%	0.835	0.550	0.98%
AAN Digital Services	0.013	0.000	-1.48%	0.39	43.38	0.0%	12	3%	-1%	0.16	12.16	0.9%	0.7%	0.021	0.009	0.04%
Hayat Communications	0.058	0.000	-0.35%	0.49	24.45	0.0%	5	-2%	-23%	0.00	0.04	2.0%	0.8%	0.098	0.033	0.02%
Telecom - 5 Companies				1.60	11.70	5.4%	3,406			3.47	17.58	13.70%	7.86%			10.46%

Utilities	Price			Valuation Multiples			MKT Cap	Price Performance		Trading Indicators		ROE	ROA	52 Week (KD)		MKT Cap
	Company	Close (KD)	Day Δ	Day % Δ	PBV(X)	PE(X)		DY%	Mn KD	MTD(%)	YTD (%)			Value (Mn KD)	(Mn Shrs)	
Shamal Az-Zour Al-Oula Power & Water	0.330	-0.001	-0.30%	4.74	29.51	0.0%	363	3%	0%	0.84	2.55	16.1%	2.3%	0.500	0.297	1.11%
Total Utilities - 1 Companies				4.74	29.51	0.0%	363			0.84	2.55	16.06%	2.26%			1.11%

Total Market 173 Companies				1.30	15.72	3.74%	32,561			34.08	202.29	8.26%	2.76%			100%
-----------------------------------	--	--	--	-------------	--------------	--------------	---------------	--	--	--------------	---------------	--------------	--------------	--	--	-------------

End of Report

The information contained in this document is proprietary to NIC and is for use only by the persons to whom it is issued. This document is confidential and may not be distributed either in part or in whole without the express agreement of NIC. It is intended solely for the use of the individual or entity to whom it is addressed and others authorized to receive it.

Note : ROE and ROA is calculated based on LTM net profit & shareholders' equity and LTM Operating Profits & Total Assets

Sources : National Investments Company Research and Studies Departments



شركة الاستثمار الوطنية
NATIONAL INVESTMENTS COMPANY

Sharq, Al Mutanabi Street, Khaleejia Tower | P.O. Box 25667, Safat 13117, Kuwait

T.: +965 2226 6666 | Fax: +965 2226 6793 | www.nic.com.kw