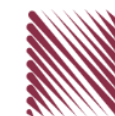


شركة الاستثمارات الوطنية  
NATIONAL INVESTMENTS COMPANY

**Bursa Kuwait – Daily Market Report**  
**MENA Securities – Research & Studies Dep.**  
**Thursday, August 6, 2020**

# DAILY MARKET COVERAGE REPORT

NIC MENA SECURITIES - RESEARCH AND STUDIES DEP



Index	Close	DTD Chg Net	DTD (%)	YTD (%)	52W High	52W Low	MKT CAP Bn (KD)	PBV (X)	PE (X)	DY (%)
All Share Index	5,009.79	-2.39	-0.05%	-20.2%	6,416.43	4,339.58	28.52	1.11	13.92	4.27%
Premier Index	5,484.13	-6.84	-0.12%	-21.3%	7,172.32	4,498.65	20.83	1.51	12.69	4.01%
Main Index	4,072.77	6.57	0.16%	-17.1%	4,932.47	3,965.63	7.69	0.64	18.90	4.96%

Index	Value Mn(KD)	Volume (Mn share)
All Share Index	25.73	149.93
Premier Index	22.99	56.75
Main Index	2.74	93.18

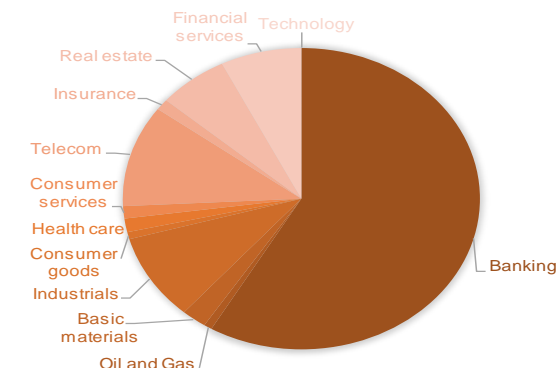
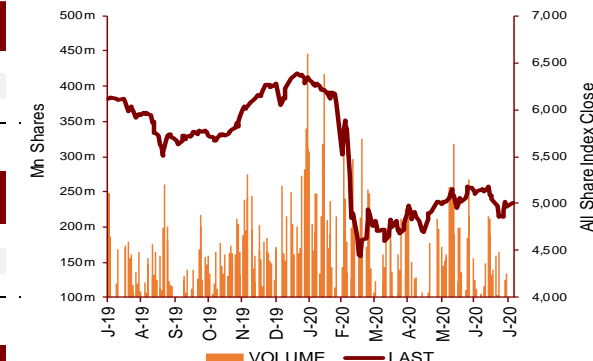
Market Breadth	UP	Down	No Chg
All Share Index	45	44	83
Premier Index	5	9	4
Main Index	40	35	79

Today's Top 5 Gainer %	Close KD	Value KD	DTD (%)
Dar Al Thuraya Real Estate Co KPS	0.131	1	11.97%
AAN Digital Services Co KSCP	0.011	157,576	8.82%
Gulf Insurance Group KSCP	0.600	8,380	7.91%
Al Salam Group Holding Co KSCP	0.022	145,238	6.73%
Gulf Petroleum Investment Comp	0.017	642,923	6.21%

Today's Top 5 Loser %	Close KD	Value KD	DTD (%)
Al Deera Holding Co	0.016	684	-5.33%
Real Estate Trade Ce	0.025	12	-5.00%
Kuwait Hotels Co KPS	0.096	10	-4.95%
Amar Finance and Lea	0.045	675	-4.86%
Salbookh Trading Co	0.030	2,065	-4.84%

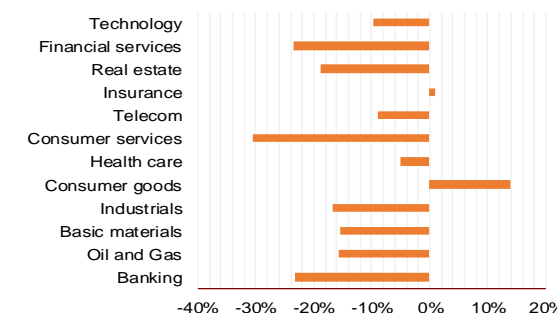
Today's Top 5 by Value	Close KD	DTD Chg	Trade Val Mn(KD)
Kuwait Finance House KSC	0.588	0.00%	8.99
Ahli United Bank BSC	0.193	1.05%	2.74
National Bank of Kuwait SAKP	0.791	-0.63%	2.66
Gulf Bank KSCP	0.200	1.01%	1.74
Mobile Telecommunications Comp	0.554	-0.18%	1.58

Top 5 by Volume	Close KD	DTD Chg	Trade Vol Mn(Shrs)
Gulf Petroleum Inves	0.017	6.21%	38.15
Kuwait Finance House	0.588	0.00%	15.17
AAN Digital Services	0.011	8.82%	14.71
Ahli United Bank BSC	0.193	1.05%	14.30
Gulf Bank KSCP	0.200	1.01%	8.71



Sector	Close	DTD Chg Net	DTD (%)	YTD (%)	52W High	52W Low	MKT CAP Bn (KD)	PBV (X)	PE (X)	DY (%)
Banking	1,138.46	0.070	0.01%	-23.1%	1,536.8	986.4	16.66	1.41	13.88	3.8%
Oil and Gas	1,043.76	2.160	0.21%	-15.6%	1,372.2	985.7	0.21	0.76	24.43	5.8%
Basic materials	767.03	-7.610	-0.98%	-15.4%	1,054.0	561.7	0.65	0.93	14.12	7.8%
Industrials	773.17	-3.770	-0.49%	-16.6%	937.5	602.9	2.64	0.84	12.59	5.3%
Consumer goods	727.14	4.770	0.66%	13.8%	806.3	548.6	0.22	1.44	88.13	2.4%
Health care	839.19	0.000	0.00%	-5.1%	931.0	815.0	0.42	4.24	49.21	1.0%
Consumer services	744.32	0.850	0.11%	-30.6%	1,083.1	674.8	0.38	0.85	35.80	4.7%
Telecom	1,017.09	-0.830	-0.08%	-9.0%	1,116.7	802.2	3.12	1.47	10.70	5.9%
Insurance	962.87	23.930	2.55%	0.9%	988.8	901.0	0.34	0.72	8.07	6.2%
Real estate	859.50	1.270	0.15%	-18.9%	1,083.4	763.2	1.81	0.59	21.17	2.7%
Financial services	827.63	-2.430	-0.29%	-23.4%	1,097.0	801.4	2.08	0.60	14.38	5.0%
Technology	465.60	0.000	0.00%	-9.6%	625.7	371.0	0.01	0.50	-62.08	6.3%
							28.52			

YTD Sector Performance %



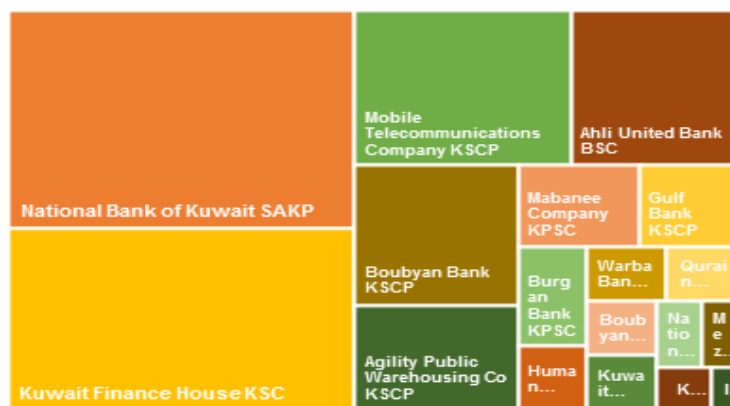
# DAILY MARKET COVERAGE REPORT

## NIC MENA SECURITIES - RESEARCH AND STUDIES DEP

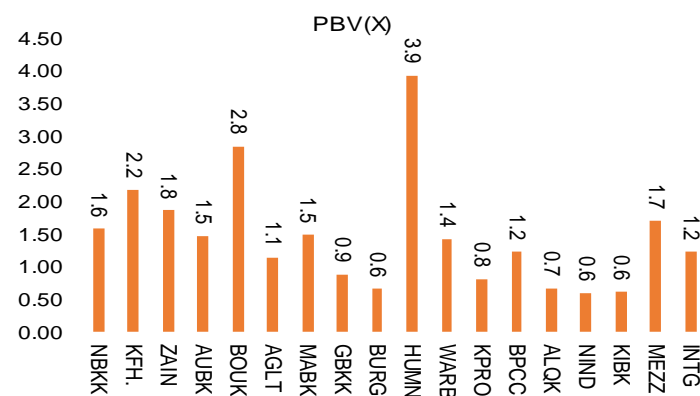


Premier Market	Price			Valuation Multiples			MKT Cap	Price Performance		Trading Indicators		ROE	ROA	52 Week (KD)	
	Close (KD)	Day Δ	Day % Δ	PBV(X)	PE(X)	DY%	Mn KD	MTD(%)	YTD (%)	Value (Mn KD)	(Mn Shrs)	(%)	(%)	High	Low
National Bank of Kuwait SAKP	0.791	-0.005	-0.63%	1.56	13.39	4.0%	5,372	0%	-22%	2.66	3.35	11.7%	1.4%	1.062	0.654
Kuwait Finance House KSC	0.588	0.000	0.00%	2.17	17.81	2.8%	4,471	2%	-20%	8.99	15.17	12.2%	1.3%	0.761	0.473
Mobile Telecommunications Company KSCP	0.554	-0.001	-0.18%	1.85	11.05	5.6%	2,397	1%	-8%	1.58	2.84	16.7%	8.3%	0.604	0.407
Ahli United Bank BSC	0.193	0.002	1.05%	1.46	8.50	6.3%	1,863	3%	-34%	2.74	14.30	17.1%	1.8%	0.311	0.160
Boubyan Bank KSCP	0.538	0.000	0.00%	2.83	26.00	1.2%	1,629	1%	-12%	0.47	0.88	10.9%	1.2%	0.638	0.380
Agility Public Warehousing Co KSCP	0.644	-0.001	-0.16%	1.12	14.20	2.8%	1,232	1%	-9%	0.80	1.23	7.9%	6.5%	0.748	0.357
Mabane Company KPSC	0.635	-0.003	-0.47%	1.48	12.44	1.6%	702	5%	-26%	0.34	0.54	11.9%	6.1%	0.877	0.434
Gulf Bank KSCP	0.200	0.002	1.01%	0.87	9.11	5.0%	580	6%	-34%	1.74	8.71	9.6%	1.0%	0.317	0.180
Burgan Bank KPSC	0.186	0.004	2.20%	0.65	5.75	6.1%	487	3%	-39%	0.40	2.17	11.3%	1.2%	0.358	0.175
Human Soft Holding Company KSCP	2.590	-0.081	-3.03%	3.92	8.78	7.1%	315	-5%	-14%	1.51	0.58	44.6%	33.0%	3.470	1.944
Warba Bank KSCP	0.196	0.000	0.00%	1.42	18.67	0.0%	309	1%	-25%	0.05	0.25	7.6%	0.5%	0.279	0.164
Kuwait Projects Company Holding KSCP	0.149	-0.001	-0.67%	0.80	9.00	6.2%	270	1%	-31%	0.15	0.98	8.9%	4.0%	0.231	0.147
Boubyan Petrochemical Company KSCP	0.541	-0.014	-2.52%	1.22	23.09	9.5%	273	1%	-19%	0.34	0.62	5.3%	3.1%	0.818	0.395
Qurain Petrochemical Industries Company KS	0.272	0.001	0.37%	0.66	9.87	5.6%	279	1%	-12%	0.03	0.10	6.7%	6.1%	0.350	0.163
National Industries Group Holding KPSC	0.155	0.000	0.00%	0.59	4.77	7.0%	221	0%	-35%	0.24	1.58	12.3%	7.0%	0.261	0.121
Kuwait International Bank KSCP	0.166	-0.001	-0.60%	0.60	9.87	6.0%	169	0%	-36%	0.40	2.41	6.1%	0.6%	0.272	0.162
Mezzan Holding Company KSCP	0.585	0.004	0.69%	1.69	31.61	2.9%	178	1%	17%	0.44	0.76	5.3%	4.0%	0.639	0.428
Integrated Holding Co KSCC	0.378	-0.002	-0.53%	1.21	10.53	10.6%	83	0%	-31%	0.11	0.30	11.5%	9.6%	0.600	0.360
<b>Total</b>				<b>1.51</b>	<b>12.69</b>	<b>4.0%</b>	<b>20,830</b>			<b>22.99</b>	<b>56.75</b>	<b>11.9%</b>	<b>1.2%</b>		

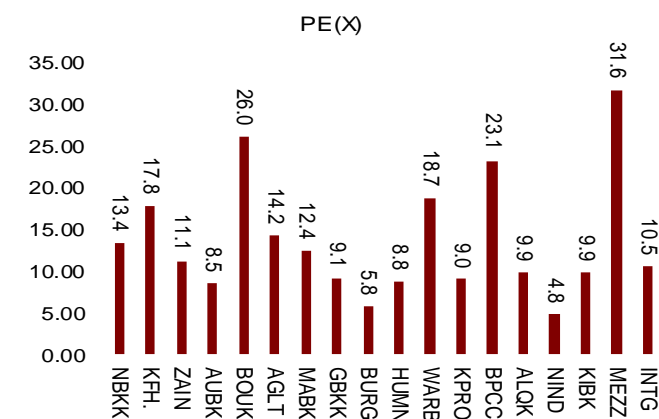
### Market Cap



### Price to Book Value

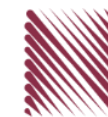


### Price to Earning Value

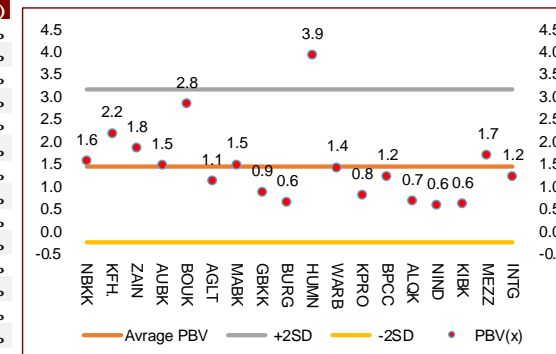


# DAILY MARKET COVERAGE REPORT

## NIC MENA SECURITIES - RESEARCH AND STUDIES DEP



Premier Market	Price			Valuation Multiples			MKT Cap	Price Performance		ROE	ROA
Company	Close (KD)	Day Δ	Day % Δ	PBV(X)	PE(X)	DY%	Mn KD	MTD(%)	YTD (%)	(%)	(%)
National Bank of Kuwait SAKP	0.791	-0.005	-0.63%	1.56	13.4	4.0%	5,372	0%	-22%	11.7%	1.4%
Kuwait Finance House KSC	0.588	0.000	0.00%	2.17	17.8	2.8%	4,471	2%	-20%	12.2%	1.3%
Mobile Telecommunications Company KSCP	0.554	-0.001	-0.18%	1.85	11.1	5.6%	2,397	1%	-8%	16.7%	8.3%
Ahli United Bank BSC	0.193	0.002	1.05%	1.46	8.5	6.3%	1,863	3%	-34%	17.1%	1.8%
Boubyan Bank KSCP	0.538	0.000	0.00%	2.83	26.0	1.2%	1,629	1%	-12%	10.9%	1.2%
Agility Public Warehousing Co KSCP	0.644	-0.001	-0.16%	1.12	14.2	2.8%	1,232	1%	-9%	7.9%	6.5%
Mabane Company KPSC	0.635	-0.003	-0.47%	1.48	12.4	1.6%	702	5%	-26%	11.9%	6.1%
Gulf Bank KSCP	0.200	0.002	1.01%	0.87	9.1	5.0%	580	6%	-34%	9.6%	1.0%
Burgan Bank KPSC	0.186	0.004	2.20%	0.65	5.8	6.1%	487	3%	-39%	11.3%	1.2%
Human Soft Holding Company KSCP	2.590	-0.081	-3.03%	3.92	8.8	7.1%	315	-5%	-14%	44.6%	33.0%
Warba Bank KSCP	0.196	0.000	0.00%	1.42	18.7	0.0%	309	1%	-25%	7.6%	0.5%
Kuwait Projects Company Holding KSCP	0.149	-0.001	-0.67%	0.80	9.0	6.2%	270	1%	-31%	8.9%	4.0%
Boubyan Petrochemical Company KSCP	0.541	-0.014	-2.52%	1.22	23.1	9.5%	273	1%	-19%	5.3%	3.1%
Qurain Petrochemical Industries Company KSC	0.272	0.001	0.37%	0.66	9.9	5.6%	279	1%	-12%	6.7%	6.1%
National Industries Group Holding KPSC	0.155	0.000	0.00%	0.59	4.8	7.0%	221	0%	-35%	12.3%	7.0%
Kuwait International Bank KSCP	0.166	-0.001	-0.60%	0.60	9.9	6.0%	169	0%	-36%	6.1%	0.6%
Mezzan Holding Company KSCP	0.585	0.004	0.69%	1.69	31.6	2.9%	178	1%	17%	5.3%	4.0%
Integrated Holding Co KSCC	0.378	-0.002	-0.53%	1.21	10.5	10.6%	83	0%	-31%	11.5%	9.6%
<b>Total</b>							<b>20,830</b>				



Premier Market	Price			Moving Average		RSI	MKT Cap	Price Performance		52 Week (KD)	
Discription	Close (KD)	Day Δ	Day % Δ	50 Day	200 Day	14 Day	Mn KD	MTD(%)	YTD (%)	High	Low
Premier Index	5,484	-6.840	-0.12%	5,498	5,967	40	20,830	-0.021	-21.34%	7,172	4,499

### Top 5 Performrs (Today's Price Change)

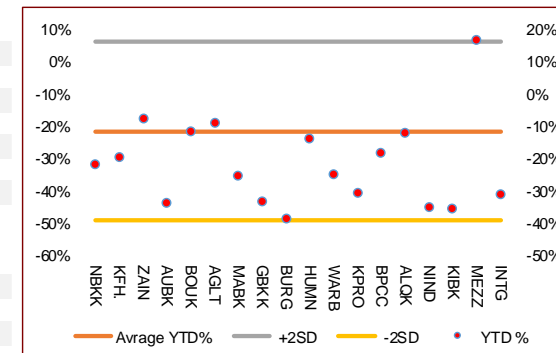
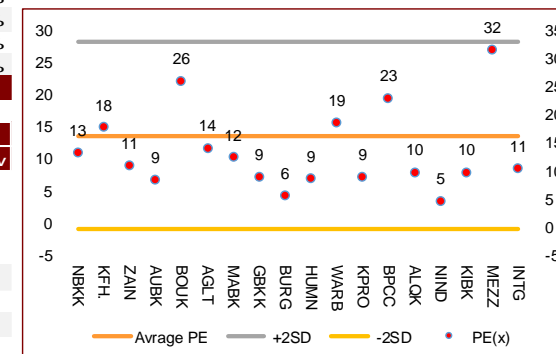
Burgan Bank KPSC	0.186	0.004	2.20%	0.194	0.250	41	487	3%	-39%	0.358	0.175
Ahli United Bank BSC	0.193	0.002	1.05%	0.183	0.231	55	1,863	3%	-34%	0.311	0.160
Gulf Bank KSCP	0.200	0.002	1.01%	0.211	0.248	46	580	6%	-34%	0.317	0.180
Mezzan Holding Company KSCP	0.585	0.004	0.69%	0.587	0.541	73	178	1%	17%	0.639	0.428
Qurain Petrochemical Industries Company KSC	0.272	0.001	0.37%	0.275	0.272	33	279	1%	-12%	0.350	0.163

### Middel Performrs (Today's Price Change)

Kuwait Finance House KSC	0.588	0.000	0.00%	0.602	0.638	47	4,471	2%	-20%	0.761	0.473
Boubyan Bank KSCP	0.538	0.000	0.00%	0.519	0.536	52	1,629	1%	-12%	0.638	0.380
Warba Bank KSCP	0.196	0.000	0.00%	0.204	0.227	38	309	1%	-25%	0.279	0.164
National Industries Group Holding KPSC	0.155	0.000	0.00%	0.164	0.196	38	221	0%	-35%	0.261	0.121
Agility Public Warehousing Co KSCP	0.644	-0.001	-0.16%	0.619	0.617	40	1,232	1%	-9%	0.748	0.357
Mobile Telecommunications Company KSCP	0.554	-0.001	-0.18%	0.549	0.546	52	2,397	1%	-8%	0.604	0.407
Mabane Company KPSC	0.635	-0.003	-0.47%	0.634	0.697	49	702	5%	-26%	0.877	0.434
Integrated Holding Co KSCC	0.378	-0.002	-0.53%	0.402	0.466	38	83	0%	-31%	0.600	0.360

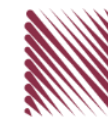
### Bottom 5 Performrs (Today's Price Change)

Human Soft Holding Company KSCP	2.590	-0.081	-3.03%	2.718	2.881	30	315	-5%	-14%	3.470	1.944
Boubyan Petrochemical Company KSCP	0.541	-0.014	-2.52%	0.586	0.611	27	273	1%	-19%	0.818	0.395
Kuwait Projects Company Holding KSCP	0.149	-0.001	-0.67%	0.163	0.190	38	270	1%	-31%	0.231	0.147
National Bank of Kuwait SAKP	0.791	-0.005	-0.63%	0.796	0.861	45	5,372	0%	-22%	1.062	0.654
Kuwait International Bank KSCP	0.166	-0.001	-0.60%	0.175	0.219	30	169	0%	-36%	0.272	0.162



# DAILY MARKET COVERAGE REPORT

## NIC MENA SECURITIES - RESEARCH AND STUDIES DEP



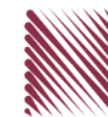
Banking Sector	Price			Valuation Multiples			MKT Cap	Price Performance		Trading Indicators		ROE	ROA	52 Week (KD)	
	Company	Close (KD)	Day Δ	Day % Δ	PBV(X)	PE(X)		DY%	Mn KD	MTD(%)	YTD (%)			Value (Mn KD)	(Mn Shrs)
National Bank of Kuwait SAKP	0.791	-0.005	-0.63%	1.56	13.39	4.0%	5,372	0%	-22%	2.66	3.35	11.7%	1.4%	1.062	0.654
Kuwait Finance House KSC	0.588	0.000	0.00%	2.17	17.81	2.8%	4,471	2%	-20%	8.99	15.17	12.2%	1.3%	0.761	0.473
Ahli United Bank BSC	0.193	0.002	1.05%	1.46	8.50	6.3%	1,863	3%	-34%	2.74	14.30	17.1%	1.8%	0.311	0.160
Boubyan Bank KSCP	0.538	0.000	0.00%	2.83	26.00	1.2%	1,629	1%	-12%	0.47	0.88	10.9%	1.2%	0.638	0.380
Commercial Bank of Kuwait KPSC	0.500	0.000	0.00%	1.32	0.00	3.7%	967	0%	-5%	0.00	0.01	0.0%	0.0%	0.555	0.465
Gulf Bank KSCP	0.200	0.002	1.01%	0.87	9.11	5.0%	580	6%	-34%	1.74	8.71	9.6%	1.0%	0.317	0.180
Burgan Bank KPSC	0.186	0.004	2.20%	0.65	5.75	6.1%	487	3%	-39%	0.40	2.17	11.3%	1.2%	0.358	0.175
Ahli United Bank KSCP	0.247	0.001	0.41%	1.06	8.75	5.5%	482	0%	-24%	0.04	0.16	12.1%	1.3%	0.342	0.225
Warba Bank KSCP	0.196	0.000	0.00%	1.42	18.67	0.0%	309	1%	-25%	0.05	0.25	7.6%	0.5%	0.279	0.164
Al Ahli Bank of Kuwait KSCP	0.165	-0.001	-0.60%	0.47	9.24	8.5%	265	-1%	-36%	0.13	0.79	5.1%	0.6%	0.339	0.156
Kuwait International Bank KSCP	0.166	-0.001	-0.60%	0.60	9.87	6.0%	169	0%	-36%	0.40	2.41	6.1%	0.6%	0.272	0.162
Ithmaar Holding BSC	0.022	0.000	0.00%	0.08	323.35	0.0%	65	0%	0%	0.00	0.00	0.0%	0.0%	0.022	0.022
<b>Total Banking Sector - 12 Companies</b>				<b>1.41</b>	<b>13.88</b>	<b>3.8%</b>	<b>16,658</b>			<b>17.6</b>	<b>48.2</b>	<b>10.13%</b>	<b>1.18%</b>		

Basic materials	Price			Valuation Multiples			MKT Cap	Price Performance		Trading Indicators		ROE	ROA	52 Week (KD)	
	Company	Close (KD)	Day Δ	Day % Δ	PBV(X)	PE(X)		DY%	Mn KD	MTD(%)	YTD (%)			Value (Mn KD)	(Mn Shrs)
Boubyan Petrochemical Company KSCP	0.541	-0.014	-2.52%	1.22	23.1	9.5%	273	1%	-19%	0.34	0.62	5.3%	3.1%	0.818	0.395
Qurain Petrochemical Industries Company KS	0.272	0.001	0.37%	0.66	9.9	5.6%	279	1%	-12%	0.03	0.10	6.7%	6.1%	0.350	0.163
Al Kout Industrial Projects Company KPSC	0.769	0.000	0.00%	2.50	16.2	6.5%	78	0%	-10%	0.00	0.00	15.4%	13.9%	0.850	0.769
Kuwait Foundry Company KPSC	0.230	-0.005	-2.13%	0.77	18.6	23.2%	17	2%	-31%	0.00	0.00	4.1%	2.3%	0.564	0.192
<b>Total Basic materials - 4 Companies</b>				<b>0.93</b>	<b>14.12</b>	<b>7.8%</b>	<b>646</b>			<b>0.36</b>	<b>0.72</b>	<b>6.57%</b>	<b>5.07%</b>		

Consumer goods	Price			Valuation Multiples			MKT Cap	Price Performance		Trading Indicators		ROE	ROA	52 Week (KD)	
	Company	Close (KD)	Day Δ	Day % Δ	PBV(X)	PE(X)		DY%	Mn KD	MTD(%)	YTD (%)			Value (Mn KD)	(Mn Shrs)
Mezzan Holding Company KSCP	0.585	0.004	0.69%	1.69	31.6	2.9%	178	1%	17%	0.44	0.76	5.3%	4.0%	0.639	0.428
Livestock Transport and Trading Co KPSC	0.182	0.001	0.55%	0.95	32.4	0.1%	38	-1%	4%	0.00	0.01	2.9%	2.6%	0.200	0.152
Danah Al Safat Foodstuff Co KPSC	0.012	0.000	0.00%	0.25	-0.3	0.1%	1	0%	-25%	0.00	0.00	-84.8%	-88.3%	0.029	0.010
<b>Total Basic materials - 3 Companies</b>				<b>1.44</b>	<b>88.13</b>	<b>2.4%</b>	<b>218</b>			<b>0.44</b>	<b>0.77</b>	<b>1.64%</b>	<b>0.90%</b>		

# DAILY MARKET COVERAGE REPORT

NIC MENA SECURITIES - RESEARCH AND STUDIES DEP



Consumer services	Price			Valuation Multiples			MKT Cap	Price Performance		Trading Indicators		ROE	ROA	52 Week (KD)	
Company	Close (KD)	Day Δ	Day % Δ	PBV(X)	PE(X)	DY%	Mn KD	MTD(%)	YTD (%)	Value (Mn KD)	(Mn Shrs)	(%)	(%)	High	Low
Jazeera Airways Co KSCP	0.602	0.001	0.17%	2.99	8.1	5.8%	120	-3%	-45%	0.05	0.08	37.1%	9.3%	1.110	0.372
Kuwait National Cinema Comapany KPSC	0.750	0.000	0.00%	0.86	8.1	6.4%	70	0%	-28%	0.00	0.00	10.6%	8.5%	1.050	0.655
Al Soor Fuel Marketing Company KSCP	0.107	0.000	0.00%	0.65	12.4	4.7%	43	-3%	-14%	0.01	0.05	5.3%	3.9%	0.129	0.096
Oula Fuel Marketing Co KSCP	0.107	0.000	0.00%	0.64	11.2	5.5%	43	-3%	-16%	0.02	0.15	5.7%	3.9%	0.134	0.095
Sultan Center Food Products Company KSCP	0.053	0.000	0.00%	0.66	13.4	0.0%	30	-2%	2%	0.00	0.00	4.9%	3.8%	0.060	0.036
IFA Hotels and Resorts Co KSCP	0.023	0.000	1.30%	0.83	-0.6	0.0%	14	3%	-58%	0.00	0.02	-131.5%	-4.7%	0.063	0.021
Jiyad Holding Co KSCP	0.032	0.000	0.31%	0.29	6.4	0.0%	11	0%	-18%	0.00	0.03	4.5%	3.7%	0.047	0.029
Kuwait Resorts Company KPSC	0.048	0.002	3.24%	0.33	8.7	0.0%	9	1%	-23%	0.05	1.11	3.8%	3.8%	0.064	0.040
Future Kid Entertainment and Real Estate Co	0.089	0.000	0.00%	0.54	35.1	12.4%	10	1%	1%	0.00	0.00	1.5%	2.6%	0.110	0.069
Al Eid Food Company KSCP	0.085	0.000	0.00%	0.48	5.7	0.0%	9	-4%	8%	0.00	0.00	8.4%	8.4%	0.096	0.046
Alrai Media Group Co KSCP	0.037	0.000	0.00%	0.83	-2.4	0.0%	9	0%	-2%	0.00	0.00	-34.2%	-19.3%	0.049	0.029
Kuwait Hotels Co KPSC	0.096	-0.005	-4.95%	1.35	-5.5	0.0%	5	15%	-4%	0.00	0.00	-24.4%	-13.2%	0.101	0.069
Palms Agro Production Co KSCP	0.060	0.000	0.00%	0.51	-42.3	16.6%	3	0%	49%	0.00	0.00	-1.2%	0.2%	0.060	0.025
Kuwait Cable Vision Company KPSC	0.014	0.000	0.00%	0.52	-11.6	0.0%	1	0%	0%	0.00	0.00	-4.5%	-3.0%	0.027	0.012
<b>Total Consumer services - 14 Companies</b>				<b>0.85</b>	<b>35.80</b>	<b>4.7%</b>	<b>377</b>			<b>0.12</b>	<b>1.44</b>	<b>2.38%</b>	<b>2.72%</b>		

Financial services	Price			Valuation Multiples			MKT Cap	Price Performance		Trading Indicators		ROE	ROA	52 Week (KD)	
Company	Close (KD)	Day Δ	Day % Δ	PBV(X)	PE(X)	DY%	Mn KD	MTD(%)	YTD (%)	Value (Mn KD)	(Mn Shrs)	(%)	(%)	High	Low
Egypt Kuwait Holding Co SAE	0.357	0.000	0.00%	2.12	12.1	5.5%	366	-5%	-21%	0.00	0.00	17.6%	12.6%	0.500	0.318
Kuwait Projects Company Holding KSCP	0.149	-0.001	-0.67%	0.80	9.0	6.2%	270	1%	-31%	0.15	0.98	8.9%	4.0%	0.231	0.147
National Industries Group Holding KPSC	0.155	0.000	0.00%	0.59	4.8	7.0%	221	0%	-35%	0.24	1.58	12.3%	7.0%	0.261	0.121
GFH Financial Group BSC	0.048	0.000	0.21%	0.57	7.1	5.5%	176	1%	-30%	0.02	0.32	8.0%	1.1%	0.075	0.042
Alimtiiaz Investment Group Co KSCP	0.088	0.000	-0.45%	0.44	4.8	8.7%	94	1%	-30%	0.02	0.24	9.1%	6.1%	0.141	0.071
Commercial Facilities Co SAKP	0.186	-0.003	-1.59%	0.58	7.2	9.0%	94	-2%	-14%	0.00	0.00	8.0%	4.4%	0.235	0.179
National Investments Co KSCP	0.101	0.000	0.00%	0.45	7.5	8.0%	81	-2%	-27%	0.00	0.04	5.9%	5.7%	0.155	0.080
Tamdeen Investment Co KSCP	0.238	-0.012	-4.80%	0.29	9.9	5.0%	81	0%	-28%	0.00	0.00	3.0%	3.3%	0.400	0.199
Kuwait Investment Company KPSC	0.106	0.001	0.95%	0.46	3.3	9.5%	58	0%	-29%	0.00	0.00	13.9%	7.8%	0.172	0.095
Noor Financial Investment Co KPSC	0.138	0.000	0.00%	0.86	6.9	3.5%	56	1%	17%	0.04	0.25	12.5%	10.1%	0.184	0.076

# DAILY MARKET COVERAGE REPORT

## NIC MENA SECURITIES - RESEARCH AND STUDIES DEP



Financial services	Price			Valuation Multiples			MKT Cap	Price Performance		Trading Indicators		ROE	ROA	52 Week (KD)	
Company	Close (KD)	Day Δ	Day % Δ	PBV(X)	PE(X)	DY%	Mn KD	MTD(%)	YTD (%)	Value (Mn KD)	(Mn Shrs)	(%)	(%)	High	Low
Al Bareeq Holding KSCP	0.105	0.000	0.00%	1.10	21.0	0.0%	46	0%	5%	0.00	0.00	5.2%	5.1%	0.110	0.100
Kuwait Financial Centre KPSC	0.073	0.000	-0.41%	0.37	5.0	6.8%	35	0%	-31%	0.01	0.07	7.3%	5.1%	0.121	0.070
Aayan Leasing and Investment Co KSCP	0.044	0.000	0.00%	0.52	-2.4	4.1%	35	4%	-6%	0.00	0.09	-21.4%	-4.4%	0.066	0.032
Arabi Group Holdings KSCP	0.198	0.000	0.00%	1.07	-19.9	0.0%	33	0%	-28%	0.00	0.00	-5.4%	3.6%	0.337	0.074
Arzan Financial Group for Financing and Invest	0.039	0.000	-0.26%	0.31	28.4	0.0%	31	0%	65%	0.01	0.35	1.1%	2.3%	0.047	0.022
Privatization Holding Co KPSC	0.040	0.000	0.00%	0.29	-36.1	0.0%	24	-6%	-19%	0.00	0.02	-0.8%	0.8%	0.059	0.037
Asiya Capital Investments Company KSCP	0.031	0.001	2.31%	0.33	16.0	0.2%	24	2%	-24%	0.00	0.02	2.1%	2.1%	0.041	0.029
KAMCO Investment Co KSCP	0.072	0.002	2.14%	0.43	8.1	0.0%	24	1%	-21%	0.01	0.08	5.4%	5.9%	0.111	0.060
Kuwait and Middle East Financial Investment (	0.095	0.002	2.15%	1.54	37.9	0.0%	25	1%	6%	0.29	3.11	4.1%	4.3%	0.108	0.052
Umm Al Qaiwain General Investment Co PSC	0.067	0.000	0.00%	0.45	12.5	5.5%	24	0%	0%	0.00	0.00	3.6%	3.3%	0.087	0.052
Securities House KSCP	0.039	0.000	0.77%	0.53	-57.2	0.0%	22	0%	-15%	0.02	0.42	-0.9%	1.4%	0.050	0.027
Gulf Investment House KSCP	0.059	0.003	4.98%	0.66	109.1	0.0%	24	6%	-8%	0.08	1.39	0.6%	0.5%	0.078	0.038
Coast Investment and Development Co KSCP	0.030	-0.001	-4.14%	0.32	30.0	0.0%	18	-1%	-25%	0.00	0.09	1.1%	1.1%	0.045	0.026
Bayan Investment Co KSCP	0.049	0.000	0.00%	0.49	-25.1	0.0%	18	-1%	27%	0.00	0.00	-1.9%	-0.9%	0.053	0.031
First Investment Co KSCP	0.028	0.000	-1.41%	0.43	-0.4	0.0%	18	0%	-18%	0.12	4.17	-113.6%	63.0%	0.045	0.022
Al Madar Finance and Investment Co KSCP	0.078	0.000	-0.38%	0.70	11.6	0.0%	16	-7%	-21%	0.00	0.06	6.1%	3.0%	0.148	0.062
Inoest BSC Public	0.058	-0.001	-0.85%	0.40	7.8	10.2%	17	-1%	-9%	0.00	0.05	5.2%	2.7%	0.070	0.044
Al Manar Financing and Leasing Co KSCC	0.049	0.000	0.00%	0.44	12.5	1.1%	15	0%	-6%	0.00	0.00	3.5%	2.8%	0.060	0.037
Osoul Investment Co KSCP	0.083	0.000	0.00%	0.59	6.6	0.0%	12	2%	11%	0.00	0.00	9.0%	8.7%	0.121	0.059
National International Holding Co KSCP	0.068	0.000	0.00%	0.34	7.8	4.5%	14	0%	-11%	0.00	0.00	4.4%	4.7%	0.085	0.051
Kuwait Finance and Investment Company KSC	0.043	-0.001	-3.19%	0.34	19.1	0.0%	13	-3%	-14%	0.00	0.00	1.8%	2.3%	0.058	0.038
Manazel Holding Co KPSC	0.029	0.000	0.70%	0.63	18.5	0.0%	12	-2%	-27%	0.01	0.27	3.4%	1.2%	0.048	0.021
Amar Finance and Leasing Company KSCP	0.045	-0.002	-4.86%	0.50	37.7	0.0%	9	-9%	18%	0.00	0.02	1.3%	1.3%	0.066	0.030
UniCap Investment and Finance Co KSCP	0.038	0.000	0.26%	0.38	-19.0	0.0%	9	5%	-31%	0.00	0.01	-2.0%	0.3%	0.057	0.035
Gulf North Africa Holding Co KPSC	0.057	0.001	1.80%	0.75	72.8	0.0%	8	5%	-9%	0.00	0.05	1.0%	2.5%	0.062	0.052
International Financial Advisors KPSC	0.030	0.000	-0.66%	0.91	-0.4	2.1%	7	3%	-44%	0.00	0.00	-222.8%	-17.0%	0.060	0.027
Kuwait Syrian Holding Co KSCP	0.034	-0.001	-1.47%	0.29	-17.2	0.0%	6	-15%	7%	0.00	0.00	-1.7%	-1.1%	0.044	0.022
Amwal International Investment Company KSC	0.038	0.000	0.00%	0.71	14.0	0.0%	7	0%	27%	0.00	0.00	5.0%	6.3%	0.056	0.030
Al Salam Group Holding Co KSCP	0.022	0.001	6.73%	0.19	167.6	0.0%	6	9%	-24%	0.15	6.67	0.1%	0.1%	0.039	0.018
Warba Capital Holding Co KSC	0.047	0.000	0.00%	0.52	-7.5	0.0%	5	-13%	-27%	0.00	0.00	-7.0%	-5.0%	0.120	0.045
Credit Rating and Collection Company KSCP	0.035	0.000	0.00%	1.08	-23.7	0.0%	6	0%	76%	0.00	0.00	-4.6%	-4.3%	0.037	0.015
National Consumer Holding Company KSCP	0.055	0.000	0.00%	0.61	269.6	0.0%	5	0%	0%	0.00	0.00	0.2%	0.3%	0.100	0.010
Al Madina for Finance and Investment Co KSC	0.012	0.001	5.50%	0.39	-2.2	0.0%	5	11%	-24%	0.09	7.88	-17.9%	-7.7%	0.019	0.009
Ekttitab Holding Co KSCP	0.014	0.000	-2.86%	0.33	-9.6	0.0%	4	0%	-9%	0.02	1.34	-3.4%	-3.0%	0.019	0.010
Al Deera Holding Co KPSC	0.016	-0.001	-5.33%	0.70	-9.0	0.0%	3	-6%	-20%	0.00	0.04	-7.7%	-2.2%	0.022	0.011
Al Mal Investment Company KPSC	0.009	0.000	-2.15%	0.40	-0.8	0.0%	3	3%	-6%	0.00	0.13	-47.6%	-23.1%	0.016	0.008
Gulf Franchising Holding Co KSCP	0.065	0.000	0.00%	1.01	-2.8	0.0%	3	0%	-14%	0.00	0.00	-36.2%	-10.8%	0.160	0.001
Tamkeen Holding KSCC	0.005	0.000	0.00%	0.05	-7.2	0.0%	0	0%	0%	0.00	0.00	-0.7%	-0.7%	0.007	0.005
<b>Total Financial services - 48 Companies</b>				<b>0.60</b>	<b>14.38</b>	<b>5.0%</b>	<b>2,084</b>			<b>1.28</b>	<b>29.74</b>	<b>4.18%</b>	<b>4.11%</b>		

# DAILY MARKET COVERAGE REPORT

## NIC MENA SECURITIES - RESEARCH AND STUDIES DEP



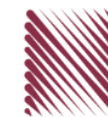
Health care	Price			Valuation Multiples			MKT Cap	Price Performance		Trading Indicators		ROE	ROA	52 Week (KD)	
Company	Close (KD)	Day Δ	Day % Δ	PBV(X)	PE(X)	DY%	Mn KD	MTD(%)	YTD (%)	Value (Mn KD)	(Mn Shrs)	(%)	(%)	High	Low
Al-Maidan Clinic for Oral Health Services Com	1.220	0.000	0.00%	7.90	47.8	0.6%	305	0%	0%	0.00	0.00	16.5%	11.6%	1.240	1.220
Advanced Technology Co KSCP	0.660	0.000	0.00%	1.72	53.7	2.3%	99	0%	-19%	0.00	0.00	3.2%	3.5%	1.000	0.580
Yiaco Medical Company KPSC	0.707	0.000	0.00%	6.06	52.7	0.0%	12	0%	0%	0.00	0.00	11.5%	3.1%	0.707	0.707
<b>Total Health care - 3 Companies</b>				<b>4.24</b>	<b>49.21</b>	<b>1.0%</b>	<b>416</b>			<b>0.00</b>	<b>0.00</b>	<b>8.61%</b>	<b>4.68%</b>		

Industrials	Price			Valuation Multiples			MKT Cap	Price Performance		Trading Indicators		ROE	ROA	52 Week (KD)	
Company	Close (KD)	Day Δ	Day % Δ	PBV(X)	PE(X)	DY%	Mn KD	MTD(%)	YTD (%)	Value (Mn KD)	(Mn Shrs)	(%)	(%)	High	Low
Agility Public Warehousing Co KSCP	0.644	-0.001	-0.16%	1.12	14.2	2.8%	1,232	1%	-9%	0.80	1.23	7.9%	6.5%	0.748	0.357
Human Soft Holding Company KSCP	2.590	-0.081	-3.03%	3.92	8.8	7.1%	315	-5%	-14%	1.51	0.58	44.6%	33.0%	3.470	1.944
ALAFCO Aviation Lease and Finance Compan	0.154	0.000	0.00%	0.46	8.3	6.5%	147	1%	-43%	0.28	1.79	5.5%	3.7%	0.283	0.138
Kuwait Cement Co KSCP	0.165	-0.001	-0.60%	0.56	29.3	9.0%	118	1%	-33%	0.01	0.08	1.9%	2.3%	0.285	0.144
Gulf Cable and Electrical Industries Co KPSC	0.579	0.001	0.17%	0.70	28.7	4.7%	122	2%	19%	0.10	0.17	2.4%	2.7%	0.611	0.390
Integrated Holding Co KSCC	0.378	-0.002	-0.53%	1.21	10.5	10.6%	83	0%	-31%	0.11	0.30	11.5%	9.6%	0.600	0.360
Kuwait Portland Cement Co KPSC	0.735	0.001	0.14%	0.99	9.7	13.4%	74	5%	-25%	0.00	0.00	10.2%	8.8%	1.215	0.683
United Projects for Aviation Services Co KSCF	0.465	0.000	0.00%	0.98	8.0	4.5%	74	0%	-9%	0.00	0.00	12.3%	9.1%	0.512	0.367
Heavy Engineering Industries and Shipbuilding	0.350	-0.002	-0.57%	1.01	5.6	8.3%	63	0%	-14%	0.03	0.08	18.0%	7.1%	0.419	0.298
Educational Holding Group KSCP	0.290	0.000	0.00%	1.68	9.2	5.2%	71	0%	-34%	0.00	0.00	18.3%	17.8%	0.475	0.228
National Industries Company KPSC	0.162	0.000	0.00%	0.69	13.5	6.0%	58	0%	-2%	0.00	0.00	5.1%	7.8%	0.182	0.143
ACICO Industries Company KSCP	0.097	0.000	0.00%	0.31	12.7	5.1%	32	-5%	-27%	0.00	0.00	2.5%	2.8%	0.145	0.081
Kuwait Company for Process Plant Constructi	0.293	0.003	1.03%	1.16	6.3	6.1%	31	4%	22%	0.02	0.06	18.5%	8.4%	0.337	0.173
Ras Al Khaimah for White Cement and Constr	0.065	0.000	0.00%	0.51	19.9	8.4%	33	0%	0%	0.00	0.00	2.6%	4.7%	0.080	0.053
Gulf Cement Co PSC	0.038	0.000	0.00%	0.38	-13.9	10.9%	31	0%	-31%	0.00	0.00	-2.7%	-2.0%	0.063	0.032
Combined Group Contracting Company KSCP	0.167	-0.001	-0.60%	0.58	7.5	12.3%	27	2%	-36%	0.03	0.19	7.7%	3.0%	0.264	0.150
Sharjah Cement and Industrial Development C	0.042	0.000	0.00%	0.21	25.3	12.4%	26	0%	0%	0.00	0.00	0.8%	1.2%	0.067	0.042
KGL Logistics Company KPSC	0.025	0.000	-1.60%	0.18	4.0	0.1%	19	6%	-33%	0.01	0.59	4.6%	3.7%	0.043	0.023
Fujairah Cement Industries Co PSC	0.030	0.000	0.00%	0.12	14.5	14.0%	11	0%	-33%	0.00	0.00	0.8%	2.3%	0.055	0.030
Shuaiba Industrial Company KPSC	0.124	0.000	0.00%	0.70	38.5	8.0%	12	0%	-20%	0.00	0.00	1.8%	2.0%	0.180	0.122
Kuwait and Gulf Link Transport Company KPS	0.047	0.000	0.64%	0.20	14.2	0.0%	13	0%	-29%	0.01	0.24	1.4%	2.2%	0.081	0.042
National Cleaning Co KSCP	0.051	0.000	0.00%	0.33	7.4	9.1%	12	-2%	-26%	0.00	0.05	4.4%	2.3%	0.088	0.047
Mubarrad Holding Co KSCP	0.056	0.002	3.88%	0.45	9.1	8.3%	9	0%	-36%	0.00	0.00	4.9%	5.1%	0.089	0.049
Specialities Group Holding Company KPSC	0.066	-0.001	-1.05%	0.32	7.1	0.0%	9	-3%	-23%	0.00	0.04	4.5%	7.1%	0.086	0.055
Hilal Cement Company KSCP	0.068	0.000	0.00%	0.60	-5.6	21.9%	7	0%	-32%	0.00	0.00	-10.6%	-5.3%	0.100	0.063
National Ranges Co KPSC	0.017	0.000	1.85%	0.30	-1.2	0.0%	5	9%	65%	0.00	0.12	-24.9%	-4.2%	0.018	0.007
Metal and Recycling Co KSCP	0.043	0.000	0.00%	0.36	-1.8	0.0%	4	-5%	-13%	0.00	0.00	-19.7%	-7.2%	0.070	0.020
Salbookh Trading Co KSCP	0.030	-0.002	-4.84%	0.40	-1.7	0.0%	3	-2%	-41%	0.00	0.07	-23.2%	-15.3%	0.051	0.026
Equipment Holding Co KSCP	0.014	0.000	0.00%	0.27	-155.9	0.0%	2	0%	-38%	0.00	0.00	-0.2%	0.4%	0.024	0.013
<b>Total Industrials - 29 Companies</b>				<b>0.84</b>	<b>12.59</b>	<b>5.3%</b>	<b>2,642</b>			<b>2.92</b>	<b>5.59</b>	<b>6.67%</b>	<b>5.05%</b>		



# DAILY MARKET COVERAGE REPORT

NIC MENA SECURITIES - RESEARCH AND STUDIES DEP



Insurance	Price			Valuation Multiples			MKT Cap	Price Performance		Trading Indicators		ROE	ROA	52 Week (KD)		
	Company	Close (KD)	Day Δ	Day % Δ	PBV(X)	PE(X)		DY%	Mn KD	MTD(%)	YTD (%)			Value (Mn KD)	(Mn Shrs)	(%)
Gulf Insurance Group KSCP	0.600	0.044	7.91%	0.99	8.0	6.4%	107	8%	-9%	0.01	0.01	12.3%	3.0%	0.687	0.556	
Al Ahleia Insurance Co SAKP	0.415	0.000	0.00%	0.75	8.0	8.5%	82	0%	-3%	0.00	0.00	9.4%	3.7%	0.445	0.385	
Kuwait Insurance Company SAKP	0.345	0.003	0.88%	0.57	6.7	6.9%	64	1%	5%	0.01	0.03	8.5%	4.9%	0.387	0.298	
Kuwait Reinsurance Company KSCP	0.188	0.000	0.00%	0.71	8.0	2.3%	38	0%	36%	0.00	0.00	8.9%	3.4%	0.188	0.126	
Bahrain Kuwait Insurance Co BSC	0.200	0.000	0.00%	0.93	12.9	6.1%	28	0%	0%	0.00	0.00	7.2%	0.9%	0.200	0.200	
Warba Insurance Company KSCP	0.079	0.000	0.00%	0.34	11.0	0.0%	13	0%	28%	0.00	0.00	3.1%	1.0%	0.096	0.053	
First Takaful Insurance Co KPSC	0.040	0.000	0.00%	0.49	5.1	0.0%	4	0%	5%	0.00	0.00	9.6%	6.3%	0.056	0.031	
Wethaq Takaful Insurance Co KCSP	0.024	0.000	0.00%	0.22	-30.8	0.0%	3	-4%	-3%	0.00	0.00	-0.7%	-0.7%	0.035	0.018	
<b>Total Insurance - 8 Companies</b>				<b>0.72</b>	<b>8.07</b>	<b>6.2%</b>	<b>339</b>				<b>0.02</b>	<b>0.05</b>	<b>8.86%</b>	<b>3.00%</b>		

Oil and Gas	Price			Valuation Multiples			MKT Cap	Price Performance		Trading Indicators		ROE	ROA	52 Week (KD)		
	Company	Close (KD)	Day Δ	Day % Δ	PBV(X)	PE(X)		DY%	Mn KD	MTD(%)	YTD (%)			Value (Mn KD)	(Mn Shrs)	(%)
Burgan for Well Drilling Trading and Maintenanc	0.070	0.000	0.00%	0.25	7.1	0.0%	16	0%	-13%	0.00	0.00	3.6%	3.2%	0.098	0.062	
Energy House Holding Company KSCP	0.021	0.000	0.00%	0.65	-2.9	0.0%	16	-5%	-8%	0.00	0.00	-22.5%	-15.6%	0.036	0.014	
Gulf Petroleum Investment Company KSCP	0.017	0.001	6.21%	0.19	-5.5	0.0%	8	16%	-15%	0.64	38.15	-3.4%	-2.2%	0.025	0.012	
Independent Petroleum Group KSCP	0.380	0.000	0.00%	0.70	10.4	7.9%	69	0%	-21%	0.00	0.00	6.8%	2.2%	0.497	0.375	
National Petroleum Services Company KSCP	1.020	0.000	0.00%	2.43	8.7	6.9%	99	-10%	-13%	0.00	0.00	27.9%	25.2%	1.389	0.903	
Senergy Holding Company KSCP	0.016	0.000	-0.62%	0.32	-0.7	0.0%	3	-2%	-24%	0.01	0.44	-47.9%	-28.9%	0.027	0.014	
<b>Total Oil and Gas - 6 Companies</b>				<b>0.76</b>	<b>24.43</b>	<b>5.8%</b>	<b>210</b>				<b>0.65</b>	<b>38.59</b>	<b>3.10%</b>	<b>2.18%</b>		

Real estate	Price			Valuation Multiples			MKT Cap	Price Performance		Trading Indicators		ROE	ROA	52 Week (KD)	
	Company	Close (KD)	Day Δ	Day % Δ	PBV(X)	PE(X)		DY%	Mn KD	MTD(%)	YTD (%)			Value (Mn KD)	(Mn Shrs)
Mabane Company KPSC	0.635	-0.003	-0.47%	1.48	12.4	1.6%	702	5%	-26%	0.34	0.54	11.9%	6.1%	0.877	0.434
Salhia Real Estate Co KSCP	0.400	-0.001	-0.25%	1.21	9.2	5.0%	198	1%	-4%	0.00	0.01	13.2%	6.2%	0.460	0.324
Commercial Real Estate Co KPSC	0.092	0.001	1.10%	0.56	11.4	6.2%	166	-4%	-2%	0.01	0.09	5.0%	3.8%	0.103	0.083
Tamdeen Real Estate Co KPSC	0.260	0.009	3.59%	0.39	13.2	3.7%	109	0%	-19%	0.03	0.11	3.0%	2.3%	0.343	0.248
National Real Estate Co KSCP	0.073	-0.001	-0.68%	0.38	9.2	0.0%	105	1%	-20%	0.03	0.36	4.2%	2.3%	0.095	0.060
Kuwait Real Estate Company KPSC	0.082	0.000	0.00%	0.55	10.0	0.5%	71	0%	-22%	0.00	0.02	5.5%	5.9%	0.115	0.070
United Real Estate Company SAKP	0.050	0.000	0.00%	0.29	-7.4	0.0%	53	0%	-19%	0.00	0.00	-3.9%	1.4%	0.065	0.049

# DAILY MARKET COVERAGE REPORT

## NIC MENA SECURITIES - RESEARCH AND STUDIES DEP



Real estate Company	Price			Valuation Multiples			MKT Cap	Price Performance		Trading Indicators		ROE	ROA	52 Week (KD)	
	Close (KD)	Day Δ	Day % Δ	PBV(X)	PE(X)	DY%	Mn KD	MTD(%)	YTD (%)	Value (Mn KD)	(Mn Shrs)	(%)	(%)	High	Low
First Dubai for Real Estate Development Co KSC	0.036	0.001	1.71%	0.48	39.2	1.1%	36	1%	0%	0.00	0.04	1.2%	2.1%	0.055	0.026
Al Mazaya Holding Company KSCP	0.049	-0.001	-2.00%	0.38	-3.5	0.1%	31	2%	-16%	0.00	0.02	-11.0%	-0.9%	0.067	0.047
Dar Al Thuraya Real Estate Co KPSC	0.131	0.014	11.97%	1.24	34.5	0.0%	19	-6%	87%	0.00	0.00	3.6%	-1.2%	0.190	0.040
Injazzat Real Estate Development Company K	0.080	0.000	0.00%	0.51	-3.8	8.6%	27	0%	0%	0.00	0.00	-13.4%	-6.9%	0.091	0.061
Ajjal Real Estate Entertainment Co KSCP	0.133	-0.001	-0.75%	0.20	12.2	0.0%	25	-1%	-27%	0.03	0.19	1.6%	1.9%	0.224	0.121
Arkan Al Kuwait Real Estate Company KSCP	0.084	0.000	0.00%	0.59	9.0	9.4%	21	0%	-6%	0.00	0.00	6.6%	7.1%	0.100	0.076
Al Argan International Real Estate Co KSCP	0.082	0.001	1.24%	0.24	26.4	6.0%	21	2%	-22%	0.00	0.00	0.9%	2.8%	0.144	0.060
Al-Enmaa Real Estate Company KSCP	0.038	-0.001	-2.56%	0.38	10.0	0.0%	17	1%	-39%	0.00	0.12	3.8%	2.5%	0.079	0.037
Aayan Real Estate Company KSCP	0.052	0.000	0.00%	0.29	9.6	9.7%	20	-1%	-30%	0.00	0.00	3.0%	2.8%	0.080	0.048
Dalqan Real Estate Company KSCP	0.350	0.000	0.00%	2.91	59.0	0.0%	19	0%	0%	0.00	0.00	4.9%	5.1%	0.350	0.350
Kuwait Business Town Real Estate Co KSCP	0.028	0.000	0.73%	0.25	7.1	0.3%	17	-1%	-37%	0.00	0.17	3.6%	2.8%	0.046	0.027
Tijara and Realestate Investment Company KS	0.041	0.000	0.00%	0.38	10.8	4.8%	15	0%	-18%	0.00	0.00	3.6%	5.0%	0.055	0.034
Munshaat Real Estate Projects Co KSCP	0.050	0.000	0.00%	0.34	18.4	4.2%	16	-4%	-32%	0.00	0.00	1.8%	-1.2%	0.086	0.047
Aqar Real Estate Investments Co KSCP	0.064	0.000	0.00%	0.46	5.3	7.8%	13	-18%	-21%	0.00	0.00	8.7%	9.3%	0.089	0.062
Sokouk Holding Co KSCP	0.024	0.000	1.27%	0.29	-4.0	0.0%	14	-2%	-33%	0.00	0.05	-7.4%	4.1%	0.040	0.022
Al-Arabiya Real Estate Co KSCP	0.022	-0.001	-3.48%	0.19	6.7	2.8%	11	-1%	-25%	0.01	0.38	2.9%	12.0%	0.033	0.020
Mashaer Holding Co KSCP	0.058	-0.001	-2.18%	0.45	6.3	0.0%	10	-5%	-27%	0.00	0.00	7.1%	5.5%	0.086	0.048
Osos Holding Group Co KSCP	0.098	0.002	1.67%	0.78	7.4	9.7%	10	0%	-2%	0.00	0.00	10.5%	7.3%	0.118	0.089
Abyaar Real Estate Development Company KSC	0.007	0.000	0.00%	0.19	-0.5	0.0%	7	-3%	-15%	0.01	2.22	-40.9%	-12.3%	0.015	0.005
Ream Real Estate Company KSCP	0.065	0.000	0.00%	0.49	-2.6	3.4%	7	0%	-27%	0.00	0.00	-19.0%	-10.1%	0.140	0.060
Investors Holding Group Company KSCP	0.013	0.000	1.56%	0.66	-0.6	0.0%	8	-1%	63%	0.01	1.10	-106.5%	0.0%	0.017	0.007
Al Massaleh Real Estate Co KSCP	0.030	0.000	0.00%	0.33	-4.1	0.0%	7	5%	-20%	0.00	0.00	-8.1%	-2.3%	0.040	0.026
Kuwait Real Estate Holding Co KPSC	0.027	0.000	0.00%	0.04	0.7	6.6%	5	0%	-6%	0.00	0.00	5.5%	2.3%	0.034	0.023
Kuwait Remal Real Estate Co KPSC	0.014	0.001	4.44%	0.21	-1.9	0.0%	4	1%	-42%	0.00	0.30	-11.0%	3.1%	0.029	0.013
Real Estate Trade Centers Company KPSC	0.025	-0.001	-5.00%	0.14	141.9	0.0%	3	-5%	6%	0.00	0.00	0.1%	0.1%	0.050	0.018
Taameer Real Estate Investment Co KSCP	0.018	0.000	0.00%	0.27	-3.9	0.0%	4	-1%	-33%	0.00	0.17	-7.0%	-5.4%	0.034	0.013
Al Masaken International Real Estate Developr	0.038	0.000	0.00%	0.42	46.3	0.4%	4	0%	-13%	0.00	0.00	0.9%	1.2%	0.074	0.027
Mena Real Estate Co KSCP	0.025	0.000	0.00%	0.17	-55.3	0.0%	3	2%	-40%	0.00	0.09	-0.3%	-0.1%	0.043	0.021
Sanam Real Estate Company KSCP	0.028	0.000	0.00%	0.36	38.5	0.0%	3	-5%	-29%	0.00	0.00	0.9%	0.9%	0.043	0.027
Ajwan Gulf Real Estate Co KSCP	0.011	0.000	0.88%	0.21	-8.2	0.0%	2	4%	-24%	0.01	1.21	-2.5%	-2.2%	0.016	0.009
Effect Real Estate Company KPSC	0.021	0.000	0.00%	0.29	-8.9	4.9%	2	0%	0%	0.00	0.00	-3.3%	-0.6%	0.024	0.020
Al Mudon International Real Estate Co KSCP	0.016	0.000	0.00%	0.12	-8.2	0.0%	2	0%	-35%	0.00	0.00	-1.5%	0.0%	0.029	0.015
<b>Total Real estate - 39 Companies</b>				<b>0.59</b>	<b>21.17</b>	<b>2.7%</b>	<b>1,809</b>			<b>0.51</b>	<b>7.20</b>	<b>2.79%</b>	<b>2.96%</b>		

# DAILY MARKET COVERAGE REPORT

## NIC MENA SECURITIES - RESEARCH AND STUDIES DEP



Technology	Price			Valuation Multiples			MKT Cap	Price Performance		Trading Indicators		ROE	ROA	52 Week (KD)	
Company	Close (KD)	Day Δ	Day % Δ	PBV(X)	PE(X)	DY%	Mn KD	MTD(%)	YTD (%)	Value (Mn KD)	(Mn Shrs)	(%)	(%)	High	Low
Automated Systems Company KPSC	0.064	0.000	0.00%	0.50	-62.08	6.3%	6	0%	-10%	0.00	0.00	-0.81%	-0.73%	0.086	0.051
<b>Total Technology - 1 Companies</b>				<b>0.50</b>	<b>-62.08</b>	<b>6.3%</b>	<b>6</b>			<b>0.00</b>	<b>0.00</b>	<b>-0.81%</b>	<b>-0.73%</b>		

Telecom	Price			Valuation Multiples			MKT Cap	Price Performance		Trading Indicators		ROE	ROA	52 Week (KD)	
Company	Close (KD)	Day Δ	Day % Δ	PBV(X)	PE(X)	DY%	Mn KD	MTD(%)	YTD (%)	Value (Mn KD)	(Mn Shrs)	(%)	(%)	High	Low
Mobile Telecommunications Company KSCP	0.554	-0.001	-0.18%	1.85	11.05	5.6%	2,397	1%	-8%	1.575	2.84	16.70%	8.33%	0.604	0.407
Kuwait Telecommunications Company KSCP	0.826	-0.003	-0.36%	1.92	9.46	4.2%	412	0%	5%	0.003	0.00	20.25%	12.02%	0.870	0.680
National Mobile Telecommunications Co KSCF	0.585	0.005	0.86%	0.51	9.73	11.0%	293	2%	-29%	0.057	0.10	5.27%	5.12%	0.835	0.550
AAN Digital Services Co KSCP	0.011	0.001	8.82%	0.33	36.51	0.0%	10	6%	-18%	0.158	14.71	0.91%	1.01%	0.021	0.009
Hayat Communications Co KSCP	0.045	0.000	0.00%	0.38	19.07	0.0%	4	0%	-40%	-	-	2.01%	2.74%	0.098	0.025
<b>Telecom - 5 Companies</b>				<b>1.47</b>	<b>10.70</b>	<b>5.9%</b>	<b>3,116</b>			<b>1.8</b>	<b>17.7</b>	<b>13.70%</b>	<b>7.86%</b>		

<b>Total Market 172 Companies</b>							<b>28,521</b>		<b>-20.2%</b>	<b>25.7</b>	<b>149.9</b>	<b>7.94%</b>	<b>1.41%</b>		
-----------------------------------	--	--	--	--	--	--	---------------	--	---------------	-------------	--------------	--------------	--------------	--	--

### End of Report

The information contained in this document is proprietary to NIC and is for use only by the persons to whom it is issued. This document is confidential and may not be distributed either in part or in whole without the express agreement of NIC. It is intended solely for the use of the individual or entity to whom it is addressed and others authorized to receive it.



شركة الاستثمار الوطنية  
NATIONAL INVESTMENTS COMPANY

Sharq, Al Mutanabi Street, Khaleejia Tower | P.O. Box 25667, Safat 13117, Kuwait

T.: +965 2226 6666 | Fax: +965 2226 6793 | [www.nic.com.kw](http://www.nic.com.kw)