

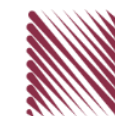
شركة الاستثمارات الوطنية
NATIONAL INVESTMENTS COMPANY

Boursa Kuwait – Daily Market Report
MENA Securities – Research & Studies Dep.

Sunday, September 27, 2020

DAILY MARKET COVERAGE REPORT

NIC MENA SECURITIES - RESEARCH AND STUDIES DEP



Index	Close	DTD Chg Net	DTD (%)	YTD (%)	52W High	52W Low	MKT CAP Bn (KD)	PBV (X)	PE (X)	DY (%)
All Share Index	5,584.42	-24.40	-0.44%	-11.0%	6,416.43	4,339.58	32.36	1.29	15.63	3.76%
Premier Index	6,183.42	-38.22	-0.61%	-11.3%	7,172.32	4,498.65	24.15	1.74	14.51	3.46%
Main Index	4,395.49	4.19	0.10%	-10.4%	4,932.47	3,965.63	8.21	0.73	20.19	4.65%
NIC 50 Index	6,851.46	-36.97	-0.54%	-8.1%	7,517.86	5,014.61	27.32	1.47	14.84	3.69%

Index	Value Mn(KD)	Volume (Mn share)
All Share Index	45.34	338.73
Premier Index	31.85	79.15
Main Index	13.48	259.58
NIC 50 Index	38.28	225.64

Market Breadth	UP ↑	Down ↓	No Chg ↔
All Share Index	51	59	63
Premier Index	3	15	2
Main Index	48	44	61
NIC 50 Index	16	28	6

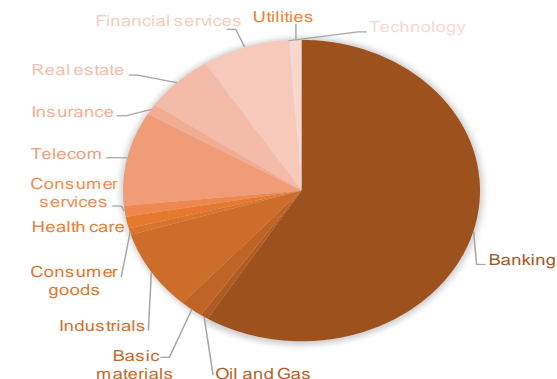
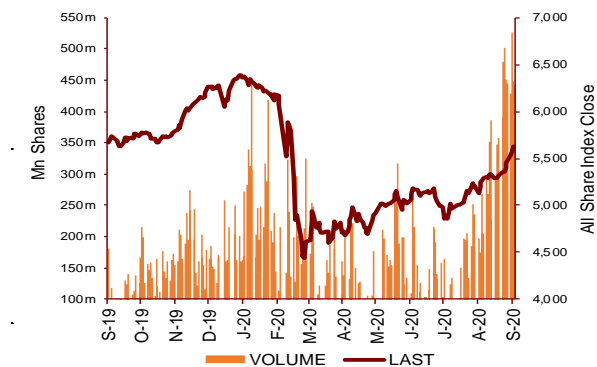
Today's Top 5 Gainer %	Close KD	Value KD	DTD (%)
Kuwait and Gulf Link Transport	0.051	379,100	9.48%
Tamdeen Real Estate	0.289	121,128	9.06%
First Investment	0.034	755,353	7.03%
Jiyad Holding	0.044	100,865	6.10%
Kuwait Syrian Holding Co	0.027	4,500	5.88%

Today's Top 5 Loser %	Close KD	Value KD	DTD (%)
Dar Al Thuraya Real Estate	0.064	2,633	-9.55%
Gulf Investment House	0.096	213,998	-8.48%
National Consumer Holding	0.046	342	-5.00%
Real Estate Trade Centers	0.029	2,442	-4.85%
Arkan Al Kuwait Real Estat	0.082	1,363	-4.68%

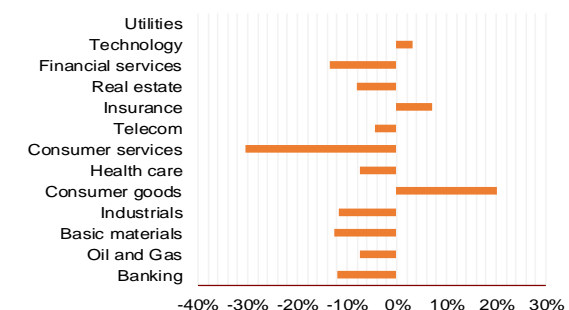
Today's Top 5 by Value	Close KD	DTD Chg	Trade Val Mn(KD)
Kuwait Finance House	0.684	-1.30%	12.00
National Bank of Kuwait	0.890	-0.45%	2.99
Aayan Leasing and Investment	0.099	1.65%	2.67
Warba Bank	0.252	1.61%	2.63
Kuwait International Bank	0.194	-1.02%	2.36

Top 5 by Volume	Close KD	DTD Chg	Trade Vol Mn(Shrs)
Investors Holding Group	0.018	0.00%	29.34
Aayan Leasing and Investrn	0.099	1.65%	27.10
Al-Arabiya Real Estate	0.029	5.09%	25.70
First Investment	0.034	7.03%	22.27
Arzan Financial Group for f	0.056	2.75%	18.91

Sector	Close	DTD Chg Net	DTD (%)	YTD (%)	52W High	52W Low	MKT CAP Bn (KD)	PBV (X)	PE (X)	DY (%)
Banking	1,306.58	-8.550	-0.65%	-11.9%	1,536.8	986.4	19.04	1.73	15.87	3.3%
Oil and Gas	1,146.49	0.020	0.00%	-7.4%	1,372.2	985.7	0.23	0.83	26.84	5.3%
Basic materials	794.52	4.070	0.51%	-12.5%	991.8	561.7	0.67	0.96	14.61	7.6%
Industrials	820.52	-3.720	-0.45%	-11.5%	937.5	602.9	2.80	0.89	13.34	5.0%
Consumer goods	765.19	-3.750	-0.49%	20.1%	810.7	548.6	0.23	1.52	92.74	2.2%
Health care	820.13	0.000	0.00%	-7.3%	921.9	815.0	0.41	4.14	48.09	1.0%
Consumer services	744.38	8.370	1.14%	-30.6%	1,083.1	674.8	0.38	0.85	35.75	4.7%
Telecom	1,068.11	-1.140	-0.11%	-4.4%	1,116.7	802.2	3.27	1.54	11.24	5.6%
Insurance	1,021.49	3.660	0.36%	7.1%	1,028.2	901.0	0.36	0.77	8.68	5.7%
Real estate	973.71	1.070	0.11%	-8.0%	1,083.4	763.2	2.05	0.67	23.98	2.4%
Financial services	936.16	-3.140	-0.33%	-13.4%	1,097.0	801.4	2.55	0.73	16.54	4.1%
Technology	531.08	-7.270	-1.35%	3.1%	632.9	371.0	0.01	0.57	-70.81	5.5%
Utilities	876.32	-5.260	-0.60%	0.0%	1,042.1	781.6	0.37	4.78	29.78	0.0%
	5,584.42	-24.40	-0.44%	-11.0%	6,416.4	4,339.6	32.36	1.29	15.63	3.76%



YTD Sector Performance %



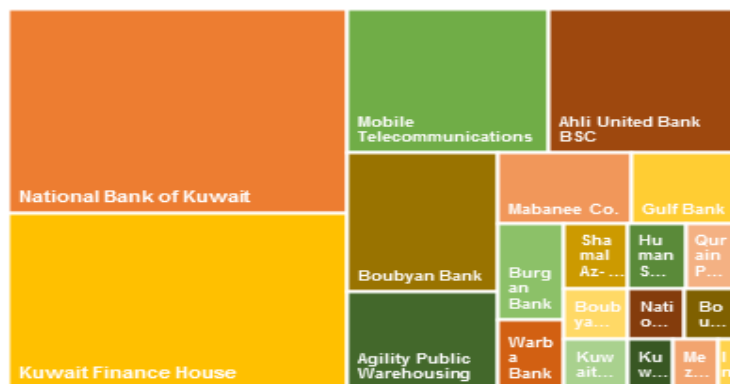
DAILY MARKET COVERAGE REPORT

NIC MENA SECURITIES - RESEARCH AND STUDIES DEP

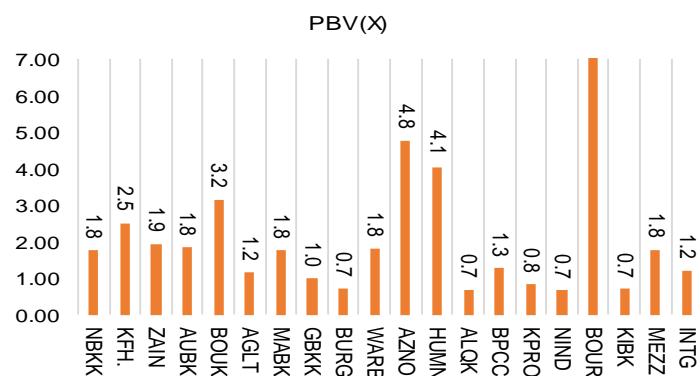


Premier Market	Price			Valuation Multiples			MKT Cap	Price Performance		Trading Indicators		ROE	ROA	52 Week (KD)	
	Close (KD)	Day Δ	Day % Δ	PBV(X)	PE(X)	DY%	Mn KD	MTD(%)	YTD (%)	Value (Mn KD)	(Mn Shrs)	(%)	(%)	High	Low
National Bank of Kuwait	0.890	-0.004	-0.45%	1.76	15.06	3.5%	6,044	3%	-13%	2.99	3.36	11.7%	1.4%	1.062	0.654
Kuwait Finance House	0.684	-0.009	-1.30%	2.52	20.68	2.4%	5,191	9%	-7%	12.00	17.44	12.2%	1.3%	0.761	0.473
Mobile Telecommunications	0.584	-0.001	-0.17%	1.95	11.65	5.3%	2,527	-1%	-2%	1.84	3.14	16.7%	4.6%	0.604	0.407
Ahli United Bank BSC	0.243	-0.001	-0.41%	1.83	10.70	5.0%	2,345	5%	-17%	1.93	7.90	17.1%	1.8%	0.311	0.160
Boubyan Bank	0.601	-0.003	-0.50%	3.16	29.05	1.1%	1,820	4%	-1%	0.14	0.23	10.9%	1.2%	0.638	0.380
Agility Public Warehousing	0.673	-0.005	-0.74%	1.17	14.84	2.7%	1,288	8%	-5%	1.10	1.62	7.9%	4.2%	0.748	0.357
Mabane Co.	0.751	-0.007	-0.92%	1.75	14.71	1.4%	830	18%	-12%	0.35	0.47	11.9%	5.8%	0.877	0.434
Gulf Bank	0.226	-0.004	-1.74%	0.99	10.31	4.4%	656	7%	-25%	1.75	7.69	9.6%	1.0%	0.317	0.180
Burgan Bank	0.210	0.001	0.48%	0.73	6.50	5.4%	550	6%	-31%	0.78	3.69	11.3%	1.2%	0.324	0.175
Warba Bank	0.252	0.004	1.61%	1.82	24.00	0.0%	397	27%	-4%	2.63	10.39	7.6%	0.5%	0.279	0.164
Shamal Az-Zour Al-Oula Power & Water	0.333	-0.002	-0.60%	4.78	29.78	0.0%	366	4%	0%	1.61	4.83	16.1%	2.3%	0.500	0.297
Human Soft Holding	2.678	-0.005	-0.19%	4.05	9.08	6.9%	326	6%	-11%	0.15	0.06	44.6%	30.3%	3.470	1.944
Qurain Petrochemical Industries	0.282	0.003	1.08%	0.69	10.20	5.4%	288	-1%	-9%	0.21	0.73	6.7%	3.6%	0.323	0.163
Boubyan Petrochemical	0.563	0.000	0.00%	1.27	24.02	9.2%	284	5%	-16%	0.02	0.04	5.3%	2.1%	0.800	0.395
Kuwait Projects Company Holding	0.155	-0.003	-1.90%	0.83	9.36	6.0%	281	5%	-28%	0.34	2.19	8.9%	0.3%	0.225	0.147
National Industries Group Holding	0.176	-0.001	-0.56%	0.66	5.42	6.1%	251	13%	-27%	0.38	2.13	12.3%	3.7%	0.247	0.121
Boursa Kuwait Securities Co	1.176	-0.004	-0.34%	7.36	24.62	0.0%	236	0%	0%	1.19	1.00	29.9%	26.5%	1.210	0.990
Kuwait International Bank	0.194	-0.002	-1.02%	0.70	11.54	5.2%	198	13%	-26%	2.36	12.05	6.1%	0.6%	0.270	0.162
Mezzan Holding	0.621	-0.003	-0.48%	1.79	33.56	2.7%	189	-4%	24%	0.08	0.12	5.3%	2.2%	0.665	0.428
Integrated Holding	0.380	0.000	0.00%	1.22	10.58	10.5%	84	9%	-31%	0.02	0.06	11.5%	8.5%	0.600	0.342
Total		-38.22	-0.61%	1.74	14.51	3.46%	24,151	5.7%	-11.3%	31.85	79.15	12.01%	1.56%		

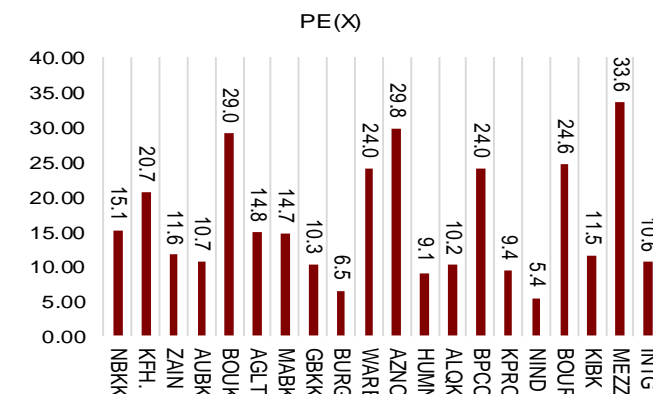
Market Capitalization



Price to Book Value

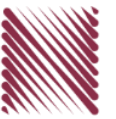


Price to Earning Value

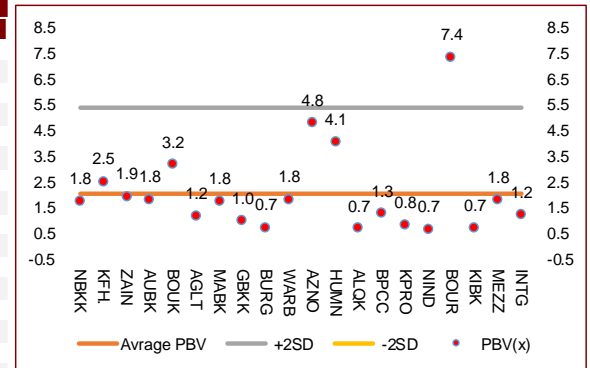


DAILY MARKET COVERAGE REPORT

NIC MENA SECURITIES - RESEARCH AND STUDIES DEP



Premier Market	Price			Valuation Multiples			MKT Cap	Price Performance		ROE	ROA
Company	Close (KD)	Day Δ	Day % Δ	PBV(X)	PE(X)	DY%	Mn KD	MTD(%)	YTD (%)	(%)	(%)
National Bank of Kuwait	0.890	-0.004	-0.45%	1.76	15.1	3.5%	6,044	3.3%	-12.9%	11.7%	1.4%
Kuwait Finance House	0.684	-0.009	-1.30%	2.52	20.7	2.4%	5,191	9.4%	-7.1%	12.2%	1.3%
Mobile Telecommunications	0.584	-0.001	-0.17%	1.95	11.6	5.3%	2,527	-0.8%	-2.5%	16.7%	4.6%
Ahli United Bank BSC	0.243	-0.001	-0.41%	1.83	10.7	5.0%	2,345	4.7%	-16.9%	17.1%	1.8%
Boubyan Bank	0.601	-0.003	-0.50%	3.16	29.0	1.1%	1,820	4.2%	-1.4%	10.9%	1.2%
Agility Public Warehousing	0.673	-0.005	-0.74%	1.17	14.8	2.7%	1,288	8.0%	-5.2%	7.9%	4.2%
Mabane Co.	0.751	-0.007	-0.92%	1.75	14.7	1.4%	830	18.1%	-11.9%	11.9%	5.8%
Gulf Bank	0.226	-0.004	-1.74%	0.99	10.3	4.4%	656	6.6%	-25.1%	9.6%	1.0%
Burgan Bank	0.210	0.001	0.48%	0.73	6.5	5.4%	550	6.1%	-30.9%	11.3%	1.2%
Warba Bank	0.252	0.004	1.61%	1.82	24.0	0.0%	397	26.6%	-3.8%	7.6%	0.5%
Shamal Az-Zour Al-Oula Power & Water	0.333	-0.002	-0.60%	4.78	29.8	0.0%	366	4.1%	0.0%	16.1%	2.3%
Human Soft Holding	2.678	-0.005	-0.19%	4.05	9.1	6.9%	326	5.8%	-11.2%	44.6%	30.3%
Qurain Petrochemical Industries	0.282	0.003	1.08%	0.69	10.2	5.4%	288	-1.4%	-9.4%	6.7%	3.6%
Boubyan Petrochemical	0.563	0.000	0.00%	1.27	24.0	9.2%	284	5.2%	-15.6%	5.3%	2.1%
Kuwait Projects Company Holding	0.155	-0.003	-1.90%	0.83	9.4	6.0%	281	4.7%	-27.8%	8.9%	0.3%
National Industries Group Holding	0.176	-0.001	-0.56%	0.66	5.4	6.1%	251	12.8%	-27.0%	12.3%	3.7%
Boursa Kuwait Securities Co	1.176	-0.004	-0.34%	7.36	24.6	0.0%	236	0.0%	0.0%	29.9%	26.5%
Kuwait International Bank	0.194	-0.002	-1.02%	0.70	11.5	5.2%	198	12.8%	-25.7%	6.1%	0.6%
Mezzan Holding	0.621	-0.003	-0.48%	1.79	33.6	2.7%	189	-4.5%	24.2%	5.3%	2.2%
Integrated Holding	0.380	0.000	0.00%	1.22	10.6	10.5%	84	8.6%	-31.0%	11.5%	8.5%
Total		-38.22	-0.61%	1.74	14.51	3.46%	24,151	5.7%	-11.3%	12.01%	1.56%



Premier Market	Price			Moving Average		RSI	MKT Cap	Price Performance		52 Week (KD)	
Description	Close (KD)	Day Δ	Day % Δ	50 Day	200 Day	14 Day	Mn KD	MTD(%)	YTD (%)	High	Low
Premier Index	6,183	-38.22	-0.61%	5,716	5,888	94	24,151	5.7%	-11.3%	7,172	4,499

Top 5 Performrs (Today's Price Change)

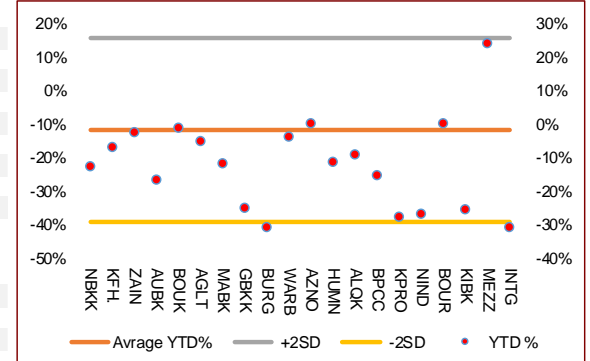
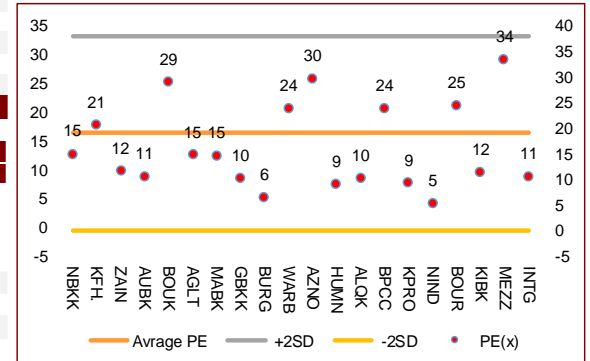
Warba Bank	0.252	0.004	1.61%	0.208	0.220	71	397	26.6%	-3.8%	0.279	0.164
Qurain Petrochemical Industries	0.282	0.003	1.08%	0.283	0.267	52	288	-1.4%	-9.4%	0.323	0.163
Burgan Bank	0.210	0.001	0.48%	0.194	0.231	75	550	6.1%	-30.9%	0.324	0.175
Boubyan Petrochemical	0.563	0.000	0.00%	0.558	0.577	68	284	5.2%	-15.6%	0.800	0.395
Integrated Holding	0.380	0.000	0.00%	0.375	0.450	71	84	8.6%	-31.0%	0.600	0.342

Middle Performrs (Today's Price Change)

Mobile Telecommunications	0.584	-0.001	-0.17%	0.568	0.548	73	2,527	-0.8%	-2.5%	0.604	0.407
Human Soft Holding	2.678	-0.005	-0.19%	2.665	2.802	56	326	5.8%	-11.2%	3.470	1.944
Boursa Kuwait Securities Co	1.176	-0.004	-0.34%	0.195	0.049	79	236	0.0%	0.0%	1.210	0.990
Ahli United Bank BSC	0.243	-0.001	-0.41%	0.213	0.228	73	2,345	4.7%	-16.9%	0.311	0.160
National Bank of Kuwait	0.890	-0.004	-0.45%	0.830	0.850	82	6,044	3.3%	-12.9%	1.062	0.654
Mezzan Holding	0.621	-0.003	-0.48%	0.614	0.555	36	189	-4.5%	24.2%	0.665	0.428
Boubyan Bank	0.601	-0.003	-0.50%	0.561	0.543	76	1,820	4.2%	-1.4%	0.638	0.380
National Industries Group Holding	0.176	-0.001	-0.56%	0.162	0.186	85	251	12.8%	-27.0%	0.247	0.121
Shamal Az-Zour Al-Oula Power & Water	0.333	-0.002	-0.60%	0.192	0.048	60	366	4.1%	0.0%	0.500	0.297
Agility Public Warehousing	0.673	-0.005	-0.74%	0.100	0.100	89	1,288	8.0%	-5.2%	1.210	0.996

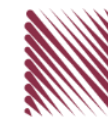
Bottom 5 Performrs (Today's Price Change)

Kuwait Projects Company Holding	0.155	-0.003	-1.90%	0.152	0.178	73	281	4.7%	-27.8%	0.225	0.147
Gulf Bank	0.226	-0.004	-1.74%	0.209	0.238	81	656	6.6%	-25.1%	0.317	0.180
Kuwait Finance House	0.684	-0.009	-1.30%	0.615	0.639	99	5,191	9.4%	-7.1%	0.761	0.473
Kuwait International Bank	0.194	-0.002	-1.02%	0.174	0.205	82	198	12.8%	-25.7%	0.270	0.162
Mabane Co.	0.751	-0.007	-0.92%	0.646	0.684	96	830	18.1%	-11.9%	0.877	0.434



DAILY MARKET COVERAGE REPORT

NIC MENA SECURITIES - RESEARCH AND STUDIES DEP



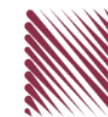
Banking Sector	Price			Valuation Multiples			MKT Cap	Price Performance		Trading Indicators		ROE	ROA	52 Week (KD)	
	Company	Close (KD)	Day Δ	Day % Δ	PBV(X)	PE(X)		DY%	Mn KD	MTD(%)	YTD (%)			Value (Mn KD)	(Mn Shrs)
National Bank of Kuwait	0.890	-0.004	-0.45%	1.76	15.06	3.5%	6,044	3%	-13%	2.99	3.36	11.7%	1.4%	1.062	0.654
Kuwait Finance House	0.684	-0.009	-1.30%	2.52	20.68	2.4%	5,191	9%	-7%	12.00	17.44	12.2%	1.3%	0.761	0.473
Ahli United Bank BSC	0.243	-0.001	-0.41%	1.83	10.70	5.0%	2,345	5%	-17%	1.93	7.90	17.1%	1.8%	0.311	0.160
Boubyan Bank	0.601	-0.003	-0.50%	3.16	29.05	1.1%	1,820	4%	-1%	0.14	0.23	10.9%	1.2%	0.638	0.380
Commercial Bank of Kuwait	0.500	0.000	0.00%	1.32	0.00	3.7%	965	0%	-5%	0.00	0.01	0.0%	0.0%	0.555	0.465
Gulf Bank	0.226	-0.004	-1.74%	0.99	10.31	4.4%	656	7%	-25%	1.75	7.69	9.6%	1.0%	0.317	0.180
Ahli United Bank	0.288	-0.002	-0.69%	1.23	10.21	4.7%	562	11%	-12%	0.28	0.96	12.1%	1.3%	0.330	0.225
Burgan Bank	0.210	0.001	0.48%	0.73	6.50	5.4%	550	6%	-31%	0.78	3.69	11.3%	1.2%	0.324	0.175
Warba Bank	0.252	0.004	1.61%	1.82	24.00	0.0%	397	27%	-4%	2.63	10.39	7.6%	0.5%	0.279	0.164
Al Ahli Bank of Kuwait	0.193	-0.001	-0.52%	0.55	10.81	7.3%	310	13%	-24%	0.49	2.53	5.1%	0.6%	0.307	0.156
Kuwait International Bank	0.194	-0.002	-1.02%	0.70	11.54	5.2%	198	13%	-26%	2.36	12.05	6.1%	0.6%	0.270	0.162
Total Banking Sector - 11 Companies				1.73	15.87	3.3%	19,038			25.34	66.26	10.90%	1.21%		

Basic materials	Price			Valuation Multiples			MKT Cap	Price Performance		Trading Indicators		ROE	ROA	52 Week (KD)	
	Company	Close (KD)	Day Δ	Day % Δ	PBV(X)	PE(X)		DY%	Mn KD	MTD(%)	YTD (%)			Value (Mn KD)	(Mn Shrs)
Qurain Petrochemical Industries	0.282	0.003	1.08%	0.69	10.20	5.4%	288	-1%	-9%	0.21	0.73	6.7%	3.6%	0.323	0.163
Boubyan Petrochemical	0.563	0.000	0.00%	1.27	24.02	9.2%	284	5%	-16%	0.02	0.04	5.3%	2.1%	0.800	0.395
Al Kout Industrial Projects	0.769	0.000	0.00%	2.50	16.21	6.5%	78	0%	-10%	0.00	0.00	15.4%	11.3%	0.850	0.769
Kuwait Foundry	0.255	0.005	2.00%	0.85	20.61	20.9%	18	9%	-22%	0.00	0.01	4.1%	3.8%	0.504	0.192
Total Basic materials - 4 Companies				0.96	14.61	7.6%	668			0.23	0.78	6.57%	5.07%		

Consumer goods	Price			Valuation Multiples			MKT Cap	Price Performance		Trading Indicators		ROE	ROA	52 Week (KD)	
	Company	Close (KD)	Day Δ	Day % Δ	PBV(X)	PE(X)		DY%	Mn KD	MTD(%)	YTD (%)			Value (Mn KD)	(Mn Shrs)
Mezzan Holding	0.621	-0.003	-0.48%	1.79	33.56	2.7%	189	-4%	24%	0.08	0.12	5.3%	2.2%	0.665	0.428
Livestock Transport and Trading	0.184	-0.001	-0.54%	0.96	32.80	0.1%	38	-1%	5%	0.07	0.37	2.9%	2.0%	0.200	0.152
Danah Al Safat Foodstuff	0.012	0.000	0.00%	0.25	(0.30)	0.1%	1	0%	-25%	0.00	0.00	-84.8%	-43.2%	0.029	0.010
Total Basic materials - 3 Companies				1.52	92.74	2.2%	229			0.14	0.49	1.64%	0.90%		

DAILY MARKET COVERAGE REPORT

NIC MENA SECURITIES - RESEARCH AND STUDIES DEP



Consumer services	Price			Valuation Multiples			MKT Cap	Price Performance		Trading Indicators		ROE	ROA	52 Week (KD)	
Company	Close (KD)	Day Δ	Day % Δ	PBV(X)	PE(X)	DY%	Mn KD	MTD(%)	YTD (%)	Value (Mn KD)	(Mn Shrs)	(%)	(%)	High	Low
Jazeera Airways	0.583	0.011	1.92%	2.90	7.80	6.0%	117	4%	-47%	0.16	0.29	37.1%	9.0%	1.110	0.372
Kuwait National Cinema	0.700	0.000	0.00%	0.80	7.57	6.9%	65	4%	-33%	0.02	0.03	10.6%	7.2%	1.050	0.600
Oula Fuel Marketing	0.110	0.000	0.00%	0.66	11.51	5.4%	45	-1%	-13%	0.00	0.04	5.7%	3.2%	0.134	0.095
Al Soor Fuel Marketing	0.114	0.002	1.79%	0.70	13.34	4.3%	46	4%	-9%	0.01	0.08	5.3%	3.7%	0.129	0.096
Sultan Center Food Products	0.055	0.000	0.00%	0.68	13.87	0.0%	31	0%	6%	0.00	0.02	4.9%	0.7%	0.060	0.036
IFA Hotels and Resorts	0.024	0.000	-0.84%	0.85	(0.65)	0.0%	15	-6%	-57%	0.03	1.46	-131.5%	-8.1%	0.062	0.021
Jiyad Holding	0.044	0.003	6.10%	0.39	8.68	0.0%	15	33%	12%	0.10	2.33	4.5%	2.8%	0.047	0.029
Kuwait Resorts	0.054	0.001	1.89%	0.37	9.81	0.0%	10	18%	-7%	0.05	1.02	3.8%	3.2%	0.060	0.038
Alrai Media Group	0.037	0.000	0.00%	0.83	(2.41)	0.0%	9	0%	-2%	0.00	0.00	-34.2%	-20.0%	0.045	0.031
Future Kid Entertainment and Real Estate	0.080	0.000	0.00%	0.46	30.22	14.4%	9	5%	-9%	0.00	0.00	1.5%	0.9%	0.110	0.069
Al Eid Food	0.063	0.003	4.30%	0.42	5.03	0.0%	8	14%	-4%	0.01	0.15	8.4%	6.1%	0.080	0.038
Kuwait Hotels	0.077	-0.001	-0.65%	1.08	(4.42)	0.0%	4	-12%	-23%	0.02	0.23	-24.4%	-13.2%	0.101	0.069
Palms Agro Production	0.065	0.000	0.00%	0.55	(45.82)	15.3%	3	15%	62%	0.00	0.00	-1.2%	-0.9%	0.065	0.025
Kuwait Cable Vision	0.014	0.000	0.00%	0.52	(11.65)	0.0%	1	0%	0%	0.00	0.00	-4.5%	-3.0%	0.026	0.012
Total Consumer services - 14 Companies				0.85	35.75	4.7%	377			0.41	5.65	2.38%	2.72%		

Financial services	Price			Valuation Multiples			MKT Cap	Price Performance		Trading Indicators		ROE	ROA	52 Week (KD)	
Company	Close (KD)	Day Δ	Day % Δ	PBV(X)	PE(X)	DY%	Mn KD	MTD(%)	YTD (%)	Value (Mn KD)	(Mn Shrs)	(%)	(%)	High	Low
Egypt Kuwait Holding	0.365	0.000	0.00%	2.16	12.32	5.4%	374	-2%	-19%	0.00	0.00	17.6%	7.1%	0.500	0.318
Kuwait Projects Company Holding	0.155	-0.003	-1.90%	0.83	9.36	6.0%	281	5%	-28%	0.34	2.19	8.9%	0.3%	0.225	0.147
National Industries Group Holding	0.176	-0.001	-0.56%	0.66	5.42	6.1%	251	13%	-27%	0.38	2.13	12.3%	3.7%	0.247	0.121
Boursa Kuwait Securities Co	1.176	-0.004	-0.34%	7.36	24.62	0.0%	236	0%	0%	1.19	1.00	29.9%	26.5%	1.210	0.990
GFH Financial Group	0.051	0.000	0.59%	0.56	6.99	5.5%	174	2%	-25%	0.06	1.17	8.0%	1.3%	0.074	0.042
National Investments	0.140	-0.002	-1.41%	0.62	10.41	5.8%	112	18%	1%	0.35	2.50	5.9%	5.0%	0.158	0.080
Tamdeen Investment	0.305	0.000	0.00%	0.37	12.65	3.9%	104	22%	-12%	0.01	0.02	3.0%	2.2%	0.400	0.199
Alimtiq Investment Group	0.099	0.000	-0.10%	0.47	5.16	8.0%	102	17%	-21%	0.29	2.92	9.1%	5.2%	0.137	0.071
Commercial Facilities	0.183	-0.003	-1.61%	0.57	7.05	9.2%	93	1%	-14%	0.00	0.03	8.0%	4.2%	0.235	0.179
Aayan Leasing and Investment	0.099	0.002	1.65%	1.16	(5.41)	1.8%	79	65%	109%	2.67	27.10	-21.4%	-4.9%	0.102	0.032
Kuwait Investment	0.130	-0.001	-0.76%	0.57	4.07	7.7%	71	15%	-13%	0.14	1.08	13.9%	6.0%	0.172	0.095
Noor Financial Investment	0.172	0.004	2.38%	1.05	8.41	2.9%	68	6%	45%	0.06	0.38	12.5%	7.5%	0.184	0.076

DAILY MARKET COVERAGE REPORT

NIC MENA SECURITIES - RESEARCH AND STUDIES DEP



Financial services	Price			Valuation Multiples			MKT Cap	Price Performance		Trading Indicators		ROE	ROA	52 Week (KD)	
	Company	Close (KD)	Day Δ	Day % Δ	PBV(X)	PE(X)		DY%	Mn KD	MTD(%)	YTD (%)			Value (Mn KD)	(Mn Shrs)
Arzan Financial Group for Financing and Invest	0.056	0.002	2.75%	0.45	40.71	0.0%	45	-3%	138%	1.05	18.91	1.1%	0.7%	0.064	0.022
Gulf Investment House	0.096	-0.009	-8.48%	1.08	177.76	0.0%	39	6%	54%	0.21	2.16	0.6%	0.5%	0.108	0.038
Kuwait Financial Centre	0.088	0.000	0.23%	0.44	6.06	5.6%	42	9%	-17%	0.14	1.58	7.3%	3.5%	0.121	0.070
Al Bareeq Holding	0.079	0.000	0.00%	0.83	15.80	0.0%	35	-25%	-21%	0.00	0.00	5.2%	5.0%	0.110	0.079
Arabi Group Holdings	0.198	0.000	0.00%	1.07	(19.90)	0.0%	33	0%	-28%	0.00	0.00	-5.4%	-0.6%	0.337	0.081
Kuwait and Middle East Financial Investment	0.110	-0.002	-1.79%	1.79	43.93	0.0%	29	-4%	23%	0.00	0.01	4.1%	3.2%	0.138	0.063
Privatization Holding	0.044	-0.001	-2.65%	0.32	(39.67)	0.0%	27	5%	-11%	0.04	0.96	-0.8%	-0.5%	0.059	0.037
Umm Al Qaiwain General Investment Co	0.072	0.000	0.00%	0.48	13.53	5.1%	26	-19%	8%	0.00	0.00	3.6%	3.3%	0.096	0.052
KAMCO Investment	0.074	0.000	0.00%	0.45	8.30	0.0%	25	6%	-18%	0.13	1.78	5.4%	2.3%	0.111	0.060
Asiya Capital Investments	0.034	0.001	4.36%	0.36	17.27	0.2%	26	8%	-18%	0.04	1.14	2.1%	2.0%	0.041	0.029
Securities House	0.045	0.000	0.45%	0.61	(65.79)	0.0%	25	12%	-1%	0.49	10.78	-0.9%	-0.7%	0.050	0.027
Inovent BSC Public	0.076	-0.002	-3.08%	0.53	10.14	7.8%	22	35%	19%	0.09	1.21	5.2%	2.9%	0.080	0.044
Coast Investment and Development	0.036	0.000	0.00%	0.38	35.88	0.0%	21	6%	-10%	0.00	0.12	1.1%	1.0%	0.045	0.026
First Investment	0.034	0.002	7.03%	0.52	(0.46)	0.0%	22	11%	-3%	0.76	22.27	-113.6%	-62.0%	0.045	0.022
Al Madar Finance and Investment	0.084	-0.002	-1.99%	0.76	12.53	0.0%	17	-2%	-10%	0.11	1.32	6.1%	5.0%	0.148	0.062
Bayan Investment	0.047	0.002	4.44%	0.47	(24.29)	0.0%	17	-2%	23%	0.00	0.00	-1.9%	-0.8%	0.053	0.031
Al Manar Financing and Leasing	0.049	0.000	0.00%	0.45	12.63	1.0%	15	5%	-5%	0.00	0.08	3.5%	2.7%	0.060	0.037
Manazel Holding	0.034	0.000	0.00%	0.75	21.85	0.0%	15	3%	-13%	0.07	2.17	3.4%	0.8%	0.048	0.021
Kuwait Finance and Investment	0.045	0.000	0.00%	0.36	20.21	0.0%	14	0%	-9%	0.00	0.00	1.8%	1.2%	0.058	0.038
National International Holding	0.063	0.002	3.28%	0.33	7.58	4.7%	13	4%	-14%	0.02	0.29	4.4%	3.3%	0.081	0.051
Osoul Investment	0.081	-0.001	-0.86%	0.61	6.79	0.0%	12	-4%	8%	0.02	0.29	9.0%	8.2%	0.121	0.070
UniCap Investment and Finance	0.047	0.000	0.00%	0.48	(23.68)	0.0%	11	27%	-14%	0.01	0.17	-2.0%	-1.0%	0.057	0.035
Amar Finance and Leasing	0.056	0.000	0.00%	0.63	46.88	0.0%	11	9%	47%	0.00	0.00	1.3%	1.2%	0.064	0.037
Gulf North Africa Holding	0.059	-0.001	-1.68%	0.78	75.37	0.0%	9	5%	-6%	0.00	0.05	1.0%	0.6%	0.062	0.052
International Financial Advisors	0.031	0.000	0.00%	0.93	(0.42)	2.1%	8	0%	-42%	0.00	0.00	-222.8%	-19.3%	0.060	0.027
Al Salam Group Holding	0.029	0.000	0.35%	0.25	215.16	0.0%	8	23%	-3%	0.17	6.11	0.1%	0.1%	0.033	0.018
Amwal International Investment	0.036	0.000	0.00%	0.66	13.16	0.0%	6	-1%	19%	0.00	0.00	5.0%	2.6%	0.050	0.030
Al Madina for Finance and Investment	0.013	0.000	0.00%	0.44	(2.44)	0.0%	5	21%	-13%	0.04	2.99	-17.9%	-7.7%	0.019	0.009
Credit Rating and Collection	0.032	0.002	5.00%	0.97	(21.20)	0.0%	5	-11%	58%	0.00	0.00	-4.6%	-4.3%	0.035	0.019
Ekttitab Holding	0.016	0.001	4.03%	0.37	(10.91)	0.0%	5	21%	3%	0.00	0.26	-3.4%	-3.0%	0.017	0.010
Warba Capital Holding	0.045	-0.001	-2.79%	0.50	(7.20)	0.0%	5	-9%	-30%	0.00	0.06	-7.0%	-6.2%	0.071	0.042
Kuwait Syrian Holding Co	0.027	0.002	5.88%	0.23	(13.79)	0.0%	5	2%	-14%	0.00	0.17	-1.7%	-1.1%	0.043	0.022
National Consumer Holding	0.046	-0.002	-5.00%	0.51	224.34	0.0%	4	-17%	-17%	0.00	0.01	0.2%	0.2%	0.100	0.010
Al Deera Holding	0.016	0.000	0.00%	0.70	(9.02)	0.0%	3	0%	-20%	0.00	0.00	-7.7%	-1.7%	0.022	0.011
Al Mal Investment Company	0.009	0.000	-1.09%	0.40	(0.85)	0.0%	3	1%	-8%	0.02	1.65	-47.6%	-23.3%	0.016	0.008
Gulf Franchising Holding	0.048	0.000	0.21%	0.75	(2.08)	0.0%	2	-18%	-36%	0.00	0.00	-36.2%	-10.8%	0.160	0.001
Tamkeen Holding	0.005	0.000	0.00%	0.05	(7.18)	0.0%	0	0%	0%	0.00	0.00	-0.7%	-0.7%	0.005	0.005
Total Financial services - 49 Companies				0.73	16.54	4.1%	2,554			8.95	117.07	4.42%	4.14%		

DAILY MARKET COVERAGE REPORT

NIC MENA SECURITIES - RESEARCH AND STUDIES DEP



Health care	Price			Valuation Multiples			MKT Cap	Price Performance		Trading Indicators		ROE	ROA	52 Week (KD)	
Company	Close (KD)	Day Δ	Day % Δ	PBV(X)	PE(X)	DY%	Mn KD	MTD(%)	YTD (%)	Value (Mn KD)	(Mn Shrs)	(%)	(%)	High	Low
Al-Maidan Clinic for Oral Health Services	1.220	0.000	0.00%	7.90	47.78	0.6%	305	0%	0%	0.00	0.00	16.5%	10.9%	1.240	1.220
Advanced Technology	0.597	0.000	0.00%	1.55	48.60	2.5%	90	-5%	-26%	0.00	0.00	3.2%	0.7%	0.900	0.580
Yiaco Medical	0.707	0.000	0.00%	6.06	52.72	0.0%	12	0%	0%	0.00	0.00	11.5%	0.6%	0.707	0.707
Total Health care - 3 Companies				4.14	48.09	1.0%	407			0.00	0.00	8.61%	4.68%		

Industrials	Price			Valuation Multiples			MKT Cap	Price Performance		Trading Indicators		ROE	ROA	52 Week (KD)	
Company	Close (KD)	Day Δ	Day % Δ	PBV(X)	PE(X)	DY%	Mn KD	MTD(%)	YTD (%)	Value (Mn KD)	(Mn Shrs)	(%)	(%)	High	Low
Agility Public Warehousing	0.673	-0.005	-0.74%	1.17	14.84	2.7%	1,288	8%	-5%	1.10	1.62	7.9%	4.2%	0.748	0.357
Human Soft Holding	2.678	-0.005	-0.19%	4.05	9.08	6.9%	326	6%	-11%	0.15	0.06	44.6%	30.3%	3.470	1.944
ALAFCO Aviation Lease and Finance	0.167	-0.001	-0.60%	0.50	8.98	6.0%	159	6%	-39%	0.25	1.52	5.5%	1.4%	0.278	0.138
Gulf Cable and Electrical Industries	0.720	-0.009	-1.23%	0.87	35.71	3.8%	151	12%	48%	0.58	0.80	2.4%	2.2%	0.742	0.390
Kuwait Cement	0.205	-0.002	-0.97%	0.70	36.38	7.2%	146	18%	-17%	0.06	0.29	1.9%	1.3%	0.270	0.144
Integrated Holding	0.380	0.000	0.00%	1.22	10.58	10.5%	84	9%	-31%	0.02	0.06	11.5%	8.5%	0.600	0.342
Kuwait Portland Cement	0.766	-0.001	-0.13%	1.03	10.12	12.8%	77	5%	-22%	0.01	0.01	10.2%	8.2%	1.170	0.683
Educational Holding Group	0.309	0.000	0.00%	1.79	9.78	4.8%	76	3%	-30%	0.00	0.00	18.3%	16.7%	0.475	0.228
United Projects for Aviation Services	0.465	0.000	0.00%	0.98	7.96	4.5%	74	0%	-9%	0.00	0.00	12.3%	7.8%	0.512	0.367
Heavy Engineering Industries and Shipbuilding	0.374	-0.001	-0.27%	1.08	6.01	7.8%	67	2%	-8%	0.09	0.24	18.0%	5.9%	0.419	0.298
National Industries	0.151	-0.003	-1.95%	0.63	12.31	6.5%	53	-8%	-8%	0.00	0.03	5.1%	3.8%	0.173	0.143
Kuwait Company for Process Plant Constructi	0.309	0.000	0.00%	1.22	6.62	5.8%	33	-1%	28%	0.03	0.10	18.5%	7.7%	0.337	0.175
ACICO Industries	0.101	0.002	2.02%	0.32	13.15	4.9%	33	7%	-24%	0.00	0.02	2.5%	0.6%	0.139	0.081
Ras Al Khaimah for White Cement and Constr	0.065	0.000	0.00%	0.51	19.94	8.4%	33	0%	0%	0.00	0.00	2.6%	2.0%	0.080	0.055
Combined Group Contracting	0.172	-0.001	-0.58%	0.60	7.75	11.9%	28	10%	-31%	0.17	0.96	7.7%	1.2%	0.251	0.138
Gulf Cement	0.033	0.000	0.00%	0.33	(12.07)	12.5%	27	18%	-36%	0.00	0.06	-2.7%	-2.2%	0.060	0.029
Sharjah Cement and Industrial Development	0.042	0.000	0.00%	0.21	25.32	12.4%	26	0%	0%	0.00	0.00	0.8%	0.6%	0.064	0.042
KGL Logistics	0.029	0.002	5.47%	0.22	4.70	0.1%	22	16%	-23%	0.33	11.35	4.6%	2.9%	0.043	0.023
Shuaiba Industrial	0.130	0.000	0.00%	0.72	40.15	7.6%	13	5%	-16%	0.00	0.00	1.8%	1.4%	0.180	0.122
Kuwait and Gulf Link Transport	0.051	0.004	9.48%	0.21	15.36	0.0%	14	13%	-23%	0.38	7.64	1.4%	0.4%	0.077	0.042
Fujairah Cement Industries	0.036	0.000	0.00%	0.15	17.22	11.8%	13	13%	-21%	0.00	0.00	0.8%	0.4%	0.052	0.029
National Cleaning	0.057	0.001	0.88%	0.34	7.68	8.8%	12	10%	-17%	0.12	2.05	4.4%	1.5%	0.088	0.047
Hilal Cement	0.114	0.000	0.00%	0.99	(9.37)	13.2%	12	-1%	14%	0.00	0.00	-10.6%	-6.2%	0.126	0.063
Mubarrad Holding	0.064	0.000	-0.62%	0.51	10.29	7.3%	10	15%	-27%	0.08	1.23	4.9%	4.1%	0.089	0.049
Specialities Group Holding	0.065	0.000	-0.15%	0.35	7.71	0.0%	10	8%	-15%	0.00	0.07	4.5%	3.5%	0.078	0.050
National Ranges	0.015	0.000	1.39%	0.27	(1.07)	0.0%	4	-9%	46%	0.06	4.16	-24.9%	-5.3%	0.018	0.007
Metal and Recycling	0.043	0.002	4.41%	0.36	(1.81)	0.0%	4	-2%	-15%	0.00	0.01	-19.7%	-10.1%	0.070	0.020
Salbookh Trading	0.036	0.001	1.98%	0.49	(2.10)	0.0%	4	31%	-28%	0.00	0.14	-23.2%	-15.9%	0.051	0.026
Equipment Holding	0.016	0.000	-2.47%	0.32	(182.45)	0.0%	2	7%	-28%	0.00	0.30	-0.2%	-0.1%	0.024	0.013
Total Industrials - 29 Companies				0.89	13.34	5.0%	2,800			3.45	32.72	6.67%	5.05%		

DAILY MARKET COVERAGE REPORT

NIC MENA SECURITIES - RESEARCH AND STUDIES DEP



Insurance	Price			Valuation Multiples			MKT Cap	Price Performance		Trading Indicators		ROE	ROA	52 Week (KD)	
Company	Close (KD)	Day Δ	Day % Δ	PBV(X)	PE(X)	DY%	Mn KD	MTD(%)	YTD (%)	Value (Mn KD)	(Mn Shrs)	(%)	(%)	High	Low
Gulf Insurance Group	0.655	0.005	0.77%	1.12	9.14	5.7%	122	7%	-1%	0.00	0.00	12.3%	1.7%	0.680	0.550
Al Ahleia Insurance	0.408	0.002	0.49%	0.77	8.22	8.2%	84	7%	0%	0.00	0.01	9.4%	3.3%	0.445	0.367
Kuwait Insurance	0.360	0.000	0.00%	0.59	6.97	6.6%	67	3%	9%	0.00	0.00	8.5%	4.6%	0.387	0.300
Kuwait Reinsurance	0.218	0.003	1.40%	0.83	9.33	2.0%	44	12%	58%	0.00	0.00	8.9%	3.2%	0.215	0.126
Bahrain Kuwait Insurance	0.200	0.000	0.00%	0.93	12.87	6.1%	28	0%	0%	0.00	0.00	7.2%	1.1%	0.200	0.200
Warba Insurance	0.075	-0.004	-4.46%	0.33	10.65	0.0%	12	-5%	24%	0.00	0.06	3.1%	1.0%	0.094	0.051
First Takaful Insurance	0.040	0.000	0.00%	0.48	5.03	0.0%	4	-1%	4%	0.00	0.00	9.6%	5.9%	0.056	0.031
Wethaq Takaful Insurance	0.023	0.000	-1.74%	0.21	(28.60)	0.0%	2	-5%	-10%	0.01	0.58	-0.7%	-0.7%	0.035	0.018
Total Insurance - 8 Companies				0.77	8.68	5.7%	364			0.02	0.65	8.86%	3.00%		

Oil and Gas	Price			Valuation Multiples			MKT Cap	Price Performance		Trading Indicators		ROE	ROA	52 Week (KD)	
Company	Close (KD)	Day Δ	Day % Δ	PBV(X)	PE(X)	DY%	Mn KD	MTD(%)	YTD (%)	Value (Mn KD)	(Mn Shrs)	(%)	(%)	High	Low
National Petroleum Services	1.100	0.000	0.00%	2.62	9.38	6.4%	107	10%	-6%	0.00	0.00	27.9%	23.6%	1.389	0.903
Independent Petroleum Group	0.430	0.000	0.00%	0.79	11.72	7.0%	78	-4%	-11%	0.00	0.00	6.8%	2.2%	0.497	0.375
Burgan for Well Drilling Trading and Maintenanc	0.082	-0.001	-0.85%	0.30	8.33	0.0%	19	19%	2%	0.00	0.02	3.6%	1.1%	0.098	0.060
Energy House Holding	0.020	0.000	0.00%	0.63	(2.80)	0.0%	15	3%	-11%	0.00	0.13	-22.5%	-17.0%	0.036	0.014
Gulf Petroleum Investment	0.019	0.000	0.52%	0.22	(6.25)	0.0%	9	1%	-3%	0.11	5.93	-3.4%	-2.3%	0.023	0.012
Senergy Holding	0.019	0.001	3.28%	0.38	(0.79)	0.0%	4	17%	-14%	0.01	0.71	-47.9%	-30.4%	0.027	0.014
Total Oil and Gas - 6 Companies				0.83	26.84	5.3%	231			0.13	6.79	3.10%	2.18%		

Real estate	Price			Valuation Multiples			MKT Cap	Price Performance		Trading Indicators		ROE	ROA	52 Week (KD)	
Company	Close (KD)	Day Δ	Day % Δ	PBV(X)	PE(X)	DY%	Mn KD	MTD(%)	YTD (%)	Value (Mn KD)	(Mn Shrs)	(%)	(%)	High	Low
Mabane Co.	0.751	-0.007	-0.92%	1.75	14.71	1.4%	830	18%	-12%	0.35	0.47	11.9%	5.8%	0.877	0.434
Salhia Real Estate	0.402	-0.001	-0.25%	1.22	9.24	5.0%	199	2%	-4%	0.11	0.27	13.2%	5.8%	0.460	0.328
Commercial Real Estate	0.103	0.000	0.00%	0.63	12.76	5.6%	186	10%	12%	0.03	0.26	5.0%	2.7%	0.111	0.083
National Real Estate	0.076	0.000	0.26%	0.42	9.96	0.0%	114	8%	-13%	0.09	1.17	4.2%	2.4%	0.090	0.058
Tamdeen Real Estate	0.289	0.024	9.06%	0.42	14.10	3.5%	116	16%	-10%	0.12	0.45	3.0%	2.2%	0.343	0.241
Kuwait Real Estate	0.098	0.001	0.82%	0.69	12.44	0.4%	88	5%	-7%	0.04	0.46	5.5%	2.2%	0.115	0.070
United Real Estate	0.050	-0.001	-0.99%	0.29	(7.44)	0.0%	54	0%	-18%	0.00	0.08	-3.9%	-1.2%	0.063	0.045
First Dubai for Real Estate Development	0.043	0.001	1.90%	0.58	46.94	0.9%	43	11%	19%	0.10	2.38	1.2%	1.0%	0.055	0.027
Al Mazaya Holding	0.054	0.001	1.12%	0.43	(3.89)	0.1%	34	7%	-8%	0.05	0.86	-11.0%	-3.8%	0.067	0.047
Ajial Real Estate Entertainment	0.142	0.000	0.00%	0.22	13.72	0.0%	27	8%	-18%	0.00	0.02	1.6%	1.4%	0.213	0.115
Injazzat Real Estate Development	0.079	0.000	0.00%	0.51	(3.79)	8.7%	26	7%	-1%	0.00	0.00	-13.4%	-7.0%	0.091	0.061

DAILY MARKET COVERAGE REPORT

NIC MENA SECURITIES - RESEARCH AND STUDIES DEP



Real estate Company	Price			Valuation Multiples			MKT Cap	Price Performance		Trading Indicators		ROE	ROA	52 Week (KD)	
	Close (KD)	Day Δ	Day % Δ	PBV(X)	PE(X)	DY%	Mn KD	MTD(%)	YTD (%)	Value (Mn KD)	(Mn Shrs)	(%)	(%)	High	Low
Aayan Real Estate	0.062	0.001	0.82%	0.36	12.04	7.8%	25	20%	-16%	0.03	0.44	3.0%	1.9%	0.080	0.048
Al Argan International Real Estate	0.093	0.000	0.00%	0.27	30.01	5.3%	24	6%	-12%	0.00	0.00	0.9%	0.3%	0.135	0.060
Munshaat Real Estate Projects	0.071	0.001	1.14%	0.48	26.17	3.0%	23	42%	-4%	0.00	0.06	1.8%	0.7%	0.090	0.045
Al-Enmaa Real Estate	0.051	0.001	1.20%	0.51	13.35	0.0%	23	16%	-19%	0.06	1.24	3.8%	2.4%	0.079	0.037
Ream Real Estate	0.204	0.000	0.00%	1.56	(8.21)	1.1%	22	0%	132%	0.00	0.00	-19.0%	-10.1%	0.204	0.060
Arkan Al Kuwait Real Estate	0.082	-0.004	-4.68%	0.58	8.83	9.6%	20	-2%	-8%	0.00	0.02	6.6%	3.5%	0.100	0.076
Kuwait Business Town Real Estate	0.031	0.000	0.32%	0.29	7.97	0.2%	20	31%	-29%	0.04	1.23	3.6%	2.7%	0.046	0.022
Dalqan Real Estate	0.318	0.000	0.00%	2.91	58.98	0.0%	19	0%	0%	0.00	0.00	4.9%	4.9%	0.318	0.318
Sokouk Holding	0.030	0.000	-1.32%	0.37	(5.01)	0.0%	17	29%	-15%	0.33	10.94	-7.4%	-4.7%	0.040	0.022
Tijara and Realestate Investment	0.041	0.000	0.00%	0.38	10.76	4.8%	15	-3%	-18%	0.00	0.00	3.6%	1.9%	0.055	0.034
Al-Arabiya Real Estate	0.029	0.001	5.09%	0.25	8.76	2.2%	15	27%	-1%	0.73	25.70	2.9%	1.1%	0.033	0.020
Aqar Real Estate Investments	0.062	0.002	3.50%	0.45	5.18	8.0%	13	-4%	-22%	0.00	0.03	8.7%	7.3%	0.089	0.058
Mashaer Holding	0.062	-0.002	-2.67%	0.47	6.66	0.0%	11	14%	-20%	0.11	1.68	7.1%	5.0%	0.086	0.048
Investors Holding Group	0.018	0.000	0.00%	0.90	(0.84)	0.0%	11	34%	124%	0.53	29.34	-106.5%	-57.2%	0.032	0.007
Dar Al Thuraya Real Estate	0.064	-0.007	-9.55%	0.61	16.98	0.0%	9	-50%	-8%	0.00	0.04	3.6%	3.6%	0.190	0.040
Osos Holding Group	0.090	0.000	0.00%	0.72	6.78	10.5%	9	-5%	-10%	0.00	0.00	10.5%	7.0%	0.118	0.083
Al Massaleh Real Estate	0.039	0.000	0.52%	0.43	(5.37)	0.0%	9	32%	4%	0.00	0.02	-8.1%	-1.9%	0.040	0.026
Abyaar Real Estate Development	0.007	0.000	0.00%	0.21	(0.51)	0.0%	8	0%	-6%	0.00	0.00	-40.9%	-12.4%	0.013	0.005
Kuwait Remal Real Estate	0.021	-0.001	-4.59%	0.31	(2.86)	0.0%	6	43%	-15%	0.02	0.77	-11.0%	-3.9%	0.027	0.013
Kuwait Real Estate Holding	0.026	0.000	-0.76%	0.04	0.69	6.8%	5	2%	-9%	0.00	0.08	5.5%	2.2%	0.034	0.022
Taameer Real Estate Investment	0.019	-0.001	-3.54%	0.28	(4.04)	0.0%	4	4%	-26%	0.02	1.06	-7.0%	-4.5%	0.034	0.013
Sanam Real Estate	0.033	0.000	0.00%	0.42	44.69	0.0%	4	10%	-17%	0.00	0.00	0.9%	0.9%	0.043	0.027
Real Estate Trade Centers	0.029	-0.002	-4.85%	0.16	167.98	0.0%	4	16%	27%	0.00	0.08	0.1%	0.1%	0.050	0.018
Mena Real Estate	0.030	0.000	1.03%	0.20	(65.75)	0.0%	4	20%	-29%	0.09	3.23	-0.3%	-0.2%	0.043	0.021
Al Masaken International Real Estate Developi	0.036	0.000	0.00%	0.40	43.60	0.5%	4	15%	-18%	0.00	0.00	0.9%	0.4%	0.074	0.026
Ajwan Gulf Real Estate	0.011	0.000	0.00%	0.19	(7.68)	0.0%	2	0%	-29%	0.00	0.00	-2.5%	-2.2%	0.016	0.009
Effect Real Estate	0.021	0.000	0.00%	0.29	(8.85)	4.9%	2	0%	0%	0.00	0.00	-3.3%	-3.2%	0.021	0.021
Al Mudon International Real Estate	0.016	0.000	0.00%	0.12	(8.22)	0.0%	2	0%	-35%	0.00	0.00	-1.5%	-1.4%	0.029	0.015
Total Real estate - 39 Companies				0.67	23.98	2.4%	2,048			2.87	82.40	2.79%	2.96%		

DAILY MARKET COVERAGE REPORT

NIC MENA SECURITIES - RESEARCH AND STUDIES DEP



Technology	Price			Valuation Multiples			MKT Cap	Price Performance		Trading Indicators		ROE	ROA	52 Week (KD)	
Company	Close (KD)	Day Δ	Day % Δ	PBV(X)	PE(X)	DY%	Mn KD	MTD(%)	YTD (%)	Value (Mn KD)	(Mn Shrs)	(%)	(%)	High	Low
Automated Systems	0.073	-0.001	-1.35%	0.57	(70.81)	5.5%	7	8%	4%	0.02	0.21	-0.8%	-0.7%	0.087	0.051
Total Technology - 1 Companies				0.57	(70.81)	5.5%	7			0.02	0.21	-0.81%	-0.73%		

Telecom	Price			Valuation Multiples			MKT Cap	Price Performance		Trading Indicators		ROE	ROA	52 Week (KD)	
Company	Close (KD)	Day Δ	Day % Δ	PBV(X)	PE(X)	DY%	Mn KD	MTD(%)	YTD (%)	Value (Mn KD)	(Mn Shrs)	(%)	(%)	High	Low
Mobile Telecommunications	0.584	-0.001	-0.17%	1.95	11.65	5.3%	2,527	-1%	-2%	1.84	3.14	16.7%	4.6%	0.604	0.407
Kuwait Telecommunications	0.840	0.000	0.00%	1.95	9.62	4.2%	419	-1%	7%	0.01	0.01	20.2%	11.1%	0.870	0.680
National Mobile Telecommunications	0.619	0.001	0.16%	0.54	10.30	10.4%	310	7%	-25%	0.09	0.14	5.3%	2.4%	0.835	0.550
AAN Digital Services	0.013	0.001	5.00%	0.37	41.10	0.0%	11	20%	-7%	0.22	17.57	0.9%	0.7%	0.021	0.009
Hayat Communications	0.059	-0.002	-3.62%	0.50	24.83	0.0%	5	-29%	-22%	0.00	0.01	2.0%	0.8%	0.098	0.030
Telecom - 5 Companies				1.54	11.24	5.6%	3,273			2.15	20.88	13.70%	7.86%		

Utilities	Price			Valuation Multiples			MKT Cap	Price Performance		Trading Indicators		ROE	ROA	52 Week (KD)	
Company	Close (KD)	Day Δ	Day % Δ	PBV(X)	PE(X)	DY%	Mn KD	MTD(%)	YTD (%)	Value (Mn KD)	(Mn Shrs)	(%)	(%)	High	Low
Shamal Az-Zour Al-Oula Power & Water	0.333	-0.002	-0.60%	4.78	29.78	0.0%	366	4%	0%	1.61	4.83	16.1%	2.3%	0.500	0.297
Total Utilities - 1 Companies				4.78	29.78	0.0%	366			1.61	4.83	16.06%	2.26%		

Total Market 173 Companies				1.29	15.63	3.76%	32,362			45.34	338.73	8.26%	2.76%		
-----------------------------------	--	--	--	-------------	--------------	--------------	---------------	--	--	--------------	---------------	--------------	--------------	--	--

End of Report

The information contained in this document is proprietary to NIC and is for use only by the persons to whom it is issued. This document is confidential and may not be distributed either in part or in whole without the express agreement of NIC. It is intended solely for the use of the individual or entity to whom it is addressed and others authorized to receive it.



شركة الاستثمار الوطنية
NATIONAL INVESTMENTS COMPANY

Sharq, Al Mutanabi Street, Khaleejia Tower | P.O. Box 25667, Safat 13117, Kuwait

T.: +965 2226 6666 | Fax: +965 2226 6793 | www.nic.com.kw