



شركة الاستثمارات الوطنية
NATIONAL INVESTMENTS COMPANY

Bursa Kuwait – Daily Market Report
MENA Securities – Research & Studies Dep.

Tuesday, October 27, 2020

DAILY MARKET COVERAGE REPORT

NIC MENA SECURITIES - RESEARCH AND STUDIES DEP



Index	Close	DTD Chg Net	DTD (%)	YTD (%)	52W High	52W Low	MKT CAP Bn (KD)	PBV (X)	PE (X)	DY (%)
All Share Index	5,426.94	-41.94	-0.77%	-13.6%	6,416.43	4,339.58	31.45	1.25	15.19	3.87%
Premier Index	5,979.24	-57.39	-0.95%	-14.3%	7,172.32	4,498.65	23.35	1.69	14.03	3.58%
Main Index	4,333.87	-10.11	-0.23%	-11.7%	4,932.47	3,965.63	8.10	0.72	19.91	4.71%
NIC 50 Index	6,648.04	-58.15	-0.87%	-10.9%	7,517.86	5,014.61	26.94	1.48	14.66	3.70%

Index	Value Mn(KD)	Volume (Mn share)
All Share Index	61.97	230.29
Premier Index	55.73	134.02
Main Index	6.23	96.27
NIC 50 Index	60.52	178.03

Market Breadth	UP ↑	Down ↓	No Chg ↔
All Share Index	34	75	64
Premier Index	1	18	1
Main Index	33	57	63
NIC 50 Index	6	37	7

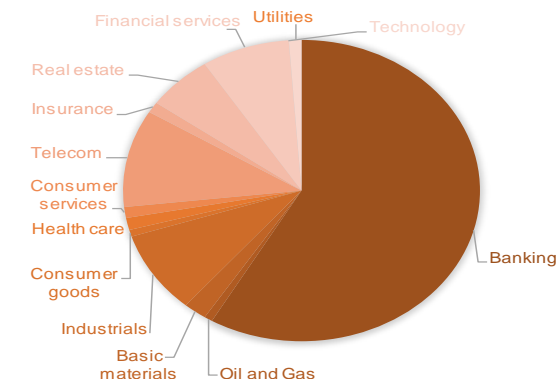
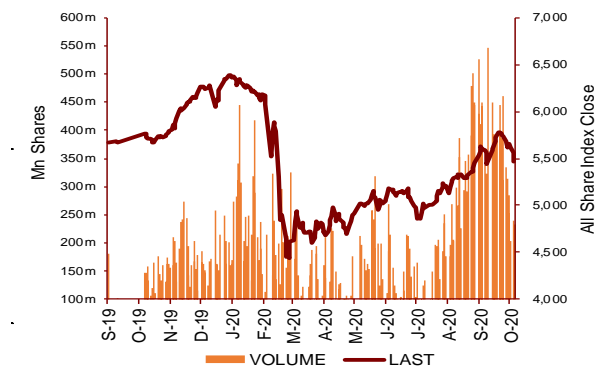
Today's Top 5 Gainer %	Close KD	Value KD	DTD (%)
National Ranges	0.021	278,628	21.64%
Al Eid Food	0.085	53,030	7.59%
Taameer Real Estate Investment	0.021	62,738	7.14%
Al Mal Investment Company	0.008	30,042	5.00%
Fujairah Cement Industries	0.037	1,835	4.83%

Today's Top 5 Loser %	Close KD	Value KD	DTD (%)
Alrai Media Group	0.047	47,309	-36.88%
Gulf Franchising Holding	0.045	8	-9.42%
Automated Systems	0.064	4,558	-9.29%
IFA Hotels and Resorts	0.020	31,831	-9.17%
Kuwait Hotels	0.055	1,104	-8.33%

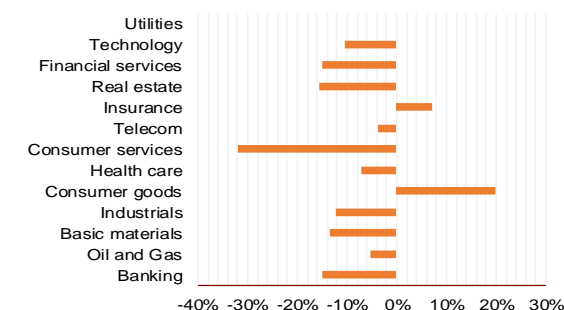
Today's Top 5 by Value	Close KD	Trade Val Mn(KD)	DTD (%)
Kuwait Finance House	0.659	13.72	-0.45%
National Bank of Kuwait	0.840	12.65	-1.06%
Ahli United Bank BSC	0.234	8.23	0.43%
Mobile Telecommunications	0.587	4.40	-1.68%
Kuwait International Bank	0.205	2.85	-1.44%

Top 5 by Volume	Close KD	Trade Vol Mn(Shrs)	DTD (%)
Ahli United Bank BSC	0.234	35.21	0.43%
Kuwait Finance House	0.659	20.67	-0.45%
National Bank of Kuwait	0.840	14.90	-1.06%
Kuwait International Bank	0.205	13.72	-1.44%
National Ranges	0.021	13.62	21.64%

Sector	Close	DTD Chg Net	DTD (%)	YTD (%)	52W High	52W Low	MKT CAP Bn (KD)	PBV (X)	PE (X)	DY (%)
Banking	1,259.85	-9.210	-0.73%	-15.0%	1,536.8	986.4	18.36	1.67	15.30	3.4%
Oil and Gas	1,173.25	3.620	0.31%	-5.2%	1,372.2	985.7	0.24	0.85	27.46	5.2%
Basic materials	785.64	-13.310	-1.67%	-13.5%	973.0	561.7	0.66	0.95	14.44	7.7%
Industrials	814.81	-6.290	-0.77%	-12.2%	937.5	602.9	2.78	0.88	13.25	5.0%
Consumer goods	764.61	2.800	0.37%	20.0%	810.7	548.6	0.23	1.52	92.67	2.2%
Health care	821.04	0.000	0.00%	-7.2%	884.6	815.0	0.41	4.15	48.14	1.0%
Consumer services	730.30	-9.920	-1.34%	-31.9%	1,083.1	674.8	0.37	0.83	35.00	4.8%
Telecom	1,074.81	-13.040	-1.20%	-3.8%	1,134.2	802.2	3.29	1.55	11.31	5.6%
Insurance	1,021.49	11.370	1.13%	7.1%	1,068.3	901.0	0.36	0.77	8.67	5.7%
Real estate	894.05	-8.910	-0.99%	-15.5%	1,083.4	763.2	1.88	0.62	22.02	2.6%
Financial services	919.84	-5.600	-0.61%	-14.9%	1,097.0	801.4	2.51	0.72	16.26	4.2%
Technology	461.96	-47.290	-9.29%	-10.3%	632.9	371.0	0.01	0.50	-61.59	6.3%
Utilities	850.00	-5.260	-0.62%	0.0%	1,042.1	781.6	0.36	4.64	28.88	0.0%
	5,426.94	-41.94	-0.77%	-13.6%	6,416.4	4,339.6	31.45	1.25	15.19	3.87%



YTD Sector Performance %



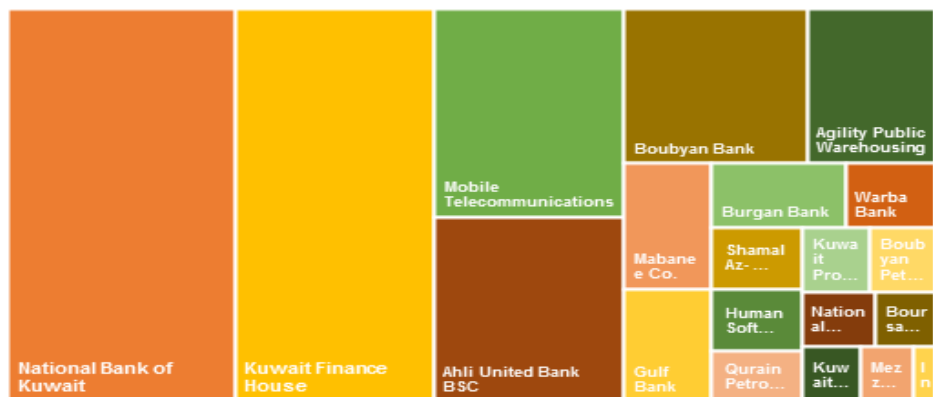
DAILY MARKET COVERAGE REPORT

NIC MENA SECURITIES - RESEARCH AND STUDIES DEP

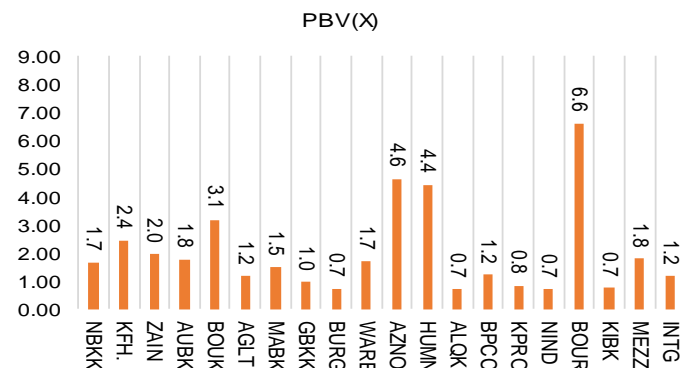


Premier Market	Price			Valuation Multiples			MKT Cap	Price Performance		Trading Indicators		ROE	ROA	52 Week (KD)		MKT Cap
	Close (KD)	Day Δ	Day % Δ	PBV(X)	PE(X)	DY%	Mn KD	MTD(%)	YTD (%)	Value (Mn KD)	(Mn Shrs)	(%)	(%)	High	Low	%
National Bank of Kuwait	0.840	-0.009	-1.06%	1.66	14.22	3.8%	5,705	-3%	-17%	12.65	14.90	11.7%	1.4%	1.062	0.654	24.43%
Kuwait Finance House	0.659	-0.003	-0.45%	2.43	19.92	2.5%	5,001	0%	-11%	13.72	20.67	12.2%	1.3%	0.761	0.473	21.42%
Mobile Telecommunications	0.587	-0.010	-1.68%	1.96	11.71	5.3%	2,540	3%	-2%	4.40	7.41	16.7%	4.6%	0.629	0.407	10.88%
Ahli United Bank BSC	0.234	0.001	0.43%	1.76	10.31	5.2%	2,259	-1%	-21%	8.23	35.21	17.1%	1.8%	0.311	0.160	9.67%
Boubyan Bank	0.598	-0.009	-1.48%	3.15	28.90	1.1%	1,811	1%	-2%	1.81	3.01	10.9%	1.2%	0.642	0.380	7.75%
Agility Public Warehousing	0.665	-0.003	-0.45%	1.16	14.67	2.7%	1,273	0%	-7%	1.78	2.68	7.9%	4.2%	0.748	0.357	5.45%
Mabane Co.	0.642	-0.015	-2.28%	1.50	12.58	1.6%	709	-12%	-25%	2.12	3.25	11.9%	5.8%	0.877	0.434	3.04%
Gulf Bank	0.219	-0.007	-3.10%	0.96	9.99	4.6%	636	0%	-27%	2.17	9.72	9.6%	1.0%	0.317	0.180	2.72%
Burgan Bank	0.207	-0.001	-0.48%	0.72	6.41	5.5%	542	2%	-32%	0.31	1.47	11.3%	1.2%	0.324	0.175	2.32%
Warba Bank	0.234	-0.002	-0.85%	1.69	22.29	0.0%	369	-6%	-10%	1.57	6.64	7.6%	0.5%	0.279	0.164	1.58%
Shamal Az-Zour Al-Oula Power & Water	0.323	-0.002	-0.62%	4.64	28.88	0.0%	355	2%	0%	0.77	2.37	16.1%	2.3%	0.500	0.297	1.52%
Human Soft Holding	2.920	-0.010	-0.34%	4.42	9.90	6.3%	355	12%	-3%	0.50	0.17	44.6%	30.3%	3.470	1.944	1.52%
Qurain Petrochemical Industries	0.291	-0.007	-2.35%	0.71	10.53	5.3%	297	6%	-6%	0.35	1.20	6.7%	3.6%	0.323	0.163	1.27%
Boubyan Petrochemical	0.538	-0.008	-1.47%	1.21	22.95	9.6%	271	-1%	-18%	0.23	0.43	5.3%	2.1%	0.760	0.395	1.16%
Kuwait Projects Company Holding	0.155	-0.002	-1.27%	0.83	9.36	6.0%	281	4%	-27%	0.18	1.13	8.9%	0.3%	0.223	0.147	1.20%
National Industries Group Holding	0.182	-0.005	-2.67%	0.69	5.61	5.9%	260	10%	-24%	1.74	9.37	12.3%	3.7%	0.247	0.121	1.11%
Boursa Kuwait Securities Co	1.056	-0.004	-0.38%	6.60	22.10	0.0%	212	-7%	0%	0.11	0.11	29.9%	26.5%	1.210	0.990	0.91%
Kuwait International Bank	0.205	-0.003	-1.44%	0.74	12.19	4.9%	209	11%	-21%	2.85	13.72	6.1%	0.6%	0.270	0.162	0.90%
Mezzan Holding	0.617	0.000	0.00%	1.78	33.34	2.7%	188	-1%	23%	0.05	0.09	5.3%	2.2%	0.665	0.428	0.80%
Integrated Holding	0.366	-0.008	-2.14%	1.17	10.19	10.9%	81	4%	-32%	0.17	0.47	11.5%	8.5%	0.600	0.342	0.34%
Total		-57.39	-0.95%	1.69	14.03	3.58%	23,353	-0.7%	-14.3%	55.73	134.02	12.01%	1.56%			100%

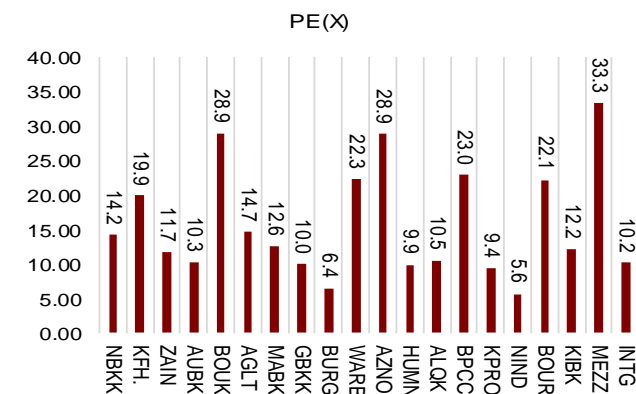
Market Capitalization



Price to Book Value



Price to Earning Value

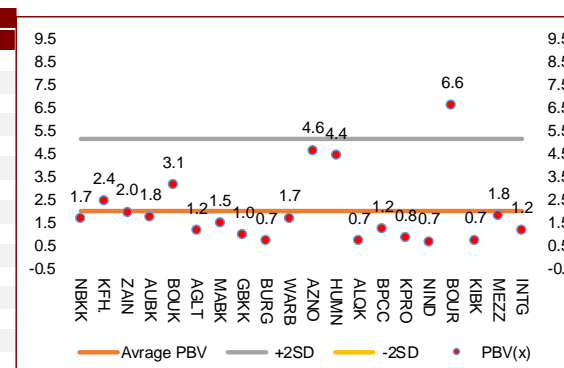


DAILY MARKET COVERAGE REPORT

NIC MENA SECURITIES - RESEARCH AND STUDIES DEP



Premier Market	Price			Valuation Multiples			MKT Cap	Price Performance		ROE	ROA
	Company	Close (KD)	Day Δ	Day % Δ	PBV(X)	PE(X)		DY%	MTD(%)		
National Bank of Kuwait	0.840	-0.009	-1.06%	1.66	14.2	3.8%	5,705	-3.2%	-17.4%	11.7%	1.4%
Kuwait Finance House	0.659	-0.003	-0.45%	2.43	19.9	2.5%	5,001	-0.3%	-10.6%	12.2%	1.3%
Mobile Telecommunications	0.587	-0.010	-1.68%	1.96	11.7	5.3%	2,540	2.6%	-1.8%	16.7%	4.6%
Ahli United Bank BSC	0.234	0.001	0.43%	1.76	10.3	5.2%	2,259	-0.9%	-21.0%	17.1%	1.8%
Boubyan Bank	0.598	-0.009	-1.48%	3.15	28.9	1.1%	1,811	0.8%	-1.7%	10.9%	1.2%
Agility Public Warehousing	0.665	-0.003	-0.45%	1.16	14.7	2.7%	1,273	0.5%	-7.2%	7.9%	4.2%
Mabane Co.	0.642	-0.015	-2.28%	1.50	12.6	1.6%	709	-12.1%	-24.8%	11.9%	5.8%
Gulf Bank	0.219	-0.007	-3.10%	0.96	10.0	4.6%	636	0.0%	-27.4%	9.6%	1.0%
Burgan Bank	0.207	-0.001	-0.48%	0.72	6.4	5.5%	542	2.5%	-31.9%	11.3%	1.2%
Warba Bank	0.234	-0.002	-0.85%	1.69	22.3	0.0%	369	-5.6%	-10.3%	7.6%	0.5%
Shamal Az-Zour Al-Oula Power & Water	0.323	-0.002	-0.62%	4.64	28.9	0.0%	355	1.6%	0.0%	16.1%	2.3%
Human Soft Holding	2.920	-0.010	-0.34%	4.42	9.9	6.3%	355	11.9%	-3.4%	44.6%	30.3%
Qurain Petrochemical Industries	0.291	-0.007	-2.35%	0.71	10.5	5.3%	297	6.2%	-6.1%	6.7%	3.6%
Boubyan Petrochemical	0.538	-0.008	-1.47%	1.21	23.0	9.6%	271	-0.7%	-18.3%	5.3%	2.1%
Kuwait Projects Company Holding	0.155	-0.002	-1.27%	0.83	9.4	6.0%	281	4.0%	-27.3%	8.9%	0.3%
National Industries Group Holding	0.182	-0.005	-2.67%	0.69	5.6	5.9%	260	10.2%	-24.1%	12.3%	3.7%
Boursa Kuwait Securities Co	1.056	-0.004	-0.38%	6.60	22.1	0.0%	212	-7.0%	0.0%	29.9%	26.5%
Kuwait International Bank	0.205	-0.003	-1.44%	0.74	12.2	4.9%	209	11.3%	-20.7%	6.1%	0.6%
Mezzan Holding	0.617	0.000	0.00%	1.78	33.3	2.7%	188	-1.0%	23.4%	5.3%	2.2%
Integrated Holding	0.366	-0.008	-2.14%	1.17	10.2	10.9%	81	4.2%	-32.1%	11.5%	8.5%
Total		-57.39	-0.95%	1.69	14.03	3.58%	23,353	-0.7%	-14.3%	12.01%	1.56%



Premier Market	Price			Moving Average			RSI	MKT Cap	Price Performance		52 Week (KD)	
	Discription	Close (KD)	Day Δ	Day % Δ	50 Day	200 Day			14 Day	Mn KD	MTD(%)	YTD (%)
Premier Index	5,979	-57.39	-0.95%	6,034	5,833	33	23,353	-0.7%	-14.3%	7,172	4,499	

Top 5 Performrs (Today's Price Change)

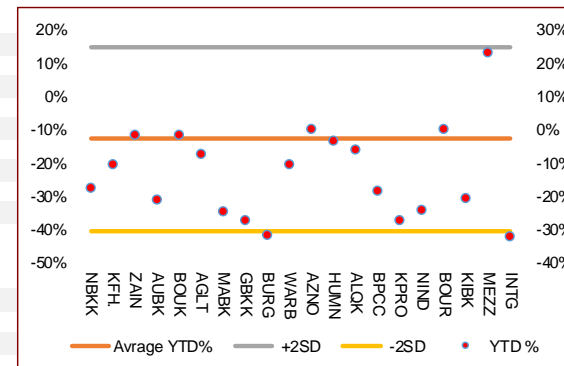
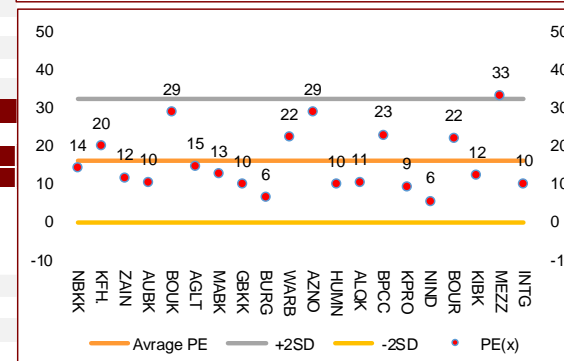
Ahli United Bank BSC	0.234	0.001	0.43%	0.235	0.225	31	2,259	-0.9%	-21.0%	0.311	0.160
Mezzan Holding	0.617	0.000	0.00%	0.629	0.565	47	188	-1.0%	23.4%	0.665	0.428
Human Soft Holding	2.920	-0.010	-0.34%	2.721	2.774	76	355	11.9%	-3.4%	3.470	1.944
Boursa Kuwait Securities Co	1.056	-0.004	-0.38%	0.667	0.167	16	212	-7.0%	0.0%	1.210	0.990
Kuwait Finance House	0.659	-0.003	-0.45%	0.658	0.636	26	5,001	-0.3%	-10.6%	0.761	0.473

Middel Performrs (Today's Price Change)

Agility Public Warehousing	0.665	-0.003	-0.45%	0.655	0.613	17	1,273	0.5%	-7.2%	0.748	0.357
Burgan Bank	0.207	-0.001	-0.48%	0.207	0.222	33	542	2.5%	-31.9%	0.324	0.175
Shamal Az-Zour Al-Oula Power & Water	0.323	-0.002	-0.62%	0.330	0.082	36	355	1.6%	0.0%	0.500	0.297
Warba Bank	0.234	-0.002	-0.85%	0.233	0.219	18	369	-5.6%	-10.3%	0.279	0.164
National Bank of Kuwait	0.840	-0.009	-1.06%	0.871	0.839	22	5,705	-3.2%	-17.4%	1.062	0.654
Kuwait Projects Company Holding	0.155	-0.002	-1.27%	0.155	0.172	35	281	4.0%	-27.3%	0.223	0.147
Kuwait International Bank	0.205	-0.003	-1.44%	0.192	0.200	34	209	11.3%	-20.7%	0.270	0.162
Boubyan Petrochemical	0.538	-0.008	-1.47%	0.554	0.563	30	271	-0.7%	-18.3%	0.760	0.395
Boubyan Bank	0.598	-0.009	-1.48%	0.596	0.547	37	1,811	0.8%	-1.7%	0.642	0.380
Mobile Telecommunications	0.587	-0.010	-1.68%	0.100	0.100	36	2,540	2.6%	-1.8%	1.210	0.996

Bottom 5 Performrs (Today's Price Change)

Gulf Bank	0.219	-0.007	-3.10%	0.223	0.232	32	636	0.0%	-27.4%	0.317	0.180
National Industries Group Holding	0.182	-0.005	-2.67%	0.175	0.180	53	260	10.2%	-24.1%	0.247	0.121
Qurain Petrochemical Industries	0.291	-0.007	-2.35%	0.288	0.265	48	297	6.2%	-6.1%	0.323	0.163
Mabane Co.	0.642	-0.015	-2.28%	0.689	0.675	2	709	-12.1%	-24.8%	0.877	0.434
Integrated Holding	0.366	-0.008	-2.14%	0.370	0.433	46	81	4.2%	-32.1%	0.600	0.342



DAILY MARKET COVERAGE REPORT

NIC MENA SECURITIES - RESEARCH AND STUDIES DEP



Banking Sector		Price			Valuation Multiples			MKT Cap	Price Performance		Trading Indicators		ROE	ROA	52 Week (KD)		MKT Cap
Company	Close (KD)	Day Δ	Day % Δ	PBV(X)	PE(X)	DY%	Mn KD	MTD(%)	YTD (%)	Value (Mn KD)	(Mn Shrs)	(%)	(%)	High	Low	%	
National Bank of Kuwait	0.840	-0.009	-1.06%	1.66	14.22	3.8%	5,705	-3%	-17%	12.65	14.90	11.7%	1.4%	1.062	0.654	18.14%	
Kuwait Finance House	0.659	-0.003	-0.45%	2.43	19.92	2.5%	5,001	0%	-11%	13.72	20.67	12.2%	1.3%	0.761	0.473	15.90%	
Ahli United Bank BSC	0.234	0.001	0.43%	1.76	10.31	5.2%	2,259	-1%	-21%	8.23	35.21	17.1%	1.8%	0.311	0.160	7.18%	
Boubyan Bank	0.598	-0.009	-1.48%	3.15	28.90	1.1%	1,811	1%	-2%	1.81	3.01	10.9%	1.2%	0.642	0.380	5.76%	
Commercial Bank of Kuwait	0.500	0.000	0.00%	1.32	0.00	3.7%	965	0%	-5%	0.00	0.00	0.0%	0.0%	0.555	0.465	3.07%	
Gulf Bank	0.219	-0.007	-3.10%	0.96	9.99	4.6%	636	0%	-27%	2.17	9.72	9.6%	1.0%	0.317	0.180	2.02%	
Burgan Bank	0.207	-0.001	-0.48%	0.72	6.41	5.5%	542	2%	-32%	0.31	1.47	11.3%	1.2%	0.324	0.175	1.72%	
Ahli United Bank	0.277	-0.001	-0.36%	1.19	9.82	4.9%	540	2%	-15%	0.12	0.45	12.1%	1.3%	0.330	0.225	1.72%	
Warba Bank	0.234	-0.002	-0.85%	1.69	22.29	0.0%	369	-6%	-10%	1.57	6.64	7.6%	0.5%	0.279	0.164	1.17%	
Al Ahli Bank of Kuwait	0.200	-0.001	-0.50%	0.57	11.20	7.0%	321	8%	-22%	0.17	0.84	5.1%	0.6%	0.293	0.156	1.02%	
Kuwait International Bank	0.205	-0.003	-1.44%	0.74	12.19	4.9%	209	11%	-21%	2.85	13.72	6.1%	0.6%	0.270	0.162	0.66%	
Total Banking Sector - 11 Companies				1.67	15.30	3.4%	18,358			43.62	106.64	10.90%	1.21%			58.37%	

Basic materials		Price			Valuation Multiples			MKT Cap	Price Performance		Trading Indicators		ROE	ROA	52 Week (KD)		MKT Cap
Company	Close (KD)	Day Δ	Day % Δ	PBV(X)	PE(X)	DY%	Mn KD	MTD(%)	YTD (%)	Value (Mn KD)	(Mn Shrs)	(%)	(%)	High	Low	%	
Qurain Petrochemical Industries	0.291	-0.007	-2.35%	0.71	10.53	5.3%	297	6%	-6%	0.35	1.20	6.7%	3.6%	0.323	0.163	0.95%	
Boubyan Petrochemical	0.538	-0.008	-1.47%	1.21	22.95	9.6%	271	-1%	-18%	0.23	0.43	5.3%	2.1%	0.760	0.395	0.86%	
Al Kout Industrial Projects	0.731	0.000	0.00%	2.38	15.41	6.8%	74	-5%	-14%	0.00	0.00	15.4%	11.3%	0.850	0.731	0.23%	
Kuwait Foundry	0.252	0.000	0.00%	0.84	20.37	21.2%	18	-2%	-25%	0.00	0.00	4.1%	3.8%	0.409	0.192	0.06%	
Total Basic materials - 4 Companies				0.95	14.44	7.7%	661			0.59	1.63	6.57%	5.07%			2.10%	

Consumer goods		Price			Valuation Multiples			MKT Cap	Price Performance		Trading Indicators		ROE	ROA	52 Week (KD)		MKT Cap
Company	Close (KD)	Day Δ	Day % Δ	PBV(X)	PE(X)	DY%	Mn KD	MTD(%)	YTD (%)	Value (Mn KD)	(Mn Shrs)	(%)	(%)	High	Low	%	
Mezzan Holding	0.617	0.000	0.00%	1.78	33.34	2.7%	188	-1%	23%	0.05	0.09	5.3%	2.2%	0.665	0.428	0.60%	
Livestock Transport and Trading	0.189	0.004	2.16%	0.98	33.69	0.1%	40	3%	8%	0.03	0.16	2.9%	2.0%	0.200	0.152	0.13%	
Danah Al Safat Foodstuff	0.012	0.000	0.00%	0.25	(0.30)	0.1%	1	0%	-25%	0.00	0.00	-84.8%	-43.2%	0.018	0.010	0.00%	
Total Basic materials - 3 Companies				1.52	92.67	2.2%	229			0.08	0.24	1.64%	0.90%			0.73%	

DAILY MARKET COVERAGE REPORT

NIC MENA SECURITIES - RESEARCH AND STUDIES DEP

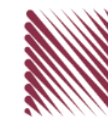


Consumer services		Price			Valuation Multiples			MKT Cap	Price Performance		Trading Indicators		ROE	ROA	52 Week (KD)		MKT Cap
Company	Close (KD)	Day Δ	Day % Δ	PBV(X)	PE(X)	DY%	Mn KD	MTD(%)	YTD (%)	Value (Mn KD)	(Mn Shrs)	(%)	(%)	High	Low	%	
Jazeera Airways	0.568	-0.002	-0.35%	2.82	7.60	6.2%	114	-4%	-48%	0.14	0.25	37.1%	9.0%	1.110	0.372	0.36%	
Kuwait National Cinema	0.693	-0.002	-0.29%	0.80	7.50	7.0%	64	-1%	-34%	0.00	0.00	10.6%	7.2%	1.050	0.600	0.20%	
Oula Fuel Marketing	0.115	-0.001	-0.86%	0.69	12.03	5.1%	47	4%	-9%	0.00	0.03	5.7%	3.2%	0.134	0.095	0.15%	
Al Soor Fuel Marketing	0.114	-0.001	-0.87%	0.70	13.34	4.3%	46	4%	-9%	0.01	0.05	5.3%	3.7%	0.129	0.096	0.15%	
Sultan Center Food Products	0.098	0.000	0.00%	0.59	12.04	0.0%	27	-7%	-6%	0.00	0.00	4.9%	0.7%	0.120	0.078	0.09%	
Jiyad Holding	0.049	0.000	0.62%	0.44	9.77	0.0%	17	22%	26%	0.00	0.00	4.5%	2.8%	0.054	0.029	0.05%	
IFA Hotels and Resorts	0.020	-0.002	-9.17%	0.71	(0.54)	0.0%	12	-10%	-62%	0.03	1.55	-131.5%	-8.1%	0.062	0.020	0.04%	
Kuwait Resorts	0.053	0.000	-0.75%	0.36	9.62	0.0%	10	1%	-9%	0.01	0.27	3.8%	3.2%	0.060	0.038	0.03%	
Alrai Media Group	0.047	-0.028	-36.88%	0.47	(1.37)	0.0%	5	-10%	-12%	0.05	0.89	-34.2%	-20.0%	0.093	0.047	0.02%	
Future Kid Entertainment and Real Estate	0.080	0.000	0.00%	0.46	30.22	14.4%	9	0%	-9%	0.00	0.00	1.5%	0.9%	0.110	0.069	0.03%	
Al Eid Food	0.085	0.006	7.59%	0.57	6.79	0.0%	10	39%	22%	0.05	0.66	8.4%	6.1%	0.085	0.043	0.03%	
Kuwait Hotels	0.055	-0.005	-8.33%	0.77	(3.18)	0.0%	3	-48%	-45%	0.00	0.02	-24.4%	-13.2%	0.111	0.054	0.01%	
Palms Agro Production	0.080	0.000	0.00%	0.67	(56.04)	12.5%	4	22%	98%	0.00	0.00	-1.2%	-0.9%	0.080	0.025	0.01%	
Kuwait Cable Vision	0.014	0.000	0.00%	0.52	(11.65)	0.0%	1	0%	0%	0.00	0.00	-4.5%	-3.0%	0.026	0.012	0.00%	
Total Consumer services - 14 Companies				0.83	35.00	4.8%	369			0.30	3.73	2.38%	2.72%			1.17%	

Financial services		Price			Valuation Multiples			MKT Cap	Price Performance		Trading Indicators		ROE	ROA	52 Week (KD)		MKT Cap
Company	Close (KD)	Day Δ	Day % Δ	PBV(X)	PE(X)	DY%	Mn KD	MTD(%)	YTD (%)	Value (Mn KD)	(Mn Shrs)	(%)	(%)	High	Low	%	
Egypt Kuwait Holding	0.379	0.000	0.00%	2.25	12.79	5.2%	388	4%	-16%	0.00	0.00	17.6%	7.1%	0.494	0.318	1.23%	
Kuwait Projects Company Holding	0.155	-0.002	-1.27%	0.83	9.36	6.0%	281	4%	-27%	0.18	1.13	8.9%	0.3%	0.223	0.147	0.89%	
National Industries Group Holding	0.182	-0.005	-2.67%	0.69	5.61	5.9%	260	10%	-24%	1.74	9.37	12.3%	3.7%	0.247	0.121	0.83%	
Boursa Kuwait Securities Co	1.056	-0.004	-0.38%	6.60	22.10	0.0%	212	-7%	0%	0.11	0.11	29.9%	26.5%	1.210	0.990	0.67%	
GFH Financial Group	0.045	0.001	1.14%	0.48	6.07	6.4%	151	-10%	-36%	0.01	0.30	8.0%	1.3%	0.074	0.042	0.48%	
National Investments	0.134	-0.001	-0.74%	0.59	9.97	6.0%	107	1%	-3%	0.09	0.64	5.9%	5.0%	0.158	0.080	0.34%	
Tamdeen Investment	0.300	0.000	0.00%	0.37	12.44	4.0%	103	-2%	-13%	0.00	0.00	3.0%	2.2%	0.400	0.199	0.33%	
Alimtiq Investment Group	0.098	-0.001	-1.11%	0.47	5.11	8.1%	101	7%	-22%	0.35	3.55	9.1%	5.2%	0.137	0.071	0.32%	
Commercial Facilities	0.180	0.000	0.00%	0.56	6.93	9.3%	91	-1%	-17%	0.00	0.00	8.0%	4.2%	0.235	0.178	0.29%	
Aayan Leasing and Investment	0.085	-0.001	-0.70%	1.00	(4.67)	2.1%	68	-1%	84%	0.38	4.41	-21.4%	-4.9%	0.102	0.032	0.22%	
Kuwait Investment	0.123	-0.006	-4.65%	0.54	3.85	8.2%	67	-4%	-18%	0.17	1.40	13.9%	6.0%	0.172	0.095	0.21%	
Noor Financial Investment	0.177	0.003	1.72%	1.08	8.66	2.8%	70	12%	48%	0.90	5.11	12.5%	7.5%	0.184	0.076	0.22%	

DAILY MARKET COVERAGE REPORT

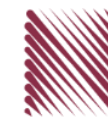
NIC MENA SECURITIES - RESEARCH AND STUDIES DEP



Financial services Company	Price			Valuation Multiples			MKT Cap	Price Performance		Trading Indicators		ROE	ROA	52 Week (KD)		MKT Cap
	Close (KD)	Day Δ	Day % Δ	PBV(X)	PE(X)	DY%	Mn KD	MTD(%)	YTD (%)	Value (Mn KD)	(Mn Shrs)	(%)	(%)	High	Low	%
Arzan Financial Group for Financing and Invest	0.057	0.000	0.00%	0.46	41.30	0.0%	45	1%	139%	0.09	1.66	1.1%	0.7%	0.064	0.022	0.14%
Kuwait Financial Centre	0.085	0.003	3.03%	0.43	5.84	5.8%	41	1%	-20%	0.02	0.20	7.3%	3.5%	0.121	0.070	0.13%
Gulf Investment House	0.091	-0.003	-2.69%	1.02	167.40	0.0%	37	-4%	41%	0.01	0.06	0.6%	0.5%	0.108	0.038	0.12%
Al Bareeq Holding	0.081	0.000	0.00%	0.85	16.18	0.0%	35	2%	-19%	0.00	0.00	5.2%	5.0%	0.110	0.072	0.11%
Arabi Group Holdings	0.198	0.000	0.00%	1.07	(19.90)	0.0%	33	0%	-28%	0.00	0.00	-5.4%	-0.6%	0.337	0.190	0.10%
Kuwait and Middle East Financial Investment	0.114	0.000	0.00%	1.85	45.53	0.0%	30	4%	27%	0.00	0.00	4.1%	3.2%	0.138	0.063	0.09%
Privatization Holding	0.044	0.002	3.77%	0.32	(39.67)	0.0%	27	5%	-11%	0.00	0.11	-0.8%	-0.5%	0.057	0.037	0.09%
Asiya Capital Investments	0.033	0.000	-1.19%	0.36	17.16	0.2%	26	4%	-19%	0.00	0.02	2.1%	2.0%	0.041	0.029	0.08%
Umm Al Qaiwain General Investment Co	0.072	0.000	0.00%	0.48	13.53	5.1%	26	0%	8%	0.00	0.00	3.6%	3.3%	0.096	0.052	0.08%
Securities House	0.043	0.000	0.24%	0.58	(62.13)	0.0%	24	0%	-4%	0.03	0.60	-0.9%	-0.7%	0.050	0.027	0.07%
KAMCO Investment	0.074	0.002	3.22%	0.45	8.32	0.0%	25	3%	-18%	0.02	0.25	5.4%	2.3%	0.111	0.060	0.08%
First Investment	0.034	-0.001	-1.73%	0.53	(0.47)	0.0%	22	8%	-1%	0.07	1.92	-113.6%	-62.0%	0.045	0.022	0.07%
Inovest BSC Public	0.073	-0.005	-6.03%	0.51	9.83	8.1%	22	4%	22%	0.01	0.15	5.2%	2.9%	0.081	0.044	0.07%
Coast Investment and Development	0.042	0.002	4.74%	0.45	41.86	0.0%	25	17%	5%	0.08	1.94	1.1%	1.0%	0.045	0.026	0.08%
Al Madar Finance and Investment	0.083	-0.004	-4.16%	0.75	12.38	0.0%	17	0%	-11%	0.12	1.39	6.1%	5.0%	0.143	0.062	0.05%
Bayan Investment	0.041	0.000	-0.49%	0.41	(21.19)	0.0%	15	-13%	8%	0.00	0.02	-1.9%	-0.8%	0.053	0.031	0.05%
Al Manar Financing and Leasing	0.045	0.000	0.00%	0.41	11.57	1.1%	14	1%	-13%	0.00	0.01	3.5%	2.7%	0.060	0.037	0.04%
Manazel Holding	0.033	-0.001	-1.81%	0.71	20.89	0.0%	14	2%	-17%	0.01	0.44	3.4%	0.8%	0.048	0.021	0.04%
Kuwait Finance and Investment	0.049	0.000	0.00%	0.38	21.82	0.0%	15	12%	-2%	0.00	0.00	1.8%	1.2%	0.058	0.038	0.05%
National International Holding	0.060	-0.003	-4.45%	0.32	7.23	4.9%	13	0%	-18%	0.01	0.11	4.4%	3.3%	0.081	0.052	0.04%
Osoul Investment	0.081	0.001	1.38%	0.61	6.81	0.0%	12	1%	8%	0.01	0.10	9.0%	8.2%	0.121	0.070	0.04%
UniCap Investment and Finance	0.042	0.000	0.00%	0.42	(21.02)	0.0%	10	-1%	-24%	0.01	0.14	-2.0%	-1.0%	0.057	0.035	0.03%
Amar Finance and Leasing	0.055	0.000	0.00%	0.62	46.05	0.0%	11	-2%	45%	0.00	0.00	1.3%	1.2%	0.064	0.037	0.03%
Gulf North Africa Holding	0.059	0.000	0.00%	0.78	76.01	0.0%	9	1%	-5%	0.00	0.00	1.0%	0.6%	0.062	0.052	0.03%
Al Salam Group Holding	0.026	-0.001	-2.22%	0.23	199.30	0.0%	7	3%	-10%	0.10	3.62	0.1%	0.1%	0.033	0.018	0.02%
International Financial Advisors	0.057	-0.001	-0.87%	1.72	(0.77)	1.1%	14	85%	7%	0.01	0.14	-222.8%	-19.3%	0.064	0.027	0.05%
Amwal International Investment	0.036	0.000	0.00%	0.66	13.12	0.0%	6	0%	18%	0.00	0.00	5.0%	2.6%	0.043	0.030	0.02%
Al Madina for Finance and Investment	0.016	0.000	-0.63%	0.54	(2.99)	0.0%	6	28%	5%	0.08	5.23	-17.9%	-7.7%	0.019	0.009	0.02%
Credit Rating and Collection	0.032	0.000	0.00%	0.97	(21.20)	0.0%	5	0%	58%	0.00	0.00	-4.6%	-4.3%	0.035	0.019	0.02%
Ekttitab Holding	0.016	0.000	-1.25%	0.38	(11.12)	0.0%	5	3%	5%	0.14	8.97	-3.4%	-3.0%	0.017	0.010	0.02%
Kuwait Syrian Holding Co	0.030	0.000	0.00%	0.26	(15.33)	0.0%	5	11%	-5%	0.00	0.01	-1.7%	-1.1%	0.043	0.022	0.02%
Warba Capital Holding	0.048	0.000	0.00%	0.53	(7.55)	0.0%	5	2%	-26%	0.00	0.00	-7.0%	-6.2%	0.070	0.042	0.02%
National Consumer Holding	0.043	0.000	-0.23%	0.48	212.53	0.0%	4	-10%	-21%	0.00	0.01	0.2%	0.2%	0.100	0.010	0.01%
Al Deera Holding	0.016	0.000	0.00%	0.70	(9.02)	0.0%	3	0%	-20%	0.00	0.00	-7.7%	-1.7%	0.022	0.011	0.01%
Al Mal Investment Company	0.008	0.000	5.00%	0.37	(0.78)	0.0%	3	-6%	-15%	0.03	3.59	-47.6%	-23.3%	0.016	0.008	0.01%
Gulf Franchising Holding	0.045	-0.005	-9.42%	0.71	(1.96)	0.0%	2	-6%	-40%	0.00	0.00	-36.2%	-10.8%	0.148	0.016	0.01%
Tamkeen Holding	0.005	0.000	0.00%	0.05	(7.18)	0.0%	0	0%	0%	0.00	0.00	-0.7%	-0.7%	0.005	0.005	0.00%
Total Financial services - 49 Companies				0.72	16.26	4.2%	2,511			4.77	56.70	4.42%	4.14%			7.98%

DAILY MARKET COVERAGE REPORT

NIC MENA SECURITIES - RESEARCH AND STUDIES DEP



Health care	Price			Valuation Multiples			MKT Cap	Price Performance		Trading Indicators		ROE	ROA	52 Week (KD)		MKT Cap
Company	Close (KD)	Day Δ	Day % Δ	PBV(X)	PE(X)	DY%	Mn KD	MTD(%)	YTD (%)	Value (Mn KD)	(Mn Shrs)	(%)	(%)	High	Low	%
Al-Maidan Clinic for Oral Health Services	1.220	0.000	0.00%	7.90	47.78	0.6%	305	0%	0%	0.00	0.00	16.5%	10.9%	1.220	1.220	0.97%
Advanced Technology	0.600	0.000	0.00%	1.56	48.85	2.5%	90	1%	-26%	0.00	0.00	3.2%	0.7%	0.900	0.580	0.29%
Yiaco Medical	0.707	0.000	0.00%	6.06	52.72	0.0%	12	0%	0%	0.00	0.00	11.5%	0.6%	0.707	0.707	0.04%
Total Health care - 3 Companies				4.15	48.14	1.0%	407			0.00	0.00	8.61%	4.68%			1.29%

Industrials	Price			Valuation Multiples			MKT Cap	Price Performance		Trading Indicators		ROE	ROA	52 Week (KD)		MKT Cap
Company	Close (KD)	Day Δ	Day % Δ	PBV(X)	PE(X)	DY%	Mn KD	MTD(%)	YTD (%)	Value (Mn KD)	(Mn Shrs)	(%)	(%)	High	Low	%
Agility Public Warehousing	0.665	-0.003	-0.45%	1.16	14.67	2.7%	1,273	0%	-7%	1.78	2.68	7.9%	4.2%	0.748	0.357	4.05%
Human Soft Holding	2.920	-0.010	-0.34%	4.42	9.90	6.3%	355	12%	-3%	0.50	0.17	44.6%	30.3%	3.470	1.944	1.13%
ALAFCO Aviation Lease and Finance	0.159	-0.003	-1.85%	0.47	8.55	6.3%	151	2%	-41%	0.11	0.69	5.5%	1.4%	0.276	0.138	0.48%
Kuwait Cement	0.220	-0.002	-0.90%	0.75	39.05	6.8%	157	14%	-11%	0.11	0.52	1.9%	1.3%	0.258	0.144	0.50%
Gulf Cable and Electrical Industries	0.629	-0.027	-4.12%	0.76	31.20	4.4%	132	-8%	29%	1.34	2.09	2.4%	2.2%	0.742	0.390	0.42%
Integrated Holding	0.366	-0.008	-2.14%	1.17	10.19	10.9%	81	4%	-32%	0.17	0.47	11.5%	8.5%	0.600	0.342	0.26%
Kuwait Portland Cement	0.779	-0.001	-0.13%	1.05	10.29	12.6%	78	4%	-21%	0.01	0.01	10.2%	8.2%	1.133	0.683	0.25%
Educational Holding Group	0.305	0.000	0.00%	1.76	9.66	4.9%	75	-1%	-31%	0.00	0.00	18.3%	16.7%	0.475	0.228	0.24%
United Projects for Aviation Services	0.353	-0.018	-4.85%	0.74	6.04	5.9%	56	-24%	-31%	0.00	0.00	12.3%	7.8%	0.512	0.353	0.18%
Heavy Engineering Industries and Shipbuilding	0.377	0.000	0.00%	1.09	6.05	7.8%	68	4%	-7%	0.07	0.19	18.0%	5.9%	0.419	0.298	0.22%
National Industries	0.151	0.000	0.00%	0.63	12.31	6.5%	53	-3%	-8%	0.01	0.04	5.1%	3.8%	0.173	0.143	0.17%
ACICO Industries	0.097	-0.001	-1.13%	0.31	12.56	5.1%	32	-4%	-27%	0.00	0.01	2.5%	0.6%	0.137	0.081	0.10%
Kuwait Company for Process Plant Constructi	0.314	-0.001	-0.32%	1.24	6.73	5.7%	33	3%	30%	0.01	0.05	18.5%	7.7%	0.337	0.175	0.11%
Ras Al Khaimah for White Cement and Constr	0.065	0.000	0.00%	0.51	19.94	8.4%	33	0%	0%	0.00	0.00	2.6%	2.0%	0.080	0.060	0.10%
Combined Group Contracting	0.181	0.001	0.56%	0.63	8.15	11.3%	29	5%	-28%	0.06	0.31	7.7%	1.2%	0.251	0.138	0.09%
Gulf Cement	0.033	0.000	0.30%	0.33	(12.07)	12.5%	27	0%	-40%	0.00	0.11	-2.7%	-2.2%	0.058	0.029	0.09%
Sharjah Cement and Industrial Development	0.042	0.000	0.00%	0.21	25.32	12.4%	26	0%	0%	0.00	0.00	0.8%	0.6%	0.060	0.042	0.08%
KGL Logistics	0.028	-0.001	-3.75%	0.21	4.58	0.1%	21	5%	-24%	0.01	0.21	4.6%	2.9%	0.043	0.023	0.07%
Kuwait and Gulf Link Transport	0.051	0.000	0.78%	0.21	15.55	0.0%	14	10%	-23%	0.00	0.08	1.4%	0.4%	0.077	0.042	0.05%
Shuaiba Industrial	0.150	0.000	0.00%	0.84	46.32	6.6%	15	15%	-3%	0.00	0.01	1.8%	1.4%	0.180	0.122	0.05%
National Cleaning	0.054	-0.002	-3.73%	0.32	7.25	9.3%	12	-5%	-21%	0.00	0.03	4.4%	1.5%	0.088	0.047	0.04%
Fujairah Cement Industries	0.037	0.002	4.83%	0.15	17.89	11.4%	13	8%	-18%	0.00	0.05	0.8%	0.4%	0.051	0.029	0.04%
Hilal Cement	0.114	0.000	0.00%	0.99	(9.37)	13.2%	12	0%	14%	0.00	0.00	-10.6%	-6.2%	0.126	0.063	0.04%
Mubarrad Holding	0.060	-0.001	-1.31%	0.48	9.70	7.8%	10	1%	-30%	0.01	0.22	4.9%	4.1%	0.089	0.049	0.03%
Specialities Group Holding	0.064	0.000	0.31%	0.34	7.58	0.0%	10	3%	-17%	0.01	0.11	4.5%	3.5%	0.078	0.050	0.03%
National Ranges	0.021	0.004	21.64%	0.38	(1.52)	0.0%	6	49%	109%	0.28	13.62	-24.9%	-5.3%	0.025	0.007	0.02%
Salbookh Trading	0.035	0.000	-0.57%	0.48	(2.05)	0.0%	4	-7%	-33%	0.00	0.01	-23.2%	-15.9%	0.051	0.026	0.01%
Metal and Recycling	0.038	0.000	0.00%	0.32	(1.61)	0.0%	3	-3%	-24%	0.00	0.00	-19.7%	-10.1%	0.070	0.020	0.01%
Equipment Holding	0.016	0.000	1.97%	0.31	(178.99)	0.0%	2	-3%	-29%	0.00	0.03	-0.2%	-0.1%	0.024	0.013	0.01%
Total Industrials - 29 Companies				0.88	13.25	5.0%	2,780			4.49	21.69	6.67%	5.05%			8.84%

DAILY MARKET COVERAGE REPORT

NIC MENA SECURITIES - RESEARCH AND STUDIES DEP



Insurance	Price			Valuation Multiples			MKT Cap	Price Performance		Trading Indicators		ROE	ROA	52 Week (KD)		MKT Cap
	Company	Close (KD)	Day Δ	Day % Δ	PBV(X)	PE(X)	DY%	Mn KD	MTD(%)	YTD (%)	Value (Mn KD)	(Mn Shrs)	(%)	(%)	High	Low
Gulf Insurance Group	0.614	0.015	2.50%	1.05	8.57	6.0%	114	-14%	-7%	0.00	0.00	12.3%	1.7%	0.720	0.550	0.36%
Al Ahleia Insurance	0.425	0.006	1.43%	0.80	8.56	7.9%	88	6%	4%	0.03	0.08	9.4%	3.3%	0.445	0.367	0.28%
Kuwait Insurance	0.375	0.000	0.00%	0.61	7.26	6.4%	69	4%	14%	0.00	0.00	8.5%	4.6%	0.380	0.300	0.22%
Kuwait Reinsurance	0.225	0.000	0.00%	0.85	9.63	1.9%	46	2%	63%	0.00	0.00	8.9%	3.2%	0.225	0.126	0.14%
Bahrain Kuwait Insurance	0.200	0.000	0.00%	0.93	12.86	6.1%	28	0%	0%	0.00	0.00	7.2%	1.1%	0.200	0.200	0.09%
Warba Insurance	0.075	0.000	0.40%	0.33	10.65	0.0%	12	3%	24%	0.00	0.01	3.1%	1.0%	0.094	0.051	0.04%
First Takaful Insurance	0.038	0.000	0.00%	0.46	4.78	0.0%	4	2%	-1%	0.00	0.00	9.6%	5.9%	0.056	0.031	0.01%
Wethaq Takaful Insurance	0.021	0.000	1.43%	0.19	(26.96)	0.0%	2	-10%	-15%	0.01	0.35	-0.7%	-0.7%	0.035	0.018	0.01%
Total Insurance - 8 Companies				0.77	8.67	5.7%	364			0.04	0.44	8.86%	3.00%			1.16%

Oil and Gas	Price			Valuation Multipels			MKT Cap	Price Performance		Trading Indicators		ROE	ROA	52 Week (KD)		MKT Cap
	Company	Close (KD)	Day Δ	Day % Δ	PBV(X)	PE(X)	DY%	Mn KD	MTD(%)	YTD (%)	Value (Mn KD)	(Mn Shrs)	(%)	(%)	High	Low
National Petroleum Services	1.150	0.000	0.00%	2.74	9.81	6.1%	112	5%	-2%	0.00	0.00	27.9%	23.6%	1.389	0.903	0.35%
Independent Petroleum Group	0.430	0.000	0.00%	0.79	11.72	7.0%	78	0%	-11%	0.00	0.00	6.8%	2.2%	0.497	0.375	0.25%
Burgan for Well Drilling Trading and Maintenanc	0.078	0.002	2.63%	0.28	7.92	0.0%	18	0%	-3%	0.00	0.01	3.6%	1.1%	0.094	0.060	0.06%
Energy House Holding	0.022	0.001	2.34%	0.68	(3.00)	0.0%	16	11%	-4%	0.00	0.00	-22.5%	-17.0%	0.036	0.014	0.05%
Gulf Petroleum Investment	0.020	0.000	-0.50%	0.22	(6.38)	0.0%	9	8%	-1%	0.06	3.24	-3.4%	-2.3%	0.023	0.012	0.03%
Senegy Holding	0.020	0.000	-1.50%	0.40	(0.82)	0.0%	4	4%	-10%	0.02	1.00	-47.9%	-30.4%	0.027	0.014	0.01%
Total Oil and Gas - 6 Companies				0.85	27.46	5.2%	237			0.08	4.25	3.10%	2.18%			0.75%

Real estate	Price			Valuation Multiples			MKT Cap	Price Performance		Trading Indicators		ROE	ROA	52 Week (KD)		MKT Cap
	Company	Close (KD)	Day Δ	Day % Δ	PBV(X)	PE(X)	DY%	Mn KD	MTD(%)	YTD (%)	Value (Mn KD)	(Mn Shrs)	(%)	(%)	High	Low
Mabane Co.	0.642	-0.015	-2.28%	1.50	12.58	1.6%	709	-12%	-25%	2.12	3.25	11.9%	5.8%	0.877	0.434	2.26%
Salhia Real Estate	0.398	0.002	0.51%	1.20	9.15	5.0%	197	0%	-5%	0.01	0.04	13.2%	5.8%	0.460	0.332	0.63%
Commercial Real Estate	0.101	0.000	0.00%	0.62	12.51	5.7%	182	0%	10%	0.03	0.28	5.0%	2.7%	0.112	0.085	0.58%
National Real Estate	0.074	0.000	0.14%	0.41	9.75	0.0%	112	-1%	-15%	0.10	1.41	4.2%	2.4%	0.090	0.058	0.35%
Tamdeen Real Estate	0.254	0.000	0.00%	0.37	12.39	4.0%	102	-3%	-21%	0.00	0.00	3.0%	2.2%	0.343	0.241	0.32%
Kuwait Real Estate	0.099	0.000	-0.20%	0.69	12.53	0.4%	88	5%	-6%	0.07	0.72	5.5%	2.2%	0.115	0.070	0.28%
United Real Estate	0.043	0.000	0.00%	0.25	(6.40)	0.0%	46	-12%	-31%	0.01	0.13	-3.9%	-1.2%	0.063	0.041	0.15%
First Dubai for Real Estate Development	0.039	-0.001	-3.50%	0.52	42.33	1.0%	39	2%	11%	0.02	0.47	1.2%	1.0%	0.055	0.027	0.12%
Al Mazaya Holding	0.054	0.001	1.13%	0.42	(3.84)	0.1%	34	1%	-10%	0.01	0.14	-11.0%	-3.8%	0.067	0.047	0.11%
Ajial Real Estate Entertainment	0.153	0.000	0.00%	0.24	14.79	0.0%	30	6%	-11%	0.00	0.00	1.6%	1.4%	0.213	0.115	0.09%
Injazzat Real Estate Development	0.071	-0.004	-4.93%	0.46	(3.42)	9.7%	24	-10%	-11%	0.00	0.03	-13.4%	-7.0%	0.084	0.061	0.08%

DAILY MARKET COVERAGE REPORT

NIC MENA SECURITIES - RESEARCH AND STUDIES DEP



Real estate Company	Price			Valuation Multiples			MKT Cap	Price Performance		Trading Indicators		ROE	ROA	52 Week (KD)		MKT Cap
	Close (KD)	Day Δ	Day % Δ	PBV(X)	PE(X)	DY%	Mn KD	MTD(%)	YTD (%)	Value (Mn KD)	(Mn Shrs)	(%)	(%)	High	Low	%
Munshaat Real Estate Projects	0.074	-0.001	-1.33%	0.50	27.27	2.9%	24	5%	0%	0.00	0.01	1.8%	0.7%	0.090	0.045	0.08%
Aayan Real Estate	0.057	0.000	-0.18%	0.33	11.15	8.4%	24	-3%	-22%	0.00	0.02	3.0%	1.9%	0.080	0.048	0.08%
Al Argan International Real Estate	0.103	0.000	0.00%	0.30	33.38	4.7%	26	11%	-2%	0.00	0.00	0.9%	0.3%	0.135	0.060	0.08%
Al-Enmaa Real Estate	0.048	0.000	-0.84%	0.48	12.56	0.0%	21	1%	-24%	0.05	0.97	3.8%	2.4%	0.079	0.037	0.07%
Ream Real Estate	0.088	-0.005	-4.98%	0.67	(3.53)	2.5%	10	-57%	0%	0.00	0.00	-19.0%	-10.1%	0.204	0.060	0.03%
Arkan Al Kuwait Real Estate	0.085	0.000	0.00%	0.60	9.17	9.2%	21	4%	-5%	0.00	0.00	6.6%	3.5%	0.100	0.076	0.07%
Kuwait Business Town Real Estate	0.033	0.001	2.17%	0.30	8.43	0.2%	21	12%	-25%	0.05	1.46	3.6%	2.7%	0.046	0.022	0.07%
Dalqan Real Estate	0.318	0.000	0.00%	2.91	58.98	0.0%	19	0%	0%	0.00	0.00	4.9%	4.9%	0.318	0.318	0.06%
Sokouk Holding	0.027	0.000	1.53%	0.33	(4.43)	0.0%	15	-3%	-25%	0.01	0.46	-7.4%	-4.7%	0.040	0.022	0.05%
Tijara and Realestate Investment	0.045	0.000	0.00%	0.42	11.79	4.4%	17	11%	-10%	0.00	0.00	3.6%	1.9%	0.055	0.034	0.05%
Al-Arabiya Real Estate	0.026	-0.001	-1.92%	0.22	7.73	2.4%	13	-3%	-13%	0.01	0.45	2.9%	1.1%	0.033	0.020	0.04%
Aqar Real Estate Investments	0.062	0.000	0.00%	0.45	5.14	8.1%	13	4%	-23%	0.00	0.00	8.7%	7.3%	0.089	0.056	0.04%
Mashaer Holding	0.059	-0.001	-1.01%	0.45	6.35	0.0%	11	2%	-24%	0.00	0.00	7.1%	5.0%	0.086	0.048	0.03%
Investors Holding Group	0.018	0.000	-2.17%	0.91	(0.85)	0.0%	11	15%	125%	0.08	4.21	-106.5%	-57.2%	0.032	0.007	0.04%
Dar Al Thuraya Real Estate	0.068	-0.001	-0.73%	0.65	17.93	0.0%	10	-6%	-3%	0.00	0.01	3.6%	3.6%	0.190	0.040	0.03%
Osos Holding Group	0.090	0.000	0.00%	0.72	6.79	10.5%	9	3%	-10%	0.00	0.00	10.5%	7.0%	0.118	0.081	0.03%
Al Massaleh Real Estate	0.037	0.000	-0.53%	0.42	(5.20)	0.0%	9	8%	1%	0.02	0.50	-8.1%	-1.9%	0.040	0.026	0.03%
Abyaar Real Estate Development	0.007	0.000	0.00%	0.21	(0.51)	0.0%	8	0%	-6%	0.00	0.00	-40.9%	-12.4%	0.011	0.005	0.03%
Kuwait Remal Real Estate	0.022	0.000	0.91%	0.33	(3.05)	0.0%	7	14%	-6%	0.01	0.52	-11.0%	-3.9%	0.027	0.013	0.02%
Kuwait Real Estate Holding	0.027	0.000	0.00%	0.04	0.71	6.7%	5	2%	-7%	0.00	0.00	5.5%	2.2%	0.034	0.022	0.02%
Taameer Real Estate Investment	0.021	0.001	7.14%	0.31	(4.44)	0.0%	5	12%	-21%	0.06	3.07	-7.0%	-4.5%	0.032	0.013	0.02%
Sanam Real Estate	0.035	0.000	0.00%	0.44	47.40	0.0%	4	0%	-12%	0.00	0.00	0.9%	0.9%	0.043	0.027	0.01%
Mena Real Estate	0.028	0.000	0.00%	0.20	(63.30)	0.0%	4	-1%	-33%	0.03	0.96	-0.3%	-0.2%	0.043	0.021	0.01%
Al Masaken International Real Estate Developr	0.025	-0.001	-2.31%	0.28	30.68	0.7%	2	-30%	-42%	0.02	0.64	0.9%	0.4%	0.074	0.025	0.01%
Real Estate Trade Centers	0.029	0.000	0.00%	0.16	165.69	0.0%	4	7%	25%	0.00	0.02	0.1%	0.1%	0.050	0.018	0.01%
Ajwan Gulf Real Estate	0.011	0.000	0.00%	0.19	(7.68)	0.0%	2	0%	-29%	0.00	0.00	-2.5%	-2.2%	0.016	0.009	0.01%
Effect Real Estate	0.021	0.000	0.00%	0.29	(8.85)	4.9%	2	0%	0%	0.00	0.00	-3.3%	-3.2%	0.021	0.021	0.01%
Al Mudon International Real Estate	0.020	-0.001	-4.74%	0.15	(10.39)	0.0%	2	33%	-14%	0.03	1.55	-1.5%	-1.4%	0.028	0.015	0.01%
Total Real estate - 39 Companies				0.62	22.02	2.6%	1,881			2.74	21.34	2.79%	2.96%			5.98%

DAILY MARKET COVERAGE REPORT

NIC MENA SECURITIES - RESEARCH AND STUDIES DEP



Technology	Price			Valuation Multiples			MKT Cap	Price Performance		Trading Indicators		ROE	ROA	52 Week (KD)		MKT Cap
	Company	Close (KD)	Day Δ	Day % Δ	PBV(X)	PE(X)		DY%	Mn KD	MTD(%)	YTD (%)			Value (Mn KD)	(Mn Shrs)	
Automated Systems	0.064	-0.007	-9.29%	0.50	(61.59)	6.3%	6	-10%	-10%	0.00	0.07	-0.8%	-0.7%	0.087	0.051	0.02%
Total Technology - 1 Companies				0.50	(61.59)	6.3%	6			0.00	0.07	-0.81%	-0.73%			0.02%

Telecom	Price			Valuation Multiples			MKT Cap	Price Performance		Trading Indicators		ROE	ROA	52 Week (KD)		MKT Cap
	Company	Close (KD)	Day Δ	Day % Δ	PBV(X)	PE(X)		DY%	Mn KD	MTD(%)	YTD (%)			Value (Mn KD)	(Mn Shrs)	
Mobile Telecommunications	0.587	-0.010	-1.68%	1.96	11.71	5.3%	2,540	3%	-2%	4.40	7.41	16.7%	4.6%	0.629	0.407	8.08%
Kuwait Telecommunications	0.845	0.000	0.00%	1.96	9.68	4.1%	422	1%	7%	0.02	0.02	20.2%	11.1%	0.870	0.680	1.34%
National Mobile Telecommunications	0.629	0.007	1.13%	0.55	10.46	10.3%	315	4%	-24%	0.01	0.01	5.3%	2.4%	0.835	0.550	1.00%
AAN Digital Services	0.013	0.000	-1.54%	0.38	41.75	0.0%	11	0%	-4%	0.05	3.75	0.9%	0.7%	0.021	0.009	0.04%
Hayat Communications	0.057	0.000	0.00%	0.49	24.15	0.0%	5	-3%	-24%	0.00	0.00	2.0%	0.8%	0.098	0.033	0.02%
Telecom - 5 Companies				1.55	11.31	5.6%	3,293			4.48	11.19	13.70%	7.86%			10.47%

Utilities	Price			Valuation Multiples			MKT Cap	Price Performance		Trading Indicators		ROE	ROA	52 Week (KD)		MKT Cap
	Company	Close (KD)	Day Δ	Day % Δ	PBV(X)	PE(X)		DY%	Mn KD	MTD(%)	YTD (%)			Value (Mn KD)	(Mn Shrs)	
Shamal Az-Zour Al-Oula Power & Water	0.323	-0.002	-0.62%	4.64	28.88	0.0%	355	2%	0%	0.77	2.37	16.1%	2.3%	0.500	0.297	1.13%
Total Utilities - 1 Companies				4.64	28.88	0.0%	355			0.77	2.37	16.06%	2.26%			1.13%

Total Market 173 Companies				1.25	15.19	3.87%	31,450			61.97	230.29	8.26%	2.76%			100%
-----------------------------------	--	--	--	-------------	--------------	--------------	---------------	--	--	--------------	---------------	--------------	--------------	--	--	-------------

End of Report

The information contained in this document is proprietary to NIC and is for use only by the persons to whom it is issued. This document is confidential and may not be distributed either in part or in whole without the express agreement of NIC. It is intended solely for the use of the individual or entity to whom it is addressed and others authorized to receive it.

Note : ROE and ROA is calculated based on LTM net profit & shareholders' equity and LTM Operating Profits & Total Assets

Sources : National Investments Company Research and Studies Departments



شركة الاستثمار الوطنية
NATIONAL INVESTMENTS COMPANY

Sharq, Al Mutanabi Street, Khaleejia Tower | P.O. Box 25667, Safat 13117, Kuwait

T.: +965 2226 6666 | Fax: +965 2226 6793 | www.nic.com.kw