



شركة الاستثمارات الوطنية
NATIONAL INVESTMENTS COMPANY

Boursa Kuwait – Daily Market Report
MENA Securities – Research & Studies Dep.
Wednesday, August 5, 2020

DAILY MARKET COVERAGE REPORT

NIC MENA SECURITIES - RESEARCH AND STUDIES DEP



Index	Close	DTD Chg Net	DTD (%)	YTD (%)	52W High	52W Low	MKT CAP Bn (KD)	PBV (X)	PE (X)	DY (%)
All Share Index	5,012.18	7.80	0.16%	-20.2%	6,416.43	4,339.58	28.53	1.11	13.93	4.27%
Premier Index	5,490.97	18.90	0.35%	-21.3%	7,172.32	4,498.65	20.85	1.52	12.70	4.01%
Main Index	4,066.20	-14.50	-0.36%	-17.1%	4,932.47	3,965.63	7.68	0.64	18.87	4.97%

Index	Value Mn(KD)	Volume (Mn share)
All Share Index	25.33	101.33
Premier Index	23.20	60.89
Main Index	2.13	40.44

Market Breadth	UP	Down	No Chg
All Share Index	39	54	79
Premier Index	9	5	4
Main Index	30	49	75

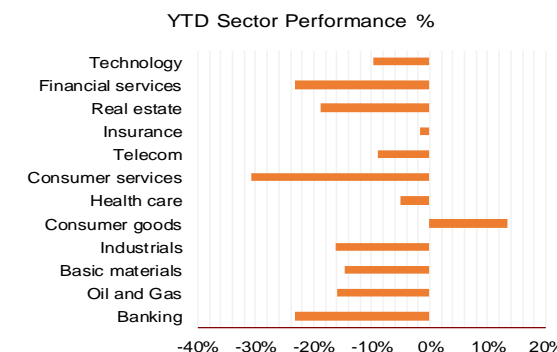
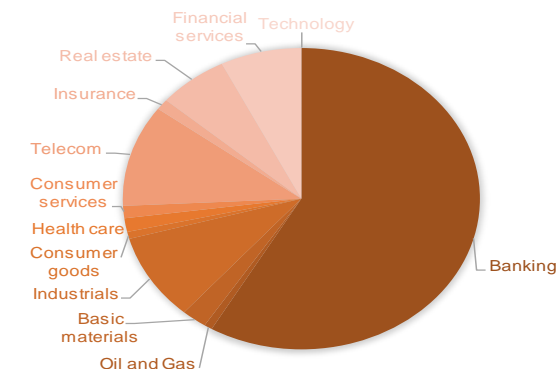
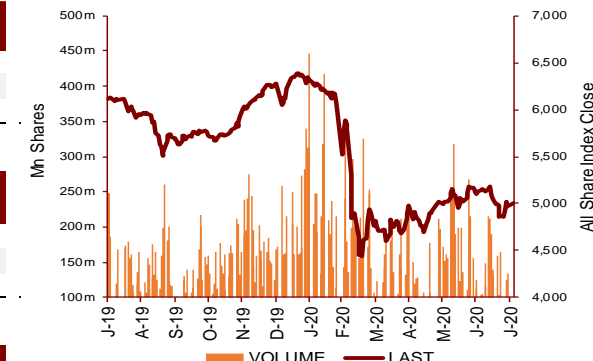
Today's Top 5 Gainer %	Close KD	Value KD	DTD (%)
Gulf Petroleum Investment Compan	0.016	130,830	7.33%
Mabane Company KPSC	0.638	472,151	4.25%
Salbookh Trading Co KSCP	0.031	2,212	4.03%
First Investment Co KSCP	0.028	88,846	3.66%
Kuwait Company for Process Pla	0.290	137,939	3.57%

Today's Top 5 by Value	Close KD	DTD Chg	Trade Val Mn(KD)
National Bank of Kuwait SAKP	0.796	-0.25%	5.46
Kuwait Finance House KSC	0.588	0.68%	4.60
Ahli United Bank BSC	0.191	0.00%	3.25
Mobile Telecommunications Comp	0.555	0.18%	2.44
Agility Public Warehousing Co	0.645	-0.15%	2.30

Today's Top 5 Loser %	Close KD	Value KD	DTD (%)
Dar Al Thuraya Real	0.117	2,572	-19.31%
Aqar Real Estate Inv	0.064	3,309	-14.19%
Kuwait Syrian Holdin	0.034	108	-13.67%
Warba Capital Holdin	0.047	11,866	-12.96%
National Petroleum S	1.020	103	-9.65%

Top 5 by Volume	Close KD	DTD Chg	Trade Vol Mn(Shrs)
Ahli United Bank BSC	0.191	0.00%	16.91
Gulf Bank KSCP	0.198	1.54%	10.89
Gulf Petroleum Inves	0.016	7.33%	8.26
Kuwait Finance House	0.588	0.68%	7.78
National Bank of Kuw	0.796	-0.25%	6.82

Sector	Close	DTD Chg Net	DTD (%)	YTD (%)	52W High	52W Low	MKT CAP Bn (KD)	PBV (X)	PE (X)	DY (%)
Banking	1,138.39	2.540	0.22%	-23.2%	1,536.8	986.4	16.66	1.41	13.88	3.8%
Oil and Gas	1,041.60	-50.940	-4.66%	-15.9%	1,372.2	985.7	0.21	0.76	24.38	5.8%
Basic materials	774.64	10.080	1.32%	-14.7%	1,054.0	561.7	0.65	0.94	14.26	7.8%
Industrials	776.94	0.620	0.08%	-16.2%	937.5	602.9	2.65	0.84	12.65	5.3%
Consumer goods	722.37	-5.150	-0.71%	13.4%	806.3	548.6	0.22	1.43	87.55	2.4%
Health care	839.19	0.000	0.00%	-5.1%	931.0	815.0	0.42	4.24	49.21	1.0%
Consumer services	743.47	-2.040	-0.27%	-30.7%	1,083.1	674.8	0.38	0.85	35.76	4.7%
Telecom	1,017.92	1.660	0.16%	-8.8%	1,116.7	802.2	3.12	1.47	10.71	5.9%
Insurance	938.94	-17.160	-1.79%	-1.6%	988.8	901.0	0.33	0.70	7.87	6.3%
Real estate	858.23	9.190	1.08%	-18.9%	1,083.4	763.2	1.80	0.59	21.12	2.7%
Financial services	830.06	-3.500	-0.42%	-23.2%	1,097.0	801.4	2.09	0.60	14.43	5.0%
Technology	465.60	0.000	0.00%	-9.6%	625.7	371.0	0.01	0.50	-62.08	6.3%
							28.53			



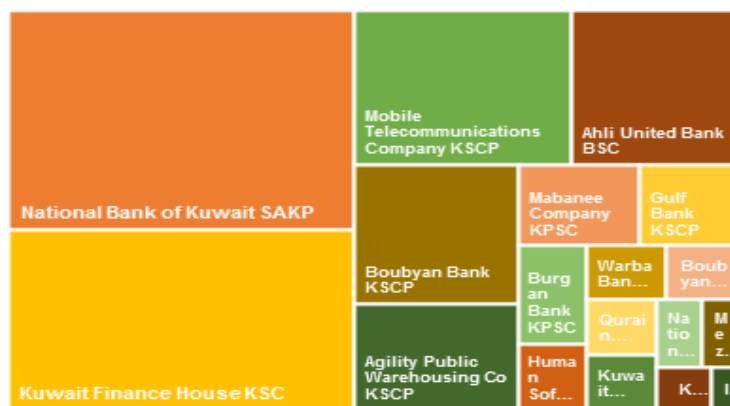
DAILY MARKET COVERAGE REPORT

NIC MENA SECURITIES - RESEARCH AND STUDIES DEP

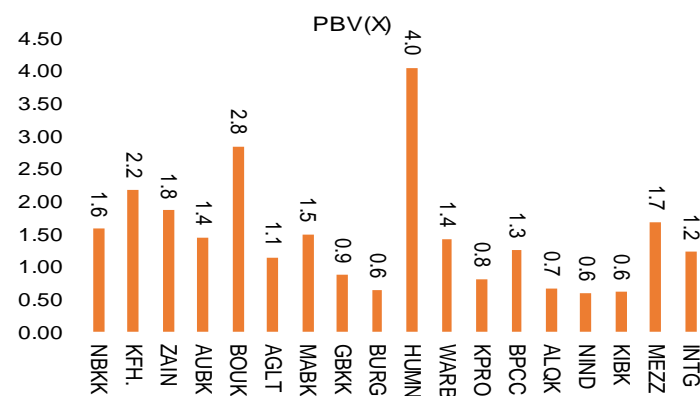


Premier Market	Price			Valuation Multiples			MKT Cap	Price Performance		Trading Indicators		ROE	ROA	52 Week (KD)	
	Close (KD)	Day Δ	Day % Δ	PBV(X)	PE(X)	DY%	Mn KD	MTD(%)	YTD (%)	Value (Mn KD)	(Mn Shrs)	(%)	(%)	High	Low
National Bank of Kuwait SAKP	0.796	-0.002	-0.25%	1.57	13.47	4.0%	5,406	1%	-22%	5.46	6.82	11.7%	1.4%	1.062	0.654
Kuwait Finance House KSC	0.588	0.004	0.68%	2.17	17.81	2.8%	4,471	2%	-20%	4.60	7.78	12.2%	1.3%	0.761	0.473
Mobile Telecommunications Company KSCP	0.555	0.001	0.18%	1.85	11.07	5.6%	2,402	1%	-7%	2.44	4.39	16.7%	8.3%	0.604	0.407
Ahli United Bank BSC	0.191	0.000	0.00%	1.44	8.41	6.4%	1,844	2%	-35%	3.25	16.91	17.1%	1.8%	0.311	0.160
Boubyan Bank KSCP	0.538	0.003	0.56%	2.83	26.00	1.2%	1,629	1%	-12%	0.43	0.80	10.9%	1.2%	0.638	0.380
Agility Public Warehousing Co KSCP	0.645	-0.001	-0.15%	1.12	14.23	2.8%	1,234	1%	-9%	2.30	3.54	7.9%	6.5%	0.748	0.357
Mabane Company KPSC	0.638	0.026	4.25%	1.49	12.46	1.6%	703	6%	-25%	0.47	0.75	11.9%	6.1%	0.877	0.434
Gulf Bank KSCP	0.198	0.003	1.54%	0.86	9.02	5.1%	574	4%	-35%	2.14	10.89	9.6%	1.0%	0.317	0.180
Burgan Bank KPSC	0.182	0.001	0.55%	0.63	5.63	6.3%	477	1%	-40%	0.14	0.77	11.3%	1.2%	0.358	0.175
Human Soft Holding Company KSCP	2.671	-0.009	-0.34%	4.04	9.06	6.9%	325	-2%	-11%	0.27	0.10	44.6%	33.0%	3.470	1.944
Warba Bank KSCP	0.196	0.000	0.00%	1.42	18.67	0.0%	309	1%	-25%	0.08	0.41	7.6%	0.5%	0.279	0.164
Kuwait Projects Company Holding KSCP	0.150	0.000	0.00%	0.80	9.06	6.2%	272	1%	-31%	0.16	1.08	8.9%	4.0%	0.231	0.147
Boubyan Petrochemical Company KSCP	0.555	0.010	1.83%	1.25	23.68	9.3%	280	3%	-17%	0.21	0.38	5.3%	3.1%	0.818	0.395
Qurain Petrochemical Industries Company KS	0.271	0.003	1.12%	0.66	9.83	5.6%	278	0%	-13%	0.03	0.11	6.7%	6.1%	0.350	0.163
National Industries Group Holding KPSC	0.155	-0.002	-1.27%	0.59	4.77	7.0%	221	-1%	-36%	0.35	2.26	12.3%	7.0%	0.261	0.121
Kuwait International Bank KSCP	0.167	0.000	0.00%	0.61	9.93	6.0%	170	0%	-36%	0.51	3.03	6.1%	0.6%	0.272	0.162
Mezzan Holding Company KSCP	0.581	-0.003	-0.51%	1.68	31.40	2.9%	177	0%	16%	0.13	0.22	5.3%	4.0%	0.645	0.428
Integrated Holding Co KSCC	0.380	0.001	0.26%	1.22	10.58	10.5%	84	0%	-31%	0.25	0.66	11.5%	9.6%	0.600	0.360
Total				1.52	12.70	4.0%	20,854			23.20	60.89	11.9%	1.2%		

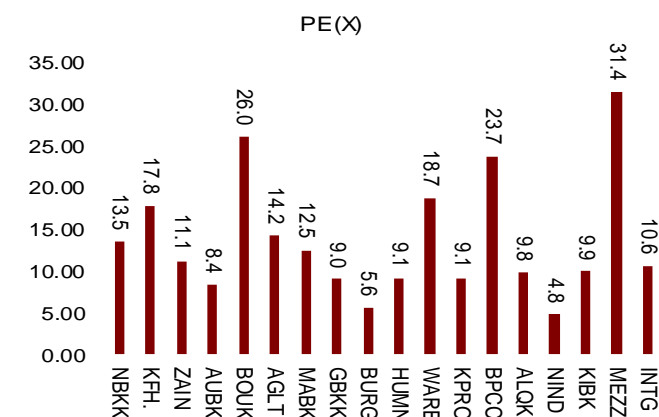
Market Cap



Price to Book Value



Price to Earning Value

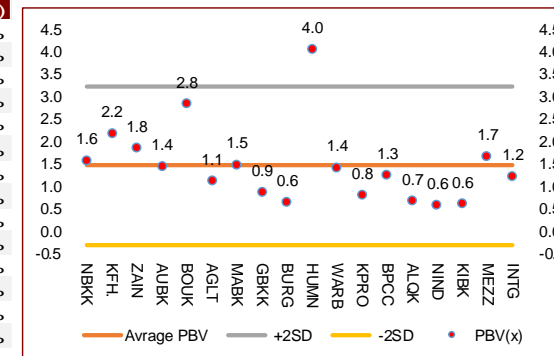


DAILY MARKET COVERAGE REPORT

NIC MENA SECURITIES - RESEARCH AND STUDIES DEP



Premier Market	Price			Valuation Multiples			MKT Cap	Price Performance		ROE	ROA
Company	Close (KD)	Day Δ	Day % Δ	PBV(X)	PE(X)	DY%	Mn KD	MTD(%)	YTD (%)	(%)	(%)
National Bank of Kuwait SAKP	0.796	-0.002	-0.25%	1.57	13.5	4.0%	5,406	1%	-22%	11.7%	1.4%
Kuwait Finance House KSC	0.588	0.004	0.68%	2.17	17.8	2.8%	4,471	2%	-20%	12.2%	1.3%
Mobile Telecommunications Company KSCP	0.555	0.001	0.18%	1.85	11.1	5.6%	2,402	1%	-7%	16.7%	8.3%
Ahli United Bank BSC	0.191	0.000	0.00%	1.44	8.4	6.4%	1,844	2%	-35%	17.1%	1.8%
Boubyan Bank KSCP	0.538	0.003	0.56%	2.83	26.0	1.2%	1,629	1%	-12%	10.9%	1.2%
Agility Public Warehousing Co KSCP	0.645	-0.001	-0.15%	1.12	14.2	2.8%	1,234	1%	-9%	7.9%	6.5%
Mabane Company KPSC	0.638	0.026	4.25%	1.49	12.5	1.6%	703	6%	-25%	11.9%	6.1%
Gulf Bank KSCP	0.198	0.003	1.54%	0.86	9.0	5.1%	574	4%	-35%	9.6%	1.0%
Burgan Bank KPSC	0.182	0.001	0.55%	0.63	5.6	6.3%	477	1%	-40%	11.3%	1.2%
Human Soft Holding Company KSCP	2.671	-0.009	-0.34%	4.04	9.1	6.9%	325	-2%	-11%	44.6%	33.0%
Warba Bank KSCP	0.196	0.000	0.00%	1.42	18.7	0.0%	309	1%	-25%	7.6%	0.5%
Kuwait Projects Company Holding KSCP	0.150	0.000	0.00%	0.80	9.1	6.2%	272	1%	-31%	8.9%	4.0%
Boubyan Petrochemical Company KSCP	0.555	0.010	1.83%	1.25	23.7	9.3%	280	3%	-17%	5.3%	3.1%
Qurain Petrochemical Industries Company KE	0.271	0.003	1.12%	0.66	9.8	5.6%	278	0%	-13%	6.7%	6.1%
National Industries Group Holding KPSC	0.155	-0.002	-1.27%	0.59	4.8	7.0%	221	-1%	-36%	12.3%	7.0%
Kuwait International Bank KSCP	0.167	0.000	0.00%	0.61	9.9	6.0%	170	0%	-36%	6.1%	0.6%
Mezzan Holding Company KSCP	0.581	-0.003	-0.51%	1.68	31.4	2.9%	177	0%	16%	5.3%	4.0%
Integrated Holding Co KSCC	0.380	0.001	0.26%	1.22	10.6	10.5%	84	0%	-31%	11.5%	9.6%
Total							20,854				



Premier Market	Price			Moving Average		RSI	MKT Cap	Price Performance		52 Week (KD)	
Discription	Close (KD)	Day Δ	Day % Δ	50 Day	200 Day	14 Day	Mn KD	MTD(%)	YTD (%)	High	Low
Premier Index	5,491	18.900	0.35%	5,494	5,971	40	20,854	-0.021	-21.28%	7,172	4,499

Top 5 Performrs (Today's Price Change)

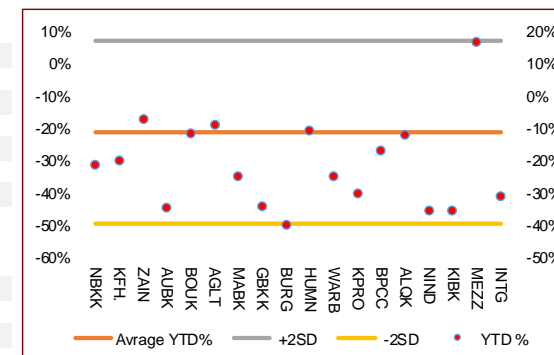
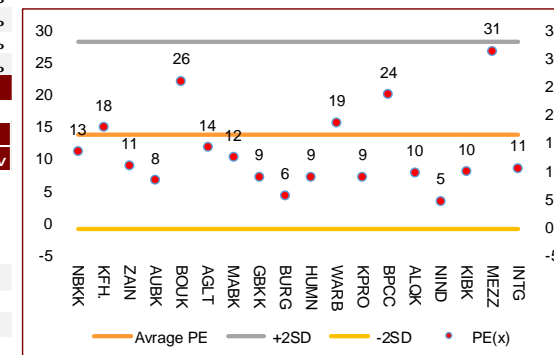
Mabane Company KPSC	0.638	0.026	4.25%	0.632	0.698	36	703	6%	-25%	0.877	0.434
Boubyan Petrochemical Company KSCP	0.555	0.010	1.83%	0.585	0.613	25	280	3%	-17%	0.818	0.395
Gulf Bank KSCP	0.198	0.003	1.54%	0.212	0.249	37	574	4%	-35%	0.317	0.180
Qurain Petrochemical Industries Company KE	0.271	0.003	1.12%	0.273	0.272	29	278	0%	-13%	0.350	0.163
Kuwait Finance House KSC	0.588	0.004	0.68%	0.603	0.638	41	4,471	2%	-20%	0.761	0.473

Middel Performrs (Today's Price Change)

Boubyan Bank KSCP	0.538	0.003	0.56%	0.518	0.536	49	1,629	1%	-12%	0.638	0.380
Burgan Bank KPSC	0.182	0.001	0.55%	0.194	0.251	32	477	1%	-40%	0.358	0.175
Integrated Holding Co KSCC	0.380	0.001	0.26%	0.402	0.466	23	84	0%	-31%	0.600	0.360
Mobile Telecommunications Company KSCP	0.555	0.001	0.18%	0.547	0.546	45	2,402	1%	-7%	0.604	0.407
Ahli United Bank BSC	0.191	0.000	0.00%	0.182	0.232	49	1,844	2%	-35%	0.311	0.160
Warba Bank KSCP	0.196	0.000	0.00%	0.204	0.227	32	309	1%	-25%	0.279	0.164
Kuwait Projects Company Holding KSCP	0.150	0.000	0.00%	0.164	0.191	35	272	1%	-31%	0.231	0.147
Kuwait International Bank KSCP	0.167	0.000	0.00%	0.175	0.219	30	170	0%	-36%	0.272	0.162

Bottom 5 Performrs (Today's Price Change)

National Industries Group Holding KPSC	0.155	-0.002	-1.27%	0.165	0.197	41	221	-1%	-36%	0.261	0.121
Mezzan Holding Company KSCP	0.581	-0.003	-0.51%	0.587	0.541	57	177	0%	16%	0.645	0.428
Human Soft Holding Company KSCP	2.671	-0.009	-0.34%	2.720	2.886	26	325	-2%	-11%	3.470	1.944
National Bank of Kuwait SAKP	0.796	-0.002	-0.25%	0.794	0.862	45	5,406	1%	-22%	1.062	0.654
Agility Public Warehousing Co KSCP	0.645	-0.001	-0.15%	0.615	0.617	36	1,234	1%	-9%	0.748	0.357



DAILY MARKET COVERAGE REPORT

NIC MENA SECURITIES - RESEARCH AND STUDIES DEP



Banking Sector	Price			Valuation Multiples			MKT Cap	Price Performance		Trading Indicators		ROE	ROA	52 Week (KD)	
	Company	Close (KD)	Day Δ	Day % Δ	PBV(X)	PE(X)		DY%	Mn KD	MTD(%)	YTD (%)			Value (Mn KD)	(Mn Shrs)
National Bank of Kuwait SAKP	0.796	-0.002	-0.25%	1.57	13.47	4.0%	5,406	1%	-22%	5.46	6.82	11.7%	1.4%	1.062	0.654
Kuwait Finance House KSC	0.588	0.004	0.68%	2.17	17.81	2.8%	4,471	2%	-20%	4.60	7.78	12.2%	1.3%	0.761	0.473
Ahli United Bank BSC	0.191	0.000	0.00%	1.44	8.41	6.4%	1,844	2%	-35%	3.25	16.91	17.1%	1.8%	0.311	0.160
Boubyan Bank KSCP	0.538	0.003	0.56%	2.83	26.00	1.2%	1,629	1%	-12%	0.43	0.80	10.9%	1.2%	0.638	0.380
Commercial Bank of Kuwait KPSC	0.500	0.000	0.00%	1.32	0.00	3.7%	967	0%	-5%	0.00	0.00	0.0%	0.0%	0.555	0.465
Gulf Bank KSCP	0.198	0.003	1.54%	0.86	9.02	5.1%	574	4%	-35%	2.14	10.89	9.6%	1.0%	0.317	0.180
Burgan Bank KPSC	0.182	0.001	0.55%	0.63	5.63	6.3%	477	1%	-40%	0.14	0.77	11.3%	1.2%	0.358	0.175
Ahli United Bank KSCP	0.246	0.000	0.00%	1.05	8.72	5.5%	480	0%	-24%	0.00	0.00	12.1%	1.3%	0.342	0.225
Warba Bank KSCP	0.196	0.000	0.00%	1.42	18.67	0.0%	309	1%	-25%	0.08	0.41	7.6%	0.5%	0.279	0.164
Al Ahli Bank of Kuwait KSCP	0.166	0.000	0.00%	0.48	9.30	8.4%	267	0%	-35%	0.00	0.02	5.1%	0.6%	0.339	0.156
Kuwait International Bank KSCP	0.167	0.000	0.00%	0.61	9.93	6.0%	170	0%	-36%	0.51	3.03	6.1%	0.6%	0.272	0.162
Ithmaar Holding BSC	0.022	0.000	0.00%	0.08	323.35	0.0%	65	0%	0%	0.00	0.00	0.0%	0.0%	0.022	0.022
Total Banking Sector - 12 Companies				1.41	13.88	3.8%	16,657			16.6	47.4	10.13%	1.18%		

Basic materials	Price			Valuation Multiples			MKT Cap	Price Performance		Trading Indicators		ROE	ROA	52 Week (KD)	
	Company	Close (KD)	Day Δ	Day % Δ	PBV(X)	PE(X)		DY%	Mn KD	MTD(%)	YTD (%)			Value (Mn KD)	(Mn Shrs)
Boubyan Petrochemical Company KSCP	0.555	0.010	1.83%	1.25	23.7	9.3%	280	3%	-17%	0.21	0.38	5.3%	3.1%	0.818	0.395
Qurain Petrochemical Industries Company KS	0.271	0.003	1.12%	0.66	9.8	5.6%	278	0%	-13%	0.03	0.11	6.7%	6.1%	0.350	0.163
Al Kout Industrial Projects Company KPSC	0.769	0.000	0.00%	2.50	16.2	6.5%	78	0%	-10%	0.00	0.00	15.4%	13.9%	0.850	0.769
Kuwait Foundry Company KPSC	0.235	0.005	2.17%	0.79	19.0	22.7%	17	4%	-30%	0.00	0.00	4.1%	2.3%	0.564	0.192
Total Basic materials - 4 Companies				0.94	14.26	7.8%	652			0.24	0.48	6.57%	5.07%		

Consumer goods	Price			Valuation Multiples			MKT Cap	Price Performance		Trading Indicators		ROE	ROA	52 Week (KD)	
	Company	Close (KD)	Day Δ	Day % Δ	PBV(X)	PE(X)		DY%	Mn KD	MTD(%)	YTD (%)			Value (Mn KD)	(Mn Shrs)
Mezzan Holding Company KSCP	0.581	-0.003	-0.51%	1.68	31.4	2.9%	177	0%	16%	0.13	0.22	5.3%	4.0%	0.645	0.428
Livestock Transport and Trading Co KPSC	0.181	-0.003	-1.63%	0.94	32.3	0.1%	38	-2%	3%	0.01	0.04	2.9%	2.6%	0.200	0.152
Danah Al Safat Foodstuff Co KPSC	0.012	0.000	0.00%	0.25	-0.3	0.1%	1	0%	-25%	0.00	0.00	-84.8%	-88.3%	0.029	0.010
Total Basic materials - 3 Companies				1.43	87.55	2.4%	216			0.13	0.25	1.64%	0.90%		

DAILY MARKET COVERAGE REPORT

NIC MENA SECURITIES - RESEARCH AND STUDIES DEP



Consumer services	Price			Valuation Multiples			MKT Cap	Price Performance		Trading Indicators		ROE	ROA	52 Week (KD)	
Company	Close (KD)	Day Δ	Day % Δ	PBV(X)	PE(X)	DY%	Mn KD	MTD(%)	YTD (%)	Value (Mn KD)	(Mn Shrs)	(%)	(%)	High	Low
Jazeera Airways Co KSCP	0.601	0.001	0.17%	2.99	8.0	5.8%	120	-3%	-45%	0.05	0.08	37.1%	9.3%	1.110	0.372
Kuwait National Cinema Comapany KPSC	0.750	0.000	0.00%	0.86	8.1	6.4%	70	0%	-28%	0.00	0.00	10.6%	8.5%	1.050	0.655
Al Soor Fuel Marketing Company KSCP	0.107	-0.001	-0.93%	0.65	12.4	4.7%	43	-3%	-14%	0.00	0.02	5.3%	3.9%	0.129	0.096
Oula Fuel Marketing Co KSCP	0.107	-0.001	-0.93%	0.64	11.2	5.5%	43	-3%	-16%	0.00	0.00	5.7%	3.9%	0.134	0.095
Sultan Center Food Products Company KSCP	0.053	-0.001	-1.67%	0.66	13.4	0.0%	30	-2%	2%	0.00	0.09	4.9%	3.8%	0.060	0.036
IFA Hotels and Resorts Co KSCP	0.023	0.000	0.88%	0.82	-0.6	0.0%	14	1%	-58%	0.00	0.06	-131.5%	-4.7%	0.063	0.021
Jiyad Holding Co KSCP	0.032	0.000	0.00%	0.29	6.4	0.0%	11	0%	-18%	0.00	0.00	4.5%	3.7%	0.047	0.029
Kuwait Resorts Company KPSC	0.046	0.000	-0.43%	0.32	8.4	0.0%	9	-1%	-25%	0.04	0.82	3.8%	3.8%	0.064	0.040
Future Kid Entertainment and Real Estate Co	0.089	0.000	0.00%	0.54	35.1	12.4%	10	1%	1%	0.00	0.00	1.5%	2.6%	0.110	0.069
Al Eid Food Company KSCP	0.085	0.000	0.00%	0.48	5.7	0.0%	9	-4%	8%	0.00	0.00	8.4%	8.4%	0.096	0.046
Alrai Media Group Co KSCP	0.037	0.000	0.00%	0.83	-2.4	0.0%	9	0%	-2%	0.00	0.00	-34.2%	-19.3%	0.049	0.029
Kuwait Hotels Co KPSC	0.101	0.000	0.00%	1.42	-5.8	0.0%	6	21%	1%	0.00	0.00	-24.4%	-13.2%	0.101	0.069
Palms Agro Production Co KSCP	0.060	0.000	0.00%	0.51	-42.3	16.6%	3	0%	49%	0.00	0.00	-1.2%	0.2%	0.060	0.025
Kuwait Cable Vision Company KPSC	0.014	0.000	0.00%	0.52	-11.6	0.0%	1	0%	0%	0.00	0.00	-4.5%	-3.0%	0.027	0.012
Total Consumer services - 14 Companies				0.85	35.76	4.7%	377			0.09	1.07	2.38%	2.72%		

Financial services	Price			Valuation Multiples			MKT Cap	Price Performance		Trading Indicators		ROE	ROA	52 Week (KD)	
Company	Close (KD)	Day Δ	Day % Δ	PBV(X)	PE(X)	DY%	Mn KD	MTD(%)	YTD (%)	Value (Mn KD)	(Mn Shrs)	(%)	(%)	High	Low
Egypt Kuwait Holding Co SAE	0.357	0.000	0.00%	2.12	12.1	5.5%	366	-5%	-21%	0.00	0.00	17.6%	12.6%	0.500	0.318
Kuwait Projects Company Holding KSCP	0.150	0.000	0.00%	0.80	9.1	6.2%	272	1%	-31%	0.16	1.08	8.9%	4.0%	0.231	0.147
National Industries Group Holding KPSC	0.155	-0.002	-1.27%	0.59	4.8	7.0%	221	-1%	-36%	0.35	2.26	12.3%	7.0%	0.261	0.121
GFH Financial Group BSC	0.048	0.000	0.00%	0.57	7.1	5.5%	176	1%	-31%	0.00	0.00	8.0%	1.1%	0.075	0.042
Alimtiiaz Investment Group Co KSCP	0.088	0.000	-0.34%	0.44	4.8	8.6%	95	1%	-30%	0.03	0.34	9.1%	6.1%	0.141	0.071
Commercial Facilities Co SAKP	0.189	-0.001	-0.53%	0.59	7.3	8.9%	96	-1%	-13%	0.00	0.00	8.0%	4.4%	0.235	0.179
National Investments Co KSCP	0.101	-0.001	-0.98%	0.45	7.5	8.0%	81	-1%	-27%	0.03	0.35	5.9%	5.7%	0.155	0.080
Tamdeen Investment Co KSCP	0.250	0.000	0.00%	0.31	10.4	4.8%	85	0%	-28%	0.01	0.03	3.0%	3.3%	0.400	0.199
Kuwait Investment Company KPSC	0.105	-0.001	-0.94%	0.46	3.3	9.6%	58	-2%	-30%	0.01	0.11	13.9%	7.8%	0.172	0.095
Noor Financial Investment Co KPSC	0.138	-0.003	-2.13%	0.86	6.9	3.5%	56	0%	16%	0.00	0.02	12.5%	10.1%	0.184	0.076

DAILY MARKET COVERAGE REPORT

NIC MENA SECURITIES - RESEARCH AND STUDIES DEP



Financial services	Price			Valuation Multiples			MKT Cap	Price Performance		Trading Indicators		ROE	ROA	52 Week (KD)	
Company	Close (KD)	Day Δ	Day % Δ	PBV(X)	PE(X)	DY%	Mn KD	MTD(%)	YTD (%)	Value (Mn KD)	(Mn Shrs)	(%)	(%)	High	Low
Al Bareeq Holding KSCP	0.105	0.000	0.00%	1.10	21.0	0.0%	46	0%	5%	0.00	0.00	5.2%	5.1%	0.110	0.100
Kuwait Financial Centre KPSC	0.073	0.000	0.00%	0.37	5.0	6.8%	35	0%	-31%	0.00	0.01	7.3%	5.1%	0.121	0.070
Aayan Leasing and Investment Co KSCP	0.044	0.000	0.68%	0.52	-2.4	4.1%	35	3%	-6%	0.07	1.48	-21.4%	-4.4%	0.066	0.032
Arabi Group Holdings KSCP	0.198	0.000	0.00%	1.07	-19.9	0.0%	33	0%	-28%	0.00	0.00	-5.4%	3.6%	0.337	0.074
Arzan Financial Group for Financing and Invest	0.039	0.000	1.03%	0.32	28.4	0.0%	31	1%	65%	0.08	2.02	1.1%	2.3%	0.047	0.022
Privatization Holding Co KPSC	0.040	-0.002	-4.53%	0.29	-36.1	0.0%	24	-6%	-19%	0.00	0.11	-0.8%	0.8%	0.059	0.037
Asiya Capital Investments Company KSCP	0.030	0.000	0.00%	0.33	15.6	0.2%	24	0%	-26%	0.00	0.00	2.1%	2.1%	0.041	0.029
KAMCO Investment Co KSCP	0.070	-0.002	-2.64%	0.42	7.9	0.0%	24	-2%	-23%	0.01	0.12	5.4%	5.9%	0.111	0.060
Kuwait and Middle East Financial Investment (0.093	0.001	1.09%	1.51	37.1	0.0%	24	-1%	4%	0.09	1.01	4.1%	4.3%	0.108	0.052
Umm Al Qaiwain General Investment Co PSC	0.067	0.000	0.00%	0.45	12.5	5.5%	24	0%	0%	0.00	0.00	3.6%	3.3%	0.087	0.052
Securities House KSCP	0.039	0.000	-1.02%	0.53	-56.7	0.0%	22	0%	-15%	0.04	1.03	-0.9%	1.4%	0.050	0.027
Gulf Investment House KSCP	0.056	-0.002	-2.94%	0.63	104.0	0.0%	23	4%	-11%	0.02	0.39	0.6%	0.5%	0.078	0.038
Coast Investment and Development Co KSCP	0.031	0.000	0.00%	0.33	31.3	0.0%	18	3%	-21%	0.00	0.04	1.1%	1.1%	0.045	0.026
Bayan Investment Co KSCP	0.049	0.000	0.00%	0.49	-25.1	0.0%	18	-1%	27%	0.00	0.00	-1.9%	-0.9%	0.053	0.031
First Investment Co KSCP	0.028	0.001	3.66%	0.44	-0.4	0.0%	18	1%	-18%	0.09	3.17	-113.6%	63.0%	0.045	0.022
Al Madar Finance and Investment Co KSCP	0.078	-0.001	-1.02%	0.71	11.6	0.0%	16	-2%	-16%	0.00	0.03	6.1%	3.0%	0.148	0.062
Inoest BSC Public	0.059	0.001	0.86%	0.41	7.8	10.1%	17	0%	-8%	0.00	0.04	5.2%	2.7%	0.070	0.044
Al Manar Financing and Leasing Co KSCC	0.049	0.000	0.00%	0.44	12.5	1.1%	15	0%	-6%	0.00	0.00	3.5%	2.8%	0.060	0.037
Osoul Investment Co KSCP	0.083	0.001	1.59%	0.59	6.6	0.0%	12	2%	11%	0.01	0.10	9.0%	8.7%	0.121	0.059
National International Holding Co KSCP	0.068	0.000	0.00%	0.34	7.8	4.5%	14	0%	-11%	0.00	0.00	4.4%	4.7%	0.085	0.051
Kuwait Finance and Investment Company KSC	0.044	0.000	0.00%	0.35	19.7	0.0%	14	0%	-11%	0.00	0.00	1.8%	2.3%	0.058	0.038
Manazel Holding Co KPSC	0.029	0.000	-1.04%	0.63	18.4	0.0%	12	-1%	-27%	0.01	0.28	3.4%	1.2%	0.048	0.021
Amar Finance and Leasing Company KSCP	0.047	0.000	0.00%	0.53	39.6	0.0%	9	-5%	24%	0.00	0.00	1.3%	1.3%	0.066	0.028
UniCap Investment and Finance Co KSCP	0.038	0.001	2.16%	0.38	-18.9	0.0%	9	5%	-31%	0.00	0.01	-2.0%	0.3%	0.057	0.035
Gulf North Africa Holding Co KPSC	0.056	0.001	0.91%	0.74	71.5	0.0%	8	3%	-10%	0.00	0.03	1.0%	2.5%	0.062	0.052
International Financial Advisors KPSC	0.030	0.000	-0.33%	0.91	-0.4	2.1%	8	3%	-43%	0.01	0.19	-222.8%	-17.0%	0.060	0.027
Kuwait Syrian Holding Co KSCP	0.034	-0.005	-13.67%	0.29	-17.4	0.0%	6	-14%	8%	0.00	0.00	-1.7%	-1.1%	0.044	0.022
Amwal International Investment Company KSC	0.038	0.000	0.00%	0.71	14.0	0.0%	7	0%	27%	0.00	0.00	5.0%	6.3%	0.056	0.030
Al Salam Group Holding Co KSCP	0.021	0.000	0.00%	0.18	157.0	0.0%	6	2%	-29%	0.01	0.39	0.1%	0.1%	0.039	0.018
Warba Capital Holding Co KSC	0.047	-0.007	-12.96%	0.52	-7.5	0.0%	5	-13%	-27%	0.01	0.25	-7.0%	-5.0%	0.120	0.045
Credit Rating and Collection Company KSCP	0.035	0.000	0.00%	1.08	-23.7	0.0%	6	0%	76%	0.00	0.00	-4.6%	-4.3%	0.037	0.015
National Consumer Holding Company KSCP	0.055	0.000	0.00%	0.61	269.6	0.0%	5	0%	0%	0.00	0.00	0.2%	0.3%	0.100	0.010
Al Madina for Finance and Investment Co KSC	0.011	0.000	1.87%	0.37	-2.1	0.0%	4	6%	-27%	0.00	0.35	-17.9%	-7.7%	0.019	0.009
Ekttitab Holding Co KSCP	0.014	0.000	-2.78%	0.34	-9.9	0.0%	4	3%	-7%	0.01	0.67	-3.4%	-3.0%	0.019	0.010
Al Deera Holding Co KPSC	0.017	0.000	-0.59%	0.74	-9.5	0.0%	3	-1%	-15%	0.00	0.10	-7.7%	-2.2%	0.022	0.011
Al Mal Investment Company KPSC	0.009	0.000	0.00%	0.41	-0.9	0.0%	3	3%	-6%	0.00	0.37	-47.6%	-23.1%	0.016	0.008
Gulf Franchising Holding Co KSCP	0.065	0.000	0.00%	1.01	-2.8	0.0%	3	0%	-14%	0.00	0.00	-36.2%	-10.8%	0.160	0.001
Tamkeen Holding KSCC	0.005	0.000	0.00%	0.05	-7.2	0.0%	0	0%	0%	0.00	0.00	-0.7%	-0.7%	0.007	0.005
Total Financial services - 48 Companies				0.60	14.43	5.0%	2,090			1.07	16.36	4.18%	4.11%		

DAILY MARKET COVERAGE REPORT

NIC MENA SECURITIES - RESEARCH AND STUDIES DEP



Health care	Price			Valuation Multiples			MKT Cap	Price Performance		Trading Indicators		ROE	ROA	52 Week (KD)	
Company	Close (KD)	Day Δ	Day % Δ	PBV(X)	PE(X)	DY%	Mn KD	MTD(%)	YTD (%)	Value (Mn KD)	(Mn Shrs)	(%)	(%)	High	Low
Al-Maidan Clinic for Oral Health Services Com	1.220	0.000	0.00%	7.90	47.8	0.6%	305	0%	0%	0.00	0.00	16.5%	11.6%	1.240	1.220
Advanced Technology Co KSCP	0.660	0.000	0.00%	1.72	53.7	2.3%	99	0%	-19%	0.00	0.00	3.2%	3.5%	1.000	0.580
Yiaco Medical Company KPSC	0.707	0.000	0.00%	6.06	52.7	0.0%	12	0%	0%	0.00	0.00	11.5%	3.1%	0.707	0.707
Total Health care - 3 Companies				4.24	49.21	1.0%	416			0.00	0.00	8.61%	4.68%		

Industrials	Price			Valuation Multiples			MKT Cap	Price Performance		Trading Indicators		ROE	ROA	52 Week (KD)	
Company	Close (KD)	Day Δ	Day % Δ	PBV(X)	PE(X)	DY%	Mn KD	MTD(%)	YTD (%)	Value (Mn KD)	(Mn Shrs)	(%)	(%)	High	Low
Agility Public Warehousing Co KSCP	0.645	-0.001	-0.15%	1.12	14.2	2.8%	1,234	1%	-9%	2.30	3.54	7.9%	6.5%	0.748	0.357
Human Soft Holding Company KSCP	2.671	-0.009	-0.34%	4.04	9.1	6.9%	325	-2%	-11%	0.27	0.10	44.6%	33.0%	3.470	1.944
ALAFCO Aviation Lease and Finance Compan	0.154	0.001	0.65%	0.46	8.3	6.5%	147	1%	-43%	0.39	2.55	5.5%	3.7%	0.283	0.138
Kuwait Cement Co KSCP	0.166	0.001	0.61%	0.57	29.5	8.9%	118	1%	-33%	0.10	0.61	1.9%	2.3%	0.285	0.144
Gulf Cable and Electrical Industries Co KPSC	0.578	0.008	1.40%	0.69	28.7	4.7%	121	2%	18%	0.21	0.37	2.4%	2.7%	0.611	0.390
Integrated Holding Co KSCC	0.380	0.001	0.26%	1.22	10.6	10.5%	84	0%	-31%	0.25	0.66	11.5%	9.6%	0.600	0.360
Kuwait Portland Cement Co KPSC	0.734	0.005	0.69%	0.99	9.7	13.4%	74	4%	-25%	0.00	0.00	10.2%	8.8%	1.215	0.683
United Projects for Aviation Services Co KSCF	0.465	0.000	0.00%	0.98	8.0	4.5%	74	0%	-9%	0.00	0.00	12.3%	9.1%	0.512	0.367
Heavy Engineering Industries and Shipbuilding	0.352	0.002	0.57%	1.02	5.7	8.3%	63	1%	-13%	0.02	0.05	18.0%	7.1%	0.419	0.298
Educational Holding Group KSCP	0.290	0.000	0.00%	1.68	9.2	5.2%	71	0%	-34%	0.00	0.00	18.3%	17.8%	0.475	0.228
National Industries Company KPSC	0.162	0.000	0.00%	0.69	13.5	6.0%	58	0%	-2%	0.00	0.00	5.1%	7.8%	0.183	0.143
ACICO Industries Company KSCP	0.097	-0.002	-2.02%	0.31	12.7	5.1%	32	-1%	-24%	0.00	0.00	2.5%	2.8%	0.146	0.081
Kuwait Company for Process Plant Constructi	0.290	0.010	3.57%	1.15	6.2	6.2%	31	2%	20%	0.14	0.48	18.5%	8.4%	0.337	0.173
Ras Al Khaimah for White Cement and Constr	0.065	0.000	0.00%	0.51	19.9	8.4%	33	0%	0%	0.00	0.00	2.6%	4.7%	0.080	0.053
Gulf Cement Co PSC	0.038	0.000	0.00%	0.38	-13.9	10.9%	31	0%	-31%	0.00	0.00	-2.7%	-2.0%	0.063	0.032
Combined Group Contracting Company KSCP	0.168	0.004	2.44%	0.58	7.6	12.2%	27	3%	-36%	0.11	0.65	7.7%	3.0%	0.264	0.150
Sharjah Cement and Industrial Development C	0.042	0.000	0.00%	0.21	25.3	12.4%	26	0%	0%	0.00	0.00	0.8%	1.2%	0.068	0.042
KGL Logistics Company KPSC	0.025	0.001	2.04%	0.19	4.1	0.1%	19	6%	-33%	0.06	2.20	4.6%	3.7%	0.043	0.023
Fujairah Cement Industries Co PSC	0.030	0.000	0.00%	0.12	14.5	14.0%	11	0%	-33%	0.01	0.27	0.8%	2.3%	0.055	0.030
Shuaiba Industrial Company KPSC	0.124	0.000	0.00%	0.70	38.5	8.0%	12	0%	-20%	0.00	0.00	1.8%	2.0%	0.180	0.122
Kuwait and Gulf Link Transport Company KPS	0.047	0.000	-0.85%	0.19	14.1	0.0%	13	-1%	-30%	0.00	0.04	1.4%	2.2%	0.081	0.042
National Cleaning Co KSCP	0.051	-0.001	-1.73%	0.33	7.4	9.1%	12	-2%	-26%	0.02	0.30	4.4%	2.3%	0.088	0.047
Mubarrad Holding Co KSCP	0.054	-0.003	-4.59%	0.43	8.7	8.7%	9	-3%	-38%	0.00	0.01	4.9%	5.1%	0.089	0.049
Specialities Group Holding Company KPSC	0.067	0.001	2.14%	0.33	7.2	0.0%	10	1%	-21%	0.00	0.01	4.5%	7.1%	0.086	0.055
Hilal Cement Company KSCP	0.068	0.000	-0.15%	0.60	-5.6	21.9%	7	0%	-32%	0.00	0.01	-10.6%	-5.3%	0.100	0.063
National Ranges Co KPSC	0.016	0.000	-2.41%	0.29	-1.2	0.0%	5	7%	62%	0.00	0.31	-24.9%	-4.2%	0.018	0.007
Metal and Recycling Co KSCP	0.043	-0.002	-4.84%	0.36	-1.8	0.0%	4	-5%	-13%	0.00	0.00	-19.7%	-7.2%	0.070	0.020
Salbookh Trading Co KSCP	0.031	0.001	4.03%	0.42	-1.8	0.0%	3	3%	-38%	0.00	0.07	-23.2%	-15.3%	0.051	0.026
Equipment Holding Co KSCP	0.014	0.000	0.00%	0.27	-155.9	0.0%	2	0%	-38%	0.00	0.00	-0.2%	0.4%	0.024	0.013
Total Industrials - 29 Companies				0.84	12.65	5.3%	2,655			3.88	12.25	6.67%	5.05%		

DAILY MARKET COVERAGE REPORT

NIC MENA SECURITIES - RESEARCH AND STUDIES DEP



Insurance	Price			Valuation Multiples			MKT Cap	Price Performance		Trading Indicators		ROE	ROA	52 Week (KD)		
	Company	Close (KD)	Day Δ	Day % Δ	PBV(X)	PE(X)		DY%	Mn KD	MTD(%)	YTD (%)			Value (Mn KD)	(Mn Shrs)	(%)
Gulf Insurance Group KSCP	0.556	0.000	0.00%	0.91	7.5	6.9%	100	0%	-16%	0.00	0.00	12.3%	3.0%	0.687	0.556	
Al Ahleia Insurance Co SAKP	0.415	0.000	0.00%	0.75	8.0	8.5%	82	0%	-3%	0.00	0.00	9.4%	3.7%	0.445	0.385	
Kuwait Insurance Company SAKP	0.342	-0.032	-8.56%	0.56	6.6	7.0%	63	1%	4%	0.01	0.02	8.5%	4.9%	0.387	0.298	
Kuwait Reinsurance Company KSCP	0.188	0.000	0.00%	0.71	8.0	2.3%	38	0%	36%	0.00	0.00	8.9%	3.4%	0.188	0.126	
Bahrain Kuwait Insurance Co BSC	0.200	0.000	0.00%	0.93	12.9	6.1%	28	0%	0%	0.00	0.00	7.2%	0.9%	0.200	0.200	
Warba Insurance Company KSCP	0.079	0.000	0.00%	0.34	11.0	0.0%	13	0%	28%	0.00	0.00	3.1%	1.0%	0.096	0.053	
First Takaful Insurance Co KPSC	0.040	0.000	0.00%	0.49	5.1	0.0%	4	0%	5%	0.00	0.00	9.6%	6.3%	0.056	0.031	
Wethaq Takaful Insurance Co KCSP	0.024	-0.001	-4.71%	0.22	-30.8	0.0%	3	-4%	-3%	0.01	0.23	-0.7%	-0.7%	0.035	0.018	
Total Insurance - 8 Companies				0.70	7.87	6.3%	331				0.01	0.25	8.86%	3.00%		

Oil and Gas	Price			Valuation Multiples			MKT Cap	Price Performance		Trading Indicators		ROE	ROA	52 Week (KD)		
	Company	Close (KD)	Day Δ	Day % Δ	PBV(X)	PE(X)		DY%	Mn KD	MTD(%)	YTD (%)			Value (Mn KD)	(Mn Shrs)	(%)
Burgan for Well Drilling Trading and Maintenan	0.070	0.000	0.00%	0.25	7.1	0.0%	16	0%	-13%	0.00	0.00	3.6%	3.2%	0.098	0.062	
Energy House Holding Company KSCP	0.021	0.000	0.00%	0.65	-2.9	0.0%	16	-5%	-8%	0.00	0.00	-22.5%	-15.6%	0.036	0.014	
Gulf Petroleum Investment Company KSCP	0.016	0.001	7.33%	0.18	-5.2	0.0%	7	8%	-21%	0.13	8.26	-3.4%	-2.2%	0.025	0.012	
Independent Petroleum Group KSCP	0.380	0.000	0.00%	0.70	10.4	7.9%	69	0%	-21%	0.00	0.00	6.8%	2.2%	0.497	0.375	
National Petroleum Services Company KSCP	1.020	-0.109	-9.65%	2.43	8.7	6.9%	99	-10%	-13%	0.00	0.00	27.9%	25.2%	1.389	0.903	
Senegy Holding Company KSCP	0.016	-0.001	-5.81%	0.32	-0.7	0.0%	3	-4%	-26%	0.04	2.21	-47.9%	-28.9%	0.027	0.014	
Total Oil and Gas - 6 Companies				0.76	24.38	5.8%	210				0.17	10.47	3.10%	2.18%		

Real estate	Price			Valuation Multiples			MKT Cap	Price Performance		Trading Indicators		ROE	ROA	52 Week (KD)	
	Company	Close (KD)	Day Δ	Day % Δ	PBV(X)	PE(X)		DY%	Mn KD	MTD(%)	YTD (%)			Value (Mn KD)	(Mn Shrs)
Mabane Company KPSC	0.638	0.026	4.25%	1.49	12.5	1.6%	703	6%	-25%	0.47	0.75	11.9%	6.1%	0.877	0.434
Salhia Real Estate Co KSCP	0.401	0.000	0.00%	1.21	9.2	5.0%	198	1%	-4%	0.05	0.13	13.2%	6.2%	0.460	0.324
Commercial Real Estate Co KPSC	0.091	0.000	0.00%	0.56	11.3	6.3%	164	-3%	-1%	0.00	0.00	5.0%	3.8%	0.103	0.083
Tamdeen Real Estate Co KPSC	0.251	0.000	0.00%	0.38	12.7	3.9%	105	-3%	-22%	0.00	0.00	3.0%	2.3%	0.343	0.248
National Real Estate Co KSCP	0.074	0.000	0.00%	0.39	9.2	0.0%	105	1%	-20%	0.06	0.81	4.2%	2.3%	0.095	0.060
Kuwait Real Estate Company KPSC	0.082	0.000	-0.12%	0.55	10.0	0.5%	71	0%	-22%	0.00	0.05	5.5%	5.9%	0.115	0.070
United Real Estate Company SAKP	0.050	0.000	0.00%	0.29	-7.4	0.0%	53	0%	-19%	0.00	0.00	-3.9%	1.4%	0.065	0.049

DAILY MARKET COVERAGE REPORT

NIC MENA SECURITIES - RESEARCH AND STUDIES DEP



Real estate Company	Price			Valuation Multiples			MKT Cap	Price Performance		Trading Indicators		ROE	ROA	52 Week (KD)	
	Close (KD)	Day Δ	Day % Δ	PBV(X)	PE(X)	DY%	Mn KD	MTD(%)	YTD (%)	Value (Mn KD)	(Mn Shrs)	(%)	(%)	High	Low
First Dubai for Real Estate Development Co KSC	0.035	-0.001	-1.40%	0.47	38.5	1.1%	35	-1%	-1%	0.00	0.12	1.2%	2.1%	0.055	0.026
Al Mazaya Holding Company KSCP	0.050	0.001	2.04%	0.39	-3.6	0.1%	31	2%	-16%	0.00	0.08	-11.0%	-0.9%	0.067	0.047
Dar Al Thuraya Real Estate Co KPSC	0.117	-0.028	-19.31%	1.11	30.8	0.0%	17	-16%	67%	0.00	0.02	3.6%	-1.2%	0.190	0.040
Injazzat Real Estate Development Company K	0.080	0.000	0.00%	0.51	-3.8	8.6%	27	0%	0%	0.00	0.00	-13.4%	-6.9%	0.091	0.061
Ajjal Real Estate Entertainment Co KSCP	0.134	0.000	0.00%	0.20	12.3	0.0%	25	-1%	-26%	0.01	0.04	1.6%	1.9%	0.224	0.121
Arkan Al Kuwait Real Estate Company KSCP	0.084	0.000	0.00%	0.59	9.0	9.4%	21	0%	-6%	0.00	0.00	6.6%	7.1%	0.100	0.076
Al Argan International Real Estate Co KSCP	0.081	-0.007	-8.00%	0.23	26.1	6.1%	21	1%	-23%	0.00	0.01	0.9%	2.8%	0.144	0.060
Al-Enmaa Real Estate Company KSCP	0.039	0.001	3.17%	0.39	10.3	0.0%	18	4%	-38%	0.01	0.31	3.8%	2.5%	0.079	0.037
Aayan Real Estate Company KSCP	0.052	0.000	-0.77%	0.29	9.6	9.7%	20	-1%	-30%	0.00	0.00	3.0%	2.8%	0.080	0.048
Dalqan Real Estate Company KSCP	0.350	0.000	0.00%	2.91	59.0	0.0%	19	0%	0%	0.00	0.00	4.9%	5.1%	0.350	0.350
Kuwait Business Town Real Estate Co KSCP	0.028	-0.001	-2.14%	0.25	7.0	0.3%	17	-2%	-37%	0.01	0.36	3.6%	2.8%	0.046	0.027
Tijara and Realestate Investment Company KS	0.041	0.000	0.00%	0.38	10.8	4.8%	15	0%	-18%	0.00	0.00	3.6%	5.0%	0.055	0.034
Munshaat Real Estate Projects Co KSCP	0.050	-0.002	-3.85%	0.34	18.4	4.2%	16	-4%	-32%	0.00	0.02	1.8%	-1.2%	0.086	0.047
Aqar Real Estate Investments Co KSCP	0.064	-0.011	-14.19%	0.46	5.3	7.8%	13	-18%	-21%	0.00	0.05	8.7%	9.3%	0.089	0.062
Sokouk Holding Co KSCP	0.024	0.000	-1.67%	0.29	-3.9	0.0%	13	-2%	-33%	0.00	0.00	-7.4%	4.1%	0.040	0.022
Al-Arabiya Real Estate Co KSCP	0.023	0.000	1.32%	0.20	7.0	2.7%	12	3%	-22%	0.00	0.22	2.9%	12.0%	0.033	0.020
Mashaer Holding Co KSCP	0.060	0.000	0.00%	0.46	6.4	0.0%	11	0%	-23%	0.00	0.00	7.1%	5.5%	0.086	0.048
Osos Holding Group Co KSCP	0.096	-0.002	-1.54%	0.76	7.2	9.9%	10	-2%	-4%	0.00	0.00	10.5%	7.3%	0.118	0.089
Abyaar Real Estate Development Company KSC	0.007	0.000	-1.49%	0.19	-0.5	0.0%	7	-4%	-17%	0.00	0.56	-40.9%	-12.3%	0.015	0.005
Ream Real Estate Company KSCP	0.065	0.000	0.00%	0.49	-2.6	3.4%	7	0%	-27%	0.00	0.00	-19.0%	-10.1%	0.140	0.060
Investors Holding Group Company KSCP	0.013	0.000	-1.54%	0.65	-0.6	0.0%	8	-1%	63%	0.00	0.30	-106.5%	0.0%	0.017	0.007
Al Massaleh Real Estate Co KSCP	0.030	0.001	1.72%	0.33	-4.1	0.0%	7	5%	-20%	0.00	0.00	-8.1%	-2.3%	0.040	0.026
Kuwait Real Estate Holding Co KPSC	0.027	0.000	0.00%	0.04	0.7	6.6%	5	0%	-6%	0.00	0.00	5.5%	2.3%	0.034	0.023
Kuwait Remal Real Estate Co KPSC	0.014	-0.001	-3.57%	0.20	-1.9	0.0%	4	-4%	-45%	0.01	0.46	-11.0%	3.1%	0.029	0.013
Real Estate Trade Centers Company KPSC	0.026	0.001	2.77%	0.14	149.4	0.0%	3	0%	12%	0.00	0.02	0.1%	0.1%	0.050	0.018
Taameer Real Estate Investment Co KSCP	0.018	0.000	-1.12%	0.27	-3.9	0.0%	4	-1%	-33%	0.00	0.07	-7.0%	-5.4%	0.034	0.013
Al Masaken International Real Estate Developr	0.038	0.000	0.00%	0.42	46.3	0.4%	4	0%	-13%	0.00	0.00	0.9%	1.2%	0.074	0.027
Mena Real Estate Co KSCP	0.025	0.000	-0.40%	0.17	-55.3	0.0%	3	2%	-40%	0.00	0.03	-0.3%	-0.1%	0.043	0.021
Sanam Real Estate Company KSCP	0.028	-0.001	-4.70%	0.36	38.5	0.0%	3	-5%	-29%	0.00	0.01	0.9%	0.9%	0.045	0.027
Ajwan Gulf Real Estate Co KSCP	0.011	0.000	0.89%	0.20	-8.1	0.0%	2	-1%	-27%	0.00	0.35	-2.5%	-2.2%	0.016	0.009
Effect Real Estate Company KPSC	0.021	0.000	0.00%	0.29	-8.9	4.9%	2	0%	0%	0.00	0.00	-3.3%	-0.6%	0.025	0.020
Al Mudon International Real Estate Co KSCP	0.016	0.000	0.00%	0.12	-8.2	0.0%	2	0%	-35%	0.00	0.00	-1.5%	0.0%	0.029	0.015
Total Real estate - 39 Companies				0.59	21.12	2.7%	1,804			0.66	4.79	2.79%	2.96%		

DAILY MARKET COVERAGE REPORT

NIC MENA SECURITIES - RESEARCH AND STUDIES DEP



Technology	Price			Valuation Multiples			MKT Cap	Price Performance		Trading Indicators		ROE	ROA	52 Week (KD)	
Company	Close (KD)	Day Δ	Day % Δ	PBV(X)	PE(X)	DY%	Mn KD	MTD(%)	YTD (%)	Value (Mn KD)	(Mn Shrs)	(%)	(%)	High	Low
Automated Systems Company KPSC	0.064	0.000	0.00%	0.50	-62.08	6.3%	6	0%	-10%	0.00	0.00	-0.81%	-0.73%	0.086	0.051
Total Technology - 1 Companies				0.50	-62.08	6.3%	6			0.00	0.00	-0.81%	-0.73%		

Telecom	Price			Valuation Multiples			MKT Cap	Price Performance		Trading Indicators		ROE	ROA	52 Week (KD)	
Company	Close (KD)	Day Δ	Day % Δ	PBV(X)	PE(X)	DY%	Mn KD	MTD(%)	YTD (%)	Value (Mn KD)	(Mn Shrs)	(%)	(%)	High	Low
Mobile Telecommunications Company KSCP	0.555	0.001	0.18%	1.85	11.07	5.6%	2,402	1%	-7%	2.439	4.39	16.70%	8.33%	0.604	0.407
Kuwait Telecommunications Company KSCP	0.829	0.002	0.24%	1.92	9.49	4.2%	414	2%	7%	0.006	0.01	20.25%	12.02%	0.870	0.680
National Mobile Telecommunications Co KSCF	0.580	0.000	0.00%	0.51	9.65	11.1%	291	1%	-30%	0.004	0.01	5.27%	5.12%	0.835	0.550
AAN Digital Services Co KSCP	0.010	0.000	-2.86%	0.31	33.55	0.0%	9	-2%	-24%	0.037	3.57	0.91%	1.01%	0.021	0.009
Hayat Communications Co KSCP	0.045	0.000	0.00%	0.38	19.07	0.0%	4	0%	-40%	-	-	2.01%	2.74%	0.098	0.025
Telecom - 5 Companies				1.47	10.71	5.9%	3,119			2.5	8.0	13.70%	7.86%		

Total Market 172 Companies							28,532		-20.2%	25.3	101.3	7.94%	1.41%		
-----------------------------------	--	--	--	--	--	--	---------------	--	---------------	-------------	--------------	--------------	--------------	--	--

End of Report

The information contained in this document is proprietary to NIC and is for use only by the persons to whom it is issued. This document is confidential and may not be distributed either in part or in whole without the express agreement of NIC. It is intended solely for the use of the individual or entity to whom it is addressed and others authorized to receive it.



شركة الاستثمار الوطنية
NATIONAL INVESTMENTS COMPANY

Sharq, Al Mutanabi Street, Khaleejia Tower | P.O. Box 25667, Safat 13117, Kuwait

T.: +965 2226 6666 | Fax: +965 2226 6793 | www.nic.com.kw