



شركة الاستثمارات الوطنية  
NATIONAL INVESTMENTS COMPANY

**Bursa Kuwait – Daily Market Report**  
**MENA Securities – Research & Studies Dep.**

**Monday, October 26, 2020**

# DAILY MARKET COVERAGE REPORT

## NIC MENA SECURITIES - RESEARCH AND STUDIES DEP



Index	Close	DTD Chg Net	DTD (%)	YTD (%)	52W High	52W Low	MKT CAP Bn (KD)	PBV (X)	PE (X)	DY (%)
All Share Index	5,468.88	-93.76	-1.69%	-13.0%	6,416.43	4,339.58	31.69	1.26	15.31	3.84%
Premier Index	6,036.63	-121.16	-1.97%	-13.5%	7,172.32	4,498.65	23.58	1.70	14.17	3.55%
Main Index	4,343.98	-37.52	-0.86%	-11.6%	4,932.47	3,965.63	8.12	0.72	19.96	4.70%
NIC 50 Index	6,706.19	-117.27	-1.72%	-10.1%	7,517.86	5,014.61	27.19	1.49	14.80	3.67%

Index	Value Mn(KD)	Volume (Mn share)
All Share Index	67.74	233.62
Premier Index	62.88	132.59
Main Index	4.86	101.03
NIC 50 Index	66.51	192.85

Market Breadth	UP	Down	No Chg
All Share Index	13	98	62
Premier Index	0	19	1
Main Index	13	79	61
NIC 50 Index	2	41	7

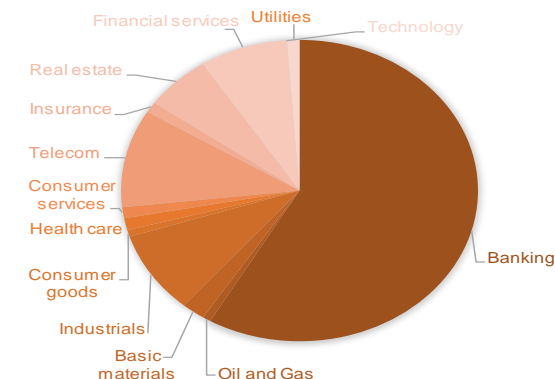
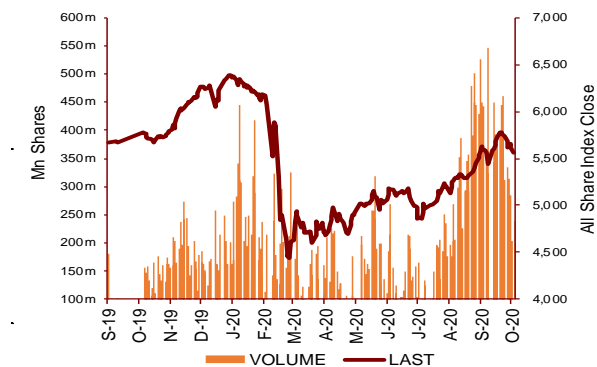
Today's Top 5 Gainer %	Close KD	Value KD	DTD (%)
Osos Holding Group	0.090	1,178	4.65%
Al Massaleh Real Estate	0.038	58	3.88%
Inovest BSC Public	0.078	13,438	3.45%
Educational Holding Group	0.305	59	3.04%
Sanam Real Estate	0.035	258	2.94%

Today's Top 5 Loser %	Close KD	Value KD	DTD (%)
Al Mal Investment Compan	0.008	58,201	-8.05%
Alrai Media Group	0.075	1,862	-5.53%
Tijara and Realestate Inves	0.045	758	-5.08%
National Industries	0.151	31,045	-5.03%
Al Mudon International Rea	0.021	32,454	-4.95%

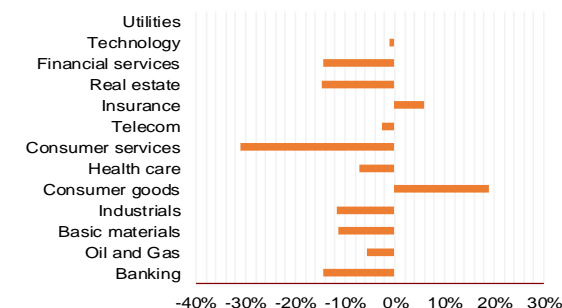
Today's Top 5 by Value	Close KD	Trade Val Mn(KD)	DTD (%)
National Bank of Kuwait	0.849	22.27	-2.41%
Kuwait Finance House	0.662	16.24	-2.50%
Ahli United Bank BSC	0.233	5.08	-1.69%
Gulf Bank	0.226	3.42	-3.42%
Mobile Telecommunications	0.597	2.84	-0.83%

Top 5 by Volume	Close KD	Trade Vol Mn(Shrs)	DTD (%)
National Bank of Kuwait	0.849	26.23	-2.41%
Kuwait Finance House	0.662	24.42	-2.50%
Ahli United Bank BSC	0.233	21.93	-1.69%
Gulf Bank	0.226	15.10	-3.42%
First Investment	0.035	11.93	-3.61%

Sector	Close	DTD Chg Net	DTD (%)	YTD (%)	52W High	52W Low	MKT CAP Bn (KD)	PBV (X)	PE (X)	DY (%)
Banking	1,269.06	-26.940	-2.08%	-14.4%	1,536.8	986.4	18.49	1.68	15.41	3.4%
Oil and Gas	1,169.63	-2.490	-0.21%	-5.6%	1,372.2	985.7	0.24	0.85	27.38	5.2%
Basic materials	798.95	-13.870	-1.71%	-11.4%	973.0	561.7	0.67	0.96	14.69	7.5%
Industrials	821.10	-8.940	-1.08%	-11.7%	937.5	602.9	2.80	0.89	13.35	5.0%
Consumer goods	761.81	-0.700	-0.09%	18.9%	810.7	548.6	0.23	1.51	92.33	2.2%
Health care	821.04	0.000	0.00%	-7.2%	884.6	815.0	0.41	4.15	48.14	1.0%
Consumer services	740.22	-3.190	-0.43%	-30.9%	1,083.1	674.8	0.37	0.85	35.54	4.7%
Telecom	1,087.85	-10.900	-0.99%	-2.5%	1,134.2	802.2	3.33	1.57	11.45	5.5%
Insurance	1,010.12	-4.060	-0.40%	5.9%	1,068.3	901.0	0.36	0.76	8.57	5.8%
Real estate	902.96	-15.070	-1.64%	-14.8%	1,083.4	763.2	1.90	0.62	22.24	2.5%
Financial services	925.44	-13.730	-1.46%	-14.4%	1,097.0	801.4	2.53	0.72	16.36	4.1%
Technology	509.25	0.000	0.00%	-1.1%	632.9	371.0	0.01	0.55	-67.90	5.7%
Utilities	855.26	-5.270	-0.61%	0.0%	1,042.1	781.6	0.36	4.67	29.06	0.0%
	5,468.88	-93.76	-1.69%	-13.0%	6,416.4	4,339.6	31.69	1.26	15.31	3.84%



YTD Sector Performance %



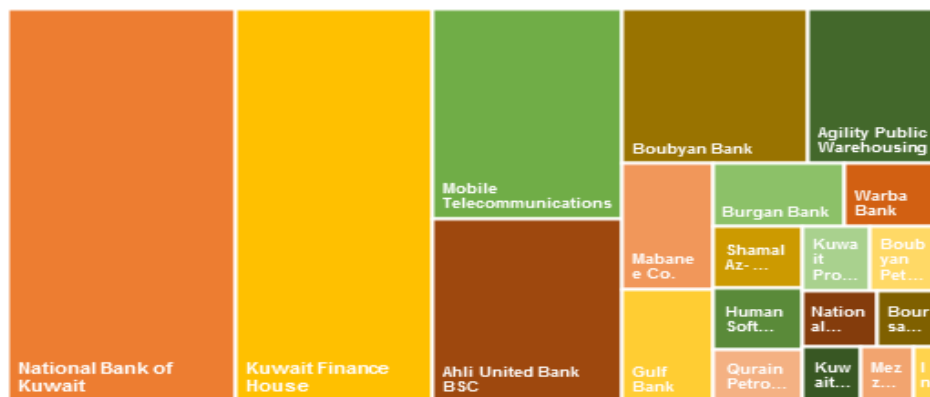
# DAILY MARKET COVERAGE REPORT

NIC MENA SECURITIES - RESEARCH AND STUDIES DEP

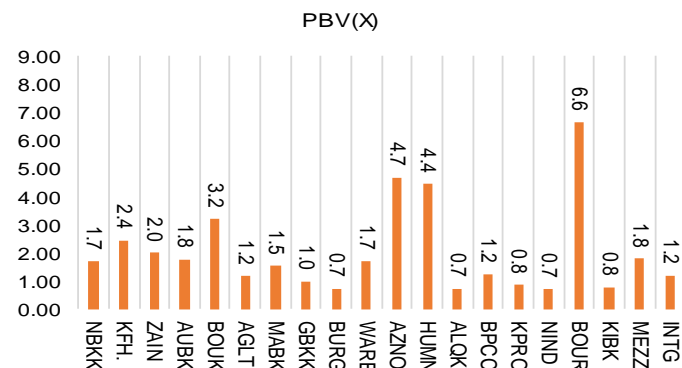


Premier Market	Price			Valuation Multiples			MKT Cap	Price Performance		Trading Indicators		ROE	ROA	52 Week (KD)		MKT Cap
	Close (KD)	Day Δ	Day % Δ	PBV(X)	PE(X)	DY%	Mn KD	MTD(%)	YTD (%)	Value (Mn KD)	(Mn Shrs)	(%)	(%)	High	Low	%
National Bank of Kuwait	0.849	-0.021	-2.41%	1.68	14.37	3.7%	5,766	-2%	-17%	22.27	26.23	11.7%	1.4%	1.062	0.654	24.45%
Kuwait Finance House	0.662	-0.017	-2.50%	2.44	20.01	2.5%	5,024	0%	-10%	16.24	24.42	12.2%	1.3%	0.761	0.473	21.31%
Mobile Telecommunications	0.597	-0.005	-0.83%	1.99	11.91	5.2%	2,583	4%	0%	2.84	4.77	16.7%	4.6%	0.629	0.407	10.96%
Ahli United Bank BSC	0.233	-0.004	-1.69%	1.76	10.26	5.2%	2,249	0%	-21%	5.08	21.93	17.1%	1.8%	0.311	0.160	9.54%
Boubyan Bank	0.607	-0.006	-0.98%	3.19	29.34	1.0%	1,838	2%	-1%	1.61	2.66	10.9%	1.2%	0.642	0.380	7.80%
Agility Public Warehousing	0.668	-0.008	-1.18%	1.16	14.73	2.7%	1,278	1%	-7%	2.06	3.09	7.9%	4.2%	0.748	0.357	5.42%
Mabane Co.	0.657	-0.018	-2.67%	1.53	12.87	1.6%	726	-10%	-23%	1.15	1.74	11.9%	5.8%	0.877	0.434	3.08%
Gulf Bank	0.226	-0.008	-3.42%	0.99	10.31	4.4%	656	3%	-25%	3.42	15.10	9.6%	1.0%	0.317	0.180	2.78%
Burgan Bank	0.208	-0.004	-1.89%	0.73	6.44	5.5%	545	3%	-31%	0.51	2.43	11.3%	1.2%	0.324	0.175	2.31%
Warba Bank	0.236	-0.008	-3.28%	1.71	22.48	0.0%	372	-5%	-10%	1.83	7.71	7.6%	0.5%	0.279	0.164	1.58%
Shamal Az-Zour Al-Oula Power & Water	0.325	-0.002	-0.61%	4.67	29.06	0.0%	358	2%	0%	0.94	2.88	16.1%	2.3%	0.500	0.297	1.52%
Human Soft Holding	2.930	-0.012	-0.41%	4.43	9.94	6.3%	356	13%	-3%	0.69	0.23	44.6%	30.3%	3.470	1.944	1.51%
Qurain Petrochemical Industries	0.298	-0.005	-1.65%	0.72	10.78	5.1%	304	9%	-4%	0.10	0.34	6.7%	3.6%	0.323	0.163	1.29%
Boubyan Petrochemical	0.546	-0.013	-2.33%	1.23	23.29	9.5%	275	1%	-17%	0.06	0.11	5.3%	2.1%	0.760	0.395	1.17%
Kuwait Projects Company Holding	0.157	-0.002	-1.26%	0.84	9.48	5.9%	285	4%	-27%	0.08	0.54	8.9%	0.3%	0.224	0.147	1.21%
National Industries Group Holding	0.187	-0.008	-4.10%	0.71	5.76	5.8%	267	13%	-22%	1.83	9.74	12.3%	3.7%	0.247	0.121	1.13%
Boursa Kuwait Securities Co	1.060	-0.028	-2.57%	6.63	22.19	0.0%	213	-7%	0%	0.16	0.15	29.9%	26.5%	1.210	0.990	0.90%
Kuwait International Bank	0.208	-0.005	-2.35%	0.76	12.37	4.8%	212	12%	-20%	1.62	7.75	6.1%	0.6%	0.270	0.162	0.90%
Mezzan Holding	0.617	0.000	0.00%	1.78	33.34	2.7%	188	-2%	23%	0.27	0.44	5.3%	2.2%	0.665	0.428	0.80%
Integrated Holding	0.374	-0.003	-0.80%	1.20	10.42	10.7%	82	4%	-32%	0.13	0.34	11.5%	8.5%	0.600	0.342	0.35%
<b>Total</b>		<b>-121.16</b>	<b>-1.97%</b>	<b>1.70</b>	<b>14.17</b>	<b>3.55%</b>	<b>23,577</b>	<b>0.2%</b>	<b>-13.5%</b>	<b>62.88</b>	<b>132.59</b>	<b>12.01%</b>	<b>1.56%</b>			<b>100%</b>

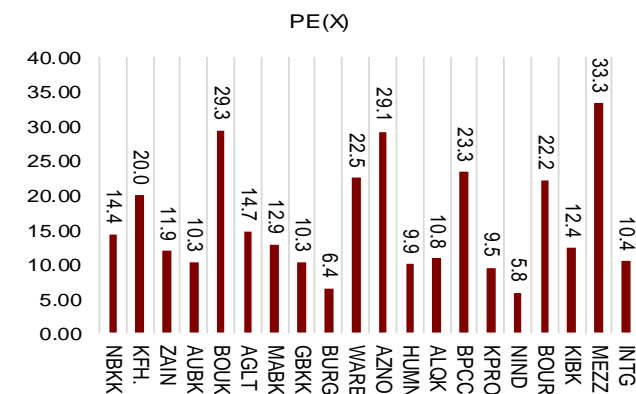
Market Capitalization



Price to Book Value



Price to Earning Value

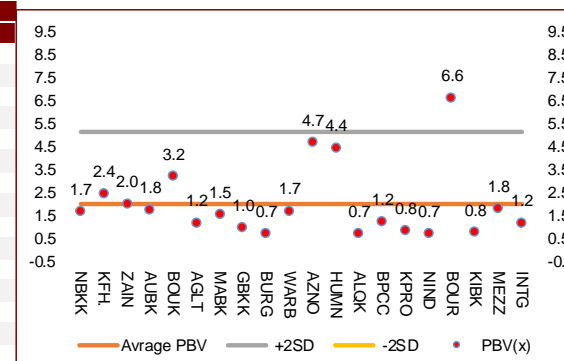


# DAILY MARKET COVERAGE REPORT

## NIC MENA SECURITIES - RESEARCH AND STUDIES DEP



Premier Market Company	Price			Valuation Multiples			MKT Cap Mn KD	Price Performance		ROE (%)	ROA (%)
	Close (KD)	Day Δ	Day % Δ	PBV(X)	PE(X)	DY%		MTD(%)	YTD (%)		
National Bank of Kuwait	0.849	-0.021	-2.41%	1.68	14.4	3.7%	5,766	-2.4%	-16.7%	11.7%	1.4%
Kuwait Finance House	0.662	-0.017	-2.50%	2.44	20.0	2.5%	5,024	0.2%	-10.2%	12.2%	1.3%
Mobile Telecommunications	0.597	-0.005	-0.83%	1.99	11.9	5.2%	2,583	4.2%	-0.3%	16.7%	4.6%
Ahli United Bank BSC	0.233	-0.004	-1.69%	1.76	10.3	5.2%	2,249	-0.4%	-20.7%	17.1%	1.8%
Boubyan Bank	0.607	-0.006	-0.98%	3.19	29.3	1.0%	1,838	1.5%	-1.1%	10.9%	1.2%
Agility Public Warehousing	0.668	-0.008	-1.18%	1.16	14.7	2.7%	1,278	1.1%	-6.7%	7.9%	4.2%
Mabane Co.	0.657	-0.018	-2.67%	1.53	12.9	1.6%	726	-9.9%	-22.9%	11.9%	5.8%
Gulf Bank	0.226	-0.008	-3.42%	0.99	10.3	4.4%	656	2.7%	-25.4%	9.6%	1.0%
Burgan Bank	0.208	-0.004	-1.89%	0.73	6.4	5.5%	545	3.5%	-31.2%	11.3%	1.2%
Warba Bank	0.236	-0.008	-3.28%	1.71	22.5	0.0%	372	-5.2%	-9.9%	7.6%	0.5%
Shamal Az-Zour Al-Oula Power & Water	0.325	-0.002	-0.61%	4.67	29.1	0.0%	358	1.6%	0.0%	16.1%	2.3%
Human Soft Holding	2.930	-0.012	-0.41%	4.43	9.9	6.3%	356	12.8%	-2.6%	44.6%	30.3%
Qurain Petrochemical Industries	0.298	-0.005	-1.65%	0.72	10.8	5.1%	304	8.8%	-3.9%	6.7%	3.6%
Boubyan Petrochemical	0.546	-0.013	-2.33%	1.23	23.3	9.5%	275	1.1%	-16.8%	5.3%	2.1%
Kuwait Projects Company Holding	0.157	-0.002	-1.26%	0.84	9.5	5.9%	285	4.0%	-27.3%	8.9%	0.3%
National Industries Group Holding	0.187	-0.008	-4.10%	0.71	5.8	5.8%	267	12.7%	-22.4%	12.3%	3.7%
Boursa Kuwait Securities Co	1.060	-0.028	-2.57%	6.63	22.2	0.0%	213	-7.0%	0.0%	29.9%	26.5%
Kuwait International Bank	0.208	-0.005	-2.35%	0.76	12.4	4.8%	212	11.8%	-20.3%	6.1%	0.6%
Mezzan Holding	0.617	0.000	0.00%	1.78	33.3	2.7%	188	-1.6%	22.6%	5.3%	2.2%
Integrated Holding	0.374	-0.003	-0.80%	1.20	10.4	10.7%	82	4.2%	-32.1%	11.5%	8.5%
<b>Total</b>		<b>-121.16</b>	<b>-1.97%</b>	<b>1.70</b>	<b>14.17</b>	<b>3.55%</b>	<b>23,577</b>	<b>0.2%</b>	<b>-13.5%</b>	<b>12.01%</b>	<b>1.56%</b>



Premier Market Discription	Price			Moving Average		RSI 14 Day	MKT Cap Mn KD	Price Performance		52 Week (KD)	
	Close (KD)	Day Δ	Day % Δ	50 Day	200 Day			MTD(%)	YTD (%)	High	Low
Premier Index	6,037	-121.16	-1.97%	6,027	5,838	46	23,577	0.2%	-13.5%	7,172	4,499

### Top 5 Performrs (Today's Price Change)

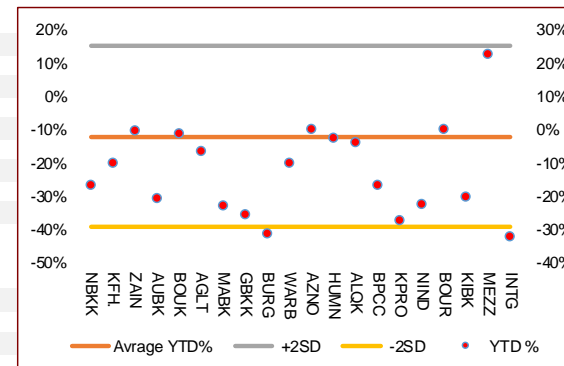
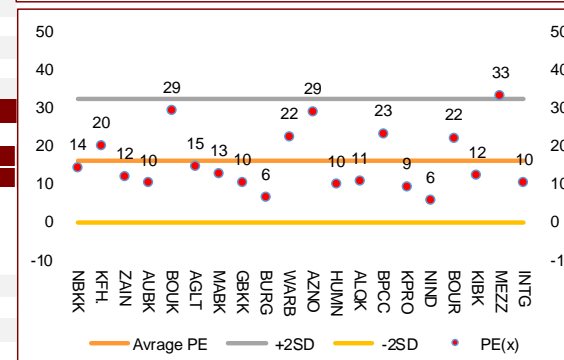
Mezzan Holding	0.617	0.000	0.00%	0.629	0.564	37	188	-1.6%	22.6%	0.665	0.428
Human Soft Holding	2.930	-0.012	-0.41%	2.706	2.775	79	356	12.8%	-2.6%	3.470	1.944
Shamal Az-Zour Al-Oula Power & Water	0.325	-0.002	-0.61%	0.317	0.079	43	358	1.6%	0.0%	0.500	0.297
Integrated Holding	0.374	-0.003	-0.80%	0.371	0.435	63	82	4.2%	-32.1%	0.600	0.342
Mobile Telecommunications	0.597	-0.005	-0.83%	0.590	0.550	59	2,583	4.2%	-0.3%	0.629	0.407

### Middel Performrs (Today's Price Change)

Boubyan Bank	0.607	-0.006	-0.98%	0.594	0.547	54	1,838	1.5%	-1.1%	0.642	0.380
Agility Public Warehousing	0.668	-0.008	-1.18%	0.654	0.614	47	1,278	1.1%	-6.7%	0.748	0.357
Kuwait Projects Company Holding	0.157	-0.002	-1.26%	0.155	0.173	61	285	4.0%	-27.3%	0.224	0.147
Qurain Petrochemical Industries	0.298	-0.005	-1.65%	0.288	0.266	70	304	8.8%	-3.9%	0.323	0.163
Ahli United Bank BSC	0.233	-0.004	-1.69%	0.234	0.225	40	2,249	-0.4%	-20.7%	0.311	0.160
Burgan Bank	0.208	-0.004	-1.89%	0.206	0.223	54	545	3.5%	-31.2%	0.324	0.175
Boubyan Petrochemical	0.546	-0.013	-2.33%	0.555	0.565	48	275	1.1%	-16.8%	0.760	0.395
Kuwait International Bank	0.208	-0.005	-2.35%	0.190	0.200	69	212	11.8%	-20.3%	0.270	0.162
National Bank of Kuwait	0.849	-0.021	-2.41%	0.869	0.840	35	5,766	-2.4%	-16.7%	1.062	0.654
Kuwait Finance House	0.662	-0.017	-2.50%	0.100	0.100	44	5,024	0.2%	-10.2%	1.210	0.996

### Bottom 5 Performrs (Today's Price Change)

National Industries Group Holding	0.187	-0.008	-4.10%	0.174	0.181	73	267	12.7%	-22.4%	0.247	0.121
Gulf Bank	0.226	-0.008	-3.42%	0.223	0.233	59	656	2.7%	-25.4%	0.317	0.180
Warba Bank	0.236	-0.008	-3.28%	0.231	0.220	40	372	-5.2%	-9.9%	0.279	0.164
Mabane Co.	0.657	-0.018	-2.67%	0.689	0.677	9	726	-9.9%	-22.9%	0.877	0.434
Boursa Kuwait Securities Co	1.060	-0.028	-2.57%	0.624	0.156	21	213	-7.0%	0.0%	1.210	0.990



# DAILY MARKET COVERAGE REPORT

NIC MENA SECURITIES - RESEARCH AND STUDIES DEP



Banking Sector		Price			Valuation Multiples			MKT Cap	Price Performance		Trading Indicators		ROE	ROA	52 Week (KD)		MKT Cap
Company	Close (KD)	Day Δ	Day % Δ	PBV(X)	PE(X)	DY%	Mn KD	MTD(%)	YTD (%)	Value (Mn KD)	(Mn Shrs)	(%)	(%)	High	Low	%	
National Bank of Kuwait	0.849	-0.021	-2.41%	1.68	14.37	3.7%	5,766	-2%	-17%	22.27	26.23	11.7%	1.4%	1.062	0.654	18.19%	
Kuwait Finance House	0.662	-0.017	-2.50%	2.44	20.01	2.5%	5,024	0%	-10%	16.24	24.42	12.2%	1.3%	0.761	0.473	15.85%	
Ahli United Bank BSC	0.233	-0.004	-1.69%	1.76	10.26	5.2%	2,249	0%	-21%	5.08	21.93	17.1%	1.8%	0.311	0.160	7.10%	
Boubyan Bank	0.607	-0.006	-0.98%	3.19	29.34	1.0%	1,838	2%	-1%	1.61	2.66	10.9%	1.2%	0.642	0.380	5.80%	
Commercial Bank of Kuwait	0.500	0.000	0.00%	1.32	0.00	3.7%	965	0%	-5%	0.00	0.00	0.0%	0.0%	0.555	0.465	3.05%	
Gulf Bank	0.226	-0.008	-3.42%	0.99	10.31	4.4%	656	3%	-25%	3.42	15.10	9.6%	1.0%	0.317	0.180	2.07%	
Burgan Bank	0.208	-0.004	-1.89%	0.73	6.44	5.5%	545	3%	-31%	0.51	2.43	11.3%	1.2%	0.324	0.175	1.72%	
Ahli United Bank	0.278	-0.004	-1.42%	1.19	9.85	4.9%	542	2%	-15%	0.14	0.51	12.1%	1.3%	0.330	0.225	1.71%	
Warba Bank	0.236	-0.008	-3.28%	1.71	22.48	0.0%	372	-5%	-10%	1.83	7.71	7.6%	0.5%	0.279	0.164	1.17%	
Al Ahli Bank of Kuwait	0.201	-0.003	-1.47%	0.58	11.26	7.0%	323	8%	-21%	0.16	0.82	5.1%	0.6%	0.294	0.156	1.02%	
Kuwait International Bank	0.208	-0.005	-2.35%	0.76	12.37	4.8%	212	12%	-20%	1.62	7.75	6.1%	0.6%	0.270	0.162	0.67%	
<b>Total Banking Sector - 11 Companies</b>				<b>1.68</b>	<b>15.41</b>	<b>3.4%</b>	<b>18,492</b>			<b>52.88</b>	<b>109.56</b>	<b>10.90%</b>	<b>1.21%</b>			<b>58.34%</b>	

Basic materials		Price			Valuation Multiples			MKT Cap	Price Performance		Trading Indicators		ROE	ROA	52 Week (KD)		MKT Cap
Company	Close (KD)	Day Δ	Day % Δ	PBV(X)	PE(X)	DY%	Mn KD	MTD(%)	YTD (%)	Value (Mn KD)	(Mn Shrs)	(%)	(%)	High	Low	%	
Qurain Petrochemical Industries	0.298	-0.005	-1.65%	0.72	10.78	5.1%	304	9%	-4%	0.10	0.34	6.7%	3.6%	0.323	0.163	0.96%	
Boubyan Petrochemical	0.546	-0.013	-2.33%	1.23	23.29	9.5%	275	1%	-17%	0.06	0.11	5.3%	2.1%	0.760	0.395	0.87%	
Al Kout Industrial Projects	0.731	0.000	0.00%	2.38	15.41	6.8%	74	-5%	-14%	0.00	0.00	15.4%	11.3%	0.850	0.731	0.23%	
Kuwait Foundry	0.252	0.000	0.00%	0.84	20.37	21.2%	18	-2%	-25%	0.00	0.00	4.1%	3.8%	0.409	0.192	0.06%	
<b>Total Basic materials - 4 Companies</b>				<b>0.96</b>	<b>14.69</b>	<b>7.5%</b>	<b>672</b>			<b>0.16</b>	<b>0.45</b>	<b>6.57%</b>	<b>5.07%</b>			<b>2.12%</b>	

Consumer goods		Price			Valuation Multiples			MKT Cap	Price Performance		Trading Indicators		ROE	ROA	52 Week (KD)		MKT Cap
Company	Close (KD)	Day Δ	Day % Δ	PBV(X)	PE(X)	DY%	Mn KD	MTD(%)	YTD (%)	Value (Mn KD)	(Mn Shrs)	(%)	(%)	High	Low	%	
Mezzan Holding	0.617	0.000	0.00%	1.78	33.34	2.7%	188	-2%	23%	0.27	0.44	5.3%	2.2%	0.665	0.428	0.59%	
Livestock Transport and Trading	0.185	-0.001	-0.54%	0.96	32.97	0.1%	39	1%	6%	0.01	0.04	2.9%	2.0%	0.200	0.152	0.12%	
Danah Al Safat Foodstuff	0.012	0.000	0.00%	0.25	(0.30)	0.1%	1	0%	-25%	0.00	0.00	-84.8%	-43.2%	0.019	0.010	0.00%	
<b>Total Basic materials - 3 Companies</b>				<b>1.51</b>	<b>92.33</b>	<b>2.2%</b>	<b>228</b>			<b>0.28</b>	<b>0.48</b>	<b>1.64%</b>	<b>0.90%</b>			<b>0.72%</b>	

# DAILY MARKET COVERAGE REPORT

NIC MENA SECURITIES - RESEARCH AND STUDIES DEP



Consumer services																
Company	Price			Valuation Multiples			MKT Cap	Price Performance		Trading Indicators		ROE	ROA	52 Week (KD)		MKT Cap
	Close (KD)	Day Δ	Day % Δ	PBV(X)	PE(X)	DY%	Mn KD	MTD(%)	YTD (%)	Value (Mn KD)	(Mn Shrs)	(%)	(%)	High	Low	%
Jazeera Airways	0.570	0.000	0.00%	2.83	7.63	6.1%	114	-3%	-48%	0.08	0.14	37.1%	9.0%	1.110	0.372	0.36%
Kuwait National Cinema	0.695	0.000	0.00%	0.80	7.52	7.0%	64	-1%	-34%	0.00	0.00	10.6%	7.2%	1.050	0.600	0.20%
Oula Fuel Marketing	0.116	-0.001	-0.85%	0.70	12.14	5.1%	47	5%	-9%	0.02	0.19	5.7%	3.2%	0.134	0.095	0.15%
Al Soor Fuel Marketing	0.115	-0.001	-0.86%	0.71	13.46	4.3%	47	5%	-7%	0.00	0.04	5.3%	3.7%	0.129	0.096	0.15%
Sultan Center Food Products	0.049	0.000	0.00%	0.61	12.36	0.0%	28	-7%	-6%	0.00	0.00	4.9%	0.7%	0.060	0.038	0.09%
Jiyad Holding	0.049	0.000	-0.61%	0.44	9.71	0.0%	17	21%	25%	0.01	0.11	4.5%	2.8%	0.054	0.029	0.05%
IFA Hotels and Resorts	0.022	0.000	-0.91%	0.78	(0.60)	0.0%	13	-6%	-60%	0.01	0.37	-131.5%	-8.1%	0.062	0.021	0.04%
Kuwait Resorts	0.053	-0.001	-1.11%	0.37	9.70	0.0%	10	1%	-9%	0.03	0.62	3.8%	3.2%	0.060	0.038	0.03%
Alrai Media Group	0.075	-0.004	-5.53%	0.74	(2.16)	0.0%	8	-10%	-12%	0.00	0.02	-34.2%	-20.0%	0.093	0.069	0.02%
Future Kid Entertainment and Real Estate	0.080	0.000	0.00%	0.46	30.22	14.4%	9	0%	-9%	0.00	0.00	1.5%	0.9%	0.110	0.069	0.03%
Al Eid Food	0.079	-0.001	-0.63%	0.53	6.31	0.0%	10	37%	20%	0.06	0.71	8.4%	6.1%	0.080	0.043	0.03%
Kuwait Hotels	0.060	0.001	1.69%	0.84	(3.47)	0.0%	3	-45%	-41%	0.00	0.00	-24.4%	-13.2%	0.111	0.054	0.01%
Palms Agro Production	0.080	0.000	0.00%	0.67	(56.04)	12.5%	4	22%	98%	0.00	0.00	-1.2%	-0.9%	0.080	0.025	0.01%
Kuwait Cable Vision	0.014	0.000	0.00%	0.52	(11.65)	0.0%	1	0%	0%	0.00	0.00	-4.5%	-3.0%	0.026	0.012	0.00%
<b>Total Consumer services - 14 Companies</b>				<b>0.85</b>	<b>35.54</b>	<b>4.7%</b>	<b>374</b>			<b>0.21</b>	<b>2.20</b>	<b>2.38%</b>	<b>2.72%</b>			<b>1.18%</b>

Financial services																
Company	Price			Valuation Multiples			MKT Cap	Price Performance		Trading Indicators		ROE	ROA	52 Week (KD)		MKT Cap
	Close (KD)	Day Δ	Day % Δ	PBV(X)	PE(X)	DY%	Mn KD	MTD(%)	YTD (%)	Value (Mn KD)	(Mn Shrs)	(%)	(%)	High	Low	%
Egypt Kuwait Holding	0.379	0.000	0.00%	2.25	12.79	5.2%	388	4%	-16%	0.00	0.00	17.6%	7.1%	0.494	0.318	1.23%
Kuwait Projects Company Holding	0.157	-0.002	-1.26%	0.84	9.48	5.9%	285	4%	-27%	0.08	0.54	8.9%	0.3%	0.224	0.147	0.90%
National Industries Group Holding	0.187	-0.008	-4.10%	0.71	5.76	5.8%	267	13%	-22%	1.83	9.74	12.3%	3.7%	0.247	0.121	0.84%
Boursa Kuwait Securities Co	1.060	-0.028	-2.57%	6.63	22.19	0.0%	213	-7%	0%	0.16	0.15	29.9%	26.5%	1.210	0.990	0.67%
GFH Financial Group	0.044	-0.001	-2.44%	0.48	6.00	6.5%	149	-10%	-36%	0.16	3.61	8.0%	1.3%	0.074	0.042	0.47%
National Investments	0.135	0.000	0.00%	0.60	10.04	6.0%	108	2%	-2%	0.07	0.54	5.9%	5.0%	0.158	0.080	0.34%
Tamdeen Investment	0.300	0.000	0.00%	0.37	12.44	4.0%	103	-2%	-13%	0.00	0.00	3.0%	2.2%	0.400	0.199	0.32%
Alimtiq Investment Group	0.099	-0.003	-2.84%	0.47	5.16	8.0%	102	9%	-21%	0.37	3.74	9.1%	5.2%	0.137	0.071	0.32%
Commercial Facilities	0.180	-0.001	-0.55%	0.56	6.93	9.3%	91	-1%	-17%	0.00	0.02	8.0%	4.2%	0.235	0.178	0.29%
Aayan Leasing and Investment	0.086	-0.002	-2.61%	1.00	(4.70)	2.1%	69	0%	85%	0.59	6.81	-21.4%	-4.9%	0.102	0.032	0.22%
Kuwait Investment	0.129	-0.004	-3.01%	0.56	4.04	7.8%	71	1%	-14%	0.08	0.62	13.9%	6.0%	0.172	0.095	0.22%
Noor Financial Investment	0.174	0.004	2.35%	1.06	8.51	2.8%	69	11%	46%	0.02	0.12	12.5%	7.5%	0.184	0.076	0.22%



# DAILY MARKET COVERAGE REPORT

## NIC MENA SECURITIES - RESEARCH AND STUDIES DEP



Financial services Company	Price			Valuation Multiples			MKT Cap	Price Performance		Trading Indicators		ROE	ROA	52 Week (KD)		MKT Cap
	Close (KD)	Day Δ	Day % Δ	PBV(X)	PE(X)	DY%	Mn KD	MTD(%)	YTD (%)	Value (Mn KD)	(Mn Shrs)	(%)	(%)	High	Low	%
Arzan Financial Group for Financing and Invest	0.057	-0.001	-2.41%	0.46	41.30	0.0%	45	1%	140%	0.12	2.19	1.1%	0.7%	0.064	0.022	0.14%
Kuwait Financial Centre	0.083	-0.002	-1.79%	0.41	5.67	6.0%	39	-2%	-22%	0.01	0.13	7.3%	3.5%	0.121	0.070	0.12%
Gulf Investment House	0.093	0.000	0.00%	1.04	172.02	0.0%	38	-1%	44%	0.01	0.13	0.6%	0.5%	0.108	0.038	0.12%
Al Bareeq Holding	0.081	0.000	0.00%	0.85	16.18	0.0%	35	2%	-19%	0.02	0.30	5.2%	5.0%	0.110	0.072	0.11%
Arabi Group Holdings	0.198	0.000	0.00%	1.07	(19.90)	0.0%	33	0%	-28%	0.00	0.00	-5.4%	-0.6%	0.337	0.190	0.10%
Kuwait and Middle East Financial Investment	0.114	-0.001	-0.87%	1.85	45.53	0.0%	30	4%	27%	0.00	0.01	4.1%	3.2%	0.138	0.063	0.09%
Privatization Holding	0.042	-0.002	-4.50%	0.31	(38.23)	0.0%	26	1%	-14%	0.00	0.00	-0.8%	-0.5%	0.059	0.037	0.08%
Asiya Capital Investments	0.034	0.000	0.00%	0.36	17.37	0.2%	26	5%	-18%	0.00	0.00	2.1%	2.0%	0.041	0.029	0.08%
Umm Al Qaiwain General Investment Co	0.072	0.000	0.00%	0.48	13.53	5.1%	26	-4%	3%	0.00	0.07	3.6%	3.3%	0.096	0.052	0.08%
Securities House	0.042	-0.002	-3.64%	0.58	(61.99)	0.0%	24	-2%	-7%	0.03	0.61	-0.9%	-0.7%	0.050	0.027	0.07%
KAMCO Investment	0.071	-0.001	-0.97%	0.43	8.06	0.0%	24	-1%	-21%	0.04	0.53	5.4%	2.3%	0.111	0.060	0.08%
First Investment	0.035	-0.001	-3.61%	0.54	(0.47)	0.0%	23	8%	-1%	0.42	11.93	-113.6%	-62.0%	0.045	0.022	0.07%
Inovest BSC Public	0.078	0.003	3.45%	0.54	10.46	7.6%	23	5%	24%	0.01	0.18	5.2%	2.9%	0.081	0.044	0.07%
Coast Investment and Development	0.040	-0.001	-2.43%	0.43	39.96	0.0%	23	12%	0%	0.09	2.17	1.1%	1.0%	0.045	0.026	0.07%
Al Madar Finance and Investment	0.087	-0.001	-1.59%	0.78	12.92	0.0%	18	6%	-6%	0.03	0.33	6.1%	5.0%	0.143	0.062	0.06%
Bayan Investment	0.041	0.000	0.00%	0.41	(21.29)	0.0%	15	-13%	8%	0.00	0.00	-1.9%	-0.8%	0.053	0.031	0.05%
Al Manar Financing and Leasing	0.045	0.000	0.00%	0.41	11.57	1.1%	14	1%	-13%	0.00	0.00	3.5%	2.7%	0.060	0.037	0.04%
Manazel Holding	0.033	0.000	-1.19%	0.73	21.27	0.0%	14	5%	-14%	0.03	1.00	3.4%	0.8%	0.048	0.021	0.04%
Kuwait Finance and Investment	0.049	0.000	0.00%	0.38	21.82	0.0%	15	12%	-2%	0.00	0.00	1.8%	1.2%	0.058	0.038	0.05%
National International Holding	0.063	0.000	0.00%	0.33	7.57	4.7%	13	5%	-14%	0.00	0.00	4.4%	3.3%	0.081	0.052	0.04%
Osoul Investment	0.080	-0.004	-4.65%	0.60	6.72	0.0%	12	0%	7%	0.00	0.01	9.0%	8.2%	0.121	0.070	0.04%
UniCap Investment and Finance	0.042	-0.001	-1.18%	0.42	(21.02)	0.0%	10	4%	-19%	0.00	0.00	-2.0%	-1.0%	0.057	0.035	0.03%
Amar Finance and Leasing	0.055	0.000	0.00%	0.62	46.05	0.0%	11	-2%	45%	0.00	0.00	1.3%	1.2%	0.064	0.037	0.03%
Gulf North Africa Holding	0.059	0.000	0.00%	0.78	76.01	0.0%	9	1%	-5%	0.00	0.00	1.0%	0.6%	0.062	0.052	0.03%
Al Salam Group Holding	0.027	0.000	-1.46%	0.23	203.83	0.0%	7	4%	-9%	0.14	5.18	0.1%	0.1%	0.033	0.018	0.02%
International Financial Advisors	0.058	0.000	0.00%	1.74	(0.78)	1.1%	14	87%	8%	0.01	0.23	-222.8%	-19.3%	0.064	0.027	0.05%
Amwal International Investment	0.036	0.000	0.00%	0.66	13.12	0.0%	6	0%	18%	0.00	0.00	5.0%	2.6%	0.043	0.030	0.02%
Al Madina for Finance and Investment	0.016	0.000	-2.44%	0.54	(3.01)	0.0%	6	32%	8%	0.13	7.81	-17.9%	-7.7%	0.019	0.009	0.02%
Credit Rating and Collection	0.032	0.000	0.00%	0.97	(21.20)	0.0%	5	0%	58%	0.00	0.00	-4.6%	-4.3%	0.035	0.019	0.02%
Ektitab Holding	0.016	0.000	-0.62%	0.38	(11.27)	0.0%	5	3%	5%	0.04	2.32	-3.4%	-3.0%	0.017	0.010	0.02%
Kuwait Syrian Holding Co	0.030	0.000	0.00%	0.26	(15.33)	0.0%	5	11%	-5%	0.00	0.00	-1.7%	-1.1%	0.043	0.022	0.02%
Warba Capital Holding	0.048	-0.002	-3.26%	0.53	(7.55)	0.0%	5	2%	-26%	0.01	0.19	-7.0%	-6.2%	0.070	0.042	0.01%
National Consumer Holding	0.043	-0.002	-3.56%	0.48	213.02	0.0%	4	-9%	-21%	0.00	0.00	0.2%	0.2%	0.100	0.010	0.01%
Al Deera Holding	0.016	0.000	0.00%	0.70	(9.02)	0.0%	3	0%	-20%	0.00	0.00	-7.7%	-1.7%	0.022	0.011	0.01%
Al Mal Investment Company	0.008	-0.001	-8.05%	0.36	(0.75)	0.0%	2	-8%	-17%	0.06	7.12	-47.6%	-23.3%	0.016	0.008	0.01%
Gulf Franchising Holding	0.050	0.000	0.00%	0.78	(2.16)	0.0%	2	4%	-34%	0.00	0.00	-36.2%	-10.8%	0.148	0.016	0.01%
Tamkeen Holding	0.005	0.000	0.00%	0.05	(7.18)	0.0%	0	0%	0%	0.00	0.00	-0.7%	-0.7%	0.005	0.005	0.00%
<b>Total Financial services - 49 Companies</b>				<b>0.72</b>	<b>16.36</b>	<b>4.1%</b>	<b>2,526</b>			<b>4.58</b>	<b>68.32</b>	<b>4.42%</b>	<b>4.14%</b>			<b>7.97%</b>

# DAILY MARKET COVERAGE REPORT

NIC MENA SECURITIES - RESEARCH AND STUDIES DEP



Health care	Price			Valuation Multiples			MKT Cap	Price Performance		Trading Indicators		ROE	ROA	52 Week (KD)		MKT Cap
Company	Close (KD)	Day Δ	Day % Δ	PBV(X)	PE(X)	DY%	Mn KD	MTD(%)	YTD (%)	Value (Mn KD)	(Mn Shrs)	(%)	(%)	High	Low	%
Al-Maidan Clinic for Oral Health Services	1.220	0.000	0.00%	7.90	47.78	0.6%	305	0%	0%	0.00	0.00	16.5%	10.9%	1.220	1.220	0.96%
Advanced Technology	0.600	0.000	0.00%	1.56	48.85	2.5%	90	1%	-26%	0.00	0.00	3.2%	0.7%	0.900	0.580	0.28%
Yiaco Medical	0.707	0.000	0.00%	6.06	52.72	0.0%	12	0%	0%	0.00	0.00	11.5%	0.6%	0.707	0.707	0.04%
<b>Total Health care - 3 Companies</b>				<b>4.15</b>	<b>48.14</b>	<b>1.0%</b>	<b>407</b>			<b>0.00</b>	<b>0.00</b>	<b>8.61%</b>	<b>4.68%</b>			<b>1.28%</b>

Industrials	Price			Valuation Multiples			MKT Cap	Price Performance		Trading Indicators		ROE	ROA	52 Week (KD)		MKT Cap
Company	Close (KD)	Day Δ	Day % Δ	PBV(X)	PE(X)	DY%	Mn KD	MTD(%)	YTD (%)	Value (Mn KD)	(Mn Shrs)	(%)	(%)	High	Low	%
Agility Public Warehousing	0.668	-0.008	-1.18%	1.16	14.73	2.7%	1,278	1%	-7%	2.06	3.09	7.9%	4.2%	0.748	0.357	4.03%
Human Soft Holding	2.930	-0.012	-0.41%	4.43	9.94	6.3%	356	13%	-3%	0.69	0.23	44.6%	30.3%	3.470	1.944	1.12%
ALAFCO Aviation Lease and Finance	0.162	-0.002	-1.22%	0.48	8.72	6.2%	154	3%	-41%	0.08	0.52	5.5%	1.4%	0.278	0.138	0.49%
Kuwait Cement	0.222	-0.003	-1.33%	0.76	39.40	6.7%	158	16%	-9%	0.06	0.27	1.9%	1.3%	0.258	0.144	0.50%
Gulf Cable and Electrical Industries	0.656	-0.012	-1.80%	0.79	32.53	4.2%	138	-5%	-33%	0.39	0.60	2.4%	2.2%	0.742	0.390	0.43%
Integrated Holding	0.374	-0.003	-0.80%	1.20	10.42	10.7%	82	4%	-32%	0.13	0.34	11.5%	8.5%	0.600	0.342	0.26%
Kuwait Portland Cement	0.780	-0.010	-1.27%	1.05	10.30	12.6%	78	4%	-21%	0.03	0.03	10.2%	8.2%	1.133	0.683	0.25%
Educational Holding Group	0.305	0.009	3.04%	1.76	9.66	4.9%	75	-1%	-31%	0.00	0.00	18.3%	16.7%	0.475	0.228	0.24%
United Projects for Aviation Services	0.371	-0.019	-4.87%	0.78	6.35	5.7%	59	-20%	-28%	0.00	0.00	12.3%	7.8%	0.512	0.361	0.19%
Heavy Engineering Industries and Shipbuilding	0.377	0.001	0.27%	1.09	6.05	7.8%	68	4%	-7%	0.08	0.22	18.0%	5.9%	0.419	0.298	0.21%
National Industries	0.151	-0.008	-5.03%	0.63	12.31	6.5%	53	-3%	-8%	0.03	0.20	5.1%	3.8%	0.173	0.143	0.17%
ACICO Industries	0.098	0.000	0.00%	0.31	12.70	5.1%	32	-3%	-27%	0.00	0.00	2.5%	0.6%	0.137	0.081	0.10%
Kuwait Company for Process Plant Constructi	0.315	-0.001	-0.32%	1.25	6.75	5.7%	34	4%	31%	0.01	0.05	18.5%	7.7%	0.337	0.175	0.11%
Ras Al Khaimah for White Cement and Constr	0.065	0.000	0.00%	0.51	19.94	8.4%	33	0%	0%	0.00	0.00	2.6%	2.0%	0.080	0.060	0.10%
Combined Group Contracting	0.180	-0.005	-2.70%	0.63	8.11	11.4%	29	5%	-27%	0.08	0.47	7.7%	1.2%	0.251	0.138	0.09%
Gulf Cement	0.033	-0.001	-2.94%	0.33	(12.04)	12.6%	27	4%	-38%	0.00	0.04	-2.7%	-2.2%	0.058	0.029	0.09%
Sharjah Cement and Industrial Development	0.042	0.000	0.00%	0.21	25.32	12.4%	26	0%	0%	0.00	0.00	0.8%	0.6%	0.060	0.042	0.08%
KGL Logistics	0.029	0.000	0.00%	0.22	4.76	0.1%	22	9%	-21%	0.01	0.38	4.6%	2.9%	0.043	0.023	0.07%
Kuwait and Gulf Link Transport	0.051	0.000	0.00%	0.21	15.42	0.0%	14	9%	-23%	0.00	0.07	1.4%	0.4%	0.077	0.042	0.04%
Shuaiba Industrial	0.150	0.000	0.00%	0.84	46.32	6.6%	15	15%	-3%	0.00	0.00	1.8%	1.4%	0.180	0.122	0.05%
National Cleaning	0.056	0.000	-0.18%	0.33	7.54	9.0%	12	-5%	-21%	0.00	0.05	4.4%	1.5%	0.088	0.047	0.04%
Fujairah Cement Industries	0.035	0.000	-0.85%	0.14	17.07	11.9%	13	3%	-22%	0.00	0.01	0.8%	0.4%	0.051	0.029	0.04%
Hilal Cement	0.114	0.000	0.00%	0.99	(9.37)	13.2%	12	0%	14%	0.00	0.00	-10.6%	-6.2%	0.126	0.063	0.04%
Mubarrad Holding	0.061	-0.001	-0.98%	0.48	9.82	7.7%	10	0%	-31%	0.01	0.19	4.9%	4.1%	0.089	0.049	0.03%
Specialities Group Holding	0.064	-0.001	-0.78%	0.34	7.56	0.0%	10	2%	-17%	0.00	0.06	4.5%	3.5%	0.078	0.050	0.03%
National Ranges	0.017	0.000	0.00%	0.31	(1.25)	0.0%	5	19%	67%	0.01	0.38	-24.9%	-5.3%	0.018	0.007	0.02%
Salbookh Trading	0.035	0.001	1.73%	0.48	(2.06)	0.0%	4	-7%	-33%	0.00	0.06	-23.2%	-15.9%	0.051	0.026	0.01%
Metal and Recycling	0.038	0.000	0.00%	0.32	(1.61)	0.0%	3	-3%	-24%	0.00	0.00	-19.7%	-10.1%	0.070	0.020	0.01%
Equipment Holding	0.015	0.000	-1.94%	0.30	(175.52)	0.0%	2	-5%	-31%	0.00	0.25	-0.2%	-0.1%	0.024	0.013	0.01%
<b>Total Industrials - 29 Companies</b>				<b>0.89</b>	<b>13.35</b>	<b>5.0%</b>	<b>2,802</b>			<b>3.70</b>	<b>7.50</b>	<b>6.67%</b>	<b>5.05%</b>			<b>8.84%</b>



# DAILY MARKET COVERAGE REPORT

NIC MENA SECURITIES - RESEARCH AND STUDIES DEP



Insurance	Price			Valuation Multiples			MKT Cap	Price Performance		Trading Indicators		ROE	ROA	52 Week (KD)		MKT Cap
	Company	Close (KD)	Day Δ	Day % Δ	PBV(X)	PE(X)		DY%	Mn KD	MTD(%)	YTD (%)			Value (Mn KD)	(Mn Shrs)	
Gulf Insurance Group	0.599	0.000	0.00%	1.03	8.36	6.2%	112	-16%	-9%	0.00	0.00	12.3%	1.7%	0.720	0.550	0.35%
Al Ahleia Insurance	0.419	0.000	0.00%	0.79	8.44	8.0%	86	5%	3%	0.00	0.00	9.4%	3.3%	0.445	0.367	0.27%
Kuwait Insurance	0.375	-0.005	-1.32%	0.61	7.26	6.4%	69	4%	14%	0.00	0.00	8.5%	4.6%	0.380	0.300	0.22%
Kuwait Reinsurance	0.225	0.000	0.00%	0.85	9.63	1.9%	46	2%	63%	0.00	0.00	8.9%	3.2%	0.225	0.126	0.14%
Bahrain Kuwait Insurance	0.200	0.000	0.00%	0.93	12.86	6.1%	28	0%	0%	0.00	0.00	7.2%	1.1%	0.200	0.200	0.09%
Warba Insurance	0.075	-0.001	-1.71%	0.33	10.60	0.0%	12	2%	23%	0.00	0.06	3.1%	1.0%	0.094	0.051	0.04%
First Takaful Insurance	0.038	-0.002	-4.80%	0.46	4.78	0.0%	4	2%	-1%	0.00	0.00	9.6%	5.9%	0.056	0.031	0.01%
Wethaq Takaful Insurance	0.021	-0.001	-3.67%	0.19	(26.58)	0.0%	2	-11%	-16%	0.00	0.02	-0.7%	-0.7%	0.035	0.018	0.01%
<b>Total Insurance - 8 Companies</b>				<b>0.76</b>	<b>8.57</b>	<b>5.8%</b>	<b>360</b>			<b>0.01</b>	<b>0.08</b>	<b>8.86%</b>	<b>3.00%</b>			<b>1.14%</b>

Oil and Gas	Price			Valuation Multipels			MKT Cap	Price Performance		Trading Indicators		ROE	ROA	52 Week (KD)		MKT Cap
	Company	Close (KD)	Day Δ	Day % Δ	PBV(X)	PE(X)		DY%	Mn KD	MTD(%)	YTD (%)			Value (Mn KD)	(Mn Shrs)	
National Petroleum Services	1.150	0.000	0.00%	2.74	9.81	6.1%	112	5%	-2%	0.00	0.00	27.9%	23.6%	1.389	0.903	0.35%
Independent Petroleum Group	0.430	0.000	0.00%	0.79	11.72	7.0%	78	0%	-11%	0.00	0.00	6.8%	2.2%	0.497	0.375	0.25%
Burgan for Well Drilling Trading and Maintenanc	0.076	0.002	2.56%	0.28	7.72	0.0%	17	-2%	-5%	0.00	0.00	3.6%	1.1%	0.098	0.060	0.06%
Energy House Holding	0.021	-0.001	-3.17%	0.66	(2.93)	0.0%	16	9%	-6%	0.00	0.09	-22.5%	-17.0%	0.036	0.014	0.05%
Gulf Petroleum Investment	0.020	-0.001	-2.93%	0.22	(6.41)	0.0%	9	8%	-1%	0.19	9.52	-3.4%	-2.3%	0.023	0.012	0.03%
Senegy Holding	0.020	-0.001	-3.38%	0.40	(0.84)	0.0%	4	4%	-10%	0.03	1.59	-47.9%	-30.4%	0.027	0.014	0.01%
<b>Total Oil and Gas - 6 Companies</b>				<b>0.85</b>	<b>27.38</b>	<b>5.2%</b>	<b>236</b>			<b>0.22</b>	<b>11.20</b>	<b>3.10%</b>	<b>2.18%</b>			<b>0.74%</b>

Real estate	Price			Valuation Multiples			MKT Cap	Price Performance		Trading Indicators		ROE	ROA	52 Week (KD)		MKT Cap
	Company	Close (KD)	Day Δ	Day % Δ	PBV(X)	PE(X)		DY%	Mn KD	MTD(%)	YTD (%)			Value (Mn KD)	(Mn Shrs)	
Mabane Co.	0.657	-0.018	-2.67%	1.53	12.87	1.6%	726	-10%	-23%	1.15	1.74	11.9%	5.8%	0.877	0.434	2.29%
Salhia Real Estate	0.396	-0.005	-1.25%	1.20	9.10	5.0%	196	-1%	-5%	0.07	0.17	13.2%	5.8%	0.460	0.330	0.62%
Commercial Real Estate	0.101	0.000	0.00%	0.62	12.51	5.7%	182	0%	10%	0.02	0.19	5.0%	2.7%	0.112	0.085	0.58%
National Real Estate	0.074	-0.001	-1.20%	0.41	9.74	0.0%	111	0%	-15%	0.09	1.19	4.2%	2.4%	0.090	0.058	0.35%
Tamdeen Real Estate	0.254	0.001	0.40%	0.37	12.39	4.0%	102	-3%	-21%	0.00	0.00	3.0%	2.2%	0.343	0.241	0.32%
Kuwait Real Estate	0.099	-0.002	-2.08%	0.69	12.55	0.4%	88	4%	-7%	0.14	1.40	5.5%	2.2%	0.115	0.070	0.28%
United Real Estate	0.043	-0.001	-3.15%	0.25	(6.40)	0.0%	46	-12%	-31%	0.01	0.20	-3.9%	-1.2%	0.063	0.041	0.15%
First Dubai for Real Estate Development	0.040	0.000	-0.50%	0.54	43.87	1.0%	40	5%	14%	0.01	0.14	1.2%	1.0%	0.055	0.027	0.13%
Al Mazaya Holding	0.053	-0.001	-2.21%	0.42	(3.79)	0.1%	33	2%	-10%	0.00	0.09	-11.0%	-3.8%	0.067	0.047	0.10%
Ajial Real Estate Entertainment	0.153	-0.001	-0.65%	0.24	14.79	0.0%	30	3%	-14%	0.00	0.02	1.6%	1.4%	0.213	0.115	0.09%
Injazzat Real Estate Development	0.075	0.000	0.00%	0.48	(3.60)	9.2%	25	-5%	-6%	0.00	0.00	-13.4%	-7.0%	0.084	0.061	0.08%

# DAILY MARKET COVERAGE REPORT

NIC MENA SECURITIES - RESEARCH AND STUDIES DEP



Real estate Company	Price			Valuation Multiples			MKT Cap	Price Performance		Trading Indicators		ROE	ROA	52 Week (KD)		MKT Cap
	Close (KD)	Day Δ	Day % Δ	PBV(X)	PE(X)	DY%	Mn KD	MTD(%)	YTD (%)	Value (Mn KD)	(Mn Shrs)	(%)	(%)	High	Low	%
Munshaat Real Estate Projects	0.075	-0.003	-3.60%	0.51	27.64	2.8%	24	6%	1%	0.00	0.02	1.8%	0.7%	0.090	0.045	0.08%
Aayan Real Estate	0.057	0.001	1.96%	0.33	11.17	8.4%	24	-5%	-23%	0.00	0.00	3.0%	1.9%	0.080	0.048	0.07%
Al Argan International Real Estate	0.103	0.000	0.00%	0.30	33.38	4.7%	26	11%	-2%	0.00	0.00	0.9%	0.3%	0.135	0.060	0.08%
Al-Enmaa Real Estate	0.048	0.000	-0.62%	0.48	12.66	0.0%	22	2%	-23%	0.01	0.29	3.8%	2.4%	0.079	0.037	0.07%
Ream Real Estate	0.092	-0.005	-4.84%	0.70	(3.72)	2.4%	10	-55%	5%	0.00	0.00	-19.0%	-10.1%	0.204	0.060	0.03%
Arkan Al Kuwait Real Estate	0.085	-0.004	-4.94%	0.60	9.17	9.2%	21	4%	-5%	0.00	0.00	6.6%	3.5%	0.100	0.076	0.07%
Kuwait Business Town Real Estate	0.032	-0.001	-3.29%	0.30	8.25	0.2%	20	12%	-25%	0.03	1.05	3.6%	2.7%	0.046	0.022	0.06%
Dalqan Real Estate	0.318	0.000	0.00%	2.91	58.98	0.0%	19	0%	0%	0.00	0.00	4.9%	4.9%	0.318	0.318	0.06%
Sokouk Holding	0.026	0.000	-1.51%	0.32	(4.36)	0.0%	15	-5%	-26%	0.03	0.99	-7.4%	-4.7%	0.040	0.022	0.05%
Tijara and Realestate Investment	0.045	-0.002	-5.08%	0.42	11.79	4.4%	17	11%	-10%	0.00	0.02	3.6%	1.9%	0.055	0.034	0.05%
Al-Arabiya Real Estate	0.026	0.000	-0.76%	0.23	7.88	2.4%	13	-3%	-13%	0.01	0.23	2.9%	1.1%	0.033	0.020	0.04%
Aqar Real Estate Investments	0.062	0.000	-0.65%	0.45	5.14	8.1%	13	4%	-23%	0.01	0.14	8.7%	7.3%	0.089	0.058	0.04%
Mashaer Holding	0.060	0.000	-0.50%	0.46	6.41	0.0%	11	3%	-23%	0.00	0.01	7.1%	5.0%	0.086	0.048	0.03%
Investors Holding Group	0.018	0.000	-1.08%	0.93	(0.87)	0.0%	11	17%	129%	0.12	6.68	-106.5%	-57.2%	0.032	0.007	0.04%
Dar Al Thuraya Real Estate	0.069	0.001	1.18%	0.65	18.06	0.0%	10	-5%	-2%	0.00	0.00	3.6%	3.6%	0.190	0.040	0.03%
Osos Holding Group	0.090	0.004	4.65%	0.72	6.79	10.5%	9	3%	-10%	0.00	0.01	10.5%	7.0%	0.118	0.081	0.03%
Al Massaleh Real Estate	0.038	0.001	3.88%	0.42	(5.23)	0.0%	9	4%	-2%	0.00	0.00	-8.1%	-1.9%	0.040	0.026	0.03%
Abyaar Real Estate Development	0.007	0.000	0.00%	0.21	(0.51)	0.0%	8	0%	-6%	0.00	0.00	-40.9%	-12.4%	0.013	0.005	0.03%
Kuwait Remal Real Estate	0.022	-0.001	-2.22%	0.33	(3.02)	0.0%	7	9%	-10%	0.00	0.17	-11.0%	-3.9%	0.027	0.013	0.02%
Kuwait Real Estate Holding	0.027	0.000	0.00%	0.04	0.71	6.7%	5	2%	-7%	0.00	0.00	5.5%	2.2%	0.034	0.022	0.02%
Taameer Real Estate Investment	0.020	-0.001	-3.92%	0.29	(4.15)	0.0%	5	5%	-26%	0.05	2.61	-7.0%	-4.5%	0.032	0.013	0.01%
Sanam Real Estate	0.035	0.001	2.94%	0.44	47.40	0.0%	4	-8%	-19%	0.00	0.01	0.9%	0.9%	0.043	0.027	0.01%
Mena Real Estate	0.028	0.000	-1.39%	0.20	(63.30)	0.0%	4	1%	-31%	0.04	1.34	-0.3%	-0.2%	0.043	0.021	0.01%
Al Masaken International Real Estate Developr	0.026	0.000	0.00%	0.29	31.40	0.7%	3	-28%	-41%	0.02	0.70	0.9%	0.4%	0.074	0.025	0.01%
Real Estate Trade Centers	0.029	0.000	0.00%	0.16	165.69	0.0%	4	7%	25%	0.00	0.00	0.1%	0.1%	0.050	0.018	0.01%
Ajwan Gulf Real Estate	0.011	0.000	0.00%	0.19	(7.68)	0.0%	2	0%	-29%	0.00	0.00	-2.5%	-2.2%	0.016	0.009	0.01%
Effect Real Estate	0.021	0.000	0.00%	0.29	(8.85)	4.9%	2	0%	0%	0.00	0.00	-3.3%	-3.2%	0.021	0.021	0.01%
Al Mudon International Real Estate	0.021	-0.001	-4.95%	0.16	(10.91)	0.0%	2	29%	-16%	0.03	1.57	-1.5%	-1.4%	0.028	0.015	0.01%
<b>Total Real estate - 39 Companies</b>				<b>0.62</b>	<b>22.24</b>	<b>2.5%</b>	<b>1,900</b>			<b>1.84</b>	<b>20.98</b>	<b>2.79%</b>	<b>2.96%</b>			<b>5.99%</b>

# DAILY MARKET COVERAGE REPORT

NIC MENA SECURITIES - RESEARCH AND STUDIES DEP



Technology	Price			Valuation Multiples			MKT Cap	Price Performance		Trading Indicators		ROE	ROA	52 Week (KD)		MKT Cap
	Company	Close (KD)	Day Δ	Day % Δ	PBV(X)	PE(X)		DY%	Mn KD	MTD(%)	YTD (%)			Value (Mn KD)	(Mn Shrs)	
Automated Systems	0.070	0.000	0.00%	0.55	(67.90)	5.7%	7	-1%	-1%	0.00	0.00	-0.8%	-0.7%	0.087	0.051	0.02%
<b>Total Technology - 1 Companies</b>				<b>0.55</b>	<b>(67.90)</b>	<b>5.7%</b>	<b>7</b>			<b>0.00</b>	<b>0.00</b>	<b>-0.81%</b>	<b>-0.73%</b>			<b>0.02%</b>

Telecom	Price			Valuation Multiples			MKT Cap	Price Performance		Trading Indicators		ROE	ROA	52 Week (KD)		MKT Cap
	Company	Close (KD)	Day Δ	Day % Δ	PBV(X)	PE(X)		DY%	Mn KD	MTD(%)	YTD (%)			Value (Mn KD)	(Mn Shrs)	
Mobile Telecommunications	0.597	-0.005	-0.83%	1.99	11.91	5.2%	2,583	4%	0%	2.84	4.77	16.7%	4.6%	0.629	0.407	8.15%
Kuwait Telecommunications	0.845	-0.011	-1.29%	1.96	9.68	4.1%	422	1%	7%	0.01	0.01	20.2%	11.1%	0.870	0.680	1.33%
National Mobile Telecommunications	0.622	-0.012	-1.89%	0.55	10.35	10.4%	312	3%	-25%	0.02	0.02	5.3%	2.4%	0.835	0.550	0.98%
AAN Digital Services	0.013	0.000	-2.26%	0.39	42.40	0.0%	11	1%	-4%	0.07	5.16	0.9%	0.7%	0.021	0.009	0.04%
Hayat Communications	0.057	0.000	0.00%	0.49	24.15	0.0%	5	-3%	-24%	0.00	0.01	2.0%	0.8%	0.098	0.033	0.02%
<b>Telecom - 5 Companies</b>				<b>1.57</b>	<b>11.45</b>	<b>5.5%</b>	<b>3,333</b>			<b>2.93</b>	<b>9.97</b>	<b>13.70%</b>	<b>7.86%</b>			<b>10.52%</b>

Utilities	Price			Valuation Multiples			MKT Cap	Price Performance		Trading Indicators		ROE	ROA	52 Week (KD)		MKT Cap
	Company	Close (KD)	Day Δ	Day % Δ	PBV(X)	PE(X)		DY%	Mn KD	MTD(%)	YTD (%)			Value (Mn KD)	(Mn Shrs)	
Shamal Az-Zour Al-Oula Power & Water	0.325	-0.002	-0.61%	4.67	29.06	0.0%	358	2%	0%	0.94	2.88	16.1%	2.3%	0.500	0.297	1.13%
<b>Total Utilities - 1 Companies</b>				<b>4.67</b>	<b>29.06</b>	<b>0.0%</b>	<b>358</b>			<b>0.94</b>	<b>2.88</b>	<b>16.06%</b>	<b>2.26%</b>			<b>1.13%</b>

<b>Total Market 173 Companies</b>				<b>1.26</b>	<b>15.31</b>	<b>3.84%</b>	<b>31,694</b>			<b>67.74</b>	<b>233.62</b>	<b>8.26%</b>	<b>2.76%</b>			<b>100%</b>
-----------------------------------	--	--	--	-------------	--------------	--------------	---------------	--	--	--------------	---------------	--------------	--------------	--	--	-------------

## End of Report

The information contained in this document is proprietary to NIC and is for use only by the persons to whom it is issued. This document is confidential and may not be distributed either in part or in whole without the express agreement of NIC. It is intended solely for the use of the individual or entity to whom it is addressed and others authorized to receive it.

Note : ROE and ROA is calculated based on LTM net profit & shareholders' equity and LTM Operating Profits & Total Assets

Sources : National Investments Company Research and Studies Departments



شركة الاستثمار الوطنية  
NATIONAL INVESTMENTS COMPANY

Sharq, Al Mutanabi Street, Khaleejia Tower | P.O. Box 25667, Safat 13117, Kuwait

T.: +965 2226 6666 | Fax: +965 2226 6793 | [www.nic.com.kw](http://www.nic.com.kw)