



شركة الاستثمارات الوطنية  
NATIONAL INVESTMENTS COMPANY

**Bursa Kuwait – Daily Market Report**  
**MENA Securities – Research & Studies Dep.**

**Tuesday, September 8, 2020**

# DAILY MARKET COVERAGE REPORT

## NIC MENA SECURITIES - RESEARCH AND STUDIES DEP



Index	Close	DTD Chg Net	DTD (%)	YTD (%)	52W High	52W Low	MKT CAP Bn (KD)	PBV (X)	PE (X)	DY (%)
All Share Index	5,297.49	2.78	0.05%	-15.5%	6,416.43	4,339.58	30.55	1.18	14.82	3.99%
Premier Index	5,815.74	7.85	0.14%	-16.5%	7,172.32	4,498.65	22.51	1.63	13.60	3.71%
Main Index	4,274.36	-7.58	-0.18%	-12.6%	4,932.47	3,965.63	8.04	0.67	19.77	4.75%

Index	Value Mn(KD)	Volume (Mn share)
All Share Index	30.87	346.68
Premier Index	18.05	56.07
Main Index	12.82	290.61

Today's Top 5 Gainer %	Close KD	Value KD	DTD (%)
Salbookh Trading	0.034	24,028	12.13%
KGL Logistics	0.028	397,150	10.76%
Metal and Recycling	0.045	2	10.00%
Burgan for Well Drilling Tradi	0.083	174	9.21%
Al Massaleh Real Estate	0.035	313	9.03%

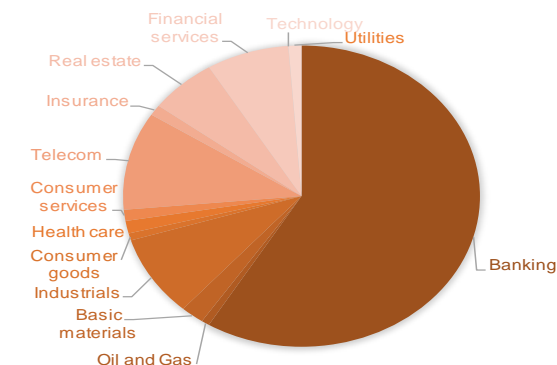
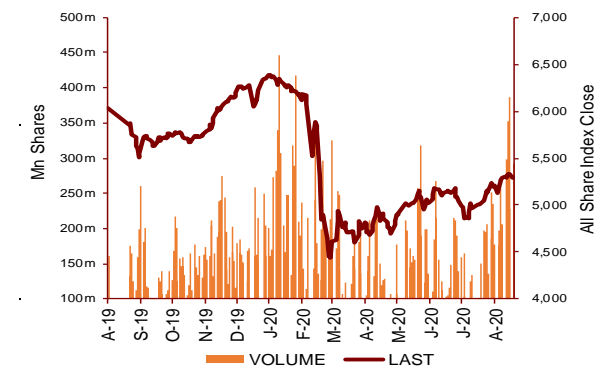
Today's Top 5 by Value	Close KD	DTD Chg	Trade Val Mn(KD)
Aayan Leasing and Investment	0.079	7.68%	3.05
Warba Bank	0.211	-0.94%	2.91
National Bank of Kuwait	0.851	-0.23%	1.92
Ahli United Bank BSC	0.224	0.00%	1.76
Kuwait Finance House	0.624	0.16%	1.63

Sector	Close	DTD Chg Net	DTD (%)	YTD (%)	52W High	52W Low	MKT CAP Bn (KD)	PBV (X)	PE (X)	DY (%)
Banking	1,225.97	-0.620	-0.05%	-17.3%	1,536.8	986.4	17.93	1.51	14.94	3.5%
Oil and Gas	1,108.10	19.260	1.77%	-10.5%	1,372.2	985.7	0.22	0.80	25.94	5.5%
Basic materials	770.50	-3.460	-0.45%	-15.2%	1,024.1	561.7	0.65	0.93	14.17	7.8%
Industrials	780.15	1.830	0.24%	-15.9%	937.5	602.9	2.66	0.85	12.68	5.2%
Consumer goods	778.48	3.430	0.44%	22.2%	810.7	548.6	0.23	1.54	94.35	2.2%
Health care	829.21	0.000	0.00%	-6.3%	921.9	815.0	0.41	4.19	48.62	1.0%
Consumer services	721.58	5.800	0.81%	-32.7%	1,083.1	674.8	0.37	0.83	34.66	4.8%
Telecom	1,050.23	2.100	0.20%	-6.0%	1,116.7	802.2	3.22	1.51	11.05	5.7%
Insurance	980.38	12.930	1.34%	2.8%	988.8	901.0	0.35	0.74	8.32	6.0%
Real estate	887.45	3.910	0.44%	-16.2%	1,083.4	763.2	1.86	0.61	21.80	2.6%
Financial services	914.57	-2.640	-0.29%	-15.4%	1,097.0	801.4	2.28	0.66	15.77	4.6%
Technology	507.79	24.000	4.96%	-1.4%	625.7	371.0	0.01	0.55	-67.70	5.7%
Utilities	855.26	2.630	0.31%	0.0%	1,042.1	781.6	0.36	4.67	29.06	0.0%
							<b>30.55</b>	<b>1.18</b>	<b>14.82</b>	<b>3.99%</b>

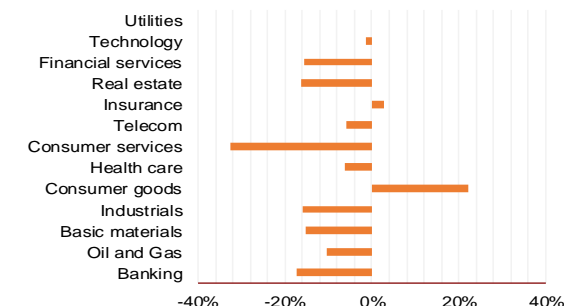
Market Breadth	UP	Down	No Chg
All Share Index	75	42	55
Premier Index	9	7	2
Main Index	66	35	53

Today's Top 5 Loser %	Close KD	Value KD	DTD (%)
National International Holdi	0.063	1,320	-9.17%
Kuwait Syrian Holding Co	0.025	351	-5.62%
UniCap Investment and Fir	0.040	86,875	-5.00%
Umm Al Qaiwain General I	0.091	9	-5.00%
Hayat Communications	0.067	349	-4.97%

Top 5 by Volume	Close KD	DTD Chg	Trade Vol Mn(Shrs)
Aayan Leasing and Investm	0.079	7.68%	39.78
Al Salam Group Holding	0.026	4.00%	34.58
Gulf Petroleum Investment	0.022	2.86%	34.24
Abyaar Real Estate Develc	0.007	1.41%	23.62
Taameer Real Estate Inves	0.021	2.48%	20.75



YTD Sector Performance %



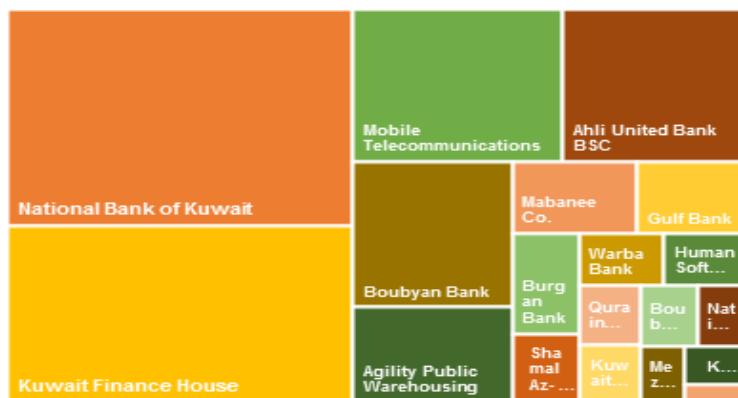
# DAILY MARKET COVERAGE REPORT

## NIC MENA SECURITIES - RESEARCH AND STUDIES DEP

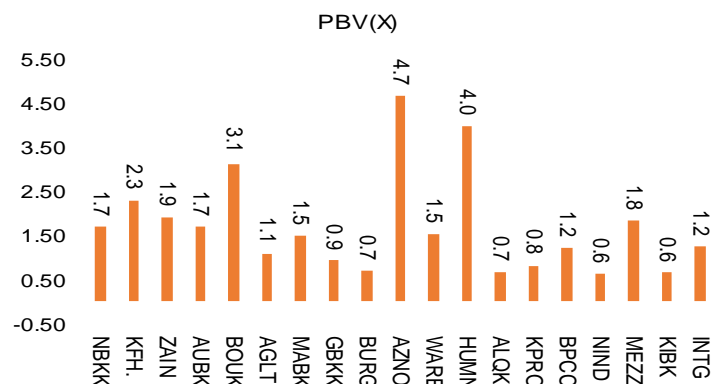


Premier Market	Price			Valuation Multiples			MKT Cap	Price Performance		Trading Indicators		ROE	ROA	52 Week (KD)	
	Close (KD)	Day Δ	Day % Δ	PBV(X)	PE(X)	DY%	Mn KD	MTD(%)	YTD (%)	Value (Mn KD)	(Mn Shrs)	(%)	(%)	High	Low
National Bank of Kuwait	0.851	-0.002	-0.23%	1.68	14.40	3.7%	5,779	-1%	-16%	1.92	2.25	11.7%	1.4%	1.062	0.654
Kuwait Finance House	0.624	0.001	0.16%	2.30	18.86	2.6%	4,735	0%	-15%	1.63	2.61	12.2%	1.3%	0.761	0.473
Mobile Telecommunications	0.573	0.001	0.17%	1.91	11.43	5.4%	2,479	-3%	-4%	1.07	1.87	16.7%	4.6%	0.604	0.407
Ahli United Bank BSC	0.224	0.000	0.00%	1.69	9.87	5.4%	2,162	-4%	-24%	1.76	7.86	17.1%	1.8%	0.311	0.160
Boubyan Bank	0.594	0.011	1.89%	3.13	28.71	1.1%	1,799	3%	-2%	1.40	2.37	10.9%	1.2%	0.638	0.380
Agility Public Warehousing	0.621	-0.001	-0.16%	1.08	13.70	2.9%	1,188	0%	-12%	0.54	0.87	7.9%	4.2%	0.748	0.357
Mabane Co.	0.635	0.002	0.32%	1.48	12.44	1.6%	702	0%	-25%	0.39	0.62	11.9%	5.8%	0.877	0.434
Gulf Bank	0.211	-0.001	-0.47%	0.92	9.63	4.7%	613	0%	-30%	1.01	4.75	9.6%	1.0%	0.317	0.180
Burgan Bank	0.198	0.000	0.00%	0.69	6.13	5.8%	519	0%	-35%	0.16	0.82	11.3%	1.2%	0.340	0.175
Shamal Az-Zour Al-Oula Power & Water	0.325	0.001	0.31%	4.67	29.06	0.0%	358	2%	0%	1.46	4.49	16.1%	2.3%	0.500	0.297
Warba Bank	0.211	-0.002	-0.94%	1.52	20.09	0.0%	332	6%	-19%	2.91	13.79	7.6%	0.5%	0.279	0.164
Human Soft Holding	2.634	0.015	0.57%	3.99	8.93	7.0%	320	4%	-13%	0.59	0.23	44.6%	30.3%	3.470	1.944
Qurain Petrochemical Industries	0.275	-0.002	-0.72%	0.67	9.95	5.6%	281	-4%	-11%	0.33	1.19	6.7%	3.6%	0.341	0.163
Kuwait Projects Company Holding	0.152	-0.001	-0.65%	0.81	9.18	6.1%	275	2%	-30%	0.30	1.97	8.9%	0.3%	0.231	0.147
Boubyan Petrochemical	0.539	-0.002	-0.37%	1.22	23.00	9.6%	272	1%	-19%	0.30	0.56	5.3%	2.1%	0.800	0.395
National Industries Group Holding	0.162	0.001	0.62%	0.61	4.99	6.7%	231	4%	-33%	0.50	3.13	12.3%	3.7%	0.247	0.121
Mezzan Holding	0.632	0.002	0.32%	1.82	34.15	2.6%	192	-3%	26%	0.17	0.28	5.3%	2.2%	0.665	0.428
Kuwait International Bank	0.178	0.001	0.56%	0.65	10.58	5.6%	181	4%	-31%	0.75	4.20	6.1%	0.6%	0.270	0.162
Integrated Holding	0.386	0.016	4.32%	1.24	10.75	10.4%	85	11%	-30%	0.85	2.22	11.5%	8.5%	0.600	0.342
<b>Total</b>		<b>7.85</b>	<b>0.14%</b>	<b>1.63</b>	<b>13.60</b>	<b>3.71%</b>	<b>22,505</b>	<b>-0.5%</b>	<b>-16.5%</b>	<b>18.05</b>	<b>56.07</b>	<b>11.96%</b>	<b>1.55%</b>		

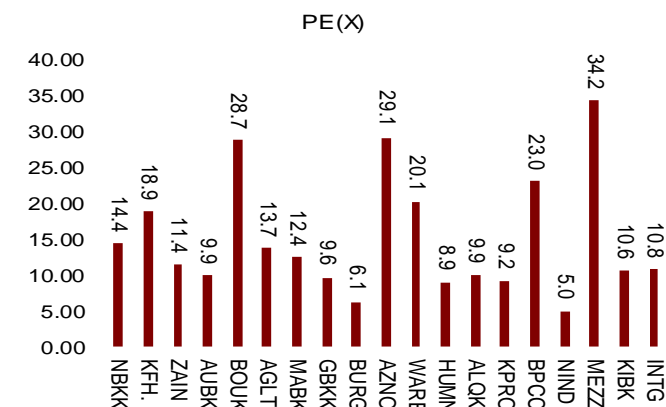
Market Capitalization



Price to Book Value

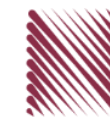


Price to Earning Value

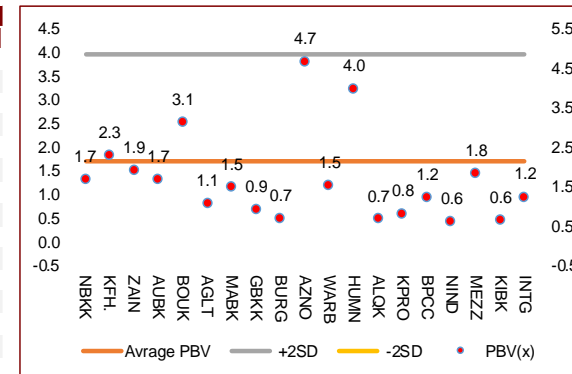


# DAILY MARKET COVERAGE REPORT

## NIC MENA SECURITIES - RESEARCH AND STUDIES DEP



Premier Market Company	Price			Valuation Multiples			MKT Cap Mn KD	Price Performance		ROE (%)	ROA (%)
	Close (KD)	Day Δ	Day % Δ	PBV(X)	PE(X)	DY%		MTD(%)	YTD (%)		
National Bank of Kuwait	0.851	-0.002	-0.23%	1.68	14.4	3.7%	5,779	-0.7%	-16.2%	11.7%	1.4%
Kuwait Finance House	0.624	0.001	0.16%	2.30	18.9	2.6%	4,735	-0.2%	-15.2%	12.2%	1.3%
Mobile Telecommunications	0.573	0.001	0.17%	1.91	11.4	5.4%	2,479	-2.9%	-4.5%	16.7%	4.6%
Ahli United Bank BSC	0.224	0.000	0.00%	1.69	9.9	5.4%	2,162	-3.9%	-23.7%	17.1%	1.8%
Boubyan Bank	0.594	0.011	1.89%	3.13	28.7	1.1%	1,799	3.1%	-2.4%	10.9%	1.2%
Agility Public Warehousing	0.621	-0.001	-0.16%	1.08	13.7	2.9%	1,188	0.0%	-12.3%	7.9%	4.2%
Mabane Co.	0.635	0.002	0.32%	1.48	12.4	1.6%	702	0.3%	-25.2%	11.9%	5.8%
Gulf Bank	0.211	-0.001	-0.47%	0.92	9.6	4.7%	613	-0.5%	-30.0%	9.6%	1.0%
Burgan Bank	0.198	0.000	0.00%	0.69	6.1	5.8%	519	0.0%	-34.9%	11.3%	1.2%
Shamal Az-Zour Al-Oula Power & Water	0.325	0.001	0.31%	4.67	29.1	0.0%	358	1.6%	0.0%	16.1%	2.3%
Warba Bank	0.211	-0.002	-0.94%	1.52	20.1	0.0%	332	6.0%	-19.4%	7.6%	0.5%
Human Soft Holding	2.634	0.015	0.57%	3.99	8.9	7.0%	320	3.7%	-12.9%	44.6%	30.3%
Qurain Petrochemical Industries	0.275	-0.002	-0.72%	0.67	9.9	5.6%	281	-3.5%	-11.3%	6.7%	3.6%
Kuwait Projects Company Holding	0.152	-0.001	-0.65%	0.81	9.2	6.1%	275	2.0%	-29.6%	8.9%	0.3%
Boubyan Petrochemical	0.539	-0.002	-0.37%	1.22	23.0	9.6%	272	0.6%	-19.3%	5.3%	2.1%
National Industries Group Holding	0.162	0.001	0.62%	0.61	5.0	6.7%	231	3.8%	-32.8%	12.3%	3.7%
Mezzan Holding	0.632	0.002	0.32%	1.82	34.2	2.6%	192	-2.8%	26.4%	5.3%	2.2%
Kuwait International Bank	0.178	0.001	0.56%	0.65	10.6	5.6%	181	4.1%	-31.4%	6.1%	0.6%
Integrated Holding	0.386	0.016	4.32%	1.24	10.8	10.4%	85	10.6%	-29.8%	11.5%	8.5%
<b>Total</b>	<b>7.85</b>	<b>0.14%</b>	<b>1.63</b>	<b>13.60</b>	<b>3.71%</b>	<b>22,505</b>	<b>-0.5%</b>	<b>-16.5%</b>	<b>11.96%</b>	<b>1.55%</b>	



Premier Market Discription	Price			Moving Average		RSI 14 Day	MKT Cap Mn KD	Price Performance		52 Week (KD)	
	Close (KD)	Day Δ	Day % Δ	50 Day	200 Day			MTD(%)	YTD (%)	High	Low
Premier Index	5,816	7.85	0.14%	5,617	5,914	56	22,505	-0.5%	-16.5%	7,172	4,499

### Top 5 Performrs (Today's Price Change)

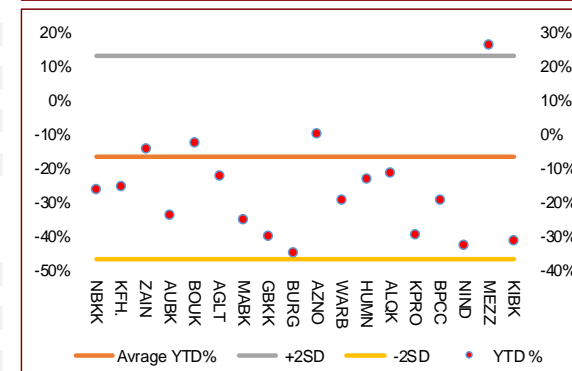
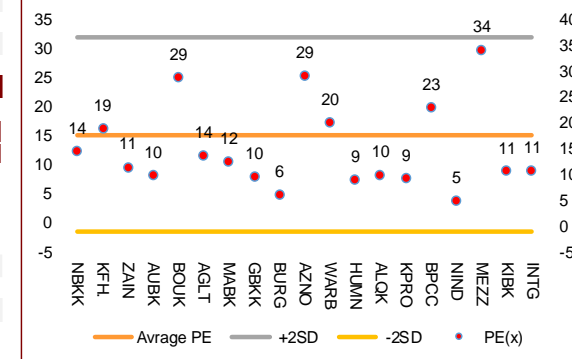
Integrated Holding	0.386	0.016	4.32%	0.385	0.457	30	85	10.6%	-29.8%	0.600	0.342
Boubyan Bank	0.594	0.011	1.89%	0.543	0.539	73	1,799	3.1%	-2.4%	0.638	0.380
National Industries Group Holding	0.162	0.001	0.62%	0.160	0.189	50	231	3.8%	-32.8%	0.247	0.121
Human Soft Holding	2.634	0.015	0.57%	2.682	2.825	55	320	3.7%	-12.9%	3.470	1.944
Kuwait International Bank	0.178	0.001	0.56%	0.172	0.210	69	181	4.1%	-31.4%	0.270	0.162

### Middel Performrs (Today's Price Change)

Mabane Co.	0.635	0.002	0.32%	0.640	0.689	29	702	0.3%	-25.2%	0.877	0.434
Mezzan Holding	0.632	0.002	0.32%	0.604	0.551	65	192	-2.8%	26.4%	0.665	0.428
Shamal Az-Zour Al-Oula Power & Water	0.325	0.001	0.31%	0.099	0.025	29	358	1.6%	0.0%	0.500	0.297
Mobile Telecommunications	0.573	0.001	0.17%	0.564	0.547	30	2,479	-2.9%	-4.5%	0.604	0.407
Kuwait Finance House	0.624	0.001	0.16%	0.605	0.637	54	4,735	-0.2%	-15.2%	0.761	0.473
Ahli United Bank BSC	0.224	0.000	0.00%	0.198	0.228	64	2,162	-3.9%	-23.7%	0.311	0.160
Burgan Bank	0.198	0.000	0.00%	0.192	0.239	68	519	0.0%	-34.9%	0.340	0.175
Agility Public Warehousing	0.621	-0.001	-0.16%	0.637	0.614	36	1,188	0.0%	-12.3%	0.748	0.357
National Bank of Kuwait	0.851	-0.002	-0.23%	0.816	0.855	62	5,779	-0.7%	-16.2%	1.062	0.654

### Bottom 5 Performrs (Today's Price Change)

Warba Bank	0.211	-0.002	-0.94%	0.201	0.222	72	332	6.0%	-19.4%	0.279	0.164
Qurain Petrochemical Industries	0.275	-0.002	-0.72%	0.283	0.269	36	281	-3.5%	-11.3%	0.341	0.163
Kuwait Projects Company Holding	0.152	-0.001	-0.65%	0.155	0.183	53	275	2.0%	-29.6%	0.231	0.147
Gulf Bank	0.211	-0.001	-0.47%	0.207	0.242	64	613	-0.5%	-30.0%	0.317	0.180
Boubyan Petrochemical	0.539	-0.002	-0.37%	0.575	0.590	44	272	0.6%	-19.3%	0.800	0.395



# DAILY MARKET COVERAGE REPORT

## NIC MENA SECURITIES - RESEARCH AND STUDIES DEP



Banking Sector		Price			Valuation Multiples			MKT Cap	Price Performance		Trading Indicators		ROE	ROA	52 Week (KD)	
Company	Close (KD)	Day Δ	Day % Δ	PBV(X)	PE(X)	DY%	Mn KD	MTD(%)	YTD (%)	Value (Mn KD)	(Mn Shrs)	(%)	(%)	High	Low	
National Bank of Kuwait	0.851	-0.002	-0.23%	1.68	14.40	3.7%	5,779	-1%	-16%	1.92	2.25	11.7%	1.4%	1.062	0.654	
Kuwait Finance House	0.624	0.001	0.16%	2.30	18.86	2.6%	4,735	0%	-15%	1.63	2.61	12.2%	1.3%	0.761	0.473	
Ahli United Bank BSC	0.224	0.000	0.00%	1.69	9.87	5.4%	2,162	-4%	-24%	1.76	7.86	17.1%	1.8%	0.311	0.160	
Boubyan Bank	0.594	0.011	1.89%	3.13	28.71	1.1%	1,799	3%	-2%	1.40	2.37	10.9%	1.2%	0.638	0.380	
Commercial Bank of Kuwait	0.480	-0.020	-4.00%	1.27	0.00	3.9%	927	-2%	-7%	0.02	0.03	0.0%	0.0%	0.555	0.465	
Gulf Bank	0.211	-0.001	-0.47%	0.92	9.63	4.7%	613	0%	-30%	1.01	4.75	9.6%	1.0%	0.317	0.180	
Burgan Bank	0.198	0.000	0.00%	0.69	6.13	5.8%	519	0%	-35%	0.16	0.82	11.3%	1.2%	0.340	0.175	
Ahli United Bank	0.272	0.002	0.74%	1.16	9.64	5.0%	530	5%	-16%	0.15	0.54	12.1%	1.3%	0.330	0.225	
Warba Bank	0.211	-0.002	-0.94%	1.52	20.09	0.0%	332	6%	-19%	2.91	13.79	7.6%	0.5%	0.279	0.164	
Al Ahli Bank of Kuwait	0.178	0.002	1.14%	0.51	9.97	7.9%	286	5%	-30%	0.36	2.01	5.1%	0.6%	0.320	0.156	
Kuwait International Bank	0.178	0.001	0.56%	0.65	10.58	5.6%	181	4%	-31%	0.75	4.20	6.1%	0.6%	0.270	0.162	
Ithmaar Holding	0.022	0.000	0.00%	0.08	323.35	0.0%	65	0%	0%	0.00	0.00	0.0%	0.0%	0.022	0.022	
<b>Total Banking Sector - 12 Companies</b>				<b>1.51</b>	<b>14.94</b>	<b>3.5%</b>	<b>17,929</b>			<b>12.06</b>	<b>41.23</b>	<b>10.13%</b>	<b>1.18%</b>			

Basic materials		Price			Valuation Multiples			MKT Cap	Price Performance		Trading Indicators		ROE	ROA	52 Week (KD)	
Company	Close (KD)	Day Δ	Day % Δ	PBV(X)	PE(X)	DY%	Mn KD	MTD(%)	YTD (%)	Value (Mn KD)	(Mn Shrs)	(%)	(%)	High	Low	
Boubyan Petrochemical	0.539	-0.002	-0.37%	1.22	23.00	9.6%	272	1%	-19%	0.30	0.56	5.3%	2.1%	0.800	0.395	
Qurain Petrochemical Industries	0.275	-0.002	-0.72%	0.67	9.95	5.6%	281	-4%	-11%	0.33	1.19	6.7%	3.6%	0.341	0.163	
Al Kout Industrial Projects	0.769	0.000	0.00%	2.50	16.21	6.5%	78	0%	-10%	0.00	0.00	15.4%	11.3%	0.850	0.769	
Kuwait Foundry	0.242	0.002	0.83%	0.81	19.56	22.0%	18	4%	-26%	0.00	0.00	4.1%	3.8%	0.564	0.192	
<b>Total Basic materials - 4 Companies</b>				<b>0.93</b>	<b>14.17</b>	<b>7.8%</b>	<b>648</b>			<b>0.63</b>	<b>1.75</b>	<b>6.57%</b>	<b>5.07%</b>			

Consumer goods		Price			Valuation Multiples			MKT Cap	Price Performance		Trading Indicators		ROE	ROA	52 Week (KD)	
Company	Close (KD)	Day Δ	Day % Δ	PBV(X)	PE(X)	DY%	Mn KD	MTD(%)	YTD (%)	Value (Mn KD)	(Mn Shrs)	(%)	(%)	High	Low	
Mezzan Holding	0.632	0.002	0.32%	1.82	34.15	2.6%	192	-3%	26%	0.17	0.28	5.3%	2.2%	0.665	0.428	
Livestock Transport and Trading	0.187	0.002	1.08%	0.97	33.33	0.1%	39	1%	7%	0.00	0.02	2.9%	2.0%	0.200	0.152	
Danah Al Safat Foodstuff	0.012	0.000	0.00%	0.25	(0.30)	0.1%	1	0%	-25%	0.00	0.00	-84.8%	-43.2%	0.029	0.010	
<b>Total Basic materials - 3 Companies</b>				<b>1.54</b>	<b>94.35</b>	<b>2.2%</b>	<b>233</b>			<b>0.18</b>	<b>0.30</b>	<b>1.64%</b>	<b>0.90%</b>			

# DAILY MARKET COVERAGE REPORT

## NIC MENA SECURITIES - RESEARCH AND STUDIES DEP



Consumer services		Price			Valuation Multiples			MKT Cap	Price Performance		Trading Indicators		ROE	ROA	52 Week (KD)	
Company	Close (KD)	Day Δ	Day % Δ	PBV(X)	PE(X)	DY%	Mn KD	MTD(%)	YTD (%)	Value (Mn KD)	(Mn Shrs)	(%)	(%)	High	Low	
Jazeera Airways	0.579	0.010	1.76%	2.88	7.75	6.0%	116	3%	-47%	0.08	0.14	37.1%	9.0%	1.110	0.372	
Kuwait National Cinema	0.656	0.007	1.08%	0.75	7.10	7.4%	61	-2%	-37%	0.05	0.07	10.6%	7.2%	1.050	0.600	
Al Soor Fuel Marketing	0.111	0.001	0.91%	0.68	12.99	4.5%	45	1%	-11%	0.00	0.01	5.3%	3.7%	0.129	0.096	
Oula Fuel Marketing	0.111	0.002	1.83%	0.67	11.62	5.3%	45	0%	-13%	0.00	0.01	5.7%	3.2%	0.134	0.095	
Sultan Center Food Products	0.054	-0.001	-1.64%	0.67	13.61	0.0%	31	-2%	4%	0.00	0.07	4.9%	0.7%	0.060	0.036	
IFA Hotels and Resorts	0.024	0.000	-0.42%	0.85	(0.65)	0.0%	15	-5%	-57%	0.00	0.04	-131.5%	-8.1%	0.062	0.021	
Jiyad Holding	0.036	-0.001	-1.38%	0.32	7.12	0.0%	12	8%	-9%	0.00	0.09	4.5%	2.8%	0.047	0.029	
Kuwait Resorts	0.047	0.000	0.00%	0.32	8.61	0.0%	9	3%	-18%	0.02	0.39	3.8%	3.2%	0.060	0.038	
Future Kid Entertainment and Real Estate	0.077	0.000	0.00%	0.44	28.90	15.1%	8	0%	-13%	0.00	0.00	1.5%	0.9%	0.110	0.069	
Al Eid Food	0.064	-0.001	-1.39%	0.36	4.26	0.0%	6	-4%	-19%	0.02	0.28	8.4%	6.1%	0.096	0.046	
Alrai Media Group	0.037	0.000	0.00%	0.83	(2.41)	0.0%	9	0%	-2%	0.00	0.00	-34.2%	-20.0%	0.049	0.030	
Kuwait Hotels	0.086	-0.002	-1.71%	1.21	(4.97)	0.0%	5	-2%	-14%	0.00	0.00	-24.4%	-13.2%	0.101	0.069	
Palms Agro Production	0.061	0.000	0.00%	0.51	(43.00)	16.3%	3	8%	52%	0.00	0.00	-1.2%	-0.9%	0.062	0.025	
Kuwait Cable Vision	0.014	0.000	0.00%	0.52	(11.65)	0.0%	1	0%	0%	0.00	0.00	-4.5%	-3.0%	0.026	0.012	
<b>Total Consumer services - 14 Companies</b>				<b>0.83</b>	<b>34.66</b>	<b>4.8%</b>	<b>365</b>			<b>0.18</b>	<b>1.09</b>	<b>2.38%</b>	<b>2.72%</b>			

Financial services		Price			Valuation Multiples			MKT Cap	Price Performance		Trading Indicators		ROE	ROA	52 Week (KD)	
Company	Close (KD)	Day Δ	Day % Δ	PBV(X)	PE(X)	DY%	Mn KD	MTD(%)	YTD (%)	Value (Mn KD)	(Mn Shrs)	(%)	(%)	High	Low	
Egypt Kuwait Holding	0.370	-0.004	-1.07%	2.19	12.49	5.3%	379	-1%	-18%	0.00	0.00	17.6%	7.1%	0.500	0.318	
Kuwait Projects Company Holding	0.152	-0.001	-0.65%	0.81	9.18	6.1%	275	2%	-30%	0.30	1.97	8.9%	0.3%	0.231	0.147	
National Industries Group Holding	0.162	0.001	0.62%	0.61	4.99	6.7%	231	4%	-33%	0.50	3.13	12.3%	3.7%	0.247	0.121	
GFH Financial Group	0.052	0.001	0.98%	0.56	7.05	5.5%	175	2%	-25%	0.04	0.84	8.0%	1.3%	0.074	0.042	
Alimtiiaz Investment Group	0.090	0.001	1.59%	0.43	4.66	8.9%	92	5%	-29%	0.36	4.04	9.1%	5.2%	0.137	0.071	
Commercial Facilities	0.181	0.000	0.00%	0.56	6.97	9.3%	92	-2%	-17%	0.00	0.00	8.0%	4.2%	0.235	0.179	
National Investments	0.143	0.000	0.00%	0.63	10.64	5.7%	114	21%	4%	0.36	2.50	5.9%	5.0%	0.155	0.080	
Tamdeen Investment	0.336	-0.017	-4.82%	0.41	13.93	3.5%	115	42%	2%	0.00	0.00	3.0%	2.2%	0.400	0.199	
Kuwait Investment	0.118	-0.005	-4.07%	0.51	3.69	8.5%	65	5%	-21%	0.18	1.49	13.9%	6.0%	0.172	0.095	
Noor Financial Investment	0.167	0.000	0.00%	1.02	8.17	3.0%	66	3%	40%	0.07	0.45	12.5%	7.5%	0.184	0.076	
Al Bareeq Holding	0.102	0.000	0.00%	1.07	20.37	0.0%	45	-3%	2%	0.00	0.00	5.2%	5.0%	0.110	0.100	



# DAILY MARKET COVERAGE REPORT

## NIC MENA SECURITIES - RESEARCH AND STUDIES DEP



Financial services	Price			Valuation Multiples			MKT Cap	Price Performance		Trading Indicators		ROE	ROA	52 Week (KD)		
	Company	Close (KD)	Day Δ	Day % Δ	PBV(X)	PE(X)	DY%	Mn KD	MTD(%)	YTD (%)	Value (Mn KD)	(Mn Shrs)	(%)	(%)	High	Low
Kuwait Financial Centre	0.081	0.000	-0.12%	0.41	5.55	6.1%	39	-1%	-25%	0.03	0.35	7.3%	3.5%	0.121	0.070	
Aayan Leasing and Investment	0.079	0.006	7.68%	0.92	(4.31)	2.3%	63	32%	67%	3.05	39.78	-21.4%	-4.9%	0.070	0.032	
Arabi Group Holdings	0.198	0.000	0.00%	1.07	(19.90)	0.0%	33	0%	-28%	0.00	0.00	-5.4%	-0.6%	0.337	0.076	
Arzan Financial Group for Financing and Invest	0.059	-0.003	-4.23%	0.47	42.75	0.0%	47	1%	149%	1.11	18.39	1.1%	0.7%	0.064	0.022	
Privatization Holding	0.041	-0.001	-2.15%	0.30	(36.97)	0.0%	25	-2%	-17%	0.01	0.19	-0.8%	-0.5%	0.059	0.037	
Asiya Capital Investments	0.032	0.001	1.61%	0.34	16.29	0.2%	25	2%	-23%	0.00	0.08	2.1%	2.0%	0.041	0.029	
KAMCO Investment	0.070	0.002	2.34%	0.43	7.91	0.0%	24	0%	-22%	0.06	0.86	5.4%	2.3%	0.111	0.060	
Kuwait and Middle East Financial Investment	0.127	-0.003	-2.31%	2.06	50.72	0.0%	33	9%	40%	0.06	0.44	4.1%	3.2%	0.132	0.063	
Umm Al Qaiwain General Investment Co	0.091	-0.005	-5.00%	0.61	17.14	4.0%	33	3%	37%	0.00	0.00	3.6%	3.3%	0.096	0.052	
Securities House	0.045	0.002	3.72%	0.61	(65.20)	0.0%	25	11%	-2%	0.49	11.04	-0.9%	-0.7%	0.050	0.027	
Gulf Investment House	0.099	0.003	2.60%	1.11	182.20	0.0%	40	6%	53%	0.32	3.30	0.6%	0.5%	0.100	0.038	
Coast Investment and Development	0.034	0.000	1.18%	0.36	34.28	0.0%	20	1%	-14%	0.01	0.16	1.1%	1.0%	0.045	0.026	
Bayan Investment	0.048	0.000	0.00%	0.48	(24.65)	0.0%	17	0%	25%	0.00	0.00	-1.9%	-0.8%	0.053	0.031	
First Investment	0.029	0.001	1.75%	0.45	(0.40)	0.0%	19	-4%	-16%	0.02	0.74	-113.6%	-62.0%	0.045	0.022	
Al Madar Finance and Investment	0.087	0.000	0.11%	0.79	13.02	0.0%	18	2%	-6%	0.04	0.41	6.1%	5.0%	0.148	0.062	
Inovent BSC Public	0.068	0.001	1.49%	0.47	9.12	8.7%	20	20%	7%	0.03	0.50	5.2%	2.9%	0.072	0.044	
Al Manar Financing and Leasing	0.049	0.003	6.74%	0.45	12.65	1.0%	15	6%	-5%	0.00	0.00	3.5%	2.7%	0.060	0.037	
Osoul Investment	0.082	0.002	1.86%	0.62	6.89	0.0%	13	-2%	9%	0.01	0.11	9.0%	8.2%	0.121	0.070	
National International Holding	0.063	-0.006	-9.17%	0.33	7.63	4.6%	13	8%	-10%	0.00	0.02	4.4%	3.3%	0.081	0.049	
Kuwait Finance and Investment	0.046	0.002	4.74%	0.37	20.83	0.0%	14	3%	-6%	0.08	1.70	1.8%	1.2%	0.058	0.038	
Manazel Holding	0.033	0.001	2.19%	0.72	21.02	0.0%	14	-1%	-17%	0.05	1.46	3.4%	0.8%	0.048	0.021	
Amar Finance and Leasing	0.049	0.000	0.00%	0.55	41.36	0.0%	10	-4%	30%	0.00	0.00	1.3%	1.2%	0.064	0.037	
UniCap Investment and Finance	0.040	-0.002	-5.00%	0.40	(19.97)	0.0%	9	8%	-27%	0.09	2.15	-2.0%	-1.0%	0.057	0.035	
Gulf North Africa Holding	0.056	0.000	0.00%	0.74	71.76	0.0%	8	0%	-10%	0.00	0.00	1.0%	0.6%	0.062	0.052	
International Financial Advisors	0.031	0.000	0.00%	0.93	(0.42)	2.1%	8	0%	-42%	0.00	0.00	-222.8%	-19.3%	0.060	0.027	
Kuwait Syrian Holding Co	0.025	-0.002	-5.62%	0.22	(12.88)	0.0%	4	-5%	-20%	0.00	0.01	-1.7%	-1.1%	0.043	0.022	
Amwal International Investment	0.034	0.000	0.00%	0.64	12.68	0.0%	6	-5%	14%	0.00	0.00	5.0%	2.6%	0.055	0.030	
Al Salam Group Holding	0.026	0.001	4.00%	0.23	196.28	0.0%	7	12%	-11%	0.90	34.58	0.1%	0.1%	0.038	0.018	
Warba Capital Holding	0.047	0.000	0.00%	0.53	(7.53)	0.0%	5	-5%	-27%	0.00	0.00	-7.0%	-6.2%	0.115	0.045	
Credit Rating and Collection	0.035	0.000	0.00%	1.08	(23.69)	0.0%	6	0%	76%	0.00	0.00	-4.6%	-4.3%	0.037	0.019	
National Consumer Holding	0.052	0.000	0.00%	0.58	256.31	0.0%	5	-5%	-5%	0.00	0.00	0.2%	0.2%	0.100	0.010	
Al Madina for Finance and Investment	0.012	0.000	0.00%	0.41	(2.31)	0.0%	5	15%	-18%	0.08	6.49	-17.9%	-7.7%	0.019	0.009	
Ektitab Holding	0.015	0.000	-2.63%	0.36	(10.42)	0.0%	5	16%	-1%	0.04	2.66	-3.4%	-3.0%	0.017	0.010	
Al Deera Holding	0.016	0.000	0.00%	0.70	(9.02)	0.0%	3	0%	-20%	0.00	0.00	-7.7%	-1.7%	0.022	0.011	
Al Mal Investment Company	0.009	0.000	1.09%	0.41	(0.87)	0.0%	3	3%	-6%	0.01	1.43	-47.6%	-23.3%	0.016	0.008	
Gulf Franchising Holding	0.050	-0.003	-4.73%	0.79	(2.18)	0.0%	2	-14%	-33%	0.00	0.01	-36.2%	-10.8%	0.160	0.001	
Tamkeen Holding	0.005	0.000	0.00%	0.05	(7.18)	0.0%	0	0%	0%	0.00	0.00	-0.7%	-0.7%	0.005	0.005	
<b>Total Financial services - 48 Companies</b>				<b>0.66</b>	<b>15.77</b>	<b>4.6%</b>	<b>2,285</b>				<b>8.28</b>	<b>141.29</b>	<b>4.18%</b>	<b>4.11%</b>		

# DAILY MARKET COVERAGE REPORT

## NIC MENA SECURITIES - RESEARCH AND STUDIES DEP



Health care	Price			Valuation Multiples			MKT Cap	Price Performance		Trading Indicators		ROE	ROA	52 Week (KD)	
Company	Close (KD)	Day Δ	Day % Δ	PBV(X)	PE(X)	DY%	Mn KD	MTD(%)	YTD (%)	Value (Mn KD)	(Mn Shrs)	(%)	(%)	High	Low
Al-Maidan Clinic for Oral Health Services	1.220	0.000	0.00%	7.90	47.78	0.6%	305	0%	0%	0.00	0.00	16.5%	10.9%	1.240	1.220
Advanced Technology	0.627	0.000	0.00%	1.63	51.04	2.4%	94	0%	-23%	0.00	0.00	3.2%	0.7%	0.930	0.580
Yiaco Medical	0.707	0.000	0.00%	6.06	52.72	0.0%	12	0%	0%	0.00	0.00	11.5%	0.6%	0.707	0.707
<b>Total Health care - 3 Companies</b>				<b>4.19</b>	<b>48.62</b>	<b>1.0%</b>	<b>411</b>			<b>0.00</b>	<b>0.00</b>	<b>8.61%</b>	<b>4.68%</b>		

Industrials	Price			Valuation Multiples			MKT Cap	Price Performance		Trading Indicators		ROE	ROA	52 Week (KD)	
Company	Close (KD)	Day Δ	Day % Δ	PBV(X)	PE(X)	DY%	Mn KD	MTD(%)	YTD (%)	Value (Mn KD)	(Mn Shrs)	(%)	(%)	High	Low
Agility Public Warehousing	0.621	-0.001	-0.16%	1.08	13.70	2.9%	1,188	0%	-12%	0.54	0.87	7.9%	4.2%	0.748	0.357
Human Soft Holding	2.634	0.015	0.57%	3.99	8.93	7.0%	320	4%	-13%	0.59	0.23	44.6%	30.3%	3.470	1.944
ALAFCO Aviation Lease and Finance	0.158	0.000	0.00%	0.47	8.50	6.3%	150	1%	-42%	0.12	0.74	5.5%	1.4%	0.278	0.138
Kuwait Cement	0.174	0.000	0.00%	0.59	30.88	8.5%	124	0%	-29%	0.03	0.15	1.9%	1.3%	0.271	0.144
Gulf Cable and Electrical Industries	0.735	0.002	0.27%	0.88	36.45	3.7%	154	14%	51%	0.34	0.47	2.4%	2.2%	0.714	0.390
Integrated Holding	0.386	0.016	4.32%	1.24	10.75	10.4%	85	11%	-30%	0.85	2.22	11.5%	8.5%	0.600	0.342
Kuwait Portland Cement	0.774	-0.026	-3.25%	1.04	10.22	12.7%	78	7%	-21%	0.05	0.06	10.2%	8.2%	1.210	0.683
United Projects for Aviation Services	0.465	0.000	0.00%	0.98	7.96	4.5%	74	0%	-9%	0.00	0.00	12.3%	7.8%	0.512	0.367
Heavy Engineering Industries and Shipbuilding	0.370	0.002	0.54%	1.07	5.94	7.9%	67	1%	-9%	0.11	0.29	18.0%	5.9%	0.419	0.298
Educational Holding Group	0.300	0.001	0.33%	1.74	9.50	5.0%	74	0%	-32%	0.00	0.01	18.3%	16.7%	0.475	0.228
National Industries	0.156	0.000	0.00%	0.65	12.71	6.3%	55	-5%	-5%	0.01	0.10	5.1%	3.8%	0.176	0.143
ACICO Industries	0.099	0.000	0.00%	0.32	12.89	5.0%	33	5%	-26%	0.00	0.02	2.5%	0.6%	0.145	0.081
Kuwait Company for Process Plant Constructi	0.324	0.006	1.89%	1.28	6.94	5.5%	35	4%	34%	0.33	1.03	18.5%	7.7%	0.337	0.175
Ras Al Khaimah for White Cement and Constr	0.065	0.000	0.00%	0.51	19.94	8.4%	33	0%	0%	0.00	0.00	2.6%	2.0%	0.080	0.053
Gulf Cement	0.034	0.000	-0.29%	0.34	(12.55)	12.1%	28	15%	-37%	0.00	0.03	-2.7%	-2.2%	0.063	0.029
Combined Group Contracting	0.158	0.000	0.00%	0.55	7.12	13.0%	26	1%	-36%	0.10	0.66	7.7%	1.2%	0.251	0.138
Sharjah Cement and Industrial Development	0.042	0.000	0.00%	0.21	25.32	12.4%	26	0%	0%	0.00	0.00	0.8%	0.6%	0.064	0.042
KGL Logistics	0.028	0.003	10.76%	0.21	4.52	0.1%	21	10%	-26%	0.40	14.66	4.6%	2.9%	0.043	0.023
Fujairah Cement Industries	0.035	0.000	0.29%	0.14	16.78	12.1%	12	10%	-23%	0.00	0.10	0.8%	0.4%	0.053	0.029
Shuaiba Industrial	0.130	0.000	0.00%	0.72	40.15	7.6%	13	5%	-16%	0.00	0.00	1.8%	1.4%	0.180	0.122
Kuwait and Gulf Link Transport	0.047	0.002	3.76%	0.20	14.18	0.0%	13	4%	-29%	0.02	0.45	1.4%	0.4%	0.080	0.042
National Cleaning	0.054	0.001	1.69%	0.32	7.23	9.4%	11	4%	-22%	0.00	0.07	4.4%	1.5%	0.088	0.047
Mubarrad Holding	0.060	0.002	2.56%	0.48	9.70	7.8%	10	9%	-31%	0.06	0.96	4.9%	4.1%	0.089	0.049
Specialities Group Holding	0.058	-0.002	-2.83%	0.29	6.30	0.0%	8	3%	-19%	0.01	0.18	4.5%	3.5%	0.086	0.055
Hilal Cement	0.094	0.000	0.00%	0.82	(7.72)	16.0%	10	-18%	-6%	0.00	0.00	-10.6%	-6.2%	0.126	0.063
National Ranges	0.016	0.001	6.08%	0.29	(1.15)	0.0%	4	-1%	59%	0.00	0.10	-24.9%	-5.3%	0.018	0.007
Metal and Recycling	0.045	0.004	10.00%	0.38	(1.91)	0.0%	4	-6%	-18%	0.00	0.00	-19.7%	-10.1%	0.070	0.020
Salbookh Trading	0.034	0.004	12.13%	0.46	(2.00)	0.0%	3	25%	-32%	0.02	0.73	-23.2%	-15.9%	0.051	0.026
Equipment Holding	0.017	0.001	3.59%	0.35	(199.77)	0.0%	2	17%	-21%	0.05	2.77	-0.2%	-0.1%	0.024	0.013
<b>Total Industrials - 29 Companies</b>				<b>0.85</b>	<b>12.68</b>	<b>5.2%</b>	<b>2,661</b>			<b>3.64</b>	<b>26.89</b>	<b>6.67%</b>	<b>5.05%</b>		



# DAILY MARKET COVERAGE REPORT

## NIC MENA SECURITIES - RESEARCH AND STUDIES DEP



Insurance	Price			Valuation Multiples			MKT Cap	Price Performance		Trading Indicators		ROE	ROA	52 Week (KD)	
	Company	Close (KD)	Day Δ	Day % Δ	PBV(X)	PE(X)		DY%	Mn KD	MTD(%)	YTD (%)			Value (Mn KD)	(Mn Shrs)
Gulf Insurance Group	0.597	0.032	5.66%	1.02	8.33	6.2%	111	-2%	-9%	0.00	0.00	12.3%	1.7%	0.680	0.550
Al Ahleia Insurance	0.396	-0.004	-1.00%	0.75	7.98	8.5%	82	4%	-3%	0.00	0.00	9.4%	3.3%	0.424	0.367
Kuwait Insurance	0.370	0.000	0.00%	0.61	7.17	6.4%	68	6%	12%	0.00	0.00	8.5%	4.6%	0.387	0.300
Kuwait Reinsurance	0.200	0.000	0.00%	0.76	8.56	2.2%	40	3%	45%	0.00	0.00	8.9%	3.2%	0.200	0.126
Bahrain Kuwait Insurance	0.200	0.000	0.00%	0.93	12.87	6.1%	28	0%	0%	0.00	0.00	7.2%	1.1%	0.200	0.200
Warba Insurance	0.076	-0.002	-1.95%	0.33	10.72	0.0%	13	-4%	25%	0.00	0.00	3.1%	1.0%	0.094	0.051
First Takaful Insurance	0.040	0.000	-0.50%	0.48	5.04	0.0%	4	0%	4%	0.00	0.05	9.6%	5.9%	0.056	0.031
Wethaq Takaful Insurance	0.023	-0.001	-2.92%	0.21	(29.49)	0.0%	3	-2%	-6%	0.01	0.43	-0.7%	-0.7%	0.035	0.018
<b>Total Insurance - 8 Companies</b>				<b>0.74</b>	<b>8.32</b>	<b>6.0%</b>	<b>350</b>			<b>0.01</b>	<b>0.49</b>	<b>8.86%</b>	<b>3.00%</b>		

Oil and Gas	Price			Valuation Multipels			MKT Cap	Price Performance		Trading Indicators		ROE	ROA	52 Week (KD)	
	Company	Close (KD)	Day Δ	Day % Δ	PBV(X)	PE(X)		DY%	Mn KD	MTD(%)	YTD (%)			Value (Mn KD)	(Mn Shrs)
Burgan for Well Drilling Trading and Maintenanc	0.083	0.007	9.21%	0.30	8.43	0.0%	19	19%	2%	0.00	0.00	3.6%	1.1%	0.098	0.060
Energy House Holding	0.022	0.000	0.00%	0.68	(3.00)	0.0%	16	10%	-4%	0.00	0.00	-22.5%	-17.0%	0.036	0.014
Gulf Petroleum Investment	0.022	0.001	2.86%	0.24	(6.96)	0.0%	10	12%	7%	0.74	34.24	-3.4%	-2.3%	0.025	0.012
Independent Petroleum Group	0.430	0.000	0.00%	0.79	11.72	7.0%	78	-4%	-11%	0.00	0.00	6.8%	2.2%	0.497	0.375
National Petroleum Services	1.000	0.020	2.04%	2.38	8.53	7.0%	97	0%	-15%	0.00	0.00	27.9%	23.6%	1.389	0.903
Senergy Holding	0.017	0.000	1.81%	0.34	(0.71)	0.0%	3	4%	-23%	0.01	0.67	-47.9%	-30.4%	0.027	0.014
<b>Total Oil and Gas - 6 Companies</b>				<b>0.80</b>	<b>25.94</b>	<b>5.5%</b>	<b>223</b>			<b>0.75</b>	<b>34.92</b>	<b>3.10%</b>	<b>2.18%</b>		

Real estate	Price			Valuation Multiples			MKT Cap	Price Performance		Trading Indicators		ROE	ROA	52 Week (KD)	
	Company	Close (KD)	Day Δ	Day % Δ	PBV(X)	PE(X)		DY%	Mn KD	MTD(%)	YTD (%)			Value (Mn KD)	(Mn Shrs)
Mabane Co.	0.635	0.002	0.32%	1.48	12.44	1.6%	702	0%	-25%	0.39	0.62	11.9%	5.8%	0.877	0.434
Salhia Real Estate	0.397	-0.003	-0.75%	1.20	9.12	5.0%	196	0%	-5%	0.03	0.08	13.2%	5.8%	0.460	0.324
Commercial Real Estate	0.097	0.001	1.04%	0.59	12.01	5.9%	175	4%	6%	0.16	1.65	5.0%	2.7%	0.103	0.083
Tamdeen Real Estate	0.241	-0.010	-3.98%	0.35	11.76	4.2%	97	-2%	-23%	0.00	0.02	3.0%	2.2%	0.343	0.248
National Real Estate	0.071	0.000	0.42%	0.38	8.95	0.0%	102	2%	-17%	0.07	1.05	4.2%	2.4%	0.090	0.058
Kuwait Real Estate	0.099	0.002	2.07%	0.69	12.52	0.4%	88	5%	-6%	0.15	1.52	5.5%	2.2%	0.115	0.070
United Real Estate	0.052	0.001	1.96%	0.30	(7.74)	0.0%	56	4%	-15%	0.00	0.01	-3.9%	-1.2%	0.063	0.045
First Dubai for Real Estate Development	0.040	0.001	3.09%	0.54	43.87	1.0%	40	5%	12%	0.07	1.88	1.2%	1.0%	0.055	0.027

# DAILY MARKET COVERAGE REPORT

NIC MENA SECURITIES - RESEARCH AND STUDIES DEP



Real estate Company	Price			Valuation Multiples			MKT Cap	Price Performance		Trading Indicators		ROE	ROA	52 Week (KD)	
	Close (KD)	Day Δ	Day % Δ	PBV(X)	PE(X)	DY%	Mn KD	MTD(%)	YTD (%)	Value (Mn KD)	(Mn Shrs)	(%)	(%)	High	Low
Al Mazaya Holding	0.053	0.000	0.38%	0.42	(3.82)	0.1%	34	5%	-10%	0.02	0.30	-11.0%	-3.8%	0.067	0.047
Dar Al Thuraya Real Estate	0.127	-0.001	-0.78%	1.21	33.48	0.0%	19	-5%	74%	0.00	0.00	3.6%	3.6%	0.190	0.040
Injazzat Real Estate Development	0.078	-0.001	-0.64%	0.50	(3.74)	8.9%	26	5%	-2%	0.00	0.05	-13.4%	-7.0%	0.091	0.061
Ajial Real Estate Entertainment	0.135	0.002	1.50%	0.21	13.05	0.0%	26	2%	-22%	0.00	0.01	1.6%	1.4%	0.213	0.115
Arkan Al Kuwait Real Estate	0.082	0.001	1.23%	0.58	8.88	9.5%	21	-2%	-8%	0.00	0.01	6.6%	3.5%	0.100	0.076
Al Argan International Real Estate	0.083	0.000	0.00%	0.24	26.93	5.9%	21	-5%	-21%	0.00	0.00	0.9%	0.3%	0.141	0.060
Al-Enmaa Real Estate	0.045	-0.001	-1.96%	0.45	11.89	0.0%	20	3%	-28%	0.04	0.97	3.8%	2.4%	0.079	0.037
Aayan Real Estate	0.059	0.004	6.50%	0.35	11.55	8.1%	24	15%	-20%	0.07	1.17	3.0%	1.9%	0.080	0.048
Dalqan Real Estate	0.350	0.000	0.00%	2.91	59.01	0.0%	19	0%	0%	0.00	0.00	4.9%	4.9%	0.350	0.350
Kuwait Business Town Real Estate	0.027	0.002	8.16%	0.24	6.77	0.3%	17	11%	-40%	0.25	9.83	3.6%	2.7%	0.046	0.022
Tijara and Realestate Investment	0.040	0.000	0.00%	0.37	10.50	4.9%	15	-5%	-20%	0.00	0.00	3.6%	1.9%	0.055	0.034
Munshaat Real Estate Projects	0.064	0.003	4.10%	0.43	23.40	3.3%	20	27%	-14%	0.01	0.22	1.8%	0.7%	0.085	0.045
Aqar Real Estate Investments	0.058	-0.002	-3.17%	0.42	4.85	8.5%	12	-11%	-27%	0.00	0.00	8.7%	7.3%	0.089	0.060
Sokouk Holding	0.027	-0.001	-1.83%	0.33	(4.48)	0.0%	15	14%	-25%	0.09	3.23	-7.4%	-4.7%	0.040	0.022
Al-Arabiya Real Estate	0.025	0.001	2.04%	0.22	7.58	2.5%	13	9%	-15%	0.03	1.26	2.9%	1.1%	0.033	0.020
Mashaer Holding	0.057	0.002	4.01%	0.44	6.13	0.0%	10	5%	-27%	0.01	0.10	7.1%	5.0%	0.086	0.048
Osos Holding Group	0.095	0.000	0.00%	0.75	7.16	10.0%	10	0%	-5%	0.00	0.00	10.5%	7.0%	0.118	0.084
Abyaar Real Estate Development	0.007	0.000	1.41%	0.21	(0.51)	0.0%	8	-1%	-8%	0.17	23.62	-40.9%	-12.4%	0.014	0.005
Ream Real Estate	0.204	0.000	0.00%	1.56	(8.21)	1.1%	22	0%	132%	0.00	0.00	-19.0%	-10.1%	0.204	0.060
Investors Holding Group	0.017	0.001	3.13%	0.83	(0.78)	0.0%	10	23%	106%	0.07	4.10	-106.5%	-57.2%	0.017	0.007
Al Massaleh Real Estate	0.035	0.003	9.03%	0.39	(4.88)	0.0%	8	20%	-5%	0.00	0.01	-8.1%	-1.9%	0.040	0.026
Kuwait Real Estate Holding	0.025	0.002	8.33%	0.04	0.66	7.2%	5	-11%	-21%	0.00	0.00	5.5%	2.2%	0.034	0.023
Kuwait Remal Real Estate	0.018	0.000	0.00%	0.26	(2.40)	0.0%	5	21%	-28%	0.00	0.21	-11.0%	-3.9%	0.028	0.013
Real Estate Trade Centers	0.028	0.002	5.77%	0.15	157.12	0.0%	4	1%	10%	0.00	0.10	0.1%	0.1%	0.050	0.018
Taameer Real Estate Investment	0.021	0.001	2.48%	0.31	(4.38)	0.0%	5	9%	-23%	0.43	20.75	-7.0%	-4.5%	0.034	0.013
Al Masaken International Real Estate Developr	0.031	0.000	0.00%	0.35	37.93	0.5%	3	0%	-29%	0.00	0.00	0.9%	0.4%	0.074	0.027
Mena Real Estate	0.028	0.001	2.59%	0.19	(61.74)	0.0%	4	16%	-31%	0.15	5.22	-0.3%	-0.2%	0.043	0.021
Sanam Real Estate	0.030	0.000	0.00%	0.38	40.63	0.0%	4	0%	-25%	0.00	0.00	0.9%	0.9%	0.043	0.027
Ajwan Gulf Real Estate	0.011	0.000	0.00%	0.19	(7.68)	0.0%	2	0%	-29%	0.00	0.00	-2.5%	-2.2%	0.016	0.009
Effect Real Estate	0.021	0.000	0.00%	0.29	(8.85)	4.9%	2	0%	0%	0.00	0.00	-3.3%	-3.2%	0.021	0.021
Al Mudon International Real Estate	0.016	0.000	0.00%	0.12	(8.22)	0.0%	2	0%	-35%	0.00	0.00	-1.5%	-1.4%	0.029	0.015
<b>Total Real estate - 39 Companies</b>				<b>0.61</b>	<b>21.80</b>	<b>2.6%</b>	<b>1,862</b>			<b>2.23</b>	<b>77.99</b>	<b>2.79%</b>	<b>2.96%</b>		

# DAILY MARKET COVERAGE REPORT

NIC MENA SECURITIES - RESEARCH AND STUDIES DEP



Technology	Price			Valuation Multiples			MKT Cap	Price Performance		Trading Indicators		ROE	ROA	52 Week (KD)	
	Company	Close (KD)	Day Δ	Day % Δ	PBV(X)	PE(X)		DY%	Mn KD	MTD(%)	YTD (%)			Value (Mn KD)	(Mn Shrs)
Automated Systems	0.070	0.003	4.96%	0.55	(67.70)	5.7%	7	2%	-1%	0.00	0.07	-0.8%	-0.7%	0.086	0.051
<b>Total Technology - 1 Companies</b>				<b>0.55</b>	<b>(67.70)</b>	<b>5.7%</b>	<b>7</b>			<b>0.00</b>	<b>0.07</b>	<b>-0.81%</b>	<b>-0.73%</b>		

Telecom	Price			Valuation Multiples			MKT Cap	Price Performance		Trading Indicators		ROE	ROA	52 Week (KD)	
	Company	Close (KD)	Day Δ	Day % Δ	PBV(X)	PE(X)		DY%	Mn KD	MTD(%)	YTD (%)			Value (Mn KD)	(Mn Shrs)
Mobile Telecommunications	0.573	0.001	0.17%	1.91	11.43	5.4%	2,479	-3%	-4%	1.07	1.87	16.7%	4.6%	0.604	0.407
Kuwait Telecommunications	0.860	0.001	0.12%	1.99	9.85	4.1%	429	2%	9%	0.02	0.02	20.2%	11.1%	0.870	0.680
National Mobile Telecommunications	0.585	0.004	0.69%	0.51	9.73	11.0%	293	1%	-29%	0.19	0.32	5.3%	2.4%	0.835	0.550
AAN Digital Services	0.012	0.000	-0.85%	0.34	37.83	0.0%	10	12%	-14%	0.16	13.95	0.9%	0.7%	0.021	0.009
Hayat Communications	0.067	-0.004	-4.97%	0.57	28.34	0.0%	6	-18%	-11%	0.00	0.01	2.0%	0.8%	0.098	0.030
<b>Telecom - 5 Companies</b>				<b>1.51</b>	<b>11.05</b>	<b>5.7%</b>	<b>3,218</b>			<b>1.44</b>	<b>16.17</b>	<b>13.70%</b>	<b>7.86%</b>		

Utilities	Price			Valuation Multiples			MKT Cap	Price Performance		Trading Indicators		ROE	ROA	52 Week (KD)	
	Company	Close (KD)	Day Δ	Day % Δ	PBV(X)	PE(X)		DY%	Mn KD	MTD(%)	YTD (%)			Value (Mn KD)	(Mn Shrs)
Shamal Az-Zour Al-Oula Power & Water	0.325	0.001	0.31%	4.67	29.06	0.0%	358	2%	0%	1.46	4.49	16.1%	2.3%	0.500	0.297
<b>Total Utilities - 1 Companies</b>				<b>4.67</b>	<b>29.06</b>	<b>0.0%</b>	<b>358</b>			<b>1.46</b>	<b>4.49</b>	<b>16.06%</b>	<b>2.26%</b>		

<b>Total Market 173 Companies</b>				<b>1.18</b>	<b>14.82</b>	<b>3.99%</b>	<b>30,549</b>			<b>30.87</b>	<b>346.68</b>	<b>7.97%</b>	<b>2.77%</b>		
-----------------------------------	--	--	--	-------------	--------------	--------------	---------------	--	--	--------------	---------------	--------------	--------------	--	--

## End of Report

The information contained in this document is proprietary to NIC and is for use only by the persons to whom it is issued. This document is confidential and may not be distributed either in part or in whole without the express agreement of NIC. It is intended solely for the use of the individual or entity to whom it is addressed and others authorized to receive it.



شركة الاستثمار الوطنية  
NATIONAL INVESTMENTS COMPANY

Sharq, Al Mutanabi Street, Khaleejia Tower | P.O. Box 25667, Safat 13117, Kuwait

T.: +965 2226 6666 | Fax: +965 2226 6793 | [www.nic.com.kw](http://www.nic.com.kw)