

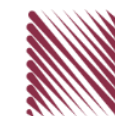
شركة الاستثمارات الوطنية
NATIONAL INVESTMENTS COMPANY

Bursa Kuwait – Daily Market Report
MENA Securities – Research & Studies Dep.

Tuesday, October 6, 2020

DAILY MARKET COVERAGE REPORT

NIC MENA SECURITIES - RESEARCH AND STUDIES DEP



Index	Close	DTD Chg Net	DTD (%)	YTD (%)	52W High	52W Low	MKT CAP Bn (KD)	PBV (X)	PE (X)	DY (%)
All Share Index	5,645.54	47.97	0.86%	-10.3%	6,416.43	4,339.58	32.72	1.31	15.80	3.72%
Premier Index	6,272.01	59.68	0.96%	-10.3%	7,172.32	4,498.65	24.50	1.77	14.72	3.41%
Main Index	4,399.91	24.03	0.55%	-10.4%	4,932.47	3,965.63	8.22	0.73	20.21	4.64%
NIC 50 Index	6,929.51	53.17	0.77%	-7.1%	7,517.86	5,014.61	27.67	1.49	15.03	3.65%

Index	Value Mn(KD)	Volume (Mn share)
All Share Index	63.81	393.04
Premier Index	50.06	131.58
Main Index	13.75	261.46
NIC 50 Index	58.16	290.76

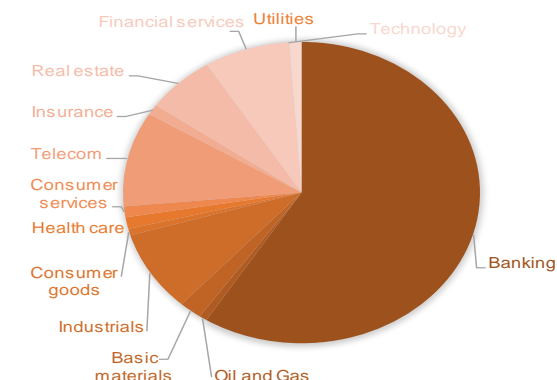
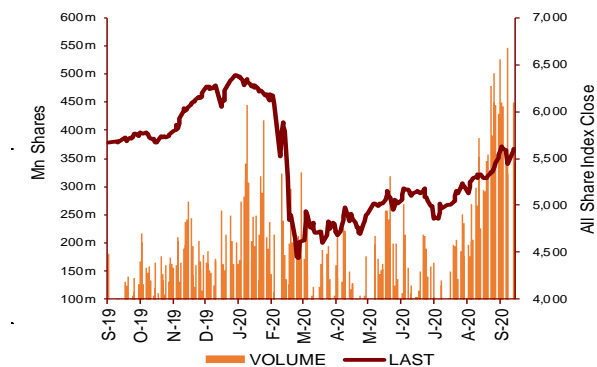
Market Breadth	UP ↑	Down ↓	No Chg ↔
All Share Index	81	34	58
Premier Index	17	3	0
Main Index	64	31	58
NIC 50 Index	32	11	7

Today's Top 5 Gainer %	Close KD	Value KD	DTD (%)
Energy House Holding	0.027	145,590	24.65%
Palms Agro Production	0.079	1,187	20.92%
Tijara and Realestate Investme	0.049	64,770	19.75%
Amwal International Investment	0.036	4	9.91%
Real Estate Trade Centers	0.029	0	7.75%

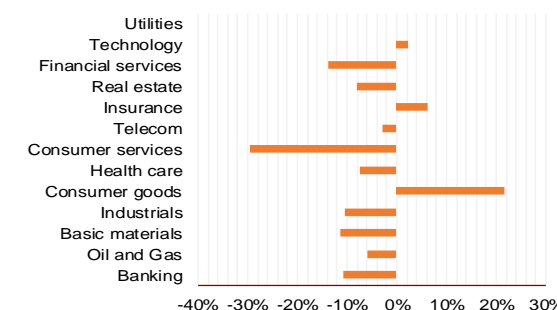
Today's Top 5 Loser %	Close KD	Value KD	DTD (%)
Future Kid Entertainment a	0.072	1	-9.75%
Gulf Franchising Holding	0.045	831	-5.22%
Mashaer Holding	0.059	15,350	-2.97%
Kuwait Financial Centre	0.086	62,759	-2.39%
Gulf Insurance Group	0.635	5,918	-2.31%

Today's Top 5 by Value	Close KD	Trade Val Mn(KD)	DTD (%)
Kuwait Finance House	0.693	12.46	0.73%
National Bank of Kuwait	0.894	6.51	0.11%
Kuwait International Bank	0.204	4.49	4.62%
Ahli United Bank BSC	0.247	4.42	1.23%
Mobile Telecommunications	0.597	4.29	1.53%

Top 5 by Volume	Close KD	Trade Vol Mn(Shrs)	DTD (%)
Arzan Financial Group for f	0.062	46.07	2.48%
Kuwait International Bank	0.204	22.32	4.62%
First Investment	0.036	21.65	1.42%
AAN Digital Services	0.013	20.88	-0.75%
Al-Arabiya Real Estate	0.029	20.31	2.45%



YTD Sector Performance %



Sector	Close	DTD Chg Net	DTD (%)	YTD (%)	52W High	52W Low	MKT CAP Bn (KD)	PBV (X)	PE (X)	DY (%)
Banking	1,323.63	11.750	0.90%	-10.9%	1,536.8	986.4	19.29	1.75	16.07	3.3%
Oil and Gas	1,165.02	21.220	1.86%	-5.9%	1,372.2	985.7	0.23	0.85	27.27	5.2%
Basic materials	805.43	15.410	1.95%	-11.4%	991.8	561.7	0.68	0.97	14.81	7.5%
Industrials	833.00	6.620	0.80%	-10.3%	937.5	602.9	2.84	0.90	13.55	4.9%
Consumer goods	774.03	3.120	0.40%	21.6%	810.7	548.6	0.23	1.53	93.81	2.2%
Health care	820.13	0.000	0.00%	-7.3%	921.9	815.0	0.41	4.14	48.09	1.0%
Consumer services	754.43	2.900	0.39%	-29.6%	1,083.1	674.8	0.38	0.86	36.23	4.6%
Telecom	1,085.99	13.340	1.24%	-2.9%	1,116.7	802.2	3.33	1.57	11.43	5.5%
Insurance	1,013.37	-7.440	-0.73%	6.2%	1,068.3	901.0	0.36	0.76	8.61	5.8%
Real estate	978.21	7.670	0.79%	-7.9%	1,083.4	763.2	2.06	0.67	24.09	2.4%
Financial services	931.56	4.470	0.48%	-13.8%	1,097.0	801.4	2.54	0.73	16.46	4.1%
Technology	527.44	21.100	4.17%	2.4%	632.9	371.0	0.01	0.57	-70.32	5.5%
Utilities	863.16	-5.260	-0.61%	0.0%	1,042.1	781.6	0.36	4.71	29.33	0.0%
	5,645.54	47.97	0.86%	-10.3%	6,416.4	4,339.6	32.72	1.31	15.80	3.72%

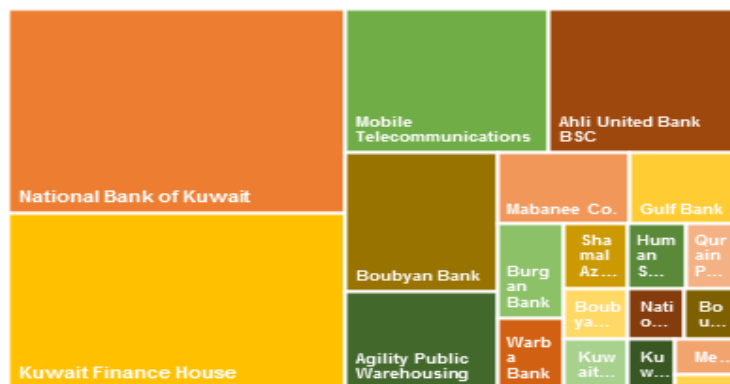
DAILY MARKET COVERAGE REPORT

NIC MENA SECURITIES - RESEARCH AND STUDIES DEP

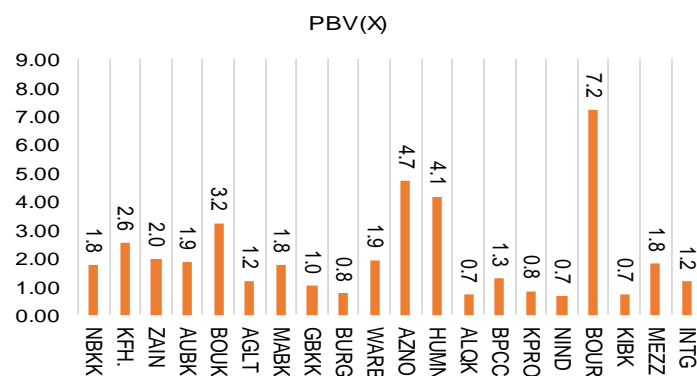


Premier Market	Price			Valuation Multiples			MKT Cap	Price Performance		Trading Indicators		ROE	ROA	52 Week (KD)	
	Close (KD)	Day Δ	Day % Δ	PBV(X)	PE(X)	DY%	Mn KD	MTD(%)	YTD (%)	Value (Mn KD)	(Mn Shrs)	(%)	(%)	High	Low
National Bank of Kuwait	0.894	0.001	0.11%	1.77	15.13	3.5%	6,071	3%	-12%	6.51	7.29	11.7%	1.4%	1.062	0.654
Kuwait Finance House	0.693	0.005	0.73%	2.55	20.95	2.4%	5,259	5%	-6%	12.46	18.03	12.2%	1.3%	0.761	0.473
Mobile Telecommunications	0.597	0.009	1.53%	1.99	11.91	5.2%	2,583	4%	-1%	4.29	7.22	16.7%	4.6%	0.604	0.407
Ahli United Bank BSC	0.247	0.003	1.23%	1.86	10.88	4.9%	2,384	5%	-16%	4.42	17.99	17.1%	1.8%	0.311	0.160
Boubyan Bank	0.614	0.006	0.99%	3.23	29.68	1.0%	1,859	3%	0%	1.23	2.00	10.9%	1.2%	0.638	0.380
Agility Public Warehousing	0.687	0.007	1.03%	1.19	15.15	2.6%	1,315	4%	-4%	1.39	2.03	7.9%	4.2%	0.748	0.357
Mabane Co.	0.758	0.005	0.66%	1.77	14.85	1.4%	838	3%	-12%	0.42	0.55	11.9%	5.8%	0.877	0.434
Gulf Bank	0.233	0.007	3.10%	1.02	10.63	4.3%	677	6%	-23%	3.84	16.65	9.6%	1.0%	0.317	0.180
Burgan Bank	0.216	0.007	3.35%	0.75	6.68	5.3%	566	6%	-29%	1.41	6.58	11.3%	1.2%	0.324	0.175
Warba Bank	0.268	0.011	4.28%	1.94	25.52	0.0%	422	7%	2%	3.47	13.13	7.6%	0.5%	0.279	0.164
Shamal Az-Zour Al-Oula Power & Water	0.328	-0.002	-0.61%	4.71	29.33	0.0%	361	3%	0%	1.41	4.30	16.1%	2.3%	0.500	0.297
Human Soft Holding	2.730	0.020	0.74%	4.13	9.26	6.7%	332	5%	-9%	1.19	0.44	44.6%	30.3%	3.470	1.944
Qurain Petrochemical Industries	0.289	0.010	3.58%	0.70	10.46	5.3%	295	5%	-7%	1.06	3.68	6.7%	3.6%	0.323	0.163
Boubyan Petrochemical	0.566	0.004	0.71%	1.28	24.15	9.1%	285	3%	-15%	0.16	0.28	5.3%	2.1%	0.800	0.395
Kuwait Projects Company Holding	0.157	0.002	1.29%	0.84	9.48	5.9%	285	5%	-27%	0.51	3.27	8.9%	0.3%	0.225	0.147
National Industries Group Holding	0.178	0.003	1.71%	0.67	5.48	6.1%	254	7%	-26%	0.69	3.88	12.3%	3.7%	0.247	0.121
Boursa Kuwait Securities Co	1.156	-0.009	-0.77%	7.23	24.20	0.0%	232	1%	0%	0.47	0.41	29.9%	26.5%	1.210	0.990
Kuwait International Bank	0.204	0.009	4.62%	0.74	12.13	4.9%	208	10%	-22%	4.49	22.32	6.1%	0.6%	0.270	0.162
Mezzan Holding	0.629	0.001	0.16%	1.81	33.99	2.7%	192	1%	26%	0.20	0.33	5.3%	2.2%	0.665	0.428
Integrated Holding	0.362	-0.003	-0.82%	1.16	10.08	11.0%	80	1%	-34%	0.43	1.19	11.5%	8.5%	0.600	0.342
Total		59.68	0.96%	1.77	14.72	3.41%	24.50	4.0%	-10.3%	50.06	131.58	12.01%	1.56%		

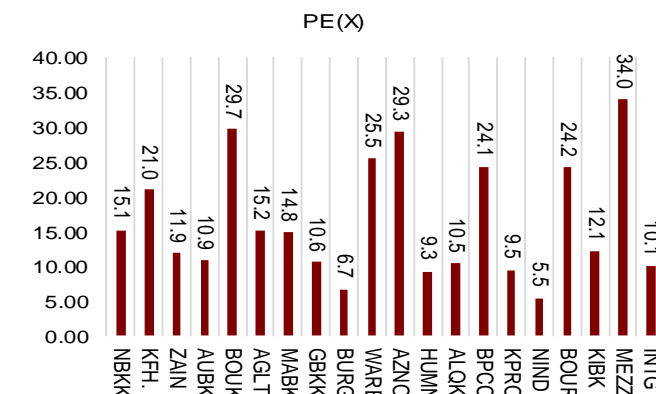
Market Capitalization



Price to Book Value

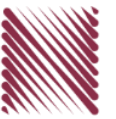


Price to Earning Value

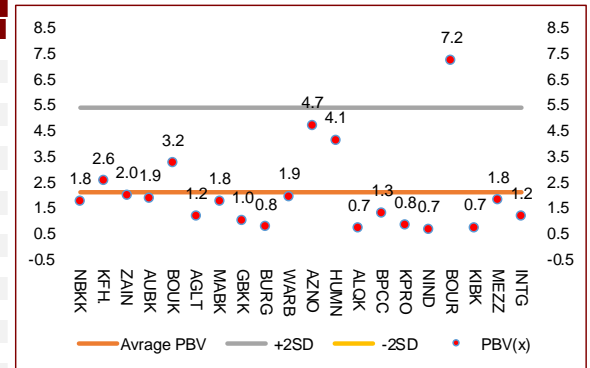


DAILY MARKET COVERAGE REPORT

NIC MENA SECURITIES - RESEARCH AND STUDIES DEP



Premier Market	Price			Valuation Multiples			MKT Cap	Price Performance		ROE	ROA
Company	Close (KD)	Day Δ	Day % Δ	PBV(X)	PE(X)	DY%	Mn KD	MTD(%)	YTD (%)	(%)	(%)
National Bank of Kuwait	0.894	0.001	0.11%	1.77	15.1	3.5%	6,071	2.8%	-12.3%	11.7%	1.4%
Kuwait Finance House	0.693	0.005	0.73%	2.55	21.0	2.4%	5,259	4.5%	-6.3%	12.2%	1.3%
Mobile Telecommunications	0.597	0.009	1.53%	1.99	11.9	5.2%	2,583	3.8%	-0.7%	16.7%	4.6%
Ahli United Bank BSC	0.247	0.003	1.23%	1.86	10.9	4.9%	2,384	5.1%	-16.2%	17.1%	1.8%
Boubyan Bank	0.614	0.006	0.99%	3.23	29.7	1.0%	1,859	2.9%	0.2%	10.9%	1.2%
Agility Public Warehousing	0.687	0.007	1.03%	1.19	15.2	2.6%	1,315	4.3%	-3.7%	7.9%	4.2%
Mabane Co.	0.758	0.005	0.66%	1.77	14.8	1.4%	838	3.3%	-11.7%	11.9%	5.8%
Gulf Bank	0.233	0.007	3.10%	1.02	10.6	4.3%	677	5.9%	-23.1%	9.6%	1.0%
Burgan Bank	0.216	0.007	3.35%	0.75	6.7	5.3%	566	6.4%	-29.3%	11.3%	1.2%
Warba Bank	0.268	0.011	4.28%	1.94	25.5	0.0%	422	7.2%	1.9%	7.6%	0.5%
Shamal Az-Zour Al-Oula Power & Water	0.328	-0.002	-0.61%	4.71	29.3	0.0%	361	2.5%	0.0%	16.1%	2.3%
Human Soft Holding	2.730	0.020	0.74%	4.13	9.3	6.7%	332	5.0%	-9.4%	44.6%	30.3%
Qurain Petrochemical Industries	0.289	0.010	3.58%	0.70	10.5	5.3%	295	5.5%	-6.8%	6.7%	3.6%
Boubyan Petrochemical	0.566	0.004	0.71%	1.28	24.1	9.1%	285	2.7%	-15.4%	5.3%	2.1%
Kuwait Projects Company Holding	0.157	0.002	1.29%	0.84	9.5	5.9%	285	4.6%	-26.9%	8.9%	0.3%
National Industries Group Holding	0.178	0.003	1.71%	0.67	5.5	6.1%	254	7.2%	-26.1%	12.3%	3.7%
Boursa Kuwait Securities Co	1.156	-0.009	-0.77%	7.23	24.2	0.0%	232	1.4%	0.0%	29.9%	26.5%
Kuwait International Bank	0.204	0.009	4.62%	0.74	12.1	4.9%	208	9.7%	-21.8%	6.1%	0.6%
Mezzan Holding	0.629	0.001	0.16%	1.81	34.0	2.7%	192	1.1%	26.0%	5.3%	2.2%
Integrated Holding	0.362	-0.003	-0.82%	1.16	10.1	11.0%	80	0.8%	-34.3%	11.5%	8.5%
Total		59.68	0.96%	1.77	14.72	3.41%	24.50	4.0%	-10.3%	12.01%	1.56%



Premier Market	Price			Moving Average		RSI	MKT Cap	Price Performance		52 Week (KD)	
Description	Close (KD)	Day Δ	Day % Δ	50 Day	200 Day	14 Day	Mn KD	MTD(%)	YTD (%)	High	Low
Premier Index	6,272	59.68	0.96%	5,778	5,875	72	24	4.0%	-10.3%	7,172	4,499

Top 5 Performrs (Today's Price Change)

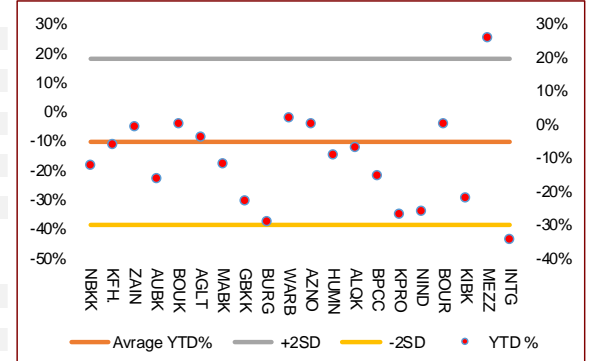
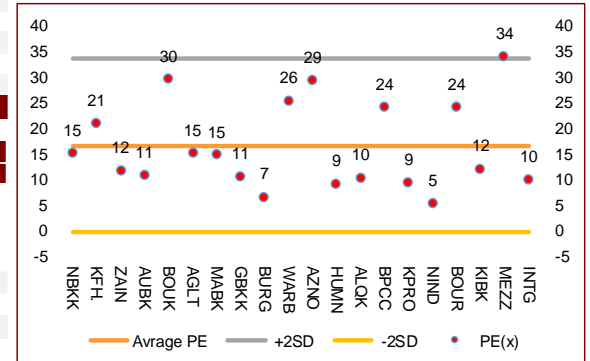
Kuwait International Bank	0.204	0.009	4.62%	0.176	0.204	69	208	9.7%	-21.8%	0.270	0.162
Warba Bank	0.268	0.011	4.28%	0.214	0.220	74	422	7.2%	1.9%	0.279	0.164
Qurain Petrochemical Industries	0.289	0.010	3.58%	0.281	0.266	61	295	5.5%	-6.8%	0.323	0.163
Burgan Bank	0.216	0.007	3.35%	0.196	0.229	64	566	6.4%	-29.3%	0.324	0.175
Gulf Bank	0.233	0.007	3.10%	0.211	0.237	65	677	5.9%	-23.1%	0.317	0.180

Middle Performrs (Today's Price Change)

National Industries Group Holding	0.178	0.003	1.71%	0.163	0.184	59	254	7.2%	-26.1%	0.247	0.121
Mobile Telecommunications	0.597	0.009	1.53%	0.571	0.548	61	2,583	3.8%	-0.7%	0.604	0.407
Kuwait Projects Company Holding	0.157	0.002	1.29%	0.152	0.177	61	285	4.6%	-26.9%	0.225	0.147
Ahli United Bank BSC	0.247	0.003	1.23%	0.218	0.227	74	2,384	5.1%	-16.2%	0.311	0.160
Agility Public Warehousing	0.687	0.007	1.03%	0.639	0.613	74	1,315	4.3%	-3.7%	0.748	0.357
Boubyan Bank	0.614	0.006	0.99%	0.568	0.544	72	1,859	2.9%	0.2%	0.638	0.380
Human Soft Holding	2.730	0.020	0.74%	2.653	2.792	44	332	5.0%	-9.4%	3.470	1.944
Kuwait Finance House	0.693	0.005	0.73%	0.624	0.639	74	5,259	4.5%	-6.3%	0.761	0.473
Boubyan Petrochemical	0.566	0.004	0.71%	0.553	0.573	67	285	2.7%	-15.4%	0.800	0.395
Mabane Co.	0.758	0.005	0.66%	0.100	0.100	82	838	3.3%	-11.7%	1.210	0.996

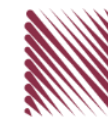
Bottom 5 Performrs (Today's Price Change)

Integrated Holding	0.362	-0.003	-0.82%	0.373	0.447	34	80	0.8%	-34.3%	0.600	0.342
Boursa Kuwait Securities Co	1.156	-0.009	-0.77%	0.312	0.078	70	232	1.4%	0.0%	1.210	0.990
Shamal Az-Zour Al-Oula Power & Water	0.328	-0.002	-0.61%	0.225	0.056	55	361	2.5%	0.0%	0.500	0.297
National Bank of Kuwait	0.894	0.001	0.11%	0.839	0.848	64	6,071	2.8%	-12.3%	1.062	0.654
Mezzan Holding	0.629	0.001	0.16%	0.620	0.557	57	192	1.1%	26.0%	0.665	0.428



DAILY MARKET COVERAGE REPORT

NIC MENA SECURITIES - RESEARCH AND STUDIES DEP



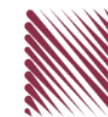
Banking Sector	Price			Valuation Multiples			MKT Cap	Price Performance		Trading Indicators		ROE	ROA	52 Week (KD)	
	Company	Close (KD)	Day Δ	Day % Δ	PBV(X)	PE(X)		DY%	Mn KD	MTD(%)	YTD (%)			Value (Mn KD)	(Mn Shrs)
National Bank of Kuwait	0.894	0.001	0.11%	1.77	15.13	3.5%	6,071	3%	-12%	6.51	7.29	11.7%	1.4%	1.062	0.654
Kuwait Finance House	0.693	0.005	0.73%	2.55	20.95	2.4%	5,259	5%	-6%	12.46	18.03	12.2%	1.3%	0.761	0.473
Ahli United Bank BSC	0.247	0.003	1.23%	1.86	10.88	4.9%	2,384	5%	-16%	4.42	17.99	17.1%	1.8%	0.311	0.160
Boubyan Bank	0.614	0.006	0.99%	3.23	29.68	1.0%	1,859	3%	0%	1.23	2.00	10.9%	1.2%	0.638	0.380
Commercial Bank of Kuwait	0.500	0.000	0.00%	1.32	0.00	3.7%	965	0%	-5%	0.00	0.00	0.0%	0.0%	0.555	0.465
Gulf Bank	0.233	0.007	3.10%	1.02	10.63	4.3%	677	6%	-23%	3.84	16.65	9.6%	1.0%	0.317	0.180
Burgan Bank	0.216	0.007	3.35%	0.75	6.68	5.3%	566	6%	-29%	1.41	6.58	11.3%	1.2%	0.324	0.175
Ahli United Bank	0.284	0.004	1.43%	1.22	10.07	4.8%	554	5%	-13%	0.32	1.13	12.1%	1.3%	0.330	0.225
Warba Bank	0.268	0.011	4.28%	1.94	25.52	0.0%	422	7%	2%	3.47	13.13	7.6%	0.5%	0.279	0.164
Al Ahli Bank of Kuwait	0.200	0.004	2.04%	0.57	11.20	7.0%	321	8%	-22%	0.83	4.15	5.1%	0.6%	0.303	0.156
Kuwait International Bank	0.204	0.009	4.62%	0.74	12.13	4.9%	208	10%	-22%	4.49	22.32	6.1%	0.6%	0.270	0.162
Total Banking Sector - 11 Companies				1.75	16.07	3.3%	19,287			38.98	109.28	10.90%	1.21%		

Basic materials	Price			Valuation Multiples			MKT Cap	Price Performance		Trading Indicators		ROE	ROA	52 Week (KD)	
	Company	Close (KD)	Day Δ	Day % Δ	PBV(X)	PE(X)		DY%	Mn KD	MTD(%)	YTD (%)			Value (Mn KD)	(Mn Shrs)
Qurain Petrochemical Industries	0.289	0.010	3.58%	0.70	10.46	5.3%	295	5%	-7%	1.06	3.68	6.7%	3.6%	0.323	0.163
Boubyan Petrochemical	0.566	0.004	0.71%	1.28	24.15	9.1%	285	3%	-15%	0.16	0.28	5.3%	2.1%	0.800	0.395
Al Kout Industrial Projects	0.769	0.000	0.00%	2.50	16.21	6.5%	78	0%	-10%	0.00	0.00	15.4%	11.3%	0.850	0.769
Kuwait Foundry	0.262	0.010	3.97%	0.88	21.17	20.3%	19	2%	-22%	0.01	0.03	4.1%	3.8%	0.490	0.192
Total Basic materials - 4 Companies				0.97	14.81	7.5%	677			1.22	3.99	6.57%	5.07%		

Consumer goods	Price			Valuation Multiples			MKT Cap	Price Performance		Trading Indicators		ROE	ROA	52 Week (KD)	
	Company	Close (KD)	Day Δ	Day % Δ	PBV(X)	PE(X)		DY%	Mn KD	MTD(%)	YTD (%)			Value (Mn KD)	(Mn Shrs)
Mezzan Holding	0.629	0.001	0.16%	1.81	33.99	2.7%	192	1%	26%	0.20	0.33	5.3%	2.2%	0.665	0.428
Livestock Transport and Trading	0.185	0.003	1.65%	0.96	32.97	0.1%	39	1%	6%	0.01	0.03	2.9%	2.0%	0.200	0.152
Danah Al Safat Foodstuff	0.012	0.000	0.00%	0.25	(0.30)	0.1%	1	0%	-25%	0.00	0.00	-84.8%	-43.2%	0.029	0.010
Total Basic materials - 3 Companies				1.53	93.81	2.2%	232			0.21	0.35	1.64%	0.90%		

DAILY MARKET COVERAGE REPORT

NIC MENA SECURITIES - RESEARCH AND STUDIES DEP



Consumer services	Price			Valuation Multiples			MKT Cap	Price Performance		Trading Indicators		ROE	ROA	52 Week (KD)	
Company	Close (KD)	Day Δ	Day % Δ	PBV(X)	PE(X)	DY%	Mn KD	MTD(%)	YTD (%)	Value (Mn KD)	(Mn Shrs)	(%)	(%)	High	Low
Jazeera Airways	0.590	-0.003	-0.51%	2.93	7.90	5.9%	118	0%	-46%	0.21	0.35	37.1%	9.0%	1.110	0.372
Kuwait National Cinema	0.724	0.000	0.00%	0.83	7.83	6.7%	67	3%	-31%	0.00	0.00	10.6%	7.2%	1.050	0.600
Oula Fuel Marketing	0.113	0.003	2.73%	0.68	11.83	5.2%	46	2%	-11%	0.00	0.04	5.7%	3.2%	0.134	0.095
Al Soor Fuel Marketing	0.111	0.001	0.91%	0.68	12.99	4.5%	45	1%	-11%	0.00	0.02	5.3%	3.7%	0.129	0.096
Sultan Center Food Products	0.054	0.000	0.00%	0.67	13.59	0.0%	30	2%	4%	0.01	0.10	4.9%	0.7%	0.060	0.036
Jiyad Holding	0.046	0.000	0.00%	0.41	9.18	0.0%	16	16%	19%	0.03	0.60	4.5%	2.8%	0.047	0.029
IFA Hotels and Resorts	0.024	0.000	0.43%	0.85	(0.65)	0.0%	15	2%	-57%	0.03	1.07	-131.5%	-8.1%	0.062	0.021
Kuwait Resorts	0.056	0.003	6.06%	0.38	10.17	0.0%	11	8%	-3%	0.17	3.14	3.8%	3.2%	0.060	0.038
Alrai Media Group	0.037	0.000	0.00%	0.83	(2.41)	0.0%	9	0%	-2%	0.00	0.00	-34.2%	-20.0%	0.045	0.031
Future Kid Entertainment and Real Estate	0.072	-0.008	-9.75%	0.42	27.28	16.0%	8	-10%	-18%	0.00	0.00	1.5%	0.9%	0.110	0.069
Al Eid Food	0.060	-0.001	-0.99%	0.40	4.79	0.0%	7	4%	-9%	0.00	0.05	8.4%	6.1%	0.080	0.038
Kuwait Hotels	0.101	0.000	0.00%	1.42	(5.82)	0.0%	6	-5%	1%	0.00	0.00	-24.4%	-13.2%	0.111	0.069
Palms Agro Production	0.079	0.014	20.92%	0.66	(55.41)	12.7%	4	21%	96%	0.00	0.02	-1.2%	-0.9%	0.065	0.025
Kuwait Cable Vision	0.014	0.000	0.00%	0.52	(11.65)	0.0%	1	0%	0%	0.00	0.00	-4.5%	-3.0%	0.026	0.012
Total Consumer services - 14 Companies				0.86	36.23	4.6%	382			0.45	5.38	2.38%	2.72%		

Financial services	Price			Valuation Multiples			MKT Cap	Price Performance		Trading Indicators		ROE	ROA	52 Week (KD)	
Company	Close (KD)	Day Δ	Day % Δ	PBV(X)	PE(X)	DY%	Mn KD	MTD(%)	YTD (%)	Value (Mn KD)	(Mn Shrs)	(%)	(%)	High	Low
Egypt Kuwait Holding	0.365	0.000	0.00%	2.16	12.32	5.4%	374	0%	-19%	0.00	0.00	17.6%	7.1%	0.500	0.318
Kuwait Projects Company Holding	0.157	0.002	1.29%	0.84	9.48	5.9%	285	5%	-27%	0.51	3.27	8.9%	0.3%	0.225	0.147
National Industries Group Holding	0.178	0.003	1.71%	0.67	5.48	6.1%	254	7%	-26%	0.69	3.88	12.3%	3.7%	0.247	0.121
Boursa Kuwait Securities Co	1.156	-0.009	-0.77%	7.23	24.20	0.0%	232	1%	0%	0.47	0.41	29.9%	26.5%	1.210	0.990
GFH Financial Group	0.047	0.000	0.21%	0.51	6.42	6.0%	159	-4%	-32%	0.11	2.43	8.0%	1.3%	0.074	0.042
National Investments	0.138	0.000	0.00%	0.61	10.26	5.9%	110	4%	0%	0.22	1.61	5.9%	5.0%	0.158	0.080
Tamdeen Investment	0.318	0.013	4.26%	0.39	13.19	3.7%	109	4%	-8%	0.00	0.00	3.0%	2.2%	0.400	0.199
Alimtiq Investment Group	0.097	0.001	0.52%	0.46	5.05	8.2%	100	6%	-23%	0.34	3.52	9.1%	5.2%	0.137	0.071
Commercial Facilities	0.185	-0.001	-0.54%	0.57	7.13	9.1%	94	2%	-15%	0.03	0.14	8.0%	4.2%	0.235	0.179
Aayan Leasing and Investment	0.091	-0.002	-2.14%	1.07	(5.01)	2.0%	73	6%	97%	1.53	16.68	-21.4%	-4.9%	0.102	0.032
Kuwait Investment	0.131	0.000	0.00%	0.57	4.10	7.7%	72	3%	-12%	0.05	0.40	13.9%	6.0%	0.172	0.095
Noor Financial Investment	0.168	0.000	0.00%	1.03	8.21	2.9%	66	6%	40%	0.00	0.01	12.5%	7.5%	0.184	0.076

DAILY MARKET COVERAGE REPORT

NIC MENA SECURITIES - RESEARCH AND STUDIES DEP



Financial services	Price			Valuation Multiples			MKT Cap	Price Performance		Trading Indicators		ROE	ROA	52 Week (KD)		
	Company	Close (KD)	Day Δ	Day % Δ	PBV(X)	PE(X)	DY%	Mn KD	MTD(%)	YTD (%)	Value (Mn KD)	(Mn Shrs)	(%)	(%)	High	Low
Arzan Financial Group for Financing and Invest	0.062	0.002	2.48%	0.50	45.08	0.0%	49	11%	163%	2.85	46.07	1.1%	0.7%	0.064	0.022	
Kuwait Financial Centre	0.086	-0.002	-2.39%	0.43	5.90	5.8%	41	2%	-19%	0.06	0.73	7.3%	3.5%	0.121	0.070	
Gulf Investment House	0.098	0.002	2.08%	1.10	181.27	0.0%	40	4%	52%	0.13	1.32	0.6%	0.5%	0.108	0.038	
Al Bareaq Holding	0.076	0.001	1.06%	0.80	15.18	0.0%	33	-4%	-24%	0.06	0.83	5.2%	5.0%	0.110	0.075	
Arabi Group Holdings	0.198	0.000	0.00%	1.07	(19.90)	0.0%	33	0%	-28%	0.00	0.00	-5.4%	-0.6%	0.337	0.089	
Kuwait and Middle East Financial Investment	0.112	-0.001	-0.88%	1.82	44.73	0.0%	29	2%	25%	0.02	0.16	4.1%	3.2%	0.138	0.063	
Privatization Holding	0.045	0.001	1.60%	0.33	(40.12)	0.0%	27	4%	-12%	0.01	0.17	-0.8%	-0.5%	0.059	0.037	
Asiya Capital Investments	0.034	0.000	-0.29%	0.36	17.47	0.2%	26	6%	-17%	0.01	0.33	2.1%	2.0%	0.041	0.029	
Umm Al Qaiwain General Investment Co	0.072	0.000	0.00%	0.48	13.53	5.1%	26	0%	8%	0.00	0.03	3.6%	3.3%	0.096	0.052	
Securities House	0.047	0.000	0.86%	0.64	(68.27)	0.0%	26	9%	3%	0.44	9.34	-0.9%	-0.7%	0.050	0.027	
KAMCO Investment	0.075	0.001	0.94%	0.46	8.49	0.0%	26	4%	-17%	0.12	1.61	5.4%	2.3%	0.111	0.060	
First Investment	0.036	0.001	1.42%	0.56	(0.49)	0.0%	23	14%	4%	0.77	21.65	-113.6%	-62.0%	0.045	0.022	
Inovest BSC Public	0.073	-0.002	-2.15%	0.51	9.75	8.1%	22	-1%	17%	0.06	0.79	5.2%	2.9%	0.080	0.044	
Coast Investment and Development	0.037	0.001	2.23%	0.39	36.47	0.0%	21	2%	-8%	0.00	0.01	1.1%	1.0%	0.045	0.026	
Al Madar Finance and Investment	0.084	0.000	-0.12%	0.76	12.50	0.0%	17	2%	-10%	0.01	0.11	6.1%	5.0%	0.143	0.062	
Bayan Investment	0.045	-0.001	-1.54%	0.45	(23.15)	0.0%	16	-4%	18%	0.00	0.02	-1.9%	-0.8%	0.053	0.031	
Al Manar Financing and Leasing	0.049	0.000	0.00%	0.45	12.63	1.0%	15	11%	-5%	0.00	0.00	3.5%	2.7%	0.060	0.037	
Manazel Holding	0.034	0.000	0.89%	0.74	21.79	0.0%	15	6%	-14%	0.08	2.47	3.4%	0.8%	0.048	0.021	
Kuwait Finance and Investment	0.045	-0.001	-1.10%	0.36	20.21	0.0%	14	3%	-9%	0.00	0.00	1.8%	1.2%	0.058	0.038	
National International Holding	0.061	-0.001	-1.61%	0.32	7.34	4.8%	13	2%	-17%	0.01	0.09	4.4%	3.3%	0.081	0.051	
Osoul Investment	0.082	0.001	1.49%	0.62	6.86	0.0%	13	0%	7%	0.00	0.02	9.0%	8.2%	0.121	0.070	
UniCap Investment and Finance	0.045	0.000	0.00%	0.46	(22.53)	0.0%	11	6%	-18%	0.00	0.08	-2.0%	-1.0%	0.057	0.035	
Amar Finance and Leasing	0.053	0.000	0.00%	0.60	44.54	0.0%	10	-5%	40%	0.00	0.00	1.3%	1.2%	0.064	0.037	
Gulf North Africa Holding	0.060	0.001	0.85%	0.79	76.66	0.0%	9	2%	-4%	0.01	0.09	1.0%	0.6%	0.062	0.052	
Al Salam Group Holding	0.029	0.000	-0.69%	0.25	215.91	0.0%	8	12%	-2%	0.16	5.47	0.1%	0.1%	0.033	0.018	
International Financial Advisors	0.031	0.000	0.00%	0.93	(0.42)	2.1%	8	0%	-42%	0.00	0.00	-222.8%	-19.3%	0.060	0.027	
Amwal International Investment	0.036	0.003	9.91%	0.66	13.12	0.0%	6	0%	18%	0.00	0.00	5.0%	2.6%	0.044	0.030	
Al Madina for Finance and Investment	0.014	0.000	0.00%	0.45	(2.54)	0.0%	5	10%	-10%	0.08	5.91	-17.9%	-7.7%	0.019	0.009	
Credit Rating and Collection	0.032	0.000	0.00%	0.97	(21.20)	0.0%	5	0%	58%	0.00	0.00	-4.6%	-4.3%	0.035	0.019	
Ekttitab Holding	0.015	0.000	-0.65%	0.37	(10.70)	0.0%	5	-1%	1%	0.08	5.43	-3.4%	-3.0%	0.017	0.010	
Kuwait Syrian Holding Co	0.028	0.001	1.85%	0.24	(14.05)	0.0%	5	2%	-13%	0.00	0.01	-1.7%	-1.1%	0.043	0.022	
Warba Capital Holding	0.048	0.003	6.67%	0.53	(7.63)	0.0%	5	3%	-26%	0.04	0.95	-7.0%	-6.2%	0.071	0.042	
National Consumer Holding	0.048	0.000	0.00%	0.53	235.16	0.0%	4	0%	-13%	0.00	0.00	0.2%	0.2%	0.100	0.010	
Al Deera Holding	0.016	0.000	0.00%	0.70	(9.02)	0.0%	3	0%	-20%	0.00	0.00	-7.7%	-1.7%	0.022	0.011	
Al Mal Investment Company	0.009	0.000	2.20%	0.41	(0.87)	0.0%	3	3%	-7%	0.07	7.86	-47.6%	-23.3%	0.016	0.008	
Gulf Franchising Holding	0.045	-0.003	-5.22%	0.71	(1.97)	0.0%	2	-5%	-40%	0.00	0.02	-36.2%	-10.8%	0.160	0.001	
Tamkeen Holding	0.005	0.000	0.00%	0.05	(7.18)	0.0%	0	0%	0%	0.00	0.00	-0.7%	-0.7%	0.005	0.005	
Total Financial services - 49 Companies				0.73	16.46	4.1%	2,543				9.04	143.93	4.42%	4.14%		

DAILY MARKET COVERAGE REPORT

NIC MENA SECURITIES - RESEARCH AND STUDIES DEP

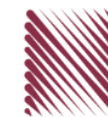


Health care	Price			Valuation Multiples			MKT Cap	Price Performance		Trading Indicators		ROE	ROA	52 Week (KD)	
Company	Close (KD)	Day Δ	Day % Δ	PBV(X)	PE(X)	DY%	Mn KD	MTD(%)	YTD (%)	Value (Mn KD)	(Mn Shrs)	(%)	(%)	High	Low
Al-Maidan Clinic for Oral Health Services	1.220	0.000	0.00%	7.90	47.78	0.6%	305	0%	0%	0.00	0.00	16.5%	10.9%	1.240	1.220
Advanced Technology	0.597	0.000	0.00%	1.55	48.60	2.5%	90	0%	-26%	0.00	0.00	3.2%	0.7%	0.900	0.580
Yiaco Medical	0.707	0.000	0.00%	6.06	52.72	0.0%	12	0%	0%	0.00	0.00	11.5%	0.6%	0.707	0.707
Total Health care - 3 Companies				4.14	48.09	1.0%	407			0.00	0.00	8.61%	4.68%		

Industrials	Price			Valuation Multiples			MKT Cap	Price Performance		Trading Indicators		ROE	ROA	52 Week (KD)	
Company	Close (KD)	Day Δ	Day % Δ	PBV(X)	PE(X)	DY%	Mn KD	MTD(%)	YTD (%)	Value (Mn KD)	(Mn Shrs)	(%)	(%)	High	Low
Agility Public Warehousing	0.687	0.007	1.03%	1.19	15.15	2.6%	1,315	4%	-4%	1.39	2.03	7.9%	4.2%	0.748	0.357
Human Soft Holding	2.730	0.020	0.74%	4.13	9.26	6.7%	332	5%	-9%	1.19	0.44	44.6%	30.3%	3.470	1.944
ALAFCO Aviation Lease and Finance	0.165	0.001	0.61%	0.49	8.88	6.1%	157	5%	-39%	0.55	3.35	5.5%	1.4%	0.278	0.138
Kuwait Cement	0.219	0.005	2.34%	0.75	38.87	6.8%	156	13%	-11%	0.34	1.54	1.9%	1.3%	0.270	0.144
Gulf Cable and Electrical Industries	0.717	-0.001	-0.14%	0.86	35.56	3.8%	151	5%	47%	0.10	0.13	2.4%	2.2%	0.742	0.390
Integrated Holding	0.362	-0.003	-0.82%	1.16	10.08	11.0%	80	1%	-34%	0.43	1.19	11.5%	8.5%	0.600	0.342
Kuwait Portland Cement	0.776	0.016	2.11%	1.04	10.25	12.7%	78	3%	-21%	0.01	0.02	10.2%	8.2%	1.150	0.683
Educational Holding Group	0.305	-0.004	-1.29%	1.76	9.66	4.9%	75	-1%	-31%	0.00	0.00	18.3%	16.7%	0.475	0.228
United Projects for Aviation Services	0.465	0.000	0.00%	0.98	7.96	4.5%	74	0%	-9%	0.00	0.00	12.3%	7.8%	0.512	0.367
Heavy Engineering Industries and Shipbuilding	0.376	0.001	0.27%	1.09	6.04	7.8%	68	4%	-7%	0.06	0.15	18.0%	5.9%	0.419	0.298
National Industries	0.155	0.001	0.65%	0.64	12.63	6.4%	54	0%	-6%	0.00	0.00	5.1%	3.8%	0.173	0.143
ACICO Industries	0.102	0.000	0.00%	0.33	13.28	4.8%	34	1%	-23%	0.00	0.03	2.5%	0.6%	0.137	0.081
Kuwait Company for Process Plant Constructi	0.310	0.001	0.32%	1.23	6.64	5.8%	33	2%	28%	0.02	0.08	18.5%	7.7%	0.337	0.175
Ras Al Khaimah for White Cement and Constr	0.065	0.000	0.00%	0.51	19.94	8.4%	33	0%	0%	0.00	0.00	2.6%	2.0%	0.080	0.055
Combined Group Contracting	0.187	0.003	1.63%	0.65	8.42	11.0%	30	9%	-25%	0.39	2.12	7.7%	1.2%	0.251	0.138
Gulf Cement	0.032	0.000	0.00%	0.32	(11.67)	13.0%	26	-3%	-42%	0.00	0.01	-2.7%	-2.2%	0.060	0.029
Sharjah Cement and Industrial Development	0.042	0.000	0.00%	0.21	25.32	12.4%	26	0%	0%	0.00	0.00	0.8%	0.6%	0.061	0.042
KGL Logistics	0.030	0.000	1.02%	0.22	4.84	0.1%	23	10%	-21%	0.16	5.22	4.6%	2.9%	0.043	0.023
Kuwait and Gulf Link Transport	0.055	0.000	0.73%	0.23	16.66	0.0%	15	17%	-17%	0.38	6.86	1.4%	0.4%	0.077	0.042
Shuaiba Industrial	0.140	0.010	7.69%	0.78	43.23	7.1%	14	8%	-10%	0.00	0.00	1.8%	1.4%	0.180	0.122
National Cleaning	0.058	-0.001	-1.54%	0.34	7.71	8.8%	12	1%	-17%	0.00	0.08	4.4%	1.5%	0.088	0.047
Fujairah Cement Industries	0.034	0.000	0.00%	0.14	16.54	12.3%	12	0%	-24%	0.00	0.00	0.8%	0.4%	0.052	0.029
Hilal Cement	0.114	0.000	0.00%	0.99	(9.37)	13.2%	12	0%	14%	0.00	0.00	-10.6%	-6.2%	0.126	0.063
Mubarrad Holding	0.063	0.000	0.48%	0.50	10.20	7.4%	10	4%	-28%	0.02	0.29	4.9%	4.1%	0.089	0.049
Specialities Group Holding	0.064	0.000	0.47%	0.34	7.57	0.0%	10	3%	-17%	0.02	0.34	4.5%	3.5%	0.078	0.050
National Ranges	0.015	0.000	0.00%	0.27	(1.10)	0.0%	4	6%	49%	0.02	1.06	-24.9%	-5.3%	0.018	0.007
Salbookh Trading	0.035	0.000	-0.84%	0.48	(2.06)	0.0%	4	-5%	-32%	0.01	0.18	-23.2%	-15.9%	0.051	0.026
Metal and Recycling	0.041	0.002	4.34%	0.34	(1.74)	0.0%	4	-5%	-25%	0.01	0.21	-19.7%	-10.1%	0.070	0.020
Equipment Holding	0.016	0.000	0.00%	0.32	(187.07)	0.0%	2	1%	-26%	0.00	0.00	-0.2%	-0.1%	0.024	0.013
Total Industrials - 29 Companies				0.90	13.55	4.9%	2,842			5.09	25.33	6.67%	5.05%		

DAILY MARKET COVERAGE REPORT

NIC MENA SECURITIES - RESEARCH AND STUDIES DEP



Insurance		Price			Valuation Multiples			MKT Cap	Price Performance		Trading Indicators		ROE	ROA	52 Week (KD)	
Company	Close (KD)	Day Δ	Day % Δ	PBV(X)	PE(X)	DY%	Mn KD	MTD(%)	YTD (%)	Value (Mn KD)	(Mn Shrs)	(%)	(%)	High	Low	
Gulf Insurance Group	0.635	-0.015	-2.31%	1.09	8.86	5.8%	118	-11%	-4%	0.01	0.01	12.3%	1.7%	0.720	0.550	
Al Ahleia Insurance	0.406	0.000	0.00%	0.77	8.18	8.3%	84	2%	0%	0.00	0.00	9.4%	3.3%	0.445	0.367	
Kuwait Insurance	0.360	0.000	0.00%	0.59	6.97	6.6%	67	0%	9%	0.00	0.00	8.5%	4.6%	0.387	0.300	
Kuwait Reinsurance	0.221	0.000	0.00%	0.84	9.46	2.0%	45	0%	60%	0.00	0.00	8.9%	3.2%	0.221	0.126	
Bahrain Kuwait Insurance	0.200	0.000	0.00%	0.93	12.87	6.1%	28	0%	0%	0.00	0.01	7.2%	1.1%	0.200	0.200	
Warba Insurance	0.078	0.000	0.00%	0.34	11.06	0.0%	13	7%	29%	0.00	0.00	3.1%	1.0%	0.094	0.051	
First Takaful Insurance	0.040	0.000	0.00%	0.48	5.03	0.0%	4	7%	4%	0.00	0.00	9.6%	5.9%	0.056	0.031	
Wethaq Takaful Insurance	0.023	0.001	2.68%	0.21	(29.11)	0.0%	3	-3%	-8%	0.00	0.04	-0.7%	-0.7%	0.035	0.018	
Total Insurance - 8 Companies				0.76	8.61	5.8%	361			0.01	0.06	8.86%	3.00%			

Oil and Gas		Price			Valuation Multiples			MKT Cap	Price Performance		Trading Indicators		ROE	ROA	52 Week (KD)	
Company	Close (KD)	Day Δ	Day % Δ	PBV(X)	PE(X)	DY%	Mn KD	MTD(%)	YTD (%)	Value (Mn KD)	(Mn Shrs)	(%)	(%)	High	Low	
National Petroleum Services	1.100	0.000	0.00%	2.62	9.38	6.4%	107	0%	-6%	0.00	0.00	27.9%	23.6%	1.389	0.903	
Independent Petroleum Group	0.430	0.000	0.00%	0.79	11.72	7.0%	78	0%	-11%	0.00	0.00	6.8%	2.2%	0.497	0.375	
Burgan for Well Drilling Trading and Maintenanc	0.075	0.001	1.49%	0.27	7.62	0.0%	17	-3%	-6%	0.00	0.01	3.6%	1.1%	0.098	0.060	
Energy House Holding	0.027	0.005	24.65%	0.83	(3.68)	0.0%	20	37%	18%	0.15	6.08	-22.5%	-17.0%	0.036	0.014	
Gulf Petroleum Investment	0.021	0.000	0.98%	0.23	(6.64)	0.0%	9	11%	2%	0.28	13.61	-3.4%	-2.3%	0.023	0.012	
Senergy Holding	0.019	0.000	-1.05%	0.38	(0.79)	0.0%	4	-2%	-15%	0.01	0.62	-47.9%	-30.4%	0.027	0.014	
Total Oil and Gas - 6 Companies				0.85	27.27	5.2%	235			0.44	20.32	3.10%	2.18%			

Real estate		Price			Valuation Multiples			MKT Cap	Price Performance		Trading Indicators		ROE	ROA	52 Week (KD)	
Company	Close (KD)	Day Δ	Day % Δ	PBV(X)	PE(X)	DY%	Mn KD	MTD(%)	YTD (%)	Value (Mn KD)	(Mn Shrs)	(%)	(%)	High	Low	
Mabane Co.	0.758	0.005	0.66%	1.77	14.85	1.4%	838	3%	-12%	0.42	0.55	11.9%	5.8%	0.877	0.434	
Salhia Real Estate	0.402	-0.002	-0.50%	1.22	9.24	5.0%	199	1%	-4%	0.10	0.24	13.2%	5.8%	0.460	0.330	
Commercial Real Estate	0.105	0.000	0.00%	0.64	13.01	5.4%	190	4%	14%	0.03	0.33	5.0%	2.7%	0.111	0.083	
National Real Estate	0.077	0.001	1.86%	0.42	10.11	0.0%	116	3%	-12%	0.34	4.53	4.2%	2.4%	0.090	0.058	
Tamdeen Real Estate	0.260	0.001	0.39%	0.38	12.68	3.9%	105	0%	-19%	0.00	0.00	3.0%	2.2%	0.343	0.241	
Kuwait Real Estate	0.098	0.002	1.66%	0.69	12.45	0.4%	88	5%	-6%	0.11	1.16	5.5%	2.2%	0.115	0.070	
United Real Estate	0.050	0.001	2.04%	0.29	(7.44)	0.0%	54	3%	-18%	0.00	0.03	-3.9%	-1.2%	0.063	0.045	
First Dubai for Real Estate Development	0.042	0.001	1.20%	0.57	46.17	0.9%	42	9%	18%	0.06	1.42	1.2%	1.0%	0.055	0.027	
Al Mazaya Holding	0.055	0.001	1.11%	0.43	(3.91)	0.1%	34	4%	-8%	0.05	0.92	-11.0%	-3.8%	0.067	0.047	
Ajial Real Estate Entertainment	0.149	0.003	2.05%	0.23	14.40	0.0%	29	0%	-16%	0.01	0.05	1.6%	1.4%	0.213	0.115	
Injazzat Real Estate Development	0.079	0.000	0.00%	0.51	(3.79)	8.7%	26	0%	-1%	0.00	0.00	-13.4%	-7.0%	0.091	0.061	

DAILY MARKET COVERAGE REPORT

NIC MENA SECURITIES - RESEARCH AND STUDIES DEP



Real estate Company	Price			Valuation Multiples			MKT Cap	Price Performance		Trading Indicators		ROE	ROA	52 Week (KD)	
	Close (KD)	Day Δ	Day % Δ	PBV(X)	PE(X)	DY%	Mn KD	MTD(%)	YTD (%)	Value (Mn KD)	(Mn Shrs)	(%)	(%)	High	Low
Munshaat Real Estate Projects	0.082	0.000	-0.12%	0.56	30.18	2.6%	26	16%	11%	0.00	0.00	1.8%	0.7%	0.090	0.045
Aayan Real Estate	0.060	0.000	0.34%	0.35	11.72	8.0%	25	2%	-18%	0.01	0.24	3.0%	1.9%	0.080	0.048
Al Argan International Real Estate	0.093	0.000	0.00%	0.27	30.14	5.3%	24	0%	-11%	0.00	0.00	0.9%	0.3%	0.135	0.060
Al-Enmaa Real Estate	0.052	0.002	4.02%	0.52	13.67	0.0%	23	10%	-17%	0.10	1.94	3.8%	2.4%	0.079	0.037
Ream Real Estate	0.204	0.000	0.00%	1.56	(8.21)	1.1%	22	0%	132%	0.00	0.00	-19.0%	-10.1%	0.204	0.060
Arkan Al Kuwait Real Estate	0.090	0.005	5.29%	0.64	9.70	8.7%	22	10%	1%	0.00	0.00	6.6%	3.5%	0.100	0.076
Kuwait Business Town Real Estate	0.032	0.000	-0.94%	0.29	8.04	0.2%	20	7%	-28%	0.07	2.22	3.6%	2.7%	0.046	0.022
Dalqan Real Estate	0.318	0.000	0.00%	2.91	58.98	0.0%	19	0%	0%	0.00	0.00	4.9%	4.9%	0.318	0.318
Sokouk Holding	0.029	-0.001	-2.05%	0.35	(4.79)	0.0%	16	4%	-19%	0.07	2.52	-7.4%	-4.7%	0.040	0.022
Tijara and Realestate Investment	0.049	0.008	19.75%	0.46	12.76	4.1%	18	20%	-3%	0.06	1.38	3.6%	1.9%	0.055	0.034
Al-Arabiya Real Estate	0.029	0.001	2.45%	0.26	8.88	2.1%	15	12%	0%	0.59	20.31	2.9%	1.1%	0.033	0.020
Aqar Real Estate Investments	0.060	0.000	0.00%	0.43	5.01	8.3%	13	1%	-25%	0.00	0.03	8.7%	7.3%	0.089	0.058
Mashaer Holding	0.059	-0.002	-2.97%	0.45	6.33	0.0%	10	3%	-23%	0.02	0.26	7.1%	5.0%	0.086	0.048
Investors Holding Group	0.017	0.000	0.58%	0.87	(0.82)	0.0%	11	10%	116%	0.19	10.67	-106.5%	-57.2%	0.032	0.007
Dar Al Thuraya Real Estate	0.072	0.000	-0.28%	0.68	18.95	0.0%	11	-5%	-2%	0.00	0.00	3.6%	3.6%	0.190	0.040
Osos Holding Group	0.086	-0.002	-1.93%	0.69	6.51	11.0%	9	0%	-13%	0.00	0.03	10.5%	7.0%	0.118	0.081
Al Massaleh Real Estate	0.037	0.001	2.78%	0.42	(5.16)	0.0%	9	7%	0%	0.00	0.00	-8.1%	-1.9%	0.040	0.026
Abyaar Real Estate Development	0.007	0.000	0.00%	0.21	(0.51)	0.0%	8	0%	-6%	0.00	0.00	-40.9%	-12.4%	0.013	0.005
Kuwait Remal Real Estate	0.023	0.001	3.13%	0.35	(3.17)	0.0%	7	15%	-5%	0.02	0.77	-11.0%	-3.9%	0.027	0.013
Kuwait Real Estate Holding	0.026	0.000	0.00%	0.04	0.70	6.8%	5	1%	-8%	0.00	0.00	5.5%	2.2%	0.034	0.022
Taameer Real Estate Investment	0.019	0.000	0.52%	0.28	(4.06)	0.0%	4	2%	-28%	0.03	1.61	-7.0%	-4.5%	0.034	0.013
Sanam Real Estate	0.033	0.000	0.00%	0.42	44.69	0.0%	4	-6%	-17%	0.00	0.00	0.9%	0.9%	0.043	0.027
Mena Real Estate	0.029	0.000	-0.34%	0.20	(64.63)	0.0%	4	3%	-30%	0.02	0.67	-0.3%	-0.2%	0.043	0.021
Al Masaken International Real Estate Developr	0.036	0.000	0.00%	0.40	43.60	0.5%	4	0%	-18%	0.00	0.00	0.9%	0.4%	0.074	0.026
Real Estate Trade Centers	0.029	0.002	7.75%	0.16	166.84	0.0%	4	0%	17%	0.00	0.00	0.1%	0.1%	0.050	0.018
Ajwan Gulf Real Estate	0.011	0.000	0.00%	0.19	(7.68)	0.0%	2	0%	-29%	0.00	0.00	-2.5%	-2.2%	0.016	0.009
Effect Real Estate	0.021	0.000	0.00%	0.29	(8.85)	4.9%	2	0%	0%	0.00	0.00	-3.3%	-3.2%	0.021	0.021
Al Mudon International Real Estate	0.016	0.000	0.00%	0.12	(8.22)	0.0%	2	0%	-35%	0.00	0.00	-1.5%	-1.4%	0.029	0.015
Total Real estate - 39 Companies				0.67	24.09	2.4%	2,058			2.31	51.88	2.79%	2.96%		

DAILY MARKET COVERAGE REPORT

NIC MENA SECURITIES - RESEARCH AND STUDIES DEP



Technology	Price			Valuation Multiples			MKT Cap	Price Performance		Trading Indicators		ROE	ROA	52 Week (KD)	
	Company	Close (KD)	Day Δ	Day % Δ	PBV(X)	PE(X)		DY%	Mn KD	MTD(%)	YTD (%)			Value (Mn KD)	(Mn Shrs)
Automated Systems	0.073	0.003	4.17%	0.57	(70.32)	5.5%	7	3%	2%	0.00	0.02	-0.8%	-0.7%	0.087	0.051
Total Technology - 1 Companies				0.57	(70.32)	5.5%	7			0.00	0.02	-0.81%	-0.73%		

Telecom	Price			Valuation Multiples			MKT Cap	Price Performance		Trading Indicators		ROE	ROA	52 Week (KD)	
	Company	Close (KD)	Day Δ	Day % Δ	PBV(X)	PE(X)		DY%	Mn KD	MTD(%)	YTD (%)			Value (Mn KD)	(Mn Shrs)
Mobile Telecommunications	0.597	0.009	1.53%	1.99	11.91	5.2%	2,583	4%	-1%	4.29	7.22	16.7%	4.6%	0.604	0.407
Kuwait Telecommunications	0.840	0.000	0.00%	1.95	9.62	4.2%	419	0%	7%	0.03	0.03	20.2%	11.1%	0.870	0.680
National Mobile Telecommunications	0.615	0.004	0.65%	0.54	10.23	10.5%	308	2%	-26%	0.05	0.07	5.3%	2.4%	0.835	0.550
AAN Digital Services	0.013	0.000	-0.75%	0.39	43.05	0.0%	11	2%	-2%	0.28	20.88	0.9%	0.7%	0.021	0.009
Hayat Communications	0.059	0.000	0.34%	0.50	24.83	0.0%	5	0%	-22%	0.00	0.00	2.0%	0.8%	0.098	0.033
Telecom - 5 Companies				1.57	11.43	5.5%	3,327			4.64	28.21	13.70%	7.86%		

Utilities	Price			Valuation Multiples			MKT Cap	Price Performance		Trading Indicators		ROE	ROA	52 Week (KD)	
	Company	Close (KD)	Day Δ	Day % Δ	PBV(X)	PE(X)		DY%	Mn KD	MTD(%)	YTD (%)			Value (Mn KD)	(Mn Shrs)
Shamal Az-Zour Al-Oula Power & Water	0.328	-0.002	-0.61%	4.71	29.33	0.0%	361	3%	0%	1.41	4.30	16.1%	2.3%	0.500	0.297
Total Utilities - 1 Companies				4.71	29.33	0.0%	361			1.41	4.30	16.06%	2.26%		

Total Market 173 Companies				1.31	15.80	3.72%	32.72			63.81	393.04	8.26%	2.76%		
-----------------------------------	--	--	--	-------------	--------------	--------------	--------------	--	--	--------------	---------------	--------------	--------------	--	--

End of Report

The information contained in this document is proprietary to NIC and is for use only by the persons to whom it is issued. This document is confidential and may not be distributed either in part or in whole without the express agreement of NIC. It is intended solely for the use of the individual or entity to whom it is addressed and others authorized to receive it.



شركة الاستثمار الوطنية
NATIONAL INVESTMENTS COMPANY

Sharq, Al Mutanabi Street, Khaleejia Tower | P.O. Box 25667, Safat 13117, Kuwait

T.: +965 2226 6666 | Fax: +965 2226 6793 | www.nic.com.kw