

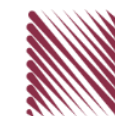
شركة الاستثمارات الوطنية
NATIONAL INVESTMENTS COMPANY

Boursa Kuwait – Daily Market Report
MENA Securities – Research & Studies Dep.

Monday, October 19, 2020

DAILY MARKET COVERAGE REPORT

NIC MENA SECURITIES - RESEARCH AND STUDIES DEP



Index	Close	DTD Chg Net	DTD (%)	YTD (%)	52W High	52W Low	MKT CAP Bn (KD)	PBV (X)	PE (X)	DY (%)
All Share Index	5,609.28	-76.54	-1.35%	-10.8%	6,416.43	4,339.58	32.51	1.30	15.70	3.75%
Premier Index	6,218.92	-96.01	-1.52%	-10.8%	7,172.32	4,498.65	24.29	1.75	14.60	3.44%
Main Index	4,398.42	-36.72	-0.83%	-10.7%	4,932.47	3,965.63	8.22	0.73	20.21	4.64%
NIC 50 Index	6,881.62	-92.73	-1.33%	-7.7%	7,517.86	5,014.61	27.96	1.53	15.22	3.56%

Index	Value Mn(KD)	Volume (Mn share)
All Share Index	66.71	314.76
Premier Index	57.22	135.39
Main Index	9.50	179.38
NIC 50 Index	63.82	227.48

Market Breadth	UP ↑	Down ↓	No Chg ↔
All Share Index	31	86	56
Premier Index	3	16	1
Main Index	28	70	55
NIC 50 Index	9	37	4

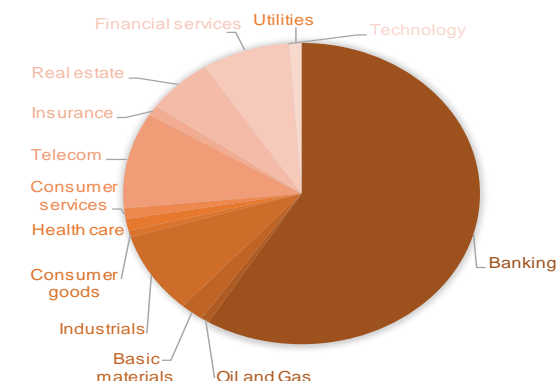
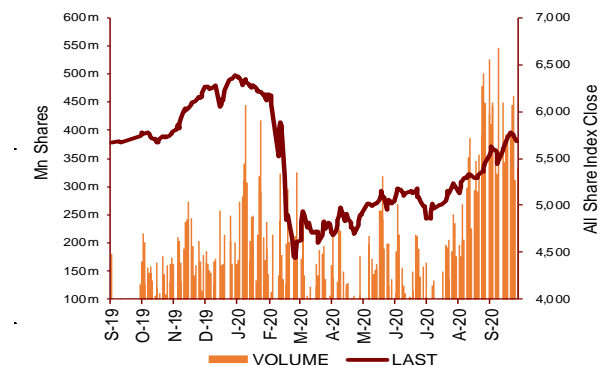
Today's Top 5 Gainer %	Close KD	Value KD	DTD (%)
Future Kid Entertainment and Real E	0.080	3,110	10.80%
Ream Real Estate	0.114	1	5.56%
Al Argan International Real Es	0.094	47	5.16%
Aqar Real Estate Investments	0.063	6	4.65%
Senergy Holding	0.019	11,426	4.37%

Today's Top 5 Loser %	Close KD	Value KD	DTD (%)
United Projects for Aviation	0.390	6,981	-16.13%
Al-Arabiya Real Estate	0.026	181,299	-7.14%
Kuwait Syrian Holding Co	0.029	1,593	-7.05%
National Ranges	0.015	36,637	-6.25%
Burqan for Well Drilling Tre	0.077	1,032	-6.10%

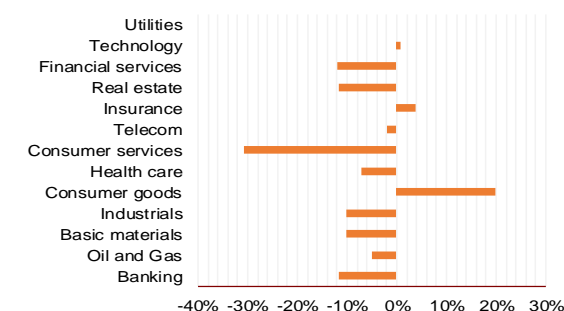
Today's Top 5 by Value	Close KD	Trade Val Mn(KD)	DTD (%)
Kuwait Finance House	0.687	12.67	-1.43%
National Bank of Kuwait	0.878	12.18	-1.24%
Warba Bank	0.245	5.07	-1.61%
Ahli United Bank BSC	0.243	4.96	-3.19%
Mobile Telecommunications	0.601	4.83	-2.12%

Top 5 by Volume	Close KD	Trade Vol Mn(Shrs)	DTD (%)
Al Madina for Finance and	0.017	32.99	-2.37%
Warba Bank	0.245	20.79	-1.61%
Ahli United Bank BSC	0.243	20.28	-3.19%
Kuwait Finance House	0.687	18.39	-1.43%
AAN Digital Services	0.014	15.42	1.49%

Sector	Close	DTD Chg Net	DTD (%)	YTD (%)	52W High	52W Low	MKT CAP Bn (KD)	PBV (X)	PE (X)	DY (%)
Banking	1,310.49	-19,530	-1.47%	-11.7%	1,536.8	986.4	19.10	1.73	15.92	3.3%
Oil and Gas	1,176.82	-7,520	-0.63%	-5.0%	1,372.2	985.7	0.24	0.85	27.55	5.1%
Basic materials	815.81	-15,150	-1.82%	-10.1%	977.1	561.7	0.69	0.98	15.00	7.4%
Industrials	833.43	-12,720	-1.50%	-10.1%	937.5	602.9	2.84	0.90	13.55	4.9%
Consumer goods	763.59	0,320	0.04%	19.8%	810.7	548.6	0.23	1.51	92.54	2.2%
Health care	821.04	0,000	0.00%	-7.2%	911.8	815.0	0.41	4.15	48.14	1.0%
Consumer services	743.65	-7,070	-0.94%	-30.7%	1,083.1	674.8	0.38	0.85	35.70	4.7%
Telecom	1,093.20	-21,090	-1.89%	-2.1%	1,134.2	802.2	3.35	1.58	11.51	5.5%
Insurance	989.08	-7,300	-0.73%	3.7%	1,068.3	901.0	0.35	0.74	8.39	5.9%
Real estate	935.93	-9,450	-1.00%	-11.7%	1,083.4	763.2	1.97	0.64	23.05	2.5%
Financial services	951.16	-3,720	-0.39%	-12.0%	1,097.0	801.4	2.60	0.74	16.81	4.0%
Technology	519.44	10,190	2.00%	0.8%	632.9	371.0	0.01	0.56	-69.26	5.6%
Utilities	857.89	-2,640	-0.31%	0.0%	1,042.1	781.6	0.36	4.68	29.15	0.0%
	5,609.28	-76.54	-1.35%	-10.8%	6,416.4	4,339.6	32.51	1.30	15.70	3.75%



YTD Sector Performance %



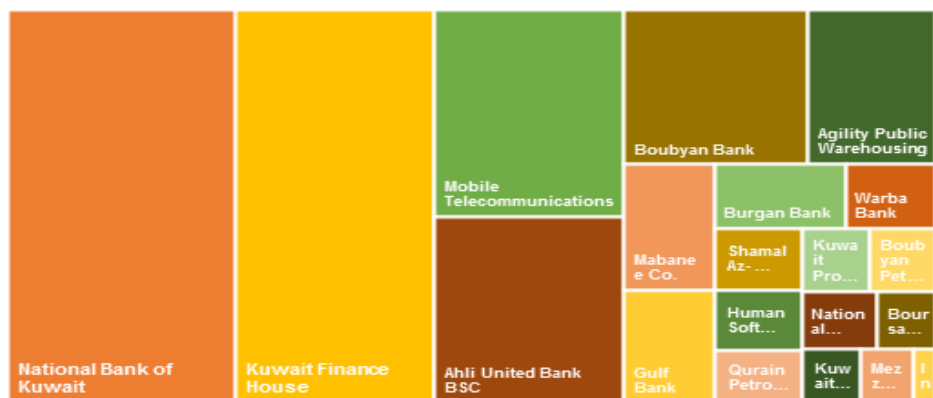
DAILY MARKET COVERAGE REPORT

NIC MENA SECURITIES - RESEARCH AND STUDIES DEP

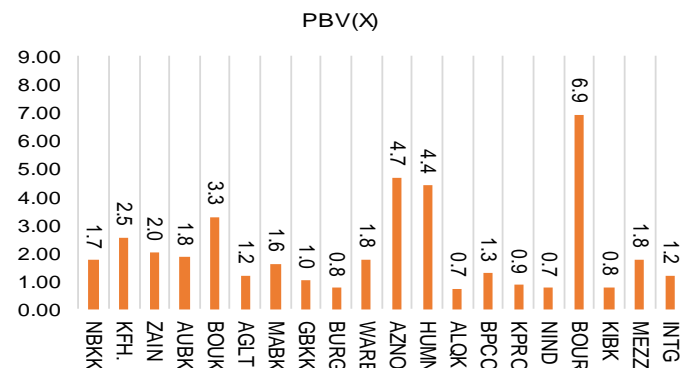


Premier Market	Price			Valuation Multiples			MKT Cap	Price Performance		Trading Indicators		ROE	ROA	52 Week (KD)		MKT Cap
	Close (KD)	Day Δ	Day % Δ	PBV(X)	PE(X)	DY%	Mn KD	MTD(%)	YTD (%)	Value (Mn KD)	(Mn Shrs)	(%)	(%)	High	Low	%
National Bank of Kuwait	0.878	-0.011	-1.24%	1.74	14.86	3.6%	5,963	1%	-14%	12.18	13.84	11.7%	1.4%	1.062	0.654	24.55%
Kuwait Finance House	0.687	-0.010	-1.43%	2.53	20.77	2.4%	5,214	4%	-7%	12.67	18.39	12.2%	1.3%	0.761	0.473	21.46%
Mobile Telecommunications	0.601	-0.013	-2.12%	2.00	11.99	5.2%	2,601	5%	1%	4.83	7.99	16.7%	4.6%	0.629	0.407	10.71%
Ahli United Bank BSC	0.243	-0.008	-3.19%	1.83	10.70	5.0%	2,345	4%	-17%	4.96	20.28	17.1%	1.8%	0.311	0.160	9.66%
Boubyan Bank	0.623	0.000	0.00%	3.28	30.11	1.0%	1,886	4%	1%	1.43	2.31	10.9%	1.2%	0.642	0.380	7.77%
Agility Public Warehousing	0.684	-0.010	-1.44%	1.19	15.09	2.7%	1,309	4%	-4%	2.52	3.69	7.9%	4.2%	0.748	0.357	5.39%
Mabane Co.	0.688	-0.012	-1.71%	1.61	13.48	1.5%	760	-5%	-19%	2.47	3.59	11.9%	5.8%	0.877	0.434	3.13%
Gulf Bank	0.233	-0.006	-2.51%	1.02	10.63	4.3%	677	6%	-23%	3.54	15.02	9.6%	1.0%	0.317	0.180	2.79%
Burgan Bank	0.215	-0.006	-2.71%	0.75	6.65	5.3%	563	6%	-29%	1.19	5.49	11.3%	1.2%	0.324	0.175	2.32%
Warba Bank	0.245	-0.004	-1.61%	1.77	23.33	0.0%	386	-2%	-6%	5.07	20.79	7.6%	0.5%	0.279	0.164	1.59%
Shamal Az-Zour Al-Oula Power & Water	0.326	-0.001	-0.31%	4.68	29.15	0.0%	359	2%	0%	0.95	2.89	16.1%	2.3%	0.500	0.297	1.48%
Human Soft Holding	2.907	0.008	0.28%	4.40	9.86	6.3%	354	12%	-3%	0.61	0.21	44.6%	30.3%	3.470	1.944	1.46%
Qurain Petrochemical Industries	0.302	-0.005	-1.63%	0.73	10.93	5.1%	308	10%	-3%	0.35	1.16	6.7%	3.6%	0.323	0.163	1.27%
Boubyan Petrochemical	0.565	-0.015	-2.59%	1.28	24.10	9.1%	285	3%	-15%	0.07	0.12	5.3%	2.1%	0.768	0.395	1.17%
Kuwait Projects Company Holding	0.160	-0.002	-1.23%	0.86	9.66	5.8%	290	7%	-25%	0.17	1.04	8.9%	0.3%	0.225	0.147	1.19%
National Industries Group Holding	0.198	-0.001	-0.50%	0.75	6.10	5.4%	283	20%	-17%	1.52	7.62	12.3%	3.7%	0.247	0.121	1.16%
Boursa Kuwait Securities Co	1.107	0.016	1.47%	6.92	23.17	0.0%	222	-3%	0%	0.31	0.28	29.9%	26.5%	1.210	0.990	0.92%
Kuwait International Bank	0.212	-0.003	-1.40%	0.77	12.61	4.7%	216	14%	-19%	2.15	10.16	6.1%	0.6%	0.270	0.162	0.89%
Mezzan Holding	0.616	0.001	0.16%	1.78	33.29	2.7%	188	-1%	23%	0.10	0.16	5.3%	2.2%	0.665	0.428	0.77%
Integrated Holding	0.370	-0.008	-2.12%	1.19	10.31	10.8%	81	3%	-33%	0.14	0.36	11.5%	8.5%	0.600	0.342	0.34%
Total		-96.01	-1.52%	1.75	14.60	3.44%	24,290	3.3%	-10.8%	57.22	135.39	12.01%	1.56%			100%

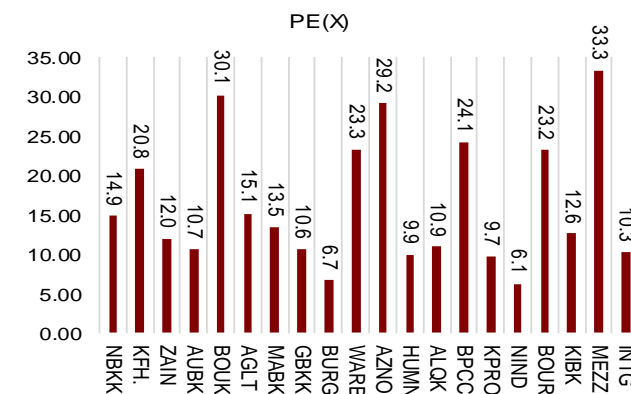
Market Capitalization



Price to Book Value

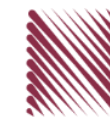


Price to Earning Value

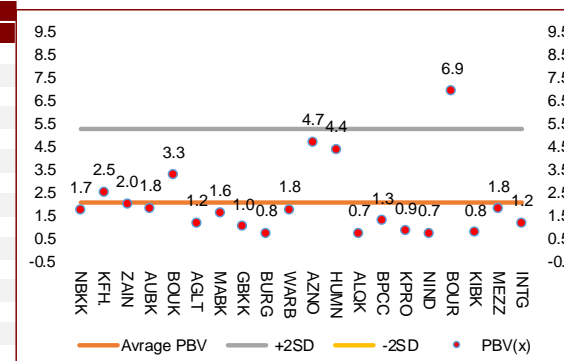


DAILY MARKET COVERAGE REPORT

NIC MENA SECURITIES - RESEARCH AND STUDIES DEP



Premier Market Company	Price			Valuation Multiples			MKT Cap Mn KD	Price Performance		ROE (%)	ROA (%)
	Close (KD)	Day Δ	Day % Δ	PBV(X)	PE(X)	DY%		MTD(%)	YTD (%)		
National Bank of Kuwait	0.878	-0.011	-1.24%	1.74	14.9	3.6%	5,963	1.0%	-13.7%	11.7%	1.4%
Kuwait Finance House	0.687	-0.010	-1.43%	2.53	20.8	2.4%	5,214	3.9%	-6.8%	12.2%	1.3%
Mobile Telecommunications	0.601	-0.013	-2.12%	2.00	12.0	5.2%	2,601	5.1%	0.5%	16.7%	4.6%
Ahli United Bank BSC	0.243	-0.008	-3.19%	1.83	10.7	5.0%	2,345	3.8%	-17.2%	17.1%	1.8%
Boubyan Bank	0.623	0.000	0.00%	3.28	30.1	1.0%	1,886	4.0%	1.4%	10.9%	1.2%
Agility Public Warehousing	0.684	-0.010	-1.44%	1.19	15.1	2.7%	1,309	3.8%	-4.1%	7.9%	4.2%
Mabane Co.	0.688	-0.012	-1.71%	1.61	13.5	1.5%	760	-5.5%	-19.2%	11.9%	5.8%
Gulf Bank	0.233	-0.006	-2.51%	1.02	10.6	4.3%	677	5.9%	-23.1%	9.6%	1.0%
Burgan Bank	0.215	-0.006	-2.71%	0.75	6.7	5.3%	563	6.4%	-29.3%	11.3%	1.2%
Warba Bank	0.245	-0.004	-1.61%	1.77	23.3	0.0%	386	-1.6%	-6.5%	7.6%	0.5%
Shamal Az-Zour Al-Oula Power & Water	0.326	-0.001	-0.31%	4.68	29.2	0.0%	359	1.9%	0.0%	16.1%	2.3%
Human Soft Holding	2.907	0.008	0.28%	4.40	9.9	6.3%	354	11.8%	-3.5%	44.6%	30.3%
Qurain Petrochemical Industries	0.302	-0.005	-1.63%	0.73	10.9	5.1%	308	10.2%	-2.6%	6.7%	3.6%
Boubyan Petrochemical	0.565	-0.015	-2.59%	1.28	24.1	9.1%	285	2.9%	-15.3%	5.3%	2.1%
Kuwait Projects Company Holding	0.160	-0.002	-1.23%	0.86	9.7	5.8%	290	6.6%	-25.5%	8.9%	0.3%
National Industries Group Holding	0.198	-0.001	-0.50%	0.75	6.1	5.4%	283	19.9%	-17.4%	12.3%	3.7%
Boursa Kuwait Securities Co	1.107	0.016	1.47%	6.92	23.2	0.0%	222	-3.4%	0.0%	29.9%	26.5%
Kuwait International Bank	0.212	-0.003	-1.40%	0.77	12.6	4.7%	216	14.0%	-18.8%	6.1%	0.6%
Mezzan Holding	0.616	0.001	0.16%	1.78	33.3	2.7%	188	-1.1%	23.2%	5.3%	2.2%
Integrated Holding	0.370	-0.008	-2.12%	1.19	10.3	10.8%	81	3.1%	-32.8%	11.5%	8.5%
Total		-96.01	-1.52%	1.75	14.60	3.44%	24,290	3.3%	-10.8%	12.01%	1.56%



Premier Market Discription	Price			Moving Average			RSI	MKT Cap Mn KD	Price Performance		52 Week (KD)	
	Close (KD)	Day Δ	Day % Δ	50 Day	200 Day	14 Day			MTD(%)	YTD (%)	High	Low
Premier Index	6,219	-96.01	-1.52%	5,957	5,856	56	24,290	3.3%	-10.8%	7,172	4,499	

Top 5 Performrs (Today's Price Change)

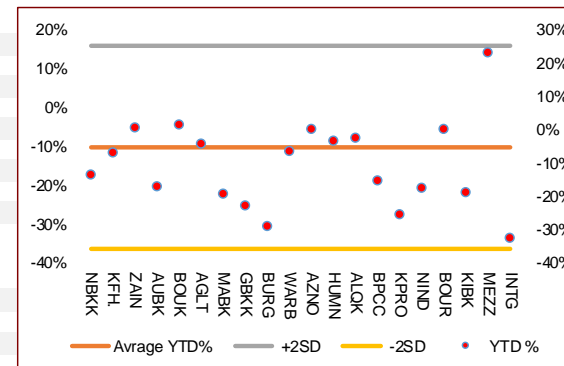
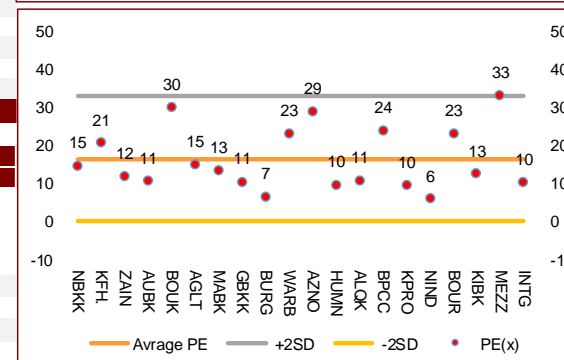
Boursa Kuwait Securities Co	1.107	0.016	1.47%	0.537	0.134	30	222	-3.4%	0.0%	1.210	0.990
Human Soft Holding	2.907	0.008	0.28%	2.672	2.778	75	354	11.8%	-3.5%	3.470	1.944
Mezzan Holding	0.616	0.001	0.16%	0.628	0.562	44	188	-1.1%	23.2%	0.665	0.428
Boubyan Bank	0.623	0.000	0.00%	0.588	0.547	67	1,886	4.0%	1.4%	0.642	0.380
Shamal Az-Zour Al-Oula Power & Water	0.326	-0.001	-0.31%	0.290	0.073	39	359	1.9%	0.0%	0.500	0.297

Middel Performrs (Today's Price Change)

National Industries Group Holding	0.198	-0.001	-0.50%	0.170	0.182	71	283	19.9%	-17.4%	0.247	0.121
Kuwait Projects Company Holding	0.160	-0.002	-1.23%	0.154	0.174	60	290	6.6%	-25.5%	0.225	0.147
National Bank of Kuwait	0.878	-0.011	-1.24%	0.863	0.843	44	5,963	1.0%	-13.7%	1.062	0.654
Kuwait International Bank	0.212	-0.003	-1.40%	0.186	0.201	66	216	14.0%	-18.8%	0.270	0.162
Kuwait Finance House	0.687	-0.010	-1.43%	0.649	0.638	51	5,214	3.9%	-6.8%	0.761	0.473
Agility Public Warehousing	0.684	-0.010	-1.44%	0.651	0.614	56	1,309	3.8%	-4.1%	0.748	0.357
Warba Bank	0.245	-0.004	-1.61%	0.227	0.220	45	386	-1.6%	-6.5%	0.279	0.164
Qurain Petrochemical Industries	0.302	-0.005	-1.63%	0.286	0.266	66	308	10.2%	-2.6%	0.323	0.163
Mabane Co.	0.688	-0.012	-1.71%	0.685	0.680	25	760	-5.5%	-19.2%	0.877	0.434
Mobile Telecommunications	0.601	-0.013	-2.12%	0.100	0.100	60	2,601	5.1%	0.5%	1.210	0.996

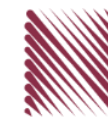
Bottom 5 Performrs (Today's Price Change)

Ahli United Bank BSC	0.243	-0.008	-3.19%	0.230	0.226	50	2,345	3.8%	-17.2%	0.311	0.160
Burgan Bank	0.215	-0.006	-2.71%	0.204	0.224	55	563	6.4%	-29.3%	0.324	0.175
Boubyan Petrochemical	0.565	-0.015	-2.59%	0.553	0.567	51	285	2.9%	-15.3%	0.768	0.395
Gulf Bank	0.233	-0.006	-2.51%	0.220	0.234	57	677	5.9%	-23.1%	0.317	0.180
Integrated Holding	0.370	-0.008	-2.12%	0.371	0.439	42	81	3.1%	-32.8%	0.600	0.342



DAILY MARKET COVERAGE REPORT

NIC MENA SECURITIES - RESEARCH AND STUDIES DEP



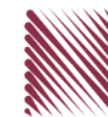
Banking Sector	Price			Valuation Multiples			MKT Cap	Price Performance		Trading Indicators		ROE	ROA	52 Week (KD)		MKT Cap
	Company	Close (KD)	Day Δ	Day % Δ	PBV(X)	PE(X)		DY%	Mn KD	MTD(%)	YTD (%)			Value (Mn KD)	(Mn Shrs)	
National Bank of Kuwait	0.878	-0.011	-1.24%	1.74	14.86	3.6%	5,963	1%	-14%	12.18	13.84	11.7%	1.4%	1.062	0.654	18.34%
Kuwait Finance House	0.687	-0.010	-1.43%	2.53	20.77	2.4%	5,214	4%	-7%	12.67	18.39	12.2%	1.3%	0.761	0.473	16.04%
Ahli United Bank BSC	0.243	-0.008	-3.19%	1.83	10.70	5.0%	2,345	4%	-17%	4.96	20.28	17.1%	1.8%	0.311	0.160	7.22%
Boubyan Bank	0.623	0.000	0.00%	3.28	30.11	1.0%	1,886	4%	1%	1.43	2.31	10.9%	1.2%	0.642	0.380	5.80%
Commercial Bank of Kuwait	0.500	0.000	0.00%	1.32	0.00	3.7%	965	0%	-5%	0.00	0.00	0.0%	0.0%	0.555	0.465	2.97%
Gulf Bank	0.233	-0.006	-2.51%	1.02	10.63	4.3%	677	6%	-23%	3.54	15.02	9.6%	1.0%	0.317	0.180	2.08%
Burgan Bank	0.215	-0.006	-2.71%	0.75	6.65	5.3%	563	6%	-29%	1.19	5.49	11.3%	1.2%	0.324	0.175	1.73%
Ahli United Bank	0.284	-0.004	-1.39%	1.22	10.07	4.8%	554	4%	-14%	0.22	0.80	12.1%	1.3%	0.330	0.225	1.70%
Warba Bank	0.245	-0.004	-1.61%	1.77	23.33	0.0%	386	-2%	-6%	5.07	20.79	7.6%	0.5%	0.279	0.164	1.19%
Al Ahli Bank of Kuwait	0.203	-0.004	-1.93%	0.58	11.37	6.9%	326	9%	-21%	0.33	1.64	5.1%	0.6%	0.302	0.156	1.00%
Kuwait International Bank	0.212	-0.003	-1.40%	0.77	12.61	4.7%	216	14%	-19%	2.15	10.16	6.1%	0.6%	0.270	0.162	0.66%
Total Banking Sector - 11 Companies				1.73	15.92	3.3%	19,095			43.75	108.72	10.90%	1.21%			58.74%

Basic materials	Price			Valuation Multiples			MKT Cap	Price Performance		Trading Indicators		ROE	ROA	52 Week (KD)		MKT Cap
	Company	Close (KD)	Day Δ	Day % Δ	PBV(X)	PE(X)		DY%	Mn KD	MTD(%)	YTD (%)			Value (Mn KD)	(Mn Shrs)	
Qurain Petrochemical Industries	0.302	-0.005	-1.63%	0.73	10.93	5.1%	308	10%	-3%	0.35	1.16	6.7%	3.6%	0.323	0.163	0.95%
Boubyan Petrochemical	0.565	-0.015	-2.59%	1.28	24.10	9.1%	285	3%	-15%	0.07	0.12	5.3%	2.1%	0.768	0.395	0.88%
Al Kout Industrial Projects	0.731	0.000	0.00%	2.38	15.41	6.8%	74	-5%	-14%	0.00	0.00	15.4%	11.3%	0.850	0.731	0.23%
Kuwait Foundry	0.259	-0.001	-0.38%	0.87	20.93	20.6%	19	0%	-23%	0.00	0.01	4.1%	3.8%	0.419	0.192	0.06%
Total Basic materials - 4 Companies				0.98	15.00	7.4%	686			0.42	1.29	6.57%	5.07%			2.11%

Consumer goods	Price			Valuation Multiples			MKT Cap	Price Performance		Trading Indicators		ROE	ROA	52 Week (KD)		MKT Cap
	Company	Close (KD)	Day Δ	Day % Δ	PBV(X)	PE(X)		DY%	Mn KD	MTD(%)	YTD (%)			Value (Mn KD)	(Mn Shrs)	
Mezzan Holding	0.616	0.001	0.16%	1.78	33.29	2.7%	188	-1%	23%	0.10	0.16	5.3%	2.2%	0.665	0.428	0.58%
Livestock Transport and Trading	0.189	-0.001	-0.53%	0.98	33.69	0.1%	40	3%	8%	0.01	0.07	2.9%	2.0%	0.200	0.152	0.12%
Danah Al Safat Foodstuff	0.012	0.000	0.00%	0.25	(0.30)	0.1%	1	0%	-25%	0.00	0.00	-84.8%	-43.2%	0.019	0.010	0.00%
Total Basic materials - 3 Companies				1.51	92.54	2.2%	228			0.11	0.23	1.64%	0.90%			0.70%

DAILY MARKET COVERAGE REPORT

NIC MENA SECURITIES - RESEARCH AND STUDIES DEP

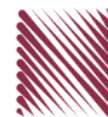


Consumer services																
Company	Price			Valuation Multiples			MKT Cap	Price Performance		Trading Indicators		ROE	ROA	52 Week (KD)		MKT Cap
	Close (KD)	Day Δ	Day % Δ	PBV(X)	PE(X)	DY%	Mn KD	MTD(%)	YTD (%)	Value (Mn KD)	(Mn Shrs)	(%)	(%)	High	Low	%
Jazeera Airways	0.565	-0.009	-1.57%	2.81	7.56	6.2%	113	-3%	-48%	0.23	0.40	37.1%	9.0%	1.110	0.372	0.35%
Kuwait National Cinema	0.700	0.000	0.00%	0.80	7.57	6.9%	65	0%	-33%	0.02	0.02	10.6%	7.2%	1.050	0.600	0.20%
Oula Fuel Marketing	0.118	0.001	0.85%	0.71	12.35	5.0%	48	6%	-7%	0.07	0.59	5.7%	3.2%	0.134	0.095	0.15%
Al Soor Fuel Marketing	0.116	-0.004	-3.33%	0.71	13.58	4.3%	47	5%	-7%	0.01	0.12	5.3%	3.7%	0.129	0.096	0.14%
Sultan Center Food Products	0.048	-0.002	-3.59%	0.60	12.15	0.0%	27	-9%	-7%	0.02	0.42	4.9%	0.7%	0.060	0.037	0.08%
Jiyad Holding	0.051	0.000	0.39%	0.46	10.17	0.0%	18	27%	31%	0.06	1.18	4.5%	2.8%	0.054	0.029	0.05%
IFA Hotels and Resorts	0.023	0.000	-1.32%	0.81	(0.62)	0.0%	14	-3%	-59%	0.02	0.87	-131.5%	-8.1%	0.062	0.021	0.04%
Kuwait Resorts	0.055	0.000	-0.72%	0.38	10.06	0.0%	11	7%	-4%	0.03	0.60	3.8%	3.2%	0.060	0.038	0.03%
Alrai Media Group	0.083	0.000	0.00%	0.82	(2.39)	0.0%	8	0%	-2%	0.00	0.00	-34.2%	-20.0%	0.093	0.069	0.03%
Future Kid Entertainment and Real Estate	0.080	0.008	10.80%	0.46	30.22	14.4%	9	0%	-9%	0.00	0.05	1.5%	0.9%	0.110	0.069	0.03%
Al Eid Food	0.059	0.000	0.00%	0.40	4.71	0.0%	7	3%	-10%	0.00	0.00	8.4%	6.1%	0.080	0.041	0.02%
Kuwait Hotels	0.086	-0.005	-4.98%	1.21	(4.96)	0.0%	5	-19%	-14%	0.00	0.00	-24.4%	-13.2%	0.111	0.069	0.01%
Palms Agro Production	0.080	0.000	0.00%	0.67	(56.04)	12.5%	4	22%	98%	0.00	0.00	-1.2%	-0.9%	0.080	0.025	0.01%
Kuwait Cable Vision	0.014	0.000	0.00%	0.52	(11.65)	0.0%	1	0%	0%	0.00	0.00	-4.5%	-3.0%	0.026	0.012	0.00%
Total Consumer services - 14 Companies				0.85	35.70	4.7%	376			0.46	4.23	2.38%	2.72%			1.16%

Financial services																
Company	Price			Valuation Multiples			MKT Cap	Price Performance		Trading Indicators		ROE	ROA	52 Week (KD)		MKT Cap
	Close (KD)	Day Δ	Day % Δ	PBV(X)	PE(X)	DY%	Mn KD	MTD(%)	YTD (%)	Value (Mn KD)	(Mn Shrs)	(%)	(%)	High	Low	%
Egypt Kuwait Holding	0.380	0.000	0.00%	2.25	12.83	5.2%	389	4%	-16%	0.00	0.00	17.6%	7.1%	0.494	0.318	1.20%
Kuwait Projects Company Holding	0.160	-0.002	-1.23%	0.86	9.66	5.8%	290	7%	-25%	0.17	1.04	8.9%	0.3%	0.225	0.147	0.89%
National Industries Group Holding	0.198	-0.001	-0.50%	0.75	6.10	5.4%	283	20%	-17%	1.52	7.62	12.3%	3.7%	0.247	0.121	0.87%
Boursa Kuwait Securities Co	1.107	0.016	1.47%	6.92	23.17	0.0%	222	-3%	0%	0.31	0.28	29.9%	26.5%	1.210	0.990	0.68%
GFH Financial Group	0.046	-0.001	-1.71%	0.50	6.27	6.2%	156	-6%	-33%	0.02	0.38	8.0%	1.3%	0.074	0.042	0.48%
National Investments	0.139	-0.002	-1.42%	0.61	10.34	5.8%	111	5%	1%	0.40	2.92	5.9%	5.0%	0.158	0.080	0.34%
Tamdeen Investment	0.316	0.000	0.00%	0.39	13.11	3.8%	108	4%	-8%	0.00	0.00	3.0%	2.2%	0.400	0.199	0.33%
Alimtiq Investment Group	0.100	-0.001	-0.69%	0.48	5.23	7.9%	103	9%	-20%	0.49	4.93	9.1%	5.2%	0.137	0.071	0.32%
Commercial Facilities	0.181	0.000	0.00%	0.56	6.97	9.3%	92	-1%	-17%	0.01	0.04	8.0%	4.2%	0.235	0.179	0.28%
Aayan Leasing and Investment	0.088	-0.001	-1.45%	1.03	(4.83)	2.0%	71	2%	89%	0.69	7.85	-21.4%	-4.9%	0.102	0.032	0.22%
Kuwait Investment	0.143	0.001	0.70%	0.62	4.48	7.0%	78	12%	-5%	0.02	0.14	13.9%	6.0%	0.172	0.095	0.24%
Noor Financial Investment	0.175	0.003	1.74%	1.07	8.56	2.8%	69	11%	47%	0.26	1.50	12.5%	7.5%	0.184	0.076	0.21%

DAILY MARKET COVERAGE REPORT

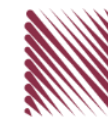
NIC MENA SECURITIES - RESEARCH AND STUDIES DEP



Financial services Company	Price			Valuation Multiples			MKT Cap	Price Performance		Trading Indicators		ROE	ROA	52 Week (KD)		MKT Cap
	Close (KD)	Day Δ	Day % Δ	PBV(X)	PE(X)	DY%	Mn KD	MTD(%)	YTD (%)	Value (Mn KD)	(Mn Shrs)	(%)	(%)	High	Low	%
Arzan Financial Group for Financing and Invest	0.059	-0.001	-1.00%	0.48	43.11	0.0%	47	6%	150%	0.51	8.58	1.1%	0.7%	0.064	0.022	0.15%
Kuwait Financial Centre	0.083	-0.004	-4.48%	0.42	5.71	5.9%	40	-1%	-22%	0.01	0.11	7.3%	3.5%	0.121	0.070	0.12%
Gulf Investment House	0.094	-0.001	-0.53%	1.06	173.87	0.0%	38	0%	46%	0.14	1.56	0.6%	0.5%	0.108	0.038	0.12%
Al Bareeq Holding	0.083	0.000	0.00%	0.87	16.62	0.0%	36	5%	-17%	0.00	0.00	5.2%	5.0%	0.110	0.072	0.11%
Arabi Group Holdings	0.198	0.000	0.00%	1.07	(19.90)	0.0%	33	0%	-28%	0.00	0.00	-5.4%	-0.6%	0.337	0.160	0.10%
Kuwait and Middle East Financial Investment	0.117	0.001	0.86%	1.90	46.73	0.0%	31	6%	31%	0.00	0.00	4.1%	3.2%	0.138	0.063	0.09%
Privatization Holding	0.045	0.000	-0.66%	0.33	(40.48)	0.0%	27	7%	-9%	0.01	0.25	-0.8%	-0.5%	0.059	0.037	0.08%
Asiya Capital Investments	0.034	0.001	3.99%	0.36	17.47	0.2%	26	6%	-17%	0.01	0.16	2.1%	2.0%	0.041	0.029	0.08%
Umm Al Qaiwain General Investment Co	0.072	0.002	2.71%	0.48	13.53	5.1%	26	0%	8%	0.01	0.21	3.6%	3.3%	0.096	0.052	0.08%
Securities House	0.044	-0.001	-1.79%	0.60	(64.33)	0.0%	24	2%	-3%	0.06	1.41	-0.9%	-0.7%	0.050	0.027	0.08%
KAMCO Investment	0.076	0.000	0.00%	0.46	8.58	0.0%	26	6%	-16%	0.01	0.19	5.4%	2.3%	0.111	0.060	0.08%
First Investment	0.035	0.000	-1.12%	0.55	(0.48)	0.0%	23	12%	3%	0.04	1.16	-113.6%	-62.0%	0.045	0.022	0.07%
Inovest BSC Public	0.078	-0.003	-3.34%	0.54	10.48	7.6%	23	3%	21%	0.20	2.55	5.2%	2.9%	0.081	0.044	0.07%
Coast Investment and Development	0.039	0.000	-0.26%	0.41	38.37	0.0%	23	8%	-4%	0.03	0.68	1.1%	1.0%	0.045	0.026	0.07%
Al Madar Finance and Investment	0.087	0.003	2.98%	0.78	12.92	0.0%	18	5%	-7%	0.27	3.12	6.1%	5.0%	0.143	0.062	0.06%
Bayan Investment	0.042	0.000	0.00%	0.42	(21.81)	0.0%	15	-10%	11%	0.00	0.00	-1.9%	-0.8%	0.053	0.031	0.05%
Al Manar Financing and Leasing	0.049	0.000	0.00%	0.45	12.63	1.0%	15	11%	-5%	0.00	0.00	3.5%	2.7%	0.060	0.037	0.05%
Manazel Holding	0.034	0.000	-1.16%	0.75	21.92	0.0%	15	7%	-13%	0.04	1.09	3.4%	0.8%	0.048	0.021	0.05%
Kuwait Finance and Investment	0.049	0.000	0.41%	0.38	21.82	0.0%	15	7%	-6%	0.00	0.02	1.8%	1.2%	0.058	0.038	0.05%
National International Holding	0.063	0.000	-0.16%	0.33	7.55	4.7%	13	5%	-14%	0.00	0.02	4.4%	3.3%	0.081	0.052	0.04%
Osoul Investment	0.078	-0.004	-4.65%	0.59	6.55	0.0%	12	-2%	4%	0.00	0.01	9.0%	8.2%	0.121	0.070	0.04%
UniCap Investment and Finance	0.045	0.001	1.58%	0.46	(22.53)	0.0%	11	6%	-18%	0.00	0.00	-2.0%	-1.0%	0.057	0.035	0.03%
Amar Finance and Leasing	0.055	0.000	0.00%	0.62	46.05	0.0%	11	-2%	45%	0.00	0.00	1.3%	1.2%	0.064	0.037	0.03%
Gulf North Africa Holding	0.059	0.000	0.00%	0.78	76.01	0.0%	9	1%	-5%	0.00	0.00	1.0%	0.6%	0.062	0.052	0.03%
Al Salam Group Holding	0.028	-0.002	-6.02%	0.24	212.14	0.0%	8	9%	-4%	0.27	9.28	0.1%	0.1%	0.033	0.018	0.02%
International Financial Advisors	0.059	0.000	-0.17%	1.78	(0.80)	1.1%	15	90%	9%	0.11	1.96	-222.8%	-19.3%	0.064	0.027	0.05%
Amwal International Investment	0.036	0.000	0.00%	0.66	13.12	0.0%	6	0%	18%	0.00	0.00	5.0%	2.6%	0.043	0.030	0.02%
Al Madina for Finance and Investment	0.017	0.000	-2.37%	0.56	(3.10)	0.0%	7	34%	10%	0.55	32.99	-17.9%	-7.7%	0.019	0.009	0.02%
Credit Rating and Collection	0.032	0.000	0.00%	0.97	(21.20)	0.0%	5	0%	58%	0.00	0.00	-4.6%	-4.3%	0.035	0.019	0.02%
Ektitab Holding	0.016	0.000	-1.27%	0.37	(10.91)	0.0%	5	1%	3%	0.02	1.07	-3.4%	-3.0%	0.017	0.010	0.02%
Kuwait Syrian Holding Co	0.029	-0.002	-7.05%	0.25	(14.82)	0.0%	5	7%	-8%	0.00	0.05	-1.7%	-1.1%	0.043	0.022	0.02%
Warba Capital Holding	0.047	0.000	0.21%	0.52	(7.47)	0.0%	5	1%	-27%	0.02	0.47	-7.0%	-6.2%	0.070	0.042	0.01%
National Consumer Holding	0.045	-0.002	-4.66%	0.50	221.38	0.0%	4	-6%	-18%	0.00	0.02	0.2%	0.2%	0.100	0.010	0.01%
Al Deera Holding	0.016	0.000	0.00%	0.70	(9.02)	0.0%	3	0%	-20%	0.00	0.00	-7.7%	-1.7%	0.022	0.011	0.01%
Al Mal Investment Company	0.009	0.000	1.11%	0.40	(0.85)	0.0%	3	2%	-8%	0.01	1.55	-47.6%	-23.3%	0.016	0.008	0.01%
Gulf Franchising Holding	0.050	0.000	0.00%	0.78	(2.16)	0.0%	2	4%	-34%	0.00	0.00	-36.2%	-10.8%	0.148	0.016	0.01%
Tamkeen Holding	0.005	0.000	0.00%	0.05	(7.18)	0.0%	0	0%	0%	0.00	0.00	-0.7%	-0.7%	0.005	0.005	0.00%
Total Financial services - 49 Companies				0.74	16.81	4.0%	2,597			6.21	95.21	4.42%	4.14%			7.99%

DAILY MARKET COVERAGE REPORT

NIC MENA SECURITIES - RESEARCH AND STUDIES DEP

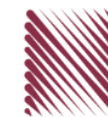


Health care	Price			Valuation Multiples			MKT Cap	Price Performance		Trading Indicators		ROE	ROA	52 Week (KD)		MKT Cap
Company	Close (KD)	Day Δ	Day % Δ	PBV(X)	PE(X)	DY%	Mn KD	MTD(%)	YTD (%)	Value (Mn KD)	(Mn Shrs)	(%)	(%)	High	Low	%
Al-Maidan Clinic for Oral Health Services	1.220	0.000	0.00%	7.90	47.78	0.6%	305	0%	0%	0.00	0.00	16.5%	10.9%	1.240	1.220	0.94%
Advanced Technology	0.600	0.000	0.00%	1.56	48.85	2.5%	90	1%	-26%	0.00	0.00	3.2%	0.7%	0.900	0.580	0.28%
Yiaco Medical	0.707	0.000	0.00%	6.06	52.72	0.0%	12	0%	0%	0.00	0.00	11.5%	0.6%	0.707	0.707	0.04%
Total Health care - 3 Companies				4.15	48.14	1.0%	407			0.00	0.00	8.61%	4.68%			1.25%

Industrials	Price			Valuation Multiples			MKT Cap	Price Performance		Trading Indicators		ROE	ROA	52 Week (KD)		MKT Cap
Company	Close (KD)	Day Δ	Day % Δ	PBV(X)	PE(X)	DY%	Mn KD	MTD(%)	YTD (%)	Value (Mn KD)	(Mn Shrs)	(%)	(%)	High	Low	%
Agility Public Warehousing	0.684	-0.010	-1.44%	1.19	15.09	2.7%	1,309	4%	-4%	2.52	3.69	7.9%	4.2%	0.748	0.357	4.03%
Human Soft Holding	2.907	0.008	0.28%	4.40	9.86	6.3%	354	12%	-3%	0.61	0.21	44.6%	30.3%	3.470	1.944	1.09%
ALAFCO Aviation Lease and Finance	0.164	-0.001	-0.61%	0.49	8.82	6.1%	156	4%	-40%	0.21	1.31	5.5%	1.4%	0.278	0.138	0.48%
Kuwait Cement	0.217	-0.008	-3.56%	0.74	38.51	6.8%	155	12%	-12%	0.28	1.31	1.9%	1.3%	0.265	0.144	0.48%
Gulf Cable and Electrical Industries	0.688	-0.016	-2.27%	0.83	34.12	4.0%	144	1%	41%	0.55	0.80	2.4%	2.2%	0.742	0.390	0.44%
Integrated Holding	0.370	-0.008	-2.12%	1.19	10.31	10.8%	81	3%	-33%	0.14	0.36	11.5%	8.5%	0.600	0.342	0.25%
Kuwait Portland Cement	0.788	-0.001	-0.13%	1.06	10.41	12.5%	79	5%	-20%	0.06	0.08	10.2%	8.2%	1.133	0.683	0.24%
Educational Holding Group	0.307	0.000	0.00%	1.78	9.72	4.9%	75	-1%	-30%	0.00	0.00	18.3%	16.7%	0.475	0.228	0.23%
United Projects for Aviation Services	0.390	-0.075	-16.13%	0.82	6.67	5.4%	62	-22%	-29%	0.01	0.02	12.3%	7.8%	0.512	0.361	0.19%
Heavy Engineering Industries and Shipbuilding	0.375	-0.001	-0.27%	1.08	6.02	7.8%	68	3%	-7%	0.08	0.21	18.0%	5.9%	0.419	0.298	0.21%
National Industries	0.155	0.000	0.00%	0.64	12.63	6.4%	54	0%	-6%	0.00	0.02	5.1%	3.8%	0.173	0.143	0.17%
ACICO Industries	0.105	0.000	0.00%	0.34	13.67	4.7%	35	1%	-23%	0.03	0.30	2.5%	0.6%	0.137	0.081	0.11%
Kuwait Company for Process Plant Constructi	0.322	-0.002	-0.62%	1.27	6.90	5.6%	34	6%	34%	0.01	0.03	18.5%	7.7%	0.337	0.175	0.11%
Ras Al Khaimah for White Cement and Constr	0.065	0.000	0.00%	0.51	19.94	8.4%	33	0%	0%	0.00	0.00	2.6%	2.0%	0.080	0.060	0.10%
Combined Group Contracting	0.183	0.000	0.00%	0.64	8.24	11.2%	30	6%	-27%	0.20	1.10	7.7%	1.2%	0.251	0.138	0.09%
Gulf Cement	0.035	0.000	0.29%	0.34	(12.58)	12.0%	28	5%	-37%	0.00	0.00	-2.7%	-2.2%	0.059	0.029	0.09%
Sharjah Cement and Industrial Development	0.042	0.000	0.00%	0.21	25.32	12.4%	26	0%	0%	0.00	0.00	0.8%	0.6%	0.060	0.042	0.08%
KGL Logistics	0.030	0.000	-0.33%	0.22	4.86	0.1%	23	11%	-20%	0.03	0.98	4.6%	2.9%	0.043	0.023	0.07%
Kuwait and Gulf Link Transport	0.051	-0.002	-3.23%	0.21	15.42	0.0%	14	9%	-23%	0.01	0.21	1.4%	0.4%	0.077	0.042	0.04%
Shuaiba Industrial	0.140	0.000	0.00%	0.78	43.23	7.1%	14	8%	-10%	0.00	0.00	1.8%	1.4%	0.180	0.122	0.04%
National Cleaning	0.057	0.000	-0.18%	0.34	7.59	8.9%	12	-1%	-18%	0.01	0.17	4.4%	1.5%	0.088	0.047	0.04%
Fujairah Cement Industries	0.037	0.000	0.00%	0.15	17.94	11.4%	13	9%	-18%	0.00	0.00	0.8%	0.4%	0.051	0.029	0.04%
Hilal Cement	0.114	0.000	0.00%	0.99	(9.37)	13.2%	12	0%	14%	0.00	0.00	-10.6%	-6.2%	0.126	0.063	0.04%
Mubarrad Holding	0.061	-0.001	-2.08%	0.48	9.87	7.7%	10	1%	-30%	0.03	0.56	4.9%	4.1%	0.089	0.049	0.03%
Specialities Group Holding	0.065	0.000	0.00%	0.35	7.72	0.0%	10	5%	-15%	0.00	0.02	4.5%	3.5%	0.078	0.050	0.03%
National Ranges	0.015	-0.001	-6.25%	0.27	(1.10)	0.0%	4	7%	50%	0.04	2.42	-24.9%	-5.3%	0.018	0.007	0.01%
Salbookh Trading	0.035	0.000	-0.28%	0.48	(2.07)	0.0%	4	-2%	-29%	0.01	0.42	-23.2%	-15.9%	0.051	0.026	0.01%
Metal and Recycling	0.037	0.000	0.54%	0.31	(1.57)	0.0%	3	-5%	-26%	0.00	0.01	-19.7%	-10.1%	0.070	0.020	0.01%
Equipment Holding	0.016	-0.001	-3.70%	0.31	(180.14)	0.0%	2	-2%	-29%	0.00	0.05	-0.2%	-0.1%	0.024	0.013	0.01%
Total Industrials - 29 Companies				0.90	13.55	4.9%	2,844			4.84	14.29	6.67%	5.05%			8.75%

DAILY MARKET COVERAGE REPORT

NIC MENA SECURITIES - RESEARCH AND STUDIES DEP



Insurance	Price			Valuation Multiples			MKT Cap	Price Performance		Trading Indicators		ROE	ROA	52 Week (KD)		MKT Cap
Company	Close (KD)	Day Δ	Day % Δ	PBV(X)	PE(X)	DY%	Mn KD	MTD(%)	YTD (%)	Value (Mn KD)	(Mn Shrs)	(%)	(%)	High	Low	%
Gulf Insurance Group	0.572	-0.008	-1.38%	0.98	7.98	6.5%	107	-20%	-13%	0.01	0.02	12.3%	1.7%	0.720	0.550	0.33%
Al Ahleia Insurance	0.415	0.010	2.47%	0.78	8.36	8.1%	86	4%	2%	0.04	0.09	9.4%	3.3%	0.445	0.367	0.26%
Kuwait Insurance	0.361	-0.018	-4.75%	0.59	6.99	6.6%	67	0%	9%	0.00	0.00	8.5%	4.6%	0.387	0.300	0.21%
Kuwait Reinsurance	0.225	0.000	0.00%	0.85	9.63	1.9%	46	2%	63%	0.00	0.00	8.9%	3.2%	0.225	0.126	0.14%
Bahrain Kuwait Insurance	0.200	0.000	0.00%	0.93	12.86	6.1%	28	0%	0%	0.00	0.00	7.2%	1.1%	0.200	0.200	0.09%
Warba Insurance	0.078	0.001	1.03%	0.34	11.12	0.0%	13	7%	29%	0.01	0.07	3.1%	1.0%	0.094	0.051	0.04%
First Takaful Insurance	0.040	0.000	0.00%	0.48	5.02	0.0%	4	7%	4%	0.00	0.00	9.6%	5.9%	0.056	0.031	0.01%
Wethaq Takaful Insurance	0.021	0.000	-0.47%	0.19	(26.96)	0.0%	2	-10%	-15%	0.01	0.33	-0.7%	-0.7%	0.035	0.018	0.01%
Total Insurance - 8 Companies				0.74	8.39	5.9%	352			0.06	0.51	8.86%	3.00%			1.08%

Oil and Gas	Price			Valuation Multiples			MKT Cap	Price Performance		Trading Indicators		ROE	ROA	52 Week (KD)		MKT Cap
Company	Close (KD)	Day Δ	Day % Δ	PBV(X)	PE(X)	DY%	Mn KD	MTD(%)	YTD (%)	Value (Mn KD)	(Mn Shrs)	(%)	(%)	High	Low	%
National Petroleum Services	1.150	0.000	0.00%	2.74	9.81	6.1%	112	5%	-2%	0.00	0.00	27.9%	23.6%	1.389	0.903	0.34%
Independent Petroleum Group	0.430	0.000	0.00%	0.79	11.72	7.0%	78	0%	-11%	0.00	0.00	6.8%	2.2%	0.497	0.375	0.24%
Burgan for Well Drilling Trading and Maintenanc	0.077	-0.005	-6.10%	0.28	7.82	0.0%	18	-1%	-4%	0.00	0.01	3.6%	1.1%	0.098	0.060	0.05%
Energy House Holding	0.023	0.000	-1.72%	0.71	(3.14)	0.0%	17	16%	0%	0.01	0.47	-22.5%	-17.0%	0.036	0.014	0.05%
Gulf Petroleum Investment	0.021	-0.001	-2.38%	0.23	(6.61)	0.0%	9	11%	2%	0.19	9.16	-3.4%	-2.3%	0.023	0.012	0.03%
Senegy Holding	0.019	0.001	4.37%	0.38	(0.80)	0.0%	4	1%	-13%	0.01	0.61	-47.9%	-30.4%	0.027	0.014	0.01%
Total Oil and Gas - 6 Companies				0.85	27.55	5.1%	237			0.21	10.25	3.10%	2.18%			0.73%

Real estate	Price			Valuation Multiples			MKT Cap	Price Performance		Trading Indicators		ROE	ROA	52 Week (KD)		MKT Cap
Company	Close (KD)	Day Δ	Day % Δ	PBV(X)	PE(X)	DY%	Mn KD	MTD(%)	YTD (%)	Value (Mn KD)	(Mn Shrs)	(%)	(%)	High	Low	%
Mabane Co.	0.688	-0.012	-1.71%	1.61	13.48	1.5%	760	-5%	-19%	2.47	3.59	11.9%	5.8%	0.877	0.434	2.34%
Salhia Real Estate	0.398	-0.004	-1.00%	1.20	9.15	5.0%	197	0%	-5%	0.05	0.13	13.2%	5.8%	0.460	0.330	0.61%
Commercial Real Estate	0.109	-0.001	-0.91%	0.67	13.50	5.2%	197	8%	19%	0.01	0.12	5.0%	2.7%	0.112	0.085	0.61%
National Real Estate	0.074	-0.001	-0.94%	0.41	9.67	0.0%	111	-1%	-15%	0.15	2.08	4.2%	2.4%	0.090	0.058	0.34%
Tamdeen Real Estate	0.260	0.010	4.00%	0.38	12.68	3.9%	105	0%	-19%	0.00	0.01	3.0%	2.2%	0.343	0.241	0.32%
Kuwait Real Estate	0.104	-0.002	-1.89%	0.73	13.22	0.4%	93	10%	-2%	0.72	6.92	5.5%	2.2%	0.115	0.070	0.29%
United Real Estate	0.050	0.000	0.00%	0.29	(7.44)	0.0%	54	3%	-18%	0.01	0.13	-3.9%	-1.2%	0.063	0.045	0.17%
First Dubai for Real Estate Development	0.042	-0.002	-3.91%	0.56	45.84	0.9%	42	8%	17%	0.05	1.28	1.2%	1.0%	0.055	0.027	0.13%
Al Mazaya Holding	0.056	-0.001	-2.29%	0.44	(3.97)	0.1%	35	5%	-7%	0.18	3.32	-11.0%	-3.8%	0.067	0.047	0.11%
Ajjal Real Estate Entertainment	0.147	0.000	0.00%	0.23	14.21	0.0%	28	2%	-15%	0.00	0.00	1.6%	1.4%	0.213	0.115	0.09%
Injazzat Real Estate Development	0.077	0.000	0.00%	0.49	(3.69)	9.0%	26	-3%	-4%	0.00	0.00	-13.4%	-7.0%	0.091	0.061	0.08%

DAILY MARKET COVERAGE REPORT

NIC MENA SECURITIES - RESEARCH AND STUDIES DEP



Real estate Company	Price			Valuation Multiples			MKT Cap	Price Performance		Trading Indicators		ROE	ROA	52 Week (KD)		MKT Cap
	Close (KD)	Day Δ	Day % Δ	PBV(X)	PE(X)	DY%	Mn KD	MTD(%)	YTD (%)	Value (Mn KD)	(Mn Shrs)	(%)	(%)	High	Low	%
Munshaat Real Estate Projects	0.072	0.000	0.00%	0.49	26.53	2.9%	23	2%	-3%	0.00	0.01	1.8%	0.7%	0.090	0.045	0.07%
Aayan Real Estate	0.058	0.000	0.69%	0.34	11.43	8.2%	24	-1%	-20%	0.04	0.62	3.0%	1.9%	0.080	0.048	0.07%
Al Argan International Real Estate	0.094	0.005	5.16%	0.27	30.37	5.2%	24	1%	-11%	0.00	0.00	0.9%	0.3%	0.135	0.060	0.07%
Al-Enmaa Real Estate	0.051	-0.001	-1.92%	0.51	13.48	0.0%	23	9%	-18%	0.14	2.74	3.8%	2.4%	0.079	0.037	0.07%
Ream Real Estate	0.114	0.006	5.56%	0.87	(4.59)	1.9%	12	-44%	30%	0.00	0.00	-19.0%	-10.1%	0.204	0.060	0.04%
Arkan Al Kuwait Real Estate	0.085	-0.004	-4.49%	0.61	9.21	9.2%	21	4%	-4%	0.00	0.00	6.6%	3.5%	0.100	0.076	0.07%
Kuwait Business Town Real Estate	0.031	-0.002	-5.99%	0.29	8.02	0.2%	20	7%	-29%	0.06	2.04	3.6%	2.7%	0.046	0.022	0.06%
Dalqan Real Estate	0.318	0.000	0.00%	2.91	58.98	0.0%	19	0%	0%	0.00	0.00	4.9%	4.9%	0.318	0.318	0.06%
Sokouk Holding	0.027	0.000	-1.44%	0.34	(4.56)	0.0%	16	0%	-22%	0.09	3.19	-7.4%	-4.7%	0.040	0.022	0.05%
Tijara and Realestate Investment	0.047	0.000	0.00%	0.44	12.42	4.2%	17	17%	-6%	0.00	0.00	3.6%	1.9%	0.055	0.034	0.05%
Al-Arabiya Real Estate	0.026	-0.002	-7.14%	0.23	7.88	2.4%	13	-2%	-12%	0.18	6.81	2.9%	1.1%	0.033	0.020	0.04%
Aqar Real Estate Investments	0.063	0.003	4.65%	0.46	5.26	7.9%	13	6%	-21%	0.00	0.00	8.7%	7.3%	0.089	0.058	0.04%
Mashaer Holding	0.061	0.000	0.00%	0.46	6.51	0.0%	11	5%	-22%	0.01	0.10	7.1%	5.0%	0.086	0.048	0.03%
Investors Holding Group	0.019	0.000	0.53%	0.95	(0.89)	0.0%	12	20%	135%	0.12	6.24	-106.5%	-57.2%	0.032	0.007	0.04%
Dar Al Thuraya Real Estate	0.072	0.000	0.00%	0.68	18.90	0.0%	11	-1%	2%	0.00	0.00	3.6%	3.6%	0.190	0.040	0.03%
Osos Holding Group	0.091	0.000	0.00%	0.72	6.83	10.5%	10	4%	-9%	0.00	0.02	10.5%	7.0%	0.118	0.081	0.03%
Al Massaleh Real Estate	0.039	0.002	4.05%	0.43	(5.37)	0.0%	9	11%	4%	0.00	0.02	-8.1%	-1.9%	0.040	0.026	0.03%
Abyaar Real Estate Development	0.007	0.000	0.00%	0.21	(0.51)	0.0%	8	0%	-6%	0.00	0.00	-40.9%	-12.4%	0.013	0.005	0.02%
Kuwait Remal Real Estate	0.022	0.000	0.00%	0.33	(3.02)	0.0%	7	9%	-10%	0.00	0.00	-11.0%	-3.9%	0.027	0.013	0.02%
Kuwait Real Estate Holding	0.027	0.000	1.52%	0.04	0.72	6.6%	5	3%	-7%	0.00	0.02	5.5%	2.2%	0.034	0.022	0.02%
Taameer Real Estate Investment	0.021	-0.001	-5.50%	0.31	(4.36)	0.0%	5	10%	-22%	0.19	9.08	-7.0%	-4.5%	0.034	0.013	0.01%
Sanam Real Estate	0.030	-0.002	-4.79%	0.38	40.36	0.0%	4	-15%	-25%	0.00	0.00	0.9%	0.9%	0.043	0.027	0.01%
Mena Real Estate	0.030	-0.001	-3.59%	0.20	(65.75)	0.0%	4	5%	-29%	0.14	4.65	-0.3%	-0.2%	0.043	0.021	0.01%
Al Masaken International Real Estate Developr	0.028	0.000	-1.05%	0.31	34.30	0.6%	3	-22%	-36%	0.01	0.39	0.9%	0.4%	0.074	0.026	0.01%
Real Estate Trade Centers	0.030	-0.002	-4.84%	0.16	168.55	0.0%	4	9%	27%	0.00	0.12	0.1%	0.1%	0.050	0.018	0.01%
Ajwan Gulf Real Estate	0.011	0.000	0.00%	0.19	(7.68)	0.0%	2	0%	-29%	0.00	0.00	-2.5%	-2.2%	0.016	0.009	0.01%
Effect Real Estate	0.021	0.000	0.00%	0.29	(8.85)	4.9%	2	0%	0%	0.00	0.00	-3.3%	-3.2%	0.021	0.021	0.01%
Al Mudon International Real Estate	0.016	0.000	0.00%	0.12	(8.22)	0.0%	2	0%	-35%	0.00	0.00	-1.5%	-1.4%	0.029	0.015	0.00%
Total Real estate - 39 Companies				0.64	23.05	2.5%	1,969			4.62	53.61	2.79%	2.96%			6.06%

DAILY MARKET COVERAGE REPORT

NIC MENA SECURITIES - RESEARCH AND STUDIES DEP



Technology	Price			Valuation Multiples			MKT Cap	Price Performance		Trading Indicators		ROE	ROA	52 Week (KD)		MKT Cap
	Company	Close (KD)	Day Δ	Day % Δ	PBV(X)	PE(X)		DY%	Mn KD	MTD(%)	YTD (%)			Value (Mn KD)	(Mn Shrs)	
Automated Systems	0.071	0.001	2.00%	0.56	(69.26)	5.6%	7	1%	1%	0.00	0.04	-0.8%	-0.7%	0.087	0.051	0.02%
Total Technology - 1 Companies				0.56	(69.26)	5.6%	7			0.00	0.04	-0.81%	-0.73%			0.02%

Telecom	Price			Valuation Multiples			MKT Cap	Price Performance		Trading Indicators		ROE	ROA	52 Week (KD)		MKT Cap
	Company	Close (KD)	Day Δ	Day % Δ	PBV(X)	PE(X)		DY%	Mn KD	MTD(%)	YTD (%)			Value (Mn KD)	(Mn Shrs)	
Mobile Telecommunications	0.601	-0.013	-2.12%	2.00	11.99	5.2%	2,601	5%	1%	4.83	7.99	16.7%	4.6%	0.629	0.407	8.00%
Kuwait Telecommunications	0.843	-0.012	-1.40%	1.95	9.65	4.2%	421	0%	7%	0.01	0.01	20.2%	11.1%	0.870	0.680	1.29%
National Mobile Telecommunications	0.621	-0.005	-0.80%	0.54	10.33	10.4%	311	3%	-25%	0.03	0.05	5.3%	2.4%	0.835	0.550	0.96%
AAN Digital Services	0.014	0.000	1.49%	0.40	44.36	0.0%	12	5%	1%	0.21	15.42	0.9%	0.7%	0.021	0.009	0.04%
Hayat Communications	0.058	0.000	-0.68%	0.50	24.57	0.0%	5	-1%	-23%	0.00	0.02	2.0%	0.8%	0.098	0.033	0.02%
Telecom - 5 Companies				1.58	11.51	5.5%	3,350			5.08	23.49	13.70%	7.86%			10.30%

Utilities	Price			Valuation Multiples			MKT Cap	Price Performance		Trading Indicators		ROE	ROA	52 Week (KD)		MKT Cap
	Company	Close (KD)	Day Δ	Day % Δ	PBV(X)	PE(X)		DY%	Mn KD	MTD(%)	YTD (%)			Value (Mn KD)	(Mn Shrs)	
Shamal Az-Zour Al-Oula Power & Water	0.326	-0.001	-0.31%	4.68	29.15	0.0%	359	2%	0%	0.95	2.89	16.1%	2.3%	0.500	0.297	1.10%
Total Utilities - 1 Companies				4.68	29.15	0.0%	359			0.95	2.89	16.06%	2.26%			1.10%

Total Market 173 Companies				1.30	15.70	3.75%	32,507			66.71	314.76	8.26%	2.76%			100%
-----------------------------------	--	--	--	-------------	--------------	--------------	---------------	--	--	--------------	---------------	--------------	--------------	--	--	-------------

End of Report

The information contained in this document is proprietary to NIC and is for use only by the persons to whom it is issued. This document is confidential and may not be distributed either in part or in whole without the express agreement of NIC. It is intended solely for the use of the individual or entity to whom it is addressed and others authorized to receive it.

Note : ROE and ROA is calculated based on LTM net profit & shareholders' equity and LTM Operating Profits & Total Assets

Sources : National Investments Company Research and Studies Departments



شركة الاستثمار الوطنية
NATIONAL INVESTMENTS COMPANY

Sharq, Al Mutanabi Street, Khaleejia Tower | P.O. Box 25667, Safat 13117, Kuwait

T.: +965 2226 6666 | Fax: +965 2226 6793 | www.nic.com.kw