



شركة الاستثمارات الوطنية  
NATIONAL INVESTMENTS COMPANY

**Boursa Kuwait – Daily Market Report**  
**MENA Securities – Research & Studies Dep.**

Monday, September 21, 2020

# DAILY MARKET COVERAGE REPORT

## NIC MENA SECURITIES - RESEARCH AND STUDIES DEP



Index	Close	DTD Chg Net	DTD (%)	YTD (%)	52W High	52W Low	MKT CAP Bn (KD)	PBV (X)	PE (X)	DY (%)
All Share Index	5,533.73	29.57	0.54%	-11.9%	6,416.43	4,339.58	32.07	1.28	15.49	3.80%
Premier Index	6,116.12	41.01	0.68%	-12.3%	7,172.32	4,498.65	23.89	1.72	14.36	3.50%
Main Index	4,378.94	6.01	0.14%	-10.8%	4,932.47	3,965.63	8.18	0.73	20.11	4.67%
NIC 50 Index	6,784.60	43.30	0.64%	-9.0%	7,517.86	5,014.61	27.05	1.46	14.70	3.73%

Index	Value Mn(KD)	Volume (Mn share)
All Share Index	58.01	526.03
Premier Index	38.67	93.30
Main Index	19.34	432.72

Market Breadth	UP	Down	No Chg
All Share Index	65	49	59
Premier Index	11	6	3
Main Index	54	43	56

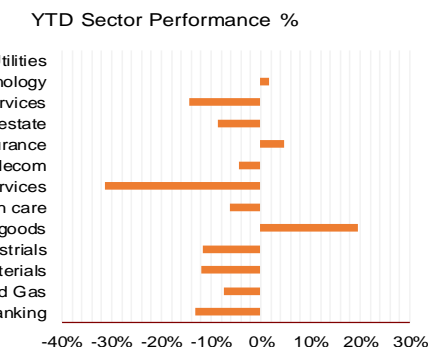
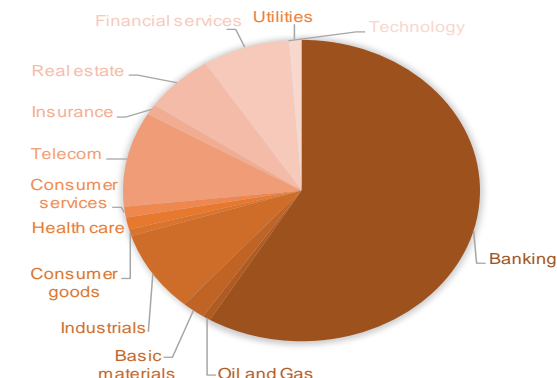
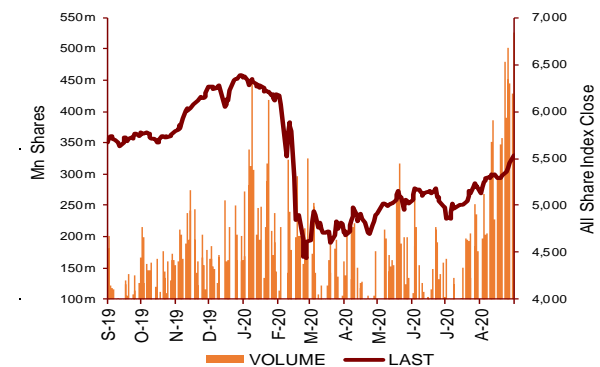
Today's Top 5 Gainer %	Close KD	Value KD	DTD (%)
Al-Enmaa Real Estate	0.051	738,983	10.39%
Amwal International Investment	0.036	0	9.88%
Tijara and Realestate Investme	0.041	3,500	8.85%
Munshaat Real Estate Projects	0.070	162,163	8.36%
Real Estate Trade Centers	0.031	1,741	6.55%

Today's Top 5 Loser %	Close KD	Value KD	DTD (%)
Dar Al Thuraya Real Estate	0.077	2,121	-14.62%
Al Bareeq Holding	0.079	66	-9.60%
Energy House Holding	0.021	3,733	-5.00%
Al Masaken International R	0.031	16	-4.85%
Senery Holding	0.018	1,947	-4.76%

Today's Top 5 by Value	Close KD	DTD Chg	Trade Val Mn(KD)
Kuwait Finance House	0.666	1.83%	12.77
Aayan Leasing and Investment	0.088	-0.79%	3.68
National Bank of Kuwait	0.880	0.11%	3.37
Ahli United Bank BSC	0.240	-0.41%	3.16
Mobile Telecommunications	0.583	-0.17%	2.75

Top 5 by Volume	Close KD	DTD Chg	Trade Vol Mn(Shrs)
Investors Holding Group	0.016	5.84%	150.27
Sokouk Holding	0.028	4.10%	48.14
Aayan Leasing and Investrn	0.088	-0.79%	41.18
Gulf Petroleum Investment	0.020	1.03%	21.28
Kuwait Finance House	0.666	1.83%	19.34

Sector	Close	DTD Chg Net	DTD (%)	YTD (%)	52W High	52W Low	MKT CAP Bn (KD)	PBV (X)	PE (X)	DY (%)
Banking	1,289.31	7.510	0.59%	-13.1%	1,536.8	986.4	18.79	1.71	15.66	3.4%
Oil and Gas	1,141.29	-6.810	-0.59%	-7.5%	1,372.2	985.7	0.23	0.83	26.72	5.3%
Basic materials	798.55	7.840	0.99%	-12.1%	992.5	561.7	0.67	0.96	14.68	7.5%
Industrials	821.45	7.460	0.92%	-11.5%	937.5	602.9	2.80	0.89	13.36	5.0%
Consumer goods	763.53	1.080	0.14%	19.6%	810.7	548.6	0.23	1.51	92.54	2.2%
Health care	829.21	0.000	0.00%	-6.3%	921.9	815.0	0.41	4.19	48.62	1.0%
Consumer services	736.63	-0.190	-0.03%	-31.3%	1,083.1	674.8	0.37	0.84	35.38	4.7%
Telecom	1,066.09	-1.570	-0.15%	-4.5%	1,116.7	802.2	3.27	1.54	11.22	5.7%
Insurance	998.87	-7.870	-0.78%	4.7%	1,008.5	901.0	0.36	0.75	8.48	5.9%
Real estate	969.37	20.460	2.16%	-8.5%	1,083.4	763.2	2.04	0.67	23.87	2.4%
Financial services	926.50	-0.480	-0.05%	-14.3%	1,097.0	801.4	2.53	0.72	16.37	4.1%
Technology	523.80	22.550	4.50%	1.7%	625.7	371.0	0.01	0.57	-69.84	5.6%
Utilities	881.58	-7.890	-0.89%	0.0%	1,042.1	781.6	0.37	4.81	29.96	0.0%
	5,533.73	29.57	0.54%	-11.9%	6,416.4	4,339.6	32.07	1.28	15.49	3.80%



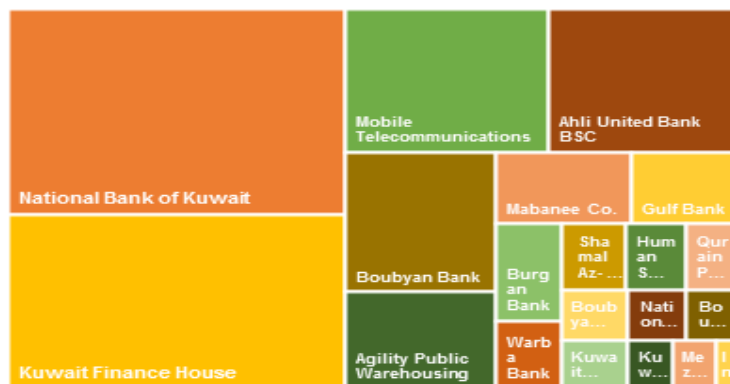
# DAILY MARKET COVERAGE REPORT

## NIC MENA SECURITIES - RESEARCH AND STUDIES DEP

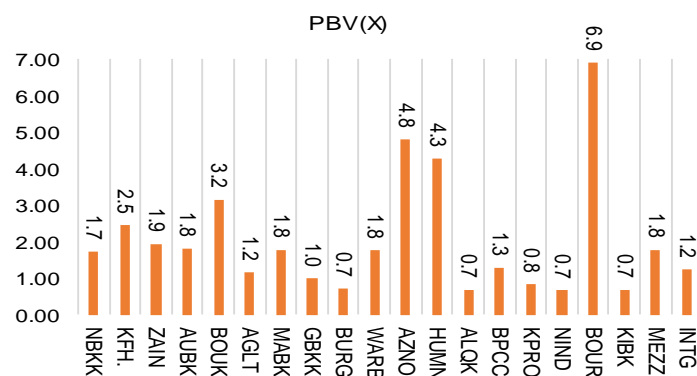


Premier Market	Price			Valuation Multiples			MKT Cap	Price Performance		Trading Indicators		ROE	ROA	52 Week (KD)	
	Close (KD)	Day Δ	Day % Δ	PBV(X)	PE(X)	DY%	Mn KD	MTD(%)	YTD (%)	Value (Mn KD)	(Mn Shrs)	(%)	(%)	High	Low
National Bank of Kuwait	0.880	0.001	0.11%	1.74	14.89	3.6%	5,976	2%	-14%	3.37	3.83	11.7%	1.4%	1.062	0.654
Kuwait Finance House	0.666	0.012	1.83%	2.45	20.13	2.5%	5,054	6%	-10%	12.77	19.34	12.2%	1.3%	0.761	0.473
Mobile Telecommunications	0.583	-0.001	-0.17%	1.94	11.63	5.3%	2,523	-1%	-3%	2.75	4.71	16.7%	4.6%	0.604	0.407
Ahli United Bank BSC	0.240	-0.001	-0.41%	1.81	10.57	5.1%	2,316	3%	-18%	3.16	13.11	17.1%	1.8%	0.311	0.160
Boubyan Bank	0.600	0.005	0.84%	3.16	29.00	1.1%	1,817	3%	-2%	1.32	2.20	10.9%	1.2%	0.638	0.380
Agility Public Warehousing	0.667	0.013	1.99%	1.16	14.71	2.7%	1,276	7%	-6%	2.24	3.40	7.9%	4.2%	0.748	0.357
Mabane Co.	0.760	0.031	4.25%	1.78	14.89	1.4%	840	19%	-11%	1.69	2.23	11.9%	5.8%	0.877	0.434
Gulf Bank	0.225	0.000	0.00%	0.98	10.27	4.4%	653	6%	-26%	2.17	9.61	9.6%	1.0%	0.317	0.180
Burgan Bank	0.207	0.000	0.00%	0.72	6.41	5.5%	542	4%	-32%	0.72	3.48	11.3%	1.2%	0.324	0.175
Warba Bank	0.243	-0.001	-0.41%	1.76	23.14	0.0%	383	23%	-7%	0.85	3.51	7.6%	0.5%	0.279	0.164
Shamal Az-Zour Al-Oula Power & Water	0.335	-0.003	-0.89%	4.81	29.96	0.0%	369	5%	0%	2.10	6.24	16.1%	2.3%	0.500	0.297
Human Soft Holding	2.819	-0.039	-1.36%	4.26	9.56	6.5%	343	12%	-6%	0.29	0.10	44.6%	30.3%	3.470	1.944
Qurain Petrochemical Industries	0.282	0.003	1.08%	0.69	10.20	5.4%	288	-1%	-9%	0.28	1.00	6.7%	3.6%	0.323	0.163
Boubyan Petrochemical	0.569	0.007	1.25%	1.28	24.27	9.1%	287	6%	-15%	0.13	0.22	5.3%	2.1%	0.800	0.395
Kuwait Projects Company Holding	0.155	0.000	0.00%	0.83	9.36	6.0%	281	4%	-28%	0.29	1.87	8.9%	0.3%	0.225	0.147
National Industries Group Holding	0.177	0.001	0.57%	0.67	5.45	6.1%	253	14%	-26%	0.59	3.34	12.3%	3.7%	0.247	0.121
Boursa Kuwait Securities Co	1.106	0.006	0.55%	6.92	23.15	0.0%	222	0%	0%	1.23	1.11	29.9%	26.5%	1.210	0.990
Kuwait International Bank	0.189	0.002	1.07%	0.69	11.24	5.3%	193	10%	-27%	2.60	13.72	6.1%	0.6%	0.270	0.162
Mezzan Holding	0.618	-0.001	-0.16%	1.78	33.40	2.7%	188	-5%	24%	0.08	0.12	5.3%	2.2%	0.665	0.428
Integrated Holding	0.383	0.003	0.79%	1.23	10.67	10.4%	84	9%	-30%	0.06	0.16	11.5%	8.5%	0.600	0.342
<b>Total</b>		<b>41.01</b>	<b>0.68%</b>	<b>1.72</b>	<b>14.36</b>	<b>3.50%</b>	<b>23,888</b>	<b>4.4%</b>	<b>-12.3%</b>	<b>38.67</b>	<b>93.30</b>	<b>12.01%</b>	<b>1.56%</b>		

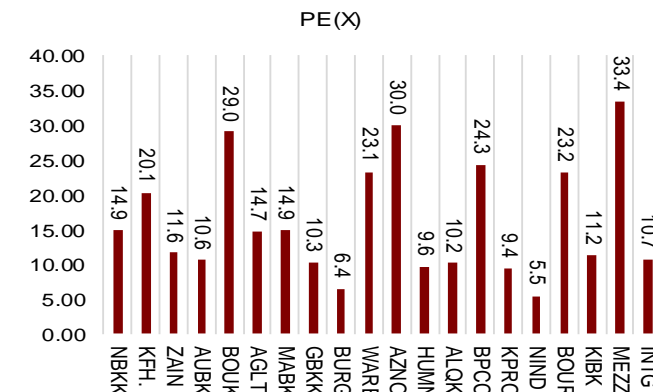
Market Capitalization



Price to Book Value

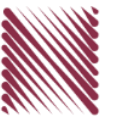


Price to Earning Value

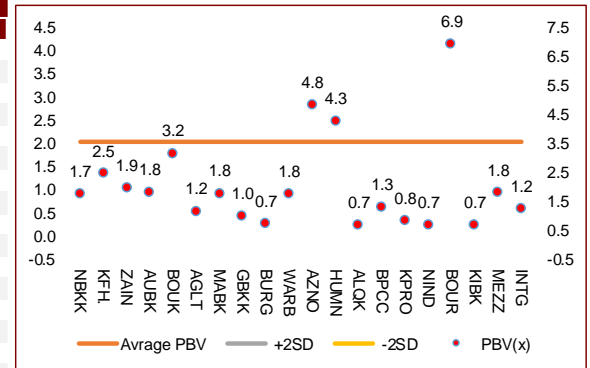


# DAILY MARKET COVERAGE REPORT

## NIC MENA SECURITIES - RESEARCH AND STUDIES DEP



Premier Market	Price			Valuation Multiples			MKT Cap	Price Performance		ROE	ROA
Company	Close (KD)	Day Δ	Day % Δ	PBV(X)	PE(X)	DY%	Mn KD	MTD(%)	YTD (%)	(%)	(%)
National Bank of Kuwait	0.880	0.001	0.11%	1.74	14.9	3.6%	5,976	2.3%	-13.6%	11.7%	1.4%
Kuwait Finance House	0.666	0.012	1.83%	2.45	20.1	2.5%	5,054	6.4%	-9.7%	12.2%	1.3%
Mobile Telecommunications	0.583	-0.001	-0.17%	1.94	11.6	5.3%	2,523	-1.2%	-2.8%	16.7%	4.6%
Ahli United Bank BSC	0.240	-0.001	-0.41%	1.81	10.6	5.1%	2,316	3.0%	-18.3%	17.1%	1.8%
Boubyan Bank	0.600	0.005	0.84%	3.16	29.0	1.1%	1,817	3.5%	-2.0%	10.9%	1.2%
Agility Public Warehousing	0.667	0.013	1.99%	1.16	14.7	2.7%	1,276	6.9%	-6.2%	7.9%	4.2%
Mabane Co.	0.760	0.031	4.25%	1.78	14.9	1.4%	840	19.3%	-11.0%	11.9%	5.8%
Gulf Bank	0.225	0.000	0.00%	0.98	10.3	4.4%	653	5.6%	-25.7%	9.6%	1.0%
Burgan Bank	0.207	0.000	0.00%	0.72	6.4	5.5%	542	4.0%	-32.2%	11.3%	1.2%
Warba Bank	0.243	-0.001	-0.41%	1.76	23.1	0.0%	383	22.6%	-6.8%	7.6%	0.5%
Shamal Az-Zour Al-Oula Power & Water	0.335	-0.003	-0.89%	4.81	30.0	0.0%	369	4.7%	0.0%	16.1%	2.3%
Human Soft Holding	2.819	-0.039	-1.36%	4.26	9.6	6.5%	343	11.6%	-6.4%	44.6%	30.3%
Qurain Petrochemical Industries	0.282	0.003	1.08%	0.69	10.2	5.4%	288	-1.1%	-9.0%	6.7%	3.6%
Boubyan Petrochemical	0.569	0.007	1.25%	1.28	24.3	9.1%	287	6.2%	-14.8%	5.3%	2.1%
Kuwait Projects Company Holding	0.155	0.000	0.00%	0.83	9.4	6.0%	281	4.0%	-28.2%	8.9%	0.3%
National Industries Group Holding	0.177	0.001	0.57%	0.67	5.5	6.1%	253	14.1%	-26.1%	12.3%	3.7%
Boursa Kuwait Securities Co	1.106	0.006	0.55%	6.92	23.2	0.0%	222	0.0%	0.0%	29.9%	26.5%
Kuwait International Bank	0.189	0.002	1.07%	0.69	11.2	5.3%	193	10.5%	-27.2%	6.1%	0.6%
Mezzan Holding	0.618	-0.001	-0.16%	1.78	33.4	2.7%	188	-4.9%	23.6%	5.3%	2.2%
Integrated Holding	0.383	0.003	0.79%	1.23	10.7	10.4%	84	9.4%	-30.5%	11.5%	8.5%
<b>Total</b>		<b>41.01</b>	<b>0.68%</b>	<b>1.72</b>	<b>14.36</b>	<b>3.50%</b>	<b>23,888</b>	<b>4.4%</b>	<b>-12.3%</b>	<b>12.01%</b>	<b>1.56%</b>



Premier Market	Price			Moving Average		RSI	MKT Cap	Price Performance		52 Week (KD)	
Description	Close (KD)	Day Δ	Day % Δ	50 Day	200 Day	14 Day	Mn KD	MTD(%)	YTD (%)	High	Low
Premier Index	6,116	41.01	0.68%	5,671	5,894	78	23,888	4.4%	-12.3%	7,172	4,499

### Top 5 Performrs (Today's Price Change)

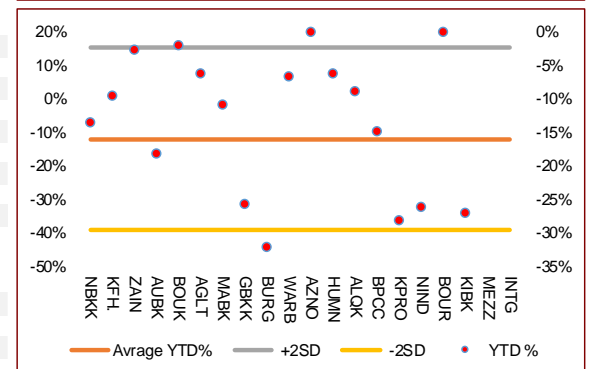
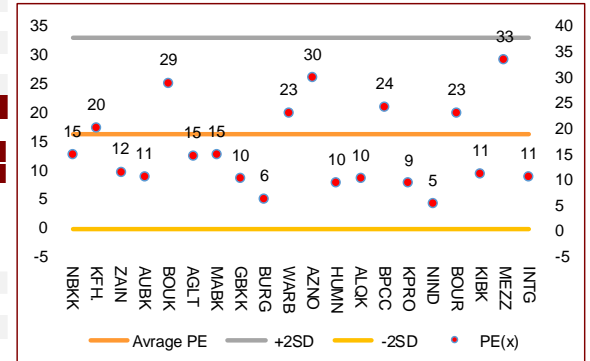
Mabane Co.	0.760	0.031	4.25%	0.640	0.684	92	840	19.3%	-11.0%	0.877	0.434
Agility Public Warehousing	0.667	0.013	1.99%	0.636	0.613	81	1,276	6.9%	-6.2%	0.748	0.357
Kuwait Finance House	0.666	0.012	1.83%	0.610	0.638	84	5,054	6.4%	-9.7%	0.761	0.473
Boubyan Petrochemical	0.569	0.007	1.25%	0.561	0.579	71	287	6.2%	-14.8%	0.800	0.395
Qurain Petrochemical Industries	0.282	0.003	1.08%	0.283	0.268	45	288	-1.1%	-9.0%	0.323	0.163

### Middle Performrs (Today's Price Change)

Kuwait International Bank	0.189	0.002	1.07%	0.173	0.206	83	193	10.5%	-27.2%	0.270	0.162
Boubyan Bank	0.600	0.005	0.84%	0.557	0.542	72	1,817	3.5%	-2.0%	0.638	0.380
Integrated Holding	0.383	0.003	0.79%	0.376	0.452	75	84	9.4%	-30.5%	0.600	0.342
National Industries Group Holding	0.177	0.001	0.57%	0.161	0.187	95	253	14.1%	-26.1%	0.247	0.121
Boursa Kuwait Securities Co	1.106	0.006	0.55%	0.127	0.032	68	222	0.0%	0.0%	1.210	0.990
National Bank of Kuwait	0.880	0.001	0.11%	0.826	0.851	63	5,976	2.3%	-13.6%	1.062	0.654
Gulf Bank	0.225	0.000	0.00%	0.207	0.239	76	653	5.6%	-25.7%	0.317	0.180
Burgan Bank	0.207	0.000	0.00%	0.193	0.233	83	542	4.0%	-32.2%	0.324	0.175
Kuwait Projects Company Holding	0.155	0.000	0.00%	0.152	0.179	62	281	4.0%	-28.2%	0.225	0.147
Mezzan Holding	0.618	-0.001	-0.16%	0.100	0.100	26	188	-4.9%	23.6%	1.210	0.996

### Bottom 5 Performrs (Today's Price Change)

Human Soft Holding	2.819	-0.039	-1.36%	2.677	2.807	75	343	11.6%	-6.4%	3.470	1.944
Shamal Az-Zour Al-Oula Power & Water	0.335	-0.003	-0.89%	0.172	0.043	67	369	4.7%	0.0%	0.500	0.297
Warba Bank	0.243	-0.001	-0.41%	0.206	0.221	76	383	22.6%	-6.8%	0.279	0.164
Ahli United Bank BSC	0.240	-0.001	-0.41%	0.209	0.228	58	2,316	3.0%	-18.3%	0.311	0.160
Mobile Telecommunications	0.583	-0.001	-0.17%	0.567	0.548	42	2,523	-1.2%	-2.8%	0.604	0.407



# DAILY MARKET COVERAGE REPORT

## NIC MENA SECURITIES - RESEARCH AND STUDIES DEP



Banking Sector	Price			Valuation Multiples			MKT Cap	Price Performance		Trading Indicators		ROE	ROA	52 Week (KD)	
	Company	Close (KD)	Day Δ	Day % Δ	PBV(X)	PE(X)		DY%	Mn KD	MTD(%)	YTD (%)			Value (Mn KD)	(Mn Shrs)
National Bank of Kuwait	0.880	0.001	0.11%	1.74	14.89	3.6%	5,976	2%	-14%	3.37	3.83	11.7%	1.4%	1.062	0.654
Kuwait Finance House	0.666	0.012	1.83%	2.45	20.13	2.5%	5,054	6%	-10%	12.77	19.34	12.2%	1.3%	0.761	0.473
Ahli United Bank BSC	0.240	-0.001	-0.41%	1.81	10.57	5.1%	2,316	3%	-18%	3.16	13.11	17.1%	1.8%	0.311	0.160
Boubyan Bank	0.600	0.005	0.84%	3.16	29.00	1.1%	1,817	3%	-2%	1.32	2.20	10.9%	1.2%	0.638	0.380
Commercial Bank of Kuwait	0.500	0.000	0.00%	1.32	0.00	3.7%	965	0%	-5%	0.00	0.00	0.0%	0.0%	0.555	0.465
Gulf Bank	0.225	0.000	0.00%	0.98	10.27	4.4%	653	6%	-26%	2.17	9.61	9.6%	1.0%	0.317	0.180
Ahli United Bank	0.290	0.002	0.69%	1.24	10.28	4.7%	566	12%	-11%	0.14	0.48	12.1%	1.3%	0.330	0.225
Burgan Bank	0.207	0.000	0.00%	0.72	6.41	5.5%	542	4%	-32%	0.72	3.48	11.3%	1.2%	0.324	0.175
Warba Bank	0.243	-0.001	-0.41%	1.76	23.14	0.0%	383	23%	-7%	0.85	3.51	7.6%	0.5%	0.279	0.164
Al Ahli Bank of Kuwait	0.200	0.001	0.50%	0.57	11.20	7.0%	321	18%	-21%	0.88	4.36	5.1%	0.6%	0.310	0.156
Kuwait International Bank	0.189	0.002	1.07%	0.69	11.24	5.3%	193	10%	-27%	2.60	13.72	6.1%	0.6%	0.270	0.162
<b>Total Banking Sector - 11 Companies</b>				<b>1.71</b>	<b>15.66</b>	<b>3.4%</b>	<b>18,787</b>			<b>27.98</b>	<b>73.63</b>	<b>10.90%</b>	<b>1.21%</b>		

Basic materials	Price			Valuation Multiples			MKT Cap	Price Performance		Trading Indicators		ROE	ROA	52 Week (KD)	
	Company	Close (KD)	Day Δ	Day % Δ	PBV(X)	PE(X)		DY%	Mn KD	MTD(%)	YTD (%)			Value (Mn KD)	(Mn Shrs)
Qurain Petrochemical Industries	0.282	0.003	1.08%	0.69	10.20	5.4%	288	-1%	-9%	0.28	1.00	6.7%	3.6%	0.323	0.163
Boubyan Petrochemical	0.569	0.007	1.25%	1.28	24.27	9.1%	287	6%	-15%	0.13	0.22	5.3%	2.1%	0.800	0.395
Al Kout Industrial Projects	0.769	0.000	0.00%	2.50	16.21	6.5%	78	0%	-10%	0.00	0.00	15.4%	11.3%	0.850	0.769
Kuwait Foundry	0.260	0.000	0.00%	0.87	21.01	20.5%	19	9%	-22%	0.00	0.00	4.1%	3.8%	0.510	0.192
<b>Total Basic materials - 4 Companies</b>				<b>0.96</b>	<b>14.68</b>	<b>7.5%</b>	<b>671</b>			<b>0.40</b>	<b>1.22</b>	<b>6.57%</b>	<b>5.07%</b>		

Consumer goods	Price			Valuation Multiples			MKT Cap	Price Performance		Trading Indicators		ROE	ROA	52 Week (KD)	
	Company	Close (KD)	Day Δ	Day % Δ	PBV(X)	PE(X)		DY%	Mn KD	MTD(%)	YTD (%)			Value (Mn KD)	(Mn Shrs)
Mezzan Holding	0.618	-0.001	-0.16%	1.78	33.40	2.7%	188	-5%	24%	0.08	0.12	5.3%	2.2%	0.665	0.428
Livestock Transport and Trading	0.186	0.003	1.64%	0.97	33.15	0.1%	39	-1%	5%	0.01	0.04	2.9%	2.0%	0.200	0.152
Danah Al Safat Foodstuff	0.012	0.000	0.00%	0.25	(0.30)	0.1%	1	0%	-25%	0.00	0.00	-84.8%	-43.2%	0.029	0.010
<b>Total Basic materials - 3 Companies</b>				<b>1.51</b>	<b>92.54</b>	<b>2.2%</b>	<b>228</b>			<b>0.08</b>	<b>0.16</b>	<b>1.64%</b>	<b>0.90%</b>		

# DAILY MARKET COVERAGE REPORT

## NIC MENA SECURITIES - RESEARCH AND STUDIES DEP



Consumer services	Price			Valuation Multiples			MKT Cap	Price Performance		Trading Indicators		ROE	ROA	52 Week (KD)	
Company	Close (KD)	Day Δ	Day % Δ	PBV(X)	PE(X)	DY%	Mn KD	MTD(%)	YTD (%)	Value (Mn KD)	(Mn Shrs)	(%)	(%)	High	Low
Jazeera Airways	0.571	-0.005	-0.87%	2.84	7.64	6.1%	114	2%	-48%	0.24	0.42	37.1%	9.0%	1.110	0.372
Kuwait National Cinema	0.685	0.000	0.00%	0.79	7.41	7.1%	64	2%	-35%	0.00	0.00	10.6%	7.2%	1.050	0.600
Oula Fuel Marketing	0.110	0.000	0.00%	0.66	11.51	5.4%	45	-2%	-14%	0.00	0.03	5.7%	3.2%	0.134	0.095
Al Soor Fuel Marketing	0.109	-0.002	-1.80%	0.67	12.76	4.5%	44	-1%	-13%	0.00	0.01	5.3%	3.7%	0.129	0.096
Sultan Center Food Products	0.057	0.002	4.00%	0.71	14.39	0.0%	32	4%	10%	0.02	0.31	4.9%	0.7%	0.060	0.036
IFA Hotels and Resorts	0.025	0.001	5.83%	0.91	(0.69)	0.0%	16	2%	-54%	0.24	9.70	-131.5%	-8.1%	0.062	0.021
Jiyad Holding	0.040	-0.001	-2.20%	0.36	8.00	0.0%	14	24%	4%	0.01	0.31	4.5%	2.8%	0.047	0.029
Kuwait Resorts	0.053	0.000	-0.74%	0.37	9.68	0.0%	10	16%	-8%	0.04	0.68	3.8%	3.2%	0.060	0.038
Alrai Media Group	0.037	0.000	0.00%	0.83	(2.41)	0.0%	9	0%	-2%	0.00	0.00	-34.2%	-20.0%	0.045	0.031
Future Kid Entertainment and Real Estate	0.077	0.000	0.00%	0.44	28.90	15.1%	8	0%	-13%	0.00	0.00	1.5%	0.9%	0.110	0.069
Al Eid Food	0.068	0.000	0.00%	0.46	5.41	0.0%	8	22%	3%	0.00	0.00	8.4%	6.1%	0.080	0.038
Kuwait Hotels	0.090	0.000	0.00%	1.26	(5.18)	0.0%	5	3%	-10%	0.00	0.00	-24.4%	-13.2%	0.101	0.069
Palms Agro Production	0.065	0.000	0.00%	0.55	(45.82)	15.3%	3	15%	62%	0.00	0.00	-1.2%	-0.9%	0.065	0.025
Kuwait Cable Vision	0.014	0.000	0.00%	0.52	(11.65)	0.0%	1	0%	0%	0.00	0.00	-4.5%	-3.0%	0.026	0.012
<b>Total Consumer services - 14 Companies</b>				<b>0.84</b>	<b>35.38</b>	<b>4.7%</b>	<b>373</b>			<b>0.55</b>	<b>11.47</b>	<b>2.38%</b>	<b>2.72%</b>		

Financial services	Price			Valuation Multiples			MKT Cap	Price Performance		Trading Indicators		ROE	ROA	52 Week (KD)	
Company	Close (KD)	Day Δ	Day % Δ	PBV(X)	PE(X)	DY%	Mn KD	MTD(%)	YTD (%)	Value (Mn KD)	(Mn Shrs)	(%)	(%)	High	Low
Egypt Kuwait Holding	0.370	0.000	0.00%	2.19	12.49	5.3%	379	-1%	-18%	0.00	0.00	17.6%	7.1%	0.500	0.318
Kuwait Projects Company Holding	0.155	0.000	0.00%	0.83	9.36	6.0%	281	4%	-28%	0.29	1.87	8.9%	0.3%	0.225	0.147
National Industries Group Holding	0.177	0.001	0.57%	0.67	5.45	6.1%	253	14%	-26%	0.59	3.34	12.3%	3.7%	0.247	0.121
Boursa Kuwait Securities Co	1.106	0.006	0.55%	6.92	23.15	0.0%	222	0%	0%	1.23	1.11	29.9%	26.5%	1.210	0.990
GFH Financial Group	0.051	0.000	-0.20%	0.55	6.94	5.6%	172	-1%	-27%	0.05	1.04	8.0%	1.3%	0.074	0.042
National Investments	0.139	-0.001	-0.71%	0.61	10.34	5.8%	111	18%	1%	0.50	3.53	5.9%	5.0%	0.158	0.080
Tamdeen Investment	0.320	0.000	0.00%	0.39	13.27	3.7%	109	29%	-7%	0.00	0.00	3.0%	2.2%	0.400	0.199
Alimtiiaz Investment Group	0.096	-0.001	-1.44%	0.45	4.98	8.3%	98	12%	-24%	0.33	3.41	9.1%	5.2%	0.137	0.071
Commercial Facilities	0.183	-0.003	-1.61%	0.57	7.05	9.2%	93	-1%	-16%	0.04	0.23	8.0%	4.2%	0.235	0.179
Aayan Leasing and Investment	0.088	-0.001	-0.79%	1.03	(4.82)	2.1%	70	49%	88%	3.68	41.18	-21.4%	-4.9%	0.102	0.032
Noor Financial Investment	0.172	0.001	0.58%	1.05	8.41	2.9%	68	4%	42%	0.03	0.20	12.5%	7.5%	0.184	0.076
Kuwait Investment	0.120	0.000	0.00%	0.52	3.76	8.4%	66	7%	-19%	0.33	2.76	13.9%	6.0%	0.172	0.095

# DAILY MARKET COVERAGE REPORT

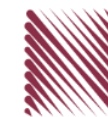
## NIC MENA SECURITIES - RESEARCH AND STUDIES DEP



Financial services	Price			Valuation Multiples			MKT Cap	Price Performance		Trading Indicators		ROE	ROA	52 Week (KD)		
	Company	Close (KD)	Day Δ	Day % Δ	PBV(X)	PE(X)	DY%	Mn KD	MTD(%)	YTD (%)	Value (Mn KD)	(Mn Shrs)	(%)	(%)	High	Low
Arzan Financial Group for Financing and Invest	0.056	-0.001	-1.75%	0.45	40.71	0.0%	45	-4%	137%	0.86	15.25	1.1%	0.7%	0.064	0.022	
Gulf Investment House	0.101	0.001	0.80%	1.13	186.45	0.0%	41	10%	58%	0.63	6.12	0.6%	0.5%	0.108	0.038	
Kuwait Financial Centre	0.083	0.000	0.36%	0.42	5.68	6.0%	40	2%	-22%	0.02	0.24	7.3%	3.5%	0.121	0.070	
Al Bareeq Holding	0.079	-0.008	-9.60%	0.83	15.80	0.0%	35	-25%	-21%	0.00	0.00	5.2%	5.0%	0.110	0.079	
Arabi Group Holdings	0.198	0.000	0.00%	1.07	(19.90)	0.0%	33	0%	-28%	0.00	0.00	-5.4%	-0.6%	0.337	0.079	
Kuwait and Middle East Financial Investment	0.117	0.002	1.74%	1.90	46.73	0.0%	31	2%	31%	0.00	0.02	4.1%	3.2%	0.138	0.063	
Asiya Capital Investments	0.033	-0.001	-3.27%	0.35	16.75	0.2%	25	5%	-21%	0.00	0.12	2.1%	2.0%	0.041	0.029	
Securities House	0.046	-0.001	-1.70%	0.63	(67.54)	0.0%	26	15%	2%	0.21	4.42	-0.9%	-0.7%	0.050	0.027	
Privatization Holding	0.043	0.000	0.00%	0.31	(38.32)	0.0%	26	1%	-14%	0.05	1.24	-0.8%	-0.5%	0.059	0.037	
Umm Al Qaiwain General Investment Co	0.073	0.003	4.86%	0.49	13.80	5.0%	27	-18%	9%	0.00	0.02	3.6%	3.3%	0.096	0.052	
KAMCO Investment	0.072	0.000	-0.41%	0.44	8.15	0.0%	25	3%	-20%	0.08	1.04	5.4%	2.3%	0.111	0.060	
Inoest BSC Public	0.070	0.001	1.30%	0.49	9.39	8.4%	21	24%	10%	0.15	2.22	5.2%	2.9%	0.072	0.044	
Coast Investment and Development	0.035	0.000	0.29%	0.37	34.98	0.0%	21	3%	-12%	0.01	0.30	1.1%	1.0%	0.045	0.026	
First Investment	0.030	0.000	1.00%	0.47	(0.41)	0.0%	20	1%	-12%	0.13	4.22	-113.6%	-62.0%	0.045	0.022	
Al Madar Finance and Investment	0.088	0.002	2.68%	0.80	13.14	0.0%	18	4%	-5%	0.27	3.04	6.1%	5.0%	0.148	0.062	
Al Manar Financing and Leasing	0.049	0.000	0.00%	0.45	12.63	1.0%	15	5%	-5%	0.00	0.02	3.5%	2.7%	0.060	0.037	
Manazel Holding	0.035	-0.001	-1.71%	0.76	22.17	0.0%	15	6%	-11%	0.33	9.39	3.4%	0.8%	0.048	0.021	
Bayan Investment	0.044	0.003	6.04%	0.44	(22.68)	0.0%	16	0%	25%	0.03	0.57	-1.9%	-0.8%	0.053	0.031	
Kuwait Finance and Investment	0.045	0.000	0.00%	0.36	20.34	0.0%	14	1%	-8%	0.00	0.00	1.8%	1.2%	0.058	0.038	
National International Holding	0.062	0.001	1.81%	0.33	7.46	4.7%	13	2%	-15%	0.02	0.27	4.4%	3.3%	0.081	0.051	
Osoul Investment	0.082	0.001	0.62%	0.61	6.85	0.0%	13	-3%	9%	0.00	0.01	9.0%	8.2%	0.121	0.070	
UniCap Investment and Finance	0.046	0.002	3.60%	0.47	(23.08)	0.0%	11	26%	-15%	0.06	1.23	-2.0%	-1.0%	0.057	0.035	
Amar Finance and Leasing	0.056	0.003	5.66%	0.63	46.88	0.0%	11	9%	47%	0.00	0.00	1.3%	1.2%	0.064	0.037	
Gulf North Africa Holding	0.058	0.002	3.91%	0.78	75.24	0.0%	9	5%	-6%	0.02	0.42	1.0%	0.6%	0.062	0.052	
International Financial Advisors	0.031	0.000	0.00%	0.93	(0.42)	2.1%	8	0%	-42%	0.00	0.00	-222.8%	-19.3%	0.060	0.027	
Al Salam Group Holding	0.027	0.000	-0.37%	0.23	203.08	0.0%	7	17%	-7%	0.17	6.14	0.1%	0.1%	0.033	0.018	
Amwal International Investment	0.036	0.003	9.88%	0.66	13.16	0.0%	6	-1%	19%	0.00	0.00	5.0%	2.6%	0.055	0.030	
Credit Rating and Collection	0.032	0.000	0.00%	0.98	(21.53)	0.0%	5	-9%	60%	0.00	0.00	-4.6%	-4.3%	0.035	0.019	
Al Madina for Finance and Investment	0.013	0.000	0.77%	0.44	(2.46)	0.0%	5	22%	-13%	0.05	3.75	-17.9%	-7.7%	0.019	0.009	
Ekttitab Holding	0.015	0.000	1.33%	0.37	(10.70)	0.0%	5	19%	1%	0.00	0.24	-3.4%	-3.0%	0.017	0.010	
Kuwait Syrian Holding Co	0.027	0.000	-0.75%	0.23	(13.54)	0.0%	5	0%	-16%	0.00	0.01	-1.7%	-1.1%	0.043	0.022	
National Consumer Holding	0.051	0.000	0.00%	0.56	249.43	0.0%	5	-7%	-8%	0.00	0.00	0.2%	0.2%	0.100	0.010	
Warba Capital Holding	0.047	0.002	3.98%	0.52	(7.47)	0.0%	5	-6%	-27%	0.00	0.03	-7.0%	-6.2%	0.075	0.042	
Al Deera Holding	0.016	0.000	0.00%	0.70	(9.02)	0.0%	3	0%	-20%	0.00	0.00	-7.7%	-1.7%	0.022	0.011	
Al Mal Investment Company	0.009	0.000	-1.06%	0.41	(0.87)	0.0%	3	3%	-6%	0.04	4.75	-47.6%	-23.3%	0.016	0.008	
Gulf Franchising Holding	0.050	0.000	0.00%	0.79	(2.18)	0.0%	2	-14%	-33%	0.00	0.00	-36.2%	-10.8%	0.160	0.001	
Tamkeen Holding	0.005	0.000	0.00%	0.05	(7.18)	0.0%	0	0%	0%	0.00	0.00	-0.7%	-0.7%	0.005	0.005	
<b>Total Financial services - 49 Companies</b>				<b>0.72</b>	<b>16.37</b>	<b>4.1%</b>	<b>2,528</b>				<b>10.20</b>	<b>123.76</b>	<b>4.42%</b>	<b>4.14%</b>		

# DAILY MARKET COVERAGE REPORT

## NIC MENA SECURITIES - RESEARCH AND STUDIES DEP



Health care	Price			Valuation Multiples			MKT Cap	Price Performance		Trading Indicators		ROE	ROA	52 Week (KD)	
Company	Close (KD)	Day Δ	Day % Δ	PBV(X)	PE(X)	DY%	Mn KD	MTD(%)	YTD (%)	Value (Mn KD)	(Mn Shrs)	(%)	(%)	High	Low
Al-Maidan Clinic for Oral Health Services	1.220	0.000	0.00%	7.90	47.78	0.6%	305	0%	0%	0.00	0.00	16.5%	10.9%	1.240	1.220
Advanced Technology	0.627	0.000	0.00%	1.63	51.04	2.4%	94	0%	-23%	0.00	0.00	3.2%	0.7%	0.900	0.580
Yiaco Medical	0.707	0.000	0.00%	6.06	52.72	0.0%	12	0%	0%	0.00	0.00	11.5%	0.6%	0.707	0.707
<b>Total Health care - 3 Companies</b>				<b>4.19</b>	<b>48.62</b>	<b>1.0%</b>	<b>411</b>			<b>0.00</b>	<b>0.00</b>	<b>8.61%</b>	<b>4.68%</b>		

Industrials	Price			Valuation Multiples			MKT Cap	Price Performance		Trading Indicators		ROE	ROA	52 Week (KD)	
Company	Close (KD)	Day Δ	Day % Δ	PBV(X)	PE(X)	DY%	Mn KD	MTD(%)	YTD (%)	Value (Mn KD)	(Mn Shrs)	(%)	(%)	High	Low
Agility Public Warehousing	0.667	0.013	1.99%	1.16	14.71	2.7%	1,276	7%	-6%	2.24	3.40	7.9%	4.2%	0.748	0.357
Human Soft Holding	2.819	-0.039	-1.36%	4.26	9.56	6.5%	343	12%	-6%	0.29	0.10	44.6%	30.3%	3.470	1.944
ALAFCO Aviation Lease and Finance	0.168	0.001	0.60%	0.50	9.04	6.0%	160	6%	-39%	0.51	3.08	5.5%	1.4%	0.278	0.138
Kuwait Cement	0.206	-0.001	-0.48%	0.70	36.56	7.2%	147	18%	-16%	0.26	1.27	1.9%	1.3%	0.270	0.144
Gulf Cable and Electrical Industries	0.690	0.013	1.92%	0.83	34.22	4.0%	145	7%	41%	1.22	1.77	2.4%	2.2%	0.742	0.390
Integrated Holding	0.383	0.003	0.79%	1.23	10.67	10.4%	84	9%	-30%	0.06	0.16	11.5%	8.5%	0.600	0.342
Kuwait Portland Cement	0.775	0.007	0.91%	1.04	10.24	12.7%	78	5%	-22%	0.04	0.05	10.2%	8.2%	1.200	0.683
Educational Holding Group	0.307	-0.001	-0.32%	1.78	9.72	4.9%	75	0%	-31%	0.00	0.00	18.3%	16.7%	0.475	0.228
United Projects for Aviation Services	0.465	0.000	0.00%	0.98	7.96	4.5%	74	0%	-9%	0.00	0.00	12.3%	7.8%	0.512	0.367
Heavy Engineering Industries and Shipbuilding	0.374	0.001	0.27%	1.08	6.01	7.8%	67	2%	-8%	0.07	0.19	18.0%	5.9%	0.419	0.298
National Industries	0.156	0.000	0.00%	0.65	12.71	6.3%	55	-5%	-5%	0.00	0.00	5.1%	3.8%	0.173	0.143
ACICO Industries	0.104	-0.001	-0.95%	0.33	13.54	4.7%	34	10%	-22%	0.01	0.07	2.5%	0.6%	0.139	0.081
Kuwait Company for Process Plant Constructi	0.313	-0.002	-0.63%	1.24	6.70	5.7%	33	1%	30%	0.02	0.06	18.5%	7.7%	0.337	0.175
Ras Al Khaimah for White Cement and Constr	0.065	0.000	0.00%	0.51	19.94	8.4%	33	0%	0%	0.00	0.00	2.6%	2.0%	0.080	0.055
Gulf Cement	0.036	0.001	2.90%	0.35	(12.95)	11.7%	29	18%	-35%	0.00	0.08	-2.7%	-2.2%	0.060	0.029
Combined Group Contracting	0.171	-0.001	-0.58%	0.59	7.70	12.0%	28	10%	-31%	0.35	2.03	7.7%	1.2%	0.251	0.138
Sharjah Cement and Industrial Development	0.042	0.000	0.00%	0.21	25.32	12.4%	26	0%	0%	0.00	0.00	0.8%	0.6%	0.064	0.042
KGL Logistics	0.027	0.000	0.00%	0.20	4.45	0.1%	21	10%	-27%	0.00	0.00	4.6%	2.9%	0.043	0.023
Shuaiba Industrial	0.130	0.000	0.00%	0.72	40.15	7.6%	13	5%	-16%	0.00	0.00	1.8%	1.4%	0.180	0.122
Kuwait and Gulf Link Transport	0.045	0.001	1.58%	0.19	13.61	0.0%	12	0%	-32%	0.03	0.59	1.4%	0.4%	0.077	0.042
Fujairah Cement Industries	0.036	0.002	4.41%	0.15	17.22	11.8%	13	13%	-21%	0.01	0.19	0.8%	0.4%	0.052	0.029
National Cleaning	0.056	0.000	0.36%	0.33	7.50	9.0%	12	8%	-19%	0.03	0.47	4.4%	1.5%	0.088	0.047
Hilal Cement	0.109	0.000	0.00%	0.95	(8.96)	13.8%	11	-5%	9%	0.00	0.00	-10.6%	-6.2%	0.126	0.063
Specialities Group Holding	0.065	-0.001	-1.82%	0.35	7.71	0.0%	10	8%	-15%	0.05	0.78	4.5%	3.5%	0.078	0.050
Mubarrad Holding	0.063	0.002	3.64%	0.50	10.11	7.5%	10	13%	-29%	0.11	1.71	4.9%	4.1%	0.089	0.049
National Ranges	0.014	0.000	1.44%	0.26	(1.03)	0.0%	4	-11%	42%	0.09	6.03	-24.9%	-5.3%	0.018	0.007
Metal and Recycling	0.041	0.000	0.00%	0.34	(1.73)	0.0%	4	-6%	-18%	0.00	0.00	-19.7%	-10.1%	0.070	0.020
Salbookh Trading	0.035	0.000	0.00%	0.48	(2.05)	0.0%	4	24%	-32%	0.00	0.12	-23.2%	-15.9%	0.051	0.026
Equipment Holding	0.017	0.000	-0.58%	0.34	(196.31)	0.0%	2	11%	-25%	0.01	0.44	-0.2%	-0.1%	0.024	0.013
<b>Total Industrials - 29 Companies</b>				<b>0.89</b>	<b>13.36</b>	<b>5.0%</b>	<b>2,803</b>			<b>5.39</b>	<b>22.61</b>	<b>6.67%</b>	<b>5.05%</b>		



# DAILY MARKET COVERAGE REPORT

## NIC MENA SECURITIES - RESEARCH AND STUDIES DEP



<b>Insurance</b>	Price			Valuation Multiples			MKT Cap	Price Performance		Trading Indicators		ROE	ROA	52 Week (KD)	
Company	Close (KD)	Day Δ	Day % Δ	PBV(X)	PE(X)	DY%	Mn KD	MTD(%)	YTD (%)	Value (Mn KD)	(Mn Shrs)	(%)	(%)	High	Low
Gulf Insurance Group	0.615	0.000	0.00%	1.05	8.58	6.0%	115	0%	-7%	0.00	0.00	12.3%	1.7%	0.680	0.550
Al Ahleia Insurance	0.415	0.000	0.00%	0.78	8.36	8.1%	86	9%	2%	0.02	0.05	9.4%	3.3%	0.445	0.367
Kuwait Insurance	0.355	-0.015	-4.05%	0.58	6.88	6.7%	66	1%	8%	0.00	0.00	8.5%	4.6%	0.387	0.300
Kuwait Reinsurance	0.211	0.000	0.00%	0.80	9.03	2.1%	43	8%	53%	0.00	0.00	8.9%	3.2%	0.211	0.126
Bahrain Kuwait Insurance	0.200	0.000	0.00%	0.93	12.87	6.1%	28	0%	0%	0.00	0.00	7.2%	1.1%	0.200	0.200
Warba Insurance	0.075	0.000	0.00%	0.33	10.65	0.0%	12	-5%	24%	0.00	0.00	3.1%	1.0%	0.094	0.051
First Takaful Insurance	0.040	0.000	0.00%	0.48	5.03	0.0%	4	-1%	4%	0.00	0.00	9.6%	5.9%	0.056	0.031
Wethaq Takaful Insurance	0.023	0.000	0.00%	0.21	(29.61)	0.0%	3	-2%	-6%	0.01	0.28	-0.7%	-0.7%	0.035	0.018
<b>Total Insurance - 8 Companies</b>				<b>0.75</b>	<b>8.48</b>	<b>5.9%</b>	<b>356</b>			<b>0.03</b>	<b>0.34</b>	<b>8.86%</b>	<b>3.00%</b>		

<b>Oil and Gas</b>	Price			Valuation Multiples			MKT Cap	Price Performance		Trading Indicators		ROE	ROA	52 Week (KD)	
Company	Close (KD)	Day Δ	Day % Δ	PBV(X)	PE(X)	DY%	Mn KD	MTD(%)	YTD (%)	Value (Mn KD)	(Mn Shrs)	(%)	(%)	High	Low
National Petroleum Services	1.100	0.000	0.00%	2.62	9.38	6.4%	107	10%	-6%	0.00	0.00	27.9%	23.6%	1.389	0.903
Independent Petroleum Group	0.430	0.000	0.00%	0.79	11.72	7.0%	78	-4%	-11%	0.00	0.00	6.8%	2.2%	0.497	0.375
Burgan for Well Drilling Trading and Maintenanc	0.076	-0.002	-2.56%	0.28	7.72	0.0%	17	11%	-5%	0.00	0.00	3.6%	1.1%	0.098	0.060
Energy House Holding	0.021	-0.001	-5.00%	0.65	(2.87)	0.0%	16	10%	-4%	0.00	0.18	-22.5%	-17.0%	0.036	0.014
Gulf Petroleum Investment	0.020	0.000	1.03%	0.22	(6.35)	0.0%	9	2%	-2%	0.42	21.28	-3.4%	-2.3%	0.023	0.012
Senergy Holding	0.018	-0.001	-4.76%	0.36	(0.75)	0.0%	4	17%	-14%	0.00	0.11	-47.9%	-30.4%	0.027	0.014
<b>Total Oil and Gas - 6 Companies</b>				<b>0.83</b>	<b>26.72</b>	<b>5.3%</b>	<b>230</b>			<b>0.43</b>	<b>21.57</b>	<b>3.10%</b>	<b>2.18%</b>		

<b>Real estate</b>	Price			Valuation Multiples			MKT Cap	Price Performance		Trading Indicators		ROE	ROA	52 Week (KD)	
Company	Close (KD)	Day Δ	Day % Δ	PBV(X)	PE(X)	DY%	Mn KD	MTD(%)	YTD (%)	Value (Mn KD)	(Mn Shrs)	(%)	(%)	High	Low
Mabane Co.	0.760	0.031	4.25%	1.78	14.89	1.4%	840	19%	-11%	1.69	2.23	11.9%	5.8%	0.877	0.434
Salhia Real Estate	0.394	0.001	0.25%	1.19	9.05	5.1%	195	-1%	-6%	0.21	0.53	13.2%	5.8%	0.460	0.328
Commercial Real Estate	0.103	-0.002	-1.90%	0.63	12.76	5.6%	186	10%	12%	0.04	0.39	5.0%	2.7%	0.111	0.083
National Real Estate	0.076	0.003	3.67%	0.42	10.04	0.0%	115	9%	-12%	0.31	4.19	4.2%	2.4%	0.090	0.058
Tamdeen Real Estate	0.255	0.004	1.59%	0.37	12.44	4.0%	103	2%	-21%	0.00	0.00	3.0%	2.2%	0.343	0.241
Kuwait Real Estate	0.099	-0.001	-0.60%	0.69	12.58	0.4%	89	5%	-7%	0.08	0.86	5.5%	2.2%	0.115	0.070
United Real Estate	0.051	0.001	2.62%	0.29	(7.59)	0.0%	55	2%	-17%	0.00	0.03	-3.9%	-1.2%	0.063	0.045
First Dubai for Real Estate Development	0.043	-0.001	-1.16%	0.57	46.61	0.9%	42	11%	19%	0.15	3.57	1.2%	1.0%	0.055	0.027
Al Mazaya Holding	0.056	0.001	1.08%	0.44	(4.00)	0.1%	35	10%	-5%	0.10	1.73	-11.0%	-3.8%	0.067	0.047
Ajial Real Estate Entertainment	0.149	0.004	2.76%	0.23	14.40	0.0%	29	13%	-14%	0.00	0.03	1.6%	1.4%	0.213	0.115
Injazzat Real Estate Development	0.075	0.000	-0.27%	0.48	(3.60)	9.2%	25	1%	-6%	0.00	0.01	-13.4%	-7.0%	0.091	0.061

# DAILY MARKET COVERAGE REPORT

## NIC MENA SECURITIES - RESEARCH AND STUDIES DEP



Real estate Company	Price			Valuation Multiples			MKT Cap	Price Performance		Trading Indicators		ROE	ROA	52 Week (KD)	
	Close (KD)	Day Δ	Day % Δ	PBV(X)	PE(X)	DY%	Mn KD	MTD(%)	YTD (%)	Value (Mn KD)	(Mn Shrs)	(%)	(%)	High	Low
Aayan Real Estate	0.060	0.000	0.67%	0.35	11.82	7.9%	25	17%	-18%	0.05	0.78	3.0%	1.9%	0.080	0.048
Ream Real Estate	0.204	0.000	0.00%	1.56	(8.21)	1.1%	22	0%	132%	0.00	0.00	-19.0%	-10.1%	0.204	0.060
Arkan Al Kuwait Real Estate	0.086	0.000	0.00%	0.61	9.26	9.1%	21	2%	-4%	0.00	0.00	6.6%	3.5%	0.100	0.076
Al Argan International Real Estate	0.093	0.000	0.00%	0.27	30.01	5.3%	24	6%	-12%	0.00	0.00	0.9%	0.3%	0.141	0.060
Al-Enmaa Real Estate	0.051	0.005	10.39%	0.51	13.48	0.0%	23	17%	-19%	0.74	14.80	3.8%	2.4%	0.079	0.037
Munshaat Real Estate Projects	0.070	0.005	8.36%	0.48	25.80	3.0%	23	40%	-5%	0.16	2.33	1.8%	0.7%	0.090	0.045
Dalqan Real Estate	0.318	0.000	0.00%	2.91	58.98	0.0%	19	0%	0%	0.00	0.00	4.9%	4.9%	0.318	0.318
Kuwait Business Town Real Estate	0.030	0.000	1.33%	0.28	7.76	0.2%	19	27%	-31%	0.08	2.64	3.6%	2.7%	0.046	0.022
Sokouk Holding	0.028	0.001	4.10%	0.34	(4.66)	0.0%	16	19%	-22%	1.34	48.14	-7.4%	-4.7%	0.040	0.022
Tijara and Realestate Investment	0.041	0.003	8.85%	0.38	10.68	4.8%	15	-12%	-26%	0.00	0.09	3.6%	1.9%	0.055	0.034
Dar Al Thuraya Real Estate	0.077	-0.013	-14.62%	0.73	20.17	0.0%	11	-36%	17%	0.00	0.03	3.6%	3.6%	0.190	0.040
Aqar Real Estate Investments	0.060	0.000	0.00%	0.43	5.01	8.3%	13	-8%	-25%	0.00	0.00	8.7%	7.3%	0.089	0.058
Al-Arabiya Real Estate	0.027	0.000	1.52%	0.23	8.10	2.3%	13	16%	-9%	0.04	1.58	2.9%	1.1%	0.033	0.020
Mashaer Holding	0.060	0.001	0.84%	0.46	6.46	0.0%	11	10%	-23%	0.01	0.21	7.1%	5.0%	0.086	0.048
Osos Holding Group	0.090	-0.001	-1.10%	0.72	6.78	10.5%	9	-5%	-10%	0.00	0.01	10.5%	7.0%	0.118	0.083
Investors Holding Group	0.016	0.001	5.84%	0.82	(0.77)	0.0%	10	23%	106%	2.57	150.27	-106.5%	-57.2%	0.032	0.007
Abyaar Real Estate Development	0.007	0.000	-1.37%	0.21	(0.51)	0.0%	8	-1%	-8%	0.02	2.68	-40.9%	-12.4%	0.014	0.005
Al Massaleh Real Estate	0.033	-0.001	-2.94%	0.37	(4.60)	0.0%	8	13%	-11%	0.01	0.16	-8.1%	-1.9%	0.040	0.026
Kuwait Remal Real Estate	0.021	0.001	3.40%	0.32	(2.93)	0.0%	7	47%	-13%	0.02	0.94	-11.0%	-3.9%	0.027	0.013
Kuwait Real Estate Holding	0.026	0.000	-0.77%	0.04	0.69	6.9%	5	2%	-9%	0.00	0.16	5.5%	2.2%	0.034	0.022
Taameer Real Estate Investment	0.020	0.000	-1.51%	0.29	(4.15)	0.0%	5	4%	-26%	0.04	2.09	-7.0%	-4.5%	0.034	0.013
Real Estate Trade Centers	0.031	0.002	6.55%	0.17	176.55	0.0%	4	22%	33%	0.00	0.06	0.1%	0.1%	0.050	0.018
Sanam Real Estate	0.029	-0.001	-3.39%	0.36	38.60	0.0%	3	-5%	-29%	0.00	0.08	0.9%	0.9%	0.043	0.027
Mena Real Estate	0.028	0.000	0.00%	0.19	(62.40)	0.0%	4	15%	-32%	0.07	2.54	-0.3%	-0.2%	0.043	0.021
Al Masaken International Real Estate Develop	0.031	-0.002	-4.85%	0.35	37.93	0.5%	3	0%	-29%	0.00	0.00	0.9%	0.4%	0.074	0.026
Ajwan Gulf Real Estate	0.011	0.000	0.00%	0.19	(7.68)	0.0%	2	0%	-29%	0.00	0.00	-2.5%	-2.2%	0.016	0.009
Effect Real Estate	0.021	0.000	0.00%	0.29	(8.85)	4.9%	2	0%	0%	0.00	0.00	-3.3%	-3.2%	0.021	0.021
Al Mudon International Real Estate	0.016	0.000	0.00%	0.12	(8.22)	0.0%	2	0%	-35%	0.00	0.00	-1.5%	-1.4%	0.029	0.015
<b>Total Real estate - 39 Companies</b>				<b>0.67</b>	<b>23.87</b>	<b>2.4%</b>	<b>2,039</b>			<b>7.76</b>	<b>243.17</b>	<b>2.79%</b>	<b>2.96%</b>		

# DAILY MARKET COVERAGE REPORT

NIC MENA SECURITIES - RESEARCH AND STUDIES DEP



Technology	Price			Valuation Multiples			MKT Cap	Price Performance		Trading Indicators		ROE	ROA	52 Week (KD)	
	Company	Close (KD)	Day Δ	Day % Δ	PBV(X)	PE(X)		DY%	Mn KD	MTD(%)	YTD (%)			Value (Mn KD)	(Mn Shrs)
Automated Systems	0.072	0.003	4.50%	0.57	(69.84)	5.6%	7	5%	2%	0.01	0.15	-0.8%	-0.7%	0.086	0.051
<b>Total Technology - 1 Companies</b>				<b>0.57</b>	<b>(69.84)</b>	<b>5.6%</b>	<b>7</b>			<b>0.01</b>	<b>0.15</b>	<b>-0.81%</b>	<b>-0.73%</b>		

Telecom	Price			Valuation Multiples			MKT Cap	Price Performance		Trading Indicators		ROE	ROA	52 Week (KD)	
	Company	Close (KD)	Day Δ	Day % Δ	PBV(X)	PE(X)		DY%	Mn KD	MTD(%)	YTD (%)			Value (Mn KD)	(Mn Shrs)
Mobile Telecommunications	0.583	-0.001	-0.17%	1.94	11.63	5.3%	2,523	-1%	-3%	2.75	4.71	16.7%	4.6%	0.604	0.407
Kuwait Telecommunications	0.840	0.000	0.00%	1.95	9.62	4.2%	419	-1%	7%	0.02	0.02	20.2%	11.1%	0.870	0.680
National Mobile Telecommunications	0.615	-0.001	-0.16%	0.54	10.23	10.5%	308	6%	-26%	0.10	0.17	5.3%	2.4%	0.835	0.550
AAN Digital Services	0.012	0.000	0.83%	0.36	39.79	0.0%	11	18%	-9%	0.21	16.81	0.9%	0.7%	0.021	0.009
Hayat Communications	0.064	-0.001	-1.23%	0.55	27.12	0.0%	6	-22%	-15%	0.00	0.00	2.0%	0.8%	0.098	0.030
<b>Telecom - 5 Companies</b>				<b>1.54</b>	<b>11.22</b>	<b>5.7%</b>	<b>3,266</b>			<b>3.08</b>	<b>21.71</b>	<b>13.70%</b>	<b>7.86%</b>		

Utilities	Price			Valuation Multiples			MKT Cap	Price Performance		Trading Indicators		ROE	ROA	52 Week (KD)	
	Company	Close (KD)	Day Δ	Day % Δ	PBV(X)	PE(X)		DY%	Mn KD	MTD(%)	YTD (%)			Value (Mn KD)	(Mn Shrs)
Shamal Az-Zour Al-Oula Power & Water	0.335	-0.003	-0.89%	4.81	29.96	0.0%	369	5%	0%	2.10	6.24	16.1%	2.3%	0.500	0.297
<b>Total Utilities - 1 Companies</b>				<b>4.81</b>	<b>29.96</b>	<b>0.0%</b>	<b>369</b>			<b>2.10</b>	<b>6.24</b>	<b>16.06%</b>	<b>2.26%</b>		

<b>Total Market 173 Companies</b>				<b>1.28</b>	<b>15.49</b>	<b>3.80%</b>	<b>32,069</b>			<b>58.01</b>	<b>526.03</b>	<b>8.26%</b>	<b>2.76%</b>		
-----------------------------------	--	--	--	-------------	--------------	--------------	---------------	--	--	--------------	---------------	--------------	--------------	--	--

## End of Report

The information contained in this document is proprietary to NIC and is for use only by the persons to whom it is issued. This document is confidential and may not be distributed either in part or in whole without the express agreement of NIC. It is intended solely for the use of the individual or entity to whom it is addressed and others authorized to receive it.

Note : ROE and ROA is calculated based on LTM net profit & shareholders' equity and LTM Operating Profits & Total Assets

Sources : National Investments Company Research and Studies Departments



شركة الاستثمار الوطنية  
NATIONAL INVESTMENTS COMPANY

Sharq, Al Mutanabi Street, Khaleejia Tower | P.O. Box 25667, Safat 13117, Kuwait

T.: +965 2226 6666 | Fax: +965 2226 6793 | [www.nic.com.kw](http://www.nic.com.kw)