

شركة الاستثمارات الوطنية  
NATIONAL INVESTMENTS COMPANY

**Bursa Kuwait – Daily Market Report**  
**MENA Securities – Research & Studies Dep.**  
**Thursday, August 13, 2020**

# DAILY MARKET COVERAGE REPORT

NIC MENA SECURITIES - RESEARCH AND STUDIES DEP



Index	Close	DTD Chg Net	DTD (%)	YTD (%)	52W High	52W Low	MKT CAP Bn (KD)	PBV (X)	PE (X)	DY (%)
All Share Index	5,126.09	-26.17	-0.51%	-18.2%	6,416.43	4,339.58	29.17	1.13	14.24	4.17%
Premier Index	5,652.91	-29.86	-0.53%	-18.7%	7,172.32	4,498.65	21.46	1.56	13.07	3.89%
Main Index	4,083.82	-18.81	-0.46%	-16.8%	4,932.47	3,965.63	7.70	0.64	18.93	4.95%

Index	Value Mn(KD)	Volume (Mn share)
All Share Index	23.81	134.89
Premier Index	19.44	52.35
Main Index	4.37	82.54

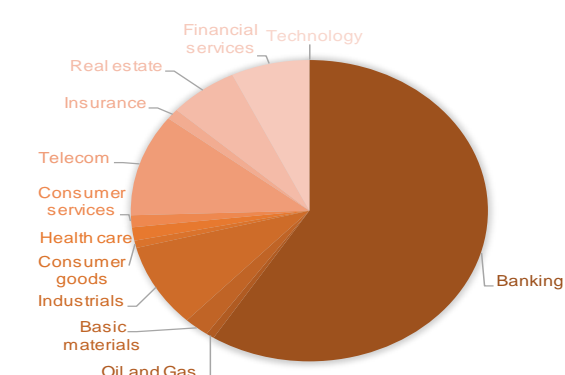
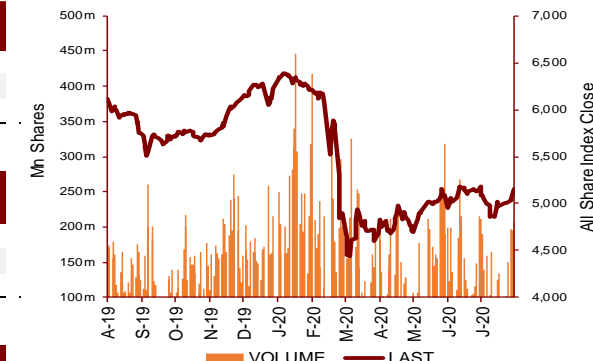
Market Breadth	UP	Down	No Chg
All Share Index	33	71	68
Premier Index	5	13	0
Main Index	28	58	68

Today's Top 5 Gainer %	Close KD	Value KD	DTD (%)
Hayat Communications Co KSCP	0.050	1,292	11.33%
Osos Holding Group Co KSCP	0.095	131	8.20%
Fujairah Cement Industries Co	0.033	1	6.21%
UniCap Investment and Finance	0.038	1,793	5.56%
Sultan Center Food Products Co	0.058	21,820	5.45%

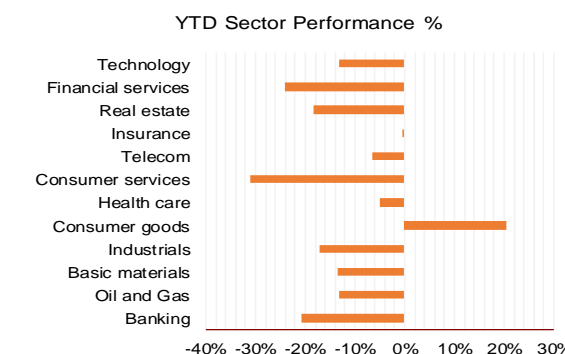
Today's Top 5 Loser %	Close KD	Value KD	DTD (%)
First Takaful Insura	0.042	3,834	-10.85%
Gulf Petroleum Inves	0.018	216,535	-7.73%
Warba Capital Holdin	0.051	210	-5.00%
National Petroleum S	1.045	627	-5.00%
Amwal International	0.036	18	-5.00%

Today's Top 5 by Value	Close KD	DTD Chg	Trade Val Mn(KD)
Kuwait Finance House KSC	0.614	-0.49%	5.53
Ahli United Bank BSC	0.202	-0.98%	2.98
Mobile Telecommunications Comp	0.574	0.35%	2.20
National Bank of Kuwait SAKP	0.814	-0.61%	1.64
Agility Public Warehousing Co	0.641	-1.08%	1.15

Top 5 by Volume	Close KD	DTD Chg	Trade Vol Mn(Shrs)
Ahli United Bank BSC	0.202	-0.98%	14.71
Gulf Petroleum Inves	0.018	-7.73%	11.87
Kuwait Finance House	0.614	-0.49%	8.99
AAN Digital Services	0.010	-1.92%	8.79
Ektitab Holding Co	0.013	-2.34%	6.59



Sector	Close	DTD Chg Net	DTD (%)	YTD (%)	52W High	52W Low	MKT CAP Bn (KD)	PBV (X)	PE (X)	DY (%)
Banking	1,177.10	-7.170	-0.61%	-20.6%	1,536.8	986.4	17.21	1.45	14.34	3.7%
Oil and Gas	1,075.57	-33.470	-3.02%	-13.1%	1,372.2	985.7	0.22	0.78	25.18	5.6%
Basic materials	786.16	-3.570	-0.45%	-13.4%	1,054.0	561.7	0.66	0.95	14.47	7.6%
Industrials	768.19	-4.720	-0.61%	-17.2%	937.5	602.9	2.62	0.83	12.50	5.3%
Consumer goods	766.77	-14.570	-1.86%	20.3%	783.1	548.6	0.23	1.52	92.93	2.2%
Health care	839.19	0.000	0.00%	-5.1%	931.0	815.0	0.42	4.24	49.21	1.0%
Consumer services	738.93	2.260	0.31%	-31.1%	1,083.1	674.8	0.37	0.85	35.50	4.7%
Telecom	1,045.71	2.260	0.22%	-6.4%	1,116.7	802.2	3.20	1.51	11.01	5.8%
Insurance	951.70	-10.850	-1.13%	-0.2%	988.8	901.0	0.34	0.71	7.98	6.2%
Real estate	865.98	-1.640	-0.19%	-18.2%	1,083.4	763.2	1.82	0.60	21.33	2.7%
Financial services	821.92	-5.800	-0.70%	-24.0%	1,097.0	801.4	2.07	0.60	14.26	5.1%
Technology	447.41	0.000	0.00%	-13.1%	625.7	371.0	0.01	0.48	-59.65	6.5%
							29.17			



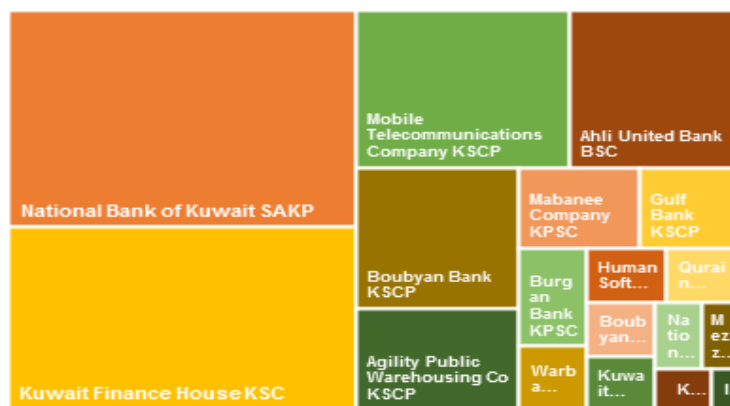
# DAILY MARKET COVERAGE REPORT

## NIC MENA SECURITIES - RESEARCH AND STUDIES DEP

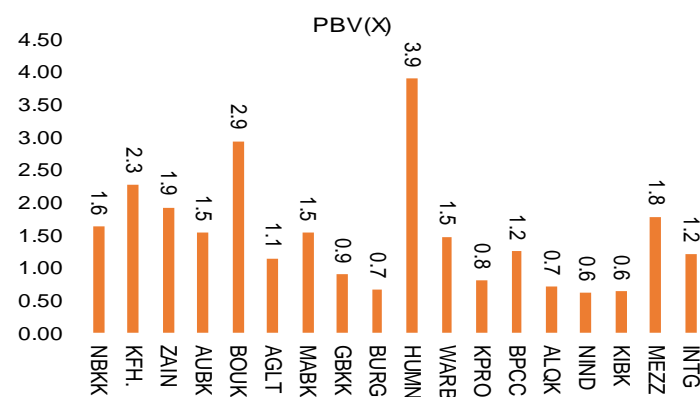


Premier Market	Price			Valuation Multiples			MKT Cap	Price Performance		Trading Indicators		ROE	ROA	52 Week (KD)	
	Close (KD)	Day Δ	Day % Δ	PBV(X)	PE(X)	DY%	Mn KD	MTD(%)	YTD (%)	Value (Mn KD)	(Mn Shrs)	(%)	(%)	High	Low
National Bank of Kuwait SAKP	0.814	-0.005	-0.61%	1.61	13.78	3.9%	5,528	4%	-20%	1.64	2.01	11.7%	1.4%	1.062	0.654
Kuwait Finance House KSC	0.614	-0.003	-0.49%	2.26	18.56	2.7%	4,660	6%	-17%	5.53	8.99	12.2%	1.3%	0.761	0.473
Mobile Telecommunications Company KSCP	0.574	0.002	0.35%	1.91	11.45	5.4%	2,484	5%	-4%	2.20	3.83	16.7%	8.3%	0.604	0.407
Ahli United Bank BSC	0.202	-0.002	-0.98%	1.52	8.90	6.0%	1,950	9%	-31%	2.98	14.71	17.1%	1.8%	0.311	0.160
Boubyan Bank KSCP	0.557	-0.002	-0.36%	2.93	26.92	1.1%	1,687	5%	-9%	0.23	0.42	10.9%	1.2%	0.638	0.380
Agility Public Warehousing Co KSCP	0.641	-0.007	-1.08%	1.11	14.14	2.8%	1,227	0%	-10%	1.15	1.78	7.9%	6.5%	0.748	0.357
Mabane Company KPSC	0.649	0.001	0.15%	1.52	12.71	1.6%	717	7%	-24%	0.80	1.23	11.9%	6.1%	0.877	0.434
Gulf Bank KSCP	0.201	-0.004	-1.95%	0.88	9.17	5.0%	584	6%	-33%	1.04	5.13	9.6%	1.0%	0.317	0.180
Burgan Bank KPSC	0.188	-0.001	-0.53%	0.66	5.81	6.1%	492	5%	-38%	0.18	0.94	11.3%	1.2%	0.358	0.175
Human Soft Holding Company KSCP	2.563	0.013	0.51%	3.88	8.69	7.2%	312	-6%	-15%	0.82	0.32	44.6%	33.0%	3.470	1.944
Warba Bank KSCP	0.202	0.001	0.50%	1.46	19.24	0.0%	318	4%	-22%	0.63	3.12	7.6%	0.5%	0.279	0.164
Kuwait Projects Company Holding KSCP	0.148	-0.002	-1.33%	0.79	8.94	6.3%	268	1%	-31%	0.16	1.08	8.9%	4.0%	0.231	0.147
Boubyan Petrochemical Company KSCP	0.547	-0.009	-1.62%	1.24	23.34	9.4%	276	1%	-18%	0.13	0.23	5.3%	3.1%	0.818	0.395
Qurain Petrochemical Industries Company KS	0.285	0.002	0.71%	0.69	10.34	5.4%	292	6%	-8%	0.07	0.26	6.7%	6.1%	0.350	0.163
National Industries Group Holding KPSC	0.159	-0.003	-1.85%	0.60	4.90	6.8%	227	3%	-34%	0.44	2.75	12.3%	7.0%	0.261	0.121
Kuwait International Bank KSCP	0.170	-0.001	-0.58%	0.62	10.11	5.9%	173	2%	-35%	0.75	4.40	6.1%	0.6%	0.272	0.162
Mezzan Holding Company KSCP	0.615	-0.015	-2.38%	1.77	33.23	2.7%	187	7%	24%	0.64	1.04	5.3%	4.0%	0.639	0.428
Integrated Holding Co KSCC	0.376	-0.002	-0.53%	1.21	10.47	10.6%	83	0%	-31%	0.04	0.11	11.5%	9.6%	0.600	0.360
<b>Total</b>				<b>1.56</b>	<b>13.07</b>	<b>3.9%</b>	<b>21,464</b>			<b>19.44</b>	<b>52.35</b>	<b>11.9%</b>	<b>1.2%</b>		

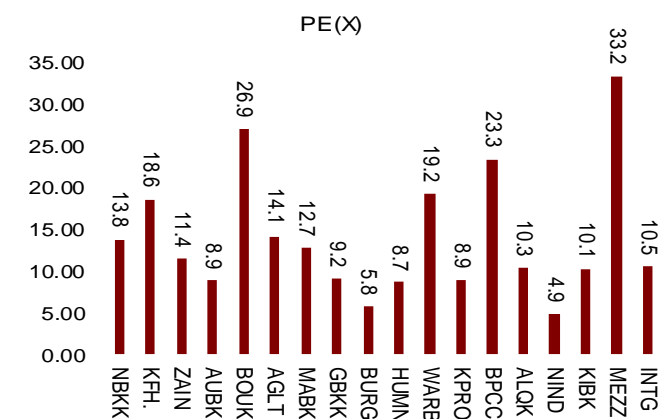
### Market Cap



### Price to Book Value



### Price to Earning Value



# DAILY MARKET COVERAGE REPORT

## NIC MENA SECURITIES - RESEARCH AND STUDIES DEP



Premier Market	Price			Valuation Multiples			MKT Cap	Price Performance		ROE	ROA
Company	Close (KD)	Day Δ	Day % Δ	PBV(X)	PE(X)	DY%	Mn KD	MTD(%)	YTD (%)	(%)	(%)
National Bank of Kuwait SAKP	0.814	-0.005	-0.61%	1.61	13.8	3.9%	5,528	4%	-20%	11.7%	1.4%
Kuwait Finance House KSC	0.614	-0.003	-0.49%	2.26	18.6	2.7%	4,660	6%	-17%	12.2%	1.3%
Mobile Telecommunications Company KSCP	0.574	0.002	0.35%	1.91	11.4	5.4%	2,484	5%	-4%	16.7%	8.3%
Ahli United Bank BSC	0.202	-0.002	-0.98%	1.52	8.9	6.0%	1,950	9%	-31%	17.1%	1.8%
Boubyan Bank KSCP	0.557	-0.002	-0.36%	2.93	26.9	1.1%	1,687	5%	-9%	10.9%	1.2%
Agility Public Warehousing Co KSCP	0.641	-0.007	-1.08%	1.11	14.1	2.8%	1,227	0%	-10%	7.9%	6.5%
Mabane Company KPSC	0.649	0.001	0.15%	1.52	12.7	1.6%	717	7%	-24%	11.9%	6.1%
Gulf Bank KSCP	0.201	-0.004	-1.95%	0.88	9.2	5.0%	584	6%	-33%	9.6%	1.0%
Burgan Bank KPSC	0.188	-0.001	-0.53%	0.66	5.8	6.1%	492	5%	-38%	11.3%	1.2%
Human Soft Holding Company KSCP	2.563	0.013	0.51%	3.88	8.7	7.2%	312	-6%	-15%	44.6%	33.0%
Warba Bank KSCP	0.202	0.001	0.50%	1.46	19.2	0.0%	318	4%	-22%	7.6%	0.5%
Kuwait Projects Company Holding KSCP	0.148	-0.002	-1.33%	0.79	8.9	6.3%	268	1%	-31%	8.9%	4.0%
Boubyan Petrochemical Company KSCP	0.547	-0.009	-1.62%	1.24	23.3	9.4%	276	1%	-18%	5.3%	3.1%
Qurain Petrochemical Industries Company KE	0.285	0.002	0.71%	0.69	10.3	5.4%	292	6%	-8%	6.7%	6.1%
National Industries Group Holding KPSC	0.159	-0.003	-1.85%	0.60	4.9	6.8%	227	3%	-34%	12.3%	7.0%
Kuwait International Bank KSCP	0.170	-0.001	-0.58%	0.62	10.1	5.9%	173	2%	-35%	6.1%	0.6%
Mezzan Holding Company KSCP	0.615	-0.015	-2.38%	1.77	33.2	2.7%	187	7%	24%	5.3%	4.0%
Integrated Holding Co KSCC	0.376	-0.002	-0.53%	1.21	10.5	10.6%	83	0%	-31%	11.5%	9.6%
<b>Total</b>							<b>21,464</b>				

Premier Market	Price			Moving Average		RSI	MKT Cap	Price Performance		52 Week (KD)	
Discription	Close (KD)	Day Δ	Day % Δ	50 Day	200 Day	14 Day	Mn KD	MTD(%)	YTD (%)	High	Low
Premier Index	5,653	-29.860	-0.53%	5,517	5,950	66	21,464	0.011	-18.74%	7,172	4,499

### Top 5 Performrs (Today's Price Change)

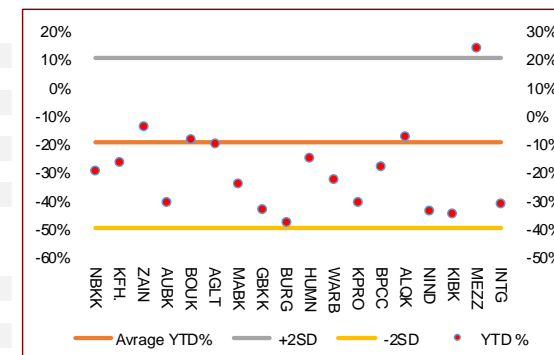
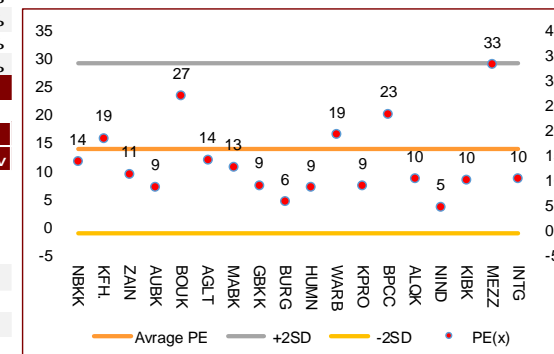
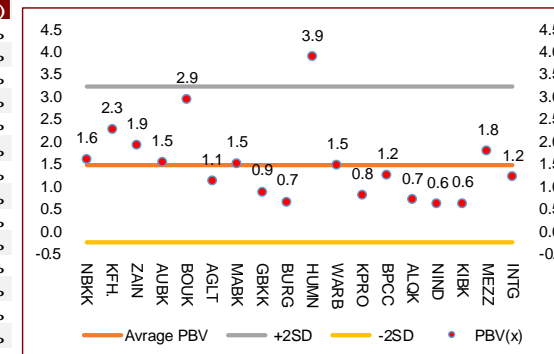
Qurain Petrochemical Industries Company KE	0.285	0.002	0.71%	0.278	0.271	39	292	6%	-8%	0.350	0.163
Human Soft Holding Company KSCP	2.563	0.013	0.51%	2.705	2.868	31	312	-6%	-15%	3.470	1.944
Warba Bank KSCP	0.202	0.001	0.50%	0.203	0.226	52	318	4%	-22%	0.279	0.164
Mobile Telecommunications Company KSCP	0.574	0.002	0.35%	0.551	0.546	70	2,484	5%	-4%	0.604	0.407
Mabane Company KPSC	0.649	0.001	0.15%	0.637	0.696	66	717	7%	-24%	0.877	0.434

### Middel Performrs (Today's Price Change)

Boubyan Bank KSCP	0.557	-0.002	-0.36%	0.523	0.536	72	1,687	5%	-9%	0.638	0.380
Kuwait Finance House KSC	0.614	-0.003	-0.49%	0.601	0.638	65	4,660	6%	-17%	0.761	0.473
Burgan Bank KPSC	0.188	-0.001	-0.53%	0.193	0.248	53	492	5%	-38%	0.358	0.175
Integrated Holding Co KSCC	0.376	-0.002	-0.53%	0.402	0.464	25	83	0%	-31%	0.600	0.360
Kuwait International Bank KSCP	0.170	-0.001	-0.58%	0.174	0.217	58	173	2%	-35%	0.272	0.162
National Bank of Kuwait SAKP	0.814	-0.005	-0.61%	0.799	0.859	65	5,528	4%	-20%	1.062	0.654
Ahli United Bank BSC	0.202	-0.002	-0.98%	0.185	0.230	71	1,950	9%	-31%	0.311	0.160
Agility Public Warehousing Co KSCP	0.641	-0.007	-1.08%	0.625	0.616	55	1,227	0%	-10%	0.748	0.357

### Bottom 5 Performrs (Today's Price Change)

Mezzan Holding Company KSCP	0.615	-0.015	-2.38%	0.590	0.543	83	187	7%	24%	0.639	0.428
Gulf Bank KSCP	0.201	-0.004	-1.95%	0.210	0.247	58	584	6%	-33%	0.317	0.180
National Industries Group Holding KPSC	0.159	-0.003	-1.85%	0.163	0.195	56	227	3%	-34%	0.261	0.121
Boubyan Petrochemical Company KSCP	0.547	-0.009	-1.62%	0.588	0.607	33	276	1%	-18%	0.818	0.395
Kuwait Projects Company Holding KSCP	0.148	-0.002	-1.33%	0.162	0.189	48	268	1%	-31%	0.231	0.147



# DAILY MARKET COVERAGE REPORT

NIC MENA SECURITIES - RESEARCH AND STUDIES DEP



Banking Sector	Price			Valuation Multiples			MKT Cap	Price Performance		Trading Indicators		ROE	ROA	52 Week (KD)	
	Company	Close (KD)	Day Δ	Day % Δ	PBV(X)	PE(X)		DY%	Mn KD	MTD(%)	YTD (%)			Value (Mn KD)	(Mn Shrs)
National Bank of Kuwait SAKP	0.814	-0.005	-0.61%	1.61	13.78	3.9%	5,528	4%	-20%	1.64	2.01	11.7%	1.4%	1.062	0.654
Kuwait Finance House KSC	0.614	-0.003	-0.49%	2.26	18.56	2.7%	4,660	6%	-17%	5.53	8.99	12.2%	1.3%	0.761	0.473
Ahli United Bank BSC	0.202	-0.002	-0.98%	1.52	8.90	6.0%	1,950	9%	-31%	2.98	14.71	17.1%	1.8%	0.311	0.160
Boubyan Bank KSCP	0.557	-0.002	-0.36%	2.93	26.92	1.1%	1,687	5%	-9%	0.23	0.42	10.9%	1.2%	0.638	0.380
Commercial Bank of Kuwait KPSC	0.514	0.000	0.00%	1.36	0.00	3.6%	992	3%	-3%	0.00	0.00	0.0%	0.0%	0.555	0.465
Gulf Bank KSCP	0.201	-0.004	-1.95%	0.88	9.17	5.0%	584	6%	-33%	1.04	5.13	9.6%	1.0%	0.317	0.180
Burgan Bank KPSC	0.188	-0.001	-0.53%	0.66	5.81	6.1%	492	5%	-38%	0.18	0.94	11.3%	1.2%	0.358	0.175
Ahli United Bank KSCP	0.254	-0.003	-1.17%	1.09	9.00	5.4%	495	3%	-22%	0.19	0.74	12.1%	1.3%	0.342	0.225
Warba Bank KSCP	0.202	0.001	0.50%	1.46	19.24	0.0%	318	4%	-22%	0.63	3.12	7.6%	0.5%	0.279	0.164
Al Ahli Bank of Kuwait KSCP	0.168	-0.002	-1.18%	0.48	9.41	8.3%	270	1%	-35%	0.16	0.94	5.1%	0.6%	0.333	0.156
Kuwait International Bank KSCP	0.170	-0.001	-0.58%	0.62	10.11	5.9%	173	2%	-35%	0.75	4.40	6.1%	0.6%	0.272	0.162
Ithmaar Holding BSC	0.022	0.000	0.00%	0.08	323.35	0.0%	65	0%	0%	0.00	0.00	0.0%	0.0%	0.022	0.022
<b>Total Banking Sector - 12 Companies</b>				<b>1.45</b>	<b>14.34</b>	<b>3.7%</b>	<b>17,214</b>			<b>13.3</b>	<b>41.4</b>	<b>10.13%</b>	<b>1.18%</b>		

Basic materials	Price			Valuation Multiples			MKT Cap	Price Performance		Trading Indicators		ROE	ROA	52 Week (KD)	
	Company	Close (KD)	Day Δ	Day % Δ	PBV(X)	PE(X)		DY%	Mn KD	MTD(%)	YTD (%)			Value (Mn KD)	(Mn Shrs)
Boubyan Petrochemical Company KSCP	0.547	-0.009	-1.62%	1.24	23.3	9.4%	276	1%	-18%	0.13	0.23	5.3%	3.1%	0.818	0.395
Qurain Petrochemical Industries Company KS	0.285	0.002	0.71%	0.69	10.3	5.4%	292	6%	-8%	0.07	0.26	6.7%	6.1%	0.350	0.163
Al Kout Industrial Projects Company KPSC	0.769	0.000	0.00%	2.50	16.2	6.5%	78	0%	-10%	0.00	0.00	15.4%	13.9%	0.850	0.769
Kuwait Foundry Company KPSC	0.227	-0.007	-2.99%	0.76	18.3	23.5%	16	0%	-32%	0.00	0.01	4.1%	2.3%	0.564	0.192
<b>Total Basic materials - 4 Companies</b>				<b>0.95</b>	<b>14.47</b>	<b>7.6%</b>	<b>662</b>			<b>0.20</b>	<b>0.50</b>	<b>6.57%</b>	<b>5.07%</b>		

Consumer goods	Price			Valuation Multiples			MKT Cap	Price Performance		Trading Indicators		ROE	ROA	52 Week (KD)	
	Company	Close (KD)	Day Δ	Day % Δ	PBV(X)	PE(X)		DY%	Mn KD	MTD(%)	YTD (%)			Value (Mn KD)	(Mn Shrs)
Mezzan Holding Company KSCP	0.615	-0.015	-2.38%	1.77	33.2	2.7%	187	7%	24%	0.64	1.04	5.3%	4.0%	0.639	0.428
Livestock Transport and Trading Co KPSC	0.195	0.001	0.52%	1.02	34.8	0.1%	41	6%	11%	0.07	0.36	2.9%	2.6%	0.200	0.152
Danah Al Safat Foodstuff Co KPSC	0.012	0.000	0.00%	0.25	-0.3	0.1%	1	0%	-25%	0.00	0.00	-84.8%	-88.3%	0.029	0.010
<b>Total Basic materials - 3 Companies</b>				<b>1.52</b>	<b>92.93</b>	<b>2.2%</b>	<b>229</b>			<b>0.71</b>	<b>1.40</b>	<b>1.64%</b>	<b>0.90%</b>		

# DAILY MARKET COVERAGE REPORT

NIC MENA SECURITIES - RESEARCH AND STUDIES DEP



Consumer services															
Company	Price			Valuation Multiples			MKT Cap Mn KD	Price Performance		Trading Indicators		ROE (%)	ROA (%)	52 Week (KD)	
	Close (KD)	Day Δ	Day % Δ	PBV(X)	PE(X)	DY%		MTD(%)	YTD (%)	Value (Mn KD)	(Mn Shrs)			High	Low
Jazeera Airways Co KSCP	0.597	0.001	0.17%	2.97	8.0	5.9%	119	-4%	-46%	0.10	0.17	37.1%	9.3%	1.110	0.372
Kuwait National Cinema Comapany KPSC	0.680	-0.020	-2.86%	0.78	7.4	7.1%	63	-9%	-35%	0.01	0.02	10.6%	8.5%	1.050	0.655
Al Soor Fuel Marketing Company KSCP	0.110	0.003	2.80%	0.67	12.8	4.5%	44	0%	-12%	0.00	0.00	5.3%	3.9%	0.129	0.096
Oula Fuel Marketing Co KSCP	0.111	0.002	1.83%	0.67	11.6	5.3%	45	1%	-13%	0.01	0.08	5.7%	3.9%	0.134	0.095
Sultan Center Food Products Company KSCP	0.058	0.003	5.45%	0.72	14.6	0.0%	33	4%	8%	0.02	0.39	4.9%	3.8%	0.060	0.036
IFA Hotels and Resorts Co KSCP	0.023	0.000	-0.85%	0.82	-0.6	0.0%	14	3%	-58%	0.00	0.11	-131.5%	-4.7%	0.063	0.021
Jiyad Holding Co KSCP	0.032	0.000	-0.94%	0.28	6.3	0.0%	11	-1%	-19%	0.00	0.08	4.5%	3.7%	0.047	0.029
Kuwait Resorts Company KPSC	0.047	-0.001	-1.26%	0.32	8.6	0.0%	9	1%	-23%	0.03	0.69	3.8%	3.8%	0.064	0.040
Future Kid Entertainment and Real Estate Co	0.085	-0.004	-4.94%	0.49	32.0	13.6%	9	1%	1%	0.00	0.00	1.5%	2.6%	0.110	0.069
Al Eid Food Company KSCP	0.088	0.002	2.33%	0.49	5.9	0.0%	9	-1%	11%	0.00	0.01	8.4%	8.4%	0.096	0.046
Alrai Media Group Co KSCP	0.037	0.000	0.00%	0.83	-2.4	0.0%	9	0%	-2%	0.00	0.00	-34.2%	-19.3%	0.049	0.029
Kuwait Hotels Co KPSC	0.090	-0.005	-4.98%	1.26	-5.2	0.0%	5	7%	-10%	0.00	0.00	-24.4%	-13.2%	0.101	0.069
Palms Agro Production Co KSCP	0.060	0.000	0.00%	0.51	-42.3	16.6%	3	0%	49%	0.00	0.00	-1.2%	0.2%	0.060	0.025
Kuwait Cable Vision Company KPSC	0.014	0.000	0.00%	0.52	-11.6	0.0%	1	0%	0%	0.00	0.00	-4.5%	-3.0%	0.027	0.012
<b>Total Consumer services - 14 Companies</b>				<b>0.85</b>	<b>35.50</b>	<b>4.7%</b>	<b>374</b>			<b>0.18</b>	<b>1.56</b>	<b>2.38%</b>	<b>2.72%</b>		

Financial services															
Company	Price			Valuation Multiples			MKT Cap Mn KD	Price Performance		Trading Indicators		ROE (%)	ROA (%)	52 Week (KD)	
	Close (KD)	Day Δ	Day % Δ	PBV(X)	PE(X)	DY%		MTD(%)	YTD (%)	Value (Mn KD)	(Mn Shrs)			High	Low
Egypt Kuwait Holding Co SAE	0.340	0.000	0.00%	2.01	11.5	5.8%	348	-9%	-24%	0.00	0.00	17.6%	12.6%	0.500	0.318
Kuwait Projects Company Holding KSCP	0.148	-0.002	-1.33%	0.79	8.9	6.3%	268	1%	-31%	0.16	1.08	8.9%	4.0%	0.231	0.147
National Industries Group Holding KPSC	0.159	-0.003	-1.85%	0.60	4.9	6.8%	227	3%	-34%	0.44	2.75	12.3%	7.0%	0.261	0.121
GFH Financial Group BSC	0.048	-0.001	-1.04%	0.56	7.0	5.5%	175	0%	-31%	0.02	0.51	8.0%	1.1%	0.075	0.042
Alimtiiaz Investment Group Co KSCP	0.088	0.000	-0.11%	0.42	4.6	9.1%	90	0%	-31%	0.08	0.93	9.1%	6.1%	0.141	0.071
Commercial Facilities Co SAKP	0.190	0.000	0.00%	0.59	7.3	8.9%	96	0%	-12%	0.00	0.00	8.0%	4.4%	0.235	0.179
National Investments Co KSCP	0.103	0.003	2.69%	0.45	7.7	7.9%	82	1%	-25%	0.15	1.46	5.9%	5.7%	0.155	0.080
Tamdeen Investment Co KSCP	0.239	0.000	0.00%	0.29	9.9	5.0%	82	-4%	-31%	0.00	0.00	3.0%	3.3%	0.400	0.199
Kuwait Investment Company KPSC	0.103	0.001	0.98%	0.45	3.2	9.8%	56	-4%	-31%	0.12	1.22	13.9%	7.8%	0.172	0.095
Noor Financial Investment Co KPSC	0.134	-0.003	-2.19%	0.83	6.7	3.6%	54	-1%	15%	0.10	0.78	12.5%	10.1%	0.184	0.076



# DAILY MARKET COVERAGE REPORT

## NIC MENA SECURITIES - RESEARCH AND STUDIES DEP



Financial services	Price			Valuation Multiples			MKT Cap	Price Performance		Trading Indicators		ROE	ROA	52 Week (KD)		
	Company	Close (KD)	Day Δ	Day % Δ	PBV(X)	PE(X)		DY%	Mn KD	MTD(%)	YTD (%)			Value (Mn KD)	(Mn Shrs)	(%)
Al Bareeq Holding KSCP	0.105	0.000	0.00%	1.10	21.0	0.0%	46	0%	5%	0.00	0.00	5.2%	5.1%	0.110	0.100	
Kuwait Financial Centre KPSC	0.072	-0.003	-4.00%	0.36	4.9	6.9%	34	0%	-31%	0.05	0.65	7.3%	5.1%	0.121	0.070	
Aayan Leasing and Investment Co KSCP	0.042	-0.001	-2.33%	0.49	-2.3	4.3%	34	-1%	-10%	0.08	1.83	-21.4%	-4.4%	0.066	0.032	
Arabi Group Holdings KSCP	0.198	0.000	0.00%	1.07	-19.9	0.0%	33	0%	-28%	0.00	0.00	-5.4%	3.6%	0.337	0.074	
Arzan Financial Group for Financing and Invest	0.038	-0.001	-1.80%	0.31	27.8	0.0%	30	-1%	63%	0.07	1.85	1.1%	2.3%	0.047	0.022	
Privatization Holding Co KPSC	0.040	-0.002	-4.94%	0.30	-36.4	0.0%	25	0%	-14%	0.00	0.11	-0.8%	0.8%	0.059	0.037	
Asiya Capital Investments Company KSCP	0.031	0.000	0.00%	0.33	15.9	0.2%	24	2%	-24%	0.00	0.01	2.1%	2.1%	0.041	0.029	
KAMCO Investment Co KSCP	0.068	-0.001	-1.59%	0.41	7.7	0.0%	23	-5%	-25%	0.05	0.78	5.4%	5.9%	0.111	0.060	
Kuwait and Middle East Financial Investment (	0.113	0.000	0.00%	1.84	45.1	0.0%	30	20%	26%	0.15	1.33	4.1%	4.3%	0.116	0.052	
Umm Al Qaiwain General Investment Co PSC	0.067	0.000	0.00%	0.45	12.5	5.5%	24	0%	0%	0.00	0.00	3.6%	3.3%	0.087	0.052	
Securities House KSCP	0.038	-0.001	-1.55%	0.52	-55.6	0.0%	21	-2%	-17%	0.04	1.02	-0.9%	1.4%	0.050	0.027	
Gulf Investment House KSCP	0.061	0.000	0.00%	0.69	112.8	0.0%	25	10%	-6%	0.03	0.42	0.6%	0.5%	0.078	0.038	
Coast Investment and Development Co KSCP	0.031	0.000	0.00%	0.33	31.3	0.0%	18	3%	-21%	0.00	0.10	1.1%	1.1%	0.045	0.026	
Bayan Investment Co KSCP	0.049	0.000	0.00%	0.49	-25.1	0.0%	18	-1%	27%	0.00	0.00	-1.9%	-0.9%	0.053	0.031	
First Investment Co KSCP	0.028	0.001	2.23%	0.43	-0.4	0.0%	18	-2%	-20%	0.02	0.62	-113.6%	63.0%	0.045	0.022	
Al Madar Finance and Investment Co KSCP	0.075	-0.003	-3.85%	0.68	11.2	0.0%	16	-6%	-19%	0.01	0.11	6.1%	3.0%	0.148	0.062	
Inoest BSC Public	0.058	0.000	0.00%	0.40	7.7	10.3%	17	-2%	-10%	0.00	0.00	5.2%	2.7%	0.070	0.044	
Al Manar Financing and Leasing Co KSCC	0.050	0.000	0.00%	0.45	12.9	1.0%	15	3%	-3%	0.03	0.61	3.5%	2.8%	0.060	0.037	
Osoul Investment Co KSCP	0.080	0.000	0.00%	0.57	6.4	0.0%	12	-2%	7%	0.01	0.10	9.0%	8.7%	0.121	0.059	
National International Holding Co KSCP	0.068	0.000	0.00%	0.34	7.8	4.5%	14	-1%	-12%	0.00	0.00	4.4%	4.7%	0.085	0.051	
Kuwait Finance and Investment Company KSC	0.041	-0.002	-3.72%	0.33	18.6	0.0%	13	-7%	-17%	0.00	0.01	1.8%	2.3%	0.058	0.038	
Manazel Holding Co KPSC	0.029	0.000	-1.34%	0.64	18.9	0.0%	13	1%	-25%	0.17	5.77	3.4%	1.2%	0.048	0.021	
Amar Finance and Leasing Company KSCP	0.045	0.000	0.00%	0.50	37.6	0.0%	9	-10%	18%	0.00	0.05	1.3%	1.3%	0.066	0.033	
UniCap Investment and Finance Co KSCP	0.038	0.002	5.56%	0.38	-19.0	0.0%	9	6%	-31%	0.00	0.05	-2.0%	0.3%	0.057	0.035	
Gulf North Africa Holding Co KPSC	0.055	-0.001	-1.08%	0.73	70.9	0.0%	8	2%	-11%	0.00	0.06	1.0%	2.5%	0.062	0.052	
International Financial Advisors KPSC	0.030	0.000	0.00%	0.90	-0.4	2.1%	7	2%	-44%	0.00	0.10	-222.8%	-17.0%	0.060	0.027	
Kuwait Syrian Holding Co KSCP	0.032	0.000	0.95%	0.27	-16.3	0.0%	6	-19%	1%	0.00	0.00	-1.7%	-1.1%	0.044	0.022	
Amwal International Investment Company KSC	0.036	-0.002	-5.00%	0.67	13.3	0.0%	7	-5%	20%	0.00	0.00	5.0%	6.3%	0.056	0.030	
Al Salam Group Holding Co KSCP	0.023	0.000	-0.88%	0.20	170.6	0.0%	6	11%	-23%	0.04	1.66	0.1%	0.1%	0.039	0.018	
Warba Capital Holding Co KSC	0.051	-0.003	-5.00%	0.57	-8.2	0.0%	5	-5%	-20%	0.00	0.00	-7.0%	-5.0%	0.120	0.045	
Credit Rating and Collection Company KSCP	0.035	0.000	0.00%	1.08	-23.7	0.0%	6	0%	76%	0.00	0.00	-4.6%	-4.3%	0.037	0.015	
National Consumer Holding Company KSCP	0.055	0.000	0.00%	0.61	269.6	0.0%	5	0%	0%	0.00	0.00	0.2%	0.3%	0.100	0.010	
Al Madina for Finance and Investment Co KSC	0.011	0.000	-2.78%	0.36	-2.0	0.0%	4	1%	-31%	0.01	0.82	-17.9%	-7.7%	0.019	0.009	
Ekttitab Holding Co KSCP	0.013	0.000	-2.34%	0.30	-8.8	0.0%	4	-8%	-17%	0.08	6.59	-3.4%	-3.0%	0.019	0.010	
Al Deera Holding Co KPSC	0.016	0.000	0.00%	0.71	-9.2	0.0%	3	-4%	-18%	0.00	0.00	-7.7%	-2.2%	0.022	0.011	
Al Mal Investment Company KPSC	0.009	0.000	0.00%	0.41	-0.9	0.0%	3	1%	-8%	0.01	0.88	-47.6%	-23.1%	0.016	0.008	
Gulf Franchising Holding Co KSCP	0.065	0.000	0.00%	1.01	-2.8	0.0%	3	0%	-14%	0.00	0.00	-36.2%	-10.8%	0.160	0.001	
Tamkeen Holding KSCC	0.005	0.000	0.00%	0.05	-7.2	0.0%	0	0%	0%	0.00	0.00	-0.7%	-0.7%	0.007	0.005	
<b>Total Financial services - 48 Companies</b>				<b>0.60</b>	<b>14.26</b>	<b>5.1%</b>	<b>2,065</b>				<b>1.94</b>	<b>34.23</b>	<b>4.18%</b>	<b>4.11%</b>		

# DAILY MARKET COVERAGE REPORT

## NIC MENA SECURITIES - RESEARCH AND STUDIES DEP



Health care	Price			Valuation Multiples			MKT Cap	Price Performance		Trading Indicators		ROE	ROA	52 Week (KD)	
Company	Close (KD)	Day Δ	Day % Δ	PBV(X)	PE(X)	DY%	Mn KD	MTD(%)	YTD (%)	Value (Mn KD)	(Mn Shrs)	(%)	(%)	High	Low
Al-Maidan Clinic for Oral Health Services Com	1.220	0.000	0.00%	7.90	47.8	0.6%	305	0%	0%	0.00	0.00	16.5%	11.6%	1.240	1.220
Advanced Technology Co KSCP	0.660	0.000	0.00%	1.72	53.7	2.3%	99	0%	-19%	0.00	0.00	3.2%	3.5%	1.000	0.580
Yiaco Medical Company KPSC	0.707	0.000	0.00%	6.06	52.7	0.0%	12	0%	0%	0.00	0.00	11.5%	3.1%	0.707	0.707
<b>Total Health care - 3 Companies</b>				<b>4.24</b>	<b>49.21</b>	<b>1.0%</b>	<b>416</b>			<b>0.00</b>	<b>0.00</b>	<b>8.61%</b>	<b>4.68%</b>		

Industrials	Price			Valuation Multiples			MKT Cap	Price Performance		Trading Indicators		ROE	ROA	52 Week (KD)	
Company	Close (KD)	Day Δ	Day % Δ	PBV(X)	PE(X)	DY%	Mn KD	MTD(%)	YTD (%)	Value (Mn KD)	(Mn Shrs)	(%)	(%)	High	Low
Agility Public Warehousing Co KSCP	0.641	-0.007	-1.08%	1.11	14.1	2.8%	1,227	0%	-10%	1.15	1.78	7.9%	6.5%	0.748	0.357
Human Soft Holding Company KSCP	2.563	0.013	0.51%	3.88	8.7	7.2%	312	-6%	-15%	0.82	0.32	44.6%	33.0%	3.470	1.944
ALAFCO Aviation Lease and Finance Compan	0.149	-0.003	-1.97%	0.44	8.0	6.7%	142	-3%	-45%	0.72	4.85	5.5%	3.7%	0.283	0.138
Kuwait Cement Co KSCP	0.166	0.001	0.61%	0.57	29.5	8.9%	118	1%	-33%	0.06	0.37	1.9%	2.3%	0.285	0.144
Gulf Cable and Electrical Industries Co KPSC	0.581	-0.004	-0.68%	0.70	28.8	4.7%	122	4%	20%	0.21	0.36	2.4%	2.7%	0.611	0.390
Integrated Holding Co KSCC	0.376	-0.002	-0.53%	1.21	10.5	10.6%	83	0%	-31%	0.04	0.11	11.5%	9.6%	0.600	0.360
Kuwait Portland Cement Co KPSC	0.733	-0.011	-1.48%	0.98	9.7	13.4%	73	4%	-25%	0.06	0.08	10.2%	8.8%	1.215	0.683
United Projects for Aviation Services Co KSCF	0.465	0.000	0.00%	0.98	8.0	4.5%	74	0%	-9%	0.00	0.00	12.3%	9.1%	0.512	0.367
Heavy Engineering Industries and Shipbuilding	0.350	0.001	0.29%	1.01	5.6	8.3%	63	0%	-14%	0.03	0.07	18.0%	7.1%	0.419	0.298
Educational Holding Group KSCP	0.290	0.000	0.00%	1.68	9.2	5.2%	71	0%	-34%	0.00	0.00	18.3%	17.8%	0.475	0.228
National Industries Company KPSC	0.159	0.000	0.00%	0.68	13.3	6.1%	57	-2%	-4%	0.00	0.01	5.1%	7.8%	0.180	0.143
ACICO Industries Company KSCP	0.095	0.000	0.00%	0.31	12.4	5.2%	31	-7%	-29%	0.01	0.06	2.5%	2.8%	0.145	0.081
Kuwait Company for Process Plant Constructi	0.277	-0.010	-3.48%	1.09	5.9	6.5%	30	-2%	15%	0.04	0.13	18.5%	8.4%	0.337	0.173
Ras Al Khaimah for White Cement and Constr	0.065	0.000	0.00%	0.51	19.9	8.4%	33	0%	0%	0.00	0.00	2.6%	4.7%	0.080	0.053
Gulf Cement Co PSC	0.038	0.002	4.44%	0.37	-13.7	11.0%	31	-1%	-32%	0.00	0.08	-2.7%	-2.0%	0.063	0.032
Combined Group Contracting Company KSCP	0.154	-0.003	-1.91%	0.53	6.9	13.3%	25	0%	-38%	0.25	1.62	7.7%	3.0%	0.264	0.150
Sharjah Cement and Industrial Development C	0.042	0.000	0.00%	0.21	25.3	12.4%	26	0%	0%	0.00	0.00	0.8%	1.2%	0.067	0.042
KGL Logistics Company KPSC	0.025	0.000	-0.40%	0.19	4.0	0.1%	19	6%	-34%	0.02	0.84	4.6%	3.7%	0.043	0.023
Fujairah Cement Industries Co PSC	0.033	0.002	6.21%	0.13	15.8	12.9%	12	8%	-28%	0.00	0.00	0.8%	2.3%	0.055	0.029
Shuaiba Industrial Company KPSC	0.124	0.000	0.00%	0.70	38.5	8.0%	12	0%	-20%	0.00	0.00	1.8%	2.0%	0.180	0.122
Kuwait and Gulf Link Transport Company KPS	0.046	0.000	-0.87%	0.19	13.8	0.0%	13	-6%	-34%	0.00	0.02	1.4%	2.2%	0.081	0.042
National Cleaning Co KSCP	0.052	0.000	0.00%	0.33	7.6	9.0%	12	0%	-25%	0.00	0.00	4.4%	2.3%	0.088	0.047
Mubarrad Holding Co KSCP	0.056	-0.001	-0.89%	0.44	9.0	8.4%	9	-1%	-37%	0.01	0.25	4.9%	5.1%	0.089	0.049
Specialities Group Holding Company KPSC	0.067	0.001	1.37%	0.33	7.2	0.0%	9	0%	-21%	0.01	0.19	4.5%	7.1%	0.086	0.055
Hilal Cement Company KSCP	0.068	0.000	0.00%	0.60	-5.6	21.9%	7	0%	-32%	0.00	0.00	-10.6%	-5.3%	0.100	0.063
National Ranges Co KPSC	0.016	0.000	-2.44%	0.29	-1.2	0.0%	4	6%	60%	0.00	0.00	-24.9%	-4.2%	0.018	0.007
Metal and Recycling Co KSCP	0.046	0.000	0.00%	0.38	-1.9	0.0%	4	0%	-9%	0.00	0.00	-19.7%	-7.2%	0.070	0.020
Salbookh Trading Co KSCP	0.029	-0.001	-4.58%	0.40	-1.7	0.0%	3	-3%	-42%	0.00	0.12	-23.2%	-15.3%	0.051	0.026
Equipment Holding Co KSCP	0.014	0.000	0.00%	0.27	-155.9	0.0%	2	0%	-38%	0.00	0.00	-0.2%	0.4%	0.024	0.013
<b>Total Industrials - 29 Companies</b>				<b>0.83</b>	<b>12.50</b>	<b>5.3%</b>	<b>2,624</b>			<b>3.43</b>	<b>11.26</b>	<b>6.67%</b>	<b>5.05%</b>		



# DAILY MARKET COVERAGE REPORT

NIC MENA SECURITIES - RESEARCH AND STUDIES DEP



Insurance	Price			Valuation Multiples			MKT Cap	Price Performance		Trading Indicators		ROE	ROA	52 Week (KD)		
	Company	Close (KD)	Day Δ	Day % Δ	PBV(X)	PE(X)		DY%	Mn KD	MTD(%)	YTD (%)			Value (Mn KD)	(Mn Shrs)	(%)
Gulf Insurance Group KSCP	0.580	-0.019	-3.17%	0.95	7.8	6.7%	104	4%	-12%	0.00	0.00	12.3%	3.0%	0.687	0.556	
Al Ahleia Insurance Co SAKP	0.400	0.000	0.00%	0.72	7.7	8.8%	79	-4%	-7%	0.00	0.00	9.4%	3.7%	0.445	0.385	
Kuwait Insurance Company SAKP	0.345	0.000	0.00%	0.57	6.7	6.9%	64	1%	5%	0.00	0.00	8.5%	4.9%	0.387	0.298	
Kuwait Reinsurance Company KSCP	0.195	0.000	0.00%	0.74	8.3	2.2%	39	4%	41%	0.00	0.00	8.9%	3.4%	0.195	0.126	
Bahrain Kuwait Insurance Co BSC	0.200	0.000	0.00%	0.93	12.9	6.1%	28	0%	0%	0.00	0.00	7.2%	0.9%	0.200	0.200	
Warba Insurance Company KSCP	0.085	0.001	0.59%	0.36	11.7	0.0%	14	7%	37%	0.00	0.00	3.1%	1.0%	0.096	0.053	
First Takaful Insurance Co KPSC	0.042	-0.005	-10.85%	0.51	5.3	0.0%	4	11%	16%	0.00	0.09	9.6%	6.3%	0.056	0.031	
Wethaq Takaful Insurance Co KCSP	0.025	0.000	1.61%	0.23	-31.9	0.0%	3	0%	1%	0.00	0.19	-0.7%	-0.7%	0.035	0.018	
<b>Total Insurance - 8 Companies</b>				<b>0.71</b>	<b>7.98</b>	<b>6.2%</b>	<b>335</b>				<b>0.01</b>	<b>0.28</b>	<b>8.86%</b>	<b>3.00%</b>		

Oil and Gas	Price			Valuation Multiples			MKT Cap	Price Performance		Trading Indicators		ROE	ROA	52 Week (KD)		
	Company	Close (KD)	Day Δ	Day % Δ	PBV(X)	PE(X)		DY%	Mn KD	MTD(%)	YTD (%)			Value (Mn KD)	(Mn Shrs)	(%)
Burgan for Well Drilling Trading and Maintenanc	0.070	0.000	0.00%	0.25	7.1	0.0%	16	0%	-13%	0.00	0.00	3.6%	3.2%	0.098	0.062	
Energy House Holding Company KSCP	0.021	-0.001	-4.59%	0.64	-2.9	0.0%	16	-5%	-9%	0.00	0.10	-22.5%	-15.6%	0.036	0.014	
Gulf Petroleum Investment Company KSCP	0.018	-0.002	-7.73%	0.20	-5.8	0.0%	8	22%	-11%	0.22	11.87	-3.4%	-2.2%	0.025	0.012	
Independent Petroleum Group KSCP	0.400	0.000	0.00%	0.74	10.9	7.5%	72	5%	-17%	0.05	0.12	6.8%	2.2%	0.497	0.375	
National Petroleum Services Company KSCP	1.045	-0.055	-5.00%	2.49	8.9	6.7%	101	-7%	-11%	0.00	0.00	27.9%	25.2%	1.389	0.903	
Senergy Holding Company KSCP	0.017	0.000	0.60%	0.34	-0.7	0.0%	3	0%	-23%	0.00	0.01	-47.9%	-28.9%	0.027	0.014	
<b>Total Oil and Gas - 6 Companies</b>				<b>0.78</b>	<b>25.18</b>	<b>5.6%</b>	<b>217</b>				<b>0.27</b>	<b>12.11</b>	<b>3.10%</b>	<b>2.18%</b>		

Real estate	Price			Valuation Multiples			MKT Cap	Price Performance		Trading Indicators		ROE	ROA	52 Week (KD)	
	Company	Close (KD)	Day Δ	Day % Δ	PBV(X)	PE(X)		DY%	Mn KD	MTD(%)	YTD (%)			Value (Mn KD)	(Mn Shrs)
Mabane Company KPSC	0.649	0.001	0.15%	1.52	12.7	1.6%	717	7%	-24%	0.80	1.23	11.9%	6.1%	0.877	0.434
Salhia Real Estate Co KSCP	0.400	-0.007	-1.72%	1.21	9.2	5.0%	198	1%	-4%	0.02	0.05	13.2%	6.2%	0.460	0.324
Commercial Real Estate Co KPSC	0.091	0.001	0.67%	0.56	11.2	6.3%	164	-3%	-1%	0.04	0.43	5.0%	3.8%	0.103	0.083
Tamdeen Real Estate Co KPSC	0.252	0.001	0.40%	0.38	12.8	3.9%	105	-3%	-21%	0.00	0.00	3.0%	2.3%	0.343	0.248
National Real Estate Co KSCP	0.072	-0.001	-1.24%	0.38	9.0	0.0%	103	0%	-21%	0.03	0.35	4.2%	2.3%	0.095	0.060
Kuwait Real Estate Company KPSC	0.083	-0.001	-0.95%	0.56	10.2	0.5%	72	2%	-21%	0.08	1.00	5.5%	5.9%	0.115	0.070
United Real Estate Company SAKP	0.048	0.000	0.00%	0.28	-7.1	0.0%	52	-3%	-22%	0.00	0.00	-3.9%	1.4%	0.065	0.045

# DAILY MARKET COVERAGE REPORT

## NIC MENA SECURITIES - RESEARCH AND STUDIES DEP



Real estate Company	Price			Valuation Multiples			MKT Cap	Price Performance		Trading Indicators		ROE	ROA	52 Week (KD)	
	Close (KD)	Day Δ	Day % Δ	PBV(X)	PE(X)	DY%	Mn KD	MTD(%)	YTD (%)	Value (Mn KD)	(Mn Shrs)	(%)	(%)	High	Low
First Dubai for Real Estate Development Co KSC	0.036	0.000	0.84%	0.48	39.6	1.1%	36	2%	1%	0.03	0.89	1.2%	2.1%	0.055	0.026
Al Mazaya Holding Company KSCP	0.051	0.000	0.00%	0.40	-3.6	0.1%	32	0%	-17%	0.01	0.26	-11.0%	-0.9%	0.067	0.047
Dar Al Thuraya Real Estate Co KPSC	0.129	0.000	0.00%	1.23	34.0	0.0%	19	-8%	84%	0.00	0.00	3.6%	-1.2%	0.190	0.040
Injazzat Real Estate Development Company KSC	0.079	0.002	2.60%	0.51	-3.8	8.7%	26	-1%	-1%	0.00	0.01	-13.4%	-6.9%	0.091	0.061
Ajjal Real Estate Entertainment Co KSCP	0.133	0.002	1.53%	0.20	12.2	0.0%	25	-1%	-27%	0.00	0.01	1.6%	1.9%	0.224	0.121
Arkan Al Kuwait Real Estate Company KSCP	0.083	-0.001	-0.60%	0.59	9.0	9.4%	21	-1%	-7%	0.00	0.05	6.6%	7.1%	0.100	0.076
Al Argan International Real Estate Co KSCP	0.090	0.000	0.00%	0.26	29.2	5.4%	23	13%	-14%	0.00	0.00	0.9%	2.8%	0.143	0.060
Al-Enmaa Real Estate Company KSCP	0.039	0.000	0.00%	0.39	10.2	0.0%	17	3%	-38%	0.00	0.12	3.8%	2.5%	0.079	0.037
Aayan Real Estate Company KSCP	0.050	-0.001	-2.72%	0.28	9.3	10.0%	20	-4%	-32%	0.00	0.03	3.0%	2.8%	0.080	0.048
Dalqan Real Estate Company KSCP	0.350	0.000	0.00%	2.91	59.0	0.0%	19	0%	0%	0.00	0.00	4.9%	5.1%	0.350	0.350
Kuwait Business Town Real Estate Co KSCP	0.029	0.000	-0.34%	0.26	7.4	0.3%	18	4%	-34%	0.09	3.04	3.6%	2.8%	0.046	0.027
Tijara and Realestate Investment Company KSC	0.039	-0.002	-4.88%	0.37	10.3	5.0%	14	-5%	-22%	0.00	0.01	3.6%	5.0%	0.055	0.034
Munshaat Real Estate Projects Co KSCP	0.048	0.000	0.00%	0.33	17.7	4.4%	15	-8%	-35%	0.00	0.00	1.8%	-1.2%	0.086	0.047
Aqar Real Estate Investments Co KSCP	0.075	0.000	0.00%	0.54	6.3	6.6%	16	-3%	-6%	0.00	0.00	8.7%	9.3%	0.089	0.062
Sokouk Holding Co KSCP	0.023	-0.001	-3.36%	0.28	-3.8	0.0%	13	-4%	-35%	0.04	1.55	-7.4%	4.1%	0.040	0.022
Al-Arabiya Real Estate Co KSCP	0.023	-0.001	-3.85%	0.20	6.8	2.8%	11	0%	-24%	0.01	0.22	2.9%	12.0%	0.033	0.020
Mashaer Holding Co KSCP	0.058	0.000	0.00%	0.44	6.2	0.0%	10	-3%	-25%	0.00	0.00	7.1%	5.5%	0.086	0.048
Osos Holding Group Co KSCP	0.095	0.007	8.20%	0.76	7.2	10.0%	10	-3%	-5%	0.00	0.00	10.5%	7.3%	0.118	0.088
Abyaar Real Estate Development Company KSC	0.007	0.000	0.00%	0.19	-0.5	0.0%	7	-3%	-15%	0.01	2.06	-40.9%	-12.3%	0.015	0.005
Ream Real Estate Company KSCP	0.094	0.000	0.00%	0.72	-3.8	2.3%	10	46%	7%	0.00	0.00	-19.0%	-10.1%	0.140	0.060
Investors Holding Group Company KSCP	0.013	0.000	-0.77%	0.65	-0.6	0.0%	8	-4%	58%	0.07	5.49	-106.5%	0.0%	0.017	0.007
Al Massaleh Real Estate Co KSCP	0.029	0.000	1.05%	0.32	-4.0	0.0%	7	-3%	-26%	0.00	0.00	-8.1%	-2.3%	0.040	0.026
Kuwait Real Estate Holding Co KPSC	0.026	0.000	0.00%	0.04	0.7	6.9%	5	-5%	-10%	0.00	0.00	5.5%	2.3%	0.034	0.023
Kuwait Remal Real Estate Co KPSC	0.015	0.000	0.67%	0.23	-2.1	0.0%	5	7%	-39%	0.01	0.39	-11.0%	3.1%	0.029	0.013
Real Estate Trade Centers Company KPSC	0.026	-0.001	-2.26%	0.14	148.8	0.0%	3	0%	12%	0.00	0.01	0.1%	0.1%	0.050	0.018
Taameer Real Estate Investment Co KSCP	0.018	0.000	0.00%	0.28	-3.9	0.0%	4	1%	-32%	0.00	0.00	-7.0%	-5.4%	0.034	0.013
Al Masaken International Real Estate Developr	0.038	0.000	0.00%	0.42	46.3	0.4%	4	0%	-13%	0.00	0.00	0.9%	1.2%	0.074	0.027
Mena Real Estate Co KSCP	0.025	-0.001	-3.10%	0.17	-55.7	0.0%	3	3%	-40%	0.01	0.21	-0.3%	-0.1%	0.043	0.021
Sanam Real Estate Company KSCP	0.027	0.000	0.00%	0.34	36.6	0.0%	3	-9%	-32%	0.00	0.00	0.9%	0.9%	0.043	0.027
Ajwan Gulf Real Estate Co KSCP	0.011	-0.001	-4.31%	0.20	-8.0	0.0%	2	1%	-26%	0.02	1.82	-2.5%	-2.2%	0.016	0.009
Effect Real Estate Company KPSC	0.021	0.000	0.00%	0.29	-8.9	4.9%	2	0%	0%	0.00	0.00	-3.3%	-0.6%	0.024	0.020
Al Mudon International Real Estate Co KSCP	0.016	0.000	0.00%	0.12	-8.2	0.0%	2	0%	-35%	0.00	0.00	-1.5%	0.0%	0.029	0.015
<b>Total Real estate - 39 Companies</b>				<b>0.60</b>	<b>21.33</b>	<b>2.7%</b>	<b>1,822</b>			<b>1.27</b>	<b>19.24</b>	<b>2.79%</b>	<b>2.96%</b>		

# DAILY MARKET COVERAGE REPORT

## NIC MENA SECURITIES - RESEARCH AND STUDIES DEP



Technology	Price			Valuation Multiples			MKT Cap	Price Performance		Trading Indicators		ROE	ROA	52 Week (KD)	
Company	Close (KD)	Day Δ	Day % Δ	PBV(X)	PE(X)	DY%	Mn KD	MTD(%)	YTD (%)	Value (Mn KD)	(Mn Shrs)	(%)	(%)	High	Low
Automated Systems Company KPSC	0.062	0.000	0.00%	0.48	-59.65	6.5%	6	-4%	-13%	0.00	0.00	-0.81%	-0.73%	0.086	0.051
<b>Total Technology - 1 Companies</b>				<b>0.48</b>	<b>-59.65</b>	<b>6.5%</b>	<b>6</b>			<b>0.00</b>	<b>0.00</b>	<b>-0.81%</b>	<b>-0.73%</b>		

Telecom	Price			Valuation Multiples			MKT Cap	Price Performance		Trading Indicators		ROE	ROA	52 Week (KD)	
Company	Close (KD)	Day Δ	Day % Δ	PBV(X)	PE(X)	DY%	Mn KD	MTD(%)	YTD (%)	Value (Mn KD)	(Mn Shrs)	(%)	(%)	High	Low
Mobile Telecommunications Company KSCP	0.574	0.002	0.35%	1.91	11.45	5.4%	2,484	5%	-4%	2.199	3.83	16.70%	8.33%	0.604	0.407
Kuwait Telecommunications Company KSCP	0.838	-0.002	-0.24%	1.94	9.60	4.2%	418	1%	6%	0.058	0.07	20.25%	12.02%	0.870	0.680
National Mobile Telecommunications Co KSCF	0.576	-0.002	-0.35%	0.50	9.58	11.2%	289	1%	-30%	0.117	0.20	5.27%	5.12%	0.835	0.550
AAN Digital Services Co KSCP	0.010	0.000	-1.92%	0.31	33.55	0.0%	9	-2%	-24%	0.091	8.79	0.91%	1.01%	0.021	0.009
Hayat Communications Co KSCP	0.050	0.005	11.33%	0.43	21.23	0.0%	4	11%	-33%	0.001	0.03	2.01%	2.74%	0.098	0.025
<b>Telecom - 5 Companies</b>				<b>1.51</b>	<b>11.01</b>	<b>5.8%</b>	<b>3,204</b>			<b>2.5</b>	<b>12.9</b>	<b>13.70%</b>	<b>7.86%</b>		

<b>Total Market 172 Companies</b>							<b>29,169</b>		<b>-18.2%</b>	<b>23.8</b>	<b>134.9</b>	<b>7.94%</b>	<b>1.41%</b>		
-----------------------------------	--	--	--	--	--	--	---------------	--	---------------	-------------	--------------	--------------	--------------	--	--

### End of Report

The information contained in this document is proprietary to NIC and is for use only by the persons to whom it is issued. This document is confidential and may not be distributed either in part or in whole without the express agreement of NIC. It is intended solely for the use of the individual or entity to whom it is addressed and others authorized to receive it.



شركة الاستثمار الوطنية  
NATIONAL INVESTMENTS COMPANY

Sharq, Al Mutanabi Street, Khaleejia Tower | P.O. Box 25667, Safat 13117, Kuwait

T.: +965 2226 6666 | Fax: +965 2226 6793 | [www.nic.com.kw](http://www.nic.com.kw)