

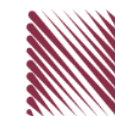
شركة الاستثمارات الوطنية
NATIONAL INVESTMENTS COMPANY

Bursa Kuwait – Daily Market Report
MENA Securities – Research & Studies Dep.

Monday, October 5, 2020

DAILY MARKET COVERAGE REPORT

NIC MENA SECURITIES - RESEARCH AND STUDIES DEP



Index	Close	DTD Chg Net	DTD (%)	YTD (%)	52W High	52W Low	MKT CAP Bn (KD)	PBV (X)	PE (X)	DY (%)
All Share Index	5,597.57	3.57	0.06%	-10.9%	6,416.43	4,339.58	32.44	1.29	15.67	3.75%
Premier Index	6,212.33	7.06	-0.11%	-10.9%	7,172.32	4,498.65	24.26	1.75	14.58	3.44%
Main Index	4,375.88	-3.67	-0.08%	-11.0%	4,932.47	3,965.63	8.18	0.73	20.10	4.67%
NIC 50 Index	6,876.35	14.27	0.21%	-7.8%	7,517.86	5,014.61	27.42	1.48	14.90	3.68%

Index	Value Mn(KD)	Volume (Mn share)
All Share Index	54.32	342.52
Premier Index	41.45	89.61
Main Index	12.87	252.91
NIC 50 Index	48.48	260.16

Market Breadth	UP ↑	Down ↓	No Chg ↔
All Share Index	53	57	63
Premier Index	12	7	1
Main Index	41	50	62
NIC 50 Index	24	19	7

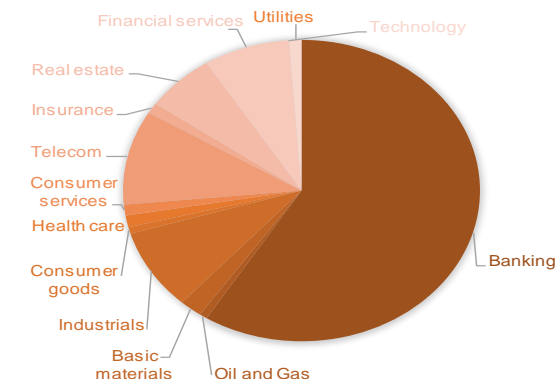
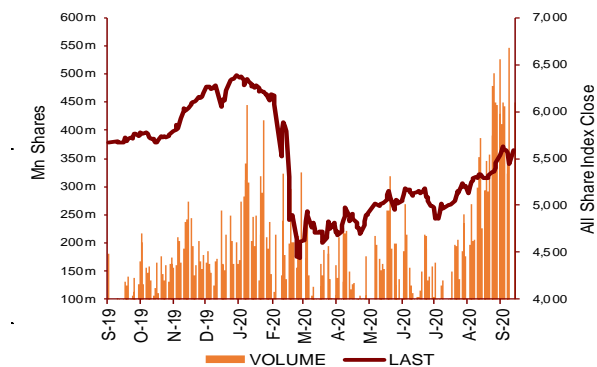
Today's Top 5 Gainer %	Close KD	Value KD	DTD (%)
Munshaat Real Estate Projects	0.082	12,454	10.96%
Al Eid Food	0.061	847	9.98%
Kuwait and Gulf Link Transport	0.055	162,576	9.84%
Energy House Holding	0.022	107,475	7.50%
KGL Logistics	0.030	154,044	4.24%

Today's Top 5 Loser %	Close KD	Value KD	DTD (%)
First Investment	0.035	1,739,122	-11.31%
Al Bareaq Holding	0.075	15	-9.62%
Kuwait Hotels	0.101	20	-9.28%
Gulf Insurance Group	0.650	752	-9.09%
Amar Finance and Leasing	0.053	53	-5.00%

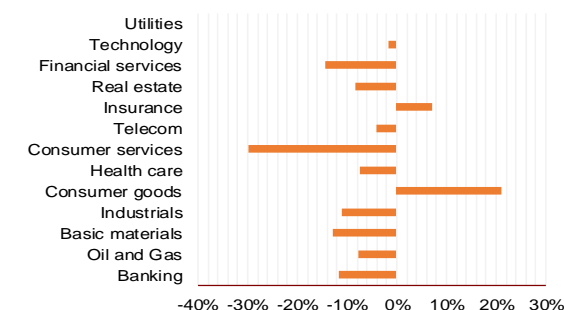
Today's Top 5 by Value	Close KD	DTD Chg	Trade Val Mn(KD)
Kuwait Finance House	0.688	-0.15%	10.88
National Bank of Kuwait	0.893	-0.22%	7.99
Mobile Telecommunications	0.588	0.68%	4.17
Ahli United Bank BSC	0.244	0.41%	3.52
Agility Public Warehousing	0.680	0.59%	3.15

Top 5 by Volume	Close KD	DTD Chg	Trade Vol Mn(Shrs)
First Investment	0.035	-11.31%	47.90
Arzan Financial Group for I	0.061	4.13%	40.96
Aayan Leasing and Investrn	0.093	1.41%	19.80
Kuwait Finance House	0.688	-0.15%	15.77
Gulf Petroleum Investment	0.020	2.00%	15.54

Sector	Close	DTD Chg Net	DTD (%)	YTD (%)	52W High	52W Low	MKT CAP Bn (KD)	PBV (X)	PE (X)	DY (%)
Banking	1,311.88	-0.550	-0.04%	-11.5%	1,536.8	986.4	19.12	1.74	15.93	3.3%
Oil and Gas	1,143.80	2.350	0.21%	-7.6%	1,372.2	985.7	0.23	0.83	26.78	5.3%
Basic materials	790.02	0.530	0.07%	-13.0%	991.8	561.7	0.66	0.95	14.52	7.6%
Industrials	826.38	6.070	0.74%	-10.9%	937.5	602.9	2.82	0.90	13.44	4.9%
Consumer goods	770.91	1.270	0.17%	21.0%	810.7	548.6	0.23	1.53	93.43	2.2%
Health care	820.13	0.000	0.00%	-7.3%	921.9	815.0	0.41	4.14	48.09	1.0%
Consumer services	751.53	-6.000	-0.79%	-29.9%	1,083.1	674.8	0.38	0.86	36.09	4.6%
Telecom	1,072.65	5.020	0.47%	-3.9%	1,116.7	802.2	3.29	1.55	11.29	5.6%
Insurance	1,020.81	-30.200	-2.87%	7.0%	1,068.3	901.0	0.36	0.77	8.67	5.7%
Real estate	970.54	3.800	0.39%	-8.3%	1,083.4	763.2	2.04	0.67	23.90	2.4%
Financial services	927.09	-2.500	-0.27%	-14.3%	1,097.0	801.4	2.53	0.72	16.38	4.1%
Technology	506.34	-24.740	-4.66%	-1.7%	632.9	371.0	0.01	0.55	-67.51	5.7%
Utilities	868.42	10.530	1.23%	0.0%	1,042.1	781.6	0.36	4.74	29.51	0.0%
	5,597.57	3.57	0.06%	-10.9%	6,416.4	4,339.6	32.44	1.29	15.67	3.75%

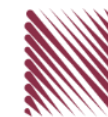


YTD Sector Performance %



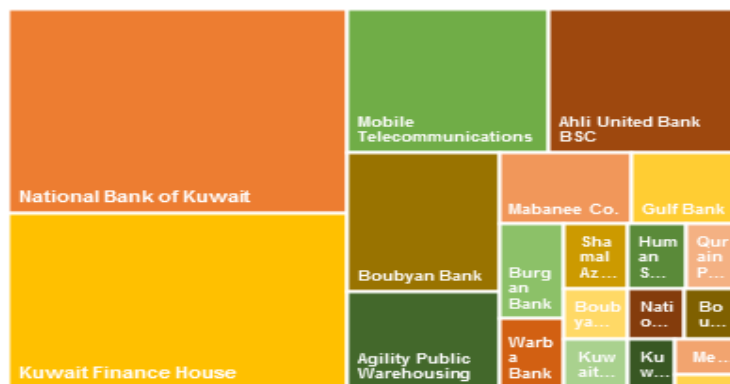
DAILY MARKET COVERAGE REPORT

NIC MENA SECURITIES - RESEARCH AND STUDIES DEP

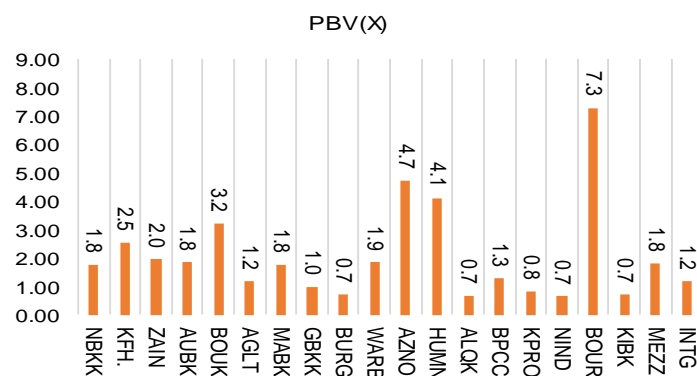


Premier Market	Price			Valuation Multiples			MKT Cap	Price Performance		Trading Indicators		ROE	ROA	52 Week (KD)	
	Close (KD)	Day Δ	Day % Δ	PBV(X)	PE(X)	DY%	Mn KD	MTD(%)	YTD (%)	Value (Mn KD)	(Mn Shrs)	(%)	(%)	High	Low
National Bank of Kuwait	0.893	-0.002	-0.22%	1.77	15.11	3.5%	6,065	3%	-12%	7.99	8.94	11.7%	1.4%	1.062	0.654
Kuwait Finance House	0.688	-0.001	-0.15%	2.53	20.80	2.4%	5,221	4%	-7%	10.88	15.77	12.2%	1.3%	0.761	0.473
Mobile Telecommunications	0.588	0.004	0.68%	1.96	11.73	5.3%	2,544	3%	-2%	4.17	7.10	16.7%	4.6%	0.604	0.407
Ahli United Bank BSC	0.244	0.001	0.41%	1.84	10.75	5.0%	2,355	5%	-17%	3.52	14.45	17.1%	1.8%	0.311	0.160
Boubyan Bank	0.608	0.001	0.16%	3.20	29.39	1.0%	1,841	2%	0%	0.57	0.93	10.9%	1.2%	0.638	0.380
Agility Public Warehousing	0.680	0.004	0.59%	1.18	15.00	2.7%	1,301	4%	-4%	3.15	4.63	7.9%	4.2%	0.748	0.357
Mabane Co.	0.753	0.004	0.53%	1.76	14.75	1.4%	832	3%	-12%	1.44	1.91	11.9%	5.8%	0.877	0.434
Gulf Bank	0.226	-0.002	-0.88%	0.99	10.31	4.4%	656	3%	-25%	2.01	8.85	9.6%	1.0%	0.317	0.180
Burgan Bank	0.209	0.001	0.48%	0.73	6.47	5.5%	548	3%	-31%	0.31	1.48	11.3%	1.2%	0.324	0.175
Warba Bank	0.257	-0.001	-0.39%	1.86	24.48	0.0%	405	3%	-2%	1.72	6.67	7.6%	0.5%	0.279	0.164
Shamal Az-Zour Al-Oula Power & Water	0.330	0.004	1.23%	4.74	29.51	0.0%	363	3%	0%	2.39	7.28	16.1%	2.3%	0.500	0.297
Human Soft Holding	2.710	0.040	1.50%	4.10	9.19	6.8%	330	5%	-10%	0.65	0.24	44.6%	30.3%	3.470	1.944
Qurain Petrochemical Industries	0.279	0.001	0.36%	0.68	10.09	5.5%	285	2%	-10%	0.10	0.35	6.7%	3.6%	0.323	0.163
Boubyan Petrochemical	0.562	-0.001	-0.18%	1.27	23.97	9.2%	283	2%	-16%	0.05	0.09	5.3%	2.1%	0.800	0.395
Kuwait Projects Company Holding	0.155	0.001	0.65%	0.83	9.36	6.0%	281	3%	-28%	0.21	1.36	8.9%	0.3%	0.225	0.147
National Industries Group Holding	0.175	-0.001	-0.57%	0.66	5.39	6.2%	250	6%	-27%	0.55	3.15	12.3%	3.7%	0.247	0.121
Boursa Kuwait Securities Co	1.165	0.002	0.17%	7.29	24.39	0.0%	234	2%	0%	0.27	0.23	29.9%	26.5%	1.210	0.990
Kuwait International Bank	0.195	0.000	0.00%	0.71	11.60	5.1%	199	5%	-25%	1.00	5.14	6.1%	0.6%	0.270	0.162
Mezzan Holding	0.628	0.004	0.64%	1.81	33.94	2.7%	191	1%	26%	0.24	0.38	5.3%	2.2%	0.665	0.428
Integrated Holding	0.365	-0.002	-0.54%	1.17	10.17	11.0%	80	2%	-33%	0.23	0.63	11.5%	8.5%	0.600	0.342
Total	7.06	0.11%	0.11%	1.75	14.58	3.44%	24.26	3.2%	-10.9%	41.45	89.61	12.01%	1.56%		

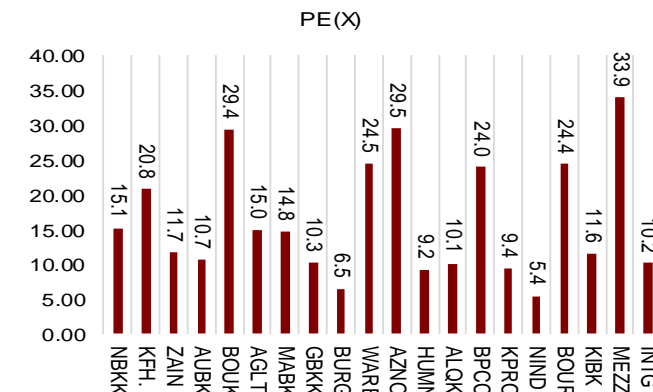
Market Capitalization



Price to Book Value

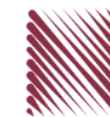


Price to Earning Value

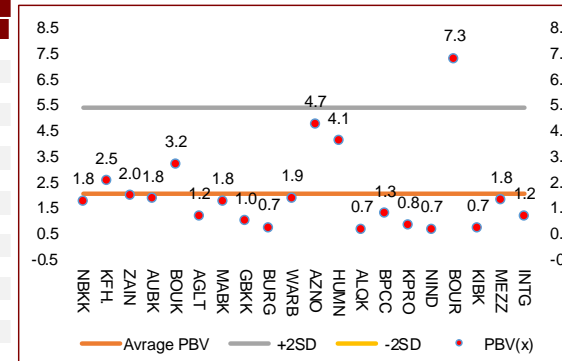


DAILY MARKET COVERAGE REPORT

NIC MENA SECURITIES - RESEARCH AND STUDIES DEP



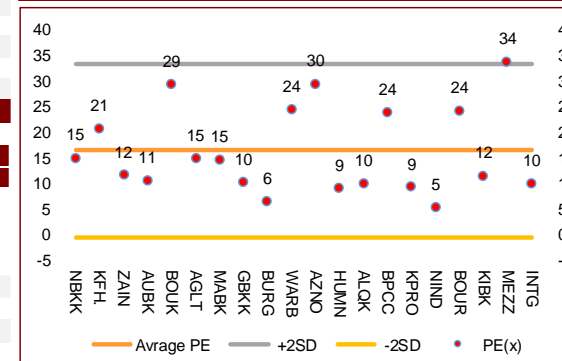
Premier Market	Price			Valuation Multiples			MKT Cap	Price Performance		ROE	ROA
Company	Close (KD)	Day Δ	Day % Δ	PBV(X)	PE(X)	DY%	Mn KD	MTD(%)	YTD (%)	(%)	(%)
National Bank of Kuwait	0.893	-0.002	-0.22%	1.77	15.1	3.5%	6,065	2.5%	-12.5%	11.7%	1.4%
Kuwait Finance House	0.688	-0.001	-0.15%	2.53	20.8	2.4%	5,221	4.2%	-6.5%	12.2%	1.3%
Mobile Telecommunications	0.588	0.004	0.68%	1.96	11.7	5.3%	2,544	2.6%	-1.8%	16.7%	4.6%
Ahli United Bank BSC	0.244	0.001	0.41%	1.84	10.7	5.0%	2,355	4.7%	-16.6%	17.1%	1.8%
Boubyan Bank	0.608	0.001	0.16%	3.20	29.4	1.0%	1,841	2.4%	-0.2%	10.9%	1.2%
Agility Public Warehousing	0.680	0.004	0.59%	1.18	15.0	2.7%	1,301	3.5%	-4.4%	7.9%	4.2%
Mabane Co.	0.753	0.004	0.53%	1.76	14.8	1.4%	832	2.6%	-12.3%	11.9%	5.8%
Gulf Bank	0.226	-0.002	-0.88%	0.99	10.3	4.4%	656	2.7%	-25.4%	9.6%	1.0%
Burgan Bank	0.209	0.001	0.48%	0.73	6.5	5.5%	548	3.5%	-31.2%	11.3%	1.2%
Warba Bank	0.257	-0.001	-0.39%	1.86	24.5	0.0%	405	2.8%	-2.3%	7.6%	0.5%
Shamal Az-Zour Al-Oula Power & Water	0.330	0.004	1.23%	4.74	29.5	0.0%	363	3.1%	0.0%	16.1%	2.3%
Human Soft Holding	2.710	0.040	1.50%	4.10	9.2	6.8%	330	4.6%	-9.7%	44.6%	30.3%
Qurain Petrochemical Industries	0.279	0.001	0.36%	0.68	10.1	5.5%	285	1.8%	-10.0%	6.7%	3.6%
Boubyan Petrochemical	0.562	-0.001	-0.18%	1.27	24.0	9.2%	283	2.0%	-16.0%	5.3%	2.1%
Kuwait Projects Company Holding	0.155	0.001	0.65%	0.83	9.4	6.0%	281	2.6%	-28.2%	8.9%	0.3%
National Industries Group Holding	0.175	-0.001	-0.57%	0.66	5.4	6.2%	250	6.0%	-27.0%	12.3%	3.7%
Boursa Kuwait Securities Co	1.165	0.002	0.17%	7.29	24.4	0.0%	234	1.8%	0.0%	29.9%	26.5%
Kuwait International Bank	0.195	0.000	0.00%	0.71	11.6	5.1%	199	5.4%	-24.9%	6.1%	0.6%
Mezzan Holding	0.628	0.004	0.64%	1.81	33.9	2.7%	191	0.8%	25.6%	5.3%	2.2%
Integrated Holding	0.365	-0.002	-0.54%	1.17	10.2	11.0%	80	2.2%	-33.4%	11.5%	8.5%
Total		7.06	0.11%	1.75	14.58	3.44%	24.26	3.2%	-10.9%	12.01%	1.56%



Premier Market	Price			Moving Average		RSI	MKT Cap	Price Performance		52 Week (KD)	
Description	Close (KD)	Day Δ	Day % Δ	50 Day	200 Day	14 Day	Mn KD	MTD(%)	YTD (%)	High	Low
Premier Index	6,212	7.06	0.11%	5,762	5,878	73	24	3.2%	-10.9%	7,172	4,499

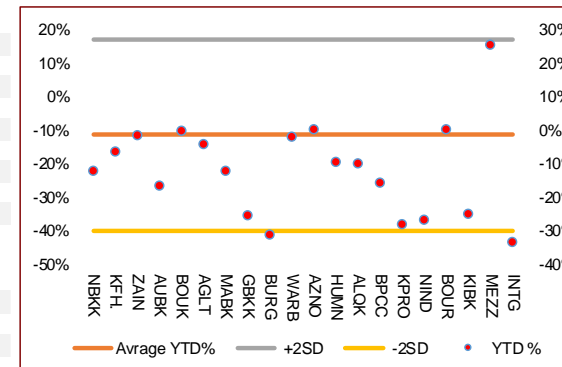
Top 5 Performrs (Today's Price Change)

Human Soft Holding	2.710	0.040	1.50%	2.654	2.794	38	330	4.6%	-9.7%	3.470	1.944
Shamal Az-Zour Al-Oula Power & Water	0.330	0.004	1.23%	0.218	0.055	51	363	3.1%	0.0%	0.500	0.297
Mobile Telecommunications	0.588	0.004	0.68%	0.570	0.548	61	2,544	2.6%	-1.8%	0.604	0.407
Kuwait Projects Company Holding	0.155	0.001	0.65%	0.152	0.177	57	281	2.6%	-28.2%	0.225	0.147
Mezzan Holding	0.628	0.004	0.64%	0.619	0.556	50	191	0.8%	25.6%	0.665	0.428



Middle Performrs (Today's Price Change)

Agility Public Warehousing	0.680	0.004	0.59%	0.638	0.613	72	1,301	3.5%	-4.4%	0.748	0.357
Mabane Co.	0.753	0.004	0.53%	0.655	0.683	81	832	2.6%	-12.3%	0.877	0.434
Burgan Bank	0.209	0.001	0.48%	0.195	0.229	63	548	3.5%	-31.2%	0.324	0.175
Ahli United Bank BSC	0.244	0.001	0.41%	0.217	0.227	74	2,355	4.7%	-16.6%	0.311	0.160
Qurain Petrochemical Industries	0.279	0.001	0.36%	0.281	0.266	55	285	1.8%	-10.0%	0.323	0.163
Boursa Kuwait Securities Co	1.165	0.002	0.17%	0.288	0.072	69	234	1.8%	0.0%	1.210	0.990
Boubyan Bank	0.608	0.001	0.16%	0.566	0.544	64	1,841	2.4%	-0.2%	0.638	0.380
Kuwait International Bank	0.195	0.000	0.00%	0.176	0.204	68	199	5.4%	-24.9%	0.270	0.162
Kuwait Finance House	0.688	-0.001	-0.15%	0.622	0.639	75	5,221	4.2%	-6.5%	0.761	0.473
Boubyan Petrochemical	0.562	-0.001	-0.18%	0.100	0.100	69	283	2.0%	-16.0%	1.210	0.996

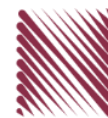


Bottom 5 Performrs (Today's Price Change)

Gulf Bank	0.226	-0.002	-0.88%	0.210	0.237	68	656	2.7%	-25.4%	0.317	0.180
National Industries Group Holding	0.175	-0.001	-0.57%	0.163	0.185	61	250	6.0%	-27.0%	0.247	0.121
Integrated Holding	0.365	-0.002	-0.54%	0.373	0.447	33	80	2.2%	-33.4%	0.600	0.342
Warba Bank	0.257	-0.001	-0.39%	0.212	0.220	81	405	2.8%	-2.3%	0.279	0.164
National Bank of Kuwait	0.893	-0.002	-0.22%	0.837	0.848	67	6,065	2.5%	-12.5%	1.062	0.654

DAILY MARKET COVERAGE REPORT

NIC MENA SECURITIES - RESEARCH AND STUDIES DEP



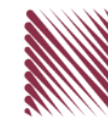
Banking Sector	Price			Valuation Multiples			MKT Cap	Price Performance		Trading Indicators		ROE	ROA	52 Week (KD)	
	Company	Close (KD)	Day Δ	Day % Δ	PBV(X)	PE(X)		DY%	Mn KD	MTD(%)	YTD (%)			Value (Mn KD)	(Mn Shrs)
National Bank of Kuwait	0.893	-0.002	-0.22%	1.77	15.11	3.5%	6,065	3%	-12%	7.99	8.94	11.7%	1.4%	1.062	0.654
Kuwait Finance House	0.688	-0.001	-0.15%	2.53	20.80	2.4%	5,221	4%	-7%	10.88	15.77	12.2%	1.3%	0.761	0.473
Ahli United Bank BSC	0.244	0.001	0.41%	1.84	10.75	5.0%	2,355	5%	-17%	3.52	14.45	17.1%	1.8%	0.311	0.160
Boubyan Bank	0.608	0.001	0.16%	3.20	29.39	1.0%	1,841	2%	0%	0.57	0.93	10.9%	1.2%	0.638	0.380
Commercial Bank of Kuwait	0.500	0.000	0.00%	1.32	0.00	3.7%	965	0%	-5%	0.00	0.00	0.0%	0.0%	0.555	0.465
Gulf Bank	0.226	-0.002	-0.88%	0.99	10.31	4.4%	656	3%	-25%	2.01	8.85	9.6%	1.0%	0.317	0.180
Burgan Bank	0.209	0.001	0.48%	0.73	6.47	5.5%	548	3%	-31%	0.31	1.48	11.3%	1.2%	0.324	0.175
Ahli United Bank	0.280	0.001	0.36%	1.20	9.92	4.9%	546	3%	-14%	0.20	0.71	12.1%	1.3%	0.330	0.225
Warba Bank	0.257	-0.001	-0.39%	1.86	24.48	0.0%	405	3%	-2%	1.72	6.67	7.6%	0.5%	0.279	0.164
Al Ahli Bank of Kuwait	0.196	0.002	1.03%	0.56	10.98	7.1%	315	5%	-24%	0.19	0.98	5.1%	0.6%	0.303	0.156
Kuwait International Bank	0.195	0.000	0.00%	0.71	11.60	5.1%	199	5%	-25%	1.00	5.14	6.1%	0.6%	0.270	0.162
Total Banking Sector - 11 Companies				1.74	15.93	3.3%	19,115			28.39	63.94	10.90%	1.21%		

Basic materials	Price			Valuation Multiples			MKT Cap	Price Performance		Trading Indicators		ROE	ROA	52 Week (KD)	
	Company	Close (KD)	Day Δ	Day % Δ	PBV(X)	PE(X)		DY%	Mn KD	MTD(%)	YTD (%)			Value (Mn KD)	(Mn Shrs)
Qurain Petrochemical Industries	0.279	0.001	0.36%	0.68	10.09	5.5%	285	2%	-10%	0.10	0.35	6.7%	3.6%	0.323	0.163
Boubyan Petrochemical	0.562	-0.001	-0.18%	1.27	23.97	9.2%	283	2%	-16%	0.05	0.09	5.3%	2.1%	0.800	0.395
Al Kout Industrial Projects	0.769	0.000	0.00%	2.50	16.21	6.5%	78	0%	-10%	0.00	0.00	15.4%	11.3%	0.850	0.769
Kuwait Foundry	0.252	-0.001	-0.40%	0.84	20.37	21.2%	18	-2%	-25%	0.00	0.00	4.1%	3.8%	0.495	0.192
Total Basic materials - 4 Companies				0.95	14.52	7.6%	664			0.15	0.45	6.57%	5.07%		

Consumer goods	Price			Valuation Multiples			MKT Cap	Price Performance		Trading Indicators		ROE	ROA	52 Week (KD)	
	Company	Close (KD)	Day Δ	Day % Δ	PBV(X)	PE(X)		DY%	Mn KD	MTD(%)	YTD (%)			Value (Mn KD)	(Mn Shrs)
Mezzan Holding	0.628	0.004	0.64%	1.81	33.94	2.7%	191	1%	26%	0.24	0.38	5.3%	2.2%	0.665	0.428
Livestock Transport and Trading	0.182	-0.004	-2.15%	0.95	32.44	0.1%	38	1%	6%	0.02	0.12	2.9%	2.0%	0.200	0.152
Danah Al Safat Foodstuff	0.012	0.000	0.00%	0.25	(0.30)	0.1%	1	0%	-25%	0.00	0.00	-84.8%	-43.2%	0.029	0.010
Total Basic materials - 3 Companies				1.53	93.43	2.2%	231			0.26	0.50	1.64%	0.90%		

DAILY MARKET COVERAGE REPORT

NIC MENA SECURITIES - RESEARCH AND STUDIES DEP

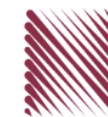


Consumer services	Price			Valuation Multiples			MKT Cap	Price Performance		Trading Indicators		ROE	ROA	52 Week (KD)	
Company	Close (KD)	Day Δ	Day % Δ	PBV(X)	PE(X)	DY%	Mn KD	MTD(%)	YTD (%)	Value (Mn KD)	(Mn Shrs)	(%)	(%)	High	Low
Jazeera Airways	0.593	-0.010	-1.66%	2.95	7.94	5.9%	119	1%	-46%	0.38	0.63	37.1%	9.0%	1.110	0.372
Kuwait National Cinema	0.724	0.000	0.00%	0.83	7.83	6.7%	67	3%	-31%	0.00	0.00	10.6%	7.2%	1.050	0.600
Al Soor Fuel Marketing	0.110	-0.001	-0.90%	0.68	12.87	4.5%	45	0%	-12%	0.00	0.04	5.3%	3.7%	0.129	0.096
Oula Fuel Marketing	0.110	-0.001	-0.90%	0.66	11.51	5.4%	45	-1%	-13%	0.00	0.01	5.7%	3.2%	0.134	0.095
Sultan Center Food Products	0.054	-0.001	-1.82%	0.67	13.59	0.0%	30	2%	4%	0.01	0.13	4.9%	0.7%	0.060	0.036
Jiyad Holding	0.046	0.000	0.00%	0.41	9.18	0.0%	16	15%	18%	0.10	2.18	4.5%	2.8%	0.047	0.029
IFA Hotels and Resorts	0.024	0.001	2.17%	0.84	(0.64)	0.0%	14	1%	-57%	0.01	0.28	-131.5%	-8.1%	0.062	0.021
Kuwait Resorts	0.053	0.000	-0.56%	0.36	9.59	0.0%	10	3%	-7%	0.04	0.83	3.8%	3.2%	0.060	0.038
Future Kid Entertainment and Real Estate	0.080	0.000	0.00%	0.46	30.22	14.4%	9	0%	-9%	0.00	0.00	1.5%	0.9%	0.110	0.069
Alrai Media Group	0.037	0.000	0.00%	0.83	(2.41)	0.0%	9	0%	-2%	0.00	0.00	-34.2%	-20.0%	0.045	0.031
Al Eid Food	0.061	0.006	9.98%	0.41	4.84	0.0%	7	5%	-8%	0.00	0.01	8.4%	6.1%	0.080	0.038
Kuwait Hotels	0.101	-0.010	-9.28%	1.42	(5.82)	0.0%	6	-5%	1%	0.00	0.00	-24.4%	-13.2%	0.111	0.069
Palms Agro Production	0.065	0.000	0.00%	0.55	(45.82)	15.3%	3	0%	62%	0.00	0.00	-1.2%	-0.9%	0.065	0.025
Kuwait Cable Vision	0.014	0.000	0.00%	0.52	(11.65)	0.0%	1	0%	0%	0.00	0.00	-4.5%	-3.0%	0.026	0.012
Total Consumer services - 14 Companies				0.86	36.09	4.6%	380			0.54	4.11	2.38%	2.72%		

Financial services	Price			Valuation Multiples			MKT Cap	Price Performance		Trading Indicators		ROE	ROA	52 Week (KD)	
Company	Close (KD)	Day Δ	Day % Δ	PBV(X)	PE(X)	DY%	Mn KD	MTD(%)	YTD (%)	Value (Mn KD)	(Mn Shrs)	(%)	(%)	High	Low
Egypt Kuwait Holding	0.365	0.000	0.00%	2.16	12.32	5.4%	374	0%	-19%	0.00	0.00	17.6%	7.1%	0.500	0.318
Kuwait Projects Company Holding	0.155	0.001	0.65%	0.83	9.36	6.0%	281	3%	-28%	0.21	1.36	8.9%	0.3%	0.225	0.147
National Industries Group Holding	0.175	-0.001	-0.57%	0.66	5.39	6.2%	250	6%	-27%	0.55	3.15	12.3%	3.7%	0.247	0.121
Boursa Kuwait Securities Co	1.165	0.002	0.17%	7.29	24.39	0.0%	234	2%	0%	0.27	0.23	29.9%	26.5%	1.210	0.990
GFH Financial Group	0.047	0.000	-0.63%	0.51	6.41	6.0%	159	-4%	-32%	0.11	2.30	8.0%	1.3%	0.074	0.042
National Investments	0.138	-0.002	-1.43%	0.61	10.26	5.9%	110	3%	-1%	0.11	0.82	5.9%	5.0%	0.158	0.080
Tamdeen Investment	0.305	0.000	0.00%	0.37	12.65	3.9%	104	0%	-12%	0.00	0.00	3.0%	2.2%	0.400	0.199
Alimtiq Investment Group	0.097	0.000	0.10%	0.46	5.03	8.2%	99	5%	-23%	0.20	2.05	9.1%	5.2%	0.137	0.071
Commercial Facilities	0.186	0.000	0.00%	0.58	7.17	9.0%	94	2%	-14%	0.00	0.00	8.0%	4.2%	0.235	0.179
Aayan Leasing and Investment	0.093	0.001	1.41%	1.09	(5.12)	1.9%	75	7%	99%	1.84	19.80	-21.4%	-4.9%	0.102	0.032
Kuwait Investment	0.131	-0.002	-1.50%	0.57	4.10	7.7%	72	2%	-13%	0.01	0.09	13.9%	6.0%	0.172	0.095
Noor Financial Investment	0.168	-0.002	-1.18%	1.03	8.21	2.9%	66	8%	42%	0.02	0.14	12.5%	7.5%	0.184	0.076

DAILY MARKET COVERAGE REPORT

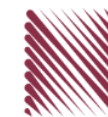
NIC MENA SECURITIES - RESEARCH AND STUDIES DEP



Financial services	Price			Valuation Multiples			MKT Cap	Price Performance		Trading Indicators		ROE	ROA	52 Week (KD)	
	Company	Close (KD)	Day Δ	Day % Δ	PBV(X)	PE(X)		DY%	Mn KD	MTD(%)	YTD (%)			Value (Mn KD)	(Mn Shrs)
Arzan Financial Group for Financing and Invest	0.061	0.002	4.13%	0.49	43.99	0.0%	48	8%	154%	2.45	40.96	1.1%	0.7%	0.064	0.022
Kuwait Financial Centre	0.088	0.003	3.17%	0.44	6.04	5.6%	42	3%	-18%	0.01	0.15	7.3%	3.5%	0.121	0.070
Gulf Investment House	0.096	0.000	0.00%	1.08	177.57	0.0%	39	2%	49%	0.05	0.51	0.6%	0.5%	0.108	0.038
Al Bareaq Holding	0.075	-0.008	-9.62%	0.79	15.02	0.0%	33	-5%	-25%	0.00	0.00	5.2%	5.0%	0.110	0.079
Arabi Group Holdings	0.198	0.000	0.00%	1.07	(19.90)	0.0%	33	0%	-28%	0.00	0.00	-5.4%	-0.6%	0.337	0.088
Kuwait and Middle East Financial Investment	0.113	-0.001	-0.88%	1.84	45.13	0.0%	30	3%	26%	0.02	0.20	4.1%	3.2%	0.138	0.063
Privatization Holding	0.044	0.001	3.06%	0.32	(39.49)	0.0%	27	1%	-15%	0.06	1.32	-0.8%	-0.5%	0.059	0.037
Asiya Capital Investments	0.034	0.000	-1.16%	0.37	17.52	0.2%	26	1%	-21%	0.02	0.50	2.1%	2.0%	0.041	0.029
Umm Al Qaiwain General Investment Co	0.072	0.000	0.00%	0.48	13.53	5.1%	26	0%	8%	0.00	0.00	3.6%	3.3%	0.096	0.052
Securities House	0.046	0.001	2.43%	0.63	(67.69)	0.0%	26	7%	2%	0.26	5.59	-0.9%	-0.7%	0.050	0.027
KAMCO Investment	0.075	0.002	2.05%	0.45	8.41	0.0%	26	4%	-17%	0.12	1.57	5.4%	2.3%	0.111	0.060
First Investment	0.035	-0.005	-11.31%	0.55	(0.48)	0.0%	23	12%	3%	1.74	47.90	-113.6%	-62.0%	0.045	0.022
Inovest BSC Public	0.074	-0.003	-4.01%	0.52	9.97	7.9%	22	1%	19%	0.05	0.63	5.2%	2.9%	0.080	0.044
Coast Investment and Development	0.036	-0.001	-1.92%	0.38	35.68	0.0%	21	3%	-8%	0.01	0.16	1.1%	1.0%	0.045	0.026
Al Madar Finance and Investment	0.084	-0.001	-1.06%	0.76	12.51	0.0%	17	2%	-10%	0.01	0.06	6.1%	5.0%	0.148	0.062
Bayan Investment	0.046	0.001	1.11%	0.46	(23.51)	0.0%	16	-4%	18%	0.00	0.10	-1.9%	-0.8%	0.053	0.031
Al Manar Financing and Leasing	0.049	0.000	0.00%	0.45	12.63	1.0%	15	11%	-5%	0.00	0.00	3.5%	2.7%	0.060	0.037
Manazel Holding	0.034	0.000	-0.88%	0.74	21.60	0.0%	14	5%	-14%	0.02	0.65	3.4%	0.8%	0.048	0.021
Kuwait Finance and Investment	0.046	0.000	-0.66%	0.36	20.43	0.0%	14	0%	-12%	0.00	0.01	1.8%	1.2%	0.058	0.038
National International Holding	0.062	0.000	0.00%	0.33	7.46	4.7%	13	4%	-15%	0.00	0.01	4.4%	3.3%	0.081	0.051
Osoul Investment	0.081	-0.002	-1.83%	0.61	6.76	0.0%	12	1%	7%	0.00	0.01	9.0%	8.2%	0.121	0.070
UniCap Investment and Finance	0.045	0.000	0.00%	0.46	(22.53)	0.0%	11	6%	-18%	0.00	0.00	-2.0%	-1.0%	0.057	0.035
Amar Finance and Leasing	0.053	-0.003	-5.00%	0.60	44.54	0.0%	10	-5%	40%	0.00	0.00	1.3%	1.2%	0.064	0.037
Gulf North Africa Holding	0.059	-0.001	-0.84%	0.78	76.01	0.0%	9	1%	-5%	0.00	0.01	1.0%	0.6%	0.062	0.052
Al Salam Group Holding	0.029	0.000	1.41%	0.25	217.42	0.0%	8	12%	-2%	0.24	8.20	0.1%	0.1%	0.033	0.018
International Financial Advisors	0.031	0.000	0.00%	0.93	(0.42)	2.1%	8	0%	-42%	0.00	0.00	-222.8%	-19.3%	0.060	0.027
Amwal International Investment	0.032	0.000	0.00%	0.60	11.94	0.0%	6	-9%	8%	0.00	0.00	5.0%	2.6%	0.044	0.030
Al Madina for Finance and Investment	0.014	0.000	1.50%	0.45	(2.54)	0.0%	5	9%	-11%	0.06	4.33	-17.9%	-7.7%	0.019	0.009
Credit Rating and Collection	0.032	0.000	0.00%	0.97	(21.20)	0.0%	5	0%	58%	0.00	0.00	-4.6%	-4.3%	0.035	0.019
Ekttitab Holding	0.015	0.000	-0.65%	0.37	(10.77)	0.0%	5	-2%	1%	0.02	1.04	-3.4%	-3.0%	0.017	0.010
Kuwait Syrian Holding Co	0.027	-0.001	-1.82%	0.23	(13.79)	0.0%	5	0%	-14%	0.00	0.00	-1.7%	-1.1%	0.043	0.022
Warba Capital Holding	0.045	-0.002	-3.23%	0.50	(7.15)	0.0%	4	-3%	-30%	0.06	1.35	-7.0%	-6.2%	0.071	0.042
National Consumer Holding	0.048	0.000	0.00%	0.53	235.16	0.0%	4	0%	-13%	0.00	0.00	0.2%	0.2%	0.100	0.010
Al Deera Holding	0.016	0.000	0.00%	0.70	(9.02)	0.0%	3	0%	-20%	0.00	0.00	-7.7%	-1.7%	0.022	0.011
Al Mal Investment Company	0.009	0.000	-1.09%	0.40	(0.85)	0.0%	3	2%	-8%	0.03	3.06	-47.6%	-23.3%	0.016	0.008
Gulf Franchising Holding	0.048	0.000	0.00%	0.75	(2.08)	0.0%	2	0%	-36%	0.00	0.00	-36.2%	-10.8%	0.160	0.001
Tamkeen Holding	0.005	0.000	0.00%	0.05	(7.18)	0.0%	0	0%	0%	0.00	0.00	-0.7%	-0.7%	0.005	0.005
Total Financial services - 49 Companies				0.72	16.38	4.1%	2,530			8.53	148.25	4.42%	4.14%		

DAILY MARKET COVERAGE REPORT

NIC MENA SECURITIES - RESEARCH AND STUDIES DEP

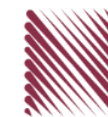


Health care	Price			Valuation Multiples			MKT Cap	Price Performance		Trading Indicators		ROE	ROA	52 Week (KD)	
Company	Close (KD)	Day Δ	Day % Δ	PBV(X)	PE(X)	DY%	Mn KD	MTD(%)	YTD (%)	Value (Mn KD)	(Mn Shrs)	(%)	(%)	High	Low
Al-Maidan Clinic for Oral Health Services	1.220	0.000	0.00%	7.90	47.78	0.6%	305	0%	0%	0.00	0.00	16.5%	10.9%	1.240	1.220
Advanced Technology	0.597	0.000	0.00%	1.55	48.60	2.5%	90	0%	-26%	0.00	0.00	3.2%	0.7%	0.900	0.580
Yiaco Medical	0.707	0.000	0.00%	6.06	52.72	0.0%	12	0%	0%	0.00	0.00	11.5%	0.6%	0.707	0.707
Total Health care - 3 Companies				4.14	48.09	1.0%	407			0.00	0.00	8.61%	4.68%		

Industrials	Price			Valuation Multiples			MKT Cap	Price Performance		Trading Indicators		ROE	ROA	52 Week (KD)	
Company	Close (KD)	Day Δ	Day % Δ	PBV(X)	PE(X)	DY%	Mn KD	MTD(%)	YTD (%)	Value (Mn KD)	(Mn Shrs)	(%)	(%)	High	Low
Agility Public Warehousing	0.680	0.004	0.59%	1.18	15.00	2.7%	1,301	4%	-4%	3.15	4.63	7.9%	4.2%	0.748	0.357
Human Soft Holding	2.710	0.040	1.50%	4.10	9.19	6.8%	330	5%	-10%	0.65	0.24	44.6%	30.3%	3.470	1.944
ALAFCO Aviation Lease and Finance	0.164	0.000	0.00%	0.49	8.82	6.1%	156	4%	-40%	0.37	2.26	5.5%	1.4%	0.278	0.138
Kuwait Cement	0.214	0.008	3.88%	0.73	37.98	6.9%	153	10%	-13%	0.50	2.35	1.9%	1.3%	0.270	0.144
Gulf Cable and Electrical Industries	0.718	0.002	0.28%	0.86	35.61	3.8%	151	5%	47%	0.11	0.15	2.4%	2.2%	0.742	0.390
Integrated Holding	0.365	-0.002	-0.54%	1.17	10.17	11.0%	80	2%	-33%	0.23	0.63	11.5%	8.5%	0.600	0.342
Kuwait Portland Cement	0.760	0.001	0.13%	1.02	10.04	12.9%	76	1%	-23%	0.09	0.12	10.2%	8.2%	1.150	0.683
Educational Holding Group	0.309	0.000	0.00%	1.79	9.78	4.8%	76	0%	-30%	0.00	0.00	18.3%	16.7%	0.475	0.228
United Projects for Aviation Services	0.465	0.000	0.00%	0.98	7.96	4.5%	74	0%	-9%	0.00	0.00	12.3%	7.8%	0.512	0.367
Heavy Engineering Industries and Shipbuilding	0.375	0.000	0.00%	1.08	6.02	7.8%	68	3%	-7%	0.01	0.02	18.0%	5.9%	0.419	0.298
National Industries	0.154	0.001	0.65%	0.64	12.55	6.4%	54	-1%	-7%	0.00	0.00	5.1%	3.8%	0.173	0.143
ACICO Industries	0.102	0.000	0.00%	0.33	13.28	4.8%	34	1%	-23%	0.01	0.05	2.5%	0.6%	0.137	0.081
Kuwait Company for Process Plant Constructi	0.309	0.001	0.32%	1.22	6.62	5.8%	33	1%	28%	0.02	0.07	18.5%	7.7%	0.337	0.175
Ras Al Khaimah for White Cement and Constr	0.065	0.000	0.00%	0.51	19.94	8.4%	33	0%	0%	0.00	0.00	2.6%	2.0%	0.080	0.055
Combined Group Contracting	0.184	0.000	0.00%	0.64	8.29	11.2%	30	7%	-26%	0.15	0.80	7.7%	1.2%	0.251	0.138
Gulf Cement	0.032	-0.001	-3.03%	0.32	(11.67)	13.0%	26	-3%	-42%	0.00	0.00	-2.7%	-2.2%	0.060	0.029
Sharjah Cement and Industrial Development	0.042	0.000	0.00%	0.21	25.32	12.4%	26	0%	0%	0.00	0.00	0.8%	0.6%	0.063	0.042
KGL Logistics	0.030	0.001	4.24%	0.22	4.80	0.1%	22	9%	-22%	0.15	5.28	4.6%	2.9%	0.043	0.023
Kuwait and Gulf Link Transport	0.055	0.005	9.84%	0.23	16.54	0.0%	15	17%	-18%	0.16	3.18	1.4%	0.4%	0.077	0.042
Shuaiba Industrial	0.130	0.000	0.00%	0.72	40.15	7.6%	13	0%	-16%	0.00	0.00	1.8%	1.4%	0.180	0.122
National Cleaning	0.059	0.002	3.91%	0.35	7.83	8.7%	12	3%	-15%	0.01	0.10	4.4%	1.5%	0.088	0.047
Fujairah Cement Industries	0.034	0.000	0.00%	0.14	16.54	12.3%	12	0%	-24%	0.01	0.18	0.8%	0.4%	0.052	0.029
Hilal Cement	0.114	0.000	0.00%	0.99	(9.37)	13.2%	12	0%	14%	0.00	0.00	-10.6%	-6.2%	0.126	0.063
Mubarrad Holding	0.063	0.000	0.16%	0.50	10.15	7.5%	10	3%	-29%	0.04	0.62	4.9%	4.1%	0.089	0.049
Specialities Group Holding	0.063	-0.001	-0.94%	0.34	7.53	0.0%	10	2%	-17%	0.03	0.46	4.5%	3.5%	0.078	0.050
National Ranges	0.015	0.000	-1.31%	0.27	(1.10)	0.0%	4	6%	48%	0.01	0.77	-24.9%	-5.3%	0.018	0.007
Salbookh Trading	0.036	0.001	4.09%	0.48	(2.08)	0.0%	4	-1%	-29%	0.00	0.00	-23.2%	-15.9%	0.051	0.026
Metal and Recycling	0.039	0.000	0.00%	0.33	(1.66)	0.0%	4	0%	-22%	0.00	0.00	-19.7%	-10.1%	0.070	0.020
Equipment Holding	0.016	0.000	0.62%	0.32	(187.07)	0.0%	2	0%	-27%	0.01	0.70	-0.2%	-0.1%	0.024	0.013
Total Industrials - 29 Companies				0.90	13.44	4.9%	2,820			5.71	22.63	6.67%	5.05%		

DAILY MARKET COVERAGE REPORT

NIC MENA SECURITIES - RESEARCH AND STUDIES DEP



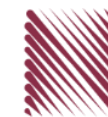
Insurance		Price			Valuation Multiples			MKT Cap	Price Performance		Trading Indicators		ROE	ROA	52 Week (KD)	
Company	Close (KD)	Day Δ	Day % Δ	PBV(X)	PE(X)	DY%	Mn KD	MTD(%)	YTD (%)	Value (Mn KD)	(Mn Shrs)	(%)	(%)	High	Low	
Gulf Insurance Group	0.650	-0.065	-9.09%	1.11	9.07	5.7%	121	-9%	-2%	0.00	0.00	12.3%	1.7%	0.720	0.550	
Al Ahleia Insurance	0.406	0.006	1.50%	0.77	8.18	8.3%	84	1%	-1%	0.11	0.27	9.4%	3.3%	0.445	0.367	
Kuwait Insurance	0.360	-0.001	-0.28%	0.59	6.97	6.6%	67	0%	9%	0.00	0.00	8.5%	4.6%	0.387	0.300	
Kuwait Reinsurance	0.221	0.000	0.00%	0.84	9.46	2.0%	45	0%	60%	0.00	0.00	8.9%	3.2%	0.221	0.126	
Bahrain Kuwait Insurance	0.200	0.000	0.00%	0.93	12.87	6.1%	28	0%	0%	0.00	0.00	7.2%	1.1%	0.200	0.200	
Warba Insurance	0.078	0.000	-0.13%	0.34	11.06	0.0%	13	7%	29%	0.01	0.07	3.1%	1.0%	0.094	0.051	
First Takaful Insurance	0.040	0.000	0.00%	0.48	5.03	0.0%	4	7%	4%	0.00	0.00	9.6%	5.9%	0.056	0.031	
Wethaq Takaful Insurance	0.022	0.000	-1.75%	0.20	(28.35)	0.0%	2	-5%	-10%	0.00	0.07	-0.7%	-0.7%	0.035	0.018	
Total Insurance - 8 Companies				0.77	8.67	5.7%	364			0.12	0.41	8.86%	3.00%			

Oil and Gas		Price			Valuation Multiples			MKT Cap	Price Performance		Trading Indicators		ROE	ROA	52 Week (KD)	
Company	Close (KD)	Day Δ	Day % Δ	PBV(X)	PE(X)	DY%	Mn KD	MTD(%)	YTD (%)	Value (Mn KD)	(Mn Shrs)	(%)	(%)	High	Low	
National Petroleum Services	1.100	0.000	0.00%	2.62	9.38	6.4%	107	0%	-6%	0.00	0.00	27.9%	23.6%	1.389	0.903	
Independent Petroleum Group	0.430	0.000	0.00%	0.79	11.72	7.0%	78	0%	-11%	0.00	0.01	6.8%	2.2%	0.497	0.375	
Burgan for Well Drilling Trading and Maintenanc	0.074	-0.004	-4.89%	0.27	7.51	0.0%	17	-5%	-8%	0.00	0.01	3.6%	1.1%	0.098	0.060	
Energy House Holding	0.022	0.002	7.50%	0.66	(2.95)	0.0%	16	10%	-5%	0.11	5.06	-22.5%	-17.0%	0.036	0.014	
Gulf Petroleum Investment	0.020	0.000	2.00%	0.23	(6.57)	0.0%	9	10%	1%	0.31	15.54	-3.4%	-2.3%	0.023	0.012	
Senergy Holding	0.019	0.000	1.06%	0.38	(0.80)	0.0%	4	-1%	-14%	0.00	0.07	-47.9%	-30.4%	0.027	0.014	
Total Oil and Gas - 6 Companies				0.83	26.78	5.3%	231			0.42	20.68	3.10%	2.18%			

Real estate		Price			Valuation Multiples			MKT Cap	Price Performance		Trading Indicators		ROE	ROA	52 Week (KD)	
Company	Close (KD)	Day Δ	Day % Δ	PBV(X)	PE(X)	DY%	Mn KD	MTD(%)	YTD (%)	Value (Mn KD)	(Mn Shrs)	(%)	(%)	High	Low	
Mabane Co.	0.753	0.004	0.53%	1.76	14.75	1.4%	832	3%	-12%	1.44	1.91	11.9%	5.8%	0.877	0.434	
Salhia Real Estate	0.404	0.004	1.00%	1.22	9.28	4.9%	200	1%	-3%	0.30	0.74	13.2%	5.8%	0.460	0.330	
Commercial Real Estate	0.105	0.000	0.00%	0.64	13.01	5.4%	190	2%	12%	0.06	0.54	5.0%	2.7%	0.111	0.083	
National Real Estate	0.075	0.000	-0.13%	0.42	9.92	0.0%	113	2%	-13%	0.36	4.79	4.2%	2.4%	0.090	0.058	
Tamdeen Real Estate	0.259	-0.001	-0.38%	0.37	12.64	3.9%	104	-1%	-19%	0.00	0.00	3.0%	2.2%	0.343	0.241	
Kuwait Real Estate	0.096	0.000	0.31%	0.67	12.25	0.4%	86	2%	-9%	0.02	0.22	5.5%	2.2%	0.115	0.070	
United Real Estate	0.049	-0.001	-2.00%	0.28	(7.29)	0.0%	53	2%	-19%	0.01	0.11	-3.9%	-1.2%	0.063	0.045	
First Dubai for Real Estate Development	0.042	0.000	0.48%	0.56	45.62	0.9%	42	6%	15%	0.08	1.86	1.2%	1.0%	0.055	0.027	
Al Mazaya Holding	0.054	0.000	-0.37%	0.42	(3.86)	0.1%	34	3%	-8%	0.01	0.17	-11.0%	-3.8%	0.067	0.047	
Ajial Real Estate Entertainment	0.146	0.004	2.82%	0.23	14.11	0.0%	28	0%	-16%	0.03	0.24	1.6%	1.4%	0.213	0.115	
Injazzat Real Estate Development	0.079	0.000	0.00%	0.51	(3.79)	8.7%	26	0%	-1%	0.00	0.00	-13.4%	-7.0%	0.091	0.061	

DAILY MARKET COVERAGE REPORT

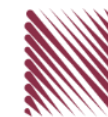
NIC MENA SECURITIES - RESEARCH AND STUDIES DEP



Real estate Company	Price			Valuation Multiples			MKT Cap	Price Performance		Trading Indicators		ROE	ROA	52 Week (KD)	
	Close (KD)	Day Δ	Day % Δ	PBV(X)	PE(X)	DY%	Mn KD	MTD(%)	YTD (%)	Value (Mn KD)	(Mn Shrs)	(%)	(%)	High	Low
Munshaat Real Estate Projects	0.082	0.008	10.96%	0.56	30.22	2.6%	26	16%	11%	0.01	0.17	1.8%	0.7%	0.090	0.045
Aayan Real Estate	0.060	-0.002	-2.77%	0.35	11.68	8.0%	25	2%	-18%	0.02	0.26	3.0%	1.9%	0.080	0.048
Al Argan International Real Estate	0.093	0.000	0.00%	0.27	30.14	5.3%	24	0%	-11%	0.00	0.00	0.9%	0.3%	0.135	0.060
Al-Enmaa Real Estate	0.050	0.001	1.22%	0.50	13.14	0.0%	22	6%	-20%	0.04	0.72	3.8%	2.4%	0.079	0.037
Ream Real Estate	0.204	0.000	0.00%	1.56	(8.21)	1.1%	22	0%	132%	0.00	0.00	-19.0%	-10.1%	0.204	0.060
Arkan Al Kuwait Real Estate	0.085	0.000	0.00%	0.61	9.21	9.2%	21	4%	-4%	0.00	0.00	6.6%	3.5%	0.100	0.076
Kuwait Business Town Real Estate	0.032	0.000	0.00%	0.29	8.12	0.2%	20	7%	-28%	0.09	2.75	3.6%	2.7%	0.046	0.022
Dalqan Real Estate	0.318	0.000	0.00%	2.91	58.98	0.0%	19	0%	0%	0.00	0.00	4.9%	4.9%	0.318	0.318
Sokouk Holding	0.029	0.000	0.00%	0.36	(4.89)	0.0%	17	7%	-17%	0.15	5.11	-7.4%	-4.7%	0.040	0.022
Tijara and Realestate Investment	0.041	0.000	0.00%	0.38	10.65	4.9%	15	0%	-19%	0.00	0.00	3.6%	1.9%	0.055	0.034
Al-Arabiya Real Estate	0.029	0.000	-0.69%	0.25	8.67	2.2%	14	8%	-3%	0.17	6.04	2.9%	1.1%	0.033	0.020
Aqar Real Estate Investments	0.060	0.001	1.01%	0.43	5.01	8.3%	13	1%	-25%	0.00	0.02	8.7%	7.3%	0.089	0.058
Mashaer Holding	0.061	0.001	1.85%	0.46	6.52	0.0%	11	2%	-24%	0.01	0.14	7.1%	5.0%	0.086	0.048
Investors Holding Group	0.017	0.000	-1.15%	0.87	(0.82)	0.0%	11	11%	118%	0.23	13.11	-106.5%	-57.2%	0.032	0.007
Dar Al Thuraya Real Estate	0.072	0.000	0.00%	0.68	19.01	0.0%	11	0%	3%	0.00	0.00	3.6%	3.6%	0.190	0.040
Osos Holding Group	0.088	0.001	1.15%	0.70	6.64	10.7%	9	1%	-12%	0.00	0.00	10.5%	7.0%	0.118	0.081
Al Massaleh Real Estate	0.036	0.000	0.00%	0.40	(5.02)	0.0%	8	4%	-3%	0.01	0.14	-8.1%	-1.9%	0.040	0.026
Abyaar Real Estate Development	0.007	0.000	0.00%	0.21	(0.51)	0.0%	8	0%	-6%	0.00	0.00	-40.9%	-12.4%	0.013	0.005
Kuwait Remal Real Estate	0.022	-0.001	-3.03%	0.34	(3.08)	0.0%	7	11%	-8%	0.03	1.41	-11.0%	-3.9%	0.027	0.013
Kuwait Real Estate Holding	0.026	0.000	1.15%	0.04	0.70	6.8%	5	1%	-8%	0.00	0.02	5.5%	2.2%	0.034	0.022
Taameer Real Estate Investment	0.019	0.000	-2.05%	0.28	(4.04)	0.0%	4	3%	-28%	0.02	0.81	-7.0%	-4.5%	0.034	0.013
Sanam Real Estate	0.033	0.001	4.10%	0.42	44.69	0.0%	4	-6%	-17%	0.02	0.59	0.9%	0.9%	0.043	0.027
Mena Real Estate	0.029	0.000	1.04%	0.20	(64.86)	0.0%	4	5%	-29%	0.35	11.75	-0.3%	-0.2%	0.043	0.021
Al Masaken International Real Estate Developr	0.036	0.000	0.00%	0.40	43.60	0.5%	4	0%	-18%	0.00	0.00	0.9%	0.4%	0.074	0.026
Real Estate Trade Centers	0.027	-0.001	-4.91%	0.15	154.84	0.0%	3	0%	17%	0.00	0.01	0.1%	0.1%	0.050	0.018
Ajwan Gulf Real Estate	0.011	0.000	0.00%	0.19	(7.68)	0.0%	2	0%	-29%	0.00	0.00	-2.5%	-2.2%	0.016	0.009
Effect Real Estate	0.021	0.000	0.00%	0.29	(8.85)	4.9%	2	0%	0%	0.00	0.00	-3.3%	-3.2%	0.021	0.021
Al Mudon International Real Estate	0.016	0.000	0.00%	0.12	(8.22)	0.0%	2	0%	-35%	0.00	0.00	-1.5%	-1.4%	0.029	0.015
Total Real estate - 39 Companies				0.67	23.90	2.4%	2,042			3.42	53.65	2.79%	2.96%		

DAILY MARKET COVERAGE REPORT

NIC MENA SECURITIES - RESEARCH AND STUDIES DEP



Technology	Price			Valuation Multiples			MKT Cap	Price Performance		Trading Indicators		ROE	ROA	52 Week (KD)	
	Company	Close (KD)	Day Δ	Day % Δ	PBV(X)	PE(X)		DY%	Mn KD	MTD(%)	YTD (%)			Value (Mn KD)	(Mn Shrs)
Automated Systems	0.070	-0.003	-4.66%	0.55	(67.51)	5.7%	7	1%	0%	0.00	0.03	-0.8%	-0.7%	0.087	0.051
Total Technology - 1 Companies				0.55	(67.51)	5.7%	7			0.00	0.03	-0.81%	-0.73%		

Telecom	Price			Valuation Multiples			MKT Cap	Price Performance		Trading Indicators		ROE	ROA	52 Week (KD)	
	Company	Close (KD)	Day Δ	Day % Δ	PBV(X)	PE(X)		DY%	Mn KD	MTD(%)	YTD (%)			Value (Mn KD)	(Mn Shrs)
Mobile Telecommunications	0.588	0.004	0.68%	1.96	11.73	5.3%	2,544	3%	-2%	4.17	7.10	16.7%	4.6%	0.604	0.407
Kuwait Telecommunications	0.840	-0.002	-0.24%	1.95	9.62	4.2%	419	0%	7%	0.04	0.05	20.2%	11.1%	0.870	0.680
National Mobile Telecommunications	0.611	-0.001	-0.16%	0.54	10.16	10.6%	306	1%	-26%	0.00	0.00	5.3%	2.4%	0.835	0.550
AAN Digital Services	0.013	-0.001	-3.62%	0.39	43.38	0.0%	12	4%	-1%	0.18	13.44	0.9%	0.7%	0.021	0.009
Hayat Communications	0.058	0.000	0.00%	0.50	24.74	0.0%	5	0%	-22%	0.00	0.00	2.0%	0.8%	0.098	0.033
Telecom - 5 Companies				1.55	11.29	5.6%	3,287			4.39	20.59	13.70%	7.86%		

Utilities	Price			Valuation Multiples			MKT Cap	Price Performance		Trading Indicators		ROE	ROA	52 Week (KD)	
	Company	Close (KD)	Day Δ	Day % Δ	PBV(X)	PE(X)		DY%	Mn KD	MTD(%)	YTD (%)			Value (Mn KD)	(Mn Shrs)
Shamal Az-Zour Al-Oula Power & Water	0.330	0.004	1.23%	4.74	29.51	0.0%	363	3%	0%	2.39	7.28	16.1%	2.3%	0.500	0.297
Total Utilities - 1 Companies				4.74	29.51	0.0%	363			2.39	7.28	16.06%	2.26%		

Total Market 173 Companies				1.29	15.67	3.75%	32.44			54.32	342.52	8.26%	2.76%		
-----------------------------------	--	--	--	-------------	--------------	--------------	--------------	--	--	--------------	---------------	--------------	--------------	--	--

End of Report

The information contained in this document is proprietary to NIC and is for use only by the persons to whom it is issued. This document is confidential and may not be distributed either in part or in whole without the express agreement of NIC. It is intended solely for the use of the individual or entity to whom it is addressed and others authorized to receive it.



شركة الاستثمار الوطنية
NATIONAL INVESTMENTS COMPANY

Sharq, Al Mutanabi Street, Khaleejia Tower | P.O. Box 25667, Safat 13117, Kuwait

T.: +965 2226 6666 | Fax: +965 2226 6793 | www.nic.com.kw