

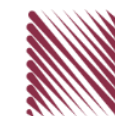
شركة الاستثمارات الوطنية  
NATIONAL INVESTMENTS COMPANY

**Bursa Kuwait – Daily Market Report**  
**MENA Securities – Research & Studies Dep.**

Wednesday, September 23, 2020

# DAILY MARKET COVERAGE REPORT

## NIC MENA SECURITIES - RESEARCH AND STUDIES DEP



Index	Close	DTD Chg Net	DTD (%)	YTD (%)	52W High	52W Low	MKT CAP Bn (KD)	PBV (X)	PE (X)	DY (%)
All Share Index	5,624.39	46.62	0.84%	-10.5%	6,416.43	4,339.58	32.59	1.30	15.74	3.74%
Premier Index	6,240.58	61.94	1.00%	-10.6%	7,172.32	4,498.65	24.37	1.76	14.65	3.43%
Main Index	4,400.01	15.14	0.35%	-10.4%	4,932.47	3,965.63	8.22	0.73	20.21	4.64%
NIC 50 Index	6,907.05	62.85	0.92%	-7.4%	7,517.86	5,014.61	27.54	1.48	14.96	3.66%

Index	Value Mn(KD)	Volume (Mn share)
All Share Index	67.47	449.26
Premier Index	48.99	130.79
Main Index	18.48	318.47
NIC 50 Index	59.82	354.14

Market Breadth	UP	Down	No Chg
All Share Index	70	47	56
Premier Index	18	2	0
Main Index	52	45	56
NIC 50 Index	34	11	5

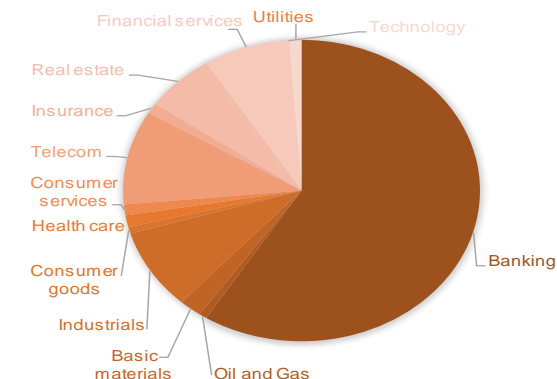
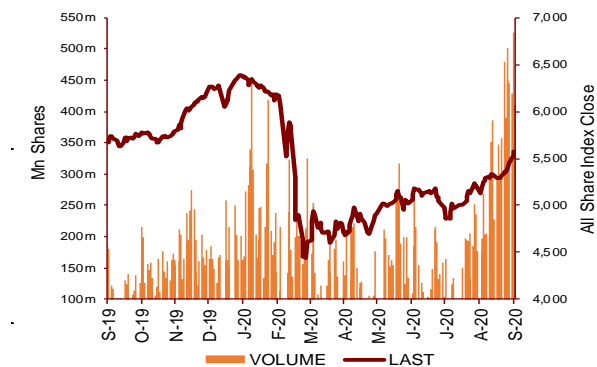
Today's Top 5 Gainer %	Close KD	Value KD	DTD (%)
Munshaat Real Estate Projects	0.081	13,937	15.00%
Al Masaken International Real	0.035	2	9.87%
Hilal Cement	0.114	1,320	9.62%
Investors Holding Group	0.018	1,257,174	7.14%
Al Salam Group Holding	0.029	377,447	6.74%

Today's Top 5 Loser %	Close KD	Value KD	DTD (%)
Dar Al Thuraya Real Estate	0.071	9,422	-9.64%
Hayat Communications	0.058	506	-9.55%
National Consumer Holding	0.048	16,262	-5.33%
Tijara and Real Estate Invest	0.039	112	-4.68%
Al Eid Food	0.064	5,554	-4.62%

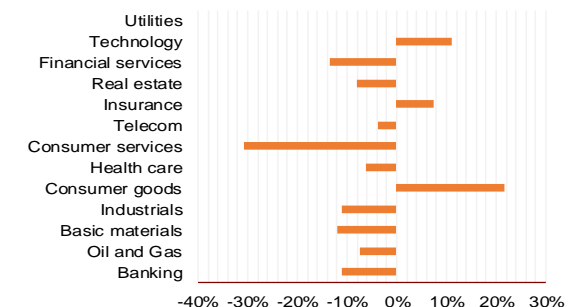
Today's Top 5 by Value	Close KD	DTD Chg	Trade Val Mn(KD)
Kuwait Finance House	0.694	1.76%	11.77
National Bank of Kuwait	0.899	1.01%	6.58
Aayan Leasing and Investment	0.093	4.49%	5.09
Kuwait International Bank	0.198	4.21%	4.43
Gulf Bank	0.231	2.67%	4.04

Top 5 by Volume	Close KD	DTD Chg	Trade Vol Mn(Shrs)
Investors Holding Group	0.018	7.14%	72.00
Aayan Leasing and Investment	0.093	4.49%	55.49
Arzan Financial Group for I	0.055	-1.09%	25.64
Sokouk Holding	0.031	5.17%	23.05
Kuwait International Bank	0.198	4.21%	22.88

Sector	Close	DTD Chg Net	DTD (%)	YTD (%)	52W High	52W Low	MKT CAP Bn (KD)	PBV (X)	PE (X)	DY (%)
Banking	1,319.14	14.240	1.09%	-11.0%	1,536.8	986.4	19.22	1.75	16.02	3.3%
Oil and Gas	1,146.64	0.700	0.06%	-7.4%	1,372.2	985.7	0.23	0.83	26.84	5.3%
Basic materials	797.52	0.180	0.02%	-12.1%	992.5	561.7	0.67	0.96	14.66	7.5%
Industrials	826.48	4.670	0.57%	-11.0%	937.5	602.9	2.82	0.90	13.44	4.9%
Consumer goods	775.75	9.550	1.25%	21.6%	810.7	548.6	0.23	1.54	94.02	2.2%
Health care	829.21	0.000	0.00%	-6.3%	921.9	815.0	0.41	4.19	48.62	1.0%
Consumer services	742.13	-4.330	-0.58%	-30.8%	1,083.1	674.8	0.38	0.85	35.64	4.7%
Telecom	1,074.17	4.480	0.42%	-3.8%	1,116.7	802.2	3.29	1.55	11.31	5.6%
Insurance	1,024.95	14.400	1.42%	7.5%	1,024.3	901.0	0.37	0.77	8.71	5.7%
Real estate	974.40	5.610	0.58%	-8.0%	1,083.4	763.2	2.05	0.67	24.00	2.4%
Financial services	934.79	5.150	0.55%	-13.5%	1,097.0	801.4	2.55	0.73	16.51	4.1%
Technology	535.44	11.640	2.22%	11.2%	625.7	371.0	0.01	0.58	-71.39	5.4%
Utilities	881.58	2.630	0.30%	0.0%	1,042.1	781.6	0.37	4.81	29.96	0.0%
	5,624.39	46.62	0.84%	-10.5%	6,416.4	4,339.6	32.59	1.30	15.74	3.74%



YTD Sector Performance %



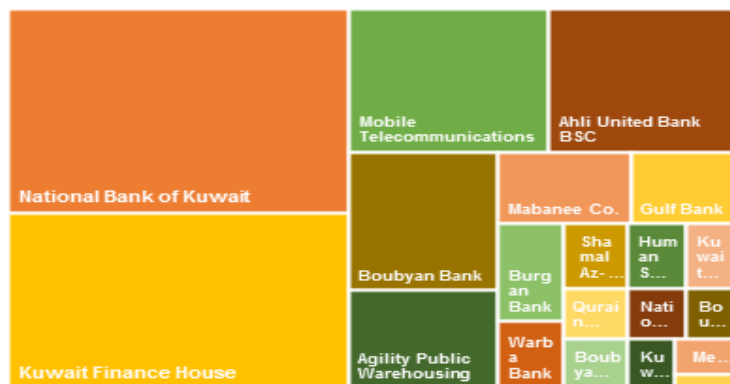
# DAILY MARKET COVERAGE REPORT

## NIC MENA SECURITIES - RESEARCH AND STUDIES DEP

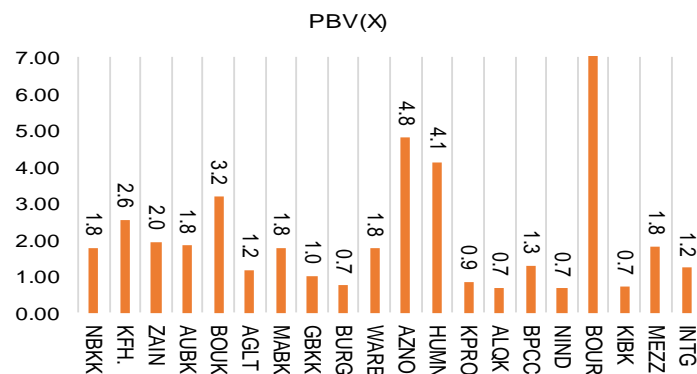


Premier Market	Price			Valuation Multiples			MKT Cap	Price Performance		Trading Indicators		ROE	ROA	52 Week (KD)	
	Close (KD)	Day Δ	Day % Δ	PBV(X)	PE(X)	DY%	Mn KD	MTD(%)	YTD (%)	Value (Mn KD)	(Mn Shrs)	(%)	(%)	High	Low
National Bank of Kuwait	0.899	0.009	1.01%	1.78	15.21	3.5%	6,105	5%	-12%	6.58	7.34	11.7%	1.4%	1.062	0.654
Kuwait Finance House	0.694	0.012	1.76%	2.56	20.98	2.4%	5,267	11%	-6%	11.77	17.03	12.2%	1.3%	0.761	0.473
Mobile Telecommunications	0.586	0.001	0.17%	1.95	11.69	5.3%	2,536	-1%	-2%	3.58	6.09	16.7%	4.6%	0.604	0.407
Ahli United Bank BSC	0.245	0.001	0.41%	1.85	10.79	5.0%	2,365	5%	-17%	3.48	14.18	17.1%	1.8%	0.311	0.160
Boubyan Bank	0.604	0.003	0.50%	3.18	29.19	1.0%	1,829	4%	-1%	1.20	1.99	10.9%	1.2%	0.638	0.380
Agility Public Warehousing	0.678	0.007	1.04%	1.18	14.95	2.7%	1,297	8%	-5%	2.01	2.97	7.9%	4.2%	0.748	0.357
Mabane Co.	0.761	0.003	0.40%	1.78	14.91	1.4%	841	19%	-11%	0.94	1.24	11.9%	5.8%	0.877	0.434
Gulf Bank	0.231	0.006	2.67%	1.01	10.54	4.3%	671	8%	-24%	4.04	17.67	9.6%	1.0%	0.317	0.180
Burgan Bank	0.213	0.006	2.90%	0.74	6.59	5.4%	558	8%	-30%	1.82	8.64	11.3%	1.2%	0.324	0.175
Warba Bank	0.244	0.001	0.41%	1.76	23.24	0.0%	384	23%	-6%	0.69	2.82	7.6%	0.5%	0.279	0.164
Shamal Az-Zour Al-Oula Power & Water	0.335	0.001	0.30%	4.81	29.96	0.0%	369	5%	0%	2.46	7.36	16.1%	2.3%	0.500	0.297
Human Soft Holding	2.710	-0.065	-2.34%	4.10	9.19	6.8%	330	7%	-10%	0.47	0.17	44.6%	30.3%	3.470	1.944
Kuwait Projects Company Holding	0.159	0.001	0.63%	0.85	9.60	5.8%	288	7%	-26%	0.48	3.02	8.9%	0.3%	0.225	0.147
Qurain Petrochemical Industries	0.282	0.001	0.36%	0.69	10.20	5.4%	288	-1%	-9%	0.14	0.49	6.7%	3.6%	0.323	0.163
Boubyan Petrochemical	0.568	-0.001	-0.18%	1.28	24.23	9.1%	286	6%	-15%	0.21	0.38	5.3%	2.1%	0.800	0.395
National Industries Group Holding	0.178	0.003	1.71%	0.67	5.48	6.1%	254	15%	-26%	2.53	14.23	12.3%	3.7%	0.247	0.121
Boursa Kuwait Securities Co	1.138	0.022	1.97%	7.12	23.82	0.0%	228	0%	0%	1.74	1.54	29.9%	26.5%	1.210	0.990
Kuwait International Bank	0.198	0.008	4.21%	0.72	11.77	5.1%	202	14%	-25%	4.43	22.88	6.1%	0.6%	0.270	0.162
Mezzan Holding	0.630	0.008	1.29%	1.82	34.04	2.7%	192	-3%	26%	0.34	0.54	5.3%	2.2%	0.665	0.428
Integrated Holding	0.382	0.002	0.53%	1.23	10.64	10.5%	84	9%	-31%	0.08	0.22	11.5%	8.5%	0.600	0.342
<b>Total</b>		<b>61.94</b>	<b>1.00%</b>	<b>1.76</b>	<b>14.65</b>	<b>3.43%</b>	<b>24,374</b>	<b>6.6%</b>	<b>-10.6%</b>	<b>48.99</b>	<b>130.79</b>	<b>12.01%</b>	<b>1.56%</b>		

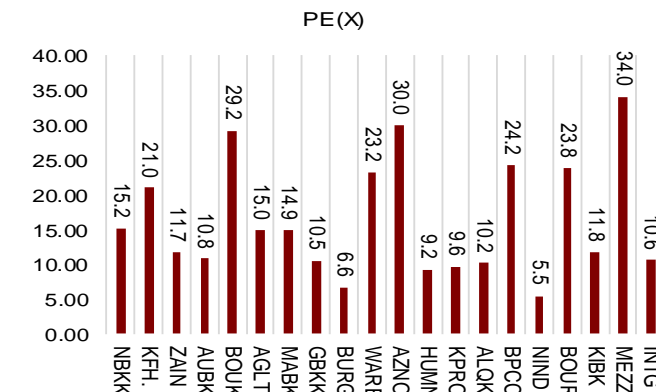
Market Capitalization



Price to Book Value

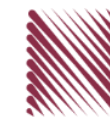


Price to Earning Value

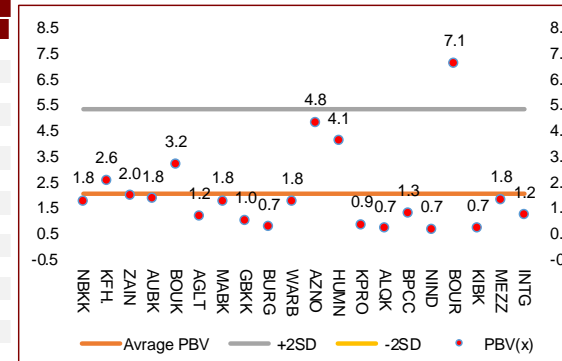


# DAILY MARKET COVERAGE REPORT

## NIC MENA SECURITIES - RESEARCH AND STUDIES DEP



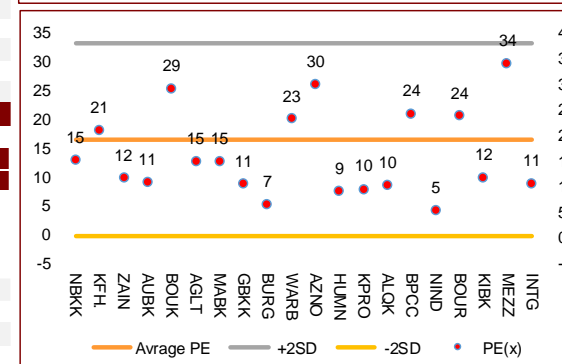
Premier Market	Price			Valuation Multiples			MKT Cap	Price Performance		ROE	ROA
Company	Close (KD)	Day Δ	Day % Δ	PBV(X)	PE(X)	DY%	Mn KD	MTD(%)	YTD (%)	(%)	(%)
National Bank of Kuwait	0.899	0.009	1.01%	1.78	15.2	3.5%	6,105	4.7%	-11.7%	11.7%	1.4%
Kuwait Finance House	0.694	0.012	1.76%	2.56	21.0	2.4%	5,267	10.7%	-6.0%	12.2%	1.3%
Mobile Telecommunications	0.586	0.001	0.17%	1.95	11.7	5.3%	2,536	-0.7%	-2.3%	16.7%	4.6%
Ahli United Bank BSC	0.245	0.001	0.41%	1.85	10.8	5.0%	2,365	5.2%	-16.6%	17.1%	1.8%
Boubyan Bank	0.604	0.003	0.50%	3.18	29.2	1.0%	1,829	4.5%	-1.1%	10.9%	1.2%
Agility Public Warehousing	0.678	0.007	1.04%	1.18	15.0	2.7%	1,297	8.5%	-4.8%	7.9%	4.2%
Mabane Co.	0.761	0.003	0.40%	1.78	14.9	1.4%	841	19.5%	-10.9%	11.9%	5.8%
Gulf Bank	0.231	0.006	2.67%	1.01	10.5	4.3%	671	8.0%	-24.1%	9.6%	1.0%
Burgan Bank	0.213	0.006	2.90%	0.74	6.6	5.4%	558	7.6%	-29.9%	11.3%	1.2%
Warba Bank	0.244	0.001	0.41%	1.76	23.2	0.0%	384	23.1%	-6.5%	7.6%	0.5%
Shamal Az-Zour Al-Oula Power & Water	0.335	0.001	0.30%	4.81	30.0	0.0%	369	4.7%	0.0%	16.1%	2.3%
Human Soft Holding	2.710	-0.065	-2.34%	4.10	9.2	6.8%	330	7.2%	-10.0%	44.6%	30.3%
Kuwait Projects Company Holding	0.159	0.001	0.63%	0.85	9.6	5.8%	288	6.7%	-26.4%	8.9%	0.3%
Qurain Petrochemical Industries	0.282	0.001	0.36%	0.69	10.2	5.4%	288	-1.1%	-9.0%	6.7%	3.6%
Boubyan Petrochemical	0.568	-0.001	-0.18%	1.28	24.2	9.1%	286	6.2%	-14.8%	5.3%	2.1%
National Industries Group Holding	0.178	0.003	1.71%	0.67	5.5	6.1%	254	14.7%	-25.7%	12.3%	3.7%
Boursa Kuwait Securities Co	1.138	0.022	1.97%	7.12	23.8	0.0%	228	0.0%	0.0%	29.9%	26.5%
Kuwait International Bank	0.198	0.008	4.21%	0.72	11.8	5.1%	202	14.0%	-24.9%	6.1%	0.6%
Mezzan Holding	0.630	0.008	1.29%	1.82	34.0	2.7%	192	-3.1%	26.0%	5.3%	2.2%
Integrated Holding	0.382	0.002	0.53%	1.23	10.6	10.5%	84	9.1%	-30.7%	11.5%	8.5%
<b>Total</b>		<b>61.94</b>	<b>1.00%</b>	<b>1.76</b>	<b>14.65</b>	<b>3.43%</b>	<b>24,374</b>	<b>6.6%</b>	<b>-10.6%</b>	<b>12.01%</b>	<b>1.56%</b>



Premier Market	Price			Moving Average		RSI	MKT Cap	Price Performance		52 Week (KD)	
Description	Close (KD)	Day Δ	Day % Δ	50 Day	200 Day	14 Day	Mn KD	MTD(%)	YTD (%)	High	Low
Premier Index	6,241	61.94	1.00%	5,692	5,891	84	24,374	6.6%	-10.6%	7,172	4,499

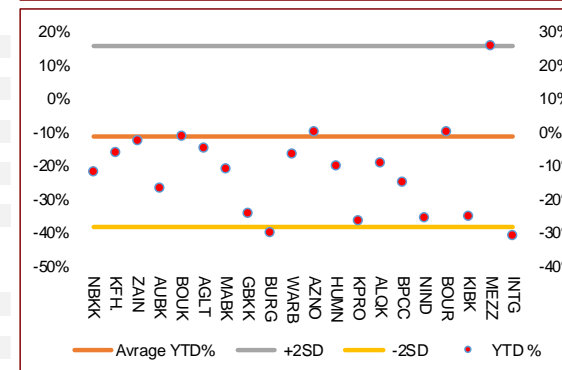
### Top 5 Performrs (Today's Price Change)

Kuwait International Bank	0.198	0.008	4.21%	0.174	0.206	88	202	14.0%	-24.9%	0.270	0.162
Burgan Bank	0.213	0.006	2.90%	0.194	0.232	94	558	7.6%	-29.9%	0.324	0.175
Gulf Bank	0.231	0.006	2.67%	0.208	0.238	85	671	8.0%	-24.1%	0.317	0.180
Boursa Kuwait Securities Co	1.138	0.022	1.97%	0.172	0.043	74	228	0.0%	0.0%	1.210	0.990
Kuwait Finance House	0.694	0.012	1.76%	0.613	0.639	93	5,267	10.7%	-6.0%	0.761	0.473



### Middle Performrs (Today's Price Change)

National Industries Group Holding	0.178	0.003	1.71%	0.161	0.186	88	254	14.7%	-25.7%	0.247	0.121
Mezzan Holding	0.630	0.008	1.29%	0.613	0.555	35	192	-3.1%	26.0%	0.665	0.428
Agility Public Warehousing	0.678	0.007	1.04%	0.637	0.613	85	1,297	8.5%	-4.8%	0.748	0.357
National Bank of Kuwait	0.899	0.009	1.01%	0.829	0.851	74	6,105	4.7%	-11.7%	1.062	0.654
Kuwait Projects Company Holding	0.159	0.001	0.63%	0.152	0.179	69	288	6.7%	-26.4%	0.225	0.147
Integrated Holding	0.382	0.002	0.53%	0.375	0.451	72	84	9.1%	-30.7%	0.600	0.342
Boubyan Bank	0.604	0.003	0.50%	0.559	0.543	74	1,829	4.5%	-1.1%	0.638	0.380
Ahli United Bank BSC	0.245	0.001	0.41%	0.212	0.228	66	2,365	5.2%	-16.6%	0.311	0.160
Warba Bank	0.244	0.001	0.41%	0.208	0.220	76	384	23.1%	-6.5%	0.279	0.164
Mabane Co.	0.761	0.003	0.40%	0.100	0.100	96	841	19.5%	-10.9%	1.210	0.996

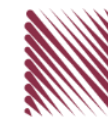


### Bottom 5 Performrs (Today's Price Change)

Human Soft Holding	2.710	-0.065	-2.34%	2.670	2.804	56	330	7.2%	-10.0%	3.470	1.944
Boubyan Petrochemical	0.568	-0.001	-0.18%	0.559	0.577	74	286	6.2%	-14.8%	0.800	0.395
Mobile Telecommunications	0.586	0.001	0.17%	0.568	0.548	61	2,536	-0.7%	-2.3%	0.604	0.407
Shamal Az-Zour Al-Oula Power & Water	0.335	0.001	0.30%	0.185	0.046	60	369	4.7%	0.0%	0.500	0.297
Qurain Petrochemical Industries	0.282	0.001	0.36%	0.283	0.267	52	288	-1.1%	-9.0%	0.323	0.163

# DAILY MARKET COVERAGE REPORT

## NIC MENA SECURITIES - RESEARCH AND STUDIES DEP



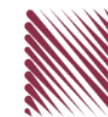
Banking Sector	Price			Valuation Multiples			MKT Cap	Price Performance		Trading Indicators		ROE	ROA	52 Week (KD)	
	Company	Close (KD)	Day Δ	Day % Δ	PBV(X)	PE(X)		DY%	Mn KD	MTD(%)	YTD (%)			Value (Mn KD)	(Mn Shrs)
National Bank of Kuwait	0.899	0.009	1.01%	1.78	15.21	3.5%	6,105	5%	-12%	6.58	7.34	11.7%	1.4%	1.062	0.654
Kuwait Finance House	0.694	0.012	1.76%	2.56	20.98	2.4%	5,267	11%	-6%	11.77	17.03	12.2%	1.3%	0.761	0.473
Ahli United Bank BSC	0.245	0.001	0.41%	1.85	10.79	5.0%	2,365	5%	-17%	3.48	14.18	17.1%	1.8%	0.311	0.160
Boubyan Bank	0.604	0.003	0.50%	3.18	29.19	1.0%	1,829	4%	-1%	1.20	1.99	10.9%	1.2%	0.638	0.380
Commercial Bank of Kuwait	0.500	0.000	0.00%	1.32	0.00	3.7%	965	0%	-5%	0.00	0.00	0.0%	0.0%	0.555	0.465
Gulf Bank	0.231	0.006	2.67%	1.01	10.54	4.3%	671	8%	-24%	4.04	17.67	9.6%	1.0%	0.317	0.180
Ahli United Bank	0.289	0.000	0.00%	1.24	10.24	4.7%	564	12%	-11%	0.23	0.80	12.1%	1.3%	0.330	0.225
Burgan Bank	0.213	0.006	2.90%	0.74	6.59	5.4%	558	8%	-30%	1.82	8.64	11.3%	1.2%	0.324	0.175
Warba Bank	0.244	0.001	0.41%	1.76	23.24	0.0%	384	23%	-6%	0.69	2.82	7.6%	0.5%	0.279	0.164
Al Ahli Bank of Kuwait	0.194	-0.004	-2.02%	0.56	10.86	7.2%	312	13%	-24%	0.98	5.04	5.1%	0.6%	0.307	0.156
Kuwait International Bank	0.198	0.008	4.21%	0.72	11.77	5.1%	202	14%	-25%	4.43	22.88	6.1%	0.6%	0.270	0.162
<b>Total Banking Sector - 11 Companies</b>				<b>1.75</b>	<b>16.02</b>	<b>3.3%</b>	<b>19,221</b>			<b>35.23</b>	<b>98.40</b>	<b>10.90%</b>	<b>1.21%</b>		

Basic materials	Price			Valuation Multiples			MKT Cap	Price Performance		Trading Indicators		ROE	ROA	52 Week (KD)	
	Company	Close (KD)	Day Δ	Day % Δ	PBV(X)	PE(X)		DY%	Mn KD	MTD(%)	YTD (%)			Value (Mn KD)	(Mn Shrs)
Qurain Petrochemical Industries	0.282	0.001	0.36%	0.69	10.20	5.4%	288	-1%	-9%	0.14	0.49	6.7%	3.6%	0.323	0.163
Boubyan Petrochemical	0.568	-0.001	-0.18%	1.28	24.23	9.1%	286	6%	-15%	0.21	0.38	5.3%	2.1%	0.800	0.395
Al Kout Industrial Projects	0.769	0.000	0.00%	2.50	16.21	6.5%	78	0%	-10%	0.00	0.00	15.4%	11.3%	0.850	0.769
Kuwait Foundry	0.255	-0.005	-1.92%	0.85	20.61	20.9%	18	7%	-24%	0.01	0.04	4.1%	3.8%	0.510	0.192
<b>Total Basic materials - 4 Companies</b>				<b>0.96</b>	<b>14.66</b>	<b>7.5%</b>	<b>671</b>			<b>0.36</b>	<b>0.90</b>	<b>6.57%</b>	<b>5.07%</b>		

Consumer goods	Price			Valuation Multiples			MKT Cap	Price Performance		Trading Indicators		ROE	ROA	52 Week (KD)	
	Company	Close (KD)	Day Δ	Day % Δ	PBV(X)	PE(X)		DY%	Mn KD	MTD(%)	YTD (%)			Value (Mn KD)	(Mn Shrs)
Mezzan Holding	0.630	0.008	1.29%	1.82	34.04	2.7%	192	-3%	26%	0.34	0.54	5.3%	2.2%	0.665	0.428
Livestock Transport and Trading	0.186	0.002	1.09%	0.97	33.15	0.1%	39	0%	6%	0.03	0.17	2.9%	2.0%	0.200	0.152
Danah Al Safat Foodstuff	0.012	0.000	0.00%	0.25	(0.30)	0.1%	1	0%	-25%	0.00	0.00	-84.8%	-43.2%	0.029	0.010
<b>Total Basic materials - 3 Companies</b>				<b>1.54</b>	<b>94.02</b>	<b>2.2%</b>	<b>232</b>			<b>0.37</b>	<b>0.70</b>	<b>1.64%</b>	<b>0.90%</b>		

# DAILY MARKET COVERAGE REPORT

## NIC MENA SECURITIES - RESEARCH AND STUDIES DEP



Consumer services	Price			Valuation Multiples			MKT Cap	Price Performance		Trading Indicators		ROE	ROA	52 Week (KD)	
Company	Close (KD)	Day Δ	Day % Δ	PBV(X)	PE(X)	DY%	Mn KD	MTD(%)	YTD (%)	Value (Mn KD)	(Mn Shrs)	(%)	(%)	High	Low
Jazeera Airways	0.575	0.001	0.17%	2.86	7.70	6.1%	115	2%	-48%	0.10	0.18	37.1%	9.0%	1.110	0.372
Kuwait National Cinema	0.725	0.000	0.00%	0.83	7.84	6.7%	67	8%	-31%	0.00	0.00	10.6%	7.2%	1.050	0.600
Oula Fuel Marketing	0.110	0.000	0.00%	0.66	11.51	5.4%	45	-1%	-13%	0.01	0.10	5.7%	3.2%	0.134	0.095
Al Soor Fuel Marketing	0.109	-0.002	-1.80%	0.67	12.76	4.5%	44	-1%	-13%	0.00	0.02	5.3%	3.7%	0.129	0.096
Sultan Center Food Products	0.056	-0.001	-2.29%	0.69	13.97	0.0%	31	1%	7%	0.00	0.05	4.9%	0.7%	0.060	0.036
IFA Hotels and Resorts	0.024	-0.001	-2.05%	0.86	(0.65)	0.0%	15	-4%	-57%	0.21	8.83	-131.5%	-8.1%	0.062	0.021
Jiyad Holding	0.041	0.000	-0.48%	0.37	8.22	0.0%	14	26%	6%	0.01	0.26	4.5%	2.8%	0.047	0.029
Kuwait Resorts	0.053	-0.001	-0.94%	0.36	9.53	0.0%	10	15%	-9%	0.04	0.74	3.8%	3.2%	0.060	0.038
Alrai Media Group	0.037	0.000	0.00%	0.83	(2.41)	0.0%	9	0%	-2%	0.00	0.00	-34.2%	-20.0%	0.045	0.031
Future Kid Entertainment and Real Estate	0.080	0.000	0.00%	0.46	30.22	14.4%	9	5%	-9%	0.00	0.00	1.5%	0.9%	0.110	0.069
Al Eid Food	0.064	-0.003	-4.62%	0.43	5.11	0.0%	8	15%	-3%	0.01	0.09	8.4%	6.1%	0.080	0.038
Kuwait Hotels	0.090	0.000	0.00%	1.26	(5.18)	0.0%	5	3%	-10%	0.00	0.00	-24.4%	-13.2%	0.101	0.069
Palms Agro Production	0.065	0.000	0.00%	0.55	(45.82)	15.3%	3	15%	62%	0.00	0.00	-1.2%	-0.9%	0.065	0.025
Kuwait Cable Vision	0.014	0.000	0.00%	0.52	(11.65)	0.0%	1	0%	0%	0.00	0.00	-4.5%	-3.0%	0.026	0.012
<b>Total Consumer services - 14 Companies</b>				<b>0.85</b>	<b>35.64</b>	<b>4.7%</b>	<b>375</b>			<b>0.39</b>	<b>10.26</b>	<b>2.38%</b>	<b>2.72%</b>		

Financial services	Price			Valuation Multiples			MKT Cap	Price Performance		Trading Indicators		ROE	ROA	52 Week (KD)	
Company	Close (KD)	Day Δ	Day % Δ	PBV(X)	PE(X)	DY%	Mn KD	MTD(%)	YTD (%)	Value (Mn KD)	(Mn Shrs)	(%)	(%)	High	Low
Egypt Kuwait Holding	0.365	-0.005	-1.35%	2.16	12.32	5.4%	374	-2%	-19%	0.00	0.00	17.6%	7.1%	0.500	0.318
Kuwait Projects Company Holding	0.159	0.001	0.63%	0.85	9.60	5.8%	288	7%	-26%	0.48	3.02	8.9%	0.3%	0.225	0.147
National Industries Group Holding	0.178	0.003	1.71%	0.67	5.48	6.1%	254	15%	-26%	2.53	14.23	12.3%	3.7%	0.247	0.121
Boursa Kuwait Securities Co	1.138	0.022	1.97%	7.12	23.82	0.0%	228	0%	0%	1.74	1.54	29.9%	26.5%	1.210	0.990
GFH Financial Group	0.051	0.000	0.40%	0.55	6.92	5.6%	172	0%	-26%	0.01	0.16	8.0%	1.3%	0.074	0.042
National Investments	0.142	0.000	0.00%	0.63	10.56	5.7%	113	19%	3%	0.62	4.34	5.9%	5.0%	0.158	0.080
Tamdeen Investment	0.310	0.000	0.00%	0.38	12.86	3.8%	106	24%	-10%	0.00	0.01	3.0%	2.2%	0.400	0.199
Alimtiiaz Investment Group	0.098	0.002	2.41%	0.46	5.09	8.1%	100	14%	-23%	0.54	5.62	9.1%	5.2%	0.137	0.071
Commercial Facilities	0.185	-0.001	-0.54%	0.57	7.13	9.1%	94	1%	-15%	0.05	0.26	8.0%	4.2%	0.235	0.179
Aayan Leasing and Investment	0.093	0.004	4.49%	1.09	(5.11)	1.9%	75	57%	99%	5.09	55.49	-21.4%	-4.9%	0.102	0.032
Kuwait Investment	0.131	0.004	3.15%	0.57	4.10	7.7%	72	16%	-13%	0.44	3.41	13.9%	6.0%	0.172	0.095
Noor Financial Investment	0.174	0.002	1.16%	1.06	8.51	2.8%	69	7%	46%	0.23	1.34	12.5%	7.5%	0.184	0.076

# DAILY MARKET COVERAGE REPORT

## NIC MENA SECURITIES - RESEARCH AND STUDIES DEP



Financial services	Price			Valuation Multiples			MKT Cap	Price Performance		Trading Indicators		ROE	ROA	52 Week (KD)		
	Company	Close (KD)	Day Δ	Day % Δ	PBV(X)	PE(X)	DY%	Mn KD	MTD(%)	YTD (%)	Value (Mn KD)	(Mn Shrs)	(%)	(%)	High	Low
Arzan Financial Group for Financing and Invest	0.055	-0.001	-1.09%	0.44	39.70	0.0%	44	-6%	132%	1.40	25.64	1.1%	0.7%	0.064	0.022	
Gulf Investment House	0.100	0.000	0.20%	1.13	185.34	0.0%	41	8%	56%	0.09	0.91	0.6%	0.5%	0.108	0.038	
Kuwait Financial Centre	0.084	0.002	1.94%	0.42	5.77	5.9%	40	4%	-21%	0.12	1.42	7.3%	3.5%	0.121	0.070	
Al Bareeq Holding	0.079	0.000	0.00%	0.83	15.80	0.0%	35	-25%	-21%	0.00	0.00	5.2%	5.0%	0.110	0.079	
Arabi Group Holdings	0.198	0.000	0.00%	1.07	(19.90)	0.0%	33	0%	-28%	0.00	0.00	-5.4%	-0.6%	0.337	0.079	
Kuwait and Middle East Financial Investment	0.115	-0.003	-2.54%	1.87	45.93	0.0%	30	0%	28%	0.01	0.11	4.1%	3.2%	0.138	0.063	
Umm Al Qaiwain General Investment Co	0.072	0.000	0.00%	0.48	13.53	5.1%	26	-19%	8%	0.00	0.04	3.6%	3.3%	0.096	0.052	
Privatization Holding	0.042	0.000	-0.47%	0.31	(37.87)	0.0%	26	0%	-15%	0.04	0.92	-0.8%	-0.5%	0.059	0.037	
Asiya Capital Investments	0.033	0.000	-0.30%	0.35	16.96	0.2%	26	6%	-20%	0.01	0.36	2.1%	2.0%	0.041	0.029	
Securities House	0.045	-0.001	-1.11%	0.61	(65.35)	0.0%	25	11%	-2%	0.16	3.56	-0.9%	-0.7%	0.050	0.027	
KAMCO Investment	0.074	0.002	2.22%	0.45	8.33	0.0%	25	5%	-18%	0.13	1.79	5.4%	2.3%	0.111	0.060	
Inoest BSC Public	0.077	0.001	0.79%	0.53	10.32	7.7%	23	36%	21%	0.19	2.52	5.2%	2.9%	0.080	0.044	
Coast Investment and Development	0.035	0.000	-0.86%	0.37	34.48	0.0%	20	3%	-12%	0.02	0.47	1.1%	1.0%	0.045	0.026	
First Investment	0.030	0.000	1.01%	0.47	(0.41)	0.0%	20	0%	-13%	0.03	0.85	-113.6%	-62.0%	0.045	0.022	
Al Madar Finance and Investment	0.086	-0.003	-3.04%	0.78	12.87	0.0%	18	2%	-6%	0.09	1.03	6.1%	5.0%	0.148	0.062	
Bayan Investment	0.045	-0.001	-1.96%	0.45	(23.25)	0.0%	16	-6%	18%	0.00	0.06	-1.9%	-0.8%	0.053	0.031	
Manazel Holding	0.034	0.000	-0.87%	0.75	22.05	0.0%	15	4%	-12%	0.08	2.26	3.4%	0.8%	0.048	0.021	
Al Manar Financing and Leasing	0.049	0.002	4.26%	0.45	12.63	1.0%	15	5%	-5%	0.00	0.00	3.5%	2.7%	0.060	0.037	
Kuwait Finance and Investment	0.045	0.000	-0.44%	0.36	20.21	0.0%	14	0%	-9%	0.00	0.01	1.8%	1.2%	0.058	0.038	
National International Holding	0.061	0.000	-0.16%	0.32	7.31	4.8%	13	0%	-17%	0.06	0.96	4.4%	3.3%	0.081	0.051	
Osoul Investment	0.081	0.000	-0.25%	0.61	6.76	0.0%	12	-4%	7%	0.01	0.08	9.0%	8.2%	0.121	0.070	
UniCap Investment and Finance	0.048	0.001	1.91%	0.48	(23.98)	0.0%	11	29%	-13%	0.02	0.34	-2.0%	-1.0%	0.057	0.035	
Amar Finance and Leasing	0.056	0.000	0.00%	0.63	46.88	0.0%	11	9%	47%	0.00	0.00	1.3%	1.2%	0.064	0.037	
Gulf North Africa Holding	0.060	0.001	0.85%	0.79	76.66	0.0%	9	7%	-4%	0.00	0.06	1.0%	0.6%	0.062	0.052	
International Financial Advisors	0.031	0.000	0.00%	0.93	(0.42)	2.1%	8	0%	-42%	0.00	0.00	-222.8%	-19.3%	0.060	0.027	
Al Salam Group Holding	0.029	0.002	6.74%	0.25	215.16	0.0%	8	23%	-3%	0.38	13.45	0.1%	0.1%	0.033	0.018	
Amwal International Investment	0.036	0.000	0.00%	0.66	13.16	0.0%	6	-1%	19%	0.00	0.00	5.0%	2.6%	0.053	0.030	
Credit Rating and Collection	0.032	-0.001	-1.56%	0.97	(21.20)	0.0%	5	-11%	58%	0.00	0.00	-4.6%	-4.3%	0.035	0.019	
Al Madina for Finance and Investment	0.013	0.000	0.77%	0.44	(2.46)	0.0%	5	22%	-13%	0.11	8.81	-17.9%	-7.7%	0.019	0.009	
Ekttitab Holding	0.015	0.000	-0.67%	0.36	(10.49)	0.0%	5	16%	-1%	0.00	0.11	-3.4%	-3.0%	0.017	0.010	
Warba Capital Holding	0.047	0.000	0.00%	0.52	(7.45)	0.0%	5	-6%	-27%	0.00	0.00	-7.0%	-6.2%	0.071	0.042	
National Consumer Holding	0.048	-0.003	-5.33%	0.53	236.14	0.0%	4	-12%	-13%	0.02	0.34	0.2%	0.2%	0.100	0.010	
Kuwait Syrian Holding Co	0.026	0.001	1.96%	0.22	(13.28)	0.0%	5	-3%	-18%	0.01	0.49	-1.7%	-1.1%	0.043	0.022	
Al Deera Holding	0.016	0.000	0.00%	0.70	(9.02)	0.0%	3	0%	-20%	0.00	0.00	-7.7%	-1.7%	0.022	0.011	
Al Mal Investment Company	0.009	0.000	-1.08%	0.41	(0.86)	0.0%	3	2%	-7%	0.04	4.88	-47.6%	-23.3%	0.016	0.008	
Gulf Franchising Holding	0.050	0.000	0.00%	0.79	(2.18)	0.0%	2	-14%	-33%	0.00	0.00	-36.2%	-10.8%	0.160	0.001	
Tamkeen Holding	0.005	0.000	0.00%	0.05	(7.18)	0.0%	0	0%	0%	0.00	0.00	-0.7%	-0.7%	0.005	0.005	
<b>Total Financial services - 49 Companies</b>				<b>0.73</b>	<b>16.51</b>	<b>4.1%</b>	<b>2,550</b>				<b>14.76</b>	<b>160.93</b>	<b>4.42%</b>	<b>4.14%</b>		

# DAILY MARKET COVERAGE REPORT

## NIC MENA SECURITIES - RESEARCH AND STUDIES DEP



Health care	Price			Valuation Multiples			MKT Cap	Price Performance		Trading Indicators		ROE	ROA	52 Week (KD)	
Company	Close (KD)	Day Δ	Day % Δ	PBV(X)	PE(X)	DY%	Mn KD	MTD(%)	YTD (%)	Value (Mn KD)	(Mn Shrs)	(%)	(%)	High	Low
Al-Maidan Clinic for Oral Health Services	1.220	0.000	0.00%	7.90	47.78	0.6%	305	0%	0%	0.00	0.00	16.5%	10.9%	1.240	1.220
Advanced Technology	0.627	0.000	0.00%	1.63	51.04	2.4%	94	0%	-23%	0.00	0.00	3.2%	0.7%	0.900	0.580
Yiaco Medical	0.707	0.000	0.00%	6.06	52.72	0.0%	12	0%	0%	0.00	0.00	11.5%	0.6%	0.707	0.707
<b>Total Health care - 3 Companies</b>				<b>4.19</b>	<b>48.62</b>	<b>1.0%</b>	<b>411</b>			<b>0.00</b>	<b>0.00</b>	<b>8.61%</b>	<b>4.68%</b>		

Industrials	Price			Valuation Multiples			MKT Cap	Price Performance		Trading Indicators		ROE	ROA	52 Week (KD)	
Company	Close (KD)	Day Δ	Day % Δ	PBV(X)	PE(X)	DY%	Mn KD	MTD(%)	YTD (%)	Value (Mn KD)	(Mn Shrs)	(%)	(%)	High	Low
Agility Public Warehousing	0.678	0.007	1.04%	1.18	14.95	2.7%	1,297	8%	-5%	2.01	2.97	7.9%	4.2%	0.748	0.357
Human Soft Holding	2.710	-0.065	-2.34%	4.10	9.19	6.8%	330	7%	-10%	0.47	0.17	44.6%	30.3%	3.470	1.944
ALAFCO Aviation Lease and Finance	0.170	0.003	1.80%	0.51	9.15	5.9%	162	8%	-38%	0.98	5.76	5.5%	1.4%	0.278	0.138
Gulf Cable and Electrical Industries	0.718	0.016	2.28%	0.86	35.61	3.8%	151	11%	47%	0.55	0.77	2.4%	2.2%	0.742	0.390
Kuwait Cement	0.207	0.000	0.00%	0.71	36.74	7.2%	148	19%	-16%	0.20	0.98	1.9%	1.3%	0.270	0.144
Integrated Holding	0.382	0.002	0.53%	1.23	10.64	10.5%	84	9%	-31%	0.08	0.22	11.5%	8.5%	0.600	0.342
Kuwait Portland Cement	0.782	0.014	1.82%	1.05	10.33	12.6%	78	5%	-22%	0.06	0.08	10.2%	8.2%	1.190	0.683
Educational Holding Group	0.309	0.003	0.98%	1.79	9.78	4.8%	76	3%	-30%	0.01	0.02	18.3%	16.7%	0.475	0.228
United Projects for Aviation Services	0.465	0.000	0.00%	0.98	7.96	4.5%	74	0%	-9%	0.00	0.00	12.3%	7.8%	0.512	0.367
Heavy Engineering Industries and Shipbuilding	0.375	0.003	0.81%	1.08	6.02	7.8%	68	3%	-7%	0.21	0.57	18.0%	5.9%	0.419	0.298
National Industries	0.154	-0.002	-1.28%	0.64	12.55	6.4%	54	-6%	-7%	0.02	0.12	5.1%	3.8%	0.173	0.143
ACICO Industries	0.103	0.000	0.00%	0.33	13.41	4.8%	34	9%	-23%	0.02	0.15	2.5%	0.6%	0.139	0.081
Kuwait Company for Process Plant Constructi	0.310	-0.001	-0.32%	1.23	6.64	5.8%	33	-1%	28%	0.02	0.07	18.5%	7.7%	0.337	0.175
Ras Al Khaimah for White Cement and Constr	0.065	0.000	0.00%	0.51	19.94	8.4%	33	0%	0%	0.00	0.00	2.6%	2.0%	0.080	0.055
Gulf Cement	0.036	0.001	1.71%	0.35	(12.98)	11.7%	29	19%	-35%	0.00	0.05	-2.7%	-2.2%	0.060	0.029
Combined Group Contracting	0.171	0.001	0.59%	0.59	7.70	12.0%	28	10%	-31%	0.33	1.95	7.7%	1.2%	0.251	0.138
Sharjah Cement and Industrial Development	0.042	0.000	0.00%	0.21	25.32	12.4%	26	0%	0%	0.00	0.00	0.8%	0.6%	0.064	0.042
KGL Logistics	0.027	0.000	0.00%	0.20	4.45	0.1%	21	10%	-27%	0.00	0.00	4.6%	2.9%	0.043	0.023
Shuaiba Industrial	0.130	0.000	0.00%	0.72	40.15	7.6%	13	5%	-16%	0.00	0.00	1.8%	1.4%	0.180	0.122
Kuwait and Gulf Link Transport	0.046	0.001	1.10%	0.19	13.88	0.0%	13	3%	-30%	0.03	0.66	1.4%	0.4%	0.077	0.042
Fujairah Cement Industries	0.036	0.001	1.72%	0.15	17.22	11.8%	13	13%	-21%	0.00	0.03	0.8%	0.4%	0.052	0.029
National Cleaning	0.057	0.000	0.18%	0.34	7.64	8.9%	12	7%	-19%	0.01	0.14	4.4%	1.5%	0.088	0.047
Hilal Cement	0.114	0.010	9.62%	0.99	(9.37)	13.2%	12	-1%	14%	0.00	0.01	-10.6%	-6.2%	0.126	0.063
Mubarrad Holding	0.064	0.000	-0.47%	0.50	10.26	7.4%	10	15%	-28%	0.07	1.11	4.9%	4.1%	0.089	0.049
Specialities Group Holding	0.065	0.000	0.31%	0.35	7.67	0.0%	10	8%	-16%	0.01	0.17	4.5%	3.5%	0.078	0.050
National Ranges	0.014	0.000	-1.39%	0.26	(1.04)	0.0%	4	-12%	40%	0.07	4.88	-24.9%	-5.3%	0.018	0.007
Metal and Recycling	0.041	0.000	0.00%	0.34	(1.73)	0.0%	4	-6%	-18%	0.00	0.00	-19.7%	-10.1%	0.070	0.020
Salbookh Trading	0.036	0.000	1.14%	0.48	(2.07)	0.0%	4	30%	-29%	0.01	0.20	-23.2%	-15.9%	0.051	0.026
Equipment Holding	0.016	0.000	-2.42%	0.32	(185.92)	0.0%	2	9%	-26%	0.00	0.14	-0.2%	-0.1%	0.024	0.013
<b>Total Industrials - 29 Companies</b>				<b>0.90</b>	<b>13.44</b>	<b>4.9%</b>	<b>2,820</b>			<b>5.15</b>	<b>21.21</b>	<b>6.67%</b>	<b>5.05%</b>		



# DAILY MARKET COVERAGE REPORT

## NIC MENA SECURITIES - RESEARCH AND STUDIES DEP



<b>Insurance</b>	Price			Valuation Multiples			MKT Cap	Price Performance		Trading Indicators		ROE	ROA	52 Week (KD)	
Company	Close (KD)	Day Δ	Day % Δ	PBV(X)	PE(X)	DY%	Mn KD	MTD(%)	YTD (%)	Value (Mn KD)	(Mn Shrs)	(%)	(%)	High	Low
Gulf Insurance Group	0.649	0.029	4.68%	1.11	9.05	5.7%	121	6%	-2%	0.00	0.00	12.3%	1.7%	0.680	0.550
Al Ahleia Insurance	0.414	0.000	0.00%	0.78	8.34	8.1%	85	8%	2%	0.00	0.00	9.4%	3.3%	0.445	0.367
Kuwait Insurance	0.370	0.000	0.00%	0.61	7.17	6.4%	68	6%	12%	0.00	0.00	8.5%	4.6%	0.387	0.300
Kuwait Reinsurance	0.211	0.000	0.00%	0.80	9.03	2.1%	43	8%	53%	0.00	0.00	8.9%	3.2%	0.211	0.126
Bahrain Kuwait Insurance	0.200	0.000	0.00%	0.93	12.87	6.1%	28	0%	0%	0.00	0.00	7.2%	1.1%	0.200	0.200
Warba Insurance	0.079	0.000	-0.13%	0.34	11.14	0.0%	13	0%	30%	0.00	0.01	3.1%	1.0%	0.094	0.051
First Takaful Insurance	0.040	0.000	0.00%	0.48	5.03	0.0%	4	-1%	4%	0.00	0.00	9.6%	5.9%	0.056	0.031
Wethaq Takaful Insurance	0.023	-0.001	-3.77%	0.21	(29.11)	0.0%	3	-4%	-8%	0.03	1.50	-0.7%	-0.7%	0.035	0.018
<b>Total Insurance - 8 Companies</b>				<b>0.77</b>	<b>8.71</b>	<b>5.7%</b>	<b>366</b>			<b>0.04</b>	<b>1.51</b>	<b>8.86%</b>	<b>3.00%</b>		

<b>Oil and Gas</b>	Price			Valuation Multiples			MKT Cap	Price Performance		Trading Indicators		ROE	ROA	52 Week (KD)	
Company	Close (KD)	Day Δ	Day % Δ	PBV(X)	PE(X)	DY%	Mn KD	MTD(%)	YTD (%)	Value (Mn KD)	(Mn Shrs)	(%)	(%)	High	Low
National Petroleum Services	1.100	0.000	0.00%	2.62	9.38	6.4%	107	10%	-6%	0.00	0.00	27.9%	23.6%	1.389	0.903
Independent Petroleum Group	0.430	0.000	0.00%	0.79	11.72	7.0%	78	-4%	-11%	0.01	0.02	6.8%	2.2%	0.497	0.375
Burgan for Well Drilling Trading and Maintenanc	0.081	0.001	1.25%	0.29	8.23	0.0%	19	18%	1%	0.00	0.00	3.6%	1.1%	0.098	0.060
Energy House Holding	0.021	0.000	-0.48%	0.65	(2.87)	0.0%	16	5%	-8%	0.00	0.02	-22.5%	-17.0%	0.036	0.014
Gulf Petroleum Investment	0.020	0.000	0.52%	0.22	(6.28)	0.0%	9	1%	-3%	0.22	11.52	-3.4%	-2.3%	0.023	0.012
Senergy Holding	0.018	0.000	-1.63%	0.36	(0.76)	0.0%	4	8%	-20%	0.00	0.00	-47.9%	-30.4%	0.027	0.014
<b>Total Oil and Gas - 6 Companies</b>				<b>0.83</b>	<b>26.84</b>	<b>5.3%</b>	<b>231</b>			<b>0.23</b>	<b>11.56</b>	<b>3.10%</b>	<b>2.18%</b>		

<b>Real estate</b>	Price			Valuation Multiples			MKT Cap	Price Performance		Trading Indicators		ROE	ROA	52 Week (KD)	
Company	Close (KD)	Day Δ	Day % Δ	PBV(X)	PE(X)	DY%	Mn KD	MTD(%)	YTD (%)	Value (Mn KD)	(Mn Shrs)	(%)	(%)	High	Low
Mabane Co.	0.761	0.003	0.40%	1.78	14.91	1.4%	841	19%	-11%	0.94	1.24	11.9%	5.8%	0.877	0.434
Salhia Real Estate	0.397	0.006	1.53%	1.20	9.12	5.0%	196	0%	-5%	0.26	0.67	13.2%	5.8%	0.460	0.328
Commercial Real Estate	0.103	0.000	0.00%	0.63	12.76	5.6%	186	10%	12%	0.00	0.01	5.0%	2.7%	0.111	0.083
National Real Estate	0.075	0.001	0.80%	0.42	9.90	0.0%	113	7%	-13%	0.53	7.04	4.2%	2.4%	0.090	0.058
Tamdeen Real Estate	0.265	0.000	0.00%	0.38	12.93	3.8%	107	4%	-19%	0.00	0.01	3.0%	2.2%	0.343	0.241
Kuwait Real Estate	0.099	0.001	0.51%	0.69	12.58	0.4%	89	6%	-6%	0.07	0.75	5.5%	2.2%	0.115	0.070
United Real Estate	0.051	0.000	0.00%	0.29	(7.59)	0.0%	55	2%	-17%	0.00	0.00	-3.9%	-1.2%	0.063	0.045
First Dubai for Real Estate Development	0.042	0.001	1.44%	0.57	46.50	0.9%	42	11%	19%	0.03	0.77	1.2%	1.0%	0.055	0.027
Al Mazaya Holding	0.055	0.000	-0.36%	0.43	(3.96)	0.1%	35	9%	-7%	0.04	0.71	-11.0%	-3.8%	0.067	0.047
Ajial Real Estate Entertainment	0.138	-0.006	-4.17%	0.21	13.34	0.0%	27	5%	-20%	0.16	1.14	1.6%	1.4%	0.213	0.115
Injazzat Real Estate Development	0.079	0.000	0.00%	0.51	(3.79)	8.7%	26	7%	-1%	0.00	0.00	-13.4%	-7.0%	0.091	0.061

# DAILY MARKET COVERAGE REPORT

## NIC MENA SECURITIES - RESEARCH AND STUDIES DEP



Real estate Company	Price			Valuation Multiples			MKT Cap	Price Performance		Trading Indicators		ROE	ROA	52 Week (KD)	
	Close (KD)	Day Δ	Day % Δ	PBV(X)	PE(X)	DY%	Mn KD	MTD(%)	YTD (%)	Value (Mn KD)	(Mn Shrs)	(%)	(%)	High	Low
Munshaat Real Estate Projects	0.081	0.011	15.00%	0.55	29.67	2.6%	26	70%	14%	0.01	0.19	1.8%	0.7%	0.090	0.045
Aayan Real Estate	0.061	0.001	0.83%	0.35	11.84	7.9%	25	18%	-17%	0.08	1.38	3.0%	1.9%	0.080	0.048
Al Argan International Real Estate	0.093	0.000	0.00%	0.27	30.01	5.3%	24	6%	-12%	0.00	0.00	0.9%	0.3%	0.135	0.060
Al-Enmaa Real Estate	0.050	0.000	-0.79%	0.50	13.30	0.0%	23	16%	-20%	0.11	2.27	3.8%	2.4%	0.079	0.037
Ream Real Estate	0.204	0.000	0.00%	1.56	(8.21)	1.1%	22	0%	132%	0.00	0.00	-19.0%	-10.1%	0.204	0.060
Arkan Al Kuwait Real Estate	0.086	0.000	0.00%	0.61	9.26	9.1%	21	2%	-4%	0.00	0.00	6.6%	3.5%	0.100	0.076
Kuwait Business Town Real Estate	0.031	0.001	1.97%	0.28	7.92	0.2%	19	30%	-30%	0.05	1.73	3.6%	2.7%	0.046	0.022
Dalqan Real Estate	0.318	0.000	0.00%	2.91	58.98	0.0%	19	0%	0%	0.00	0.00	4.9%	4.9%	0.318	0.318
Sokouk Holding	0.031	0.002	5.17%	0.38	(5.10)	0.0%	17	31%	-13%	0.69	23.05	-7.4%	-4.7%	0.040	0.022
Tijara and Realestate Investment	0.039	-0.002	-4.68%	0.36	10.18	5.1%	14	-8%	-23%	0.00	0.00	3.6%	1.9%	0.055	0.034
Al-Arabiya Real Estate	0.026	0.000	1.54%	0.23	8.00	2.4%	13	15%	-11%	0.02	0.82	2.9%	1.1%	0.033	0.020
Aqar Real Estate Investments	0.060	0.000	0.00%	0.43	5.01	8.3%	13	-8%	-25%	0.00	0.00	8.7%	7.3%	0.089	0.058
Investors Holding Group	0.018	0.001	7.14%	0.91	(0.85)	0.0%	11	34%	125%	1.26	72.00	-106.5%	-57.2%	0.032	0.007
Mashaer Holding	0.062	0.002	3.01%	0.47	6.64	0.0%	11	14%	-20%	0.09	1.51	7.1%	5.0%	0.086	0.048
Dar Al Thuraya Real Estate	0.071	-0.008	-9.64%	0.68	18.77	0.0%	10	-41%	7%	0.01	0.13	3.6%	3.6%	0.190	0.040
Osos Holding Group	0.090	0.000	0.00%	0.72	6.79	10.5%	9	-5%	-10%	0.00	0.00	10.5%	7.0%	0.118	0.083
Al Massaleh Real Estate	0.037	0.002	4.56%	0.41	(5.12)	0.0%	9	21%	-5%	0.01	0.29	-8.1%	-1.9%	0.040	0.026
Abyaar Real Estate Development	0.007	0.000	0.00%	0.21	(0.51)	0.0%	8	-1%	-8%	0.01	1.55	-40.9%	-12.4%	0.013	0.005
Kuwait Remal Real Estate	0.022	0.000	0.92%	0.33	(3.02)	0.0%	7	52%	-10%	0.00	0.18	-11.0%	-3.9%	0.027	0.013
Kuwait Real Estate Holding	0.026	-0.001	-1.91%	0.04	0.69	6.9%	5	1%	-10%	0.00	0.02	5.5%	2.2%	0.034	0.022
Taameer Real Estate Investment	0.020	0.000	-0.51%	0.29	(4.15)	0.0%	5	4%	-26%	0.01	0.39	-7.0%	-4.5%	0.034	0.013
Real Estate Trade Centers	0.031	0.000	0.00%	0.17	176.55	0.0%	4	22%	33%	0.00	0.00	0.1%	0.1%	0.050	0.018
Sanam Real Estate	0.032	0.001	4.52%	0.41	43.88	0.0%	4	0%	-25%	0.02	0.63	0.9%	0.9%	0.043	0.027
Mena Real Estate	0.029	0.000	-0.35%	0.20	(63.74)	0.0%	4	17%	-31%	0.05	1.68	-0.3%	-0.2%	0.043	0.021
Al Masaken International Real Estate Develop	0.035	0.003	9.87%	0.38	41.67	0.5%	3	10%	-22%	0.00	0.00	0.9%	0.4%	0.074	0.026
Ajwan Gulf Real Estate	0.011	0.000	0.00%	0.19	(7.68)	0.0%	2	0%	-29%	0.00	0.00	-2.5%	-2.2%	0.016	0.009
Effect Real Estate	0.021	0.000	0.00%	0.29	(8.85)	4.9%	2	0%	0%	0.00	0.00	-3.3%	-3.2%	0.021	0.021
Al Mudon International Real Estate	0.016	0.000	0.00%	0.12	(8.22)	0.0%	2	0%	-35%	0.00	0.00	-1.5%	-1.4%	0.029	0.015
<b>Total Real estate - 39 Companies</b>				<b>0.67</b>	<b>24.00</b>	<b>2.4%</b>	<b>2,050</b>			<b>4.49</b>	<b>120.18</b>	<b>2.79%</b>	<b>2.96%</b>		

# DAILY MARKET COVERAGE REPORT

NIC MENA SECURITIES - RESEARCH AND STUDIES DEP



Technology	Price			Valuation Multiples			MKT Cap	Price Performance		Trading Indicators		ROE	ROA	52 Week (KD)	
Company	Close (KD)	Day Δ	Day % Δ	PBV(X)	PE(X)	DY%	Mn KD	MTD(%)	YTD (%)	Value (Mn KD)	(Mn Shrs)	(%)	(%)	High	Low
Automated Systems	0.074	0.002	2.22%	0.58	(71.39)	5.4%	7	15%	11%	0.19	2.52	-0.8%	-0.7%	0.087	0.051
<b>Total Technology - 1 Companies</b>				<b>0.58</b>	<b>(71.39)</b>	<b>5.4%</b>	<b>7</b>			<b>0.19</b>	<b>2.52</b>	<b>-0.81%</b>	<b>-0.73%</b>		

Telecom	Price			Valuation Multiples			MKT Cap	Price Performance		Trading Indicators		ROE	ROA	52 Week (KD)	
Company	Close (KD)	Day Δ	Day % Δ	PBV(X)	PE(X)	DY%	Mn KD	MTD(%)	YTD (%)	Value (Mn KD)	(Mn Shrs)	(%)	(%)	High	Low
Mobile Telecommunications	0.586	0.001	0.17%	1.95	11.69	5.3%	2,536	-1%	-2%	3.58	6.09	16.7%	4.6%	0.604	0.407
Kuwait Telecommunications	0.860	0.015	1.78%	1.99	9.85	4.1%	429	2%	9%	0.02	0.03	20.2%	11.1%	0.870	0.680
National Mobile Telecommunications	0.620	0.005	0.81%	0.54	10.31	10.4%	311	7%	-25%	0.12	0.19	5.3%	2.4%	0.835	0.550
AAN Digital Services	0.012	0.000	-0.83%	0.36	39.14	0.0%	10	14%	-12%	0.09	7.42	0.9%	0.7%	0.021	0.009
Hayat Communications	0.058	-0.006	-9.55%	0.49	24.49	0.0%	5	-26%	-19%	0.00	0.01	2.0%	0.8%	0.098	0.030
<b>Telecom - 5 Companies</b>				<b>1.55</b>	<b>11.31</b>	<b>5.6%</b>	<b>3,291</b>			<b>3.81</b>	<b>13.74</b>	<b>13.70%</b>	<b>7.86%</b>		

Utilities	Price			Valuation Multiples			MKT Cap	Price Performance		Trading Indicators		ROE	ROA	52 Week (KD)	
Company	Close (KD)	Day Δ	Day % Δ	PBV(X)	PE(X)	DY%	Mn KD	MTD(%)	YTD (%)	Value (Mn KD)	(Mn Shrs)	(%)	(%)	High	Low
Shamal Az-Zour Al-Oula Power & Water	0.335	0.001	0.30%	4.81	29.96	0.0%	369	5%	0%	2.46	7.36	16.1%	2.3%	0.500	0.297
<b>Total Utilities - 1 Companies</b>				<b>4.81</b>	<b>29.96</b>	<b>0.0%</b>	<b>369</b>			<b>2.46</b>	<b>7.36</b>	<b>16.06%</b>	<b>2.26%</b>		

<b>Total Market 173 Companies</b>				<b>1.30</b>	<b>15.74</b>	<b>3.74%</b>	<b>32,594</b>			<b>67.47</b>	<b>449.26</b>	<b>8.26%</b>	<b>2.76%</b>		
-----------------------------------	--	--	--	-------------	--------------	--------------	---------------	--	--	--------------	---------------	--------------	--------------	--	--

## End of Report

The information contained in this document is proprietary to NIC and is for use only by the persons to whom it is issued. This document is confidential and may not be distributed either in part or in whole without the express agreement of NIC. It is intended solely for the use of the individual or entity to whom it is addressed and others authorized to receive it.

Note : ROE and ROA is calculated based on LTM net profit & shareholders' equity and LTM Operating Profits & Total Assets

Sources : National Investments Company Research and Studies Departments



شركة الاستثمار الوطنية  
NATIONAL INVESTMENTS COMPANY

Sharq, Al Mutanabi Street, Khaleejia Tower | P.O. Box 25667, Safat 13117, Kuwait

T.: +965 2226 6666 | Fax: +965 2226 6793 | [www.nic.com.kw](http://www.nic.com.kw)