

شركة الاستثمارات الوطنية
NATIONAL INVESTMENTS COMPANY

Bursa Kuwait – Daily Market Report
MENA Securities – Research & Studies Dep.
Tuesday, August 18, 2020

DAILY MARKET COVERAGE REPORT

NIC MENA SECURITIES - RESEARCH AND STUDIES DEP



Index	Close	DTD Chg Net	DTD (%)	YTD (%)	52W High	52W Low	MKT CAP Bn (KD)	PBV (X)	PE (X)	DY (%)
All Share Index	5,202.23	-40.41	-0.77%	-17.1%	6,416.43	4,339.58	30.02	1.16	14.56	4.06%
Premier Index	5,740.80	-57.18	-0.99%	-17.5%	7,172.32	4,498.65	22.22	1.61	13.43	3.76%
Main Index	4,136.61	-6.30	-0.15%	-15.8%	4,932.47	3,965.63	7.80	0.65	19.18	4.89%

Index	Value Mn(KD)	Volume (Mn share)
All Share Index	47.90	234.99
Premier Index	40.26	112.58
Main Index	7.63	122.41

Market Breadth	UP	Down	No Chg
All Share Index	40	50	82
Premier Index	2	12	4
Main Index	38	38	78

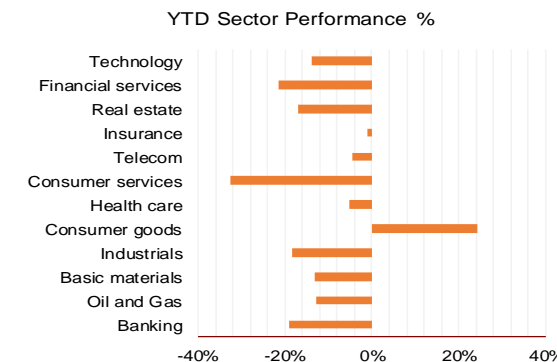
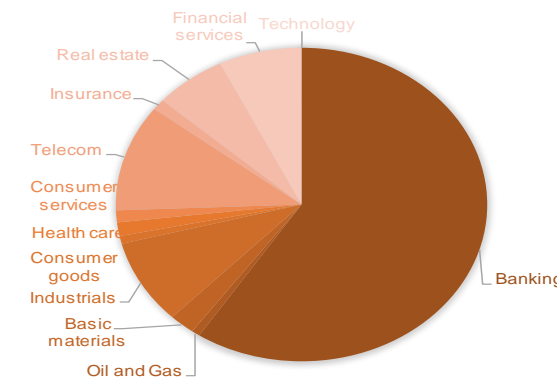
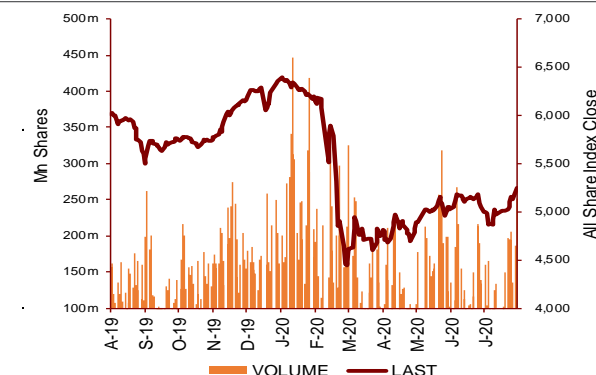
Today's Top 5 Gainer %	Close KD	Value KD	DTD (%)
Ream Real Estate	0.170	174	14.09%
Gulf Cement	0.038	940	9.91%
Arzan Financial Group for Fina	0.046	1,176,788	6.93%
Wethaq Takaful Insurance	0.026	3,038	6.07%
Amar Finance and Leasing	0.047	18	5.12%

Today's Top 5 Loser %	Close KD	Value KD	DTD (%)
Shamal Az-Zour Al-Ou	0.333	12,875,187	-12.60%
Kuwait Remal Real Es	0.014	22,444	-6.85%
UniCap Investment an	0.035	7,282	-6.67%
Jiyad Holding	0.032	5,134	-6.12%
Hilal Cement	0.065	83	-4.97%

Today's Top 5 by Value	Close KD	DTD Chg	Trade Val Mn(KD)
Shamal Az-Zour Al-Oula Power & Wa	0.333	-12.60%	12.88
Ahli United Bank BSC	0.221	-0.45%	7.09
Kuwait Finance House	0.613	-1.29%	4.16
National Bank of Kuwait	0.829	-0.96%	4.15
Mobile Telecommunications	0.589	-0.17%	3.07

Top 5 by Volume	Close KD	DTD Chg	Trade Vol Mn(Shrs)
Shamal Az-Zour Al-Ou	0.333	-12.60%	36.76
Ahli United Bank BSC	0.221	-0.45%	32.07
Arzan Financial Grou	0.046	6.93%	26.03
Gulf Petroleum Inves	0.018	0.55%	25.21
ALAFCO Aviation Leas	0.157	0.64%	10.41

Sector	Close	DTD Chg Net	DTD (%)	YTD (%)	52W High	52W Low	MKT CAP Bn (KD)	PBV (X)	PE (X)	DY (%)
Banking	1,202.09	-8.770	-0.72%	-18.9%	1,536.8	986.4	17.58	1.48	14.65	3.6%
Oil and Gas	1,078.61	-18.010	-1.64%	-12.9%	1,372.2	985.7	0.22	0.78	25.25	5.6%
Basic materials	789.64	-5.610	-0.71%	-13.0%	1,054.0	561.7	0.66	0.95	14.52	7.6%
Industrials	757.09	-5.670	-0.74%	-18.4%	937.5	602.9	2.58	0.82	12.32	5.4%
Consumer goods	792.42	13.240	1.70%	24.4%	784.3	548.6	0.24	1.57	96.04	2.2%
Health care	839.19	0.000	0.00%	-5.1%	931.0	815.0	0.42	4.24	49.21	1.0%
Consumer services	721.86	-7.670	-1.05%	-32.7%	1,083.1	674.8	0.37	0.83	34.68	4.8%
Telecom	1,066.22	-2.560	-0.24%	-4.5%	1,116.7	802.2	3.27	1.54	11.22	5.7%
Insurance	944.78	-13.490	-1.41%	-1.0%	988.8	901.0	0.33	0.70	7.92	6.3%
Real estate	877.68	-5.450	-0.62%	-17.1%	1,083.4	763.2	1.85	0.60	21.62	2.6%
Financial services	849.52	-0.250	-0.03%	-21.4%	1,097.0	801.4	2.14	0.62	14.74	4.9%
Technology	443.78	-3.630	-0.81%	-13.8%	625.7	371.0	0.01	0.48	-59.17	6.6%
Utilities	876.32	-126.310	-12.60%	0.0%	1,042.1	1,000.0	0.37	4.78	29.78	0.0%
							30.02	1.61	13.43	3.76%

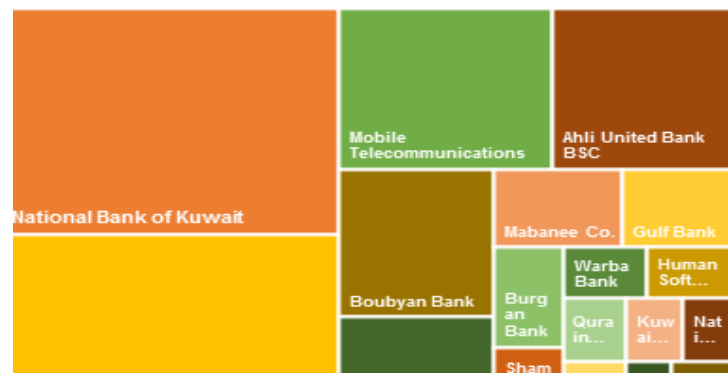


DAILY MARKET COVERAGE REPORT

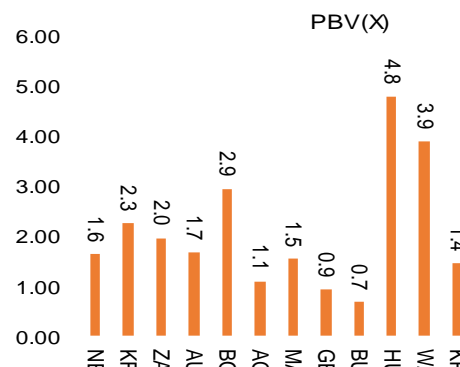
NIC MENA SECURITIES - RESEARCH AND STUDIES DEP



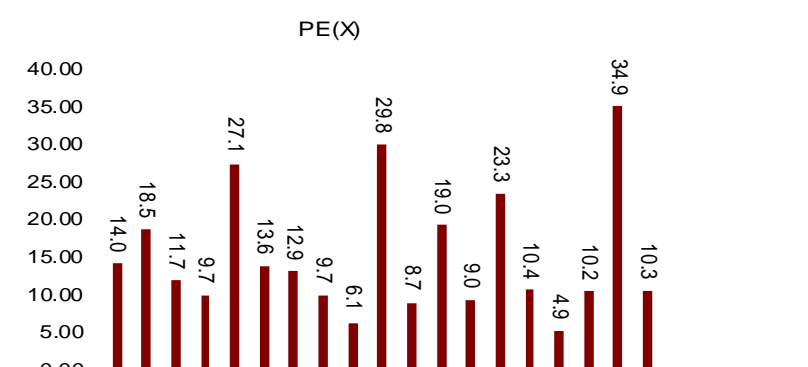
Premier Market	Price			Valuation Multiples			MKT Cap	Price Performance		Trading Indicators		ROE	ROA	52 Week (KD)	
	Close (KD)	Day Δ	Day % Δ	PBV(X)	PE(X)	DY%	Mn KD	MTD(%)	YTD (%)	Value (Mn KD)	(Mn Shrs)	(%)	(%)	High	Low
National Bank of Kuwait	0.829	-0.008	-0.96%	1.64	14.03	3.8%	5,630	5%	-18%	4.15	4.98	11.7%	1.4%	1.062	0.654
Kuwait Finance House	0.613	-0.008	-1.29%	2.26	18.53	2.7%	4,652	7%	-16%	4.16	6.74	12.2%	1.3%	0.761	0.473
Mobile Telecommunications	0.589	-0.001	-0.17%	1.96	11.75	5.3%	2,549	7%	-2%	3.07	5.20	16.7%	4.6%	0.604	0.407
Ahli United Bank BSC	0.221	-0.001	-0.45%	1.67	9.73	5.5%	2,133	18%	-25%	7.09	32.07	17.1%	1.8%	0.311	0.160
Boubyan Bank	0.560	0.000	0.00%	2.95	27.07	1.1%	1,696	5%	-8%	0.40	0.72	10.9%	1.2%	0.638	0.380
Agility Public Warehousing	0.618	-0.009	-1.44%	1.07	13.63	2.9%	1,183	-3%	-13%	3.03	4.90	7.9%	4.2%	0.748	0.357
Mabane Co.	0.658	-0.011	-1.64%	1.54	12.89	1.6%	727	9%	-23%	0.52	0.79	11.9%	5.8%	0.877	0.434
Gulf Bank	0.213	-0.001	-0.47%	0.93	9.72	4.7%	619	12%	-30%	0.99	4.67	9.6%	1.0%	0.317	0.180
Burgan Bank	0.196	0.001	0.51%	0.68	6.06	5.8%	513	9%	-36%	0.68	3.49	11.3%	1.2%	0.355	0.175
Shamal Az-Zour Al-Oula Power & Water	0.333	-0.048	-12.60%	4.78	29.78	0.0%	366	0%	0%	12.88	36.76	16.1%	2.3%	0.500	0.319
Human Soft Holding	2.574	-0.026	-1.00%	3.89	8.73	7.1%	313	-6%	-15%	0.51	0.20	44.6%	30.3%	3.470	1.944
Warba Bank	0.200	-0.003	-1.48%	1.44	19.05	0.0%	315	3%	-24%	0.46	2.30	7.6%	0.5%	0.279	0.164
Kuwait Projects Company Holding	0.149	0.000	0.00%	0.80	9.00	6.2%	270	1%	-31%	0.14	0.93	8.9%	0.3%	0.231	0.147
Boubyan Petrochemical	0.546	-0.003	-0.55%	1.23	23.30	9.5%	275	1%	-18%	0.20	0.36	5.3%	2.1%	0.818	0.395
Qurain Petrochemical Industries	0.288	-0.003	-1.03%	0.70	10.42	5.3%	294	7%	-7%	0.05	0.17	6.7%	3.6%	0.347	0.163
National Industries Group Holding	0.159	-0.001	-0.63%	0.60	4.90	6.8%	227	2%	-34%	0.21	1.32	12.3%	3.7%	0.252	0.121
Kuwait International Bank	0.172	0.000	0.00%	0.62	10.23	5.8%	175	4%	-34%	1.01	5.83	6.1%	0.6%	0.270	0.162
Mezzan Holding	0.645	0.013	2.06%	1.86	34.86	2.6%	196	11%	29%	0.63	0.97	5.3%	2.2%	0.661	0.428
Integrated Holding	0.370	0.000	0.00%	1.19	10.31	10.8%	81	-2%	-33%	0.07	0.19	11.5%	8.5%	0.600	0.360
Total				1.61	13.43	3.8%	22,215			40.26	112.58	12.0%	1.2%		



Price to Book Value



Price to Earning Value



DAILY MARKET COVERAGE REPORT

NIC MENA SECURITIES - RESEARCH AND STUDIES DEP



Premier Market	Price			Valuation Multiples			MKT Cap	Price Performance		ROE	ROA
Company	Close (KD)	Day Δ	Day % Δ	PBV(X)	PE(X)	DY%	Mn KD	MTD(%)	YTD (%)	(%)	(%)
National Bank of Kuwait	0.829	-0.008	-0.96%	1.64	14.0	3.8%	5,630	5%	-18%	11.7%	1.4%
Kuwait Finance House	0.613	-0.008	-1.29%	2.26	18.5	2.7%	4,652	7%	-16%	12.2%	1.3%
Mobile Telecommunications	0.589	-0.001	-0.17%	1.96	11.7	5.3%	2,549	7%	-2%	16.7%	4.6%
Ahli United Bank BSC	0.221	-0.001	-0.45%	1.67	9.7	5.5%	2,133	18%	-25%	17.1%	1.8%
Boubyan Bank	0.560	0.000	0.00%	2.95	27.1	1.1%	1,696	5%	-8%	10.9%	1.2%
Agility Public Warehousing	0.618	-0.009	-1.44%	1.07	13.6	2.9%	1,183	-3%	-13%	7.9%	4.2%
Mabane Co.	0.658	-0.011	-1.64%	1.54	12.9	1.6%	727	9%	-23%	11.9%	5.8%
Gulf Bank	0.213	-0.001	-0.47%	0.93	9.7	4.7%	619	12%	-30%	9.6%	1.0%
Shamal Az-Zour Al-Oula Power & Water	0.333	-0.048	-12.60%	4.78	29.8	0.0%	366	0%	0%	16.1%	2.3%
Burgan Bank	0.196	0.001	0.51%	0.68	6.1	5.8%	513	9%	-36%	11.3%	1.2%
Human Soft Holding	2.574	-0.026	-1.00%	3.89	8.7	7.1%	313	-6%	-15%	44.6%	30.3%
Warba Bank	0.200	-0.003	-1.48%	1.44	19.0	0.0%	315	3%	-24%	7.6%	0.5%
Kuwait Projects Company Holding	0.149	0.000	0.00%	0.80	9.0	6.2%	270	1%	-31%	8.9%	0.3%
Boubyan Petrochemical	0.546	-0.003	-0.55%	1.23	23.3	9.5%	275	1%	-18%	5.3%	2.1%
Qurain Petrochemical Industries	0.288	-0.003	-1.03%	0.70	10.4	5.3%	294	7%	-7%	6.7%	3.6%
National Industries Group Holding	0.159	-0.001	-0.63%	0.60	4.9	6.8%	227	2%	-34%	12.3%	3.7%
Kuwait International Bank	0.172	0.000	0.00%	0.62	10.2	5.8%	175	4%	-34%	6.1%	0.6%
Mezzan Holding	0.645	0.013	2.06%	1.86	34.9	2.6%	196	11%	29%	5.3%	2.2%
Integrated Holding	0.370	0.000	0.00%	1.19	10.3	10.8%	81	-2%	-33%	11.5%	8.5%
Total							22,215				

Premier Market	Price			Moving Average		RSI	MKT Cap	Price Performance		52 Week (KD)	
Discription	Close (KD)	Day Δ	Day % Δ	50 Day	200 Day	14 Day	Mn KD	MTD(%)	YTD (%)	High	Low
Premier Index	5,741	-57.180	-0.99%	5,534	5,941	84	22,215	0.027	-17.49%	7,172	4,499

Top 5 Performrs (Today's Price Change)

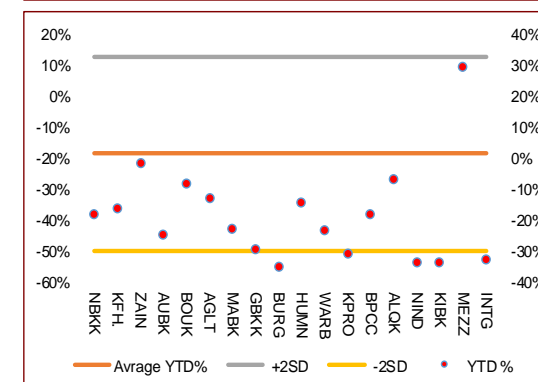
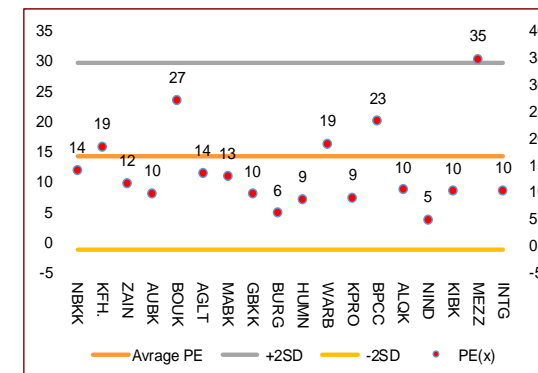
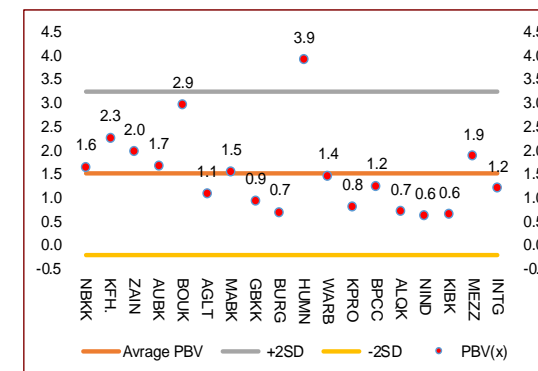
Mezzan Holding	0.645	0.013	2.06%	0.59	0.54	80.37	196.43	11%	29%	0.66	0.43
Burgan Bank	0.196	0.001	0.51%	0.19	0.25	78.13	513.27	9%	-36%	0.36	0.18
Boubyan Bank	0.560	0.000	0.00%	0.53	0.54	91.94	1695.63	5%	-8%	0.64	0.38
Kuwait Projects Company Holding	0.149	0.000	0.00%	0.16	0.19	50.00	270.04	1%	-31%	0.23	0.15
Kuwait International Bank	0.172	0.000	0.00%	0.17	0.22	72.22	175.37	4%	-34%	0.27	0.16

Middel Performrs (Today's Price Change)

Integrated Holding	0.370	0.000	0.00%	0.40	0.46	18.75	81.40	-2%	-33%	0.60	0.36
Mobile Telecommunications	0.589	-0.001	-0.17%	0.56	0.55	97.18	2548.64	7%	-2%	0.60	0.41
Ahli United Bank BSC	0.221	-0.001	-0.45%	0.19	0.23	85.11	2133.07	18%	-25%	0.31	0.16
Gulf Bank	0.213	-0.001	-0.47%	0.21	0.25	71.70	618.61	12%	-30%	0.32	0.18
Boubyan Petrochemical	0.546	-0.003	-0.55%	0.59	0.60	33.33	275.47	1%	-18%	0.82	0.40
National Industries Group Holding	0.159	-0.001	-0.63%	0.16	0.19	62.50	227.03	2%	-34%	0.25	0.12
National Bank of Kuwait	0.829	-0.008	-0.96%	0.80	0.86	78.47	5629.88	5%	-18%	1.06	0.65
Human Soft Holding	2.574	-0.026	-1.00%	2.69	2.86	38.86	313.14	-6%	-15%	3.47	1.94
Qurain Petrochemical Industries	0.288	-0.003	-1.03%	0.28	0.27	72.34	294.15	7%	-7%	0.35	0.16

Bottom 5 Performrs (Today's Price Change)

Kuwait Finance House	0.613	-0.008	-1.29%	0.60	0.64	73.68	4652.01	7%	-16%	0.76	0.47
Agility Public Warehousing	0.618	-0.009	-1.44%	0.63	0.62	42.84	1182.57	-3%	-13%	0.75	0.36
Warba Bank	0.200	-0.003	-1.48%	0.20	0.22	61.90	315.00	3%	-24%	0.28	0.16
Mabane Co.	0.658	-0.011	-1.64%	0.64	0.69	82.64	727.15	9%	-23%	0.88	0.43
Shamal Az-Zour Al-Oula Power & Water	0.333	-0.048	-12.60%	0.02	0.01	2.04	366.30	0%	0%	0.50	0.32



DAILY MARKET COVERAGE REPORT

NIC MENA SECURITIES - RESEARCH AND STUDIES DEP



Banking Sector	Price			Valuation Multiples			MKT Cap	Price Performance		Trading Indicators		ROE	ROA	52 Week (KD)	
Company	Close (KD)	Day Δ	Day % Δ	PBV(X)	PE(X)	DY%	Mn KD	MTD(%)	YTD (%)	Value (Mn KD)	(Mn Shrs)	(%)	(%)	High	Low
National Bank of Kuwait	0.829	-0.008	-0.96%	1.64	14.03	3.8%	5,630	5%	-18%	4.15	4.98	11.7%	1.4%	1.062	0.654
Kuwait Finance House	0.613	-0.008	-1.29%	2.26	18.53	2.7%	4,652	7%	-16%	4.16	6.74	12.2%	1.3%	0.761	0.473
Ahli United Bank BSC	0.221	-0.001	-0.45%	1.67	9.73	5.5%	2,133	18%	-25%	7.09	32.07	17.1%	1.8%	0.311	0.160
Boubyan Bank	0.560	0.000	0.00%	2.95	27.07	1.1%	1,696	5%	-8%	0.40	0.72	10.9%	1.2%	0.638	0.380
Commercial Bank of Kuwait	0.514	0.000	0.00%	1.36	0.00	3.6%	992	3%	-3%	0.00	0.00	0.0%	0.0%	0.555	0.465
Gulf Bank	0.213	-0.001	-0.47%	0.93	9.72	4.7%	619	12%	-30%	0.99	4.67	9.6%	1.0%	0.317	0.180
Burgan Bank	0.196	0.001	0.51%	0.68	6.06	5.8%	513	9%	-36%	0.68	3.49	11.3%	1.2%	0.355	0.175
Ahli United Bank	0.264	0.000	0.00%	1.13	9.36	5.2%	515	7%	-19%	0.05	0.18	12.1%	1.3%	0.331	0.225
Warba Bank	0.200	-0.003	-1.48%	1.44	19.05	0.0%	315	3%	-24%	0.46	2.30	7.6%	0.5%	0.279	0.164
Al Ahli Bank of Kuwait	0.171	0.001	0.59%	0.49	9.58	8.2%	275	2%	-34%	0.02	0.15	5.1%	0.6%	0.320	0.156
Kuwait International Bank	0.172	0.000	0.00%	0.62	10.23	5.8%	175	4%	-34%	1.01	5.83	6.1%	0.6%	0.270	0.162
Ithmaar Holding	0.022	0.000	0.00%	0.08	323.35	0.0%	65	0%	0%	0.00	0.00	0.0%	0.0%	0.022	0.022
Total Banking Sector - 12 Companies				1.48	14.65	3.6%	17,580			19.03	61.11	10.13%	1.18%		

Basic materials	Price			Valuation Multiples			MKT Cap	Price Performance		Trading Indicators		ROE	ROA	52 Week (KD)	
Company	Close (KD)	Day Δ	Day % Δ	PBV(X)	PE(X)	DY%	Mn KD	MTD(%)	YTD (%)	Value (Mn KD)	(Mn Shrs)	(%)	(%)	High	Low
Boubyan Petrochemical	0.546	-0.003	-0.55%	1.23	23.30	9.5%	275	1%	-18%	0.20	0.36	5.3%	2.1%	0.818	0.395
Qurain Petrochemical Industries	0.288	-0.003	-1.03%	0.70	10.42	5.3%	294	7%	-7%	0.05	0.17	6.7%	3.6%	0.347	0.163
Al Kout Industrial Projects	0.769	0.000	0.00%	2.50	16.21	6.5%	78	0%	-10%	0.00	0.00	15.4%	11.3%	0.850	0.769
Kuwait Foundry	0.232	-0.002	-0.85%	0.78	18.75	23.0%	17	3%	-31%	0.00	0.01	4.1%	3.8%	0.564	0.192
Total Basic materials - 4 Companies				0.95	14.52	7.6%	664			0.25	0.54	6.57%	5.07%		

Consumer goods	Price			Valuation Multiples			MKT Cap	Price Performance		Trading Indicators		ROE	ROA	52 Week (KD)	
Company	Close (KD)	Day Δ	Day % Δ	PBV(X)	PE(X)	DY%	Mn KD	MTD(%)	YTD (%)	Value (Mn KD)	(Mn Shrs)	(%)	(%)	High	Low
Mezzan Holding	0.645	0.013	2.06%	1.86	34.86	2.6%	196	11%	29%	0.63	0.97	5.3%	2.2%	0.661	0.428
Livestock Transport and Trading	0.188	0.000	0.00%	0.98	33.51	0.1%	39	2%	7%	0.06	0.34	2.9%	2.0%	0.200	0.152
Danah Al Safat Foodstuff	0.012	0.000	0.00%	0.25	(0.30)	0.1%	1	0%	-25%	0.00	0.00	-84.8%	-43.2%	0.029	0.010
Total Basic materials - 3 Companies				1.57	96.04	2.2%	237			0.69	1.31	1.64%	0.90%		

DAILY MARKET COVERAGE REPORT

NIC MENA SECURITIES - RESEARCH AND STUDIES DEP



Consumer services		Price			Valuation Multiples			MKT Cap	Price Performance		Trading Indicators		ROE	ROA	52 Week (KD)	
Company	Close (KD)	Day Δ	Day % Δ	PBV(X)	PE(X)	DY%	Mn KD	MTD(%)	YTD (%)	Value (Mn KD)	(Mn Shrs)	(%)	(%)	High	Low	
Jazeera Airways	0.580	-0.010	-1.69%	2.88	7.76	6.0%	116	-6%	-47%	0.14	0.24	37.1%	9.0%	1.110	0.372	
Kuwait National Cinema	0.649	-0.031	-4.56%	0.75	7.02	7.4%	60	-13%	-38%	0.14	0.21	10.6%	7.2%	1.050	0.649	
Al Soor Fuel Marketing	0.109	0.000	0.00%	0.67	12.64	4.6%	44	-1%	-13%	0.00	0.00	5.3%	3.7%	0.129	0.096	
Oula Fuel Marketing	0.111	0.001	0.91%	0.67	11.62	5.3%	45	1%	-13%	0.00	0.00	5.7%	3.2%	0.134	0.095	
Sultan Center Food Products	0.057	0.002	3.45%	0.71	14.32	0.0%	32	5%	9%	0.01	0.22	4.9%	0.7%	0.060	0.036	
IFA Hotels and Resorts	0.023	0.001	2.68%	0.82	(0.62)	0.0%	14	1%	-58%	0.00	0.01	-131.5%	-8.1%	0.062	0.021	
Jiyad Holding	0.032	-0.002	-6.12%	0.29	6.42	0.0%	11	1%	-18%	0.01	0.16	4.5%	2.8%	0.047	0.029	
Kuwait Resorts	0.049	0.000	-0.20%	0.33	8.88	0.0%	9	4%	-21%	0.05	0.99	3.8%	3.2%	0.064	0.040	
Future Kid Entertainment and Real Estate	0.088	0.001	1.27%	0.51	33.24	13.1%	10	0%	0%	0.00	0.00	1.5%	0.9%	0.110	0.069	
Al Eid Food	0.072	0.000	0.00%	0.40	4.79	0.0%	7	-19%	-9%	0.00	0.01	8.4%	6.1%	0.096	0.046	
Alrai Media Group	0.037	0.000	0.00%	0.83	(2.43)	0.0%	9	0%	-2%	0.00	0.00	-34.2%	-20.0%	0.049	0.030	
Kuwait Hotels	0.081	-0.004	-4.92%	1.14	(4.68)	0.0%	5	-3%	-19%	0.00	0.00	-24.4%	-13.2%	0.101	0.069	
Palms Agro Production	0.060	0.000	0.00%	0.51	(42.30)	16.6%	3	0%	49%	0.00	0.00	-1.2%	-0.9%	0.060	0.025	
Kuwait Cable Vision	0.014	0.000	0.00%	0.52	(11.65)	0.0%	1	0%	0%	0.00	0.00	-4.5%	-3.0%	0.027	0.012	
Total Consumer services - 14 Companies				0.83	34.68	4.8%	365			0.35	1.85	2.38%	2.72%			

Financial services		Price			Valuation Multiples			MKT Cap	Price Performance		Trading Indicators		ROE	ROA	52 Week (KD)	
Company	Close (KD)	Day Δ	Day % Δ	PBV(X)	PE(X)	DY%	Mn KD	MTD(%)	YTD (%)	Value (Mn KD)	(Mn Shrs)	(%)	(%)	High	Low	
Egypt Kuwait Holding	0.374	0.000	0.00%	2.22	12.63	5.2%	383	0%	-17%	0.00	0.00	17.6%	7.1%	0.500	0.318	
Kuwait Projects Company Holding	0.149	0.000	0.00%	0.80	9.00	6.2%	270	1%	-31%	0.14	0.93	8.9%	0.3%	0.231	0.147	
National Industries Group Holding	0.159	-0.001	-0.63%	0.60	4.90	6.8%	227	2%	-34%	0.21	1.32	12.3%	3.7%	0.252	0.121	
GFH Financial Group	0.049	-0.001	-1.02%	0.57	7.19	5.4%	179	3%	-30%	0.01	0.19	8.0%	1.3%	0.075	0.042	
Alimtiyaz Investment Group	0.089	0.001	0.57%	0.42	4.61	9.0%	91	1%	-30%	0.07	0.84	9.1%	5.2%	0.137	0.071	
Commercial Facilities	0.185	0.000	0.00%	0.57	7.13	9.1%	94	-3%	-15%	0.00	0.00	8.0%	4.2%	0.235	0.179	
National Investments	0.110	-0.002	-1.79%	0.49	8.18	7.4%	88	8%	-20%	1.03	9.21	5.9%	5.0%	0.155	0.080	
Tamdeen Investment	0.239	0.000	0.00%	0.29	9.91	5.0%	82	-4%	-31%	0.00	0.00	3.0%	2.2%	0.400	0.199	
Kuwait Investment	0.109	-0.001	-0.91%	0.48	3.41	9.2%	60	2%	-27%	0.08	0.76	13.9%	6.0%	0.172	0.095	
Noor Financial Investment	0.150	0.002	1.35%	0.93	7.47	3.2%	60	9%	26%	0.33	2.26	12.5%	7.5%	0.184	0.076	

DAILY MARKET COVERAGE REPORT

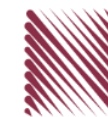
NIC MENA SECURITIES - RESEARCH AND STUDIES DEP



Financial services	Price			Valuation Multiples			MKT Cap	Price Performance		Trading Indicators		ROE	ROA	52 Week (KD)	
Company	Close (KD)	Day Δ	Day % Δ	PBV(X)	PE(X)	DY%	Mn KD	MTD(%)	YTD (%)	Value (Mn KD)	(Mn Shrs)	(%)	(%)	High	Low
Al Bareeq Holding	0.105	0.000	0.00%	1.10	20.97	0.0%	46	0%	5%	0.00	0.00	5.2%	5.0%	0.110	0.100
Kuwait Financial Centre	0.073	-0.001	-1.75%	0.37	5.02	6.8%	35	0%	-31%	0.00	0.03	7.3%	3.5%	0.121	0.070
Aayan Leasing and Investment	0.046	0.002	4.11%	0.53	(2.50)	4.0%	37	8%	-2%	0.25	5.63	-21.4%	-4.9%	0.066	0.032
Arabi Group Holdings	0.198	0.000	0.00%	1.07	(19.90)	0.0%	33	0%	-28%	0.00	0.00	-5.4%	-0.6%	0.337	0.075
Arzan Financial Group for Financing and Investme	0.046	0.003	6.93%	0.37	33.66	0.0%	37	19%	95%	1.18	26.03	1.1%	0.7%	0.047	0.022
Privatization Holding	0.043	0.000	0.00%	0.31	(38.32)	0.0%	26	0%	-14%	0.00	0.00	-0.8%	-0.5%	0.059	0.037
Asiya Capital Investments	0.032	0.001	3.24%	0.34	16.44	0.2%	25	5%	-22%	0.00	0.04	2.1%	2.0%	0.041	0.029
KAMCO Investment	0.069	0.000	0.00%	0.42	7.82	0.0%	24	-3%	-23%	0.01	0.14	5.4%	2.3%	0.111	0.060
Kuwait and Middle East Financial Investment	0.120	0.001	0.84%	1.95	47.92	0.0%	31	28%	34%	0.24	2.04	4.1%	3.2%	0.123	0.052
Umm Al Qaiwain General Investment Co	0.067	0.000	0.00%	0.45	12.54	5.5%	24	0%	0%	0.00	0.00	3.6%	3.3%	0.087	0.052
Securities House	0.038	0.000	0.00%	0.52	(55.41)	0.0%	21	-2%	-17%	0.11	3.01	-0.9%	-0.7%	0.050	0.027
Gulf Investment House	0.067	0.001	1.36%	0.75	123.74	0.0%	27	21%	4%	0.20	3.14	0.6%	0.5%	0.078	0.038
Coast Investment and Development	0.032	0.000	0.00%	0.34	31.69	0.0%	19	4%	-20%	0.01	0.20	1.1%	1.0%	0.045	0.026
Bayan Investment	0.048	-0.001	-1.03%	0.48	(24.80)	0.0%	17	-2%	26%	0.00	0.10	-1.9%	-0.8%	0.053	0.031
First Investment	0.027	0.000	0.00%	0.42	(0.37)	0.0%	18	-3%	-21%	0.02	0.66	-113.6%	-62.0%	0.045	0.022
Al Madar Finance and Investment	0.076	0.002	2.56%	0.69	11.35	0.0%	16	-4%	-18%	0.04	0.51	6.1%	5.0%	0.148	0.062
Inovest BSC Public	0.058	0.000	0.00%	0.40	7.71	10.3%	17	-2%	-10%	0.00	0.00	5.2%	2.9%	0.070	0.044
Al Manar Financing and Leasing	0.051	0.000	0.00%	0.46	13.02	1.0%	16	4%	-3%	0.00	0.00	3.5%	2.7%	0.060	0.037
Osoul Investment	0.080	-0.004	-4.42%	0.57	6.38	0.0%	12	-2%	7%	0.01	0.09	9.0%	8.2%	0.121	0.059
National International Holding	0.066	-0.002	-2.94%	0.33	7.56	4.7%	13	-4%	-14%	0.00	0.02	4.4%	3.3%	0.085	0.051
Kuwait Finance and Investment	0.043	0.000	0.00%	0.34	19.08	0.0%	13	-3%	-14%	0.00	0.00	1.8%	1.2%	0.058	0.038
Manazel Holding	0.030	0.000	-0.34%	0.65	18.96	0.0%	13	2%	-25%	0.03	1.13	3.4%	0.8%	0.048	0.021
Amar Finance and Leasing	0.047	0.002	5.12%	0.53	39.52	0.0%	9	-5%	24%	0.00	0.00	1.3%	1.2%	0.066	0.037
UniCap Investment and Finance	0.035	-0.003	-6.67%	0.35	(17.52)	0.0%	8	-3%	-36%	0.01	0.20	-2.0%	-1.0%	0.057	0.035
Gulf North Africa Holding	0.055	0.000	0.00%	0.73	70.86	0.0%	8	2%	-11%	0.00	0.00	1.0%	0.6%	0.062	0.052
International Financial Advisors	0.030	-0.001	-2.60%	0.91	(0.41)	2.1%	7	3%	-44%	0.00	0.16	-222.8%	-19.3%	0.060	0.027
Kuwait Syrian Holding Co	0.029	0.000	-0.68%	0.25	(14.97)	0.0%	5	-26%	-7%	0.00	0.01	-1.7%	-1.1%	0.044	0.022
Amwal International Investment	0.036	0.000	0.00%	0.67	13.34	0.0%	7	-5%	20%	0.00	0.07	5.0%	2.6%	0.055	0.030
Al Salam Group Holding	0.022	0.000	0.00%	0.19	168.35	0.0%	6	10%	-24%	0.05	2.34	0.1%	0.1%	0.039	0.018
Warba Capital Holding	0.054	0.000	0.00%	0.60	(8.58)	0.0%	5	0%	-16%	0.00	0.00	-7.0%	-6.2%	0.115	0.045
Credit Rating and Collection	0.035	0.000	0.00%	1.08	(23.69)	0.0%	6	0%	76%	0.00	0.00	-4.6%	-4.3%	0.037	0.018
National Consumer Holding	0.055	0.000	0.00%	0.61	269.60	0.0%	5	0%	0%	0.00	0.00	0.2%	0.2%	0.100	0.010
Al Madina for Finance and Investment	0.011	0.000	0.00%	0.37	(2.05)	0.0%	4	5%	-28%	0.00	0.25	-17.9%	-7.7%	0.019	0.009
Ekttitab Holding	0.013	0.000	0.79%	0.31	(9.01)	0.0%	4	-6%	-15%	0.01	0.83	-3.4%	-3.0%	0.019	0.010
Al Deera Holding	0.016	0.000	-1.84%	0.70	(9.02)	0.0%	3	-6%	-20%	0.00	0.01	-7.7%	-1.7%	0.022	0.011
Al Mal Investment Company	0.009	0.000	0.00%	0.40	(0.85)	0.0%	3	1%	-8%	0.00	0.19	-47.6%	-23.3%	0.016	0.008
Gulf Franchising Holding	0.065	0.000	0.00%	1.01	(2.80)	0.0%	3	0%	-14%	0.00	0.00	-36.2%	-10.8%	0.160	0.001
Tamkeen Holding	0.005	0.000	0.00%	0.05	(7.18)	0.0%	0	0%	0%	0.00	0.00	-0.7%	-0.7%	0.007	0.005
Total Financial services - 48 Companies				0.62	14.74	4.9%	2,136			4.07	62.35	4.18%	4.11%		

DAILY MARKET COVERAGE REPORT

NIC MENA SECURITIES - RESEARCH AND STUDIES DEP



Health care	Price			Valuation Multiples			MKT Cap	Price Performance		Trading Indicators		ROE	ROA	52 Week (KD)	
Company	Close (KD)	Day Δ	Day % Δ	PBV(X)	PE(X)	DY%	Mn KD	MTD(%)	YTD (%)	Value (Mn KD)	(Mn Shrs)	(%)	(%)	High	Low
Al-Maidan Clinic for Oral Health Services	1.220	0.000	0.00%	7.90	47.78	0.6%	305	0%	0%	0.00	0.00	16.5%	10.9%	1.240	1.220
Advanced Technology	0.660	0.000	0.00%	1.72	53.73	2.3%	99	0%	-19%	0.00	0.00	3.2%	0.7%	1.000	0.580
Yiaco Medical	0.707	0.000	0.00%	6.06	52.72	0.0%	12	0%	0%	0.00	0.00	11.5%	0.6%	0.707	0.707
Total Health care - 3 Companies				4.24	49.21	1.0%	416			0.00	0.00	8.61%	4.68%		

Industrials	Price			Valuation Multiples			MKT Cap	Price Performance		Trading Indicators		ROE	ROA	52 Week (KD)	
Company	Close (KD)	Day Δ	Day % Δ	PBV(X)	PE(X)	DY%	Mn KD	MTD(%)	YTD (%)	Value (Mn KD)	(Mn Shrs)	(%)	(%)	High	Low
Agility Public Warehousing	0.618	-0.009	-1.44%	1.07	13.63	2.9%	1,183	-3%	-13%	3.03	4.90	7.9%	4.2%	0.748	0.357
Human Soft Holding	2.574	-0.026	-1.00%	3.89	8.73	7.1%	313	-6%	-15%	0.51	0.20	44.6%	30.3%	3.470	1.944
ALAFCO Aviation Lease and Finance	0.157	0.001	0.64%	0.47	8.45	6.4%	149	3%	-42%	1.64	10.41	5.5%	1.4%	0.279	0.138
Kuwait Cement	0.157	-0.005	-3.09%	0.54	27.87	9.5%	112	-4%	-36%	0.13	0.84	1.9%	1.3%	0.284	0.144
Gulf Cable and Electrical Industries	0.595	-0.003	-0.50%	0.72	29.51	4.6%	125	5%	22%	0.18	0.30	2.4%	2.2%	0.611	0.390
Integrated Holding	0.370	0.000	0.00%	1.19	10.31	10.8%	81	-2%	-33%	0.07	0.19	11.5%	8.5%	0.600	0.360
Kuwait Portland Cement	0.725	0.000	0.00%	0.97	9.58	13.6%	73	3%	-26%	0.01	0.01	10.2%	8.2%	1.215	0.683
United Projects for Aviation Services	0.465	0.000	0.00%	0.98	7.96	4.5%	74	0%	-9%	0.00	0.00	12.3%	7.8%	0.512	0.367
Heavy Engineering Industries and Shipbuilding	0.356	-0.003	-0.84%	1.03	5.72	8.2%	64	3%	-12%	0.14	0.40	18.0%	5.9%	0.419	0.298
Educational Holding Group	0.289	0.002	0.70%	1.67	9.15	5.2%	71	0%	-34%	0.00	0.01	18.3%	16.7%	0.475	0.228
National Industries	0.155	0.003	1.97%	0.64	12.63	6.4%	54	-4%	-6%	0.00	0.02	5.1%	3.8%	0.180	0.143
ACICO Industries	0.098	0.000	0.41%	0.31	12.74	5.0%	32	-8%	-30%	0.00	0.02	2.5%	0.6%	0.145	0.081
Kuwait Company for Process Plant Construction a	0.303	0.000	0.00%	1.20	6.49	5.9%	32	7%	26%	0.09	0.28	18.5%	7.7%	0.337	0.173
Ras Al Khaimah for White Cement and Constructi	0.065	0.000	0.00%	0.51	19.94	8.4%	33	0%	0%	0.00	0.00	2.6%	2.0%	0.080	0.053
Gulf Cement	0.038	0.003	9.91%	0.38	(13.75)	11.0%	31	-1%	-31%	0.00	0.03	-2.7%	-2.2%	0.063	0.032
Combined Group Contracting	0.151	0.000	0.00%	0.52	6.80	13.6%	25	-3%	-39%	0.08	0.52	7.7%	1.2%	0.251	0.143
Sharjah Cement and Industrial Development	0.042	0.000	0.00%	0.21	25.32	12.4%	26	0%	0%	0.00	0.00	0.8%	0.6%	0.067	0.042
KGL Logistics	0.025	0.000	1.20%	0.19	4.11	0.1%	19	8%	-32%	0.03	1.19	4.6%	2.9%	0.043	0.023
Fujairah Cement Industries	0.031	0.000	0.00%	0.13	15.23	13.4%	11	5%	-30%	0.00	0.00	0.8%	0.4%	0.053	0.029
Shuaiba Industrial	0.124	0.000	0.00%	0.70	38.54	8.0%	12	0%	-20%	0.00	0.00	1.8%	1.4%	0.180	0.122
Kuwait and Gulf Link Transport	0.046	0.000	0.00%	0.19	13.85	0.0%	13	-2%	-31%	0.01	0.25	1.4%	0.4%	0.080	0.042
National Cleaning	0.051	0.000	0.78%	0.33	7.49	9.1%	12	-1%	-26%	0.00	0.00	4.4%	1.5%	0.088	0.047
Mubarrad Holding	0.055	0.000	-0.18%	0.44	8.94	8.5%	9	-1%	-37%	0.01	0.09	4.9%	4.1%	0.089	0.049
Specialities Group Holding	0.066	0.000	0.15%	0.32	7.14	0.0%	9	0%	-21%	0.01	0.15	4.5%	3.5%	0.086	0.055
Hilal Cement	0.065	-0.003	-4.97%	0.57	(5.34)	23.1%	7	-5%	-35%	0.00	0.00	-10.6%	-6.2%	0.100	0.063
National Ranges	0.017	0.001	5.06%	0.30	(1.21)	0.0%	5	10%	66%	0.01	0.37	-24.9%	-5.3%	0.018	0.007
Metal and Recycling	0.046	0.000	0.00%	0.38	(1.95)	0.0%	4	1%	-8%	0.00	0.00	-19.7%	-10.1%	0.070	0.020
Salbookh Trading	0.030	0.000	0.00%	0.40	(1.74)	0.0%	3	-1%	-41%	0.00	0.00	-23.2%	-15.9%	0.051	0.026
Equipment Holding	0.016	0.001	4.03%	0.31	(178.99)	0.0%	2	15%	-29%	0.02	1.08	-0.2%	-0.1%	0.024	0.013
Total Industrials - 29 Companies				0.82	12.32	5.4%	2,584			5.98	21.28	6.67%	5.05%		

DAILY MARKET COVERAGE REPORT

NIC MENA SECURITIES - RESEARCH AND STUDIES DEP



Insurance	Price			Valuation Multiples			MKT Cap	Price Performance		Trading Indicators		ROE	ROA	52 Week (KD)	
Company	Close (KD)	Day Δ	Day % Δ	PBV(X)	PE(X)	DY%	Mn KD	MTD(%)	YTD (%)	Value (Mn KD)	(Mn Shrs)	(%)	(%)	High	Low
Gulf Insurance Group	0.568	-0.029	-4.86%	0.93	7.62	6.8%	102	2%	-14%	0.00	0.00	12.3%	1.7%	0.687	0.556
Al Ahleia Insurance	0.404	0.000	0.00%	0.73	7.75	8.7%	79	-3%	-6%	0.00	0.00	9.4%	3.3%	0.445	0.385
Kuwait Insurance	0.339	0.000	0.00%	0.56	6.57	7.0%	63	0%	3%	0.00	0.00	8.5%	4.6%	0.387	0.298
Kuwait Reinsurance	0.195	0.000	0.00%	0.74	8.35	2.2%	39	4%	41%	0.00	0.00	8.9%	3.2%	0.195	0.126
Bahrain Kuwait Insurance	0.200	0.000	0.00%	0.93	12.87	6.1%	28	0%	0%	0.00	0.00	7.2%	1.1%	0.200	0.200
Warba Insurance	0.085	0.001	1.07%	0.36	11.76	0.0%	14	7%	37%	0.00	0.03	3.1%	1.0%	0.096	0.053
First Takaful Insurance	0.041	0.001	3.02%	0.50	5.20	0.0%	4	3%	8%	0.00	0.00	9.6%	5.9%	0.056	0.031
Wethaq Takaful Insurance	0.026	0.002	6.07%	0.24	(33.16)	0.0%	3	4%	5%	0.00	0.12	-0.7%	-0.7%	0.035	0.018
Total Insurance - 8 Companies				0.70	7.92	6.3%	333			0.01	0.15	8.86%	3.00%		

Oil and Gas	Price			Valuation Multiples			MKT Cap	Price Performance		Trading Indicators		ROE	ROA	52 Week (KD)	
Company	Close (KD)	Day Δ	Day % Δ	PBV(X)	PE(X)	DY%	Mn KD	MTD(%)	YTD (%)	Value (Mn KD)	(Mn Shrs)	(%)	(%)	High	Low
Burgan for Well Drilling Trading and Maintenance	0.070	0.000	0.00%	0.25	7.11	0.0%	16	0%	-13%	0.00	0.00	3.6%	1.1%	0.098	0.062
Energy House Holding	0.022	0.000	0.00%	0.66	(2.95)	0.0%	16	-2%	-6%	0.00	0.00	-22.5%	-17.0%	0.036	0.014
Gulf Petroleum Investment	0.018	0.000	0.55%	0.20	(5.93)	0.0%	8	26%	-8%	0.47	25.21	-3.4%	-2.3%	0.025	0.012
Independent Petroleum Group	0.400	-0.020	-4.76%	0.74	10.90	7.5%	72	5%	-17%	0.00	0.00	6.8%	2.2%	0.497	0.375
National Petroleum Services	1.045	0.000	0.00%	2.49	8.91	6.7%	101	-7%	-11%	0.00	0.00	27.9%	23.6%	1.389	0.903
Senegy Holding	0.016	0.000	-1.82%	0.32	(0.68)	0.0%	3	-7%	-28%	0.00	0.21	-47.9%	-30.4%	0.027	0.014
Total Oil and Gas - 6 Companies				0.78	25.25	5.6%	218			0.48	25.42	3.10%	2.18%		

Real estate	Price			Valuation Multiples			MKT Cap	Price Performance		Trading Indicators		ROE	ROA	52 Week (KD)	
Company	Close (KD)	Day Δ	Day % Δ	PBV(X)	PE(X)	DY%	Mn KD	MTD(%)	YTD (%)	Value (Mn KD)	(Mn Shrs)	(%)	(%)	High	Low
Mabane Co.	0.658	-0.011	-1.64%	1.54	12.89	1.6%	727	9%	-23%	0.52	0.79	11.9%	5.8%	0.877	0.434
Salhia Real Estate	0.404	-0.003	-0.74%	1.22	9.29	4.9%	200	2%	-3%	0.02	0.05	13.2%	5.8%	0.460	0.324
Commercial Real Estate	0.091	0.000	-0.44%	0.56	11.22	6.3%	164	-3%	-1%	0.08	0.88	5.0%	2.7%	0.103	0.083
Tamdeen Real Estate	0.254	0.000	0.00%	0.38	12.89	3.8%	106	-2%	-21%	0.00	0.00	3.0%	2.2%	0.343	0.248
National Real Estate	0.071	0.000	0.00%	0.37	8.90	0.0%	102	-2%	-22%	0.00	0.00	4.2%	2.4%	0.095	0.060
Kuwait Real Estate	0.087	0.000	-0.11%	0.59	10.66	0.4%	75	7%	-17%	0.16	1.81	5.5%	2.2%	0.115	0.070
United Real Estate	0.048	0.000	0.00%	0.28	(7.14)	0.0%	52	-3%	-22%	0.00	0.00	-3.9%	-1.2%	0.064	0.045

DAILY MARKET COVERAGE REPORT

NIC MENA SECURITIES - RESEARCH AND STUDIES DEP



Real estate	Price			Valuation Multiples			MKT Cap	Price Performance		Trading Indicators		ROE	ROA	52 Week (KD)		
	Company	Close (KD)	Day Δ	Day % Δ	PBV(X)	PE(X)	DY%	Mn KD	MTD(%)	YTD (%)	Value (Mn KD)	(Mn Shrs)	(%)	(%)	High	Low
First Dubai for Real Estate Development	0.035	-0.001	-1.94%	0.48	38.82	1.1%	35	0%	-1%	0.01	0.25	1.2%	1.0%	0.055	0.026	
Al Mazaya Holding	0.051	0.001	2.64%	0.40	(3.61)	0.1%	32	3%	-15%	0.00	0.00	-11.0%	-3.8%	0.067	0.047	
Dar Al Thuraya Real Estate	0.128	0.000	0.00%	1.22	33.74	0.0%	19	-9%	83%	0.00	0.00	3.6%	3.6%	0.190	0.040	
Injazat Real Estate Development	0.079	0.000	0.00%	0.51	(3.79)	8.7%	26	-1%	-1%	0.00	0.00	-13.4%	-7.0%	0.091	0.061	
Ajial Real Estate Entertainment	0.134	0.000	0.00%	0.20	12.33	0.0%	25	-1%	-26%	0.00	0.00	1.6%	1.4%	0.224	0.121	
Arkan Al Kuwait Real Estate	0.083	0.004	4.53%	0.59	8.99	9.4%	21	-1%	-7%	0.00	0.00	6.6%	3.5%	0.100	0.076	
Al Argan International Real Estate	0.092	0.000	0.00%	0.27	29.84	5.3%	23	15%	-12%	0.00	0.00	0.9%	0.3%	0.143	0.060	
Al-Enmaa Real Estate	0.039	-0.001	-1.27%	0.39	10.31	0.0%	18	4%	-38%	0.00	0.02	3.8%	2.4%	0.079	0.037	
Aayan Real Estate	0.051	0.000	0.00%	0.28	9.41	9.9%	20	-3%	-31%	0.00	0.00	3.0%	1.9%	0.080	0.048	
Dalqan Real Estate	0.350	0.000	0.00%	2.91	59.01	0.0%	19	0%	0%	0.00	0.00	4.9%	4.9%	0.350	0.350	
Kuwait Business Town Real Estate	0.029	0.000	0.00%	0.26	7.38	0.3%	18	3%	-34%	0.05	1.79	3.6%	2.7%	0.046	0.027	
Tijara and Realestate Investment	0.039	0.000	0.00%	0.37	10.26	5.0%	14	-5%	-22%	0.00	0.00	3.6%	1.9%	0.055	0.034	
Munshaat Real Estate Projects	0.050	0.000	0.00%	0.34	18.43	4.2%	16	-4%	-32%	0.00	0.00	1.8%	0.7%	0.086	0.046	
Aqar Real Estate Investments	0.075	0.000	0.00%	0.54	6.26	6.6%	16	-3%	-6%	0.00	0.00	8.7%	7.3%	0.089	0.062	
Sokouk Holding	0.023	0.000	0.00%	0.28	(3.81)	0.0%	13	-5%	-35%	0.00	0.13	-7.4%	-4.7%	0.040	0.022	
Al-Arabiya Real Estate	0.023	0.000	-0.88%	0.20	6.82	2.8%	11	0%	-24%	0.00	0.03	2.9%	1.1%	0.033	0.020	
Mashaer Holding	0.058	0.000	0.00%	0.44	6.24	0.0%	10	-3%	-25%	0.00	0.00	7.1%	5.0%	0.086	0.048	
Osos Holding Group	0.098	0.003	2.74%	0.78	7.36	9.7%	10	0%	-2%	0.00	0.01	10.5%	7.0%	0.118	0.084	
Abyaar Real Estate Development	0.007	0.000	0.00%	0.21	(0.51)	0.0%	8	7%	-6%	0.01	2.01	-40.9%	-12.4%	0.015	0.005	
Ream Real Estate	0.170	0.021	14.09%	1.30	(6.84)	1.3%	19	164%	93%	0.00	0.00	-19.0%	-10.1%	0.170	0.060	
Investors Holding Group	0.013	0.000	0.79%	0.64	(0.60)	0.0%	8	-3%	59%	0.00	0.34	-106.5%	-57.2%	0.017	0.007	
Al Massaleh Real Estate	0.028	-0.001	-4.14%	0.31	(3.83)	0.0%	6	-1%	-25%	0.00	0.01	-8.1%	-1.9%	0.040	0.026	
Kuwait Real Estate Holding	0.026	0.000	0.00%	0.04	0.68	6.9%	5	-5%	-11%	0.00	0.00	5.5%	2.2%	0.034	0.023	
Kuwait Remal Real Estate	0.014	-0.001	-6.85%	0.21	(1.87)	0.0%	4	-4%	-45%	0.02	1.60	-11.0%	-3.9%	0.029	0.013	
Real Estate Trade Centers	0.025	0.001	4.60%	0.14	143.67	0.0%	3	-4%	8%	0.03	1.37	0.1%	0.1%	0.050	0.018	
Taameer Real Estate Investment	0.018	0.000	0.55%	0.28	(4.00)	0.0%	4	2%	-31%	0.00	0.00	-7.0%	-4.5%	0.034	0.013	
Al Masaken International Real Estate Developmen	0.038	0.000	0.00%	0.42	46.26	0.4%	4	0%	-13%	0.00	0.00	0.9%	0.4%	0.074	0.027	
Mena Real Estate	0.025	0.001	2.88%	0.17	(55.72)	0.0%	3	3%	-40%	0.00	0.01	-0.3%	-0.2%	0.043	0.021	
Sanam Real Estate	0.030	0.000	0.00%	0.38	40.63	0.0%	4	1%	-25%	0.00	0.00	0.9%	0.9%	0.043	0.027	
Ajwan Gulf Real Estate	0.011	0.000	-0.92%	0.19	(7.75)	0.0%	2	-2%	-28%	0.02	1.48	-2.5%	-2.2%	0.016	0.009	
Effect Real Estate	0.021	0.000	0.00%	0.29	(8.85)	4.9%	2	0%	0%	0.00	0.00	-3.3%	-3.2%	0.024	0.020	
Al Mudon International Real Estate	0.016	0.000	0.00%	0.12	(8.22)	0.0%	2	0%	-35%	0.00	0.00	-1.5%	-1.4%	0.029	0.015	
Total Real estate - 39 Companies				0.60	21.62	2.6%	1,847				0.94	12.58	2.79%	2.96%		

DAILY MARKET COVERAGE REPORT

NIC MENA SECURITIES - RESEARCH AND STUDIES DEP



Technology	Price			Valuation Multiples			MKT Cap	Price Performance		Trading Indicators		ROE	ROA	52 Week (KD)	
Company	Close (KD)	Day Δ	Day % Δ	PBV(X)	PE(X)	DY%	Mn KD	MTD(%)	YTD (%)	Value (Mn KD)	(Mn Shrs)	(%)	(%)	High	Low
Automated Systems	0.061	-0.001	-0.81%	0.48	(59.17)	6.6%	6	-5%	-14%	0.00	0.06	-0.8%	-0.7%	0.086	0.051
Total Technology - 1 Companies				0.48	(59.17)	6.6%	6			0.00	0.06	-0.81%	-0.73%		

Telecom	Price			Valuation Multiples			MKT Cap	Price Performance		Trading Indicators		ROE	ROA	52 Week (KD)	
Company	Close (KD)	Day Δ	Day % Δ	PBV(X)	PE(X)	DY%	Mn KD	MTD(%)	YTD (%)	Value (Mn KD)	(Mn Shrs)	(%)	(%)	High	Low
Mobile Telecommunications	0.589	-0.001	-0.17%	1.96	11.75	5.3%	2,549	7%	-2%	3.07	5.20	16.7%	4.6%	0.604	0.407
Kuwait Telecommunications	0.832	-0.007	-0.83%	1.93	9.53	4.2%	415	0%	6%	0.04	0.05	20.2%	11.1%	0.870	0.680
National Mobile Telecommunications	0.577	0.000	0.00%	0.51	9.60	11.2%	289	1%	-30%	0.06	0.10	5.3%	2.4%	0.835	0.550
AAN Digital Services	0.011	0.000	0.96%	0.31	34.54	0.0%	9	-1%	-23%	0.06	6.22	0.9%	0.7%	0.021	0.009
Hayat Communications	0.052	-0.001	-1.88%	0.45	22.16	0.0%	5	16%	-30%	0.00	0.00	2.0%	0.8%	0.098	0.025
Telecom - 5 Companies				1.54	11.22	5.7%	3,267			3.24	11.58	13.70%	7.86%		

Utilities	Price			Valuation Multiples			MKT Cap	Price Performance		Trading Indicators		ROE	ROA	52 Week (KD)	
Company	Close (KD)	Day Δ	Day % Δ	PBV(X)	PE(X)	DY%	Mn KD	MTD(%)	YTD (%)	Value (Mn KD)	(Mn Shrs)	(%)	(%)	High	Low
Shamal Az-Zour Al-Oula Power & Water	0.333	-0.048	-12.60%	4.78	29.78	0.0%	366	0%	0%	12.88	36.76	16.1%	2.3%	0.500	0.319
Total Utilities - 1 Companies				4.78	29.78	0.0%	366			12.88	36.76	16.06%	2.26%		

Total Market 173 Companies				1.16	14.56	4.1%	30,018			47.90	234.99	7.97%	1.42%		
-----------------------------------	--	--	--	-------------	--------------	-------------	---------------	--	--	--------------	---------------	--------------	--------------	--	--

End of Report

The information contained in this document is proprietary to NIC and is for use only by the persons to whom it is issued. This document is confidential and may not be distributed either in part or in whole without the express agreement of NIC. It is intended solely for the use of the individual or entity to whom it is addressed and others authorized to receive it.



شركة الاستثمار الوطنية
NATIONAL INVESTMENTS COMPANY

Sharq, Al Mutanabi Street, Khaleejia Tower | P.O. Box 25667, Safat 13117, Kuwait

T.: +965 2226 6666 | Fax: +965 2226 6793 | www.nic.com.kw