

شركة الاستثمارات الوطنية
NATIONAL INVESTMENTS COMPANY

Bursa Kuwait – Daily Market Report
MENA Securities – Research & Studies Dep.

Thursday, September 17, 2020

DAILY MARKET COVERAGE REPORT

NIC MENA SECURITIES - RESEARCH AND STUDIES DEP



Index	Close	DTD Chg Net	DTD (%)	YTD (%)	52W High	52W Low	MKT CAP Bn (KD)	PBV (X)	PE (X)	DY (%)
All Share Index	5,447.16	52.33	0.97%	-13.2%	6,416.43	4,339.58	31.57	1.26	15.24	3.86%
Premier Index	6,009.90	75.93	1.28%	-13.8%	7,172.32	4,498.65	23.47	1.69	14.11	3.56%
Main Index	4,332.43	3.61	0.08%	-11.8%	4,932.47	3,965.63	8.09	0.72	19.90	4.72%

Index	Value Mn(KD)	Volume (Mn share)
All Share Index	72.31	445.63
Premier Index	56.54	143.08
Main Index	15.77	302.55

Market Breadth	UP	Down	No Chg
All Share Index	66	50	57
Premier Index	17	2	1
Main Index	49	48	56

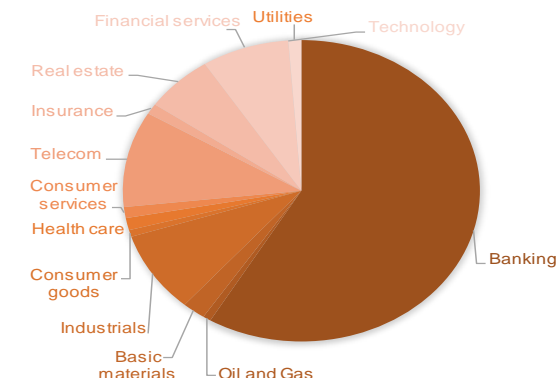
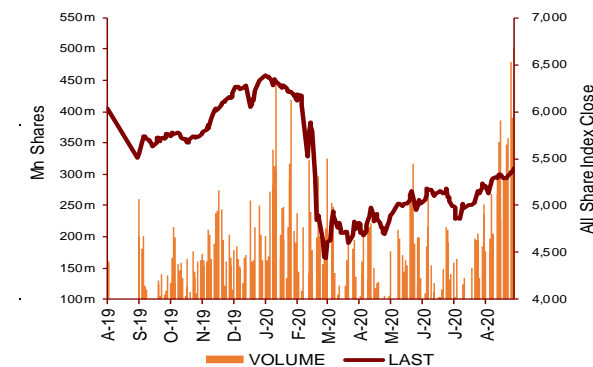
Today's Top 5 Gainer %	Close KD	Value KD	DTD (%)
Kuwait Business Town Real Estate	0.029	799,982	13.73%
Al Masaken International Real	0.033	2	10.00%
Palms Agro Production	0.065	278	9.24%
Al Eid Food	0.065	2,754	8.83%
Al Argan International Real Es	0.089	902	7.10%

Today's Top 5 Loser %	Close KD	Value KD	DTD (%)
Dar Al Thuraya Real Estate	0.074	14,906	-19.54%
National Ranges	0.014	16,893	-6.67%
Umm Al Qaiwain General I	0.070	33,691	-4.89%
Credit Rating and Collectio	0.029	1	-4.85%
Sanam Real Estate	0.030	590	-4.84%

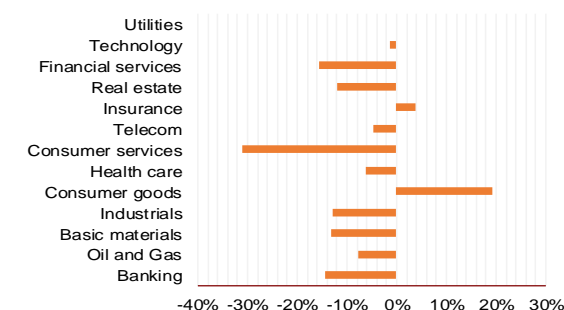
Today's Top 5 by Value	Close KD	DTD Chg	Trade Val Mn(KD)
Kuwait Finance House	0.642	1.26%	9.77
National Bank of Kuwait	0.871	0.58%	8.00
Ahli United Bank BSC	0.240	3.45%	7.89
Mobile Telecommunications	0.581	0.87%	5.49
Agility Public Warehousing	0.653	3.82%	4.61

Top 5 by Volume	Close KD	DTD Chg	Trade Vol Mn(Shrs)
Investors Holding Group	0.013	2.31%	93.92
Aayan Leasing and Investrn	0.084	0.00%	51.28
Ahli United Bank BSC	0.240	3.45%	33.28
Kuwait Business Town Re	0.029	13.73%	28.03
Gulf Bank	0.217	-0.91%	17.44

Sector	Close	DTD Chg Net	DTD (%)	YTD (%)	52W High	52W Low	MKT CAP Bn (KD)	PBV (X)	PE (X)	DY (%)
Banking	1,267.57	13.440	1.07%	-14.4%	1,536.8	986.4	18.47	1.68	15.39	3.4%
Oil and Gas	1,142.24	20.980	1.87%	-7.7%	1,372.2	985.7	0.23	0.83	26.74	5.3%
Basic materials	789.50	6.300	0.80%	-13.1%	992.5	561.7	0.66	0.95	14.51	7.6%
Industrials	807.00	15.100	1.91%	-13.0%	937.5	602.9	2.75	0.88	13.12	5.1%
Consumer goods	764.49	3.690	0.49%	19.2%	810.7	548.6	0.23	1.52	92.65	2.2%
Health care	829.21	0.000	0.00%	-6.3%	921.9	815.0	0.41	4.19	48.62	1.0%
Consumer services	738.42	0.970	0.13%	-31.1%	1,083.1	674.8	0.37	0.84	35.34	4.7%
Telecom	1,061.45	6.290	0.60%	-4.6%	1,116.7	802.2	3.25	1.53	11.17	5.7%
Insurance	989.18	-3.640	-0.37%	3.7%	1,005.5	901.0	0.35	0.74	8.40	5.9%
Real estate	932.23	9.080	0.98%	-11.9%	1,083.4	763.2	1.96	0.64	22.96	2.5%
Financial services	914.65	2.330	0.26%	-15.5%	1,097.0	801.4	2.50	0.71	16.15	4.2%
Technology	507.79	29.090	6.08%	-1.4%	625.7	371.0	0.01	0.55	-67.70	5.7%
Utilities	878.95	2.630	0.30%	0.0%	1,042.1	781.6	0.37	4.80	29.87	0.0%
	5,447.16	52.33	0.97%	-13.2%	6,416.4	4,339.6	31.57	1.26	15.24	3.86%



YTD Sector Performance %



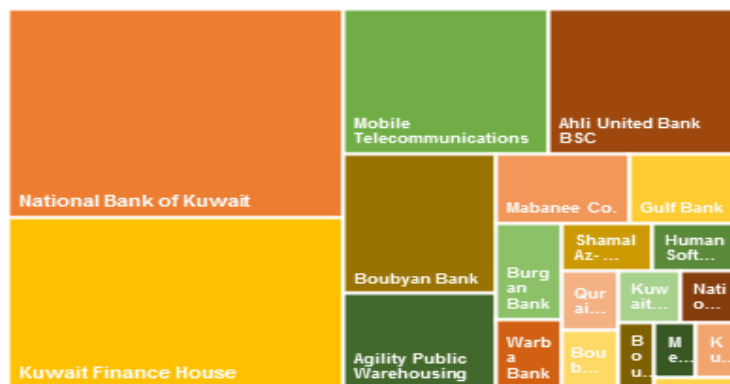
DAILY MARKET COVERAGE REPORT

NIC MENA SECURITIES - RESEARCH AND STUDIES DEP

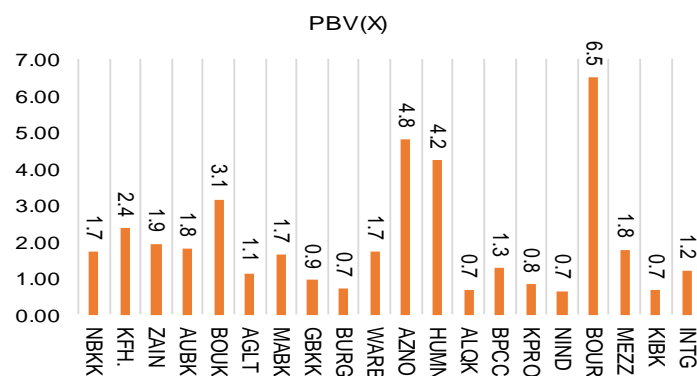


Premier Market	Price			Valuation Multiples			MKT Cap	Price Performance		Trading Indicators		ROE	ROA	52 Week (KD)	
	Close (KD)	Day Δ	Day % Δ	PBV(X)	PE(X)	DY%	Mn KD	MTD(%)	YTD (%)	Value (Mn KD)	(Mn Shrs)	(%)	(%)	High	Low
National Bank of Kuwait	0.871	0.005	0.58%	1.72	14.74	3.6%	5,915	1%	-14%	8.00	9.19	11.7%	1.4%	1.062	0.654
Kuwait Finance House	0.642	0.008	1.26%	2.36	19.41	2.6%	4,872	3%	-13%	9.77	15.27	12.2%	1.3%	0.761	0.473
Mobile Telecommunications	0.581	0.005	0.87%	1.94	11.59	5.4%	2,514	-1%	-3%	5.49	9.42	16.7%	4.6%	0.604	0.407
Ahli United Bank BSC	0.240	0.008	3.45%	1.81	10.57	5.1%	2,316	3%	-18%	7.89	33.28	17.1%	1.8%	0.311	0.160
Boubyan Bank	0.596	0.003	0.51%	3.14	28.81	1.1%	1,805	3%	-3%	2.52	4.25	10.9%	1.2%	0.638	0.380
Agility Public Warehousing	0.653	0.024	3.82%	1.14	14.40	2.8%	1,250	4%	-8%	4.61	7.14	7.9%	4.2%	0.748	0.357
Mabane Co.	0.710	0.020	2.90%	1.66	13.91	1.5%	785	11%	-17%	2.38	3.33	11.9%	5.8%	0.877	0.434
Gulf Bank	0.217	-0.002	-0.91%	0.95	9.90	4.6%	630	2%	-28%	3.79	17.44	9.6%	1.0%	0.317	0.180
Burgan Bank	0.204	0.000	0.00%	0.71	6.31	5.6%	535	3%	-33%	0.40	1.99	11.3%	1.2%	0.328	0.175
Warba Bank	0.241	0.011	4.78%	1.74	22.95	0.0%	380	22%	-8%	3.18	13.42	7.6%	0.5%	0.279	0.164
Shamal Az-Zour Al-Oula Power & Water	0.334	0.001	0.30%	4.80	29.87	0.0%	367	4%	0%	2.93	8.78	16.1%	2.3%	0.500	0.297
Human Soft Holding	2.790	-0.040	-1.41%	4.22	9.46	6.6%	339	11%	-7%	0.75	0.27	44.6%	30.3%	3.470	1.944
Qurain Petrochemical Industries	0.279	0.003	1.09%	0.68	10.09	5.5%	285	-3%	-11%	0.25	0.89	6.7%	3.6%	0.323	0.163
Boubyan Petrochemical	0.562	0.005	0.90%	1.27	23.97	9.2%	283	5%	-16%	0.28	0.50	5.3%	2.1%	0.800	0.395
Kuwait Projects Company Holding	0.154	0.001	0.65%	0.82	9.30	6.0%	279	3%	-29%	0.53	3.45	8.9%	0.3%	0.225	0.147
National Industries Group Holding	0.174	0.001	0.58%	0.66	5.36	6.2%	248	12%	-28%	0.90	5.15	12.3%	3.7%	0.247	0.121
Boursa Kuwait Securities Co	1.039	0.029	2.87%	6.50	21.75	0.0%	209	0%	0%	1.19	1.17	29.9%	26.5%	1.210	0.990
Mezzan Holding	0.621	0.005	0.81%	1.79	33.56	2.7%	189	-5%	23%	0.27	0.44	5.3%	2.2%	0.665	0.428
Kuwait International Bank	0.185	0.001	0.54%	0.67	11.00	5.4%	189	8%	-29%	1.40	7.57	6.1%	0.6%	0.270	0.162
Integrated Holding	0.380	0.005	1.33%	1.22	10.58	10.5%	84	8%	-31%	0.05	0.13	11.5%	8.5%	0.600	0.342
Total		75.93	1.28%	1.69	14.11	3.56%	23,474	2.8%	-13.8%	56.54	143.08	12.01%	1.56%		

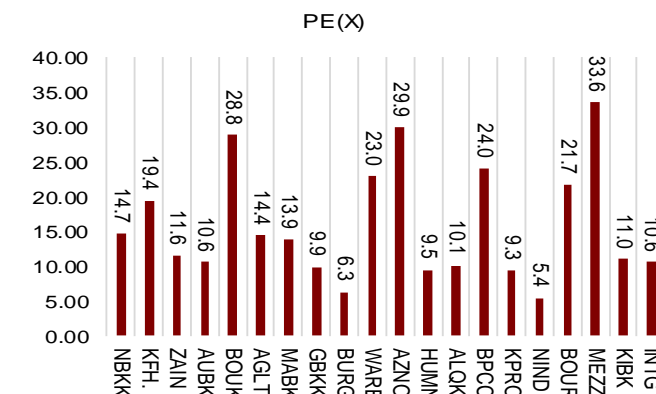
Market Capitalization



Price to Book Value

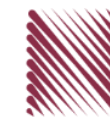


Price to Earning Value

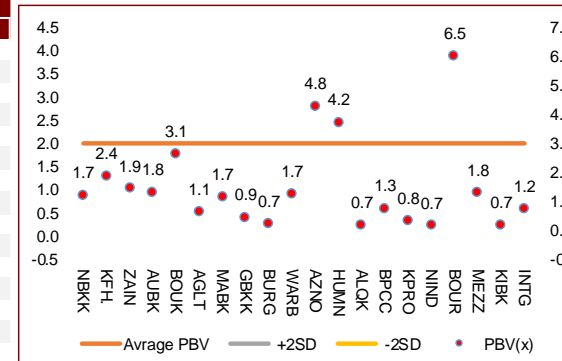


DAILY MARKET COVERAGE REPORT

NIC MENA SECURITIES - RESEARCH AND STUDIES DEP



Premier Market	Price			Valuation Multiples			MKT Cap	Price Performance		ROE	ROA
Company	Close (KD)	Day Δ	Day % Δ	PBV(X)	PE(X)	DY%	Mn KD	MTD(%)	YTD (%)	(%)	(%)
National Bank of Kuwait	0.871	0.005	0.58%	1.72	14.7	3.6%	5,915	1.4%	-14.4%	11.7%	1.4%
Kuwait Finance House	0.642	0.008	1.26%	2.36	19.4	2.6%	4,872	2.9%	-12.7%	12.2%	1.3%
Mobile Telecommunications	0.581	0.005	0.87%	1.94	11.6	5.4%	2,514	-1.0%	-2.7%	16.7%	4.6%
Ahli United Bank BSC	0.240	0.008	3.45%	1.81	10.6	5.1%	2,316	3.0%	-18.3%	17.1%	1.8%
Boubyan Bank	0.596	0.003	0.51%	3.14	28.8	1.1%	1,805	2.9%	-2.5%	10.9%	1.2%
Agility Public Warehousing	0.653	0.024	3.82%	1.14	14.4	2.8%	1,250	4.5%	-8.3%	7.9%	4.2%
Mabane Co.	0.710	0.020	2.90%	1.66	13.9	1.5%	785	11.5%	-16.8%	11.9%	5.8%
Gulf Bank	0.217	-0.002	-0.91%	0.95	9.9	4.6%	630	1.9%	-28.4%	9.6%	1.0%
Burgan Bank	0.204	0.000	0.00%	0.71	6.3	5.6%	535	2.5%	-33.2%	11.3%	1.2%
Warba Bank	0.241	0.011	4.78%	1.74	23.0	0.0%	380	21.6%	-7.6%	7.6%	0.5%
Shamal Az-Zour Al-Oula Power & Water	0.334	0.001	0.30%	4.80	29.9	0.0%	367	4.4%	0.0%	16.1%	2.3%
Human Soft Holding	2.790	-0.040	-1.41%	4.22	9.5	6.6%	339	11.2%	-6.7%	44.6%	30.3%
Qurain Petrochemical Industries	0.279	0.003	1.09%	0.68	10.1	5.5%	285	-2.8%	-10.6%	6.7%	3.6%
Boubyan Petrochemical	0.562	0.005	0.90%	1.27	24.0	9.2%	283	4.7%	-16.0%	5.3%	2.1%
Kuwait Projects Company Holding	0.154	0.001	0.65%	0.82	9.3	6.0%	279	2.7%	-29.2%	8.9%	0.3%
National Industries Group Holding	0.174	0.001	0.58%	0.66	5.4	6.2%	248	11.5%	-27.8%	12.3%	3.7%
Boursa Kuwait Securities Co	1.039	0.029	2.87%	6.50	21.7	0.0%	209	0.0%	0.0%	29.9%	26.5%
Mezzan Holding	0.621	0.005	0.81%	1.79	33.6	2.7%	189	-5.2%	23.2%	5.3%	2.2%
Kuwait International Bank	0.185	0.001	0.54%	0.67	11.0	5.4%	189	7.6%	-29.1%	6.1%	0.6%
Integrated Holding	0.380	0.005	1.33%	1.22	10.6	10.5%	84	8.0%	-31.4%	11.5%	8.5%
Total		75.93	1.28%	1.69	14.11	3.56%	23,474	2.8%	-13.8%	12.01%	1.56%



Premier Market	Price			Moving Average		RSI	MKT Cap	Price Performance		52 Week (KD)	
Description	Close (KD)	Day Δ	Day % Δ	50 Day	200 Day	14 Day	Mn KD	MTD(%)	YTD (%)	High	Low
Premier Index	6,010	75.93	1.28%	5,654	5,897	64	23,474	2.8%	-13.8%	7,172	4,499

Top 5 Performrs (Today's Price Change)

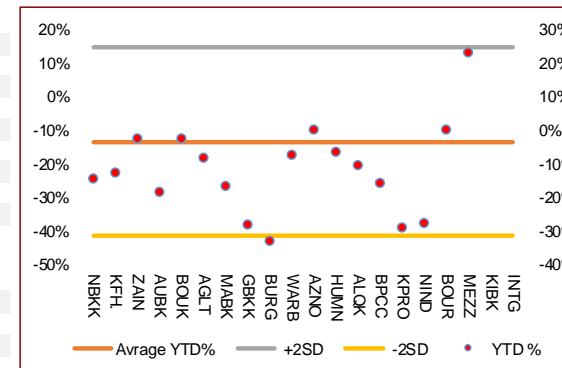
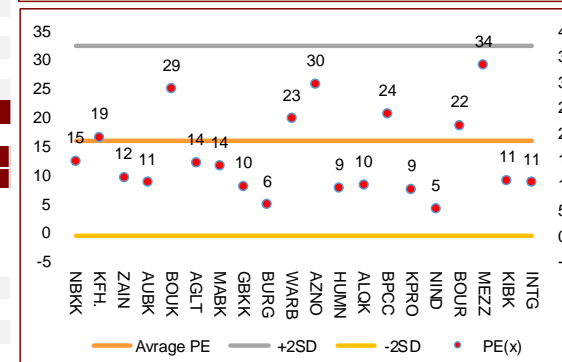
Warba Bank	0.241	0.011	4.78%	0.204	0.221	70	380	21.6%	-7.6%	0.279	0.164
Agility Public Warehousing	0.653	0.024	3.82%	0.636	0.613	56	1,250	4.5%	-8.3%	0.748	0.357
Ahli United Bank BSC	0.240	0.008	3.45%	0.206	0.228	58	2,316	3.0%	-18.3%	0.311	0.160
Mabane Co.	0.710	0.020	2.90%	0.636	0.685	75	785	11.5%	-16.8%	0.877	0.434
Boursa Kuwait Securities Co	1.039	0.029	2.87%	0.062	0.015	0	209	0.0%	0.0%	1.210	0.990

Middle Performrs (Today's Price Change)

Integrated Holding	0.380	0.005	1.33%	0.378	0.453	65	84	8.0%	-31.4%	0.600	0.342
Kuwait Finance House	0.642	0.008	1.26%	0.607	0.638	61	4,872	2.9%	-12.7%	0.761	0.473
Qurain Petrochemical Industries	0.279	0.003	1.09%	0.283	0.268	38	285	-2.8%	-10.6%	0.323	0.163
Boubyan Petrochemical	0.562	0.005	0.90%	0.564	0.582	64	283	4.7%	-16.0%	0.800	0.395
Mobile Telecommunications	0.581	0.005	0.87%	0.566	0.548	29	2,514	-1.0%	-2.7%	0.604	0.407
Mezzan Holding	0.621	0.005	0.81%	0.609	0.553	27	189	-5.2%	23.2%	0.665	0.428
Kuwait Projects Company Holding	0.154	0.001	0.65%	0.152	0.180	56	279	2.7%	-29.2%	0.225	0.147
National Bank of Kuwait	0.871	0.005	0.58%	0.822	0.852	50	5,915	1.4%	-14.4%	1.062	0.654
National Industries Group Holding	0.174	0.001	0.58%	0.160	0.187	86	248	11.5%	-27.8%	0.247	0.121
Kuwait International Bank	0.185	0.001	0.54%	0.100	0.100	73	189	7.6%	-29.1%	1.210	0.996

Bottom 5 Performrs (Today's Price Change)

Human Soft Holding	2.790	-0.040	-1.41%	2.681	2.811	83	339	11.2%	-6.7%	3.470	1.944
Gulf Bank	0.217	-0.002	-0.91%	0.207	0.239	67	630	1.9%	-28.4%	0.317	0.180
Burgan Bank	0.204	0.000	0.00%	0.193	0.234	75	535	2.5%	-33.2%	0.328	0.175
Shamal Az-Zour Al-Oula Power & Water	0.334	0.001	0.30%	0.152	0.038	63	367	4.4%	0.0%	0.500	0.297
Boubyan Bank	0.596	0.003	0.51%	0.553	0.541	74	1,805	2.9%	-2.5%	0.638	0.380



DAILY MARKET COVERAGE REPORT

NIC MENA SECURITIES - RESEARCH AND STUDIES DEP



Banking Sector	Price			Valuation Multiples			MKT Cap	Price Performance		Trading Indicators		ROE	ROA	52 Week (KD)	
	Company	Close (KD)	Day Δ	Day % Δ	PBV(X)	PE(X)		DY%	Mn KD	MTD(%)	YTD (%)			Value (Mn KD)	(Mn Shrs)
National Bank of Kuwait	0.871	0.005	0.58%	1.72	14.74	3.6%	5,915	1%	-14%	8.00	9.19	11.7%	1.4%	1.062	0.654
Kuwait Finance House	0.642	0.008	1.26%	2.36	19.41	2.6%	4,872	3%	-13%	9.77	15.27	12.2%	1.3%	0.761	0.473
Ahli United Bank BSC	0.240	0.008	3.45%	1.81	10.57	5.1%	2,316	3%	-18%	7.89	33.28	17.1%	1.8%	0.311	0.160
Boubyan Bank	0.596	0.003	0.51%	3.14	28.81	1.1%	1,805	3%	-3%	2.52	4.25	10.9%	1.2%	0.638	0.380
Commercial Bank of Kuwait	0.500	0.000	0.00%	1.32	0.00	3.7%	965	0%	-5%	0.00	0.00	0.0%	0.0%	0.555	0.465
Gulf Bank	0.217	-0.002	-0.91%	0.95	9.90	4.6%	630	2%	-28%	3.79	17.44	9.6%	1.0%	0.317	0.180
Ahli United Bank	0.289	0.002	0.70%	1.24	10.24	4.7%	564	10%	-12%	0.15	0.51	12.1%	1.3%	0.330	0.225
Burgan Bank	0.204	0.000	0.00%	0.71	6.31	5.6%	535	3%	-33%	0.40	1.99	11.3%	1.2%	0.328	0.175
Warba Bank	0.241	0.011	4.78%	1.74	22.95	0.0%	380	22%	-8%	3.18	13.42	7.6%	0.5%	0.279	0.164
Al Ahli Bank of Kuwait	0.187	-0.001	-0.53%	0.54	10.47	7.5%	300	10%	-27%	0.30	1.59	5.1%	0.6%	0.310	0.156
Kuwait International Bank	0.185	0.001	0.54%	0.67	11.00	5.4%	189	8%	-29%	1.40	7.57	6.1%	0.6%	0.270	0.162
Total Banking Sector - 11 Companies				1.68	15.39	3.4%	18,470			37.38	104.52	10.90%	1.21%		

Basic materials	Price			Valuation Multiples			MKT Cap	Price Performance		Trading Indicators		ROE	ROA	52 Week (KD)	
	Company	Close (KD)	Day Δ	Day % Δ	PBV(X)	PE(X)		DY%	Mn KD	MTD(%)	YTD (%)			Value (Mn KD)	(Mn Shrs)
Qurain Petrochemical Industries	0.279	0.003	1.09%	0.68	10.09	5.5%	285	-3%	-11%	0.25	0.89	6.7%	3.6%	0.323	0.163
Boubyan Petrochemical	0.562	0.005	0.90%	1.27	23.97	9.2%	283	5%	-16%	0.28	0.50	5.3%	2.1%	0.800	0.395
Al Kout Industrial Projects	0.769	0.000	0.00%	2.50	16.21	6.5%	78	0%	-10%	0.00	0.00	15.4%	11.3%	0.850	0.769
Kuwait Foundry	0.246	-0.004	-1.60%	0.82	19.88	21.7%	18	3%	-27%	0.00	0.00	4.1%	3.8%	0.510	0.192
Total Basic materials - 4 Companies				0.95	14.51	7.6%	664			0.53	1.39	6.57%	5.07%		

Consumer goods	Price			Valuation Multiples			MKT Cap	Price Performance		Trading Indicators		ROE	ROA	52 Week (KD)	
	Company	Close (KD)	Day Δ	Day % Δ	PBV(X)	PE(X)		DY%	Mn KD	MTD(%)	YTD (%)			Value (Mn KD)	(Mn Shrs)
Mezzan Holding	0.621	0.005	0.81%	1.79	33.56	2.7%	189	-5%	23%	0.27	0.44	5.3%	2.2%	0.665	0.428
Livestock Transport and Trading	0.183	-0.002	-1.08%	0.95	32.62	0.1%	38	-1%	5%	0.01	0.06	2.9%	2.0%	0.200	0.152
Danah Al Safat Foodstuff	0.012	0.000	0.00%	0.25	(0.30)	0.1%	1	0%	-25%	0.00	0.00	-84.8%	-43.2%	0.029	0.010
Total Basic materials - 3 Companies				1.52	92.65	2.2%	229			0.28	0.49	1.64%	0.90%		

DAILY MARKET COVERAGE REPORT

NIC MENA SECURITIES - RESEARCH AND STUDIES DEP



Consumer services		Price			Valuation Multiples			MKT Cap	Price Performance		Trading Indicators		ROE	ROA	52 Week (KD)	
Company	Close (KD)	Day Δ	Day % Δ	PBV(X)	PE(X)	DY%	Mn KD	MTD(%)	YTD (%)	Value (Mn KD)	(Mn Shrs)	(%)	(%)	High	Low	
Jazeera Airways	0.576	-0.003	-0.52%	2.86	7.71	6.1%	115	3%	-47%	0.05	0.09	37.1%	9.0%	1.110	0.372	
Kuwait National Cinema	0.700	0.000	0.00%	0.80	7.57	6.9%	65	4%	-33%	0.00	0.00	10.6%	7.2%	1.050	0.600	
Oula Fuel Marketing	0.110	0.000	0.00%	0.66	11.51	5.4%	45	-1%	-13%	0.03	0.26	5.7%	3.2%	0.134	0.095	
Al Soor Fuel Marketing	0.111	0.002	1.83%	0.68	12.99	4.5%	45	1%	-11%	0.00	0.01	5.3%	3.7%	0.129	0.096	
Sultan Center Food Products	0.055	-0.001	-1.25%	0.69	13.92	0.0%	31	1%	6%	0.00	0.04	4.9%	0.7%	0.060	0.036	
IFA Hotels and Resorts	0.024	0.000	-1.65%	0.86	(0.65)	0.0%	15	-4%	-57%	0.00	0.02	-131.5%	-8.1%	0.062	0.021	
Jiyad Holding	0.040	0.000	0.00%	0.36	8.02	0.0%	14	23%	3%	0.01	0.19	4.5%	2.8%	0.047	0.029	
Kuwait Resorts	0.054	0.000	0.00%	0.37	9.84	0.0%	10	19%	-6%	0.16	2.96	3.8%	3.2%	0.060	0.038	
Alrai Media Group	0.037	0.000	0.00%	0.83	(2.41)	0.0%	9	0%	-2%	0.00	0.00	-34.2%	-20.0%	0.045	0.031	
Future Kid Entertainment and Real Estate	0.077	0.000	0.00%	0.44	28.90	15.1%	8	0%	-13%	0.00	0.00	1.5%	0.9%	0.110	0.069	
Al Eid Food	0.065	0.005	8.83%	0.37	4.35	0.0%	7	18%	-1%	0.00	0.04	8.4%	6.1%	0.096	0.046	
Kuwait Hotels	0.086	0.000	0.00%	1.21	(4.97)	0.0%	5	-2%	-14%	0.00	0.00	-24.4%	-13.2%	0.101	0.069	
Palms Agro Production	0.065	0.006	9.24%	0.55	(45.82)	15.3%	3	5%	48%	0.00	0.00	-1.2%	-0.9%	0.062	0.025	
Kuwait Cable Vision	0.014	0.000	0.00%	0.52	(11.65)	0.0%	1	0%	0%	0.00	0.00	-4.5%	-3.0%	0.026	0.012	
Total Consumer services - 14 Companies				0.84	35.34	4.7%	372			0.26	3.61	2.38%	2.72%			

Financial services		Price			Valuation Multiples			MKT Cap	Price Performance		Trading Indicators		ROE	ROA	52 Week (KD)	
Company	Close (KD)	Day Δ	Day % Δ	PBV(X)	PE(X)	DY%	Mn KD	MTD(%)	YTD (%)	Value (Mn KD)	(Mn Shrs)	(%)	(%)	High	Low	
Egypt Kuwait Holding	0.370	0.000	0.00%	2.19	12.49	5.3%	379	-1%	-18%	0.00	0.00	17.6%	7.1%	0.500	0.318	
Kuwait Projects Company Holding	0.154	0.001	0.65%	0.82	9.30	6.0%	279	3%	-29%	0.53	3.45	8.9%	0.3%	0.225	0.147	
National Industries Group Holding	0.174	0.001	0.58%	0.66	5.36	6.2%	248	12%	-28%	0.90	5.15	12.3%	3.7%	0.247	0.121	
Boursa Kuwait Securities Co	1.039	0.029	2.87%	6.50	21.75	0.0%	209	0%	0%	1.19	1.17	29.9%	26.5%	1.210	0.990	
GFH Financial Group	0.051	-0.001	-1.73%	0.55	6.95	5.6%	173	1%	-25%	0.04	0.78	8.0%	1.3%	0.074	0.042	
Tamdeen Investment	0.320	-0.001	-0.31%	0.39	13.27	3.7%	109	29%	-7%	0.00	0.00	3.0%	2.2%	0.400	0.199	
National Investments	0.134	0.000	0.00%	0.59	9.97	6.0%	107	12%	-4%	0.32	2.37	5.9%	5.0%	0.158	0.080	
Alimtiq Investment Group	0.095	0.003	2.81%	0.45	4.95	8.4%	98	11%	-25%	0.45	4.82	9.1%	5.2%	0.137	0.071	
Commercial Facilities	0.184	0.001	0.55%	0.57	7.09	9.1%	93	0%	-15%	0.02	0.08	8.0%	4.2%	0.235	0.179	
Noor Financial Investment	0.170	-0.004	-2.30%	1.04	8.31	2.9%	67	5%	43%	0.03	0.15	12.5%	7.5%	0.184	0.076	
Aayan Leasing and Investment	0.084	0.000	0.00%	0.98	(4.61)	2.1%	67	42%	80%	4.31	51.28	-21.4%	-4.9%	0.102	0.032	
Kuwait Investment	0.118	-0.002	-1.67%	0.51	3.69	8.5%	65	5%	-21%	0.14	1.18	13.9%	6.0%	0.172	0.095	

DAILY MARKET COVERAGE REPORT

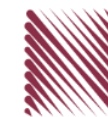
NIC MENA SECURITIES - RESEARCH AND STUDIES DEP



Financial services	Price			Valuation Multiples			MKT Cap	Price Performance		Trading Indicators		ROE	ROA	52 Week (KD)		
	Company	Close (KD)	Day Δ	Day % Δ	PBV(X)	PE(X)	DY%	Mn KD	MTD(%)	YTD (%)	Value (Mn KD)	(Mn Shrs)	(%)	(%)	High	Low
Arzan Financial Group for Financing and Invest	0.056	0.001	1.64%	0.45	40.57	0.0%	44	-4%	135%	0.74	13.41	1.1%	0.7%	0.064	0.022	
Gulf Investment House	0.097	-0.001	-0.52%	1.08	178.50	0.0%	39	4%	50%	0.13	1.39	0.6%	0.5%	0.100	0.038	
Kuwait Financial Centre	0.081	-0.001	-1.10%	0.41	5.57	6.1%	39	1%	-23%	0.41	4.96	7.3%	3.5%	0.121	0.070	
Al Bareeq Holding	0.088	0.000	0.00%	0.92	17.48	0.0%	38	-17%	-12%	0.00	0.00	5.2%	5.0%	0.110	0.088	
Arabi Group Holdings	0.198	0.000	0.00%	1.07	(19.90)	0.0%	33	0%	-28%	0.00	0.00	-5.4%	-0.6%	0.337	0.079	
Kuwait and Middle East Financial Investment	0.118	0.000	0.00%	1.92	47.12	0.0%	31	3%	32%	0.03	0.26	4.1%	3.2%	0.138	0.063	
Umm Al Qaiwain General Investment Co	0.070	-0.004	-4.89%	0.47	13.16	5.2%	25	-21%	5%	0.03	0.48	3.6%	3.3%	0.096	0.052	
Privatization Holding	0.042	0.000	0.00%	0.31	(37.87)	0.0%	26	0%	-15%	0.00	0.00	-0.8%	-0.5%	0.059	0.037	
Asiya Capital Investments	0.034	0.002	4.63%	0.36	17.47	0.2%	26	9%	-17%	0.00	0.05	2.1%	2.0%	0.041	0.029	
Securities House	0.045	0.000	0.67%	0.61	(65.50)	0.0%	25	11%	-2%	0.12	2.66	-0.9%	-0.7%	0.050	0.027	
KAMCO Investment	0.072	0.000	0.42%	0.44	8.16	0.0%	25	3%	-20%	0.02	0.25	5.4%	2.3%	0.111	0.060	
Coast Investment and Development	0.036	0.000	0.28%	0.38	35.78	0.0%	21	6%	-10%	0.01	0.26	1.1%	1.0%	0.045	0.026	
Invest BSC Public	0.070	0.000	-0.29%	0.48	9.35	8.5%	21	23%	9%	0.00	0.05	5.2%	2.9%	0.072	0.044	
First Investment	0.030	-0.001	-1.67%	0.46	(0.40)	0.0%	19	-1%	-14%	0.01	0.50	-113.6%	-62.0%	0.045	0.022	
Al Madar Finance and Investment	0.087	0.001	0.81%	0.79	12.96	0.0%	18	2%	-6%	0.07	0.82	6.1%	5.0%	0.148	0.062	
Bayan Investment	0.045	0.001	1.36%	0.45	(23.10)	0.0%	16	-16%	6%	0.00	0.08	-1.9%	-0.8%	0.053	0.031	
Manazel Holding	0.035	0.001	3.56%	0.77	22.43	0.0%	15	5%	-12%	0.21	6.01	3.4%	0.8%	0.048	0.021	
Kuwait Finance and Investment	0.045	0.000	0.67%	0.36	20.34	0.0%	14	1%	-8%	0.00	0.10	1.8%	1.2%	0.058	0.038	
Al Manar Financing and Leasing	0.044	0.000	0.00%	0.40	11.42	1.2%	14	-5%	-14%	0.00	0.00	3.5%	2.7%	0.060	0.037	
National International Holding	0.063	0.000	0.00%	0.33	7.58	4.7%	13	4%	-14%	0.00	0.00	4.4%	3.3%	0.081	0.049	
Osoul Investment	0.081	-0.001	-0.85%	0.61	6.83	0.0%	13	-3%	8%	0.01	0.17	9.0%	8.2%	0.121	0.070	
UniCap Investment and Finance	0.046	0.001	1.56%	0.46	(22.88)	0.0%	11	23%	-17%	0.03	0.67	-2.0%	-1.0%	0.057	0.035	
Amar Finance and Leasing	0.053	0.000	0.00%	0.59	44.37	0.0%	10	3%	39%	0.00	0.00	1.3%	1.2%	0.064	0.037	
Gulf North Africa Holding	0.056	0.000	-0.71%	0.74	71.89	0.0%	8	0%	-10%	0.02	0.35	1.0%	0.6%	0.062	0.052	
International Financial Advisors	0.031	0.000	0.00%	0.93	(0.42)	2.1%	8	0%	-42%	0.00	0.00	-222.8%	-19.3%	0.060	0.027	
Al Salam Group Holding	0.026	0.000	-0.76%	0.23	197.79	0.0%	7	12%	-12%	0.06	2.29	0.1%	0.1%	0.033	0.018	
Amwal International Investment	0.030	0.000	0.00%	0.55	10.90	0.0%	5	-18%	-2%	0.00	0.00	5.0%	2.6%	0.055	0.030	
Al Madina for Finance and Investment	0.013	0.000	-1.54%	0.43	(2.41)	0.0%	5	20%	-15%	0.02	1.43	-17.9%	-7.7%	0.019	0.009	
Credit Rating and Collection	0.029	-0.002	-4.85%	0.90	(19.78)	0.0%	5	-12%	55%	0.00	0.00	-4.6%	-4.3%	0.035	0.019	
Ekttitab Holding	0.015	0.000	-1.99%	0.36	(10.42)	0.0%	5	13%	-3%	0.01	0.82	-3.4%	-3.0%	0.017	0.010	
National Consumer Holding	0.051	0.000	0.00%	0.57	252.38	0.0%	5	-6%	-7%	0.00	0.00	0.2%	0.2%	0.100	0.010	
Warba Capital Holding	0.045	0.000	-0.66%	0.50	(7.18)	0.0%	5	-9%	-30%	0.01	0.20	-7.0%	-6.2%	0.075	0.045	
Kuwait Syrian Holding Co	0.025	0.000	-0.40%	0.22	(12.88)	0.0%	4	-5%	-20%	0.00	0.00	-1.7%	-1.1%	0.043	0.022	
Al Deera Holding	0.016	0.000	0.00%	0.70	(9.02)	0.0%	3	0%	-20%	0.00	0.00	-7.7%	-1.7%	0.022	0.011	
Al Mal Investment Company	0.009	0.000	0.00%	0.40	(0.85)	0.0%	3	0%	-9%	0.01	1.50	-47.6%	-23.3%	0.016	0.008	
Gulf Franchising Holding	0.050	0.000	0.00%	0.79	(2.18)	0.0%	2	-14%	-33%	0.00	0.00	-36.2%	-10.8%	0.160	0.001	
Tamkeen Holding	0.005	0.000	0.00%	0.05	(7.18)	0.0%	0	0%	0%	0.00	0.00	-0.7%	-0.7%	0.005	0.005	
Total Financial services - 49 Companies				0.71	16.15	4.2%	2,495				9.89	109.16	4.42%	4.14%		

DAILY MARKET COVERAGE REPORT

NIC MENA SECURITIES - RESEARCH AND STUDIES DEP



Health care	Price			Valuation Multiples			MKT Cap	Price Performance		Trading Indicators		ROE	ROA	52 Week (KD)	
Company	Close (KD)	Day Δ	Day % Δ	PBV(X)	PE(X)	DY%	Mn KD	MTD(%)	YTD (%)	Value (Mn KD)	(Mn Shrs)	(%)	(%)	High	Low
Al-Maidan Clinic for Oral Health Services	1.220	0.000	0.00%	7.90	47.78	0.6%	305	0%	0%	0.00	0.00	16.5%	10.9%	1.240	1.220
Advanced Technology	0.627	0.000	0.00%	1.63	51.04	2.4%	94	0%	-23%	0.00	0.00	3.2%	0.7%	0.900	0.580
Yiaco Medical	0.707	0.000	0.00%	6.06	52.72	0.0%	12	0%	0%	0.00	0.00	11.5%	0.6%	0.707	0.707
Total Health care - 3 Companies				4.19	48.62	1.0%	411			0.00	0.00	8.61%	4.68%		

Industrials	Price			Valuation Multiples			MKT Cap	Price Performance		Trading Indicators		ROE	ROA	52 Week (KD)	
Company	Close (KD)	Day Δ	Day % Δ	PBV(X)	PE(X)	DY%	Mn KD	MTD(%)	YTD (%)	Value (Mn KD)	(Mn Shrs)	(%)	(%)	High	Low
Agility Public Warehousing	0.653	0.024	3.82%	1.14	14.40	2.8%	1,250	4%	-8%	4.61	7.14	7.9%	4.2%	0.748	0.357
Human Soft Holding	2.790	-0.040	-1.41%	4.22	9.46	6.6%	339	11%	-7%	0.75	0.27	44.6%	30.3%	3.470	1.944
ALAFCO Aviation Lease and Finance	0.166	0.003	1.84%	0.50	8.93	6.0%	158	6%	-39%	1.94	11.68	5.5%	1.4%	0.278	0.138
Kuwait Cement	0.196	0.001	0.51%	0.67	34.79	7.6%	140	13%	-20%	0.39	2.05	1.9%	1.3%	0.270	0.144
Gulf Cable and Electrical Industries	0.670	0.003	0.45%	0.81	33.23	4.1%	141	4%	37%	0.19	0.28	2.4%	2.2%	0.742	0.390
Integrated Holding	0.380	0.005	1.33%	1.22	10.58	10.5%	84	8%	-31%	0.05	0.13	11.5%	8.5%	0.600	0.342
Kuwait Portland Cement	0.765	-0.005	-0.65%	1.03	10.10	12.8%	77	5%	-22%	0.08	0.10	10.2%	8.2%	1.208	0.683
United Projects for Aviation Services	0.465	0.000	0.00%	0.98	7.96	4.5%	74	0%	-9%	0.00	0.00	12.3%	7.8%	0.512	0.367
Educational Holding Group	0.300	0.009	3.09%	1.74	9.50	5.0%	74	0%	-32%	0.00	0.00	18.3%	16.7%	0.475	0.228
Heavy Engineering Industries and Shipbuilding	0.374	0.006	1.63%	1.08	6.01	7.8%	67	2%	-8%	0.22	0.60	18.0%	5.9%	0.419	0.298
National Industries	0.155	0.000	0.00%	0.64	12.63	6.4%	54	-5%	-6%	0.01	0.05	5.1%	3.8%	0.173	0.143
ACICO Industries	0.107	0.001	0.94%	0.34	13.93	4.6%	35	14%	-20%	0.01	0.09	2.5%	0.6%	0.144	0.081
Kuwait Company for Process Plant Constructi	0.307	-0.003	-0.97%	1.21	6.58	5.8%	33	-1%	28%	0.05	0.17	18.5%	7.7%	0.337	0.175
Ras Al Khaimah for White Cement and Constr	0.065	0.000	0.00%	0.51	19.94	8.4%	33	0%	0%	0.00	0.00	2.6%	2.0%	0.080	0.055
Gulf Cement	0.035	0.001	4.18%	0.35	(12.73)	11.9%	29	16%	-36%	0.01	0.19	-2.7%	-2.2%	0.062	0.029
Combined Group Contracting	0.175	0.004	2.34%	0.61	7.88	11.7%	29	13%	-29%	0.80	4.57	7.7%	1.2%	0.251	0.138
Sharjah Cement and Industrial Development	0.042	0.000	0.00%	0.21	25.32	12.4%	26	0%	0%	0.00	0.00	0.8%	0.6%	0.064	0.042
KGL Logistics	0.027	0.000	0.00%	0.20	4.45	0.1%	21	10%	-27%	0.00	0.00	4.6%	2.9%	0.043	0.023
Shuaiba Industrial	0.130	0.000	0.00%	0.72	40.15	7.6%	13	5%	-16%	0.00	0.00	1.8%	1.4%	0.180	0.122
Kuwait and Gulf Link Transport	0.045	0.000	0.45%	0.19	13.58	0.0%	12	-2%	-34%	0.02	0.54	1.4%	0.4%	0.077	0.042
National Cleaning	0.054	0.000	0.00%	0.32	7.19	9.4%	11	3%	-22%	0.00	0.02	4.4%	1.5%	0.088	0.047
Fujairah Cement Industries	0.034	0.001	2.10%	0.14	16.49	12.4%	12	8%	-24%	0.00	0.09	0.8%	0.4%	0.052	0.029
Mubarrad Holding	0.061	0.000	0.66%	0.48	9.78	7.7%	10	9%	-31%	0.06	1.01	4.9%	4.1%	0.089	0.049
Hilal Cement	0.100	0.000	0.00%	0.87	(8.18)	15.1%	10	-13%	0%	0.00	0.00	-10.6%	-6.2%	0.126	0.063
Specialities Group Holding	0.064	0.003	4.75%	0.35	7.61	0.0%	10	7%	-16%	0.11	1.73	4.5%	3.5%	0.078	0.050
National Ranges	0.014	-0.001	-6.67%	0.25	(1.02)	0.0%	4	-16%	35%	0.02	1.20	-24.9%	-5.3%	0.018	0.007
Metal and Recycling	0.041	0.000	0.00%	0.34	(1.73)	0.0%	4	-6%	-18%	0.00	0.00	-19.7%	-10.1%	0.070	0.020
Salbookh Trading	0.035	0.000	0.57%	0.48	(2.06)	0.0%	4	28%	-30%	0.00	0.01	-23.2%	-15.9%	0.051	0.026
Equipment Holding	0.016	0.000	1.23%	0.33	(189.38)	0.0%	2	11%	-25%	0.00	0.13	-0.2%	-0.1%	0.024	0.013
Total Industrials - 29 Companies				0.88	13.12	5.1%	2,754			9.32	32.06	6.67%	5.05%		

DAILY MARKET COVERAGE REPORT

NIC MENA SECURITIES - RESEARCH AND STUDIES DEP



Insurance	Price			Valuation Multiples			MKT Cap	Price Performance		Trading Indicators		ROE	ROA	52 Week (KD)	
Company	Close (KD)	Day Δ	Day % Δ	PBV(X)	PE(X)	DY%	Mn KD	MTD(%)	YTD (%)	Value (Mn KD)	(Mn Shrs)	(%)	(%)	High	Low
Gulf Insurance Group	0.615	0.005	0.82%	1.05	8.58	6.0%	115	0%	-7%	0.00	0.00	12.3%	1.7%	0.680	0.550
Al Ahleia Insurance	0.396	-0.014	-3.41%	0.75	7.98	8.5%	82	4%	-3%	0.38	0.97	9.4%	3.3%	0.424	0.367
Kuwait Insurance	0.355	0.002	0.57%	0.58	6.88	6.7%	66	1%	8%	0.00	0.01	8.5%	4.6%	0.387	0.300
Kuwait Reinsurance	0.211	0.000	0.00%	0.80	9.03	2.1%	43	8%	53%	0.00	0.00	8.9%	3.2%	0.211	0.126
Bahrain Kuwait Insurance	0.200	0.000	0.00%	0.93	12.87	6.1%	28	0%	0%	0.00	0.00	7.2%	1.1%	0.200	0.200
Warba Insurance	0.078	0.002	2.63%	0.34	11.07	0.0%	13	-1%	29%	0.00	0.00	3.1%	1.0%	0.094	0.051
First Takaful Insurance	0.040	0.000	0.00%	0.48	5.04	0.0%	4	0%	4%	0.00	0.00	9.6%	5.9%	0.056	0.031
Wethaq Takaful Insurance	0.023	0.000	0.43%	0.21	(29.61)	0.0%	3	-2%	-6%	0.00	0.00	-0.7%	-0.7%	0.035	0.018
Total Insurance - 8 Companies				0.74	8.40	5.9%	353			0.39	0.98	8.86%	3.00%		

Oil and Gas	Price			Valuation Multiples			MKT Cap	Price Performance		Trading Indicators		ROE	ROA	52 Week (KD)	
Company	Close (KD)	Day Δ	Day % Δ	PBV(X)	PE(X)	DY%	Mn KD	MTD(%)	YTD (%)	Value (Mn KD)	(Mn Shrs)	(%)	(%)	High	Low
National Petroleum Services	1.100	0.040	3.77%	2.62	9.38	6.4%	107	10%	-6%	0.01	0.01	27.9%	23.6%	1.389	0.903
Independent Petroleum Group	0.430	0.000	0.00%	0.79	11.72	7.0%	78	-4%	-11%	0.00	0.00	6.8%	2.2%	0.497	0.375
Burgan for Well Drilling Trading and Mainten	0.073	-0.001	-1.48%	0.26	7.42	0.0%	17	6%	-9%	0.00	0.00	3.6%	1.1%	0.098	0.060
Energy House Holding	0.023	0.001	4.65%	0.69	(3.09)	0.0%	17	13%	-1%	0.00	0.01	-22.5%	-17.0%	0.036	0.014
Gulf Petroleum Investment	0.019	0.000	-0.52%	0.21	(6.12)	0.0%	9	-2%	-5%	0.30	15.96	-3.4%	-2.3%	0.024	0.012
Senegy Holding	0.018	-0.001	-2.70%	0.36	(0.75)	0.0%	4	9%	-19%	0.00	0.01	-47.9%	-30.4%	0.027	0.014
Total Oil and Gas - 6 Companies				0.83	26.74	5.3%	230			0.31	15.99	3.10%	2.18%		

Real estate	Price			Valuation Multiples			MKT Cap	Price Performance		Trading Indicators		ROE	ROA	52 Week (KD)	
Company	Close (KD)	Day Δ	Day % Δ	PBV(X)	PE(X)	DY%	Mn KD	MTD(%)	YTD (%)	Value (Mn KD)	(Mn Shrs)	(%)	(%)	High	Low
Mabane Co.	0.710	0.020	2.90%	1.66	13.91	1.5%	785	11%	-17%	2.38	3.33	11.9%	5.8%	0.877	0.434
Salhia Real Estate	0.394	0.003	0.77%	1.19	9.05	5.1%	195	-1%	-6%	0.09	0.23	13.2%	5.8%	0.460	0.324
Commercial Real Estate	0.103	-0.002	-1.90%	0.63	12.76	5.6%	186	10%	12%	0.12	1.15	5.0%	2.7%	0.111	0.083
National Real Estate	0.074	0.000	0.14%	0.41	9.69	0.0%	111	5%	-15%	0.09	1.26	4.2%	2.4%	0.090	0.058
Tamdeen Real Estate	0.251	0.003	1.21%	0.36	12.25	4.0%	101	0%	-22%	0.00	0.01	3.0%	2.2%	0.343	0.241
Kuwait Real Estate	0.099	-0.002	-1.68%	0.69	12.61	0.4%	89	6%	-6%	0.28	2.82	5.5%	2.2%	0.115	0.070
United Real Estate	0.050	0.001	1.01%	0.29	(7.44)	0.0%	54	-3%	-21%	0.01	0.15	-3.9%	-1.2%	0.063	0.045
First Dubai for Real Estate Development	0.040	-0.001	-2.18%	0.54	44.30	1.0%	40	6%	14%	0.11	2.74	1.2%	1.0%	0.055	0.027
Al Mazaya Holding	0.054	0.000	0.56%	0.43	(3.88)	0.1%	34	5%	-10%	0.04	0.81	-11.0%	-3.8%	0.067	0.047
Ajial Real Estate Entertainment	0.137	0.001	0.74%	0.21	13.24	0.0%	26	6%	-19%	0.01	0.10	1.6%	1.4%	0.213	0.115
Injazzat Real Estate Development	0.076	0.000	0.00%	0.48	(3.63)	9.1%	25	2%	-5%	0.00	0.00	-13.4%	-7.0%	0.091	0.061

DAILY MARKET COVERAGE REPORT

NIC MENA SECURITIES - RESEARCH AND STUDIES DEP



Real estate Company	Price			Valuation Multiples			MKT Cap	Price Performance		Trading Indicators		ROE	ROA	52 Week (KD)	
	Close (KD)	Day Δ	Day % Δ	PBV(X)	PE(X)	DY%	Mn KD	MTD(%)	YTD (%)	Value (Mn KD)	(Mn Shrs)	(%)	(%)	High	Low
Aayan Real Estate	0.060	0.000	-0.67%	0.35	11.64	8.0%	25	16%	-19%	0.01	0.17	3.0%	1.9%	0.080	0.048
Ream Real Estate	0.204	0.000	0.00%	1.56	(8.21)	1.1%	22	0%	132%	0.00	0.00	-19.0%	-10.1%	0.204	0.060
Arkan Al Kuwait Real Estate	0.086	0.000	0.00%	0.61	9.26	9.1%	21	2%	-4%	0.00	0.00	6.6%	3.5%	0.100	0.076
Al Argan International Real Estate	0.089	0.006	7.10%	0.26	28.85	5.5%	23	2%	-15%	0.00	0.01	0.9%	0.3%	0.141	0.060
Al-Enmaa Real Estate	0.046	-0.001	-1.72%	0.46	12.08	0.0%	21	6%	-26%	0.03	0.59	3.8%	2.4%	0.079	0.037
Munshaat Real Estate Projects	0.065	0.000	0.00%	0.44	23.81	3.3%	21	29%	-13%	0.00	0.00	1.8%	0.7%	0.085	0.045
Dalqan Real Estate	0.350	0.000	0.00%	2.91	59.01	0.0%	19	0%	0%	0.00	0.00	4.9%	4.9%	0.350	0.350
Kuwait Business Town Real Estate	0.029	0.004	13.73%	0.27	7.40	0.3%	18	23%	-33%	0.80	28.03	3.6%	2.7%	0.046	0.022
Sokouk Holding	0.026	0.000	-0.38%	0.32	(4.39)	0.0%	15	13%	-25%	0.01	0.55	-7.4%	-4.7%	0.040	0.022
Tijara and Realestate Investment	0.038	-0.001	-2.56%	0.36	10.00	5.2%	14	-10%	-24%	0.00	0.00	3.6%	1.9%	0.055	0.034
Dar Al Thuraya Real Estate	0.074	-0.018	-19.54%	0.70	19.53	0.0%	11	-36%	17%	0.01	0.20	3.6%	3.6%	0.190	0.040
Aqar Real Estate Investments	0.060	-0.002	-3.38%	0.43	5.01	8.3%	13	-8%	-25%	0.01	0.09	8.7%	7.3%	0.089	0.058
Al-Arabiya Real Estate	0.024	-0.001	-2.83%	0.21	7.28	2.6%	12	9%	-15%	0.02	0.89	2.9%	1.1%	0.033	0.020
Mashaer Holding	0.061	-0.001	-1.63%	0.46	6.51	0.0%	11	11%	-22%	0.01	0.10	7.1%	5.0%	0.086	0.048
Osos Holding Group	0.092	0.000	-0.11%	0.73	6.92	10.3%	10	-3%	-8%	0.00	0.00	10.5%	7.0%	0.118	0.083
Investors Holding Group	0.013	0.000	2.31%	0.67	(0.63)	0.0%	8	-1%	66%	1.21	93.92	-106.5%	-57.2%	0.032	0.007
Abyaar Real Estate Development	0.007	0.000	-1.37%	0.21	(0.51)	0.0%	8	0%	-6%	0.02	3.29	-40.9%	-12.4%	0.014	0.005
Al Massaleh Real Estate	0.034	0.000	0.00%	0.38	(4.77)	0.0%	8	18%	-8%	0.00	0.00	-8.1%	-1.9%	0.040	0.026
Kuwait Remal Real Estate	0.021	-0.001	-3.64%	0.32	(2.91)	0.0%	6	46%	-13%	0.00	0.08	-11.0%	-3.9%	0.027	0.013
Kuwait Real Estate Holding	0.026	0.000	0.00%	0.04	0.70	6.8%	5	3%	-8%	0.00	0.00	5.5%	2.2%	0.034	0.022
Taameer Real Estate Investment	0.020	0.001	2.55%	0.30	(4.25)	0.0%	5	7%	-24%	0.02	1.07	-7.0%	-4.5%	0.034	0.013
Real Estate Trade Centers	0.029	0.000	0.00%	0.16	167.41	0.0%	4	16%	26%	0.00	0.00	0.1%	0.1%	0.050	0.018
Sanam Real Estate	0.030	-0.002	-4.84%	0.37	39.95	0.0%	4	-2%	-26%	0.00	0.02	0.9%	0.9%	0.043	0.027
Mena Real Estate	0.027	0.000	0.00%	0.19	(60.84)	0.0%	4	10%	-35%	0.02	0.69	-0.3%	-0.2%	0.043	0.021
Al Masaken International Real Estate Developr	0.033	0.003	10.00%	0.36	39.86	0.5%	3	-4%	-32%	0.00	0.00	0.9%	0.4%	0.074	0.026
Ajwan Gulf Real Estate	0.011	0.000	0.00%	0.19	(7.68)	0.0%	2	0%	-29%	0.00	0.00	-2.5%	-2.2%	0.016	0.009
Effect Real Estate	0.021	0.000	0.00%	0.29	(8.85)	4.9%	2	0%	0%	0.00	0.00	-3.3%	-3.2%	0.021	0.021
Al Mudon International Real Estate	0.016	0.000	0.00%	0.12	(8.22)	0.0%	2	0%	-35%	0.00	0.00	-1.5%	-1.4%	0.029	0.015
Total Real estate - 39 Companies				0.64	22.96	2.5%	1,961			5.31	142.29	2.79%	2.96%		

DAILY MARKET COVERAGE REPORT

NIC MENA SECURITIES - RESEARCH AND STUDIES DEP



Technology	Price			Valuation Multiples			MKT Cap	Price Performance		Trading Indicators		ROE	ROA	52 Week (KD)	
	Company	Close (KD)	Day Δ	Day % Δ	PBV(X)	PE(X)		DY%	Mn KD	MTD(%)	YTD (%)			Value (Mn KD)	(Mn Shrs)
Automated Systems	0.070	0.004	6.08%	0.55	(67.70)	5.7%	7	2%	-1%	0.00	0.06	-0.8%	-0.7%	0.086	0.051
Total Technology - 1 Companies				0.55	(67.70)	5.7%	7			0.00	0.06	-0.81%	-0.73%		

Telecom	Price			Valuation Multiples			MKT Cap	Price Performance		Trading Indicators		ROE	ROA	52 Week (KD)	
	Company	Close (KD)	Day Δ	Day % Δ	PBV(X)	PE(X)		DY%	Mn KD	MTD(%)	YTD (%)			Value (Mn KD)	(Mn Shrs)
Mobile Telecommunications	0.581	0.005	0.87%	1.94	11.59	5.4%	2,514	-1%	-3%	5.49	9.42	16.7%	4.6%	0.604	0.407
Kuwait Telecommunications	0.837	-0.007	-0.83%	1.94	9.59	4.2%	418	-1%	6%	0.02	0.03	20.2%	11.1%	0.870	0.680
National Mobile Telecommunications	0.608	0.003	0.50%	0.53	10.11	10.6%	305	5%	-27%	0.02	0.03	5.3%	2.4%	0.835	0.550
AAN Digital Services	0.012	0.000	-3.36%	0.34	37.51	0.0%	10	11%	-15%	0.19	16.82	0.9%	0.7%	0.021	0.009
Hayat Communications	0.065	0.000	-0.31%	0.55	27.45	0.0%	6	-21%	-14%	0.00	0.00	2.0%	0.8%	0.098	0.030
Telecom - 5 Companies				1.53	11.17	5.7%	3,252			5.72	26.29	13.70%	7.86%		

Utilities	Price			Valuation Multiples			MKT Cap	Price Performance		Trading Indicators		ROE	ROA	52 Week (KD)	
	Company	Close (KD)	Day Δ	Day % Δ	PBV(X)	PE(X)		DY%	Mn KD	MTD(%)	YTD (%)			Value (Mn KD)	(Mn Shrs)
Shamal Az-Zour Al-Oula Power & Water	0.334	0.001	0.30%	4.80	29.87	0.0%	367	4%	0%	2.93	8.78	16.1%	2.3%	0.500	0.297
Total Utilities - 1 Companies				4.80	29.87	0.0%	367			2.93	8.78	16.06%	2.26%		

Total Market 173 Companies				1.26	15.24	3.86%	31,566			72.31	445.63	8.26%	2.76%		
-----------------------------------	--	--	--	-------------	--------------	--------------	---------------	--	--	--------------	---------------	--------------	--------------	--	--

End of Report

The information contained in this document is proprietary to NIC and is for use only by the persons to whom it is issued. This document is confidential and may not be distributed either in part or in whole without the express agreement of NIC. It is intended solely for the use of the individual or entity to whom it is addressed and others authorized to receive it.



شركة الاستثمار الوطنية
NATIONAL INVESTMENTS COMPANY

Sharq, Al Mutanabi Street, Khaleejia Tower | P.O. Box 25667, Safat 13117, Kuwait

T.: +965 2226 6666 | Fax: +965 2226 6793 | www.nic.com.kw