



شركة الاستثمارات الوطنية
NATIONAL INVESTMENTS COMPANY

Bursa Kuwait – Daily Market Report
MENA Securities – Research & Studies Dep.

Wednesday, September 2, 2020

DAILY MARKET COVERAGE REPORT

NIC MENA SECURITIES - RESEARCH AND STUDIES DEP



Index	Close	DTD Chg Net	DTD (%)	YTD (%)	52W High	52W Low	MKT CAP Bn (KD)	PBV (X)	PE (X)	DY (%)
All Share Index	5,321.53	-5.34	-0.10%	-15.3%	6,416.43	4,339.58	30.69	1.19	14.89	3.97%
Premier Index	5,874.29	-14.78	-0.25%	-15.8%	7,172.32	4,498.65	22.73	1.64	13.74	3.68%
Main Index	4,227.69	13.98	0.33%	-13.9%	4,932.47	3,965.63	7.95	0.66	19.55	4.80%

Index	Value Mn(KD)	Volume (Mn share)
All Share Index	35.38	386.81
Premier Index	20.47	51.34
Main Index	14.90	335.47

Market Breadth	UP	Down	No Chg
All Share Index	58	44	70
Premier Index	5	7	6
Main Index	53	37	64

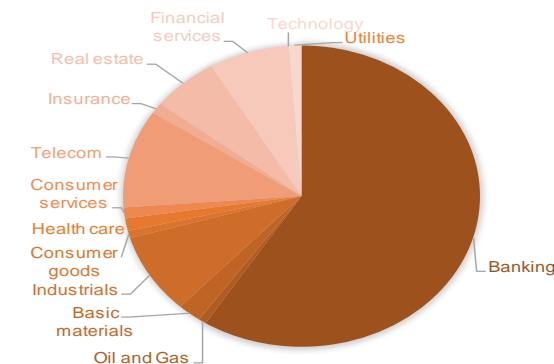
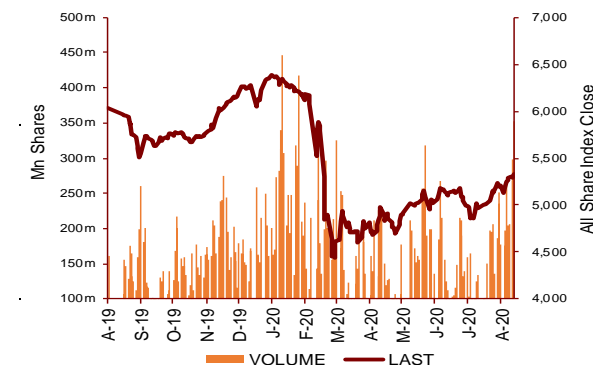
Today's Top 5 Gainer %	Close KD	Value KD	DTD (%)
UniCap Investment and Finance	0.045	105,648	12.75%
Inovest BSC Public	0.067	87,485	11.83%
Al Madina for Finance and Inve	0.012	140,955	7.21%
Aayan Leasing and Investment	0.069	2,084,652	6.98%
Kuwait Insurance	0.373	9,014	6.57%

Today's Top 5 Loser %	Close KD	Value KD	DTD (%)
Palms Agro Production	0.056	2,820	-7.50%
Munshaat Real Estate Proj	0.064	70,212	-7.14%
Tijara and Realestate Inves	0.040	180	-5.00%
Kuwait Finance and Investi	0.042	4,961	-4.94%
Al Argan International Real	0.083	416	-4.92%

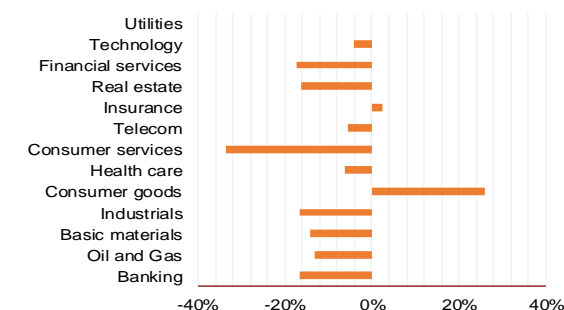
Today's Top 5 by Value	Close KD	DTD Chg	Trade Val Mn(KD)
Mobile Telecommunications	0.580	-1.69%	6.33
Ahli United Bank BSC	0.232	-0.85%	3.21
National Bank of Kuwait	0.866	0.12%	2.30
Kuwait Finance House	0.630	-0.16%	2.17
Aayan Leasing and Investment	0.069	6.98%	2.08

Top 5 by Volume	Close KD	DTD Chg	Trade Vol Mn(Shrs)
Gulf Petroleum Investment	0.022	4.33%	69.72
Al Salam Group Holding	0.024	-1.61%	31.60
Arzan Financial Group for f	0.063	2.61%	30.81
Aayan Leasing and Investrn	0.069	6.98%	30.55
AAN Digital Services	0.011	0.93%	25.05

Sector	Close	DTD Chg Net	DTD (%)	YTD (%)	52W High	52W Low	MKT CAP Bn (KD)	PBV (X)	PE (X)	DY (%)
Banking	1,238.82	-1.240	-0.10%	-16.4%	1,536.8	986.4	18.12	1.53	15.10	3.5%
Oil and Gas	1,076.54	1.800	0.17%	-13.1%	1,372.2	985.7	0.22	0.78	25.20	5.6%
Basic materials	783.87	0.020	0.00%	-14.1%	1,029.5	561.7	0.66	0.95	14.41	7.7%
Industrials	774.05	3.220	0.42%	-16.5%	937.5	602.9	2.64	0.84	12.59	5.3%
Consumer goods	803.17	-2.420	-0.30%	26.1%	810.7	548.6	0.24	1.59	97.34	2.1%
Health care	829.21	0.000	0.00%	-6.3%	921.9	815.0	0.41	4.19	48.62	1.0%
Consumer services	712.93	-8.830	-1.22%	-33.5%	1,083.1	674.8	0.36	0.82	34.24	4.9%
Telecom	1,056.73	-12.460	-1.17%	-5.4%	1,116.7	802.2	3.24	1.52	11.12	5.7%
Insurance	978.43	13.510	1.40%	2.6%	988.8	901.0	0.35	0.74	8.30	6.0%
Real estate	886.59	1.270	0.14%	-16.3%	1,083.4	763.2	1.86	0.61	21.76	2.6%
Financial services	895.72	5.010	0.56%	-17.2%	1,097.0	801.4	2.24	0.65	15.43	4.7%
Technology	493.24	21.090	4.47%	-4.2%	625.7	371.0	0.01	0.53	-65.76	5.9%
Utilities	842.11	-2.630	-0.31%	0.0%	1,042.1	781.6	0.35	4.59	28.62	0.0%
							30.69	1.19	14.89	3.97%



YTD Sector Performance %



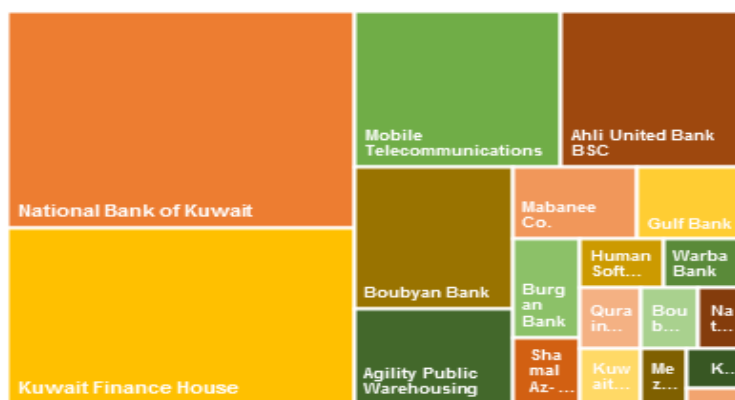
DAILY MARKET COVERAGE REPORT

NIC MENA SECURITIES - RESEARCH AND STUDIES DEP

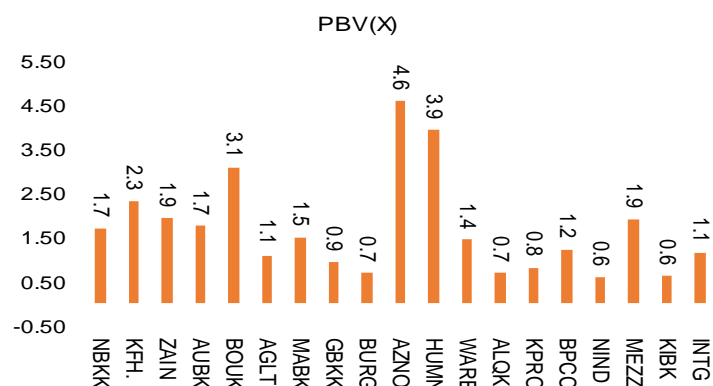


Premier Market	Price			Valuation Multiples			MKT Cap	Price Performance		Trading Indicators		ROE	ROA	52 Week (KD)	
	Close (KD)	Day Δ	Day % Δ	PBV(X)	PE(X)	DY%	Mn KD	MTD(%)	YTD (%)	Value (Mn KD)	(Mn Shrs)	(%)	(%)	High	Low
National Bank of Kuwait	0.866	0.001	0.12%	1.71	14.66	3.6%	5,881	1%	-15%	2.30	2.66	11.7%	1.4%	1.062	0.654
Kuwait Finance House	0.630	-0.001	-0.16%	2.32	19.05	2.6%	4,781	0%	-15%	2.17	3.44	12.2%	1.3%	0.761	0.473
Mobile Telecommunications	0.580	-0.010	-1.69%	1.93	11.57	5.4%	2,510	-2%	-3%	6.33	10.87	16.7%	4.6%	0.604	0.407
Ahli United Bank BSC	0.232	-0.002	-0.85%	1.75	10.22	5.2%	2,239	0%	-20%	3.21	13.78	17.1%	1.8%	0.311	0.160
Boubyan Bank	0.583	0.000	0.00%	3.07	28.18	1.1%	1,765	1%	-5%	0.23	0.39	10.9%	1.2%	0.638	0.380
Agility Public Warehousing	0.626	-0.001	-0.16%	1.09	13.81	2.9%	1,198	0%	-12%	0.35	0.56	7.9%	4.2%	0.748	0.357
Mabane Co.	0.642	-0.002	-0.31%	1.50	12.58	1.6%	709	1%	-25%	0.36	0.56	11.9%	5.8%	0.877	0.434
Gulf Bank	0.214	0.000	0.00%	0.94	9.77	4.7%	622	0%	-29%	1.43	6.69	9.6%	1.0%	0.317	0.180
Burgan Bank	0.199	0.000	0.00%	0.69	6.16	5.7%	521	0%	-35%	0.17	0.88	11.3%	1.2%	0.347	0.175
Shamal Az-Zour Al-Oula Power & Water	0.320	-0.001	-0.31%	4.59	28.62	0.0%	352	0%	0%	1.57	4.89	16.1%	2.3%	0.500	0.297
Human Soft Holding	2.602	0.081	3.21%	3.94	8.82	7.1%	317	3%	-14%	1.07	0.42	44.6%	30.3%	3.470	1.944
Warba Bank	0.200	0.001	0.50%	1.44	19.05	0.0%	315	1%	-24%	0.49	2.45	7.6%	0.5%	0.279	0.164
Qurain Petrochemical Industries	0.286	0.001	0.35%	0.69	10.35	5.4%	292	0%	-8%	0.07	0.26	6.7%	3.6%	0.341	0.163
Kuwait Projects Company Holding	0.152	0.000	0.00%	0.81	9.18	6.1%	275	3%	-29%	0.19	1.26	8.9%	0.3%	0.231	0.147
Boubyan Petrochemical	0.540	-0.002	-0.37%	1.22	23.04	9.6%	272	0%	-19%	0.07	0.13	5.3%	2.1%	0.800	0.395
National Industries Group Holding	0.159	0.000	0.00%	0.60	4.90	6.8%	227	1%	-34%	0.11	0.67	12.3%	3.7%	0.247	0.121
Mezzan Holding	0.659	-0.001	-0.15%	1.90	35.61	2.5%	201	1%	32%	0.12	0.18	5.3%	2.2%	0.665	0.428
Kuwait International Bank	0.173	0.000	0.00%	0.63	10.29	5.8%	176	1%	-34%	0.20	1.13	6.1%	0.6%	0.270	0.162
Integrated Holding	0.353	0.001	0.28%	1.13	9.83	11.3%	78	1%	-36%	0.04	0.12	11.5%	8.5%	0.600	0.342
Total				1.64	13.74	3.68%	22,732			20.47	51.34	11.96%	1.55%		

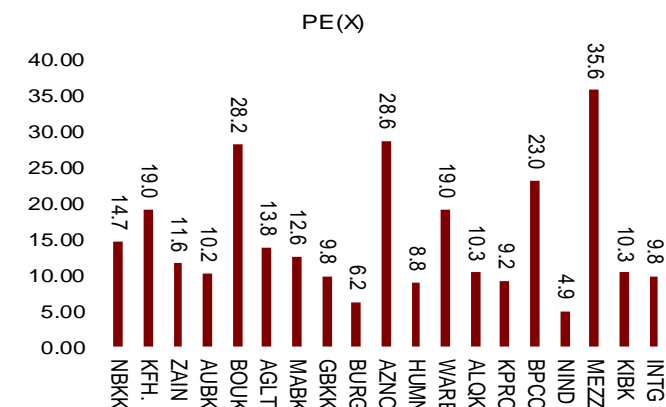
Market Capitalization



Price to Book Value



Price to Earning Value

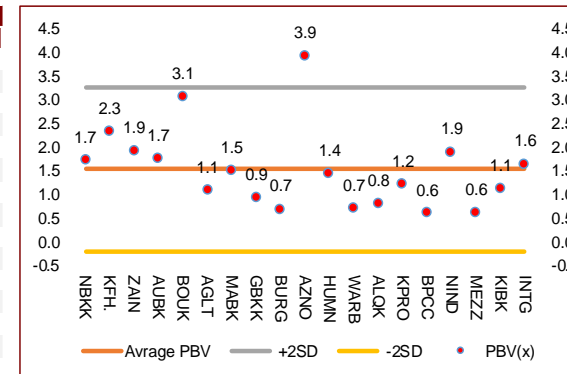


DAILY MARKET COVERAGE REPORT

NIC MENA SECURITIES - RESEARCH AND STUDIES DEP



Premier Market Company	Price			Valuation Multiples			MKT Cap Mn KD	Price Performance		ROE (%)	ROA (%)
	Close (KD)	Day Δ	Day % Δ	PBV(X)	PE (X)	DY%		MTD(%)	YTD (%)		
National Bank of Kuwait	0.866	0.001	0.12%	1.71	14.7	3.6%	5,881	1%	-15%	11.7%	1.4%
Kuwait Finance House	0.630	-0.001	-0.16%	2.32	19.0	2.6%	4,781	0%	-15%	12.2%	1.3%
Mobile Telecommunications	0.580	-0.010	-1.69%	1.93	11.6	5.4%	2,510	-2%	-3%	16.7%	4.6%
Ahli United Bank BSC	0.232	-0.002	-0.85%	1.75	10.2	5.2%	2,239	0%	-20%	17.1%	1.8%
Boubyan Bank	0.583	0.000	0.00%	3.07	28.2	1.1%	1,765	1%	-5%	10.9%	1.2%
Agility Public Warehousing	0.626	-0.001	-0.16%	1.09	13.8	2.9%	1,198	0%	-12%	7.9%	4.2%
Mabane Co.	0.642	-0.002	-0.31%	1.50	12.6	1.6%	709	1%	-25%	11.9%	5.8%
Gulf Bank	0.214	0.000	0.00%	0.94	9.8	4.7%	622	0%	-29%	9.6%	1.0%
Burgan Bank	0.199	0.000	0.00%	0.69	6.2	5.7%	521	0%	-35%	11.3%	1.2%
Shamal Az-Zour Al-Oula Power & Water	0.320	-0.001	-0.31%	4.59	28.6	0.0%	352	0%	0%	16.1%	2.3%
Human Soft Holding	2.602	0.081	3.21%	3.94	8.8	7.1%	317	3%	-14%	44.6%	30.3%
Warba Bank	0.200	0.001	0.50%	1.44	19.0	0.0%	315	1%	-24%	7.6%	0.5%
Qurain Petrochemical Industries	0.286	0.001	0.35%	0.69	10.3	5.4%	292	0%	-8%	6.7%	3.6%
Kuwait Projects Company Holding	0.152	0.000	0.00%	0.81	9.2	6.1%	275	3%	-29%	8.9%	0.3%
Boubyan Petrochemical	0.540	-0.002	-0.37%	1.22	23.0	9.6%	272	0%	-19%	5.3%	2.1%
National Industries Group Holding	0.159	0.000	0.00%	0.60	4.9	6.8%	227	1%	-34%	12.3%	3.7%
Mezzan Holding	0.659	-0.001	-0.15%	1.90	35.6	2.5%	201	1%	32%	5.3%	2.2%
Kuwait International Bank	0.173	0.000	0.00%	0.63	10.3	5.8%	176	1%	-34%	6.1%	0.6%
Integrated Holding	0.353	0.001	0.28%	1.13	9.8	11.3%	78	1%	-36%	11.5%	8.5%
Total				1.64	13.74	3.68%	22,732			11.96%	1.55%



Premier Market Discription	Price			Moving Average		RSI 14 Day	MKT Cap Mn KD	Price Performance		52 Week (KD)	
	Close (KD)	Day Δ	Day % Δ	50 Day	200 Day			MTD(%)	YTD (%)	High	Low
Premier Index	5,874	-14.780	-0.25%	5,586	5,921	71	22,732	0.048	-15.76%	7,172	4,499

Top 5 Performrs (Today's Price Change)

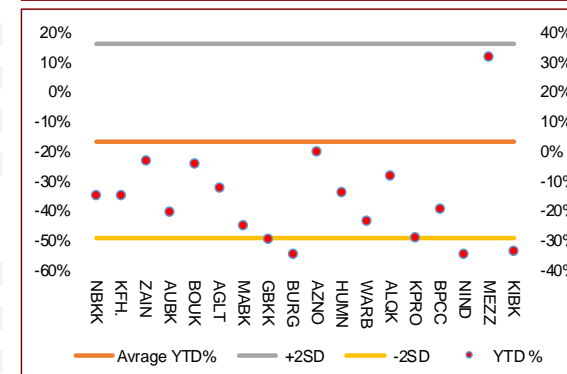
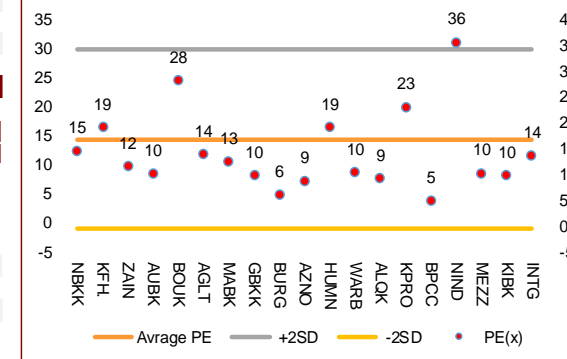
Human Soft Holding	2.602	0.081	3.21%	2.680	2.836	54	317	3%	-14%	3.470	1.944
Warba Bank	0.200	0.001	0.50%	0.201	0.223	53	315	1%	-24%	0.279	0.164
Qurain Petrochemical Industries	0.286	0.001	0.35%	0.283	0.270	55	292	0%	-8%	0.341	0.163
Integrated Holding	0.353	0.001	0.28%	0.390	0.459	24	78	1%	-36%	0.600	0.342
National Bank of Kuwait	0.866	0.001	0.12%	0.811	0.855	74	5,881	1%	-15%	1.062	0.654

Middel Performrs (Today's Price Change)

Boubyan Bank	0.583	0.000	0.00%	0.536	0.538	75	1,765	1%	-5%	0.638	0.380
Gulf Bank	0.214	0.000	0.00%	0.207	0.243	66	622	0%	-29%	0.317	0.180
Burgan Bank	0.199	0.000	0.00%	0.192	0.241	71	521	0%	-35%	0.347	0.175
Kuwait Projects Company Holding	0.152	0.000	0.00%	0.157	0.184	47	275	3%	-29%	0.231	0.147
National Industries Group Holding	0.159	0.000	0.00%	0.161	0.191	48	227	1%	-34%	0.247	0.121
Kuwait International Bank	0.173	0.000	0.00%	0.172	0.212	67	176	1%	-34%	0.270	0.162
Mezzan Holding	0.659	-0.001	-0.15%	0.600	0.549	64	201	1%	32%	0.665	0.428
Kuwait Finance House	0.630	-0.001	-0.16%	0.603	0.637	68	4,781	0%	-15%	0.761	0.473
Agility Public Warehousing	0.626	-0.001	-0.16%	0.635	0.614	39	1,198	0%	-12%	0.748	0.357

Bottom 5 Performrs (Today's Price Change)

Mobile Telecommunications	0.580	-0.010	-1.69%	0.562	0.547	80	2,510	-2%	-3%	0.604	0.407
Ahli United Bank BSC	0.232	-0.002	-0.85%	0.194	0.229	81	2,239	0%	-20%	0.311	0.160
Boubyan Petrochemical	0.540	-0.002	-0.37%	0.578	0.594	43	272	0%	-19%	0.800	0.395
Shamal Az-Zour Al-Oula Power & Water	0.320	-0.001	-0.31%	0.073	0.018	23	352	0%	0%	0.500	0.297
Mabane Co.	0.642	-0.002	-0.31%	0.641	0.691	51	709	1%	-25%	0.877	0.434



DAILY MARKET COVERAGE REPORT

NIC MENA SECURITIES - RESEARCH AND STUDIES DEP



Banking Sector	Price			Valuation Multiples			MKT Cap	Price Performance		Trading Indicators		ROE	ROA	52 Week (KD)	
	Company	Close (KD)	Day Δ	Day % Δ	PBV(X)	PE(X)		DY%	Mn KD	MTD(%)	YTD (%)			Value (Mn KD)	(Mn Shrs)
National Bank of Kuwait	0.866	0.001	0.12%	1.71	14.66	3.6%	5,881	1%	-15%	2.30	2.66	11.7%	1.4%	1.062	0.654
Kuwait Finance House	0.630	-0.001	-0.16%	2.32	19.05	2.6%	4,781	0%	-15%	2.17	3.44	12.2%	1.3%	0.761	0.473
Ahli United Bank BSC	0.232	-0.002	-0.85%	1.75	10.22	5.2%	2,239	0%	-20%	3.21	13.78	17.1%	1.8%	0.311	0.160
Boubyan Bank	0.583	0.000	0.00%	3.07	28.18	1.1%	1,765	1%	-5%	0.23	0.39	10.9%	1.2%	0.638	0.380
Commercial Bank of Kuwait	0.500	0.000	0.00%	1.32	0.00	3.7%	965	0%	-5%	0.50	1.00	0.0%	0.0%	0.555	0.465
Gulf Bank	0.214	0.000	0.00%	0.94	9.77	4.7%	622	0%	-29%	1.43	6.69	9.6%	1.0%	0.317	0.180
Burgan Bank	0.199	0.000	0.00%	0.69	6.16	5.7%	521	0%	-35%	0.17	0.88	11.3%	1.2%	0.347	0.175
Ahli United Bank	0.262	0.001	0.38%	1.12	9.29	5.2%	511	1%	-20%	0.10	0.39	12.1%	1.3%	0.330	0.225
Warba Bank	0.200	0.001	0.50%	1.44	19.05	0.0%	315	1%	-24%	0.49	2.45	7.6%	0.5%	0.279	0.164
Al Ahli Bank of Kuwait	0.171	-0.001	-0.58%	0.49	9.58	8.2%	275	0%	-33%	0.02	0.11	5.1%	0.6%	0.320	0.156
Kuwait International Bank	0.173	0.000	0.00%	0.63	10.29	5.8%	176	1%	-34%	0.20	1.13	6.1%	0.6%	0.270	0.162
Ithmaar Holding	0.022	0.000	0.00%	0.08	323.35	0.0%	65	0%	0%	0.00	0.00	0.0%	0.0%	0.022	0.022
Total Banking Sector - 12 Companies				1.53	15.10	3.5%	18,117			10.82	32.93	10.13%	1.18%		

Basic materials	Price			Valuation Multiples			MKT Cap	Price Performance		Trading Indicators		ROE	ROA	52 Week (KD)	
	Company	Close (KD)	Day Δ	Day % Δ	PBV(X)	PE(X)		DY%	Mn KD	MTD(%)	YTD (%)			Value (Mn KD)	(Mn Shrs)
Boubyan Petrochemical	0.540	-0.002	-0.37%	1.22	23.04	9.6%	272	0%	-19%	0.07	0.13	5.3%	2.1%	0.800	0.395
Qurain Petrochemical Industries	0.286	0.001	0.35%	0.69	10.35	5.4%	292	0%	-8%	0.07	0.26	6.7%	3.6%	0.341	0.163
Al Kout Industrial Projects	0.769	0.000	0.00%	2.50	16.21	6.5%	78	0%	-10%	0.00	0.00	15.4%	11.3%	0.850	0.769
Kuwait Foundry	0.235	0.000	0.00%	0.79	18.99	22.7%	17	-2%	-30%	0.02	0.11	4.1%	3.8%	0.564	0.192
Total Basic materials - 4 Companies				0.95	14.41	7.7%	659			0.17	0.49	6.57%	5.07%		

Consumer goods	Price			Valuation Multiples			MKT Cap	Price Performance		Trading Indicators		ROE	ROA	52 Week (KD)	
	Company	Close (KD)	Day Δ	Day % Δ	PBV(X)	PE(X)		DY%	Mn KD	MTD(%)	YTD (%)			Value (Mn KD)	(Mn Shrs)
Mezzan Holding	0.659	-0.001	-0.15%	1.90	35.61	2.5%	201	1%	32%	0.12	0.18	5.3%	2.2%	0.665	0.428
Livestock Transport and Trading	0.183	-0.002	-1.08%	0.95	32.62	0.1%	38	-1%	5%	0.03	0.16	2.9%	2.0%	0.200	0.152
Danah Al Safat Foodstuff	0.012	0.000	0.00%	0.25	(0.30)	0.1%	1	0%	-25%	0.00	0.00	-84.8%	-43.2%	0.029	0.010
Total Basic materials - 3 Companies				1.59	97.34	2.1%	240			0.15	0.34	1.64%	0.90%		

DAILY MARKET COVERAGE REPORT

NIC MENA SECURITIES - RESEARCH AND STUDIES DEP



Consumer services		Price			Valuation Multiples			MKT Cap	Price Performance		Trading Indicators		ROE	ROA	52 Week (KD)	
Company	Close (KD)	Day Δ	Day % Δ	PBV(X)	PE(X)	DY%	Mn KD	MTD(%)	YTD (%)	Value (Mn KD)	(Mn Shrs)	(%)	(%)	High	Low	
Jazeera Airways	0.569	-0.006	-1.04%	2.83	7.62	6.2%	114	1%	-48%	0.16	0.28	37.1%	9.0%	1.110	0.372	
Kuwait National Cinema	0.646	-0.024	-3.58%	0.74	6.99	7.5%	60	-4%	-38%	0.01	0.01	10.6%	7.2%	1.050	0.600	
Al Soor Fuel Marketing	0.108	-0.002	-1.82%	0.67	12.64	4.6%	44	-2%	-14%	0.00	0.01	5.3%	3.7%	0.129	0.096	
Oula Fuel Marketing	0.108	-0.001	-0.92%	0.65	11.30	5.5%	44	-3%	-15%	0.00	0.01	5.7%	3.2%	0.134	0.095	
Sultan Center Food Products	0.055	0.001	0.92%	0.68	13.84	0.0%	31	0%	6%	0.01	0.14	4.9%	0.7%	0.060	0.036	
IFA Hotels and Resorts	0.025	0.000	1.63%	0.90	(0.68)	0.0%	15	0%	-55%	0.01	0.22	-131.5%	-8.1%	0.062	0.021	
Jiyad Holding	0.035	-0.001	-2.50%	0.31	7.00	0.0%	12	7%	-10%	0.05	1.43	4.5%	2.8%	0.047	0.029	
Kuwait Resorts	0.046	0.001	1.99%	0.32	8.39	0.0%	9	1%	-20%	0.01	0.31	3.8%	3.2%	0.060	0.038	
Future Kid Entertainment and Real Estate	0.077	0.000	0.00%	0.44	28.90	15.1%	8	0%	-13%	0.00	0.00	1.5%	0.9%	0.110	0.069	
Al Eid Food	0.067	0.000	0.00%	0.37	4.43	0.0%	7	0%	-16%	0.00	0.00	8.4%	6.1%	0.096	0.046	
Alrai Media Group	0.037	0.000	0.00%	0.83	(2.41)	0.0%	9	0%	-2%	0.00	0.00	-34.2%	-20.0%	0.049	0.030	
Kuwait Hotels	0.088	0.000	0.00%	1.23	(5.05)	0.0%	5	0%	-12%	0.00	0.00	-24.4%	-13.2%	0.101	0.069	
Palms Agro Production	0.056	-0.005	-7.50%	0.47	(39.12)	17.9%	3	-2%	38%	0.00	0.05	-1.2%	-0.9%	0.060	0.025	
Kuwait Cable Vision	0.014	0.000	0.00%	0.52	(11.65)	0.0%	1	0%	0%	0.00	0.00	-4.5%	-3.0%	0.026	0.012	
Total Consumer services - 14 Companies				0.82	34.24	4.9%	361			0.25	2.46	2.38%	2.72%			

Financial services		Price			Valuation Multiples			MKT Cap	Price Performance		Trading Indicators		ROE	ROA	52 Week (KD)	
Company	Close (KD)	Day Δ	Day % Δ	PBV(X)	PE(X)	DY%	Mn KD	MTD(%)	YTD (%)	Value (Mn KD)	(Mn Shrs)	(%)	(%)	High	Low	
Egypt Kuwait Holding	0.374	0.000	0.00%	2.22	12.63	5.2%	383	0%	-17%	0.00	0.00	17.6%	7.1%	0.500	0.318	
Kuwait Projects Company Holding	0.152	0.000	0.00%	0.81	9.18	6.1%	275	3%	-29%	0.19	1.26	8.9%	0.3%	0.231	0.147	
National Industries Group Holding	0.159	0.000	0.00%	0.60	4.90	6.8%	227	1%	-34%	0.11	0.67	12.3%	3.7%	0.247	0.121	
GFH Financial Group	0.053	0.001	1.54%	0.57	7.18	5.4%	178	4%	-24%	0.07	1.38	8.0%	1.3%	0.075	0.042	
Alimtiiaz Investment Group	0.089	0.003	2.89%	0.42	4.64	8.9%	91	4%	-30%	0.54	6.12	9.1%	5.2%	0.137	0.071	
Commercial Facilities	0.182	0.000	0.00%	0.56	7.01	9.2%	92	-1%	-16%	0.00	0.00	8.0%	4.2%	0.235	0.179	
National Investments	0.121	0.001	0.83%	0.53	9.00	6.7%	97	2%	-12%	0.33	2.72	5.9%	5.0%	0.155	0.080	
Tamdeen Investment	0.255	0.000	0.00%	0.31	10.58	4.7%	87	2%	-26%	0.00	0.00	3.0%	2.2%	0.400	0.199	
Kuwait Investment	0.117	0.001	0.86%	0.51	3.66	8.6%	64	4%	-22%	0.05	0.46	13.9%	6.0%	0.172	0.095	
Noor Financial Investment	0.166	-0.004	-2.35%	1.01	8.12	3.0%	66	2%	39%	0.09	0.55	12.5%	7.5%	0.184	0.076	
Al Bareeq Holding	0.105	0.000	0.00%	1.10	20.97	0.0%	46	0%	5%	0.00	0.00	5.2%	5.0%	0.110	0.100	

DAILY MARKET COVERAGE REPORT

NIC MENA SECURITIES - RESEARCH AND STUDIES DEP



Financial services	Price			Valuation Multiples			MKT Cap	Price Performance		Trading Indicators		ROE	ROA	52 Week (KD)		
	Company	Close (KD)	Day Δ	Day % Δ	PBV(X)	PE(X)	DY%	Mn KD	MTD(%)	YTD (%)	Value (Mn KD)	(Mn Shrs)	(%)	(%)	High	Low
Kuwait Financial Centre	0.081	0.001	1.25%	0.41	5.57	6.1%	39	0%	-24%	0.09	1.12	7.3%	3.5%	0.121	0.070	
Aayan Leasing and Investment	0.069	0.005	6.98%	0.81	(3.78)	2.6%	55	17%	48%	2.08	30.55	-21.4%	-4.9%	0.066	0.032	
Arabi Group Holdings	0.198	0.000	0.00%	1.07	(19.90)	0.0%	33	0%	-28%	0.00	0.00	-5.4%	-0.6%	0.337	0.076	
Arzan Financial Group for Financing and Invest	0.063	0.002	2.61%	0.51	45.73	0.0%	50	8%	166%	1.93	30.81	1.1%	0.7%	0.061	0.022	
Privatization Holding	0.042	0.000	0.00%	0.31	(37.78)	0.0%	26	0%	-15%	0.01	0.23	-0.8%	-0.5%	0.059	0.037	
Asiya Capital Investments	0.031	-0.001	-1.88%	0.34	16.18	0.2%	24	1%	-23%	0.00	0.15	2.1%	2.0%	0.041	0.029	
KAMCO Investment	0.071	-0.001	-1.39%	0.43	8.04	0.0%	24	1%	-22%	0.04	0.50	5.4%	2.3%	0.111	0.060	
Kuwait and Middle East Financial Investment	0.117	0.000	0.00%	1.90	46.73	0.0%	31	2%	31%	0.14	1.24	4.1%	3.2%	0.123	0.060	
Umm Al Qaiwain General Investment Co	0.094	0.000	0.00%	0.63	17.67	3.9%	34	6%	41%	0.00	0.00	3.6%	3.3%	0.089	0.052	
Securities House	0.043	0.000	0.23%	0.58	(62.43)	0.0%	24	6%	-6%	0.34	7.84	-0.9%	-0.7%	0.050	0.027	
Gulf Investment House	0.098	0.001	0.52%	1.10	180.35	0.0%	40	5%	51%	0.62	6.31	0.6%	0.5%	0.097	0.038	
Coast Investment and Development	0.037	0.000	-0.54%	0.39	36.37	0.0%	21	7%	-9%	0.05	1.33	1.1%	1.0%	0.045	0.026	
Bayan Investment	0.048	0.000	0.00%	0.48	(24.55)	0.0%	17	-1%	25%	0.00	0.00	-1.9%	-0.8%	0.053	0.031	
First Investment	0.030	0.000	-1.01%	0.46	(0.40)	0.0%	19	-2%	-14%	0.15	4.94	-113.6%	-62.0%	0.045	0.022	
Al Madar Finance and Investment	0.088	-0.001	-1.13%	0.79	13.07	0.0%	18	3%	-6%	0.04	0.46	6.1%	5.0%	0.148	0.062	
Inovent BSC Public	0.067	0.007	11.83%	0.47	9.00	8.8%	20	19%	5%	0.09	1.36	5.2%	2.9%	0.070	0.044	
Al Manar Financing and Leasing	0.046	-0.001	-1.08%	0.42	11.86	1.1%	14	-1%	-11%	0.00	0.02	3.5%	2.7%	0.060	0.037	
Osoul Investment	0.080	-0.003	-3.03%	0.60	6.72	0.0%	12	-5%	7%	0.01	0.11	9.0%	8.2%	0.121	0.070	
National International Holding	0.061	0.001	1.67%	0.31	6.99	5.1%	12	0%	-17%	0.02	0.33	4.4%	3.3%	0.081	0.049	
Kuwait Finance and Investment	0.042	-0.002	-4.94%	0.33	18.99	0.0%	13	-6%	-15%	0.00	0.12	1.8%	1.2%	0.058	0.038	
Manazel Holding	0.033	0.000	0.92%	0.72	21.15	0.0%	14	0%	-16%	0.20	5.97	3.4%	0.8%	0.048	0.021	
Amar Finance and Leasing	0.053	0.001	1.94%	0.59	43.95	0.0%	10	2%	38%	0.00	0.00	1.3%	1.2%	0.064	0.037	
UniCap Investment and Finance	0.045	0.005	12.75%	0.46	(22.58)	0.0%	11	21%	-18%	0.11	2.42	-2.0%	-1.0%	0.057	0.035	
Gulf North Africa Holding	0.055	0.000	0.00%	0.74	71.38	0.0%	8	-1%	-11%	0.00	0.00	1.0%	0.6%	0.062	0.052	
International Financial Advisors	0.031	0.000	0.00%	0.93	(0.42)	2.1%	8	0%	-42%	0.00	0.00	-222.8%	-19.3%	0.060	0.027	
Kuwait Syrian Holding Co	0.027	0.001	1.89%	0.23	(13.79)	0.0%	5	2%	-14%	0.00	0.01	-1.7%	-1.1%	0.043	0.022	
Amwal International Investment	0.036	0.000	0.00%	0.67	13.34	0.0%	7	0%	20%	0.00	0.00	5.0%	2.6%	0.055	0.030	
Al Salam Group Holding	0.024	0.000	-1.61%	0.21	184.20	0.0%	7	5%	-17%	0.79	31.60	0.1%	0.1%	0.039	0.018	
Warba Capital Holding	0.048	0.000	0.00%	0.53	(7.55)	0.0%	5	-5%	-26%	0.00	0.00	-7.0%	-6.2%	0.115	0.045	
Credit Rating and Collection	0.035	0.000	0.00%	1.08	(23.69)	0.0%	6	0%	76%	0.00	0.00	-4.6%	-4.3%	0.037	0.019	
National Consumer Holding	0.052	0.000	0.00%	0.58	256.31	0.0%	5	-5%	-5%	0.00	0.00	0.2%	0.2%	0.100	0.010	
Al Madina for Finance and Investment	0.012	0.001	7.21%	0.40	(2.24)	0.0%	5	11%	-21%	0.14	12.10	-17.9%	-7.7%	0.019	0.009	
Ektitab Holding	0.013	0.000	3.10%	0.32	(9.36)	0.0%	4	4%	-11%	0.01	0.97	-3.4%	-3.0%	0.018	0.010	
Al Deera Holding	0.016	0.000	0.00%	0.70	(9.02)	0.0%	3	0%	-20%	0.00	0.00	-7.7%	-1.7%	0.022	0.011	
Al Mal Investment Company	0.009	0.000	0.00%	0.40	(0.85)	0.0%	3	1%	-8%	0.01	1.44	-47.6%	-23.3%	0.016	0.008	
Gulf Franchising Holding	0.058	0.000	0.00%	0.92	(2.53)	0.0%	2	0%	-22%	0.00	0.00	-36.2%	-10.8%	0.160	0.001	
Tamkeen Holding	0.005	0.000	0.00%	0.05	(7.18)	0.0%	0	0%	0%	0.00	0.00	-0.7%	-0.7%	0.005	0.005	
Total Financial services - 48 Companies				0.65	15.43	4.7%	2,236				8.27	155.06	4.18%	4.11%		

DAILY MARKET COVERAGE REPORT

NIC MENA SECURITIES - RESEARCH AND STUDIES DEP



Health care	Price			Valuation Multiples			MKT Cap	Price Performance		Trading Indicators		ROE	ROA	52 Week (KD)	
Company	Close (KD)	Day Δ	Day % Δ	PBV(X)	PE(X)	DY%	Mn KD	MTD(%)	YTD (%)	Value (Mn KD)	(Mn Shrs)	(%)	(%)	High	Low
Al-Maidan Clinic for Oral Health Services	1.220	0.000	0.00%	7.90	47.78	0.6%	305	0%	0%	0.00	0.00	16.5%	10.9%	1.240	1.220
Advanced Technology	0.627	0.000	0.00%	1.63	51.04	2.4%	94	0%	-23%	0.00	0.00	3.2%	0.7%	0.930	0.580
Yiaco Medical	0.707	0.000	0.00%	6.06	52.72	0.0%	12	0%	0%	0.00	0.00	11.5%	0.6%	0.707	0.707
Total Health care - 3 Companies				4.19	48.62	1.0%	411			0.00	0.00	8.61%	4.68%		

Industrials	Price			Valuation Multiples			MKT Cap	Price Performance		Trading Indicators		ROE	ROA	52 Week (KD)	
Company	Close (KD)	Day Δ	Day % Δ	PBV(X)	PE(X)	DY%	Mn KD	MTD(%)	YTD (%)	Value (Mn KD)	(Mn Shrs)	(%)	(%)	High	Low
Agility Public Warehousing	0.626	-0.001	-0.16%	1.09	13.81	2.9%	1,198	0%	-12%	0.35	0.56	7.9%	4.2%	0.748	0.357
Human Soft Holding	2.602	0.081	3.21%	3.94	8.82	7.1%	317	3%	-14%	1.07	0.42	44.6%	30.3%	3.470	1.944
ALAFCO Aviation Lease and Finance	0.161	0.000	0.00%	0.48	8.66	6.2%	153	3%	-40%	0.79	4.88	5.5%	1.4%	0.278	0.138
Kuwait Cement	0.177	0.000	0.00%	0.60	31.41	8.4%	126	2%	-28%	0.08	0.44	1.9%	1.3%	0.278	0.144
Gulf Cable and Electrical Industries	0.651	0.000	0.00%	0.78	32.29	4.2%	137	1%	33%	0.26	0.41	2.4%	2.2%	0.659	0.390
Integrated Holding	0.353	0.001	0.28%	1.13	9.83	11.3%	78	1%	-36%	0.04	0.12	11.5%	8.5%	0.600	0.342
Kuwait Portland Cement	0.735	0.000	0.00%	0.99	9.71	13.4%	74	1%	-25%	0.02	0.03	10.2%	8.2%	1.215	0.683
United Projects for Aviation Services	0.465	0.000	0.00%	0.98	7.96	4.5%	74	0%	-9%	0.00	0.00	12.3%	7.8%	0.512	0.367
Heavy Engineering Industries and Shipbuilding	0.369	0.001	0.27%	1.07	5.92	7.9%	67	1%	-9%	0.06	0.17	18.0%	5.9%	0.419	0.298
Educational Holding Group	0.299	0.000	0.00%	1.73	9.47	5.0%	73	0%	-32%	0.00	0.00	18.3%	16.7%	0.475	0.228
National Industries	0.159	0.000	0.00%	0.66	12.96	6.2%	56	-3%	-4%	0.00	0.00	5.1%	3.8%	0.180	0.143
ACICO Industries	0.099	0.001	0.71%	0.32	12.89	5.0%	33	5%	-26%	0.00	0.03	2.5%	0.6%	0.145	0.081
Kuwait Company for Process Plant Constructi	0.309	-0.001	-0.32%	1.22	6.62	5.8%	33	-1%	28%	0.02	0.05	18.5%	7.7%	0.337	0.173
Ras Al Khaimah for White Cement and Constr	0.065	0.000	0.00%	0.51	19.94	8.4%	33	0%	0%	0.00	0.00	2.6%	2.0%	0.080	0.053
Gulf Cement	0.033	0.002	5.77%	0.33	(12.04)	12.6%	27	10%	-40%	0.03	1.05	-2.7%	-2.2%	0.063	0.029
Combined Group Contracting	0.158	0.000	0.00%	0.55	7.12	13.0%	26	2%	-36%	0.10	0.65	7.7%	1.2%	0.251	0.138
Sharjah Cement and Industrial Development	0.042	0.000	0.00%	0.21	25.32	12.4%	26	0%	0%	0.00	0.00	0.8%	0.6%	0.067	0.042
KGL Logistics	0.025	0.000	0.40%	0.19	4.13	0.1%	19	2%	-32%	0.04	1.56	4.6%	2.9%	0.043	0.023
Fujairah Cement Industries	0.031	0.000	-0.64%	0.13	15.08	13.5%	11	-1%	-31%	0.01	0.37	0.8%	0.4%	0.053	0.029
Shuaiba Industrial	0.130	0.000	0.00%	0.72	40.15	7.6%	13	5%	-16%	0.00	0.00	1.8%	1.4%	0.180	0.122
Kuwait and Gulf Link Transport	0.046	0.002	4.31%	0.19	13.91	0.0%	13	2%	-31%	0.02	0.35	1.4%	0.4%	0.080	0.042
National Cleaning	0.053	0.001	0.95%	0.31	7.09	9.6%	11	2%	-23%	0.02	0.34	4.4%	1.5%	0.088	0.047
Mubarrad Holding	0.059	0.002	4.05%	0.47	9.53	7.9%	10	6%	-33%	0.21	3.53	4.9%	4.1%	0.089	0.049
Specialities Group Holding	0.066	-0.002	-2.22%	0.32	7.14	0.0%	9	0%	-21%	0.04	0.53	4.5%	3.5%	0.086	0.055
Hilal Cement	0.126	0.000	0.00%	1.10	(10.36)	11.9%	13	10%	26%	0.00	0.00	-10.6%	-6.2%	0.120	0.063
National Ranges	0.017	0.001	3.75%	0.30	(1.21)	0.0%	5	4%	66%	0.00	0.04	-24.9%	-5.3%	0.018	0.007
Metal and Recycling	0.041	0.000	0.00%	0.34	(1.72)	0.0%	4	-7%	-19%	0.00	0.00	-19.7%	-10.1%	0.070	0.020
Salbookh Trading	0.033	0.000	-0.60%	0.45	(1.92)	0.0%	3	20%	-34%	0.01	0.29	-23.2%	-15.9%	0.051	0.026
Equipment Holding	0.016	0.001	3.97%	0.31	(181.30)	0.0%	2	6%	-28%	0.01	0.86	-0.2%	-0.1%	0.024	0.013
Total Industrials - 29 Companies				0.84	12.59	5.3%	2,641			3.18	16.67	6.67%	5.05%		

DAILY MARKET COVERAGE REPORT

NIC MENA SECURITIES - RESEARCH AND STUDIES DEP



Insurance	Price			Valuation Multiples			MKT Cap	Price Performance		Trading Indicators		ROE	ROA	52 Week (KD)	
	Company	Close (KD)	Day Δ	Day % Δ	PBV(X)	PE(X)		DY%	Mn KD	MTD(%)	YTD (%)			Value (Mn KD)	(Mn Shrs)
Gulf Insurance Group	0.582	-0.018	-3.00%	1.00	8.12	6.4%	108	-5%	-12%	0.00	0.00	12.3%	1.7%	0.687	0.550
Al Ahleia Insurance	0.400	0.018	4.71%	0.76	8.06	8.4%	83	5%	-2%	0.01	0.01	9.4%	3.3%	0.424	0.367
Kuwait Insurance	0.373	0.023	6.57%	0.61	7.23	6.4%	69	7%	13%	0.01	0.03	8.5%	4.6%	0.387	0.300
Kuwait Reinsurance	0.200	0.000	0.00%	0.76	8.56	2.2%	40	3%	45%	0.00	0.00	8.9%	3.2%	0.195	0.126
Bahrain Kuwait Insurance	0.200	0.000	0.00%	0.93	12.87	6.1%	28	0%	0%	0.00	0.00	7.2%	1.1%	0.200	0.200
Warba Insurance	0.079	0.000	-0.13%	0.34	11.14	0.0%	13	0%	30%	0.00	0.01	3.1%	1.0%	0.094	0.051
First Takaful Insurance	0.040	0.000	-0.50%	0.48	5.04	0.0%	4	0%	4%	0.01	0.15	9.6%	5.9%	0.056	0.031
Wethaq Takaful Insurance	0.024	0.001	2.09%	0.22	(30.88)	0.0%	3	2%	-2%	0.02	0.71	-0.7%	-0.7%	0.035	0.018
Total Insurance - 8 Companies				0.74	8.30	6.0%	349			0.04	0.90	8.86%	3.00%		

Oil and Gas	Price			Valuation Multipels			MKT Cap	Price Performance		Trading Indicators		ROE	ROA	52 Week (KD)	
	Company	Close (KD)	Day Δ	Day % Δ	PBV(X)	PE(X)		DY%	Mn KD	MTD(%)	YTD (%)			Value (Mn KD)	(Mn Shrs)
Burgan for Well Drilling Trading and Maintenanc	0.071	-0.001	-0.84%	0.26	7.20	0.0%	16	3%	-12%	0.00	0.00	3.6%	1.1%	0.098	0.060
Energy House Holding	0.021	0.000	0.96%	0.65	(2.88)	0.0%	16	6%	-8%	0.01	0.34	-22.5%	-17.0%	0.036	0.014
Gulf Petroleum Investment	0.022	0.001	4.33%	0.24	(6.99)	0.0%	10	12%	8%	1.53	69.72	-3.4%	-2.3%	0.025	0.012
Independent Petroleum Group	0.430	0.000	0.00%	0.79	11.72	7.0%	78	-4%	-11%	0.00	0.00	6.8%	2.2%	0.497	0.375
National Petroleum Services	0.971	0.000	0.00%	2.31	8.28	7.2%	94	-3%	-17%	0.00	0.00	27.9%	23.6%	1.389	0.903
Senergy Holding	0.016	0.000	-1.82%	0.32	(0.68)	0.0%	3	0%	-26%	0.02	0.92	-47.9%	-30.4%	0.027	0.014
Total Oil and Gas - 6 Companies				0.78	25.20	5.6%	217			1.55	70.99	3.10%	2.18%		

Real estate	Price			Valuation Multiples			MKT Cap	Price Performance		Trading Indicators		ROE	ROA	52 Week (KD)	
	Company	Close (KD)	Day Δ	Day % Δ	PBV(X)	PE(X)		DY%	Mn KD	MTD(%)	YTD (%)			Value (Mn KD)	(Mn Shrs)
Mabane Co.	0.642	-0.002	-0.31%	1.50	12.58	1.6%	709	1%	-25%	0.36	0.56	11.9%	5.8%	0.877	0.434
Salhia Real Estate	0.399	0.005	1.27%	1.21	9.17	5.0%	197	1%	-4%	0.33	0.85	13.2%	5.8%	0.460	0.324
Commercial Real Estate	0.095	0.002	1.60%	0.58	11.77	6.0%	172	2%	4%	0.06	0.67	5.0%	2.7%	0.103	0.083
Tamdeen Real Estate	0.250	0.000	0.00%	0.36	12.20	4.0%	101	0%	-22%	0.00	0.00	3.0%	2.2%	0.343	0.248
National Real Estate	0.072	0.001	1.40%	0.38	9.06	0.0%	104	3%	-17%	0.03	0.41	4.2%	2.4%	0.095	0.060
Kuwait Real Estate	0.094	0.000	-0.11%	0.66	12.00	0.4%	85	1%	-10%	0.19	1.98	5.5%	2.2%	0.115	0.070
United Real Estate	0.050	0.000	0.00%	0.29	(7.44)	0.0%	54	0%	-18%	0.00	0.00	-3.9%	-1.2%	0.063	0.045
First Dubai for Real Estate Development	0.040	0.000	1.00%	0.54	44.30	1.0%	40	6%	13%	0.22	5.48	1.2%	1.0%	0.055	0.026

DAILY MARKET COVERAGE REPORT

NIC MENA SECURITIES - RESEARCH AND STUDIES DEP



Real estate Company	Price			Valuation Multiples			MKT Cap	Price Performance		Trading Indicators		ROE	ROA	52 Week (KD)	
	Close (KD)	Day Δ	Day % Δ	PBV(X)	PE(X)	DY%	Mn KD	MTD(%)	YTD (%)	Value (Mn KD)	(Mn Shrs)	(%)	(%)	High	Low
Al Mazaya Holding	0.053	0.002	3.14%	0.41	(3.76)	0.1%	33	3%	-11%	0.04	0.80	-11.0%	-3.8%	0.067	0.047
Dar Al Thuraya Real Estate	0.128	0.000	0.00%	1.22	33.74	0.0%	19	0%	83%	0.00	0.00	3.6%	3.6%	0.190	0.040
Injazzat Real Estate Development	0.078	0.004	5.80%	0.50	(3.76)	8.8%	26	6%	-2%	0.00	0.00	-13.4%	-7.0%	0.091	0.061
Ajial Real Estate Entertainment	0.132	0.000	0.00%	0.20	12.15	0.0%	24	0%	-23%	0.00	0.00	1.6%	1.4%	0.213	0.115
Arkan Al Kuwait Real Estate	0.081	-0.003	-2.99%	0.58	8.78	9.7%	20	-3%	-9%	0.00	0.01	6.6%	3.5%	0.100	0.076
Al Argan International Real Estate	0.083	-0.004	-4.92%	0.24	26.93	5.9%	21	-5%	-21%	0.00	0.01	0.9%	0.3%	0.141	0.060
Al-Enmaa Real Estate	0.048	0.001	1.93%	0.48	12.55	0.0%	21	9%	-24%	0.21	4.34	3.8%	2.4%	0.079	0.037
Aayan Real Estate	0.053	-0.002	-3.27%	0.31	10.41	9.0%	22	4%	-27%	0.01	0.26	3.0%	1.9%	0.080	0.048
Dalqan Real Estate	0.350	0.000	0.00%	2.91	59.01	0.0%	19	0%	0%	0.00	0.00	4.9%	4.9%	0.350	0.350
Kuwait Business Town Real Estate	0.024	0.000	-0.83%	0.22	6.08	0.3%	15	0%	-46%	0.05	1.93	3.6%	2.7%	0.046	0.022
Tijara and Realestate Investment	0.040	-0.002	-5.00%	0.37	10.50	4.9%	15	-5%	-20%	0.00	0.00	3.6%	1.9%	0.055	0.034
Munshaat Real Estate Projects	0.064	-0.005	-7.14%	0.43	23.48	3.3%	21	28%	-14%	0.07	1.16	1.8%	0.7%	0.085	0.045
Aqar Real Estate Investments	0.060	-0.002	-3.23%	0.43	5.01	8.3%	13	-8%	-25%	0.00	0.06	8.7%	7.3%	0.089	0.060
Sokouk Holding	0.028	0.000	0.36%	0.34	(4.66)	0.0%	16	20%	-21%	0.63	22.10	-7.4%	-4.7%	0.040	0.022
Al-Arabiya Real Estate	0.024	0.001	4.27%	0.21	7.40	2.5%	12	6%	-17%	0.01	0.48	2.9%	1.1%	0.033	0.020
Mashaer Holding	0.055	-0.003	-4.87%	0.42	5.89	0.0%	10	1%	-30%	0.02	0.40	7.1%	5.0%	0.086	0.048
Osos Holding Group	0.095	0.000	0.00%	0.76	7.17	10.0%	10	0%	-5%	0.00	0.01	10.5%	7.0%	0.118	0.084
Abyaar Real Estate Development	0.007	0.000	-2.74%	0.20	(0.50)	0.0%	8	-3%	-9%	0.08	10.80	-40.9%	-12.4%	0.015	0.005
Ream Real Estate	0.204	0.000	0.00%	1.56	(8.21)	1.1%	22	0%	132%	0.00	0.00	-19.0%	-10.1%	0.204	0.060
Investors Holding Group	0.014	0.000	1.44%	0.71	(0.67)	0.0%	9	5%	76%	0.03	2.32	-106.5%	-57.2%	0.017	0.007
Al Massaleh Real Estate	0.029	0.000	0.00%	0.33	(4.07)	0.0%	7	0%	-21%	0.00	0.00	-8.1%	-1.9%	0.040	0.026
Kuwait Real Estate Holding	0.025	0.000	0.81%	0.04	0.67	7.1%	5	-2%	-13%	0.00	0.08	5.5%	2.2%	0.034	0.023
Kuwait Remal Real Estate	0.019	0.000	0.00%	0.28	(2.54)	0.0%	6	28%	-24%	0.01	0.67	-11.0%	-3.9%	0.029	0.013
Real Estate Trade Centers	0.026	0.000	0.78%	0.14	148.55	0.0%	3	3%	12%	0.00	0.06	0.1%	0.1%	0.050	0.018
Taameer Real Estate Investment	0.020	0.001	5.73%	0.30	(4.29)	0.0%	5	8%	-23%	0.11	5.60	-7.0%	-4.5%	0.034	0.013
Al Masaken International Real Estate Developr	0.031	0.000	0.00%	0.35	37.93	0.5%	3	0%	-29%	0.00	0.00	0.9%	0.4%	0.074	0.027
Mena Real Estate	0.027	0.001	3.49%	0.18	(59.51)	0.0%	4	9%	-36%	0.13	4.86	-0.3%	-0.2%	0.043	0.021
Sanam Real Estate	0.030	0.000	0.00%	0.38	40.63	0.0%	4	0%	-25%	0.00	0.00	0.9%	0.9%	0.043	0.027
Ajwan Gulf Real Estate	0.011	0.000	0.00%	0.19	(7.68)	0.0%	2	0%	-29%	0.00	0.00	-2.5%	-2.2%	0.016	0.009
Effect Real Estate	0.021	0.000	0.00%	0.29	(8.85)	4.9%	2	0%	0%	0.00	0.00	-3.3%	-3.2%	0.021	0.021
Al Mudon International Real Estate	0.016	0.000	0.00%	0.12	(8.22)	0.0%	2	0%	-35%	0.00	0.00	-1.5%	-1.4%	0.029	0.015
Total Real estate - 39 Companies				0.61	21.76	2.6%	1,859			2.61	65.90	2.79%	2.96%		

DAILY MARKET COVERAGE REPORT

NIC MENA SECURITIES - RESEARCH AND STUDIES DEP



Technology	Price			Valuation Multiples			MKT Cap	Price Performance		Trading Indicators		ROE	ROA	52 Week (KD)	
	Company	Close (KD)	Day Δ	Day % Δ	PBV(X)	PE(X)		DY%	Mn KD	MTD(%)	YTD (%)			Value (Mn KD)	(Mn Shrs)
Automated Systems	0.068	0.003	4.47%	0.53	(65.76)	5.9%	7	-1%	-4%	0.00	0.04	-0.8%	-0.7%	0.086	0.051
Total Technology - 1 Companies				0.53	(65.76)	5.9%	7			0.00	0.04	-0.81%	-0.73%		

Telecom	Price			Valuation Multiples			MKT Cap	Price Performance		Trading Indicators		ROE	ROA	52 Week (KD)	
	Company	Close (KD)	Day Δ	Day % Δ	PBV(X)	PE(X)		DY%	Mn KD	MTD(%)	YTD (%)			Value (Mn KD)	(Mn Shrs)
Mobile Telecommunications	0.580	-0.010	-1.69%	1.93	11.57	5.4%	2,510	-2%	-3%	6.33	10.87	16.7%	4.6%	0.604	0.407
Kuwait Telecommunications	0.843	0.007	0.84%	1.95	9.65	4.2%	421	0%	7%	0.15	0.18	20.2%	11.1%	0.870	0.680
National Mobile Telecommunications	0.580	0.003	0.52%	0.51	9.65	11.1%	291	0%	-30%	0.02	0.04	5.3%	2.4%	0.835	0.550
AAN Digital Services	0.011	0.000	0.93%	0.32	35.23	0.0%	9	4%	-20%	0.27	25.05	0.9%	0.7%	0.021	0.009
Hayat Communications	0.082	0.000	0.00%	0.70	34.74	0.0%	7	0%	9%	0.00	0.00	2.0%	0.8%	0.098	0.030
Telecom - 5 Companies				1.52	11.12	5.7%	3,238			6.78	36.13	13.70%	7.86%		

Utilities	Price			Valuation Multiples			MKT Cap	Price Performance		Trading Indicators		ROE	ROA	52 Week (KD)	
	Company	Close (KD)	Day Δ	Day % Δ	PBV(X)	PE(X)		DY%	Mn KD	MTD(%)	YTD (%)			Value (Mn KD)	(Mn Shrs)
Shamal Az-Zour Al-Oula Power & Water	0.320	-0.001	-0.31%	4.59	28.62	0.0%	352	0%	0%	1.57	4.89	16.1%	2.3%	0.500	0.297
Total Utilities - 1 Companies				4.59	28.62	0.0%	352			1.57	4.89	16.06%	2.26%		

Total Market 173 Companies				1.19	14.89	3.97%	30,686			35.38	386.81	7.97%	2.77%		
-----------------------------------	--	--	--	-------------	--------------	--------------	---------------	--	--	--------------	---------------	--------------	--------------	--	--

End of Report

The information contained in this document is proprietary to NIC and is for use only by the persons to whom it is issued. This document is confidential and may not be distributed either in part or in whole without the express agreement of NIC. It is intended solely for the use of the individual or entity to whom it is addressed and others authorized to receive it.



شركة الاستثمار الوطنية
NATIONAL INVESTMENTS COMPANY

Sharq, Al Mutanabi Street, Khaleejia Tower | P.O. Box 25667, Safat 13117, Kuwait

T.: +965 2226 6666 | Fax: +965 2226 6793 | www.nic.com.kw