

**BOURSA KUWAIT**  
**DAILY MARKET COVERAGE REPORT**

**Monday, July 13, 2020**

**Kuwait Market Watch**

Monday, July 13, 2020

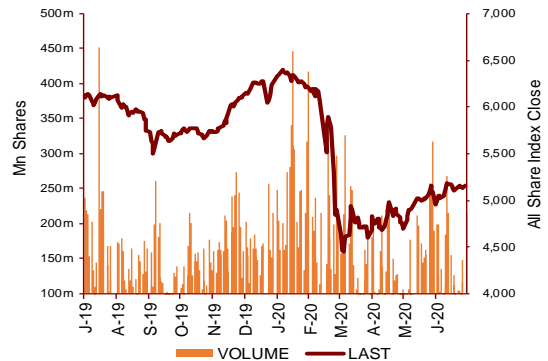
Index	Close	DTD Chg Net	DTD (%)	YTD (%)	52W High	52W Low	MKT CAP Bn (KD)	PBV (X)	PE (X)	DY (%)
All Share Index	5,176.9	21,240	0.41%	-17.5%	6,416.4	4,339.6	29.48	1.14	14.4	4.13%
Premier Index	5,661.0	24,680	0.44%	-18.7%	7,172.3	4,498.7	21.50	1.56	13.1	3.89%
Main Index	4,220.6	14,390	0.34%	-14.1%	4,932.5	3,965.6	7.98	0.66	19.6	4.78%

**Value And Volume**

Index	Value Mn(KD)	Vloume (Mn share)
All Share Index	41.19	212.33
Premier Index	33.50	104.88
Main Index	7.69	107.45

**Market Breadth**

	UP	Down	No Chg
All Share Index	61	40	73
Premier Index	10	4	4
Main Index	51	36	69



**Today's Top 5 Gainer %**

	Close KD	Value KD	DTD (%)
Future Kid Entertainment and Real	0.090	475	17.19%
Wethaq Takaful Insurance Co KC	0.025	20,065.9	9.21%
National Ranges Co KPSC	0.018	41,492	6.51%
Tamdeen Investment Co KSCP	0.249	5,405	5.96%
National Industries Company KP	0.160	480.00	5.26%

**Today's Top 5 Loser %**

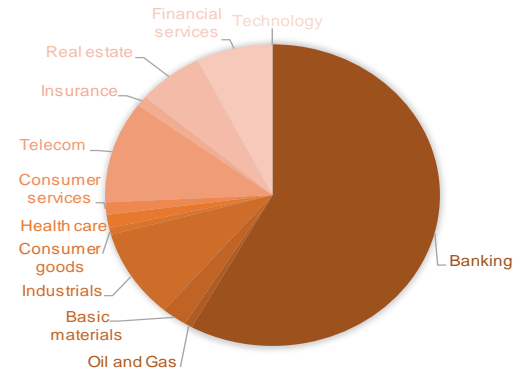
	Close KD	Value KD	DTD (%)
Ream Real Estate Com	0.067	518	-37.38%
Kuwait Syrian Holdin	0.037	27	-10.90%
Automated Systems Co	0.061	13,240	-9.71%
Energy House Holding	0.022	25,810	-8.09%
Mubarrad Holding Co	0.059	7,285	-5.95%

**Today's Top 5 by Value**

	Close KD	DTD Chg	Trade Val Mn(KD)
Ahli United Bank BSC	0.195	1.56%	10.31
Kuwait Finance House KSC	0.602	0.33%	5.21
Mobile Telecommunications Comp	0.563	0.00%	4.76
Agility Public Warehousing Co	0.788	0.64%	4.33
Gulf Bank KSCP	0.211	0.96%	1.86

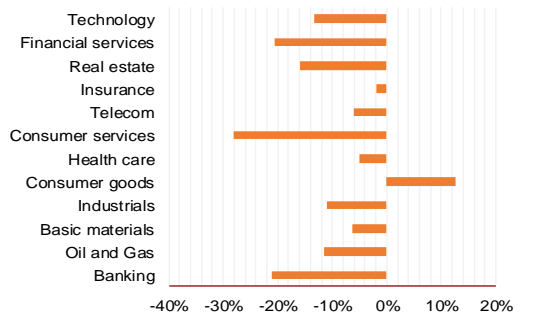
**Top 5 by Volume**

	Close KD	DTD Chg	Trade Vol Mn(Shrs)
Ahli United Bank BSC	0.195	1.56%	52.88
Arzan Financial Grou	0.043	3.86%	19.07
First Investment Co	0.026	-2.26%	9.66
Gulf Bank KSCP	0.211	0.96%	8.78
Kuwait Finance House	0.602	0.33%	8.68



Sector	Close	DTD Chg Net	DTD (%)	YTD (%)	52W High	52W Low	MKT CAP Bn (KD)	PBV (X)	PE (X)	DY (%)
Banking	1,169.1	7,290	0.63%	-21.2%	1,536.8	986.4	17.11	1.44	14.26	3.7%
Oil and Gas	1,097.3	-7,110	-0.64%	-11.4%	1,372.2	985.7	0.22	0.80	25.69	5.5%
Basic materials	850.3	4,470	0.53%	-6.4%	1,127.9	561.7	0.72	1.03	15.65	7.1%
Industrials	825.9	3,030	0.37%	-11.0%	958.5	602.9	2.82	0.90	13.45	4.9%
Consumer goods	716.8	0,380	0.05%	12.5%	806.3	548.6	0.21	1.42	86.87	2.4%
Health care	839.2	0,000	0.00%	-5.1%	952.1	815.0	0.42	4.24	49.21	1.0%
Consumer services	771.0	2,570	0.33%	-28.1%	1,083.1	674.8	0.39	0.88	37.08	4.5%
Telecom	1,050.6	2,480	0.24%	-5.9%	1,116.7	802.2	3.22	1.51	11.06	5.7%
Insurance	936.6	-14,080	-1.48%	-1.8%	988.8	901.0	0.33	0.70	7.85	6.3%
Real estate	887.8	-5,570	-0.62%	-16.0%	1,083.4	763.2	1.87	0.61	21.85	2.6%
Financial services	859.1	3,950	0.46%	-20.6%	1,097.0	801.4	2.18	0.63	15.02	4.8%
Technology	446.7	-48,010	-9.70%	-13.3%	625.7	371.0	0.01	0.48	(59.56)	6.5%
							29.48			

YTD Sector Performance %

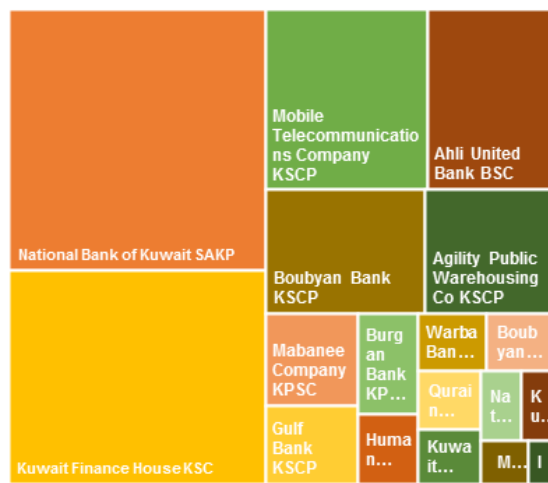


**Premier Market**

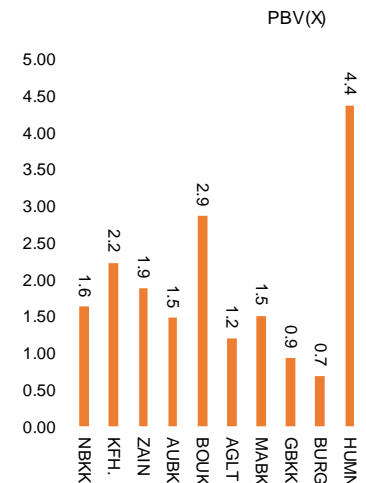
Monday, July 13, 2020

Company	Price			Valuation Multiples			MKT Cap Mn KD	Price Performance		Trading Indicators		ROE (%)	ROA (%)	52 Week (KD)	
	Close (KD)	Day Δ	Day % Δ	PBV(X)	PE(X)	DY%		MTD(%)	YTD (%)	Value (Mn KD)	(Mn Shrs)			High	Low
National Bank of Kuwait SAKP	0.819	0.004	0.49%	1.62	13.87	3.9%	5,564	0%	-20%	1.34	1.63	11.7%	1.4%	1.062	0.654
Kuwait Finance House KSC	0.602	0.002	0.33%	2.22	18.24	2.7%	4,578	-2%	-18%	5.21	8.68	12.2%	1.3%	0.761	0.473
Mobile Telecommunications Company KSCP	0.563	0.000	0.00%	1.88	11.23	5.5%	2,436	2%	-6%	4.76	8.43	16.7%	8.3%	0.604	0.407
Ahli United Bank BSC	0.195	0.003	1.56%	1.47	8.59	6.2%	1,882	11%	-33%	10.31	52.88	17.1%	1.8%	0.311	0.160
Boubyan Bank KSCP	0.543	0.006	1.12%	2.86	26.25	1.2%	1,644	2%	-11%	1.59	2.93	10.9%	1.2%	0.638	0.380
Agility Public Warehousing Co KSCP	0.788	0.005	0.64%	1.19	15.11	2.6%	1,311	7%	-4%	4.33	5.49	7.9%	6.5%	0.860	0.410
Mabane Company KPSC	0.644	-0.010	-1.53%	1.50	12.58	1.6%	709	-4%	-24%	0.67	1.03	11.9%	6.1%	0.877	0.434
Gulf Bank KSCP	0.211	0.002	0.96%	0.92	9.61	4.7%	612	0%	-30%	1.86	8.78	9.6%	1.0%	0.323	0.180
Burgan Bank KPSC	0.195	0.001	0.52%	0.68	6.03	5.9%	511	-1%	-36%	0.12	0.63	11.3%	1.2%	0.359	0.178
Human Soft Holding Company KSCP	2.886	-0.042	-1.43%	4.37	9.79	6.4%	351	4%	-4%	0.24	0.08	44.6%	33.0%	3.490	1.944
Warba Bank KSCP	0.206	0.000	0.00%	1.49	19.62	0.0%	324	0%	-21%	0.16	0.75	7.6%	0.5%	0.279	0.164
Kuwait Projects Company Holding KSCP	0.157	0.000	0.00%	0.84	9.48	5.9%	285	-10%	-27%	0.36	2.29	8.9%	4.0%	0.231	0.152
Boubyan Petrochemical Company KSCP	0.624	0.004	0.65%	1.41	26.63	8.3%	315	2%	-7%	0.17	0.27	5.3%	3.1%	0.911	0.395
Qurain Petrochemical Industries Company KSCP	0.299	0.001	0.34%	0.73	10.85	5.1%	306	8%	-4%	0.98	3.28	6.7%	6.1%	0.360	0.163
National Industries Group Holding KPSC	0.163	0.001	0.62%	0.62	5.02	6.6%	233	0%	-32%	0.74	4.58	12.3%	7.0%	0.261	0.121
Kuwait International Bank KSCP	0.175	0.000	0.00%	0.64	10.41	5.7%	178	1%	-33%	0.48	2.76	6.1%	0.6%	0.277	0.164
Mezzan Holding Company KSCP	0.570	-0.001	-0.18%	1.64	30.80	2.9%	174	-4%	13%	0.10	0.17	5.3%	4.0%	0.645	0.428
Integrated Holding Co KSCC	0.400	-0.002	-0.50%	1.28	11.14	10.0%	88	-6%	-28%	0.08	0.20	11.5%	9.6%	0.605	0.360
<b>Total</b>				<b>1.56</b>	<b>13.09</b>	<b>3.9%</b>	<b>21,501</b>			<b>33.50</b>	<b>104.88</b>	<b>11.9%</b>	<b>1.2%</b>		

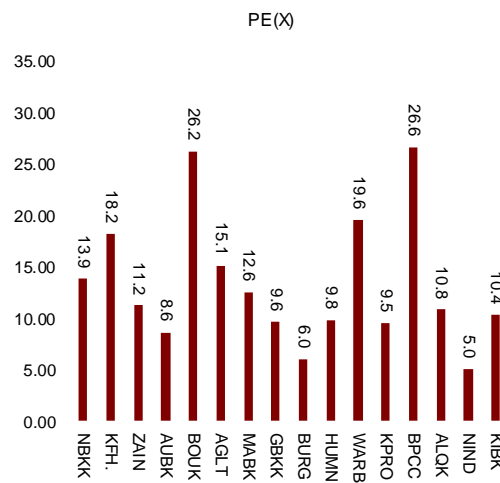
**By Market Cap**



**By Price to Book Value**



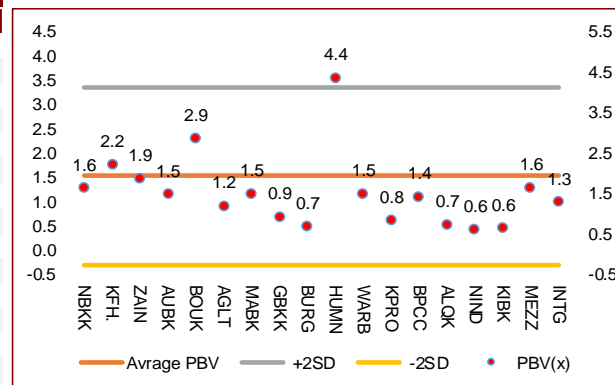
**By Price to Earning Value**



# Kuwait Daily Market Report

NIC Research and Studies Dep

Premier Market	Price			Valuation Multiples			MKT Cap	Price Performance		ROE (%)	ROA (%)
	Company	Close (KD)	Day Δ	Day % Δ	PBV(X)	PE(X)		DY%	MTD(%)		
National Bank of Kuwait SAKP	0.819	0.004	0.49%	1.62	13.9	3.9%	5,564	0%	-20%	11.7%	1.4%
Kuwait Finance House KSC	0.602	0.002	0.33%	2.22	18.2	2.7%	4,578	-2%	-18%	12.2%	1.3%
Mobile Telecommunications Company KSCP	0.563	0.000	0.00%	1.88	11.2	5.5%	2,436	2%	-6%	16.7%	8.3%
Ahli United Bank BSC	0.195	0.003	1.56%	1.47	8.6	6.2%	1,882	11%	-33%	17.1%	1.8%
Boubyan Bank KSCP	0.543	0.006	1.12%	2.86	26.2	1.2%	1,644	2%	-11%	10.9%	1.2%
Agility Public Warehousing Co KSCP	0.788	0.005	0.64%	1.19	15.1	2.6%	1,311	7%	-4%	7.9%	6.5%
Mabane Company KPSC	0.644	-0.010	-1.53%	1.50	12.6	1.6%	709	-4%	-24%	11.9%	6.1%
Gulf Bank KSCP	0.211	0.002	0.96%	0.92	9.6	4.7%	612	0%	-30%	9.6%	1.0%
Burgan Bank KPSC	0.195	0.001	0.52%	0.68	6.0	5.9%	511	-1%	-36%	11.3%	1.2%
Human Soft Holding Company KSCP	2.886	-0.042	-1.43%	4.37	9.8	6.4%	351	4%	-4%	44.6%	33.0%
Warba Bank KSCP	0.206	0.000	0.00%	1.49	19.6	0.0%	324	0%	-21%	7.6%	0.5%
Kuwait Projects Company Holding KSCP	0.157	0.000	0.00%	0.84	9.5	5.9%	285	-10%	-27%	8.9%	4.0%
Boubyan Petrochemical Company KSCP	0.624	0.004	0.65%	1.41	26.6	8.3%	315	2%	-7%	5.3%	3.1%
Qurain Petrochemical Industries Company KSC	0.299	0.001	0.34%	0.73	10.8	5.1%	306	8%	-4%	6.7%	6.1%
National Industries Group Holding KPSC	0.163	0.001	0.62%	0.62	5.0	6.6%	233	0%	-32%	12.3%	7.0%
Kuwait International Bank KSCP	0.175	0.000	0.00%	0.64	10.4	5.7%	178	1%	-33%	6.1%	0.6%
Mezzan Holding Company KSCP	0.570	-0.001	-0.18%	1.64	30.8	2.9%	174	-4%	13%	5.3%	4.0%
Integrated Holding Co KSCC	0.400	-0.002	-0.50%	1.28	11.1	10.0%	88	-6%	-28%	11.5%	9.6%
<b>Total</b>							<b>21,501</b>				



Premier Market	Price			Moving Average		RSI	MKT Cap	Price Performance		52 Week (KD)	
	Discription	Close (KD)	Day Δ	Day % Δ	50 Day			200 Day	14 Day	Mn KD	MTD(%)
Premier Index	5,661	24,680	0.44%	5,426	6,024	66	21,501	0.011	-18.72%	7,172	4,499

### Top 5 Performrs (Today's Price Change)

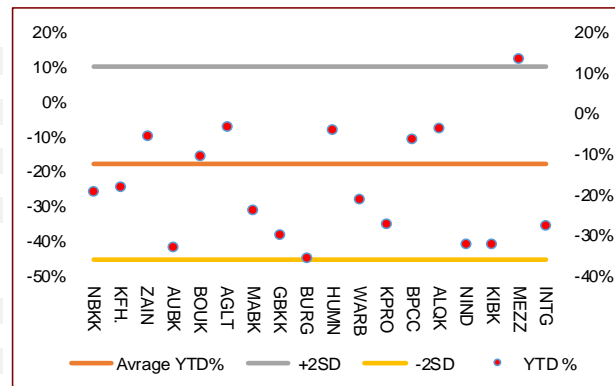
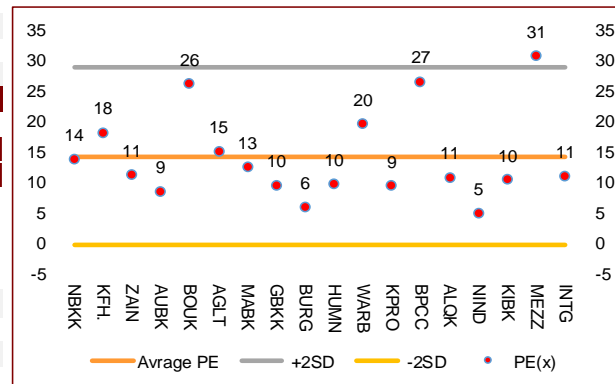
Ahli United Bank BSC	0.195	0.003	1.56%	0.180	0.236	81	1,882	11%	-33%	0.311	0.160
Boubyan Bank KSCP	0.543	0.006	1.12%	0.507	0.536	82	1,644	2%	-11%	0.638	0.380
Gulf Bank KSCP	0.211	0.002	0.96%	0.215	0.255	42	612	0%	-30%	0.323	0.180
Boubyan Petrochemical Company KSCP	0.624	0.004	0.65%	0.557	0.625	81	315	2%	-7%	0.911	0.395
Agility Public Warehousing Co KSCP	0.788	0.005	0.64%	0.677	0.709	88	1,311	7%	-4%	0.860	0.410

### Middel Performrs (Today's Price Change)

National Industries Group Holding KPSC	0.163	0.001	0.62%	0.167	0.201	40	233	0%	-32%	0.261	0.121
Burgan Bank KPSC	0.195	0.001	0.52%	0.197	0.260	44	511	-1%	-36%	0.359	0.178
National Bank of Kuwait SAKP	0.819	0.004	0.49%	0.778	0.870	60	5,564	0%	-20%	1.062	0.654
Qurain Petrochemical Industries Company KSC	0.299	0.001	0.34%	0.257	0.274	79	306	8%	-4%	0.360	0.163
Kuwait Finance House KSC	0.602	0.002	0.33%	0.602	0.640	51	4,578	-2%	-18%	0.761	0.473
Mobile Telecommunications Company KSCP	0.563	0.000	0.00%	0.540	0.546	51	2,436	2%	-6%	0.604	0.407
Warba Bank KSCP	0.206	0.000	0.00%	0.204	0.230	63	324	0%	-21%	0.279	0.164
Kuwait Projects Company Holding KSCP	0.157	0.000	0.00%	0.169	0.196	22	285	-10%	-27%	0.231	0.152

### Bottom 5 Performrs (Today's Price Change)

Mabane Company KPSC	0.644	-0.010	-1.53%	0.626	0.705	46	709	-4%	-24%	0.877	0.434
Human Soft Holding Company KSCP	2.886	-0.042	-1.43%	2.708	2.912	76	351	4%	-4%	3.490	1.944
Integrated Holding Co KSCC	0.400	-0.002	-0.50%	0.405	0.468	28	88	-6%	-28%	0.605	0.360
Mezzan Holding Company KSCP	0.570	-0.001	-0.18%	0.587	0.541	19	174	-4%	13%	0.645	0.428
Kuwait International Bank KSCP	0.175	0.000	0.00%	0.177	0.226	44	178	1%	-33%	0.277	0.164



## Market Sectors

Banking Sector	Price			Valuation Multiples			MKT Cap	Price Performance		Trading Indicators		ROE	ROA	52 Week (KD)	
	Company	Close (KD)	Day Δ	Day % Δ	PBV(X)	PE(X)		DY%	Mn KD	MTD(%)	YTD (%)			Value (Mn KD)	(Mn Shrs)
National Bank of Kuwait SAKP	0.819	0.004	0.49%	1.62	13.87	3.9%	5,564	0%	-20%	1.34	1.63	11.7%	1.4%	1.062	0.654
Kuwait Finance House KSC	0.602	0.002	0.33%	2.22	18.24	2.7%	4,578	-2%	-18%	5.21	8.68	12.2%	1.3%	0.761	0.473
Ahli United Bank BSC	0.195	0.003	1.56%	1.47	8.59	6.2%	1,882	11%	-33%	10.31	52.88	17.1%	1.8%	0.311	0.160
Boubyan Bank KSCP	0.543	0.006	1.12%	2.86	26.25	1.2%	1,644	2%	-11%	1.59	2.93	10.9%	1.2%	0.638	0.380
Commercial Bank of Kuwait KPSC	0.500	0.000	0.00%	1.32	0.00	3.7%	967	0%	-5%	0.00	0.00	0.0%	0.0%	0.569	0.465
Gulf Bank KSCP	0.211	0.002	0.96%	0.92	9.61	4.7%	612	0%	-30%	1.86	8.78	9.6%	1.0%	0.323	0.180
Burgan Bank KPSC	0.195	0.001	0.52%	0.68	6.03	5.9%	511	-1%	-36%	0.12	0.63	11.3%	1.2%	0.359	0.178
Ahli United Bank KSCP	0.254	0.002	0.79%	1.09	9.00	5.4%	495	0%	-22%	0.37	1.46	12.1%	1.3%	0.348	0.225
Warba Bank KSCP	0.206	0.000	0.00%	1.49	19.62	0.0%	324	0%	-21%	0.16	0.75	7.6%	0.5%	0.279	0.164
Al Ahli Bank of Kuwait KSCP	0.179	0.003	1.70%	0.51	10.02	7.8%	287	1%	-30%	0.12	0.68	5.1%	0.6%	0.345	0.156
Kuwait International Bank KSCP	0.175	0.000	0.00%	0.64	10.41	5.7%	178	1%	-33%	0.48	2.76	6.1%	0.6%	0.277	0.164
Ithmaar Holding BSC	0.022	0.000	0.00%	0.08	323.35	0.0%	65	0%	0%	0.00	0.00	0.0%	0.0%	0.022	0.022
<b>Total Banking Sector - 12 Companies</b>				<b>1.44</b>	<b>14.26</b>	<b>3.7%</b>	<b>17,108</b>			<b>21.6</b>	<b>81.2</b>				

Basic materials	Price			Valuation Multiples			MKT Cap	Price Performance		Trading Indicators		ROE	ROA	52 Week (KD)	
	Company	Close (KD)	Day Δ	Day % Δ	PBV(X)	PE(X)		DY%	Mn KD	MTD(%)	YTD (%)			Value (Mn KD)	(Mn Shrs)
Boubyan Petrochemical Company KSCP	0.624	0.004	0.65%	1.41	26.6	8.3%	315	2%	-7%	0.17	0.27	5.3%	3.1%	0.911	0.395
Qurain Petrochemical Industries Company KS	0.299	0.001	0.34%	0.73	10.8	5.1%	306	8%	-4%	0.98	3.28	6.7%	6.1%	0.360	0.163
Al Kout Industrial Projects Company KPSC	0.769	0.000	0.00%	2.50	16.2	6.5%	78	-1%	-10%	0.00	0.00	15.4%	13.9%	0.850	0.769
Kuwait Foundry Company KPSC	0.238	0.010	4.39%	0.80	19.2	22.4%	17	0%	-32%	0.00	0.00	4.1%	2.3%	0.564	0.192
<b>Total Basic materials - 4 Companies</b>				<b>1.03</b>	<b>15.65</b>	<b>7.1%</b>	<b>716</b>			<b>1.14</b>	<b>3.55</b>				

Consumer goods	Price			Valuation Multiples			MKT Cap	Price Performance		Trading Indicators		ROE	ROA	52 Week (KD)	
	Company	Close (KD)	Day Δ	Day % Δ	PBV(X)	PE(X)		DY%	Mn KD	MTD(%)	YTD (%)			Value (Mn KD)	(Mn Shrs)
Mezzan Holding Company KSCP	0.570	-0.001	-0.18%	1.64	30.8	2.9%	174	-4%	13%	0.10	0.17	5.3%	4.0%	0.645	0.428
Livestock Transport and Trading Co KPSC	0.189	0.002	1.07%	0.98	33.7	0.1%	40	2%	8%	0.02	0.10	2.9%	2.6%	0.200	0.152
Danah Al Safat Foodstuff Co KPSC	0.012	0.000	0.00%	0.25	-0.3	0.1%	1	1%	-25%	0.00	0.00	-84.8%	-88.3%	0.029	0.010
<b>Total Basic materials - 3 Companies</b>				<b>1.42</b>	<b>86.87</b>	<b>2.4%</b>	<b>214</b>			<b>0.12</b>	<b>0.27</b>				

Consumer services	Price			Valuation Multiples			MKT Cap	Price Performance		Trading Indicators		ROE	ROA	52 Week (KD)	
	Company	Close (KD)	Day Δ	Day % Δ	PBV(X)	PE(X)		DY%	Mn KD	MTD(%)	YTD (%)			Value (Mn KD)	(Mn Shrs)
Jazeera Airways Co KSCP	0.638	-0.008	-1.24%	3.17	8.5	5.5%	128	-4%	-42%	0.10	0.16	37.1%	9.3%	1.110	0.372
Kuwait National Cinema Company KPSC	0.750	0.000	0.00%	0.86	8.1	6.4%	70	0%	-28%	0.00	0.00	10.6%	8.5%	1.050	0.655
Al Soor Fuel Marketing Company KSCP	0.111	0.001	0.91%	0.68	12.9	4.5%	45	0%	-12%	0.00	0.02	5.3%	3.9%	0.129	0.096
Oula Fuel Marketing Co KSCP	0.111	0.001	0.91%	0.67	11.6	5.3%	45	0%	-13%	0.00	0.03	5.7%	3.9%	0.134	0.095
Sultan Center Food Products Company KSCP	0.056	0.000	0.00%	0.70	14.1	0.0%	32	2%	8%	0.00	0.05	4.9%	3.8%	0.060	0.036
IFA Hotels and Resorts Co KSCP	0.024	0.001	2.15%	0.85	-0.6	0.0%	14	-2%	-57%	0.00	0.02	-131.5%	-4.7%	0.065	0.021
Jiyad Holding Co KSCP	0.033	0.001	2.80%	0.30	6.6	0.0%	12	1%	-17%	0.01	0.34	4.5%	3.7%	0.050	0.029
Kuwait Resorts Company KPSC	0.052	0.001	1.57%	0.35	9.4	0.0%	10	-6%	-17%	0.05	1.04	3.8%	3.8%	0.064	0.040
Future Kid Entertainment and Real Estate Co	0.090	0.013	17.19%	0.55	35.5	12.3%	10	18%	2%	0.00	0.01	1.5%	2.6%	0.110	0.069
Al Eid Food Company KSCP	0.086	-0.002	-2.16%	0.48	5.7	0.0%	9	0%	9%	0.00	0.00	8.4%	8.4%	0.096	0.046
Alrai Media Group Co KSCP	0.037	0.000	0.00%	0.83	-2.4	0.0%	9	0%	-2%	0.00	0.00	-34.2%	-19.3%	0.049	0.029
Kuwait Hotels Co KPSC	0.093	0.000	0.00%	1.31	-5.4	0.0%	5	0%	-7%	0.00	0.00	-24.4%	-13.2%	0.100	0.086
Palms Agro Production Co KSCP	0.060	0.000	0.00%	0.51	-42.3	16.6%	3	0%	49%	0.00	0.00	-1.2%	0.2%	0.060	0.025
Kuwait Cable Vision Company KPSC	0.014	0.000	0.00%	0.52	-11.6	0.0%	1	0%	0%	0.00	0.00	-4.5%	-3.0%	0.027	0.012
<b>Total Consumer services - 14 Companies</b>				<b>0.88</b>	<b>37.08</b>	<b>4.5%</b>	<b>391</b>			<b>0.17</b>	<b>1.66</b>				

Financial services Company	Price			Valuation Multiples			MKT Cap	Price Performance		Trading Indicators		ROE	ROA	52 Week (KD)	
	Close (KD)	Day Δ	Day % Δ	PBV(X)	PE(X)	DY%	Mn KD	MTD(%)	YTD (%)	Value (Mn KD)	(Mn Shrs)	(%)	(%)	High	Low
Egypt Kuwait Holding Co SAE	0.375	0.000	0.00%	2.22	12.7	5.2%	384	0%	-17%	0.00	0.00	17.6%	12.6%	0.500	0.318
Kuwait Projects Company Holding KSCP	0.157	0.000	0.00%	0.84	9.5	5.9%	285	-10%	-27%	0.36	2.29	8.9%	4.0%	0.231	0.152
National Industries Group Holding KPSC	0.163	0.001	0.62%	0.62	5.0	6.6%	233	0%	-32%	0.74	4.58	12.3%	7.0%	0.261	0.121
GFH Financial Group BSC	0.046	0.000	0.00%	0.55	6.8	5.7%	170	-3%	-33%	0.00	0.04	8.0%	1.1%	0.078	0.042
Alimtiiaz Investment Group Co KSCP	0.094	0.001	0.75%	0.47	5.1	8.1%	101	3%	-25%	0.25	2.65	9.1%	6.1%	0.147	0.071
Commercial Facilities Co SAKP	0.186	0.000	0.00%	0.58	7.2	9.0%	94	-5%	-14%	0.00	0.00	8.0%	4.4%	0.235	0.179
National Investments Co KSCP	0.110	0.003	2.80%	0.49	8.2	7.4%	88	9%	-20%	0.94	8.57	5.9%	5.7%	0.155	0.080
Tamdeen Investment Co KSCP	0.249	0.014	5.96%	0.31	10.3	4.8%	85	5%	-28%	0.01	0.02	3.0%	3.3%	0.400	0.222
Kuwait Investment Company KPSC	0.112	0.002	1.82%	0.49	3.5	9.0%	61	6%	-25%	0.11	1.03	13.9%	7.8%	0.172	0.095
Noor Financial Investment Co KPSC	0.149	-0.008	-5.10%	0.93	7.4	3.3%	60	9%	26%	0.67	4.43	12.5%	10.1%	0.184	0.076
Al Bareeq Holding KSCP	0.106	0.000	0.00%	1.11	21.2	0.0%	46	0%	6%	0.00	0.00	5.2%	5.1%	0.110	0.100
Kuwait Financial Centre KPSC	0.079	0.001	1.28%	0.40	5.5	6.2%	38	2%	-25%	0.13	1.64	7.3%	5.1%	0.121	0.075
Aayan Leasing and Investment Co KSCP	0.045	0.000	0.22%	0.52	-2.5	4.0%	36	1%	-4%	0.20	4.31	-21.4%	-4.4%	0.066	0.032
Arabi Group Holdings KSCP	0.198	0.000	0.00%	1.07	-19.9	0.0%	33	0%	-28%	0.00	0.00	-5.4%	3.6%	0.337	0.073
Arzan Financial Group for Financing and Invest	0.043	0.002	3.86%	0.35	31.3	0.0%	34	14%	83%	0.82	19.07	1.1%	2.3%	0.047	0.022
Privatization Holding Co KPSC	0.041	0.000	0.00%	0.30	-37.2	0.0%	25	-3%	-17%	0.02	0.47	-0.8%	0.8%	0.059	0.037
Asiya Capital Investments Company KSCP	0.032	0.001	2.86%	0.35	16.7	0.2%	25	-4%	-21%	0.02	0.62	2.1%	2.1%	0.041	0.029
KAMCO Investment Co KSCP	0.074	-0.001	-0.67%	0.45	8.4	0.0%	25	-4%	-18%	0.00	0.04	5.4%	5.9%	0.111	0.060
Kuwait and Middle East Financial Investment (	0.095	0.000	0.42%	1.55	38.1	0.0%	25	6%	7%	0.00	0.01	4.1%	4.3%	0.108	0.041
Umm Al Qaiwain General Investment Co PSC	0.067	0.000	0.00%	0.45	12.5	5.5%	24	0%	0%	0.00	0.00	3.6%	3.3%	0.087	0.052
Securities House KSCP	0.042	0.000	0.24%	0.58	-61.5	0.0%	23	5%	-7%	0.28	6.57	-0.9%	1.4%	0.052	0.027
Gulf Investment House KSCP	0.051	0.002	4.08%	0.57	94.3	0.0%	21	-4%	-21%	0.00	0.02	0.6%	0.5%	0.078	0.038
Coast Investment and Development Co KSCP	0.035	0.001	3.55%	0.37	34.9	0.0%	20	2%	-17%	0.00	0.00	1.1%	1.1%	0.045	0.026
Bayan Investment Co KSCP	0.049	-0.001	-1.80%	0.49	-25.3	0.0%	18	-2%	29%	0.00	0.00	-1.9%	-0.9%	0.053	0.031
First Investment Co KSCP	0.026	-0.001	-2.26%	0.40	-0.4	0.0%	17	-4%	-24%	0.25	9.66	-113.6%	63.0%	0.045	0.024
Al Madar Finance and Investment Co KSCP	0.080	0.000	-0.25%	0.72	11.9	0.0%	17	0%	-14%	0.01	0.08	6.1%	3.0%	0.148	0.062
Invost BSC Public	0.059	0.001	1.72%	0.41	8.0	9.9%	18	2%	-14%	0.01	0.18	5.2%	2.7%	0.071	0.044
Al Manar Financing and Leasing Co KSCC	0.050	0.002	3.30%	0.46	12.9	1.0%	15	-7%	-3%	0.00	0.03	3.5%	2.8%	0.060	0.037
Osoul Investment Co KSCP	0.085	0.000	-0.12%	0.61	6.8	0.0%	12	-19%	13%	0.03	0.33	9.0%	8.7%	0.121	0.057
National International Holding Co KSCP	0.069	0.000	0.00%	0.34	7.9	4.5%	14	0%	-11%	0.00	0.00	4.4%	4.7%	0.085	0.051
Kuwait Finance and Investment Company KSC	0.043	0.002	3.86%	0.34	19.4	0.0%	13	1%	-13%	0.01	0.22	1.8%	2.3%	0.058	0.037
Manazel Holding Co KPSC	0.030	0.000	-0.67%	0.65	19.2	0.0%	13	0%	-25%	0.00	0.12	3.4%	1.2%	0.048	0.021
Amar Finance and Leasing Company KSCP	0.052	0.000	0.00%	0.59	43.8	0.0%	10	0%	38%	0.00	0.00	1.3%	1.3%	0.066	0.025
UniCap Investment and Finance Co KSCP	0.038	-0.001	-1.32%	0.38	-18.8	0.0%	9	-4%	-32%	0.00	0.03	-2.0%	0.3%	0.057	0.035
Al Aman Investment Company KPSC	0.057	0.000	0.00%	0.00	0.0	0.0%	9	0%	-4%	0.00	0.00	0.0%	0.0%	0.062	0.050
Gulf North Africa Holding Co KPSC	0.055	0.001	1.10%	0.73	70.9	0.0%	8	0%	-11%	0.00	0.08	1.0%	2.5%	0.062	0.052
International Financial Advisors KPSC	0.030	-0.001	-4.46%	0.91	-0.4	2.1%	7	1%	-43%	0.04	1.20	-222.8%	-17.0%	0.068	0.027
Kuwait Syrian Holding Co KSCP	0.037	-0.005	-10.90%	0.31	-18.8	0.0%	6	-15%	17%	0.00	0.00	-1.7%	-1.1%	0.044	0.022
Amwal International Investment Company KSC	0.038	0.000	0.00%	0.71	14.0	0.0%	7	0%	27%	0.00	0.00	5.0%	6.3%	0.056	0.030
Al Salam Group Holding Co KSCP	0.022	-0.001	-5.65%	0.19	163.8	0.0%	6	-6%	-26%	0.18	8.23	0.1%	0.1%	0.043	0.018
Warba Capital Holding Co KSC	0.056	0.000	0.00%	0.62	-8.9	0.0%	6	-3%	-13%	0.00	0.02	-7.0%	-5.0%	0.120	0.045
Credit Rating and Collection Company KSCP	0.035	0.000	0.00%	1.08	-23.7	0.0%	6	10%	76%	0.00	0.00	-4.6%	-4.3%	0.037	0.015
National Consumer Holding Company KSCP	0.055	0.000	0.00%	0.61	269.6	0.0%	5	0%	0%	0.00	0.00	0.2%	0.3%	0.100	0.010
Al Madina for Finance and Investment Co KSC	0.011	0.000	-1.82%	0.37	-2.0	0.0%	4	-9%	-28%	0.01	0.53	-17.9%	-7.7%	0.019	0.009
Ekttitab Holding Co KSCP	0.014	0.000	0.70%	0.35	-10.1	0.0%	5	8%	-3%	0.02	1.43	-3.4%	-3.0%	0.019	0.010
Kuwait Bahrain International Exchange Compa	0.086	0.000	0.00%	0.00	0.0	0.0%	4	0%	0%	0.00	0.00	0.0%	0.0%	0.086	0.086
Al Deera Holding Co KPSC	0.017	0.000	0.00%	0.75	-9.7	0.0%	3	-6%	-13%	0.00	0.00	-7.7%	-2.2%	0.022	0.010
Al Mal Investment Company KPSC	0.010	0.000	2.15%	0.42	-0.9	0.0%	3	0%	-4%	0.02	1.96	-47.6%	-23.1%	0.016	0.008
Gulf Franchising Holding Co KSCP	0.065	-0.003	-5.00%	1.01	-2.8	0.0%	3	-5%	-14%	0.00	0.01	-36.2%	-10.8%	0.179	0.001
Tamkeen Holding KSCC	0.005	0.000	0.00%	0.05	-7.2	0.0%	0	0%	0%	0.00	0.00	-0.7%	-0.7%	0.007	0.004
<b>Total Financial services - 50 Companies</b>				<b>0.63</b>	<b>15.02</b>	<b>4.8%</b>	<b>2,176</b>			<b>5.14</b>	<b>80.47</b>				

Health care	Price			Valuation Multiples			MKT Cap	Price Performance		Trading Indicators		ROE	ROA	52 Week (KD)	
	Company	Close (KD)	Day Δ	Day % Δ	PBV(X)	PE(X)		DY%	Mn KD	MTD(%)	YTD (%)			Value (Mn KD)	(Mn Shrs)
Al-Maidan Clinic for Oral Health Services Com	1.220	0.000	0.00%	7.90	47.8	0.6%	305	0%	0%	0.00	0.00	16.5%	11.6%	1.240	1.220
Advanced Technology Co KSCP	0.660	0.000	0.00%	1.72	53.7	2.3%	99	10%	-19%	0.00	0.00	3.2%	3.5%	1.000	0.580
Yiaco Medical Company KPSC	0.707	0.000	0.00%	6.06	52.7	0.0%	12	0%	0%	0.00	0.00	11.5%	3.1%	0.707	0.707
<b>Total Health care - 3 Companies</b>				<b>4.24</b>	<b>49.21</b>	<b>1.0%</b>	<b>416</b>			<b>0.00</b>	<b>0.00</b>				

Industrials	Price			Valuation Multiples			MKT Cap	Price Performance		Trading Indicators		ROE	ROA	52 Week (KD)	
	Company	Close (KD)	Day Δ	Day % Δ	PBV(X)	PE(X)		DY%	Mn KD	MTD(%)	YTD (%)			Value (Mn KD)	(Mn Shrs)
Agility Public Warehousing Co KSCP	0.788	0.005	0.64%	1.19	15.1	2.6%	1,311	7%	-4%	4.33	5.49	7.9%	6.5%	0.860	0.410
Human Soft Holding Company KSCP	2.886	-0.042	-1.43%	4.37	9.8	6.4%	351	4%	-4%	0.24	0.08	44.6%	33.0%	3.490	1.944
ALAFCO Aviation Lease and Finance Compan	0.172	0.002	1.18%	0.51	9.3	5.8%	164	2%	-37%	0.21	1.22	5.5%	3.7%	0.305	0.138
Kuwait Cement Co KSCP	0.173	-0.001	-0.57%	0.59	30.7	8.6%	123	-7%	-30%	0.06	0.37	1.9%	2.3%	0.294	0.144
Gulf Cable and Electrical Industries Co KPSC	0.599	0.017	2.92%	0.72	29.7	4.6%	126	7%	23%	0.71	1.20	2.4%	2.7%	0.594	0.390
Integrated Holding Co KSCC	0.400	-0.002	-0.50%	1.28	11.1	10.0%	88	-6%	-28%	0.08	0.20	11.5%	9.6%	0.605	0.360
Kuwait Portland Cement Co KPSC	0.818	-0.002	-0.24%	1.10	10.8	12.0%	82	5%	-17%	0.03	0.04	10.2%	8.8%	1.230	0.685
United Projects for Aviation Services Co KSCP	0.465	0.000	0.00%	0.98	8.0	4.5%	74	0%	-9%	0.00	0.00	12.3%	9.1%	0.512	0.367
Heavy Engineering Industries and Shipbuilding	0.357	0.001	0.28%	1.03	5.7	8.2%	64	-12%	-12%	0.27	0.75	18.0%	7.1%	0.423	0.298
Educational Holding Group KSCP	0.310	0.000	0.00%	1.79	9.8	4.8%	76	5%	-29%	0.00	0.00	18.3%	17.8%	0.475	0.228
National Industries Company KPSC	0.160	0.008	5.26%	0.68	13.4	6.0%	57	5%	-3%	0.00	0.00	5.1%	7.8%	0.185	0.143
ACICO Industries Company KSCP	0.104	-0.001	-0.95%	0.34	13.6	4.7%	34	-5%	-22%	0.00	0.00	2.5%	2.8%	0.159	0.081
Kuwait Company for Process Plant Constructi	0.361	-0.003	-0.82%	1.30	7.0	5.4%	35	6%	37%	0.30	0.82	18.5%	8.4%	0.371	0.189
Ras Al Khaimah for White Cement and Constr	0.065	0.000	0.00%	0.51	19.9	8.4%	33	0%	0%	0.00	0.00	2.6%	4.7%	0.080	0.053
Gulf Cement Co PSC	0.038	0.000	0.00%	0.38	-13.8	11.0%	31	0%	-31%	0.00	0.00	-2.7%	-2.0%	0.063	0.032
Combined Group Contracting Company KSCP	0.182	0.002	1.11%	0.63	8.2	11.3%	30	-1%	-30%	0.12	0.67	7.7%	3.0%	0.264	0.150
Sharjah Cement and Industrial Development Co	0.042	0.000	0.00%	0.21	25.3	12.4%	26	0%	0%	0.00	0.00	0.8%	1.2%	0.068	0.042
KGL Logistics Company KPSC	0.028	0.000	0.00%	0.21	4.6	0.1%	21	0%	-26%	0.00	0.15	4.6%	3.7%	0.043	0.024
Fujairah Cement Industries Co PSC	0.041	0.001	1.23%	0.17	19.9	10.2%	15	3%	-9%	0.00	0.00	0.8%	2.3%	0.057	0.035
Shuaiba Industrial Company KPSC	0.134	0.000	0.00%	0.75	41.6	7.4%	13	-4%	-14%	0.00	0.00	1.8%	2.0%	0.180	0.122
Kuwait and Gulf Link Transport Company KPS	0.048	0.000	0.21%	0.20	14.6	0.0%	13	1%	-27%	0.01	0.19	1.4%	2.2%	0.084	0.042
National Cleaning Co KSCP	0.054	0.000	0.00%	0.35	7.9	8.6%	13	-1%	-21%	0.00	0.00	4.4%	2.3%	0.088	0.047
Mubarrad Holding Co KSCP	0.059	-0.004	-5.95%	0.46	9.4	8.0%	10	-9%	-33%	0.01	0.13	4.9%	5.1%	0.089	0.049
Specialities Group Holding Company KPSC	0.067	0.002	2.30%	0.33	7.2	0.0%	10	0%	-21%	0.04	0.59	4.5%	7.1%	0.086	0.055
Hilal Cement Company KSCP	0.075	0.000	0.00%	0.65	-6.2	20.0%	8	0%	-25%	0.00	0.00	-10.6%	-5.3%	0.118	0.063
National Ranges Co KPSC	0.018	0.001	6.51%	0.33	-1.3	0.0%	5	16%	80%	0.04	2.38	-24.9%	-4.2%	0.017	0.007
Metal and Recycling Co KSCP	0.046	0.002	4.84%	0.38	-1.9	0.0%	4	-5%	-9%	0.00	0.00	-19.7%	-7.2%	0.070	0.020
Salbookh Trading Co KSCP	0.032	0.000	-1.24%	0.43	-1.9	0.0%	3	2%	-37%	0.00	0.02	-23.2%	-15.3%	0.051	0.026
Equipment Holding Co KSCP	0.014	0.000	0.00%	0.27	-155.9	0.0%	2	0%	-38%	0.00	0.00	-0.2%	0.4%	0.024	0.013
<b>Total Health care - 29 Companies</b>				<b>0.90</b>	<b>13.45</b>	<b>4.9%</b>	<b>2,821</b>			<b>6.46</b>	<b>14.31</b>				

Insurance	Price			Valuation Multiples			MKT Cap	Price Performance		Trading Indicators		ROE	ROA	52 Week (KD)	
	Company	Close (KD)	Day Δ	Day % Δ	PBV(X)	PE(X)		DY%	Mn KD	MTD(%)	YTD (%)			Value (Mn KD)	(Mn Shrs)
Gulf Insurance Group KSCP	0.556	-0.029	-4.96%	0.91	7.5	6.9%	100	-10%	-16%	0.01	0.01	12.3%	3.0%	0.687	0.585
Al Ahleia Insurance Co SAKP	0.410	0.000	0.00%	0.74	7.9	8.6%	81	0%	-4%	0.00	0.00	9.4%	3.7%	0.445	0.385
Kuwait Insurance Company SAKP	0.340	0.000	0.00%	0.56	6.6	7.0%	63	5%	3%	0.00	0.00	8.5%	4.9%	0.387	0.298
Kuwait Reinsurance Company KSCP	0.188	0.000	0.00%	0.71	8.0	2.3%	38	0%	36%	0.00	0.00	8.9%	3.4%	0.188	0.121
Bahrain Kuwait Insurance Co BSC	0.200	0.000	0.00%	0.93	12.9	6.1%	28	0%	0%	0.00	0.00	7.2%	0.9%	0.200	0.200
Warba Insurance Company KSCP	0.081	0.000	0.00%	0.34	11.2	0.0%	13	6%	30%	0.00	0.00	3.1%	1.0%	0.096	0.053
First Takaful Insurance Co KPSC	0.042	0.000	0.00%	0.51	5.3	0.0%	4	7%	10%	0.00	0.01	9.6%	6.3%	0.056	0.031
Wethaq Takaful Insurance Co KCSP	0.025	0.002	9.21%	0.23	-31.5	0.0%	3	4%	0%	0.02	0.83	-0.7%	-0.7%	0.033	0.018
<b>Total Insurance - 8 Companies</b>				<b>0.70</b>	<b>7.85</b>	<b>6.3%</b>	<b>330</b>			<b>0.03</b>	<b>0.85</b>				

Oil and Gas	Price			Valuation Multiples			MKT Cap	Price Performance		Trading Indicators		ROE	ROA	52 Week (KD)	
	Company	Close (KD)	Day Δ	Day % Δ	PBV(X)	PE(X)		DY%	Mn KD	MTD(%)	YTD (%)			Value (Mn KD)	(Mn Shrs)
Burgan for Well Drilling Trading and Maintenan	0.070	0.000	0.00%	0.25	7.1	0.0%	16	0%	-13%	0.00	0.00	3.6%	3.2%	0.099	0.062
Energy House Holding Company KSCP	0.022	-0.002	-8.09%	0.67	-3.0	0.0%	16	-12%	-5%	0.03	1.13	-22.5%	-15.6%	0.036	0.014
Gulf Petroleum Investment Company KSCP	0.016	0.000	1.29%	0.17	-5.1	0.0%	7	-2%	-22%	0.01	0.95	-3.4%	-2.2%	0.025	0.012
Independent Petroleum Group KSCP	0.380	0.000	0.00%	0.70	10.4	7.9%	69	0%	-21%	0.00	0.00	6.8%	2.2%	0.497	0.375
National Petroleum Services Company KSCP	1.129	0.000	0.00%	2.69	9.6	6.2%	110	4%	-4%	0.00	0.00	27.9%	25.2%	1.389	0.903
Senergy Holding Company KSCP	0.018	-0.001	-2.67%	0.37	-0.8	0.0%	4	1%	-17%	0.00	0.19	-47.9%	-28.9%	0.027	0.014
<b>Total Oil and Gas - 6 Companies</b>				<b>0.80</b>	<b>25.69</b>	<b>5.5%</b>	<b>221</b>				<b>0.04</b>	<b>2.27</b>			

Real estate	Price			Valuation Multiples			MKT Cap	Price Performance		Trading Indicators		ROE	ROA	52 Week (KD)	
	Company	Close (KD)	Day Δ	Day % Δ	PBV(X)	PE(X)		DY%	Mn KD	MTD(%)	YTD (%)			Value (Mn KD)	(Mn Shrs)
Mabane Company KPSC	0.644	-0.010	-1.53%	1.50	12.6	1.6%	709	-4%	-24%	0.67	1.03	11.9%	6.1%	0.877	0.434
Salhia Real Estate Co KSCP	0.420	0.000	0.00%	1.27	9.7	4.7%	208	9%	1%	0.09	0.22	13.2%	6.2%	0.460	0.324
Commercial Real Estate Co KPSC	0.098	0.000	0.00%	0.58	11.8	6.0%	172	2%	4%	0.03	0.30	5.0%	3.8%	0.106	0.085
Tamdeen Real Estate Co KPSC	0.260	0.000	0.00%	0.39	13.2	3.7%	109	-1%	-19%	0.00	0.00	3.0%	2.3%	0.350	0.248
National Real Estate Co KSCP	0.076	0.001	1.60%	0.40	9.6	0.0%	109	2%	-17%	0.31	4.10	4.2%	2.3%	0.095	0.060
Kuwait Real Estate Company KPSC	0.084	-0.001	-0.94%	0.57	10.3	0.5%	73	4%	-20%	0.02	0.22	5.5%	5.9%	0.115	0.070
United Real Estate Company SAKP	0.052	0.002	4.60%	0.30	-7.8	0.0%	56	7%	-15%	0.00	0.00	-3.9%	1.4%	0.066	0.049
First Dubai for Real Estate Development Co K	0.036	0.000	0.55%	0.49	39.9	1.1%	36	0%	2%	0.02	0.54	1.2%	2.1%	0.055	0.026
Al Mazaya Holding Company KSCP	0.051	-0.001	-1.55%	0.40	-3.6	0.1%	32	-2%	-14%	0.01	0.25	-11.0%	-0.9%	0.067	0.047
Dar Al Thuraya Real Estate Co KPSC	0.151	0.000	0.00%	1.43	39.8	0.0%	22	6%	115%	0.00	0.00	3.6%	-1.2%	0.190	0.040
Injazat Real Estate Development Company K	0.080	0.000	0.00%	0.51	-3.8	8.6%	27	4%	0%	0.00	0.00	-13.4%	-6.9%	0.091	0.061
Ajial Real Estate Entertainment Co KSCP	0.136	-0.001	-0.73%	0.20	12.5	0.0%	25	2%	-25%	0.00	0.00	1.6%	1.9%	0.224	0.121
Arkan Al Kuwait Real Estate Company KSCP	0.090	0.000	0.00%	0.64	9.8	8.7%	23	-6%	1%	0.00	0.00	6.6%	7.1%	0.100	0.076
Al Argan International Real Estate Co KSCP	0.085	0.000	0.00%	0.25	27.6	5.7%	22	-1%	-19%	0.00	0.00	0.9%	2.8%	0.176	0.060
Al-Enmaa Real Estate Company KSCP	0.044	0.001	2.08%	0.44	11.7	0.0%	20	-5%	-29%	0.01	0.28	3.8%	2.5%	0.079	0.040
Aayan Real Estate Company KSCP	0.053	0.000	-0.38%	0.29	9.8	9.5%	21	-1%	-28%	0.00	0.00	3.0%	2.8%	0.080	0.051
Dalqan Real Estate Company KSCP	0.350	0.000	0.00%	2.91	59.0	0.0%	19	0%	0%	0.00	0.00	4.9%	5.1%	0.350	0.350
Kuwait Business Town Real Estate Co KSCP	0.029	0.000	0.69%	0.27	7.4	0.3%	18	0%	-34%	0.03	0.91	3.6%	2.8%	0.046	0.027
Tijara and Realestate Investment Company KS	0.050	0.000	0.00%	0.47	13.1	4.0%	18	0%	0%	0.00	0.00	3.6%	5.0%	0.055	0.034
Munshaat Real Estate Projects Co KSCP	0.051	0.001	2.00%	0.35	18.8	4.1%	16	-2%	-31%	0.00	0.00	1.8%	-1.2%	0.086	0.047
Aqar Real Estate Investments Co KSCP	0.077	0.000	0.00%	0.56	6.4	6.4%	16	0%	-4%	0.00	0.00	8.7%	9.3%	0.089	0.062
Sokouk Holding Co KSCP	0.025	0.000	-1.18%	0.31	-4.2	0.0%	14	0%	-29%	0.03	1.04	-7.4%	4.1%	0.040	0.022
Al-Arabiya Real Estate Co KSCP	0.024	0.000	0.41%	0.21	7.4	2.5%	12	3%	-17%	0.00	0.05	2.9%	12.0%	0.033	0.020
Mashaer Holding Co KSCP	0.063	0.000	0.00%	0.48	6.8	0.0%	11	-2%	-19%	0.01	0.18	7.1%	5.5%	0.086	0.048
Osos Holding Group Co KSCP	0.096	-0.001	-0.93%	0.76	7.2	9.9%	10	-2%	-7%	0.00	0.00	10.5%	7.3%	0.118	0.089
Abyaar Real Estate Development Company K	0.008	0.000	2.74%	0.22	-0.5	0.0%	8	-6%	-5%	0.01	0.69	-40.9%	-12.3%	0.016	0.005
Ream Real Estate Company KSCP	0.067	-0.040	-37.38%	0.51	-2.7	3.3%	7	-20%	-24%	0.00	0.01	-19.0%	-10.1%	0.146	0.060
Investors Holding Group Company KSCP	0.013	0.000	0.00%	0.67	-0.6	0.0%	8	-1%	65%	0.01	0.90	-106.5%	0.0%	0.017	0.007
Al Massaleh Real Estate Co KSCP	0.029	0.000	0.00%	0.33	-4.0	0.0%	7	-2%	-21%	0.00	0.00	-8.1%	-2.3%	0.040	0.027
Kuwait Real Estate Holding Co KPSC	0.027	-0.002	-5.26%	0.04	0.7	6.6%	5	-5%	-6%	0.00	0.16	5.5%	2.3%	0.034	0.023
Kuwait Remal Real Estate Co KPSC	0.017	0.001	4.19%	0.26	-2.4	0.0%	5	4%	-29%	0.00	0.13	-11.0%	3.1%	0.033	0.013
Real Estate Trade Centers Company KPSC	0.034	0.000	0.00%	0.19	196.5	0.0%	4	3%	47%	0.00	0.00	0.1%	0.1%	0.050	0.018
Taameer Real Estate Investment Co KSCP	0.019	0.000	-0.52%	0.30	-4.2	0.0%	5	-1%	-28%	0.01	0.40	-7.0%	-5.4%	0.034	0.013
Al Masaken International Real Estate Develop	0.037	0.000	0.00%	0.40	44.2	0.5%	4	0%	-17%	0.00	0.00	0.9%	1.2%	0.074	0.027
Mena Real Estate Co KSCP	0.026	0.000	-0.76%	0.18	-58.2	0.0%	4	-3%	-38%	0.00	0.12	-0.3%	-0.1%	0.043	0.021
Sanam Real Estate Company KSCP	0.029	0.000	0.00%	0.36	38.6	0.0%	3	-5%	-29%	0.00	0.00	0.9%	0.9%	0.045	0.027
Ajwan Gulf Real Estate Co KSCP	0.012	0.000	0.00%	0.21	-8.4	0.0%	2	4%	-23%	0.03	2.27	-2.5%	-2.2%	0.016	0.009
Effect Real Estate Company KPSC	0.021	0.000	0.00%	0.29	-8.9	4.9%	2	0%	0%	0.00	0.00	-3.3%	-0.6%	0.026	0.020
Al Mudon International Real Estate Co KSCP	0.016	0.000	0.00%	0.12	-8.2	0.0%	2	0%	-35%	0.00	0.00	-1.5%	0.0%	0.029	0.015
<b>Total Real estate - 39 Companies</b>				<b>0.61</b>	<b>21.85</b>	<b>2.6%</b>	<b>1,866</b>				<b>1.29</b>	<b>13.81</b>			



Technology	Price			Valuation Multiples			MKT Cap	Price Performance		Trading Indicators		ROE	ROA	52 Week (KD)	
	Close (KD)	Day Δ	Day % Δ	PBV(X)	PE(X)	DY%		Mn KD	MTD(%)	YTD (%)	Value (Mn KD)			(Mn Shrs)	(%)
Automated Systems Company KPSC	0.061	-0.007	-9.71%	0.48	(59.56)	6.5%	6	-10%	-13%	0.01	0.22	-0.81%	-0.73%	0.086	0.051
<b>Total Technology - 1 Companies</b>				<b>0.48</b>	<b>(59.56)</b>	<b>6.5%</b>	<b>6</b>			<b>0.01</b>	<b>0.22</b>				

Telecom	Price			Valuation Multiples			MKT Cap	Price Performance		Trading Indicators		ROE	ROA	52 Week (KD)	
	Close (KD)	Day Δ	Day % Δ	PBV(X)	PE(X)	DY%		Mn KD	MTD(%)	YTD (%)	Value (Mn KD)			(Mn Shrs)	(%)
Mobile Telecommunications Company KSCP	0.563	0.000	0.00%	1.88	11.23	5.5%	2,436	2%	-6%	4.763	8.43	16.70%	8.33%	0.604	0.407
Kuwait Telecommunications Company KSCP	0.862	-0.003	-0.35%	2.00	9.87	4.1%	430	1%	9%	0.001	0.00	20.25%	12.02%	0.870	0.680
National Mobile Telecommunications Co KSCF	0.677	0.018	2.73%	0.59	11.26	9.5%	339	2%	-18%	0.404	0.60	5.27%	5.12%	0.835	0.560
AAN Digital Services Co KSCP	0.011	0.000	0.94%	0.32	35.19	0.0%	9	-8%	-21%	0.050	4.69	0.91%	1.01%	0.021	0.009
Hayat Communications Co KSCP	0.045	0.000	0.00%	0.38	18.94	0.0%	4	0%	-40%	-	-	2.01%	2.74%	0.098	0.025
<b>Telecom - 5 Companies</b>				<b>1.51</b>	<b>11.06</b>	<b>5.7%</b>	<b>3,219</b>			<b>5.2</b>	<b>13.7</b>				

<b>Total Market 174 Companies</b>							<b>29,484</b>		<b>-18%</b>	<b>41.2</b>	<b>212.3</b>	<b>7.94%</b>	<b>1.41%</b>		
-----------------------------------	--	--	--	--	--	--	---------------	--	-------------	-------------	--------------	--------------	--------------	--	--

### End of Report

The information contained in this document is proprietary to NIC and is for use only by the persons to whom it is issued.

This document is confidential and may not be distributed either in part or in whole without the express agreement of NIC. It is intended solely for the use of the individual or entity to whom it is addressed and others authorized to receive it.



شركة الاستثمار الوطنية  
NATIONAL INVESTMENTS COMPANY

Sharq, Al Mutanabi Street, Khaleejia Tower | P.O. Box 25667, Safat 13117, Kuwait

T.: +965 2226 6666 | Fax: +965 2226 6793 | [www.nic.com.kw](http://www.nic.com.kw)