

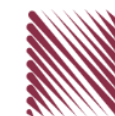
شركة الاستثمارات الوطنية  
NATIONAL INVESTMENTS COMPANY

**Boursa Kuwait – Daily Market Report**  
**MENA Securities – Research & Studies Dep.**

**Monday, September 7, 2020**

# DAILY MARKET COVERAGE REPORT

NIC MENA SECURITIES - RESEARCH AND STUDIES DEP



Index	Close	DTD Chg Net	DTD (%)	YTD (%)	52W High	52W Low	MKT CAP Bn (KD)	PBV (X)	PE (X)	DY (%)
All Share Index	5,294.71	0.01	0.00%	-15.7%	6,416.43	4,339.58	30.53	1.18	14.81	3.99%
Premier Index	5,807.89	-7.82	-0.13%	-16.7%	7,172.32	4,498.65	22.47	1.63	13.59	3.72%
Main Index	4,281.94	16.09	0.38%	-12.8%	4,932.47	3,965.63	8.06	0.67	19.80	4.74%

Index	Value Mn(KD)	Volume (Mn share)
All Share Index	34.81	290.41
Premier Index	24.08	83.54
Main Index	10.73	206.87

Market Breadth	UP	Down	No Chg
All Share Index	59	45	68
Premier Index	8	8	2
Main Index	51	37	66

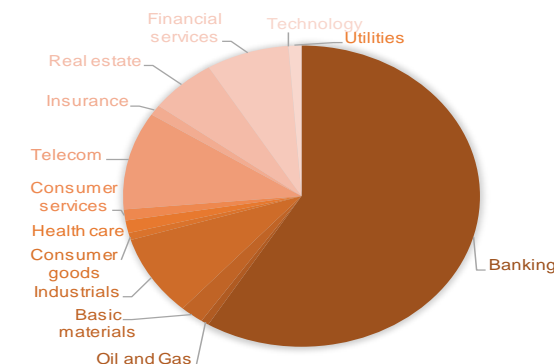
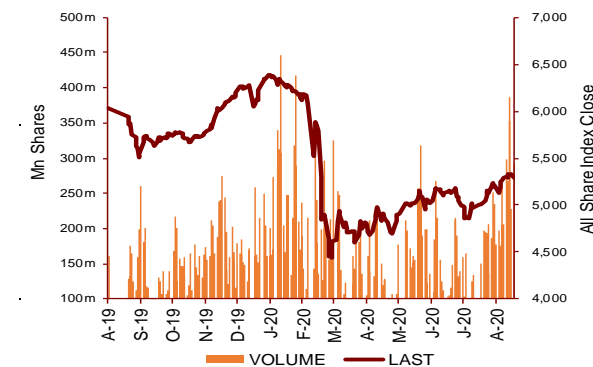
Today's Top 5 Gainer %	Close KD	Value KD	DTD (%)
Aayan Leasing and Investment	0.073	759,522	9.46%
Kuwait Portland Cement	0.800	96,454	8.55%
Sokouk Holding	0.027	49,306	7.91%
Burgan for Well Drilling Tradi	0.076	409	7.80%
Fujairah Cement Industries	0.035	7,203	6.15%

Today's Top 5 Loser %	Close KD	Value KD	DTD (%)
Hilal Cement	0.094	1,419	-17.63%
Gulf Franchising Holding	0.053	907	-9.59%
Automated Systems	0.067	1,441	-9.52%
Hayat Communications	0.070	930	-4.99%
Al Eid Food	0.065	17,300	-4.56%

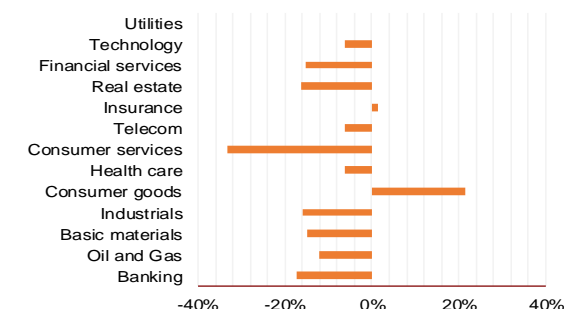
Today's Top 5 by Value	Close KD	DTD Chg	Trade Val Mn(KD)
Warba Bank	0.213	-1.84%	5.98
National Bank of Kuwait	0.853	0.12%	3.29
Ahli United Bank BSC	0.224	-1.32%	2.84
Kuwait Finance House	0.623	0.00%	2.19
Kuwait International Bank	0.177	1.14%	2.00

Top 5 by Volume	Close KD	DTD Chg	Trade Vol Mn(Shrs)
AAN Digital Services	0.012	2.63%	42.59
Arzan Financial Group for f	0.061	4.07%	28.48
Warba Bank	0.213	-1.84%	27.68
Gulf Petroleum Investment	0.021	0.96%	21.25
Ahli United Bank BSC	0.224	-1.32%	12.58

Sector	Close	DTD Chg Net	DTD (%)	YTD (%)	52W High	52W Low	MKT CAP Bn (KD)	PBV (X)	PE (X)	DY (%)
Banking	1,226.59	-1.160	-0.09%	-17.2%	1,536.8	986.4	17.94	1.51	14.95	3.5%
Oil and Gas	1,088.84	6.620	0.61%	-12.1%	1,372.2	985.7	0.22	0.79	25.49	5.6%
Basic materials	773.96	-0.530	-0.07%	-14.8%	1,026.5	561.7	0.65	0.93	14.23	7.8%
Industrials	778.32	3.360	0.43%	-16.0%	937.5	602.9	2.66	0.84	12.66	5.2%
Consumer goods	775.05	-18.260	-2.30%	21.6%	810.7	548.6	0.23	1.54	93.93	2.2%
Health care	829.21	0.000	0.00%	-6.3%	921.9	815.0	0.41	4.19	48.62	1.0%
Consumer services	715.78	-1.530	-0.21%	-33.2%	1,083.1	674.8	0.36	0.82	34.38	4.9%
Telecom	1,048.13	1.560	0.15%	-6.1%	1,116.7	802.2	3.21	1.51	11.03	5.7%
Insurance	967.45	-3.630	-0.37%	1.4%	988.8	901.0	0.34	0.73	8.21	6.0%
Real estate	883.54	0.500	0.06%	-16.4%	1,083.4	763.2	1.85	0.61	21.68	2.6%
Financial services	917.21	4.530	0.50%	-15.3%	1,097.0	801.4	2.29	0.66	15.82	4.6%
Technology	483.79	-50.920	-9.52%	-6.1%	625.7	371.0	0.01	0.52	-64.50	6.0%
Utilities	852.63	-10.530	-1.22%	0.0%	1,042.1	781.6	0.36	4.65	28.97	0.0%
							<b>30.53</b>	<b>1.18</b>	<b>14.81</b>	<b>3.99%</b>



YTD Sector Performance %



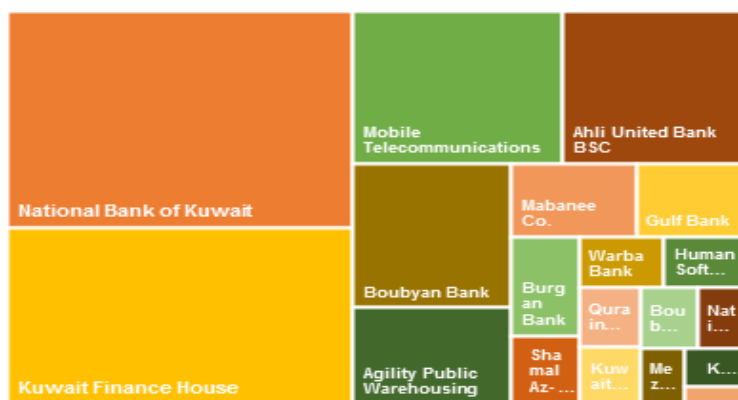
# DAILY MARKET COVERAGE REPORT

## NIC MENA SECURITIES - RESEARCH AND STUDIES DEP

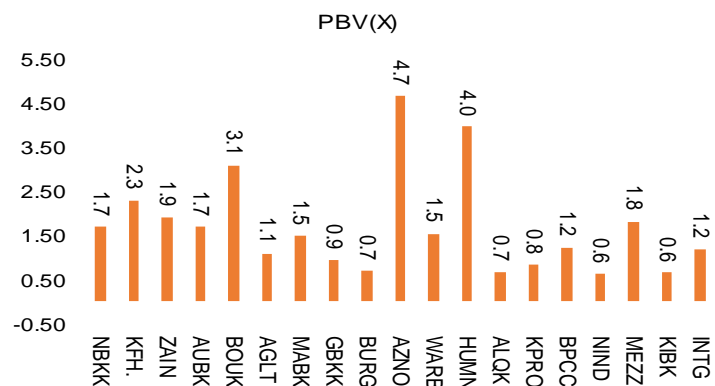


Premier Market	Price			Valuation Multiples			MKT Cap	Price Performance		Trading Indicators		ROE	ROA	52 Week (KD)	
	Close (KD)	Day Δ	Day % Δ	PBV(X)	PE(X)	DY%	Mn KD	MTD(%)	YTD (%)	Value (Mn KD)	(Mn Shrs)	(%)	(%)	High	Low
National Bank of Kuwait	0.853	0.001	0.12%	1.69	14.44	3.7%	5,793	-1%	-16%	3.29	3.87	11.7%	1.4%	1.062	0.654
Kuwait Finance House	0.623	0.000	0.00%	2.29	18.83	2.6%	4,728	0%	-15%	2.19	3.52	12.2%	1.3%	0.761	0.473
Mobile Telecommunications	0.572	0.001	0.18%	1.91	11.41	5.4%	2,475	-3%	-5%	1.83	3.19	16.7%	4.6%	0.604	0.407
Ahli United Bank BSC	0.224	-0.003	-1.32%	1.69	9.87	5.4%	2,162	-3%	-23%	2.84	12.58	17.1%	1.8%	0.311	0.160
Boubyan Bank	0.583	0.000	0.00%	3.07	28.18	1.1%	1,765	1%	-5%	0.21	0.36	10.9%	1.2%	0.638	0.380
Agility Public Warehousing	0.622	-0.001	-0.16%	1.08	13.72	2.9%	1,190	0%	-12%	0.32	0.52	7.9%	4.2%	0.748	0.357
Mabane Co.	0.633	-0.001	-0.16%	1.48	12.40	1.6%	700	0%	-26%	0.35	0.55	11.9%	5.8%	0.877	0.434
Gulf Bank	0.212	-0.001	-0.47%	0.93	9.67	4.7%	616	0%	-30%	1.83	8.59	9.6%	1.0%	0.317	0.180
Burgan Bank	0.198	-0.001	-0.50%	0.69	6.13	5.8%	519	1%	-35%	0.13	0.66	11.3%	1.2%	0.340	0.175
Shamal Az-Zour Al-Oula Power & Water	0.324	-0.004	-1.22%	4.65	28.97	0.0%	356	1%	0%	1.59	4.89	16.1%	2.3%	0.500	0.297
Warba Bank	0.213	-0.004	-1.84%	1.54	20.29	0.0%	335	8%	-18%	5.98	27.68	7.6%	0.5%	0.279	0.164
Human Soft Holding	2.619	0.005	0.19%	3.96	8.88	7.0%	319	3%	-13%	0.20	0.08	44.6%	30.3%	3.470	1.944
Qurain Petrochemical Industries	0.277	-0.001	-0.36%	0.67	10.02	5.5%	283	-3%	-11%	0.02	0.09	6.7%	3.6%	0.341	0.163
Kuwait Projects Company Holding	0.153	0.002	1.32%	0.82	9.24	6.1%	277	3%	-29%	0.13	0.86	8.9%	0.3%	0.231	0.147
Boubyan Petrochemical	0.541	0.001	0.19%	1.22	23.09	9.5%	273	1%	-19%	0.09	0.16	5.3%	2.1%	0.800	0.395
National Industries Group Holding	0.161	0.002	1.26%	0.61	4.96	6.7%	230	3%	-34%	0.51	3.17	12.3%	3.7%	0.247	0.121
Mezzan Holding	0.630	-0.020	-3.08%	1.82	34.04	2.7%	192	-3%	26%	0.07	0.10	5.3%	2.2%	0.665	0.428
Kuwait International Bank	0.177	0.002	1.14%	0.64	10.53	5.7%	180	3%	-32%	2.00	11.30	6.1%	0.6%	0.270	0.162
Integrated Holding	0.370	0.018	5.11%	1.19	10.31	10.8%	81	6%	-33%	0.50	1.38	11.5%	8.5%	0.600	0.342
<b>Total</b>				<b>1.63</b>	<b>13.59</b>	<b>3.72%</b>	<b>22,475</b>			<b>24.08</b>	<b>83.54</b>	<b>11.96%</b>	<b>1.55%</b>		

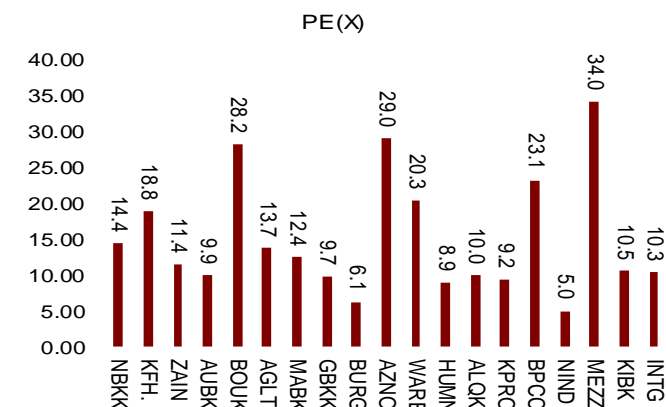
Market Capitalization



Price to Book Value

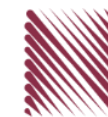


Price to Earning Value

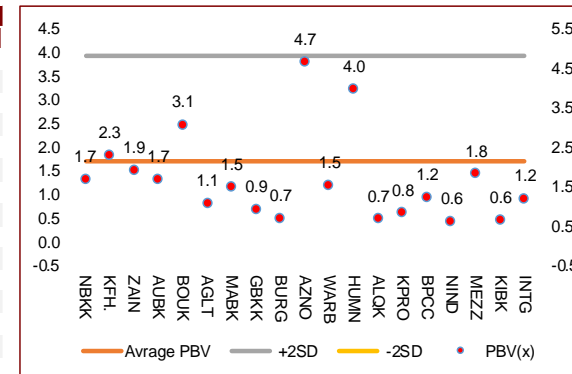


# DAILY MARKET COVERAGE REPORT

## NIC MENA SECURITIES - RESEARCH AND STUDIES DEP



Premier Market Company	Price			Valuation Multiples			MKT Cap Mn KD	Price Performance		ROE (%)	ROA (%)
	Close (KD)	Day Δ	Day % Δ	PBV(X)	PE (X)	DY%		MTD(%)	YTD (%)		
National Bank of Kuwait	0.853	0.001	0.12%	1.69	14.4	3.7%	5,793	-1%	-16%	11.7%	1.4%
Kuwait Finance House	0.623	0.000	0.00%	2.29	18.8	2.6%	4,728	0%	-15%	12.2%	1.3%
Mobile Telecommunications	0.572	0.001	0.18%	1.91	11.4	5.4%	2,475	-3%	-5%	16.7%	4.6%
Ahli United Bank BSC	0.224	-0.003	-1.32%	1.69	9.9	5.4%	2,162	-3%	-23%	17.1%	1.8%
Boubyan Bank	0.583	0.000	0.00%	3.07	28.2	1.1%	1,765	1%	-5%	10.9%	1.2%
Agility Public Warehousing	0.622	-0.001	-0.16%	1.08	13.7	2.9%	1,190	0%	-12%	7.9%	4.2%
Mabane Co.	0.633	-0.001	-0.16%	1.48	12.4	1.6%	700	0%	-26%	11.9%	5.8%
Gulf Bank	0.212	-0.001	-0.47%	0.93	9.7	4.7%	616	0%	-30%	9.6%	1.0%
Burgan Bank	0.198	-0.001	-0.50%	0.69	6.1	5.8%	519	1%	-35%	11.3%	1.2%
Shamal Az-Zour Al-Oula Power & Water	0.324	-0.004	-1.22%	4.65	29.0	0.0%	356	1%	0%	16.1%	2.3%
Warba Bank	0.213	-0.004	-1.84%	1.54	20.3	0.0%	335	8%	-18%	7.6%	0.5%
Human Soft Holding	2.619	0.005	0.19%	3.96	8.9	7.0%	319	3%	-13%	44.6%	30.3%
Qurain Petrochemical Industries	0.277	-0.001	-0.36%	0.67	10.0	5.5%	283	-3%	-11%	6.7%	3.6%
Kuwait Projects Company Holding	0.153	0.002	1.32%	0.82	9.2	6.1%	277	3%	-29%	8.9%	0.3%
Boubyan Petrochemical	0.541	0.001	0.19%	1.22	23.1	9.5%	273	1%	-19%	5.3%	2.1%
National Industries Group Holding	0.161	0.002	1.26%	0.61	5.0	6.7%	230	3%	-34%	12.3%	3.7%
Mezzan Holding	0.630	-0.020	-3.08%	1.82	34.0	2.7%	192	-3%	26%	5.3%	2.2%
Kuwait International Bank	0.177	0.002	1.14%	0.64	10.5	5.7%	180	3%	-32%	6.1%	0.6%
Integrated Holding	0.370	0.018	5.11%	1.19	10.3	10.8%	81	6%	-33%	11.5%	8.5%
<b>Total</b>				<b>1.63</b>	<b>13.59</b>	<b>3.72%</b>	<b>22,475</b>			<b>11.96%</b>	<b>1.55%</b>



Premier Market Discription	Price			Moving Average		RSI 14 Day	MKT Cap Mn KD	Price Performance		52 Week (KD)	
	Close (KD)	Day Δ	Day % Δ	50 Day	200 Day			MTD(%)	YTD (%)	High	Low
Premier Index	5,808	-7.820	-0.13%	5,611	5,917	67	22,475	0.037	-16.66%	7,172	4,499

### Top 5 Performrs (Today's Price Change)

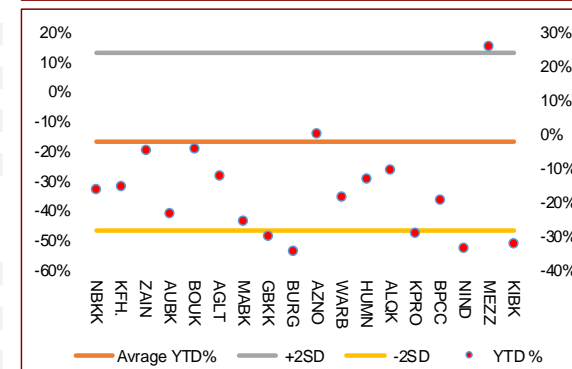
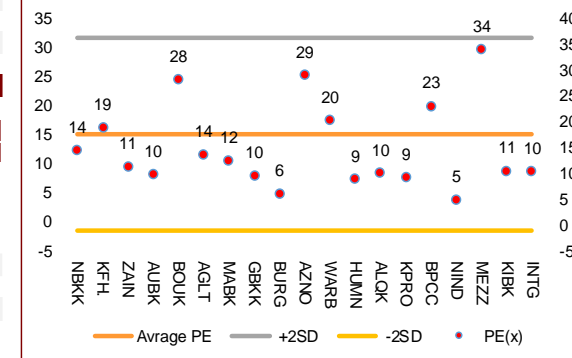
Integrated Holding	0.370	0.018	5.11%	0.386	0.457	29	81	6%	-33%	0.600	0.342
Kuwait Projects Company Holding	0.153	0.002	1.32%	0.156	0.183	65	277	3%	-29%	0.231	0.147
National Industries Group Holding	0.161	0.002	1.26%	0.160	0.190	50	230	3%	-34%	0.247	0.121
Kuwait International Bank	0.177	0.002	1.14%	0.172	0.210	64	180	3%	-32%	0.270	0.162
Human Soft Holding	2.619	0.005	0.19%	2.682	2.827	62	319	3%	-13%	3.470	1.944

### Middel Performrs (Today's Price Change)

Boubyan Petrochemical	0.541	0.001	0.19%	0.576	0.591	43	273	1%	-19%	0.800	0.395
Mobile Telecommunications	0.572	0.001	0.18%	0.564	0.547	54	2,475	-3%	-5%	0.604	0.407
National Bank of Kuwait	0.853	0.001	0.12%	0.815	0.855	73	5,793	-1%	-16%	1.062	0.654
Kuwait Finance House	0.623	0.000	0.00%	0.605	0.637	60	4,728	0%	-15%	0.761	0.473
Boubyan Bank	0.583	0.000	0.00%	0.541	0.538	73	1,765	1%	-5%	0.638	0.380
Agility Public Warehousing	0.622	-0.001	-0.16%	0.637	0.614	37	1,190	0%	-12%	0.748	0.357
Mabane Co.	0.633	-0.001	-0.16%	0.640	0.690	45	700	0%	-26%	0.877	0.434
Qurain Petrochemical Industries	0.277	-0.001	-0.36%	0.283	0.270	45	283	-3%	-11%	0.341	0.163
Gulf Bank	0.212	-0.001	-0.47%	0.207	0.242	69	616	0%	-30%	0.317	0.180

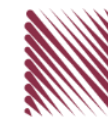
### Bottom 5 Performrs (Today's Price Change)

Mezzan Holding	0.630	-0.020	-3.08%	0.604	0.551	72	192	-3%	26%	0.665	0.428
Warba Bank	0.213	-0.004	-1.84%	0.201	0.222	43	335	8%	-18%	0.279	0.164
Ahli United Bank BSC	0.224	-0.003	-1.32%	0.198	0.229	79	2,162	-3%	-23%	0.311	0.160
Shamal Az-Zour Al-Oula Power & Water	0.324	-0.004	-1.22%	0.093	0.023	29	356	1%	0%	0.500	0.297
Burgan Bank	0.198	-0.001	-0.50%	0.192	0.239	71	519	1%	-35%	0.340	0.175



# DAILY MARKET COVERAGE REPORT

## NIC MENA SECURITIES - RESEARCH AND STUDIES DEP



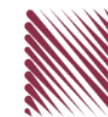
Banking Sector	Price			Valuation Multiples			MKT Cap	Price Performance		Trading Indicators		ROE	ROA	52 Week (KD)	
	Company	Close (KD)	Day Δ	Day % Δ	PBV(X)	PE(X)		DY%	Mn KD	MTD(%)	YTD (%)			Value (Mn KD)	(Mn Shrs)
National Bank of Kuwait	0.853	0.001	0.12%	1.69	14.44	3.7%	5,793	-1%	-16%	3.29	3.87	11.7%	1.4%	1.062	0.654
Kuwait Finance House	0.623	0.000	0.00%	2.29	18.83	2.6%	4,728	0%	-15%	2.19	3.52	12.2%	1.3%	0.761	0.473
Ahli United Bank BSC	0.224	-0.003	-1.32%	1.69	9.87	5.4%	2,162	-3%	-23%	2.84	12.58	17.1%	1.8%	0.311	0.160
Boubyan Bank	0.583	0.000	0.00%	3.07	28.18	1.1%	1,765	1%	-5%	0.21	0.36	10.9%	1.2%	0.638	0.380
Commercial Bank of Kuwait	0.500	0.000	0.00%	1.32	0.00	3.7%	965	0%	-5%	0.00	0.00	0.0%	0.0%	0.555	0.465
Gulf Bank	0.212	-0.001	-0.47%	0.93	9.67	4.7%	616	0%	-30%	1.83	8.59	9.6%	1.0%	0.317	0.180
Burgan Bank	0.198	-0.001	-0.50%	0.69	6.13	5.8%	519	1%	-35%	0.13	0.66	11.3%	1.2%	0.340	0.175
Ahli United Bank	0.270	0.006	2.27%	1.16	9.57	5.0%	527	4%	-17%	0.28	1.03	12.1%	1.3%	0.330	0.225
Warba Bank	0.213	-0.004	-1.84%	1.54	20.29	0.0%	335	8%	-18%	5.98	27.68	7.6%	0.5%	0.279	0.164
Al Ahli Bank of Kuwait	0.176	0.002	1.15%	0.51	9.86	8.0%	283	3%	-31%	0.11	0.61	5.1%	0.6%	0.320	0.156
Kuwait International Bank	0.177	0.002	1.14%	0.64	10.53	5.7%	180	3%	-32%	2.00	11.30	6.1%	0.6%	0.270	0.162
Ithmaar Holding	0.022	0.000	0.00%	0.08	323.35	0.0%	65	0%	0%	0.00	0.00	0.0%	0.0%	0.022	0.022
<b>Total Banking Sector - 12 Companies</b>				<b>1.51</b>	<b>14.95</b>	<b>3.5%</b>	<b>17,938</b>			<b>18.85</b>	<b>70.20</b>	<b>10.13%</b>	<b>1.18%</b>		

Basic materials	Price			Valuation Multiples			MKT Cap	Price Performance		Trading Indicators		ROE	ROA	52 Week (KD)	
	Company	Close (KD)	Day Δ	Day % Δ	PBV(X)	PE(X)		DY%	Mn KD	MTD(%)	YTD (%)			Value (Mn KD)	(Mn Shrs)
Boubyan Petrochemical	0.541	0.001	0.19%	1.22	23.09	9.5%	273	1%	-19%	0.09	0.16	5.3%	2.1%	0.800	0.395
Qurain Petrochemical Industries	0.277	-0.001	-0.36%	0.67	10.02	5.5%	283	-3%	-11%	0.02	0.09	6.7%	3.6%	0.341	0.163
Al Kout Industrial Projects	0.769	0.000	0.00%	2.50	16.21	6.5%	78	0%	-10%	0.00	0.00	15.4%	11.3%	0.850	0.769
Kuwait Foundry	0.240	0.001	0.42%	0.80	19.40	22.2%	17	0%	-28%	0.01	0.05	4.1%	3.8%	0.564	0.192
<b>Total Basic materials - 4 Companies</b>				<b>0.93</b>	<b>14.23</b>	<b>7.8%</b>	<b>651</b>			<b>0.13</b>	<b>0.30</b>	<b>6.57%</b>	<b>5.07%</b>		

Consumer goods	Price			Valuation Multiples			MKT Cap	Price Performance		Trading Indicators		ROE	ROA	52 Week (KD)	
	Company	Close (KD)	Day Δ	Day % Δ	PBV(X)	PE(X)		DY%	Mn KD	MTD(%)	YTD (%)			Value (Mn KD)	(Mn Shrs)
Mezzan Holding	0.630	-0.020	-3.08%	1.82	34.04	2.7%	192	-3%	26%	0.07	0.10	5.3%	2.2%	0.665	0.428
Livestock Transport and Trading	0.185	0.003	1.65%	0.96	32.97	0.1%	39	0%	6%	0.01	0.05	2.9%	2.0%	0.200	0.152
Danah Al Safat Foodstuff	0.012	0.000	0.00%	0.25	(0.30)	0.1%	1	0%	-25%	0.00	0.00	-84.8%	-43.2%	0.029	0.010
<b>Total Basic materials - 3 Companies</b>				<b>1.54</b>	<b>93.93</b>	<b>2.2%</b>	<b>232</b>			<b>0.08</b>	<b>0.15</b>	<b>1.64%</b>	<b>0.90%</b>		

# DAILY MARKET COVERAGE REPORT

## NIC MENA SECURITIES - RESEARCH AND STUDIES DEP



Consumer services		Price			Valuation Multiples			MKT Cap	Price Performance		Trading Indicators		ROE	ROA	52 Week (KD)	
Company	Close (KD)	Day Δ	Day % Δ	PBV(X)	PE(X)	DY%	Mn KD	MTD(%)	YTD (%)	Value (Mn KD)	(Mn Shrs)	(%)	(%)	High	Low	
Jazeera Airways	0.569	-0.002	-0.35%	2.83	7.62	6.2%	114	2%	-48%	0.23	0.39	37.1%	9.0%	1.110	0.372	
Kuwait National Cinema	0.649	0.001	0.15%	0.75	7.02	7.4%	60	-3%	-38%	0.00	0.01	10.6%	7.2%	1.050	0.600	
Al Soor Fuel Marketing	0.110	0.000	0.00%	0.68	12.87	4.5%	45	0%	-12%	0.00	0.03	5.3%	3.7%	0.129	0.096	
Oula Fuel Marketing	0.109	0.000	0.00%	0.65	11.41	5.4%	44	-2%	-14%	0.01	0.08	5.7%	3.2%	0.134	0.095	
Sultan Center Food Products	0.055	0.000	0.00%	0.68	13.84	0.0%	31	0%	6%	0.00	0.00	4.9%	0.7%	0.060	0.036	
IFA Hotels and Resorts	0.024	0.000	-1.25%	0.85	(0.65)	0.0%	15	-4%	-57%	0.01	0.34	-131.5%	-8.1%	0.062	0.021	
Jiyad Holding	0.036	0.000	0.56%	0.32	7.22	0.0%	13	11%	-7%	0.01	0.15	4.5%	2.8%	0.047	0.029	
Kuwait Resorts	0.047	0.000	0.85%	0.32	8.61	0.0%	9	3%	-18%	0.03	0.61	3.8%	3.2%	0.060	0.038	
Future Kid Entertainment and Real Estate	0.077	0.000	0.00%	0.44	28.90	15.1%	8	0%	-13%	0.00	0.00	1.5%	0.9%	0.110	0.069	
Al Eid Food	0.065	-0.003	-4.56%	0.36	4.32	0.0%	7	-3%	-18%	0.02	0.27	8.4%	6.1%	0.096	0.046	
Alrai Media Group	0.037	0.000	0.00%	0.83	(2.41)	0.0%	9	0%	-2%	0.00	0.00	-34.2%	-20.0%	0.049	0.030	
Kuwait Hotels	0.088	-0.002	-2.45%	1.23	(5.05)	0.0%	5	0%	-12%	0.00	0.00	-24.4%	-13.2%	0.101	0.069	
Palms Agro Production	0.061	0.000	0.00%	0.51	(43.00)	16.3%	3	8%	52%	0.00	0.00	-1.2%	-0.9%	0.062	0.025	
Kuwait Cable Vision	0.014	0.000	0.00%	0.52	(11.65)	0.0%	1	0%	0%	0.00	0.00	-4.5%	-3.0%	0.026	0.012	
<b>Total Consumer services - 14 Companies</b>				<b>0.82</b>	<b>34.38</b>	<b>4.9%</b>	<b>362</b>			<b>0.30</b>	<b>1.87</b>	<b>2.38%</b>	<b>2.72%</b>			

Financial services		Price			Valuation Multiples			MKT Cap	Price Performance		Trading Indicators		ROE	ROA	52 Week (KD)	
Company	Close (KD)	Day Δ	Day % Δ	PBV(X)	PE(X)	DY%	Mn KD	MTD(%)	YTD (%)	Value (Mn KD)	(Mn Shrs)	(%)	(%)	High	Low	
Egypt Kuwait Holding	0.374	0.000	0.00%	2.22	12.63	5.2%	383	0%	-17%	0.00	0.00	17.6%	7.1%	0.500	0.318	
Kuwait Projects Company Holding	0.153	0.002	1.32%	0.82	9.24	6.1%	277	3%	-29%	0.13	0.86	8.9%	0.3%	0.231	0.147	
National Industries Group Holding	0.161	0.002	1.26%	0.61	4.96	6.7%	230	3%	-34%	0.51	3.17	12.3%	3.7%	0.247	0.121	
GFH Financial Group	0.051	-0.002	-3.21%	0.56	6.98	5.6%	173	2%	-25%	0.07	1.39	8.0%	1.3%	0.075	0.042	
Alimtiiaz Investment Group	0.088	0.000	-0.23%	0.42	4.59	9.0%	91	3%	-30%	0.27	3.11	9.1%	5.2%	0.137	0.071	
Commercial Facilities	0.181	0.000	0.00%	0.56	6.97	9.3%	92	-2%	-17%	0.00	0.00	8.0%	4.2%	0.235	0.179	
National Investments	0.143	0.006	4.38%	0.63	10.64	5.7%	114	20%	4%	1.38	9.64	5.9%	5.0%	0.155	0.080	
Tamdeen Investment	0.353	0.000	0.00%	0.43	14.64	3.4%	121	42%	2%	0.02	0.06	3.0%	2.2%	0.400	0.199	
Kuwait Investment	0.123	0.001	0.82%	0.54	3.85	8.2%	67	9%	-18%	0.14	1.09	13.9%	6.0%	0.172	0.095	
Noor Financial Investment	0.167	0.001	0.60%	1.02	8.17	3.0%	66	3%	40%	0.05	0.28	12.5%	7.5%	0.184	0.076	
Al Bareeq Holding	0.102	0.000	0.00%	1.07	20.37	0.0%	45	-3%	2%	0.00	0.00	5.2%	5.0%	0.110	0.100	

# DAILY MARKET COVERAGE REPORT

## NIC MENA SECURITIES - RESEARCH AND STUDIES DEP



Financial services	Price			Valuation Multiples			MKT Cap	Price Performance		Trading Indicators		ROE	ROA	52 Week (KD)		
	Company	Close (KD)	Day Δ	Day % Δ	PBV(X)	PE(X)	DY%	Mn KD	MTD(%)	YTD (%)	Value (Mn KD)	(Mn Shrs)	(%)	(%)	High	Low
Kuwait Financial Centre	0.081	0.002	1.89%	0.41	5.55	6.1%	39	0%	-24%	0.02	0.21	7.3%	3.5%	0.121	0.070	
Aayan Leasing and Investment	0.073	0.006	9.46%	0.85	(4.00)	2.5%	58	18%	49%	0.76	11.01	-21.4%	-4.9%	0.070	0.032	
Arabi Group Holdings	0.198	0.000	0.00%	1.07	(19.90)	0.0%	33	0%	-28%	0.00	0.00	-5.4%	-0.6%	0.337	0.076	
Arzan Financial Group for Financing and Invest	0.061	0.002	4.07%	0.50	44.64	0.0%	49	5%	159%	1.76	28.48	1.1%	0.7%	0.064	0.022	
Privatization Holding	0.042	0.000	0.00%	0.31	(37.78)	0.0%	26	0%	-15%	0.00	0.00	-0.8%	-0.5%	0.059	0.037	
Asiya Capital Investments	0.031	-0.001	-2.81%	0.33	16.03	0.2%	24	4%	-21%	0.01	0.29	2.1%	2.0%	0.041	0.029	
KAMCO Investment	0.069	-0.001	-1.86%	0.42	7.73	0.0%	23	-2%	-24%	0.02	0.27	5.4%	2.3%	0.111	0.060	
Kuwait and Middle East Financial Investment	0.130	0.000	0.00%	2.11	51.92	0.0%	34	13%	45%	0.09	0.73	4.1%	3.2%	0.125	0.063	
Umm Al Qaiwain General Investment Co	0.096	0.000	0.00%	0.64	18.04	3.8%	35	8%	44%	0.00	0.00	3.6%	3.3%	0.096	0.052	
Securities House	0.043	-0.001	-1.83%	0.59	(62.86)	0.0%	24	7%	-5%	0.23	5.22	-0.9%	-0.7%	0.050	0.027	
Gulf Investment House	0.096	0.001	1.05%	1.08	177.57	0.0%	39	3%	49%	0.09	1.00	0.6%	0.5%	0.099	0.038	
Coast Investment and Development	0.034	-0.001	-1.45%	0.36	33.88	0.0%	20	-2%	-17%	0.02	0.72	1.1%	1.0%	0.045	0.026	
Bayan Investment	0.048	0.000	0.42%	0.48	(24.65)	0.0%	17	0%	25%	0.00	0.01	-1.9%	-0.8%	0.053	0.031	
First Investment	0.029	0.000	0.00%	0.44	(0.39)	0.0%	19	-5%	-17%	0.01	0.39	-113.6%	-62.0%	0.045	0.022	
Al Madar Finance and Investment	0.087	0.000	0.46%	0.79	13.01	0.0%	18	2%	-6%	0.02	0.23	6.1%	5.0%	0.148	0.062	
Inovent BSC Public	0.067	-0.001	-0.74%	0.47	8.99	8.8%	20	19%	5%	0.02	0.22	5.2%	2.9%	0.072	0.044	
Al Manar Financing and Leasing	0.046	0.000	0.00%	0.42	11.86	1.1%	14	-1%	-11%	0.00	0.00	3.5%	2.7%	0.060	0.037	
Osoul Investment	0.081	-0.002	-1.83%	0.61	6.76	0.0%	12	-4%	7%	0.02	0.21	9.0%	8.2%	0.121	0.070	
National International Holding	0.070	-0.002	-3.06%	0.37	8.40	4.2%	15	15%	-5%	0.00	0.00	4.4%	3.3%	0.081	0.049	
Kuwait Finance and Investment	0.044	0.000	0.00%	0.35	19.89	0.0%	14	-2%	-11%	0.00	0.00	1.8%	1.2%	0.058	0.038	
Manazel Holding	0.032	-0.001	-1.54%	0.70	20.57	0.0%	14	-3%	-18%	0.05	1.54	3.4%	0.8%	0.048	0.021	
Amar Finance and Leasing	0.049	0.000	0.00%	0.55	41.36	0.0%	10	-4%	30%	0.00	0.00	1.3%	1.2%	0.064	0.037	
UniCap Investment and Finance	0.042	0.000	-0.24%	0.42	(21.02)	0.0%	10	13%	-24%	0.04	0.90	-2.0%	-1.0%	0.057	0.035	
Gulf North Africa Holding	0.056	0.000	0.54%	0.74	71.76	0.0%	8	0%	-10%	0.00	0.01	1.0%	0.6%	0.062	0.052	
International Financial Advisors	0.031	0.000	0.00%	0.93	(0.42)	2.1%	8	0%	-42%	0.00	0.00	-222.8%	-19.3%	0.060	0.027	
Kuwait Syrian Holding Co	0.027	0.000	-1.11%	0.23	(13.64)	0.0%	5	1%	-15%	0.03	1.00	-1.7%	-1.1%	0.043	0.022	
Amwal International Investment	0.034	0.000	0.00%	0.64	12.68	0.0%	6	-5%	14%	0.00	0.00	5.0%	2.6%	0.055	0.030	
Al Salam Group Holding	0.025	0.001	2.46%	0.22	188.73	0.0%	7	8%	-15%	0.23	9.13	0.1%	0.1%	0.038	0.018	
Warba Capital Holding	0.047	0.000	0.00%	0.53	(7.53)	0.0%	5	-5%	-27%	0.00	0.00	-7.0%	-6.2%	0.115	0.045	
Credit Rating and Collection	0.035	0.000	0.00%	1.08	(23.69)	0.0%	6	0%	76%	0.00	0.00	-4.6%	-4.3%	0.037	0.019	
National Consumer Holding	0.052	0.000	0.00%	0.58	256.31	0.0%	5	-5%	-5%	0.00	0.00	0.2%	0.2%	0.100	0.010	
Al Madina for Finance and Investment	0.012	0.000	2.50%	0.41	(2.31)	0.0%	5	15%	-18%	0.03	2.79	-17.9%	-7.7%	0.019	0.009	
Ektitab Holding	0.015	0.001	4.11%	0.37	(10.70)	0.0%	5	16%	-1%	0.10	6.29	-3.4%	-3.0%	0.017	0.010	
Al Deera Holding	0.016	0.000	0.00%	0.70	(9.02)	0.0%	3	0%	-20%	0.00	0.00	-7.7%	-1.7%	0.022	0.011	
Al Mal Investment Company	0.009	0.000	-1.08%	0.41	(0.86)	0.0%	3	2%	-7%	0.01	1.27	-47.6%	-23.3%	0.016	0.008	
Gulf Franchising Holding	0.053	-0.006	-9.59%	0.83	(2.29)	0.0%	2	-10%	-30%	0.00	0.02	-36.2%	-10.8%	0.160	0.001	
Tamkeen Holding	0.005	0.000	0.00%	0.05	(7.18)	0.0%	0	0%	0%	0.00	0.00	-0.7%	-0.7%	0.005	0.005	
<b>Total Financial services - 48 Companies</b>				<b>0.66</b>	<b>15.82</b>	<b>4.6%</b>	<b>2,291</b>				<b>6.13</b>	<b>91.54</b>	<b>4.18%</b>	<b>4.11%</b>		

# DAILY MARKET COVERAGE REPORT

## NIC MENA SECURITIES - RESEARCH AND STUDIES DEP



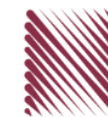
Health care	Price			Valuation Multiples			MKT Cap	Price Performance		Trading Indicators		ROE	ROA	52 Week (KD)	
Company	Close (KD)	Day Δ	Day % Δ	PBV(X)	PE(X)	DY%	Mn KD	MTD(%)	YTD (%)	Value (Mn KD)	(Mn Shrs)	(%)	(%)	High	Low
Al-Maidan Clinic for Oral Health Services	1.220	0.000	0.00%	7.90	47.78	0.6%	305	0%	0%	0.00	0.00	16.5%	10.9%	1.240	1.220
Advanced Technology	0.627	0.000	0.00%	1.63	51.04	2.4%	94	0%	-23%	0.00	0.00	3.2%	0.7%	0.930	0.580
Yiaco Medical	0.707	0.000	0.00%	6.06	52.72	0.0%	12	0%	0%	0.00	0.00	11.5%	0.6%	0.707	0.707
<b>Total Health care - 3 Companies</b>				<b>4.19</b>	<b>48.62</b>	<b>1.0%</b>	<b>411</b>			<b>0.00</b>	<b>0.00</b>	<b>8.61%</b>	<b>4.68%</b>		

Industrials	Price			Valuation Multiples			MKT Cap	Price Performance		Trading Indicators		ROE	ROA	52 Week (KD)	
Company	Close (KD)	Day Δ	Day % Δ	PBV(X)	PE(X)	DY%	Mn KD	MTD(%)	YTD (%)	Value (Mn KD)	(Mn Shrs)	(%)	(%)	High	Low
Agility Public Warehousing	0.622	-0.001	-0.16%	1.08	13.72	2.9%	1,190	0%	-12%	0.32	0.52	7.9%	4.2%	0.748	0.357
Human Soft Holding	2.619	0.005	0.19%	3.96	8.88	7.0%	319	3%	-13%	0.20	0.08	44.6%	30.3%	3.470	1.944
ALAFCO Aviation Lease and Finance	0.158	0.000	0.00%	0.47	8.50	6.3%	150	0%	-42%	0.12	0.74	5.5%	1.4%	0.278	0.138
Kuwait Cement	0.174	0.000	0.00%	0.59	30.88	8.5%	124	0%	-29%	0.08	0.46	1.9%	1.3%	0.271	0.144
Gulf Cable and Electrical Industries	0.733	0.021	2.95%	0.88	36.35	3.7%	154	14%	50%	1.24	1.71	2.4%	2.2%	0.698	0.390
Integrated Holding	0.370	0.018	5.11%	1.19	10.31	10.8%	81	6%	-33%	0.50	1.38	11.5%	8.5%	0.600	0.342
Kuwait Portland Cement	0.800	0.063	8.55%	1.07	10.57	12.3%	80	10%	-19%	0.10	0.13	10.2%	8.2%	1.210	0.683
United Projects for Aviation Services	0.465	0.000	0.00%	0.98	7.96	4.5%	74	0%	-9%	0.00	0.00	12.3%	7.8%	0.512	0.367
Heavy Engineering Industries and Shipbuilding	0.368	-0.002	-0.54%	1.06	5.91	7.9%	66	1%	-9%	0.06	0.17	18.0%	5.9%	0.419	0.298
Educational Holding Group	0.299	0.000	0.00%	1.73	9.47	5.0%	73	0%	-32%	0.00	0.00	18.3%	16.7%	0.475	0.228
National Industries	0.156	-0.001	-0.64%	0.65	12.71	6.3%	55	-5%	-5%	0.00	0.00	5.1%	3.8%	0.180	0.143
ACICO Industries	0.099	0.000	0.00%	0.32	12.89	5.0%	33	5%	-26%	0.00	0.00	2.5%	0.6%	0.145	0.081
Kuwait Company for Process Plant Constructi	0.318	0.007	2.25%	1.26	6.81	5.6%	34	2%	32%	0.29	0.91	18.5%	7.7%	0.337	0.175
Ras Al Khaimah for White Cement and Constr	0.065	0.000	0.00%	0.51	19.94	8.4%	33	0%	0%	0.00	0.00	2.6%	2.0%	0.080	0.053
Gulf Cement	0.035	0.000	0.58%	0.34	(12.58)	12.0%	28	15%	-37%	0.01	0.31	-2.7%	-2.2%	0.063	0.029
Combined Group Contracting	0.158	0.002	1.28%	0.55	7.12	13.0%	26	2%	-36%	0.21	1.34	7.7%	1.2%	0.251	0.138
Sharjah Cement and Industrial Development	0.042	0.000	0.00%	0.21	25.32	12.4%	26	0%	0%	0.00	0.00	0.8%	0.6%	0.066	0.042
KGL Logistics	0.025	0.000	-1.57%	0.19	4.08	0.1%	19	1%	-33%	0.03	1.15	4.6%	2.9%	0.043	0.023
Fujairah Cement Industries	0.035	0.002	6.15%	0.14	16.73	12.2%	12	10%	-23%	0.01	0.21	0.8%	0.4%	0.053	0.029
Shuaiba Industrial	0.130	0.005	4.00%	0.72	40.15	7.6%	13	5%	-16%	0.01	0.06	1.8%	1.4%	0.180	0.122
Kuwait and Gulf Link Transport	0.045	-0.001	-2.59%	0.19	13.67	0.0%	12	0%	-32%	0.02	0.37	1.4%	0.4%	0.080	0.042
National Cleaning	0.053	-0.002	-3.45%	0.31	7.11	9.5%	11	2%	-23%	0.01	0.14	4.4%	1.5%	0.088	0.047
Mubarrad Holding	0.059	-0.002	-3.30%	0.46	9.45	8.0%	10	6%	-33%	0.01	0.11	4.9%	4.1%	0.089	0.049
Specialities Group Holding	0.066	0.000	0.61%	0.32	7.13	0.0%	9	0%	-22%	0.04	0.54	4.5%	3.5%	0.086	0.055
Hilal Cement	0.094	-0.020	-17.63%	0.82	(7.72)	16.0%	10	-18%	-6%	0.00	0.01	-10.6%	-6.2%	0.126	0.063
National Ranges	0.015	-0.001	-4.52%	0.27	(1.08)	0.0%	4	-7%	48%	0.01	0.44	-24.9%	-5.3%	0.018	0.007
Metal and Recycling	0.041	0.000	0.00%	0.34	(1.74)	0.0%	4	-6%	-18%	0.00	0.05	-19.7%	-10.1%	0.070	0.020
Salbookh Trading	0.031	-0.001	-1.61%	0.41	(1.78)	0.0%	3	11%	-39%	0.00	0.12	-23.2%	-15.9%	0.051	0.026
Equipment Holding	0.017	0.000	1.83%	0.33	(192.84)	0.0%	2	14%	-23%	0.03	1.70	-0.2%	-0.1%	0.024	0.013
<b>Total Industrials - 29 Companies</b>				<b>0.84</b>	<b>12.66</b>	<b>5.2%</b>	<b>2,656</b>			<b>3.29</b>	<b>12.65</b>	<b>6.67%</b>	<b>5.05%</b>		



# DAILY MARKET COVERAGE REPORT

NIC MENA SECURITIES - RESEARCH AND STUDIES DEP



Insurance	Price			Valuation Multiples			MKT Cap	Price Performance		Trading Indicators		ROE	ROA	52 Week (KD)	
	Company	Close (KD)	Day Δ	Day % Δ	PBV(X)	PE(X)		DY%	Mn KD	MTD(%)	YTD (%)			Value (Mn KD)	(Mn Shrs)
Gulf Insurance Group	0.565	-0.005	-0.88%	0.97	7.88	6.6%	105	-8%	-14%	0.00	0.00	12.3%	1.7%	0.687	0.550
Al Ahleia Insurance	0.400	0.000	0.00%	0.76	8.06	8.4%	83	5%	-2%	0.01	0.02	9.4%	3.3%	0.424	0.367
Kuwait Insurance	0.370	-0.004	-1.07%	0.61	7.17	6.4%	68	6%	12%	0.00	0.00	8.5%	4.6%	0.387	0.300
Kuwait Reinsurance	0.200	0.000	0.00%	0.76	8.56	2.2%	40	3%	45%	0.00	0.00	8.9%	3.2%	0.200	0.126
Bahrain Kuwait Insurance	0.200	0.000	0.00%	0.93	12.87	6.1%	28	0%	0%	0.00	0.00	7.2%	1.1%	0.200	0.200
Warba Insurance	0.077	0.002	2.67%	0.34	10.93	0.0%	13	-2%	27%	0.00	0.00	3.1%	1.0%	0.094	0.051
First Takaful Insurance	0.040	0.000	0.00%	0.49	5.07	0.0%	4	0%	5%	0.00	0.02	9.6%	5.9%	0.056	0.031
Wethaq Takaful Insurance	0.024	0.000	0.84%	0.22	(30.37)	0.0%	3	0%	-4%	0.00	0.02	-0.7%	-0.7%	0.035	0.018
<b>Total Insurance - 8 Companies</b>				<b>0.73</b>	<b>8.21</b>	<b>6.0%</b>	<b>345</b>			<b>0.01</b>	<b>0.06</b>	<b>8.86%</b>	<b>3.00%</b>		

Oil and Gas	Price			Valuation Multipels			MKT Cap	Price Performance		Trading Indicators		ROE	ROA	52 Week (KD)	
	Company	Close (KD)	Day Δ	Day % Δ	PBV(X)	PE(X)		DY%	Mn KD	MTD(%)	YTD (%)			Value (Mn KD)	(Mn Shrs)
Burgan for Well Drilling Trading and Maintenanc	0.076	0.006	7.80%	0.28	7.72	0.0%	17	11%	-5%	0.00	0.01	3.6%	1.1%	0.098	0.060
Energy House Holding	0.022	0.000	0.00%	0.68	(3.00)	0.0%	16	10%	-4%	0.01	0.34	-22.5%	-17.0%	0.036	0.014
Gulf Petroleum Investment	0.021	0.000	0.96%	0.23	(6.77)	0.0%	10	9%	4%	0.45	21.25	-3.4%	-2.3%	0.025	0.012
Independent Petroleum Group	0.430	0.000	0.00%	0.79	11.72	7.0%	78	-4%	-11%	0.00	0.00	6.8%	2.2%	0.497	0.375
National Petroleum Services	0.980	0.000	0.00%	2.33	8.36	7.1%	95	-2%	-16%	0.00	0.00	27.9%	23.6%	1.389	0.903
Senergy Holding	0.017	0.000	-0.60%	0.33	(0.69)	0.0%	3	2%	-24%	0.02	1.24	-47.9%	-30.4%	0.027	0.014
<b>Total Oil and Gas - 6 Companies</b>				<b>0.79</b>	<b>25.49</b>	<b>5.6%</b>	<b>220</b>			<b>0.48</b>	<b>22.84</b>	<b>3.10%</b>	<b>2.18%</b>		

Real estate	Price			Valuation Multiples			MKT Cap	Price Performance		Trading Indicators		ROE	ROA	52 Week (KD)	
	Company	Close (KD)	Day Δ	Day % Δ	PBV(X)	PE(X)		DY%	Mn KD	MTD(%)	YTD (%)			Value (Mn KD)	(Mn Shrs)
Mabane Co.	0.633	-0.001	-0.16%	1.48	12.40	1.6%	700	0%	-26%	0.35	0.55	11.9%	5.8%	0.877	0.434
Salhia Real Estate	0.400	0.001	0.25%	1.21	9.19	5.0%	198	1%	-4%	0.02	0.05	13.2%	5.8%	0.460	0.324
Commercial Real Estate	0.096	-0.002	-1.94%	0.59	11.89	6.0%	173	3%	5%	0.06	0.65	5.0%	2.7%	0.103	0.083
Tamdeen Real Estate	0.251	0.000	0.00%	0.36	12.25	4.0%	101	0%	-22%	0.00	0.00	3.0%	2.2%	0.343	0.248
National Real Estate	0.071	-0.001	-1.25%	0.37	8.91	0.0%	102	3%	-17%	0.04	0.50	4.2%	2.4%	0.090	0.058
Kuwait Real Estate	0.097	0.003	3.21%	0.68	12.26	0.4%	86	3%	-8%	0.28	2.93	5.5%	2.2%	0.115	0.070
United Real Estate	0.051	0.000	0.00%	0.29	(7.59)	0.0%	55	2%	-17%	0.00	0.00	-3.9%	-1.2%	0.063	0.045
First Dubai for Real Estate Development	0.039	0.000	0.78%	0.52	42.55	1.0%	39	2%	9%	0.03	0.71	1.2%	1.0%	0.055	0.027

# DAILY MARKET COVERAGE REPORT

NIC MENA SECURITIES - RESEARCH AND STUDIES DEP



Real estate Company	Price			Valuation Multiples			MKT Cap	Price Performance		Trading Indicators		ROE	ROA	52 Week (KD)	
	Close (KD)	Day Δ	Day % Δ	PBV(X)	PE(X)	DY%	Mn KD	MTD(%)	YTD (%)	Value (Mn KD)	(Mn Shrs)	(%)	(%)	High	Low
Al Mazaya Holding	0.053	0.001	1.33%	0.42	(3.81)	0.1%	33	5%	-10%	0.16	3.05	-11.0%	-3.8%	0.067	0.047
Dar Al Thuraya Real Estate	0.128	0.000	0.00%	1.22	33.74	0.0%	19	0%	83%	0.00	0.00	3.6%	3.6%	0.190	0.040
Injazzat Real Estate Development	0.079	0.000	0.13%	0.50	(3.76)	8.8%	26	6%	-2%	0.00	0.03	-13.4%	-7.0%	0.091	0.061
Ajial Real Estate Entertainment	0.133	-0.005	-3.62%	0.20	12.24	0.0%	25	1%	-23%	0.00	0.01	1.6%	1.4%	0.213	0.115
Arkan Al Kuwait Real Estate	0.081	0.000	0.00%	0.58	8.78	9.7%	20	-3%	-9%	0.00	0.00	6.6%	3.5%	0.100	0.076
Al Argan International Real Estate	0.083	0.000	0.00%	0.24	26.93	5.9%	21	-5%	-21%	0.00	0.00	0.9%	0.3%	0.141	0.060
Al-Enmaa Real Estate	0.046	0.002	4.08%	0.46	12.13	0.0%	21	4%	-28%	0.09	1.96	3.8%	2.4%	0.079	0.037
Aayan Real Estate	0.055	0.002	3.17%	0.32	10.84	8.6%	23	8%	-24%	0.00	0.01	3.0%	1.9%	0.080	0.048
Dalqan Real Estate	0.350	0.000	0.00%	2.91	59.01	0.0%	19	0%	0%	0.00	0.00	4.9%	4.9%	0.350	0.350
Kuwait Business Town Real Estate	0.025	0.001	2.08%	0.22	6.26	0.3%	15	2%	-45%	0.04	1.82	3.6%	2.7%	0.046	0.022
Tijara and Realestate Investment	0.040	0.000	0.00%	0.37	10.50	4.9%	15	-5%	-20%	0.00	0.00	3.6%	1.9%	0.055	0.034
Munshaat Real Estate Projects	0.061	0.002	3.39%	0.41	22.48	3.5%	20	22%	-18%	0.03	0.56	1.8%	0.7%	0.085	0.045
Aqar Real Estate Investments	0.060	0.000	0.00%	0.43	5.01	8.3%	13	-8%	-25%	0.00	0.00	8.7%	7.3%	0.089	0.060
Sokouk Holding	0.027	0.002	7.91%	0.34	(4.56)	0.0%	16	18%	-22%	0.05	1.86	-7.4%	-4.7%	0.040	0.022
Al-Arabiya Real Estate	0.025	0.000	1.66%	0.21	7.43	2.5%	12	6%	-18%	0.00	0.14	2.9%	1.1%	0.033	0.020
Mashaer Holding	0.055	-0.002	-3.35%	0.42	5.90	0.0%	10	1%	-29%	0.00	0.05	7.1%	5.0%	0.086	0.048
Osos Holding Group	0.095	0.000	0.00%	0.75	7.16	10.0%	10	0%	-5%	0.00	0.00	10.5%	7.0%	0.118	0.084
Abyaar Real Estate Development	0.007	0.000	-2.74%	0.20	(0.50)	0.0%	8	-1%	-8%	0.06	8.59	-40.9%	-12.4%	0.014	0.005
Ream Real Estate	0.204	0.000	0.00%	1.56	(8.21)	1.1%	22	0%	132%	0.00	0.00	-19.0%	-10.1%	0.204	0.060
Investors Holding Group	0.016	0.000	1.91%	0.81	(0.76)	0.0%	10	21%	103%	0.16	9.77	-106.5%	-57.2%	0.017	0.007
Al Massaleh Real Estate	0.032	0.000	0.00%	0.36	(4.47)	0.0%	8	10%	-13%	0.00	0.00	-8.1%	-1.9%	0.040	0.026
Kuwait Real Estate Holding	0.023	0.000	0.00%	0.03	0.61	7.8%	4	-11%	-21%	0.00	0.00	5.5%	2.2%	0.034	0.023
Kuwait Remal Real Estate	0.018	0.000	2.34%	0.26	(2.40)	0.0%	5	21%	-28%	0.00	0.06	-11.0%	-3.9%	0.028	0.013
Real Estate Trade Centers	0.026	0.001	5.26%	0.14	148.55	0.0%	3	3%	12%	0.00	0.10	0.1%	0.1%	0.050	0.018
Taameer Real Estate Investment	0.020	0.001	4.12%	0.30	(4.27)	0.0%	5	9%	-23%	0.03	1.31	-7.0%	-4.5%	0.034	0.013
Al Masaken International Real Estate Developr	0.031	0.000	0.00%	0.35	37.93	0.5%	3	0%	-29%	0.00	0.00	0.9%	0.4%	0.074	0.027
Mena Real Estate	0.027	0.000	1.12%	0.19	(60.17)	0.0%	4	10%	-35%	0.14	5.21	-0.3%	-0.2%	0.043	0.021
Sanam Real Estate	0.030	0.000	0.00%	0.38	40.63	0.0%	4	0%	-25%	0.00	0.04	0.9%	0.9%	0.043	0.027
Ajwan Gulf Real Estate	0.011	0.000	0.00%	0.19	(7.68)	0.0%	2	0%	-29%	0.00	0.00	-2.5%	-2.2%	0.016	0.009
Effect Real Estate	0.021	0.000	0.00%	0.29	(8.85)	4.9%	2	0%	0%	0.00	0.00	-3.3%	-3.2%	0.021	0.021
Al Mudon International Real Estate	0.016	0.000	0.00%	0.12	(8.22)	0.0%	2	0%	-35%	0.00	0.00	-1.5%	-1.4%	0.029	0.015
<b>Total Real estate - 39 Companies</b>				<b>0.61</b>	<b>21.68</b>	<b>2.6%</b>	<b>1,852</b>			<b>1.55</b>	<b>39.95</b>	<b>2.79%</b>	<b>2.96%</b>		

# DAILY MARKET COVERAGE REPORT

NIC MENA SECURITIES - RESEARCH AND STUDIES DEP



Technology	Price			Valuation Multiples			MKT Cap	Price Performance		Trading Indicators		ROE	ROA	52 Week (KD)	
	Company	Close (KD)	Day Δ	Day % Δ	PBV(X)	PE(X)		DY%	Mn KD	MTD(%)	YTD (%)			Value (Mn KD)	(Mn Shrs)
Automated Systems	0.067	-0.007	-9.52%	0.52	(64.50)	6.0%	7	-3%	-6%	0.00	0.02	-0.8%	-0.7%	0.086	0.051
<b>Total Technology - 1 Companies</b>				<b>0.52</b>	<b>(64.50)</b>	<b>6.0%</b>	<b>7</b>			<b>0.00</b>	<b>0.02</b>	<b>-0.81%</b>	<b>-0.73%</b>		

Telecom	Price			Valuation Multiples			MKT Cap	Price Performance		Trading Indicators		ROE	ROA	52 Week (KD)	
	Company	Close (KD)	Day Δ	Day % Δ	PBV(X)	PE(X)		DY%	Mn KD	MTD(%)	YTD (%)			Value (Mn KD)	(Mn Shrs)
Mobile Telecommunications	0.572	0.001	0.18%	1.91	11.41	5.4%	2,475	-3%	-5%	1.83	3.19	16.7%	4.6%	0.604	0.407
Kuwait Telecommunications	0.859	0.000	0.00%	1.99	9.84	4.1%	429	2%	9%	0.01	0.01	20.2%	11.1%	0.870	0.680
National Mobile Telecommunications	0.581	0.001	0.17%	0.51	9.66	11.1%	291	1%	-30%	0.07	0.13	5.3%	2.4%	0.835	0.550
AAN Digital Services	0.012	0.000	2.63%	0.35	38.16	0.0%	10	13%	-13%	0.50	42.59	0.9%	0.7%	0.021	0.009
Hayat Communications	0.070	-0.004	-4.99%	0.60	29.83	0.0%	6	-14%	-6%	0.00	0.01	2.0%	0.8%	0.098	0.030
<b>Telecom - 5 Companies</b>				<b>1.51</b>	<b>11.03</b>	<b>5.7%</b>	<b>3,211</b>			<b>2.41</b>	<b>45.93</b>	<b>13.70%</b>	<b>7.86%</b>		

Utilities	Price			Valuation Multiples			MKT Cap	Price Performance		Trading Indicators		ROE	ROA	52 Week (KD)	
	Company	Close (KD)	Day Δ	Day % Δ	PBV(X)	PE(X)		DY%	Mn KD	MTD(%)	YTD (%)			Value (Mn KD)	(Mn Shrs)
Shamal Az-Zour Al-Oula Power & Water	0.324	-0.004	-1.22%	4.65	28.97	0.0%	356	1%	0%	1.59	4.89	16.1%	2.3%	0.500	0.297
<b>Total Utilities - 1 Companies</b>				<b>4.65</b>	<b>28.97</b>	<b>0.0%</b>	<b>356</b>			<b>1.59</b>	<b>4.89</b>	<b>16.06%</b>	<b>2.26%</b>		

<b>Total Market 173 Companies</b>				<b>1.18</b>	<b>14.81</b>	<b>3.99%</b>	<b>30,532</b>			<b>34.81</b>	<b>290.41</b>	<b>7.97%</b>	<b>2.77%</b>		
-----------------------------------	--	--	--	-------------	--------------	--------------	---------------	--	--	--------------	---------------	--------------	--------------	--	--

## End of Report

The information contained in this document is proprietary to NIC and is for use only by the persons to whom it is issued. This document is confidential and may not be distributed either in part or in whole without the express agreement of NIC. It is intended solely for the use of the individual or entity to whom it is addressed and others authorized to receive it.



شركة الاستثمار الوطنية  
NATIONAL INVESTMENTS COMPANY

Sharq, Al Mutanabi Street, Khaleejia Tower | P.O. Box 25667, Safat 13117, Kuwait

T.: +965 2226 6666 | Fax: +965 2226 6793 | [www.nic.com.kw](http://www.nic.com.kw)