

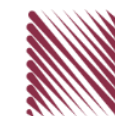
شركة الاستثمارات الوطنية
NATIONAL INVESTMENTS COMPANY

Boursa Kuwait – Daily Market Report
MENA Securities – Research & Studies Dep.

Tuesday, September 29, 2020

DAILY MARKET COVERAGE REPORT

NIC MENA SECURITIES - RESEARCH AND STUDIES DEP



Index	Close	DTD Chg Net	DTD (%)	YTD (%)	52W High	52W Low	MKT CAP Bn (KD)	PBV (X)	PE (X)	DY (%)
All Share Index	5,445.20	-121.52	-2.18%	-13.3%	6,416.43	4,339.58	31.56	1.26	15.24	3.86%
Premier Index	6,020.84	-135.05	-2.19%	-13.7%	7,172.32	4,498.65	23.52	1.70	14.13	3.55%
Main Index	4,303.51	-94.62	-2.15%	-12.4%	4,932.47	3,965.63	8.04	0.72	19.77	4.75%
NIC 50 Index	6,667.60	-157.60	-2.31%	-10.6%	7,517.86	5,014.61	26.59	1.43	14.45	3.79%

Index	Value Mn(KD)	Volume (Mn share)
All Share Index	104.05	545.53
Premier Index	82.19	182.54
Main Index	21.86	362.98
NIC 50 Index	92.92	435.35

Market Breadth	UP	Down	No Chg
All Share Index	7	111	55
Premier Index	1	19	0
Main Index	6	92	55
NIC 50 Index	1	46	3

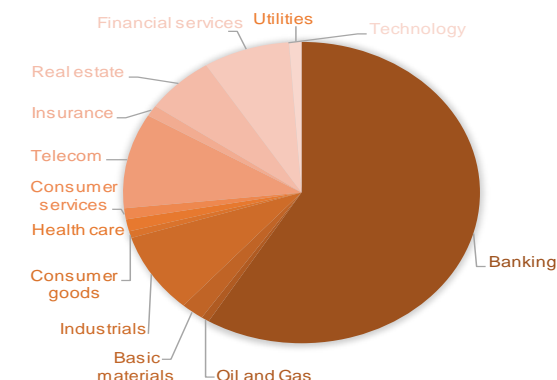
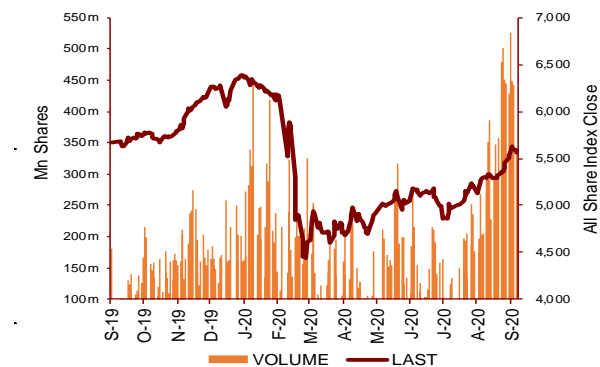
Today's Top 5 Gainer %	Close KD	Value KD	DTD (%)
Kuwait Hotels	0.106	191	25.89%
Tijara and Realestate Investme	0.041	227	4.11%
Wethaq Takaful Insurance	0.024	4,768	3.06%
Dar Al Thuraya Real Estate	0.072	1,236	2.56%
Ajial Real Estate Entertainmen	0.144	14,670	1.41%

Today's Top 5 Loser %	Close KD	Value KD	DTD (%)
Al Salam Group Holding	0.026	332,537	-10.45%
Ayan Leasing and Investrn	0.087	4,631,819	-9.78%
Al Manar Financing and Le:	0.044	1,864	-9.59%
UniCap Investment and Fir	0.043	10,152	-9.57%
Jiyad Holding	0.040	72,019	-9.28%

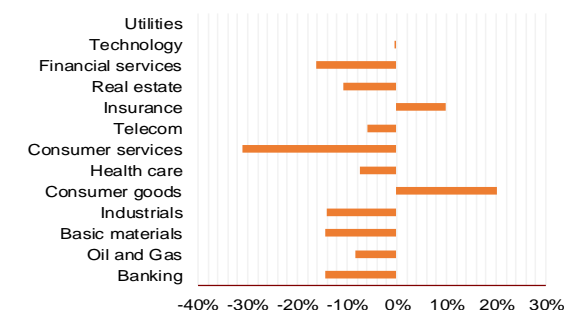
Today's Top 5 by Value	Close KD	DTD Chg	Trade Val Mn(KD)
Kuwait Finance House	0.661	-2.36%	27.88
National Bank of Kuwait	0.870	-1.92%	14.20
Ahli United Bank BSC	0.234	-2.90%	5.02
Agility Public Warehousing	0.657	-3.10%	4.89
Ayan Leasing and Investment	0.087	-9.78%	4.63

Top 5 by Volume	Close KD	DTD Chg	Trade Vol Mn(Shrs)
Ayan Leasing and Investrn	0.087	-9.78%	50.90
AAN Digital Services	0.013	-5.15%	46.61
Kuwait Finance House	0.661	-2.36%	42.12
Gulf Petroleum Investment	0.018	-7.54%	29.13
Arzan Financial Group for f	0.056	-1.75%	25.95

Sector	Close	DTD Chg Net	DTD (%)	YTD (%)	52W High	52W Low	MKT CAP Bn (KD)	PBV (X)	PE (X)	DY (%)
Banking	1,271.50	-27.940	-2.15%	-14.2%	1,536.8	986.4	18.53	1.68	15.44	3.4%
Oil and Gas	1,136.82	-10.950	-0.95%	-8.2%	1,372.2	985.7	0.23	0.83	26.61	5.3%
Basic materials	777.26	-15.690	-1.98%	-14.4%	991.8	561.7	0.65	0.94	14.29	7.7%
Industrials	797.79	-25.740	-3.13%	-14.0%	937.5	602.9	2.72	0.87	12.97	5.1%
Consumer goods	766.52	1.650	0.22%	20.3%	810.7	548.6	0.23	1.52	92.90	2.2%
Health care	820.13	0.000	0.00%	-7.3%	921.9	815.0	0.41	4.14	48.09	1.0%
Consumer services	740.74	-11.380	-1.51%	-30.9%	1,083.1	674.8	0.37	0.85	35.57	4.7%
Telecom	1,051.30	-12.970	-1.22%	-5.9%	1,116.7	802.2	3.22	1.52	11.06	5.7%
Insurance	1,048.12	-13.880	-1.31%	9.9%	1,068.3	901.0	0.37	0.79	8.91	5.6%
Real estate	944.49	-26.610	-2.74%	-10.8%	1,083.4	763.2	1.99	0.65	23.26	2.4%
Financial services	906.29	-26.800	-2.87%	-16.2%	1,097.0	801.4	2.47	0.71	16.01	4.2%
Technology	512.16	-12.370	-2.36%	-0.6%	632.9	371.0	0.01	0.55	-68.29	5.7%
Utilities	842.11	-34.210	-3.90%	0.0%	1,042.1	781.6	0.35	4.59	28.62	0.0%
	5,445.20	-121.52	-2.18%	-13.3%	6,416.4	4,339.6	31.56	1.26	15.24	3.86%



YTD Sector Performance %



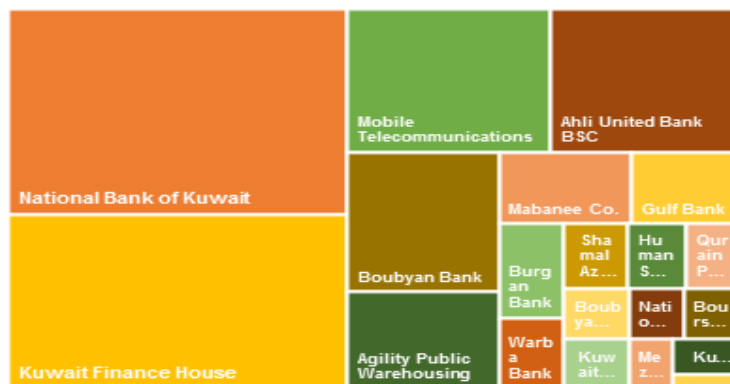
DAILY MARKET COVERAGE REPORT

NIC MENA SECURITIES - RESEARCH AND STUDIES DEP

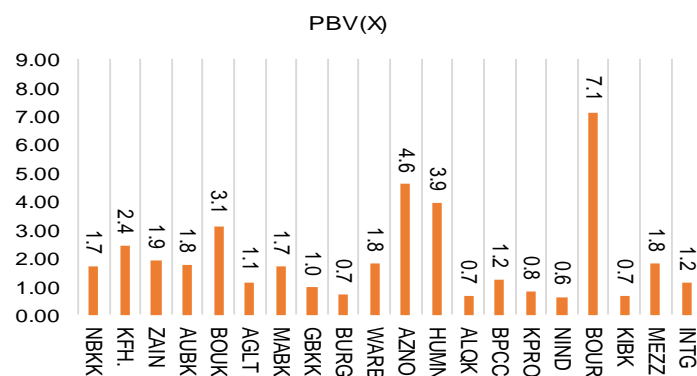


Premier Market	Price			Valuation Multiples			MKT Cap	Price Performance		Trading Indicators		ROE	ROA	52 Week (KD)	
	Close (KD)	Day Δ	Day % Δ	PBV(X)	PE(X)	DY%	Mn KD	MTD(%)	YTD (%)	Value (Mn KD)	(Mn Shrs)	(%)	(%)	High	Low
National Bank of Kuwait	0.870	-0.017	-1.92%	1.72	14.72	3.6%	5,908	1%	-15%	14.20	16.29	11.7%	1.4%	1.062	0.654
Kuwait Finance House	0.661	-0.016	-2.36%	2.43	19.98	2.5%	5,016	5%	-11%	27.88	42.12	12.2%	1.3%	0.761	0.473
Mobile Telecommunications	0.574	-0.008	-1.37%	1.91	11.45	5.4%	2,484	-3%	-5%	4.32	7.53	16.7%	4.6%	0.604	0.407
Ahli United Bank BSC	0.234	-0.007	-2.90%	1.76	10.31	5.2%	2,259	0%	-20%	5.02	21.39	17.1%	1.8%	0.311	0.160
Boubyan Bank	0.595	-0.003	-0.50%	3.13	28.76	1.1%	1,802	3%	-2%	1.44	2.42	10.9%	1.2%	0.638	0.380
Agility Public Warehousing	0.657	-0.021	-3.10%	1.14	14.49	2.8%	1,257	5%	-8%	4.89	7.39	7.9%	4.2%	0.748	0.357
Mabane Co.	0.730	-0.021	-2.80%	1.71	14.30	1.4%	807	15%	-14%	2.08	2.84	11.9%	5.8%	0.877	0.434
Gulf Bank	0.220	-0.006	-2.65%	0.96	10.04	4.5%	639	3%	-27%	4.54	20.68	9.6%	1.0%	0.317	0.180
Burgan Bank	0.202	-0.006	-2.88%	0.70	6.25	5.7%	529	2%	-34%	0.78	3.86	11.3%	1.2%	0.324	0.175
Warba Bank	0.249	-0.005	-1.97%	1.80	23.71	0.0%	392	25%	-5%	2.72	10.90	7.6%	0.5%	0.279	0.164
Shamal Az-Zour Al-Oula Power & Water	0.320	-0.013	-3.90%	4.59	28.62	0.0%	352	0%	0%	4.45	13.75	16.1%	2.3%	0.500	0.297
Human Soft Holding	2.601	-0.064	-2.40%	3.94	8.82	7.1%	316	3%	-14%	1.02	0.39	44.6%	30.3%	3.470	1.944
Qurain Petrochemical Industries	0.274	-0.006	-2.14%	0.67	9.91	5.6%	280	-4%	-12%	0.26	0.96	6.7%	3.6%	0.323	0.163
Boubyan Petrochemical	0.550	-0.014	-2.48%	1.24	23.46	9.4%	277	3%	-18%	0.27	0.48	5.3%	2.1%	0.800	0.395
Kuwait Projects Company Holding	0.151	-0.005	-3.21%	0.81	9.12	6.1%	274	1%	-30%	0.54	3.53	8.9%	0.3%	0.225	0.147
National Industries Group Holding	0.166	-0.009	-5.14%	0.63	5.11	6.5%	237	8%	-30%	1.10	6.47	12.3%	3.7%	0.247	0.121
Boursa Kuwait Securities Co	1.140	-0.023	-1.98%	7.13	23.86	0.0%	229	0%	0%	2.81	2.46	29.9%	26.5%	1.210	0.990
Kuwait International Bank	0.186	-0.009	-4.62%	0.68	11.06	5.4%	190	8%	-29%	3.41	18.01	6.1%	0.6%	0.270	0.162
Mezzan Holding	0.623	0.003	0.48%	1.80	33.67	2.7%	190	-4%	25%	0.15	0.25	5.3%	2.2%	0.665	0.428
Integrated Holding	0.359	-0.021	-5.53%	1.15	10.00	11.1%	79	3%	-35%	0.30	0.83	11.5%	8.5%	0.600	0.342
Total		-135.05	-2.19%	1.70	14.13	3.55%	23.52	2.8%	-13.7%	82.19	182.54	12.01%	1.56%		

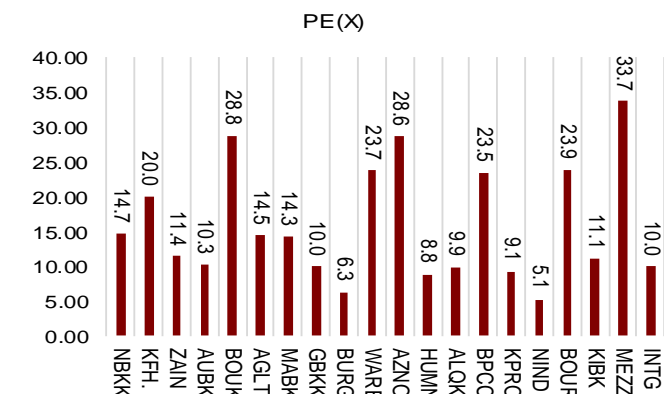
Market Capitalization



Price to Book Value

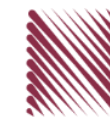


Price to Earning Value

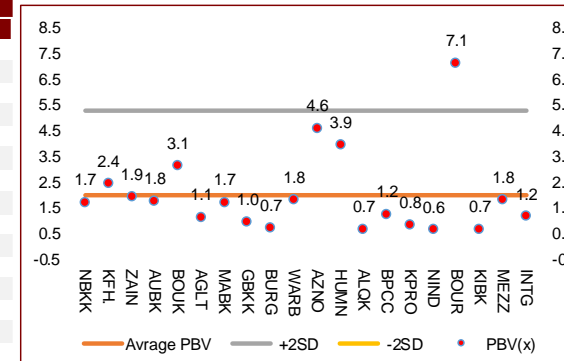


DAILY MARKET COVERAGE REPORT

NIC MENA SECURITIES - RESEARCH AND STUDIES DEP



Premier Market	Price			Valuation Multiples			MKT Cap	Price Performance		ROE	ROA
Company	Close (KD)	Day Δ	Day % Δ	PBV(X)	PE(X)	DY%	Mn KD	MTD(%)	YTD (%)	(%)	(%)
National Bank of Kuwait	0.870	-0.017	-1.92%	1.72	14.7	3.6%	5,908	1.2%	-14.6%	11.7%	1.4%
Kuwait Finance House	0.661	-0.016	-2.36%	2.43	20.0	2.5%	5,016	5.3%	-10.6%	12.2%	1.3%
Mobile Telecommunications	0.574	-0.008	-1.37%	1.91	11.4	5.4%	2,484	-3.1%	-4.7%	16.7%	4.6%
Ahli United Bank BSC	0.234	-0.007	-2.90%	1.76	10.3	5.2%	2,259	0.4%	-20.3%	17.1%	1.8%
Boubyan Bank	0.595	-0.003	-0.50%	3.13	28.8	1.1%	1,802	3.3%	-2.2%	10.9%	1.2%
Agility Public Warehousing	0.657	-0.021	-3.10%	1.14	14.5	2.8%	1,257	5.3%	-7.6%	7.9%	4.2%
Mabane Co.	0.730	-0.021	-2.80%	1.71	14.3	1.4%	807	14.6%	-14.5%	11.9%	5.8%
Gulf Bank	0.220	-0.006	-2.65%	0.96	10.0	4.5%	639	3.3%	-27.4%	9.6%	1.0%
Burgan Bank	0.202	-0.006	-2.88%	0.70	6.3	5.7%	529	2.0%	-33.6%	11.3%	1.2%
Warba Bank	0.249	-0.005	-1.97%	1.80	23.7	0.0%	392	25.1%	-4.9%	7.6%	0.5%
Shamal Az-Zour Al-Oula Power & Water	0.320	-0.013	-3.90%	4.59	28.6	0.0%	352	0.0%	0.0%	16.1%	2.3%
Human Soft Holding	2.601	-0.064	-2.40%	3.94	8.8	7.1%	316	2.9%	-13.6%	44.6%	30.3%
Qurain Petrochemical Industries	0.274	-0.006	-2.14%	0.67	9.9	5.6%	280	-3.9%	-11.6%	6.7%	3.6%
Boubyan Petrochemical	0.550	-0.014	-2.48%	1.24	23.5	9.4%	277	2.6%	-17.7%	5.3%	2.1%
Kuwait Projects Company Holding	0.151	-0.005	-3.21%	0.81	9.1	6.1%	274	1.3%	-30.1%	8.9%	0.3%
National Industries Group Holding	0.166	-0.009	-5.14%	0.63	5.1	6.5%	237	7.7%	-30.3%	12.3%	3.7%
Boursa Kuwait Securities Co	1.140	-0.023	-1.98%	7.13	23.9	0.0%	229	0.0%	0.0%	29.9%	26.5%
Kuwait International Bank	0.186	-0.009	-4.62%	0.68	11.1	5.4%	190	8.1%	-28.7%	6.1%	0.6%
Mezzan Holding	0.623	0.003	0.48%	1.80	33.7	2.7%	190	-4.2%	24.6%	5.3%	2.2%
Integrated Holding	0.359	-0.021	-5.53%	1.15	10.0	11.1%	79	2.6%	-34.8%	11.5%	8.5%
Total		-135.05	-2.19%	1.70	14.13	3.55%	23.52	2.8%	-13.7%	12.01%	1.56%



Premier Market	Price			Moving Average		RSI	MKT Cap	Price Performance		52 Week (KD)	
Description	Close (KD)	Day Δ	Day % Δ	50 Day	200 Day	14 Day	Mn KD	MTD(%)	YTD (%)	High	Low
Premier Index	6,021	-135.05	-2.19%	5,739	5,883	83	24	2.8%	-13.7%	7,172	4,499

Top 5 Performrs (Today's Price Change)

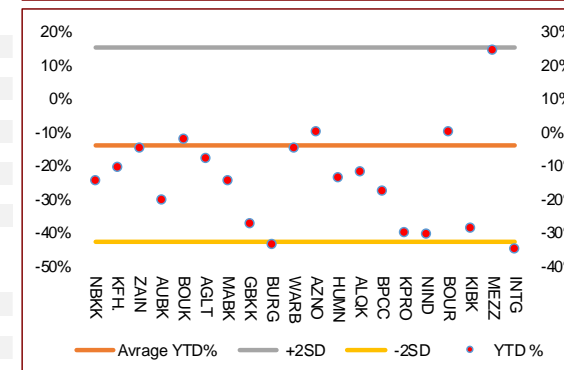
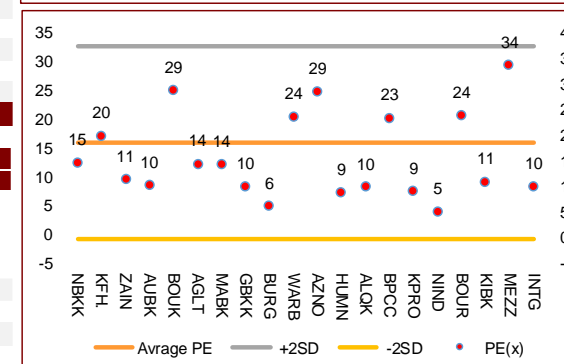
Mezzan Holding	0.623	0.003	0.48%	0.616	0.556	42	190	-4.2%	24.6%	0.665	0.428
Boubyan Bank	0.595	-0.003	-0.50%	0.563	0.544	56	1,802	3.3%	-2.2%	0.638	0.380
Mobile Telecommunications	0.574	-0.008	-1.37%	0.569	0.548	65	2,484	-3.1%	-4.7%	0.604	0.407
National Bank of Kuwait	0.870	-0.017	-1.92%	0.833	0.849	76	5,908	1.2%	-14.6%	1.062	0.654
Warba Bank	0.249	-0.005	-1.97%	0.210	0.220	79	392	25.1%	-4.9%	0.279	0.164

Middle Performrs (Today's Price Change)

Boursa Kuwait Securities Co	1.140	-0.023	-1.98%	0.242	0.061	73	229	0.0%	0.0%	1.210	0.990
Qurain Petrochemical Industries	0.274	-0.006	-2.14%	0.282	0.267	59	280	-3.9%	-11.6%	0.323	0.163
Kuwait Finance House	0.661	-0.016	-2.36%	0.618	0.639	80	5,016	5.3%	-10.6%	0.761	0.473
Human Soft Holding	2.601	-0.064	-2.40%	2.658	2.798	53	316	2.9%	-13.6%	3.470	1.944
Boubyan Petrochemical	0.550	-0.014	-2.48%	0.556	0.575	70	277	2.6%	-17.7%	0.800	0.395
Gulf Bank	0.220	-0.006	-2.65%	0.209	0.237	76	639	3.3%	-27.4%	0.317	0.180
Mabane Co.	0.730	-0.021	-2.80%	0.650	0.683	91	807	14.6%	-14.5%	0.877	0.434
Burgan Bank	0.202	-0.006	-2.88%	0.195	0.230	73	529	2.0%	-33.6%	0.324	0.175
Ahli United Bank BSC	0.234	-0.007	-2.90%	0.215	0.228	73	2,259	0.4%	-20.3%	0.311	0.160
Agility Public Warehousing	0.657	-0.021	-3.10%	0.100	0.100	86	1,257	5.3%	-7.6%	1.210	0.996

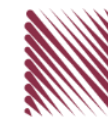
Bottom 5 Performrs (Today's Price Change)

Integrated Holding	0.359	-0.021	-5.53%	0.374	0.449	41	79	2.6%	-34.8%	0.600	0.342
National Industries Group Holding	0.166	-0.009	-5.14%	0.162	0.185	76	237	7.7%	-30.3%	0.247	0.121
Kuwait International Bank	0.186	-0.009	-4.62%	0.175	0.205	76	190	8.1%	-28.7%	0.270	0.162
Shamal Az-Zour Al-Oula Power & Water	0.320	-0.013	-3.90%	0.205	0.051	63	352	0.0%	0.0%	0.500	0.297
Kuwait Projects Company Holding	0.151	-0.005	-3.21%	0.152	0.178	63	274	1.3%	-30.1%	0.225	0.147



DAILY MARKET COVERAGE REPORT

NIC MENA SECURITIES - RESEARCH AND STUDIES DEP



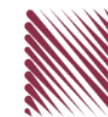
Banking Sector	Price			Valuation Multiples			MKT Cap	Price Performance		Trading Indicators		ROE	ROA	52 Week (KD)	
	Company	Close (KD)	Day Δ	Day % Δ	PBV(X)	PE(X)		DY%	Mn KD	MTD(%)	YTD (%)			Value (Mn KD)	(Mn Shrs)
National Bank of Kuwait	0.870	-0.017	-1.92%	1.72	14.72	3.6%	5,908	1%	-15%	14.20	16.29	11.7%	1.4%	1.062	0.654
Kuwait Finance House	0.661	-0.016	-2.36%	2.43	19.98	2.5%	5,016	5%	-11%	27.88	42.12	12.2%	1.3%	0.761	0.473
Ahli United Bank BSC	0.234	-0.007	-2.90%	1.76	10.31	5.2%	2,259	0%	-20%	5.02	21.39	17.1%	1.8%	0.311	0.160
Boubyan Bank	0.595	-0.003	-0.50%	3.13	28.76	1.1%	1,802	3%	-2%	1.44	2.42	10.9%	1.2%	0.638	0.380
Commercial Bank of Kuwait	0.500	0.000	0.00%	1.32	0.00	3.7%	965	0%	-5%	0.02	0.03	0.0%	0.0%	0.555	0.465
Gulf Bank	0.220	-0.006	-2.65%	0.96	10.04	4.5%	639	3%	-27%	4.54	20.68	9.6%	1.0%	0.317	0.180
Ahli United Bank	0.271	-0.014	-4.91%	1.16	9.61	5.0%	528	6%	-16%	0.47	1.70	12.1%	1.3%	0.330	0.225
Burgan Bank	0.202	-0.006	-2.88%	0.70	6.25	5.7%	529	2%	-34%	0.78	3.86	11.3%	1.2%	0.324	0.175
Warba Bank	0.249	-0.005	-1.97%	1.80	23.71	0.0%	392	25%	-5%	2.72	10.90	7.6%	0.5%	0.279	0.164
Al Ahli Bank of Kuwait	0.186	-0.010	-5.10%	0.53	10.42	7.5%	299	9%	-27%	0.44	2.34	5.1%	0.6%	0.307	0.156
Kuwait International Bank	0.186	-0.009	-4.62%	0.68	11.06	5.4%	190	8%	-29%	3.41	18.01	6.1%	0.6%	0.270	0.162
Total Banking Sector - 11 Companies				1.68	15.44	3.4%	18,527			60.92	139.74	10.90%	1.21%		

Basic materials	Price			Valuation Multiples			MKT Cap	Price Performance		Trading Indicators		ROE	ROA	52 Week (KD)	
	Company	Close (KD)	Day Δ	Day % Δ	PBV(X)	PE(X)		DY%	Mn KD	MTD(%)	YTD (%)			Value (Mn KD)	(Mn Shrs)
Qurain Petrochemical Industries	0.274	-0.006	-2.14%	0.67	9.91	5.6%	280	-4%	-12%	0.26	0.96	6.7%	3.6%	0.323	0.163
Boubyan Petrochemical	0.550	-0.014	-2.48%	1.24	23.46	9.4%	277	3%	-18%	0.27	0.48	5.3%	2.1%	0.800	0.395
Al Kout Industrial Projects	0.769	0.000	0.00%	2.50	16.21	6.5%	78	0%	-10%	0.00	0.00	15.4%	11.3%	0.850	0.769
Kuwait Foundry	0.258	0.000	0.00%	0.86	20.85	20.7%	19	8%	-23%	0.00	0.00	4.1%	3.8%	0.495	0.192
Total Basic materials - 4 Companies				0.94	14.29	7.7%	653			0.53	1.43	6.57%	5.07%		

Consumer goods	Price			Valuation Multiples			MKT Cap	Price Performance		Trading Indicators		ROE	ROA	52 Week (KD)	
	Company	Close (KD)	Day Δ	Day % Δ	PBV(X)	PE(X)		DY%	Mn KD	MTD(%)	YTD (%)			Value (Mn KD)	(Mn Shrs)
Mezzan Holding	0.623	0.003	0.48%	1.80	33.67	2.7%	190	-4%	25%	0.15	0.25	5.3%	2.2%	0.665	0.428
Livestock Transport and Trading	0.183	-0.002	-1.08%	0.95	32.62	0.1%	38	-3%	3%	0.05	0.28	2.9%	2.0%	0.200	0.152
Danah Al Safat Foodstuff	0.012	0.000	0.00%	0.25	(0.30)	0.1%	1	0%	-25%	0.00	0.00	-84.8%	-43.2%	0.029	0.010
Total Basic materials - 3 Companies				1.52	92.90	2.2%	229			0.20	0.53	1.64%	0.90%		

DAILY MARKET COVERAGE REPORT

NIC MENA SECURITIES - RESEARCH AND STUDIES DEP



Consumer services	Price			Valuation Multiples			MKT Cap	Price Performance		Trading Indicators		ROE	ROA	52 Week (KD)	
Company	Close (KD)	Day Δ	Day % Δ	PBV(X)	PE(X)	DY%	Mn KD	MTD(%)	YTD (%)	Value (Mn KD)	(Mn Shrs)	(%)	(%)	High	Low
Jazeera Airways	0.590	-0.014	-2.32%	2.93	7.90	5.9%	118	6%	-46%	0.81	1.37	37.1%	9.0%	1.110	0.372
Kuwait National Cinema	0.700	0.000	0.00%	0.80	7.57	6.9%	65	4%	-33%	0.02	0.03	10.6%	7.2%	1.050	0.600
Oula Fuel Marketing	0.111	-0.001	-0.89%	0.67	11.62	5.3%	45	0%	-13%	0.00	0.04	5.7%	3.2%	0.134	0.095
Al Soor Fuel Marketing	0.110	-0.001	-0.90%	0.68	12.87	4.5%	45	0%	-12%	0.01	0.07	5.3%	3.7%	0.129	0.096
Sultan Center Food Products	0.053	-0.002	-3.11%	0.66	13.34	0.0%	30	-4%	2%	0.01	0.20	4.9%	0.7%	0.060	0.036
IFA Hotels and Resorts	0.023	0.000	-1.69%	0.83	(0.63)	0.0%	14	-7%	-58%	0.01	0.46	-131.5%	-8.1%	0.062	0.021
Jiyad Holding	0.040	-0.004	-9.28%	0.36	8.00	0.0%	14	23%	3%	0.07	1.77	4.5%	2.8%	0.047	0.029
Kuwait Resorts	0.052	-0.003	-4.94%	0.36	9.44	0.0%	10	14%	-10%	0.04	0.82	3.8%	3.2%	0.060	0.038
Alrai Media Group	0.037	0.000	0.00%	0.83	(2.41)	0.0%	9	0%	-2%	0.00	0.00	-34.2%	-20.0%	0.045	0.031
Future Kid Entertainment and Real Estate	0.080	0.000	0.00%	0.46	30.22	14.4%	9	5%	-9%	0.00	0.00	1.5%	0.9%	0.110	0.069
Al Eid Food	0.058	-0.002	-2.87%	0.39	4.59	0.0%	7	4%	-13%	0.00	0.06	8.4%	6.1%	0.080	0.038
Kuwait Hotels	0.106	0.022	25.89%	1.49	(6.12)	0.0%	6	21%	6%	0.00	0.00	-24.4%	-13.2%	0.101	0.069
Palms Agro Production	0.065	0.000	0.00%	0.55	(45.82)	15.3%	3	15%	62%	0.00	0.00	-1.2%	-0.9%	0.065	0.025
Kuwait Cable Vision	0.014	0.000	0.00%	0.52	(11.65)	0.0%	1	0%	0%	0.00	0.00	-4.5%	-3.0%	0.026	0.012
Total Consumer services - 14 Companies				0.85	35.57	4.7%	375			0.98	4.80	2.38%	2.72%		

Financial services	Price			Valuation Multiples			MKT Cap	Price Performance		Trading Indicators		ROE	ROA	52 Week (KD)	
Company	Close (KD)	Day Δ	Day % Δ	PBV(X)	PE(X)	DY%	Mn KD	MTD(%)	YTD (%)	Value (Mn KD)	(Mn Shrs)	(%)	(%)	High	Low
Egypt Kuwait Holding	0.365	0.000	0.00%	2.16	12.32	5.4%	374	-2%	-19%	0.00	0.00	17.6%	7.1%	0.500	0.318
Kuwait Projects Company Holding	0.151	-0.005	-3.21%	0.81	9.12	6.1%	274	1%	-30%	0.54	3.53	8.9%	0.3%	0.225	0.147
National Industries Group Holding	0.166	-0.009	-5.14%	0.63	5.11	6.5%	237	8%	-30%	1.10	6.47	12.3%	3.7%	0.247	0.121
Boursa Kuwait Securities Co	1.140	-0.023	-1.98%	7.13	23.86	0.0%	229	0%	0%	2.81	2.46	29.9%	26.5%	1.210	0.990
GFH Financial Group	0.049	-0.001	-2.58%	0.53	6.68	5.8%	166	-2%	-28%	0.19	3.77	8.0%	1.3%	0.074	0.042
National Investments	0.133	-0.005	-3.62%	0.59	9.89	6.1%	106	12%	-4%	0.90	6.74	5.9%	5.0%	0.158	0.080
Tamdeen Investment	0.305	0.000	0.00%	0.37	12.65	3.9%	104	22%	-12%	0.00	0.01	3.0%	2.2%	0.400	0.199
Alimtiq Investment Group	0.092	-0.006	-6.33%	0.44	4.78	8.7%	94	8%	-27%	0.64	6.89	9.1%	5.2%	0.137	0.071
Commercial Facilities	0.182	-0.004	-2.15%	0.56	7.01	9.2%	92	-1%	-16%	0.02	0.09	8.0%	4.2%	0.235	0.179
Kuwait Investment	0.128	-0.005	-3.76%	0.56	4.01	7.9%	70	13%	-15%	0.27	2.09	13.9%	6.0%	0.172	0.095
Aayan Leasing and Investment	0.087	-0.009	-9.78%	1.02	(4.76)	2.1%	70	46%	85%	4.63	50.90	-21.4%	-4.9%	0.102	0.032
Noor Financial Investment	0.157	-0.012	-7.10%	0.96	7.68	3.2%	62	-3%	32%	0.12	0.71	12.5%	7.5%	0.184	0.076

DAILY MARKET COVERAGE REPORT

NIC MENA SECURITIES - RESEARCH AND STUDIES DEP



Financial services	Price			Valuation Multiples			MKT Cap	Price Performance		Trading Indicators		ROE	ROA	52 Week (KD)		
	Company	Close (KD)	Day Δ	Day % Δ	PBV(X)	PE(X)	DY%	Mn KD	MTD(%)	YTD (%)	Value (Mn KD)	(Mn Shrs)	(%)	(%)	High	Low
Arzan Financial Group for Financing and Invest	0.056	-0.001	-1.75%	0.45	40.71	0.0%	45	-5%	134%	1.45	25.95	1.1%	0.7%	0.064	0.022	
Kuwait Financial Centre	0.084	-0.003	-3.89%	0.42	5.78	5.9%	40	4%	-21%	0.05	0.65	7.3%	3.5%	0.121	0.070	
Gulf Investment House	0.094	-0.004	-4.08%	1.06	173.87	0.0%	38	1%	46%	0.04	0.37	0.6%	0.5%	0.108	0.038	
Al Bareaq Holding	0.079	0.000	0.00%	0.83	15.80	0.0%	35	-25%	-21%	0.00	0.00	5.2%	5.0%	0.110	0.079	
Arabi Group Holdings	0.198	0.000	0.00%	1.07	(19.90)	0.0%	33	0%	-28%	0.00	0.00	-5.4%	-0.6%	0.337	0.088	
Kuwait and Middle East Financial Investment	0.110	-0.001	-0.90%	1.79	43.93	0.0%	29	-4%	23%	0.00	0.04	4.1%	3.2%	0.138	0.063	
Umm Al Qaiwain General Investment Co	0.072	0.000	0.00%	0.48	13.53	5.1%	26	-19%	8%	0.02	0.32	3.6%	3.3%	0.096	0.052	
Privatization Holding	0.042	-0.001	-3.23%	0.31	(37.78)	0.0%	26	0%	-15%	0.01	0.35	-0.8%	-0.5%	0.059	0.037	
Asiya Capital Investments	0.032	-0.001	-1.84%	0.34	16.49	0.2%	25	3%	-22%	0.12	3.47	2.1%	2.0%	0.041	0.029	
KAMCO Investment	0.072	-0.001	-0.83%	0.44	8.12	0.0%	25	3%	-20%	0.05	0.67	5.4%	2.3%	0.111	0.060	
Securities House	0.043	-0.002	-3.78%	0.59	(63.30)	0.0%	24	8%	-5%	0.33	7.60	-0.9%	-0.7%	0.050	0.027	
Inoest BSC Public	0.075	-0.003	-3.35%	0.52	10.05	7.9%	22	27%	12%	0.02	0.30	5.2%	2.9%	0.080	0.044	
Coast Investment and Development	0.036	0.000	-1.10%	0.38	35.68	0.0%	21	5%	-10%	0.02	0.72	1.1%	1.0%	0.045	0.026	
First Investment	0.032	-0.001	-2.17%	0.49	(0.43)	0.0%	20	5%	-8%	0.38	11.97	-113.6%	-62.0%	0.045	0.022	
Bayan Investment	0.047	0.000	0.00%	0.47	(24.24)	0.0%	17	-2%	23%	0.00	0.00	-1.9%	-0.8%	0.053	0.031	
Al Madar Finance and Investment	0.082	-0.002	-2.26%	0.74	12.25	0.0%	17	-4%	-12%	0.06	0.68	6.1%	5.0%	0.148	0.062	
Manazel Holding	0.032	-0.002	-6.18%	0.70	20.50	0.0%	14	-3%	-19%	0.11	3.29	3.4%	0.8%	0.048	0.021	
Al Manar Financing and Leasing	0.044	-0.005	-9.59%	0.40	11.42	1.2%	14	-5%	-14%	0.00	0.04	3.5%	2.7%	0.060	0.037	
Kuwait Finance and Investment	0.044	-0.001	-3.12%	0.34	19.53	0.0%	13	-3%	-12%	0.00	0.10	1.8%	1.2%	0.058	0.038	
National International Holding	0.060	-0.002	-3.39%	0.31	7.21	4.9%	13	-1%	-18%	0.02	0.26	4.4%	3.3%	0.081	0.051	
Osoul Investment	0.080	-0.001	-0.74%	0.60	6.72	0.0%	12	-5%	7%	0.02	0.22	9.0%	8.2%	0.121	0.070	
Amar Finance and Leasing	0.056	0.000	0.00%	0.63	46.88	0.0%	11	9%	47%	0.00	0.00	1.3%	1.2%	0.064	0.037	
UniCap Investment and Finance	0.043	-0.005	-9.57%	0.43	(21.27)	0.0%	10	14%	-23%	0.01	0.23	-2.0%	-1.0%	0.057	0.035	
Gulf North Africa Holding	0.058	0.000	0.00%	0.77	74.98	0.0%	9	4%	-6%	0.00	0.07	1.0%	0.6%	0.062	0.052	
International Financial Advisors	0.031	0.000	0.00%	0.93	(0.42)	2.1%	8	0%	-42%	0.00	0.00	-222.8%	-19.3%	0.060	0.027	
Al Salam Group Holding	0.026	-0.003	-10.45%	0.22	194.02	0.0%	7	11%	-12%	0.33	12.39	0.1%	0.1%	0.033	0.018	
Amwal International Investment	0.036	0.000	0.00%	0.66	13.16	0.0%	6	-1%	19%	0.00	0.00	5.0%	2.6%	0.044	0.030	
Credit Rating and Collection	0.032	0.000	0.00%	0.97	(21.20)	0.0%	5	-11%	58%	0.00	0.00	-4.6%	-4.3%	0.035	0.019	
Ekttitab Holding	0.015	-0.001	-3.75%	0.37	(10.84)	0.0%	5	16%	-1%	0.04	2.71	-3.4%	-3.0%	0.017	0.010	
Al Madina for Finance and Investment	0.012	-0.001	-8.21%	0.41	(2.31)	0.0%	5	15%	-18%	0.13	9.59	-17.9%	-7.7%	0.019	0.009	
Kuwait Syrian Holding Co	0.027	0.000	0.00%	0.23	(13.79)	0.0%	5	2%	-14%	0.00	0.00	-1.7%	-1.1%	0.043	0.022	
Warba Capital Holding	0.047	0.000	0.00%	0.52	(7.39)	0.0%	5	-7%	-28%	0.00	0.00	-7.0%	-6.2%	0.071	0.042	
National Consumer Holding	0.048	0.000	0.00%	0.53	235.16	0.0%	4	-13%	-13%	0.00	0.00	0.2%	0.2%	0.100	0.010	
Al Deera Holding	0.016	0.000	0.00%	0.70	(9.02)	0.0%	3	0%	-20%	0.00	0.00	-7.7%	-1.7%	0.022	0.011	
Al Mal Investment Company	0.009	0.000	-2.20%	0.40	(0.83)	0.0%	3	-1%	-10%	0.05	5.33	-47.6%	-23.3%	0.016	0.008	
Gulf Franchising Holding	0.048	0.000	0.00%	0.75	(2.08)	0.0%	2	-18%	-36%	0.00	0.01	-36.2%	-10.8%	0.160	0.001	
Tamkeen Holding	0.005	0.000	0.00%	0.05	(7.18)	0.0%	0	0%	0%	0.00	0.00	-0.7%	-0.7%	0.005	0.005	
Total Financial services - 49 Companies				0.71	16.01	4.2%	2,473				14.48	170.98	4.42%	4.14%		

DAILY MARKET COVERAGE REPORT

NIC MENA SECURITIES - RESEARCH AND STUDIES DEP



Health care	Price			Valuation Multiples			MKT Cap	Price Performance		Trading Indicators		ROE	ROA	52 Week (KD)	
Company	Close (KD)	Day Δ	Day % Δ	PBV(X)	PE(X)	DY%	Mn KD	MTD(%)	YTD (%)	Value (Mn KD)	(Mn Shrs)	(%)	(%)	High	Low
Al-Maidan Clinic for Oral Health Services	1.220	0.000	0.00%	7.90	47.78	0.6%	305	0%	0%	0.00	0.00	16.5%	10.9%	1.240	1.220
Advanced Technology	0.597	0.000	0.00%	1.55	48.60	2.5%	90	-5%	-26%	0.00	0.00	3.2%	0.7%	0.900	0.580
Yiaco Medical	0.707	0.000	0.00%	6.06	52.72	0.0%	12	0%	0%	0.00	0.00	11.5%	0.6%	0.707	0.707
Total Health care - 3 Companies				4.14	48.09	1.0%	407			0.00	0.00	8.61%	4.68%		

Industrials	Price			Valuation Multiples			MKT Cap	Price Performance		Trading Indicators		ROE	ROA	52 Week (KD)	
Company	Close (KD)	Day Δ	Day % Δ	PBV(X)	PE(X)	DY%	Mn KD	MTD(%)	YTD (%)	Value (Mn KD)	(Mn Shrs)	(%)	(%)	High	Low
Agility Public Warehousing	0.657	-0.021	-3.10%	1.14	14.49	2.8%	1,257	5%	-8%	4.89	7.39	7.9%	4.2%	0.748	0.357
Human Soft Holding	2.601	-0.064	-2.40%	3.94	8.82	7.1%	316	3%	-14%	1.02	0.39	44.6%	30.3%	3.470	1.944
ALAFCO Aviation Lease and Finance	0.157	-0.009	-5.42%	0.47	8.45	6.4%	149	0%	-42%	0.84	5.26	5.5%	1.4%	0.278	0.138
Gulf Cable and Electrical Industries	0.683	-0.035	-4.87%	0.82	33.87	4.0%	143	7%	41%	0.57	0.82	2.4%	2.2%	0.742	0.390
Kuwait Cement	0.193	-0.010	-4.93%	0.66	34.25	7.7%	138	9%	-23%	0.33	1.67	1.9%	1.3%	0.270	0.144
Integrated Holding	0.359	-0.021	-5.53%	1.15	10.00	11.1%	79	3%	-35%	0.30	0.83	11.5%	8.5%	0.600	0.342
Educational Holding Group	0.309	0.000	0.00%	1.79	9.78	4.8%	76	0%	-32%	0.00	0.00	18.3%	16.7%	0.475	0.228
Kuwait Portland Cement	0.751	-0.017	-2.21%	1.01	9.92	13.1%	75	3%	-24%	0.22	0.29	10.2%	8.2%	1.150	0.683
United Projects for Aviation Services	0.465	0.000	0.00%	0.98	7.96	4.5%	74	0%	-9%	0.00	0.00	12.3%	7.8%	0.512	0.367
Heavy Engineering Industries and Shipbuilding	0.363	-0.014	-3.71%	1.05	5.83	8.0%	65	-1%	-10%	0.53	1.43	18.0%	5.9%	0.419	0.298
National Industries	0.155	0.000	0.00%	0.64	12.63	6.4%	54	-5%	-6%	0.02	0.10	5.1%	3.8%	0.173	0.143
ACICO Industries	0.101	0.000	0.00%	0.32	13.15	4.9%	33	6%	-25%	0.01	0.06	2.5%	0.6%	0.139	0.081
Ras Al Khaimah for White Cement and Constr	0.065	0.000	0.00%	0.51	19.94	8.4%	33	0%	0%	0.00	0.00	2.6%	2.0%	0.080	0.055
Kuwait Company for Process Plant Constructi	0.304	-0.010	-3.18%	1.20	6.51	5.9%	32	-2%	26%	0.15	0.49	18.5%	7.7%	0.337	0.175
Combined Group Contracting	0.172	-0.016	-8.51%	0.60	7.75	11.9%	28	12%	-30%	1.33	7.47	7.7%	1.2%	0.251	0.138
Gulf Cement	0.033	-0.001	-1.79%	0.33	(12.04)	12.6%	27	15%	-37%	0.01	0.23	-2.7%	-2.2%	0.060	0.029
Sharjah Cement and Industrial Development	0.042	0.000	0.00%	0.21	25.32	12.4%	26	0%	0%	0.00	0.00	0.8%	0.6%	0.064	0.042
KGL Logistics	0.027	-0.001	-4.95%	0.20	4.37	0.1%	20	8%	-28%	0.10	3.74	4.6%	2.9%	0.043	0.023
Kuwait and Gulf Link Transport	0.047	-0.004	-7.50%	0.20	14.18	0.0%	13	4%	-29%	0.06	1.32	1.4%	0.4%	0.077	0.042
Shuaiba Industrial	0.130	0.000	0.00%	0.72	40.15	7.6%	13	5%	-16%	0.00	0.00	1.8%	1.4%	0.180	0.122
National Cleaning	0.057	0.000	-0.18%	0.34	7.63	8.9%	12	10%	-17%	0.02	0.32	4.4%	1.5%	0.088	0.047
Fujairah Cement Industries	0.034	-0.001	-3.94%	0.14	16.54	12.3%	12	8%	-24%	0.01	0.17	0.8%	0.4%	0.052	0.029
Hilal Cement	0.114	0.000	0.00%	0.99	(9.37)	13.2%	12	-1%	14%	0.00	0.00	-10.6%	-6.2%	0.126	0.063
Mubarrad Holding	0.061	-0.003	-4.55%	0.48	9.81	7.7%	10	10%	-31%	0.08	1.29	4.9%	4.1%	0.089	0.049
Specialities Group Holding	0.062	-0.002	-3.72%	0.33	7.38	0.0%	10	4%	-19%	0.02	0.37	4.5%	3.5%	0.078	0.050
National Ranges	0.014	-0.001	-6.67%	0.25	(1.02)	0.0%	4	-12%	40%	0.08	5.65	-24.9%	-5.3%	0.018	0.007
Salbookh Trading	0.036	0.000	0.00%	0.49	(2.10)	0.0%	4	31%	-28%	0.00	0.13	-23.2%	-15.9%	0.051	0.026
Metal and Recycling	0.039	0.000	0.00%	0.33	(1.66)	0.0%	4	-10%	-22%	0.00	0.00	-19.7%	-10.1%	0.070	0.020
Equipment Holding	0.016	0.000	-0.62%	0.32	(184.76)	0.0%	2	8%	-27%	0.01	0.86	-0.2%	-0.1%	0.024	0.013
Total Industrials - 29 Companies				0.87	12.97	5.1%	2,722			10.61	40.29	6.67%	5.05%		

DAILY MARKET COVERAGE REPORT

NIC MENA SECURITIES - RESEARCH AND STUDIES DEP



Insurance	Price			Valuation Multiples			MKT Cap	Price Performance		Trading Indicators		ROE	ROA	52 Week (KD)	
Company	Close (KD)	Day Δ	Day % Δ	PBV(X)	PE(X)	DY%	Mn KD	MTD(%)	YTD (%)	Value (Mn KD)	(Mn Shrs)	(%)	(%)	High	Low
Gulf Insurance Group	0.715	0.000	0.00%	1.22	9.97	5.2%	133	17%	8%	0.00	0.00	12.3%	1.7%	0.720	0.550
Al Ahleia Insurance	0.400	-0.008	-1.96%	0.76	8.06	8.4%	83	5%	-2%	0.07	0.17	9.4%	3.3%	0.445	0.367
Kuwait Insurance	0.361	-0.019	-5.00%	0.59	6.99	6.6%	67	3%	9%	0.02	0.05	8.5%	4.6%	0.387	0.300
Kuwait Reinsurance	0.221	0.003	1.38%	0.84	9.46	2.0%	45	13%	60%	0.00	0.00	8.9%	3.2%	0.221	0.126
Bahrain Kuwait Insurance	0.200	0.000	0.00%	0.93	12.87	6.1%	28	0%	0%	0.00	0.00	7.2%	1.1%	0.200	0.200
Warba Insurance	0.073	-0.002	-2.54%	0.32	10.36	0.0%	12	-7%	21%	0.01	0.09	3.1%	1.0%	0.094	0.051
First Takaful Insurance	0.037	-0.001	-2.37%	0.45	4.70	0.0%	4	-7%	-3%	0.00	0.06	9.6%	5.9%	0.056	0.031
Wethaq Takaful Insurance	0.024	0.001	3.06%	0.22	(29.87)	0.0%	3	-1%	-6%	0.00	0.21	-0.7%	-0.7%	0.035	0.018
Total Insurance - 8 Companies				0.79	8.91	5.6%	374			0.10	0.58	8.86%	3.00%		

Oil and Gas	Price			Valuation Multiples			MKT Cap	Price Performance		Trading Indicators		ROE	ROA	52 Week (KD)	
Company	Close (KD)	Day Δ	Day % Δ	PBV(X)	PE(X)	DY%	Mn KD	MTD(%)	YTD (%)	Value (Mn KD)	(Mn Shrs)	(%)	(%)	High	Low
National Petroleum Services	1.100	0.000	0.00%	2.62	9.38	6.4%	107	10%	-6%	0.00	0.00	27.9%	23.6%	1.389	0.903
Independent Petroleum Group	0.430	0.000	0.00%	0.79	11.72	7.0%	78	-4%	-11%	0.00	0.00	6.8%	2.2%	0.497	0.375
Burgan for Well Drilling Trading and Maintenanc	0.078	-0.004	-4.90%	0.28	7.89	0.0%	18	13%	-3%	0.00	0.00	3.6%	1.1%	0.098	0.060
Energy House Holding	0.020	-0.001	-3.43%	0.61	(2.70)	0.0%	15	-1%	-13%	0.01	0.52	-22.5%	-17.0%	0.036	0.014
Gulf Petroleum Investment	0.018	-0.002	-7.54%	0.20	(5.93)	0.0%	8	-5%	-8%	0.56	29.13	-3.4%	-2.3%	0.023	0.012
Senergy Holding	0.019	0.000	-2.06%	0.38	(0.80)	0.0%	4	17%	-13%	0.01	0.33	-47.9%	-30.4%	0.027	0.014
Total Oil and Gas - 6 Companies				0.83	26.61	5.3%	229			0.58	29.99	3.10%	2.18%		

Real estate	Price			Valuation Multiples			MKT Cap	Price Performance		Trading Indicators		ROE	ROA	52 Week (KD)	
Company	Close (KD)	Day Δ	Day % Δ	PBV(X)	PE(X)	DY%	Mn KD	MTD(%)	YTD (%)	Value (Mn KD)	(Mn Shrs)	(%)	(%)	High	Low
Mabane Co.	0.730	-0.021	-2.80%	1.71	14.30	1.4%	807	15%	-14%	2.08	2.84	11.9%	5.8%	0.877	0.434
Salhia Real Estate	0.400	-0.006	-1.48%	1.21	9.19	5.0%	198	-1%	-6%	0.10	0.26	13.2%	5.8%	0.460	0.328
Commercial Real Estate	0.101	-0.002	-1.94%	0.62	12.51	5.7%	182	8%	10%	1.61	15.98	5.0%	2.7%	0.111	0.083
National Real Estate	0.074	-0.002	-2.36%	0.41	9.79	0.0%	112	6%	-15%	0.38	5.17	4.2%	2.4%	0.090	0.058
Tamdeen Real Estate	0.261	-0.013	-4.74%	0.38	12.73	3.9%	105	4%	-19%	0.01	0.03	3.0%	2.2%	0.343	0.241
Kuwait Real Estate	0.094	-0.003	-3.20%	0.66	11.93	0.4%	84	0%	-11%	0.28	3.05	5.5%	2.2%	0.115	0.070
United Real Estate	0.049	-0.002	-4.15%	0.28	(7.21)	0.0%	52	-3%	-21%	0.00	0.01	-3.9%	-1.2%	0.063	0.045
First Dubai for Real Estate Development	0.039	-0.003	-7.42%	0.52	42.44	1.0%	39	0%	8%	0.09	2.35	1.2%	1.0%	0.055	0.027
Al Mazaya Holding	0.053	-0.002	-3.14%	0.41	(3.76)	0.1%	33	3%	-11%	0.07	1.40	-11.0%	-3.8%	0.067	0.047
Ajial Real Estate Entertainment	0.144	0.002	1.41%	0.22	13.92	0.0%	28	9%	-16%	0.01	0.11	1.6%	1.4%	0.213	0.115
Injazzat Real Estate Development	0.079	0.000	0.00%	0.51	(3.79)	8.7%	26	7%	-1%	0.00	0.01	-13.4%	-7.0%	0.091	0.061

DAILY MARKET COVERAGE REPORT

NIC MENA SECURITIES - RESEARCH AND STUDIES DEP



Real estate Company	Price			Valuation Multiples			MKT Cap Mn KD	Price Performance		Trading Indicators		ROE (%)	ROA (%)	52 Week (KD)	
	Close (KD)	Day Δ	Day % Δ	PBV(X)	PE(X)	DY%		MTD(%)	YTD (%)	Value (Mn KD)	(Mn Shrs)			High	Low
Aayan Real Estate	0.059	-0.001	-2.17%	0.34	11.49	8.1%	24	15%	-20%	0.02	0.44	3.0%	1.9%	0.080	0.048
Al Argan International Real Estate	0.093	-0.001	-0.75%	0.27	30.14	5.3%	24	6%	-11%	0.00	0.00	0.9%	0.3%	0.135	0.060
Munshaat Real Estate Projects	0.071	-0.003	-4.32%	0.48	26.09	3.0%	23	42%	-4%	0.01	0.20	1.8%	0.7%	0.090	0.045
Ream Real Estate	0.204	0.000	0.00%	1.56	(8.21)	1.1%	22	0%	132%	0.00	0.00	-19.0%	-10.1%	0.204	0.060
Al-Enmaa Real Estate	0.047	-0.004	-6.96%	0.47	12.37	0.0%	21	8%	-25%	0.12	2.60	3.8%	2.4%	0.079	0.037
Arkan Al Kuwait Real Estate	0.081	-0.004	-4.80%	0.58	8.82	9.6%	20	-3%	-8%	0.00	0.03	6.6%	3.5%	0.100	0.076
Dalqan Real Estate	0.318	0.000	0.00%	2.91	58.98	0.0%	19	0%	0%	0.00	0.00	4.9%	4.9%	0.318	0.318
Kuwait Business Town Real Estate	0.029	-0.002	-5.16%	0.27	7.51	0.3%	18	23%	-33%	0.09	2.96	3.6%	2.7%	0.046	0.022
Sokouk Holding	0.027	-0.002	-6.80%	0.34	(4.58)	0.0%	16	18%	-22%	0.30	10.88	-7.4%	-4.7%	0.040	0.022
Tijara and Realestate Investment	0.041	0.002	4.11%	0.38	10.65	4.9%	15	-4%	-19%	0.00	0.01	3.6%	1.9%	0.055	0.034
Al-Arabiya Real Estate	0.026	-0.002	-5.38%	0.23	8.00	2.4%	13	14%	-11%	0.23	8.69	2.9%	1.1%	0.033	0.020
Aqar Real Estate Investments	0.059	-0.001	-1.00%	0.43	4.96	8.4%	13	-9%	-26%	0.00	0.02	8.7%	7.3%	0.089	0.058
Dar Al Thuraya Real Estate	0.072	0.002	2.56%	0.69	19.03	0.0%	11	-44%	3%	0.00	0.02	3.6%	3.6%	0.190	0.040
Mashaer Holding	0.058	-0.003	-4.46%	0.44	6.22	0.0%	10	6%	-26%	0.02	0.29	7.1%	5.0%	0.086	0.048
Investors Holding Group	0.016	-0.001	-7.65%	0.79	(0.75)	0.0%	10	22%	104%	0.38	23.09	-106.5%	-57.2%	0.032	0.007
Osos Holding Group	0.087	-0.003	-3.23%	0.69	6.56	10.9%	9	-8%	-13%	0.00	0.02	10.5%	7.0%	0.118	0.083
Al Massaleh Real Estate	0.035	-0.002	-4.95%	0.39	(4.82)	0.0%	8	19%	-6%	0.00	0.03	-8.1%	-1.9%	0.040	0.026
Abyaar Real Estate Development	0.007	0.000	0.00%	0.21	(0.51)	0.0%	8	0%	-6%	0.00	0.00	-40.9%	-12.4%	0.013	0.005
Kuwait Remal Real Estate	0.020	-0.001	-4.74%	0.30	(2.76)	0.0%	6	39%	-18%	0.00	0.05	-11.0%	-3.9%	0.027	0.013
Kuwait Real Estate Holding	0.026	0.000	0.00%	0.04	0.69	6.8%	5	2%	-9%	0.00	0.00	5.5%	2.2%	0.034	0.022
Taameer Real Estate Investment	0.019	-0.001	-3.61%	0.28	(3.96)	0.0%	4	-1%	-29%	0.04	1.91	-7.0%	-4.5%	0.034	0.013
Sanam Real Estate	0.035	0.000	0.00%	0.44	47.40	0.0%	4	17%	-12%	0.00	0.00	0.9%	0.9%	0.043	0.027
Mena Real Estate	0.028	-0.002	-5.07%	0.19	(62.63)	0.0%	4	15%	-32%	0.17	6.03	-0.3%	-0.2%	0.043	0.021
Al Masaken International Real Estate Developr	0.036	0.000	0.00%	0.40	43.60	0.5%	4	15%	-18%	0.00	0.00	0.9%	0.4%	0.074	0.026
Real Estate Trade Centers	0.027	-0.001	-3.57%	0.15	154.27	0.0%	3	7%	16%	0.00	0.16	0.1%	0.1%	0.050	0.018
Ajwan Gulf Real Estate	0.011	0.000	0.00%	0.19	(7.68)	0.0%	2	0%	-29%	0.00	0.00	-2.5%	-2.2%	0.016	0.009
Effect Real Estate	0.021	0.000	0.00%	0.29	(8.85)	4.9%	2	0%	0%	0.00	0.00	-3.3%	-3.2%	0.021	0.021
Al Mudon International Real Estate	0.016	0.000	0.00%	0.12	(8.22)	0.0%	2	0%	-35%	0.00	0.00	-1.5%	-1.4%	0.029	0.015
Total Real estate - 39 Companies				0.65	23.26	2.4%	1,987			6.05	88.62	2.79%	2.96%		

DAILY MARKET COVERAGE REPORT

NIC MENA SECURITIES - RESEARCH AND STUDIES DEP



Technology	Price			Valuation Multiples			MKT Cap	Price Performance		Trading Indicators		ROE	ROA	52 Week (KD)	
	Company	Close (KD)	Day Δ	Day % Δ	PBV(X)	PE(X)		DY%	Mn KD	MTD(%)	YTD (%)			Value (Mn KD)	(Mn Shrs)
Automated Systems	0.070	-0.002	-2.36%	0.55	(68.29)	5.7%	7	3%	-1%	0.03	0.40	-0.8%	-0.7%	0.087	0.051
Total Technology - 1 Companies				0.55	(68.29)	5.7%	7			0.03	0.40	-0.81%	-0.73%		

Telecom	Price			Valuation Multiples			MKT Cap	Price Performance		Trading Indicators		ROE	ROA	52 Week (KD)	
	Company	Close (KD)	Day Δ	Day % Δ	PBV(X)	PE(X)		DY%	Mn KD	MTD(%)	YTD (%)			Value (Mn KD)	(Mn Shrs)
Mobile Telecommunications	0.574	-0.008	-1.37%	1.91	11.45	5.4%	2,484	-3%	-5%	4.32	7.53	16.7%	4.6%	0.604	0.407
Kuwait Telecommunications	0.840	0.000	0.00%	1.95	9.62	4.2%	419	-1%	7%	0.02	0.03	20.2%	11.1%	0.870	0.680
National Mobile Telecommunications	0.602	-0.009	-1.47%	0.53	10.01	10.7%	302	4%	-27%	0.15	0.25	5.3%	2.4%	0.835	0.550
AAN Digital Services	0.013	-0.001	-5.15%	0.38	42.08	0.0%	11	23%	-5%	0.62	46.61	0.9%	0.7%	0.021	0.009
Hayat Communications	0.059	0.000	0.00%	0.50	24.83	0.0%	5	-29%	-22%	0.00	0.00	2.0%	0.8%	0.098	0.033
Telecom - 5 Companies				1.52	11.06	5.7%	3,221			5.12	54.42	13.70%	7.86%		

Utilities	Price			Valuation Multiples			MKT Cap	Price Performance		Trading Indicators		ROE	ROA	52 Week (KD)	
	Company	Close (KD)	Day Δ	Day % Δ	PBV(X)	PE(X)		DY%	Mn KD	MTD(%)	YTD (%)			Value (Mn KD)	(Mn Shrs)
Shamal Az-Zour Al-Oula Power & Water	0.320	-0.013	-3.90%	4.59	28.62	0.0%	352	0%	0%	4.45	13.75	16.1%	2.3%	0.500	0.297
Total Utilities - 1 Companies				4.59	28.62	0.0%	352			4.45	13.75	16.06%	2.26%		

Total Market 173 Companies				1.26	15.24	3.86%	31.56			104.05	545.53	8.26%	2.76%		
-----------------------------------	--	--	--	-------------	--------------	--------------	--------------	--	--	---------------	---------------	--------------	--------------	--	--

End of Report

The information contained in this document is proprietary to NIC and is for use only by the persons to whom it is issued. This document is confidential and may not be distributed either in part or in whole without the express agreement of NIC. It is intended solely for the use of the individual or entity to whom it is addressed and others authorized to receive it.



شركة الاستثمار الوطنية
NATIONAL INVESTMENTS COMPANY

Sharq, Al Mutanabi Street, Khaleejia Tower | P.O. Box 25667, Safat 13117, Kuwait

T.: +965 2226 6666 | Fax: +965 2226 6793 | www.nic.com.kw