



شركة الاستثمارات الوطنية
NATIONAL INVESTMENTS COMPANY

Bursa Kuwait – Daily Market Report
MENA Securities – Research & Studies Dep.

Wednesday, October 7, 2020

DAILY MARKET COVERAGE REPORT

NIC MENA SECURITIES - RESEARCH AND STUDIES DEP



Index	Close	DTD Chg Net	DTD (%)	YTD (%)	52W High	52W Low	MKT CAP Bn (KD)	PBV (X)	PE (X)	DY (%)
All Share Index	5,689.49	43.95	0.78%	-9.4%	6,416.43	4,339.58	32.97	1.32	15.92	3.69%
Premier Index	6,325.17	53.16	0.85%	-9.2%	7,172.32	4,498.65	24.70	1.78	14.85	3.38%
Main Index	4,425.10	25.19	0.57%	-10.0%	4,932.47	3,965.63	8.27	0.74	20.33	4.62%
NIC 50 Index	6,986.93	110.59	1.61%	-6.3%	7,517.86	5,014.61	28.41	1.56	15.46	3.51%

Index	Value Mn(KD)	Volume (Mn share)
All Share Index	71.26	374.10
Premier Index	56.37	137.58
Main Index	14.89	236.52
NIC 50 Index	68.18	308.31

Market Breadth	UP	Down	No Chg
All Share Index	68	43	62
Premier Index	17	3	0
Main Index	51	40	62
NIC 50 Index	34	11	5

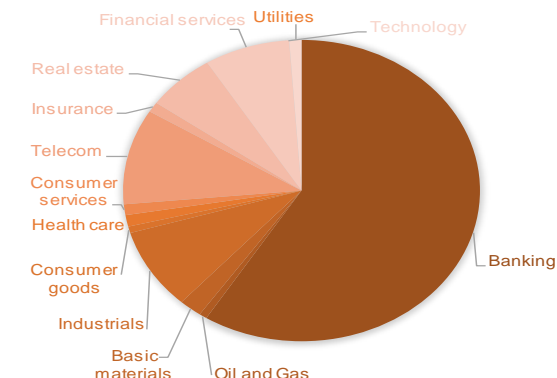
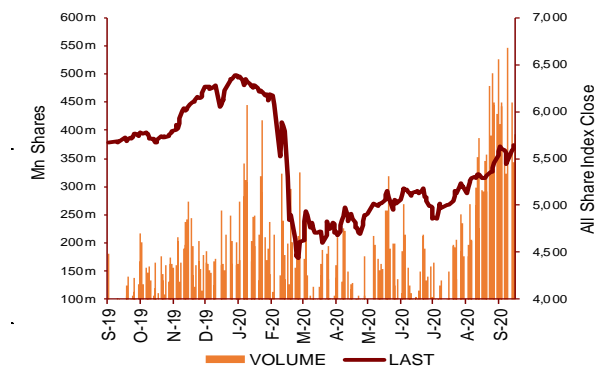
Today's Top 5 Gainer %	Close KD	Value KD	DTD (%)
Al Ahli Bank of Kuwait	0.212	1,807,564	6.00%
Gulf Cement	0.034	1,531	5.94%
Kuwait International Bank	0.216	6,499,602	5.88%
Coast Investment and Developme	0.038	106,405	4.64%
Livestock Transport and Tradin	0.193	179,152	4.32%

Today's Top 5 Loser %	Close KD	Value KD	DTD (%)
Energy House Holding	0.024	144,232	-9.33%
Arkan Al Kuwait Real Estat	0.085	655	-4.92%
Al Massaleh Real Estate	0.035	420	-4.86%
Munshaat Real Estate Proj	0.078	45,790	-4.76%
Warba Capital Holding	0.046	63,210	-4.17%

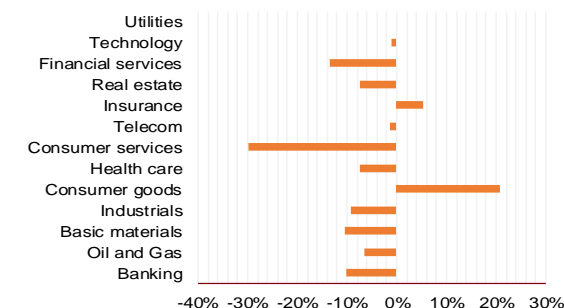
Today's Top 5 by Value	Close KD	Trade Val Mn(KD)	DTD (%)
Kuwait Finance House	0.699	11.06	0.87%
National Bank of Kuwait	0.898	7.69	0.45%
Kuwait International Bank	0.216	6.50	5.88%
Mobile Telecommunications	0.608	5.96	1.84%
Agility Public Warehousing	0.700	4.99	1.89%

Top 5 by Volume	Close KD	Trade Vol Mn(Shrs)	DTD (%)
Investors Holding Group	0.018	33.72	2.31%
Kuwait International Bank	0.216	30.36	5.88%
Arzan Financial Group for f	0.060	25.73	-4.03%
Gulf Petroleum Investment	0.021	21.58	3.40%
Aayan Leasing and Investrn	0.090	18.38	-1.09%

Sector	Close	DTD Chg Net	DTD (%)	YTD (%)	52W High	52W Low	MKT CAP Bn (KD)	PBV (X)	PE (X)	DY (%)
Banking	1,334.09	10.460	0.79%	-10.0%	1,536.8	986.4	19.44	1.77	16.20	3.2%
Oil and Gas	1,157.11	-7.910	-0.68%	-6.5%	1,372.2	985.7	0.23	0.84	27.09	5.2%
Basic materials	813.46	8.030	1.00%	-10.4%	991.8	561.7	0.68	0.98	14.95	7.4%
Industrials	842.90	9.900	1.19%	-9.1%	937.5	602.9	2.88	0.91	13.71	4.8%
Consumer goods	769.44	-4.590	-0.59%	20.8%	810.7	548.6	0.23	1.53	93.25	2.2%
Health care	820.13	0.000	0.00%	-7.3%	911.8	815.0	0.41	4.14	48.09	1.0%
Consumer services	753.45	-0.980	-0.13%	-29.7%	1,083.1	674.8	0.38	0.86	36.19	4.6%
Telecom	1,103.21	17.220	1.59%	-1.2%	1,116.7	802.2	3.38	1.59	11.61	5.5%
Insurance	1,004.73	-8.640	-0.85%	5.3%	1,068.3	901.0	0.36	0.76	8.53	5.8%
Real estate	979.52	1.310	0.13%	-7.5%	1,083.4	763.2	2.06	0.67	24.12	2.4%
Financial services	935.93	4.370	0.47%	-13.5%	1,097.0	801.4	2.55	0.73	16.54	4.1%
Technology	509.25	-18.190	-3.45%	-1.1%	632.9	371.0	0.01	0.55	-67.90	5.7%
Utilities	865.79	2.630	0.30%	0.0%	1,042.1	781.6	0.36	4.72	29.42	0.0%
	5,689.49	43.95	0.78%	-9.4%	6,416.4	4,339.6	32.97	1.32	15.92	3.69%



YTD Sector Performance %



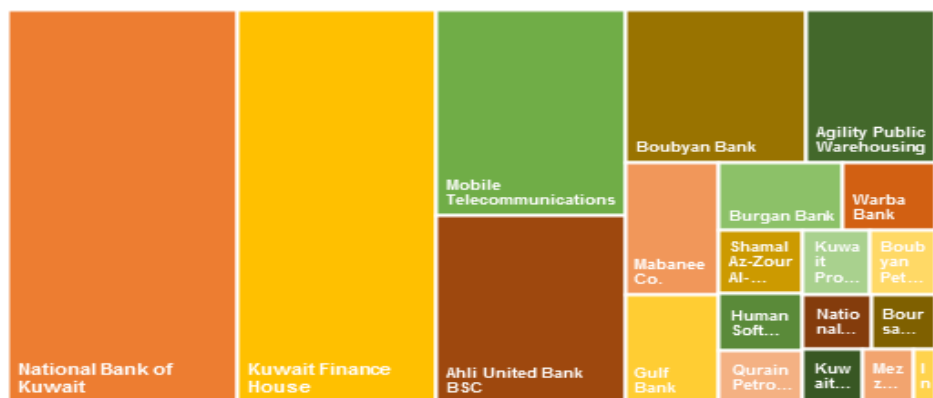
DAILY MARKET COVERAGE REPORT

NIC MENA SECURITIES - RESEARCH AND STUDIES DEP

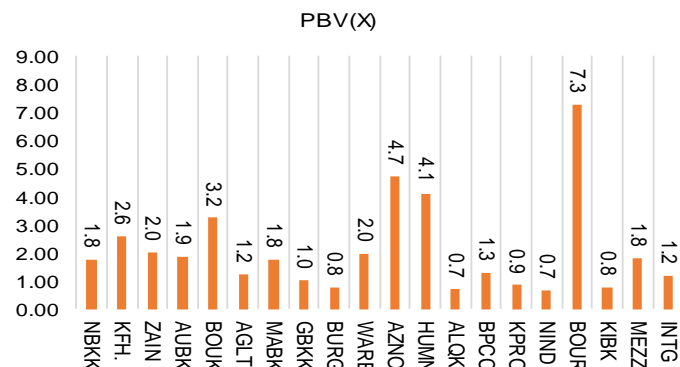


Premier Market	Price			Valuation Multiples			MKT Cap	Price Performance		Trading Indicators		ROE	ROA	52 Week (KD)		MKT Cap
	Close (KD)	Day Δ	Day % Δ	PBV(X)	PE(X)	DY%	Mn KD	MTD(%)	YTD (%)	Value (Mn KD)	(Mn Shrs)	(%)	(%)	High	Low	%
National Bank of Kuwait	0.898	0.004	0.45%	1.78	15.20	3.5%	6,098	3%	-12%	7.69	8.58	11.7%	1.4%	1.062	0.654	24.69%
Kuwait Finance House	0.699	0.006	0.87%	2.57	21.13	2.4%	5,305	6%	-5%	11.06	15.89	12.2%	1.3%	0.761	0.473	21.47%
Mobile Telecommunications	0.608	0.011	1.84%	2.03	12.13	5.1%	2,631	6%	2%	5.96	9.82	16.7%	4.6%	0.604	0.407	10.65%
Ahli United Bank BSC	0.248	0.001	0.40%	1.87	10.92	4.9%	2,394	6%	-16%	2.97	12.03	17.1%	1.8%	0.311	0.160	9.69%
Boubyan Bank	0.615	0.001	0.16%	3.24	29.72	1.0%	1,862	4%	1%	1.27	2.06	10.9%	1.2%	0.638	0.380	7.54%
Agility Public Warehousing	0.700	0.013	1.89%	1.22	15.44	2.6%	1,339	7%	-2%	4.99	7.17	7.9%	4.2%	0.748	0.357	5.42%
Mabane Co.	0.757	-0.001	-0.13%	1.77	14.83	1.4%	837	4%	-11%	0.69	0.91	11.9%	5.8%	0.877	0.434	3.39%
Gulf Bank	0.237	0.004	1.72%	1.04	10.82	4.2%	688	7%	-22%	2.80	11.87	9.6%	1.0%	0.317	0.180	2.79%
Burgan Bank	0.219	0.003	1.39%	0.76	6.78	5.2%	574	9%	-28%	0.88	4.02	11.3%	1.2%	0.324	0.175	2.32%
Warba Bank	0.272	0.004	1.49%	1.97	25.90	0.0%	428	10%	4%	3.59	13.25	7.6%	0.5%	0.279	0.164	1.73%
Shamal Az-Zour Al-Oula Power & Water	0.329	0.001	0.30%	4.72	29.42	0.0%	362	3%	0%	0.81	2.45	16.1%	2.3%	0.500	0.297	1.46%
Human Soft Holding	2.718	-0.012	-0.44%	4.11	9.22	6.8%	331	5%	-10%	1.70	0.63	44.6%	30.3%	3.470	1.944	1.34%
Qurain Petrochemical Industries	0.293	0.004	1.38%	0.71	10.60	5.2%	299	7%	-5%	0.60	2.06	6.7%	3.6%	0.323	0.163	1.21%
Boubyan Petrochemical	0.571	0.005	0.88%	1.29	24.36	9.0%	288	5%	-13%	0.62	1.08	5.3%	2.1%	0.800	0.395	1.17%
Kuwait Projects Company Holding	0.160	0.003	1.91%	0.86	9.66	5.8%	290	6%	-26%	0.23	1.42	8.9%	0.3%	0.225	0.147	1.17%
National Industries Group Holding	0.179	0.001	0.56%	0.68	5.51	6.0%	256	8%	-26%	1.74	9.78	12.3%	3.7%	0.247	0.121	1.03%
Boursa Kuwait Securities Co	1.160	0.004	0.35%	7.26	24.28	0.0%	233	2%	0%	0.71	0.61	29.9%	26.5%	1.210	0.990	0.94%
Kuwait International Bank	0.216	0.012	5.88%	0.78	12.84	4.6%	220	17%	-16%	6.50	30.36	6.1%	0.6%	0.270	0.162	0.89%
Mezzan Holding	0.619	-0.010	-1.59%	1.79	33.45	2.7%	189	0%	25%	0.57	0.91	5.3%	2.2%	0.665	0.428	0.76%
Integrated Holding	0.370	0.008	2.21%	1.19	10.31	10.8%	81	3%	-33%	0.99	2.69	11.5%	8.5%	0.600	0.342	0.33%
Total		53.16	0.85%	1.78	14.85	3.38%	24,705	5.2%	-9.2%	56.37	137.58	12.01%	1.56%			100%

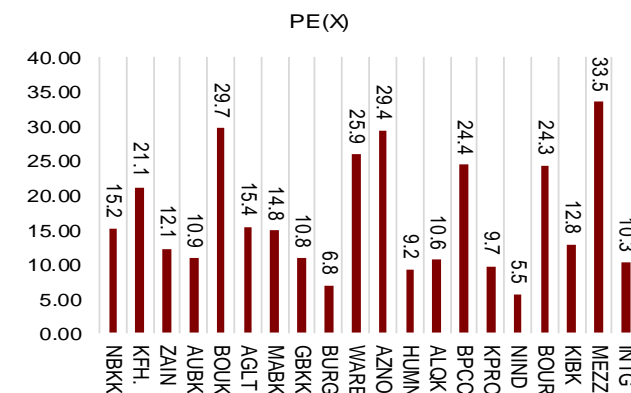
Market Capitalization



Price to Book Value



Price to Earning Value

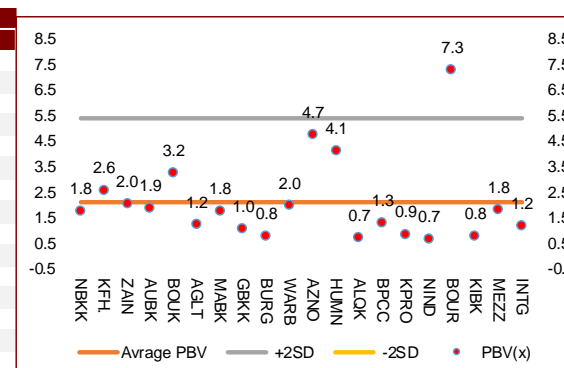


DAILY MARKET COVERAGE REPORT

NIC MENA SECURITIES - RESEARCH AND STUDIES DEP



Premier Market Company	Price			Valuation Multiples			MKT Cap Mn KD	Price Performance		ROE (%)	ROA (%)
	Close (KD)	Day Δ	Day % Δ	PBV(X)	PE(X)	DY%		MTD(%)	YTD (%)		
National Bank of Kuwait	0.898	0.004	0.45%	1.78	15.2	3.5%	6,098	3.1%	-12.0%	11.7%	1.4%
Kuwait Finance House	0.699	0.006	0.87%	2.57	21.1	2.4%	5,305	5.9%	-5.1%	12.2%	1.3%
Mobile Telecommunications	0.608	0.011	1.84%	2.03	12.1	5.1%	2,631	6.3%	1.7%	16.7%	4.6%
Ahli United Bank BSC	0.248	0.001	0.40%	1.87	10.9	4.9%	2,394	6.0%	-15.5%	17.1%	1.8%
Boubyan Bank	0.615	0.001	0.16%	3.24	29.7	1.0%	1,862	3.9%	1.2%	10.9%	1.2%
Agility Public Warehousing	0.700	0.013	1.89%	1.22	15.4	2.6%	1,339	6.5%	-1.6%	7.9%	4.2%
Mabane Co.	0.757	-0.001	-0.13%	1.77	14.8	1.4%	837	4.1%	-11.0%	11.9%	5.8%
Gulf Bank	0.237	0.004	1.72%	1.04	10.8	4.2%	688	7.3%	-22.1%	9.6%	1.0%
Burgan Bank	0.219	0.003	1.39%	0.76	6.8	5.2%	574	8.9%	-27.6%	11.3%	1.2%
Warba Bank	0.272	0.004	1.49%	1.97	25.9	0.0%	428	9.6%	4.2%	7.6%	0.5%
Shamal Az-Zour Al-Oula Power & Water	0.329	0.001	0.30%	4.72	29.4	0.0%	362	3.1%	0.0%	16.1%	2.3%
Human Soft Holding	2.718	-0.012	-0.44%	4.11	9.2	6.8%	331	4.8%	-9.5%	44.6%	30.3%
Qurain Petrochemical Industries	0.293	0.004	1.38%	0.71	10.6	5.2%	299	6.9%	-5.5%	6.7%	3.6%
Boubyan Petrochemical	0.571	0.005	0.88%	1.29	24.4	9.0%	288	5.5%	-13.2%	5.3%	2.1%
Kuwait Projects Company Holding	0.160	0.003	1.91%	0.86	9.7	5.8%	290	6.0%	-25.9%	8.9%	0.3%
National Industries Group Holding	0.179	0.001	0.56%	0.68	5.5	6.0%	256	7.8%	-25.7%	12.3%	3.7%
Boursa Kuwait Securities Co	1.160	0.004	0.35%	7.26	24.3	0.0%	233	1.8%	0.0%	29.9%	26.5%
Kuwait International Bank	0.216	0.012	5.88%	0.78	12.8	4.6%	220	17.2%	-16.5%	6.1%	0.6%
Mezzan Holding	0.619	-0.010	-1.59%	1.79	33.5	2.7%	189	0.2%	24.8%	5.3%	2.2%
Integrated Holding	0.370	0.008	2.21%	1.19	10.3	10.8%	81	3.1%	-32.8%	11.5%	8.5%
Total		53.16	0.85%	1.78	14.85	3.38%	24,705	5.2%	-9.2%	12.01%	1.56%



Premier Market Discription	Price			Moving Average			RSI 14 Day	MKT Cap Mn KD	Price Performance		52 Week (KD)	
	Close (KD)	Day Δ	Day % Δ	50 Day	200 Day	74			MTD(%)	YTD (%)	High	Low
Premier Index	6,325	53.16	0.85%	5,795	5,873	74	24,705	5.2%	-9.2%	7,172	4,499	

Top 5 Performrs (Today's Price Change)

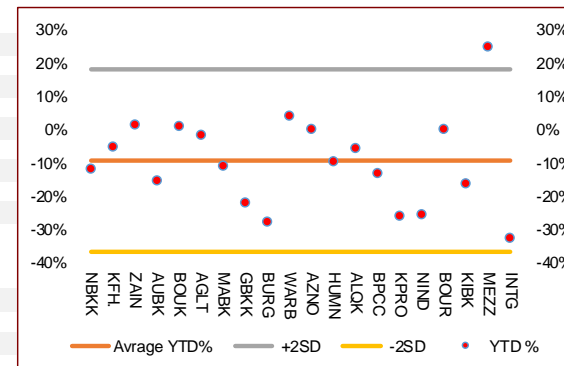
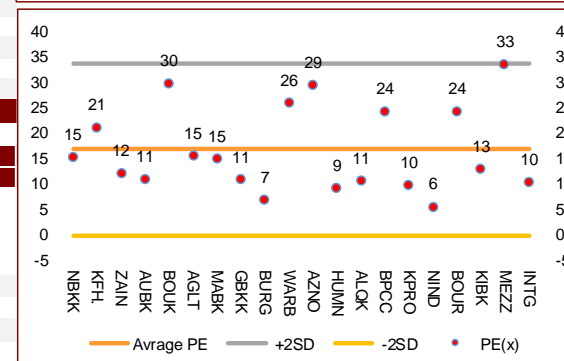
Kuwait International Bank	0.216	0.012	5.88%	0.177	0.203	71	220	17.2%	-16.5%	0.270	0.162
Integrated Holding	0.370	0.008	2.21%	0.372	0.446	33	81	3.1%	-32.8%	0.600	0.342
Kuwait Projects Company Holding	0.160	0.003	1.91%	0.152	0.177	63	290	6.0%	-25.9%	0.225	0.147
Agility Public Warehousing	0.700	0.013	1.89%	0.640	0.613	75	1,339	6.5%	-1.6%	0.748	0.357
Mobile Telecommunications	0.608	0.011	1.84%	0.573	0.548	69	2,631	6.3%	1.7%	0.604	0.407

Middel Performrs (Today's Price Change)

Gulf Bank	0.237	0.004	1.72%	0.211	0.236	69	688	7.3%	-22.1%	0.317	0.180
Warba Bank	0.272	0.004	1.49%	0.215	0.220	74	428	9.6%	4.2%	0.279	0.164
Burgan Bank	0.219	0.003	1.39%	0.196	0.228	69	574	8.9%	-27.6%	0.324	0.175
Qurain Petrochemical Industries	0.293	0.004	1.38%	0.281	0.266	67	299	6.9%	-5.5%	0.323	0.163
Boubyan Petrochemical	0.571	0.005	0.88%	0.552	0.572	74	288	5.5%	-13.2%	0.800	0.395
Kuwait Finance House	0.699	0.006	0.87%	0.626	0.639	74	5,305	5.9%	-5.1%	0.761	0.473
National Industries Group Holding	0.179	0.001	0.56%	0.163	0.184	63	256	7.8%	-25.7%	0.247	0.121
National Bank of Kuwait	0.898	0.004	0.45%	0.841	0.848	65	6,098	3.1%	-12.0%	1.062	0.654
Ahli United Bank BSC	0.248	0.001	0.40%	0.219	0.227	76	2,394	6.0%	-15.5%	0.311	0.160
Boursa Kuwait Securities Co	1.160	0.004	0.35%	0.100	0.100	67	233	1.8%	0.0%	1.210	0.996

Bottom 5 Performrs (Today's Price Change)

Mezzan Holding	0.619	-0.010	-1.59%	0.621	0.557	58	189	0.2%	24.8%	0.665	0.428
Human Soft Holding	2.718	-0.012	-0.44%	2.653	2.790	45	331	4.8%	-9.5%	3.470	1.944
Mabane Co.	0.757	-0.001	-0.13%	0.661	0.683	82	837	4.1%	-11.0%	0.877	0.434
Boubyan Bank	0.615	0.001	0.16%	0.569	0.545	74	1,862	3.9%	1.2%	0.638	0.380
Shamal Az-Zour Al-Oula Power & Water	0.329	0.001	0.30%	0.231	0.058	43	362	3.1%	0.0%	0.500	0.297



DAILY MARKET COVERAGE REPORT

NIC MENA SECURITIES - RESEARCH AND STUDIES DEP



Banking Sector	Price			Valuation Multiples			MKT Cap	Price Performance		Trading Indicators		ROE	ROA	52 Week (KD)		MKT Cap
	Company	Close (KD)	Day Δ	Day % Δ	PBV(X)	PE(X)		DY%	Mn KD	MTD(%)	YTD (%)			Value (Mn KD)	(Mn Shrs)	
National Bank of Kuwait	0.898	0.004	0.45%	1.78	15.20	3.5%	6,098	3%	-12%	7.69	8.58	11.7%	1.4%	1.062	0.654	18.50%
Kuwait Finance House	0.699	0.006	0.87%	2.57	21.13	2.4%	5,305	6%	-5%	11.06	15.89	12.2%	1.3%	0.761	0.473	16.09%
Ahli United Bank BSC	0.248	0.001	0.40%	1.87	10.92	4.9%	2,394	6%	-16%	2.97	12.03	17.1%	1.8%	0.311	0.160	7.26%
Boubyan Bank	0.615	0.001	0.16%	3.24	29.72	1.0%	1,862	4%	1%	1.27	2.06	10.9%	1.2%	0.638	0.380	5.65%
Commercial Bank of Kuwait	0.500	0.000	0.00%	1.32	0.00	3.7%	965	0%	-5%	0.00	0.00	0.0%	0.0%	0.555	0.465	2.93%
Gulf Bank	0.237	0.004	1.72%	1.04	10.82	4.2%	688	7%	-22%	2.80	11.87	9.6%	1.0%	0.317	0.180	2.09%
Burgan Bank	0.219	0.003	1.39%	0.76	6.78	5.2%	574	9%	-28%	0.88	4.02	11.3%	1.2%	0.324	0.175	1.74%
Ahli United Bank	0.289	0.005	1.76%	1.24	10.24	4.7%	564	7%	-11%	0.47	1.63	12.1%	1.3%	0.330	0.225	1.71%
Warba Bank	0.272	0.004	1.49%	1.97	25.90	0.0%	428	10%	4%	3.59	13.25	7.6%	0.5%	0.279	0.164	1.30%
Al Ahli Bank of Kuwait	0.212	0.012	6.00%	0.61	11.87	6.6%	340	13%	-18%	1.81	8.65	5.1%	0.6%	0.303	0.156	1.03%
Kuwait International Bank	0.216	0.012	5.88%	0.78	12.84	4.6%	220	17%	-16%	6.50	30.36	6.1%	0.6%	0.270	0.162	0.67%
Total Banking Sector - 11 Companies				1.77	16.20	3.2%	19,439			39.04	108.34	10.90%	1.21%			58.96%

Basic materials	Price			Valuation Multiples			MKT Cap	Price Performance		Trading Indicators		ROE	ROA	52 Week (KD)		MKT Cap
	Company	Close (KD)	Day Δ	Day % Δ	PBV(X)	PE(X)		DY%	Mn KD	MTD(%)	YTD (%)			Value (Mn KD)	(Mn Shrs)	
Qurain Petrochemical Industries	0.293	0.004	1.38%	0.71	10.60	5.2%	299	7%	-5%	0.60	2.06	6.7%	3.6%	0.323	0.163	0.91%
Boubyan Petrochemical	0.571	0.005	0.88%	1.29	24.36	9.0%	288	5%	-13%	0.62	1.08	5.3%	2.1%	0.800	0.395	0.87%
Al Kout Industrial Projects	0.769	0.000	0.00%	2.50	16.21	6.5%	78	0%	-10%	0.00	0.00	15.4%	11.3%	0.850	0.769	0.24%
Kuwait Foundry	0.264	0.002	0.76%	0.88	21.34	20.2%	19	2%	-21%	0.00	0.00	4.1%	3.8%	0.490	0.192	0.06%
Total Basic materials - 4 Companies				0.98	14.95	7.4%	684			1.22	3.13	6.57%	5.07%			2.07%

Consumer goods	Price			Valuation Multiples			MKT Cap	Price Performance		Trading Indicators		ROE	ROA	52 Week (KD)		MKT Cap
	Company	Close (KD)	Day Δ	Day % Δ	PBV(X)	PE(X)		DY%	Mn KD	MTD(%)	YTD (%)			Value (Mn KD)	(Mn Shrs)	
Mezzan Holding	0.619	-0.010	-1.59%	1.79	33.45	2.7%	189	0%	25%	0.57	0.91	5.3%	2.2%	0.665	0.428	0.57%
Livestock Transport and Trading	0.193	0.008	4.32%	1.01	34.40	0.1%	40	5%	10%	0.18	0.94	2.9%	2.0%	0.200	0.152	0.12%
Danah Al Safat Foodstuff	0.012	0.000	0.00%	0.25	(0.30)	0.1%	1	0%	-25%	0.00	0.00	-84.8%	-43.2%	0.029	0.010	0.00%
Total Basic materials - 3 Companies				1.53	93.25	2.2%	230			0.75	1.85	1.64%	0.90%			0.70%

DAILY MARKET COVERAGE REPORT

NIC MENA SECURITIES - RESEARCH AND STUDIES DEP



Consumer services																
Company	Price			Valuation Multiples			MKT Cap	Price Performance		Trading Indicators		ROE	ROA	52 Week (KD)		MKT Cap
	Close (KD)	Day Δ	Day % Δ	PBV(X)	PE(X)	DY%	Mn KD	MTD(%)	YTD (%)	Value (Mn KD)	(Mn Shrs)	(%)	(%)	High	Low	%
Jazeera Airways	0.588	-0.002	-0.34%	2.92	7.87	6.0%	118	0%	-46%	0.14	0.24	37.1%	9.0%	1.110	0.372	0.36%
Kuwait National Cinema	0.724	0.000	0.00%	0.83	7.83	6.7%	67	3%	-31%	0.00	0.00	10.6%	7.2%	1.050	0.600	0.20%
Oula Fuel Marketing	0.112	-0.001	-0.88%	0.67	11.72	5.3%	45	1%	-12%	0.02	0.17	5.7%	3.2%	0.134	0.095	0.14%
Al Soor Fuel Marketing	0.111	0.000	0.00%	0.68	12.99	4.5%	45	1%	-11%	0.00	0.03	5.3%	3.7%	0.129	0.096	0.14%
Sultan Center Food Products	0.055	0.001	1.85%	0.68	13.84	0.0%	31	4%	6%	0.07	1.20	4.9%	0.7%	0.060	0.036	0.09%
Jiyad Holding	0.047	0.001	1.09%	0.42	9.28	0.0%	16	16%	19%	0.02	0.47	4.5%	2.8%	0.047	0.029	0.05%
IFA Hotels and Resorts	0.023	-0.001	-2.54%	0.83	(0.63)	0.0%	14	0%	-58%	0.05	2.09	-131.5%	-8.1%	0.062	0.021	0.04%
Kuwait Resorts	0.056	0.000	-0.18%	0.38	10.15	0.0%	11	6%	-5%	0.06	1.08	3.8%	3.2%	0.060	0.038	0.03%
Alrai Media Group	0.037	0.000	0.00%	0.83	(2.41)	0.0%	9	0%	-2%	0.00	0.00	-34.2%	-20.0%	0.045	0.031	0.03%
Future Kid Entertainment and Real Estate	0.072	0.000	0.00%	0.42	27.28	16.0%	8	-10%	-18%	0.00	0.00	1.5%	0.9%	0.110	0.069	0.02%
Al Eid Food	0.060	0.000	0.00%	0.40	4.79	0.0%	7	4%	-9%	0.01	0.11	8.4%	6.1%	0.080	0.038	0.02%
Kuwait Hotels	0.100	-0.001	-0.70%	1.41	(5.78)	0.0%	6	-6%	0%	0.00	0.00	-24.4%	-13.2%	0.111	0.069	0.02%
Palms Agro Production	0.079	0.000	0.00%	0.66	(55.41)	12.7%	4	21%	96%	0.00	0.00	-1.2%	-0.9%	0.079	0.025	0.01%
Kuwait Cable Vision	0.014	0.000	0.00%	0.52	(11.65)	0.0%	1	0%	0%	0.00	0.00	-4.5%	-3.0%	0.026	0.012	0.00%
Total Consumer services - 14 Companies				0.86	36.19	4.6%	381			0.37	5.41	2.38%	2.72%			1.16%

Financial services																
Company	Price			Valuation Multiples			MKT Cap	Price Performance		Trading Indicators		ROE	ROA	52 Week (KD)		MKT Cap
	Close (KD)	Day Δ	Day % Δ	PBV(X)	PE(X)	DY%	Mn KD	MTD(%)	YTD (%)	Value (Mn KD)	(Mn Shrs)	(%)	(%)	High	Low	%
Egypt Kuwait Holding	0.365	0.000	0.00%	2.16	12.32	5.4%	374	0%	-19%	0.00	0.00	17.6%	7.1%	0.500	0.318	1.13%
Kuwait Projects Company Holding	0.160	0.003	1.91%	0.86	9.66	5.8%	290	6%	-26%	0.23	1.42	8.9%	0.3%	0.225	0.147	0.88%
National Industries Group Holding	0.179	0.001	0.56%	0.68	5.51	6.0%	256	8%	-26%	1.74	9.78	12.3%	3.7%	0.247	0.121	0.78%
Boursa Kuwait Securities Co	1.160	0.004	0.35%	7.26	24.28	0.0%	233	2%	0%	0.71	0.61	29.9%	26.5%	1.210	0.990	0.71%
GFH Financial Group	0.047	0.000	0.00%	0.51	6.42	6.0%	159	-4%	-32%	0.07	1.46	8.0%	1.3%	0.074	0.042	0.48%
National Investments	0.142	0.004	2.90%	0.63	10.56	5.7%	113	7%	3%	0.72	5.06	5.9%	5.0%	0.158	0.080	0.34%
Tamdeen Investment	0.318	0.000	0.00%	0.39	13.19	3.7%	109	4%	-8%	0.00	0.00	3.0%	2.2%	0.400	0.199	0.33%
Alimtiq Investment Group	0.098	0.001	0.93%	0.47	5.10	8.1%	101	7%	-22%	0.41	4.14	9.1%	5.2%	0.137	0.071	0.31%
Commercial Facilities	0.183	-0.002	-1.08%	0.57	7.05	9.2%	93	1%	-16%	0.16	0.87	8.0%	4.2%	0.235	0.179	0.28%
Aayan Leasing and Investment	0.090	-0.001	-1.09%	1.06	(4.96)	2.0%	72	4%	94%	1.66	18.38	-21.4%	-4.9%	0.102	0.032	0.22%
Kuwait Investment	0.136	0.005	3.82%	0.59	4.26	7.4%	75	6%	-9%	0.37	2.69	13.9%	6.0%	0.172	0.095	0.23%
Noor Financial Investment	0.169	0.001	0.60%	1.03	8.26	2.9%	67	8%	42%	0.03	0.16	12.5%	7.5%	0.184	0.076	0.20%

DAILY MARKET COVERAGE REPORT

NIC MENA SECURITIES - RESEARCH AND STUDIES DEP



Financial services Company	Price			Valuation Multiples			MKT Cap	Price Performance		Trading Indicators		ROE	ROA	52 Week (KD)		MKT Cap
	Close (KD)	Day Δ	Day % Δ	PBV(X)	PE(X)	DY%	Mn KD	MTD(%)	YTD (%)	Value (Mn KD)	(Mn Shrs)	(%)	(%)	High	Low	%
Arzan Financial Group for Financing and Invest	0.060	-0.003	-4.03%	0.48	43.26	0.0%	47	6%	151%	1.55	25.73	1.1%	0.7%	0.064	0.022	0.14%
Kuwait Financial Centre	0.087	0.001	1.28%	0.44	5.97	5.7%	42	2%	-19%	0.10	1.21	7.3%	3.5%	0.121	0.070	0.13%
Gulf Investment House	0.098	0.000	0.00%	1.10	181.27	0.0%	40	4%	52%	0.01	0.09	0.6%	0.5%	0.108	0.038	0.12%
Al Bareeq Holding	0.076	0.000	0.00%	0.80	15.18	0.0%	33	-4%	-24%	0.02	0.21	5.2%	5.0%	0.110	0.072	0.10%
Arabi Group Holdings	0.198	0.000	0.00%	1.07	(19.90)	0.0%	33	0%	-28%	0.00	0.00	-5.4%	-0.6%	0.337	0.090	0.10%
Kuwait and Middle East Financial Investment	0.109	-0.003	-2.68%	1.77	43.53	0.0%	29	-1%	22%	0.01	0.10	4.1%	3.2%	0.138	0.063	0.09%
Privatization Holding	0.044	0.000	-0.90%	0.32	(39.76)	0.0%	27	4%	-12%	0.01	0.16	-0.8%	-0.5%	0.059	0.037	0.08%
Asiya Capital Investments	0.033	-0.001	-3.83%	0.35	16.80	0.2%	25	2%	-20%	0.00	0.02	2.1%	2.0%	0.041	0.029	0.08%
Umm Al Qaiwain General Investment Co	0.072	0.000	0.00%	0.48	13.53	5.1%	26	0%	8%	0.00	0.00	3.6%	3.3%	0.096	0.052	0.08%
Securities House	0.047	0.000	0.21%	0.64	(68.42)	0.0%	26	7%	2%	0.34	7.32	-0.9%	-0.7%	0.050	0.027	0.08%
KAMCO Investment	0.077	0.002	2.39%	0.47	8.69	0.0%	26	7%	-14%	0.06	0.78	5.4%	2.3%	0.111	0.060	0.08%
First Investment	0.036	0.000	0.00%	0.56	(0.49)	0.0%	23	13%	3%	0.22	6.27	-113.6%	-62.0%	0.045	0.022	0.07%
Inovest BSC Public	0.074	0.001	1.93%	0.51	9.94	8.0%	22	-1%	16%	0.00	0.03	5.2%	2.9%	0.080	0.044	0.07%
Coast Investment and Development	0.038	0.002	4.64%	0.41	38.17	0.0%	22	7%	-4%	0.11	2.81	1.1%	1.0%	0.045	0.026	0.07%
Al Madar Finance and Investment	0.084	0.000	0.36%	0.76	12.54	0.0%	17	2%	-9%	0.01	0.15	6.1%	5.0%	0.143	0.062	0.05%
Bayan Investment	0.045	0.000	0.22%	0.45	(23.20)	0.0%	16	-4%	18%	0.00	0.00	-1.9%	-0.8%	0.053	0.031	0.05%
Al Manar Financing and Leasing	0.049	0.000	-0.41%	0.44	12.58	1.0%	15	10%	-6%	0.00	0.05	3.5%	2.7%	0.060	0.037	0.05%
Manazel Holding	0.034	0.000	-0.88%	0.74	21.60	0.0%	14	6%	-14%	0.04	1.29	3.4%	0.8%	0.048	0.021	0.04%
Kuwait Finance and Investment	0.045	0.000	0.00%	0.36	20.21	0.0%	14	3%	-9%	0.00	0.04	1.8%	1.2%	0.058	0.038	0.04%
National International Holding	0.063	0.002	3.28%	0.33	7.58	4.7%	13	5%	-14%	0.00	0.06	4.4%	3.3%	0.081	0.051	0.04%
Osoul Investment	0.080	-0.002	-2.08%	0.60	6.72	0.0%	12	0%	7%	0.00	0.06	9.0%	8.2%	0.121	0.070	0.04%
UniCap Investment and Finance	0.045	0.000	0.00%	0.46	(22.53)	0.0%	11	6%	-18%	0.01	0.13	-2.0%	-1.0%	0.057	0.035	0.03%
Amar Finance and Leasing	0.053	0.000	0.00%	0.60	44.54	0.0%	10	-5%	40%	0.00	0.00	1.3%	1.2%	0.064	0.037	0.03%
Gulf North Africa Holding	0.059	-0.001	-1.68%	0.78	75.37	0.0%	9	1%	-6%	0.00	0.06	1.0%	0.6%	0.062	0.052	0.03%
Al Salam Group Holding	0.029	0.000	0.70%	0.25	217.42	0.0%	8	13%	-1%	0.20	6.91	0.1%	0.1%	0.033	0.018	0.02%
International Financial Advisors	0.031	0.000	0.00%	0.93	(0.42)	2.1%	8	0%	-42%	0.00	0.00	-222.8%	-19.3%	0.060	0.027	0.02%
Amwal International Investment	0.036	0.000	0.00%	0.66	13.12	0.0%	6	0%	18%	0.00	0.00	5.0%	2.6%	0.044	0.030	0.02%
Al Madina for Finance and Investment	0.014	0.000	2.96%	0.47	(2.61)	0.0%	6	14%	-7%	0.13	9.09	-17.9%	-7.7%	0.019	0.009	0.02%
Credit Rating and Collection	0.032	0.000	0.00%	0.97	(21.20)	0.0%	5	0%	58%	0.00	0.00	-4.6%	-4.3%	0.035	0.019	0.02%
Ektitab Holding	0.015	0.000	0.66%	0.37	(10.77)	0.0%	5	-1%	1%	0.01	0.86	-3.4%	-3.0%	0.017	0.010	0.01%
Kuwait Syrian Holding Co	0.028	0.000	0.00%	0.24	(14.05)	0.0%	5	2%	-13%	0.00	0.00	-1.7%	-1.1%	0.043	0.022	0.01%
Warba Capital Holding	0.046	-0.002	-4.17%	0.51	(7.31)	0.0%	5	-1%	-29%	0.06	1.36	-7.0%	-6.2%	0.071	0.042	0.01%
National Consumer Holding	0.048	0.000	0.00%	0.53	235.16	0.0%	4	0%	-13%	0.00	0.00	0.2%	0.2%	0.100	0.010	0.01%
Al Deera Holding	0.016	0.000	0.00%	0.70	(9.02)	0.0%	3	0%	-20%	0.00	0.00	-7.7%	-1.7%	0.022	0.011	0.01%
Al Mal Investment Company	0.009	0.000	-2.15%	0.40	(0.85)	0.0%	3	2%	-8%	0.04	3.98	-47.6%	-23.3%	0.016	0.008	0.01%
Gulf Franchising Holding	0.045	0.000	0.00%	0.71	(1.97)	0.0%	2	-5%	-40%	0.00	0.00	-36.2%	-10.8%	0.160	0.001	0.01%
Tamkeen Holding	0.005	0.000	0.00%	0.05	(7.18)	0.0%	0	0%	0%	0.00	0.00	-0.7%	-0.7%	0.005	0.005	0.00%
Total Financial services - 49 Companies				0.73	16.54	4.1%	2,554			9.03	113.36	4.42%	4.14%			7.75%

DAILY MARKET COVERAGE REPORT

NIC MENA SECURITIES - RESEARCH AND STUDIES DEP



Health care	Price			Valuation Multiples			MKT Cap	Price Performance		Trading Indicators		ROE	ROA	52 Week (KD)		MKT Cap
Company	Close (KD)	Day Δ	Day % Δ	PBV(X)	PE(X)	DY%	Mn KD	MTD(%)	YTD (%)	Value (Mn KD)	(Mn Shrs)	(%)	(%)	High	Low	%
Al-Maidan Clinic for Oral Health Services	1.220	0.000	0.00%	7.90	47.78	0.6%	305	0%	0%	0.00	0.00	16.5%	10.9%	1.240	1.220	0.92%
Advanced Technology	0.597	0.000	0.00%	1.55	48.60	2.5%	90	0%	-26%	0.00	0.00	3.2%	0.7%	0.900	0.580	0.27%
Yiaco Medical	0.707	0.000	0.00%	6.06	52.72	0.0%	12	0%	0%	0.00	0.00	11.5%	0.6%	0.707	0.707	0.04%
Total Health care - 3 Companies				4.14	48.09	1.0%	407			0.00	0.00	8.61%	4.68%			1.23%

Industrials	Price			Valuation Multiples			MKT Cap	Price Performance		Trading Indicators		ROE	ROA	52 Week (KD)		MKT Cap
Company	Close (KD)	Day Δ	Day % Δ	PBV(X)	PE(X)	DY%	Mn KD	MTD(%)	YTD (%)	Value (Mn KD)	(Mn Shrs)	(%)	(%)	High	Low	%
Agility Public Warehousing	0.700	0.013	1.89%	1.22	15.44	2.6%	1,339	7%	-2%	4.99	7.17	7.9%	4.2%	0.748	0.357	4.06%
Human Soft Holding	2.718	-0.012	-0.44%	4.11	9.22	6.8%	331	5%	-10%	1.70	0.63	44.6%	30.3%	3.470	1.944	1.00%
ALAFCO Aviation Lease and Finance	0.167	0.002	1.21%	0.50	8.98	6.0%	159	6%	-39%	0.49	2.92	5.5%	1.4%	0.278	0.138	0.48%
Kuwait Cement	0.225	0.006	2.74%	0.77	39.93	6.6%	160	17%	-9%	0.41	1.83	1.9%	1.3%	0.270	0.144	0.49%
Gulf Cable and Electrical Industries	0.715	-0.002	-0.28%	0.86	35.46	3.8%	150	4%	46%	0.36	0.50	2.4%	2.2%	0.742	0.390	0.46%
Integrated Holding	0.370	0.008	2.21%	1.19	10.31	10.8%	81	3%	-33%	0.99	2.69	11.5%	8.5%	0.600	0.342	0.25%
Kuwait Portland Cement	0.788	0.012	1.55%	1.06	10.41	12.5%	79	5%	-20%	0.06	0.07	10.2%	8.2%	1.140	0.683	0.24%
Educational Holding Group	0.300	-0.005	-1.64%	1.74	9.50	5.0%	74	-3%	-32%	0.00	0.01	18.3%	16.7%	0.475	0.228	0.22%
United Projects for Aviation Services	0.465	0.000	0.00%	0.98	7.96	4.5%	74	0%	-9%	0.00	0.00	12.3%	7.8%	0.512	0.367	0.23%
Heavy Engineering Industries and Shipbuilding	0.374	-0.002	-0.53%	1.08	6.01	7.8%	67	3%	-8%	0.07	0.18	18.0%	5.9%	0.419	0.298	0.20%
National Industries	0.155	0.000	0.00%	0.64	12.63	6.4%	54	1%	-5%	0.01	0.05	5.1%	3.8%	0.173	0.143	0.16%
ACICO Industries	0.105	0.003	2.94%	0.34	13.67	4.7%	35	3%	-22%	0.01	0.09	2.5%	0.6%	0.137	0.081	0.10%
Kuwait Company for Process Plant Constructi	0.310	0.000	0.00%	1.23	6.64	5.8%	33	2%	29%	0.01	0.04	18.5%	7.7%	0.337	0.175	0.10%
Ras Al Khaimah for White Cement and Constr	0.065	0.000	0.00%	0.51	19.94	8.4%	33	0%	0%	0.00	0.00	2.6%	2.0%	0.080	0.055	0.10%
Combined Group Contracting	0.190	0.003	1.60%	0.66	8.56	10.8%	31	10%	-24%	0.76	4.01	7.7%	1.2%	0.251	0.138	0.09%
Gulf Cement	0.034	0.002	5.94%	0.34	(12.36)	12.2%	28	3%	-38%	0.00	0.05	-2.7%	-2.2%	0.060	0.029	0.08%
Sharjah Cement and Industrial Development	0.042	0.000	0.00%	0.21	25.32	12.4%	26	0%	0%	0.00	0.00	0.8%	0.6%	0.061	0.042	0.08%
KGL Logistics	0.030	0.001	1.68%	0.23	4.93	0.1%	23	12%	-20%	0.12	3.88	4.6%	2.9%	0.043	0.023	0.07%
Kuwait and Gulf Link Transport	0.055	-0.001	-0.91%	0.23	16.51	0.0%	15	15%	-19%	0.05	0.85	1.4%	0.4%	0.077	0.042	0.05%
Shuaiba Industrial	0.140	0.000	0.00%	0.78	43.23	7.1%	14	8%	-10%	0.00	0.00	1.8%	1.4%	0.180	0.122	0.04%
National Cleaning	0.058	0.000	0.69%	0.34	7.76	8.7%	12	2%	-16%	0.01	0.13	4.4%	1.5%	0.088	0.047	0.04%
Fujairah Cement Industries	0.034	0.000	0.00%	0.14	16.54	12.3%	12	0%	-24%	0.00	0.00	0.8%	0.4%	0.052	0.029	0.04%
Hilal Cement	0.114	0.000	0.00%	0.99	(9.37)	13.2%	12	0%	14%	0.00	0.00	-10.6%	-6.2%	0.126	0.063	0.04%
Mubarrad Holding	0.063	0.000	-0.32%	0.50	10.16	7.4%	10	3%	-29%	0.04	0.59	4.9%	4.1%	0.089	0.049	0.03%
Specialities Group Holding	0.065	0.001	1.57%	0.35	7.69	0.0%	10	4%	-15%	0.06	0.91	4.5%	3.5%	0.078	0.050	0.03%
National Ranges	0.015	0.000	-0.66%	0.27	(1.10)	0.0%	4	7%	50%	0.03	1.81	-24.9%	-5.3%	0.018	0.007	0.01%
Salbookh Trading	0.035	0.000	-0.85%	0.48	(2.05)	0.0%	4	-3%	-30%	0.01	0.19	-23.2%	-15.9%	0.051	0.026	0.01%
Metal and Recycling	0.039	-0.002	-4.16%	0.33	(1.66)	0.0%	4	0%	-22%	0.00	0.04	-19.7%	-10.1%	0.070	0.020	0.01%
Equipment Holding	0.016	0.000	-2.47%	0.32	(182.45)	0.0%	2	-1%	-28%	0.00	0.17	-0.2%	-0.1%	0.024	0.013	0.01%
Total Industrials - 29 Companies				0.91	13.71	4.8%	2,876			10.17	28.83	6.67%	5.05%			8.72%

DAILY MARKET COVERAGE REPORT

NIC MENA SECURITIES - RESEARCH AND STUDIES DEP



Insurance	Price			Valuation Multiples			MKT Cap	Price Performance		Trading Indicators		ROE	ROA	52 Week (KD)		MKT Cap
	Company	Close (KD)	Day Δ	Day % Δ	PBV(X)	PE(X)	DY%	Mn KD	MTD(%)	YTD (%)	Value (Mn KD)	(Mn Shrs)	(%)	(%)	High	Low
Gulf Insurance Group	0.609	-0.026	-4.09%	1.04	8.50	6.1%	113	-15%	-8%	0.11	0.19	12.3%	1.7%	0.720	0.550	0.34%
Al Ahleia Insurance	0.413	0.007	1.72%	0.78	8.32	8.1%	85	3%	1%	0.03	0.08	9.4%	3.3%	0.445	0.367	0.26%
Kuwait Insurance	0.360	0.000	0.00%	0.59	6.97	6.6%	67	0%	9%	0.00	0.00	8.5%	4.6%	0.387	0.300	0.20%
Kuwait Reinsurance	0.222	0.001	0.45%	0.84	9.50	2.0%	45	0%	61%	0.00	0.00	8.9%	3.2%	0.221	0.126	0.14%
Bahrain Kuwait Insurance	0.200	0.000	0.00%	0.93	12.87	6.1%	28	0%	0%	0.00	0.00	7.2%	1.1%	0.200	0.200	0.09%
Warba Insurance	0.078	0.000	-0.13%	0.34	11.04	0.0%	13	7%	29%	0.00	0.00	3.1%	1.0%	0.094	0.051	0.04%
First Takaful Insurance	0.039	-0.001	-1.76%	0.47	4.94	0.0%	4	2%	0%	0.00	0.02	9.6%	5.9%	0.056	0.031	0.01%
Wethaq Takaful Insurance	0.024	0.001	2.17%	0.21	(29.74)	0.0%	3	0%	-6%	0.00	0.03	-0.7%	-0.7%	0.035	0.018	0.01%
Total Insurance - 8 Companies				0.76	8.53	5.8%	358			0.15	0.32	8.86%	3.00%			1.09%

Oil and Gas	Price			Valuation Multipels			MKT Cap	Price Performance		Trading Indicators		ROE	ROA	52 Week (KD)		MKT Cap
	Company	Close (KD)	Day Δ	Day % Δ	PBV(X)	PE(X)	DY%	Mn KD	MTD(%)	YTD (%)	Value (Mn KD)	(Mn Shrs)	(%)	(%)	High	Low
National Petroleum Services	1.100	0.000	0.00%	2.62	9.38	6.4%	107	0%	-6%	0.00	0.00	27.9%	23.6%	1.389	0.903	0.32%
Independent Petroleum Group	0.430	0.000	0.00%	0.79	11.72	7.0%	78	0%	-11%	0.00	0.00	6.8%	2.2%	0.497	0.375	0.24%
Burgan for Well Drilling Trading and Maintenanc	0.075	0.000	0.00%	0.27	7.62	0.0%	17	-3%	-6%	0.00	0.05	3.6%	1.1%	0.098	0.060	0.05%
Energy House Holding	0.024	-0.003	-9.33%	0.75	(3.33)	0.0%	18	24%	7%	0.14	5.69	-22.5%	-17.0%	0.036	0.014	0.06%
Gulf Petroleum Investment	0.021	0.001	3.40%	0.24	(6.86)	0.0%	10	15%	5%	0.45	21.58	-3.4%	-2.3%	0.023	0.012	0.03%
Senegy Holding	0.019	0.000	-1.06%	0.38	(0.78)	0.0%	4	-2%	-15%	0.01	0.48	-47.9%	-30.4%	0.027	0.014	0.01%
Total Oil and Gas - 6 Companies				0.84	27.09	5.2%	233			0.61	27.79	3.10%	2.18%			0.71%

Real estate	Price			Valuation Multiples			MKT Cap	Price Performance		Trading Indicators		ROE	ROA	52 Week (KD)		MKT Cap
	Company	Close (KD)	Day Δ	Day % Δ	PBV(X)	PE(X)	DY%	Mn KD	MTD(%)	YTD (%)	Value (Mn KD)	(Mn Shrs)	(%)	(%)	High	Low
Mabane Co.	0.757	-0.001	-0.13%	1.77	14.83	1.4%	837	4%	-11%	0.69	0.91	11.9%	5.8%	0.877	0.434	2.54%
Salhia Real Estate	0.409	0.007	1.74%	1.24	9.40	4.9%	202	2%	-2%	0.21	0.53	13.2%	5.8%	0.460	0.330	0.61%
Commercial Real Estate	0.104	-0.001	-0.95%	0.64	12.88	5.5%	188	3%	13%	0.16	1.51	5.0%	2.7%	0.111	0.083	0.57%
National Real Estate	0.077	0.001	0.78%	0.43	10.19	0.0%	116	4%	-11%	0.26	3.44	4.2%	2.4%	0.090	0.058	0.35%
Tamdeen Real Estate	0.261	0.001	0.38%	0.38	12.73	3.9%	105	0%	-19%	0.00	0.00	3.0%	2.2%	0.343	0.241	0.32%
Kuwait Real Estate	0.098	0.000	0.00%	0.69	12.45	0.4%	88	4%	-7%	0.02	0.20	5.5%	2.2%	0.115	0.070	0.27%
United Real Estate	0.051	0.001	2.00%	0.29	(7.59)	0.0%	55	5%	-17%	0.00	0.06	-3.9%	-1.2%	0.063	0.045	0.17%
First Dubai for Real Estate Development	0.043	0.000	0.95%	0.57	46.61	0.9%	42	10%	19%	0.11	2.60	1.2%	1.0%	0.055	0.027	0.13%
Al Mazaya Holding	0.055	0.000	0.00%	0.43	(3.91)	0.1%	34	4%	-8%	0.07	1.24	-11.0%	-3.8%	0.067	0.047	0.10%
Ajial Real Estate Entertainment	0.155	0.006	4.03%	0.24	14.98	0.0%	30	1%	-15%	0.00	0.02	1.6%	1.4%	0.213	0.115	0.09%
Injazzat Real Estate Development	0.079	0.000	0.00%	0.51	(3.79)	8.7%	26	0%	-1%	0.00	0.00	-13.4%	-7.0%	0.091	0.061	0.08%

DAILY MARKET COVERAGE REPORT

NIC MENA SECURITIES - RESEARCH AND STUDIES DEP



Real estate Company	Price			Valuation Multiples			MKT Cap	Price Performance		Trading Indicators		ROE	ROA	52 Week (KD)		MKT Cap
	Close (KD)	Day Δ	Day % Δ	PBV(X)	PE(X)	DY%	Mn KD	MTD(%)	YTD (%)	Value (Mn KD)	(Mn Shrs)	(%)	(%)	High	Low	%
Munshaat Real Estate Projects	0.078	-0.004	-4.76%	0.53	28.75	2.7%	25	10%	5%	0.05	0.57	1.8%	0.7%	0.090	0.045	0.08%
Aayan Real Estate	0.060	0.000	-0.17%	0.35	11.70	8.0%	25	2%	-18%	0.00	0.01	3.0%	1.9%	0.080	0.048	0.08%
Al Argan International Real Estate	0.093	0.000	0.00%	0.27	30.14	5.3%	24	0%	-11%	0.00	0.00	0.9%	0.3%	0.135	0.060	0.07%
Al-Enmaa Real Estate	0.053	0.001	1.55%	0.53	13.88	0.0%	24	13%	-15%	0.34	6.34	3.8%	2.4%	0.079	0.037	0.07%
Ream Real Estate	0.204	0.000	0.00%	1.56	(8.21)	1.1%	22	0%	132%	0.00	0.00	-19.0%	-10.1%	0.204	0.060	0.07%
Arkan Al Kuwait Real Estate	0.085	-0.004	-4.92%	0.61	9.22	9.2%	21	5%	-4%	0.00	0.01	6.6%	3.5%	0.100	0.076	0.06%
Kuwait Business Town Real Estate	0.032	0.000	0.32%	0.29	8.07	0.2%	20	9%	-27%	0.04	1.39	3.6%	2.7%	0.046	0.022	0.06%
Dalqan Real Estate	0.318	0.000	0.00%	2.91	58.98	0.0%	19	0%	0%	0.00	0.00	4.9%	4.9%	0.318	0.318	0.06%
Sokouk Holding	0.029	0.000	0.00%	0.35	(4.79)	0.0%	16	5%	-18%	0.03	0.92	-7.4%	-4.7%	0.040	0.022	0.05%
Tijara and Realestate Investment	0.048	0.000	-0.21%	0.45	12.73	4.1%	18	20%	-3%	0.10	2.06	3.6%	1.9%	0.055	0.034	0.05%
Al-Arabiya Real Estate	0.029	0.000	-1.02%	0.25	8.79	2.1%	15	10%	-1%	0.09	3.25	2.9%	1.1%	0.033	0.020	0.04%
Aqar Real Estate Investments	0.060	0.000	0.00%	0.43	5.01	8.3%	13	1%	-25%	0.00	0.08	8.7%	7.3%	0.089	0.058	0.04%
Mashaer Holding	0.061	0.002	2.89%	0.46	6.51	0.0%	11	5%	-22%	0.01	0.20	7.1%	5.0%	0.086	0.048	0.03%
Investors Holding Group	0.018	0.000	2.31%	0.89	(0.84)	0.0%	11	13%	123%	0.60	33.72	-106.5%	-57.2%	0.032	0.007	0.03%
Dar Al Thuraya Real Estate	0.069	-0.003	-4.03%	0.66	18.19	0.0%	10	-11%	-8%	0.00	0.01	3.6%	3.6%	0.190	0.040	0.03%
Osos Holding Group	0.090	0.004	4.29%	0.72	6.79	10.5%	9	3%	-10%	0.01	0.10	10.5%	7.0%	0.118	0.081	0.03%
Al Massaleh Real Estate	0.035	-0.002	-4.86%	0.40	(4.91)	0.0%	8	2%	-5%	0.00	0.01	-8.1%	-1.9%	0.040	0.026	0.03%
Abyaar Real Estate Development	0.007	0.000	0.00%	0.21	(0.51)	0.0%	8	0%	-6%	0.00	0.00	-40.9%	-12.4%	0.013	0.005	0.02%
Kuwait Remal Real Estate	0.023	0.000	0.87%	0.35	(3.20)	0.0%	7	14%	-6%	0.01	0.44	-11.0%	-3.9%	0.027	0.013	0.02%
Kuwait Real Estate Holding	0.026	0.000	0.00%	0.04	0.70	6.8%	5	1%	-8%	0.00	0.00	5.5%	2.2%	0.034	0.022	0.02%
Taameer Real Estate Investment	0.020	0.001	4.17%	0.30	(4.23)	0.0%	5	7%	-25%	0.07	3.39	-7.0%	-4.5%	0.034	0.013	0.01%
Sanam Real Estate	0.033	0.000	0.00%	0.42	44.69	0.0%	4	-6%	-17%	0.00	0.00	0.9%	0.9%	0.043	0.027	0.01%
Mena Real Estate	0.030	0.001	1.72%	0.20	(65.75)	0.0%	4	5%	-29%	0.05	1.71	-0.3%	-0.2%	0.043	0.021	0.01%
Al Masaken International Real Estate Developr	0.036	0.000	0.00%	0.40	43.60	0.5%	4	0%	-18%	0.00	0.00	0.9%	0.4%	0.074	0.026	0.01%
Real Estate Trade Centers	0.029	0.000	0.00%	0.16	166.84	0.0%	4	8%	26%	0.00	0.00	0.1%	0.1%	0.050	0.018	0.01%
Ajwan Gulf Real Estate	0.011	0.000	0.00%	0.19	(7.68)	0.0%	2	0%	-29%	0.00	0.00	-2.5%	-2.2%	0.016	0.009	0.01%
Effect Real Estate	0.021	0.000	0.00%	0.29	(8.85)	4.9%	2	0%	0%	0.00	0.00	-3.3%	-3.2%	0.021	0.021	0.01%
Al Mudon International Real Estate	0.016	0.000	0.00%	0.12	(8.22)	0.0%	2	0%	-35%	0.00	0.00	-1.5%	-1.4%	0.029	0.015	0.00%
Total Real estate - 39 Companies				0.67	24.12	2.4%	2,061			2.93	64.71	2.79%	2.96%			6.25%

DAILY MARKET COVERAGE REPORT

NIC MENA SECURITIES - RESEARCH AND STUDIES DEP



Technology	Price			Valuation Multiples			MKT Cap	Price Performance		Trading Indicators		ROE	ROA	52 Week (KD)		MKT Cap
	Company	Close (KD)	Day Δ	Day % Δ	PBV(X)	PE(X)		DY%	Mn KD	MTD(%)	YTD (%)			Value (Mn KD)	(Mn Shrs)	
Automated Systems	0.070	-0.003	-3.45%	0.55	(67.90)	5.7%	7	-1%	-1%	0.02	0.26	-0.8%	-0.7%	0.087	0.051	0.02%
Total Technology - 1 Companies				0.55	(67.90)	5.7%	7			0.02	0.26	-0.81%	-0.73%			0.02%

Telecom	Price			Valuation Multiples			MKT Cap	Price Performance		Trading Indicators		ROE	ROA	52 Week (KD)		MKT Cap
	Company	Close (KD)	Day Δ	Day % Δ	PBV(X)	PE(X)		DY%	Mn KD	MTD(%)	YTD (%)			Value (Mn KD)	(Mn Shrs)	
Mobile Telecommunications	0.608	0.011	1.84%	2.03	12.13	5.1%	2,631	6%	2%	5.96	9.82	16.7%	4.6%	0.604	0.407	7.98%
Kuwait Telecommunications	0.841	0.001	0.12%	1.95	9.63	4.2%	420	0%	7%	0.02	0.02	20.2%	11.1%	0.870	0.680	1.27%
National Mobile Telecommunications	0.624	0.009	1.46%	0.55	10.38	10.4%	313	4%	-25%	0.08	0.14	5.3%	2.4%	0.835	0.550	0.95%
AAN Digital Services	0.013	0.000	1.52%	0.40	43.71	0.0%	12	4%	-1%	0.10	7.68	0.9%	0.7%	0.021	0.009	0.04%
Hayat Communications	0.059	0.000	0.00%	0.50	24.83	0.0%	5	0%	-22%	0.00	0.00	2.0%	0.8%	0.098	0.033	0.02%
Telecom - 5 Companies				1.59	11.61	5.5%	3,380			6.16	17.66	13.70%	7.86%			10.25%

Utilities	Price			Valuation Multiples			MKT Cap	Price Performance		Trading Indicators		ROE	ROA	52 Week (KD)		MKT Cap
	Company	Close (KD)	Day Δ	Day % Δ	PBV(X)	PE(X)		DY%	Mn KD	MTD(%)	YTD (%)			Value (Mn KD)	(Mn Shrs)	
Shamal Az-Zour Al-Oula Power & Water	0.329	0.001	0.30%	4.72	29.42	0.0%	362	3%	0%	0.81	2.45	16.1%	2.3%	0.500	0.297	1.10%
Total Utilities - 1 Companies				4.72	29.42	0.0%	362			0.81	2.45	16.06%	2.26%			1.10%

Total Market 173 Companies				1.32	15.92	3.69%	32,973			71.26	374.10	8.26%	2.76%			100%
-----------------------------------	--	--	--	-------------	--------------	--------------	---------------	--	--	--------------	---------------	--------------	--------------	--	--	-------------

End of Report

The information contained in this document is proprietary to NIC and is for use only by the persons to whom it is issued. This document is confidential and may not be distributed either in part or in whole without the express agreement of NIC. It is intended solely for the use of the individual or entity to whom it is addressed and others authorized to receive it.

Note : ROE and ROA is calculated based on LTM net profit & shareholders' equity and LTM Operating Profits & Total Assets

Sources : National Investments Company Research and Studies Departments



شركة الاستثمار الوطنية
NATIONAL INVESTMENTS COMPANY

Sharq, Al Mutanabi Street, Khaleejia Tower | P.O. Box 25667, Safat 13117, Kuwait

T.: +965 2226 6666 | Fax: +965 2226 6793 | www.nic.com.kw