

شركة الاستثمارات الوطنية
NATIONAL INVESTMENTS COMPANY

Boursa Kuwait – Daily Market Report
MENA Securities – Research & Studies Dep.

Wednesday, September 9, 2020

DAILY MARKET COVERAGE REPORT

NIC MENA SECURITIES - RESEARCH AND STUDIES DEP



Index	Close	DTD Chg Net	DTD (%)	YTD (%)	52W High	52W Low	MKT CAP Bn (KD)	PBV (X)	PE (X)	DY (%)
All Share Index	5,295.75	-1.74	-0.03%	-15.6%	6,416.43	4,339.58	30.54	1.18	14.82	3.99%
Premier Index	5,812.94	-2.80	-0.05%	-16.6%	7,172.32	4,498.65	22.49	1.63	13.60	3.72%
Main Index	4,274.80	0.44	0.01%	-13.0%	4,932.47	3,965.63	8.04	0.67	19.77	4.75%

Index	Value Mn(KD)	Volume (Mn share)
All Share Index	33.37	290.85
Premier Index	23.51	75.33
Main Index	9.86	215.52

Market Breadth	UP	Down	No Chg
All Share Index	46	64	62
Premier Index	6	9	3
Main Index	40	55	59

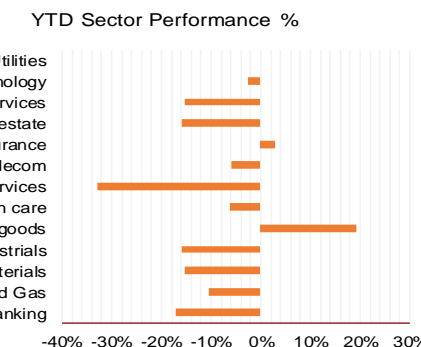
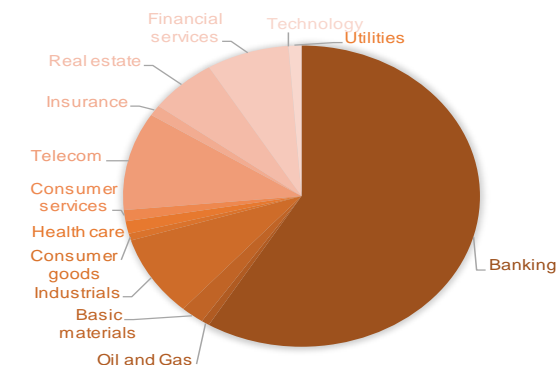
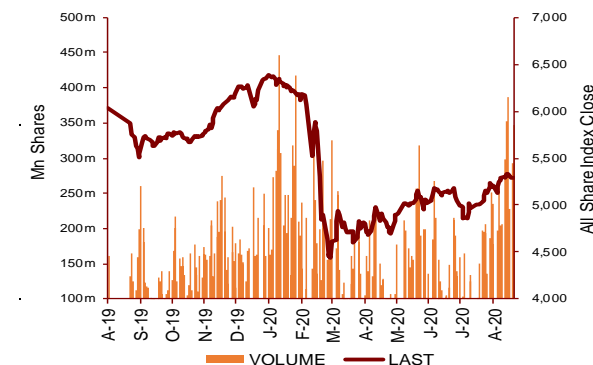
Today's Top 5 Gainer %	Close KD	Value KD	DTD (%)
Investors Holding Group	0.023	352,920	36.36%
Ajial Real Estate Entertainment	0.142	7	5.19%
Burgan for Well Drilling Tradi	0.087	26	4.82%
National Industries Group Hold	0.169	2,323,088	4.32%
Specialities Group Holding	0.061	3,355	4.29%

Today's Top 5 Loser %	Close KD	Value KD	DTD (%)
Arzan Financial Group for f	0.053	1,789,067	-9.86%
Credit Rating and Collectio	0.032	49	-9.09%
Kuwait Real Estate Holding	0.023	4,549	-6.48%
Umm Al Qaiwain General I	0.087	9	-4.93%
Metal and Recycling	0.043	43	-4.88%

Today's Top 5 by Value	Close KD	DTD Chg	Trade Val Mn(KD)
National Bank of Kuwait	0.857	0.71%	4.34
Ahli United Bank BSC	0.219	-2.23%	4.30
Kuwait Finance House	0.624	0.00%	3.62
National Industries Group Hold	0.169	4.32%	2.32
Aayan Leasing and Investment	0.080	1.91%	1.84

Top 5 by Volume	Close KD	DTD Chg	Trade Vol Mn(Shrs)
Arzan Financial Group for f	0.053	-9.86%	32.78
Aayan Leasing and Investrn	0.080	1.91%	22.73
Ahli United Bank BSC	0.219	-2.23%	19.48
Gulf Petroleum Investment	0.021	-2.78%	18.30
Investors Holding Group	0.023	36.36%	18.07

Sector	Close	DTD Chg Net	DTD (%)	YTD (%)	52W High	52W Low	MKT CAP Bn (KD)	PBV (X)	PE (X)	DY (%)
Banking	1,225.62	-0.350	-0.03%	-17.2%	1,536.8	986.4	17.92	1.51	14.94	3.5%
Oil and Gas	1,109.99	1.890	0.17%	-10.3%	1,372.2	985.7	0.22	0.81	25.98	5.5%
Basic materials	768.26	-2.240	-0.29%	-15.4%	1,015.7	561.7	0.65	0.93	14.13	7.8%
Industrials	779.27	-0.880	-0.11%	-16.0%	937.5	602.9	2.66	0.85	12.67	5.2%
Consumer goods	757.04	-21.440	-2.75%	19.1%	810.7	548.6	0.23	1.50	91.75	2.3%
Health care	829.21	0.000	0.00%	-6.3%	921.9	815.0	0.41	4.19	48.62	1.0%
Consumer services	719.42	-2.160	-0.30%	-32.9%	1,083.1	674.8	0.36	0.82	34.55	4.9%
Telecom	1,050.06	-0.170	-0.02%	-5.8%	1,116.7	802.2	3.22	1.51	11.05	5.7%
Insurance	988.60	8.220	0.84%	3.0%	988.8	901.0	0.35	0.74	8.39	5.9%
Real estate	889.97	2.520	0.28%	-15.9%	1,083.4	763.2	1.87	0.61	21.86	2.6%
Financial services	915.26	0.690	0.08%	-15.4%	1,097.0	801.4	2.29	0.66	15.78	4.6%
Technology	501.25	-6.540	-1.29%	-2.7%	625.7	371.0	0.01	0.54	-66.83	5.8%
Utilities	850.00	-5.260	-0.62%	0.0%	1,042.1	781.6	0.36	4.64	28.88	0.0%
	5,295.75	-1.74	-0.03%	-15.6%	6,416.4	4,339.6	30.54	1.18	14.82	3.99%



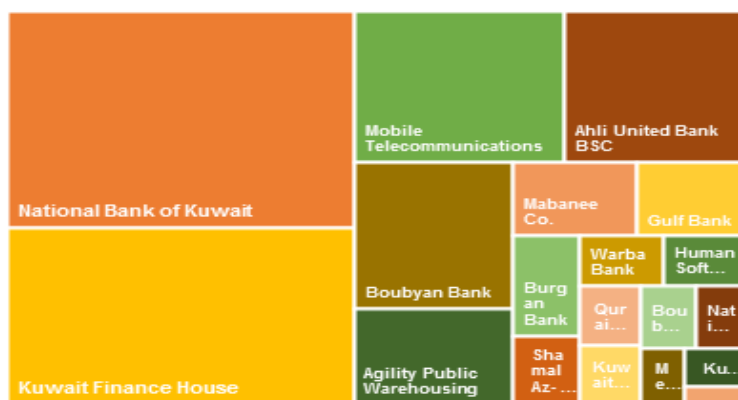
DAILY MARKET COVERAGE REPORT

NIC MENA SECURITIES - RESEARCH AND STUDIES DEP

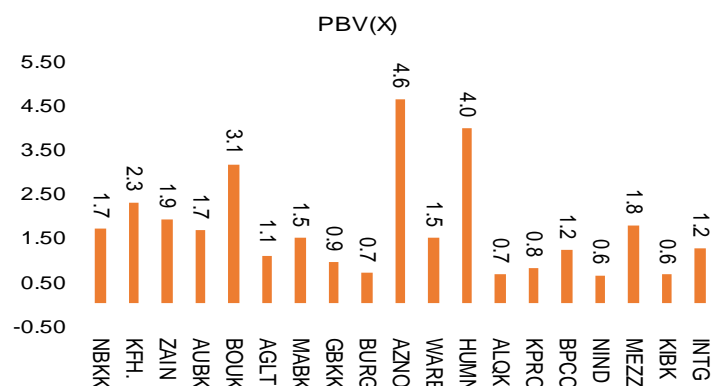


Premier Market	Price			Valuation Multiples			MKT Cap	Price Performance		Trading Indicators		ROE	ROA	52 Week (KD)	
	Close (KD)	Day Δ	Day % Δ	PBV(X)	PE(X)	DY%	Mn KD	MTD(%)	YTD (%)	Value (Mn KD)	(Mn Shrs)	(%)	(%)	High	Low
National Bank of Kuwait	0.857	0.006	0.71%	1.69	14.50	3.7%	5,820	0%	-15%	4.34	5.05	11.7%	1.4%	1.062	0.654
Kuwait Finance House	0.624	0.000	0.00%	2.30	18.86	2.6%	4,735	0%	-15%	3.62	5.80	12.2%	1.3%	0.761	0.473
Mobile Telecommunications	0.572	-0.001	-0.17%	1.91	11.41	5.4%	2,475	-3%	-4%	1.60	2.79	16.7%	4.6%	0.604	0.407
Ahli United Bank BSC	0.219	-0.005	-2.23%	1.65	9.65	5.5%	2,114	-6%	-25%	4.30	19.48	17.1%	1.8%	0.311	0.160
Boubyan Bank	0.596	0.002	0.34%	3.14	28.81	1.1%	1,805	2%	-3%	0.89	1.49	10.9%	1.2%	0.638	0.380
Agility Public Warehousing	0.623	0.002	0.32%	1.08	13.74	2.9%	1,192	0%	-13%	0.44	0.72	7.9%	4.2%	0.748	0.357
Mabane Co.	0.635	0.000	0.00%	1.48	12.44	1.6%	702	0%	-26%	0.26	0.42	11.9%	5.8%	0.877	0.434
Gulf Bank	0.212	0.001	0.47%	0.93	9.67	4.7%	616	0%	-30%	0.67	3.15	9.6%	1.0%	0.317	0.180
Burgan Bank	0.198	0.000	0.00%	0.69	6.13	5.8%	519	0%	-35%	0.09	0.48	11.3%	1.2%	0.337	0.175
Shamal Az-Zour Al-Oula Power & Water	0.323	-0.002	-0.62%	4.64	28.88	0.0%	355	1%	0%	0.74	2.29	16.1%	2.3%	0.500	0.297
Warba Bank	0.206	-0.005	-2.37%	1.49	19.62	0.0%	324	4%	-21%	1.54	7.41	7.6%	0.5%	0.279	0.164
Human Soft Holding	2.623	-0.011	-0.42%	3.97	8.90	7.0%	319	4%	-13%	0.08	0.03	44.6%	30.3%	3.470	1.944
Qurain Petrochemical Industries	0.274	-0.001	-0.36%	0.67	9.91	5.6%	280	-4%	-12%	0.16	0.58	6.7%	3.6%	0.341	0.163
Kuwait Projects Company Holding	0.151	-0.001	-0.66%	0.81	9.12	6.1%	274	1%	-30%	0.20	1.32	8.9%	0.3%	0.231	0.147
Boubyan Petrochemical	0.537	-0.002	-0.37%	1.21	22.92	9.6%	271	0%	-20%	0.05	0.10	5.3%	2.1%	0.800	0.395
National Industries Group Holding	0.169	0.007	4.32%	0.64	5.21	6.4%	241	8%	-30%	2.32	14.01	12.3%	3.7%	0.247	0.121
Mezzan Holding	0.613	-0.019	-3.01%	1.77	33.13	2.7%	187	-5%	23%	0.26	0.42	5.3%	2.2%	0.665	0.428
Kuwait International Bank	0.177	-0.001	-0.56%	0.64	10.53	5.7%	180	3%	-32%	1.55	8.75	6.1%	0.6%	0.270	0.162
Integrated Holding	0.388	0.002	0.52%	1.24	10.81	10.3%	85	11%	-30%	0.40	1.03	11.5%	8.5%	0.600	0.342
Total		-2.80	-0.05%	1.63	13.60	3.72%	22,495	-0.6%	-16.6%	23.51	75.33	11.96%	1.55%		

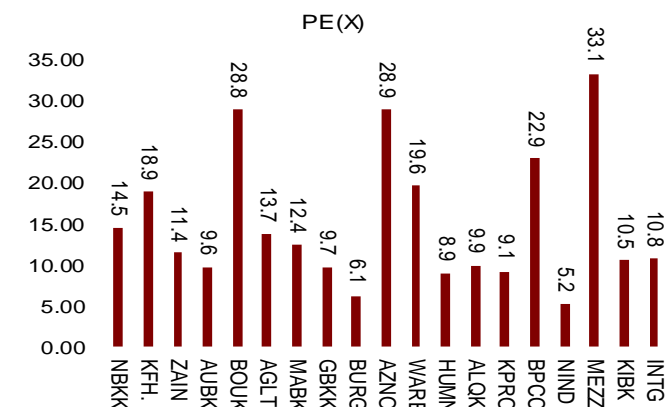
Market Capitalization



Price to Book Value



Price to Earning Value

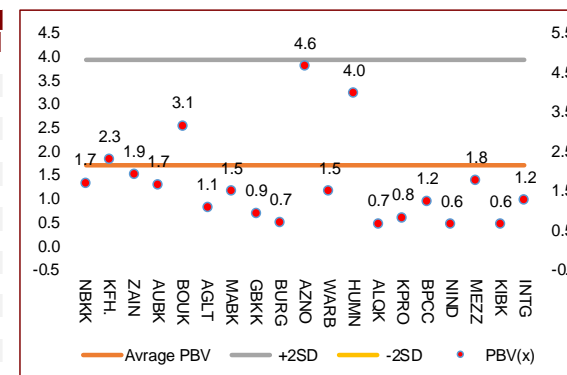


DAILY MARKET COVERAGE REPORT

NIC MENA SECURITIES - RESEARCH AND STUDIES DEP



Premier Market Company	Price			Valuation Multiples			MKT Cap Mn KD	Price Performance		ROE (%)	ROA (%)
	Close (KD)	Day Δ	Day % Δ	PBV(X)	PE(X)	DY%		MTD(%)	YTD (%)		
National Bank of Kuwait	0.857	0.006	0.71%	1.69	14.5	3.7%	5,820	0.3%	-15.3%	11.7%	1.4%
Kuwait Finance House	0.624	0.000	0.00%	2.30	18.9	2.6%	4,735	-0.3%	-15.4%	12.2%	1.3%
Mobile Telecommunications	0.572	-0.001	-0.17%	1.91	11.4	5.4%	2,475	-2.9%	-4.5%	16.7%	4.6%
Ahli United Bank BSC	0.219	-0.005	-2.23%	1.65	9.6	5.5%	2,114	-6.0%	-25.4%	17.1%	1.8%
Boubyan Bank	0.596	0.002	0.34%	3.14	28.8	1.1%	1,805	2.2%	-3.2%	10.9%	1.2%
Agility Public Warehousing	0.623	0.002	0.32%	1.08	13.7	2.9%	1,192	-0.3%	-12.6%	7.9%	4.2%
Mabane Co.	0.635	0.000	0.00%	1.48	12.4	1.6%	702	-0.3%	-25.6%	11.9%	5.8%
Gulf Bank	0.212	0.001	0.47%	0.93	9.7	4.7%	616	-0.5%	-30.0%	9.6%	1.0%
Burgan Bank	0.198	0.000	0.00%	0.69	6.1	5.8%	519	0.0%	-34.9%	11.3%	1.2%
Shamal Az-Zour Al-Oula Power & Water	0.323	-0.002	-0.62%	4.64	28.9	0.0%	355	0.6%	0.0%	16.1%	2.3%
Warba Bank	0.206	-0.005	-2.37%	1.49	19.6	0.0%	324	4.0%	-21.0%	7.6%	0.5%
Human Soft Holding	2.623	-0.011	-0.42%	3.97	8.9	7.0%	319	3.8%	-12.9%	44.6%	30.3%
Qurain Petrochemical Industries	0.274	-0.001	-0.36%	0.67	9.9	5.6%	280	-3.9%	-11.6%	6.7%	3.6%
Kuwait Projects Company Holding	0.151	-0.001	-0.66%	0.81	9.1	6.1%	274	1.3%	-30.1%	8.9%	0.3%
Boubyan Petrochemical	0.537	-0.002	-0.37%	1.21	22.9	9.6%	271	0.2%	-19.6%	5.3%	2.1%
National Industries Group Holding	0.169	0.007	4.32%	0.64	5.2	6.4%	241	8.3%	-29.9%	12.3%	3.7%
Mezzan Holding	0.613	-0.019	-3.01%	1.77	33.1	2.7%	187	-5.4%	23.0%	5.3%	2.2%
Kuwait International Bank	0.177	-0.001	-0.56%	0.64	10.5	5.7%	180	2.9%	-32.2%	6.1%	0.6%
Integrated Holding	0.388	0.002	0.52%	1.24	10.8	10.3%	85	10.9%	-29.6%	11.5%	8.5%
Total		-2.80	-0.05%	1.63	13.60	3.72%	22,495	-0.6%	-16.6%	11.96%	1.55%



Premier Market Discription	Price			Moving Average		RSI 14 Day	MKT Cap Mn KD	Price Performance		52 Week (KD)	
	Close (KD)	Day Δ	Day % Δ	50 Day	200 Day			MTD(%)	YTD (%)	High	Low
Premier Index	5,813	-2.80	-0.05%	5,624	5,910	58	22,495	-0.6%	-16.6%	7,172	4,499

Top 5 Performrs (Today's Price Change)

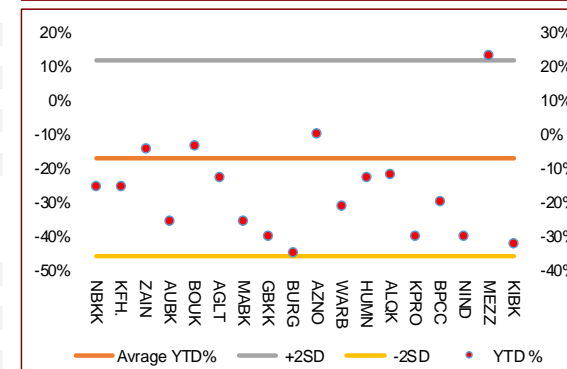
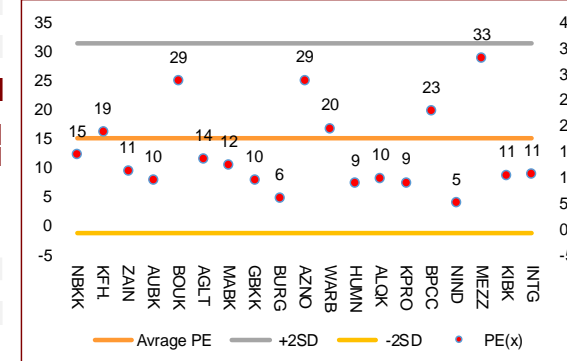
National Industries Group Holding	0.169	0.007	4.32%	0.160	0.189	58	241	8.3%	-29.9%	0.247	0.121
National Bank of Kuwait	0.857	0.006	0.71%	0.817	0.854	62	5,820	0.3%	-15.3%	1.062	0.654
Integrated Holding	0.388	0.002	0.52%	0.383	0.456	60	85	10.9%	-29.6%	0.600	0.342
Gulf Bank	0.212	0.001	0.47%	0.207	0.241	45	616	-0.5%	-30.0%	0.317	0.180
Boubyan Bank	0.596	0.002	0.34%	0.546	0.539	76	1,805	2.2%	-3.2%	0.638	0.380

Middel Performrs (Today's Price Change)

Agility Public Warehousing	0.623	0.002	0.32%	0.637	0.614	54	1,192	-0.3%	-12.6%	0.748	0.357
Kuwait Finance House	0.624	0.000	0.00%	0.606	0.637	59	4,735	-0.3%	-15.4%	0.761	0.473
Mabane Co.	0.635	0.000	0.00%	0.638	0.688	36	702	-0.3%	-25.6%	0.877	0.434
Burgan Bank	0.198	0.000	0.00%	0.192	0.238	56	519	0.0%	-34.9%	0.337	0.175
Mobile Telecommunications	0.572	-0.001	-0.17%	0.564	0.548	29	2,475	-2.9%	-4.5%	0.604	0.407
Qurain Petrochemical Industries	0.274	-0.001	-0.36%	0.283	0.269	34	280	-3.9%	-11.6%	0.341	0.163
Boubyan Petrochemical	0.537	-0.002	-0.37%	0.573	0.588	44	271	0.2%	-19.6%	0.800	0.395
Human Soft Holding	2.623	-0.011	-0.42%	2.681	2.819	60	319	3.8%	-12.9%	3.470	1.944
Kuwait International Bank	0.177	-0.001	-0.56%	0.172	0.209	71	180	2.9%	-32.2%	0.270	0.162

Bottom 5 Performrs (Today's Price Change)

Mezzan Holding	0.613	-0.019	-3.01%	0.606	0.552	44	187	-5.4%	23.0%	0.665	0.428
Warba Bank	0.206	-0.005	-2.37%	0.202	0.222	68	324	4.0%	-21.0%	0.279	0.164
Ahli United Bank BSC	0.219	-0.005	-2.23%	0.200	0.228	54	2,114	-6.0%	-25.4%	0.311	0.160
Kuwait Projects Company Holding	0.151	-0.001	-0.66%	0.154	0.182	58	274	1.3%	-30.1%	0.231	0.147
Shamal Az-Zour Al-Oula Power & Water	0.323	-0.002	-0.62%	0.112	0.028	45	355	0.6%	0.0%	0.500	0.297



DAILY MARKET COVERAGE REPORT

NIC MENA SECURITIES - RESEARCH AND STUDIES DEP



Banking Sector	Price			Valuation Multiples			MKT Cap	Price Performance		Trading Indicators		ROE	ROA	52 Week (KD)	
	Company	Close (KD)	Day Δ	Day % Δ	PBV(X)	PE(X)		DY%	Mn KD	MTD(%)	YTD (%)			Value (Mn KD)	(Mn Shrs)
National Bank of Kuwait	0.857	0.006	0.71%	1.69	14.50	3.7%	5,820	0%	-15%	4.34	5.05	11.7%	1.4%	1.062	0.654
Kuwait Finance House	0.624	0.000	0.00%	2.30	18.86	2.6%	4,735	0%	-15%	3.62	5.80	12.2%	1.3%	0.761	0.473
Ahli United Bank BSC	0.219	-0.005	-2.23%	1.65	9.65	5.5%	2,114	-6%	-25%	4.30	19.48	17.1%	1.8%	0.311	0.160
Boubyan Bank	0.596	0.002	0.34%	3.14	28.81	1.1%	1,805	2%	-3%	0.89	1.49	10.9%	1.2%	0.638	0.380
Commercial Bank of Kuwait	0.480	0.000	0.00%	1.27	0.00	3.9%	927	-4%	-9%	0.00	0.00	0.0%	0.0%	0.555	0.465
Gulf Bank	0.212	0.001	0.47%	0.93	9.67	4.7%	616	0%	-30%	0.67	3.15	9.6%	1.0%	0.317	0.180
Burgan Bank	0.198	0.000	0.00%	0.69	6.13	5.8%	519	0%	-35%	0.09	0.48	11.3%	1.2%	0.337	0.175
Ahli United Bank	0.274	0.002	0.74%	1.17	9.71	5.0%	534	6%	-16%	0.14	0.52	12.1%	1.3%	0.330	0.225
Warba Bank	0.206	-0.005	-2.37%	1.49	19.62	0.0%	324	4%	-21%	1.54	7.41	7.6%	0.5%	0.279	0.164
Al Ahli Bank of Kuwait	0.177	-0.001	-0.56%	0.51	9.91	7.9%	284	4%	-30%	0.04	0.24	5.1%	0.6%	0.310	0.156
Kuwait International Bank	0.177	-0.001	-0.56%	0.64	10.53	5.7%	180	3%	-32%	1.55	8.75	6.1%	0.6%	0.270	0.162
Ithmaar Holding	0.022	0.000	0.00%	0.08	323.35	0.0%	65	0%	0%	0.00	0.00	0.0%	0.0%	0.022	0.022
Total Banking Sector - 12 Companies				1.51	14.94	3.5%	17,924			17.18	52.38	10.13%	1.18%		

Basic materials	Price			Valuation Multiples			MKT Cap	Price Performance		Trading Indicators		ROE	ROA	52 Week (KD)	
	Company	Close (KD)	Day Δ	Day % Δ	PBV(X)	PE(X)		DY%	Mn KD	MTD(%)	YTD (%)			Value (Mn KD)	(Mn Shrs)
Boubyan Petrochemical	0.537	-0.002	-0.37%	1.21	22.92	9.6%	271	0%	-20%	0.05	0.10	5.3%	2.1%	0.800	0.395
Qurain Petrochemical Industries	0.274	-0.001	-0.36%	0.67	9.91	5.6%	280	-4%	-12%	0.16	0.58	6.7%	3.6%	0.341	0.163
Al Kout Industrial Projects	0.769	0.000	0.00%	2.50	16.21	6.5%	78	0%	-10%	0.00	0.00	15.4%	11.3%	0.850	0.769
Kuwait Foundry	0.244	0.002	0.83%	0.82	19.72	21.8%	18	2%	-27%	0.00	0.00	4.1%	3.8%	0.510	0.192
Total Basic materials - 4 Companies				0.93	14.13	7.8%	646			0.21	0.68	6.57%	5.07%		

Consumer goods	Price			Valuation Multiples			MKT Cap	Price Performance		Trading Indicators		ROE	ROA	52 Week (KD)	
	Company	Close (KD)	Day Δ	Day % Δ	PBV(X)	PE(X)		DY%	Mn KD	MTD(%)	YTD (%)			Value (Mn KD)	(Mn Shrs)
Mezzan Holding	0.613	-0.019	-3.01%	1.77	33.13	2.7%	187	-5%	23%	0.26	0.42	5.3%	2.2%	0.665	0.428
Livestock Transport and Trading	0.184	-0.003	-1.60%	0.96	32.80	0.1%	38	-1%	5%	0.00	0.00	2.9%	2.0%	0.200	0.152
Danah Al Safat Foodstuff	0.012	0.000	0.00%	0.25	(0.30)	0.1%	1	0%	-25%	0.00	0.00	-84.8%	-43.2%	0.029	0.010
Total Basic materials - 3 Companies				1.50	91.75	2.3%	226			0.26	0.43	1.64%	0.90%		

DAILY MARKET COVERAGE REPORT

NIC MENA SECURITIES - RESEARCH AND STUDIES DEP



Consumer services		Price			Valuation Multiples			MKT Cap	Price Performance		Trading Indicators		ROE	ROA	52 Week (KD)	
Company	Close (KD)	Day Δ	Day % Δ	PBV(X)	PE(X)	DY%	Mn KD	MTD(%)	YTD (%)	Value (Mn KD)	(Mn Shrs)	(%)	(%)	High	Low	
Jazeera Airways	0.576	-0.003	-0.52%	2.86	7.71	6.1%	115	3%	-48%	0.04	0.07	37.1%	9.0%	1.110	0.372	
Kuwait National Cinema	0.660	0.004	0.61%	0.76	7.14	7.3%	61	-2%	-37%	0.04	0.06	10.6%	7.2%	1.050	0.600	
Al Soor Fuel Marketing	0.110	-0.001	-0.90%	0.68	12.87	4.5%	45	0%	-12%	0.00	0.01	5.3%	3.7%	0.129	0.096	
Oula Fuel Marketing	0.109	-0.002	-1.80%	0.65	11.41	5.4%	44	-2%	-14%	0.00	0.02	5.7%	3.2%	0.134	0.095	
Sultan Center Food Products	0.055	0.001	1.66%	0.68	13.84	0.0%	31	0%	6%	0.00	0.07	4.9%	0.7%	0.060	0.036	
IFA Hotels and Resorts	0.023	-0.001	-3.39%	0.82	(0.62)	0.0%	14	-5%	-57%	0.00	0.11	-131.5%	-8.1%	0.062	0.021	
Jiyad Holding	0.037	0.001	2.80%	0.33	7.32	0.0%	13	9%	-8%	0.00	0.01	4.5%	2.8%	0.047	0.029	
Kuwait Resorts	0.047	0.000	-0.21%	0.32	8.59	0.0%	9	3%	-18%	0.02	0.51	3.8%	3.2%	0.060	0.038	
Future Kid Entertainment and Real Estate	0.077	0.000	0.00%	0.44	28.90	15.1%	8	0%	-13%	0.00	0.00	1.5%	0.9%	0.110	0.069	
Al Eid Food	0.064	0.000	0.00%	0.36	4.26	0.0%	6	-4%	-19%	0.00	0.00	8.4%	6.1%	0.096	0.046	
Alrai Media Group	0.037	0.000	0.00%	0.83	(2.41)	0.0%	9	0%	-2%	0.00	0.00	-34.2%	-20.0%	0.046	0.031	
Kuwait Hotels	0.086	0.000	0.00%	1.21	(4.97)	0.0%	5	-2%	-14%	0.00	0.00	-24.4%	-13.2%	0.101	0.069	
Palms Agro Production	0.061	0.000	0.00%	0.51	(43.00)	16.3%	3	8%	52%	0.00	0.00	-1.2%	-0.9%	0.062	0.025	
Kuwait Cable Vision	0.014	0.000	0.00%	0.52	(11.65)	0.0%	1	0%	0%	0.00	0.00	-4.5%	-3.0%	0.026	0.012	
Total Consumer services - 14 Companies				0.82	34.55	4.9%	364			0.11	0.86	2.38%	2.72%			

Financial services		Price			Valuation Multiples			MKT Cap	Price Performance		Trading Indicators		ROE	ROA	52 Week (KD)	
Company	Close (KD)	Day Δ	Day % Δ	PBV(X)	PE(X)	DY%	Mn KD	MTD(%)	YTD (%)	Value (Mn KD)	(Mn Shrs)	(%)	(%)	High	Low	
Egypt Kuwait Holding	0.370	0.000	0.00%	2.19	12.49	5.3%	379	-1%	-18%	0.00	0.00	17.6%	7.1%	0.500	0.318	
Kuwait Projects Company Holding	0.151	-0.001	-0.66%	0.81	9.12	6.1%	274	1%	-30%	0.20	1.32	8.9%	0.3%	0.231	0.147	
National Industries Group Holding	0.169	0.007	4.32%	0.64	5.21	6.4%	241	8%	-30%	2.32	14.01	12.3%	3.7%	0.247	0.121	
GFH Financial Group	0.052	0.001	1.16%	0.57	7.13	5.4%	177	3%	-24%	0.02	0.36	8.0%	1.3%	0.074	0.042	
Alimtiq Investment Group	0.088	-0.001	-1.34%	0.42	4.60	9.0%	91	4%	-29%	0.17	1.89	9.1%	5.2%	0.137	0.071	
Commercial Facilities	0.181	0.000	0.00%	0.56	6.97	9.3%	92	-2%	-17%	0.00	0.00	8.0%	4.2%	0.235	0.179	
National Investments	0.141	-0.002	-1.40%	0.62	10.49	5.7%	112	18%	2%	0.48	3.44	5.9%	5.0%	0.155	0.080	
Tamdeen Investment	0.336	0.000	0.00%	0.41	13.93	3.5%	115	35%	-3%	0.00	0.00	3.0%	2.2%	0.400	0.199	
Kuwait Investment	0.119	0.001	0.85%	0.52	3.73	8.5%	65	5%	-21%	0.05	0.40	13.9%	6.0%	0.172	0.095	
Noor Financial Investment	0.167	0.000	0.00%	1.02	8.17	3.0%	66	1%	37%	0.06	0.36	12.5%	7.5%	0.184	0.076	
Al Bareeq Holding	0.102	0.000	0.00%	1.07	20.37	0.0%	45	-3%	2%	0.00	0.00	5.2%	5.0%	0.110	0.100	

DAILY MARKET COVERAGE REPORT

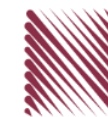
NIC MENA SECURITIES - RESEARCH AND STUDIES DEP



Financial services	Price			Valuation Multiples			MKT Cap	Price Performance		Trading Indicators		ROE	ROA	52 Week (KD)		
	Company	Close (KD)	Day Δ	Day % Δ	PBV(X)	PE(X)	DY%	Mn KD	MTD(%)	YTD (%)	Value (Mn KD)	(Mn Shrs)	(%)	(%)	High	Low
Kuwait Financial Centre	0.080	-0.001	-0.87%	0.40	5.50	6.2%	38	-1%	-25%	0.02	0.22	7.3%	3.5%	0.121	0.070	
Aayan Leasing and Investment	0.080	0.002	1.91%	0.94	(4.39)	2.3%	64	35%	72%	1.84	22.73	-21.4%	-4.9%	0.079	0.032	
Arabi Group Holdings	0.198	0.000	0.00%	1.07	(19.90)	0.0%	33	0%	-28%	0.00	0.00	-5.4%	-0.6%	0.337	0.077	
Arzan Financial Group for Financing and Invest	0.053	-0.006	-9.86%	0.43	38.53	0.0%	42	-9%	124%	1.79	32.78	1.1%	0.7%	0.064	0.022	
Privatization Holding	0.042	0.001	2.20%	0.31	(37.78)	0.0%	26	0%	-15%	0.01	0.19	-0.8%	-0.5%	0.059	0.037	
Asiya Capital Investments	0.031	0.000	-0.63%	0.34	16.18	0.2%	24	1%	-23%	0.00	0.05	2.1%	2.0%	0.041	0.029	
KAMCO Investment	0.070	0.000	-0.14%	0.42	7.90	0.0%	24	0%	-22%	0.00	0.07	5.4%	2.3%	0.111	0.060	
Kuwait and Middle East Financial Investment	0.125	-0.002	-1.57%	2.03	49.92	0.0%	33	5%	35%	0.06	0.50	4.1%	3.2%	0.138	0.063	
Umm Al Qaiwain General Investment Co	0.087	-0.005	-4.93%	0.58	16.29	4.2%	31	-2%	30%	0.00	0.00	3.6%	3.3%	0.096	0.052	
Securities House	0.045	0.000	0.90%	0.61	(65.79)	0.0%	25	12%	-1%	0.56	12.34	-0.9%	-0.7%	0.050	0.027	
Gulf Investment House	0.099	0.000	0.30%	1.11	182.75	0.0%	40	6%	53%	0.15	1.47	0.6%	0.5%	0.100	0.038	
Coast Investment and Development	0.034	0.000	0.00%	0.36	34.28	0.0%	20	1%	-14%	0.00	0.12	1.1%	1.0%	0.045	0.026	
Bayan Investment	0.048	0.000	0.00%	0.48	(24.65)	0.0%	17	0%	25%	0.00	0.00	-1.9%	-0.8%	0.053	0.031	
First Investment	0.028	-0.001	-3.45%	0.43	(0.38)	0.0%	18	-7%	-19%	0.07	2.54	-113.6%	-62.0%	0.045	0.022	
Al Madar Finance and Investment	0.086	-0.001	-0.92%	0.78	12.90	0.0%	18	2%	-6%	0.02	0.23	6.1%	5.0%	0.148	0.062	
Inovent BSC Public	0.068	0.000	-0.15%	0.47	9.11	8.7%	20	20%	6%	0.00	0.03	5.2%	2.9%	0.072	0.044	
Al Manar Financing and Leasing	0.049	0.000	0.00%	0.45	12.65	1.0%	15	6%	-5%	0.00	0.01	3.5%	2.7%	0.060	0.037	
Osoul Investment	0.082	0.000	0.00%	0.62	6.89	0.0%	13	-2%	9%	0.01	0.16	9.0%	8.2%	0.121	0.070	
National International Holding	0.066	0.003	3.94%	0.35	7.93	4.5%	14	8%	-10%	0.00	0.00	4.4%	3.3%	0.081	0.049	
Kuwait Finance and Investment	0.047	0.000	0.86%	0.37	21.01	0.0%	14	4%	-5%	0.00	0.06	1.8%	1.2%	0.058	0.038	
Manazel Holding	0.033	0.000	-0.61%	0.71	20.89	0.0%	14	-2%	-17%	0.07	2.02	3.4%	0.8%	0.048	0.021	
Amar Finance and Leasing	0.049	0.000	0.00%	0.55	41.36	0.0%	10	-4%	30%	0.00	0.00	1.3%	1.2%	0.064	0.037	
UniCap Investment and Finance	0.040	0.000	0.00%	0.40	(19.97)	0.0%	9	5%	-29%	0.01	0.26	-2.0%	-1.0%	0.057	0.035	
Gulf North Africa Holding	0.056	0.001	0.90%	0.75	72.41	0.0%	8	1%	-9%	0.00	0.05	1.0%	0.6%	0.062	0.052	
International Financial Advisors	0.031	0.000	0.00%	0.93	(0.42)	2.1%	8	0%	-42%	0.00	0.00	-222.8%	-19.3%	0.060	0.027	
Kuwait Syrian Holding Co	0.025	0.000	-0.40%	0.21	(12.82)	0.0%	4	-5%	-20%	0.00	0.00	-1.7%	-1.1%	0.043	0.022	
Amwal International Investment	0.034	0.000	0.00%	0.64	12.68	0.0%	6	-5%	14%	0.00	0.00	5.0%	2.6%	0.055	0.030	
Al Salam Group Holding	0.025	-0.001	-2.31%	0.22	191.75	0.0%	7	10%	-13%	0.43	16.94	0.1%	0.1%	0.036	0.018	
Warba Capital Holding	0.047	0.000	-0.42%	0.53	(7.50)	0.0%	5	-5%	-27%	0.00	0.09	-7.0%	-6.2%	0.115	0.045	
Credit Rating and Collection	0.032	-0.003	-9.09%	0.98	(21.53)	0.0%	5	-5%	68%	0.00	0.00	-4.6%	-4.3%	0.037	0.019	
National Consumer Holding	0.052	0.000	0.00%	0.58	256.31	0.0%	5	-5%	-5%	0.00	0.00	0.2%	0.2%	0.100	0.010	
Al Madina for Finance and Investment	0.012	0.000	-2.44%	0.40	(2.26)	0.0%	5	13%	-19%	0.08	6.45	-17.9%	-7.7%	0.019	0.009	
Ektitab Holding	0.015	0.000	1.35%	0.36	(10.56)	0.0%	5	19%	1%	0.05	3.45	-3.4%	-3.0%	0.017	0.010	
Al Deera Holding	0.016	0.000	0.00%	0.70	(9.02)	0.0%	3	0%	-20%	0.00	0.00	-7.7%	-1.7%	0.022	0.011	
Al Mal Investment Company	0.009	0.000	1.08%	0.42	(0.88)	0.0%	3	4%	-5%	0.01	0.85	-47.6%	-23.3%	0.016	0.008	
Gulf Franchising Holding	0.050	0.000	0.00%	0.79	(2.18)	0.0%	2	-14%	-33%	0.00	0.00	-36.2%	-10.8%	0.160	0.001	
Tamkeen Holding	0.005	0.000	0.00%	0.05	(7.18)	0.0%	0	0%	0%	0.00	0.00	-0.7%	-0.7%	0.005	0.005	
Total Financial services - 48 Companies				0.66	15.78	4.6%	2,286				8.49	125.40	4.18%	4.11%		

DAILY MARKET COVERAGE REPORT

NIC MENA SECURITIES - RESEARCH AND STUDIES DEP



Health care	Price			Valuation Multiples			MKT Cap	Price Performance		Trading Indicators		ROE	ROA	52 Week (KD)	
Company	Close (KD)	Day Δ	Day % Δ	PBV(X)	PE(X)	DY%	Mn KD	MTD(%)	YTD (%)	Value (Mn KD)	(Mn Shrs)	(%)	(%)	High	Low
Al-Maidan Clinic for Oral Health Services	1.220	0.000	0.00%	7.90	47.78	0.6%	305	0%	0%	0.00	0.00	16.5%	10.9%	1.240	1.220
Advanced Technology	0.627	0.000	0.00%	1.63	51.04	2.4%	94	0%	-23%	0.00	0.00	3.2%	0.7%	0.900	0.580
Yiaco Medical	0.707	0.000	0.00%	6.06	52.72	0.0%	12	0%	0%	0.00	0.00	11.5%	0.6%	0.707	0.707
Total Health care - 3 Companies				4.19	48.62	1.0%	411			0.00	0.00	8.61%	4.68%		

Industrials	Price			Valuation Multiples			MKT Cap	Price Performance		Trading Indicators		ROE	ROA	52 Week (KD)	
Company	Close (KD)	Day Δ	Day % Δ	PBV(X)	PE(X)	DY%	Mn KD	MTD(%)	YTD (%)	Value (Mn KD)	(Mn Shrs)	(%)	(%)	High	Low
Agility Public Warehousing	0.623	0.002	0.32%	1.08	13.74	2.9%	1,192	0%	-13%	0.44	0.72	7.9%	4.2%	0.748	0.357
Human Soft Holding	2.623	-0.011	-0.42%	3.97	8.90	7.0%	319	4%	-13%	0.08	0.03	44.6%	30.3%	3.470	1.944
ALAFCO Aviation Lease and Finance	0.157	-0.001	-0.63%	0.47	8.45	6.4%	149	0%	-42%	0.11	0.72	5.5%	1.4%	0.278	0.138
Kuwait Cement	0.174	0.000	0.00%	0.59	30.88	8.5%	124	0%	-29%	0.06	0.35	1.9%	1.3%	0.271	0.144
Gulf Cable and Electrical Industries	0.718	-0.017	-2.31%	0.86	35.61	3.8%	151	12%	48%	0.48	0.66	2.4%	2.2%	0.737	0.390
Integrated Holding	0.388	0.002	0.52%	1.24	10.81	10.3%	85	11%	-30%	0.40	1.03	11.5%	8.5%	0.600	0.342
Kuwait Portland Cement	0.788	0.014	1.81%	1.06	10.41	12.5%	79	8%	-20%	0.00	0.00	10.2%	8.2%	1.210	0.683
United Projects for Aviation Services	0.465	0.000	0.00%	0.98	7.96	4.5%	74	0%	-9%	0.00	0.00	12.3%	7.8%	0.512	0.367
Heavy Engineering Industries and Shipbuilding	0.368	-0.002	-0.54%	1.06	5.91	7.9%	66	1%	-9%	0.03	0.07	18.0%	5.9%	0.419	0.298
Educational Holding Group	0.300	0.000	0.00%	1.74	9.50	5.0%	74	0%	-32%	0.00	0.00	18.3%	16.7%	0.475	0.228
National Industries	0.154	-0.002	-1.28%	0.64	12.55	6.4%	54	-6%	-7%	0.00	0.00	5.1%	3.8%	0.175	0.143
ACICO Industries	0.099	0.000	0.00%	0.32	12.89	5.0%	33	5%	-26%	0.00	0.00	2.5%	0.6%	0.145	0.081
Kuwait Company for Process Plant Constructi	0.315	-0.009	-2.78%	1.25	6.75	5.7%	34	2%	31%	0.22	0.69	18.5%	7.7%	0.337	0.175
Ras Al Khaimah for White Cement and Constr	0.065	0.000	0.00%	0.51	19.94	8.4%	33	0%	0%	0.00	0.00	2.6%	2.0%	0.080	0.053
Gulf Cement	0.034	0.000	-0.87%	0.34	(12.44)	12.2%	28	14%	-38%	0.01	0.36	-2.7%	-2.2%	0.062	0.029
Combined Group Contracting	0.156	-0.002	-1.27%	0.54	7.03	13.2%	25	0%	-37%	0.08	0.54	7.7%	1.2%	0.251	0.138
Sharjah Cement and Industrial Development	0.042	0.000	0.00%	0.21	25.32	12.4%	26	0%	0%	0.00	0.00	0.8%	0.6%	0.064	0.042
KGL Logistics	0.027	0.000	-1.44%	0.20	4.45	0.1%	21	10%	-27%	0.19	6.84	4.6%	2.9%	0.043	0.023
Fujairah Cement Industries	0.035	0.000	1.16%	0.14	16.97	12.0%	12	11%	-22%	0.01	0.25	0.8%	0.4%	0.052	0.029
Shuaiba Industrial	0.130	0.000	0.00%	0.72	40.15	7.6%	13	5%	-16%	0.00	0.00	1.8%	1.4%	0.180	0.122
Kuwait and Gulf Link Transport	0.046	-0.001	-1.28%	0.19	14.00	0.0%	13	0%	-32%	0.02	0.37	1.4%	0.4%	0.080	0.042
National Cleaning	0.054	0.000	0.00%	0.32	7.23	9.4%	11	4%	-22%	0.01	0.17	4.4%	1.5%	0.088	0.047
Mubarrad Holding	0.059	-0.002	-2.66%	0.46	9.44	8.0%	10	5%	-33%	0.06	1.06	4.9%	4.1%	0.089	0.049
Specialities Group Holding	0.061	0.003	4.29%	0.30	6.57	0.0%	9	1%	-21%	0.00	0.06	4.5%	3.5%	0.078	0.050
Hilal Cement	0.094	0.000	0.00%	0.82	(7.72)	16.0%	10	-18%	-6%	0.00	0.00	-10.6%	-6.2%	0.126	0.063
National Ranges	0.016	0.000	1.91%	0.29	(1.17)	0.0%	4	3%	65%	0.23	13.62	-24.9%	-5.3%	0.018	0.007
Metal and Recycling	0.043	-0.002	-4.88%	0.36	(1.82)	0.0%	4	-1%	-14%	0.00	0.00	-19.7%	-10.1%	0.070	0.020
Salbookh Trading	0.035	0.001	2.34%	0.48	(2.05)	0.0%	4	28%	-30%	0.03	0.79	-23.2%	-15.9%	0.051	0.026
Equipment Holding	0.018	0.000	1.16%	0.35	(202.08)	0.0%	2	18%	-20%	0.01	0.30	-0.2%	-0.1%	0.024	0.013
Total Industrials - 29 Companies				0.85	12.67	5.2%	2,658			2.48	28.64	6.67%	5.05%		

DAILY MARKET COVERAGE REPORT

NIC MENA SECURITIES - RESEARCH AND STUDIES DEP



Insurance	Price			Valuation Multiples			MKT Cap	Price Performance		Trading Indicators		ROE	ROA	52 Week (KD)	
	Company	Close (KD)	Day Δ	Day % Δ	PBV(X)	PE(X)		DY%	Mn KD	MTD(%)	YTD (%)			Value (Mn KD)	(Mn Shrs)
Gulf Insurance Group	0.605	0.008	1.34%	1.04	8.44	6.1%	113	-1%	-8%	0.01	0.01	12.3%	1.7%	0.680	0.550
Al Ahleia Insurance	0.410	0.014	3.54%	0.77	8.26	8.2%	85	5%	-2%	0.03	0.07	9.4%	3.3%	0.424	0.367
Kuwait Insurance	0.356	-0.014	-3.78%	0.58	6.90	6.7%	66	2%	8%	0.00	0.00	8.5%	4.6%	0.387	0.300
Kuwait Reinsurance	0.205	0.005	2.50%	0.78	8.78	2.1%	41	5%	49%	0.00	0.00	8.9%	3.2%	0.200	0.126
Bahrain Kuwait Insurance	0.200	0.000	0.00%	0.93	12.87	6.1%	28	0%	0%	0.00	0.00	7.2%	1.1%	0.200	0.200
Warba Insurance	0.077	0.002	1.99%	0.34	10.93	0.0%	13	-2%	27%	0.00	0.03	3.1%	1.0%	0.094	0.051
First Takaful Insurance	0.040	0.000	0.00%	0.48	5.04	0.0%	4	0%	4%	0.00	0.00	9.6%	5.9%	0.056	0.031
Wethaq Takaful Insurance	0.022	-0.001	-3.86%	0.20	(28.35)	0.0%	2	-6%	-10%	0.00	0.19	-0.7%	-0.7%	0.035	0.018
Total Insurance - 8 Companies				0.74	8.39	5.9%	353			0.04	0.30	8.86%	3.00%		

Oil and Gas	Price			Valuation Multipels			MKT Cap	Price Performance		Trading Indicators		ROE	ROA	52 Week (KD)	
	Company	Close (KD)	Day Δ	Day % Δ	PBV(X)	PE(X)		DY%	Mn KD	MTD(%)	YTD (%)			Value (Mn KD)	(Mn Shrs)
Burgan for Well Drilling Trading and Maintenanc	0.087	0.004	4.82%	0.32	8.84	0.0%	20	27%	8%	0.00	0.00	3.6%	1.1%	0.098	0.060
Energy House Holding	0.022	0.000	-1.37%	0.67	(2.96)	0.0%	16	9%	-5%	0.00	0.06	-22.5%	-17.0%	0.036	0.014
Gulf Petroleum Investment	0.021	-0.001	-2.78%	0.23	(6.77)	0.0%	10	9%	5%	0.39	18.30	-3.4%	-2.3%	0.024	0.012
Independent Petroleum Group	0.430	0.000	0.00%	0.79	11.72	7.0%	78	-4%	-11%	0.00	0.00	6.8%	2.2%	0.497	0.375
National Petroleum Services	1.000	0.000	0.00%	2.38	8.53	7.0%	97	0%	-15%	0.00	0.00	27.9%	23.6%	1.389	0.903
Senergy Holding	0.017	0.000	-1.18%	0.33	(0.70)	0.0%	3	6%	-22%	0.01	0.39	-47.9%	-30.4%	0.027	0.014
Total Oil and Gas - 6 Companies				0.81	25.98	5.5%	224			0.40	18.75	3.10%	2.18%		

Real estate	Price			Valuation Multiples			MKT Cap	Price Performance		Trading Indicators		ROE	ROA	52 Week (KD)	
	Company	Close (KD)	Day Δ	Day % Δ	PBV(X)	PE(X)		DY%	Mn KD	MTD(%)	YTD (%)			Value (Mn KD)	(Mn Shrs)
Mabane Co.	0.635	0.000	0.00%	1.48	12.44	1.6%	702	0%	-26%	0.26	0.42	11.9%	5.8%	0.877	0.434
Salhia Real Estate	0.396	-0.001	-0.25%	1.20	9.10	5.0%	196	0%	-5%	0.02	0.05	13.2%	5.8%	0.460	0.324
Commercial Real Estate	0.097	0.000	0.00%	0.59	12.01	5.9%	175	4%	6%	0.00	0.00	5.0%	2.7%	0.103	0.083
Tamdeen Real Estate	0.245	0.004	1.66%	0.35	11.95	4.1%	99	-2%	-24%	0.00	0.00	3.0%	2.2%	0.343	0.241
National Real Estate	0.071	0.000	-0.28%	0.37	8.92	0.0%	102	1%	-18%	0.07	0.94	4.2%	2.4%	0.090	0.058
Kuwait Real Estate	0.097	-0.001	-1.12%	0.68	12.38	0.4%	87	4%	-7%	0.07	0.73	5.5%	2.2%	0.115	0.070
United Real Estate	0.052	0.000	0.00%	0.30	(7.74)	0.0%	56	4%	-15%	0.00	0.00	-3.9%	-1.2%	0.063	0.045
First Dubai for Real Estate Development	0.040	0.000	1.00%	0.54	44.30	1.0%	40	7%	15%	0.25	6.11	1.2%	1.0%	0.055	0.027

DAILY MARKET COVERAGE REPORT

NIC MENA SECURITIES - RESEARCH AND STUDIES DEP



Real estate Company	Price			Valuation Multiples			MKT Cap	Price Performance		Trading Indicators		ROE	ROA	52 Week (KD)	
	Close (KD)	Day Δ	Day % Δ	PBV(X)	PE(X)	DY%	Mn KD	MTD(%)	YTD (%)	Value (Mn KD)	(Mn Shrs)	(%)	(%)	High	Low
Al Mazaya Holding	0.053	0.000	-0.75%	0.42	(3.79)	0.1%	33	5%	-10%	0.08	1.47	-11.0%	-3.8%	0.067	0.047
Dar Al Thuraya Real Estate	0.129	0.002	1.57%	1.23	34.01	0.0%	19	1%	84%	0.00	0.00	3.6%	3.6%	0.190	0.040
Injazzat Real Estate Development	0.077	-0.002	-1.92%	0.49	(3.67)	9.0%	26	3%	-4%	0.01	0.11	-13.4%	-7.0%	0.091	0.061
Ajial Real Estate Entertainment	0.142	0.007	5.19%	0.22	13.72	0.0%	27	8%	-18%	0.00	0.00	1.6%	1.4%	0.213	0.115
Arkan Al Kuwait Real Estate	0.086	0.004	4.27%	0.61	9.26	9.1%	21	2%	-4%	0.00	0.03	6.6%	3.5%	0.100	0.076
Al Argan International Real Estate	0.083	0.000	0.00%	0.24	26.93	5.9%	21	-5%	-21%	0.00	0.00	0.9%	0.3%	0.141	0.060
Al-Enmaa Real Estate	0.044	-0.001	-1.56%	0.44	11.71	0.0%	20	2%	-29%	0.05	1.02	3.8%	2.4%	0.079	0.037
Aayan Real Estate	0.060	0.001	1.19%	0.35	11.68	8.0%	25	16%	-19%	0.02	0.32	3.0%	1.9%	0.080	0.048
Dalqan Real Estate	0.350	0.000	0.00%	2.91	59.01	0.0%	19	0%	0%	0.00	0.00	4.9%	4.9%	0.350	0.350
Kuwait Business Town Real Estate	0.026	-0.001	-1.89%	0.24	6.64	0.3%	16	10%	-40%	0.04	1.46	3.6%	2.7%	0.046	0.022
Tijara and Realestate Investment	0.040	0.000	0.00%	0.37	10.50	4.9%	15	-5%	-20%	0.00	0.00	3.6%	1.9%	0.055	0.034
Munshaat Real Estate Projects	0.063	0.000	-0.16%	0.43	23.37	3.3%	20	27%	-14%	0.01	0.10	1.8%	0.7%	0.085	0.045
Aqar Real Estate Investments	0.058	0.000	0.00%	0.42	4.85	8.5%	12	-11%	-27%	0.00	0.00	8.7%	7.3%	0.089	0.058
Sokouk Holding	0.027	0.000	-0.75%	0.33	(4.44)	0.0%	15	15%	-24%	0.04	1.47	-7.4%	-4.7%	0.040	0.022
Al-Arabiya Real Estate	0.025	0.000	0.80%	0.22	7.64	2.5%	13	10%	-15%	0.08	3.16	2.9%	1.1%	0.033	0.020
Mashaer Holding	0.057	0.000	-0.18%	0.44	6.12	0.0%	10	5%	-27%	0.01	0.22	7.1%	5.0%	0.086	0.048
Osos Holding Group	0.094	-0.001	-0.95%	0.75	7.09	10.1%	10	-1%	-6%	0.00	0.03	10.5%	7.0%	0.118	0.084
Abyaar Real Estate Development	0.007	0.000	2.78%	0.21	(0.52)	0.0%	8	1%	-5%	0.03	3.78	-40.9%	-12.4%	0.014	0.005
Ream Real Estate	0.204	0.000	0.00%	1.56	(8.21)	1.1%	22	0%	132%	0.00	0.00	-19.0%	-10.1%	0.204	0.060
Investors Holding Group	0.023	0.006	36.36%	1.14	(1.07)	0.0%	14	71%	186%	0.35	18.07	-106.5%	-57.2%	0.017	0.007
Al Massaleh Real Estate	0.035	0.000	0.00%	0.39	(4.88)	0.0%	8	20%	-5%	0.00	0.00	-8.1%	-1.9%	0.040	0.026
Kuwait Real Estate Holding	0.023	-0.002	-6.48%	0.03	0.62	7.7%	4	-10%	-20%	0.00	0.20	5.5%	2.2%	0.034	0.023
Kuwait Remal Real Estate	0.018	0.000	2.29%	0.27	(2.46)	0.0%	5	23%	-27%	0.00	0.27	-11.0%	-3.9%	0.027	0.013
Real Estate Trade Centers	0.028	0.000	1.45%	0.15	159.41	0.0%	4	7%	16%	0.00	0.14	0.1%	0.1%	0.050	0.018
Taameer Real Estate Investment	0.020	0.000	-1.93%	0.30	(4.29)	0.0%	5	6%	-25%	0.11	5.44	-7.0%	-4.5%	0.034	0.013
Al Masaken International Real Estate Developr	0.031	0.000	0.00%	0.35	37.93	0.5%	3	0%	-29%	0.00	0.00	0.9%	0.4%	0.074	0.027
Mena Real Estate	0.028	0.000	0.00%	0.19	(61.74)	0.0%	4	14%	-32%	0.08	2.72	-0.3%	-0.2%	0.043	0.021
Sanam Real Estate	0.030	0.000	0.00%	0.38	40.63	0.0%	4	0%	-25%	0.00	0.00	0.9%	0.9%	0.043	0.027
Ajwan Gulf Real Estate	0.011	0.000	0.00%	0.19	(7.68)	0.0%	2	0%	-29%	0.00	0.00	-2.5%	-2.2%	0.016	0.009
Effect Real Estate	0.021	0.000	0.00%	0.29	(8.85)	4.9%	2	0%	0%	0.00	0.00	-3.3%	-3.2%	0.021	0.021
Al Mudon International Real Estate	0.016	0.000	0.00%	0.12	(8.22)	0.0%	2	0%	-35%	0.00	0.00	-1.5%	-1.4%	0.029	0.015
Total Real estate - 39 Companies				0.61	21.86	2.6%	1,867			1.58	48.24	2.79%	2.96%		

DAILY MARKET COVERAGE REPORT

NIC MENA SECURITIES - RESEARCH AND STUDIES DEP



Technology	Price			Valuation Multiples			MKT Cap	Price Performance		Trading Indicators		ROE	ROA	52 Week (KD)	
	Company	Close (KD)	Day Δ	Day % Δ	PBV(X)	PE(X)		DY%	Mn KD	MTD(%)	YTD (%)			Value (Mn KD)	(Mn Shrs)
Automated Systems	0.069	-0.001	-1.29%	0.54	(66.83)	5.8%	7	1%	-3%	0.00	0.06	-0.8%	-0.7%	0.086	0.051
Total Technology - 1 Companies				0.54	(66.83)	5.8%	7			0.00	0.06	-0.81%	-0.73%		

Telecom	Price			Valuation Multiples			MKT Cap	Price Performance		Trading Indicators		ROE	ROA	52 Week (KD)	
	Company	Close (KD)	Day Δ	Day % Δ	PBV(X)	PE(X)		DY%	Mn KD	MTD(%)	YTD (%)			Value (Mn KD)	(Mn Shrs)
Mobile Telecommunications	0.572	-0.001	-0.17%	1.91	11.41	5.4%	2,475	-3%	-4%	1.60	2.79	16.7%	4.6%	0.604	0.407
Kuwait Telecommunications	0.861	0.001	0.12%	2.00	9.86	4.1%	430	2%	9%	0.02	0.02	20.2%	11.1%	0.870	0.680
National Mobile Telecommunications	0.592	0.007	1.20%	0.52	9.85	10.9%	297	3%	-28%	0.15	0.25	5.3%	2.4%	0.835	0.550
AAN Digital Services	0.012	0.000	0.00%	0.34	37.83	0.0%	10	12%	-14%	0.11	9.59	0.9%	0.7%	0.021	0.009
Hayat Communications	0.065	-0.002	-3.59%	0.55	27.33	0.0%	6	-21%	-14%	0.01	0.17	2.0%	0.8%	0.098	0.030
Telecom - 5 Companies				1.51	11.05	5.7%	3,217			1.88	12.82	13.70%	7.86%		

Utilities	Price			Valuation Multiples			MKT Cap	Price Performance		Trading Indicators		ROE	ROA	52 Week (KD)	
	Company	Close (KD)	Day Δ	Day % Δ	PBV(X)	PE(X)		DY%	Mn KD	MTD(%)	YTD (%)			Value (Mn KD)	(Mn Shrs)
Shamal Az-Zour Al-Oula Power & Water	0.323	-0.002	-0.62%	4.64	28.88	0.0%	355	1%	0%	0.74	2.29	16.1%	2.3%	0.500	0.297
Total Utilities - 1 Companies				4.64	28.88	0.0%	355			0.74	2.29	16.06%	2.26%		

Total Market 173 Companies				1.18	14.82	3.99%	30,539			33.37	290.85	7.97%	2.77%		
-----------------------------------	--	--	--	-------------	--------------	--------------	---------------	--	--	--------------	---------------	--------------	--------------	--	--

End of Report

The information contained in this document is proprietary to NIC and is for use only by the persons to whom it is issued. This document is confidential and may not be distributed either in part or in whole without the express agreement of NIC. It is intended solely for the use of the individual or entity to whom it is addressed and others authorized to receive it.



شركة الاستثمار الوطنية
NATIONAL INVESTMENTS COMPANY

Sharq, Al Mutanabi Street, Khaleejia Tower | P.O. Box 25667, Safat 13117, Kuwait

T.: +965 2226 6666 | Fax: +965 2226 6793 | www.nic.com.kw