

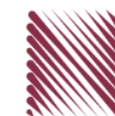
شركة الاستثمارات الوطنية
NATIONAL INVESTMENTS COMPANY

Boursa Kuwait – Daily Market Report
MENA Securities – Research & Studies Dep.

Tuesday, September 22, 2020

DAILY MARKET COVERAGE REPORT

NIC MENA SECURITIES - RESEARCH AND STUDIES DEP



Index	Close	DTD Chg Net	DTD (%)	YTD (%)	52W High	52W Low	MKT CAP Bn (KD)	PBV (X)	PE (X)	DY (%)
All Share Index	5,577.77	44.04	0.80%	-11.3%	6,416.43	4,339.58	32.32	1.29	15.61	3.77%
Premier Index	6,178.64	62.52	1.02%	-11.6%	7,172.32	4,498.65	24.13	1.74	14.50	3.46%
Main Index	4,384.87	5.93	0.14%	-10.8%	4,932.47	3,965.63	8.19	0.73	20.14	4.66%
NIC 50 Index	6,844.20	59.62	0.88%	-8.2%	7,517.86	5,014.61	27.29	1.47	14.83	3.70%

Index	Value Mn(KD)	Volume (Mn share)
All Share Index	68.92	411.30
Premier Index	53.88	128.96
Main Index	15.03	282.34
NIC 50 Index	61.75	296.21

Market Breadth	UP	Down	No Chg
All Share Index	54	59	60
Premier Index	10	6	4
Main Index	44	53	56
NIC 50 Index	19	23	8

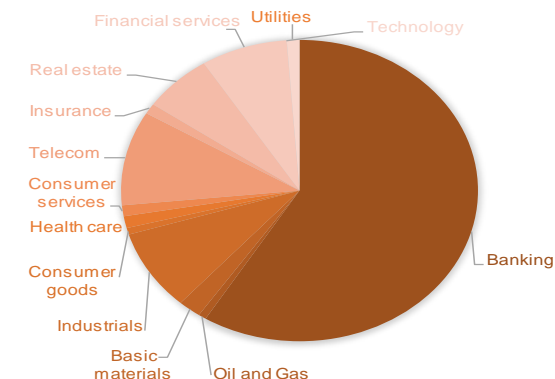
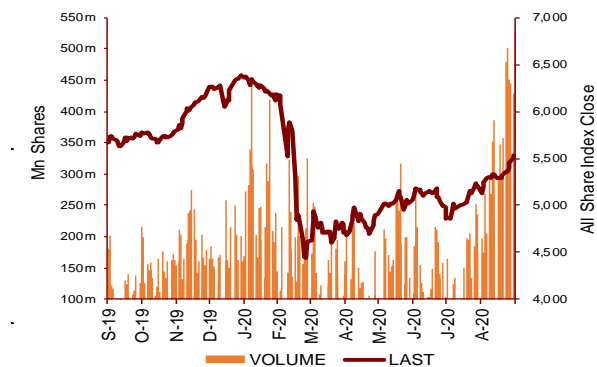
Today's Top 5 Gainer %	Close KD	Value KD	DTD (%)
Inovent BSC Public	0.076	264,106	9.00%
Sanam Real Estate	0.031	0	8.77%
Al Massaleh Real Estate	0.035	4	6.36%
Kuwait National Cinema	0.725	2,405	5.84%
Kuwait Investment	0.127	492,639	5.83%

Today's Top 5 Loser %	Close KD	Value KD	DTD (%)
Hilal Cement	0.104	799	-4.59%
Al Manar Financing and Le	0.047	4,700	-4.08%
IFA Hotels and Resorts	0.024	826,923	-3.94%
Kuwait Syrian Holding Co	0.026	1,275	-3.77%
Ajial Real Estate Entertainr	0.144	8,821	-3.36%

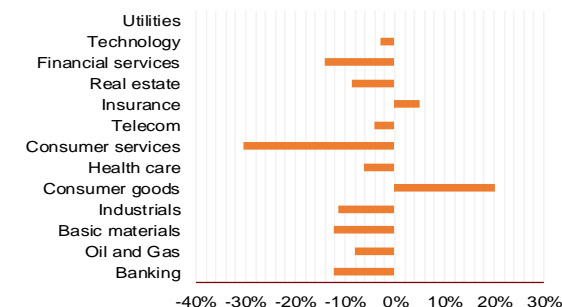
Today's Top 5 by Value	Close KD	DTD Chg	Trade Val Mn(KD)
Kuwait Finance House	0.682	2.40%	15.63
National Bank of Kuwait	0.890	1.14%	6.94
Ahli United Bank BSC	0.244	1.67%	5.35
Agility Public Warehousing	0.671	0.60%	4.17
Gulf Bank	0.225	0.00%	3.91

Top 5 by Volume	Close KD	DTD Chg	Trade Vol Mn(Shrs)
Investors Holding Group	0.017	3.07%	54.62
Aayan Leasing and Investrn	0.089	1.48%	34.01
IFA Hotels and Resorts	0.024	-3.94%	33.63
Sokouk Holding	0.029	3.94%	30.47
Kuwait Finance House	0.682	2.40%	23.20

Sector	Close	DTD Chg Net	DTD (%)	YTD (%)	52W High	52W Low	MKT CAP Bn (KD)	PBV (X)	PE (X)	DY (%)
Banking	1,304.90	15.590	1.21%	-12.2%	1,536.8	986.4	19.01	1.73	15.85	3.3%
Oil and Gas	1,145.94	4.650	0.41%	-7.9%	1,372.2	985.7	0.23	0.83	26.83	5.3%
Basic materials	797.34	-1.210	-0.15%	-12.1%	992.5	561.7	0.67	0.96	14.66	7.5%
Industrials	821.81	0.360	0.04%	-11.2%	937.5	602.9	2.80	0.89	13.36	5.0%
Consumer goods	766.20	2.670	0.35%	20.3%	810.7	548.6	0.23	1.52	92.86	2.2%
Health care	829.21	0.000	0.00%	-6.3%	921.9	815.0	0.41	4.19	48.62	1.0%
Consumer services	746.46	9.830	1.33%	-30.5%	1,083.1	674.8	0.38	0.85	35.85	4.7%
Telecom	1,069.69	3.600	0.34%	-4.2%	1,116.7	802.2	3.28	1.54	11.26	5.6%
Insurance	1,010.55	11.680	1.17%	5.1%	1,024.3	901.0	0.36	0.76	8.58	5.8%
Real estate	968.79	-0.580	-0.06%	-8.6%	1,083.4	763.2	2.04	0.67	23.86	2.4%
Financial services	929.64	3.140	0.34%	-14.1%	1,097.0	801.4	2.54	0.73	16.42	4.1%
Technology	523.80	0.000	0.00%	-3.0%	625.7	371.0	0.01	0.57	-69.84	5.6%
Utilities	878.95	-2.630	-0.30%	0.0%	1,042.1	781.6	0.37	4.80	29.87	0.0%
	5,577.77	44.04	0.80%	-11.3%	6,416.4	4,339.6	32.32	1.29	15.61	3.77%



YTD Sector Performance %



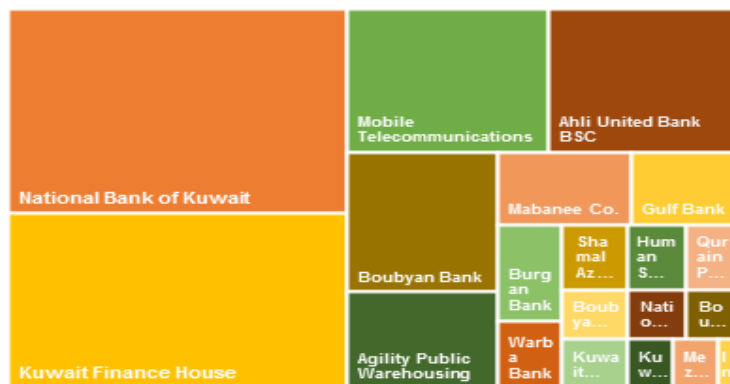
DAILY MARKET COVERAGE REPORT

NIC MENA SECURITIES - RESEARCH AND STUDIES DEP

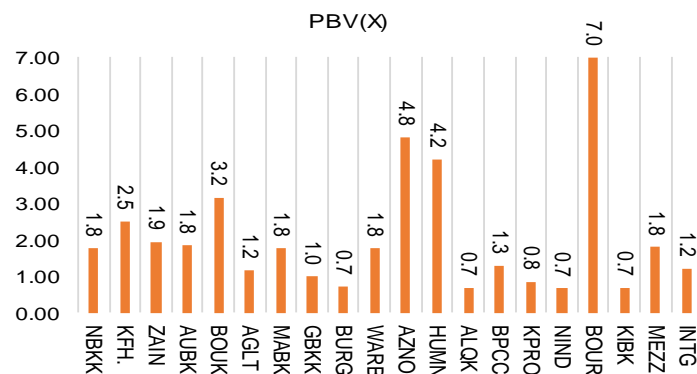


Premier Market	Price			Valuation Multiples			MKT Cap	Price Performance		Trading Indicators		ROE	ROA	52 Week (KD)	
	Close (KD)	Day Δ	Day % Δ	PBV(X)	PE(X)	DY%	Mn KD	MTD(%)	YTD (%)	Value (Mn KD)	(Mn Shrs)	(%)	(%)	High	Low
National Bank of Kuwait	0.890	0.010	1.14%	1.76	15.06	3.5%	6,044	3%	-13%	6.94	7.82	11.7%	1.4%	1.062	0.654
Kuwait Finance House	0.682	0.016	2.40%	2.51	20.62	2.4%	5,176	9%	-8%	15.63	23.20	12.2%	1.3%	0.761	0.473
Mobile Telecommunications	0.585	0.002	0.34%	1.95	11.67	5.3%	2,531	-1%	-2%	3.26	5.60	16.7%	4.6%	0.604	0.407
Ahli United Bank BSC	0.244	0.004	1.67%	1.84	10.75	5.0%	2,355	4%	-17%	5.35	22.09	17.1%	1.8%	0.311	0.160
Boubyan Bank	0.601	0.001	0.17%	3.16	29.05	1.1%	1,820	4%	-2%	0.77	1.28	10.9%	1.2%	0.638	0.380
Agility Public Warehousing	0.671	0.004	0.60%	1.17	14.80	2.7%	1,284	8%	-6%	4.17	6.24	7.9%	4.2%	0.748	0.357
Mabane Co.	0.758	-0.002	-0.26%	1.77	14.85	1.4%	838	19%	-11%	1.28	1.71	11.9%	5.8%	0.877	0.434
Gulf Bank	0.225	0.000	0.00%	0.98	10.27	4.4%	653	6%	-26%	3.91	17.46	9.6%	1.0%	0.317	0.180
Burgan Bank	0.207	0.000	0.00%	0.72	6.41	5.5%	542	5%	-32%	0.66	3.19	11.3%	1.2%	0.324	0.175
Warba Bank	0.243	0.000	0.00%	1.76	23.14	0.0%	383	22%	-7%	1.55	6.44	7.6%	0.5%	0.279	0.164
Shamal Az-Zour Al-Oula Power & Water	0.334	-0.001	-0.30%	4.80	29.87	0.0%	367	4%	0%	1.68	5.05	16.1%	2.3%	0.500	0.297
Human Soft Holding	2.775	-0.044	-1.56%	4.20	9.41	6.6%	338	10%	-8%	1.86	0.68	44.6%	30.3%	3.470	1.944
Qurain Petrochemical Industries	0.281	-0.001	-0.35%	0.68	10.17	5.5%	287	-1%	-9%	0.19	0.66	6.7%	3.6%	0.323	0.163
Boubyan Petrochemical	0.569	0.000	0.00%	1.28	24.27	9.1%	287	6%	-15%	0.15	0.27	5.3%	2.1%	0.800	0.395
Kuwait Projects Company Holding	0.158	0.003	1.94%	0.85	9.54	5.9%	286	6%	-27%	0.60	3.84	8.9%	0.3%	0.225	0.147
National Industries Group Holding	0.175	-0.002	-1.13%	0.66	5.39	6.2%	250	12%	-27%	1.33	7.58	12.3%	3.7%	0.247	0.121
Boursa Kuwait Securities Co	1.116	0.010	0.90%	6.98	23.36	0.0%	224	0%	0%	1.63	1.45	29.9%	26.5%	1.210	0.990
Kuwait International Bank	0.190	0.001	0.53%	0.69	11.30	5.3%	194	10%	-27%	2.62	13.84	6.1%	0.6%	0.270	0.162
Mezzan Holding	0.622	0.004	0.65%	1.79	33.61	2.7%	189	-4%	24%	0.22	0.35	5.3%	2.2%	0.665	0.428
Integrated Holding	0.380	-0.003	-0.78%	1.22	10.58	10.5%	84	9%	-31%	0.08	0.22	11.5%	8.5%	0.600	0.342
Total	62.52	1.02%	1.74	14.50	3.46%	24,132	5.4%	-11.6%	53.88	128.96	12.01%	1.56%			

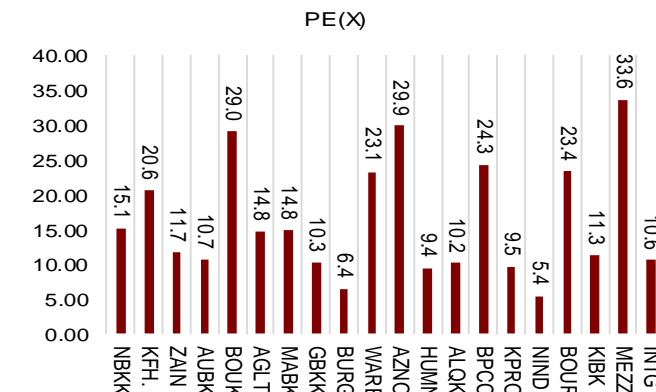
Market Capitalization



Price to Book Value

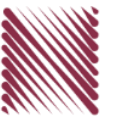


Price to Earning Value

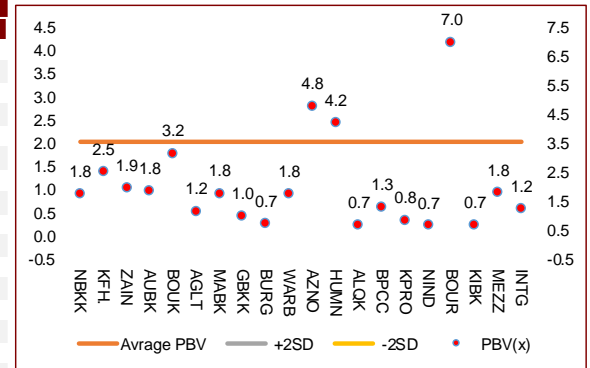


DAILY MARKET COVERAGE REPORT

NIC MENA SECURITIES - RESEARCH AND STUDIES DEP



Premier Market	Price			Valuation Multiples			MKT Cap	Price Performance		ROE	ROA
Company	Close (KD)	Day Δ	Day % Δ	PBV(X)	PE(X)	DY%	Mn KD	MTD(%)	YTD (%)	(%)	(%)
National Bank of Kuwait	0.890	0.010	1.14%	1.76	15.1	3.5%	6,044	3.0%	-13.1%	11.7%	1.4%
Kuwait Finance House	0.682	0.016	2.40%	2.51	20.6	2.4%	5,176	8.8%	-7.6%	12.2%	1.3%
Mobile Telecommunications	0.585	0.002	0.34%	1.95	11.7	5.3%	2,531	-0.8%	-2.5%	16.7%	4.6%
Ahli United Bank BSC	0.244	0.004	1.67%	1.84	10.7	5.0%	2,355	4.3%	-17.2%	17.1%	1.8%
Boubyan Bank	0.601	0.001	0.17%	3.16	29.0	1.1%	1,820	4.0%	-1.6%	10.9%	1.2%
Agility Public Warehousing	0.671	0.004	0.60%	1.17	14.8	2.7%	1,284	7.7%	-5.5%	7.9%	4.2%
Mabane Co.	0.758	-0.002	-0.26%	1.77	14.8	1.4%	838	19.0%	-11.2%	11.9%	5.8%
Gulf Bank	0.225	0.000	0.00%	0.98	10.3	4.4%	653	5.6%	-25.7%	9.6%	1.0%
Burgan Bank	0.207	0.000	0.00%	0.72	6.4	5.5%	542	5.1%	-31.6%	11.3%	1.2%
Warba Bank	0.243	0.000	0.00%	1.76	23.1	0.0%	383	22.1%	-7.2%	7.6%	0.5%
Shamal Az-Zour Al-Oula Power & Water	0.334	-0.001	-0.30%	4.80	29.9	0.0%	367	4.4%	0.0%	16.1%	2.3%
Human Soft Holding	2.775	-0.044	-1.56%	4.20	9.4	6.6%	338	10.2%	-7.5%	44.6%	30.3%
Qurain Petrochemical Industries	0.281	-0.001	-0.35%	0.68	10.2	5.5%	287	-1.4%	-9.4%	6.7%	3.6%
Boubyan Petrochemical	0.569	0.000	0.00%	1.28	24.3	9.1%	287	6.3%	-14.7%	5.3%	2.1%
Kuwait Projects Company Holding	0.158	0.003	1.94%	0.85	9.5	5.9%	286	6.0%	-26.9%	8.9%	0.3%
National Industries Group Holding	0.175	-0.002	-1.13%	0.66	5.4	6.2%	250	12.2%	-27.4%	12.3%	3.7%
Boursa Kuwait Securities Co	1.116	0.010	0.90%	6.98	23.4	0.0%	224	0.0%	0.0%	29.9%	26.5%
Kuwait International Bank	0.190	0.001	0.53%	0.69	11.3	5.3%	194	10.5%	-27.2%	6.1%	0.6%
Mezzan Holding	0.622	0.004	0.65%	1.79	33.6	2.7%	189	-4.3%	24.4%	5.3%	2.2%
Integrated Holding	0.380	-0.003	-0.78%	1.22	10.6	10.5%	84	8.6%	-31.0%	11.5%	8.5%
Total		62.52	1.02%	1.74	14.50	3.46%	24,132	5.4%	-11.6%	12.01%	1.56%



Premier Market	Price			Moving Average		RSI	MKT Cap	Price Performance		52 Week (KD)	
Description	Close (KD)	Day Δ	Day % Δ	50 Day	200 Day	14 Day	Mn KD	MTD(%)	YTD (%)	High	Low
Premier Index	6,179	62.52	1.02%	5,681	5,893	79	24,132	5.4%	-11.6%	7,172	4,499

Top 5 Performrs (Today's Price Change)

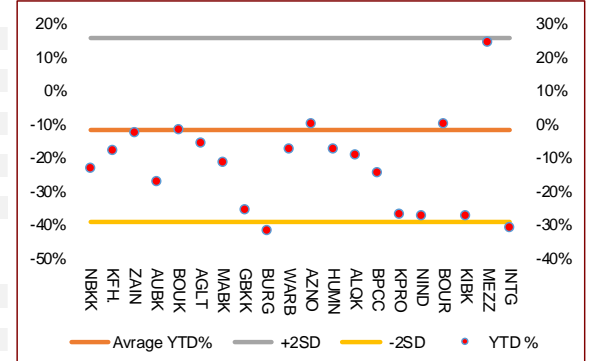
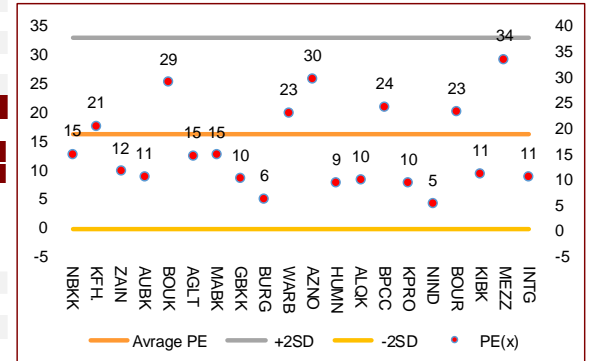
Kuwait Finance House	0.682	0.016	2.40%	0.610	0.638	84	5,176	8.8%	-7.6%	0.761	0.473
Kuwait Projects Company Holding	0.158	0.003	1.94%	0.152	0.179	62	286	6.0%	-26.9%	0.225	0.147
Ahli United Bank BSC	0.244	0.004	1.67%	0.209	0.228	58	2,355	4.3%	-17.2%	0.311	0.160
National Bank of Kuwait	0.890	0.010	1.14%	0.826	0.851	63	6,044	3.0%	-13.1%	1.062	0.654
Boursa Kuwait Securities Co	1.116	0.010	0.90%	0.127	0.032	68	224	0.0%	0.0%	1.210	0.990

Middle Performrs (Today's Price Change)

Mezzan Holding	0.622	0.004	0.65%	0.611	0.554	26	189	-4.3%	24.4%	0.665	0.428
Agility Public Warehousing	0.671	0.004	0.60%	0.636	0.613	81	1,284	7.7%	-5.5%	0.748	0.357
Kuwait International Bank	0.190	0.001	0.53%	0.173	0.206	83	194	10.5%	-27.2%	0.270	0.162
Mobile Telecommunications	0.585	0.002	0.34%	0.567	0.548	42	2,531	-0.8%	-2.5%	0.604	0.407
Boubyan Bank	0.601	0.001	0.17%	0.557	0.542	72	1,820	4.0%	-1.6%	0.638	0.380
Gulf Bank	0.225	0.000	0.00%	0.207	0.239	76	653	5.6%	-25.7%	0.317	0.180
Burgan Bank	0.207	0.000	0.00%	0.193	0.233	83	542	5.1%	-31.6%	0.324	0.175
Warba Bank	0.243	0.000	0.00%	0.206	0.221	76	383	22.1%	-7.2%	0.279	0.164
Boubyan Petrochemical	0.569	0.000	0.00%	0.561	0.579	71	287	6.3%	-14.7%	0.800	0.395
Mabane Co.	0.758	-0.002	-0.26%	0.100	0.100	92	838	19.0%	-11.2%	1.210	0.996

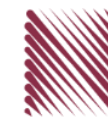
Bottom 5 Performrs (Today's Price Change)

Human Soft Holding	2.775	-0.044	-1.56%	2.677	2.807	75	338	10.2%	-7.5%	3.470	1.944
National Industries Group Holding	0.175	-0.002	-1.13%	0.161	0.187	95	250	12.2%	-27.4%	0.247	0.121
Integrated Holding	0.380	-0.003	-0.78%	0.376	0.452	75	84	8.6%	-31.0%	0.600	0.342
Qurain Petrochemical Industries	0.281	-0.001	-0.35%	0.283	0.268	45	287	-1.4%	-9.4%	0.323	0.163
Shamal Az-Zour Al-Oula Power & Water	0.334	-0.001	-0.30%	0.172	0.043	67	367	4.4%	0.0%	0.500	0.297



DAILY MARKET COVERAGE REPORT

NIC MENA SECURITIES - RESEARCH AND STUDIES DEP



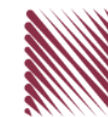
Banking Sector	Price			Valuation Multiples			MKT Cap	Price Performance		Trading Indicators		ROE	ROA	52 Week (KD)	
	Company	Close (KD)	Day Δ	Day % Δ	PBV(X)	PE(X)		DY%	Mn KD	MTD(%)	YTD (%)			Value (Mn KD)	(Mn Shrs)
National Bank of Kuwait	0.890	0.010	1.14%	1.76	15.06	3.5%	6,044	3%	-13%	6.94	7.82	11.7%	1.4%	1.062	0.654
Kuwait Finance House	0.682	0.016	2.40%	2.51	20.62	2.4%	5,176	9%	-8%	15.63	23.20	12.2%	1.3%	0.761	0.473
Ahli United Bank BSC	0.244	0.004	1.67%	1.84	10.75	5.0%	2,355	4%	-17%	5.35	22.09	17.1%	1.8%	0.311	0.160
Boubyan Bank	0.601	0.001	0.17%	3.16	29.05	1.1%	1,820	4%	-2%	0.77	1.28	10.9%	1.2%	0.638	0.380
Commercial Bank of Kuwait	0.500	0.000	0.00%	1.32	0.00	3.7%	965	0%	-5%	0.01	0.01	0.0%	0.0%	0.555	0.465
Gulf Bank	0.225	0.000	0.00%	0.98	10.27	4.4%	653	6%	-26%	3.91	17.46	9.6%	1.0%	0.317	0.180
Ahli United Bank	0.289	-0.001	-0.34%	1.24	10.24	4.7%	564	12%	-11%	0.09	0.30	12.1%	1.3%	0.330	0.225
Burgan Bank	0.207	0.000	0.00%	0.72	6.41	5.5%	542	5%	-32%	0.66	3.19	11.3%	1.2%	0.324	0.175
Warba Bank	0.243	0.000	0.00%	1.76	23.14	0.0%	383	22%	-7%	1.55	6.44	7.6%	0.5%	0.279	0.164
Al Ahli Bank of Kuwait	0.198	-0.002	-1.00%	0.57	11.09	7.1%	318	16%	-23%	1.19	6.03	5.1%	0.6%	0.310	0.156
Kuwait International Bank	0.190	0.001	0.53%	0.69	11.30	5.3%	194	10%	-27%	2.62	13.84	6.1%	0.6%	0.270	0.162
Total Banking Sector - 11 Companies				1.73	15.85	3.3%	19,014			38.71	101.64	10.90%	1.21%		

Basic materials	Price			Valuation Multiples			MKT Cap	Price Performance		Trading Indicators		ROE	ROA	52 Week (KD)	
	Company	Close (KD)	Day Δ	Day % Δ	PBV(X)	PE(X)		DY%	Mn KD	MTD(%)	YTD (%)			Value (Mn KD)	(Mn Shrs)
Qurain Petrochemical Industries	0.281	-0.001	-0.35%	0.68	10.17	5.5%	287	-1%	-9%	0.19	0.66	6.7%	3.6%	0.323	0.163
Boubyan Petrochemical	0.569	0.000	0.00%	1.28	24.27	9.1%	287	6%	-15%	0.15	0.27	5.3%	2.1%	0.800	0.395
Al Kout Industrial Projects	0.769	0.000	0.00%	2.50	16.21	6.5%	78	0%	-10%	0.00	0.00	15.4%	11.3%	0.850	0.769
Kuwait Foundry	0.260	0.000	0.00%	0.87	21.01	20.5%	19	9%	-22%	0.00	0.02	4.1%	3.8%	0.510	0.192
Total Basic materials - 4 Companies				0.96	14.66	7.5%	670			0.34	0.95	6.57%	5.07%		

Consumer goods	Price			Valuation Multiples			MKT Cap	Price Performance		Trading Indicators		ROE	ROA	52 Week (KD)	
	Company	Close (KD)	Day Δ	Day % Δ	PBV(X)	PE(X)		DY%	Mn KD	MTD(%)	YTD (%)			Value (Mn KD)	(Mn Shrs)
Mezzan Holding	0.622	0.004	0.65%	1.79	33.61	2.7%	189	-4%	24%	0.22	0.35	5.3%	2.2%	0.665	0.428
Livestock Transport and Trading	0.184	-0.002	-1.08%	0.96	32.80	0.1%	38	-1%	5%	0.01	0.05	2.9%	2.0%	0.200	0.152
Danah Al Safat Foodstuff	0.012	0.000	0.00%	0.25	(0.30)	0.1%	1	0%	-25%	0.00	0.00	-84.8%	-43.2%	0.029	0.010
Total Basic materials - 3 Companies				1.52	92.86	2.2%	229			0.22	0.39	1.64%	0.90%		

DAILY MARKET COVERAGE REPORT

NIC MENA SECURITIES - RESEARCH AND STUDIES DEP

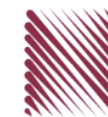


Consumer services	Price			Valuation Multiples			MKT Cap	Price Performance		Trading Indicators		ROE	ROA	52 Week (KD)	
Company	Close (KD)	Day Δ	Day % Δ	PBV(X)	PE(X)	DY%	Mn KD	MTD(%)	YTD (%)	Value (Mn KD)	(Mn Shrs)	(%)	(%)	High	Low
Jazeera Airways	0.574	0.003	0.53%	2.85	7.68	6.1%	115	2%	-48%	0.12	0.21	37.1%	9.0%	1.110	0.372
Kuwait National Cinema	0.725	0.040	5.84%	0.83	7.84	6.7%	67	8%	-31%	0.00	0.00	10.6%	7.2%	1.050	0.600
Oula Fuel Marketing	0.110	0.000	0.00%	0.66	11.51	5.4%	45	-1%	-13%	0.03	0.27	5.7%	3.2%	0.134	0.095
Al Soor Fuel Marketing	0.111	0.002	1.83%	0.68	12.99	4.5%	45	1%	-11%	0.01	0.13	5.3%	3.7%	0.129	0.096
Sultan Center Food Products	0.057	0.000	-0.70%	0.71	14.29	0.0%	32	3%	9%	0.04	0.72	4.9%	0.7%	0.060	0.036
IFA Hotels and Resorts	0.024	-0.001	-3.94%	0.88	(0.67)	0.0%	15	-3%	-56%	0.83	33.63	-131.5%	-8.1%	0.062	0.021
Jiyad Holding	0.041	0.001	3.24%	0.37	8.26	0.0%	14	27%	6%	0.01	0.18	4.5%	2.8%	0.047	0.029
Kuwait Resorts	0.053	0.000	-0.56%	0.36	9.62	0.0%	10	16%	-9%	0.01	0.11	3.8%	3.2%	0.060	0.038
Alrai Media Group	0.037	0.000	0.00%	0.83	(2.41)	0.0%	9	0%	-2%	0.00	0.00	-34.2%	-20.0%	0.045	0.031
Future Kid Entertainment and Real Estate	0.080	0.004	4.58%	0.46	30.22	14.4%	9	5%	-9%	0.00	0.00	1.5%	0.9%	0.110	0.069
Al Eid Food	0.067	-0.001	-1.03%	0.45	5.36	0.0%	8	21%	2%	0.00	0.01	8.4%	6.1%	0.080	0.038
Kuwait Hotels	0.090	0.000	0.00%	1.26	(5.18)	0.0%	5	3%	-10%	0.00	0.00	-24.4%	-13.2%	0.101	0.069
Palms Agro Production	0.065	0.000	0.00%	0.55	(45.82)	15.3%	3	15%	62%	0.00	0.00	-1.2%	-0.9%	0.065	0.025
Kuwait Cable Vision	0.014	0.000	0.00%	0.52	(11.65)	0.0%	1	0%	0%	0.00	0.00	-4.5%	-3.0%	0.026	0.012
Total Consumer services - 14 Companies				0.85	35.85	4.7%	378			1.05	35.26	2.38%	2.72%		

Financial services	Price			Valuation Multiples			MKT Cap	Price Performance		Trading Indicators		ROE	ROA	52 Week (KD)	
Company	Close (KD)	Day Δ	Day % Δ	PBV(X)	PE(X)	DY%	Mn KD	MTD(%)	YTD (%)	Value (Mn KD)	(Mn Shrs)	(%)	(%)	High	Low
Egypt Kuwait Holding	0.370	0.000	0.00%	2.19	12.49	5.3%	379	-1%	-18%	0.00	0.00	17.6%	7.1%	0.500	0.318
Kuwait Projects Company Holding	0.158	0.003	1.94%	0.85	9.54	5.9%	286	6%	-27%	0.60	3.84	8.9%	0.3%	0.225	0.147
National Industries Group Holding	0.175	-0.002	-1.13%	0.66	5.39	6.2%	250	12%	-27%	1.33	7.58	12.3%	3.7%	0.247	0.121
Boursa Kuwait Securities Co	1.116	0.010	0.90%	6.98	23.36	0.0%	224	0%	0%	1.63	1.45	29.9%	26.5%	1.210	0.990
GFH Financial Group	0.051	0.000	-0.59%	0.55	6.90	5.6%	171	0%	-27%	0.08	1.62	8.0%	1.3%	0.074	0.042
National Investments	0.142	0.003	2.16%	0.63	10.56	5.7%	113	19%	3%	0.39	2.79	5.9%	5.0%	0.158	0.080
Tamdeen Investment	0.310	-0.010	-3.13%	0.38	12.86	3.8%	106	24%	-10%	0.01	0.03	3.0%	2.2%	0.400	0.199
Alimtiq Investment Group	0.095	0.000	-0.21%	0.45	4.97	8.3%	98	11%	-25%	0.24	2.55	9.1%	5.2%	0.137	0.071
Commercial Facilities	0.186	0.003	1.64%	0.58	7.17	9.0%	94	1%	-14%	0.00	0.02	8.0%	4.2%	0.235	0.179
Aayan Leasing and Investment	0.089	0.001	1.48%	1.04	(4.89)	2.0%	71	50%	91%	3.00	34.01	-21.4%	-4.9%	0.102	0.032
Kuwait Investment	0.127	0.007	5.83%	0.55	3.98	7.9%	70	12%	-16%	0.49	4.00	13.9%	6.0%	0.172	0.095
Noor Financial Investment	0.172	0.000	0.00%	1.05	8.41	2.9%	68	6%	45%	0.02	0.11	12.5%	7.5%	0.184	0.076

DAILY MARKET COVERAGE REPORT

NIC MENA SECURITIES - RESEARCH AND STUDIES DEP



Financial services	Price			Valuation Multiples			MKT Cap	Price Performance		Trading Indicators		ROE	ROA	52 Week (KD)		
	Company	Close (KD)	Day Δ	Day % Δ	PBV(X)	PE(X)	DY%	Mn KD	MTD(%)	YTD (%)	Value (Mn KD)	(Mn Shrs)	(%)	(%)	High	Low
Arzan Financial Group for Financing and Invest	0.055	-0.001	-1.43%	0.45	40.13	0.0%	44	-5%	133%	0.60	10.82	1.1%	0.7%	0.064	0.022	
Gulf Investment House	0.100	-0.001	-0.79%	1.12	184.97	0.0%	41	5%	52%	0.06	0.60	0.6%	0.5%	0.108	0.038	
Kuwait Financial Centre	0.082	0.000	-0.48%	0.41	5.66	6.0%	39	2%	-22%	0.04	0.49	7.3%	3.5%	0.121	0.070	
Al Bareeq Holding	0.079	0.000	0.00%	0.83	15.80	0.0%	35	-25%	-21%	0.00	0.00	5.2%	5.0%	0.110	0.079	
Arabi Group Holdings	0.198	0.000	0.00%	1.07	(19.90)	0.0%	33	0%	-28%	0.00	0.00	-5.4%	-0.6%	0.337	0.079	
Kuwait and Middle East Financial Investment	0.118	0.001	0.85%	1.92	47.12	0.0%	31	3%	32%	0.02	0.16	4.1%	3.2%	0.138	0.063	
Umm Al Qaiwain General Investment Co	0.072	-0.001	-1.91%	0.48	13.53	5.1%	26	-20%	7%	0.00	0.05	3.6%	3.3%	0.096	0.052	
Privatization Holding	0.042	0.000	-0.71%	0.31	(38.05)	0.0%	26	1%	-15%	0.01	0.17	-0.8%	-0.5%	0.059	0.037	
Asiya Capital Investments	0.033	0.001	1.54%	0.35	17.01	0.2%	26	6%	-19%	0.00	0.00	2.1%	2.0%	0.041	0.029	
Securities House	0.045	-0.001	-2.16%	0.62	(66.08)	0.0%	25	13%	0%	0.17	3.75	-0.9%	-0.7%	0.050	0.027	
KAMCO Investment	0.072	0.000	0.00%	0.44	8.15	0.0%	25	3%	-20%	0.04	0.51	5.4%	2.3%	0.111	0.060	
Inovent BSC Public	0.076	0.006	9.00%	0.53	10.24	7.7%	23	33%	18%	0.26	3.56	5.2%	2.9%	0.072	0.044	
Coast Investment and Development	0.035	0.000	-0.57%	0.37	34.78	0.0%	20	3%	-13%	0.00	0.09	1.1%	1.0%	0.045	0.026	
First Investment	0.030	-0.001	-1.65%	0.46	(0.41)	0.0%	19	-1%	-13%	0.02	0.71	-113.6%	-62.0%	0.045	0.022	
Al Madar Finance and Investment	0.089	0.001	1.02%	0.81	13.28	0.0%	18	4%	-4%	0.02	0.23	6.1%	5.0%	0.148	0.062	
Bayan Investment	0.046	0.002	4.56%	0.46	(23.72)	0.0%	17	-4%	20%	0.00	0.02	-1.9%	-0.8%	0.053	0.031	
Manazel Holding	0.035	0.000	0.29%	0.76	22.24	0.0%	15	5%	-12%	0.08	2.28	3.4%	0.8%	0.048	0.021	
Al Manar Financing and Leasing	0.047	-0.002	-4.08%	0.43	12.11	1.1%	15	1%	-9%	0.00	0.10	3.5%	2.7%	0.060	0.037	
Kuwait Finance and Investment	0.045	0.000	-0.22%	0.36	20.30	0.0%	14	0%	-9%	0.01	0.14	1.8%	1.2%	0.058	0.038	
National International Holding	0.061	-0.001	-1.77%	0.32	7.33	4.8%	13	0%	-17%	0.00	0.05	4.4%	3.3%	0.081	0.051	
Osoul Investment	0.081	-0.001	-0.98%	0.61	6.78	0.0%	12	-4%	8%	0.01	0.08	9.0%	8.2%	0.121	0.070	
UniCap Investment and Finance	0.047	0.001	1.95%	0.48	(23.53)	0.0%	11	26%	-15%	0.02	0.33	-2.0%	-1.0%	0.057	0.035	
Amar Finance and Leasing	0.056	0.000	0.00%	0.63	46.88	0.0%	11	9%	47%	0.00	0.00	1.3%	1.2%	0.064	0.037	
Gulf North Africa Holding	0.059	0.001	1.03%	0.78	76.01	0.0%	9	6%	-5%	0.00	0.07	1.0%	0.6%	0.062	0.052	
International Financial Advisors	0.031	0.000	0.00%	0.93	(0.42)	2.1%	8	0%	-42%	0.00	0.00	-222.8%	-19.3%	0.060	0.027	
Al Salam Group Holding	0.027	0.000	-0.74%	0.23	201.57	0.0%	7	15%	-9%	0.10	3.76	0.1%	0.1%	0.033	0.018	
Amwal International Investment	0.036	0.000	0.00%	0.66	13.16	0.0%	6	-1%	19%	0.00	0.00	5.0%	2.6%	0.055	0.030	
Credit Rating and Collection	0.032	0.000	0.00%	0.98	(21.53)	0.0%	5	-9%	60%	0.00	0.00	-4.6%	-4.3%	0.035	0.019	
Al Madina for Finance and Investment	0.013	0.000	-0.76%	0.44	(2.44)	0.0%	5	21%	-13%	0.04	2.71	-17.9%	-7.7%	0.019	0.009	
Ekttitab Holding	0.015	0.000	-1.32%	0.36	(10.56)	0.0%	5	14%	-3%	0.01	0.95	-3.4%	-3.0%	0.017	0.010	
Warba Capital Holding	0.047	0.000	-0.21%	0.52	(7.45)	0.0%	5	-6%	-27%	0.00	0.01	-7.0%	-6.2%	0.075	0.042	
National Consumer Holding	0.051	0.000	0.00%	0.56	249.43	0.0%	5	-7%	-8%	0.00	0.00	0.2%	0.2%	0.100	0.010	
Kuwait Syrian Holding Co	0.026	-0.001	-3.77%	0.22	(13.03)	0.0%	4	-4%	-19%	0.00	0.05	-1.7%	-1.1%	0.043	0.022	
Al Deera Holding	0.016	0.000	0.00%	0.70	(9.02)	0.0%	3	0%	-20%	0.00	0.00	-7.7%	-1.7%	0.022	0.011	
Al Mal Investment Company	0.009	0.000	0.00%	0.41	(0.87)	0.0%	3	3%	-6%	0.04	4.42	-47.6%	-23.3%	0.016	0.008	
Gulf Franchising Holding	0.050	0.000	0.00%	0.79	(2.18)	0.0%	2	-14%	-33%	0.00	0.00	-36.2%	-10.8%	0.160	0.001	
Tamkeen Holding	0.005	0.000	0.00%	0.05	(7.18)	0.0%	0	0%	0%	0.00	0.00	-0.7%	-0.7%	0.005	0.005	
Total Financial services - 49 Companies				0.73	16.42	4.1%	2,536				9.36	94.12	4.42%	4.14%		

DAILY MARKET COVERAGE REPORT

NIC MENA SECURITIES - RESEARCH AND STUDIES DEP

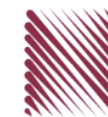


Health care	Price			Valuation Multiples			MKT Cap	Price Performance		Trading Indicators		ROE	ROA	52 Week (KD)	
Company	Close (KD)	Day Δ	Day % Δ	PBV(X)	PE(X)	DY%	Mn KD	MTD(%)	YTD (%)	Value (Mn KD)	(Mn Shrs)	(%)	(%)	High	Low
Al-Maidan Clinic for Oral Health Services	1.220	0.000	0.00%	7.90	47.78	0.6%	305	0%	0%	0.00	0.00	16.5%	10.9%	1.240	1.220
Advanced Technology	0.627	0.000	0.00%	1.63	51.04	2.4%	94	0%	-23%	0.00	0.00	3.2%	0.7%	0.900	0.580
Yiaco Medical	0.707	0.000	0.00%	6.06	52.72	0.0%	12	0%	0%	0.00	0.00	11.5%	0.6%	0.707	0.707
Total Health care - 3 Companies				4.19	48.62	1.0%	411			0.00	0.00	8.61%	4.68%		

Industrials	Price			Valuation Multiples			MKT Cap	Price Performance		Trading Indicators		ROE	ROA	52 Week (KD)	
Company	Close (KD)	Day Δ	Day % Δ	PBV(X)	PE(X)	DY%	Mn KD	MTD(%)	YTD (%)	Value (Mn KD)	(Mn Shrs)	(%)	(%)	High	Low
Agility Public Warehousing	0.671	0.004	0.60%	1.17	14.80	2.7%	1,284	8%	-6%	4.17	6.24	7.9%	4.2%	0.748	0.357
Human Soft Holding	2.775	-0.044	-1.56%	4.20	9.41	6.6%	338	10%	-8%	1.86	0.68	44.6%	30.3%	3.470	1.944
ALAFCO Aviation Lease and Finance	0.167	-0.001	-0.60%	0.50	8.98	6.0%	159	6%	-39%	0.69	4.17	5.5%	1.4%	0.278	0.138
Kuwait Cement	0.207	0.001	0.49%	0.71	36.74	7.2%	148	20%	-15%	0.30	1.45	1.9%	1.3%	0.270	0.144
Gulf Cable and Electrical Industries	0.702	0.012	1.74%	0.84	34.82	3.9%	147	10%	45%	0.75	1.08	2.4%	2.2%	0.742	0.390
Integrated Holding	0.380	-0.003	-0.78%	1.22	10.58	10.5%	84	9%	-31%	0.08	0.22	11.5%	8.5%	0.600	0.342
Kuwait Portland Cement	0.768	-0.007	-0.90%	1.03	10.14	12.8%	77	5%	-22%	0.08	0.10	10.2%	8.2%	1.200	0.683
Educational Holding Group	0.306	-0.001	-0.33%	1.77	9.69	4.9%	75	2%	-30%	0.01	0.02	18.3%	16.7%	0.475	0.228
United Projects for Aviation Services	0.465	0.000	0.00%	0.98	7.96	4.5%	74	0%	-9%	0.00	0.00	12.3%	7.8%	0.512	0.367
Heavy Engineering Industries and Shipbuilding	0.372	-0.002	-0.53%	1.08	5.97	7.9%	67	2%	-8%	0.14	0.37	18.0%	5.9%	0.419	0.298
National Industries	0.156	0.000	0.00%	0.65	12.71	6.3%	55	-5%	-5%	0.00	0.00	5.1%	3.8%	0.173	0.143
ACICO Industries	0.103	-0.001	-0.96%	0.33	13.41	4.8%	34	9%	-23%	0.02	0.17	2.5%	0.6%	0.139	0.081
Kuwait Company for Process Plant Constructi	0.311	-0.002	-0.64%	1.23	6.66	5.8%	33	0%	29%	0.05	0.15	18.5%	7.7%	0.337	0.175
Ras Al Khaimah for White Cement and Constr	0.065	0.000	0.00%	0.51	19.94	8.4%	33	0%	0%	0.00	0.00	2.6%	2.0%	0.080	0.055
Gulf Cement	0.035	-0.001	-1.41%	0.35	(12.77)	11.9%	29	17%	-36%	0.00	0.05	-2.7%	-2.2%	0.060	0.029
Combined Group Contracting	0.170	-0.001	-0.58%	0.59	7.66	12.1%	28	10%	-31%	0.38	2.23	7.7%	1.2%	0.251	0.138
Sharjah Cement and Industrial Development	0.042	0.000	0.00%	0.21	25.32	12.4%	26	0%	0%	0.00	0.00	0.8%	0.6%	0.064	0.042
KGL Logistics	0.027	0.000	0.00%	0.20	4.45	0.1%	21	10%	-27%	0.00	0.00	4.6%	2.9%	0.043	0.023
Shuaiba Industrial	0.130	0.000	0.00%	0.72	40.15	7.6%	13	5%	-16%	0.00	0.00	1.8%	1.4%	0.180	0.122
Kuwait and Gulf Link Transport	0.045	0.000	0.89%	0.19	13.73	0.0%	13	0%	-32%	0.02	0.49	1.4%	0.4%	0.077	0.042
Fujairah Cement Industries	0.035	-0.001	-1.69%	0.14	16.92	12.0%	12	11%	-22%	0.00	0.01	0.8%	0.4%	0.052	0.029
National Cleaning	0.057	0.001	1.79%	0.34	7.63	8.9%	12	10%	-17%	0.03	0.53	4.4%	1.5%	0.088	0.047
Hilal Cement	0.104	-0.005	-4.59%	0.91	(8.55)	14.4%	11	-10%	4%	0.00	0.01	-10.6%	-6.2%	0.126	0.063
Specialities Group Holding	0.064	-0.001	-0.92%	0.35	7.64	0.0%	10	7%	-16%	0.02	0.32	4.5%	3.5%	0.078	0.050
Mubarrad Holding	0.064	0.001	1.91%	0.51	10.31	7.3%	10	15%	-27%	0.10	1.55	4.9%	4.1%	0.089	0.049
National Ranges	0.014	0.000	2.13%	0.26	(1.05)	0.0%	4	-11%	42%	0.02	1.09	-24.9%	-5.3%	0.018	0.007
Metal and Recycling	0.041	0.000	0.00%	0.34	(1.73)	0.0%	4	-6%	-18%	0.00	0.00	-19.7%	-10.1%	0.070	0.020
Salbookh Trading	0.035	0.000	0.00%	0.48	(2.05)	0.0%	4	28%	-30%	0.00	0.00	-23.2%	-15.9%	0.051	0.026
Equipment Holding	0.017	-0.001	-2.94%	0.33	(190.54)	0.0%	2	11%	-25%	0.00	0.04	-0.2%	-0.1%	0.024	0.013
Total Industrials - 29 Companies				0.89	13.36	5.0%	2,804			8.70	20.97	6.67%	5.05%		

DAILY MARKET COVERAGE REPORT

NIC MENA SECURITIES - RESEARCH AND STUDIES DEP



Insurance		Price			Valuation Multiples			MKT Cap	Price Performance		Trading Indicators		ROE	ROA	52 Week (KD)	
Company	Close (KD)	Day Δ	Day % Δ	PBV(X)	PE(X)	DY%	Mn KD	MTD(%)	YTD (%)	Value (Mn KD)	(Mn Shrs)	(%)	(%)	High	Low	
Gulf Insurance Group	0.620	0.005	0.81%	1.06	8.65	6.0%	115	1%	-6%	0.02	0.04	12.3%	1.7%	0.680	0.550	
Al Ahleia Insurance	0.414	-0.001	-0.24%	0.78	8.34	8.1%	85	8%	2%	0.11	0.27	9.4%	3.3%	0.445	0.367	
Kuwait Insurance	0.370	0.015	4.23%	0.61	7.17	6.4%	68	1%	8%	0.00	0.00	8.5%	4.6%	0.387	0.300	
Kuwait Reinsurance	0.211	0.000	0.00%	0.80	9.03	2.1%	43	8%	53%	0.00	0.00	8.9%	3.2%	0.211	0.126	
Bahrain Kuwait Insurance	0.200	0.000	0.00%	0.93	12.87	6.1%	28	0%	0%	0.00	0.00	7.2%	1.1%	0.200	0.200	
Warba Insurance	0.079	0.004	4.80%	0.34	11.16	0.0%	13	0%	30%	0.00	0.04	3.1%	1.0%	0.094	0.051	
First Takaful Insurance	0.040	0.000	0.00%	0.48	5.03	0.0%	4	-1%	4%	0.00	0.00	9.6%	5.9%	0.056	0.031	
Wethaq Takaful Insurance	0.024	0.001	2.14%	0.22	(30.25)	0.0%	3	0%	-4%	0.01	0.36	-0.7%	-0.7%	0.035	0.018	
Total Insurance - 8 Companies				0.76	8.58	5.8%	360			0.15	0.71	8.86%	3.00%			

Oil and Gas		Price			Valuation Multiples			MKT Cap	Price Performance		Trading Indicators		ROE	ROA	52 Week (KD)	
Company	Close (KD)	Day Δ	Day % Δ	PBV(X)	PE(X)	DY%	Mn KD	MTD(%)	YTD (%)	Value (Mn KD)	(Mn Shrs)	(%)	(%)	High	Low	
National Petroleum Services	1.100	0.000	0.00%	2.62	9.38	6.4%	107	10%	-6%	0.00	0.00	27.9%	23.6%	1.389	0.903	
Independent Petroleum Group	0.430	0.000	0.00%	0.79	11.72	7.0%	78	-4%	-11%	0.00	0.00	6.8%	2.2%	0.497	0.375	
Burgan for Well Drilling Trading and Maintenanc	0.080	0.004	5.26%	0.29	8.13	0.0%	18	16%	0%	0.00	0.00	3.6%	1.1%	0.098	0.060	
Energy House Holding	0.021	0.000	0.48%	0.65	(2.88)	0.0%	16	-2%	-14%	0.01	0.76	-22.5%	-17.0%	0.036	0.014	
Gulf Petroleum Investment	0.019	0.000	-1.52%	0.22	(6.25)	0.0%	9	1%	-3%	0.22	11.15	-3.4%	-2.3%	0.023	0.012	
Senergy Holding	0.018	0.000	2.22%	0.37	(0.77)	0.0%	4	14%	-16%	0.00	0.02	-47.9%	-30.4%	0.027	0.014	
Total Oil and Gas - 6 Companies				0.83	26.83	5.3%	231			0.23	11.93	3.10%	2.18%			

Real estate		Price			Valuation Multiples			MKT Cap	Price Performance		Trading Indicators		ROE	ROA	52 Week (KD)	
Company	Close (KD)	Day Δ	Day % Δ	PBV(X)	PE(X)	DY%	Mn KD	MTD(%)	YTD (%)	Value (Mn KD)	(Mn Shrs)	(%)	(%)	High	Low	
Mabane Co.	0.758	-0.002	-0.26%	1.77	14.85	1.4%	838	19%	-11%	1.28	1.71	11.9%	5.8%	0.877	0.434	
Salhia Real Estate	0.391	-0.003	-0.76%	1.18	8.98	5.1%	193	-1%	-6%	0.14	0.36	13.2%	5.8%	0.460	0.328	
Commercial Real Estate	0.103	0.000	0.00%	0.63	12.76	5.6%	186	10%	12%	0.05	0.48	5.0%	2.7%	0.111	0.083	
National Real Estate	0.075	-0.002	-2.23%	0.41	9.82	0.0%	112	6%	-14%	0.68	9.04	4.2%	2.4%	0.090	0.058	
Tamdeen Real Estate	0.265	0.010	3.92%	0.38	12.93	3.8%	107	4%	-19%	0.00	0.02	3.0%	2.2%	0.343	0.241	
Kuwait Real Estate	0.099	-0.001	-0.51%	0.69	12.52	0.4%	88	5%	-7%	0.05	0.47	5.5%	2.2%	0.115	0.070	
United Real Estate	0.051	0.000	0.00%	0.29	(7.59)	0.0%	55	2%	-17%	0.00	0.00	-3.9%	-1.2%	0.063	0.045	
First Dubai for Real Estate Development	0.042	-0.001	-1.65%	0.56	45.84	0.9%	42	10%	18%	0.06	1.52	1.2%	1.0%	0.055	0.027	
Al Mazaya Holding	0.056	0.000	-0.72%	0.44	(3.97)	0.1%	35	9%	-6%	0.06	1.00	-11.0%	-3.8%	0.067	0.047	
Ajial Real Estate Entertainment	0.144	-0.005	-3.36%	0.22	13.92	0.0%	28	9%	-16%	0.01	0.06	1.6%	1.4%	0.213	0.115	
Injazzat Real Estate Development	0.079	0.004	5.33%	0.51	(3.79)	8.7%	26	7%	-1%	0.00	0.01	-13.4%	-7.0%	0.091	0.061	

DAILY MARKET COVERAGE REPORT

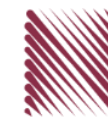
NIC MENA SECURITIES - RESEARCH AND STUDIES DEP



Real estate Company	Price			Valuation Multiples			MKT Cap	Price Performance		Trading Indicators		ROE	ROA	52 Week (KD)	
	Close (KD)	Day Δ	Day % Δ	PBV(X)	PE(X)	DY%	Mn KD	MTD(%)	YTD (%)	Value (Mn KD)	(Mn Shrs)	(%)	(%)	High	Low
Aayan Real Estate	0.060	0.000	-0.66%	0.35	11.74	8.0%	25	17%	-18%	0.01	0.11	3.0%	1.9%	0.080	0.048
Al Argan International Real Estate	0.093	0.000	0.00%	0.27	30.01	5.3%	24	6%	-12%	0.00	0.00	0.9%	0.3%	0.141	0.060
Al-Enmaa Real Estate	0.051	0.000	-0.59%	0.51	13.40	0.0%	23	15%	-20%	0.52	10.22	3.8%	2.4%	0.079	0.037
Munshaat Real Estate Projects	0.070	0.000	0.00%	0.48	25.80	3.0%	23	44%	-3%	0.03	0.38	1.8%	0.7%	0.090	0.045
Ream Real Estate	0.204	0.000	0.00%	1.56	(8.21)	1.1%	22	0%	132%	0.00	0.00	-19.0%	-10.1%	0.204	0.060
Arkan Al Kuwait Real Estate	0.086	0.000	0.00%	0.61	9.26	9.1%	21	2%	-4%	0.00	0.00	6.6%	3.5%	0.100	0.076
Dalqan Real Estate	0.318	0.000	0.00%	2.91	58.98	0.0%	19	0%	0%	0.00	0.00	4.9%	4.9%	0.318	0.318
Kuwait Business Town Real Estate	0.030	0.000	0.00%	0.28	7.76	0.2%	19	27%	-31%	0.15	4.90	3.6%	2.7%	0.046	0.022
Sokouk Holding	0.029	0.001	3.94%	0.36	(4.84)	0.0%	17	24%	-18%	0.87	30.47	-7.4%	-4.7%	0.040	0.022
Tijara and Realestate Investment	0.041	0.000	0.00%	0.38	10.68	4.8%	15	-3%	-19%	0.00	0.00	3.6%	1.9%	0.055	0.034
Al-Arabiya Real Estate	0.026	-0.001	-2.62%	0.23	7.88	2.4%	13	16%	-9%	0.03	1.13	2.9%	1.1%	0.033	0.020
Aqar Real Estate Investments	0.060	0.000	0.00%	0.43	5.01	8.3%	13	-8%	-25%	0.00	0.00	8.7%	7.3%	0.089	0.058
Dar Al Thuraya Real Estate	0.079	0.002	3.01%	0.75	20.77	0.0%	12	-44%	2%	0.01	0.08	3.6%	3.6%	0.190	0.040
Mashaer Holding	0.060	0.000	-0.17%	0.46	6.45	0.0%	11	10%	-23%	0.00	0.07	7.1%	5.0%	0.086	0.048
Investors Holding Group	0.017	0.001	3.07%	0.85	(0.80)	0.0%	10	25%	110%	0.91	54.62	-106.5%	-57.2%	0.032	0.007
Osos Holding Group	0.090	0.000	0.11%	0.72	6.79	10.5%	9	-5%	-10%	0.00	0.01	10.5%	7.0%	0.118	0.083
Al Massaleh Real Estate	0.035	0.002	6.36%	0.39	(4.89)	0.0%	8	21%	-5%	0.00	0.00	-8.1%	-1.9%	0.040	0.026
Abyaar Real Estate Development	0.007	0.000	1.39%	0.21	(0.51)	0.0%	8	0%	-6%	0.02	2.63	-40.9%	-12.4%	0.014	0.005
Kuwait Remal Real Estate	0.022	0.001	2.35%	0.33	(2.99)	0.0%	7	50%	-11%	0.02	0.89	-11.0%	-3.9%	0.027	0.013
Kuwait Real Estate Holding	0.026	0.000	1.55%	0.04	0.70	6.8%	5	3%	-9%	0.00	0.00	5.5%	2.2%	0.034	0.022
Taameer Real Estate Investment	0.020	0.000	0.51%	0.29	(4.17)	0.0%	5	5%	-25%	0.07	3.52	-7.0%	-4.5%	0.034	0.013
Real Estate Trade Centers	0.031	0.000	0.00%	0.17	176.55	0.0%	4	22%	33%	0.00	0.00	0.1%	0.1%	0.050	0.018
Mena Real Estate	0.029	0.001	2.50%	0.20	(63.96)	0.0%	4	18%	-30%	0.03	1.04	-0.3%	-0.2%	0.043	0.021
Sanam Real Estate	0.031	0.003	8.77%	0.39	41.98	0.0%	4	-5%	-29%	0.00	0.00	0.9%	0.9%	0.043	0.027
Al Masaken International Real Estate Developi	0.031	0.000	0.00%	0.35	37.93	0.5%	3	0%	-29%	0.00	0.00	0.9%	0.4%	0.074	0.026
Ajwan Gulf Real Estate	0.011	0.000	0.00%	0.19	(7.68)	0.0%	2	0%	-29%	0.00	0.00	-2.5%	-2.2%	0.016	0.009
Effect Real Estate	0.021	0.000	0.00%	0.29	(8.85)	4.9%	2	0%	0%	0.00	0.00	-3.3%	-3.2%	0.021	0.021
Al Mudon International Real Estate	0.016	0.000	0.00%	0.12	(8.22)	0.0%	2	0%	-35%	0.00	0.00	-1.5%	-1.4%	0.029	0.015
Total Real estate - 39 Companies				0.67	23.86	2.4%	2,038			4.99	124.73	2.79%	2.96%		

DAILY MARKET COVERAGE REPORT

NIC MENA SECURITIES - RESEARCH AND STUDIES DEP



Technology	Price			Valuation Multiples			MKT Cap	Price Performance		Trading Indicators		ROE	ROA	52 Week (KD)	
Company	Close (KD)	Day Δ	Day % Δ	PBV(X)	PE(X)	DY%	Mn KD	MTD(%)	YTD (%)	Value (Mn KD)	(Mn Shrs)	(%)	(%)	High	Low
Automated Systems	0.072	0.000	0.00%	0.57	(69.84)	5.6%	7	1%	-3%	0.01	0.19	-0.8%	-0.7%	0.086	0.051
Total Technology - 1 Companies				0.57	(69.84)	5.6%	7			0.01	0.19	-0.81%	-0.73%		

Telecom	Price			Valuation Multiples			MKT Cap	Price Performance		Trading Indicators		ROE	ROA	52 Week (KD)	
Company	Close (KD)	Day Δ	Day % Δ	PBV(X)	PE(X)	DY%	Mn KD	MTD(%)	YTD (%)	Value (Mn KD)	(Mn Shrs)	(%)	(%)	High	Low
Mobile Telecommunications	0.585	0.002	0.34%	1.95	11.67	5.3%	2,531	-1%	-2%	3.26	5.60	16.7%	4.6%	0.604	0.407
Kuwait Telecommunications	0.845	0.005	0.60%	1.96	9.68	4.1%	422	0%	7%	0.03	0.04	20.2%	11.1%	0.870	0.680
National Mobile Telecommunications	0.615	0.000	0.00%	0.54	10.23	10.5%	308	6%	-26%	0.05	0.09	5.3%	2.4%	0.835	0.550
AAN Digital Services	0.012	0.000	-0.82%	0.36	39.47	0.0%	10	18%	-9%	0.12	9.62	0.9%	0.7%	0.021	0.009
Hayat Communications	0.064	0.000	-0.16%	0.55	27.07	0.0%	6	-22%	-15%	0.00	0.00	2.0%	0.8%	0.098	0.030
Telecom - 5 Companies				1.54	11.26	5.6%	3,278			3.47	15.35	13.70%	7.86%		

Utilities	Price			Valuation Multiples			MKT Cap	Price Performance		Trading Indicators		ROE	ROA	52 Week (KD)	
Company	Close (KD)	Day Δ	Day % Δ	PBV(X)	PE(X)	DY%	Mn KD	MTD(%)	YTD (%)	Value (Mn KD)	(Mn Shrs)	(%)	(%)	High	Low
Shamal Az-Zour Al-Oula Power & Water	0.334	-0.001	-0.30%	4.80	29.87	0.0%	367	4%	0%	1.68	5.05	16.1%	2.3%	0.500	0.297
Total Utilities - 1 Companies				4.80	29.87	0.0%	367			1.68	5.05	16.06%	2.26%		

Total Market 173 Companies				1.29	15.61	3.77%	32,324			68.92	411.30	8.26%	2.76%		
-----------------------------------	--	--	--	-------------	--------------	--------------	---------------	--	--	--------------	---------------	--------------	--------------	--	--

End of Report

The information contained in this document is proprietary to NIC and is for use only by the persons to whom it is issued. This document is confidential and may not be distributed either in part or in whole without the express agreement of NIC. It is intended solely for the use of the individual or entity to whom it is addressed and others authorized to receive it.

Note : ROE and ROA is calculated based on LTM net profit & shareholders' equity and LTM Operating Profits & Total Assets

Sources : National Investments Company Research and Studies Departments



شركة الاستثمار الوطنية
NATIONAL INVESTMENTS COMPANY

Sharq, Al Mutanabi Street, Khaleejia Tower | P.O. Box 25667, Safat 13117, Kuwait

T.: +965 2226 6666 | Fax: +965 2226 6793 | www.nic.com.kw