

شركة الاستثمارات الوطنية  
NATIONAL INVESTMENTS COMPANY

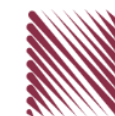
**Bursa Kuwait – Daily Market Report**  
**MENA Securities – Research & Studies Dep.**

**10 May 2021**

---

# DAILY MARKET COVERAGE REPORT

NIC MENA SECURITIES - RESEARCH AND STUDIES DEP



Index	Close	DTD Chg Net	DTD (%)	YTD (%)	52W High	52W Low	MKT CAP Bn (KD)	PBV (X)	PE (X)	DY (%)
All Share Index	6,259.86	-8.24	-0.13%	12.87%	6,279.24	4,668.63	36.39	1.46	17.36	3.34%
Premier Index	6,780.44	-13.35	-0.20%	12.05%	6,815.03	4,983.09	27.37	1.84	15.88	3.16%
Main Index	5,252.91	3.45	0.07%	15.39%	5,256.25	4,050.18	9.02	0.90	24.18	3.86%
NIC 50 Index	7,608.55	0.00	0.00%	13.77%	7,608.55	5,577.60	30.41	1.71	16.82	3.20%

Index	Value Mn(KD)	Volume (Mn share)
All Share Index	55.91	489.72
Premier Index	24.59	72.02
Main Index	31.32	417.70
NIC 50 Index	43.51	287.45

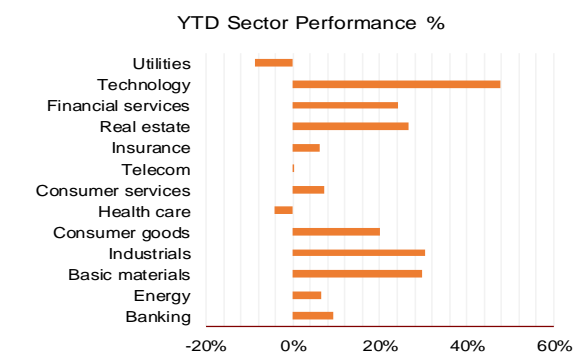
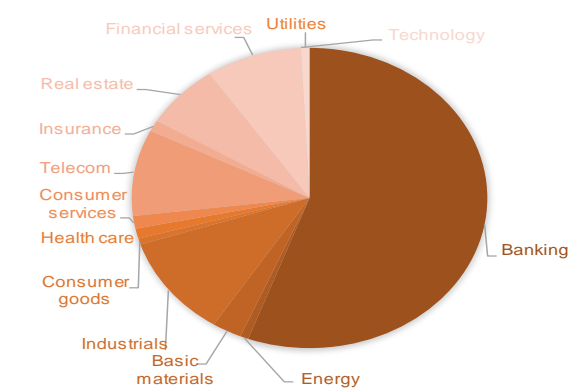
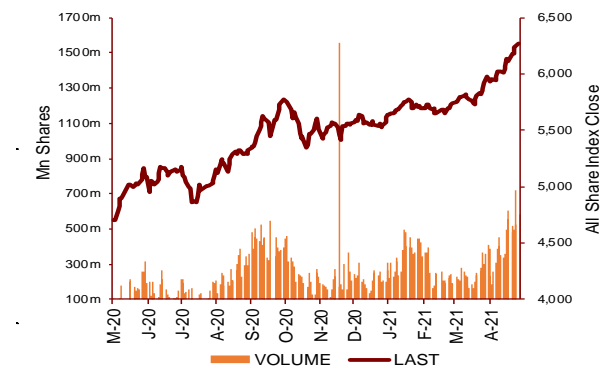
Market Breadth	UP ↑	Down ↓	No Chg ↔
All Share Index	57	68	40
Premier Index	8	12	5
Main Index	49	56	35
NIC 50 Index	20	23	7

Today's Top 5 Gainer %	Close KD	Value KD	DTD (%)
Amar Finance and Leasing	0.070	88,786	26.21%
Investors Holding Group	0.017	1,512,073	13.73%
United Projects for Aviation S	0.312	147,151	11.03%
Privatization Holding	0.052	4,388,446	10.43%
National Consumer Holding	0.067	13,977	10.00%

Today's Top 5 Loser %	Close KD	Value KD	DTD (%)
Munshaat Real Estate Proj	0.096	2,027	-17.50%
Kuwait Real Estate Holding	0.041	92,437	-12.79%
Kuwait Reinsurance	0.333	1,094	-10.00%
Aayan Real Estate	0.105	880,672	-7.89%
United Real Estate	0.065	46,416	-5.95%

Today's Top 5 by Value	Close KD	Trade Val Mn(KD)	DTD (%)
Aayan Leasing and Investment	0.190	6.19	0.53%
Ahli United Bank BSC	0.221	4.47	-0.90%
Privatization Holding	0.052	4.39	10.43%
National Industries Group Hold	0.225	2.96	1.81%
National Bank of Kuwait	0.829	2.61	0.12%

Top 5 by Volume	Close KD	Trade Vol Mn(Shrs)	DTD (%)
Privatization Holding	0.052	89.98	10.43%
Investors Holding Group	0.017	87.60	13.73%
Aayan Leasing and Investm	0.190	32.22	0.53%
Ahli United Bank BSC	0.221	20.10	-0.90%
Gulf Petroleum Investment	0.026	16.54	-2.95%



Sector	Close	DTD Chg Net	DTD (%)	YTD (%)	52W High	52W Low	MKT CAP Bn (KD)	PBV (X)	PE (X)	DY (%)
Banking	1,381.09	-2.530	-0.18%	9.4%	1,385.4	1,045.2	20.23	1.84	16.86	3.1%
Energy	1,361.64	11.220	0.83%	6.6%	1,400.3	1,005.2	0.27	0.99	31.87	4.4%
Basic materials	1,164.34	-4.130	-0.35%	29.6%	1,213.2	661.3	0.98	1.41	21.40	5.2%
Industrials	1,162.64	-1.530	-0.13%	30.5%	1,228.3	695.1	3.98	1.30	18.76	3.4%
Consumer goods	981.33	-7.440	-0.75%	19.9%	997.4	674.8	0.24	1.63	34.95	2.1%
Health care	792.94	0.730	0.09%	-4.1%	840.7	790.8	0.39	4.00	46.49	1.0%
Consumer services	800.39	0.000	0.00%	7.2%	810.7	688.7	0.49	1.15	35.00	3.6%
Telecom	1,104.77	2.840	0.26%	0.2%	1,179.6	947.4	3.38	1.59	11.63	5.5%
Insurance	1,226.19	-11.930	-0.96%	6.1%	1,398.2	929.8	0.43	0.92	10.36	4.8%
Real estate	1,205.53	-6.590	-0.54%	26.5%	1,213.8	801.5	2.52	0.84	24.84	1.9%
Financial services	1,155.43	3.350	0.29%	24.3%	1,158.4	818.8	3.17	0.91	20.58	3.3%
Technology	742.05	21.820	3.03%	47.6%	800.3	404.5	0.01	0.80	-98.94	3.9%
Utilities	665.79	-2.630	-0.39%	-8.7%	1,042.1	644.7	0.28	3.63	22.62	0.0%
	6,259.86	-8.24	-0.13%	12.9%	6,279.2	4,668.6	36.39	1.46	17.36	3.34%

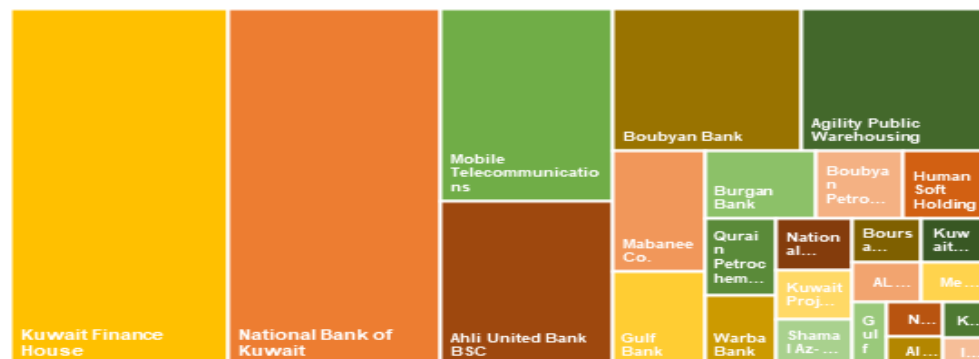
# DAILY MARKET COVERAGE REPORT

## NIC MENA SECURITIES - RESEARCH AND STUDIES DEP

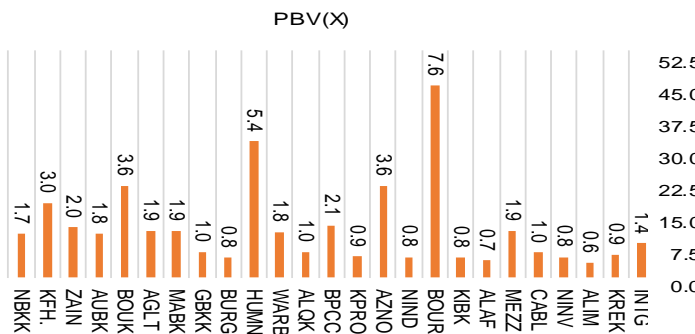


Premier Market	Price			Valuation Multiples			MKT Cap	Price Performance		Trading Indicators		ROE	ROA	52 Week (KD)		MKT Cap
	Close (KD)	Day Δ	Day % Δ	PBV(X)	PE(X)	DY%	Mn KD	MTD(%)	YTD (%)	Value (Mn KD)	(Mn Shrs)	(%)	(%)	High	Low	%
National Bank of Kuwait	0.829	0.001	0.12%	1.74	14.86	3.6%	5,963	1%	4%	2.61	3.16	11.7%	1.4%	0.871	0.670	21.79%
Kuwait Finance House	0.728	-0.001	-0.14%	2.96	24.29	2.1%	6,098	1%	18%	2.20	3.02	12.2%	1.3%	0.740	0.501	22.28%
Mobile Telecommunications	0.602	0.002	0.33%	2.01	12.01	5.2%	2,605	0%	-1%	2.36	3.93	16.7%	4.6%	0.641	0.503	9.52%
Ahli United Bank BSC	0.221	-0.002	-0.90%	1.75	10.22	5.2%	2,240	6%	2%	4.47	20.10	17.1%	1.8%	0.247	0.152	8.18%
Boubyan Bank	0.659	-0.004	-0.60%	3.64	33.45	0.9%	2,095	1%	22%	0.47	0.70	10.9%	1.2%	0.671	0.452	7.66%
Agility Public Warehousing	1.068	-0.014	-1.29%	1.86	23.56	1.7%	2,044	13%	58%	2.55	2.38	7.9%	4.2%	1.185	0.520	7.47%
Mabane Co.	0.755	0.000	0.00%	1.87	15.68	1.3%	884	8%	22%	0.13	0.18	11.9%	5.8%	0.761	0.523	3.23%
Gulf Bank	0.228	0.000	0.00%	1.03	10.79	4.2%	687	5%	4%	0.94	4.11	9.6%	1.0%	0.245	0.187	2.51%
Burgan Bank	0.227	0.001	0.44%	0.79	7.02	5.0%	595	1%	7%	0.57	2.53	11.3%	1.2%	0.234	0.175	2.17%
Human Soft Holding	3.575	-0.035	-0.97%	5.41	12.12	5.1%	435	9%	-6%	0.94	0.26	44.6%	30.3%	4.030	2.486	1.59%
Warba Bank	0.253	-0.002	-0.78%	1.83	24.09	0.0%	398	0%	7%	0.23	0.92	7.6%	0.5%	0.278	0.190	1.46%
Qurain Petrochemical Industries	0.425	-0.001	-0.23%	1.03	15.38	3.6%	434	-1%	26%	0.14	0.33	6.7%	3.6%	0.447	0.210	1.59%
Boubyan Petrochemical	0.909	-0.005	-0.55%	2.05	38.78	5.7%	458	-2%	42%	0.10	0.10	5.3%	2.1%	0.960	0.470	1.68%
Kuwait Projects Company Holding	0.159	0.000	0.00%	0.85	9.60	5.8%	288	1%	0%	0.05	0.34	8.9%	0.3%	0.181	0.147	1.05%
Shamal Az-Zour Al-Oula Power & Water	0.253	-0.001	-0.39%	3.63	22.62	0.0%	278	-1%	-9%	0.21	0.83	16.1%	2.3%	0.500	0.245	1.02%
National Industries Group Holding	0.225	0.004	1.81%	0.83	6.75	4.9%	313	4%	28%	2.96	13.19	12.3%	3.7%	0.227	0.147	1.14%
Boursa Kuwait Securities Co	1.218	-0.001	-0.08%	7.62	25.50	0.0%	245	6%	11%	0.34	0.28	29.9%	26.5%	1.219	0.990	0.89%
Kuwait International Bank	0.217	-0.002	-0.91%	0.79	12.90	4.6%	221	0%	4%	1.28	5.96	6.1%	0.6%	0.226	0.162	0.81%
ALAFCO Aviation Lease and Finance	0.230	0.002	0.88%	0.69	12.37	4.3%	219	7%	6%	0.28	1.23	5.5%	1.4%	0.239	0.147	0.80%
Mezzan Holding	0.651	0.000	0.00%	1.88	35.18	2.6%	198	9%	7%	0.21	0.33	5.3%	2.2%	0.665	0.551	0.72%
Gulf Cable and Electrical Industries	0.848	0.003	0.36%	1.02	41.89	3.2%	177	3%	12%	0.05	0.06	2.4%	2.2%	0.888	0.460	0.65%
National Investments	0.187	0.000	0.00%	0.82	13.91	4.3%	149	-2%	39%	0.04	0.20	5.9%	5.0%	0.198	0.080	0.55%
Alimti az Investment Group	0.125	-0.001	-0.79%	0.60	6.58	6.3%	130	-2%	12%	0.57	4.58	9.1%	5.2%	0.130	0.075	0.47%
Kuwait Real Estate	0.135	0.001	0.75%	0.93	16.88	0.3%	119	-6%	24%	0.23	1.76	5.5%	2.2%	0.146	0.072	0.43%
Integrated Holding	0.426	0.009	2.16%	1.37	11.87	9.4%	94	4%	16%	0.64	1.53	11.5%	8.5%	0.441	0.342	0.34%
<b>Total</b>		<b>-13.35</b>	<b>-0.20%</b>	<b>1.84</b>	<b>15.88</b>	<b>3.16%</b>	<b>27,368</b>	<b>2.4%</b>	<b>12.1%</b>	<b>24.59</b>	<b>72.02</b>	<b>11.58%</b>	<b>1.58%</b>			<b>100%</b>

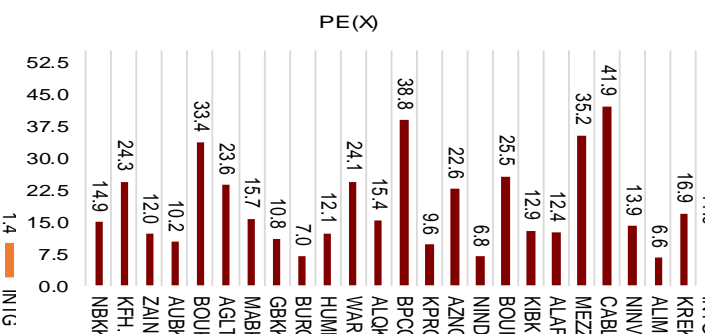
Market Capitalization



Price to Book Value

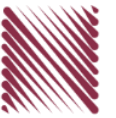


Price to Earning Value



# DAILY MARKET COVERAGE REPORT

## NIC MENA SECURITIES - RESEARCH AND STUDIES DEP



Premier Market	Price			Valuation Multiples			MKT Cap	Price Performance		ROE	ROA
Company	Close (KD)	Day Δ	Day % Δ	PBV(X)	PE(X)	DY%	Mn KD	MTD(%)	YTD (%)	(%)	(%)
National Bank of Kuwait	0.829	0.001	0.12%	1.74	14.9	3.6%	5,963	0.7%	3.6%	11.7%	1.4%
Kuwait Finance House	0.728	-0.001	-0.14%	2.96	24.3	2.1%	6,098	0.7%	18.3%	12.2%	1.3%
Mobile Telecommunications	0.602	0.002	0.33%	2.01	12.0	5.2%	2,605	-0.2%	-0.7%	16.7%	4.6%
Ahli United Bank BSC	0.221	-0.002	-0.90%	1.75	10.2	5.2%	2,240	6.3%	2.2%	17.1%	1.8%
Boubyan Bank	0.659	-0.004	-0.60%	3.64	33.4	0.9%	2,095	0.6%	21.8%	10.9%	1.2%
Agility Public Warehousing	1.068	-0.014	-1.29%	1.86	23.6	1.7%	2,044	12.7%	58.0%	7.9%	4.2%
Mabane Co.	0.755	0.000	0.00%	1.87	15.7	1.3%	884	8.0%	21.8%	11.9%	5.8%
Gulf Bank	0.228	0.000	0.00%	1.03	10.8	4.2%	687	5.1%	4.1%	9.6%	1.0%
Burgan Bank	0.227	0.001	0.44%	0.79	7.0	5.0%	595	0.9%	6.6%	11.3%	1.2%
Human Soft Holding	3.575	-0.035	-0.97%	5.41	12.1	5.1%	435	8.7%	-5.9%	44.6%	30.3%
Warba Bank	0.253	-0.002	-0.78%	1.83	24.1	0.0%	398	0.0%	7.2%	7.6%	0.5%
Qurain Petrochemical Industries	0.425	-0.001	-0.23%	1.03	15.4	3.6%	434	-1.2%	25.7%	6.7%	3.6%
Boubyan Petrochemical	0.909	-0.005	-0.55%	2.05	38.8	5.7%	458	-1.7%	42.0%	5.3%	2.1%
Kuwait Projects Company Holding	0.159	0.000	0.00%	0.85	9.6	5.8%	288	1.3%	0.0%	8.9%	0.3%
Shamal Az-Zour Al-Oula Power & Water	0.253	-0.001	-0.39%	3.63	22.6	0.0%	278	-0.8%	-8.7%	16.1%	2.3%
National Industries Group Holding	0.225	0.004	1.81%	0.83	6.8	4.9%	313	3.7%	27.8%	12.3%	3.7%
Boursa Kuwait Securities Co	1.218	-0.001	-0.08%	7.62	25.5	0.0%	245	6.2%	10.7%	29.9%	26.5%
Kuwait International Bank	0.217	-0.002	-0.91%	0.79	12.9	4.6%	221	0.0%	4.3%	6.1%	0.6%
ALAFCO Aviation Lease and Finance	0.230	0.002	0.88%	0.69	12.4	4.3%	219	7.0%	6.5%	5.5%	1.4%
Mezzan Holding	0.651	0.000	0.00%	1.88	35.2	2.6%	198	9.4%	7.1%	5.3%	2.2%
Gulf Cable and Electrical Industries	0.848	0.003	0.36%	1.02	41.9	3.2%	177	3.2%	12.3%	2.4%	2.2%
National Investments	0.187	0.000	0.00%	0.82	13.9	4.3%	149	-2.1%	38.5%	5.9%	5.0%
Alimtiq Investment Group	0.125	-0.001	-0.79%	0.60	6.6	6.3%	130	-1.6%	11.6%	9.1%	5.2%
Kuwait Real Estate	0.135	0.001	0.75%	0.93	16.9	0.3%	119	-5.6%	23.9%	5.5%	2.2%
Integrated Holding	0.426	0.009	2.16%	1.37	11.9	9.4%	94	3.9%	16.4%	11.5%	8.5%
<b>Total</b>		<b>-13.35</b>	<b>-0.20%</b>	<b>1.84</b>	<b>15.88</b>	<b>3.16%</b>	<b>27,368</b>	<b>2.4%</b>	<b>12.1%</b>	<b>11.58%</b>	<b>1.58%</b>

Premier Market	Price			Moving Average		RSI	MKT Cap	Price Performance		52 Week (KD)	
Discription	Close (KD)	Day Δ	Day % Δ	50 Day	200 Day	14 Day	Mn KD	MTD(%)	YTD (%)	High	Low
Premier Index	6,780	-13.35	-0.20%	6,437	6,130	80	27,368	2.4%	12.1%	6,815	4,983

### Top 5 Performrs (Today's Price Change)

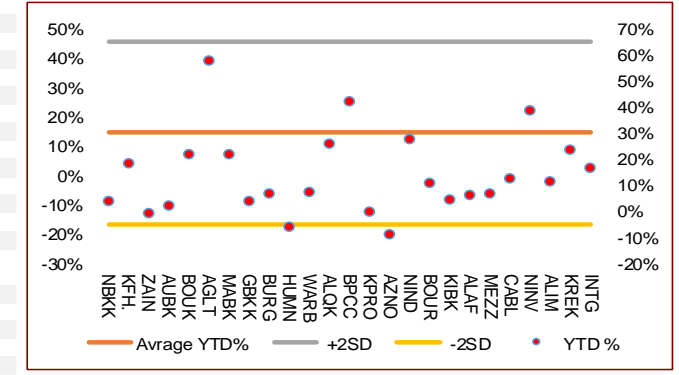
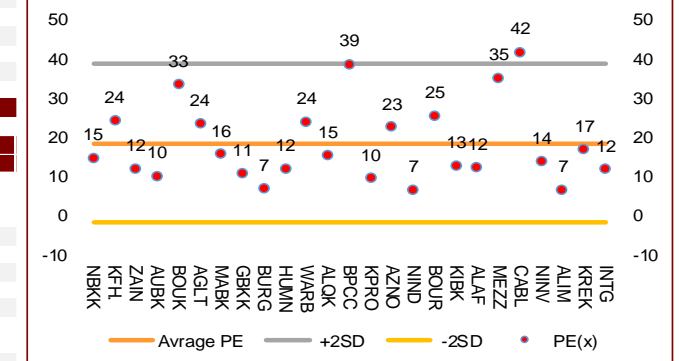
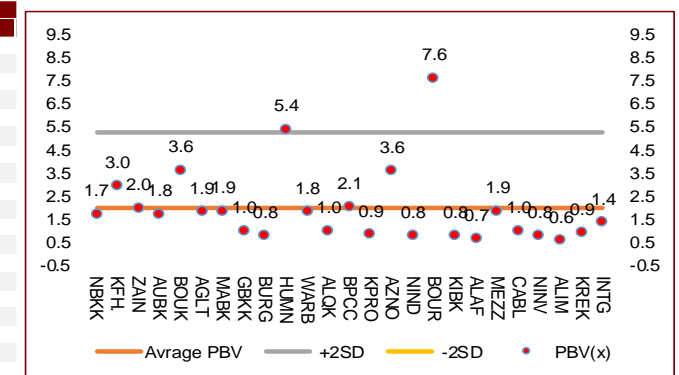
Integrated Holding	0.426	0.009	2.16%	0.413	0.383	55	94	3.9%	16.4%	0.441	0.342
National Industries Group Holding	0.225	0.004	1.81%	0.198	0.183	61	313	3.7%	27.8%	0.227	0.147
ALAFCO Aviation Lease and Finance	0.230	0.002	0.88%	0.210	0.188	74	219	7.0%	6.5%	0.239	0.147
Kuwait Real Estate	0.135	0.001	0.75%	0.132	0.109	43	119	-5.6%	23.9%	0.146	0.072
Burgan Bank	0.227	0.001	0.44%	0.223	0.211	54	595	0.9%	6.6%	0.234	0.175

### Middel Performrs (Today's Price Change)

Gulf Cable and Electrical Industries	0.848	0.003	0.36%	0.848	0.741	65	177	3.2%	12.3%	0.888	0.460
Mobile Telecommunications	0.602	0.002	0.33%	0.613	0.604	42	2,605	-0.2%	-0.7%	0.641	0.503
National Bank of Kuwait	0.829	0.001	0.12%	0.817	0.809	45	5,963	0.7%	3.6%	0.871	0.670
Mabane Co.	0.755	0.000	0.00%	0.696	0.649	78	884	8.0%	21.8%	0.761	0.523
Gulf Bank	0.228	0.000	0.00%	0.217	0.218	85	687	5.1%	4.1%	0.245	0.187
Kuwait Projects Company Holding	0.159	0.000	0.00%	0.164	0.159	44	288	1.3%	0.0%	0.181	0.147
Mezzan Holding	0.651	0.000	0.00%	0.581	0.601	89	198	9.4%	7.1%	0.665	0.551
National Investments	0.187	0.000	0.00%	0.178	0.145	54	149	-2.1%	38.5%	0.198	0.080
Boursa Kuwait Securities Co	1.218	-0.001	-0.08%	1.142	0.921	94	245	6.2%	10.7%	1.219	0.990
Kuwait Finance House	0.728	-0.001	-0.14%	0.100	0.100	58	6,098	0.7%	18.3%	1.210	0.996
Qurain Petrochemical Industries	0.425	-0.001	-0.23%	0.403	0.335	67	434	-1.2%	25.7%	0.447	0.210
Shamal Az-Zour Al-Oula Power & Water	0.253	-0.001	-0.39%	0.260	0.266	19	278	-0.8%	-8.7%	0.500	0.245
Boubyan Petrochemical	0.909	-0.005	-0.55%	0.865	0.662	45	458	-1.7%	42.0%	0.960	0.470
Boubyan Bank	0.659	-0.004	-0.60%	0.600	0.565	74	2,095	0.6%	21.8%	0.671	0.452
Warba Bank	0.253	-0.002	-0.78%	0.244	0.235	70	398	0.0%	7.2%	0.278	0.190

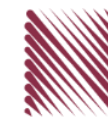
### Bottom 5 Performrs (Today's Price Change)

Alimtiq Investment Group	0.125	-0.001	-0.79%	0.115	0.104	75	130	-1.6%	11.6%	0.130	0.075
Ahli United Bank BSC	0.221	-0.002	-0.90%	0.210	0.216	65	2,240	6.3%	2.2%	0.247	0.152
Kuwait International Bank	0.217	-0.002	-0.91%	0.206	0.200	77	221	0.0%	4.3%	0.226	0.162
Human Soft Holding	3.575	-0.035	-0.97%	3.690	3.303	39	435	8.7%	-5.9%	4.030	2.486
Agility Public Warehousing	1.068	-0.014	-1.29%	0.771	0.700	85	2,044	12.7%	58.0%	1.185	0.520



# DAILY MARKET COVERAGE REPORT

NIC MENA SECURITIES - RESEARCH AND STUDIES DEP



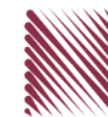
Banking Sector		Price			Valuation Multiples			MKT Cap	Price Performance		Trading Indicators		ROE	ROA	52 Week (KD)		MKT Cap
Company	Close (KD)	Day Δ	Day % Δ	PBV(X)	PE(X)	DY%	Mn KD	MTD(%)	YTD (%)	Value (Mn KD)	(Mn Shrs)	(%)	(%)	High	Low	%	
National Bank of Kuwait	0.829	0.001	0.12%	1.74	14.86	3.6%	5,963	1%	4%	2.61	3.16	11.7%	1.4%	0.871	0.670	16.39%	
Kuwait Finance House	0.728	-0.001	-0.14%	2.96	24.29	2.1%	6,098	1%	18%	2.20	3.02	12.2%	1.3%	0.740	0.501	16.76%	
Ahli United Bank BSC	0.221	-0.002	-0.90%	1.75	10.22	5.2%	2,240	6%	2%	4.47	20.10	17.1%	1.8%	0.247	0.152	6.16%	
Boubyan Bank	0.659	-0.004	-0.60%	3.64	33.45	0.9%	2,095	1%	22%	0.47	0.70	10.9%	1.2%	0.671	0.452	5.76%	
Commercial Bank of Kuwait	0.500	0.000	0.00%	1.31	0.00	3.7%	962	0%	0%	0.01	0.02	0.0%	0.0%	0.605	0.465	2.64%	
Gulf Bank	0.228	0.000	0.00%	1.03	10.79	4.2%	687	5%	4%	0.94	4.11	9.6%	1.0%	0.245	0.187	1.89%	
Burgan Bank	0.227	0.001	0.44%	0.79	7.02	5.0%	595	1%	7%	0.57	2.53	11.3%	1.2%	0.234	0.175	1.63%	
Ahli United Bank	0.290	-0.001	-0.34%	1.38	11.42	4.2%	628	1%	10%	0.18	0.62	12.1%	1.3%	0.294	0.219	1.73%	
Warba Bank	0.253	-0.002	-0.78%	1.83	24.09	0.0%	398	0%	7%	0.23	0.92	7.6%	0.5%	0.278	0.190	1.10%	
Al Ahli Bank of Kuwait	0.204	0.001	0.49%	0.62	12.00	6.5%	344	0%	2%	0.04	0.21	5.1%	0.6%	0.210	0.149	0.95%	
Kuwait International Bank	0.217	-0.002	-0.91%	0.79	12.90	4.6%	221	0%	4%	1.28	5.96	6.1%	0.6%	0.226	0.162	0.61%	
<b>Total Banking Sector - 11 Companies</b>				<b>1.84</b>	<b>16.86</b>	<b>3.1%</b>	<b>20,231</b>			<b>13.00</b>	<b>41.36</b>	<b>10.90%</b>	<b>1.21%</b>			<b>55.60%</b>	

Basic Materials		Price			Valuation Multiples			MKT Cap	Price Performance		Trading Indicators		ROE	ROA	52 Week (KD)		MKT Cap
Company	Close (KD)	Day Δ	Day % Δ	PBV(X)	PE(X)	DY%	Mn KD	MTD(%)	YTD (%)	Value (Mn KD)	(Mn Shrs)	(%)	(%)	High	Low	%	
Qurain Petrochemical Industries	0.425	-0.001	-0.23%	1.03	15.38	3.6%	434	-1%	26%	0.14	0.33	6.7%	3.6%	0.447	0.210	1.19%	
Boubyan Petrochemical	0.909	-0.005	-0.55%	2.05	38.78	5.7%	458	-2%	42%	0.10	0.10	5.3%	2.1%	0.960	0.470	1.26%	
Al Kout Industrial Projects	0.642	0.000	0.00%	2.09	13.53	7.8%	65	0%	-5%	0.00	0.00	15.4%	11.3%	0.808	0.628	0.18%	
Kuwait Foundry	0.299	0.001	0.34%	1.00	24.16	17.8%	22	9%	12%	0.01	0.03	4.1%	3.8%	0.307	0.220	0.06%	
<b>Total Basic Materials - 4 Companies</b>				<b>1.41</b>	<b>21.40</b>	<b>5.2%</b>	<b>979</b>			<b>0.24</b>	<b>0.46</b>	<b>6.57%</b>	<b>5.07%</b>			<b>2.69%</b>	

Consumer Goods		Price			Valuation Multiples			MKT Cap	Price Performance		Trading Indicators		ROE	ROA	52 Week (KD)		MKT Cap
Company	Close (KD)	Day Δ	Day % Δ	PBV(X)	PE(X)	DY%	Mn KD	MTD(%)	YTD (%)	Value (Mn KD)	(Mn Shrs)	(%)	(%)	High	Low	%	
Mezzan Holding	0.651	0.000	0.00%	1.88	35.18	2.6%	198	9%	7%	0.21	0.33	5.3%	2.2%	0.665	0.551	0.54%	
Livestock Transport and Trading	0.190	0.000	0.00%	0.99	33.87	0.1%	40	3%	8%	0.00	0.02	2.9%	2.0%	0.210	0.171	0.11%	
<b>Total Consumer Goods - 2 Companies</b>				<b>1.63</b>	<b>34.95</b>	<b>2.1%</b>	<b>238</b>			<b>0.21</b>	<b>0.35</b>	<b>4.67%</b>	<b>3.71%</b>			<b>0.65%</b>	

# DAILY MARKET COVERAGE REPORT

NIC MENA SECURITIES - RESEARCH AND STUDIES DEP

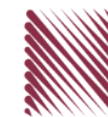


Consumer Services																
Company	Price			Valuation Multiples			MKT Cap	Price Performance		Trading Indicators		ROE	ROA	52 Week (KD)		MKT Cap
	Close (KD)	Day Δ	Day % Δ	PBV(X)	PE(X)	DY%	Mn KD	MTD(%)	YTD (%)	Value (Mn KD)	(Mn Shrs)	(%)	(%)	High	Low	%
Jazeera Airways	0.681	0.009	1.34%	3.38	9.12	5.1%	136	11%	-7%	0.08	0.12	37.1%	9.0%	0.750	0.515	0.37%
Kuwait National Cinema	0.940	-0.050	-5.05%	1.08	10.15	5.2%	87	27%	25%	0.01	0.01	10.6%	7.2%	0.990	0.600	0.24%
Oula Fuel Marketing	0.150	0.000	0.00%	0.90	15.70	3.9%	61	-1%	22%	0.02	0.14	5.7%	3.2%	0.168	0.100	0.17%
Al Soor Fuel Marketing	0.145	0.002	1.40%	0.89	16.97	3.4%	59	-5%	19%	0.02	0.14	5.3%	3.7%	0.164	0.097	0.16%
Sultan Center Food Products	0.171	-0.003	-1.72%	1.06	21.52	0.0%	48	7%	71%	0.09	0.50	4.9%	0.7%	0.200	0.090	0.13%
Jiyad Holding	0.052	-0.001	-0.95%	0.46	10.37	0.0%	18	26%	17%	0.07	1.38	4.5%	2.8%	0.054	0.029	0.05%
IFA Hotels and Resorts	0.045	-0.001	-2.16%	1.68	-1.28	0.0%	29	0%	132%	0.15	3.32	-131.5%	-8.1%	0.050	0.016	0.08%
Kuwait Resorts	0.078	0.000	-0.51%	0.55	14.54	0.0%	15	8%	23%	0.09	1.18	3.8%	3.2%	0.079	0.041	0.04%
Future Kid Entertainment and Real Estate	0.104	0.001	0.97%	0.60	39.29	11.1%	11	34%	22%	0.03	0.27	1.5%	0.9%	0.117	0.067	0.03%
Al Eid Food	0.188	-0.001	-0.53%	1.26	15.01	0.0%	23	-2%	127%	0.05	0.27	8.4%	6.1%	0.200	0.051	0.06%
Kuwait Hotels	0.060	0.000	0.00%	0.84	-3.46	0.0%	3	3%	1%	0.00	0.00	-24.4%	-13.2%	0.111	0.050	0.01%
Palms Agro Production	0.066	0.000	0.00%	0.56	-46.60	15.1%	3	-5%	2%	0.00	0.00	-1.2%	-0.9%	0.080	0.052	0.01%
<b>Total Consumer Services - 12 Companies</b>				<b>1.15</b>	<b>35.00</b>	<b>3.6%</b>	<b>494</b>			<b>0.60</b>	<b>7.33</b>	<b>3.28%</b>	<b>3.04%</b>			<b>1.36%</b>

Financial Services																
Company	Price			Valuation Multiples			MKT Cap	Price Performance		Trading Indicators		ROE	ROA	52 Week (KD)		MKT Cap
	Close (KD)	Day Δ	Day % Δ	PBV(X)	PE(X)	DY%	Mn KD	MTD(%)	YTD (%)	Value (Mn KD)	(Mn Shrs)	(%)	(%)	High	Low	%
Egypt Kuwait Holding	0.325	0.000	0.00%	2.12	12.07	5.5%	366	-9%	1%	0.00	0.00	17.6%	7.1%	0.436	0.288	1.01%
Kuwait Projects Company Holding	0.159	0.000	0.00%	0.85	9.60	5.8%	288	1%	0%	0.05	0.34	8.9%	0.3%	0.181	0.147	0.79%
National Industries Group Holding	0.225	0.004	1.81%	0.83	6.75	4.9%	313	4%	28%	2.96	13.19	12.3%	3.7%	0.227	0.147	0.86%
Boursa Kuwait Securities Co	1.218	-0.001	-0.08%	7.62	25.50	0.0%	245	6%	11%	0.34	0.28	29.9%	26.5%	1.219	0.990	0.67%
GFH Financial Group	0.058	-0.001	-1.87%	0.64	8.03	4.8%	199	-2%	23%	0.16	2.76	8.0%	1.3%	0.065	0.041	0.55%
National Investments	0.187	0.000	0.00%	0.82	13.91	4.3%	149	-2%	39%	0.04	0.20	5.9%	5.0%	0.198	0.080	0.41%
Tamdeen Investment	0.255	-0.007	-2.67%	0.31	10.57	4.7%	87	4%	-18%	0.04	0.16	3.0%	2.2%	0.371	0.199	0.24%
Alimtiq Investment Group	0.125	-0.001	-0.79%	0.60	6.58	6.3%	130	-2%	12%	0.57	4.58	9.1%	5.2%	0.130	0.075	0.36%
Commercial Facilities	0.189	-0.001	-0.53%	0.59	7.28	8.9%	96	4%	-1%	0.05	0.27	8.0%	4.2%	0.223	0.161	0.26%
Aayan Leasing and Investment	0.190	0.001	0.53%	1.95	-9.12	1.1%	133	10%	98%	6.19	32.22	-21.4%	-4.9%	0.189	0.039	0.37%
Kuwait Investment	0.195	-0.005	-2.50%	0.85	6.10	5.2%	107	4%	60%	0.05	0.27	13.9%	6.0%	0.212	0.098	0.29%
Noor Financial Investment	0.235	-0.004	-1.67%	1.44	11.49	2.1%	93	-7%	38%	0.03	0.11	12.5%	7.5%	0.271	0.115	0.26%
Arzan Financial Group for Financing and Invest	0.128	0.003	2.40%	1.02	91.54	0.0%	100	14%	129%	1.02	8.06	1.1%	0.7%	0.130	0.029	0.28%
Kuwait Financial Centre	0.131	0.004	3.15%	0.66	9.00	3.8%	63	25%	57%	0.38	2.96	7.3%	3.5%	0.131	0.070	0.17%
Gulf Investment House	0.230	0.014	6.48%	2.58	425.43	0.0%	93	31%	176%	1.52	6.81	0.6%	0.5%	0.231	0.044	0.26%
Al Bareeq Holding	0.089	0.000	0.00%	0.93	17.70	0.0%	39	-4%	35%	0.00	0.02	5.2%	5.0%	0.106	0.014	0.11%
Arabi Group Holdings	0.198	0.000	0.00%	1.07	-19.90	0.0%	33	0%	0%	0.00	0.00	-5.4%	-0.6%	0.198	0.198	0.09%
Kuwait and Middle East Financial Investment	0.141	0.004	2.92%	2.29	56.31	0.0%	37	2%	16%	0.05	0.33	4.1%	3.2%	0.154	0.078	0.10%

# DAILY MARKET COVERAGE REPORT

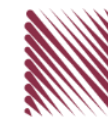
NIC MENA SECURITIES - RESEARCH AND STUDIES DEP



Financial services Company	Price			Valuation Multiples			MKT Cap Mn KD	Price Performance		Trading Indicators		ROE (%)	ROA (%)	52 Week (KD)		MKT Cap %
	Close (KD)	Day Δ	Day % Δ	PBV(X)	PE(X)	DY%		MTD(%)	YTD (%)	Value (Mn KD)	(Mn Shrs)			High	Low	
Privatization Holding	0.052	0.005	10.43%	0.38	-46.80	0.0%	32	10%	29%	4.39	89.98	-0.8%	-0.5%	0.056	0.039	0.09%
Asiya Capital Investments	0.042	-0.001	-2.53%	0.45	21.80	0.1%	33	0%	15%	0.02	0.54	2.1%	2.0%	0.047	0.029	0.09%
Umm Al Qaiwain General Investment Co	0.077	0.000	0.00%	0.52	14.45	4.7%	28	0%	3%	0.00	0.00	3.6%	3.3%	0.096	0.064	0.08%
Securities House	0.070	-0.002	-2.24%	0.96	-102.19	0.0%	39	28%	64%	0.69	9.77	-0.9%	-0.7%	0.079	0.032	0.11%
KAMCO Investment	0.107	0.001	0.94%	0.65	12.08	0.0%	37	8%	45%	0.11	1.09	5.4%	2.3%	0.113	0.067	0.10%
First Investment	0.089	0.000	-0.22%	1.38	-1.21	0.0%	58	10%	42%	1.36	15.33	-113.6%	-62.0%	0.095	0.033	0.16%
Inovent BSC Public	0.112	-0.001	-0.88%	0.78	15.02	5.3%	33	19%	71%	0.38	3.35	5.2%	2.9%	0.120	0.044	0.09%
Coast Investment and Development	0.062	0.001	0.82%	0.65	61.29	0.0%	36	16%	27%	0.24	3.91	1.1%	1.0%	0.064	0.029	0.10%
Al Madar Finance and Investment	0.140	0.003	2.19%	1.27	20.91	0.0%	29	9%	54%	0.39	2.79	6.1%	5.0%	0.138	0.062	0.08%
Bayan Investment	0.056	-0.002	-2.61%	0.56	-28.94	0.0%	20	-8%	34%	0.35	6.21	-1.9%	-0.8%	0.065	0.032	0.06%
Al Manar Financing and Leasing	0.068	0.000	-0.30%	0.61	17.40	0.8%	21	8%	36%	0.05	0.71	3.5%	2.7%	0.074	0.040	0.06%
Manazel Holding	0.054	-0.002	-3.04%	1.19	34.84	0.0%	23	3%	71%	0.14	2.52	3.4%	0.8%	0.059	0.026	0.06%
Kuwait Finance and Investment	0.122	0.004	3.39%	0.96	54.78	0.0%	38	22%	184%	0.12	1.05	1.8%	1.2%	0.119	0.038	0.10%
National International Holding	0.087	-0.003	-2.79%	0.46	10.46	3.4%	18	10%	5%	0.09	1.00	4.4%	3.3%	0.097	0.052	0.05%
Osoul Investment	0.095	0.000	0.10%	0.69	7.74	0.0%	14	6%	19%	0.02	0.21	9.0%	8.2%	0.110	0.072	0.04%
UniCap Investment and Finance	0.076	0.001	1.47%	0.72	-35.65	0.0%	17	20%	80%	0.14	1.96	-2.0%	-1.0%	0.078	0.035	0.05%
Amar Finance and Leasing	0.070	0.015	26.21%	0.79	58.86	0.0%	14	43%	44%	0.09	1.55	1.3%	1.2%	0.057	0.039	0.04%
Gulf North Africa Holding	0.061	0.000	0.00%	0.81	78.33	0.0%	9	1%	-7%	0.00	0.05	1.0%	0.6%	0.065	0.052	0.03%
Al Salam Group Holding	0.032	0.000	0.00%	0.27	237.80	0.0%	8	22%	25%	0.14	4.45	0.1%	0.1%	0.034	0.019	0.02%
International Financial Advisors	0.121	-0.002	-1.63%	3.65	-1.64	0.5%	30	10%	102%	0.32	2.64	-222.8%	-19.3%	0.127	0.028	0.08%
Al Madina for Finance and Investment	0.016	0.000	0.00%	0.55	-3.06	0.0%	6	0%	3%	0.00	0.00	-17.9%	-7.7%	0.019	0.010	0.02%
Credit Rating and Collection	0.030	0.000	0.68%	0.91	-19.92	0.0%	5	4%	35%	0.00	0.04	-4.6%	-4.3%	0.035	0.018	0.01%
Ekttitab Holding	0.022	0.000	-0.90%	0.53	-15.49	0.0%	7	29%	46%	0.19	8.55	-3.4%	-3.0%	0.023	0.011	0.02%
Kuwait Syrian Holding Co	0.034	0.001	2.10%	0.29	-17.37	0.0%	6	4%	7%	0.01	0.22	-1.7%	-1.1%	0.043	0.025	0.02%
Warba Capital Holding	0.074	-0.002	-2.25%	0.82	-11.76	0.0%	7	2%	52%	0.00	0.01	-7.0%	-6.2%	0.080	0.042	0.02%
National Consumer Holding	0.067	0.006	10.00%	0.74	330.11	0.0%	6	50%	37%	0.01	0.21	0.2%	0.2%	0.069	0.036	0.02%
Al Deera Holding	0.206	-0.001	-0.48%	4.17	-53.98	0.0%	19	6%	131%	0.01	0.07	-7.7%	-1.7%	0.245	0.077	0.05%
Al Mal Investment Company	0.006	0.000	0.00%	0.26	-0.55	0.0%	2	0%	0%	0.00	0.00	-47.6%	-23.3%	0.011	0.006	0.01%
Gulf Franchising Holding	0.063	0.001	1.78%	0.99	-2.73	0.0%	3	8%	5%	0.00	0.00	-36.2%	-10.8%	0.072	0.041	0.01%
<b>Total Financial Services - 47 Companies</b>				<b>0.91</b>	<b>20.58</b>	<b>3.3%</b>	<b>3,169</b>			<b>22.70</b>	<b>230.76</b>	<b>4.42%</b>	<b>4.14%</b>			<b>8.71%</b>

# DAILY MARKET COVERAGE REPORT

NIC MENA SECURITIES - RESEARCH AND STUDIES DEP



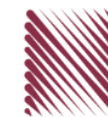
Health Care	Price			Valuation Multiples			MKT Cap	Price Performance		Trading Indicators		ROE	ROA	52 Week (KD)		MKT Cap
	Company	Close (KD)	Day Δ	Day % Δ	PBV(X)	PE(X)		DY%	Mn KD	MTD(%)	YTD (%)			Value (Mn KD)	(Mn Shrs)	
Al-Maidan Clinic for Oral Health Services	1.240	0.000	0.00%	8.03	48.56	0.6%	310	0%	0%	0.00	0.00	16.5%	10.9%	1.240	1.220	0.85%
Advanced Technology	0.495	0.000	0.00%	1.29	40.30	3.0%	74	0%	-13%	0.00	0.00	3.2%	0.7%	0.700	0.495	0.20%
Yiaco Medical	0.521	0.021	4.20%	4.47	38.85	0.0%	9	-2%	-38%	0.00	0.00	11.5%	0.6%	1.000	0.460	0.02%
<b>Total Health Care - 3 Companies</b>				<b>4.00</b>	<b>46.49</b>	<b>1.0%</b>	<b>393</b>			<b>0.00</b>	<b>0.00</b>	<b>8.61%</b>	<b>4.68%</b>			<b>1.08%</b>

Industrials	Price			Valuation Multiples			MKT Cap	Price Performance		Trading Indicators		ROE	ROA	52 Week (KD)		MKT Cap
	Company	Close (KD)	Day Δ	Day % Δ	PBV(X)	PE(X)		DY%	Mn KD	MTD(%)	YTD (%)			Value (Mn KD)	(Mn Shrs)	
Agility Public Warehousing	1.068	-0.014	-1.29%	1.86	23.56	1.7%	2,044	13%	58%	2.55	2.38	7.9%	4.2%	1.185	0.520	5.62%
Human Soft Holding	3.575	-0.035	-0.97%	5.41	12.12	5.1%	435	9%	-6%	0.94	0.26	44.6%	30.3%	4.030	2.486	1.20%
ALAFCO Aviation Lease and Finance	0.230	0.002	0.88%	0.69	12.37	4.3%	219	7%	6%	0.28	1.23	5.5%	1.4%	0.239	0.147	0.60%
Kuwait Cement	0.252	0.000	0.00%	0.86	44.73	5.9%	180	9%	9%	0.06	0.23	1.9%	1.3%	0.263	0.156	0.49%
Gulf Cable and Electrical Industries	0.848	0.003	0.36%	1.02	41.89	3.2%	177	3%	12%	0.05	0.06	2.4%	2.2%	0.888	0.460	0.49%
Integrated Holding	0.426	0.009	2.16%	1.37	11.87	9.4%	94	4%	16%	0.64	1.53	11.5%	8.5%	0.441	0.342	0.26%
Kuwait Portland Cement	0.899	-0.003	-0.33%	1.21	11.87	10.9%	90	1%	15%	0.07	0.08	10.2%	8.2%	0.967	0.683	0.25%
Educational Holding Group	0.664	-0.005	-0.75%	2.35	12.86	3.7%	100	-4%	39%	0.01	0.02	18.3%	16.7%	0.900	0.378	0.27%
United Projects for Aviation Services	0.312	0.031	11.03%	1.55	12.63	2.8%	118	-3%	8%	0.15	0.49	12.3%	7.8%	0.410	0.186	0.32%
Heavy Engineering Industries and Shipbuilding	0.474	0.015	3.27%	1.37	7.61	6.2%	85	12%	19%	1.19	2.57	18.0%	5.9%	0.465	0.328	0.23%
National Industries	0.163	-0.002	-1.21%	0.68	13.27	6.1%	57	7%	4%	0.00	0.02	5.1%	3.8%	0.180	0.143	0.16%
ACICO Industries	0.110	0.001	0.92%	0.35	14.28	4.5%	36	10%	22%	0.04	0.41	2.5%	0.6%	0.118	0.082	0.10%
Kuwait Company for Process Plant Constructi	0.601	0.025	4.34%	2.38	12.87	3.0%	64	7%	49%	0.55	0.92	18.5%	7.7%	0.584	0.225	0.18%
Ras Al Khaimah for White Cement and Constr	0.064	0.000	0.00%	0.50	19.61	8.6%	32	-5%	-2%	0.00	0.00	2.6%	2.0%	0.071	0.061	0.09%
Combined Group Contracting	0.349	0.026	8.05%	1.27	16.51	5.6%	60	24%	74%	0.81	2.40	7.7%	1.2%	0.323	0.138	0.16%
Sharjah Cement and Industrial Development	0.043	0.001	1.19%	0.21	25.50	12.3%	26	6%	1%	0.01	0.30	0.8%	0.6%	0.056	0.035	0.07%
KGL Logistics	0.032	0.000	0.00%	0.24	5.17	0.1%	24	0%	13%	0.00	0.00	4.6%	2.9%	0.034	0.023	0.07%
Kuwait and Gulf Link Transport	0.061	0.000	0.66%	0.26	18.54	0.0%	17	15%	16%	0.39	6.23	1.4%	0.4%	0.061	0.042	0.05%
Shuaiba Industrial	0.177	0.000	0.00%	0.99	55.01	5.6%	18	-5%	14%	0.01	0.06	1.8%	1.4%	0.195	0.122	0.05%
National Cleaning	0.075	0.005	7.14%	0.48	10.91	6.2%	17	20%	40%	0.24	3.46	4.4%	1.5%	0.078	0.045	0.05%
Fujairah Cement Industries	0.034	0.000	0.00%	0.14	16.68	12.2%	12	8%	1%	0.00	0.00	0.8%	0.4%	0.043	0.028	0.03%
Hilal Cement	0.091	0.000	0.00%	0.79	-7.48	16.5%	9	18%	0%	0.00	0.00	-10.6%	-6.2%	0.126	0.065	0.03%
Mubarrad Holding	0.101	-0.002	-1.94%	0.80	16.29	4.6%	17	12%	41%	0.27	2.66	4.9%	4.1%	0.107	0.053	0.05%
Specialities Group Holding	0.101	-0.001	-0.98%	0.54	12.00	0.0%	16	6%	29%	0.12	1.24	4.5%	3.5%	0.111	0.052	0.04%
National Ranges	0.035	-0.001	-2.23%	0.64	-2.56	0.0%	10	-7%	87%	0.01	0.15	-24.9%	-5.3%	0.040	0.009	0.03%
Salbookh Trading	0.044	-0.001	-2.67%	0.60	-2.56	0.0%	4	3%	16%	0.01	0.17	-23.2%	-15.9%	0.047	0.026	0.01%
Metal and Recycling	0.184	0.005	2.79%	1.54	-7.81	0.0%	17	7%	247%	0.13	0.69	-19.7%	-10.1%	0.179	0.032	0.05%
Equipment Holding	0.033	0.000	0.00%	0.39	-224.18	0.0%	3	0%	12%	0.00	0.00	-0.2%	-0.1%	0.034	0.023	0.01%
<b>Total Industrials - 28 Companies</b>				<b>1.30</b>	<b>18.76</b>	<b>3.4%</b>	<b>3,979</b>			<b>8.54</b>	<b>27.57</b>	<b>6.92%</b>	<b>5.16%</b>			<b>10.94%</b>



# DAILY MARKET COVERAGE REPORT

NIC MENA SECURITIES - RESEARCH AND STUDIES DEP



Insurance	Price			Valuation Multiples			MKT Cap	Price Performance		Trading Indicators		ROE	ROA	52 Week (KD)		MKT Cap
	Company	Close (KD)	Day Δ	Day % Δ	PBV(X)	PE(X)		DY%	Mn KD	MTD(%)	YTD (%)			Value (Mn KD)	(Mn Shrs)	
Gulf Insurance Group	0.710	-0.003	-0.42%	1.22	9.90	5.2%	132	7%	-12%	0.02	0.03	12.3%	1.7%	0.900	0.542	0.36%
Al Ahleia Insurance	0.476	0.017	3.70%	0.94	10.08	6.7%	103	-15%	6%	0.03	0.06	9.4%	3.3%	0.561	0.349	0.28%
Kuwait Insurance	0.374	0.000	0.00%	0.61	7.25	6.4%	69	0%	-3%	0.00	0.01	8.5%	4.6%	0.435	0.300	0.19%
Kuwait Reinsurance	0.333	-0.037	-10.00%	1.36	15.41	1.2%	73	-10%	72%	0.00	0.00	8.9%	3.2%	0.527	0.158	0.20%
Bahrain Kuwait Insurance	0.191	0.000	0.00%	0.93	12.88	6.1%	29	0%	0%	0.00	0.00	7.2%	1.1%	0.191	0.191	0.08%
Warba Insurance	0.120	0.003	2.56%	0.52	17.03	0.0%	20	13%	49%	0.24	2.03	3.1%	1.0%	0.121	0.069	0.05%
First Takaful Insurance	0.055	0.002	3.81%	0.66	6.91	0.0%	6	3%	47%	0.00	0.00	9.6%	5.9%	0.058	0.029	0.02%
Wethaq Takaful Insurance	0.030	-0.001	-1.95%	0.28	-38.06	0.0%	3	7%	48%	0.02	0.69	-0.7%	-0.7%	0.035	0.018	0.01%
<b>Total Insurance - 8 Companies</b>				<b>0.92</b>	<b>10.36</b>	<b>4.8%</b>	<b>435</b>			<b>0.31</b>	<b>2.83</b>	<b>8.86%</b>	<b>3.00%</b>			<b>1.20%</b>

Energy	Price			Valuation Multiples			MKT Cap	Price Performance		Trading Indicators		ROE	ROA	52 Week (KD)		MKT Cap
	Company	Close (KD)	Day Δ	Day % Δ	PBV(X)	PE(X)		DY%	Mn KD	MTD(%)	YTD (%)			Value (Mn KD)	(Mn Shrs)	
National Petroleum Services	0.950	0.000	0.00%	2.26	8.10	7.4%	92	-3%	-9%	0.00	0.00	27.9%	23.6%	1.199	0.855	0.25%
Independent Petroleum Group	0.554	0.021	3.94%	1.02	15.10	5.4%	100	9%	17%	0.00	0.00	6.8%	2.2%	0.561	0.375	0.28%
Burgan for Well Drilling Trading and Maintenanc	0.150	-0.002	-1.32%	0.54	15.24	0.0%	34	5%	-3%	0.14	0.92	3.6%	1.1%	0.219	0.060	0.09%
Energy House Holding	0.036	0.000	-0.56%	1.11	-4.91	0.0%	27	8%	26%	0.00	0.11	-22.5%	-17.0%	0.039	0.015	0.07%
Gulf Petroleum Investment	0.026	-0.001	-2.95%	0.29	-8.47	0.0%	12	9%	36%	0.44	16.54	-3.4%	-2.3%	0.028	0.014	0.03%
Senergy Holding	0.045	-0.003	-5.87%	0.90	-1.88	0.0%	9	16%	112%	0.17	3.83	-47.9%	-30.4%	0.053	0.014	0.02%
<b>Total Energy - 6 Companies</b>				<b>0.99</b>	<b>31.87</b>	<b>4.4%</b>	<b>275</b>			<b>0.75</b>	<b>21.39</b>	<b>3.10%</b>	<b>2.18%</b>			<b>0.75%</b>

Real Estate	Price			Valuation Multiples			MKT Cap	Price Performance		Trading Indicators		ROE	ROA	52 Week (KD)		MKT Cap
	Company	Close (KD)	Day Δ	Day % Δ	PBV(X)	PE(X)		DY%	Mn KD	MTD(%)	YTD (%)			Value (Mn KD)	(Mn Shrs)	
Mabane Co.	0.755	0.000	0.00%	1.87	15.68	1.3%	884	8%	22%	0.13	0.18	11.9%	5.8%	0.761	0.523	2.43%
Salhia Real Estate	0.529	0.002	0.38%	1.60	12.17	3.8%	262	3%	5%	0.04	0.08	13.2%	5.8%	0.599	0.339	0.72%
Commercial Real Estate	0.113	0.004	3.67%	0.67	13.62	5.2%	199	4%	0%	1.26	11.42	5.0%	2.7%	0.126	0.085	0.55%
National Real Estate	0.175	-0.004	-2.23%	0.97	23.03	0.0%	263	-4%	132%	0.91	5.12	4.2%	2.4%	0.200	0.059	0.72%
Tamdeen Real Estate	0.265	0.000	0.00%	0.38	12.91	3.8%	106	5%	-2%	0.03	0.11	3.0%	2.2%	0.336	0.235	0.29%
Kuwait Real Estate	0.135	0.001	0.75%	0.93	16.88	0.3%	119	-6%	24%	0.23	1.76	5.5%	2.2%	0.146	0.072	0.33%
United Real Estate	0.065	-0.004	-5.95%	0.37	-9.64	0.0%	70	12%	38%	0.05	0.72	-3.9%	-1.2%	0.070	0.041	0.19%

# DAILY MARKET COVERAGE REPORT

NIC MENA SECURITIES - RESEARCH AND STUDIES DEP



Real estate Company	Price			Valuation Multiples			MKT Cap	Price Performance		Trading Indicators		ROE	ROA	52 Week (KD)		MKT Cap
	Close (KD)	Day Δ	Day % Δ	PBV(X)	PE(X)	DY%	Mn KD	MTD(%)	YTD (%)	Value (Mn KD)	(Mn Shrs)	(%)	(%)	High	Low	%
First Dubai for Real Estate Development	0.072	-0.002	-2.43%	0.97	79.18	0.5%	72	10%	76%	0.04	0.60	1.2%	1.0%	0.078	0.031	0.20%
Al Mazaya Holding	0.075	0.000	0.54%	0.59	-5.38	0.1%	47	1%	31%	0.22	2.97	-11.0%	-3.8%	0.078	0.047	0.13%
Ajial Real Estate Entertainment	0.250	-0.005	-1.96%	0.39	24.16	0.0%	48	12%	37%	0.11	0.47	1.6%	1.4%	0.260	0.124	0.13%
Injazzat Real Estate Development	0.079	-0.003	-3.66%	0.51	-3.78	8.8%	26	9%	6%	0.04	0.44	-13.4%	-7.0%	0.087	0.063	0.07%
Munshaat Real Estate Projects	0.096	-0.020	-17.50%	0.65	35.27	2.2%	31	24%	36%	0.00	0.02	1.8%	0.7%	0.121	0.045	0.08%
Aayan Real Estate	0.105	-0.009	-7.89%	0.62	20.55	4.5%	44	4%	81%	0.88	8.20	3.0%	1.9%	0.116	0.048	0.12%
Al Argan International Real Estate	0.106	0.004	3.92%	0.31	34.36	4.6%	27	-2%	-4%	0.00	0.00	0.9%	0.3%	0.112	0.071	0.07%
Al-Enmaa Real Estate	0.078	-0.001	-0.64%	0.78	20.64	0.0%	35	13%	62%	0.06	0.71	3.8%	2.4%	0.085	0.037	0.10%
Ream Real Estate	0.090	0.000	0.00%	0.69	-3.65	2.4%	10	0%	0%	0.00	0.00	-19.0%	-10.1%	0.204	0.060	0.03%
Arkan Al Kuwait Real Estate	0.110	0.000	0.00%	0.78	11.92	7.1%	28	5%	30%	0.01	0.12	6.6%	3.5%	0.143	0.078	0.08%
Kuwait Business Town Real Estate	0.086	0.001	1.06%	0.79	21.96	0.1%	54	15%	118%	0.13	1.50	3.6%	2.7%	0.088	0.022	0.15%
Dalqan Real Estate	0.274	0.000	0.00%	2.51	50.82	0.0%	17	0%	0%	0.00	0.00	4.9%	4.9%	0.318	0.274	0.05%
Sokouk Holding	0.023	0.000	0.00%	0.29	-3.89	0.0%	13	0%	0%	0.00	0.00	-7.4%	-4.7%	0.031	0.020	0.04%
Tijara and Realestate Investment	0.054	0.000	-0.37%	0.51	14.21	3.6%	20	6%	29%	0.12	2.19	3.6%	1.9%	0.058	0.035	0.05%
Al-Arabiya Real Estate	0.038	0.000	-0.78%	0.33	11.52	1.6%	19	7%	48%	0.07	1.78	2.9%	1.1%	0.040	0.021	0.05%
Aqar Real Estate Investments	0.070	0.001	1.60%	0.51	5.84	7.1%	15	1%	19%	0.40	5.64	8.7%	7.3%	0.077	0.056	0.04%
Mashaer Holding	0.078	-0.001	-0.64%	0.59	8.29	0.0%	14	12%	33%	0.07	0.87	7.1%	5.0%	0.083	0.052	0.04%
Investors Holding Group	0.017	0.002	13.73%	0.88	-0.83	0.0%	11	14%	-1%	1.51	87.60	-106.5%	-57.2%	0.032	0.011	0.03%
Dar Al Thuraya Real Estate	0.077	0.000	-0.26%	0.73	20.22	0.0%	11	32%	21%	0.00	0.02	3.6%	3.6%	0.190	0.046	0.03%
Osos Holding Group	0.095	0.000	0.00%	0.76	7.17	10.0%	10	-1%	6%	0.00	0.00	10.5%	7.0%	0.105	0.081	0.03%
Al Massaleh Real Estate	0.056	0.001	2.55%	0.63	-7.86	0.0%	13	9%	65%	0.01	0.12	-8.1%	-1.9%	0.085	0.026	0.04%
Kuwait Remal Real Estate	0.022	0.000	-1.34%	0.33	-3.04	0.0%	7	8%	9%	0.04	1.89	-11.0%	-3.9%	0.028	0.013	0.02%
Kuwait Real Estate Holding	0.041	-0.006	-12.79%	0.06	1.09	4.3%	8	21%	64%	0.09	2.28	5.5%	2.2%	0.049	0.021	0.02%
Taameer Real Estate Investment	0.033	-0.001	-1.81%	0.48	-6.88	0.0%	7	-4%	63%	0.11	3.41	-7.0%	-4.5%	0.039	0.015	0.02%
Sanam Real Estate	0.055	0.000	0.00%	0.70	74.48	0.0%	7	-4%	59%	0.00	0.00	0.9%	0.9%	0.060	0.027	0.02%
Mena Real Estate	0.045	0.000	0.67%	0.31	-99.78	0.0%	6	8%	61%	0.03	0.60	-0.3%	-0.2%	0.049	0.023	0.02%
Al Masaken International Real Estate Developr	0.043	0.001	1.42%	0.47	51.69	0.4%	4	16%	73%	0.02	0.41	0.9%	0.4%	0.045	0.021	0.01%
Real Estate Trade Centers	0.057	-0.002	-3.23%	0.31	325.67	0.0%	7	6%	107%	0.00	0.02	0.1%	0.1%	0.069	0.024	0.02%
Ajwan Gulf Real Estate	0.011	0.000	0.00%	0.19	-7.68	0.0%	2	0%	0%	0.00	0.00	-2.5%	-2.2%	0.013	0.010	0.01%
Al Mudon International Real Estate	0.021	0.000	0.00%	0.16	-10.65	0.0%	2	0%	14%	0.00	0.00	-1.5%	-1.4%	0.027	0.016	0.01%
<b>Total Real Estate - 37 Companies</b>				<b>0.84</b>	<b>24.84</b>	<b>1.9%</b>	<b>2,519</b>			<b>6.61</b>	<b>141.24</b>	<b>3.37%</b>	<b>3.29%</b>			<b>6.92%</b>

# DAILY MARKET COVERAGE REPORT

NIC MENA SECURITIES - RESEARCH AND STUDIES DEP



Technology	Price			Valuation Multiples			MKT Cap	Price Performance		Trading Indicators		ROE	ROA	52 Week (KD)		MKT Cap
	Company	Close (KD)	Day Δ	Day % Δ	PBV(X)	PE(X)		DY%	Mn KD	MTD(%)	YTD (%)			Value (Mn KD)	(Mn Shrs)	
Automated Systems	0.102	0.003	3.03%	0.80	-98.94	3.9%	10	-5%	48%	0.00	0.00	-0.8%	-0.7%	0.110	0.056	0.03%
<b>Total Technology - 1 Companies</b>				<b>0.80</b>	<b>-98.94</b>	<b>3.9%</b>	<b>10</b>			<b>0.00</b>	<b>0.00</b>	<b>-0.81%</b>	<b>-0.73%</b>			<b>0.03%</b>

Telecom	Price			Valuation Multiples			MKT Cap	Price Performance		Trading Indicators		ROE	ROA	52 Week (KD)		MKT Cap
	Company	Close (KD)	Day Δ	Day % Δ	PBV(X)	PE(X)		DY%	Mn KD	MTD(%)	YTD (%)			Value (Mn KD)	(Mn Shrs)	
Mobile Telecommunications	0.602	0.002	0.33%	2.01	12.01	5.2%	2,605	0%	-1%	2.36	3.93	16.7%	4.6%	0.641	0.503	7.16%
Kuwait Telecommunications	0.885	0.003	0.34%	2.05	10.14	4.0%	442	-1%	4%	0.17	0.20	20.2%	11.1%	0.970	0.815	1.21%
National Mobile Telecommunications	0.640	-0.003	-0.47%	0.56	10.65	10.1%	321	0%	2%	0.00	0.00	5.3%	2.4%	0.711	0.550	0.88%
AAN Digital Services	0.013	0.000	-1.55%	0.38	41.42	0.0%	11	9%	2%	0.14	10.96	0.9%	0.7%	0.014	0.010	0.03%
Hayat Communications	0.074	0.002	3.35%	0.63	31.23	0.0%	6	5%	32%	0.04	0.50	2.0%	0.8%	0.087	0.041	0.02%
<b>Telecom - 5 Companies</b>				<b>1.59</b>	<b>11.63</b>	<b>5.5%</b>	<b>3,385</b>			<b>2.72</b>	<b>15.59</b>	<b>13.70%</b>	<b>7.86%</b>			<b>9.30%</b>

Utilities	Price			Valuation Multiples			MKT Cap	Price Performance		Trading Indicators		ROE	ROA	52 Week (KD)		MKT Cap
	Company	Close (KD)	Day Δ	Day % Δ	PBV(X)	PE(X)		DY%	Mn KD	MTD(%)	YTD (%)			Value (Mn KD)	(Mn Shrs)	
Shamal Az-Zour Al-Oula Power & Water	0.253	-0.001	-0.39%	3.63	22.62	0.0%	278	-1%	-9%	0.21	0.83	16.1%	2.3%	0.500	0.245	0.76%
<b>Total Utilities - 1 Companies</b>				<b>3.63</b>	<b>22.62</b>	<b>0.0%</b>	<b>278</b>			<b>0.21</b>	<b>0.83</b>	<b>16.06%</b>	<b>2.26%</b>			<b>0.76%</b>

<b>Total Market 165 Companies</b>				<b>1.46</b>	<b>17.36</b>	<b>3.34%</b>	<b>36,386</b>			<b>55.91</b>	<b>489.72</b>	<b>8.42%</b>	<b>2.78%</b>			<b>100%</b>
-----------------------------------	--	--	--	-------------	--------------	--------------	---------------	--	--	--------------	---------------	--------------	--------------	--	--	-------------

## End of Report

The information contained in this document is proprietary to NIC and is for use only by the persons to whom it is issued. This document is confidential and may not be distributed either in part or in whole without the express agreement of NIC. It is intended solely for the use of the individual or entity to whom it is addressed and others authorized to receive it.

Note : ROE and ROA is calculated based on LFY net profit & shareholders' equity and LFY Operating Profits & Total Assets

Sources : National Investments Company Research and Studies Departments, Boursa, Refinitiv.



شركة الاستثمار الوطنية  
NATIONAL INVESTMENTS COMPANY

Sharq, Al Mutanabi Street, Khaleejia Tower | P.O. Box 25667, Safat 13117, Kuwait

T.: +965 2226 6666 | Fax: +965 2226 6793 | [www.nic.com.kw](http://www.nic.com.kw)