

شركة الاستثمارات الوطنية
NATIONAL INVESTMENTS COMPANY

Bursa Kuwait – Daily Market Report
MENA Securities – Research & Studies Dep.

18 April 2021

DAILY MARKET COVERAGE REPORT

NIC MENA SECURITIES - RESEARCH AND STUDIES DEP



Index	Close	DTD Chg Net	DTD (%)	YTD (%)	52W High	52W Low	MKT CAP Bn (KD)	PBV (X)	PE (X)	DY (%)
All Share Index	5,948.51	-5.07	-0.09%	7.26%	5,986.64	4,668.63	34.58	1.39	16.64	3.51%
Premier Index	6,519.72	-10.32	-0.16%	7.75%	6,580.72	4,983.09	26.31	1.77	15.27	3.29%
Main Index	4,812.44	7.08	0.15%	5.71%	4,820.57	4,001.07	8.27	0.82	23.34	4.21%
NIC 50 Index	7,247.24	-8.22	-0.11%	8.37%	7,295.06	5,536.95	28.98	1.63	16.02	3.36%

Index	Value Mn(KD)	Volume (Mn share)
All Share Index	33.52	309.40
Premier Index	15.82	43.80
Main Index	17.70	265.59
NIC 50 Index	24.91	154.31

Market Breadth	UP ↑	Down ↓	No Chg ↔
All Share Index	71	47	50
Premier Index	9	12	4
Main Index	62	35	46
NIC 50 Index	25	19	6

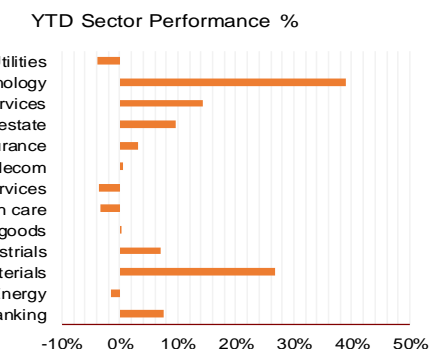
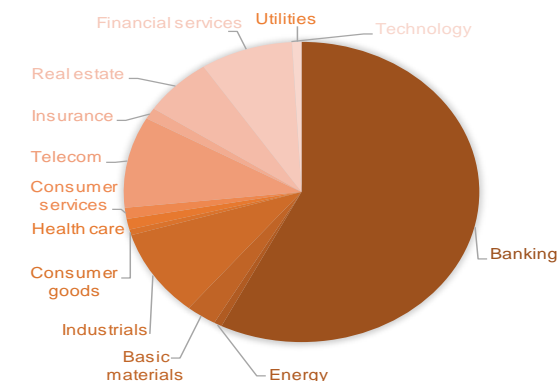
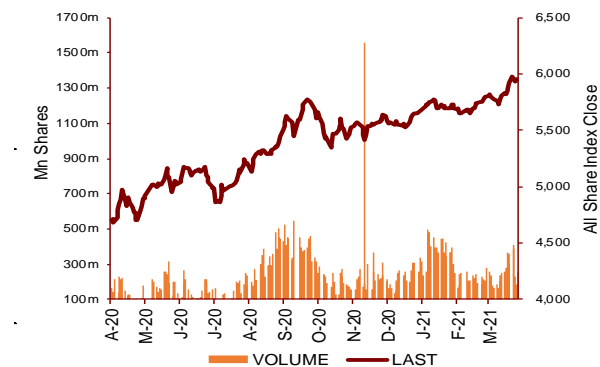
Today's Top 5 Gainer %	Close KD	Value KD	DTD (%)
Alrai Media Group	0.030	331	21.22%
Jiyad Holding	0.041	30,792	9.33%
IFA Hotels and Resorts	0.043	418,052	8.97%
Manazel Holding	0.047	810,363	8.74%
Sanam Real Estate	0.045	7,230	8.70%

Today's Top 5 Loser %	Close KD	Value KD	DTD (%)
Amwal International Investr	0.017	1,390	-15.23%
Warba Capital Holding	0.060	11,305	-9.76%
Kuwait Insurance	0.389	3,579	-9.53%
Kuwait Hotels	0.056	7,410	-5.57%
Injazzat Real Estate Devel	0.071	785	-4.80%

Today's Top 5 by Value	Close KD	Trade Val Mn(KD)	DTD (%)
Kuwait Finance House	0.720	2.71	-0.28%
National Bank of Kuwait	0.826	2.08	-0.48%
Aayan Real Estate	0.102	2.01	8.28%
Gulf Bank	0.213	1.90	-0.47%
Commercial Real Estate	0.096	1.58	-1.73%

Top 5 by Volume	Close KD	Trade Vol Mn(Shrs)	DTD (%)
Bayan Investment	0.038	35.52	4.71%
First Investment	0.076	20.89	4.52%
Aayan Real Estate	0.102	20.10	8.28%
Manazel Holding	0.047	17.62	8.74%
Commercial Real Estate	0.096	16.40	-1.73%

Sector	Close	DTD Chg Net	DTD (%)	YTD (%)	52W High	52W Low	MKT CAP Bn (KD)	PBV (X)	PE (X)	DY (%)
Banking	1,356.21	-3.330	-0.24%	7.4%	1,370.7	1,045.2	19.86	1.80	16.55	3.2%
Energy	1,256.90	1.580	0.13%	-1.6%	1,400.3	1,005.2	0.25	0.91	29.42	4.8%
Basic materials	1,137.94	4.260	0.38%	26.6%	1,149.8	643.5	0.96	1.37	20.92	5.3%
Industrials	952.53	4.550	0.48%	6.9%	959.9	671.7	3.26	1.06	15.37	4.2%
Consumer goods	818.89	6.740	0.83%	0.0%	855.2	674.8	0.21	1.47	31.40	2.4%
Health care	799.77	0.030	0.00%	-3.3%	840.7	798.4	0.40	4.04	46.90	1.0%
Consumer services	719.02	-2.430	-0.34%	-3.7%	810.7	688.7	0.41	0.94	39.22	4.3%
Telecom	1,109.56	-0.090	-0.01%	0.7%	1,179.6	900.3	3.40	1.60	11.68	5.4%
Insurance	1,191.85	-27.350	-2.24%	3.1%	1,398.2	929.8	0.42	0.89	10.09	4.9%
Real estate	1,043.23	-5.070	-0.48%	9.5%	1,057.0	778.7	2.19	0.72	25.55	2.2%
Financial services	1,062.03	6.820	0.65%	14.2%	1,057.1	801.4	2.91	0.83	18.85	3.6%
Technology	698.40	8.000	1.16%	38.9%	763.9	404.5	0.01	0.75	-93.12	4.2%
Utilities	700.00	-2.630	-0.37%	-4.0%	1,042.1	644.7	0.29	3.82	23.79	0.0%
	5,948.51	-5.07	-0.09%	7.3%	5,986.6	4,668.6	34.58	1.39	16.64	3.51%



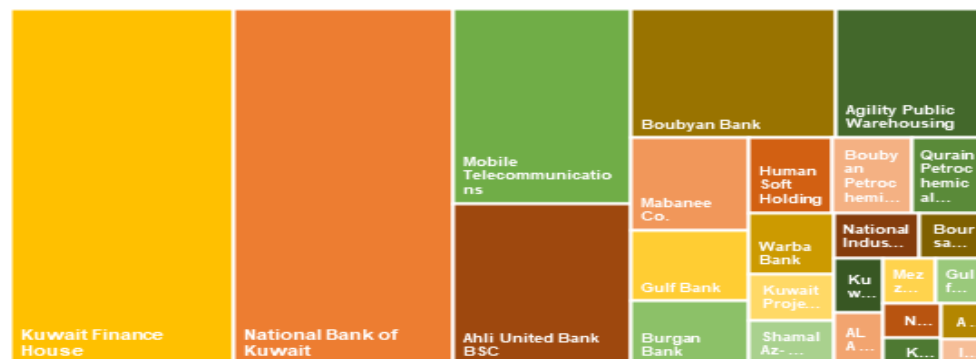
DAILY MARKET COVERAGE REPORT

NIC MENA SECURITIES - RESEARCH AND STUDIES DEP

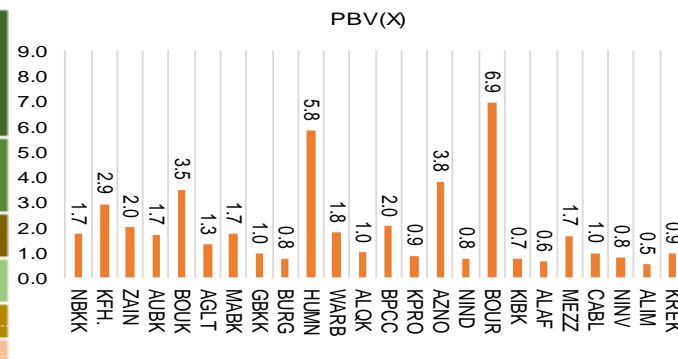


Premier Market	Price			Valuation Multiples			MKT Cap	Price Performance		Trading Indicators		ROE	ROA	52 Week (KD)		MKT Cap
	Close (KD)	Day Δ	Day % Δ	PBV(X)	PE(X)	DY%	Mn KD	MTD(%)	YTD (%)	Value (Mn KD)	(Mn Shrs)	(%)	(%)	High	Low	%
National Bank of Kuwait	0.826	-0.004	-0.48%	1.73	14.81	3.6%	5,941	2%	3%	2.08	2.51	11.7%	1.4%	0.871	0.667	22.58%
Kuwait Finance House	0.720	-0.002	-0.28%	2.93	24.03	2.1%	6,031	3%	17%	2.71	3.77	12.2%	1.3%	0.740	0.501	22.92%
Mobile Telecommunications	0.603	0.000	0.00%	2.01	12.03	5.2%	2,609	0%	0%	0.59	0.98	16.7%	4.6%	0.641	0.476	9.92%
Ahli United Bank BSC	0.214	-0.001	-0.47%	1.69	9.90	5.4%	2,169	5%	-1%	1.41	6.56	17.1%	1.8%	0.247	0.152	8.24%
Boubyan Bank	0.630	0.003	0.48%	3.48	31.98	1.0%	2,003	9%	16%	1.32	2.11	10.9%	1.2%	0.635	0.446	7.61%
Agility Public Warehousing	0.758	0.004	0.53%	1.32	16.72	2.4%	1,450	4%	12%	0.55	0.72	7.9%	4.2%	0.770	0.472	5.51%
Mabane Co.	0.706	-0.009	-1.26%	1.75	14.66	1.4%	827	3%	14%	0.12	0.17	11.9%	5.8%	0.730	0.493	3.14%
Gulf Bank	0.213	-0.001	-0.47%	0.96	10.03	4.5%	639	-3%	-3%	1.90	8.95	9.6%	1.0%	0.245	0.187	2.43%
Burgan Bank	0.222	0.001	0.45%	0.77	6.87	5.1%	582	1%	4%	0.50	2.25	11.3%	1.2%	0.230	0.175	2.21%
Human Soft Holding	3.847	0.015	0.39%	5.82	13.05	4.8%	468	4%	1%	1.04	0.27	44.6%	30.3%	4.030	2.486	1.78%
Warba Bank	0.246	0.000	0.00%	1.78	23.43	0.0%	387	4%	4%	0.34	1.38	7.6%	0.5%	0.278	0.176	1.47%
Qurain Petrochemical Industries	0.408	0.004	0.99%	0.99	14.76	3.8%	417	3%	21%	0.13	0.31	6.7%	3.6%	0.409	0.207	1.58%
Boubyan Petrochemical	0.903	-0.001	-0.11%	2.04	38.52	5.7%	455	7%	41%	0.17	0.19	5.3%	2.1%	0.934	0.465	1.73%
Kuwait Projects Company Holding	0.162	-0.001	-0.61%	0.87	9.78	5.7%	294	-1%	2%	0.18	1.11	8.9%	0.3%	0.181	0.147	1.12%
Shamal Az-Zour Al-Oula Power & Water	0.266	-0.001	-0.37%	3.82	23.79	0.0%	293	-1%	-4%	0.64	2.41	16.1%	2.3%	0.500	0.245	1.11%
National Industries Group Holding	0.208	0.004	1.96%	0.77	6.24	5.3%	289	11%	18%	0.66	3.22	12.3%	3.7%	0.208	0.147	1.10%
Boursa Kuwait Securities Co	1.109	-0.007	-0.63%	6.94	23.21	0.0%	223	-2%	1%	0.31	0.28	29.9%	26.5%	1.210	0.990	0.85%
Kuwait International Bank	0.205	-0.001	-0.49%	0.74	12.19	4.9%	209	3%	-1%	0.21	1.04	6.1%	0.6%	0.226	0.162	0.79%
ALAFCO Aviation Lease and Finance	0.210	0.001	0.48%	0.63	11.30	4.8%	200	3%	-3%	0.11	0.55	5.5%	1.4%	0.239	0.147	0.76%
Mezzan Holding	0.577	-0.001	-0.17%	1.66	31.18	2.9%	176	2%	-5%	0.03	0.06	5.3%	2.2%	0.665	0.551	0.67%
Gulf Cable and Electrical Industries	0.820	-0.002	-0.24%	0.98	40.50	3.4%	171	-4%	9%	0.05	0.06	2.4%	2.2%	0.888	0.460	0.65%
National Investments	0.185	0.002	1.09%	0.82	13.76	4.4%	148	11%	37%	0.24	1.30	5.9%	5.0%	0.186	0.080	0.56%
Alimtiq Investment Group	0.114	0.000	0.00%	0.54	5.94	7.0%	117	5%	2%	0.06	0.53	9.1%	5.2%	0.121	0.073	0.45%
Kuwait Real Estate	0.138	0.000	0.00%	0.94	17.15	0.3%	121	4%	27%	0.41	2.97	5.5%	2.2%	0.145	0.071	0.46%
Integrated Holding	0.414	0.001	0.24%	1.33	11.53	9.7%	91	0%	13%	0.05	0.12	11.5%	8.5%	0.463	0.342	0.35%
Total		-10.32	-0.16%	1.77	15.27	3.29%	26,310	3.1%	7.7%	15.82	43.80	11.58%	1.58%			100%

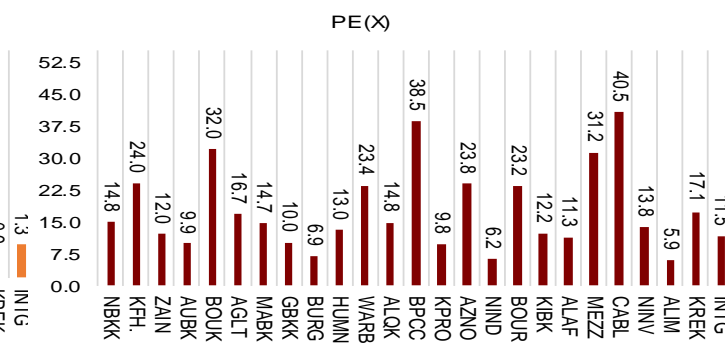
Market Capitalization



Price to Book Value

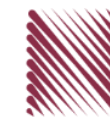


Price to Earning Value



DAILY MARKET COVERAGE REPORT

NIC MENA SECURITIES - RESEARCH AND STUDIES DEP



Premier Market	Price			Valuation Multiples			MKT Cap	Price Performance		ROE	ROA
Company	Close (KD)	Day Δ	Day % Δ	PBV(X)	PE(X)	DY%	Mn KD	MTD(%)	YTD (%)	(%)	(%)
National Bank of Kuwait	0.826	-0.004	-0.48%	1.73	14.8	3.6%	5,941	2.4%	3.3%	11.7%	1.4%
Kuwait Finance House	0.720	-0.002	-0.28%	2.93	24.0	2.1%	6,031	3.1%	17.0%	12.2%	1.3%
Mobile Telecommunications	0.603	0.000	0.00%	2.01	12.0	5.2%	2,609	-0.3%	-0.5%	16.7%	4.6%
Ahli United Bank BSC	0.214	-0.001	-0.47%	1.69	9.9	5.4%	2,169	5.5%	-1.0%	17.1%	1.8%
Boubyan Bank	0.630	0.003	0.48%	3.48	32.0	1.0%	2,003	9.3%	16.5%	10.9%	1.2%
Agility Public Warehousing	0.758	0.004	0.53%	1.32	16.7	2.4%	1,450	4.4%	12.1%	7.9%	4.2%
Mabane Co.	0.706	-0.009	-1.26%	1.75	14.7	1.4%	827	3.1%	13.9%	11.9%	5.8%
Gulf Bank	0.213	-0.001	-0.47%	0.96	10.0	4.5%	639	-3.2%	-2.7%	9.6%	1.0%
Burgan Bank	0.222	0.001	0.45%	0.77	6.9	5.1%	582	0.9%	4.2%	11.3%	1.2%
Human Soft Holding	3.847	0.015	0.39%	5.82	13.0	4.8%	468	4.0%	1.3%	44.6%	30.3%
Warba Bank	0.246	0.000	0.00%	1.78	23.4	0.0%	387	3.8%	4.2%	7.6%	0.5%
Qurain Petrochemical Industries	0.408	0.004	0.99%	0.99	14.8	3.8%	417	3.3%	20.7%	6.7%	3.6%
Boubyan Petrochemical	0.903	-0.001	-0.11%	2.04	38.5	5.7%	455	6.6%	41.1%	5.3%	2.1%
Kuwait Projects Company Holding	0.162	-0.001	-0.61%	0.87	9.8	5.7%	294	-0.6%	1.9%	8.9%	0.3%
Shamal Az-Zour Al-Oula Power & Water	0.266	-0.001	-0.37%	3.82	23.8	0.0%	293	-0.7%	-4.0%	16.1%	2.3%
National Industries Group Holding	0.208	0.004	1.96%	0.77	6.2	5.3%	289	11.2%	18.2%	12.3%	3.7%
Boursa Kuwait Securities Co	1.109	-0.007	-0.63%	6.94	23.2	0.0%	223	-2.0%	0.8%	29.9%	26.5%
Kuwait International Bank	0.205	-0.001	-0.49%	0.74	12.2	4.9%	209	2.5%	-1.4%	6.1%	0.6%
ALAFCO Aviation Lease and Finance	0.210	0.001	0.48%	0.63	11.3	4.8%	200	2.9%	-2.8%	5.5%	1.4%
Mezzan Holding	0.577	-0.001	-0.17%	1.66	31.2	2.9%	176	1.9%	-5.1%	5.3%	2.2%
Gulf Cable and Electrical Industries	0.820	-0.002	-0.24%	0.98	40.5	3.4%	171	-4.1%	8.6%	2.4%	2.2%
National Investments	0.185	0.002	1.09%	0.82	13.8	4.4%	148	10.8%	37.0%	5.9%	5.0%
Alimtiq Investment Group	0.114	0.000	0.00%	0.54	5.9	7.0%	117	4.6%	1.8%	9.1%	5.2%
Kuwait Real Estate	0.138	0.000	0.00%	0.94	17.1	0.3%	121	3.8%	26.6%	5.5%	2.2%
Integrated Holding	0.414	0.001	0.24%	1.33	11.5	9.7%	91	0.0%	13.1%	11.5%	8.5%
Total		-10.32	-0.16%	1.77	15.27	3.29%	26,310	3.1%	7.7%	11.58%	1.58%

Premier Market	Price			Moving Average		RSI	MKT Cap	Price Performance		52 Week (KD)	
Discription	Close (KD)	Day Δ	Day % Δ	50 Day	200 Day	14 Day	Mn KD	MTD(%)	YTD (%)	High	Low
Premier Index	6,520	-10.32	-0.16%	6,305	6,047	73	26,310	3.1%	7.8%	6,581	4,983

Top 5 Performrs (Today's Price Change)

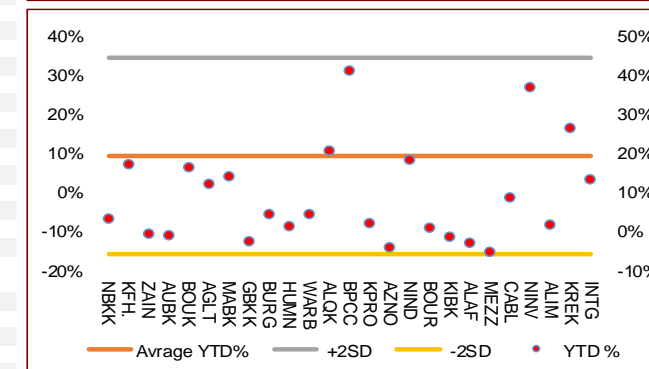
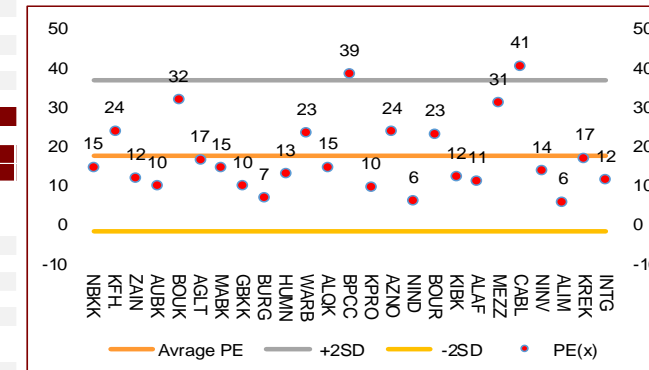
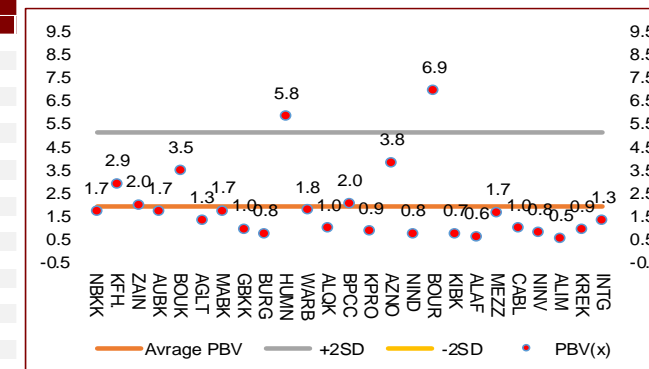
National Industries Group Holding	0.208	0.004	1.96%	0.192	0.180	96	289	11.2%	18.2%	0.208	0.147
National Investments	0.185	0.002	1.09%	0.169	0.138	78	148	10.8%	37.0%	0.186	0.080
Qurain Petrochemical Industries	0.408	0.004	0.99%	0.380	0.324	83	417	3.3%	20.7%	0.409	0.207
Agility Public Warehousing	0.758	0.004	0.53%	0.721	0.681	76	1,450	4.4%	12.1%	0.770	0.472
Boubyan Bank	0.630	0.003	0.48%	0.563	0.554	88	2,003	9.3%	16.5%	0.635	0.446

Middel Performrs (Today's Price Change)

ALAFCO Aviation Lease and Finance	0.210	0.001	0.48%	0.207	0.184	65	200	2.9%	-2.8%	0.239	0.147
Burgan Bank	0.222	0.001	0.45%	0.222	0.209	57	582	0.9%	4.2%	0.230	0.175
Human Soft Holding	3.847	0.015	0.39%	3.754	3.251	73	468	4.0%	1.3%	4.030	2.486
Integrated Holding	0.414	0.001	0.24%	0.408	0.383	66	91	0.0%	13.1%	0.463	0.342
Mobile Telecommunications	0.603	0.000	0.00%	0.620	0.600	23	2,609	-0.3%	-0.5%	0.641	0.476
Warba Bank	0.246	0.000	0.00%	0.238	0.231	74	387	3.8%	4.2%	0.278	0.176
Alimtiq Investment Group	0.114	0.000	0.00%	0.112	0.102	75	117	4.6%	1.8%	0.121	0.073
Kuwait Real Estate	0.138	0.000	0.00%	0.127	0.105	70	121	3.8%	26.6%	0.145	0.071
Boubyan Petrochemical	0.903	-0.001	-0.11%	0.797	0.638	74	455	6.6%	41.1%	0.934	0.465
Mezzan Holding	0.577	-0.001	-0.17%	0.100	0.100	59	176	1.9%	-5.1%	1.210	0.996
Gulf Cable and Electrical Industries	0.820	-0.002	-0.24%	0.840	0.722	25	171	-4.1%	8.6%	0.888	0.460
Kuwait Finance House	0.720	-0.002	-0.28%	0.682	0.618	68	6,031	3.1%	17.0%	0.740	0.501
Shamal Az-Zour Al-Oula Power & Water	0.266	-0.001	-0.37%	0.262	0.247	68	293	-0.7%	-4.0%	0.500	0.245
Ahli United Bank BSC	0.214	-0.001	-0.47%	0.212	0.213	65	2,169	5.5%	-1.0%	0.247	0.152
Gulf Bank	0.213	-0.001	-0.47%	0.218	0.217	31	639	-3.2%	-2.7%	0.245	0.187

Bottom 5 Performrs (Today's Price Change)

National Bank of Kuwait	0.826	-0.004	-0.48%	0.808	0.805	75	5,941	2.4%	3.3%	0.871	0.667
Kuwait International Bank	0.205	-0.001	-0.49%	0.203	0.197	67	209	2.5%	-1.4%	0.226	0.162
Kuwait Projects Company Holding	0.162	-0.001	-0.61%	0.159	0.159	64	294	-0.6%	1.9%	0.181	0.147
Boursa Kuwait Securities Co	1.109	-0.007	-0.63%	1.144	0.834	40	223	-2.0%	0.8%	1.210	0.990
Mabane Co.	0.706	-0.009	-1.26%	0.675	0.642	64	827	3.1%	13.9%	0.730	0.493



DAILY MARKET COVERAGE REPORT

NIC MENA SECURITIES - RESEARCH AND STUDIES DEP



Banking Sector		Price			Valuation Multiples			MKT Cap	Price Performance		Trading Indicators		ROE	ROA	52 Week (KD)		MKT Cap
Company	Close (KD)	Day Δ	Day % Δ	PBV(X)	PE(X)	DY%	Mn KD	MTD(%)	YTD (%)	Value (Mn KD)	(Mn Shrs)	(%)	(%)	High	Low	%	
National Bank of Kuwait	0.826	-0.004	-0.48%	1.73	14.81	3.6%	5,941	2%	3%	2.08	2.51	11.7%	1.4%	0.871	0.667	17.18%	
Kuwait Finance House	0.720	-0.002	-0.28%	2.93	24.03	2.1%	6,031	3%	17%	2.71	3.77	12.2%	1.3%	0.740	0.501	17.44%	
Ahli United Bank BSC	0.214	-0.001	-0.47%	1.69	9.90	5.4%	2,169	5%	-1%	1.41	6.56	17.1%	1.8%	0.247	0.152	6.27%	
Boubyan Bank	0.630	0.003	0.48%	3.48	31.98	1.0%	2,003	9%	16%	1.32	2.11	10.9%	1.2%	0.635	0.446	5.79%	
Commercial Bank of Kuwait	0.500	0.000	0.00%	1.31	0.00	3.7%	962	0%	0%	0.00	0.00	0.0%	0.0%	0.605	0.465	2.78%	
Gulf Bank	0.213	-0.001	-0.47%	0.96	10.03	4.5%	639	-3%	-3%	1.90	8.95	9.6%	1.0%	0.245	0.187	1.85%	
Burgan Bank	0.222	0.001	0.45%	0.77	6.87	5.1%	582	1%	4%	0.50	2.25	11.3%	1.2%	0.230	0.175	1.68%	
Ahli United Bank	0.314	0.001	0.32%	1.34	11.13	4.3%	612	2%	9%	0.09	0.30	12.1%	1.3%	0.320	0.241	1.77%	
Warba Bank	0.246	0.000	0.00%	1.78	23.43	0.0%	387	4%	4%	0.34	1.38	7.6%	0.5%	0.278	0.176	1.12%	
Al Ahli Bank of Kuwait	0.200	-0.002	-0.99%	0.57	11.20	7.0%	321	-1%	-4%	0.00	0.01	5.1%	0.6%	0.220	0.156	0.93%	
Kuwait International Bank	0.205	-0.001	-0.49%	0.74	12.19	4.9%	209	3%	-1%	0.21	1.04	6.1%	0.6%	0.226	0.162	0.60%	
Total Banking Sector - 11 Companies				1.80	16.55	3.2%	19,856			10.57	28.87	10.90%	1.21%			57.43%	

Basic Materials		Price			Valuation Multiples			MKT Cap	Price Performance		Trading Indicators		ROE	ROA	52 Week (KD)		MKT Cap
Company	Close (KD)	Day Δ	Day % Δ	PBV(X)	PE(X)	DY%	Mn KD	MTD(%)	YTD (%)	Value (Mn KD)	(Mn Shrs)	(%)	(%)	High	Low	%	
Qurain Petrochemical Industries	0.408	0.004	0.99%	0.99	14.76	3.8%	417	3%	21%	0.13	0.31	6.7%	3.6%	0.409	0.207	1.21%	
Boubyan Petrochemical	0.903	-0.001	-0.11%	2.04	38.52	5.7%	455	7%	41%	0.17	0.19	5.3%	2.1%	0.934	0.465	1.32%	
Al Kout Industrial Projects	0.642	0.000	0.00%	2.09	13.53	7.8%	65	0%	-5%	0.00	0.00	15.4%	11.3%	0.850	0.628	0.19%	
Kuwait Foundry	0.274	0.000	0.00%	0.92	22.14	19.5%	20	-2%	2%	0.00	0.02	4.1%	3.8%	0.306	0.209	0.06%	
Total Basic Materials - 4 Companies				1.37	20.92	5.3%	957			0.30	0.51	6.57%	5.07%			2.77%	

Consumer Goods		Price			Valuation Multiples			MKT Cap	Price Performance		Trading Indicators		ROE	ROA	52 Week (KD)		MKT Cap
Company	Close (KD)	Day Δ	Day % Δ	PBV(X)	PE(X)	DY%	Mn KD	MTD(%)	YTD (%)	Value (Mn KD)	(Mn Shrs)	(%)	(%)	High	Low	%	
Mezzan Holding	0.577	-0.001	-0.17%	1.66	31.18	2.9%	176	2%	-5%	0.03	0.06	5.3%	2.2%	0.665	0.551	0.51%	
Livestock Transport and Trading	0.182	-0.002	-1.09%	0.95	32.44	0.1%	38	0%	3%	0.01	0.06	2.9%	2.0%	0.210	0.166	0.11%	
Total Consumer Goods - 2 Companies				1.47	31.40	2.4%	214			0.04	0.12	4.67%	3.71%			0.62%	

DAILY MARKET COVERAGE REPORT

NIC MENA SECURITIES - RESEARCH AND STUDIES DEP



Consumer Services																
Company	Price			Valuation Multiples			MKT Cap	Price Performance		Trading Indicators		ROE	ROA	52 Week (KD)		MKT Cap
	Close (KD)	Day Δ	Day % Δ	PBV(X)	PE(X)	DY%	Mn KD	MTD(%)	YTD (%)	Value (Mn KD)	(Mn Shrs)	(%)	(%)	High	Low	%
Jazeera Airways	0.620	-0.007	-1.12%	3.08	8.30	5.6%	124	-14%	-15%	0.29	0.47	37.1%	9.0%	0.750	0.515	0.36%
Kuwait National Cinema	0.732	0.000	0.00%	0.84	7.91	6.6%	68	2%	-2%	0.00	0.00	10.6%	7.2%	0.799	0.600	0.20%
Oula Fuel Marketing	0.122	0.001	0.83%	0.73	12.77	4.8%	49	3%	-1%	0.01	0.06	5.7%	3.2%	0.126	0.096	0.14%
Al Soor Fuel Marketing	0.120	0.001	0.84%	0.74	14.04	4.1%	49	1%	-2%	0.00	0.03	5.3%	3.7%	0.125	0.096	0.14%
Sultan Center Food Products	0.102	0.002	2.00%	0.63	12.83	0.0%	29	2%	2%	0.13	1.28	4.9%	0.7%	0.120	0.090	0.08%
Jiyad Holding	0.041	0.004	9.33%	0.37	8.18	0.0%	14	-11%	-7%	0.03	0.78	4.5%	2.8%	0.054	0.029	0.04%
IFA Hotels and Resorts	0.043	0.004	8.97%	1.58	-1.20	0.0%	27	21%	118%	0.42	9.90	-131.5%	-8.1%	0.044	0.016	0.08%
Kuwait Resorts	0.066	0.000	0.46%	0.47	12.33	0.0%	13	1%	4%	0.03	0.51	3.8%	3.2%	0.069	0.041	0.04%
Alrai Media Group	0.030	0.005	21.22%	0.30	-0.86	0.0%	3	-16%	-38%	0.00	0.01	-34.2%	-20.0%	0.091	0.023	0.01%
Future Kid Entertainment and Real Estate	0.082	0.000	0.00%	0.48	30.98	14.1%	9	0%	-4%	0.00	0.00	1.5%	0.9%	0.090	0.067	0.03%
Al Eid Food	0.193	-0.003	-1.53%	1.30	15.41	0.0%	23	4%	133%	0.05	0.24	8.4%	6.1%	0.200	0.051	0.07%
Kuwait Hotels	0.056	-0.003	-5.57%	0.79	-3.23	0.0%	3	-8%	-6%	0.01	0.14	-24.4%	-13.2%	0.111	0.050	0.01%
Palms Agro Production	0.067	0.000	0.00%	0.56	-46.88	15.0%	3	-5%	3%	0.00	0.00	-1.2%	-0.9%	0.080	0.052	0.01%
Total Consumer Services - 13 Companies				0.94	39.22	4.3%	415			0.97	13.43	2.40%	2.73%			1.20%

Financial Services																
Company	Price			Valuation Multiples			MKT Cap	Price Performance		Trading Indicators		ROE	ROA	52 Week (KD)		MKT Cap
	Close (KD)	Day Δ	Day % Δ	PBV(X)	PE(X)	DY%	Mn KD	MTD(%)	YTD (%)	Value (Mn KD)	(Mn Shrs)	(%)	(%)	High	Low	%
Egypt Kuwait Holding	0.359	0.000	0.00%	2.34	13.33	5.0%	405	10%	11%	0.00	0.00	17.6%	7.1%	0.436	0.288	1.17%
Kuwait Projects Company Holding	0.162	-0.001	-0.61%	0.87	9.78	5.7%	294	-1%	2%	0.18	1.11	8.9%	0.3%	0.181	0.147	0.85%
National Industries Group Holding	0.208	0.004	1.96%	0.77	6.24	5.3%	289	11%	18%	0.66	3.22	12.3%	3.7%	0.208	0.147	0.84%
Boursa Kuwait Securities Co	1.109	-0.007	-0.63%	6.94	23.21	0.0%	223	-2%	1%	0.31	0.28	29.9%	26.5%	1.210	0.990	0.64%
GFH Financial Group	0.054	0.000	-0.56%	0.60	7.47	5.2%	186	4%	14%	0.16	2.91	8.0%	1.3%	0.059	0.041	0.54%
National Investments	0.185	0.002	1.09%	0.82	13.76	4.4%	148	11%	37%	0.24	1.30	5.9%	5.0%	0.186	0.080	0.43%
Tamdeen Investment	0.206	-0.003	-1.44%	0.25	8.54	5.8%	70	-3%	-34%	0.00	0.01	3.0%	2.2%	0.371	0.199	0.20%
Alimtiq Investment Group	0.114	0.000	0.00%	0.54	5.94	7.0%	117	5%	2%	0.06	0.53	9.1%	5.2%	0.121	0.073	0.34%
Commercial Facilities	0.187	0.002	1.08%	0.58	7.20	9.0%	95	4%	-2%	0.03	0.14	8.0%	4.2%	0.223	0.161	0.27%
Aayan Leasing and Investment	0.148	0.007	4.96%	1.73	-8.12	1.2%	119	20%	61%	1.54	10.61	-21.4%	-4.9%	0.149	0.032	0.34%
Kuwait Investment	0.170	0.005	3.03%	0.74	5.32	5.9%	93	35%	39%	0.56	3.34	13.9%	6.0%	0.180	0.096	0.27%
Noor Financial Investment	0.234	0.004	1.74%	1.43	11.44	2.1%	92	23%	38%	0.11	0.47	12.5%	7.5%	0.247	0.086	0.27%
Arzan Financial Group for Financing and Invest	0.109	0.001	0.93%	0.87	77.95	0.0%	85	14%	95%	0.21	1.90	1.1%	0.7%	0.112	0.029	0.25%
Kuwait Financial Centre	0.088	0.000	0.34%	0.44	6.01	5.6%	42	0%	5%	0.04	0.50	7.3%	3.5%	0.097	0.070	0.12%
Gulf Investment House	0.128	0.000	0.00%	1.44	236.76	0.0%	52	25%	54%	0.17	1.29	0.6%	0.5%	0.143	0.041	0.15%
Al Bareeq Holding	0.091	0.000	0.00%	0.95	18.17	0.0%	40	-1%	39%	0.01	0.09	5.2%	5.0%	0.106	0.014	0.12%
Arabi Group Holdings	0.198	0.000	0.00%	1.07	-19.90	0.0%	33	0%	0%	0.00	0.00	-5.4%	-0.6%	0.198	0.198	0.09%

DAILY MARKET COVERAGE REPORT

NIC MENA SECURITIES - RESEARCH AND STUDIES DEP



Financial services Company	Price			Valuation Multiples			MKT Cap	Price Performance		Trading Indicators		ROE	ROA	52 Week (KD)		MKT Cap
	Close (KD)	Day Δ	Day % Δ	PBV(X)	PE(X)	DY%	Mn KD	MTD(%)	YTD (%)	Value (Mn KD)	(Mn Shrs)	(%)	(%)	High	Low	%
Kuwait and Middle East Financial Investment	0.137	0.001	0.74%	2.23	54.71	0.0%	36	-7%	12%	0.01	0.10	4.1%	3.2%	0.154	0.077	0.10%
Privatization Holding	0.043	0.000	0.94%	0.31	-38.68	0.0%	26	8%	7%	0.27	6.32	-0.8%	-0.5%	0.050	0.037	0.08%
Asiya Capital Investments	0.036	0.000	0.00%	0.38	18.40	0.1%	28	-1%	-3%	0.00	0.02	2.1%	2.0%	0.040	0.029	0.08%
Umm Al Qaiwain General Investment Co	0.075	0.000	0.00%	0.50	14.10	4.9%	27	-3%	0%	0.00	0.00	3.6%	3.3%	0.096	0.064	0.08%
Securities House	0.050	0.001	1.64%	0.68	-72.51	0.0%	28	11%	16%	0.38	7.59	-0.9%	-0.7%	0.051	0.030	0.08%
KAMCO Investment	0.085	-0.001	-0.58%	0.52	9.59	0.0%	29	10%	15%	0.13	1.53	5.4%	2.3%	0.088	0.060	0.08%
First Investment	0.076	0.003	4.52%	1.18	-1.04	0.0%	50	13%	22%	1.57	20.89	-113.6%	-62.0%	0.077	0.033	0.14%
Inovest BSC Public	0.088	0.000	0.45%	0.61	11.86	6.7%	26	6%	35%	0.44	5.00	5.2%	2.9%	0.090	0.044	0.08%
Coast Investment and Development	0.041	0.000	0.98%	0.44	41.26	0.0%	24	6%	-15%	0.02	0.52	1.1%	1.0%	0.049	0.028	0.07%
Al Madar Finance and Investment	0.099	0.000	0.41%	0.90	14.78	0.0%	20	3%	9%	0.10	1.01	6.1%	5.0%	0.105	0.062	0.06%
Bayan Investment	0.038	0.002	4.71%	0.38	-19.53	0.0%	14	8%	-9%	1.35	35.52	-1.9%	-0.8%	0.052	0.031	0.04%
Al Manar Financing and Leasing	0.064	0.000	-0.63%	0.58	16.39	0.8%	20	6%	28%	0.00	0.03	3.5%	2.7%	0.069	0.038	0.06%
Manazel Holding	0.047	0.004	8.74%	1.04	30.40	0.0%	20	26%	49%	0.81	17.62	3.4%	0.8%	0.047	0.025	0.06%
Kuwait Finance and Investment	0.110	-0.001	-0.90%	0.87	49.39	0.0%	34	76%	156%	0.21	1.90	1.8%	1.2%	0.112	0.038	0.10%
National International Holding	0.075	0.000	0.40%	0.40	9.06	3.9%	16	4%	-9%	0.00	0.02	4.4%	3.3%	0.089	0.052	0.05%
Osoul Investment	0.077	0.000	0.00%	0.56	6.21	0.0%	11	1%	-4%	0.00	0.00	9.0%	8.2%	0.121	0.072	0.03%
UniCap Investment and Finance	0.050	0.002	4.43%	0.47	-23.31	0.0%	11	32%	18%	0.07	1.44	-2.0%	-1.0%	0.050	0.035	0.03%
Amar Finance and Leasing	0.048	0.000	0.00%	0.54	40.27	0.0%	9	2%	-1%	0.00	0.00	1.3%	1.2%	0.056	0.039	0.03%
Gulf North Africa Holding	0.060	0.000	0.00%	0.79	76.92	0.0%	9	0%	-8%	0.00	0.00	1.0%	0.6%	0.065	0.052	0.03%
Al Salam Group Holding	0.024	0.000	1.27%	0.21	181.18	0.0%	6	-5%	-5%	0.04	1.83	0.1%	0.1%	0.032	0.018	0.02%
International Financial Advisors	0.111	0.003	2.78%	3.35	-1.50	0.6%	28	0%	86%	0.20	1.81	-222.8%	-19.3%	0.123	0.027	0.08%
Amwal International Investment	0.017	-0.003	-15.23%	0.31	6.17	0.0%	3	-12%	-50%	0.00	0.08	5.0%	2.6%	0.040	0.017	0.01%
Al Madina for Finance and Investment	0.016	0.000	0.00%	0.55	-3.06	0.0%	6	0%	3%	0.00	0.00	-17.9%	-7.7%	0.019	0.009	0.02%
Credit Rating and Collection	0.028	0.000	0.00%	0.87	-19.11	0.0%	5	0%	29%	0.00	0.00	-4.6%	-4.3%	0.035	0.018	0.01%
Ekttitab Holding	0.016	0.000	-1.23%	0.38	-11.27	0.0%	5	-2%	6%	0.00	0.05	-3.4%	-3.0%	0.020	0.010	0.01%
Kuwait Syrian Holding Co	0.027	0.000	0.00%	0.23	-13.79	0.0%	5	-8%	-15%	0.00	0.00	-1.7%	-1.1%	0.043	0.025	0.01%
Warba Capital Holding	0.060	-0.007	-9.76%	0.67	-9.55	0.0%	6	18%	24%	0.01	0.19	-7.0%	-6.2%	0.070	0.042	0.02%
National Consumer Holding	0.043	-0.001	-1.15%	0.48	211.54	0.0%	4	-4%	-12%	0.00	0.00	0.2%	0.2%	0.060	0.036	0.01%
Al Deera Holding	0.210	0.008	3.96%	4.25	-55.02	0.0%	19	57%	136%	0.01	0.03	-7.7%	-1.7%	0.245	0.077	0.06%
Al Mal Investment Company	0.006	0.000	0.00%	0.26	-0.55	0.0%	2	0%	0%	0.00	0.00	-47.6%	-23.3%	0.011	0.006	0.01%
Gulf Franchising Holding	0.060	0.000	0.00%	0.95	-2.62	0.0%	2	0%	1%	0.00	0.00	-36.2%	-10.8%	0.072	0.041	0.01%
Total Financial Services - 48 Companies				0.83	18.85	3.6%	2,912			9.91	131.18	4.43%	4.15%			8.42%

DAILY MARKET COVERAGE REPORT

NIC MENA SECURITIES - RESEARCH AND STUDIES DEP



Health Care	Price			Valuation Multiples			MKT Cap	Price Performance		Trading Indicators		ROE	ROA	52 Week (KD)		MKT Cap
Company	Close (KD)	Day Δ	Day % Δ	PBV(X)	PE(X)	DY%	Mn KD	MTD(%)	YTD (%)	Value (Mn KD)	(Mn Shrs)	(%)	(%)	High	Low	%
Al-Maidan Clinic for Oral Health Services	1.240	0.000	0.00%	8.03	48.56	0.6%	310	0%	0%	0.00	0.00	16.5%	10.9%	1.240	1.220	0.90%
Advanced Technology	0.520	0.000	0.00%	1.35	42.33	2.9%	78	-4%	-9%	0.00	0.00	3.2%	0.7%	0.700	0.520	0.23%
Yiaco Medical	0.500	0.001	0.20%	4.29	37.28	0.0%	9	-18%	-40%	0.00	0.00	11.5%	0.6%	1.000	0.460	0.02%
Total Health Care - 3 Companies				4.04	46.90	1.0%	397			0.00	0.00	8.61%	4.68%			1.15%

Industrials	Price			Valuation Multiples			MKT Cap	Price Performance		Trading Indicators		ROE	ROA	52 Week (KD)		MKT Cap
Company	Close (KD)	Day Δ	Day % Δ	PBV(X)	PE(X)	DY%	Mn KD	MTD(%)	YTD (%)	Value (Mn KD)	(Mn Shrs)	(%)	(%)	High	Low	%
Agility Public Warehousing	0.758	0.004	0.53%	1.32	16.72	2.4%	1,450	4%	12%	0.55	0.72	7.9%	4.2%	0.770	0.472	4.19%
Human Soft Holding	3.847	0.015	0.39%	5.82	13.05	4.8%	468	4%	1%	1.04	0.27	44.6%	30.3%	4.030	2.486	1.35%
ALAFCO Aviation Lease and Finance	0.210	0.001	0.48%	0.63	11.30	4.8%	200	3%	-3%	0.11	0.55	5.5%	1.4%	0.239	0.147	0.58%
Kuwait Cement	0.234	0.002	0.86%	0.80	41.53	6.3%	167	5%	1%	0.03	0.13	1.9%	1.3%	0.247	0.144	0.48%
Gulf Cable and Electrical Industries	0.820	-0.002	-0.24%	0.98	40.50	3.4%	171	-4%	9%	0.05	0.06	2.4%	2.2%	0.888	0.460	0.50%
Integrated Holding	0.414	0.001	0.24%	1.33	11.53	9.7%	91	0%	13%	0.05	0.12	11.5%	8.5%	0.463	0.342	0.26%
Kuwait Portland Cement	0.887	0.000	0.00%	1.19	11.71	11.1%	89	2%	13%	0.00	0.00	10.2%	8.2%	0.967	0.683	0.26%
Educational Holding Group	0.572	0.000	0.00%	2.02	11.08	4.3%	86	16%	20%	0.00	0.00	18.3%	16.7%	0.572	0.372	0.25%
United Projects for Aviation Services	0.210	0.002	0.96%	1.04	8.50	4.2%	79	7%	-28%	0.00	0.01	12.3%	7.8%	0.410	0.186	0.23%
Heavy Engineering Industries and Shipbuilding	0.427	-0.001	-0.23%	1.24	6.86	6.8%	77	1%	8%	0.17	0.40	18.0%	5.9%	0.465	0.328	0.22%
National Industries	0.150	0.000	0.00%	0.62	12.21	6.6%	52	-3%	-4%	0.00	0.00	5.1%	3.8%	0.173	0.143	0.15%
ACICO Industries	0.086	0.001	0.94%	0.28	11.14	5.8%	28	-3%	-5%	0.03	0.35	2.5%	0.6%	0.118	0.082	0.08%
Kuwait Company for Process Plant Constructi	0.566	0.003	0.53%	2.24	12.12	3.2%	60	5%	40%	0.01	0.03	18.5%	7.7%	0.584	0.225	0.17%
Ras Al Khaimah for White Cement and Constr	0.067	0.000	0.00%	0.53	20.56	8.2%	34	3%	3%	0.00	0.00	2.6%	2.0%	0.071	0.061	0.10%
Combined Group Contracting	0.243	-0.003	-1.22%	0.89	11.49	8.0%	42	5%	21%	0.19	0.80	7.7%	1.2%	0.251	0.138	0.12%
Sharjah Cement and Industrial Development	0.040	0.001	2.04%	0.20	24.00	13.1%	24	-5%	-5%	0.02	0.52	0.8%	0.6%	0.056	0.035	0.07%
KGL Logistics	0.029	0.001	4.78%	0.21	4.63	0.1%	22	2%	1%	0.09	3.21	4.6%	2.9%	0.034	0.023	0.06%
Kuwait and Gulf Link Transport	0.049	0.000	0.82%	0.20	14.82	0.0%	13	2%	-7%	0.03	0.57	1.4%	0.4%	0.061	0.042	0.04%
Shuaiba Industrial	0.180	0.005	2.86%	1.01	55.94	5.5%	18	0%	16%	0.00	0.01	1.8%	1.4%	0.180	0.122	0.05%
National Cleaning	0.048	0.000	0.84%	0.31	7.02	9.7%	11	1%	-10%	0.01	0.21	4.4%	1.5%	0.061	0.045	0.03%
Fujairah Cement Industries	0.032	0.001	3.90%	0.13	15.52	13.1%	11	5%	-6%	0.00	0.05	0.8%	0.4%	0.043	0.028	0.03%
Hilal Cement	0.081	0.000	0.00%	0.71	-6.66	18.5%	8	0%	-11%	0.00	0.00	-10.6%	-6.2%	0.126	0.063	0.02%
Mubarrad Holding	0.074	0.004	5.86%	0.59	11.95	6.3%	12	12%	4%	0.70	9.61	4.9%	4.1%	0.080	0.049	0.04%
Specialities Group Holding	0.078	0.001	0.64%	0.42	9.32	0.0%	12	5%	0%	0.01	0.11	4.5%	3.5%	0.090	0.050	0.04%
National Ranges	0.038	-0.001	-2.05%	0.70	-2.79	0.0%	11	32%	104%	0.00	0.10	-24.9%	-5.3%	0.040	0.009	0.03%
Salbookh Trading	0.038	0.000	0.53%	0.52	-2.22	0.0%	4	6%	1%	0.06	1.48	-23.2%	-15.9%	0.042	0.026	0.01%
Metal and Recycling	0.175	0.002	1.16%	1.46	-7.43	0.0%	16	39%	230%	0.01	0.06	-19.7%	-10.1%	0.175	0.032	0.05%
Equipment Holding	0.028	-0.001	-2.08%	0.33	-190.99	0.0%	2	1%	-5%	0.00	0.08	-0.2%	-0.1%	0.033	0.023	0.01%
Total Industrials - 28 Companies				1.06	15.37	4.2%	3,260			3.18	19.43	6.92%	5.16%			9.43%

DAILY MARKET COVERAGE REPORT

NIC MENA SECURITIES - RESEARCH AND STUDIES DEP



Insurance	Price			Valuation Multiples			MKT Cap	Price Performance		Trading Indicators		ROE	ROA	52 Week (KD)		MKT Cap
	Company	Close (KD)	Day Δ	Day % Δ	PBV(X)	PE(X)		DY%	Mn KD	MTD(%)	YTD (%)			Value (Mn KD)	(Mn Shrs)	
Gulf Insurance Group	0.624	0.004	0.65%	1.07	8.71	5.9%	116	-1%	-23%	0.01	0.01	12.3%	1.7%	0.900	0.542	0.34%
Al Ahleia Insurance	0.463	-0.015	-3.14%	0.87	9.33	7.2%	96	-10%	-1%	0.00	0.00	9.4%	3.3%	0.520	0.367	0.28%
Kuwait Insurance	0.389	-0.041	-9.53%	0.64	7.54	6.1%	72	-2%	1%	0.00	0.01	8.5%	4.6%	0.435	0.300	0.21%
Kuwait Reinsurance	0.386	0.000	0.00%	1.58	17.86	1.0%	84	12%	99%	0.00	0.00	8.9%	3.2%	0.527	0.158	0.24%
Bahrain Kuwait Insurance	0.191	0.000	0.00%	0.93	12.88	6.1%	29	0%	0%	0.00	0.00	7.2%	1.1%	0.191	0.191	0.08%
Warba Insurance	0.116	0.000	0.00%	0.51	16.47	0.0%	19	0%	38%	0.02	0.21	3.1%	1.0%	0.126	0.067	0.06%
First Takaful Insurance	0.049	0.000	0.00%	0.59	6.15	0.0%	5	3%	31%	0.00	0.00	9.6%	5.9%	0.058	0.029	0.01%
Wethaq Takaful Insurance	0.024	-0.001	-2.07%	0.22	-29.87	0.0%	3	12%	16%	0.02	0.75	-0.7%	-0.7%	0.035	0.018	0.01%
Total Insurance - 8 Companies				0.89	10.09	4.9%	424			0.05	0.98	8.86%	3.00%			1.23%

Energy	Price			Valuation Multiples			MKT Cap	Price Performance		Trading Indicators		ROE	ROA	52 Week (KD)		MKT Cap
	Company	Close (KD)	Day Δ	Day % Δ	PBV(X)	PE(X)		DY%	Mn KD	MTD(%)	YTD (%)			Value (Mn KD)	(Mn Shrs)	
National Petroleum Services	1.000	0.000	0.00%	2.38	8.53	7.0%	97	6%	-5%	0.00	0.00	27.9%	23.6%	1.200	0.855	0.28%
Independent Petroleum Group	0.490	0.000	0.00%	0.90	13.35	6.1%	89	2%	3%	0.00	0.00	6.8%	2.2%	0.500	0.375	0.26%
Burgan for Well Drilling Trading and Maintenanc	0.142	0.000	0.00%	0.51	14.42	0.0%	33	-9%	-8%	0.05	0.39	3.6%	1.1%	0.219	0.060	0.09%
Energy House Holding	0.027	0.000	1.12%	0.83	-3.70	0.0%	20	8%	-5%	0.00	0.00	-22.5%	-17.0%	0.033	0.014	0.06%
Gulf Petroleum Investment	0.019	0.000	-0.52%	0.21	-6.12	0.0%	9	2%	-2%	0.05	2.83	-3.4%	-2.3%	0.023	0.013	0.03%
Senergy Holding	0.032	0.001	2.26%	0.64	-1.33	0.0%	6	13%	50%	0.02	0.74	-47.9%	-30.4%	0.033	0.014	0.02%
Total Energy - 6 Companies				0.91	29.42	4.8%	253			0.13	3.96	3.10%	2.18%			0.73%

Real Estate	Price			Valuation Multiples			MKT Cap	Price Performance		Trading Indicators		ROE	ROA	52 Week (KD)		MKT Cap
	Company	Close (KD)	Day Δ	Day % Δ	PBV(X)	PE(X)		DY%	Mn KD	MTD(%)	YTD (%)			Value (Mn KD)	(Mn Shrs)	
Mabane Co.	0.706	-0.009	-1.26%	1.75	14.66	1.4%	827	3%	14%	0.12	0.17	11.9%	5.8%	0.730	0.493	2.39%
Salhia Real Estate	0.530	0.001	0.19%	1.61	12.23	3.7%	263	-4%	5%	0.03	0.06	13.2%	5.8%	0.599	0.339	0.76%
Commercial Real Estate	0.096	-0.002	-1.73%	0.57	11.61	6.1%	169	2%	-16%	1.58	16.40	5.0%	2.7%	0.129	0.087	0.49%
National Real Estate	0.095	0.001	1.39%	0.52	12.48	0.0%	143	5%	26%	0.67	7.03	4.2%	2.4%	0.099	0.059	0.41%
Tamdeen Real Estate	0.241	-0.002	-0.82%	0.35	11.74	4.2%	97	-2%	-11%	0.01	0.03	3.0%	2.2%	0.336	0.235	0.28%
Kuwait Real Estate	0.138	0.000	0.00%	0.94	17.15	0.3%	121	4%	27%	0.41	2.97	5.5%	2.2%	0.145	0.071	0.35%
United Real Estate	0.046	-0.001	-1.09%	0.26	-6.77	0.0%	49	-7%	-3%	0.01	0.16	-3.9%	-1.2%	0.058	0.041	0.14%
First Dubai for Real Estate Development	0.049	0.000	0.62%	0.66	53.74	0.8%	49	8%	20%	0.05	1.05	1.2%	1.0%	0.051	0.028	0.14%
Al Mazaya Holding	0.066	0.000	-0.46%	0.52	-4.70	0.1%	41	5%	15%	0.08	1.16	-11.0%	-3.8%	0.068	0.047	0.12%
Ajial Real Estate Entertainment	0.198	-0.003	-1.49%	0.31	19.13	0.0%	38	0%	8%	0.01	0.06	1.6%	1.4%	0.203	0.119	0.11%
Injazzat Real Estate Development	0.071	-0.004	-4.80%	0.46	-3.42	9.7%	24	-7%	-4%	0.00	0.01	-13.4%	-7.0%	0.087	0.063	0.07%
Munshaat Real Estate Projects	0.076	0.000	0.00%	0.52	28.01	2.8%	24	4%	8%	0.00	0.00	1.8%	0.7%	0.090	0.045	0.07%
Aayan Real Estate	0.102	0.008	8.28%	0.60	19.96	4.7%	42	46%	76%	2.01	20.10	3.0%	1.9%	0.106	0.048	0.12%
Al Argan International Real Estate	0.109	0.000	0.00%	0.32	35.33	4.5%	28	0%	-1%	0.00	0.00	0.9%	0.3%	0.111	0.066	0.08%
Al-Enmaa Real Estate	0.059	-0.002	-2.48%	0.59	15.60	0.0%	27	18%	22%	0.53	8.86	3.8%	2.4%	0.062	0.037	0.08%

DAILY MARKET COVERAGE REPORT

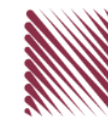
NIC MENA SECURITIES - RESEARCH AND STUDIES DEP



Real estate Company	Price			Valuation Multiples			MKT Cap	Price Performance		Trading Indicators		ROE	ROA	52 Week (KD)		MKT Cap
	Close (KD)	Day Δ	Day % Δ	PBV(X)	PE(X)	DY%	Mn KD	MTD(%)	YTD (%)	Value (Mn KD)	(Mn Shrs)	(%)	(%)	High	Low	%
Ream Real Estate	0.090	0.000	0.00%	0.69	-3.65	2.4%	10	0%	0%	0.00	0.00	-19.0%	-10.1%	0.204	0.060	0.03%
Arkan Al Kuwait Real Estate	0.098	0.000	0.10%	0.70	10.65	8.0%	25	0%	16%	0.00	0.01	6.6%	3.5%	0.143	0.078	0.07%
Kuwait Business Town Real Estate	0.065	-0.002	-2.27%	0.59	16.47	0.1%	40	7%	63%	0.12	1.78	3.6%	2.7%	0.070	0.022	0.12%
Dalqan Real Estate	0.274	0.000	0.00%	2.51	50.82	0.0%	17	0%	0%	0.00	0.00	4.9%	4.9%	0.318	0.274	0.05%
Sokouk Holding	0.023	0.000	0.00%	0.29	-3.89	0.0%	13	0%	0%	0.00	0.00	-7.4%	-4.7%	0.031	0.020	0.04%
Tijara and Realestate Investment	0.047	0.001	2.83%	0.44	12.44	4.2%	18	9%	13%	0.41	8.68	3.6%	1.9%	0.058	0.034	0.05%
Al-Arabiya Real Estate	0.027	0.000	-1.09%	0.24	8.25	2.3%	14	9%	6%	0.02	0.57	2.9%	1.1%	0.030	0.021	0.04%
Aqar Real Estate Investments	0.071	-0.001	-1.39%	0.51	5.93	7.0%	15	12%	20%	0.16	2.16	8.7%	7.3%	0.077	0.056	0.04%
Mashaer Holding	0.065	0.000	0.00%	0.49	6.86	0.0%	11	9%	10%	0.03	0.54	7.1%	5.0%	0.070	0.048	0.03%
Investors Holding Group	0.015	0.001	6.21%	0.78	-0.73	0.0%	10	-9%	-12%	0.17	11.56	-106.5%	-57.2%	0.032	0.009	0.03%
Dar Al Thuraya Real Estate	0.052	0.002	3.38%	0.49	13.71	0.0%	8	1%	-18%	0.01	0.17	3.6%	3.6%	0.190	0.046	0.02%
Osos Holding Group	0.089	0.000	0.00%	0.71	6.71	10.6%	9	3%	-1%	0.00	0.00	10.5%	7.0%	0.105	0.081	0.03%
Al Massaleh Real Estate	0.042	0.000	0.00%	0.47	-5.83	0.0%	10	16%	22%	0.00	0.09	-8.1%	-1.9%	0.042	0.026	0.03%
Abyaar Real Estate Development	0.007	0.000	0.00%	0.21	-0.51	0.0%	8	0%	0%	0.00	0.00	-40.9%	-12.4%	0.010	0.005	0.02%
Kuwait Remal Real Estate	0.018	-0.001	-3.26%	0.27	-2.44	0.0%	5	2%	-12%	0.01	0.48	-11.0%	-3.9%	0.024	0.013	0.02%
Kuwait Real Estate Holding	0.030	0.000	-0.33%	0.04	0.80	5.9%	6	2%	20%	0.00	0.10	5.5%	2.2%	0.033	0.021	0.02%
Taameer Real Estate Investment	0.022	0.002	8.46%	0.32	-4.61	0.0%	5	17%	9%	0.29	13.90	-7.0%	-4.5%	0.025	0.013	0.01%
Sanam Real Estate	0.045	0.004	8.70%	0.57	60.94	0.0%	5	10%	30%	0.01	0.16	0.9%	0.9%	0.050	0.027	0.02%
Mena Real Estate	0.038	0.000	1.07%	0.26	-84.19	0.0%	5	4%	36%	0.07	1.96	-0.3%	-0.2%	0.040	0.022	0.01%
Al Masaken International Real Estate Developr	0.036	0.002	5.93%	0.39	43.12	0.5%	4	16%	45%	0.13	3.67	0.9%	0.4%	0.040	0.021	0.01%
Real Estate Trade Centers	0.030	0.000	0.33%	0.17	171.41	0.0%	4	-3%	9%	0.01	0.37	0.1%	0.1%	0.050	0.020	0.01%
Ajwan Gulf Real Estate	0.011	0.000	0.00%	0.19	-7.68	0.0%	2	0%	0%	0.00	0.00	-2.5%	-2.2%	0.013	0.009	0.01%
Al Mudon International Real Estate	0.021	0.000	0.00%	0.16	-10.65	0.0%	2	0%	14%	0.00	0.00	-1.5%	-1.4%	0.027	0.016	0.01%
Total Real Estate - 38 Companies				0.72	25.55	2.2%	2,187			6.96	104.25	2.81%	2.97%			6.33%

DAILY MARKET COVERAGE REPORT

NIC MENA SECURITIES - RESEARCH AND STUDIES DEP



Technology	Price			Valuation Multiples			MKT Cap	Price Performance		Trading Indicators		ROE	ROA	52 Week (KD)		MKT Cap
	Company	Close (KD)	Day Δ	Day % Δ	PBV(X)	PE(X)		DY%	Mn KD	MTD(%)	YTD (%)			Value (Mn KD)	(Mn Shrs)	
Automated Systems	0.096	0.001	1.16%	0.75	-93.12	4.2%	10	17%	39%	0.07	0.71	-0.8%	-0.7%	0.105	0.056	0.03%
Total Technology - 1 Companies				0.75	-93.12	4.2%	10			0.07	0.71	-0.81%	-0.73%			0.03%

Telecom	Price			Valuation Multiples			MKT Cap	Price Performance		Trading Indicators		ROE	ROA	52 Week (KD)		MKT Cap
	Company	Close (KD)	Day Δ	Day % Δ	PBV(X)	PE(X)		DY%	Mn KD	MTD(%)	YTD (%)			Value (Mn KD)	(Mn Shrs)	
Mobile Telecommunications	0.603	0.000	0.00%	2.01	12.03	5.2%	2,609	0%	0%	0.59	0.98	16.7%	4.6%	0.641	0.476	7.55%
Kuwait Telecommunications	0.900	0.000	0.00%	2.09	10.31	3.9%	449	-2%	6%	0.03	0.04	20.2%	11.1%	0.970	0.780	1.30%
National Mobile Telecommunications	0.649	-0.001	-0.15%	0.57	10.80	10.0%	325	1%	4%	0.03	0.05	5.3%	2.4%	0.711	0.550	0.94%
AAN Digital Services	0.011	0.000	0.92%	0.33	35.88	0.0%	10	1%	-11%	0.02	2.28	0.9%	0.7%	0.014	0.009	0.03%
Hayat Communications	0.072	0.001	1.84%	0.61	30.39	0.0%	6	16%	29%	0.01	0.19	2.0%	0.8%	0.087	0.041	0.02%
Telecom - 5 Companies				1.60	11.68	5.4%	3,400			0.70	3.54	13.70%	7.86%			9.83%

Utilities	Price			Valuation Multiples			MKT Cap	Price Performance		Trading Indicators		ROE	ROA	52 Week (KD)		MKT Cap
	Company	Close (KD)	Day Δ	Day % Δ	PBV(X)	PE(X)		DY%	Mn KD	MTD(%)	YTD (%)			Value (Mn KD)	(Mn Shrs)	
Shamal Az-Zour Al-Oula Power & Water	0.266	-0.001	-0.37%	3.82	23.79	0.0%	293	-1%	-4%	0.64	2.41	16.1%	2.3%	0.500	0.245	0.85%
Total Utilities - 1 Companies				3.82	23.79	0.0%	293			0.64	2.41	16.06%	2.26%			0.85%

Total Market 168 Companies				1.39	16.64	3.51%	34,577			33.52	309.39	8.32%	2.77%			100%
-----------------------------------	--	--	--	-------------	--------------	--------------	---------------	--	--	--------------	---------------	--------------	--------------	--	--	-------------

End of Report

The information contained in this document is proprietary to NIC and is for use only by the persons to whom it is issued. This document is confidential and may not be distributed either in part or in whole without the express agreement of NIC. It is intended solely for the use of the individual or entity to whom it is addressed and others authorized to receive it.

Note : ROE and ROA is calculated based on LFY net profit & shareholders' equity and LFY Operating Profits & Total Assets

Sources : National Investments Company Research and Studies Departments, Boursa, Refinitiv.



شركة الاستثمار الوطنية
NATIONAL INVESTMENTS COMPANY

Sharq, Al Mutanabi Street, Khaleejia Tower | P.O. Box 25667, Safat 13117, Kuwait

T.: +965 2226 6666 | Fax: +965 2226 6793 | www.nic.com.kw