



شركة الاستثمارات الوطنية
NATIONAL INVESTMENTS COMPANY

Bursa Kuwait – Daily Market Report
MENA Securities – Research & Studies Dep.

26 May 2021

DAILY MARKET COVERAGE REPORT

NIC MENA SECURITIES - RESEARCH AND STUDIES DEP



Index	Close	DTD Chg Net	DTD (%)	YTD (%)	52W High	52W Low	MKT CAP Bn (KD)	PBV (X)	PE (X)	DY (%)
All Share Index	6,241.17	-29.98	-0.48%	12.53%	6,353.83	4,855.27	36.27	1.46	17.30	3.35%
Premier Index	6,783.96	-28.14	-0.41%	12.11%	6,882.12	5,252.68	27.38	1.84	15.89	3.16%
Main Index	5,181.51	-35.32	-0.68%	13.82%	5,344.98	4,063.00	8.89	0.89	23.83	3.92%
NIC 50 Index	7,585.50	-34.56	-0.45%	13.43%	7,655.99	5,840.70	30.36	1.71	16.79	3.21%

Index	Value Mn(KD)	Volume (Mn share)
All Share Index	49.89	344.68
Premier Index	29.54	65.89
Main Index	20.36	278.79
NIC 50 Index	39.09	152.11

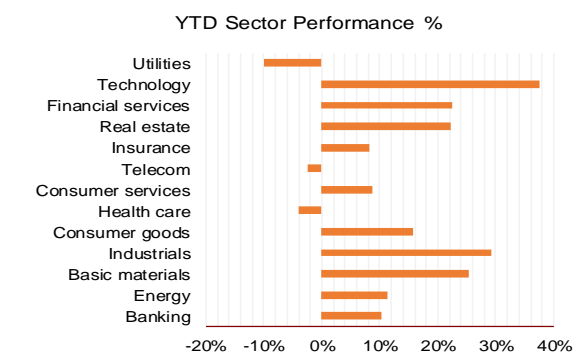
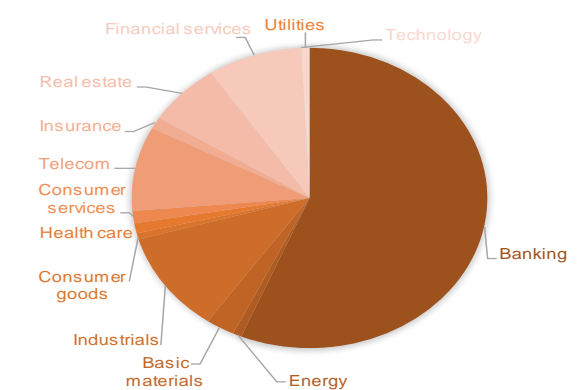
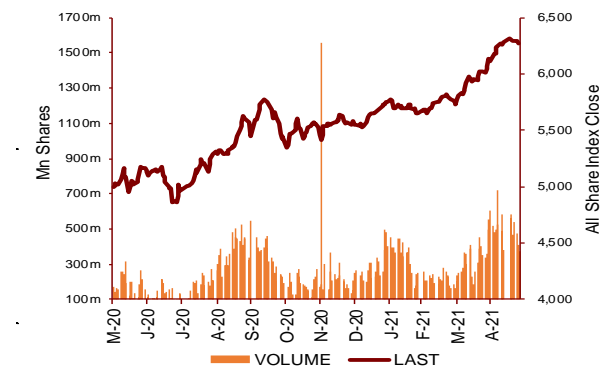
Market Breadth	UP ↑	Down ↓	No Chg ↔
All Share Index	33	94	38
Premier Index	6	15	4
Main Index	27	79	34
NIC 50 Index	8	33	9

Today's Top 5 Gainer %	Close KD	Value KD	DTD (%)
Al Massaleh Real Estate	0.056	25,016	9.38%
Fujairah Cement Industries	0.036	44,261	9.06%
Warba Insurance	0.158	346,339	8.22%
Kuwait Real Estate Holding	0.040	15,780	7.55%
Kuwait Syrian Holding Co	0.034	2,572	7.21%

Today's Top 5 Loser %	Close KD	Value KD	DTD (%)
Al Bareeq Holding	0.050	1,387,011	-10.73%
Real Estate Trade Centers	0.043	2,709	-8.70%
Dar Al Thuraya Real Estate	0.097	1,629	-6.83%
Jiyad Holding	0.063	65,279	-6.81%
Aayan Leasing and Investrn	0.170	3,165,821	-6.59%

Today's Top 5 by Value	Close KD	Trade Val Mn(KD)	DTD (%)
Agility Public Warehousing	1.053	9.19	0.19%
Aayan Leasing and Investment	0.170	3.17	-6.59%
Kuwait Finance House	0.746	2.90	-0.13%
Gulf Bank	0.222	2.50	0.00%
Boubyan Petrochemical	0.907	2.22	-0.87%

Top 5 by Volume	Close KD	Trade Vol Mn(Shrs)	DTD (%)
AAN Digital Services	0.014	47.10	-2.04%
Al Bareeq Holding	0.050	26.69	-10.73%
Coast Investment and Dev	0.073	19.95	3.39%
Aayan Leasing and Investrn	0.170	18.16	-6.59%
Securities House	0.073	17.26	2.40%



Sector	Close	DTD Chg Net	DTD (%)	YTD (%)	52W High	52W Low	MKT CAP Bn (KD)	PBV (X)	PE (X)	DY (%)
Banking	1,393.41	-5.410	-0.39%	10.4%	1,402.5	1,091.5	20.41	1.85	17.01	3.1%
Energy	1,422.92	-12.440	-0.87%	11.4%	1,493.5	1,009.3	0.29	1.03	33.31	4.3%
Basic materials	1,126.18	-19.380	-1.69%	25.3%	1,213.2	703.9	0.95	1.36	20.70	5.3%
Industrials	1,151.90	0.680	0.06%	29.3%	1,228.3	730.7	3.94	1.29	18.59	3.4%
Consumer goods	948.02	-14.940	-1.55%	15.8%	1,011.0	701.5	0.24	1.65	35.23	2.1%
Health care	793.00	-0.940	-0.12%	-4.1%	839.2	790.8	0.39	4.00	46.50	1.0%
Consumer services	810.84	11.290	1.41%	8.6%	842.4	693.9	0.48	1.11	33.90	3.7%
Telecom	1,075.36	-3.090	-0.29%	-2.4%	1,179.6	961.4	3.29	1.55	11.32	5.6%
Insurance	1,250.45	-29.110	-2.28%	8.2%	1,398.2	929.8	0.45	0.96	10.80	4.6%
Real estate	1,163.35	-7.480	-0.64%	22.1%	1,216.5	827.4	2.43	0.81	23.97	2.0%
Financial services	1,139.30	-13.380	-1.16%	22.5%	1,183.8	818.8	3.11	0.89	20.17	3.4%
Technology	691.13	-29.100	-4.04%	37.5%	814.8	404.5	0.01	0.75	-92.15	4.2%
Utilities	655.26	-2.630	-0.40%	-10.1%	1,042.1	644.7	0.27	3.57	22.27	0.0%
	6,241.17	-29.98	-0.48%	12.5%	6,353.8	4,855.3	36.27	1.46	17.30	3.35%

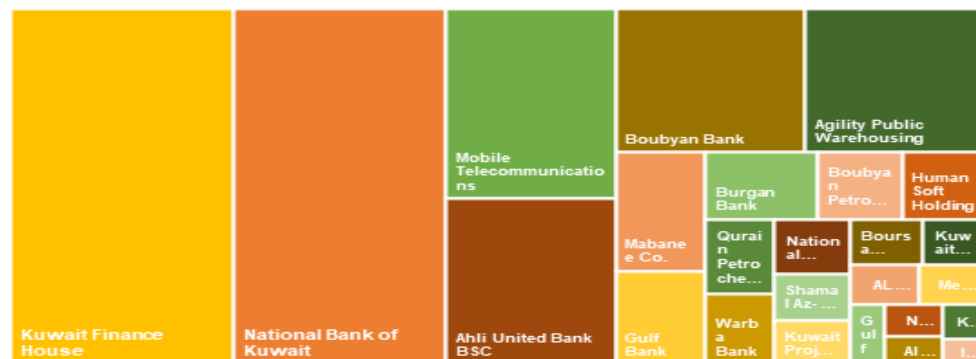
DAILY MARKET COVERAGE REPORT

NIC MENA SECURITIES - RESEARCH AND STUDIES DEP

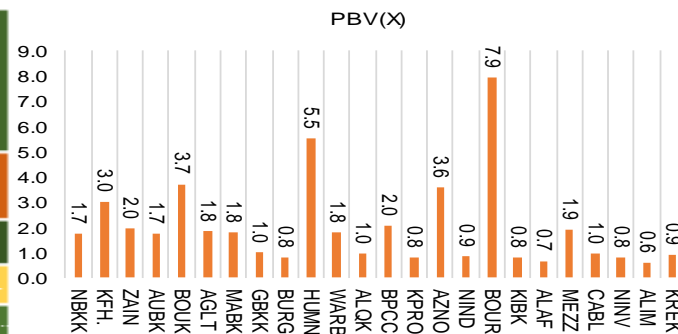


Premier Market	Price			Valuation Multiples			MKT Cap	Price Performance		Trading Indicators		ROE	ROA	52 Week (KD)		MKT Cap
	Close (KD)	Day Δ	Day % Δ	PBV(X)	PE(X)	DY%	Mn KD	MTD(%)	YTD (%)	Value (Mn KD)	(Mn Shrs)	(%)	(%)	High	Low	%
National Bank of Kuwait	0.832	-0.005	-0.60%	1.74	14.91	3.6%	5,984	1%	4%	2.18	2.62	11.7%	1.4%	0.871	0.710	21.86%
Kuwait Finance House	0.746	-0.001	-0.13%	3.03	24.89	2.0%	6,249	3%	21%	2.90	3.89	12.2%	1.3%	0.751	0.513	22.82%
Mobile Telecommunications	0.587	-0.002	-0.34%	1.96	11.71	5.3%	2,540	-3%	-3%	1.97	3.35	16.7%	4.6%	0.641	0.510	9.28%
Ahli United Bank BSC	0.220	-0.001	-0.45%	1.74	10.17	5.3%	2,230	6%	2%	1.49	6.76	17.1%	1.8%	0.247	0.167	8.14%
Boubyan Bank	0.672	-0.006	-0.88%	3.71	34.11	0.9%	2,137	3%	24%	0.17	0.26	10.9%	1.2%	0.678	0.457	7.80%
Agility Public Warehousing	1.053	0.002	0.19%	1.83	23.22	1.7%	2,015	11%	55%	9.19	8.67	7.9%	4.2%	1.185	0.552	7.36%
Mabane Co.	0.723	-0.007	-0.96%	1.79	15.01	1.3%	847	3%	17%	0.46	0.63	11.9%	5.8%	0.761	0.526	3.09%
Gulf Bank	0.222	0.000	0.00%	1.01	10.50	4.3%	668	2%	1%	2.50	11.24	9.6%	1.0%	0.245	0.187	2.44%
Burgan Bank	0.229	-0.001	-0.43%	0.80	7.09	5.0%	600	2%	8%	0.88	3.83	11.3%	1.2%	0.234	0.175	2.19%
Human Soft Holding	3.640	0.014	0.39%	5.51	12.34	5.1%	443	11%	-4%	0.34	0.09	44.6%	30.3%	4.030	2.486	1.62%
Warba Bank	0.249	-0.002	-0.80%	1.80	23.71	0.0%	392	-2%	6%	0.27	1.07	7.6%	0.5%	0.278	0.190	1.43%
Qurain Petrochemical Industries	0.395	-0.012	-2.95%	0.96	14.29	3.9%	403	-8%	17%	0.24	0.59	6.7%	3.6%	0.447	0.234	1.47%
Boubyan Petrochemical	0.907	-0.008	-0.87%	2.05	38.69	5.7%	457	-2%	42%	2.22	2.46	5.3%	2.1%	0.960	0.511	1.67%
Kuwait Projects Company Holding	0.150	-0.001	-0.66%	0.80	9.06	6.2%	272	-4%	-6%	0.13	0.90	8.9%	0.3%	0.181	0.147	0.99%
Shamal Az-Zour Al-Oula Power & Water	0.249	-0.001	-0.40%	3.57	22.27	0.0%	274	-3%	-10%	0.35	1.39	16.1%	2.3%	0.500	0.245	1.00%
National Industries Group Holding	0.234	0.001	0.43%	0.86	7.02	4.7%	326	7%	32%	0.24	1.04	12.3%	3.7%	0.244	0.151	1.19%
Boursa Kuwait Securities Co	1.266	-0.005	-0.39%	7.92	26.50	0.0%	254	10%	15%	0.41	0.32	29.9%	26.5%	1.290	0.990	0.93%
Kuwait International Bank	0.216	0.000	0.00%	0.78	12.84	4.6%	220	0%	4%	0.80	3.72	6.1%	0.6%	0.226	0.162	0.80%
ALAFCO Aviation Lease and Finance	0.225	0.001	0.45%	0.67	12.11	4.4%	214	5%	4%	0.12	0.52	5.5%	1.4%	0.239	0.148	0.78%
Mezzan Holding	0.664	0.011	1.68%	1.90	35.66	2.5%	201	14%	11%	0.40	0.61	5.3%	2.2%	0.679	0.540	0.73%
Gulf Cable and Electrical Industries	0.810	-0.017	-2.06%	0.97	40.01	3.4%	169	-1%	7%	0.31	0.38	2.4%	2.2%	0.888	0.482	0.62%
National Investments	0.183	0.000	0.00%	0.81	13.61	4.4%	146	-4%	36%	0.04	0.24	5.9%	5.0%	0.198	0.086	0.53%
Alimtiq Investment Group	0.127	-0.005	-3.79%	0.61	6.68	6.2%	132	0%	13%	0.89	6.90	9.1%	5.2%	0.134	0.079	0.48%
Kuwait Real Estate	0.133	0.000	0.00%	0.92	16.63	0.3%	117	-7%	22%	0.37	2.76	5.5%	2.2%	0.146	0.075	0.43%
Integrated Holding	0.412	0.002	0.49%	1.32	11.48	9.7%	91	1%	13%	0.67	1.64	11.5%	8.5%	0.441	0.342	0.33%
Total		-28.14	-0.41%	1.84	15.89	3.16%	27,382	2.5%	12.1%	29.54	65.89	11.58%	1.58%			100%

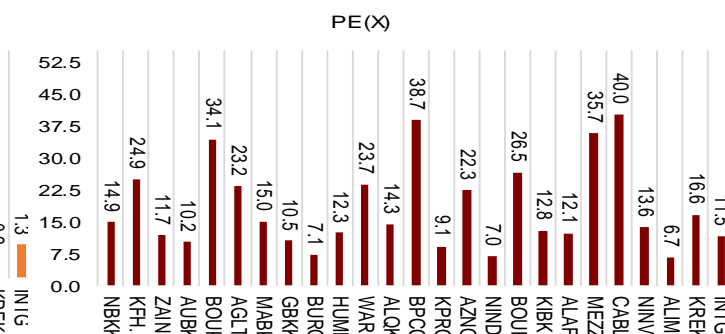
Market Capitalization



Price to Book Value

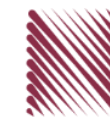


Price to Earning Value



DAILY MARKET COVERAGE REPORT

NIC MENA SECURITIES - RESEARCH AND STUDIES DEP



Premier Market	Price			Valuation Multiples			MKT Cap	Price Performance		ROE	ROA
Company	Close (KD)	Day Δ	Day % Δ	PBV(X)	PE(X)	DY%	Mn KD	MTD(%)	YTD (%)	(%)	(%)
National Bank of Kuwait	0.832	-0.005	-0.60%	1.74	14.9	3.6%	5,984	1.3%	4.3%	11.7%	1.4%
Kuwait Finance House	0.746	-0.001	-0.13%	3.03	24.9	2.0%	6,249	3.2%	21.2%	12.2%	1.3%
Mobile Telecommunications	0.587	-0.002	-0.34%	1.96	11.7	5.3%	2,540	-2.7%	-3.1%	16.7%	4.6%
Ahli United Bank BSC	0.220	-0.001	-0.45%	1.74	10.2	5.3%	2,230	5.8%	1.8%	17.1%	1.8%
Boubyan Bank	0.672	-0.006	-0.88%	3.71	34.1	0.9%	2,137	2.6%	24.2%	10.9%	1.2%
Agility Public Warehousing	1.053	0.002	0.19%	1.83	23.2	1.7%	2,015	10.9%	55.5%	7.9%	4.2%
Mabane Co.	0.723	-0.007	-0.96%	1.79	15.0	1.3%	847	3.4%	16.6%	11.9%	5.8%
Gulf Bank	0.222	0.000	0.00%	1.01	10.5	4.3%	668	2.3%	1.4%	9.6%	1.0%
Burgan Bank	0.229	-0.001	-0.43%	0.80	7.1	5.0%	600	1.8%	7.5%	11.3%	1.2%
Human Soft Holding	3.640	0.014	0.39%	5.51	12.3	5.1%	443	10.6%	-4.2%	44.6%	30.3%
Warba Bank	0.249	-0.002	-0.80%	1.80	23.7	0.0%	392	-1.6%	5.5%	7.6%	0.5%
Qurain Petrochemical Industries	0.395	-0.012	-2.95%	0.96	14.3	3.9%	403	-8.1%	16.9%	6.7%	3.6%
Boubyan Petrochemical	0.907	-0.008	-0.87%	2.05	38.7	5.7%	457	-1.9%	41.7%	5.3%	2.1%
Kuwait Projects Company Holding	0.150	-0.001	-0.66%	0.80	9.1	6.2%	272	-4.5%	-5.7%	8.9%	0.3%
Shamal Az-Zour Al-Oula Power & Water	0.249	-0.001	-0.40%	3.57	22.3	0.0%	274	-2.7%	-10.5%	16.1%	2.3%
National Industries Group Holding	0.234	0.001	0.43%	0.86	7.0	4.7%	326	7.4%	32.4%	12.3%	3.7%
Boursa Kuwait Securities Co	1.266	-0.005	-0.39%	7.92	26.5	0.0%	254	10.4%	15.1%	29.9%	26.5%
Kuwait International Bank	0.216	0.000	0.00%	0.78	12.8	4.6%	220	-0.5%	3.8%	6.1%	0.6%
ALAFCO Aviation Lease and Finance	0.225	0.001	0.45%	0.67	12.1	4.4%	214	4.7%	4.2%	5.5%	1.4%
Mezzan Holding	0.664	0.011	1.68%	1.90	35.7	2.5%	201	13.8%	11.4%	5.3%	2.2%
Gulf Cable and Electrical Industries	0.810	-0.017	-2.06%	0.97	40.0	3.4%	169	-1.5%	7.3%	2.4%	2.2%
National Investments	0.183	0.000	0.00%	0.81	13.6	4.4%	146	-4.2%	35.6%	5.9%	5.0%
Alimtiq Investment Group	0.127	-0.005	-3.79%	0.61	6.7	6.2%	132	0.0%	13.4%	9.1%	5.2%
Kuwait Real Estate	0.133	0.000	0.00%	0.92	16.6	0.3%	117	-7.0%	22.0%	5.5%	2.2%
Integrated Holding	0.412	0.002	0.49%	1.32	11.5	9.7%	91	0.7%	12.8%	11.5%	8.5%
Total		-28.14	-0.41%	1.84	15.89	3.16%	27,382	2.5%	12.1%	11.58%	1.58%

Premier Market	Price			Moving Average		RSI	MKT Cap	Price Performance		52 Week (KD)	
Discription	Close (KD)	Day Δ	Day % Δ	50 Day	200 Day	14 Day	Mn KD	MTD(%)	YTD (%)	High	Low
Premier Index	6,784	-28.14	-0.41%	6,546	6,195	76	27,382	2.5%	12.2%	6,882	5,253

Top 5 Performrs (Today's Price Change)

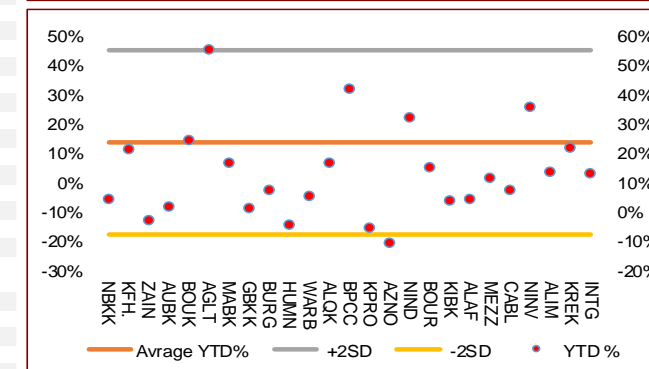
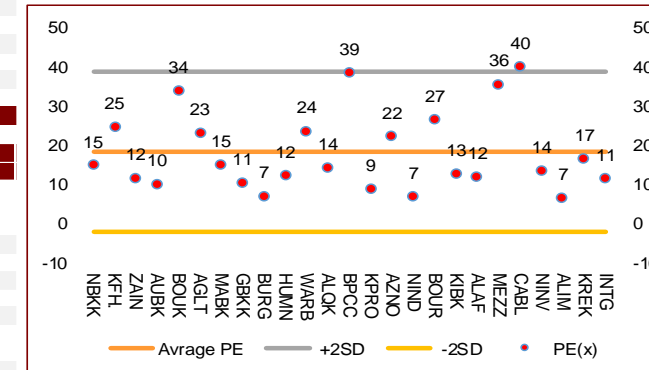
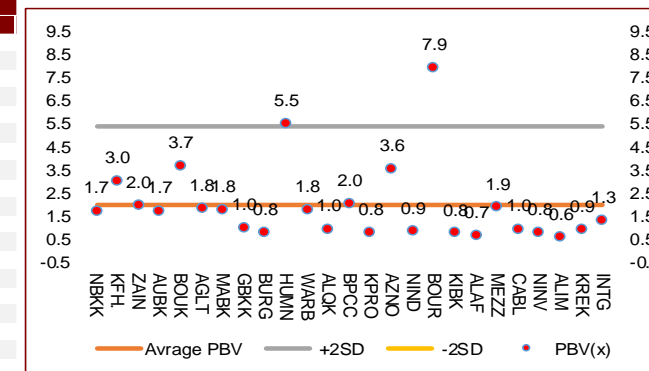
Mezzan Holding	0.664	0.011	1.68%	0.586	0.593	75	201	13.8%	11.4%	0.679	0.540
Integrated Holding	0.412	0.002	0.49%	0.414	0.385	46	91	0.7%	12.8%	0.441	0.342
ALAFCO Aviation Lease and Finance	0.225	0.001	0.45%	0.214	0.191	56	214	4.7%	4.2%	0.239	0.148
National Industries Group Holding	0.234	0.001	0.43%	0.206	0.187	59	326	7.4%	32.4%	0.244	0.151
Human Soft Holding	3.640	0.014	0.39%	3.669	3.345	71	443	10.6%	-4.2%	4.030	2.486

Middel Performrs (Today's Price Change)

Agility Public Warehousing	1.053	0.002	0.19%	0.840	0.719	67	2,015	10.9%	55.5%	1.185	0.552
Gulf Bank	0.222	0.000	0.00%	0.218	0.219	50	668	2.3%	1.4%	0.245	0.187
Kuwait International Bank	0.216	0.000	0.00%	0.208	0.202	39	220	-0.5%	3.8%	0.226	0.162
National Investments	0.183	0.000	0.00%	0.181	0.148	25	146	-4.2%	35.6%	0.198	0.086
Kuwait Real Estate	0.133	0.000	0.00%	0.134	0.112	27	117	-7.0%	22.0%	0.146	0.075
Kuwait Finance House	0.746	-0.001	-0.13%	0.717	0.641	76	6,249	3.2%	21.2%	0.751	0.513
Mobile Telecommunications	0.587	-0.002	-0.34%	0.609	0.607	15	2,540	-2.7%	-3.1%	0.641	0.510
Boursa Kuwait Securities Co	1.266	-0.005	-0.39%	1.160	0.977	81	254	10.4%	15.1%	1.290	0.990
Shamal Az-Zour Al-Oula Power & Water	0.249	-0.001	-0.40%	0.260	0.278	25	274	-2.7%	-10.5%	0.500	0.245
Burgan Bank	0.229	-0.001	-0.43%	0.100	0.100	62	600	1.8%	7.5%	1.210	0.996
Ahli United Bank BSC	0.220	-0.001	-0.45%	0.212	0.218	65	2,230	5.8%	1.8%	0.247	0.167
National Bank of Kuwait	0.832	-0.005	-0.60%	0.823	0.813	65	5,984	1.3%	4.3%	0.871	0.710
Kuwait Projects Company Holding	0.150	-0.001	-0.66%	0.160	0.159	30	272	-4.5%	-5.7%	0.181	0.147
Warba Bank	0.249	-0.002	-0.80%	0.246	0.237	33	392	-1.6%	5.5%	0.278	0.190
Boubyan Petrochemical	0.907	-0.008	-0.87%	0.890	0.677	35	457	-1.9%	41.7%	0.960	0.511

Bottom 5 Performrs (Today's Price Change)

Boubyan Bank	0.672	-0.006	-0.88%	0.623	0.573	68	2,137	2.6%	24.2%	0.678	0.457
Mabane Co.	0.723	-0.007	-0.96%	0.710	0.658	66	847	3.4%	16.6%	0.761	0.526
Gulf Cable and Electrical Industries	0.810	-0.017	-2.06%	0.845	0.755	53	169	-1.5%	7.3%	0.888	0.482
Qurain Petrochemical Industries	0.395	-0.012	-2.95%	0.411	0.341	16	403	-8.1%	16.9%	0.447	0.234
Alimtiq Investment Group	0.127	-0.005	-3.79%	0.118	0.106	73	132	0.0%	13.4%	0.134	0.079



DAILY MARKET COVERAGE REPORT

NIC MENA SECURITIES - RESEARCH AND STUDIES DEP



Banking Sector	Price			Valuation Multiples			MKT Cap	Price Performance		Trading Indicators		ROE	ROA	52 Week (KD)		MKT Cap
	Company	Close (KD)	Day Δ	Day % Δ	PBV(X)	PE(X)		DY%	Mn KD	MTD(%)	YTD (%)			Value (Mn KD)	(Mn Shrs)	
National Bank of Kuwait	0.832	-0.005	-0.60%	1.74	14.91	3.6%	5,984	1%	4%	2.18	2.62	11.7%	1.4%	0.871	0.710	16.50%
Kuwait Finance House	0.746	-0.001	-0.13%	3.03	24.89	2.0%	6,249	3%	21%	2.90	3.89	12.2%	1.3%	0.751	0.513	17.23%
Ahli United Bank BSC	0.220	-0.001	-0.45%	1.74	10.17	5.3%	2,230	6%	2%	1.49	6.76	17.1%	1.8%	0.247	0.167	6.15%
Boubyan Bank	0.672	-0.006	-0.88%	3.71	34.11	0.9%	2,137	3%	24%	0.17	0.26	10.9%	1.2%	0.678	0.457	5.89%
Commercial Bank of Kuwait	0.500	0.000	0.00%	1.31	0.00	3.7%	962	0%	0%	0.00	0.00	0.0%	0.0%	0.605	0.465	2.65%
Gulf Bank	0.222	0.000	0.00%	1.01	10.50	4.3%	668	2%	1%	2.50	11.24	9.6%	1.0%	0.245	0.187	1.84%
Burgan Bank	0.229	-0.001	-0.43%	0.80	7.09	5.0%	600	2%	8%	0.88	3.83	11.3%	1.2%	0.234	0.175	1.65%
Ahli United Bank	0.288	0.000	0.00%	1.37	11.34	4.3%	624	0%	10%	0.08	0.26	12.1%	1.3%	0.294	0.219	1.72%
Warba Bank	0.249	-0.002	-0.80%	1.80	23.71	0.0%	392	-2%	6%	0.27	1.07	7.6%	0.5%	0.278	0.190	1.08%
Al Ahli Bank of Kuwait	0.205	0.000	0.00%	0.62	12.06	6.5%	346	0%	3%	0.15	0.74	5.1%	0.6%	0.210	0.150	0.95%
Kuwait International Bank	0.216	0.000	0.00%	0.78	12.84	4.6%	220	0%	4%	0.80	3.72	6.1%	0.6%	0.226	0.162	0.61%
Total Banking Sector - 11 Companies				1.85	17.01	3.1%	20,412			11.42	34.38	10.90%	1.21%			56.28%

Basic Materials	Price			Valuation Multiples			MKT Cap	Price Performance		Trading Indicators		ROE	ROA	52 Week (KD)		MKT Cap
	Company	Close (KD)	Day Δ	Day % Δ	PBV(X)	PE(X)		DY%	Mn KD	MTD(%)	YTD (%)			Value (Mn KD)	(Mn Shrs)	
Qurain Petrochemical Industries	0.395	-0.012	-2.95%	0.96	14.29	3.9%	403	-8%	17%	0.24	0.59	6.7%	3.6%	0.447	0.234	1.11%
Boubyan Petrochemical	0.907	-0.008	-0.87%	2.05	38.69	5.7%	457	-2%	42%	2.22	2.46	5.3%	2.1%	0.960	0.511	1.26%
Al Kout Industrial Projects	0.642	0.000	0.00%	2.09	13.53	7.8%	65	0%	-5%	0.00	0.00	15.4%	11.3%	0.808	0.628	0.18%
Kuwait Foundry	0.293	0.000	0.00%	0.98	23.68	18.2%	21	7%	9%	0.00	0.00	4.1%	3.8%	0.318	0.222	0.06%
Total Basic Materials - 4 Companies				1.36	20.70	5.3%	947			2.45	3.05	6.57%	5.07%			2.61%

Consumer Goods	Price			Valuation Multiples			MKT Cap	Price Performance		Trading Indicators		ROE	ROA	52 Week (KD)		MKT Cap
	Company	Close (KD)	Day Δ	Day % Δ	PBV(X)	PE(X)		DY%	Mn KD	MTD(%)	YTD (%)			Value (Mn KD)	(Mn Shrs)	
Mezzan Holding	0.664	0.011	1.68%	1.90	35.66	2.5%	201	14%	11%	0.40	0.61	5.3%	2.2%	0.679	0.540	0.55%
Livestock Transport and Trading	0.186	0.000	0.00%	0.97	33.15	0.1%	39	1%	6%	0.01	0.05	2.9%	2.0%	0.210	0.171	0.11%
Total Consumer Goods - 2 Companies				1.65	35.23	2.1%	240			0.41	0.66	4.67%	3.71%			0.66%

DAILY MARKET COVERAGE REPORT

NIC MENA SECURITIES - RESEARCH AND STUDIES DEP



Consumer Services	Price			Valuation Multiples			MKT Cap	Price Performance		Trading Indicators		ROE	ROA	52 Week (KD)		MKT Cap
Company	Close (KD)	Day Δ	Day % Δ	PBV(X)	PE(X)	DY%	Mn KD	MTD(%)	YTD (%)	Value (Mn KD)	(Mn Shrs)	(%)	(%)	High	Low	%
Jazeera Airways	0.645	-0.015	-2.27%	3.21	8.63	5.4%	129	5%	-12%	0.27	0.42	37.1%	9.0%	0.750	0.515	0.36%
Kuwait National Cinema	0.850	0.000	0.00%	0.98	9.18	5.7%	79	15%	13%	0.02	0.02	10.6%	7.2%	0.990	0.600	0.22%
Oula Fuel Marketing	0.145	-0.001	-0.68%	0.87	15.17	4.1%	59	-4%	18%	0.01	0.07	5.7%	3.2%	0.168	0.103	0.16%
Al Soor Fuel Marketing	0.143	-0.001	-0.69%	0.88	16.74	3.5%	58	-6%	17%	0.02	0.14	5.3%	3.7%	0.164	0.103	0.16%
Sultan Center Food Products	0.170	-0.008	-4.49%	1.06	21.39	0.0%	48	6%	70%	0.09	0.50	4.9%	0.7%	0.200	0.090	0.13%
Jiyad Holding	0.063	-0.005	-6.81%	0.56	12.55	0.0%	22	52%	42%	0.07	1.03	4.5%	2.8%	0.073	0.029	0.06%
IFA Hotels and Resorts	0.044	-0.001	-1.78%	1.63	-1.24	0.0%	28	-3%	126%	0.05	1.11	-131.5%	-8.1%	0.051	0.016	0.08%
Kuwait Resorts	0.078	0.000	-0.13%	0.55	14.62	0.0%	15	12%	27%	0.07	0.86	3.8%	3.2%	0.082	0.041	0.04%
Future Kid Entertainment and Real Estate	0.077	-0.001	-0.77%	0.45	29.09	15.0%	8	-1%	-9%	0.17	2.15	1.5%	0.9%	0.122	0.067	0.02%
Al Eid Food	0.210	0.001	0.48%	1.41	16.77	0.0%	25	10%	153%	0.44	2.09	8.4%	6.1%	0.218	0.051	0.07%
Kuwait Hotels	0.065	-0.001	-0.77%	0.91	-3.73	0.0%	4	11%	8%	0.01	0.22	-24.4%	-13.2%	0.111	0.050	0.01%
Palms Agro Production	0.066	0.000	0.00%	0.56	-46.60	15.1%	3	-5%	2%	0.00	0.00	-1.2%	-0.9%	0.080	0.052	0.01%
Total Consumer Services - 12 Companies				1.11	33.90	3.7%	479			1.21	8.60	3.28%	3.04%			1.32%

Financial Services	Price			Valuation Multiples			MKT Cap	Price Performance		Trading Indicators		ROE	ROA	52 Week (KD)		MKT Cap
Company	Close (KD)	Day Δ	Day % Δ	PBV(X)	PE(X)	DY%	Mn KD	MTD(%)	YTD (%)	Value (Mn KD)	(Mn Shrs)	(%)	(%)	High	Low	%
Egypt Kuwait Holding	0.293	-0.012	-3.93%	1.91	10.88	6.1%	330	-18%	-9%	0.19	0.64	17.6%	7.1%	0.436	0.288	0.91%
Kuwait Projects Company Holding	0.150	-0.001	-0.66%	0.80	9.06	6.2%	272	-4%	-6%	0.13	0.90	8.9%	0.3%	0.181	0.147	0.75%
National Industries Group Holding	0.234	0.001	0.43%	0.86	7.02	4.7%	326	7%	32%	0.24	1.04	12.3%	3.7%	0.244	0.151	0.90%
Boursa Kuwait Securities Co	1.266	-0.005	-0.39%	7.92	26.50	0.0%	254	10%	15%	0.41	0.32	29.9%	26.5%	1.290	0.990	0.70%
GFH Financial Group	0.062	0.000	0.65%	0.68	8.59	4.5%	213	5%	31%	0.20	3.18	8.0%	1.3%	0.068	0.041	0.59%
National Investments	0.183	0.000	0.00%	0.81	13.61	4.4%	146	-4%	36%	0.04	0.24	5.9%	5.0%	0.198	0.086	0.40%
Tamdeen Investment	0.244	-0.007	-2.79%	0.30	10.12	4.9%	83	0%	-21%	0.01	0.03	3.0%	2.2%	0.371	0.199	0.23%
Alimtiq Investment Group	0.127	-0.005	-3.79%	0.61	6.68	6.2%	132	0%	13%	0.89	6.90	9.1%	5.2%	0.134	0.079	0.36%
Commercial Facilities	0.204	-0.001	-0.49%	0.63	7.86	8.2%	104	13%	7%	0.01	0.05	8.0%	4.2%	0.223	0.161	0.29%
Aayan Leasing and Investment	0.170	-0.012	-6.59%	1.74	-8.16	1.2%	119	-2%	77%	3.17	18.16	-21.4%	-4.9%	0.204	0.041	0.33%
Kuwait Investment	0.187	-0.003	-1.58%	0.82	5.85	5.4%	102	0%	53%	0.07	0.37	13.9%	6.0%	0.212	0.099	0.28%
Noor Financial Investment	0.234	-0.001	-0.43%	1.43	11.44	2.1%	92	-8%	38%	0.10	0.43	12.5%	7.5%	0.271	0.115	0.25%
Arzan Financial Group for Financing and Invest	0.131	0.000	0.00%	1.04	93.68	0.0%	103	17%	135%	0.14	1.11	1.1%	0.7%	0.138	0.034	0.28%
Kuwait Financial Centre	0.135	-0.002	-1.46%	0.68	9.28	3.7%	65	29%	62%	0.12	0.85	7.3%	3.5%	0.142	0.070	0.18%
Gulf Investment House	0.241	0.001	0.42%	2.71	445.78	0.0%	98	38%	190%	0.31	1.29	0.6%	0.5%	0.279	0.046	0.27%
Al Bareeq Holding	0.050	-0.006	-10.73%	0.52	9.97	0.0%	22	-46%	-24%	1.39	26.69	5.2%	5.0%	0.106	0.014	0.06%
Arabi Group Holdings	0.198	0.000	0.00%	1.07	-19.90	0.0%	33	0%	0%	0.00	0.00	-5.4%	-0.6%	0.198	0.198	0.09%
Kuwait and Middle East Financial Investment	0.139	-0.003	-2.11%	2.26	55.51	0.0%	36	1%	14%	0.06	0.44	4.1%	3.2%	0.154	0.078	0.10%

DAILY MARKET COVERAGE REPORT

NIC MENA SECURITIES - RESEARCH AND STUDIES DEP



Financial services	Price			Valuation Multiples			MKT Cap	Price Performance		Trading Indicators		ROE	ROA	52 Week (KD)		MKT Cap
Company	Close (KD)	Day Δ	Day % Δ	PBV(X)	PE(X)	DY%	Mn KD	MTD(%)	YTD (%)	Value (Mn KD)	(Mn Shrs)	(%)	(%)	High	Low	%
Privatization Holding	0.056	-0.002	-2.79%	0.41	-50.22	0.0%	34	18%	39%	0.70	12.35	-0.8%	-0.5%	0.059	0.039	0.09%
Asiya Capital Investments	0.041	-0.001	-3.10%	0.44	20.93	0.1%	32	-4%	11%	0.16	3.96	2.1%	2.0%	0.047	0.029	0.09%
Umm Al Qaiwain General Investment Co	0.077	0.000	0.00%	0.52	14.45	4.7%	28	0%	3%	0.00	0.00	3.6%	3.3%	0.096	0.064	0.08%
Securities House	0.073	0.002	2.40%	0.99	-106.14	0.0%	40	33%	70%	1.25	17.26	-0.9%	-0.7%	0.079	0.033	0.11%
KAMCO Investment	0.097	-0.004	-3.48%	0.59	10.95	0.0%	33	-2%	31%	0.08	0.84	5.4%	2.3%	0.113	0.067	0.09%
First Investment	0.087	-0.002	-1.81%	0.93	-0.82	0.0%	39	8%	39%	0.83	9.46	-113.6%	-62.0%	0.095	0.033	0.11%
Inovest BSC Public	0.113	-0.002	-1.74%	0.79	15.16	5.2%	34	20%	72%	0.25	2.25	5.2%	2.9%	0.122	0.044	0.09%
Coast Investment and Development	0.073	0.002	3.39%	0.78	73.05	0.0%	43	39%	51%	1.45	19.95	1.1%	1.0%	0.071	0.029	0.12%
Al Madar Finance and Investment	0.152	0.002	1.33%	1.38	22.70	0.0%	31	18%	67%	0.07	0.45	6.1%	5.0%	0.150	0.069	0.09%
Bayan Investment	0.053	-0.001	-0.93%	0.53	-27.39	0.0%	19	-13%	27%	0.07	1.29	-1.9%	-0.8%	0.065	0.032	0.05%
Al Manar Financing and Leasing	0.067	0.002	3.24%	0.61	17.27	0.8%	21	7%	35%	0.00	0.03	3.5%	2.7%	0.074	0.040	0.06%
Manazel Holding	0.053	-0.002	-3.83%	1.16	33.87	0.0%	23	0%	66%	0.13	2.46	3.4%	0.8%	0.060	0.027	0.06%
Kuwait Finance and Investment	0.110	-0.004	-3.51%	0.87	49.39	0.0%	34	10%	156%	0.09	0.87	1.8%	1.2%	0.125	0.038	0.09%
National International Holding	0.093	0.005	5.35%	0.49	11.13	3.2%	19	17%	12%	0.14	1.56	4.4%	3.3%	0.097	0.056	0.05%
Osoul Investment	0.089	0.000	0.00%	0.64	7.18	0.0%	13	-1%	11%	0.00	0.00	9.0%	8.2%	0.110	0.072	0.04%
UniCap Investment and Finance	0.072	0.003	3.58%	0.69	-34.05	0.0%	16	15%	72%	0.02	0.26	-2.0%	-1.0%	0.078	0.035	0.04%
Amar Finance and Leasing	0.056	0.000	-0.36%	0.63	46.97	0.0%	11	14%	15%	0.01	0.15	1.3%	1.2%	0.080	0.039	0.03%
Gulf North Africa Holding	0.072	0.002	2.13%	0.96	92.76	0.0%	11	20%	10%	0.10	1.39	1.0%	0.6%	0.071	0.054	0.03%
Al Salam Group Holding	0.026	-0.001	-2.26%	0.23	196.28	0.0%	7	0%	3%	0.11	4.21	0.1%	0.1%	0.034	0.019	0.02%
International Financial Advisors	0.118	0.000	0.00%	3.56	-1.60	0.5%	29	7%	97%	0.21	1.74	-222.8%	-19.3%	0.127	0.028	0.08%
Al Madina for Finance and Investment	0.016	0.000	0.00%	0.56	-3.13	0.0%	7	0%	3%	0.00	0.00	-17.9%	-7.7%	0.019	0.010	0.02%
Credit Rating and Collection	0.028	0.001	4.94%	0.85	-18.57	0.0%	5	-3%	25%	0.00	0.12	-4.6%	-4.3%	0.035	0.018	0.01%
Ekttitab Holding	0.020	-0.001	-3.94%	0.47	-13.73	0.0%	6	14%	29%	0.05	2.39	-3.4%	-3.0%	0.023	0.011	0.02%
Kuwait Syrian Holding Co	0.034	0.002	7.21%	0.29	-17.47	0.0%	6	5%	7%	0.00	0.08	-1.7%	-1.1%	0.043	0.025	0.02%
Warba Capital Holding	0.070	0.000	-0.14%	0.77	-11.04	0.0%	7	-5%	43%	0.00	0.02	-7.0%	-6.2%	0.080	0.042	0.02%
National Consumer Holding	0.067	0.001	1.06%	0.74	327.16	0.0%	6	48%	36%	0.00	0.01	0.2%	0.2%	0.082	0.036	0.02%
Al Deera Holding	0.203	0.006	3.05%	4.11	-53.19	0.0%	19	4%	128%	0.00	0.00	-7.7%	-1.7%	0.245	0.081	0.05%
Al Mal Investment Company	0.006	0.000	0.00%	0.26	-0.55	0.0%	2	0%	0%	0.00	0.00	-47.6%	-23.3%	0.011	0.006	0.01%
Gulf Franchising Holding	0.052	0.000	0.00%	0.82	-2.25	0.0%	2	-11%	-13%	0.00	0.00	-36.2%	-10.8%	0.072	0.041	0.01%
Total Financial Services - 47 Companies				0.89	20.17	3.4%	3,106			13.20	145.72	4.42%	4.14%			8.56%

DAILY MARKET COVERAGE REPORT

NIC MENA SECURITIES - RESEARCH AND STUDIES DEP



Health Care	Price			Valuation Multiples			MKT Cap	Price Performance		Trading Indicators		ROE	ROA	52 Week (KD)		MKT Cap
	Company	Close (KD)	Day Δ	Day % Δ	PBV(X)	PE(X)		DY%	Mn KD	MTD(%)	YTD (%)			Value (Mn KD)	(Mn Shrs)	
Al-Maidan Clinic for Oral Health Services	1.240	0.000	0.00%	8.03	48.56	0.6%	310	0%	0%	0.00	0.00	16.5%	10.9%	1.240	1.220	0.85%
Advanced Technology	0.495	0.000	0.00%	1.29	40.30	3.0%	74	0%	-13%	0.00	0.00	3.2%	0.7%	0.665	0.495	0.20%
Yiaco Medical	0.523	-0.027	-4.91%	4.48	39.00	0.0%	9	-2%	-38%	0.00	0.00	11.5%	0.6%	1.000	0.460	0.02%
Total Health Care - 3 Companies				4.00	46.50	1.0%	393			0.00	0.00	8.61%	4.68%			1.08%

Industrials	Price			Valuation Multiples			MKT Cap	Price Performance		Trading Indicators		ROE	ROA	52 Week (KD)		MKT Cap
	Company	Close (KD)	Day Δ	Day % Δ	PBV(X)	PE(X)		DY%	Mn KD	MTD(%)	YTD (%)			Value (Mn KD)	(Mn Shrs)	
Agility Public Warehousing	1.053	0.002	0.19%	1.83	23.22	1.7%	2,015	11%	55%	9.19	8.67	7.9%	4.2%	1.185	0.552	5.56%
Human Soft Holding	3.640	0.014	0.39%	5.51	12.34	5.1%	443	11%	-4%	0.34	0.09	44.6%	30.3%	4.030	2.486	1.22%
ALAFCO Aviation Lease and Finance	0.225	0.001	0.45%	0.67	12.11	4.4%	214	5%	4%	0.12	0.52	5.5%	1.4%	0.239	0.148	0.59%
Kuwait Cement	0.260	-0.002	-0.76%	0.89	46.15	5.7%	185	12%	13%	0.13	0.49	1.9%	1.3%	0.266	0.156	0.51%
Gulf Cable and Electrical Industries	0.810	-0.017	-2.06%	0.97	40.01	3.4%	169	-1%	7%	0.31	0.38	2.4%	2.2%	0.888	0.482	0.47%
Integrated Holding	0.412	0.002	0.49%	1.32	11.48	9.7%	91	1%	13%	0.67	1.64	11.5%	8.5%	0.441	0.342	0.25%
Kuwait Portland Cement	0.875	0.005	0.57%	1.17	11.56	11.2%	88	-2%	11%	0.06	0.07	10.2%	8.2%	0.967	0.683	0.24%
Educational Holding Group	0.648	0.018	2.86%	2.29	12.55	3.8%	97	-6%	36%	0.16	0.26	18.3%	16.7%	0.900	0.378	0.27%
United Projects for Aviation Services	0.293	0.001	0.34%	1.46	11.86	3.0%	111	-9%	1%	0.02	0.08	12.3%	7.8%	0.410	0.186	0.31%
Heavy Engineering Industries and Shipbuilding	0.487	-0.002	-0.41%	1.41	7.82	6.0%	88	15%	23%	0.35	0.72	18.0%	5.9%	0.503	0.328	0.24%
National Industries	0.162	-0.002	-1.22%	0.67	13.19	6.1%	57	6%	4%	0.01	0.07	5.1%	3.8%	0.180	0.143	0.16%
ACICO Industries	0.104	-0.001	-0.95%	0.33	13.50	4.8%	34	4%	16%	0.03	0.32	2.5%	0.6%	0.118	0.082	0.09%
Kuwait Company for Process Plant Constructi	0.598	-0.011	-1.81%	2.50	13.52	2.8%	67	12%	56%	0.09	0.15	18.5%	7.7%	0.629	0.220	0.19%
Ras Al Khaimah for White Cement and Constr	0.064	0.000	0.00%	0.50	19.54	8.6%	32	-5%	-2%	0.00	0.00	2.6%	2.0%	0.071	0.061	0.09%
Combined Group Contracting	0.368	-0.002	-0.54%	1.34	17.41	5.3%	63	31%	83%	0.02	0.06	7.7%	1.2%	0.399	0.138	0.17%
Sharjah Cement and Industrial Development	0.046	0.003	5.81%	0.23	27.30	11.5%	28	14%	8%	0.03	0.67	0.8%	0.6%	0.056	0.035	0.08%
KGL Logistics	0.032	0.000	0.00%	0.24	5.17	0.1%	24	0%	13%	0.00	0.00	4.6%	2.9%	0.034	0.023	0.07%
Kuwait and Gulf Link Transport	0.056	-0.002	-3.95%	0.23	16.94	0.0%	15	5%	6%	0.04	0.74	1.4%	0.4%	0.064	0.042	0.04%
Shuaiba Industrial	0.180	-0.008	-4.26%	1.01	55.94	5.5%	18	-3%	16%	0.00	0.00	1.8%	1.4%	0.195	0.122	0.05%
National Cleaning	0.060	-0.002	-3.71%	0.38	8.68	7.8%	14	-4%	12%	0.07	1.12	4.4%	1.5%	0.078	0.045	0.04%
Fujairah Cement Industries	0.036	0.003	9.06%	0.15	17.51	11.6%	13	13%	6%	0.04	1.23	0.8%	0.4%	0.043	0.028	0.04%
Hilal Cement	0.083	0.000	0.00%	0.72	-6.82	18.1%	8	8%	-9%	0.00	0.00	-10.6%	-6.2%	0.126	0.065	0.02%
Mubarrad Holding	0.105	-0.002	-1.87%	0.83	16.94	4.5%	17	17%	47%	0.08	0.80	4.9%	4.1%	0.112	0.053	0.05%
Specialities Group Holding	0.103	-0.001	-0.96%	0.56	12.24	0.0%	16	8%	32%	0.20	1.94	4.5%	3.5%	0.111	0.054	0.04%
National Ranges	0.040	-0.001	-1.96%	0.73	-2.92	0.0%	11	7%	114%	0.57	13.60	-24.9%	-5.3%	0.042	0.009	0.03%
Salbookh Trading	0.043	-0.001	-1.39%	0.58	-2.48	0.0%	4	0%	13%	0.01	0.33	-23.2%	-15.9%	0.047	0.026	0.01%
Metal and Recycling	0.190	0.001	0.53%	1.59	-8.06	0.0%	17	10%	258%	0.00	0.00	-19.7%	-10.1%	0.196	0.032	0.05%
Equipment Holding	0.037	-0.002	-4.94%	0.43	-247.88	0.0%	3	11%	24%	0.01	0.27	-0.2%	-0.1%	0.043	0.023	0.01%
Total Industrials - 28 Companies				1.29	18.59	3.4%	3,943			12.57	34.23	6.92%	5.16%			10.87%

DAILY MARKET COVERAGE REPORT

NIC MENA SECURITIES - RESEARCH AND STUDIES DEP



Insurance	Price			Valuation Multiples			MKT Cap	Price Performance		Trading Indicators		ROE	ROA	52 Week (KD)		MKT Cap
	Company	Close (KD)	Day Δ	Day % Δ	PBV(X)	PE(X)		DY%	Mn KD	MTD(%)	YTD (%)			Value (Mn KD)	(Mn Shrs)	
Gulf Insurance Group	0.757	-0.038	-4.78%	1.39	11.37	4.6%	152	14%	-6%	0.02	0.02	12.3%	1.7%	0.900	0.542	0.42%
Al Ahleia Insurance	0.480	0.001	0.21%	0.95	10.16	6.6%	104	-14%	7%	0.00	0.01	9.4%	3.3%	0.561	0.349	0.29%
Kuwait Insurance	0.390	-0.010	-2.50%	0.64	7.56	6.1%	72	5%	1%	0.01	0.03	8.5%	4.6%	0.435	0.300	0.20%
Kuwait Reinsurance	0.285	-0.014	-4.68%	1.17	13.19	1.4%	62	-23%	47%	0.00	0.00	8.9%	3.2%	0.527	0.174	0.17%
Bahrain Kuwait Insurance	0.191	0.000	0.00%	0.93	12.94	6.1%	29	0%	0%	0.00	0.00	7.2%	1.1%	0.191	0.191	0.08%
Warba Insurance	0.158	0.012	8.22%	0.69	22.41	0.0%	26	49%	96%	0.35	2.32	3.1%	1.0%	0.149	0.069	0.07%
First Takaful Insurance	0.052	-0.003	-4.98%	0.63	6.53	0.0%	5	-3%	39%	0.00	0.00	9.6%	5.9%	0.058	0.029	0.02%
Wethaq Takaful Insurance	0.029	-0.001	-1.71%	0.26	-36.17	0.0%	3	1%	41%	0.05	1.67	-0.7%	-0.7%	0.035	0.018	0.01%
Total Insurance - 8 Companies				0.96	10.80	4.6%	454			0.43	4.05	8.86%	3.00%			1.25%

Energy	Price			Valuation Multiples			MKT Cap	Price Performance		Trading Indicators		ROE	ROA	52 Week (KD)		MKT Cap
	Company	Close (KD)	Day Δ	Day % Δ	PBV(X)	PE(X)		DY%	Mn KD	MTD(%)	YTD (%)			Value (Mn KD)	(Mn Shrs)	
National Petroleum Services	0.909	0.000	0.00%	2.16	7.75	7.7%	88	-7%	-13%	0.00	0.00	27.9%	23.6%	1.199	0.855	0.24%
Independent Petroleum Group	0.605	-0.001	-0.17%	1.11	16.48	5.0%	109	19%	27%	0.00	0.00	6.8%	2.2%	0.669	0.375	0.30%
Burgan for Well Drilling Trading and Maintenanc	0.158	-0.003	-1.86%	0.57	16.05	0.0%	36	10%	2%	0.10	0.63	3.6%	1.1%	0.219	0.060	0.10%
Energy House Holding	0.043	-0.001	-1.60%	1.33	-5.91	0.0%	32	31%	52%	0.01	0.27	-22.5%	-17.0%	0.047	0.016	0.09%
Gulf Petroleum Investment	0.025	-0.002	-6.49%	0.27	-7.89	0.0%	11	2%	27%	0.16	6.16	-3.4%	-2.3%	0.028	0.014	0.03%
Senergy Holding	0.048	-0.002	-3.42%	0.96	-2.01	0.0%	10	24%	126%	0.10	2.01	-47.9%	-30.4%	0.053	0.015	0.03%
Total Energy - 6 Companies				1.03	33.31	4.3%	287			0.36	9.07	3.10%	2.18%			0.79%

Real Estate	Price			Valuation Multiples			MKT Cap	Price Performance		Trading Indicators		ROE	ROA	52 Week (KD)		MKT Cap
	Company	Close (KD)	Day Δ	Day % Δ	PBV(X)	PE(X)		DY%	Mn KD	MTD(%)	YTD (%)			Value (Mn KD)	(Mn Shrs)	
Mabane Co.	0.723	-0.007	-0.96%	1.79	15.01	1.3%	847	3%	17%	0.46	0.63	11.9%	5.8%	0.761	0.526	2.34%
Salhia Real Estate	0.519	0.000	0.00%	1.57	11.94	3.8%	257	1%	3%	0.08	0.16	13.2%	5.8%	0.599	0.339	0.71%
Commercial Real Estate	0.103	-0.002	-1.90%	0.61	12.39	5.7%	181	-5%	-9%	0.17	1.65	5.0%	2.7%	0.126	0.088	0.50%
National Real Estate	0.170	-0.001	-0.58%	0.94	22.37	0.0%	256	-7%	125%	1.36	7.95	4.2%	2.4%	0.200	0.061	0.71%
Tamdeen Real Estate	0.260	0.000	0.00%	0.37	12.67	3.9%	104	3%	-4%	0.01	0.03	3.0%	2.2%	0.336	0.235	0.29%
Kuwait Real Estate	0.133	0.000	0.00%	0.92	16.63	0.3%	117	-7%	22%	0.37	2.76	5.5%	2.2%	0.146	0.075	0.32%
United Real Estate	0.062	0.003	4.91%	0.36	-9.22	0.0%	67	7%	32%	0.05	0.75	-3.9%	-1.2%	0.070	0.041	0.18%

DAILY MARKET COVERAGE REPORT

NIC MENA SECURITIES - RESEARCH AND STUDIES DEP



Real estate Company	Price			Valuation Multiples			MKT Cap	Price Performance		Trading Indicators		ROE	ROA	52 Week (KD)		MKT Cap
	Close (KD)	Day Δ	Day % Δ	PBV(X)	PE(X)	DY%	Mn KD	MTD(%)	YTD (%)	Value (Mn KD)	(Mn Shrs)	(%)	(%)	High	Low	%
First Dubai for Real Estate Development	0.070	0.000	-0.29%	0.94	76.66	0.6%	70	7%	70%	0.03	0.42	1.2%	1.0%	0.078	0.033	0.19%
Al Mazaya Holding	0.085	0.003	3.94%	0.67	-6.07	0.1%	53	14%	48%	1.08	12.89	-11.0%	-3.8%	0.086	0.048	0.15%
Ajial Real Estate Entertainment	0.239	-0.006	-2.45%	0.37	23.10	0.0%	46	7%	31%	0.07	0.30	1.6%	1.4%	0.265	0.124	0.13%
Injazzat Real Estate Development	0.079	0.002	2.99%	0.51	-3.79	8.7%	26	9%	6%	0.00	0.00	-13.4%	-7.0%	0.087	0.067	0.07%
Munshaat Real Estate Projects	0.076	-0.002	-3.08%	0.51	27.82	2.8%	24	-2%	7%	0.00	0.01	1.8%	0.7%	0.121	0.045	0.07%
Aayan Real Estate	0.102	-0.002	-1.92%	0.60	19.96	4.7%	42	1%	76%	0.18	1.73	3.0%	1.9%	0.116	0.048	0.12%
Al Argan International Real Estate	0.112	0.000	0.00%	0.32	36.30	4.4%	29	4%	2%	0.00	0.00	0.9%	0.3%	0.112	0.071	0.08%
Al-Enmaa Real Estate	0.073	-0.001	-1.88%	0.73	19.30	0.0%	33	5%	51%	0.08	1.11	3.8%	2.4%	0.085	0.037	0.09%
Ream Real Estate	0.090	0.000	0.00%	0.69	-3.65	2.4%	10	0%	0%	0.00	0.00	-19.0%	-10.1%	0.204	0.060	0.03%
Arkan Al Kuwait Real Estate	0.105	-0.001	-0.94%	0.75	11.38	7.4%	26	0%	24%	0.00	0.01	6.6%	3.5%	0.143	0.078	0.07%
Kuwait Business Town Real Estate	0.083	-0.003	-3.84%	0.76	21.09	0.1%	52	10%	109%	0.09	1.13	3.6%	2.7%	0.089	0.022	0.14%
Dalqan Real Estate	0.274	0.000	0.00%	2.51	50.82	0.0%	17	0%	0%	0.00	0.00	4.9%	4.9%	0.318	0.274	0.05%
Sokouk Holding	0.023	0.000	0.00%	0.29	-3.89	0.0%	13	0%	0%	0.00	0.00	-7.4%	-4.7%	0.031	0.020	0.04%
Tijara and Realestate Investment	0.050	-0.001	-2.35%	0.47	13.10	4.0%	18	-2%	19%	0.10	1.95	3.6%	1.9%	0.058	0.037	0.05%
Al-Arabiya Real Estate	0.037	-0.002	-3.90%	0.32	11.22	1.7%	19	4%	44%	0.19	5.03	2.9%	1.1%	0.042	0.021	0.05%
Aqar Real Estate Investments	0.068	0.000	0.00%	0.49	5.68	7.3%	14	-1%	15%	0.00	0.00	8.7%	7.3%	0.077	0.056	0.04%
Mashaer Holding	0.074	-0.002	-3.03%	0.56	7.83	0.0%	13	6%	26%	0.02	0.33	7.1%	5.0%	0.083	0.052	0.04%
Investors Holding Group	0.018	0.000	-1.12%	0.89	-0.84	0.0%	11	15%	1%	0.15	8.59	-106.5%	-57.2%	0.032	0.012	0.03%
Dar Al Thuraya Real Estate	0.097	-0.007	-6.83%	0.92	25.54	0.0%	14	66%	53%	0.00	0.02	3.6%	3.6%	0.190	0.046	0.04%
Osos Holding Group	0.095	0.000	-0.42%	0.76	7.17	10.0%	10	-1%	6%	0.00	0.01	10.5%	7.0%	0.102	0.081	0.03%
Al Massaleh Real Estate	0.056	0.005	9.38%	0.63	-7.81	0.0%	13	8%	64%	0.03	0.47	-8.1%	-1.9%	0.085	0.026	0.04%
Kuwait Remal Real Estate	0.023	-0.001	-4.64%	0.34	-3.10	0.0%	7	11%	12%	0.01	0.64	-11.0%	-3.9%	0.028	0.013	0.02%
Kuwait Real Estate Holding	0.040	0.003	7.55%	0.06	1.07	4.5%	8	18%	60%	0.02	0.41	5.5%	2.2%	0.049	0.021	0.02%
Taameer Real Estate Investment	0.033	-0.001	-2.69%	0.48	-6.88	0.0%	7	-4%	63%	0.06	1.83	-7.0%	-4.5%	0.039	0.015	0.02%
Sanam Real Estate	0.049	0.000	0.00%	0.62	66.36	0.0%	6	-14%	42%	0.00	0.09	0.9%	0.9%	0.060	0.027	0.02%
Mena Real Estate	0.043	0.000	-0.92%	0.30	-95.99	0.0%	6	4%	55%	0.03	0.75	-0.3%	-0.2%	0.049	0.024	0.02%
Al Masaken International Real Estate Developr	0.038	-0.001	-1.56%	0.42	45.78	0.4%	4	3%	53%	0.03	0.72	0.9%	0.4%	0.045	0.021	0.01%
Real Estate Trade Centers	0.043	-0.004	-8.70%	0.24	245.68	0.0%	6	-20%	56%	0.00	0.06	0.1%	0.1%	0.069	0.024	0.02%
Ajwan Gulf Real Estate	0.011	0.000	0.00%	0.19	-7.68	0.0%	2	0%	0%	0.00	0.00	-2.5%	-2.2%	0.013	0.010	0.01%
Al Mudon International Real Estate	0.021	0.000	0.00%	0.16	-10.65	0.0%	2	0%	14%	0.00	0.00	-1.5%	-1.4%	0.027	0.016	0.01%
Total Real Estate - 37 Companies				0.81	23.97	2.0%	2,430			4.67	52.42	3.37%	3.29%			6.70%

DAILY MARKET COVERAGE REPORT

NIC MENA SECURITIES - RESEARCH AND STUDIES DEP



Technology	Price			Valuation Multiples			MKT Cap	Price Performance		Trading Indicators		ROE	ROA	52 Week (KD)		MKT Cap
	Company	Close (KD)	Day Δ	Day % Δ	PBV(X)	PE(X)		DY%	Mn KD	MTD(%)	YTD (%)			Value (Mn KD)	(Mn Shrs)	
Automated Systems	0.095	-0.004	-4.04%	0.75	-92.15	4.2%	10	-11%	37%	0.03	0.36	-0.8%	-0.7%	0.112	0.056	0.03%
Total Technology - 1 Companies				0.75	-92.15	4.2%	10			0.03	0.36	-0.81%	-0.73%			0.03%

Telecom	Price			Valuation Multiples			MKT Cap	Price Performance		Trading Indicators		ROE	ROA	52 Week (KD)		MKT Cap
	Company	Close (KD)	Day Δ	Day % Δ	PBV(X)	PE(X)		DY%	Mn KD	MTD(%)	YTD (%)			Value (Mn KD)	(Mn Shrs)	
Mobile Telecommunications	0.587	-0.002	-0.34%	1.96	11.71	5.3%	2,540	-3%	-3%	1.97	3.35	16.7%	4.6%	0.641	0.510	7.00%
Kuwait Telecommunications	0.830	0.000	0.00%	1.92	9.51	4.2%	414	-7%	-3%	0.11	0.14	20.2%	11.1%	0.970	0.820	1.14%
National Mobile Telecommunications	0.642	-0.001	-0.16%	0.56	10.68	10.1%	322	0%	2%	0.02	0.03	5.3%	2.4%	0.711	0.550	0.89%
AAN Digital Services	0.014	0.000	-2.04%	0.43	46.97	0.0%	12	23%	16%	0.68	47.10	0.9%	0.7%	0.016	0.010	0.03%
Hayat Communications	0.071	-0.001	-0.83%	0.61	30.14	0.0%	6	1%	28%	0.01	0.12	2.0%	0.8%	0.087	0.041	0.02%
Telecom - 5 Companies				1.55	11.32	5.6%	3,295			2.79	50.73	13.70%	7.86%			9.08%

Utilities	Price			Valuation Multiples			MKT Cap	Price Performance		Trading Indicators		ROE	ROA	52 Week (KD)		MKT Cap
	Company	Close (KD)	Day Δ	Day % Δ	PBV(X)	PE(X)		DY%	Mn KD	MTD(%)	YTD (%)			Value (Mn KD)	(Mn Shrs)	
Shamal Az-Zour Al-Oula Power & Water	0.249	-0.001	-0.40%	3.57	22.27	0.0%	274	-3%	-10%	0.35	1.39	16.1%	2.3%	0.500	0.245	0.76%
Total Utilities - 1 Companies				3.57	22.27	0.0%	274			0.35	1.39	16.06%	2.26%			0.76%

Total Market 165 Companies				1.46	17.30	3.35%	36,269			49.89	344.68	8.42%	2.78%			100%
-----------------------------------	--	--	--	-------------	--------------	--------------	---------------	--	--	--------------	---------------	--------------	--------------	--	--	-------------

End of Report

The information contained in this document is proprietary to NIC and is for use only by the persons to whom it is issued. This document is confidential and may not be distributed either in part or in whole without the express agreement of NIC. It is intended solely for the use of the individual or entity to whom it is addressed and others authorized to receive it.

Note : ROE and ROA is calculated based on LFY net profit & shareholders' equity and LFY Operating Profits & Total Assets

Sources : National Investments Company Research and Studies Departments, Boursa, Refinitiv.



شركة الاستثمار الوطنية
NATIONAL INVESTMENTS COMPANY

Sharq, Al Mutanabi Street, Khaleejia Tower | P.O. Box 25667, Safat 13117, Kuwait

T.: +965 2226 6666 | Fax: +965 2226 6793 | www.nic.com.kw