



شركة الاستثمار الوطنية
NATIONAL INVESTMENTS COMPANY

Bursa Kuwait – Daily Market Report MENA Securities – Research & Studies Dep.

21th December 2022



www.nic.com.kw

DAILY MARKET COVERAGE REPORT

NIC MENA SECURITIES - RESEARCH AND STUDIES DEP



Kuwait Market Watch

Wednesday, December 21, 2022

Index	Close	DTD Chg Net	DTD (%)	YTD (%)	52W High	52W Low	MKT CAP Bn (KD)	PBV (X)	PE (X)	DY (%)
All Share Index	7,205.61	-24.19	-0.33%	2.31%	8,472.15	6,861.80	42.80	1.94	24.95	4.15
Premier Index	7,999.55	-22.59	-0.28%	4.72%	9,437.37	7,510.50	33.44	2.01	20.22	4.70
Main Index	5,585.18	-30.53	-0.54%	-5.12%	6,600.62	5,190.37	9.36	1.66	41.83	2.19
NIC 50 Index	8,946.46	-27.59	-0.31%	4.98%	10,553.82	8,504.28	32.74	2.01	20.22	4.70

Index	Value Mn(KD)	Vlolume (Mn share)
All Share Index	34.59	124.75
Premier Index	27.32	62.39
Main Index	7.27	62.37
NIC 50 Index	34.88	124.19

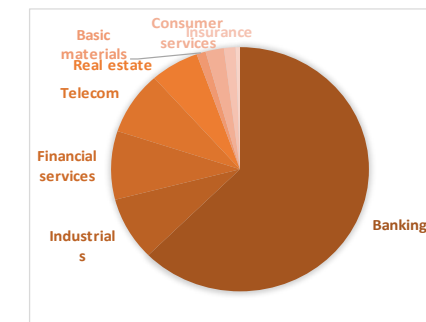
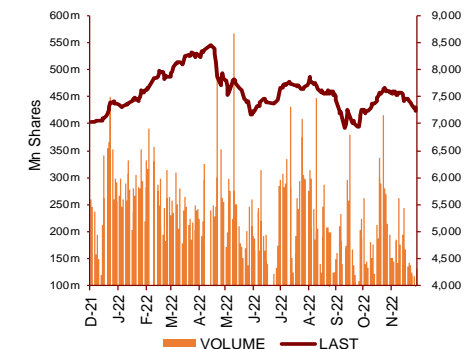
Market Breadth	UP ↑	Down ↓	No Chg ↔
All Share Index	54	47	50
Premier Index	16	7	1
Main Index	38	40	49
NIC 50 Index	29	16	5

Today's Top 5 Gainer %	Close KD	Value KD	DTD (%)
Wethaq Takaful Insurance	0.026	981	10.00%
Automated Systems	0.102	801.21	7.37%
Alafco Aviation Lease and Fina	0.204	452,745	5.70%
Aayan Leasing and Investment	0.134	1,208,552	5.51%
Aqar Real Estate Investments	0.065	7	5.01%

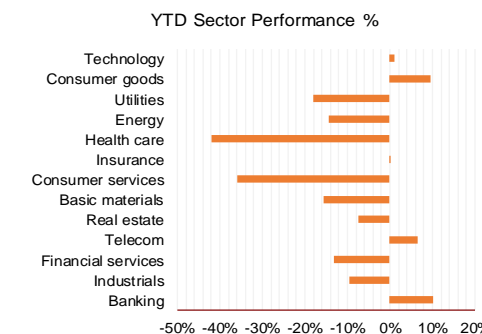
Today's Top 5 Loser %	Close KD	Value KD	DTD (%)
Warba Capital Holding	0.082	7,440	-11.30%
Kuwait and Middle East Fin:	0.093	14,926	-10.58%
Kuwait Syrian Holding Co	0.036	0	-5.00%
National Petroleum Service	0.940	94	-4.86%
National Mobile Telecommu	1.148	54,196	-4.25%

Today's Top 5 by Value	Close KD	Trade Val Mn(KD)	DTD (%)
Kuwait Finance House	0.804	11.46	-0.74%
Agility Public Warehousing	0.675	3.43	-0.44%
Warba Bank	0.230	1.73	2.22%
National Industries Group Hold	0.215	1.61	1.90%
National Bank of Kuwait	1.075	1.57	-0.37%

Top 5 by Volume	Close KD	Trade Vol Mn(Shrs)	DTD (%)
Kuwait Finance House	0.804	14.23	-0.74%
GFH Financial Group	0.076	11.59	0.67%
Aayan Leasing and Investm	0.134	9.25	5.51%
Kuwait Real Estate	0.106	8.01	0.95%
Warba Bank	0.230	7.60	2.22%



Sector	Close	DTD Chg Net	DTD (%)	YTD (%)	52W High	52W Low	MKT CAP Bn (KD)	PBV (X)	PE (X)	DY (%)
Banking	1,775.45	-10.030	-0.56%	10.0%	1,992.2	1,585.0	26.404	1.46	25.68	1.85
Industrials	1,035.55	4.030	0.39%	-9.6%	1,443.6	976.3	3.545	1.00	24.29	3.24
Financial services	1,240.88	3.120	0.25%	-13.0%	1,678.3	1,190.4	3.828	0.92	79.82	2.90
Telecom	1,154.24	-5.520	-0.48%	6.5%	1,514.7	1,082.8	3.532	1.70	13.37	2.84
Real estate	1,224.66	-2.520	-0.21%	-7.5%	1,413.0	1,155.8	2.581	0.70	29.60	1.31
Basic materials	873.87	8.500	0.98%	-15.6%	1,233.3	800.8	0.483	1.03	8.50	6.17
Consumer services	475.19	6.480	1.38%	-35.9%	741.0	443.8	0.973	2.14	12.91	2.16
Insurance	1,548.68	12.390	0.81%	0.2%	1,665.2	1,434.5	0.617	0.84	15.22	5.31
Health care	461.85	0.000	0.00%	-42.1%	821.7	420.4	0.229	38.31	13.99	1.14
Energy	1,192.62	-28.720	-2.35%	-14.5%	1,466.2	975.7	0.241	0.90	11.59	1.60
Utilities	492.11	0.000	0.00%	-18.0%	602.6	489.5	0.206	1.73	15.38	9.63
Consumer goods	1,473.13	7.850	0.54%	9.6%	1,641.0	1,300.3	0.144	0.97	NM	2.09
Technology	742.05	50.930	7.37%	1.1%	800.3	539.1	0.010	0.91	NM	-
	7,205.61	-24.19	-0.33%	2.3%	8,472.2	6,861.8	42.80	1.94	24.95	4.15



DAILY MARKET COVERAGE REPORT

NIC MENA SECURITIES - RESEARCH AND STUDIES DEP



Premier Market

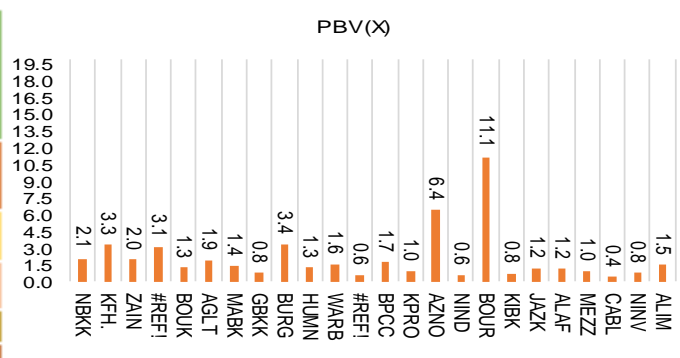
Wednesday, December 21, 2022

Premier Market	Price			Valuation Multiples			MKT Cap	Price Performance		Trading Indicators		ROE	ROA	52 Week (KD)		MKT Cap
	Close (KD)	Day Δ	Day % Δ	PBV(X)	PE(X)	DY%	Mn KD	MTD(%)	YTD (%)	Value (Mn KD)	(Mn Shrs)	(%)	(%)	High	Low	%
National Bank of Kuwait	1.075	-0.004	-0.37%	2.07	17.72	2.25	8,119	-4%	13%	1.57	1.45	11.7%	1.5%	1.143	0.933	24.28%
Kuwait Finance House	0.804	-0.006	-0.74%	3.32	27.13	1.35	10,729	-7%	6%	11.46	14.23	12.4%	1.6%	1.039	0.754	32.08%
Mobile Telecommunications	0.548	0.002	0.37%	1.97	12.61	6.04	2,371	-7%	-8%	1.09	1.98	15.7%	4.3%	0.698	0.546	7.09%
Boubyan Bank	0.793	-0.016	-1.98%	3.14	51.59	0.56	2,964	-6%	11%	1.16	1.46	6.8%	0.8%	0.965	0.695	8.86%
Agility Public Warehousing	0.675	-0.003	-0.44%	1.25	44.50	2.46	1,723	-14%	-14%	3.43	5.06	2.3%	1.9%	1.062	0.634	5.15%
Mabane Co.	0.858	0.003	0.35%	1.89	17.76	1.54	1,065	-3%	15%	0.08	0.10	11.1%	5.5%	0.910	0.720	3.19%
Gulf Bank	0.316	-0.003	-0.94%	1.44	16.59	2.09	1,011	-7%	19%	0.11	0.35	8.9%	0.9%	0.385	0.257	3.02%
Burgan Bank	0.214	0.001	0.47%	0.78	21.27	2.24	703	-7%	-10%	0.01	0.06	3.8%	0.7%	0.307	0.205	2.10%
Human Soft Holding	3.385	0.035	1.04%	3.40	7.13	11.94	412	1%	5%	0.17	0.05	49.6%	34.9%	3.704	3.006	1.23%
Warba Bank	0.230	0.005	2.22%	1.26	23.21	0.00	460	-7%	-16%	1.73	7.60	5.8%	0.6%	0.290	0.216	1.38%
Boubyan Petrochemical	0.809	0.009	1.13%	1.60	8.47	7.50	422	-1%	-5%	0.23	0.28	20.1%	10.5%	1.125	0.769	1.26%
Kuwait Projects Company Holding	0.110	0.004	3.77%	0.56	NM	4.72	534	-11%	-23%	0.51	4.61	-2.8%	0.0%	0.215	0.106	1.60%
Shamal Az-Zour Al-Oula Power & Water	0.187	0.000	0.00%	1.73	15.38	9.63	206	-5%	-18%	0.06	0.32	14.8%	2.7%	0.229	0.185	0.62%
National Industries Group Holding	0.215	0.004	1.90%	0.95	10.83	5.27	462	-11%	-11%	1.61	7.54	5.3%	2.9%	0.314	0.207	1.38%
Boursa Kuwait Securities Co	2.005	-0.045	-2.20%	6.43	20.86	3.17	403	-14%	-1%	0.46	0.22	32.4%	22.9%	2.870	1.880	1.20%
Kuwait International Bank	0.195	0.003	1.56%	0.62	35.14	2.00	207	-3%	-7%	0.57	2.92	1.7%	0.3%	0.259	0.186	0.62%
Jazeera Airways	1.879	0.027	1.46%	11.11	14.34	2.48	413	4%	46%	0.45	0.24	92.1%	11.6%	2.099	1.215	1.24%
Alafco Aviation Lease and Finance	0.204	0.011	5.70%	0.76	NM	0.00	194	1%	-6%	0.45	2.25	-15.9%	-3.4%	0.234	0.162	0.58%
Mezzan Holding	0.385	0.009	2.39%	1.22	NM	4.17	120	-1%	-33%	0.14	0.35	-7.2%	-2.8%	0.593	0.345	0.36%
Gulf Cable and Electrical Industries	1.191	0.017	1.45%	1.15	11.51	5.11	249	-9%	37%	0.18	0.15	10.2%	NM	1.850	0.860	0.74%
National Investments	0.241	0.001	0.42%	0.98	17.73	18.75	192	-11%	10%	0.06	0.25	5.4%	4.4%	0.475	0.211	0.57%
Alimti az Investment Group	0.072	-0.001	-0.69%	0.42	NM	12.50	73	-6%	-39%	0.05	0.74	-0.9%	-0.4%	0.138	0.069	0.22%
Kuwait Real Estate	0.106	0.001	0.95%	0.78	15.50	2.77	98	-4%	-39%	0.85	8.01	4.9%	1.9%	0.186	0.097	0.29%
Integrated Holding	0.368	0.007	1.94%	1.50	23.90	2.77	93	1%	-1%	0.71	1.94	6.4%	4.1%	0.478	0.321	0.28%
ALI ALGanim	0.800	0.000	0.00%	8.31	11.52	5.95	219	-5%	nm	0.18	0.23	30.5%	12.1%	0.966	0.750	0.66%
Total		-22.59	-0.28%	2.01	20.22	4.70	33,442	-5.5%	4.7%	27.32	62.16					100%

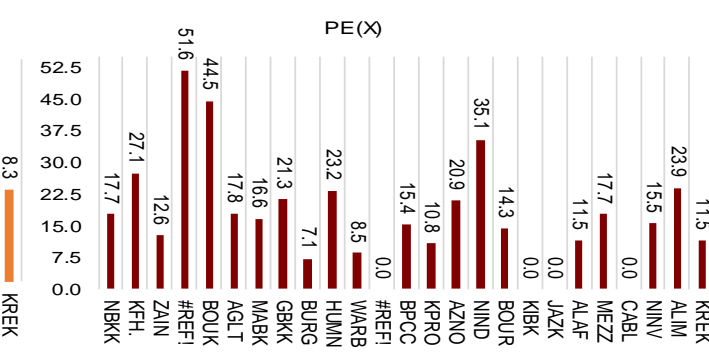
Market Capitalization



Price to Book Value

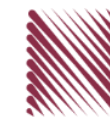


Price to Earning Value



DAILY MARKET COVERAGE REPORT

NIC MENA SECURITIES - RESEARCH AND STUDIES DEP



Premier Market	Price			Valuation Multiples			MKT Cap	Price Performance		ROE	ROA
Company	Close (KD)	Day Δ	Day % Δ	PBV(X)	PE (X)	DY%	Mn KD	MTD(%)	YTD (%)	(%)	(%)
National Bank of Kuwait	1.075	-0.004	-0.37%	2.07	17.7	2.25	8,119	-4.2%	13.2%	11.7%	1.5%
Kuwait Finance House	0.804	-0.006	-0.74%	3.32	27.1	1.35	10,729	-7.2%	6.3%	12.4%	1.6%
Mobile Telecommunications	0.548	0.002	0.37%	1.97	12.6	6.04	2,371	-6.6%	-7.9%	15.7%	4.3%
Boubyan Bank	0.793	-0.016	-1.98%	3.14	51.6	0.56	2,964	-6.0%	11.3%	6.8%	0.8%
Agility Public Warehousing	0.675	-0.003	-0.44%	1.25	44.5	2.46	1,723	-14.2%	-14.3%	2.3%	1.9%
Mabane Co.	0.858	0.003	0.35%	1.89	17.8	1.54	1,065	-2.6%	14.7%	11.1%	5.5%
Gulf Bank	0.316	-0.003	-0.94%	1.44	16.6	2.09	1,011	-6.8%	18.9%	8.9%	0.9%
Burgan Bank	0.214	0.001	0.47%	0.78	21.3	2.24	703	-6.6%	-10.5%	3.8%	0.7%
Human Soft Holding	3.385	0.035	1.04%	3.40	7.1	11.94	412	0.9%	5.0%	49.6%	34.9%
Warba Bank	0.230	0.005	2.22%	1.26	23.2	0.00	460	-7.3%	-16.1%	5.8%	0.6%
Boubyan Petrochemical	0.809	0.009	1.13%	1.60	8.5	7.50	422	-1.0%	-5.0%	20.1%	10.5%
Kuwait Projects Company Holding	0.110	0.004	3.77%	0.56	NM	4.72	534	-10.6%	-22.5%	-2.8%	0.0%
Shamal Az-Zour Al-Oula Power & Water	0.187	0.000	0.00%	1.73	15.4	9.63	206	-5.1%	-18.0%	14.8%	2.7%
National Industries Group Holding	0.215	0.004	1.90%	0.95	10.8	5.27	462	-10.8%	-10.8%	5.3%	2.9%
Boursa Kuwait Securities Co	2.005	-0.045	-2.20%	6.43	20.9	3.17	403	-13.6%	-0.7%	32.4%	22.9%
Kuwait International Bank	0.195	0.003	1.56%	0.62	35.1	2.00	207	-3.0%	-7.0%	1.7%	0.3%
Jazeera Airways	1.879	0.027	1.46%	11.11	14.3	2.48	413	4.4%	45.7%	92.1%	11.6%
Alafco Aviation Lease and Finance	0.204	0.011	5.70%	0.76	NM	0.00	194	1.5%	-6.4%	-15.9%	-3.4%
Mezzan Holding	0.385	0.009	2.39%	1.22	NM	4.17	120	-1.3%	-33.3%	-7.2%	-2.8%
Gulf Cable and Electrical Industries	1.191	0.017	1.45%	1.15	11.5	5.11	249	-9.4%	36.7%	10.2%	8.4%
National Investments	0.241	0.001	0.42%	0.98	17.7	18.75	192	-11.1%	10.0%	5.4%	4.4%
Alimtiq Investment Group	0.072	-0.001	-0.69%	0.42	NM	12.50	73	-6.2%	-39.4%	-0.9%	-0.4%
Kuwait Real Estate	0.106	0.001	0.95%	0.78	15.5	2.77	98	-3.6%	-39.0%	4.9%	1.9%
Integrated Holding	0.368	0.007	1.94%	1.50	23.9	2.77	93	0.5%	-0.5%	6.4%	4.1%
ALI ALGanim	0.800	0.000	0.00%	4.01	11.5	5.95	219	-5.1%	nm	30.5%	12.1%
Total		-22.59	-0.28%	2.01	20.22	4.70	33,223	-5.5%	4.7%		

	Premier Market	Price			Moving Average		RSI	MKT Cap	Price Performance		52 Week (KD)	
.bqp	Discription	Close (KD)	Day Δ	Day % Δ	50 Day	200 Day	14 Day	Mn KD	MTD(%)	YTD (%)	High	Low
	Premier Index	8,000	-22.59	-0.28%	8,273	8,509	13	33,223	-5.5%	5.1%	9,437	7,511

Top 5 Performrs (Today's Price Change)

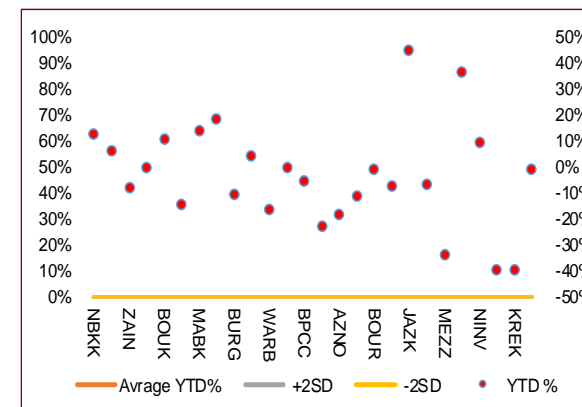
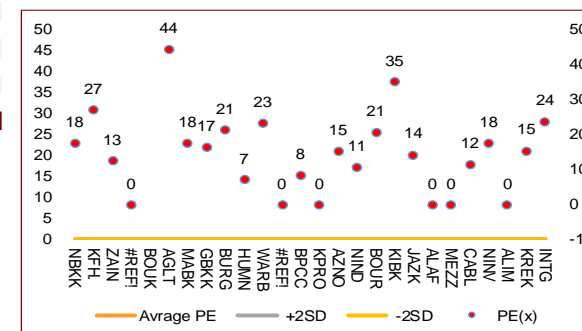
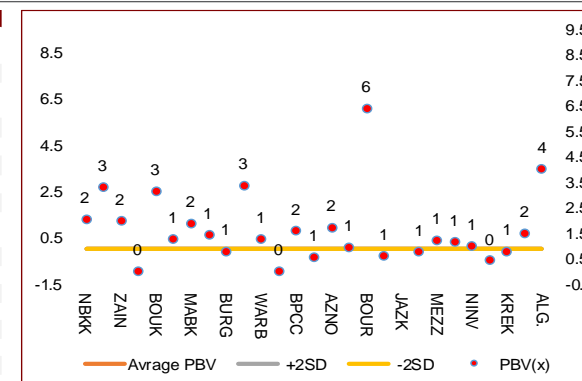
ALAF.KW	Alafco Aviation Lease and Finance	0.204	0.011	5.70%	0.183	0.197	49	194	1.5%	-6.4%	0.234	0.162
KPRO.KW	Kuwait Projects Company Holding	0.110	0.004	3.77%	0.121	0.155	22	534	-10.6%	-22.5%	0.215	0.106
MEZZ.KW	Mezzan Holding	0.385	0.009	2.39%	0.378	0.454	48	120	-1.3%	-33.3%	0.593	0.345
WARB.KW	Warba Bank	0.230	0.005	2.22%	0.243	0.254	26	460	-7.3%	-16.1%	0.290	0.216
INTG.KW	Integrated Holding	0.368	0.007	1.94%	0.351	0.393	54	93	0.5%	-0.5%	0.478	0.321

Middel Performrs (Today's Price Change)

NIND.KW	National Industries Group Holding	0.215	0.004	1.90%	0.235	0.257	21	462	-10.8%	-10.8%	0.314	0.207
KIBK.KW	Kuwait International Bank	0.195	0.003	1.56%	0.196	0.216	42	207	-3.0%	-7.0%	0.259	0.186
CABL.KW	Gulf Cable and Electrical Industries	1.191	0.017	1.45%	1.225	1.378	33	249	-9.4%	36.7%	1.850	0.860
BPCC.KW	Boubyan Petrochemical	0.809	0.009	1.13%	0.808	0.918	40	422	-1.0%	-5.0%	1.125	0.769
HUMN.KW	Human Soft Holding	3.385	0.035	1.04%	3.366	3.329	51	412	0.9%	5.0%	3.704	3.006
KREK.KW	Kuwait Real Estate	0.106	0.001	0.95%	0.109	0.133	36	98	-3.6%	-39.0%	0.186	0.097
NINV.KW	National Investments	0.241	0.001	0.42%	0.255	0.312	11	192	-11.1%	10.0%	0.475	0.211
ZAIN.KW	Mobile Telecommunications	0.548	0.002	0.37%	0.100	0.100	17	2,371	-6.6%	-7.9%	1.210	0.996
MABK.KW	Mabane Co.	0.858	0.003	0.35%	0.871	0.835	37	1,065	-2.6%	14.7%	0.910	0.720
ALG.KW	ALI ALGanim	0.800	0.000	0.00%	0.815	#VALUE!	26	219	-5.1%	#VALUE!	0.966	0.750
NBKK.KW	National Bank of Kuwait	1.075	-0.004	-0.37%	1.092	1.058	24	8,119	-4.2%	13.2%	1.143	0.933
AGLT.KW	Agility Public Warehousing	0.675	-0.003	-0.44%	0.758	0.843	4	1,723	-14.2%	-14.3%	1.062	0.634

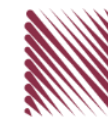
Bottom 5 Performrs (Today's Price Change)

ALIMK.KW	Alimtiq Investment Group	0.072	-0.001	-0.69%	0.077	0.098	22	73	-6.2%	-39.4%	0.138	0.069
KFH.KW	Kuwait Finance House	0.804	-0.006	-0.74%	0.832	0.879	19	10,729	-7.2%	6.3%	1.039	0.754
GBKK.KW	Gulf Bank	0.316	-0.003	-0.94%	0.336	0.331	27	1,011	-6.8%	18.9%	0.385	0.257
BOUK.KW	Boubyan Bank	0.793	-0.016	-1.98%	0.824	0.825	27	2,964	-6.0%	11.3%	0.965	0.695
BOURSA.KW	Boursa Kuwait Securities Co	2.005	-0.045	-2.20%	2.268	2.397	2	403	-13.6%	-0.7%	2.870	1.880



DAILY MARKET COVERAGE REPORT

NIC MENA SECURITIES - RESEARCH AND STUDIES DEP



Banking Sector	Price			Valuation Multiples			MKT Cap	Price Performance		Trading Indicators		ROE	ROA	52 Week (KD)		MKT Cap
Company	Close (KD)	Day Δ	Day % Δ	PBV(X)	PE(X)	DY%	Mn KD	MTD(%)	YTD (%)	Value (Mn KD)	(Mn Shrs)	(%)	(%)	High	Low	%
National Bank of Kuwait	1.075	-0.004	-0.37%	2.07	17.72	2.25	8,119	-4.2%	13.2%	1.57	1.45	11.7%	1.5%	1.143	0.933	18.97%
Kuwait Finance House	0.804	-0.006	-0.74%	3.32	27.13	1.35	10,729	-7.2%	6.3%	11.46	14.23	12.4%	1.6%	1.039	0.754	25.07%
Boubyan Bank	0.793	-0.016	-1.98%	3.14	51.59	0.56	2,964	-6.0%	11.3%	1.16	1.46	6.8%	0.8%	0.965	0.695	6.93%
Commercial Bank of Kuwait	0.509	0.000	0.00%	1.50	18.22	3.93	1,008	9.5%	1.6%	0.00	0.00	7.5%	1.3%	0.549	0.447	2.36%
Gulf Bank	0.316	-0.003	-0.94%	1.44	16.59	2.09	1,011	-6.8%	18.9%	0.11	0.35	8.9%	0.9%	0.385	0.257	2.36%
Burgan Bank	0.214	0.001	0.47%	0.78	21.27	2.24	703	-6.6%	-10.5%	0.01	0.06	3.8%	0.7%	0.307	0.205	1.64%
Ahli United Bank	0.284	0.001	0.35%	0.96	25.04	1.68	640	-2.1%	-3.5%	0.05	0.17	3.8%	0.8%	0.324	0.250	1.49%
Warba Bank	0.230	0.005	2.22%	1.26	23.21	0.00	460	-7.3%	-16.1%	1.73	7.60	5.8%	0.6%	0.290	0.216	1.07%
Al Ahli Bank of Kuwait	0.318	-0.004	-1.24%	0.94	20.89	1.48	563	-5.6%	31.5%	0.57	1.78	4.5%	0.6%	0.355	0.220	1.32%
Kuwait International Bank	0.195	0.003	1.56%	0.62	35.14	2.00	207	-3.0%	-7.0%	0.57	2.92	1.7%	0.3%	0.259	0.186	0.48%
Total Banking Sector - 10 Companies							26,404			17.24	30.02					61.70%

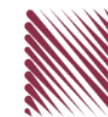
Basic Materials	Price			Valuation Multiples			MKT Cap	Price Performance		Trading Indicators		ROE	ROA	52 Week (KD)		MKT Cap
Company	Close (KD)	Day Δ	Day % Δ	PBV(X)	PE(X)	DY%	Mn KD	MTD(%)	YTD (%)	Value (Mn KD)	(Mn Shrs)	(%)	(%)	High	Low	%
Boubyan Petrochemical	0.809	0.009	1.13%	1.60	8.47	7.50	422	-0.98%	-5.05%	0.23	0.28	20.1%	10.5%	1.125	0.769	0.99%
Al Kout Industrial Projects	0.390	0.000	0.00%	1.28	4.49	10.26	39	0.00%	-21.37%	0.00	0.00	31.0%	21.9%	0.545	0.390	0.09%
Kuwait Foundry	0.296	0.000	0.00%	1.22	12.56	0.00	21	-0.67%	-19.78%	0.00	0.00	10.8%	10.4%	0.424	0.260	0.05%
Total Basic Materials - 3 Companies							483			0.23	0.28					1.13%

Consumer Goods	Price			Valuation Multiples			MKT Cap	Price Performance		Trading Indicators		ROE	ROA	52 Week (KD)		MKT Cap
Company	Close (KD)	Day Δ	Day % Δ	PBV(X)	PE(X)	DY%	Mn KD	MTD(%)	YTD (%)	Value (Mn KD)	(Mn Shrs)	(%)	(%)	High	Low	%
Mezzan Holding	0.385	0.009	2.39%	1.22	NM	4.17	120	-1.3%	-33.3%	0.14	0.35	-7.2%	-2.8%	0.593	0.345	0.28%
Livestock Transport and Trading	0.115	-0.004	-3.36%	0.71	NM	0.00	24	-9.4%	-36.8%	0.00	0.03	-14.5%	-8.2%	0.183	0.112	0.06%
Total Consumer Goods - 2 Companies							144			0.14	0.38					0.34%

Consumer Services	Price			Valuation Multiples			MKT Cap	Price Performance		Trading Indicators		ROE	ROA	52 Week (KD)		MKT Cap
Company	Close (KD)	Day Δ	Day % Δ	PBV(X)	PE(X)	DY%	Mn KD	MTD(%)	YTD (%)	Value (Mn KD)	(Mn Shrs)	(%)	(%)	High	Low	%
Jazeera Airways	1.879	0.027	1.46%	11.11	14.34	2.48	413	4.4%	45.7%	0.45	0.24	92.1%	11.6%	2.099	1.215	0.97%
Kuwait National Cinema	0.969	0.000	0.00%	1.15	10.35	3.10	90	-3.0%	9.9%	0.00	0.00	11.6%	5.3%	1.133	0.850	0.21%
Oula Fuel Marketing	0.144	0.000	0.00%	0.91	15.35	3.47	58	-1.4%	-7.7%	0.00	0.02	5.6%	2.9%	0.168	0.140	0.14%
Al Soor Fuel Marketing	0.142	0.000	0.00%	0.87	17.93	3.52	57	-1.4%	-8.4%	0.00	0.00	4.7%	3.5%	0.167	0.141	0.13%
Sultan Center Food Products	0.109	0.000	0.00%	0.69	NM	0.00	30	-8.4%	-48.1%	0.00	0.01	-23.2%	-5.5%	0.230	0.103	0.07%
Jiyad Holding	0.021	-0.001	-2.35%	0.24	NM	0.00	4	-12.2%	-74.2%	0.02	1.17	-16.5%	-11.4%	0.089	0.015	0.01%
IFA Hotels and Resorts	0.028	-0.001	-2.07%	2.78	4.32	0.00	18	-2.1%	-46.9%	0.01	0.38	65.1%	2.5%	0.065	0.025	0.04%
Kuwait Resorts	0.081	0.001	1.38%	0.52	12.33	3.68	16	-2.1%	-16.0%	0.00	0.01	4.2%	3.8%	0.104	0.067	0.04%
Future Kid Entertainment and Real Estate	0.107	-0.003	-2.73%	0.90	8.21	0.00	12	-10.8%	36.0%	0.00	0.01	11.6%	5.5%	0.133	0.077	0.03%
Al Eid Food	0.245	-0.001	-0.41%	1.88	14.59	2.78	41	2.1%	6.2%	0.11	0.46	13.4%	10.2%	0.304	0.207	0.10%
Kuwait Hotels	0.162	0.000	0.00%	1.95	20.12	3.09	9	-4.7%	131.4%	0.00	0.00	9.9%	6.4%	0.201	0.070	0.02%
Palms Agro Production	0.078	0.000	0.00%	0.78	NM	0.00	4	0.0%	14.4%	0.00	0.00	-9.5%	-7.6%	0.083	0.043	0.01%
ALI ALGanim	0.800	0.000	0.00%	4.01	11.52	5.95	219	-5.1%	nm	0.18	0.23	30.5%	12.1%	0.966	0.750	0.51%
Total Consumer Services - 13 Companies							973			0.78	2.52					2.27%

DAILY MARKET COVERAGE REPORT

NIC MENA SECURITIES - RESEARCH AND STUDIES DEP



Financial Services	Price			Valuation Multiples			MKT Cap	Price Performance		Trading Indicators		ROE	ROA	52 Week (KD)		MKT Cap
	Company	Close (KD)	Day Δ	Day % Δ	PBV(X)	PE(X)	DY%	Mn KD	MTD(%)	YTD (%)	Value (Mn KD)	(Mn Shrs)	(%)	(%)	High	Low
Egypt Kuwait Holding	0.370	-0.005	-1.33%	2.10	5.62	5.70	417	-2.1%	-12.7%	0.01	0.03	37.3%	17.3%	0.449	0.353	0.97%
Kuwait Projects Company Holding	0.110	0.004	3.77%	0.56	NM	4.72	534	-10.6%	-22.5%	0.51	4.61	-2.8%	0.0%	0.215	0.106	1.25%
National Industries Group Holding	0.215	0.004	1.90%	0.95	10.83	5.27	462	-10.8%	-10.8%	1.61	7.54	5.3%	2.9%	0.314	0.207	1.08%
Boursa Kuwait Securities Co	2.005	-0.045	-2.20%	6.43	20.86	3.17	403	-13.6%	-0.7%	0.46	0.22	32.4%	22.9%	2.870	1.880	0.94%
GFH Financial Group	0.076	0.001	0.67%	0.88	9.15	4.83	263	-7.8%	-23.1%	0.87	11.59	9.4%	1.2%	0.109	0.073	0.61%
National Investments	0.241	0.001	0.42%	0.98	17.73	18.75	192	-11.1%	10.0%	0.06	0.25	5.4%	4.4%	0.475	0.211	0.45%
Tamdeen Investment	0.610	0.000	0.00%	0.66	15.97	1.64	205	-2.2%	60.9%	0.00	0.00	4.4%	3.5%	0.625	0.309	0.48%
Alimtiq Investment Group	0.072	-0.001	-0.69%	0.42	NM	12.50	73	-6.2%	-39.4%	0.05	0.74	-0.9%	-0.4%	0.138	0.069	0.17%
Commercial Facilities	0.178	-0.002	-1.11%	0.57	8.79	8.33	90	0.0%	-13.6%	0.00	0.02	6.5%	3.6%	0.228	0.165	0.21%
Aayan Leasing and Investment	0.134	0.007	5.51%	0.99	12.69	0.00	89	-6.9%	-19.0%	1.21	9.25	8.2%	6.0%	0.204	0.104	0.21%
Kuwait Investment	0.140	0.001	0.72%	0.69	29.17	17.99	77	1.4%	-50.2%	0.33	2.35	2.2%	2.1%	0.300	0.113	0.18%
Noor Financial Investment	0.186	-0.004	-2.11%	1.17	5.25	2.53	95	-4.6%	-26.9%	0.03	0.14	22.0%	16.2%	0.295	0.163	0.22%
Arzan Financial Group for Financing and Investmei	0.110	-0.003	-2.65%	0.76	8.09	2.14	88	-9.8%	-29.3%	0.33	2.93	9.4%	7.0%	0.180	0.109	0.21%
Kuwait Financial Centre	0.108	0.001	0.93%	0.53	31.40	8.90	54	-5.3%	-37.3%	0.02	0.15	1.7%	1.7%	0.187	0.101	0.13%
Gulf Investment House	0.399	-0.014	-3.39%	3.80	1,596.00	0.00	162	1.3%	33.0%	0.02	0.04	0.2%	0.6%	0.464	0.217	0.38%
Arabi Group Holdings	0.318	0.003	0.95%	1.88	NM	0.00	54	14.0%	9.3%	0.22	0.68	-22.8%	-3.1%	0.499	0.200	0.13%
Kuwait and Middle East Financial Investment	0.093	-0.011	-10.58%	0.80	12.52	6.73	20	-1.1%	-38.0%	0.01	0.16	6.4%	3.1%	0.175	0.090	0.05%
Privatization Holding	0.033	-0.001	-3.22%	0.28	NM	0.00	20	-9.6%	-39.6%	0.00	0.04	-6.7%	-5.5%	0.063	0.032	0.05%
Asiya Capital Investments	0.049	0.001	2.51%	0.45	3.11	0.00	38	-5.6%	-5.6%	0.09	1.78	15.5%	15.2%	0.071	0.037	0.09%
Umm Al Qaiwain General Investment Co	0.096	0.000	0.00%	0.59	6.38	5.20	35	0.0%	10.4%	0.00	0.00	9.8%	8.1%	0.108	0.086	0.08%
Securities House	0.071	0.003	3.64%	0.73	13.11	0.00	30	2.4%	-27.9%	0.18	2.54	5.5%	4.7%	0.105	0.052	0.07%
Kamco Investment	0.103	0.003	2.49%	0.57	5.95	9.95	35	0.0%	-20.2%	0.02	0.15	9.8%	4.6%	0.167	0.089	0.08%
First Investment	0.063	0.000	-0.32%	0.57	71.59	0.00	28	-13.1%	-25.2%	0.07	1.11	0.8%	0.8%	0.104	0.061	0.07%
Inovest BSC Public	0.085	-0.001	-0.82%	0.00	NM	0.00	25	-11.0%	-28.0%	0.01	0.10	2.9%	1.8%	0.189	0.070	0.06%
Coast Investment and Development	0.082	0.001	0.86%	0.84	25.77	6.13	38	0.0%	-21.7%	0.00	0.00	3.2%	3.1%	0.125	0.066	0.09%
Al Madar Investment	0.104	0.000	0.00%	0.98	52.53	0.00	22	4.0%	-12.6%	0.00	0.00	1.9%	1.9%	0.120	0.083	0.05%
Bayan Investment	0.041	0.000	0.00%	0.31	NM	0.00	13	0.0%	-28.7%	0.00	0.00	-2.4%	-1.5%	0.061	0.036	0.03%
Al Manar Financing and Leasing	0.059	0.000	0.00%	0.57	12.47	0.00	16	-4.8%	-5.3%	0.00	0.00	4.3%	3.6%	0.079	0.049	0.04%
Manazel Holding	0.027	-0.001	-2.93%	0.60	8.28	0.00	11	-12.0%	-48.2%	0.01	0.41	7.0%	2.2%	0.059	0.025	0.03%
Kuwait Finance and Investment	0.064	0.000	0.16%	0.49	NM	0.00	21	0.5%	-25.9%	0.00	0.05	-1.6%	-1.1%	0.097	0.055	0.05%
National International Holding	0.122	0.000	0.00%	0.74	16.76	3.98	27	7.0%	-17.3%	0.22	1.79	4.1%	2.8%	0.167	0.091	0.06%
Osoul Investment	0.097	0.000	0.00%	0.86	NM	10.96	12	9.8%	18.2%	0.00	0.00	-2.0%	-1.8%	0.118	0.062	0.03%
UniCap Investment and Finance	0.063	0.001	1.13%	0.71	73.53	0.00	14	-1.4%	-8.8%	0.00	0.01	1.9%	0.2%	0.079	0.050	0.03%
Amar Finance and Leasing	0.063	0.000	0.00%	0.60	5.34	0.00	12	-0.2%	-4.1%	0.00	0.00	11.8%	11.0%	0.080	0.058	0.03%
Gulf North Africa Holding	0.169	0.005	3.05%	1.72	59.40	0.00	20	1.8%	96.3%	0.20	1.23	3.0%	2.4%	0.141	0.057	0.05%
International Financial Advisors	0.099	0.000	-0.10%	0.63	8.18	0.00	25	-4.2%	-12.7%	0.40	4.00	8.2%	3.4%	0.127	0.082	0.06%
Credit Rating and Collection	0.022	0.000	0.00%	0.77	NM	0.00	4	-1.8%	-45.3%	0.00	0.00	-0.5%	-0.4%	0.044	0.014	0.01%
Ekttitab Holding	0.010	0.000	-2.80%	0.34	NM	0.00	3	-5.5%	-51.2%	0.01	0.54	-17.2%	-13.2%	0.021	0.009	0.01%
Kuwait Syrian Holding Co	0.036	-0.002	-5.00%	0.34	5.71	0.00	6	-1.9%	-15.7%	0.00	0.00	8.6%	6.2%	0.057	0.026	0.01%
Warba Capital Holding	0.082	-0.010	-11.30%	0.91	NM	0.00	8	-12.5%	-5.1%	0.01	0.09	-0.4%	-0.4%	0.108	0.070	0.02%
National Consumer Holding	0.109	-0.001	-0.91%	1.18	NM	0.00	33	-9.9%	-9.1%	0.18	1.61	-2.3%	-2.3%	0.158	0.097	0.08%
Al Deera Holding	0.160	-0.006	-3.61%	1.16	10.54	0.00	15	-3.0%	-20.0%	0.00	0.01	9.0%	4.8%	0.200	0.143	0.03%
AL Safat Investment	0.105	0.002	1.94%	1.37	NM	0.00	30	-14.6%	-13.9%	0.01	0.14	-2.8%	-2.1%	0.270	0.091	0.07%
Gulf Franchising Holding	0.097	0.000	0.00%	1.23	3.65	0.00	4	-2.9%	1.1%	0.00	0.00	40.5%	13.1%	0.148	0.063	0.01%
Total Financial Services - 44 Companies							3,823			7.12	56.29					8.93%

DAILY MARKET COVERAGE REPORT

NIC MENA SECURITIES - RESEARCH AND STUDIES DEP



Health Care	Price			Valuation Multiples			MKT Cap	Price Performance		Trading Indicators		ROE	ROA	52 Week (KD)		MKT Cap
	Company	Close (KD)	Day Δ	Day % Δ	PBV(X)	PE(X)		DY%	Mn KD	MTD(%)	YTD (%)			Value (Mn KD)	(Mn Shrs)	
Al-Maidan Clinic for Oral Health Services	0.690	0.000	0.00%	2.62	16.05	0.00	155	-0.6%	-49.9%	0.00	0.00	17.7%	11.4%	1.400	0.556	0.36%
Advanced Technology	0.440	0.000	0.00%	0.98	11.92	3.41	66	7.6%	-15.1%	0.00	0.00	8.4%	1.7%	0.595	0.400	0.15%
Yiaco Medical	4.853	0.000	0.00%	111.34	NM	0.00	8	0.0%	2.7%	0.00	0.00	-178.5%	-3.6%	5.177	4.303	0.02%
Total Health Care - 3 Companies							229			0.00	0.00					0.54%

Industrials	Price			Valuation Multiples			MKT Cap	Price Performance		Trading Indicators		ROE	ROA	52 Week (KD)		MKT Cap
	Company	Close (KD)	Day Δ	Day % Δ	PBV(X)	PE(X)		DY%	Mn KD	MTD(%)	YTD (%)			Value (Mn KD)	(Mn Shrs)	
Agility Public Warehousing	0.675	-0.003	-0.44%	1.25	44.50	2.46	1,723	-14.2%	-14.3%	3.43	5.06	2.3%	1.9%	1.062	0.634	4.03%
Human Soft Holding	3.385	0.035	1.04%	3.40	7.13	11.94	412	0.9%	5.0%	0.17	0.05	49.6%	34.9%	3.704	3.006	0.96%
Alafco Aviation Lease and Finance	0.204	0.011	5.70%	0.76	NM	0.00	194	1.5%	-6.4%	0.45	2.25	-15.9%	-3.4%	0.234	0.162	0.45%
Kuwait Cement	0.213	0.000	0.00%	0.79	151.06	2.35	152	-7.4%	-7.8%	0.00	0.02	0.5%	0.3%	0.295	0.194	0.35%
Gulf Cable and Electrical Industries	1.191	0.017	1.45%	1.15	11.51	5.11	249	-9.4%	36.7%	0.18	0.15	10.2%	8.4%	1.850	0.860	0.58%
Integrated Holding	0.368	0.007	1.94%	1.50	23.90	2.77	93	0.5%	-0.5%	0.71	1.94	6.4%	4.1%	0.478	0.321	0.22%
Kuwait Portland Cement	0.810	-0.002	-0.25%	1.11	16.72	8.62	81	-1.5%	-17.3%	0.01	0.01	6.6%	4.8%	1.240	0.751	0.19%
Educational Holding Group	2.570	0.000	0.00%	3.98	9.09	0.00	54	2.8%	-35.8%	0.00	0.00	30.4%	18.3%	4.431	2.300	0.13%
United Projects for Aviation Services	0.200	0.001	0.50%	0.72	43.20	0.00	76	-1.5%	-19.4%	0.00	0.00	1.7%	1.0%	0.290	0.182	0.18%
Heavy Engineering Industries and Shipbuilding	0.620	0.002	0.32%	1.63	20.54	3.24	112	-9.6%	21.8%	0.05	0.08	8.1%	3.2%	0.960	0.500	0.26%
National Industries	0.180	0.000	0.00%	0.74	11.35	5.56	63	-8.2%	-6.7%	0.00	0.00	6.5%	4.7%	0.260	0.172	0.15%
ACICO Industries	0.086	0.002	2.14%	0.44	NM	0.00	28	-2.5%	-38.3%	0.03	0.31	-15.4%	-3.0%	0.208	0.076	0.07%
Kuwait Company for Process Plant Construction a	0.300	-0.004	-1.32%	1.17	16.84	8.15	36	-0.7%	-36.7%	0.00	0.00	6.9%	4.1%	0.513	0.286	0.08%
Ras Al Khaimah for White Cement and Constructi	0.133	0.000	0.00%	1.13	31.03	6.24	67	-4.3%	5.6%	0.02	0.15	3.6%	3.0%	0.175	0.113	0.16%
Combined Group Contracting	0.440	0.002	0.46%	1.56	8.39	5.71	75	0.7%	24.3%	0.04	0.10	19.6%	4.8%	0.500	0.339	0.18%
Kuwait and Gulf Link Transport	0.062	0.002	2.65%	0.37	2.13	0.00	17	-2.2%	-9.1%	0.00	0.00	18.8%	4.3%	0.089	0.054	0.04%
Shuaiba Industrial	0.150	-0.002	-1.32%	0.80	11.49	7.89	15	-2.0%	-33.3%	0.00	0.03	7.0%	5.7%	0.310	0.137	0.03%
National Cleaning	0.036	0.001	2.25%	0.29	NM	0.00	8	-4.0%	-36.0%	0.00	0.01	-12.6%	-3.7%	0.063	0.031	0.02%
Mubarrad Holding	0.079	0.000	0.00%	0.60	8.29	6.37	13	-3.2%	-28.6%	0.00	0.02	7.3%	6.5%	0.120	0.071	0.03%
Specialities Group Holding	0.108	0.001	0.93%	0.56	6.45	6.35	17	-0.9%	-13.1%	0.01	0.14	8.8%	6.0%	0.152	0.076	0.04%
Salbookh Trading	0.016	0.000	1.86%	0.54	NM	0.00	2	1.2%	-62.2%	0.00	0.01	-52.7%	-28.8%	0.045	0.014	0.00%
Metal and Recycling	0.049	-0.002	-3.73%	0.63	NM	0.00	4	-38.6%	-48.3%	0.00	0.02	-5.7%	0.0%	0.104	0.047	0.01%
Equipment Holding	0.048	0.000	0.00%	0.78	NM	0.00	4	-8.7%	-12.8%	0.00	0.01	-8.7%	-2.4%	0.067	0.030	0.01%
Jassim Transport & Stevedoring	0.338	0.000	0.00%	1.12	13.52	4.73	51	-2.0%	-17.0%	0.01	0.12	8.6%	6.7%	0.410	0.300	0.12%
Total Industrials - 23 Companies							3,545			5.13	10.46					8.28%

DAILY MARKET COVERAGE REPORT

NIC MENA SECURITIES - RESEARCH AND STUDIES DEP



Insurance	Price			Valuation Multiples			MKT Cap	Price Performance		Trading Indicators		ROE	ROA	52 Week (KD)		MKT Cap
	Company	Close (KD)	Day Δ	Day % Δ	PBV(X)	PE(X)		DY%	Mn KD	MTD(%)	YTD (%)			Value (Mn KD)	(Mn Shrs)	
Gulf Insurance Group	1.015	0.015	1.50%	1.05	10.09	10.60	288	1.5%	-5.1%	0.00	0.00	11.7%	2.5%	1.070	0.943	0.67%
Al Ahleia Insurance	0.499	0.003	0.60%	0.81	6.64	7.06	108	-0.2%	-1.2%	0.06	0.12	12.5%	4.5%	0.612	0.453	0.25%
Kuwait Insurance	0.518	-0.004	-0.77%	0.78	7.71	6.32	96	-3.4%	33.9%	0.02	0.05	10.3%	6.2%	0.627	0.379	0.22%
Kuwait Reinsurance	0.288	0.000	0.00%	1.02	9.43	1.59	69	2.1%	14.2%	0.00	0.00	11.3%	3.6%	0.373	0.217	0.16%
Bahrain Kuwait Insurance	0.191	0.000	0.00%	1.21	11.01	8.44	29	0.0%	0.0%	0.00	0.00	10.9%	2.2%	0.191	0.191	0.07%
Warba Insurance and Reinsurance	0.121	0.003	2.54%	0.55	12.47	8.47	21	-1.6%	-23.9%	0.00	0.02	4.3%	1.5%	0.165	0.115	0.05%
First Takaful Insurance	0.046	0.000	0.00%	0.60	48.92	0.00	5	0.0%	-9.0%	0.00	0.00	1.2%	0.8%	0.062	0.034	0.01%
Wethaq Takaful Insurance	0.026	0.002	10.00%	0.71	15.44	0.00	3	4.8%	-48.1%	0.00	0.04	2.3%	2.3%	0.054	0.024	0.01%
Total Insurance - 8 Companies							617			0.09	0.23					1.44%

Energy	Price			Valuation Multipels			MKT Cap	Price Performance		Trading Indicators		ROE	ROA	52 Week (KD)		MKT Cap
	Company	Close (KD)	Day Δ	Day % Δ	PBV(X)	PE(X)		DY%	Mn KD	MTD(%)	YTD (%)			Value (Mn KD)	(Mn Shrs)	
National Petroleum Services	0.940	-0.048	-4.86%	2.23	13.12	3.54	91	28.8%	14.6%	0.00	0.00	17.8%	14.3%	1.040	0.625	0.21%
Independent Petroleum Group	0.495	0.000	0.00%	0.87	12.50	6.06	89	2.1%	-15.8%	0.00	0.00	7.1%	1.5%	0.600	0.368	0.21%
Burgan for Well Drilling Trading and Maintenance	0.113	-0.004	-3.42%	0.41	9.14	0.00	29	-4.2%	-15.4%	0.03	0.28	4.5%	1.5%	0.161	0.094	0.07%
Energy House Holding	0.021	0.000	-0.48%	0.75	NM	0.00	15	-1.0%	-67.4%	0.01	0.39	-0.9%	-2.2%	0.072	0.019	0.04%
Gulf Petroleum Investment	0.015	0.000	-0.67%	0.21	NM	0.00	7	-2.6%	-39.6%	0.00	0.05	-4.3%	-2.8%	0.026	0.013	0.02%
Senergy Holding	0.045	0.000	0.00%	0.91	NM	0.00	9	-2.0%	-8.2%	0.00	0.00	-1.2%	-0.6%	0.054	0.035	0.02%
Total Energy - 6 Companies							241			0.04	0.72					0.56%

DAILY MARKET COVERAGE REPORT

NIC MENA SECURITIES - RESEARCH AND STUDIES DEP



Real Estate	Price		Valuation Multiples					MKT Cap	Performance		Trading Indicators		ROE	ROA	2 Week (KD)		MKT Cap
Company	Close (KD)	Day Δ	Day % Δ	PBV(X)	PE(X)	DY%	Mn KD	MTD(%)	YTD (%)	Value (Mn KD)	(Mn Shrs)	(%)	(%)	High	Low	%	
Mabane Co.	0.858	0.003	0.35%	1.89	17.76	1.54	1,065	-2.6%	14.7%	0.08	0.10	11.1%	5.5%	0.910	0.720	2.49%	
Salhia Real Estate	0.514	0.002	0.39%	1.64	16.92	2.79	265	-3.0%	2.0%	0.35	0.69	9.9%	4.0%	0.539	0.428	0.62%	
Commercial Real Estate	0.096	-0.001	-0.83%	0.58	19.47	5.17	168	-3.8%	-23.2%	0.36	3.74	3.0%	1.7%	0.132	0.094	0.39%	
National Real Estate	0.130	-0.005	-3.70%	0.77	NM	0.00	242	-13.3%	-29.4%	0.75	5.65	-3.5%	-2.4%	0.212	0.125	0.56%	
Tamdeen Real Estate	0.371	0.000	0.00%	0.68	8.85	2.70	149	-3.4%	9.4%	0.00	0.00	8.2%	3.6%	0.390	0.296	0.35%	
Kuwait Real Estate	0.106	0.001	0.95%	0.78	15.50	2.77	98	-3.6%	-39.0%	0.85	8.01	4.9%	1.9%	0.186	0.097	0.23%	
United Real Estate	0.075	0.000	-0.53%	0.47	109.28	0.00	99	-0.7%	0.0%	0.02	0.26	0.4%	-0.1%	0.121	0.064	0.23%	
First Dubai for Real Estate Development	0.050	0.000	0.20%	0.47	23.10	0.00	37	-10.9%	-52.5%	0.01	0.11	2.1%	1.7%	0.114	0.044	0.09%	
Al Mazaya Holding	0.047	0.000	0.65%	0.47	35.11	0.00	29	-10.7%	-39.0%	0.02	0.41	1.3%	0.7%	0.079	0.043	0.07%	
Ajial Real Estate Entertainment	0.290	0.000	0.00%	0.43	19.09	1.72	56	-1.7%	-4.6%	0.00	0.00	2.2%	1.8%	0.344	0.268	0.13%	
Injazzat Real Estate Development	0.076	0.000	0.00%	0.45	6.07	6.58	26	-6.1%	-24.0%	0.01	0.12	7.5%	3.9%	0.114	0.070	0.06%	
Munshaat Real Estate Projects	0.058	0.000	0.00%	1.75	4.84	0.00	19	-7.0%	-18.3%	0.00	0.00	42.9%	4.5%	0.076	0.051	0.04%	
Aayan Real Estate	0.076	0.001	1.47%	0.53	24.76	0.00	32	0.1%	-14.1%	0.07	0.97	2.2%	2.3%	0.093	0.056	0.07%	
Al Argan International Real Estate	0.093	0.000	0.00%	0.30	11.58	0.00	24	-1.1%	-20.5%	0.00	0.01	2.6%	0.9%	0.144	0.073	0.06%	
Al-Enmaa Real Estate	0.057	-0.002	-4.03%	0.63	NM	0.00	26	-6.2%	-23.4%	0.01	0.12	-5.9%	NM	0.081	0.050	0.06%	
Arkan Al Kuwait Real Estate	0.121	0.000	0.00%	0.86	13.70	4.96	30	-4.7%	-2.4%	0.00	0.00	6.3%	2.0%	0.144	0.113	0.07%	
Kuwait Business Town Real Estate	0.058	-0.001	-1.86%	0.72	11.98	0.00	33	-7.0%	-28.6%	0.00	0.06	5.0%	3.4%	0.092	0.046	0.08%	
Dalqan Real Estate	0.221	0.001	0.45%	1.97	192.17	0.00	13	-6.8%	1.8%	0.03	0.15	1.0%	1.0%	0.249	0.195	0.03%	
Sokouk Holding	0.023	0.000	0.44%	0.53	14.29	0.00	13	-6.9%	-29.4%	0.01	0.44	3.8%	1.7%	0.035	0.020	0.03%	
Tijara and Realestate Investment	0.054	0.001	2.28%	0.48	8.18	5.70	20	-4.9%	-11.9%	0.00	0.00	6.0%	3.3%	0.089	0.044	0.05%	
Al-Arabiya Real Estate	0.027	0.000	1.48%	0.33	NM	0.00	14	-14.4%	-34.6%	0.01	0.54	-22.5%	-7.2%	0.044	0.025	0.03%	
Aqar Real Estate Investments	0.065	0.003	5.01%	0.53	19.12	5.39	15	1.6%	-17.5%	0.00	0.00	2.9%	2.4%	0.084	0.052	0.04%	
Mashaer Holding	0.057	-0.001	-1.72%	0.67	NM	0.00	10	-3.2%	-18.5%	0.01	0.15	-3.6%	-1.2%	0.075	0.049	0.02%	
Dar Al Thuraya Real Estate	0.225	0.000	0.00%	1.93	30.24	0.00	33	0.0%	114.3%	0.00	0.00	6.6%	5.6%	0.225	0.099	0.08%	
Osos Holding Group	0.110	0.000	0.00%	0.97	9.58	9.09	12	4.8%	4.8%	0.00	0.00	10.2%	6.5%	0.147	0.094	0.03%	
Al Massaleh Real Estate	0.029	-0.001	-3.00%	0.48	NM	0.00	7	-4.9%	-44.1%	0.00	0.00	-12.3%	-2.2%	0.052	0.029	0.02%	
Kuwait Remal Real Estate	0.008	0.000	0.00%	1.09	NM	0.00	2	0.0%	-58.6%	0.00	0.00	-114.8%	-12.4%	0.020	0.007	0.01%	
Kuwait Real Estate Holding	0.035	0.000	0.00%	0.65	12.64	0.00	7	0.0%	-33.9%	0.00	0.00	5.1%	1.7%	0.057	0.031	0.02%	
Taameer Real Estate Investment	0.023	0.000	0.00%	0.37	NM	0.00	5	2.7%	-44.1%	0.00	0.00	-13.8%	-12.7%	0.042	0.018	0.01%	
Sanam Real Estate	0.063	0.000	0.00%	0.83	70.79	0.00	8	2.6%	-20.2%	0.00	0.00	1.2%	1.0%	0.100	0.053	0.02%	
Mena Real Estate	0.028	0.000	0.00%	0.32	NM	0.00	4	0.0%	-43.4%	0.00	0.00	-6.8%	-5.4%	0.053	0.028	0.01%	
Al Masaken International Real Estate Developmen	0.027	0.000	-1.11%	0.45	NM	0.00	3	-6.0%	-39.2%	0.00	0.02	-0.5%	-0.2%	0.050	0.026	0.01%	
Real Estate Trade Centers	0.057	0.001	1.97%	0.32	15.32	0.00	8	-5.0%	-18.6%	0.00	0.00	2.1%	1.7%	0.105	0.043	0.02%	
Land United Real Estate	0.068	0.000	0.00%	0.60	NM	0.00	10	0.0%	-27.6%	0.00	0.00	-4.4%	-1.4%	0.098	0.052	0.02%	
Total Real Estate - 34 Companies							2,581			2.60	21.54					6.03%	

DAILY MARKET COVERAGE REPORT

NIC MENA SECURITIES - RESEARCH AND STUDIES DEP



Technology	Price			Valuation Multiples			MKT Cap	Price Performance		Trading Indicators		ROE	ROA	52 Week (KD)		MKT Cap
	Close (KD)	Day Δ	Day % Δ	PBV(X)	PE(X)	DY%	Mn KD	MTD(%)	YTD (%)	Value (Mn KD)	(Mn Shrs)	(%)	(%)	High	Low	%
Automated Systems	0.102	0.007	7.37%	0.91	NM	0.00	10	-3.8%	8.5%	0.00	0.01	-3.2%	-2.8%	0.110	0.074	0.02%
Total Technology - 1 Companies				0.91	NM	0.0%	10			0.00	0.01	-3.21%	-2.82%			0.02%

Telecom	Price			Valuation Multiples			MKT Cap	Price Performance		Trading Indicators		ROE	ROA	52 Week (KD)		MKT Cap
	Close (KD)	Day Δ	Day % Δ	PBV(X)	PE(X)	DY%	Mn KD	MTD(%)	YTD (%)	Value (Mn KD)	(Mn Shrs)	(%)	(%)	High	Low	%
Mobile Telecommunications	0.548	0.002	0.37%	1.97	12.61	6.04	2,371	-6.6%	-7.9%	1.09	1.98	15.7%	4.3%	0.698	0.546	5.54%
Kuwait Telecommunications	0.572	0.000	0.00%	2.47	12.59	5.24	571	-0.7%	33.8%	0.03	0.05	20.3%	11.1%	1.189	0.420	1.33%
National Mobile Telecommunications	1.148	-0.051	-4.25%	1.08	14.90	2.92	575	-1.9%	84.0%	0.05	0.05	7.2%	4.2%	1.280	0.615	1.34%
AAN Digital Services	0.016	0.000	0.00%	2.48	NM	0.00	14	0.0%	-2.4%	0.00	0.00	-99.6%	NM	0.018	0.016	0.03%
Hayat Communications	0.060	0.000	0.00%	0.48	NM	0.00	5	3.4%	-43.4%	0.00	0.00	-1.2%	-0.5%	0.110	0.050	0.01%
Telecom - 5 Companies							3,537			1.18	2.08					8.27%

Utilities	Price			Valuation Multiples			MKT Cap	Price Performance		Trading Indicators		ROE	ROA	52 Week (KD)		MKT Cap
	Close (KD)	Day Δ	Day % Δ	PBV(X)	PE(X)	DY%	Mn KD	MTD(%)	YTD (%)	Value (Mn KD)	(Mn Shrs)	(%)	(%)	High	Low	%
Shamal Az-Zour Al-Oula Power & Water	0.187	0.000	0.00%	1.73	15.38	9.63	206	-5.1%	-18.0%	0.06	0.32	14.8%	2.7%	0.229	0.185	0.48%
Total Utilities - 1 Companies							206			0.06	0.32					0.48%

Total Market 154 Companies				1.94	24.95	4.15	42,792			34.59	124.75					100%
-----------------------------------	--	--	--	-------------	--------------	-------------	---------------	--	--	--------------	---------------	--	--	--	--	-------------

End of Report

The information contained in this document is proprietary to NIC and is for use only by the persons to whom it is issued. This document is confidential and may not be distributed either in part or in whole without the express agreement of NIC. It is intended solely for the use of the individual or entity to whom it is addressed and others authorized to receive it.

Note : ROE and ROA is calculated based on LFY net profit & shareholders' equity and LFY Operating Profits & Total Assets

Sources : National Investments Company Research and Studies Departments, Boursa, Refinitiv.



شركة الاستثمار الوطنية
NATIONAL INVESTMENTS COMPANY

Sharq, Al Mutanabi Street, Khaleejia Tower | P.O. Box 25667, Safat 13117, Kuwait

T.: +965 2226 6666 | Fax: +965 2226 6793 | www.nic.com.kw