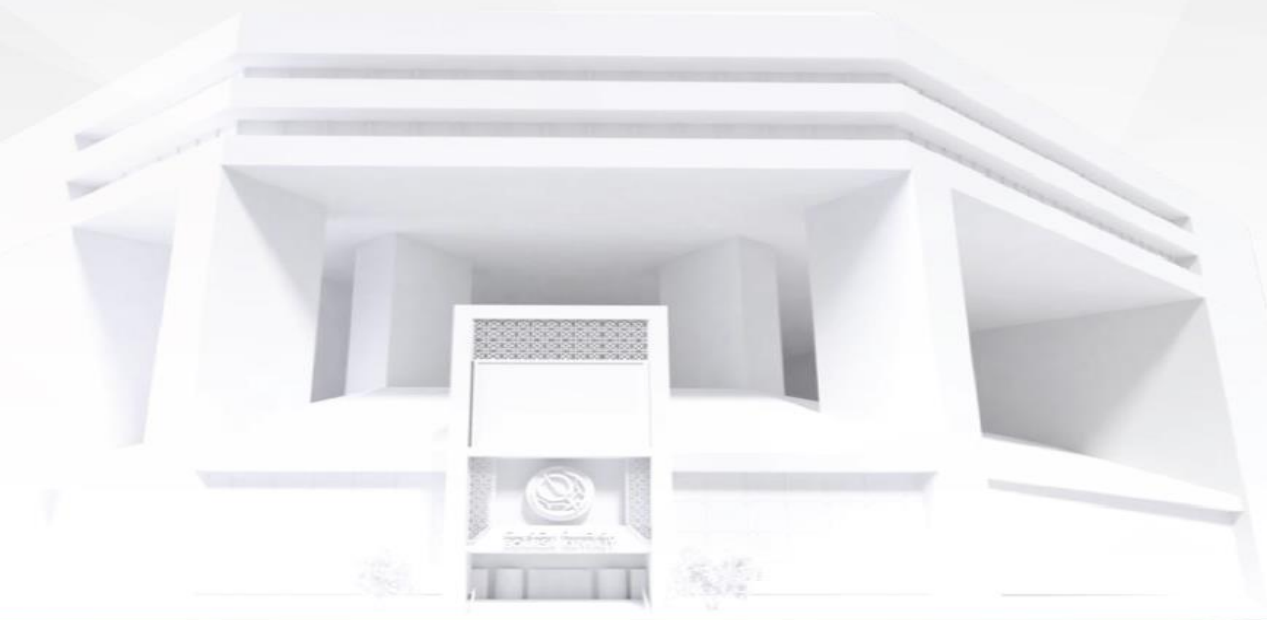




شركة الاستثمار الوطنية
NATIONAL INVESTMENTS COMPANY

Bursa Kuwait – Daily Market Report MENA Securities – Research & Studies Dep.

6 September 2022



www.nic.com.kw

DAILY MARKET COVERAGE REPORT

NIC MENA SECURITIES - RESEARCH AND STUDIES DEP



Kuwait Market Watch

Tuesday, September 6, 2022

Index	Close	DTD Chg Net	DTD (%)	YTD (%)	52W High	52W Low	MKT CAP Bn (KD)	PBV (X)	PE (X)	DY (%)
All Share Index	7,615.23	46.14	0.61%	8.12%	8,472.15	6,759.66	45.17	2.17	26.22	3.58
Premier Index	8,489.17	61.72	0.73%	11.13%	9,437.37	7,343.90	35.47	2.41	25.05	3.95
Main Index	5,799.14	9.51	0.16%	-1.48%	6,600.62	5,488.44	9.70	1.26	30.49	2.22
NIC 50 Index	9,562.36	64.96	0.68%	12.20%	10,553.82	8,195.69	34.77	2.41	25.05	3.95

Index	Value Mn(KD)	Volume (Mn share)
All Share Index	36.37	189.99
Premier Index	25.83	52.47
Main Index	10.54	137.53
NIC 50 Index	30.69	86.03

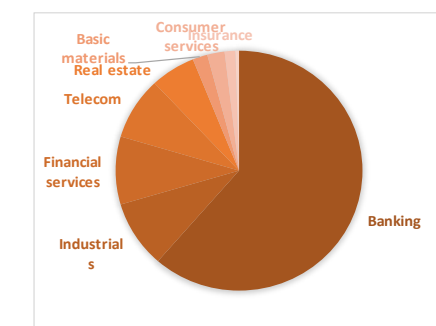
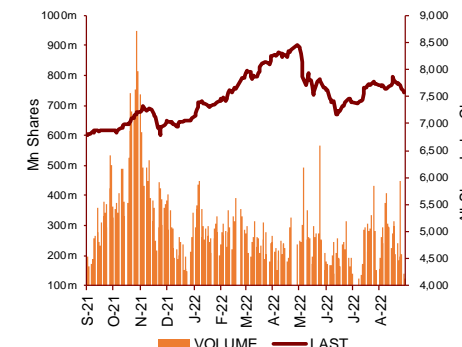
Market Breadth	UP	Down	No Chg
All Share Index	69	35	50
Premier Index	18	3	5
Main Index	51	32	45
NIC 50 Index	35	8	7

Today's Top 5 Gainer %	Close KD	Value KD	DTD (%)
Kuwait Remal Real Estate	0.015	20,635	9.42%
Gulf Investment House	0.365	615,198	8.96%
Energy House Holding	0.027	23,948	7.69%
Ekttitab Holding	0.014	240,350	7.03%
United Projects for Aviation S	0.238	1	6.73%

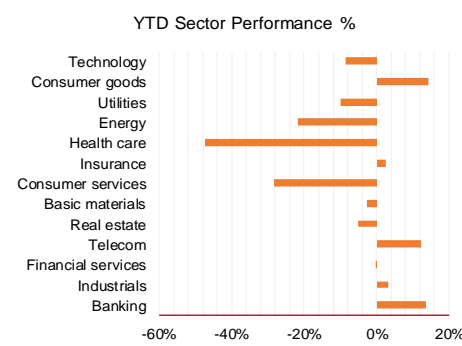
Today's Top 5 Loser %	Close KD	Value KD	DTD (%)
Al-Maidan Clinic for Oral He	0.518	167	-13.38%
Ras Al Khaimah for White C	0.145	10,800	-6.45%
Hayat Communications	0.065	11,733	-5.00%
Kuwait Reinsurance	0.286	29	-4.98%
Arabi Group Holdings	0.278	76,462	-4.14%

Today's Top 5 by Value	Close KD	Trade Val Mn(KD)	DTD (%)
National Bank of Kuwait	1.036	5.73	1.47%
Kuwait Finance House	0.893	4.84	0.22%
Agility Public Warehousing	0.811	3.11	1.12%
Gulf Bank	0.344	2.71	1.18%
Mobile Telecommunications	0.593	2.02	0.00%

Top 5 by Volume	Close KD	Trade Vol Mn(Shrs)	DTD (%)
IFA Hotels and Resorts	0.042	33.15	-2.10%
Ekttitab Holding	0.014	17.48	7.03%
Jiyad Holding	0.036	12.77	5.88%
Kuwait Projects Company t	0.161	8.84	5.23%
Gulf Bank	0.344	7.92	1.18%



Sector	Close	DTD Chg Net	DTD (%)	YTD (%)	52W High	52W Low	MKT CAP Bn (KD)	PBV (X)	PE (X)	DY (%)
Banking	1,841.45	11.450	0.63%	13.5%	1,992.2	1,552.3	27.350	1.71	26.15	1.80
Industrials	1,179.77	7.380	0.63%	3.4%	1,443.6	1,111.8	4.030	1.11	21.90	3.51
Financial services	1,418.12	22.950	1.64%	-0.4%	1,678.3	1,250.7	4.074	1.11	24.85	2.58
Telecom	1,223.41	1.210	0.10%	12.3%	1,514.7	1,055.9	3.743	1.42	14.89	2.73
Real estate	1,259.27	10.580	0.85%	-5.1%	1,438.0	1,155.8	2.630	0.76	39.23	1.26
Basic materials	997.20	-1.210	-0.12%	-2.7%	1,233.3	976.3	0.869	1.33	10.04	5.56
Consumer services	524.99	-1.020	-0.19%	-28.2%	792.7	506.1	1.013	2.59	37.40	1.66
Insurance	1,572.75	-8.310	-0.53%	2.6%	1,675.7	1,399.9	0.627	0.87	48.87	5.17
Health care	420.41	-40.330	-8.75%	-47.3%	821.7	422.2	0.208	15.62	11.46	1.05
Energy	1,118.36	24.940	2.28%	-21.7%	1,592.9	1,075.5	0.226	0.89	22.69	2.28
Utilities	539.47	0.000	0.00%	-10.1%	650.0	510.5	0.226	2.31	15.70	8.78
Consumer goods	1,529.77	8.330	0.55%	14.4%	1,641.0	1,072.8	0.159	1.03	43.03	1.87
Technology	625.65	21.830	3.62%	-8.5%	843.9	582.7	0.009	0.76	NM	-
	7,615.23	46.14	0.61%	8.1%	8,472.2	6,759.7	45.17	2.17	26.22	3.58



DAILY MARKET COVERAGE REPORT

NIC MENA SECURITIES - RESEARCH AND STUDIES DEP

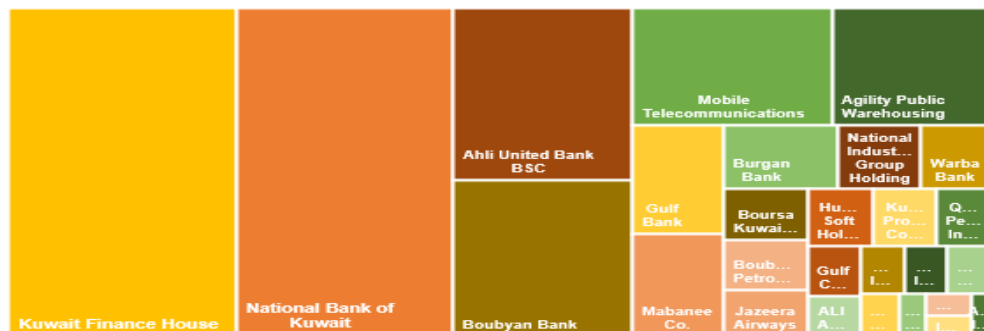


Premier Market

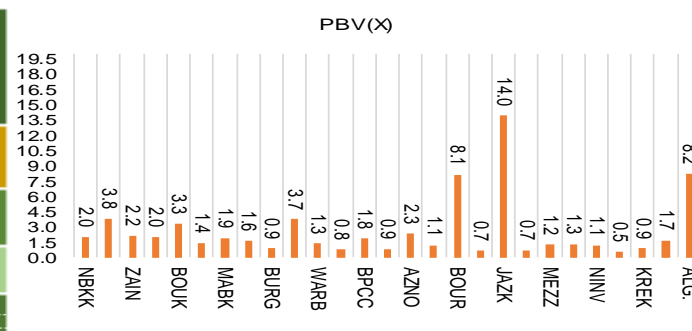
Tuesday, September 6, 2022

Premier Market	Price			Valuation Multiples			MKT Cap	Price Performance		Trading Indicators		ROE	ROA	52 Week (KD)		MKT Cap
	Close (KD)	Day Δ	Day % Δ	PBV(X)	PE(X)	DY%	Mn KD	MTD(%)	YTD (%)	Value (Mn KD)	(Mn Shrs)	(%)	(%)	High	Low	%
National Bank of Kuwait	1.036	0.015	1.47%	2.01	18.73	2.38	7,824	-2%	9%	5.73	5.55	10.9%	1.4%	1.104	0.889	22.21%
Kuwait Finance House	0.893	0.002	0.22%	3.82	30.32	1.22	8,223	-1%	18%	4.84	5.42	12.8%	1.6%	1.039	0.720	23.34%
Mobile Telecommunications	0.593	0.000	0.00%	2.16	14.02	5.56	2,566	-2%	0%	2.02	3.40	15.6%	4.3%	0.698	0.569	7.28%
Ahli United Bank BSC	0.305	0.000	0.00%	2.04	17.93	2.72	3,400	0%	21%	0.00	0.00	11.3%	1.6%	0.336	0.240	9.65%
Boubyan Bank	0.824	0.004	0.49%	3.32	54.32	0.55	3,080	-1%	16%	0.89	1.08	6.7%	0.8%	0.965	0.681	8.74%
Agility Public Warehousing	0.811	0.009	1.12%	1.39	62.29	2.08	2,048	-3%	3%	3.11	3.83	2.7%	2.2%	1.062	0.751	5.81%
Mabaneec Co.	0.831	0.011	1.34%	1.90	17.58	1.61	1,032	0%	11%	0.17	0.20	11.2%	5.4%	0.887	0.715	2.93%
Gulf Bank	0.344	0.004	1.18%	1.61	19.47	1.96	1,089	-2%	29%	2.71	7.92	8.5%	0.8%	0.385	0.222	3.09%
Burgan Bank	0.243	0.002	0.83%	0.89	20.58	1.98	798	-1%	1%	0.42	1.73	4.3%	0.7%	0.307	0.205	2.26%
Human Soft Holding	3.377	0.043	1.29%	3.73	7.80	12.00	411	-3%	4%	0.05	0.02	48.7%	39.9%	3.704	3.006	1.17%
Warba Bank	0.246	0.001	0.41%	1.34	29.15	0.00	492	-2%	-10%	0.43	1.75	4.8%	0.6%	0.298	0.229	1.40%
Qurain Petrochemical Industries	0.318	0.002	0.63%	0.78	12.17	5.70	341	1%	-8%	0.12	0.38	6.4%	5.2%	0.403	0.291	0.97%
Boubyan Petrochemical	0.892	-0.006	-0.67%	1.82	10.09	6.68	465	-3%	5%	0.14	0.15	19.1%	10.1%	1.125	0.825	1.32%
Kuwait Projects Company Holding	0.161	0.008	5.23%	0.85	89.44	3.27	394	0%	13%	1.39	8.84	1.1%	0.1%	0.215	0.132	1.12%
Shamal Az-Zour Al-Oula Power & Water	0.205	0.000	0.00%	2.31	15.70	8.78	226	2%	-10%	0.07	0.34	19.1%	2.9%	0.247	0.194	0.64%
National Industries Group Holding	0.270	0.008	3.05%	1.13	6.21	4.24	582	-4%	12%	1.67	6.25	15.2%	6.5%	0.314	0.198	1.65%
Boursa Kuwait Securities Co	2.340	0.016	0.69%	8.06	25.03	2.80	470	1%	15%	0.08	0.04	33.9%	22.2%	2.870	1.704	1.33%
Kuwait International Bank	0.213	0.000	0.00%	0.67	33.86	1.81	226	-1%	2%	0.01	0.06	1.9%	0.4%	0.259	0.194	0.64%
Jazeera Airways	1.930	0.020	1.05%	13.95	15.60	2.41	425	3%	50%	0.67	0.35	164.8%	12.1%	2.099	0.815	1.21%
Alafco Aviation Lease and Finance	0.193	0.000	0.00%	0.72	NM	0.00	184	-1%	-11%	0.00	0.00	-15.9%	-3.4%	0.256	0.182	0.52%
Mezzan Holding	0.420	-0.001	-0.24%	1.23	43.03	3.73	131	-1%	-27%	0.39	0.93	2.8%	1.3%	0.632	0.405	0.37%
Gulf Cable and Electrical Industries	1.408	-0.017	-1.19%	1.30	13.06	4.21	293	-3%	62%	0.12	0.08	11.0%	NM	1.850	0.808	0.83%
National Investments	0.284	0.006	2.16%	1.13	10.62	16.19	227	-1%	30%	0.18	0.62	10.9%	8.9%	0.475	0.188	0.64%
Alimtia Investment Group	0.092	0.001	0.55%	0.54	NM	9.84	94	-2%	-22%	0.00	0.05	-1.0%	-0.1%	0.142	0.087	0.27%
Kuwait Real Estate	0.122	0.001	0.83%	0.89	14.86	2.41	113	-2%	-30%	0.37	3.07	6.0%	2.5%	0.187	0.114	0.32%
Integrated Holding	0.407	0.002	0.49%	1.68	31.12	2.47	103	-1%	10%	0.10	0.23	5.4%	3.4%	0.478	0.366	0.29%
ALI ALGanim	0.840	0.003	0.36%	8.18	13.17	0.00	233	-2%	0%	0.15	0.18	27.8%	10.9%	0.966	0.797	0.66%
Total		61.72	0.73%	2.41	25.05	3.95	35,236	-1.1%	11.1%	25.83	52.29					101%

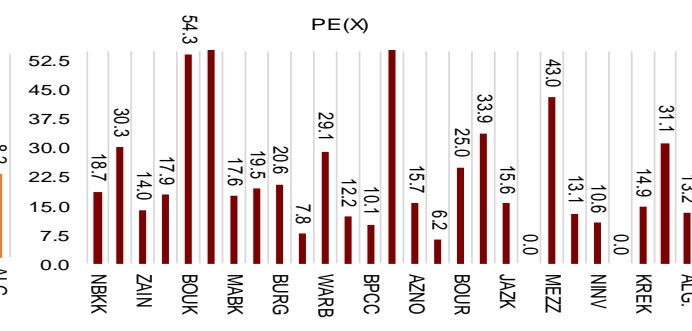
Market Capitalization



Price to Book Value



Price to Earning Value

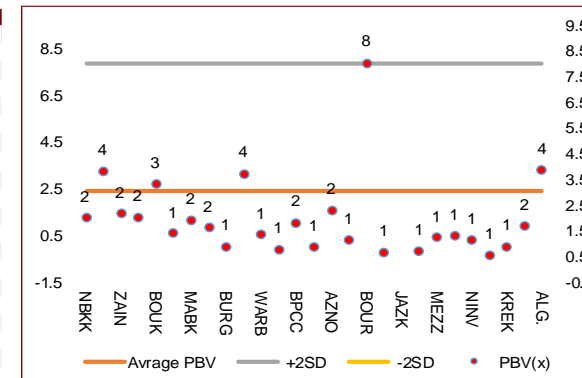


DAILY MARKET COVERAGE REPORT

NIC MENA SECURITIES - RESEARCH AND STUDIES DEP



Premier Market	Price			Valuation Multiples			MKT Cap	Price Performance		ROE	ROA
Company	Close (KD)	Day Δ	Day % Δ	PBV(X)	PE (X)	DY%	Mn KD	MTD (%)	YTD (%)	(%)	(%)
National Bank of Kuwait	1.036	0.015	1.47%	2.01	18.7	2.38	7,824	-1.6%	9.2%	10.9%	1.4%
Kuwait Finance House	0.893	0.002	0.22%	3.82	30.3	1.22	8,223	-0.6%	18.3%	12.8%	1.6%
Mobile Telecommunications	0.593	0.000	0.00%	2.16	14.0	5.56	2,566	-2.0%	-0.3%	15.6%	4.3%
Ahli United Bank BSC	0.305	0.000	0.00%	2.04	17.9	2.72	3,400	0.0%	20.7%	11.3%	1.6%
Boubyan Bank	0.824	0.004	0.49%	3.32	54.3	0.55	3,080	-1.3%	15.7%	6.7%	0.8%
Agility Public Warehousing	0.811	0.009	1.12%	1.39	62.3	2.08	2,048	-3.4%	3.2%	2.7%	2.2%
Mabane Co.	0.831	0.011	1.34%	1.90	17.6	1.61	1,032	-0.1%	10.7%	11.2%	5.4%
Gulf Bank	0.344	0.004	1.18%	1.61	19.5	1.96	1,089	-1.7%	29.5%	8.5%	0.8%
Burgan Bank	0.243	0.002	0.83%	0.89	20.6	1.98	798	-0.8%	0.8%	4.3%	0.7%
Human Soft Holding	3.377	0.043	1.29%	3.73	7.8	12.00	411	-3.5%	3.6%	48.7%	39.9%
Warba Bank	0.246	0.001	0.41%	1.34	29.1	0.00	492	-1.6%	-10.2%	4.8%	0.6%
Qurain Petrochemical Industries	0.318	0.002	0.63%	0.78	12.2	5.70	341	1.3%	-7.8%	6.4%	5.2%
Boubyan Petrochemical	0.892	-0.006	-0.67%	1.82	10.1	6.68	465	-2.7%	4.7%	19.1%	10.1%
Kuwait Projects Company Holding	0.161	0.008	5.23%	0.85	89.4	3.27	394	0.0%	13.4%	1.1%	0.1%
Shamal Az-Zour Al-Oula Power & Water	0.205	0.000	0.00%	2.31	15.7	8.78	226	2.0%	-10.1%	19.1%	2.9%
National Industries Group Holding	0.270	0.008	3.05%	1.13	6.2	4.24	582	-3.9%	11.6%	15.2%	6.5%
Boursa Kuwait Securities Co	2.340	0.016	0.69%	8.06	25.0	2.80	470	1.1%	15.2%	33.9%	22.2%
Kuwait International Bank	0.213	0.000	0.00%	0.67	33.9	1.81	226	-0.9%	1.6%	1.9%	0.4%
Jazeera Airways	1.930	0.020	1.05%	13.95	15.6	2.41	425	3.0%	49.6%	164.8%	12.1%
Alafco Aviation Lease and Finance	0.193	0.000	0.00%	0.72	NM	0.00	184	-0.5%	-11.5%	-15.9%	-3.4%
Mezzan Holding	0.420	-0.001	-0.24%	1.23	43.0	3.73	131	-1.4%	-27.4%	2.8%	1.3%
Gulf Cable and Electrical Industries	1.408	-0.017	-1.19%	1.30	13.1	4.21	293	-2.7%	62.0%	11.0%	9.0%
National Investments	0.284	0.006	2.16%	1.13	10.6	16.19	227	-1.0%	30.1%	10.9%	8.9%
Alimtiq Investment Group	0.092	0.001	0.55%	0.54	NM	9.84	94	-1.6%	-22.0%	-1.0%	-0.1%
Kuwait Real Estate	0.122	0.001	0.83%	0.89	14.9	2.41	113	-2.4%	-29.8%	6.0%	2.5%
Integrated Holding	0.407	0.002	0.49%	1.68	31.1	2.47	103	-1.2%	10.0%	5.4%	3.4%
ALI ALGanim	0.840	0.003	0.36%	3.88	13.2	0.00	233	-1.9%	0.0%	27.8%	10.9%
Total		61.72	0.73%	2.41	25.05	3.95	35,236	-1.1%	11.1%		



Premier Market	Price			Moving Average		RSI	MKT Cap	Price Performance		52 Week (KD)	
Discription	Close (KD)	Day Δ	Day % Δ	50 Day	200 Day	14 Day	Mn KD	MTD (%)	YTD (%)	High	Low
Premier Index	8,489	61.72	0.73%	8,459	8,354	43	35,236	-1.1%	11.2%	9,437	7,344

Top 5 Performrs (Today's Price Change)

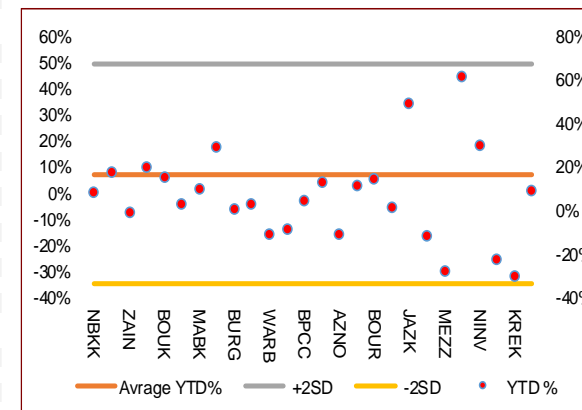
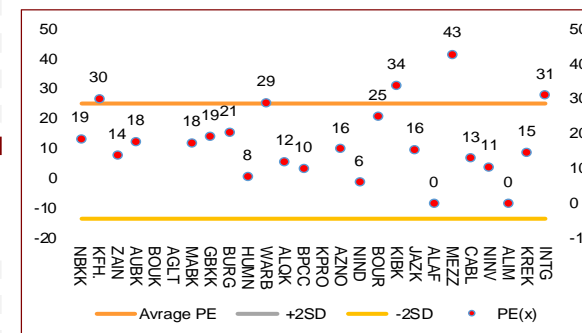
Kuwait Projects Company Holding	0.161	0.008	5.23%	0.152	0.164	61	394	0.0%	13.4%	0.215	0.132
National Industries Group Holding	0.270	0.008	3.05%	0.267	0.259	36	582	-3.9%	11.6%	0.314	0.198
National Investments	0.284	0.006	2.16%	0.298	0.310	35	227	-1.0%	30.1%	0.475	0.188
National Bank of Kuwait	1.036	0.015	1.47%	1.059	1.022	30	7,824	-1.6%	9.2%	1.104	0.889
Mabane Co.	0.831	0.011	1.34%	0.797	0.797	68	1,032	-0.1%	10.7%	0.887	0.715

Middel Performrs (Today's Price Change)

Human Soft Holding	3.377	0.043	1.29%	3.278	3.302	43	411	-3.5%	3.6%	3.704	3.006
Gulf Bank	0.344	0.004	1.18%	0.342	0.307	42	1,089	-1.7%	29.5%	0.385	0.222
Agility Public Warehousing	0.811	0.009	1.12%	0.844	0.869	33	2,048	-3.4%	3.2%	1.062	0.751
Burgan Bank	0.243	0.002	0.83%	0.237	0.252	69	798	-0.8%	0.8%	0.307	0.205
Kuwait Real Estate	0.122	0.001	0.83%	0.132	0.157	33	113	-2.4%	-29.8%	0.187	0.114
Boursa Kuwait Securities Co	2.340	0.016	0.69%	2.358	2.327	41	470	1.1%	15.2%	2.870	1.704
Qurain Petrochemical Industries	0.318	0.002	0.63%	0.313	0.356	52	341	1.3%	-7.8%	0.403	0.291
Alimtiq Investment Group	0.092	0.001	0.55%	0.092	0.115	47	94	-1.6%	-22.0%	0.142	0.087
Boubyan Bank	0.824	0.004	0.49%	0.818	0.792	45	3,080	-1.3%	15.7%	0.965	0.681
Integrated Holding	0.407	0.002	0.49%	0.100	0.100	40	103	-1.2%	10.0%	1.210	0.996
Warba Bank	0.246	0.001	0.41%	0.247	0.268	52	492	-1.6%	-10.2%	0.298	0.229
Kuwait Finance House	0.893	0.002	0.22%	0.873	0.859	60	8,223	-0.6%	18.3%	1.039	0.720
Mobile Telecommunications	0.593	0.000	0.00%	0.607	0.612	20	2,566	-2.0%	-0.3%	0.698	0.569
Ahli United Bank BSC	0.305	0.000	0.00%	0.293	0.278	50	3,400	0.0%	20.7%	0.336	0.240
Kuwait International Bank	0.213	0.000	0.00%	0.214	0.220	54	226	-0.9%	1.6%	0.259	0.194

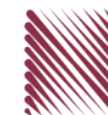
Bottom 5 Performrs (Today's Price Change)

Shamal Az-Zour Al-Oula Power & Water	0.205	0.000	0.00%	0.202	0.218	67	226	2.0%	-10.1%	0.247	0.194
Alafco Aviation Lease and Finance	0.193	0.000	0.00%	0.197	0.212	39	184	-0.5%	-11.5%	0.256	0.182
Mezzan Holding	0.420	-0.001	-0.24%	0.422	0.529	66	131	-1.4%	-27.4%	0.632	0.405
Boubyan Petrochemical	0.892	-0.006	-0.67%	0.921	0.944	27	465	-2.7%	4.7%	1.125	0.825
Gulf Cable and Electrical Industries	1.408	-0.017	-1.19%	1.419	1.281	12	293	-2.7%	62.0%	1.850	0.808



DAILY MARKET COVERAGE REPORT

NIC MENA SECURITIES - RESEARCH AND STUDIES DEP



Banking Sector	Price			Valuation Multiples			MKT Cap	Price Performance		Trading Indicators		ROE	ROA	52 Week (KD)		MKT Cap
Company	Close (KD)	Day Δ	Day % Δ	PBV(X)	PE(X)	DY%	Mn KD	MTD(%)	YTD (%)	Value (Mn KD)	(Mn Shrs)	(%)	(%)	High	Low	%
National Bank of Kuwait	1.036	0.015	1.47%	2.01	18.73	2.38	7,824	-1.6%	9.2%	5.73	5.55	10.9%	1.4%	1.104	0.889	17.32%
Kuwait Finance House	0.893	0.002	0.22%	3.82	30.32	1.22	8,223	-0.6%	18.3%	4.84	5.42	12.8%	1.6%	1.039	0.720	18.20%
Ahli United Bank BSC	0.305	0.000	0.00%	2.04	17.93	2.72	3,400	0.0%	20.7%	0.00	0.00	11.3%	1.6%	0.336	0.240	7.53%
Boubyan Bank	0.824	0.004	0.49%	3.32	54.32	0.55	3,080	-1.3%	15.7%	0.89	1.08	6.7%	0.8%	0.965	0.681	6.82%
Commercial Bank of Kuwait	0.499	0.000	0.00%	1.18	12.44	4.01	988	0.0%	-0.4%	0.00	0.00	9.9%	1.9%	0.549	0.480	2.19%
Gulf Bank	0.344	0.004	1.18%	1.61	19.47	1.96	1,089	-1.7%	29.5%	2.71	7.92	8.5%	0.8%	0.385	0.222	2.41%
Burgan Bank	0.243	0.002	0.83%	0.89	20.58	1.98	798	-0.8%	0.8%	0.42	1.73	4.3%	0.7%	0.307	0.205	1.77%
Ahli United Bank	0.274	0.001	0.37%	0.94	25.25	1.74	617	-1.4%	-6.9%	0.06	0.22	3.7%	0.7%	0.324	0.260	1.37%
Warba Bank	0.246	0.001	0.41%	1.34	29.15	0.00	492	-1.6%	-10.2%	0.43	1.75	4.8%	0.6%	0.298	0.229	1.09%
Al Ahli Bank of Kuwait	0.346	0.000	0.00%	1.03	25.59	1.38	613	-1.4%	42.6%	0.01	0.02	4.0%	0.6%	0.355	0.210	1.36%
Kuwait International Bank	0.213	0.000	0.00%	0.67	33.86	1.81	226	-0.9%	1.6%	0.01	0.06	1.9%	0.4%	0.259	0.194	0.50%
Total Banking Sector - 11 Companies							27,350			15.10	23.74					60.55%

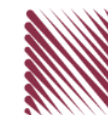
Basic Materials	Price			Valuation Multiples			MKT Cap	Price Performance		Trading Indicators		ROE	ROA	52 Week (KD)		MKT Cap
Company	Close (KD)	Day Δ	Day % Δ	PBV(X)	PE(X)	DY%	Mn KD	MTD(%)	YTD (%)	Value (Mn KD)	(Mn Shrs)	(%)	(%)	High	Low	%
Qurain Petrochemical Industries	0.318	0.002	0.63%	0.78	12.17	5.70	341	1.27%	-7.78%	0.12	0.38	6.4%	5.2%	0.403	0.291	0.76%
Boubyan Petrochemical	0.892	-0.006	-0.67%	1.82	10.09	6.68	465	-2.73%	4.69%	0.14	0.15	19.1%	10.1%	1.125	0.825	1.03%
Al Kout Industrial Projects	0.406	0.000	0.00%	1.45	5.14	9.85	41	0.00%	-18.15%	0.00	0.00	30.5%	20.1%	0.545	0.406	0.09%
Kuwait Foundry	0.300	-0.001	-0.33%	1.25	12.78	0.00	22	-0.33%	-18.70%	0.00	0.00	10.7%	10.3%	0.424	0.289	0.05%
Total Basic Materials - 4 Companies							869			0.26	0.53					1.92%

Consumer Goods	Price			Valuation Multiples			MKT Cap	Price Performance		Trading Indicators		ROE	ROA	52 Week (KD)		MKT Cap
Company	Close (KD)	Day Δ	Day % Δ	PBV(X)	PE(X)	DY%	Mn KD	MTD(%)	YTD (%)	Value (Mn KD)	(Mn Shrs)	(%)	(%)	High	Low	%
Mezzan Holding	0.420	-0.001	-0.24%	1.23	43.03	3.73	131	-1.4%	-27.4%	0.39	0.93	2.8%	1.3%	0.632	0.405	0.29%
Livestock Transport and Trading	0.135	0.000	0.00%	0.83	NM	0.00	28	-4.3%	-25.8%	0.00	0.00	-14.5%	-8.2%	0.196	0.130	0.06%
Total Consumer Goods - 2 Companies							159			0.39	0.93					0.35%

Consumer Services	Price			Valuation Multiples			MKT Cap	Price Performance		Trading Indicators		ROE	ROA	52 Week (KD)		MKT Cap
Company	Close (KD)	Day Δ	Day % Δ	PBV(X)	PE(X)	DY%	Mn KD	MTD(%)	YTD (%)	Value (Mn KD)	(Mn Shrs)	(%)	(%)	High	Low	%
Jazeera Airways	1.930	0.020	1.05%	13.95	15.60	2.41	425	3.0%	49.6%	0.67	0.35	164.8%	12.1%	2.099	0.815	0.94%
Kuwait National Cinema	0.895	0.000	0.00%	1.10	8.72	3.35	83	-1.4%	1.5%	0.00	0.00	13.3%	6.1%	0.933	0.801	0.18%
Oula Fuel Marketing	0.145	0.000	0.00%	0.90	15.64	3.45	59	-3.3%	-7.1%	0.00	0.01	5.6%	2.9%	0.178	0.142	0.13%
Al Soor Fuel Marketing	0.147	0.000	0.00%	0.86	18.75	3.40	59	-1.3%	-5.2%	0.00	0.01	4.8%	3.6%	0.175	0.142	0.13%
Sultan Center Food Products	0.129	0.000	0.00%	0.74	1.03	0.00	36	-2.3%	-38.6%	0.00	0.01	74.2%	12.2%	0.269	0.111	0.08%
Jiyad Holding	0.036	0.002	5.88%	0.41	NM	0.00	7	4.1%	-55.6%	0.46	12.77	-16.2%	-10.9%	0.099	0.015	0.01%
IFA Hotels and Resorts	0.042	-0.001	-2.10%	5.54	280.00	0.00	27	-3.7%	-21.7%	1.41	33.15	2.0%	0.4%	0.073	0.035	0.06%
Kuwait Resorts	0.083	-0.001	-0.96%	0.54	11.62	3.53	16	-2.7%	-13.4%	0.01	0.11	4.8%	4.2%	0.110	0.067	0.04%
Future Kid Entertainment and Real Estate	0.120	0.004	3.45%	1.04	10.50	0.00	13	1.7%	52.5%	0.00	0.02	10.4%	4.7%	0.130	0.071	0.03%
Al Eid Food	0.256	0.001	0.39%	2.02	15.56	2.68	43	0.0%	11.4%	0.01	0.06	13.5%	10.1%	0.304	0.215	0.10%
Kuwait Hotels	0.180	0.000	0.00%	2.26	20.83	2.78	10	-2.2%	157.1%	0.00	0.00	11.1%	7.4%	0.201	0.070	0.02%
Palms Agro Production	0.044	0.000	0.00%	0.44	NM	0.00	2	-4.8%	-36.2%	0.00	0.00	-13.8%	-10.9%	0.090	0.043	0.01%
ALI ALGanim	0.840	0.003	0.36%	3.88	13.17	0.00	233	-1.9%	0.0%	0.15	0.18	27.8%	10.9%	0.966	0.797	0.52%
Total Consumer Services - 13 Companies							1,013			2.72	46.66					2.24%

DAILY MARKET COVERAGE REPORT

NIC MENA SECURITIES - RESEARCH AND STUDIES DEP



Financial Services	Price			Valuation Multiples			MKT Cap	Price Performance		Trading Indicators		ROE	ROA	52 Week (KD)		MKT Cap
	Company	Close (KD)	Day Δ	Day % Δ	PBV(X)	PE(X)		DY%	Mn KD	MTD(%)	YTD (%)			Value (Mn KD)	(Mn Shrs)	
Egypt Kuwait Holding	0.399	-0.001	-0.25%	2.38	6.45	5.34	450	-0.5%	-5.9%	0.01	0.02	37.1%	17.5%	0.465	0.353	1.00%
Kuwait Projects Company Holding	0.161	0.008	5.23%	0.85	89.44	3.27	394	0.0%	13.4%	1.39	8.84	1.1%	0.1%	0.215	0.132	0.87%
National Industries Group Holding	0.270	0.008	3.05%	1.13	6.21	4.24	582	-3.9%	11.6%	1.67	6.25	15.2%	6.5%	0.314	0.198	1.29%
Boursa Kuwait Securities Co	2.340	0.016	0.69%	8.06	25.03	2.80	470	1.1%	15.2%	0.08	0.04	33.9%	22.2%	2.870	1.704	1.04%
GFH Financial Group	0.092	0.000	0.11%	1.04	11.11	3.95	321	-0.6%	-6.1%	0.31	3.31	9.3%	1.2%	0.109	0.063	0.71%
National Investments	0.284	0.006	2.16%	1.13	10.62	16.19	227	-1.0%	30.1%	0.18	0.62	10.9%	8.9%	0.475	0.188	0.50%
Tamdeen Investment	0.430	0.000	0.00%	0.50	11.12	2.33	146	0.0%	13.5%	0.00	0.00	4.9%	3.8%	0.505	0.302	0.32%
Alimtiq Investment Group	0.092	0.001	0.55%	0.54	NM	9.84	94	-1.6%	-22.0%	0.00	0.05	-1.0%	-0.1%	0.142	0.087	0.21%
Commercial Facilities	0.201	-0.003	-1.47%	0.65	7.44	7.35	102	-0.5%	-2.4%	0.00	0.02	8.8%	5.0%	0.228	0.194	0.23%
Aayan Leasing and Investment	0.131	0.001	0.77%	1.00	13.44	0.00	87	-1.5%	-20.8%	0.25	1.94	7.7%	5.8%	0.204	0.118	0.19%
Kuwait Investment	0.149	0.007	4.93%	0.72	8.64	17.61	82	-4.5%	-47.3%	0.80	5.45	8.1%	4.6%	0.317	0.113	0.18%
Noor Financial Investment	0.196	0.000	0.00%	1.21	5.48	2.45	100	0.0%	-23.0%	0.01	0.07	22.7%	16.0%	0.319	0.179	0.22%
Arzan Financial Group for Financing and Investment	0.145	0.003	2.11%	0.97	9.10	1.70	117	-1.4%	-7.4%	0.06	0.39	11.3%	8.2%	0.180	0.120	0.26%
Kuwait Financial Centre	0.142	0.000	0.00%	0.69	10.74	6.71	71	-2.1%	-17.6%	0.01	0.05	6.9%	4.0%	0.197	0.130	0.16%
Gulf Investment House	0.365	0.030	8.96%	3.48	NM	0.00	148	12.7%	21.7%	0.62	1.72	-3.0%	-2.0%	0.380	0.217	0.33%
Arabi Group Holdings	0.278	-0.012	-4.14%	1.66	NM	0.00	46	-3.4%	-3.8%	0.08	0.27	-29.0%	-4.0%	0.499	0.135	0.10%
Kuwait and Middle East Financial Investment	0.139	0.000	0.00%	1.21	16.18	5.04	31	6.9%	-7.3%	0.38	2.76	7.5%	5.2%	0.175	0.118	0.07%
Privatization Holding	0.045	0.002	5.15%	0.37	NM	0.00	27	-0.2%	-18.1%	0.00	0.01	-7.1%	-5.5%	0.070	0.042	0.06%
Asiya Capital Investments	0.051	0.001	1.38%	0.46	2.83	0.00	40	-3.4%	-0.2%	0.13	2.48	17.9%	17.6%	0.071	0.044	0.09%
Umm Al Qaiwain General Investment Co	0.094	0.000	0.00%	0.59	5.15	5.32	34	1.5%	7.8%	0.00	0.00	12.0%	10.0%	0.108	0.075	0.08%
Securities House	0.074	-0.001	-1.59%	0.75	12.67	0.00	31	-5.8%	-24.1%	0.01	0.20	5.8%	5.0%	0.115	0.065	0.07%
Kamco Investment	0.116	0.003	2.65%	0.64	4.59	8.85	40	-1.7%	-11.6%	0.07	0.59	14.5%	6.9%	0.167	0.098	0.09%
First Investment	0.094	0.001	0.54%	0.82	133.57	0.00	42	1.0%	10.9%	0.07	0.71	0.6%	0.7%	0.104	0.072	0.09%
Inovest BSC Public	0.113	0.003	2.73%	0.00	NM	0.00	34	-4.2%	-4.2%	0.06	0.57	2.7%	1.7%	0.189	0.094	0.07%
Coast Investment and Development	0.097	0.000	-0.31%	0.95	13.20	5.17	45	-0.7%	-8.1%	0.00	0.01	7.2%	6.8%	0.127	0.082	0.10%
Al Madar Investment	0.096	-0.003	-3.32%	0.91	56.14	0.00	20	10.3%	-19.3%	0.00	0.01	1.6%	1.7%	0.142	0.083	0.04%
Bayan Investment	0.035	0.000	0.00%	0.31	NM	0.00	13	-68.8%	-71.9%	0.00	0.00	-0.5%	-0.6%	0.060	0.031	0.03%
Al Manar Financing and Leasing	0.060	0.000	0.00%	0.59	19.64	0.00	16	0.5%	-3.3%	0.00	0.00	2.9%	2.3%	0.079	0.055	0.04%
Manazel Holding	0.034	-0.001	-2.84%	0.75	11.71	0.00	15	0.3%	-31.2%	0.02	0.58	6.2%	2.0%	0.060	0.031	0.03%
Kuwait Finance and Investment	0.065	0.000	0.00%	0.48	28.35	0.00	20	-5.5%	-24.9%	0.00	0.00	1.7%	1.6%	0.106	0.064	0.04%
National International Holding	0.139	0.002	1.46%	0.80	10.38	3.54	31	-2.8%	-5.8%	0.00	0.01	7.6%	5.3%	0.174	0.108	0.07%
Osoul Investment	0.084	-0.002	-1.86%	0.77	NM	12.31	11	-3.5%	3.3%	0.01	0.09	-4.4%	-4.0%	0.118	0.078	0.02%
UniCap Investment and Finance	0.057	-0.001	-1.72%	0.63	67.06	0.00	13	-3.2%	-16.8%	0.01	0.14	1.9%	0.2%	0.097	0.051	0.03%
Amar Finance and Leasing	0.064	-0.002	-2.88%	0.59	3.47	0.00	12	-2.9%	-2.3%	0.00	0.01	18.6%	17.3%	0.097	0.057	0.03%
Gulf North Africa Holding	0.135	0.000	0.00%	1.72	59.40	0.00	20	-2.9%	56.8%	0.01	0.08	3.0%	2.4%	0.141	0.057	0.04%
International Financial Advisors	0.096	-0.001	-1.03%	0.62	38.47	0.00	24	-3.1%	-14.9%	0.08	0.79	1.9%	0.7%	0.130	0.084	0.05%
Credit Rating and Collection	0.020	0.000	1.00%	0.70	NM	0.00	3	-7.4%	-43.8%	0.00	0.17	-0.4%	-0.3%	0.069	0.020	0.01%
Ekttitab Holding	0.014	0.001	7.03%	0.44	NM	0.00	4	-6.8%	-36.2%	0.24	17.48	-16.8%	-12.9%	0.024	0.009	0.01%
Kuwait Syrian Holding Co	0.038	0.002	5.00%	0.37	6.10	0.00	7	-1.1%	-12.4%	0.00	0.00	8.7%	6.2%	0.060	0.026	0.01%
Warba Capital Holding	0.094	0.004	4.89%	1.20	NM	0.00	9	4.9%	9.8%	0.02	0.27	-1.8%	-1.7%	0.145	0.070	0.02%
National Consumer Holding	0.135	0.005	3.85%	6.12	NM	0.00	41	-0.7%	12.6%	0.65	4.81	-8.0%	-7.5%	0.198	0.082	0.09%
Al Deera Holding	0.174	0.003	1.75%	1.16	8.77	0.00	16	1.8%	-13.0%	0.00	0.01	12.5%	6.5%	0.200	0.145	0.04%
AL Safat Investment	0.133	0.002	1.53%	1.69	NM	0.00	38	-3.6%	9.9%	0.17	1.28	-1.8%	-1.6%	0.270	0.105	0.08%
Gulf Franchising Holding	0.081	0.000	0.00%	1.59	NM	0.00	3	-3.1%	-15.5%	0.00	0.00	-5.7%	-1.6%	0.148	0.038	0.01%
Total Financial Services - 44 Companies							4,074			7.41	62.09					9.02%

DAILY MARKET COVERAGE REPORT

NIC MENA SECURITIES - RESEARCH AND STUDIES DEP

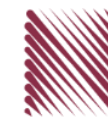


Health Care	Price			Valuation Multiples			MKT Cap	Price Performance		Trading Indicators		ROE	ROA	52 Week (KD)		MKT Cap
	Company	Close (KD)	Day Δ	Day % Δ	PBV(X)	PE(X)		DY%	Mn KD	MTD(%)	YTD (%)			Value (Mn KD)	(Mn Shrs)	
Al-Maidan Clinic for Oral Health Services	0.518	-0.080	-13.38%	2.28	12.66	0.00	129	-2.3%	-58.2%	0.00	0.00	19.4%	12.5%	1.260	0.500	0.29%
Advanced Technology	0.475	0.000	0.00%	1.06	10.26	3.16	71	-4.0%	-8.3%	0.00	0.00	10.7%	2.1%	0.595	0.450	0.16%
Yiaco Medical	0.450	0.000	0.00%	43.51	NM	0.00	8	0.0%	2.7%	0.00	0.00	-161.7%	-4.7%	0.480	0.399	0.02%
Total Health Care - 3 Companies							208			0.00	0.00					0.46%

Industrials	Price			Valuation Multiples			MKT Cap	Price Performance		Trading Indicators		ROE	ROA	52 Week (KD)		MKT Cap
	Company	Close (KD)	Day Δ	Day % Δ	PBV(X)	PE(X)		DY%	Mn KD	MTD(%)	YTD (%)			Value (Mn KD)	(Mn Shrs)	
Agility Public Warehousing	0.811	0.009	1.12%	1.39	62.29	2.08	2,048	-3.4%	3.2%	3.11	3.83	2.7%	2.2%	1.062	0.751	4.54%
Human Soft Holding	3.377	0.043	1.29%	3.73	7.80	12.00	411	-3.5%	3.6%	0.05	0.02	48.7%	39.9%	3.704	3.006	0.91%
Alafco Aviation Lease and Finance	0.193	0.000	0.00%	0.72	NM	0.00	184	-0.5%	-11.5%	0.00	0.00	-15.9%	-3.4%	0.256	0.182	0.41%
Kuwait Cement	0.231	-0.003	-1.28%	0.84	NM	2.14	165	-1.7%	-0.9%	0.14	0.61	-1.1%	-0.7%	0.295	0.219	0.36%
Gulf Cable and Electrical Industries	1.408	-0.017	-1.19%	1.30	13.06	4.21	293	-2.7%	62.0%	0.12	0.08	11.0%	9.0%	1.850	0.808	0.65%
Integrated Holding	0.407	0.002	0.49%	1.68	31.12	2.47	103	-1.2%	10.0%	0.10	0.23	5.4%	3.4%	0.478	0.366	0.23%
Kuwait Portland Cement	0.890	0.000	0.00%	1.25	18.62	7.87	89	0.0%	-9.2%	0.00	0.00	6.8%	5.3%	1.240	0.837	0.20%
Educational Holding Group	3.099	0.000	0.00%	5.26	11.77	17.19	65	3.6%	-22.5%	0.00	0.00	30.0%	17.2%	5.073	2.744	0.14%
United Projects for Aviation Services	0.238	0.015	6.73%	0.87	85.00	0.00	90	-6.7%	-10.1%	0.00	0.00	1.0%	0.6%	0.318	0.209	0.20%
Heavy Engineering Industries and Shipbuilding	0.719	0.007	0.98%	1.93	23.75	2.81	130	-3.9%	42.0%	0.13	0.18	8.2%	3.2%	0.960	0.442	0.29%
National Industries	0.199	0.000	0.00%	0.80	11.60	5.03	70	-9.5%	3.1%	0.00	0.00	6.8%	5.1%	0.260	0.186	0.15%
ACICO Industries	0.127	0.000	0.00%	0.57	NM	0.00	42	0.0%	-7.9%	0.26	2.03	-1.9%	-0.5%	0.208	0.112	0.09%
Kuwait Company for Process Plant Construction a	0.317	0.003	0.96%	1.28	20.54	7.89	38	-0.9%	-33.2%	0.01	0.02	6.1%	3.5%	0.529	0.308	0.08%
Ras Al Khaimah for White Cement and Constructi	0.145	-0.010	-6.45%	1.26	28.07	5.35	73	5.0%	16.7%	0.01	0.07	4.6%	3.7%	0.175	0.076	0.16%
Combined Group Contracting	0.457	0.005	1.11%	1.70	7.00	5.53	78	-0.7%	28.8%	0.00	0.01	26.3%	5.8%	0.500	0.308	0.17%
Kuwait and Gulf Link Transport	0.069	-0.001	-0.72%	0.41	3.70	0.00	19	-5.4%	0.4%	0.00	0.04	11.6%	2.6%	0.106	0.050	0.04%
Shuaiba Industrial	0.171	0.000	0.00%	0.94	14.23	7.02	17	0.0%	-24.0%	0.00	0.00	6.6%	5.4%	0.310	0.163	0.04%
National Cleaning	0.042	0.000	-0.24%	0.33	NM	0.00	10	-2.3%	-26.4%	0.00	0.02	-13.9%	-4.1%	0.080	0.038	0.02%
Fujairah Cement Industries	0.037	0.001	2.82%	0.21	NM	0.00	13	1.4%	-32.4%	0.01	0.29	-12.7%	-6.3%	0.069	0.028	0.03%
Mubarrad Holding	0.088	-0.001	-0.57%	0.68	7.40	5.68	14	-4.3%	-21.7%	0.00	0.05	9.3%	8.2%	0.130	0.076	0.03%
Specialities Group Holding	0.109	0.003	2.83%	0.58	11.85	6.41	18	-2.7%	-12.3%	0.13	1.24	5.0%	3.6%	0.164	0.090	0.04%
Salbookh Trading	0.020	0.000	-1.95%	0.61	NM	0.00	2	-6.5%	-53.7%	0.00	0.01	-51.7%	-28.6%	0.072	0.018	0.00%
Metal and Recycling	0.077	0.000	0.00%	0.99	NM	0.00	7	0.0%	-18.9%	0.00	0.00	-12.0%	-2.0%	0.136	0.068	0.02%
Equipment Holding	0.037	-0.001	-1.33%	0.59	NM	0.00	3	-9.3%	-32.1%	0.00	0.02	-11.1%	-3.2%	0.079	0.031	0.01%
Jassim Transport & Stevedoring	0.332	-0.008	-2.35%	1.12	14.48	4.71	50	-3.2%	-18.4%	0.01	0.12	8.0%	6.3%	0.450	0.307	0.11%
Total Industrials - 24 Companies							4,030			4.10	8.87					8.92%

DAILY MARKET COVERAGE REPORT

NIC MENA SECURITIES - RESEARCH AND STUDIES DEP



Insurance	Price			Valuation Multiples			MKT Cap	Price Performance		Trading Indicators		ROE	ROA	52 Week (KD)		MKT Cap
	Company	Close (KD)	Day Δ	Day % Δ	PBV(X)	PE(X)		DY%	Mn KD	MTD(%)	YTD (%)			Value (Mn KD)	(Mn Shrs)	
Gulf Insurance Group	1.026	0.000	0.00%	1.19	4.40	10.33	291	0.0%	-4.1%	0.00	0.00	28.6%	5.5%	1.200	0.821	0.64%
Al Ahleia Insurance	0.552	0.000	0.00%	0.92	7.61	6.34	120	0.0%	9.3%	0.00	0.00	12.5%	4.4%	0.612	0.453	0.26%
Kuwait Insurance	0.469	0.000	0.00%	0.71	7.27	7.04	87	-0.6%	21.2%	0.00	0.00	10.4%	6.1%	0.485	0.379	0.19%
Kuwait Reinsurance	0.286	-0.015	-4.98%	1.03	10.10	1.52	68	-1.4%	13.4%	0.00	0.00	10.8%	3.4%	0.373	0.217	0.15%
Bahrain Kuwait Insurance	0.191	0.000	0.00%	1.48	13.32	8.44	29	0.0%	0.0%	0.00	0.00	11.0%	2.1%	0.191	0.191	0.06%
Warba Insurance and Reinsurance	0.131	0.001	0.77%	0.56	9.11	7.69	22	-3.0%	-17.6%	0.00	0.01	6.2%	2.1%	0.176	0.121	0.05%
First Takaful Insurance	0.050	0.000	0.00%	0.66	314.38	0.00	5	3.9%	0.6%	0.00	0.00	0.2%	0.1%	0.081	0.034	0.01%
Wethaq Takaful Insurance	0.047	0.001	1.72%	0.42	24.76	0.00	5	24.4%	-6.9%	0.02	0.35	1.7%	1.7%	0.102	0.022	0.01%
Total Insurance - 8 Companies							627			0.02	0.36					1.39%

Energy	Price			Valuation Multiples			MKT Cap	Price Performance		Trading Indicators		ROE	ROA	52 Week (KD)		MKT Cap
	Company	Close (KD)	Day Δ	Day % Δ	PBV(X)	PE(X)		DY%	Mn KD	MTD(%)	YTD (%)			Value (Mn KD)	(Mn Shrs)	
National Petroleum Services	0.768	0.000	0.00%	1.94	13.77	4.56	74	-0.9%	-6.3%	0.00	0.00	14.5%	11.6%	0.880	0.683	0.16%
Independent Petroleum Group	0.445	0.015	3.49%	0.81	14.90	6.98	80	0.7%	-24.3%	0.30	0.68	5.5%	1.0%	0.614	0.368	0.18%
Burgan for Well Drilling Trading and Maintenance	0.139	0.002	1.46%	0.48	10.91	2.13	34	0.0%	-2.8%	0.01	0.08	4.4%	1.4%	0.172	0.112	0.07%
Energy House Holding	0.027	0.002	7.69%	0.96	NM	0.00	20	-44.1%	-57.7%	0.02	0.93	-1.4%	-2.5%	0.086	0.024	0.04%
Gulf Petroleum Investment	0.020	0.001	3.63%	0.28	NM	0.00	9	-4.3%	-18.4%	0.15	7.44	-4.0%	-2.6%	0.031	0.013	0.02%
Senegy Holding	0.043	0.001	1.18%	0.86	51.19	0.00	9	0.0%	-12.2%	0.00	0.01	1.7%	1.4%	0.063	0.037	0.02%
Total Energy - 6 Companies							226			0.48	9.13					0.50%

DAILY MARKET COVERAGE REPORT

NIC MENA SECURITIES - RESEARCH AND STUDIES DEP



Real Estate	Price		Valuation Multiples				MKT Cap	Performance		Trading Indicators		ROE	ROA	2 Week (KD)		MKT Cap
Company	Close (KD)	Day Δ	Day % Δ	PBV(X)	PE(X)	DY%	Mn KD	MTD(%)	YTD (%)	Value (Mn KD)	(Mn Shrs)	(%)	(%)	High	Low	%
Mabane Co.	0.831	0.011	1.34%	1.90	17.58	1.61	1,032	-0.1%	10.7%	0.17	0.20	11.2%	5.4%	0.887	0.715	2.28%
Salhia Real Estate	0.470	0.009	1.95%	1.56	20.09	3.10	242	-0.8%	-6.7%	0.56	1.20	7.9%	3.2%	0.578	0.428	0.54%
Commercial Real Estate	0.108	0.001	0.93%	0.66	11.10	4.67	190	-2.7%	-14.4%	0.32	2.97	6.2%	3.3%	0.140	0.098	0.42%
National Real Estate	0.160	-0.001	-0.62%	0.90	1.45	0.00	297	-3.6%	-12.6%	1.25	7.79	64.5%	38.6%	0.212	0.149	0.66%
Tamdeen Real Estate	0.345	0.000	0.00%	0.67	7.95	2.90	139	3.0%	1.8%	0.00	0.00	9.2%	3.9%	0.375	0.280	0.31%
Kuwait Real Estate	0.122	0.001	0.83%	0.89	14.86	2.41	113	-2.4%	-29.8%	0.37	3.07	6.0%	2.5%	0.187	0.114	0.25%
United Real Estate	0.084	0.001	0.60%	0.53	262.50	0.00	90	-0.6%	10.7%	0.01	0.12	0.2%	-0.1%	0.121	0.064	0.20%
First Dubai for Real Estate Development	0.062	0.000	0.16%	0.60	41.54	0.00	46	-3.3%	-41.2%	0.02	0.40	1.5%	1.2%	0.120	0.055	0.10%
Al Mazaya Holding	0.054	0.000	0.00%	0.55	49.45	0.00	34	-1.1%	-29.3%	0.01	0.19	1.1%	0.6%	0.089	0.051	0.08%
Ajial Real Estate Entertainment	0.282	0.000	0.00%	0.42	17.40	1.77	55	-2.4%	-7.2%	0.00	0.00	2.4%	2.0%	0.345	0.247	0.12%
Injazzat Real Estate Development	0.079	-0.002	-2.35%	0.47	6.73	6.17	27	0.0%	-19.0%	0.01	0.09	7.0%	3.6%	0.114	0.070	0.06%
Munshaat Real Estate Projects	0.065	0.003	4.49%	2.01	12.33	0.00	21	-0.7%	-2.8%	0.30	4.52	17.4%	1.5%	0.081	0.047	0.05%
Aayan Real Estate	0.073	0.000	0.00%	0.51	70.10	0.00	30	-2.8%	-17.6%	0.04	0.61	0.7%	1.4%	0.105	0.066	0.07%
Al Argan International Real Estate	0.094	0.000	0.00%	0.31	34.25	0.00	24	2.7%	-20.1%	0.00	0.03	0.9%	0.3%	0.144	0.076	0.05%
Al-Enmaa Real Estate	0.069	-0.001	-0.72%	0.76	NM	0.00	31	-4.9%	-6.4%	0.34	4.91	-6.3%	NM	0.091	0.056	0.07%
Arkan Al Kuwait Real Estate	0.118	0.000	0.00%	0.86	14.59	5.08	30	-2.5%	-4.8%	0.00	0.00	5.9%	1.9%	0.152	0.117	0.07%
Kuwait Business Town Real Estate	0.064	0.001	1.59%	0.80	17.83	0.00	37	-0.6%	-22.7%	0.01	0.10	3.8%	2.8%	0.102	0.061	0.08%
Dalqan Real Estate	0.227	0.002	0.89%	2.03	210.19	0.00	14	-0.9%	4.6%	0.01	0.05	1.0%	1.0%	0.297	0.195	0.03%
Sokouk Holding	0.027	0.001	2.64%	0.63	NM	0.00	16	-1.4%	-15.6%	0.01	0.43	-2.9%	-1.7%	0.038	0.020	0.03%
Tijara and Realestate Investment	0.060	0.001	0.84%	0.54	9.19	5.04	22	-1.7%	-2.9%	0.05	0.86	6.0%	3.2%	0.089	0.045	0.05%
Al-Arabiya Real Estate	0.037	0.001	2.53%	0.44	NM	0.00	18	2.8%	-12.2%	0.14	3.98	-23.1%	-7.3%	0.052	0.032	0.04%
Aqar Real Estate Investments	0.065	0.000	-0.46%	0.54	20.83	5.09	15	-3.4%	-17.3%	0.00	0.02	2.6%	2.1%	0.098	0.061	0.03%
Mashaer Holding	0.059	0.003	4.99%	0.70	NM	0.00	10	4.3%	-12.7%	0.00	0.03	-6.5%	-3.2%	0.086	0.054	0.02%
Dar Al Thuraya Real Estate	0.170	0.000	0.00%	1.47	25.07	0.00	25	41.7%	61.9%	0.00	0.00	6.0%	5.3%	0.172	0.085	0.06%
Osos Holding Group	0.112	0.000	0.00%	0.98	8.92	8.93	12	-3.4%	6.7%	0.00	0.00	11.2%	7.1%	0.147	0.093	0.03%
Al Massaleh Real Estate	0.042	0.000	-0.48%	0.69	NM	0.00	10	-4.3%	-23.0%	0.00	0.01	-15.4%	-3.2%	0.060	0.038	0.02%
Kuwait Remal Real Estate	0.015	0.001	9.42%	1.94	NM	0.00	5	-6.5%	-24.6%	0.02	1.42	-110.3%	-12.4%	0.025	0.010	0.01%
Kuwait Real Estate Holding	0.038	0.000	-1.03%	0.72	13.91	0.00	7	1.6%	-27.3%	0.00	0.01	5.1%	1.7%	0.059	0.036	0.02%
Taameer Real Estate Investment	0.025	0.000	0.00%	0.39	NM	0.00	5	-5.0%	-40.7%	0.00	0.07	-6.5%	-4.9%	0.054	0.020	0.01%
Sanam Real Estate	0.066	-0.002	-3.07%	0.87	29.64	0.00	8	-3.1%	-15.8%	0.00	0.02	2.9%	2.8%	0.100	0.056	0.02%
Mena Real Estate	0.035	0.002	4.82%	0.31	NM	0.00	5	0.3%	-30.4%	0.02	0.45	-6.8%	-5.4%	0.105	0.030	0.01%
Al Masaken International Real Estate Developmen	0.037	0.001	2.78%	0.60	NM	0.00	4	-3.4%	-15.7%	0.00	0.02	-1.1%	-0.4%	0.069	0.028	0.01%
Real Estate Trade Centers	0.057	-0.001	-1.88%	0.32	24.02	0.00	8	2.4%	-15.7%	0.00	0.06	1.3%	1.1%	0.123	0.043	0.02%
Land United Real Estate	0.068	0.000	0.00%	0.60	NM	0.00	10	0.0%	-27.6%	0.00	0.00	-4.8%	-1.5%	0.144	0.052	0.02%
Total Real Estate - 34 Companies							2,630			3.67	33.65					5.82%

DAILY MARKET COVERAGE REPORT

NIC MENA SECURITIES - RESEARCH AND STUDIES DEP



	Close (KD)	Day Δ	Day % Δ	PBV(X)	PE(X)	DY%	Mn KD	MTD(%)	YTD (%)	Value (Mn KD)	(Mn Shrs)	(%)	(%)	High	Low	%
Automated Systems	0.086	0.003	3.61%	0.76	NM	0.00	9	3.0%	-8.5%	0.00	0.00	-3.4%	-3.0%	0.116	0.080	0.02%
Total Technology - 1 Companies				0.76	NM	0.0%	9			0.00	0.00	-3.40%	-2.96%			0.02%

Telecom	Price			Valuation Multiples			MKT Cap	Price Performance		Trading Indicators		ROE	ROA	52 Week (KD)		MKT Cap
Company	Close (KD)	Day Δ	Day % Δ	PBV(X)	PE(X)	DY%	Mn KD	MTD(%)	YTD (%)	Value (Mn KD)	(Mn Shrs)	(%)	(%)	High	Low	%
Mobile Telecommunications	0.593	0.000	0.00%	2.16	14.02	5.56	2,566	-2.0%	-0.3%	2.02	3.40	15.6%	4.3%	0.698	0.569	5.68%
Kuwait Telecommunications	0.628	0.004	0.64%	2.82	14.44	4.81	627	-2.5%	46.9%	0.07	0.11	20.1%	10.9%	1.189	0.418	1.39%
National Mobile Telecommunications	1.070	0.000	0.00%	1.02	16.21	3.27	536	-2.4%	71.5%	0.05	0.05	6.2%	3.6%	1.280	0.615	1.19%
AAN Digital Services	0.016	0.000	0.00%	0.60	NM	0.00	14	0.0%	-2.4%	0.00	0.00	NM	NM	0.020	0.014	0.03%
Hayat Communications	0.065	-0.003	-5.00%	0.52	NM	0.00	6	-6.8%	-39.0%	0.01	0.18	-0.7%	-0.3%	0.124	0.062	0.01%
Telecom - 5 Companies							3,749			2.15	3.74					8.30%

Utilities	Price			Valuation Multiples			MKT Cap	Price Performance		Trading Indicators		ROE	ROA	52 Week (KD)		MKT Cap
Company	Close (KD)	Day Δ	Day % Δ	PBV(X)	PE(X)	DY%	Mn KD	MTD(%)	YTD (%)	Value (Mn KD)	(Mn Shrs)	(%)	(%)	High	Low	%
Shamal Az-Zour Al-Oula Power & Water	0.205	0.000	0.00%	2.31	15.70	8.78	226	2.0%	-10.1%	0.07	0.34	19.1%	2.9%	0.247	0.194	0.50%
Total Utilities - 1 Companies							226			0.07	0.34					0.50%

Total Market 157 Companies				2.17	26.22	3.58	45,170			36.37	189.99					100%
-----------------------------------	--	--	--	-------------	--------------	-------------	---------------	--	--	--------------	---------------	--	--	--	--	-------------

End of Report

The information contained in this document is proprietary to NIC and is for use only by the persons to whom it is issued. This document is confidential and may not be distributed either in part or in whole without the express agreement of NIC. It is intended solely for the use of the individual or entity to whom it is addressed and others authorized to receive it.

Note : ROE and ROA is calculated based on LFY net profit & shareholders' equity and LFY Operating Profits & Total Assets

Sources : National Investments Company Research and Studies Departments, Boursa, Refinitiv.



شركة الاستثمار الوطنية
NATIONAL INVESTMENTS COMPANY

Sharq, Al Mutanabi Street, Khaleejia Tower | P.O. Box 25667, Safat 13117, Kuwait

T.: +965 2226 6666 | Fax: +965 2226 6793 | www.nic.com.kw