



شركة الاستثمار الوطنية
NATIONAL INVESTMENTS COMPANY

Bursa Kuwait – Daily Market Report MENA Securities – Research & Studies Dep.

01 June 2022



DAILY MARKET COVERAGE REPORT

NIC MENA SECURITIES - RESEARCH AND STUDIES DEP



Kuwait Market Watch

Wednesday, June 1, 2022

Index	Close	DTD Chg Net	DTD (%)	YTD (%)	52W High	52W Low	MKT CAP Bn (KD)	PBV (X)	PE (X)	DY (%)
All Share Index	7,809.15	-14.43	-0.18%	10.88%	8,472.15	6,202.15	46.08	2.72	27.90	3.18
Premier Index	8,655.85	-20.11	-0.23%	13.31%	9,437.37	6,725.19	35.91	2.63	28.24	3.51
Main Index	6,070.28	-0.96	-0.02%	3.13%	6,600.62	5,177.74	10.17	3.04	26.72	2.02
NIC 50 Index	9,705.80	-16.04	-0.16%	13.88%	10,553.82	6,360.95	35.21	2.63	28.24	3.51

Index	Value Mn(KD)	Volume (Mn share)
All Share Index	59.28	250.03
Premier Index	39.33	91.83
Main Index	19.95	158.20
NIC 50 Index	72.81	199.67

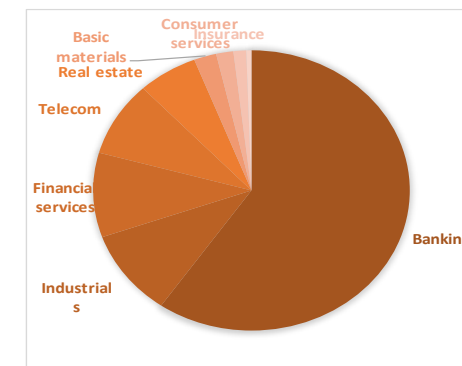
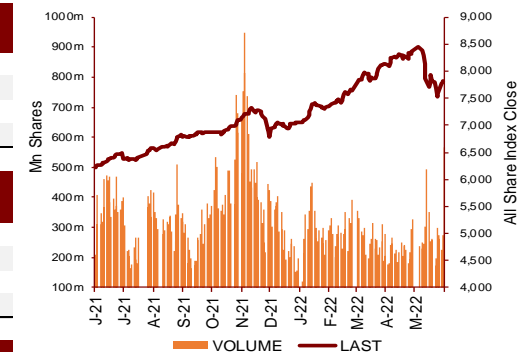
Market Breadth	UP	Down	No Chg
All Share Index	60	55	42
Premier Index	12	13	1
Main Index	48	42	41
NIC 50 Index	29	19	2

Today's Top 5 Gainer %	Close KD	Value KD	DTD (%)
Energy House Holding	0.050	46,077	16.71%
Mashaer Holding	0.071	5,776	9.91%
Al Eid Food	0.288	401,374	6.67%
Dar Al Thuraya Real Estate	0.166	0	6.41%
UniCap Investment and Finance	0.062	14,309	5.59%

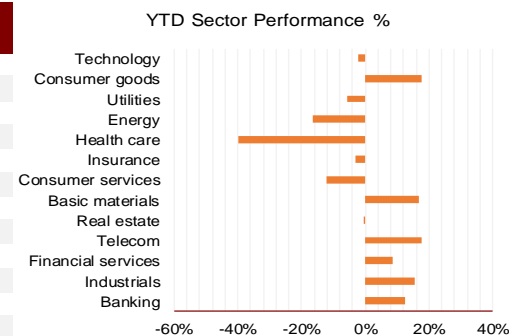
Today's Top 5 Loser %	Close KD	Value KD	DTD (%)
National Cleaning	0.044	1,940	-5.17%
Kuwait Hotels	0.133	130	-5.00%
Al Ahleia Insurance	0.514	4,637	-4.99%
National Mobile Telecomm	0.941	17,535	-4.85%
Kamco Investment	0.118	397,860	-4.84%

Today's Top 5 by Value	Close KD	Trade Val Mn(KD)	DTD (%)
Gulf Bank	0.321	8.73	2.88%
Kuwait Finance House	0.890	6.92	-1.00%
National Bank of Kuwait	1.031	4.09	-0.67%
First Investment	0.100	3.34	0.51%
Ahli United Bank BSC	0.276	2.87	0.73%

Top 5 by Volume	Close KD	Trade Vol Mn(Shrs)	DTD (%)
First Investment	0.100	33.21	0.51%
Gulf Bank	0.321	27.32	2.88%
GFH Financial Group	0.097	18.79	0.10%
Aayan Leasing and Investn	0.176	11.27	5.39%
AL Safat Investment	0.171	11.12	-0.58%



Sector	Close	DTD Chg Net	DTD (%)	YTD (%)	52W High	52W Low	MKT CAP Bn (KD)	PBV (X)	PE (X)	DY (%)
Banking	1,822.77	-3.480	-0.19%	12.3%	1,992.2	1,386.1	27.083	1.83	28.24	1.83
Industrials	1,320.41	-1.860	-0.14%	15.7%	1,443.6	1,115.9	4.510	1.18	21.50	3.05
Financial services	1,547.73	8.210	0.53%	8.7%	1,678.3	1,132.2	4.425	1.09	20.15	2.20
Telecom	1,283.77	-10.500	-0.81%	17.8%	1,514.7	1,055.9	3.928	1.57	16.54	2.58
Real estate	1,320.45	0.350	0.03%	-0.4%	1,438.0	1,155.5	2.780	7.67	42.33	1.13
Basic materials	1,195.52	-10.710	-0.89%	16.7%	1,233.3	985.7	1.042	1.60	13.74	4.16
Consumer services	643.15	-8.840	-1.36%	-12.0%	807.4	638.0	0.798	2.55	41.84	1.74
Insurance	1,487.66	-15.420	-1.03%	-3.0%	1,675.7	1,219.0	0.593	0.81	17.88	5.30
Health care	480.10	0.000	0.00%	-39.8%	821.7	468.9	0.238	12.14	15.59	1.47
Energy	1,192.32	25.620	2.20%	-16.5%	1,592.9	1,163.6	0.240	1.02	37.66	2.25
Utilities	565.79	0.000	0.00%	-5.7%	650.0	552.6	0.237	2.70	16.58	8.37
Consumer goods	1,572.02	-12.740	-0.80%	17.6%	1,641.0	945.8	0.191	1.16	25.02	1.50
Technology	669.30	0.000	0.00%	-2.1%	887.6	594.4	0.009	0.80	NM	-
	7,809.15	-14.43	-0.18%	10.9%	8,472.2	6,202.2	46.07	2.72	27.90	3.18



DAILY MARKET COVERAGE REPORT

NIC MENA SECURITIES - RESEARCH AND STUDIES DEP

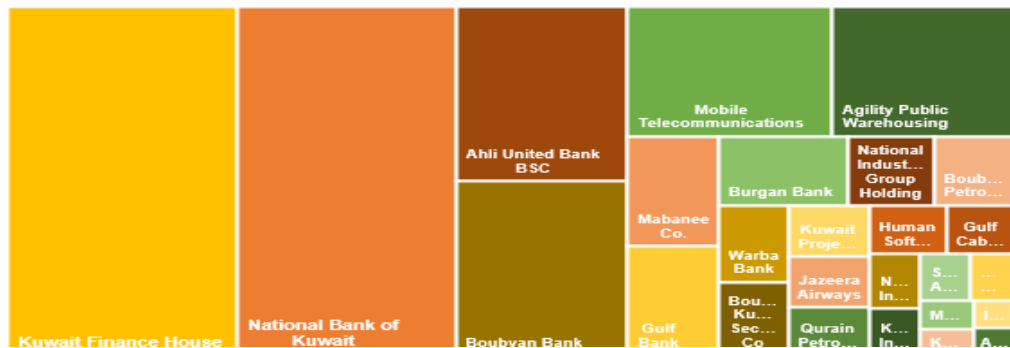


Premier Market

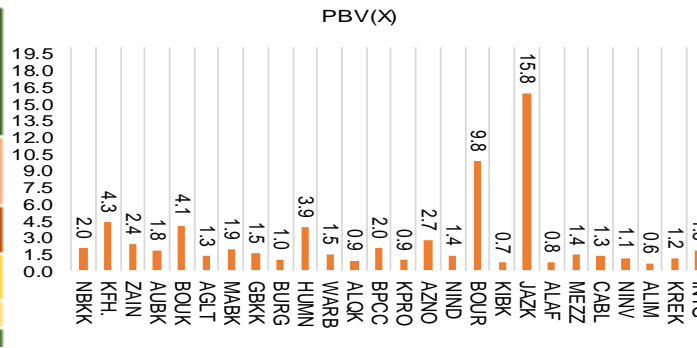
Wednesday, June 1, 2022

Premier Market	Price			Valuation Multiples			MKT Cap	Price Performance		Trading Indicators		ROE	ROA	52 Week (KD)		MKT Cap
	Close (KD)	Day Δ	Day % Δ	PBV(X)	PE(X)	DY%	Mn KD	MTD(%)	YTD (%)	Value (Mn KD)	(Mn Shrs)	(%)	(%)	High	Low	%
National Bank of Kuwait	1.031	-0.007	-0.67%	2.03	21.21	2.75	7,786	-1%	9%	4.09	3.98	9.5%	1.3%	1.104	0.790	21.68%
Kuwait Finance House	0.890	-0.009	-1.00%	4.34	31.93	1.21	8,201	-1%	18%	6.92	7.75	13.3%	1.5%	1.039	0.676	22.83%
Mobile Telecommunications	0.627	-0.003	-0.48%	2.40	15.59	5.24	2,713	0%	5%	2.68	4.28	15.5%	4.0%	0.698	0.569	7.55%
Ahli United Bank BSC	0.276	0.002	0.73%	1.84	17.62	3.03	3,077	1%	9%	2.87	10.50	11.4%	1.6%	0.336	0.198	8.57%
Boubyan Bank	0.820	0.008	0.99%	4.06	65.55	0.56	3,065	1%	15%	0.77	0.94	6.7%	0.7%	0.965	0.604	8.54%
Agility Public Warehousing	1.142	-0.006	-0.52%	1.33	66.90	1.74	2,404	0%	21%	2.38	2.08	2.4%	2.1%	1.275	0.901	6.69%
Mabane Co.	0.826	-0.012	-1.43%	1.94	18.05	1.58	1,026	-1%	10%	0.41	0.49	11.2%	5.4%	0.887	0.666	2.86%
Gulf Bank	0.321	0.009	2.88%	1.53	22.83	2.14	1,015	3%	21%	8.73	27.32	7.0%	0.7%	0.385	0.215	2.83%
Burgan Bank	0.278	0.002	0.72%	1.02	19.65	1.73	913	1%	16%	0.56	2.03	5.0%	0.8%	0.307	0.203	2.54%
Human Soft Holding	3.135	0.031	1.00%	3.88	6.54	12.89	381	1%	-3%	0.15	0.05	49.6%	31.9%	3.840	3.006	1.06%
Warba Bank	0.272	0.004	1.49%	1.48	31.78	0.00	544	1%	-1%	1.61	5.96	4.7%	0.6%	0.298	0.224	1.51%
Qurain Petrochemical Industries	0.371	-0.001	-0.27%	0.89	17.02	4.30	398	0%	7%	0.05	0.13	5.3%	4.4%	0.407	0.333	1.11%
Boubyan Petrochemical	1.085	-0.015	-1.36%	2.04	14.58	5.00	566	-1%	27%	0.55	0.51	15.2%	7.5%	1.125	0.820	1.58%
Kuwait Projects Company Holding	0.175	-0.002	-1.13%	0.92	31.82	2.82	426	-1%	23%	0.51	2.88	2.7%	0.2%	0.215	0.132	1.19%
Shamal Az-Zour Al-Oula Power & Water	0.215	0.000	0.00%	2.70	16.58	8.37	237	0%	-6%	0.10	0.48	18.1%	2.8%	0.247	0.210	0.66%
National Industries Group Holding	0.309	0.006	1.98%	1.36	4.42	0.00	616	2%	19%	1.86	6.05	26.8%	10.2%	0.339	0.198	1.72%
Boursa Kuwait Securities Co	2.587	0.027	1.05%	9.84	29.06	2.54	519	1%	28%	0.09	0.04	32.8%	19.3%	2.870	1.195	1.45%
Kuwait International Bank	0.227	0.002	0.89%	0.69	33.38	1.71	242	1%	8%	0.44	1.97	2.1%	0.4%	0.259	0.194	0.67%
Jazeera Airways	1.936	-0.039	-1.97%	15.84	25.82	1.62	426	-2%	50%	0.73	0.37	92.8%	8.0%	2.030	0.618	1.19%
Alafco Aviation Lease and Finance	0.215	0.001	0.47%	0.75	NM	0.00	205	0%	-1%	0.91	4.25	-9.0%	-2.0%	0.256	0.184	0.57%
Mezzan Holding	0.525	-0.010	-1.87%	1.42	25.02	2.99	160	-2%	-11%	0.15	0.28	5.6%	2.6%	0.660	0.519	0.45%
Gulf Cable and Electrical Industries	1.620	-0.007	-0.43%	1.30	16.12	3.69	338	0%	86%	0.87	0.54	9.4%	NM	1.850	0.728	0.94%
National Investments	0.356	-0.004	-1.11%	1.13	7.87	12.50	284	-1%	63%	0.69	1.95	16.6%	14.2%	0.475	0.166	0.79%
Alimtiyaz Investment Group	0.106	0.002	1.92%	0.62	104.95	8.65	109	2%	-10%	0.17	1.65	0.6%	0.8%	0.142	0.100	0.30%
Kuwait Real Estate	0.159	0.003	1.92%	1.15	23.25	1.87	148	2%	-9%	0.76	4.81	5.1%	2.1%	0.187	0.118	0.41%
Integrated Holding	0.449	-0.006	-1.32%	1.80	38.47	2.20	114	-1%	21%	0.25	0.56	4.8%	3.0%	0.478	0.358	0.32%
Total		-20.11	-0.23%	2.63	28.24	3.51	35,914	0.0%	13.3%	39.33	91.83					100%

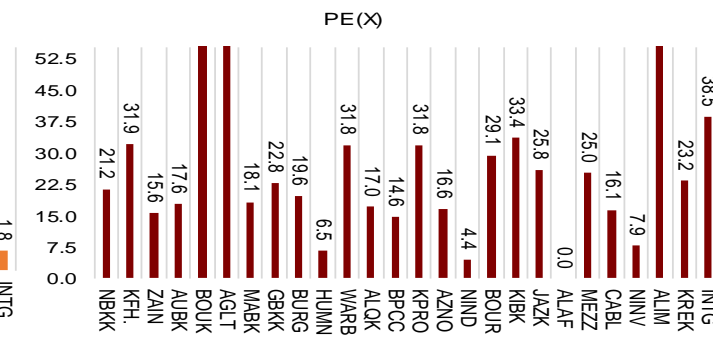
Market Capitalization



Price to Book Value

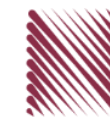


Price to Earning Value



DAILY MARKET COVERAGE REPORT

NIC MENA SECURITIES - RESEARCH AND STUDIES DEP



Premier Market Company	Price			Valuation Multiples			MKT Cap Mn KD	Price Performance		ROE (%)	ROA (%)
	Close (KD)	Day Δ	Day % Δ	PBV(X)	PE(X)	DY%		MTD(%)	YTD (%)		
National Bank of Kuwait	1.031	-0.007	-0.67%	2.03	21.2	2.75	7,786	-0.7%	8.6%	9.5%	1.3%
Kuwait Finance House	0.890	-0.009	-1.00%	4.34	31.9	1.21	8,201	-1.0%	17.7%	13.3%	1.5%
Mobile Telecommunications	0.627	-0.003	-0.48%	2.40	15.6	5.24	2,713	-0.5%	5.4%	15.5%	4.0%
Ahli United Bank BSC	0.276	0.002	0.73%	1.84	17.6	3.03	3,077	0.7%	9.2%	11.4%	1.6%
Boubyan Bank	0.820	0.008	0.99%	4.06	65.5	0.56	3,065	1.0%	15.1%	6.7%	0.7%
Agility Public Warehousing	1.142	-0.006	-0.52%	1.33	66.9	1.74	2,404	-0.3%	21.1%	2.4%	2.1%
Mabane Co.	0.826	-0.012	-1.43%	1.94	18.1	1.58	1,026	-1.4%	10.4%	11.2%	5.4%
Gulf Bank	0.321	0.009	2.88%	1.53	22.8	2.14	1,015	2.9%	20.8%	7.0%	0.7%
Burgan Bank	0.278	0.002	0.72%	1.02	19.6	1.73	913	0.7%	16.3%	5.0%	0.8%
Human Soft Holding	3.135	0.031	1.00%	3.88	6.5	12.89	381	1.0%	-2.8%	49.6%	31.9%
Warba Bank	0.272	0.004	1.49%	1.48	31.8	0.00	544	1.5%	-0.7%	4.7%	0.6%
Qurain Petrochemical Industries	0.371	-0.001	-0.27%	0.89	17.0	4.30	398	-0.3%	6.9%	5.3%	4.4%
Boubyan Petrochemical	1.085	-0.015	-1.36%	2.04	14.6	5.00	566	-1.4%	27.3%	15.2%	7.5%
Kuwait Projects Company Holding	0.175	-0.002	-1.13%	0.92	31.8	2.82	426	-1.1%	23.2%	2.7%	0.2%
Shamal Az-Zour Al-Oula Power & Water	0.215	0.000	0.00%	2.70	16.6	8.37	237	0.0%	-5.7%	18.1%	2.8%
National Industries Group Holding	0.309	0.006	1.98%	1.36	4.4	0.00	616	2.0%	18.7%	26.8%	10.2%
Boursa Kuwait Securities Co	2.587	0.027	1.05%	9.84	29.1	2.54	519	1.1%	28.1%	32.8%	19.3%
Kuwait International Bank	0.227	0.002	0.89%	0.69	33.4	1.71	242	0.9%	8.3%	2.1%	0.4%
Jazeera Airways	1.936	-0.039	-1.97%	15.84	25.8	1.62	426	-2.0%	50.1%	92.8%	8.0%
Alafco Aviation Lease and Finance	0.215	0.001	0.47%	0.75	NM	0.00	205	0.5%	-1.4%	-9.0%	-2.0%
Mezzan Holding	0.525	-0.010	-1.87%	1.42	25.0	2.99	160	-1.9%	-10.9%	5.6%	2.6%
Gulf Cable and Electrical Industries	1.620	-0.007	-0.43%	1.30	16.1	3.69	338	-0.4%	86.0%	9.4%	7.6%
National Investments	0.356	-0.004	-1.11%	1.13	7.9	12.50	284	-1.1%	62.6%	16.6%	14.2%
Alimtiq Investment Group	0.106	0.002	1.92%	0.62	105.0	8.65	109	1.9%	-10.2%	0.6%	0.8%
Kuwait Real Estate	0.159	0.003	1.92%	1.15	23.2	1.87	148	1.9%	-8.5%	5.1%	2.1%
Integrated Holding	0.449	-0.006	-1.32%	1.80	38.5	2.20	114	-1.3%	21.4%	4.8%	3.0%
Total		-20.11	-0.23%	2.63	28.24	3.51	35,914	0.0%	13.3%	0.00%	0.00%

Premier Market Description	Price			Moving Average		RSI 14 Day	MKT Cap Mn KD	Price Performance		52 Week (KD)	
	Close (KD)	Day Δ	Day % Δ	50 Day	200 Day			MTD(%)	YTD (%)	High	Low
Premier Index	8,656	-20.11	-0.23%	8,956	8,059	39	35,914	0.0%	13.5%	9,437	6,725

Top 5 Performrs (Today's Price Change)

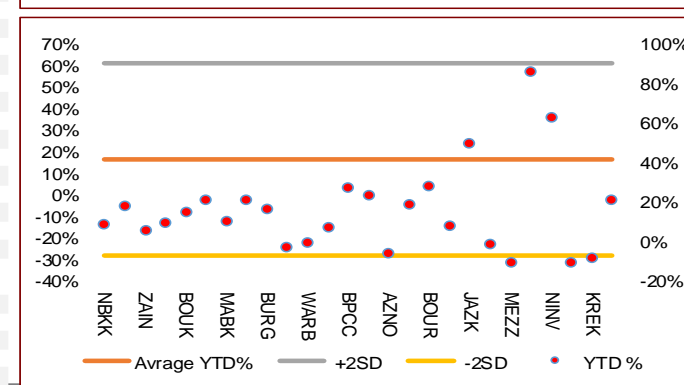
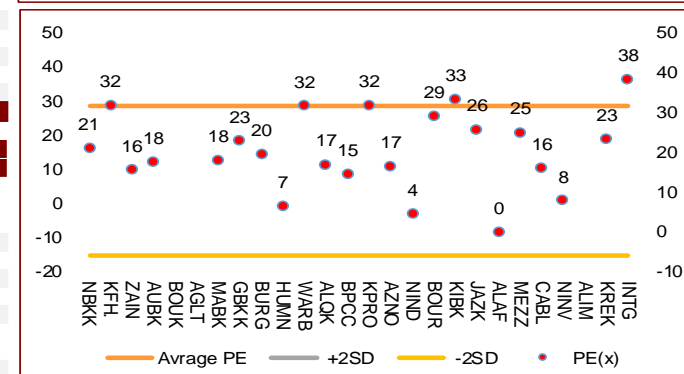
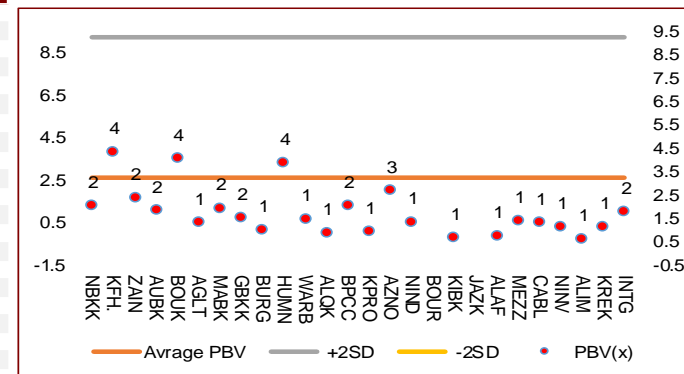
Gulf Bank	0.321	0.009	2.88%	0.331	0.273	33	1,015	2.9%	20.8%	0.385	0.215
National Industries Group Holding	0.309	0.006	1.98%	0.293	0.259	55	616	2.0%	18.7%	0.339	0.198
Alimtiq Investment Group	0.106	0.002	1.92%	0.122	0.126	31	109	1.9%	-10.2%	0.142	0.100
Kuwait Real Estate	0.159	0.003	1.92%	0.160	0.162	43	148	1.9%	-8.5%	0.187	0.118
Warba Bank	0.272	0.004	1.49%	0.276	0.267	44	544	1.5%	-0.7%	0.298	0.224

Middle Performrs (Today's Price Change)

Boursa Kuwait Securities Co	2.587	0.027	1.05%	2.608	2.160	56	519	1.1%	28.1%	2.870	1.195
Human Soft Holding	3.135	0.031	1.00%	3.336	3.339	37	381	1.0%	-2.8%	3.840	3.006
Boubyan Bank	0.820	0.008	0.99%	0.861	0.757	33	3,065	1.0%	15.1%	0.965	0.604
Kuwait International Bank	0.227	0.002	0.89%	0.239	0.221	33	242	0.9%	8.3%	0.259	0.194
Ahli United Bank BSC	0.276	0.002	0.73%	0.297	0.268	34	3,077	0.7%	9.2%	0.336	0.198
Burgan Bank	0.278	0.002	0.72%	0.284	0.243	37	913	0.7%	16.3%	0.307	0.203
Alafco Aviation Lease and Finance	0.215	0.001	0.47%	0.212	0.224	52	205	0.5%	-1.4%	0.256	0.184
Shamal Az-Zour Al-Oula Power & Water	0.215	0.000	0.00%	0.221	0.229	40	237	0.0%	-5.7%	0.247	0.210
Qurain Petrochemical Industries	0.371	-0.001	-0.27%	0.378	0.374	38	398	-0.3%	6.9%	0.407	0.333
Gulf Cable and Electrical Industries	1.620	-0.007	-0.43%	0.100	0.100	44	338	-0.4%	86.0%	1.210	0.996
Mobile Telecommunications	0.627	-0.003	-0.48%	0.633	0.609	49	2,713	-0.5%	5.4%	0.698	0.569
Agility Public Warehousing	1.142	-0.006	-0.52%	1.152	1.030	46	2,404	-0.3%	21.1%	1.275	0.901
National Bank of Kuwait	1.031	-0.007	-0.67%	1.051	0.975	45	7,786	-0.7%	8.6%	1.104	0.790
Kuwait Finance House	0.890	-0.009	-1.00%	0.948	0.821	35	8,201	-1.0%	17.7%	1.039	0.676
National Investments	0.356	-0.004	-1.11%	0.403	0.280	22	284	-1.1%	62.6%	0.475	0.166

Bottom 5 Performrs (Today's Price Change)

Kuwait Projects Company Holding	0.175	-0.002	-1.13%	0.188	0.164	41	426	-1.1%	23.2%	0.215	0.132
Integrated Holding	0.449	-0.006	-1.32%	0.423	0.389	55	114	-1.3%	21.4%	0.478	0.358
Boubyan Petrochemical	1.085	-0.015	-1.36%	1.017	0.930	57	566	-1.4%	27.3%	1.125	0.820
Mabane Co.	0.826	-0.012	-1.43%	0.836	0.777	57	1,026	-1.4%	10.4%	0.887	0.666
Mezzan Holding	0.525	-0.010	-1.87%	0.569	0.597	21	160	-1.9%	-10.9%	0.660	0.519



DAILY MARKET COVERAGE REPORT

NIC MENA SECURITIES - RESEARCH AND STUDIES DEP



Banking Sector		Price			Valuation Multiples			MKT Cap	Price Performance		Trading Indicators		ROE	ROA	52 Week (KD)		MKT Cap
Company	Close (KD)	Day Δ	Day % Δ	PBV(X)	PE(X)	DY%	Mn KD	MTD(%)	YTD (%)	Value (Mn KD)	(Mn Shrs)	(%)	(%)	High	Low	%	
National Bank of Kuwait	1.031	-0.007	-0.67%	2.03	21.21	2.75	7,786	-0.7%	8.6%	4.09	3.98	9.5%	1.3%	1.104	0.790	16.90%	
Kuwait Finance House	0.890	-0.009	-1.00%	4.34	31.93	1.21	8,201	-1.0%	17.7%	6.92	7.75	13.3%	1.5%	1.039	0.676	17.80%	
Ahli United Bank BSC	0.276	0.002	0.73%	1.84	17.62	3.03	3,077	0.7%	9.2%	2.87	10.50	11.4%	1.6%	0.336	0.198	6.68%	
Boubyan Bank	0.820	0.008	0.99%	4.06	65.55	0.56	3,065	1.0%	15.1%	0.77	0.94	6.7%	0.7%	0.965	0.604	6.65%	
Commercial Bank of Kuwait	0.504	0.000	0.00%	1.13	12.98	3.97	998	0.0%	0.6%	0.43	0.85	9.7%	1.8%	0.550	0.485	2.17%	
Gulf Bank	0.321	0.009	2.88%	1.53	22.83	2.14	1,015	2.9%	20.8%	8.73	27.32	7.0%	0.7%	0.385	0.215	2.20%	
Burgan Bank	0.278	0.002	0.72%	1.02	19.65	1.73	913	0.7%	16.3%	0.56	2.03	5.0%	0.8%	0.307	0.203	1.98%	
Ahli United Bank	0.293	-0.002	-0.68%	1.00	26.76	1.61	663	-0.7%	-0.4%	0.11	0.36	4.3%	0.7%	0.324	0.267	1.44%	
Warba Bank	0.272	0.004	1.49%	1.48	31.78	0.00	544	1.5%	-0.7%	1.61	5.96	4.7%	0.6%	0.298	0.224	1.18%	
Al Ahli Bank of Kuwait	0.326	-0.005	-1.51%	0.99	26.96	1.44	577	-1.5%	34.8%	0.49	1.51	3.6%	0.5%	0.334	0.194	1.25%	
Kuwait International Bank	0.227	0.002	0.89%	0.69	33.38	1.71	242	0.9%	8.3%	0.44	1.97	2.1%	0.4%	0.259	0.194	0.52%	
Total Banking Sector - 11 Companies							27,083			27.03	63.16					58.77%	

Basic Materials		Price			Valuation Multiples			MKT Cap	Price Performance		Trading Indicators		ROE	ROA	52 Week (KD)		MKT Cap
Company	Close (KD)	Day Δ	Day % Δ	PBV(X)	PE(X)	DY%	Mn KD	MTD(%)	YTD (%)	Value (Mn KD)	(Mn Shrs)	(%)	(%)	High	Low	%	
Qurain Petrochemical Industries	0.371	-0.001	-0.27%	0.89	17.02	4.30	398	-0.27%	6.92%	0.05	0.13	5.3%	4.4%	0.407	0.333	0.86%	
Boubyan Petrochemical	1.085	-0.015	-1.36%	2.04	14.58	5.00	566	-1.36%	27.35%	0.55	0.51	15.2%	7.5%	1.125	0.820	1.23%	
Al Kout Industrial Projects	0.545	0.000	0.00%	1.93	9.61	7.34	55	0.00%	9.88%	0.00	0.00	21.5%	14.4%	0.675	0.449	0.12%	
Kuwait Foundry	0.318	-0.006	-1.85%	1.54	NM	0.00	23	-1.85%	-13.82%	0.02	0.08	-0.5%	-0.4%	0.430	0.285	0.05%	
Total Basic Materials - 4 Companies							1,042			0.63	0.71					2.26%	

Consumer Goods		Price			Valuation Multiples			MKT Cap	Price Performance		Trading Indicators		ROE	ROA	52 Week (KD)		MKT Cap
Company	Close (KD)	Day Δ	Day % Δ	PBV(X)	PE(X)	DY%	Mn KD	MTD(%)	YTD (%)	Value (Mn KD)	(Mn Shrs)	(%)	(%)	High	Low	%	
Mezzan Holding	0.525	-0.010	-1.87%	1.42	25.02	2.99	160	-1.9%	-10.9%	0.15	0.28	5.6%	2.6%	0.660	0.519	0.35%	
Livestock Transport and Trading	0.150	0.002	1.35%	0.89	NM	0.00	31	1.4%	-17.6%	0.00	0.00	-13.2%	-7.6%	0.196	0.147	0.07%	
Total Consumer Goods - 2 Companies							191			0.15	0.28					0.42%	

Consumer Services		Price			Valuation Multiples			MKT Cap	Price Performance		Trading Indicators		ROE	ROA	52 Week (KD)		MKT Cap
Company	Close (KD)	Day Δ	Day % Δ	PBV(X)	PE(X)	DY%	Mn KD	MTD(%)	YTD (%)	Value (Mn KD)	(Mn Shrs)	(%)	(%)	High	Low	%	
Jazeera Airways	1.936	-0.039	-1.97%	15.84	25.82	1.62	426	-2.0%	50.1%	0.73	0.37	92.8%	8.0%	2.030	0.618	0.92%	
Kuwait National Cinema	0.850	0.000	0.00%	1.07	11.78	3.53	79	0.0%	-3.6%	0.00	0.00	9.6%	4.4%	0.933	0.750	0.17%	
Oula Fuel Marketing	0.154	-0.002	-1.28%	0.94	16.33	3.21	62	-1.3%	-1.3%	0.01	0.07	5.8%	2.9%	0.178	0.134	0.14%	
Al Soor Fuel Marketing	0.158	0.000	0.00%	0.88	20.05	3.16	64	0.0%	1.9%	0.01	0.09	4.6%	3.6%	0.175	0.135	0.14%	
Sultan Center Food Products	0.150	0.001	0.67%	0.64	1.14	0.00	42	0.7%	-28.6%	0.09	0.58	67.1%	12.1%	0.269	0.131	0.09%	
Jiyad Holding	0.035	0.000	0.00%	0.33	NM	0.00	12	0.0%	-57.2%	0.00	0.00	-6.7%	-3.7%	0.099	0.028	0.03%	
IFA Hotels and Resorts	0.044	0.000	0.00%	5.14	NM	0.00	28	0.0%	-17.9%	0.00	0.12	-12.9%	-0.1%	0.073	0.039	0.06%	
Kuwait Resorts	0.082	0.001	0.99%	0.53	14.24	3.62	16	1.0%	-15.0%	0.01	0.17	4.0%	3.6%	0.110	0.073	0.04%	
Future Kid Entertainment and Real Estate	0.083	-0.001	-1.31%	0.74	251.52	0.00	9	-1.3%	5.5%	0.03	0.32	0.3%	-0.2%	0.090	0.064	0.02%	
Al Eid Food	0.288	0.018	6.67%	2.25	20.03	2.16	49	6.6%	24.8%	0.40	1.47	11.7%	8.9%	0.304	0.142	0.11%	
Kuwait Hotels	0.133	-0.007	-5.00%	1.62	15.61	3.57	8	-5.0%	90.0%	0.00	0.00	10.9%	7.3%	0.180	0.062	0.02%	
Palms Agro Production	0.065	0.000	0.00%	0.66	NM	0.00	3	0.0%	-4.7%	0.00	0.00	-16.6%	-12.8%	0.090	0.050	0.01%	
Total Consumer Services - 12 Companies							798			1.28	3.18					1.73%	

DAILY MARKET COVERAGE REPORT

NIC MENA SECURITIES - RESEARCH AND STUDIES DEP



Financial Services Company	Price			Valuation Multiples			MKT Cap	Price Performance		Trading Indicators		ROE	ROA	52 Week (KD)		MKT Cap
	Close (KD)	Day Δ	Day % Δ	PBV(X)	PE(X)	DY%	Mn KD	MTD(%)	YTD (%)	Value (Mn KD)	(Mn Shrs)	(%)	(%)	High	Low	%
Egypt Kuwait Holding	0.426	0.001	0.24%	2.66	7.40	5.03	480	0.2%	0.5%	0.03	0.08	35.5%	15.0%	0.465	0.294	1.04%
Kuwait Projects Company Holding	0.175	-0.002	-1.13%	0.92	31.82	2.82	426	-1.1%	23.2%	0.51	2.88	2.7%	0.2%	0.215	0.132	0.93%
National Industries Group Holding	0.309	0.006	1.98%	1.36	4.42	0.00	616	2.0%	18.7%	1.86	6.05	26.8%	10.2%	0.339	0.198	1.34%
Boursa Kuwait Securities Co	2.587	0.027	1.05%	9.84	29.06	2.54	519	1.1%	28.1%	0.09	0.04	32.8%	19.3%	2.870	1.195	1.13%
GFH Financial Group	0.097	0.000	0.10%	1.05	11.84	3.76	340	0.1%	-1.8%	1.82	18.79	8.9%	1.2%	0.109	0.060	0.74%
National Investments	0.356	-0.004	-1.11%	1.13	7.87	12.50	284	-1.1%	62.6%	0.69	1.95	16.6%	14.2%	0.475	0.166	0.62%
Tamdeen Investment	0.434	0.000	0.00%	0.47	29.89	2.30	148	0.0%	14.5%	0.00	0.00	1.9%	1.3%	0.505	0.236	0.32%
Alimtiq Investment Group	0.106	0.002	1.92%	0.62	104.95	8.65	109	1.9%	-10.2%	0.17	1.65	0.6%	0.8%	0.142	0.100	0.24%
Commercial Facilities	0.206	-0.004	-1.90%	0.67	7.51	7.14	105	-1.9%	0.0%	0.04	0.18	8.9%	5.1%	0.228	0.189	0.23%
Aayan Leasing and Investment	0.176	0.009	5.39%	1.30	19.38	0.00	117	5.4%	6.3%	1.94	11.27	6.6%	5.1%	0.204	0.144	0.25%
Kuwait Investment	0.172	0.000	0.00%	0.76	3.35	14.53	94	0.0%	-38.8%	1.64	9.52	24.1%	11.2%	0.317	0.157	0.20%
Noor Financial Investment	0.234	-0.001	-0.43%	1.35	6.05	2.04	119	-0.4%	-8.0%	0.05	0.20	23.9%	16.8%	0.319	0.175	0.26%
Arzan Financial Group for Financing and Investmei	0.168	0.003	1.82%	0.98	13.94	1.52	131	1.8%	4.3%	0.29	1.72	8.0%	5.8%	0.186	0.130	0.28%
Kuwait Financial Centre	0.161	0.000	0.00%	0.75	4.40	5.92	81	0.0%	-6.6%	0.04	0.23	18.5%	9.7%	0.197	0.116	0.18%
Gulf Investment House	0.296	0.006	2.07%	2.83	18.23	0.00	120	2.1%	-1.3%	0.01	0.05	17.0%	14.0%	0.380	0.217	0.26%
Arabi Group Holdings	0.288	-0.002	-0.69%	1.66	NM	0.00	48	-0.7%	-1.0%	0.02	0.07	-32.6%	-4.8%	0.499	0.102	0.10%
Kuwait and Middle East Financial Investment	0.168	-0.001	-0.59%	1.39	12.90	4.14	37	-0.6%	12.0%	0.00	0.00	11.4%	7.4%	0.198	0.119	0.08%
Privatization Holding	0.049	-0.001	-1.01%	0.39	NM	0.00	30	-1.0%	-10.6%	0.01	0.12	-2.1%	-2.1%	0.070	0.048	0.06%
Asiya Capital Investments	0.060	0.001	0.84%	0.53	2.92	0.00	47	0.8%	15.4%	0.33	5.48	20.1%	19.7%	0.071	0.040	0.10%
Umm Al Qaiwain General Investment Co	0.096	0.000	0.00%	0.70	5.72	5.21	35	0.0%	10.2%	0.00	0.00	12.5%	10.7%	0.108	0.063	0.08%
Securities House	0.085	0.002	2.05%	0.83	19.72	0.00	38	2.0%	-15.8%	0.09	1.07	4.3%	3.6%	0.117	0.073	0.08%
Kamco Investment	0.118	-0.006	-4.84%	0.63	3.27	8.06	40	-4.8%	-8.5%	0.40	3.31	21.1%	9.7%	0.167	0.094	0.09%
First Investment	0.100	0.001	0.51%	0.82	NM	0.00	44	0.5%	18.2%	3.34	33.21	-2.3%	-1.2%	0.104	0.072	0.10%
Inovent BSC Public	0.155	0.008	5.44%	0.00	NM	0.00	46	5.4%	31.4%	1.03	6.69	1.5%	0.9%	0.189	0.094	0.10%
Coast Investment and Development	0.111	-0.001	-0.89%	1.02	9.18	4.46	52	-0.9%	5.7%	0.09	0.82	11.5%	11.1%	0.127	0.094	0.11%
Al Madar Finance and Investment	0.104	0.004	4.00%	0.98	59.77	0.00	22	4.0%	-12.6%	0.00	0.02	1.7%	1.7%	0.156	0.091	0.05%
Bayan Investment	0.037	0.000	-0.27%	0.31	NM	0.00	13	-0.3%	-24.7%	0.01	0.40	-0.5%	-0.4%	0.060	0.034	0.03%
Al Manar Financing and Leasing	0.072	0.002	2.57%	0.71	19.62	0.00	22	2.6%	7.2%	0.00	0.01	3.7%	3.1%	0.085	0.058	0.05%
Manazel Holding	0.042	0.001	2.98%	0.88	13.34	0.00	18	3.0%	-18.9%	0.11	2.78	6.5%	2.2%	0.060	0.036	0.04%
Kuwait Finance and Investment	0.079	-0.001	-0.75%	0.59	31.76	0.00	25	-0.7%	-8.5%	0.03	0.33	1.9%	1.9%	0.106	0.070	0.05%
National International Holding	0.145	0.003	2.11%	0.78	11.24	3.52	31	2.1%	-4.6%	0.02	0.13	6.9%	4.9%	0.179	0.088	0.07%
Osoul Investment	0.090	-0.003	-3.12%	0.65	NM	11.39	11	-3.1%	10.2%	0.00	0.01	-1.5%	-1.4%	0.118	0.078	0.02%
UniCap Investment and Finance	0.062	0.003	5.59%	0.68	4.20	0.00	14	5.6%	-9.1%	0.01	0.24	18.9%	5.4%	0.097	0.057	0.03%
Amar Finance and Leasing	0.069	0.000	0.00%	0.64	3.74	0.00	13	0.0%	5.3%	0.00	0.00	18.6%	17.3%	0.097	0.052	0.03%
Gulf North Africa Holding	0.119	-0.002	-1.65%	1.72	59.40	0.00	20	-1.7%	38.2%	0.00	0.04	3.0%	2.4%	0.141	0.057	0.04%
International Financial Advisors	0.113	0.001	0.89%	0.76	33.93	0.00	28	0.9%	0.0%	0.92	8.10	2.7%	1.1%	0.145	0.098	0.06%
Credit Rating and Collection	0.027	0.000	0.00%	0.89	48.18	0.00	4	0.0%	-34.1%	0.00	0.00	1.9%	1.8%	0.069	0.020	0.01%
Ekttitab Holding	0.012	0.000	0.00%	0.39	NM	0.00	4	0.0%	-41.8%	0.00	0.00	-16.4%	-14.1%	0.024	0.012	0.01%
Kuwait Syrian Holding Co	0.039	0.000	0.00%	0.40	6.23	0.00	7	0.0%	-9.1%	0.00	0.00	7.8%	5.3%	0.060	0.025	0.01%
Warba Capital Holding	0.095	0.000	0.00%	1.20	NM	0.00	10	0.0%	10.5%	0.00	0.00	-0.7%	-0.6%	0.145	0.058	0.02%
National Consumer Holding	0.125	-0.002	-1.57%	1.71	NM	0.00	11	-1.6%	4.2%	0.02	0.16	-9.4%	-8.8%	0.198	0.047	0.02%
Al Deera Holding	0.190	0.000	0.00%	1.05	12.43	0.00	17	0.0%	-5.0%	0.00	0.00	8.8%	4.9%	0.210	0.145	0.04%
AL Safat Investment	0.171	-0.001	-0.58%	1.98	31.09	0.00	46	-0.6%	33.6%	1.93	11.12	6.3%	3.2%	0.284	0.110	0.10%
Gulf Franchising Holding	0.084	0.003	3.70%	1.64	NM	0.00	3	3.7%	-12.4%	0.00	0.00	-9.2%	-2.5%	0.148	0.032	0.01%
Total Financial Services - 44 Companies							4,427			17.54	128.71					9.61%

DAILY MARKET COVERAGE REPORT

NIC MENA SECURITIES - RESEARCH AND STUDIES DEP



Health Care	Price			Valuation Multiples			MKT Cap	Price Performance		Trading Indicators		ROE	ROA	52 Week (KD)		MKT Cap
	Company	Close (KD)	Day Δ	Day % Δ	PBV(X)	PE(X)		DY%	Mn KD	MTD(%)	YTD (%)			Value (Mn KD)	(Mn Shrs)	
Al-Maidan Clinic for Oral Health Services	0.592	0.000	0.00%	2.87	17.37	1.69	148	0.0%	-52.3%	0.00	0.00	17.7%	11.3%	1.260	0.558	0.32%
Advanced Technology	0.549	0.000	0.00%	1.25	13.80	2.73	82	0.0%	6.0%	0.00	0.00	9.3%	1.8%	0.600	0.401	0.18%
Yiaco Medical	0.450	0.000	0.00%	32.31	NM	0.00	8	0.0%	2.7%	0.00	0.00	-158.7%	-5.3%	0.523	0.399	0.02%
Total Health Care - 3 Companies							238			0.00	0.00					0.52%

Industrials	Price			Valuation Multiples			MKT Cap	Price Performance		Trading Indicators		ROE	ROA	52 Week (KD)		MKT Cap
	Company	Close (KD)	Day Δ	Day % Δ	PBV(X)	PE(X)		DY%	Mn KD	MTD(%)	YTD (%)			Value (Mn KD)	(Mn Shrs)	
Agility Public Warehousing	1.142	-0.006	-0.52%	1.33	66.90	1.74	2,404	-0.3%	21.1%	2.38	2.08	2.4%	2.1%	1.275	0.901	5.22%
Human Soft Holding	3.135	0.031	1.00%	3.88	6.54	12.89	381	1.0%	-2.8%	0.15	0.05	49.6%	31.9%	3.840	3.006	0.83%
Alafco Aviation Lease and Finance	0.215	0.001	0.47%	0.75	NM	0.00	205	0.5%	-1.4%	0.91	4.25	-9.0%	-2.0%	0.256	0.184	0.44%
Kuwait Cement	0.240	0.000	0.00%	0.82	NM	0.00	171	0.0%	3.9%	0.28	1.15	-1.1%	-0.7%	0.295	0.220	0.37%
Gulf Cable and Electrical Industries	1.620	-0.007	-0.43%	1.30	16.12	3.69	338	-0.4%	86.0%	0.87	0.54	9.4%	7.6%	1.850	0.728	0.73%
Integrated Holding	0.449	-0.006	-1.32%	1.80	38.47	2.20	114	-1.3%	21.4%	0.25	0.56	4.8%	3.0%	0.478	0.358	0.25%
Kuwait Portland Cement	0.991	0.004	0.41%	1.20	12.61	7.09	99	0.4%	1.1%	0.07	0.07	10.5%	8.2%	1.240	0.860	0.22%
Educational Holding Group	3.000	0.060	2.04%	6.09	12.22	18.12	63	-0.7%	-27.0%	0.00	0.00	26.0%	15.2%	5.073	2.831	0.14%
United Projects for Aviation Services	0.280	0.000	0.00%	1.03	54.69	0.00	106	0.0%	12.9%	0.00	0.00	1.4%	0.9%	0.319	0.209	0.23%
Heavy Engineering Industries and Shipbuilding	0.740	0.008	1.09%	1.90	22.93	2.73	133	1.1%	45.4%	0.29	0.39	8.4%	3.3%	0.960	0.442	0.29%
National Industries	0.225	0.000	0.00%	0.87	12.34	4.44	79	0.0%	16.6%	0.02	0.10	7.2%	4.7%	0.260	0.154	0.17%
ACICO Industries	0.145	0.002	1.40%	0.64	NM	0.00	48	1.4%	4.3%	0.19	1.34	-0.8%	-0.3%	0.208	0.110	0.10%
Kuwait Company for Process Plant Construction a	0.429	-0.003	-0.69%	1.54	25.57	6.02	48	-0.7%	-13.9%	0.04	0.09	5.8%	3.4%	0.570	0.395	0.11%
Ras Al Khaimah for White Cement and Constructi	0.167	0.000	0.00%	1.25	23.88	4.97	84	0.0%	32.5%	0.00	0.00	5.4%	4.2%	0.175	0.061	0.18%
Combined Group Contracting	0.399	0.004	1.01%	1.43	6.48	6.33	68	1.0%	12.7%	0.11	0.27	24.3%	5.4%	0.458	0.286	0.15%
Kuwait and Gulf Link Transport	0.068	0.000	-0.44%	0.40	5.22	0.00	19	-0.4%	-0.6%	0.03	0.45	8.0%	1.8%	0.106	0.049	0.04%
Shuaiba Industrial	0.239	0.010	4.37%	1.25	18.23	5.24	24	4.4%	6.2%	0.02	0.07	6.9%	5.5%	0.310	0.153	0.05%
National Cleaning	0.044	-0.002	-5.17%	0.34	NM	0.00	10	-5.2%	-22.7%	0.00	0.04	-10.5%	-3.1%	0.080	0.041	0.02%
Fujairah Cement Industries	0.039	0.001	2.37%	0.21	NM	0.00	14	2.4%	-28.0%	0.00	0.00	-13.3%	-6.8%	0.069	0.029	0.03%
Mubarrad Holding	0.094	0.001	1.19%	0.71	8.09	5.41	15	1.2%	-15.0%	0.01	0.16	9.1%	8.0%	0.130	0.086	0.03%
Specialities Group Holding	0.133	0.004	3.10%	0.71	18.12	0.00	21	3.1%	3.9%	0.13	0.98	3.9%	3.2%	0.169	0.096	0.05%
Salbookh Trading	0.022	0.000	-0.46%	0.61	NM	0.00	2	-0.5%	-49.8%	0.00	0.13	-48.9%	-27.7%	0.072	0.018	0.00%
Metal and Recycling	0.078	-0.003	-3.70%	0.99	NM	0.00	7	-3.7%	-17.9%	0.00	0.01	-15.1%	-3.3%	0.185	0.078	0.02%
Equipment Holding	0.048	0.000	-0.42%	0.77	NM	0.00	4	-0.4%	-12.5%	0.00	0.02	-11.4%	-3.2%	0.079	0.031	0.01%
Jassim Transport & Stevedoring	0.355	-0.005	-1.39%	1.23	17.03	4.44	53	-1.4%	-12.8%	0.01	0.12	7.4%	5.7%	0.450	0.344	0.12%
Total Industrials - 24 Companies							4,510			5.78	12.87					9.79%

DAILY MARKET COVERAGE REPORT

NIC MENA SECURITIES - RESEARCH AND STUDIES DEP



Insurance	Price			Valuation Multiples			MKT Cap	Price Performance		Trading Indicators		ROE	ROA	52 Week (KD)		MKT Cap
	Company	Close (KD)	Day Δ	Day % Δ	PBV(X)	PE(X)		DY%	Mn KD	MTD(%)	YTD (%)			Value (Mn KD)	(Mn Shrs)	
Gulf Insurance Group	1.010	0.000	0.00%	1.13	4.15	10.50	287	0.0%	-5.6%	0.00	0.00	28.9%	5.5%	1.200	0.696	0.62%
Al Ahleia Insurance	0.514	-0.027	-4.99%	0.82	7.57	6.47	111	-5.0%	1.8%	0.00	0.01	11.8%	4.3%	0.612	0.453	0.24%
Kuwait Insurance	0.388	0.000	0.00%	0.56	6.25	8.51	72	0.0%	0.3%	0.00	0.00	10.6%	5.9%	0.459	0.379	0.16%
Kuwait Reinsurance	0.255	0.000	0.00%	0.92	9.40	1.80	61	0.0%	1.1%	0.00	0.00	10.6%	3.4%	0.373	0.194	0.13%
Bahrain Kuwait Insurance	0.191	0.000	0.00%	1.52	13.62	8.44	29	0.0%	0.0%	0.00	0.00	11.3%	2.0%	0.191	0.191	0.06%
Warba Insurance	0.148	-0.002	-1.33%	0.59	9.85	6.67	25	-1.3%	-6.9%	0.01	0.06	6.3%	2.2%	0.176	0.130	0.05%
First Takaful Insurance	0.048	0.000	0.00%	0.62	79.33	0.00	5	0.0%	-4.8%	0.00	0.00	0.8%	0.5%	0.081	0.041	0.01%
Wethaq Takaful Insurance	0.035	0.000	1.16%	0.31	12.89	0.00	4	1.2%	-31.6%	0.00	0.02	2.4%	2.4%	0.102	0.022	0.01%
Total Insurance - 8 Companies							593			0.01	0.08					1.29%

Energy	Price			Valuation Multipels			MKT Cap	Price Performance		Trading Indicators		ROE	ROA	52 Week (KD)		MKT Cap
	Company	Close (KD)	Day Δ	Day % Δ	PBV(X)	PE(X)		DY%	Mn KD	MTD(%)	YTD (%)			Value (Mn KD)	(Mn Shrs)	
National Petroleum Services	0.725	-0.006	-0.82%	1.76	15.63	4.79	70	-0.8%	-11.6%	0.02	0.03	11.1%	9.2%	0.915	0.700	0.15%
Independent Petroleum Group	0.450	0.000	0.00%	0.85	15.36	6.67	81	0.0%	-23.5%	0.00	0.00	5.5%	1.1%	0.665	0.425	0.18%
Burgan for Well Drilling Trading and Maintenance	0.145	0.000	0.00%	0.50	15.31	2.01	34	0.0%	1.4%	0.06	0.45	3.3%	1.0%	0.201	0.137	0.07%
Energy House Holding	0.050	0.007	16.71%	1.89	NM	0.00	38	16.7%	-20.3%	0.05	1.00	-8.1%	-2.7%	0.086	0.036	0.08%
Gulf Petroleum Investment	0.017	0.000	-1.20%	0.23	NM	0.00	8	-1.2%	-32.7%	0.01	0.81	-3.6%	-2.2%	0.031	0.016	0.02%
Senergy Holding	0.046	0.002	5.03%	0.90	104.32	0.00	9	5.0%	-6.3%	0.06	1.34	0.9%	0.6%	0.063	0.040	0.02%
Total Energy - 6 Companies							240			0.20	3.62					0.52%

DAILY MARKET COVERAGE REPORT

NIC MENA SECURITIES - RESEARCH AND STUDIES DEP



Real Estate Company	Price			Valuation Multiples			MKT Cap	Price Performance		Trading Indicators		ROE	ROA	52 Week (KD)		MKT Cap
	Close (KD)	Day Δ	Day % Δ	PBV(X)	PE(X)	DY%	Mn KD	MTD(%)	YTD (%)	Value (Mn KD)	(Mn Shrs)	(%)	(%)	High	Low	%
Mabane Co.	0.826	-0.012	-1.43%	1.94	18.05	1.58	1,026	-1.4%	10.4%	0.41	0.49	11.2%	5.4%	0.887	0.666	2.23%
Salhia Real Estate	0.440	0.002	0.46%	1.54	22.47	3.26	228	0.5%	-12.7%	0.12	0.28	6.7%	2.6%	0.578	0.428	0.50%
Commercial Real Estate	0.114	0.002	1.79%	0.69	14.98	4.46	201	1.8%	-8.8%	0.44	3.84	4.8%	2.6%	0.140	0.103	0.44%
National Real Estate	0.237	0.003	1.28%	0.92	1.74	0.00	371	1.3%	7.2%	0.79	3.38	59.6%	37.1%	0.255	0.164	0.80%
Tamdeen Real Estate	0.335	0.005	1.52%	0.62	10.84	3.03	135	1.5%	-1.2%	0.00	0.00	6.7%	2.4%	0.375	0.252	0.29%
Kuwait Real Estate	0.159	0.003	1.92%	1.15	23.25	1.87	148	1.9%	-8.5%	0.76	4.81	5.1%	2.1%	0.187	0.118	0.32%
United Real Estate	0.080	-0.002	-2.91%	0.52	NM	0.00	86	-2.9%	6.1%	0.02	0.20	-2.6%	-1.0%	0.121	0.058	0.19%
First Dubai for Real Estate Development	0.071	0.000	0.14%	0.70	59.92	0.00	52	0.1%	-32.2%	0.08	1.13	1.2%	1.0%	0.120	0.061	0.11%
Al Mazaya Holding	0.064	0.000	-0.31%	0.66	73.68	0.00	40	-0.3%	-16.2%	0.10	1.55	0.9%	0.5%	0.122	0.060	0.09%
Ajial Real Estate Entertainment	0.293	0.000	0.00%	0.44	17.12	1.71	57	0.0%	-3.6%	0.00	0.00	2.6%	2.1%	0.345	0.234	0.12%
Injazzat Real Estate Development	0.080	0.001	0.89%	0.47	8.18	6.33	27	0.9%	-20.3%	0.01	0.15	5.7%	3.0%	0.114	0.073	0.06%
Munshaat Real Estate Projects	0.070	0.000	0.00%	2.34	NM	0.00	23	0.0%	-2.1%	0.00	0.00	-61.1%	-12.8%	0.081	0.045	0.05%
Aayan Real Estate	0.080	0.003	4.33%	0.57	NM	0.00	33	4.3%	-10.2%	0.21	2.64	-0.4%	0.7%	0.109	0.073	0.07%
Al Argan International Real Estate	0.091	0.000	0.00%	0.30	NM	0.00	23	0.0%	-22.2%	0.00	0.04	-1.5%	-0.4%	0.144	0.086	0.05%
Al-Enmaa Real Estate	0.068	-0.001	-1.73%	0.75	NM	0.00	31	-1.7%	-8.6%	0.02	0.26	-4.9%	-3.1%	0.091	0.063	0.07%
Ream Real Estate	0.090	0.000	0.00%	1.02	NM	0.00	10	0.0%	0.0%	0.00	0.00	-44.6%	-21.4%	0.090	0.090	0.02%
Arkan Al Kuwait Real Estate	0.139	0.000	0.00%	1.03	18.99	4.32	35	0.0%	12.1%	0.00	0.00	5.5%	1.7%	0.152	0.102	0.08%
Kuwait Business Town Real Estate	0.079	0.000	-0.13%	0.95	18.61	0.00	48	-0.1%	-4.6%	0.07	0.92	4.5%	3.2%	0.104	0.069	0.10%
Dalqan Real Estate	0.213	-0.006	-2.74%	1.94	199.07	0.00	13	-2.7%	-1.8%	0.01	0.03	1.0%	1.0%	0.300	0.197	0.03%
Sokouk Holding	0.025	-0.001	-2.77%	0.58	NM	0.00	14	-2.8%	-24.5%	0.00	0.10	-13.2%	-7.1%	0.038	0.022	0.03%
Tijara and Realestate Investment	0.068	0.000	-0.29%	0.63	13.44	4.40	25	-0.3%	11.3%	0.05	0.73	4.7%	2.5%	0.089	0.046	0.05%
Al-Arabiya Real Estate	0.042	0.001	3.41%	0.50	NM	0.00	21	3.4%	1.2%	0.20	4.83	-23.8%	-7.6%	0.052	0.032	0.05%
Aqar Real Estate Investments	0.068	0.002	2.58%	0.55	18.15	4.04	16	2.6%	-14.1%	0.01	0.10	3.1%	2.5%	0.098	0.064	0.03%
Mashaer Holding	0.071	0.006	9.91%	0.84	NM	0.00	13	9.9%	1.6%	0.01	0.09	-8.3%	-5.2%	0.086	0.061	0.03%
Dar Al Thuraya Real Estate	0.166	0.010	6.41%	1.44	24.78	0.00	24	6.4%	58.1%	0.00	0.00	6.0%	5.2%	0.172	0.073	0.05%
Osos Holding Group	0.122	-0.003	-2.40%	0.96	5.85	8.00	13	-2.4%	16.2%	0.02	0.21	17.9%	11.3%	0.147	0.088	0.03%
Al Massaleh Real Estate	0.044	0.002	3.57%	0.60	NM	0.00	10	3.6%	-16.5%	0.00	0.01	-15.3%	-3.3%	0.060	0.038	0.02%
Kuwait Remal Real Estate	0.015	0.000	0.00%	1.77	NM	0.00	5	0.0%	-22.5%	0.00	0.00	-106.3%	-12.4%	0.025	0.014	0.01%
Kuwait Real Estate Holding	0.045	0.002	3.93%	0.68	3.13	0.00	8	3.9%	-14.8%	0.00	0.11	27.0%	8.3%	0.059	0.034	0.02%
Taameer Real Estate Investment	0.027	0.001	3.46%	0.42	269.00	0.00	6	3.5%	-34.9%	0.05	1.99	0.2%	-0.1%	0.054	0.022	0.01%
Sanam Real Estate	0.079	-0.001	-0.76%	0.99	10.72	0.00	10	-0.8%	-0.3%	0.00	0.01	9.5%	8.6%	0.100	0.048	0.02%
Mena Real Estate	0.035	0.000	-1.12%	0.31	NM	0.00	5	-1.1%	-29.4%	0.02	0.65	-4.9%	-3.6%	0.105	0.031	0.01%
Al Masaken International Real Estate Developmen	0.031	-0.001	-4.39%	0.46	NM	0.00	3	-4.4%	-30.5%	0.07	2.43	-1.3%	-0.5%	0.069	0.030	0.01%
Real Estate Trade Centers	0.051	-0.003	-4.66%	0.29	56.89	0.00	7	-4.7%	-26.9%	0.00	0.04	0.5%	0.4%	0.123	0.043	0.02%
Ajwan Gulf Real Estate	0.015	0.000	0.00%	261.17	NM	0.00	2	0.0%	-38.5%	0.00	0.00	-5.5%	-3.2%	0.029	0.013	0.00%
Al Mudon International Real Estate	0.021	0.000	0.00%	0.17	NM	0.00	2	0.0%	0.0%	0.00	0.00	-0.4%	-0.4%	0.021	0.021	0.00%
Land United Real Estate	0.072	0.002	3.29%	0.65	NM	0.00	11	3.3%	-23.0%	0.08	1.10	-5.0%	-1.7%	0.200	0.065	0.02%
Total Real Estate - 36 Companies							2,780			3.57	32.11					6.03%

DAILY MARKET COVERAGE REPORT

NIC MENA SECURITIES - RESEARCH AND STUDIES DEP



Technology	Price			Valuation Multiples			MKT Cap	Price Performance		Trading Indicators		ROE	ROA	52 Week (KD)		MKT Cap
	Close (KD)	Day Δ	Day % Δ	PBV(X)	PE(X)	DY%	Mn KD	MTD(%)	YTD (%)	Value (Mn KD)	(Mn Shrs)	(%)	(%)	High	Low	%
Automated Systems	0.092	0.000	0.00%	0.80	NM	0.00	9	0.0%	-2.1%	0.00	0.00	-3.3%	-2.9%	0.122	0.082	0.02%
Total Technology - 1 Companies				0.80	NM	0.0%	9			0.00	0.00	-3.34%	-2.91%			0.02%

Telecom	Price			Valuation Multiples			MKT Cap	Price Performance		Trading Indicators		ROE	ROA	52 Week (KD)		MKT Cap
	Close (KD)	Day Δ	Day % Δ	PBV(X)	PE(X)	DY%	Mn KD	MTD(%)	YTD (%)	Value (Mn KD)	(Mn Shrs)	(%)	(%)	High	Low	%
Mobile Telecommunications	0.627	-0.003	-0.48%	2.40	15.59	5.24	2,713	-0.5%	5.4%	2.68	4.28	15.5%	4.0%	0.698	0.569	5.89%
Kuwait Telecommunications	0.730	0.005	0.69%	3.39	16.37	4.14	729	0.7%	70.8%	0.26	0.36	21.5%	11.0%	1.189	0.416	1.58%
National Mobile Telecommunications	0.941	-0.048	-4.85%	0.90	17.66	3.54	472	-4.9%	50.8%	0.02	0.02	5.1%	2.9%	1.280	0.615	1.02%
AAN Digital Services	0.016	0.000	0.00%	0.60	NM	0.00	14	0.0%	-2.4%	0.00	0.00	NM	NM	0.020	0.013	0.03%
Hayat Communications	0.072	-0.002	-2.04%	0.58	NM	0.00	6	-2.0%	-32.2%	0.02	0.22	-0.3%	-0.1%	0.124	0.066	0.01%
Telecom - 5 Companies							3,934			2.98	4.88					8.54%

Utilities	Price			Valuation Multiples			MKT Cap	Price Performance		Trading Indicators		ROE	ROA	52 Week (KD)		MKT Cap
	Close (KD)	Day Δ	Day % Δ	PBV(X)	PE(X)	DY%	Mn KD	MTD(%)	YTD (%)	Value (Mn KD)	(Mn Shrs)	(%)	(%)	High	Low	%
Shamal Az-Zour Al-Oula Power & Water	0.215	0.000	0.00%	2.70	16.58	8.37	237	0.0%	-5.7%	0.10	0.48	18.1%	2.8%	0.247	0.210	0.51%
Total Utilities - 1 Companies							237			0.10	0.48					0.51%

Total Market 159 Companies				2.72	27.90	3.18	46,083			59.28	250.03					100%
-----------------------------------	--	--	--	-------------	--------------	-------------	---------------	--	--	--------------	---------------	--	--	--	--	-------------

End of Report

The information contained in this document is proprietary to NIC and is for use only by the persons to whom it is issued. This document is confidential and may not be distributed either in part or in whole without the express agreement of NIC. It is intended solely for the use of the individual or entity to whom it is addressed and others authorized to receive it.

Note : ROE and ROA is calculated based on LFY net profit & shareholders' equity and LFY Operating Profits & Total Assets

Sources : National Investments Company Research and Studies Departments, Boursa, Refinitiv.



شركة الاستثمار الوطنية
NATIONAL INVESTMENTS COMPANY

Sharq, Al Mutanabi Street, Khaleejia Tower | P.O. Box 25667, Safat 13117, Kuwait

T.: +965 2226 6666 | Fax: +965 2226 6793 | www.nic.com.kw