



شركة الاستثمار الوطنية  
NATIONAL INVESTMENTS COMPANY

## Bursa Kuwait – Daily Market Report MENA Securities – Research & Studies Dep.

31<sup>st</sup> January 2023



[www.nic.com.kw](http://www.nic.com.kw)

# DAILY MARKET COVERAGE REPORT

NIC MENA SECURITIES - RESEARCH AND STUDIES DEP



## Kuwait Market Watch

Tuesday, January 31, 2023

Index	Close	DTD Chg Net	DTD (%)	YTD (%)	52W High	52W Low	MKT CAP Bn (KD)	PBV (X)	PE (X)	DY (%)
All Share Index	7,277.29	-4.03	-0.06%	-0.20%	8,472.15	6,861.80	43.25	1.90	25.13	4.13
Premier Index	8,085.41	1.45	0.02%	-0.37%	9,437.37	7,653.27	33.84	1.97	20.24	4.67
Main Index	5,623.36	-19.53	-0.35%	0.47%	6,600.62	5,190.37	9.41	1.66	42.73	2.19
NIC 50 Index	9,067.96	-1.26	-0.01%	-0.17%	10,553.82	8,674.16	33.14	1.97	20.24	4.67

Index	Value Mn(KD)	Vlolume (Mn share)
All Share Index	44.45	113.11
Premier Index	36.08	60.63
Main Index	8.37	52.48
NIC 50 Index	43.02	99.56

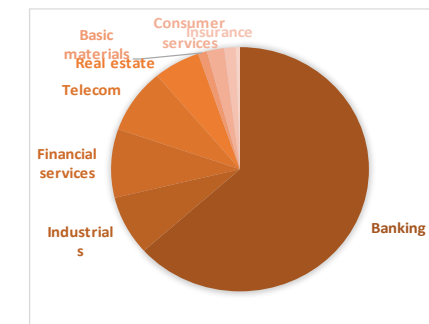
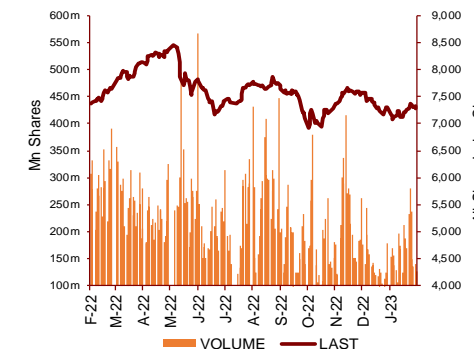
Market Breadth	UP ↑	Down ↓	No Chg ↔
All Share Index	46	52	55
Premier Index	6	15	4
Main Index	40	37	51
NIC 50 Index	14	24	12

Today's Top 5 Gainer %	Close KD	Value KD	DTD (%)
Salbookh Trading	0.015	21.905	11.76%
Al Deera Holding	0.152	87	7.80%
Credit Rating and Collection	0.020	218.518	4.74%
Sokouk Holding	0.023	21,561	4.07%
Osos Holding Group	0.109	1	3.81%

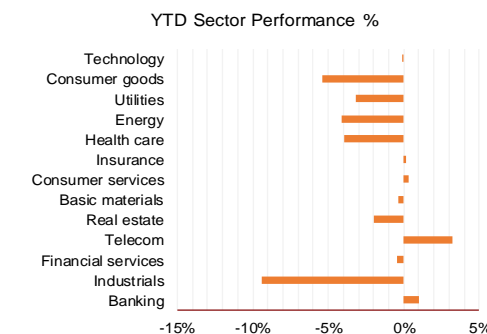
Today's Top 5 Loser %	Close KD	Value KD	DTD (%)
Energy House Holding	0.100	56,846	-9.09%
Wethaq Takaful Insurance	0.023	16,446	-5.00%
Sanam Real Estate	0.059	0	-4.88%
National Mobile Telecommu	1.107	65,191	-3.32%
Kuwait Telecommunication	0.700	2,657,576	-3.18%

Today's Top 5 by Value	Close KD	Trade Val Mn(KD)	DTD (%)
Kuwait Finance House	0.836	14.21	1.21%
National Bank of Kuwait	1.097	6.53	-1.17%
Mobile Telecommunications	0.554	4.07	-1.07%
Agility Public Warehousing	0.591	3.75	1.20%
Kuwait Telecommunications	0.700	2.66	-3.18%

Top 5 by Volume	Close KD	Trade Vol Mn(Shrs)	DTD (%)
Kuwait Finance House	0.836	17.13	1.21%
National Real Estate	0.101	9.75	-0.20%
GFH Financial Group	0.078	9.66	0.00%
Mobile Telecommunications	0.554	7.35	-1.07%
Agility Public Warehousing	0.591	6.36	1.20%



Sector	Close	DTD Chg Net	DTD (%)	YTD (%)	52W High	52W Low	MKT CAP Bn (KD)	PBV (X)	PE (X)	DY (%)
Banking	1,813.34	1.210	0.07%	1.0%	1,992.2	1,680.0	27.038	1.47	26.55	1.82
Industrials	979.86	2.100	0.21%	-9.4%	1,443.6	949.2	3.354	0.98	23.93	3.17
Financial services	1,253.83	2.100	0.17%	-0.4%	1,678.3	1,190.4	3.869	0.94	81.71	2.91
Telecom	1,197.64	-22.180	-1.82%	3.2%	1,514.7	1,091.8	3.665	1.81	14.17	2.62
Real estate	1,188.84	3.840	0.32%	-2.0%	1,413.0	1,155.8	2.495	0.68	31.10	1.34
Basic materials	863.11	0.810	0.09%	-0.3%	1,233.3	800.8	0.477	1.01	8.33	6.17
Consumer services	479.60	-1.690	-0.35%	0.3%	739.2	443.8	0.927	2.05	13.00	2.14
Insurance	1,553.69	0.540	0.03%	0.2%	1,665.2	1,455.6	0.619	0.83	14.95	5.25
Health care	443.69	0.000	0.00%	-3.9%	821.7	416.5	0.220	38.26	13.52	1.14
Energy	1,098.50	7.260	0.67%	-4.2%	1,446.5	975.7	0.222	0.76	11.14	1.71
Utilities	478.95	0.000	0.00%	-3.2%	600.0	463.2	0.200	1.69	14.97	9.89
Consumer goods	1,403.73	-2.350	-0.17%	-5.4%	1,641.0	1,351.5	0.145	0.96	NM	1.98
Technology	695.49	0.000	0.00%	-0.1%	800.3	539.1	0.010	0.85	NM	-
	7,277.29	-4.03	-0.06%	-0.2%	8,472.2	6,861.8	43.25	1.90	25.13	4.13



# DAILY MARKET COVERAGE REPORT

## NIC MENA SECURITIES - RESEARCH AND STUDIES DEP



### Premier Market

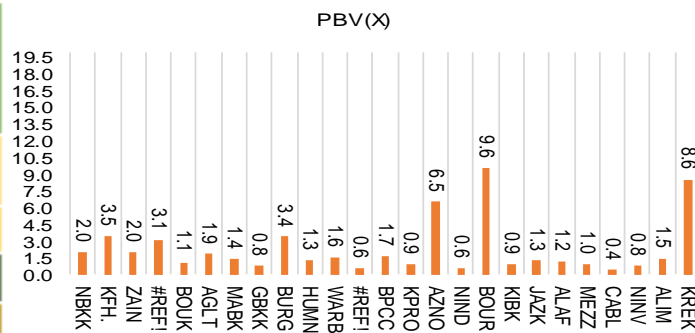
Tuesday, January 31, 2023

Premier Market	Price			Valuation Multiples			MKT Cap	Price Performance		Trading Indicators		ROE	ROA	52 Week (KD)		MKT Cap
	Close (KD)	Day Δ	Day % Δ	PBV(X)	PE(X)	DY%	Mn KD	MTD(%)	YTD (%)	Value (Mn KD)	(Mn Shrs)	(%)	(%)	High	Low	%
National Bank of Kuwait	1.097	-0.013	-1.17%	2.04	16.32	2.19	8,285	2%	2%	6.53	5.95	12.6%	1.6%	1.143	0.962	24.48%
Kuwait Finance House	0.836	0.010	1.21%	3.45	28.21	1.32	11,156	1%	2%	14.21	17.13	12.4%	1.6%	1.039	0.754	32.97%
Mobile Telecommunications	0.554	-0.006	-1.07%	1.99	12.74	5.89	2,397	-1%	-2%	4.07	7.35	15.7%	4.3%	0.698	0.541	7.08%
Boubyan Bank	0.784	-0.003	-0.38%	3.09	56.12	0.57	2,931	-2%	-2%	0.98	1.26	6.2%	0.7%	0.965	0.718	8.66%
Agility Public Warehousing	0.591	0.007	1.20%	1.09	38.96	2.85	1,508	-18%	-18%	3.75	6.36	2.3%	1.9%	1.062	0.563	4.46%
Mabane Co.	0.855	0.008	0.94%	1.85	17.38	1.56	1,062	0%	1%	0.45	0.53	11.1%	5.5%	0.910	0.720	3.14%
Gulf Bank	0.313	-0.002	-0.63%	1.42	16.43	2.12	1,002	0%	0%	0.97	3.09	8.9%	0.9%	0.385	0.282	2.96%
Burgan Bank	0.224	0.000	0.00%	0.81	22.27	2.13	735	2%	2%	0.13	0.56	3.8%	0.7%	0.307	0.205	2.17%
Human Soft Holding	3.391	-0.049	-1.42%	3.41	7.15	11.63	413	-3%	-4%	1.18	0.35	49.6%	34.9%	3.704	3.006	1.22%
Warba Bank	0.240	-0.001	-0.41%	1.32	24.22	0.00	480	2%	2%	0.60	2.50	5.8%	0.6%	0.289	0.216	1.42%
Boubyan Petrochemical	0.799	0.001	0.13%	1.58	8.36	7.52	417	-1%	0%	0.11	0.14	20.1%	10.5%	1.125	0.750	1.23%
Kuwait Projects Company Holding	0.112	0.000	0.00%	0.57	NM	4.46	544	0%	0%	0.45	3.99	-2.8%	0.0%	0.215	0.099	1.61%
Shamal Al-Zour Al-Oula Power & Water	0.182	0.000	0.00%	1.69	14.97	9.89	200	-4%	-3%	0.07	0.40	14.8%	2.7%	0.228	0.176	0.59%
National Industries Group Holding	0.213	0.002	0.95%	0.94	10.73	5.27	458	-2%	-2%	0.62	2.93	5.3%	2.9%	0.314	0.205	1.35%
Boursa Kuwait Securities Co	2.036	-0.005	-0.24%	6.53	21.18	3.18	409	-1%	-1%	0.03	0.02	32.4%	22.9%	2.870	1.880	1.21%
Kuwait International Bank	0.203	0.000	0.00%	0.64	36.58	1.89	215	4%	4%	0.63	3.10	1.7%	0.3%	0.259	0.186	0.64%
Jazeera Airways	1.620	-0.005	-0.31%	9.58	12.37	2.83	356	-15%	-15%	0.13	0.08	92.1%	11.6%	2.099	1.485	1.05%
Alafco Aviation Lease and Finance	0.214	-0.001	-0.47%	0.91	NM	0.00	204	6%	5%	0.11	0.49	-23.6%	-4.7%	0.234	0.162	0.60%
Mezzan Holding	0.394	-0.003	-0.76%	1.25	NM	3.95	123	0%	0%	0.11	0.27	-7.2%	-2.8%	0.593	0.345	0.36%
Gulf Cable and Electrical Industries Group	1.235	-0.001	-0.08%	1.19	11.93	4.85	258	1%	2%	0.06	0.05	10.2%	NM	1.850	0.959	0.76%
National Investments	0.240	-0.004	-1.64%	0.98	17.66	18.44	191	1%	1%	0.06	0.25	5.4%	4.4%	0.475	0.211	0.57%
Alimtiq Investment Group	0.070	0.000	0.43%	0.41	NM	13.01	71	-7%	-7%	0.06	0.92	-0.9%	-0.4%	0.138	0.068	0.21%
Kuwait Real Estate	0.108	-0.001	-0.92%	0.79	15.79	2.67	100	0%	0%	0.19	1.78	4.9%	1.9%	0.180	0.097	0.30%
Integrated Holding	0.362	-0.004	-1.09%	1.47	23.51	2.73	92	-2%	-2%	0.29	0.80	6.4%	4.1%	0.478	0.321	0.27%
ALI ALGanim	0.848	-0.002	-0.24%	8.55	12.21	5.60	232	5%	nm	0.29	0.34	30.5%	12.1%	0.966	0.750	0.69%
<b>Total</b>		<b>1.45</b>	<b>0.02%</b>	<b>1.97</b>	<b>20.24</b>	<b>4.67</b>	<b>33,838</b>	<b>-0.4%</b>	<b>-0.4%</b>	<b>36.08</b>	<b>60.29</b>					<b>100%</b>

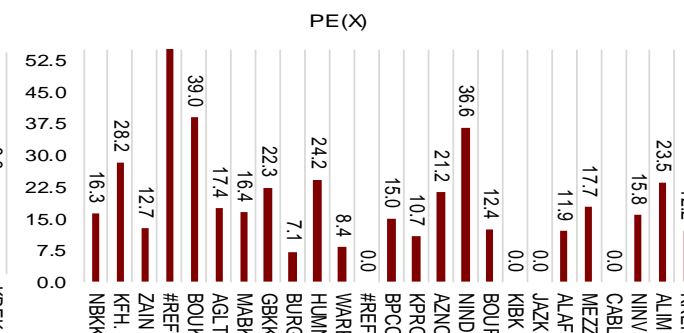
Market Capitalization



Price to Book Value

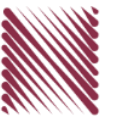


Price to Earning Value



# DAILY MARKET COVERAGE REPORT

## NIC MENA SECURITIES - RESEARCH AND STUDIES DEP



Premier Market Company	Price			Valuation Multiples			MKT Cap Mn KD	Price Performance		ROE (%)	ROA (%)
	Close (kD)	Day Δ	Day % Δ	PBV(X)	PE(X)	DY%		MTD(%)	YTD (%)		
National Bank of Kuwait	1.097	-0.013	-1.17%	2.04	16.3	2.19	8,285	2.0%	1.8%	12.6%	1.6%
Kuwait Finance House	0.836	0.010	1.21%	3.45	28.2	1.32	11,156	1.3%	1.6%	12.4%	1.6%
Mobile Telecommunications	0.554	-0.006	-1.07%	1.99	12.7	5.89	2,397	-1.1%	-1.6%	15.7%	4.3%
Boubyan Bank	0.784	-0.003	-0.38%	3.09	56.1	0.57	2,931	-2.0%	-1.8%	6.2%	0.7%
Agility Public Warehousing	0.591	0.007	1.20%	1.09	39.0	2.85	1,508	-17.6%	-17.9%	2.3%	1.9%
Mabane Co.	0.855	0.008	0.94%	1.85	17.4	1.56	1,062	0.4%	0.8%	11.1%	5.5%
Gulf Bank	0.313	-0.002	-0.63%	1.42	16.4	2.12	1,002	-0.3%	-0.3%	8.9%	0.9%
Burgan Bank	0.224	0.000	0.00%	0.81	22.3	2.13	735	2.3%	2.3%	3.8%	0.7%
Human Soft Holding	3.391	-0.049	-1.42%	3.41	7.1	11.63	413	-3.4%	-3.7%	49.6%	34.9%
Warba Bank	0.240	-0.001	-0.41%	1.32	24.2	0.00	480	2.1%	2.1%	5.8%	0.6%
Boubyan Petrochemical	0.799	0.001	0.13%	1.58	8.4	7.52	417	-0.7%	-0.1%	20.1%	10.5%
Kuwait Projects Company Holding	0.112	0.000	0.00%	0.57	NM	4.46	544	0.0%	0.0%	-2.8%	0.0%
Shamal Al-Zour Al-Oula Power & Water	0.182	0.000	0.00%	1.69	15.0	9.89	200	-3.7%	-3.2%	14.8%	2.7%
National Industries Group Holding	0.213	0.002	0.95%	0.94	10.7	5.27	458	-1.8%	-1.8%	5.3%	2.9%
Boursa Kuwait Securities Co	2.036	-0.005	-0.24%	6.53	21.2	3.18	409	-0.7%	-0.8%	32.4%	22.9%
Kuwait International Bank	0.203	0.000	0.00%	0.64	36.6	1.89	215	3.6%	3.6%	1.7%	0.3%
Jazeera Airways	1.620	-0.005	-0.31%	9.58	12.4	2.83	356	-14.7%	-14.7%	92.1%	11.6%
Alafco Aviation Lease and Finance	0.214	-0.001	-0.47%	0.91	NM	0.00	204	5.9%	5.4%	-23.6%	-4.7%
Mezzan Holding	0.394	-0.003	-0.76%	1.25	NM	3.95	123	0.3%	0.3%	-7.2%	-2.8%
Gulf Cable and Electrical Industries Group	1.235	-0.001	-0.08%	1.19	11.9	4.85	258	1.1%	1.6%	10.2%	8.4%
National Investments	0.240	-0.004	-1.64%	0.98	17.7	18.44	191	1.3%	1.3%	5.4%	4.4%
Alimti Investment Group	0.070	0.000	0.43%	0.41	NM	13.01	71	-7.2%	-7.2%	-0.9%	-0.4%
Kuwait Real Estate	0.108	-0.001	-0.92%	0.79	15.8	2.67	100	0.0%	0.0%	4.9%	1.9%
Integrated Holding	0.362	-0.004	-1.09%	1.47	23.5	2.73	92	-1.9%	-2.2%	6.4%	4.1%
ALI ALGanim	0.848	-0.002	-0.24%	4.25	12.2	5.60	232	5.3%	nm	30.5%	12.1%
<b>Total</b>		<b>1.45</b>	<b>0.02%</b>	<b>1.97</b>	<b>20.24</b>	<b>4.67</b>	<b>33,606</b>	<b>-0.4%</b>	<b>-0.4%</b>		

.bKp	Premier Market Discription	Price			Moving Average		RSI 14 Day	MKT Cap Mn KD	Price Performance		52 Week (KD)	
		Close (kD)	Day Δ	Day % Δ	50 Day	200 Day			MTD(%)	YTD (%)	High	Low
	Premier Index	8,085	1.45	0.02%	8,163	8,398	53	33,606	-0.4%	-0.4%	9,437	7,653

### Top 5 Performrs (Today's Price Change)

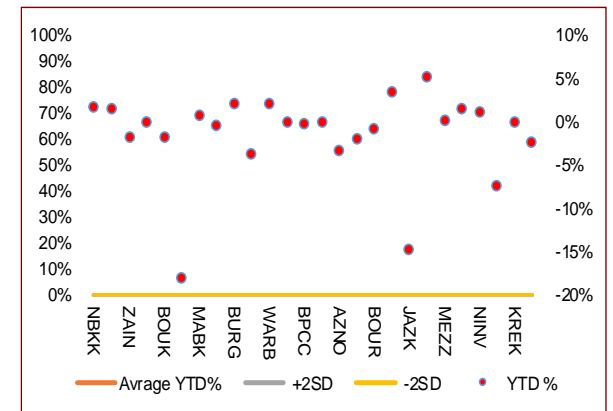
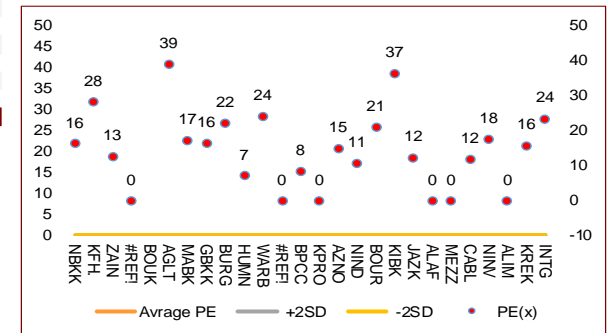
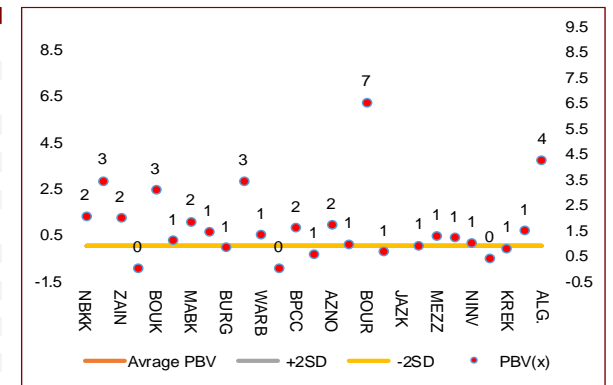
KFH.KW	Kuwait Finance House	0.836	0.010	1.21%	0.828	0.862	58	11,156	1.3%	1.6%	1.039	0.754
AGLT.KW	Agility Public Warehousing	0.591	0.007	1.20%	0.685	0.808	35	1,508	-17.6%	-17.9%	1.062	0.563
NIND.KW	National Industries Group Holding	0.213	0.002	0.95%	0.223	0.251	53	458	-1.8%	-1.8%	0.314	0.205
MABK.KW	Mabane Co.	0.855	0.008	0.94%	0.849	0.833	62	1,062	0.4%	0.8%	0.910	0.720
ALIMK.KW	Alimti Investment Group	0.070	0.000	0.43%	0.074	0.089	40	71	-7.2%	-7.2%	0.138	0.068

### Middel Performrs (Today's Price Change)

BPCC.KW	Boubyan Petrochemical	0.799	0.001	0.13%	0.799	0.890	78	417	-0.7%	-0.1%	1.125	0.750
BURG.KW	Burgan Bank	0.224	0.000	0.00%	0.223	0.241	50	735	2.3%	2.3%	0.307	0.205
KIBK.KW	Kuwait International Bank	0.203	0.000	0.00%	0.197	0.210	64	215	3.6%	3.6%	0.259	0.186
AZNOULA.KW	Shamal Al-Zour Al-Oula Power & Water	0.182	0.000	0.00%	0.187	0.200	38	200	-3.7%	-3.2%	0.228	0.176
CABL.KW	Gulf Cable and Electrical Industries Group	1.235	-0.001	-0.08%	1.223	1.352	68	258	1.1%	1.6%	1.850	0.959
BOURSA.KW	Boursa Kuwait Securities Co	2.036	-0.005	-0.24%	2.131	2.309	54	409	-0.7%	-0.8%	2.870	1.880
JAZK.KW	Jazeera Airways	1.620	-0.005	-0.31%	1.746	1.818	18	356	-14.7%	-14.7%	2.099	1.485
BOUK.KW	Boubyan Bank	0.784	-0.003	-0.38%	0.100	0.100	49	2,931	-2.0%	-1.8%	1.210	0.996
WARB.KW	Warba Bank	0.240	-0.001	-0.41%	0.239	0.248	60	480	2.1%	2.1%	0.289	0.216
GBKK.KW	Gulf Bank	0.313	-0.002	-0.63%	0.319	0.332	60	1,002	-0.3%	-0.3%	0.385	0.282
MEZZ.KW	Mezzan Holding	0.394	-0.003	-0.76%	0.398	0.430	49	123	0.3%	0.3%	0.593	0.345
KREK.KW	Kuwait Real Estate	0.108	-0.001	-0.92%	0.109	0.126	47	100	0.0%	0.0%	0.180	0.097

### Bottom 5 Performrs (Today's Price Change)

ZAIN.KW	Mobile Telecommunications	0.554	-0.006	-1.07%	0.566	0.598	50	2,397	-1.1%	-1.6%	0.698	0.541
INTG.KW	Integrated Holding	0.362	-0.004	-1.09%	0.363	0.390	43	92	-1.9%	-2.2%	0.478	0.321
NBKK.KW	National Bank of Kuwait	1.097	-0.013	-1.17%	1.093	1.060	56	8,285	2.0%	1.8%	1.143	0.962
HUMN.KW	Human Soft Holding	3.391	-0.049	-1.42%	3.426	3.320	34	413	-3.4%	-3.7%	3.704	3.006
NINV.KW	National Investments	0.240	-0.004	-1.64%	0.248	0.292	54	191	1.3%	1.3%	0.475	0.211



# DAILY MARKET COVERAGE REPORT

## NIC MENA SECURITIES - RESEARCH AND STUDIES DEP



Banking Sector	Price			Valuation Multiples			MKT Cap	Price Performance		Trading Indicators		ROE	ROA	52 Week (KD)		MKT Cap
Company	Close (KD)	Day Δ	Day % Δ	PBV(X)	PE(X)	DY%	Mn KD	MTD(%)	YTD (%)	Value (Mn KD)	(Mn Shrs)	(%)	(%)	High	Low	%
National Bank of Kuwait	1.097	-0.013	-1.17%	2.04	16.32	2.19	8,285	2.0%	1.8%	6.53	5.95	12.6%	1.6%	1.143	0.962	19.16%
Kuwait Finance House	0.836	0.010	1.21%	3.45	28.21	1.32	11,156	1.3%	1.6%	14.21	17.13	12.4%	1.6%	1.039	0.754	25.80%
Boubyan Bank	0.784	-0.003	-0.38%	3.09	56.12	0.57	2,931	-2.0%	-1.8%	0.98	1.26	6.2%	0.7%	0.965	0.718	6.78%
Commercial Bank of Kuwait	0.499	-0.001	-0.20%	1.47	17.87	4.00	988	-0.2%	-0.2%	0.00	0.01	7.5%	1.3%	0.549	0.447	2.29%
Gulf Bank	0.313	-0.002	-0.63%	1.42	16.43	2.12	1,002	-0.3%	-0.3%	0.97	3.09	8.9%	0.9%	0.385	0.282	2.32%
Burgan Bank	0.224	0.000	0.00%	0.81	22.27	2.13	735	2.3%	2.3%	0.13	0.56	3.8%	0.7%	0.307	0.205	1.70%
Ahli United Bank	0.285	0.003	1.06%	0.97	25.13	1.69	642	0.7%	0.4%	0.37	1.31	3.8%	0.8%	0.324	0.250	1.48%
Warba Bank	0.240	-0.001	-0.41%	1.32	24.22	0.00	480	2.1%	2.1%	0.60	2.50	5.8%	0.6%	0.289	0.216	1.11%
Al Ahli Bank of Kuwait	0.341	0.000	0.00%	1.01	22.40	1.40	604	4.3%	5.2%	0.43	1.27	4.5%	0.6%	0.355	0.258	1.40%
Kuwait International Bank	0.203	0.000	0.00%	0.64	36.58	1.89	215	3.6%	3.6%	0.63	3.10	1.7%	0.3%	0.259	0.186	0.50%
<b>Total Banking Sector - 10 Companies</b>							<b>27,038</b>			<b>24.85</b>	<b>36.16</b>					<b>62.53%</b>

Basic Materials	Price			Valuation Multiples			MKT Cap	Price Performance		Trading Indicators		ROE	ROA	52 Week (KD)		MKT Cap
Company	Close (KD)	Day Δ	Day % Δ	PBV(X)	PE(X)	DY%	Mn KD	MTD(%)	YTD (%)	Value (Mn KD)	(Mn Shrs)	(%)	(%)	High	Low	%
Boubyan Petrochemical	0.799	0.001	0.13%	1.58	8.36	7.52	417	-0.75%	-0.12%	0.11	0.14	20.1%	10.5%	1.125	0.750	0.96%
Al Kout Industrial Projects	0.390	0.000	0.00%	1.28	4.49	10.26	39	0.00%	0.00%	0.00	0.00	31.0%	21.9%	0.545	0.390	0.09%
Kuwait Foundry	0.286	-0.001	-0.35%	1.18	12.13	0.00	21	-2.72%	-2.72%	0.00	0.00	10.8%	10.4%	0.350	0.260	0.05%
<b>Total Basic Materials - 3 Companies</b>							<b>477</b>			<b>0.11</b>	<b>0.14</b>					<b>1.10%</b>

Consumer Goods	Price			Valuation Multiples			MKT Cap	Price Performance		Trading Indicators		ROE	ROA	52 Week (KD)		MKT Cap
Company	Close (KD)	Day Δ	Day % Δ	PBV(X)	PE(X)	DY%	Mn KD	MTD(%)	YTD (%)	Value (Mn KD)	(Mn Shrs)	(%)	(%)	High	Low	%
Mezzan Holding	0.394	-0.003	-0.76%	1.25	NM	3.95	123	0.3%	0.3%	0.11	0.27	-7.2%	-2.8%	0.593	0.345	0.28%
Livestock Transport and Trading	0.108	0.002	1.89%	0.67	NM	0.00	23	-5.5%	-1.8%	0.00	0.01	-14.5%	-8.2%	0.178	0.100	0.05%
<b>Total Consumer Goods - 2 Companies</b>							<b>145</b>			<b>0.11</b>	<b>0.29</b>					<b>0.34%</b>

Consumer Services	Price			Valuation Multiples			MKT Cap	Price Performance		Trading Indicators		ROE	ROA	52 Week (KD)		MKT Cap
Company	Close (KD)	Day Δ	Day % Δ	PBV(X)	PE(X)	DY%	Mn KD	MTD(%)	YTD (%)	Value (Mn KD)	(Mn Shrs)	(%)	(%)	High	Low	%
Jazeera Airways	1.620	-0.005	-0.31%	9.58	12.37	2.83	356	-14.7%	-14.7%	0.13	0.08	92.1%	11.6%	2.099	1.485	0.82%
Kuwait National Cinema	0.980	0.000	0.00%	1.17	10.47	3.06	91	3.2%	3.2%	0.00	0.00	11.6%	5.3%	1.133	0.850	0.21%
Oula Fuel Marketing	0.141	-0.002	-1.40%	0.89	15.03	3.50	57	-2.8%	-2.8%	0.04	0.25	5.6%	2.9%	0.168	0.140	0.13%
Al Soor Fuel Marketing	0.142	-0.001	-0.70%	0.87	17.93	3.50	57	-4.7%	-4.7%	0.00	0.00	4.7%	3.5%	0.167	0.140	0.13%
Sultan Center Food Products	0.099	0.001	0.92%	0.63	NM	0.00	28	-9.3%	-9.3%	0.00	0.00	-23.2%	-5.5%	0.230	0.091	0.06%
Jiyad Holding	0.019	0.000	-1.07%	0.21	NM	0.00	3	-20.3%	-20.3%	0.03	1.78	-16.5%	-11.4%	0.089	0.015	0.01%
IFA Hotels and Resorts	0.028	0.001	1.82%	2.74	4.26	0.00	18	-1.4%	-1.4%	0.00	0.11	65.1%	2.5%	0.062	0.025	0.04%
Kuwait Resorts	0.081	-0.001	-0.74%	0.52	12.31	3.61	16	-0.1%	-0.1%	0.00	0.03	4.2%	3.8%	0.104	0.067	0.04%
Future Kid Entertainment and Real Estate	0.116	0.002	1.75%	0.97	8.90	0.00	13	4.5%	4.5%	0.00	0.03	11.6%	5.5%	0.133	0.077	0.03%
Al Eid Food	0.244	0.004	1.67%	1.87	14.53	2.85	41	-1.2%	0.0%	0.27	1.11	13.4%	10.2%	0.304	0.207	0.10%
Kuwait Hotels	0.177	0.000	0.00%	2.13	21.99	2.82	10	0.0%	0.0%	0.00	0.00	9.9%	6.4%	0.201	0.071	0.02%
Palms Agro Production	0.078	0.000	0.00%	0.78	NM	0.00	4	0.0%	0.0%	0.00	0.00	-9.5%	-7.6%	0.083	0.043	0.01%
ALI ALGanim	0.848	-0.002	-0.24%	4.25	12.21	5.60	232	5.3%	nm	0.29	0.34	30.5%	12.1%	0.966	0.750	0.54%
<b>Total Consumer Services - 13 Companies</b>							<b>927</b>			<b>0.77</b>	<b>3.74</b>					<b>2.14%</b>



# DAILY MARKET COVERAGE REPORT

## NIC MENA SECURITIES - RESEARCH AND STUDIES DEP



Financial Services	Price			Valuation Multiples			MKT Cap	Price Performance		Trading Indicators		ROE	ROA	52 Week (KD)		MKT Cap
	Company	Close (KD)	Day Δ	Day % Δ	PBV(X)	PE(X)	DY%	Mn KD	MTD(%)	YTD (%)	Value (Mn KD)	(Mn Shrs)	(%)	(%)	High	Low
Egypt Kuwait Holding	0.364	0.000	0.00%	2.11	5.63	5.87	410	-3.5%	-3.2%	0.04	0.10	37.3%	17.3%	0.449	0.353	0.95%
Kuwait Projects Company Holding	0.112	0.000	0.00%	0.57	NM	4.46	544	0.0%	0.0%	0.45	3.99	-2.8%	0.0%	0.215	0.099	1.26%
National Industries Group Holding	0.213	0.002	0.95%	0.94	10.73	5.27	458	-1.8%	-1.8%	0.62	2.93	5.3%	2.9%	0.314	0.205	1.06%
Boursa Kuwait Securities Co	2.036	-0.005	-0.24%	6.53	21.18	3.18	409	-0.7%	-0.8%	0.03	0.02	32.4%	22.9%	2.870	1.880	0.95%
GFH Financial Group	0.078	0.000	0.00%	0.92	9.56	4.64	272	3.0%	2.9%	0.75	9.66	9.4%	1.2%	0.109	0.073	0.63%
National Investments	0.240	-0.004	-1.64%	0.98	17.66	18.44	191	1.3%	1.3%	0.06	0.25	5.4%	4.4%	0.475	0.211	0.44%
Tamdeen Investment	0.610	0.000	0.00%	0.66	15.97	1.64	205	0.0%	0.0%	0.00	0.00	4.4%	3.5%	0.625	0.309	0.47%
Alimtiqaz Investment Group	0.070	0.000	0.43%	0.41	NM	13.01	71	-7.2%	-7.2%	0.06	0.92	-0.9%	-0.4%	0.138	0.068	0.16%
Commercial Facilities	0.175	-0.001	-0.57%	0.56	8.65	8.52	89	-2.2%	-2.2%	0.04	0.20	6.5%	3.6%	0.228	0.165	0.21%
Aayan Leasing and Investment	0.139	0.000	0.00%	1.03	13.16	0.00	92	5.3%	4.5%	0.27	1.96	8.2%	6.0%	0.204	0.104	0.21%
Kuwait Investment	0.150	0.003	2.04%	0.74	31.25	17.01	82	-2.6%	-1.3%	0.07	0.49	2.2%	2.1%	0.300	0.113	0.19%
Noor Financial Investment	0.175	0.003	1.74%	1.10	4.94	2.79	89	-2.8%	-1.1%	0.02	0.13	22.0%	16.2%	0.295	0.162	0.21%
Arzan Financial Group for Financing and Investmei	0.117	-0.001	-0.85%	0.81	8.61	2.05	94	2.6%	1.7%	0.05	0.44	9.4%	7.0%	0.180	0.109	0.22%
Kuwait Financial Centre	0.107	0.002	1.90%	0.53	31.10	9.07	54	1.9%	1.9%	0.04	0.40	1.7%	1.7%	0.182	0.101	0.12%
Gulf Investment House	0.417	-0.003	-0.71%	3.98	1,668.00	0.00	170	5.6%	5.6%	0.02	0.04	0.2%	0.6%	0.464	0.217	0.39%
Arabi Group Holdings	0.380	0.007	1.88%	2.24	NM	0.00	65	18.0%	18.0%	0.03	0.09	-22.8%	-3.1%	0.499	0.200	0.15%
Kuwait and Middle East Financial Investment	0.088	0.000	-0.23%	0.76	11.86	7.93	19	-6.8%	-6.8%	0.00	0.00	6.4%	3.1%	0.175	0.088	0.04%
Privatization Holding	0.035	0.000	0.00%	0.30	NM	0.00	21	-3.1%	-3.1%	0.00	0.00	-6.7%	-5.5%	0.063	0.032	0.05%
Asiya Capital Investments	0.055	0.000	-0.36%	0.51	3.51	0.00	43	-3.0%	-3.0%	0.07	1.26	15.5%	15.2%	0.071	0.037	0.10%
Umm Al Qaiwain General Investment Co	0.096	0.000	0.00%	0.59	6.38	5.20	35	0.0%	0.0%	0.00	0.00	9.8%	8.1%	0.106	0.086	0.08%
Securities House	0.070	0.000	-0.14%	0.72	12.97	0.00	30	-1.0%	-1.0%	0.00	0.04	5.5%	4.7%	0.101	0.052	0.07%
Kamco Investment	0.102	0.001	0.99%	0.57	5.89	9.90	35	-1.0%	-1.0%	0.00	0.04	9.8%	4.6%	0.167	0.089	0.08%
First Investment	0.055	0.002	3.21%	0.50	62.16	0.00	24	-13.0%	-13.0%	0.04	0.68	0.8%	0.8%	0.104	0.053	0.06%
Inovest BSC Public	0.083	0.001	1.46%	0.00	NM	0.00	25	-5.1%	-5.1%	0.00	0.01	2.9%	1.8%	0.189	0.070	0.06%
Coast Investment and Development	0.090	0.002	1.69%	0.92	28.21	5.65	42	3.6%	7.1%	0.00	0.04	3.2%	3.1%	0.125	0.066	0.10%
Al Madar Investment	0.114	0.000	0.00%	1.08	57.58	0.00	24	0.0%	0.0%	0.00	0.00	1.9%	1.9%	0.116	0.083	0.05%
Bayan Investment	0.041	0.000	0.00%	0.31	NM	0.00	13	0.0%	0.0%	0.00	0.00	-2.4%	-1.5%	0.057	0.036	0.03%
Al Manar Financing and Leasing	0.061	0.000	0.00%	0.59	12.96	0.00	16	4.4%	4.4%	0.00	0.00	4.3%	3.6%	0.079	0.049	0.04%
Manazel Holding	0.026	0.000	0.00%	0.59	8.13	0.00	11	-4.4%	-4.4%	0.00	0.02	7.0%	2.2%	0.059	0.025	0.03%
KFIC Investment	0.064	0.000	0.00%	0.49	NM	0.00	20	-1.4%	-1.4%	0.00	0.00	-1.6%	-1.1%	0.097	0.055	0.05%
National International Holding	0.122	-0.001	-0.81%	0.74	16.76	3.95	27	-5.4%	-6.2%	0.03	0.28	4.1%	2.8%	0.167	0.091	0.06%
Osoul Investment	0.095	0.000	0.00%	0.85	NM	11.15	12	-2.9%	-2.9%	0.00	0.00	-2.0%	-1.8%	0.118	0.062	0.03%
UniCap Investment and Finance	0.057	0.000	0.35%	0.65	67.06	0.00	13	-6.4%	-6.4%	0.01	0.17	NM	NM	0.079	0.050	0.03%
Amar Finance and Leasing	0.059	-0.001	-1.67%	0.56	5.02	0.00	12	-5.9%	-5.9%	0.01	0.20	11.8%	11.0%	0.080	0.058	0.03%
Gulf North Africa Holding	0.166	-0.001	-0.60%	1.72	59.40	0.00	20	-1.8%	-1.8%	0.17	1.01	3.0%	2.4%	0.141	0.057	0.05%
International Financial Advisors	0.097	0.001	0.52%	0.62	8.03	0.00	24	-2.3%	-2.2%	0.07	0.75	8.2%	3.4%	0.119	0.082	0.06%
Credit Rating and Collection	0.020	0.001	4.74%	0.70	NM	0.00	3	-8.7%	-8.7%	0.00	0.01	-0.5%	-0.4%	0.035	0.014	0.01%
Ekttitab Holding	0.010	0.000	0.00%	0.32	NM	0.00	3	-5.8%	-5.8%	0.01	0.59	-17.2%	-13.2%	0.021	0.009	0.01%
Kuwait Emirates Holding Co	0.037	0.000	0.00%	0.35	5.90	0.00	7	-1.8%	-1.8%	0.00	0.00	8.6%	6.2%	0.057	0.026	0.02%
Warba Capital Holding	0.085	0.000	0.00%	0.95	NM	0.00	9	5.1%	5.1%	0.00	0.01	-0.4%	-0.4%	0.108	0.070	0.02%
National Consumer Holding	0.114	0.000	0.00%	1.24	NM	0.00	34	2.7%	2.7%	0.04	0.37	-2.3%	-2.3%	0.158	0.097	0.08%
Al Deera Holding	0.152	0.011	7.80%	1.10	10.01	0.00	14	-5.0%	-5.0%	0.00	0.00	9.0%	4.8%	0.192	0.137	0.03%
AL Safat Investment	0.109	0.002	1.87%	1.42	NM	0.00	31	1.9%	1.9%	0.01	0.07	-2.8%	-2.1%	0.270	0.091	0.07%
Gulf Franchising Holding	0.087	0.000	0.00%	1.10	3.27	0.00	3	-3.2%	-3.2%	0.00	0.00	40.5%	13.1%	0.148	0.063	0.01%
<b>Total Financial Services - 44 Companies</b>							<b>3,864</b>			<b>3.03</b>	<b>27.18</b>					<b>8.94%</b>

# DAILY MARKET COVERAGE REPORT

## NIC MENA SECURITIES - RESEARCH AND STUDIES DEP

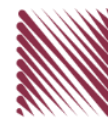


Health Care	Price			Valuation Multiples			MKT Cap	Price Performance		Trading Indicators		ROE	ROA	52 Week (KD)		MKT Cap
	Company	Close (KD)	Day Δ	Day % Δ	PBV(X)	PE(X)		DY%	Mn KD	MTD(%)	YTD (%)			Value (Mn KD)	(Mn Shrs)	
Al-Maidan Clinic for Oral Health Services	0.650	0.000	0.00%	2.47	15.12	0.00	146	-5.8%	-5.8%	0.00	0.00	17.7%	11.4%	1.378	0.556	0.34%
Advanced Technology	0.440	0.000	0.00%	0.98	11.92	3.41	66	0.0%	0.0%	0.00	0.00	8.4%	1.7%	0.595	0.400	0.15%
Yiaco Medical	4.853	0.000	0.00%	111.34	NM	0.00	8	0.0%	0.0%	0.00	0.00	-178.5%	-3.6%	5.155	4.303	0.02%
<b>Total Health Care - 3 Companies</b>							<b>220</b>			<b>0.00</b>	<b>0.00</b>					<b>0.51%</b>

Industrials	Price			Valuation Multiples			MKT Cap	Price Performance		Trading Indicators		ROE	ROA	52 Week (KD)		MKT Cap
	Company	Close (KD)	Day Δ	Day % Δ	PBV(X)	PE(X)		DY%	Mn KD	MTD(%)	YTD (%)			Value (Mn KD)	(Mn Shrs)	
Agility Public Warehousing	0.591	0.007	1.20%	1.09	38.96	2.85	1,508	-17.6%	-17.9%	3.75	6.36	2.3%	1.9%	1.062	0.563	3.49%
Human Soft Holding	3.391	-0.049	-1.42%	3.41	7.15	11.63	413	-3.4%	-3.7%	1.18	0.35	49.6%	34.9%	3.704	3.006	0.95%
Alafco Aviation Lease and Finance	0.214	-0.001	-0.47%	0.91	NM	0.00	204	5.9%	5.4%	0.11	0.49	-23.6%	-4.7%	0.234	0.162	0.47%
Kuwait Cement	0.211	-0.006	-2.76%	0.78	149.65	2.30	150	-5.4%	-5.4%	0.01	0.04	0.5%	0.3%	0.295	0.194	0.35%
Gulf Cable and Electrical Industries Group	1.235	-0.001	-0.08%	1.19	11.93	4.85	258	1.1%	1.6%	0.06	0.05	10.2%	8.4%	1.850	0.959	0.60%
Integrated Holding	0.362	-0.004	-1.09%	1.47	23.51	2.73	92	-1.9%	-2.2%	0.29	0.80	6.4%	4.1%	0.478	0.321	0.21%
Kuwait Portland Cement	0.847	0.009	1.07%	1.16	17.49	8.35	85	3.9%	3.7%	0.02	0.02	6.6%	4.8%	1.240	0.751	0.20%
Educational Holding Group	2.500	0.000	0.00%	3.37	8.60	0.00	52	-2.0%	-2.0%	0.00	0.00	37.3%	17.5%	3.300	2.300	0.12%
United Projects for Aviation Services	0.199	0.003	1.53%	0.72	42.98	0.00	75	-2.5%	-2.5%	0.00	0.00	1.7%	1.0%	0.290	0.182	0.17%
Heavy Engineering Industries and Shipbuilding	0.608	-0.006	-0.98%	1.60	20.14	3.26	110	-0.8%	-0.8%	0.08	0.13	8.1%	3.2%	0.960	0.540	0.25%
National Industries	0.185	0.005	2.78%	0.76	11.66	5.56	65	-4.6%	-4.6%	0.00	0.00	6.5%	4.7%	0.260	0.172	0.15%
ACICO Industries	0.082	-0.001	-0.61%	0.42	NM	0.00	27	-3.4%	-3.0%	0.00	0.04	-15.4%	-3.0%	0.208	0.076	0.06%
Kuwait Company for Process Plant Construction a	0.307	-0.008	-2.54%	1.19	17.24	7.86	36	3.4%	3.4%	0.00	0.01	6.9%	4.1%	0.513	0.279	0.08%
Ras Al Khaimah for White Cement and Constructi	0.136	0.000	0.00%	1.09	29.96	6.10	68	2.3%	2.3%	0.00	0.00	3.6%	3.0%	0.175	0.113	0.16%
Combined Group Contracting	0.467	0.001	0.21%	1.65	8.91	5.36	80	2.9%	2.9%	0.09	0.19	19.6%	4.8%	0.500	0.360	0.18%
Kuwait and Gulf Link Transport	0.061	0.001	1.50%	0.36	2.09	0.00	17	2.2%	3.7%	0.01	0.16	18.8%	4.3%	0.089	0.054	0.04%
Shuaiba Industrial	0.155	0.000	0.00%	0.83	11.88	7.74	15	-3.7%	-3.7%	0.00	0.00	7.0%	5.7%	0.310	0.134	0.04%
National Cleaning	0.033	0.001	3.42%	0.27	NM	0.00	8	0.9%	0.9%	0.00	0.00	-12.6%	-3.7%	0.063	0.030	0.02%
Mubarrad Holding	0.079	0.000	0.00%	0.60	8.29	6.37	13	-3.2%	-2.5%	0.01	0.11	7.3%	6.5%	0.120	0.071	0.03%
Specialities Group Holding	0.117	0.000	0.00%	0.61	6.99	5.81	19	6.4%	7.3%	0.02	0.16	8.8%	6.0%	0.152	0.076	0.04%
Salbookh Trading	0.015	0.002	11.76%	0.50	NM	0.00	2	-1.3%	-1.3%	0.00	0.00	-52.7%	-28.8%	0.044	0.013	0.00%
Metal and Recycling	0.046	0.000	0.22%	0.59	NM	0.00	4	-7.8%	-7.8%	0.00	0.02	-5.7%	0.0%	0.104	0.043	0.01%
Equipment Holding	0.047	0.000	0.00%	0.77	NM	0.00	4	2.0%	2.0%	0.00	0.00	-8.7%	-2.4%	0.067	0.030	0.01%
Jassim Transport & Stevedoring	0.335	-0.005	-1.47%	1.11	13.40	4.71	50	2.1%	2.1%	0.01	0.12	8.6%	6.7%	0.406	0.300	0.12%
<b>Total Industrials - 23 Companies</b>							<b>3,354</b>			<b>5.63</b>	<b>9.04</b>					<b>7.76%</b>

# DAILY MARKET COVERAGE REPORT

## NIC MENA SECURITIES - RESEARCH AND STUDIES DEP



Insurance	Price			Valuation Multiples			MKT Cap	Price Performance		Trading Indicators		ROE	ROA	52 Week (KD)		MKT Cap
	Company	Close (KD)	Day Δ	Day % Δ	PBV(X)	PE(X)		DY%	Mn KD	MTD(%)	YTD (%)			Value (Mn KD)	(Mn Shrs)	
Gulf Insurance Group	0.999	0.000	0.00%	1.03	9.93	10.61	283	-1.6%	-1.6%	0.00	0.00	11.7%	2.5%	1.070	0.943	0.66%
Al Ahleia Insurance	0.515	0.005	0.98%	0.84	6.85	6.86	112	3.4%	3.4%	0.01	0.01	12.5%	4.5%	0.612	0.453	0.26%
Kuwait Insurance	0.536	-0.004	-0.74%	0.81	7.98	6.11	99	2.3%	2.3%	0.00	0.00	10.3%	6.2%	0.627	0.380	0.23%
Kuwait Reinsurance	0.290	0.000	0.00%	1.03	9.50	1.58	69	0.7%	0.7%	0.00	0.00	11.3%	3.6%	0.373	0.217	0.16%
Bahrain Kuwait Insurance	0.191	0.000	0.00%	1.20	10.84	8.44	28	0.0%	0.0%	0.00	0.00	10.9%	2.2%	0.191	0.191	0.07%
Warba Insurance and Reinsurance	0.119	0.000	0.00%	0.54	12.27	8.40	20	-2.5%	-2.5%	0.00	0.00	4.3%	1.5%	0.165	0.107	0.05%
First Takaful Insurance	0.046	0.000	0.00%	0.60	48.92	0.00	5	0.0%	0.0%	0.00	0.00	1.2%	0.8%	0.057	0.034	0.01%
Wethaq Takaful Insurance	0.023	-0.001	-5.00%	0.61	13.33	0.00	3	-6.9%	-6.9%	0.02	0.72	2.3%	2.3%	0.054	0.023	0.01%
<b>Total Insurance - 8 Companies</b>							<b>619</b>			<b>0.02</b>	<b>0.73</b>					<b>1.43%</b>

Energy	Price			Valuation Multipels			MKT Cap	Price Performance		Trading Indicators		ROE	ROA	52 Week (KD)		MKT Cap
	Company	Close (KD)	Day Δ	Day % Δ	PBV(X)	PE(X)		DY%	Mn KD	MTD(%)	YTD (%)			Value (Mn KD)	(Mn Shrs)	
National Petroleum Services	0.828	0.000	0.00%	1.97	11.56	4.23	80	4.9%	4.9%	0.00	0.00	17.8%	14.3%	1.040	0.625	0.19%
Independent Petroleum Group	0.505	0.005	1.00%	0.91	12.07	6.00	91	-1.0%	-1.0%	0.00	0.00	7.6%	1.8%	0.600	0.368	0.21%
Burgan for Well Drilling Trading and Maintenance	0.121	0.004	3.42%	0.44	9.79	0.00	32	4.3%	5.2%	0.02	0.17	4.5%	1.5%	0.161	0.094	0.07%
Energy House Holding	0.100	-0.010	-9.09%	0.22	NM	0.00	5	453.4%	442.5%	0.06	0.62	-0.9%	-2.2%	0.354	0.016	0.01%
Gulf Petroleum Investment	0.015	0.000	0.00%	0.21	NM	0.00	7	1.4%	1.4%	0.00	0.00	-4.3%	-2.8%	0.024	0.013	0.02%
Senergy Holding	0.040	0.000	0.00%	0.81	NM	0.00	8	-10.9%	-10.9%	0.00	0.00	-1.2%	-0.6%	0.053	0.035	0.02%
<b>Total Energy - 6 Companies</b>							<b>222</b>			<b>0.08</b>	<b>0.79</b>					<b>0.51%</b>



# DAILY MARKET COVERAGE REPORT

## NIC MENA SECURITIES - RESEARCH AND STUDIES DEP



Real Estate	Price		Valuation Multiples				MKT Cap	Performance		Trading Indicators		ROE	ROA	2 Week (KD)		MKT Cap
Company	Close (KD)	Day Δ	Day % Δ	PBV(X)	PE(X)	DY%	Mn KD	MTD(%)	YTD (%)	Value (Mn KD)	(Mn Shrs)	(%)	(%)	High	Low	%
Mabane Co.	0.855	0.008	0.94%	1.85	17.38	1.56	1,062	0.4%	0.8%	0.45	0.53	11.1%	5.5%	0.910	0.720	2.46%
Salhia Real Estate	0.543	0.004	0.74%	1.74	17.87	2.65	280	5.3%	5.8%	0.47	0.87	9.9%	4.0%	0.545	0.428	0.65%
Commercial Real Estate	0.098	-0.001	-1.11%	0.59	19.96	5.03	173	-1.6%	-0.5%	0.47	4.80	3.0%	1.7%	0.132	0.094	0.40%
National Real Estate	0.101	0.000	-0.20%	0.60	NM	0.00	187	-19.2%	-19.4%	0.98	9.75	-3.5%	-2.4%	0.212	0.099	0.43%
Tamdeen Real Estate	0.361	0.000	0.00%	0.66	8.61	2.77	145	-2.4%	-2.4%	0.00	0.00	8.2%	3.6%	0.390	0.296	0.34%
Kuwait Real Estate	0.108	-0.001	-0.92%	0.79	15.79	2.67	100	0.0%	0.0%	0.19	1.78	4.9%	1.9%	0.180	0.097	0.23%
United Real Estate	0.061	-0.001	-2.10%	0.38	87.97	0.00	80	-3.8%	-3.8%	0.02	0.37	0.4%	-0.1%	0.121	0.060	0.18%
First Dubai for Real Estate Development	0.046	-0.001	-1.51%	0.43	21.20	0.00	34	-5.1%	-6.1%	0.01	0.26	2.1%	1.7%	0.108	0.044	0.08%
Al Mazaya Holding	0.045	0.000	0.00%	0.45	34.06	0.00	29	-5.6%	-5.6%	0.01	0.12	1.3%	0.7%	0.078	0.043	0.07%
Ajial Real Estate Entertainment	0.288	0.004	1.41%	0.42	18.96	1.76	56	-0.3%	-0.3%	0.06	0.20	2.2%	1.8%	0.344	0.268	0.13%
Injazzat Real Estate Development	0.079	-0.002	-1.88%	0.46	6.27	6.25	27	-0.5%	-1.8%	0.07	0.87	7.5%	3.9%	0.100	0.070	0.06%
Munshaat Real Estate Projects	0.053	0.000	0.00%	1.60	4.41	0.00	17	-12.8%	-12.8%	0.00	0.00	42.9%	4.5%	0.073	0.048	0.04%
Aayan Real Estate	0.078	-0.001	-0.89%	0.55	25.44	0.00	32	2.2%	1.0%	0.04	0.55	2.2%	2.3%	0.091	0.056	0.08%
Al Argan International Real Estate	0.091	0.002	2.71%	0.30	11.33	0.00	23	-2.2%	-2.2%	0.00	0.01	2.6%	0.9%	0.144	0.073	0.05%
Al-Enmaa Real Estate	0.057	-0.001	-1.57%	0.62	106.60	0.00	25	-4.4%	-5.0%	0.02	0.34	0.6%	NM	0.081	0.050	0.06%
Arkan Al Kuwait Real Estate	0.116	0.000	0.00%	0.82	13.14	5.17	29	0.0%	0.0%	0.00	0.00	6.3%	2.0%	0.144	0.113	0.07%
Kuwait Business Town Real Estate	0.054	0.002	2.88%	0.66	11.03	0.00	31	-4.6%	-4.6%	0.09	1.76	5.0%	3.4%	0.092	0.046	0.07%
Dalqan Real Estate	0.215	0.001	0.47%	1.91	186.96	0.00	13	-6.5%	-6.5%	0.04	0.19	1.0%	1.0%	0.249	0.195	0.03%
Sokouk Holding	0.023	0.001	4.07%	0.53	14.29	0.00	13	-2.2%	0.0%	0.02	0.95	3.8%	1.7%	0.035	0.020	0.03%
Tijara and Realestate Investment	0.054	0.000	0.19%	0.48	8.16	5.60	20	0.4%	0.4%	0.00	0.00	6.0%	3.3%	0.089	0.044	0.05%
Al-Arabiya Real Estate	0.027	0.000	-0.37%	0.33	NM	0.00	14	8.5%	5.0%	0.00	0.05	-22.5%	-7.2%	0.043	0.024	0.03%
Aqar Real Estate Investments	0.062	0.000	-0.32%	0.51	18.09	5.40	14	-3.0%	-3.0%	0.00	0.01	2.9%	2.4%	0.084	0.052	0.03%
Mashaer Holding	0.054	-0.001	-0.92%	0.63	NM	0.00	10	-1.3%	-1.3%	0.00	0.02	-3.6%	-1.2%	0.073	0.049	0.02%
Dar Al Thuraya Real Estate	0.204	0.000	0.00%	1.75	27.42	0.00	30	-4.7%	-4.7%	0.00	0.00	6.6%	5.6%	0.225	0.100	0.07%
Osos Holding Group	0.109	0.004	3.81%	0.96	9.49	9.52	11	-0.9%	-0.9%	0.00	0.00	10.2%	6.5%	0.147	0.094	0.03%
Al Massaleh Real Estate	0.029	0.000	1.42%	0.47	NM	0.00	7	-10.6%	-5.3%	0.00	0.00	-12.3%	-2.2%	0.050	0.027	0.02%
Kuwait Remal Real Estate	0.008	0.000	0.00%	1.09	NM	0.00	2	0.0%	0.0%	0.00	0.00	-114.8%	-12.4%	0.019	0.007	0.01%
Kuwait Real Estate Holding	0.033	0.000	0.00%	0.61	11.92	0.00	6	-0.3%	-0.3%	0.00	0.00	5.1%	1.7%	0.057	0.031	0.01%
Taameer Real Estate Investment	0.023	0.000	0.00%	0.37	NM	0.00	5	8.6%	8.6%	0.00	0.00	-13.8%	-12.7%	0.041	0.018	0.01%
Sanam Real Estate	0.059	-0.003	-4.88%	0.77	65.73	0.00	7	-2.2%	-7.0%	0.00	0.00	1.2%	1.0%	0.100	0.053	0.02%
Mena Real Estate	0.028	0.000	0.00%	0.32	NM	0.00	4	0.0%	0.0%	0.00	0.00	-6.8%	-5.4%	0.051	0.028	0.01%
Al Masaken International Real Estate Developmen	0.025	0.001	2.83%	0.43	NM	0.00	2	-5.6%	-5.6%	0.00	0.00	-0.5%	-0.2%	0.048	0.023	0.01%
Real Estate Trade Centers	0.057	-0.002	-2.56%	0.32	15.32	0.00	8	-5.0%	-5.0%	0.00	0.06	2.1%	1.7%	0.078	0.043	0.02%
<b>Total Real Estate - 33 Companies</b>							<b>2,495</b>			<b>2.96</b>	<b>23.49</b>					<b>5.77%</b>

# DAILY MARKET COVERAGE REPORT

NIC MENA SECURITIES - RESEARCH AND STUDIES DEP



Technology	Price			Valuation Multiples			MKT Cap	Price Performance		Trading Indicators		ROE	ROA	52 Week (KD)		MKT Cap
	Close (KD)	Day Δ	Day % Δ	PBV(X)	PE(X)	DY%	Mn KD	MTD(%)	YTD (%)	Value (Mn KD)	(Mn Shrs)	(%)	(%)	High	Low	%
Automated Systems	0.096	0.000	0.00%	0.85	NM	0.00	10	-0.1%	-0.1%	0.00	0.00	-3.2%	-2.8%	0.110	0.074	0.02%
<b>Total Technology - 1 Companies</b>				<b>0.85</b>	<b>NM</b>	<b>0.0%</b>	<b>10</b>			<b>0.00</b>	<b>0.00</b>	<b>-3.21%</b>	<b>-2.82%</b>			<b>0.02%</b>

Telecom	Price			Valuation Multiples			MKT Cap	Price Performance		Trading Indicators		ROE	ROA	52 Week (KD)		MKT Cap
	Close (KD)	Day Δ	Day % Δ	PBV(X)	PE(X)	DY%	Mn KD	MTD(%)	YTD (%)	Value (Mn KD)	(Mn Shrs)	(%)	(%)	High	Low	%
Mobile Telecommunications	0.554	-0.006	-1.07%	1.99	12.74	5.89	2,397	-1.1%	-1.6%	4.07	7.35	15.7%	4.3%	0.698	0.541	5.54%
Kuwait Telecommunications	0.700	-0.023	-3.18%	3.02	15.41	4.15	699	20.0%	19.7%	2.66	3.75	20.3%	11.1%	1.189	0.430	1.62%
National Mobile Telecommunications	1.107	-0.038	-3.32%	1.04	14.37	3.06	555	-4.5%	-4.5%	0.07	0.06	7.2%	4.2%	1.280	0.633	1.28%
AAN Digital Services	0.016	0.000	0.00%	2.57	NM	0.00	14	0.0%	0.0%	0.00	0.00	-100.9%	NM	0.017	0.016	0.03%
Hayat Communications	0.057	0.000	0.00%	0.45	NM	0.00	5	-5.0%	-5.0%	0.00	0.00	-1.2%	-0.5%	0.110	0.049	0.01%
<b>Telecom - 5 Companies</b>							<b>3,670</b>			<b>6.79</b>	<b>11.16</b>					<b>8.49%</b>

Utilities	Price			Valuation Multiples			MKT Cap	Price Performance		Trading Indicators		ROE	ROA	52 Week (KD)		MKT Cap
	Close (KD)	Day Δ	Day % Δ	PBV(X)	PE(X)	DY%	Mn KD	MTD(%)	YTD (%)	Value (Mn KD)	(Mn Shrs)	(%)	(%)	High	Low	%
Shamal Al-Zour Al-Oula Power & Water	0.182	0.000	0.00%	1.69	14.97	9.89	200	-3.7%	-3.2%	0.07	0.40	14.8%	2.7%	0.228	0.176	0.46%
<b>Total Utilities - 1 Companies</b>							<b>200</b>			<b>0.07</b>	<b>0.40</b>					<b>0.46%</b>

<b>Total Market 153 Companies</b>				<b>1.90</b>	<b>25.13</b>	<b>4.13</b>	<b>43,242</b>			<b>44.45</b>	<b>113.11</b>					<b>100%</b>
-----------------------------------	--	--	--	-------------	--------------	-------------	---------------	--	--	--------------	---------------	--	--	--	--	-------------

## End of Report

The information contained in this document is proprietary to NIC and is for use only by the persons to whom it is issued. This document is confidential and may not be distributed either in part or in whole without the express agreement of NIC. It is intended solely for the use of the individual or entity to whom it is addressed and others authorized to receive it.

Note : ROE and ROA is calculated based on LFY net profit & shareholders' equity and LFY Operating Profits & Total Assets

Sources : National Investments Company Research and Studies Departments, Boursa, Refinitiv.



شركة الاستثمار الوطنية  
NATIONAL INVESTMENTS COMPANY

Sharq, Al Mutanabi Street, Khaleejia Tower | P.O. Box 25667, Safat 13117, Kuwait

T.: +965 2226 6666 | Fax: +965 2226 6793 | [www.nic.com.kw](http://www.nic.com.kw)